

Open
to the Public



42

International Carnival Glass
Association Convention

The Lee Markley
Collection



22

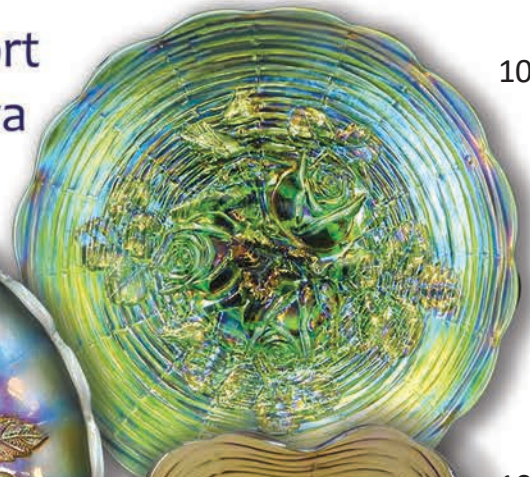
Carnival Glass 2019 Auction

Saturday, July 13 9:30 a.m.

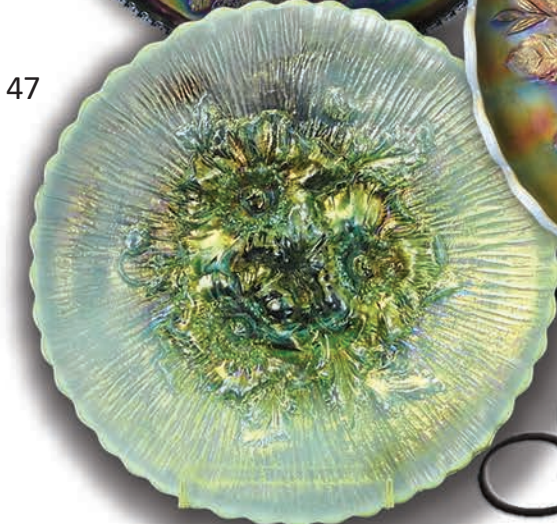


17

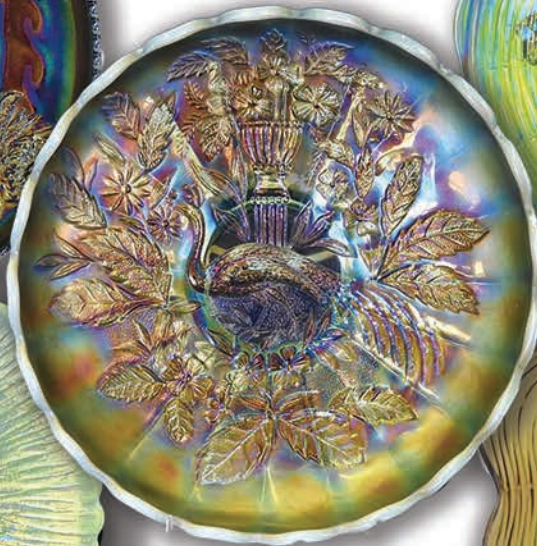
Holiday Inn Airport
Des Moines, Iowa



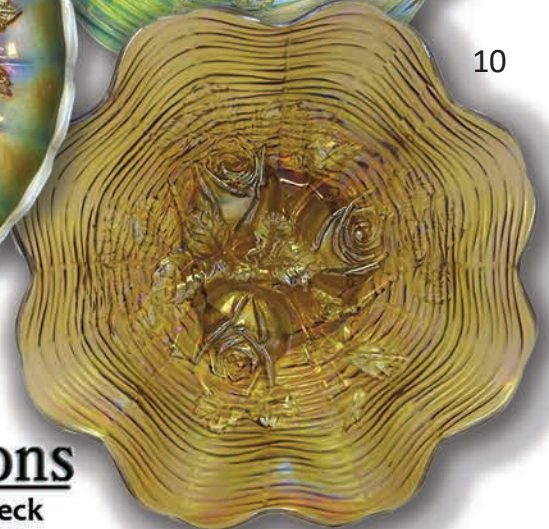
10



47



38



10

Seeck Auctions
Jim & Jan Seeck
641-424-1116

SATURDAY, JULY 13, 2019 — 9:30 A.M.

Holiday Inn Airport Hotel

6111 Fleur Drive Des Moines, Iowa 50321

★ FRIDAY PREVIEW

★ ABSENTEE and LIVE BIDDING is available on-line through Auction Flex at: www.seeckauction.com

NO BUYER'S PREMIUM -- EMAIL: jimjan@seeckauction.com

The Lee Markley Collection

The place to be the middle of July is Des Moines, Iowa enjoying friends, family and learning about Carnival Glass. Our auction this year features the late Lee Markley Collection. Lee was the long time secretary of ICGA and gave several talks and seminars on his collection. His fantastic collection

consists of rarity, quality, and variety. Lee loved collecting Carnival Glass and was always on the hunt in his area to buy more glass. Lee also put together an amazing collection of tumblers and we will be having an Online Only tumbler auction on Thursday, evening, July 11.

LODGING

Visit the ICGA Website: <http://www.internationalcarnivalglass.com>

If you have questions about the convention, contact President Brian Pitman at: 785-274-9105 or email: bpitman@gmail.com

If planning to stay at the hotel, reservations can be made by calling (515)287-2400. Group Code: ICGA

Terms: Cash or Check, VISA, MasterCard and Discover accepted w/proper ID. **4% Clerking Fee** on all purchases made using credit cards. Announcements made day of sale take precedence over any printed information.

ABSENTEE BIDDING OPTIONS

- 1) Call us by phone at: (641) 424-1116
- 2) Prebid: Enter your bids from our website into our online catalog through the Auction Flex system.
 - An exciting advantage of entering your bids online yourself, is the option to be notified by email if you are outbid on an item. You will know when you are outbid on an item and you can increase your bid on that item or bid on something else.
- 3) Live Phone Bidding: Is available on pieces with an estimated sale price of \$500 or more. If you would like to participate in live phone bidding, contact us by **the Thursday before the auction.**
- 4) Real-time Bidding: Bid live during the auction through Auction Flex live webcast bidding.

There is a \$7 handling charge for each successful bid. Shipping and insurance charges are additional.

Bidders will be notified by phone/email if their bid(s) are successful. This will be done 1 - 3 days after the auction.

BID INCREMENTS:

\$1 - \$100/\$5	\$100 - \$200/\$10	\$200 - \$700/\$25	\$700 - \$1,500/\$50
\$1,500 - \$3,000/\$100	\$3,000 - \$5,000/\$250	\$5000+	Auctioneer's Discretion

- ___ 1. Circle Scroll butter dish - marigold - very nice
- ___ 2. Basketweave Open Edge lg size square basket - ice green - nice
- ___ 3. Basketweave Open Edge small size square shaped basket - white - nice
- ___ 4. US Glass #310 console set - Mandarin Yellow - Stretch Glass, rare set
- ___ 5. Wild Rose Open Edge turned in rose bowl - marigold
- ___ 6. Blackberry Spray ruffled hat - aqua opal - super example & very scarce
- ___ 7. Blackberry Spray ruffled hat - red - nice
- ___ 8. Grape & Cable candlestick - green
- ___ 9. Circle Scroll JIP hat shape - purple
- ___ **10. Rose Show 9" plate - lime green opal - very pretty plate w/super irid., extremely rare**
- ___ **11. Rose Show 9" plate - marigold - lots of pretty pink & yellow irid., super**
- ___ 12. Hobstar & Waffle Block lg basket - smoke - rare color
- ___ 13. Dandelion tankard water pitcher - lavender - scarce color
- ___ 14. Dandelion 7 pc. tankard water set - purple - nice
- ___ 15. Persian Garden 6" plate - peach opal - nice example
- ___ 16. Persian Garden 7" plate - white - pretty irid.
- ___ **17. Australian Kookaburra 11" float bowl - dark-Broken Chain back pattern, one of the best pieces of Australian we have ever sold**
- ___ 18. Fashion rose bowl - green - scarce color
- ___ 19. Dugan Vintage dome ftd 9" plate - amethyst - rare plate
- ___ 20. Dugan Vintage dome ftd 9" plate - marigold - not only very rare but nice
- ___ 21. Flute breakfast set - purple - nice
- ___ **22. N's Bushel basket - vaseline - very rare color w/pretty irid., great example**
- ___ 23. N's Bushel basket - sapphire - large chip on foot
- ___ 24. N's Bushel basket - lime green - scarce color
- ___ 25. N's Bushel basket - ice green
- ___ 26. N's Bushel basket - white
- ___ 27. N's Bushel basket - aqua - scarce color
- ___ 28. N's Bushel basket - aqua opal - nice
- ___ 29. N's Bushel basket - aqua opal - heavy butterscotch irid.
- ___ 30. N's Bushel basket - green
- ___ 31. N's Bushel basket - lavender - scarce color
- ___ 32. N's Bushel basket - smoke - scarce color
- ___ 33. N's Bushel basket - amethyst
- ___ 34. N's Bushel basket - purple - very pretty
- ___ 35. N's Bushel basket - odd blue - looks like blue w/a little lavender in it
- ___ 36. N's Bushel basket - blue - nice
- ___ 37. N's Bushel basket - marigold - pretty
- ___ **38. N's Peacock at Urn master IC bowl - aqua opal - very rare & highly sought after piece, pretty, new find that was found in a home in Georgia**
- ___ 39. N's Peacock at Urn master IC bowl - ice blue - nice
- ___ 40. N's Peacock at Urn 7 pc. IC set - purple - hard to find sets
- ___ 41. Daisy Cut bell - marigold
- ___ **42. M'burg Dolphin compote - amethyst - very rare & highly desirable, seldom sold & nice!**
- ___ 43. Cruet - marigold - need help with this pattern?
- ___ **44. Enameled Iris w/diagonal band 7 pc. tankard water set - green - super rare set & beautiful**
- ___ 45. Enameled Iris w/diagonal band 7 pc. tankard water set - marigold - also beautiful set
- ___ 46. Cherry Circles bonbon - blue - pretty
- ___ **47. Poppy Show 9" plate - aqua opal - extremely rare plate, from the Whitley Collection**
- ___ 48. Poppy Show 9" plate - blue - super nice, a beauty
- ___ 49. Poppy Show 9" plate - marigold - dark & pretty, tiny pinpoint on back edge
- ___ 50. Grape & Cable dresser tray - purple
- ___ 51. Grape & Cable pin tray - purple
- ___ 52. Stag & Holly giant rose bowl - marigold - dark, nice
- ___ **53. Rustic 19" funeral vase w/plunger base - green - very rare & beautiful**
- ___ **54. Rustic 19 1/2" funeral vase - blue - always in demand**
- ___ **55. Rustic 17 1/2" funeral vase - marigold - nice color top to bottom**
- ___ 56. Vintage 7" plate - green
- ___ 57. Vintage 7" plate - blue
- ___ 58. Vintage 7" plate - marigold
- ___ **59. Heavy Iris tankard water pitcher - purple - very scarce & pretty**
- ___ 60. Heavy Iris 7 pc. tankard water set - marigold
- ___ **61. Rose Show ruffled bowl - horehound - rare color, very nice**
- ___ **62. Rose Show ruffled bowl - green - very pretty, hard color to find**
- ___ 63. Rose Show ruffled bowl - aqua opal - nice opal, pretty example
- ___ 64. Rose Show ruffled bowl - ice blue - scarce color, manufacture tiny splits between ruffles
- ___ 65. Rose Show ruffled bowl - white - one petal is rough on a rose
- ___ 66. Rose Show ruffled bowl - purple - small chip on base by seam
- ___ 67. Double Loop chalice or open sugar - aqua opal - scarce
- ___ **68. M'burg Rose Columns vase - amethyst - a M'burg favorite, rare & desirable**
- ___ 69. Drapery rose bowl - marigold - nice
- ___ 70. Drapery rose bowl - aqua opal - butterscotch
- ___ 71. Drapery rose bowl - blue
- ___ 72. Drapery rose bowl - purple - has smooth top
- ___ **73. Farmyard 6 ruffled bowl - purple - a collector's favorite**
- ___ 74. Garden Path Variant 7" plate - white - scarce
- ___ 75. Paneled Dandelion 7 pc. water set - green - nice
- ___ 76. Paneled Dandelion 7 pc. water set - blue - nice set
- ___ 77. Diamond Rib 9 1/2" vase - white - scarce color
- ___ **78. Heavy Web 11" deep bowl - peach opal - very rare & desirable, not many sold, nice!**
- ___ 79. Stippled Rays 6" deep round bowl - red - super nice
- ___ 80. Waterlily & Cattails 4 pc. table set - marigold - hard set to find
- ___ **81. Australian Emu ruffled master 9" bowl w/Fern & Waffle back - aqua - fantastic piece of aqua glass from Australia w/great irid.**
- ___ **82. Australian Emu ruffled master 9" bowl w/Fern & Waffle back - dark - may be the prettiest Australian piece I have ever sold**
- ___ 83. Thumbprint & Ovals vase - marigold - nice
- ___ 84. Enameled Columbine water pitcher - green - nice
- ___ 85. Enameled Columbine 7 pc. water set - amethyst - nice set
- ___ 86. M'burg Strawberry Wreath 6" crimped edge deep bowl - marigold - radium & super
- ___ **87. Peacocks ruffled bowl w/ribbed back - aqua opal - pastel & super!**

- ___ 88. Peacocks ruffled bowl w/plain back - ice green - small chip on point
- ___ 89. Peacocks ruffled bowl w/ribbed back - white - nice
- ___ 90. Peacocks ruffled bowl w/ribbed back - green - pretty, tiny pinpoint on tip of one point
- ___ 91. Peacocks ruffled bowl w/ribbed back - blue - nice
- ___ 92. Peacocks ruffled bowl w/ribbed back - purple
- ___ 93. Prayer Rug bonbon - marigold on custard - scarce
- ___ **94. M'burg Blackberry Wreath 6" plate - amethyst - very rare plate & highly desirable**
- ___ 95. Enameled Radiance 3 pc. water set - marigold - very scarce
- ___ 96. Enameled Radiance syrup - marigold - another rare piece
- ___ 97. Enameled Radiance cruet - marigold
- ___ 98. Enameled Radiance spooner - marigold
- ___ **99. Chrysanthemum chop plate - purple - super pretty irid., very rare**
- ___ 100. M'burg Hobnail Swirl rose bowl - amethyst
- ___ 101. M'burg Hobnail Swirl rose bowl - marigold
- ___ 102. Raspberry 7 pc. water set - purple
- ___ 103. Raspberry 7 pc. water set - marigold - minor manufacture roughness around base of pitcher
- ___ 104. Dugan Cherries crimped edge 6" plate - purple - nice
- ___ **105. Stippled Peacocks 9" plate w/ribbed back - renninger blue - as nice as these get, rare color, beautiful**
- ___ 106. Stippled Peacocks 9" plate w/ribbed back - blue - scarce
- ___ 107. Stippled Peacocks 9" plate w/ribbed back - marigold - pretty
- ___ 108. Daisy bonbon - blue - pretty & scarce
- ___ **109. Hyacinth Gone with the Wind oil lamp - marigold on moonstone - rare & nice**
- ___ 110. Grape Arbor 7 pc. tankard water set - white - scarce
- ___ 111. Grape Arbor 7 pc. tankard water set - purple - nice
- ___ 112. Peacock at the Fountain ruffled compote - ice blue - scarce, nice
- ___ **113. Birds & Cherries 10" IC shaped bowl - blue - very rare bowl that is seldom sold, from the Fry collection**
- ___ 114. Four Flowers chop plate - peach opal
- ___ 115. Chesterfield 9" candlesticks - red - chip on inside rim of base of one stick
- ___ **116. N's Eight Sided bushel basket - sapphire - very rare color & nice**
- ___ 117. N's Eight Sided bushel basket - ice blue - another rare color, nice example
- ___ 118. N's Eight Sided bushel basket - ice green - scarce
- ___ 119. N's Eight Sided bushel basket - white
- ___ 120. N's Eight Sided bushel basket - green - scarce color
- ___ 121. N's Eight Sided bushel basket - purple
- ___ 122. N's Eight Sided bushel basket - amethyst
- ___ 123. N's Eight Sided bushel basket - blue - nice
- ___ 124. N's Eight Sided bushel basket - marigold - nice
- ___ **125. Starflower water pitcher - white - extremely rare color, not many known, tiny nick on top edge of base by seam, who cares, great piece**
- ___ 126. Dragon & Lotus IC shaped bowl - amber
- ___ 127. Dragon & Lotus IC shaped bowl - amber w/slight opal on tips - can just barely see it on the high tips
- ___ 128. Pinecone 6" saucer shaped plate - amethyst - pretty!
- ___ **129. Zipper Loop lg size finger lamp - marigold - 4 1/4" base, 5 3/4" tall, scarce & super nice**
- ___ **130. Zipper Loop med size finger lamp - smoke - has 4 1/4" base, 5" tall, great**
- ___ **131. Zipper Loop small size finger lamp - marigold - 3 1/2" base, 4 1/2" tall, dark & super, a cutie!**
- ___ 132. M'burg Strawberry Wreath 8" square shaped bowl - amethyst - radium, nice
- ___ 133. Fruit Salad 8 pc. punch set - marigold - scarce
- ___ 134. Dandelion mug - aqua opal - butterscotch & nice
- ___ 135. Dandelion mug - blue - nice
- ___ 136. Cherry & Cable 5 pc. water set - marigold - scarce set & nice
- ___ 137. Caroline handled basket - peach opal
- ___ **138. M'burg Seacoast pin tray - green - very scarce, backside of top edge is slightly polished**
- ___ **139. M'burg Seacoast pin tray - amethyst - very scarce, nice**
- ___ **140. M'burg Seacoast pin tray - marigold - rare color**
- ___ 141. Dugan Stretch Glass Optic Rib 7 pc. water set w/lid - ice green - one tumbler has chip on base
- ___ **142. Australian Emu giant cake plate - marigold - fantastic mold work, great irid., rare, rare, rare**
- ___ 143. Inverted Strawberry spittoon - marigold - very nice
- ___ **144. Imperial Grape water carafe - smoke - rare color, pretty**
- ___ 145. Imperial Grape water carafe - lavender
- ___ 146. Imperial Grape water carafe - purple - super pretty
- ___ **147. Peacocks 9" plate w/ribbed back - ice blue - super pretty, a dandy**
- ___ 148. Peacocks 9" plate w/ribbed back - ice green - pretty
- ___ 149. Peacocks 9" plate w/ribbed back - purple
- ___ 150. Peacocks 9" plate w/ribbed back - marigold - nice
- ___ 151. M'burg Diamonds 7 pc. water set - amethyst - nice set
- ___ 152. M'burg Nesting Swan ruffled bowl - green - satin, nice
- ___ 153. M'burg Nesting Swan ruffled bowl - marigold - radium, nice
- ___ 154. Tree Trunk 12 1/2" midsize vase - amethyst - nice
- ___ 155. Strawberry bonbon - reverse amberina - scarce, nice
- ___ 156. Lattice & Daisy 7 pc. tankard water set - marigold - scarce set
- ___ **157. Stippled Good Luck 9" plate w/ribbed back - blue - scarce color**
- ___ 158. Cupped in 5 1/2" compote - marigold - need help on this pattern
- ___ 159. Embroidered Mums ruffled bowl w/ribbed back - blue - silvery
- ___ 160. Embroidered Mums ruffled bowl w/ribbed back - amethyst - silvery
- ___ 161. Double Star 7 pc. water set - green - one tumbler has bruise on base, scarce set
- ___ 162. Sailboats 6" plate - marigold
- ___ **163. Good Luck ruffled bowl w/ribbed back - sapphire - super pretty & quite scarce**
- ___ 164. Good Luck ruffled bowl w/ribbed back - amethyst - super pretty, many would call lavender
- ___ 165. Good Luck ruffled bowl w/ribbed back - blue - nice
- ___ 166. Good Luck ruffled bowl w/ribbed back - marigold - pretty
- ___ 167. Chesterfield sherbet & under plate - red - Stretch Glass, nice
- ___ **168. M'burg Deep Grape square shaped compote - amethyst - satin, extreme rarity, back of one point has been slightly polished**
- ___ 169. Daisy & Plume fld rose bowl w/Raspberry interior - white - nice

- ___ 170. **Octagon small size water pitcher – purple - fantastic & beautiful, rare**
- ___ 171. M'burg Peacock Tail Variant ruffled compote - green - radium, polishing on edge of base
- ___ 172. N's Fine Rib 7" squatty vase - white - very rare vase, nice
- ___ 173. **Australian Butterfly & Waratah 9" compote w/ Hobnail & Cane back - dark - irid. on this is fantastic, radium & beautiful, Wow!**
- ___ 174. Acorn Burrs butter dish - marigold - very nice
- ___ 175. Tornado lg size vase - purple - on second rib on base there is a manufacture open bubble, hard to find large purple ones
- ___ 176. Tornado small size vase - marigold - nice
- ___ 177. M'burg Peacock 7 pc. berry set - amethyst - radium & nice, scarce to find complete set
- ___ 178. Enameled Cherry & Little Daisies water pitcher & 1 tumbler - marigold - very hard to find in this color, nice pitcher
- ___ 179. Orange Tree w/trunk 9" plate - blue - very pretty
- ___ 180. **Diamond Fountain cruet - marigold - Higbee, scarce novelty**
- ___ 181. **M'burg Wild Rose lamp w/Lady Medallions kerosene lamp - green - very rare lamp, has a replaced font, came from the Wilson auction, 6 1/2" base, extreme rarity, highly sought after**
- ___ 182. Grape & Cable banana boat - marigold - very pretty
- ___ 183. Daisy & Plume w/Raspberry interior candy dish - ice blue - scarce item
- ___ 184. Daisy & Drape flared out vase - blue - scarce color
- ___ 185. Daisy & Drape flared out vase - aqua opal - always in demand
- ___ 186. Daisy & Drape flared out vase - marigold - nice
- ___ 187. Horse Medallion ftd ruffled bowl - amethyst - scarce color
- ___ 188. **Dozen Roses ftd round bowl - green - extremely rare bowl in this color, chip on foot & chips on edge**
- ___ 189. Apple Blossom Twigs low ruffled bowl - purple
- ___ 190. **Peter Rabbit IC shaped bowl - marigold - rare bowl, super nice**
- ___ 191. Pansy low ruffled bowl - smoke - super pretty
- ___ 192. Pansy ruffled bowl - purple - pretty
- ___ 193. Wine & Roses 7 pc. water set – marigold
- ___ 194. Acorn ruffled bowl - red
- ___ 195. Acorn ruffled bowl - amber opal - scarce bowl, nice
- ___ 196. Good Luck 9" plate w/BW back - purple - scarce
- ___ 197. Good Luck 9" plate w/BW back - marigold
- ___ 198. Wishbone & Spades 6" plate - purple
- ___ 199. Zipper Loop 9 1/2" kerosene lamp – marigold - 5 1/2" base, couple of bursts on bottom edge of base
- ___ 200. **Zipper Loop 8" kerosene lamp - smoke - 5 1/2" base, very nice, some people call this the sewing lamp**
- ___ 201. Zipper Loop 8" kerosene lamp - marigold - 4 3/4" base - nice
- ___ 202. **M'burg Many Stars IC shaped bowl - amethyst - radium & super, has 5 point star in center**
- ___ 203. Four Pillars 10" vase - marigold on custard - extremely rare vase, has chips on feet, not often sold
- ___ 204. Soda Gold 7 pc. water set - smoke - nice set
- ___ 205. Hearts & Flowers ruffled compote - ice blue - pretty
- ___ 206. Hearts & Flowers ruffled compote - blue
- ___ 207. Hearts & Flowers ruffled compote - marigold - nice
- ___ 208. **Enameled Shasta Daisy water pitcher - white - hard to find color, nice**
- ___ 209. M'burg Little Stars 7" ruffled bowl - green - satin
- ___ 210. **Corn bottle - smoke - super pretty, has paper label on bottom from "The ARCADE, Plattsburgh, NY"**
- ___ 211. **Autumn Acorn 9" plate - blue - very rare & highly desirable, a dandy**
- ___ 212. Vintage 9" ruffled bowl - lime green w/marigold overlay - very pretty
- ___ 213. **Peacocks PCE bowl w/plain back - white w/painted feathers & flowers - very unusual, tiny open bubble on base**
- ___ 214. Peacocks PCE bowl w/ribbed back - marigold
- ___ 215. Orange Tree mug - red
- ___ 216. M'burg Trout & Fly IC shaped bowl – amethyst - radium, silvery
- ___ 217. **Poinsettia & Lattice ruffled bowl w/ribbed back - white - very rare color for these, not many around, nice**
- ___ 218. **Poinsettia & Lattice ruffled bowl w/ribbed back - ice blue - very pretty irid., very scarce**
- ___ 219. Beaded Acanthus milk pitcher - marigold
- ___ 220. **Milady tankard water pitcher - blue - hard to find tankard, nice**
- ___ 221. Grape & Cable tobacco jar – marigold - minor roughness on inner rim of lid
- ___ 222. M'burg Peacock at Urn master IC shaped bowl - green - satin, nice
- ___ 223. Long Buttress water pitcher - marigold - Fostoria
- ___ 224. Good Luck PCE bowl w/ribbed back – amethyst - many would call this lavender
- ___ 225. Good Luck PCE bowl w/ribbed back - blue
- ___ 226. Good Luck PCE bowl w/BW back - green
- ___ 227. Good Luck PCE bowl w/ribbed back - marigold - I think the sprayer ran out of irid. here, could call it a white one?
- ___ 228. Fisherman's mug - marigold - dark, nice
- ___ 229. Persian Medallion 6" plate - black amethyst - scarce color
- ___ 230. Thistle banana boat - green - pretty, manufacture split in base
- ___ 231. **Waterlily & Cattails whimsey 6" plate - marigold - whimsey piece probably from the toothpick?**
- ___ 232. Orange Tree IC shaped bowl - green - nice
- ___ 233. Captive Rose 3 in 1 edge bowl - green - super
- ___ 234. Stippled Peacocks ruffled bowl w/ribbed back - marigold
- ___ 235. N's Corn vase w/stalk base - coke bottle green - rare color, has nice irid. for these, minor chip on base
- ___ 236. N's Corn vase w/stalk base - green - scarce, nice
- ___ 237. N's Corn vase w/stalk base - purple - highly desirable
- ___ 238. N's Corn vase w/stalk base - ice green
- ___ 239. N's Corn vase w/stalk base - white
- ___ 240. N's Peacock at the Fountain water pitcher - blue
- ___ 241. N's Peacock at the Fountain 7 pc. water set - marigold - nice
- ___ 242. Horse Medallion ftd nut bowl - red - scarce
- ___ 243. Brooklyn Bridge 6 ruffled bowl - marigold
- ___ 244. **Cambridge Near Cut cologne bottle – green - scarce & nice**

245. M'burg Primrose ruffled bowl - marigold - radium, nice
246. **M'burg Vintage IC shaped sauce w/Hobnail back - blue - very rare blue Millersburg, highly desirable**
247. Fenton's Peacock at Urn 9" plate - marigold - nice
248. Nippon PCE bowl w/ribbed back - ice blue
249. Orange Tree loving cup - blue - nice
250. Orange Tree loving cup - marigold - also nice
251. Diamond Lace 7 pc. water set - purple - nice
252. Strawberry 9" plate w/BW back - lavender - scarce color
253. **Jockey Club advertising ruffled bowl - amethyst - very nice example**
254. Windflower 9" plate - blue - has "Souvenir Indiana Fair 1921"
255. M'burg Peacock at Urn 10" ruffled bowl - green - satin, nice
256. Orange Tree Orchard 7 pc. water set - marigold - nice set
257. Blackberry Open Edge 2 sides up basket - red
258. Stippled Three Fruits 9" plate w/ribbed back - purple - very pretty, minor scratches on fruit
259. Stippled Three Fruits 9" plate w/ribbed back - marigold - nice
260. **Buzz Saw lg size cruet - green - rare, nice**
261. Buzz Saw lg size cruet - marigold - scarce, has the small stopper, does fit, have seen this before
262. Buzz Saw small size cruet - green
263. Lotus & Grape card tray shaped bonbon - amber or brick red - scarce either way
264. **Butterfly bonbon w/threaded back - blue - electric highlights, scarce, nice**
265. **Ripple 17" funeral vase - light lime green - has slight color to its base, does glow slightly**
266. Peacock at the Fountain butter dish - purple
267. Peacock at the Fountain butter dish - marigold
268. Imperial Grape 8 pc. wine set - purple - nice set
269. M'burg Leaf & Little Flowers sherbet shaped compote - green - satin
270. M'burg Leaf & Little Flowers sherbet shaped compote - amethyst - radium
271. **Stippled Three Fruits ruffled bowl w/ribbed back - aqua opal - scarce, nice**
272. **Stippled Three Fruits ruffled bowl w/ribbed back - green - super pretty for these**
273. Scroll Embossed 8" ruffled bowl w/File back - purple - pretty
274. M'burg Peacock ruffled sauce - amethyst - radium
275. Vintage dome ftd IC shaped 7" bowl - marigold - not sure who made this
276. Orange Tree 9" plate - marigold - nice
277. Wreathed Cherry water pitcher & 1 tumbler - purple - scarce
278. Basketweave Open Edge JIP basket - red
279. Finger bowl in silver plated frame
280. 1983 ICGA Frolicking Bears whimsey cruet - lime green opal w/marigold overlay
281. 1983 ICGA Frolicking Bears whimsey cruet - vaseline opal
282. 1982 Frolicking Bears whimsey cruet - red
283. 1993 ICGA Frolicking Bears tumbler w/decorated bears & flowers - lavender - hand painted by Carol Griffiths
284. 2017 ICGA rose bowl shaped Christmas compote - green
285. 1988 ICGA Basketweave Open Edge decorated handgrip plate - red - decorated by Louis Piper
286. **Stippled Peacock at Urn 7 pc. IC set - blue - rare set & nice**
287. Holly 9" plate - green
288. Holly 9" plate - blue - pretty
289. Holly 9" plate - white - nice irid.
290. Butterfly & Fern 7 pc water set - green - scarce
291. Wild Rose syrup - marigold - top of lid loose
292. **NUART Homestead chop plate - purple - fantastic irid., a beauty w/great mold work**
293. Stretch Glass Ring Optic 16" vase - tangerine - 3 3/8" base, scarce color & nice
294. Smooth Panels 14 1/2" vase - smoke - 4 3/8" base
295. **Australian Waterlily & Dragonfly 11" float bowl - marigold - rare & hard to find**
296. Fenton's Peacock at Urn IC shaped bowl - lime green w/marigold overlay - nice
297. Grape & Cable Variant 9" plate w/BW back - smokey olive green - unusual color, manufacture smooth points on part of the edge
298. **Covered Frog - ice green - always in demand, nice**
299. Heavy Grape 10" ruffled bowl - purple - very pretty
300. Small ruffled compote w/beads, 3" high, 5" diam - marigold - name?
301. Diamond & Sunburst 7 pc. wine set - purple - stopper has been polished off at bottom
302. Persian Medallion 9" plate - blue
303. Grape & Cable hatpin holder - green
304. Grape & Cable hatpin holder - marigold
305. **Dugan Vintage dome ftd ruffled bowl - green - rare color, hard to find**
306. Memphis 5 pc. fruit bowl set - marigold - 1 cup has chip
307. Lotus & Grape IC shaped bowl - Persian Blue - rare color
308. M'burg Hanging Cherries 4 pc. table set - marigold - butter dish has tiny nick on bottom edge
309. Pulled Loop 9 1/2" vase - aqua w/marigold overlay - very scarce vase & nice
310. Oriental Poppy 7 pc. water set - white - top edge of pitcher has manufacture roughness, couple spots may be slightly polished
311. Fishscale & Beads 7" plate - marigold - super pretty
312. Plaid IC shaped bowl - green - scarce color
313. **M'burg Hobnail spittoon - amethyst - scarce, nice**
314. Grape & Cable whiskey decanter w/2 shot glasses - purple - one shot glass has small base chip
315. Grape & Cable 5 pc. whiskey set - marigold - always in demand
316. Australian Twisted Gum Tips 9" vase - dark - 3" base, 5" mouth, scarce
317. Australian Twisted Gum Tips 9" vase - marigold - 3" base, 4" mouth, scarce
318. M'burg Many Stars ruffled bowl - amethyst - radium, has 5 pt star, irid. is light in center
319. Fishnet epergne - peach opal - nice
320. Grape & Cable turned in centerpiece bowl - purple
321. Grape & Cable centerpiece bowl w/points straight up - marigold
322. Persian Medallion bonbon - red
323. Horse Medallion ftd rose bowl - lime green w/marigold overlay - scarce piece

- ___ 324. **Wishbone & Spades chop plate - purple - nice**
 ___ 325. Palm Beach whimsy banana boat dish - marigold
 ___ 326. Beaded Cable rose bowl - white - nice
 ___ 327. Beaded Cable rose bowl - aqua opal - butterscotch
 ___ 328. Ski Star 3 in 1 edge dome ftd bowl - purple
 ___ 329. Morning Glory 21" funeral vase - marigold - nice, not many this tall
 ___ **330. M'burg Sunflower pin tray - amethyst - very scarce item**
 ___ 331. Leaf Chain 7" plate - white
 ___ 332. M'burg Trout & Fly ruffled bowl - green - satin, scarce
 ___ 333. Wishbone ftd ruffled bowl - marigold - super pretty
 ___ 334. Blackberry Spray square shaped hat - red - scarce shape
 ___ **335. Six Sided candlesticks - marigold - scarce, nice**
 ___ 336. Scroll Embossed 9" plate - purple - nice
 ___ 337. Enameled Forget Me Not 7 pc. tankard water set - marigold - scarce set
 ___ 338. Holly ruffled bowl - red - scarce
 ___ 339. Holly ruffled bowl - green
 ___ 340. Singing Birds butter dish - marigold - nice
 ___ 341. Australian Pin Ups master bowl - dark - scarce, nice
 ___ 342. Vintage Banded ftd water pitcher - marigold - scarce pitcher
 ___ 343. M'burg Peacock at Urn Mystery bowl - amethyst - radium
 ___ 344. Lady Slipper novelty - marigold
 ___ 345. Apple Blossom Twigs ruffled bowl w/smooth edge - purple - pretty
 ___ 346. Palm Beach 7 1/4" vase - white - scarce
 ___ **347. Stippled Grape & Cable Variant 9" plate w/ribbed back - sapphire - rare plate & nice**
 ___ 348. Old Rose Distilling / Grape & Cable Variant 9" plate w/ribbed back - green - scarce & desirable
 ___ **349. Holly & Poinsettia dome ftd ruffled bowl - marigold - very rare item, not many sold, from the Leonard Collection**
 ___ 350. Beaded Bullseye 11" vase - purple
 ___ 351. Australian Kingfisher master ruffled bowl - marigold - dark & nice
 ___ 352. Peacock & Grape spt ftd ruffled bowl - smokey/ lavender
 ___ 353. Enameled Chrysanthemum bulbous water pitcher - marigold
 ___ 354. M'burg Courthouse ruffled bowl - amethyst - radium, nice
 ___ 355. Leaf Chain 9" plate - white - pretty irid.
 ___ 356. Blackberry Spray JIP CRE hat shape - amberina - we are arguing about this color, what do you think?
 ___ 357. Stork & Rushes w/Lattice Band mug - amethyst
 ___ 358. Captive Rose 9" plate - green
 ___ 359. Vintage 6" plate - amethyst
 ___ 360. M'burg Zig Zag 3 in 1 edge bowl - marigold
 ___ 361. Victorian ruffled bowl - purple - scarce, always in demand
 ___ **362. Rose Show Variant 9" plate - marigold - dark & nice**
 ___ 363. Lattice Hearts 9" plate - purple
 ___ 364. Pair of iridized Christmas balls - marigold - longest one is 6" long
 ___ 365. Acorn Burrs master berry bowl - green
 ___ 366. Stippled Peacocks PCE bowl w/ribbed back - blue
 ___ 367. Stippled Fruits & Flowers 7" plate - marigold - pretty
 ___ **368. Queen's Lamp - green - rare & highly desirable**
 ___ 369. Vintage small size epergne - amethyst
 ___ 370. Fenton's Grape & Cable ruffled fruit bowl w/plain interior - blue - nice
 ___ 371. Matching pair of candlesticks - marigold - one has chip on bottom edge
 ___ 372. Acanthus deep round bowl - purple - super pretty
 ___ 373. Holly ruffled compote - red - nice
 ___ 374. M'burg Hobnail rose bowl - amethyst
 ___ 375. M'burg Hobnail rose bowl - marigold - nice
 ___ **376. Tree Trunk 17" funeral vase - purple - very pretty, highly desirable**
 ___ 377. Crescent Cordial - marigold - by McKee, scarce little piece
 ___ 378. Fenton's Peacock at Urn ruffled compote - aqua - scarce color
 ___ 379. Bedside lamp w/pastel blue shade - shade is very pretty
 ___ 380. Poppy Show ruffled bowl - marigold - chips around base
 ___ 381. Persian Garden fruit bowl - purple - bowl is pretty, tiny nicks on top edge of base, bowl wobbles on base
 ___ 382. Persian Garden 11" IC shaped bowl - white - pretty
 ___ 383. Grape & Cable 7 pc. water set - green - nice
 ___ 384. Concave Diamond 14 pc. water set - celeste blue - lid, 6 tumblers, 6 coasters (1 coaster has chip)
 ___ **385. M'burg Hobstar & Feather diamond shaped bridge set piece - marigold - very rare, couple of chips on saw tooth edge**
 ___ 386. Coin Spot ruffled compote - cobalt blue stretch - very rare, minor nick on outside edge, who cares
 ___ **387. N's Town Pump - green - rare color & highly desirable**
 ___ **388. N's Town Pump - marigold - another rare color, very minor pinpoint on bottom tip of handle**
 ___ **389. N's Town Pump - purple - very pretty example**
 ___ 390. Grape & Cable cologne bottle - green
 ___ **391. Twigs 4" vase - purple - scarce & desirable**
 ___ 392. Pair of iridized spices - marigold - these are cute novelties, 4" tall
 ___ 393. Orange Tree hatpin holder - blue - very pretty, typical nicks on feet
 ___ 394. Fanciful IC shaped bowl - purple - nice
 ___ 395. Daisy & Drape turned in vase - purple - scarce, nice
 ___ 396. Daisy & Drape turned in vase - white
 ___ **397. Orange Tree ruffled bowl - marigold on moonstone - super nice bowl & rare, a great opportunity**
 ___ 398. N's Eight Sided bushel basket - green - nice
 ___ 399. N's Eight Sided bushel basket - purple - nice
 ___ 400. N's Eight Sided bushel basket - blue - nice

PRESORTED
FIRST CLASS MAIL
US POSTAGE
PAID
COPI

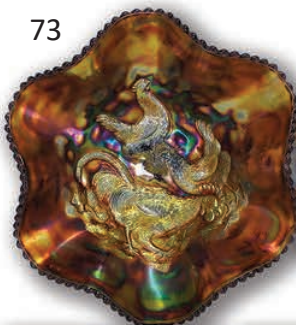
SEECK AUCTIONS
P.O. BOX 377
MASON CITY, IA 50402



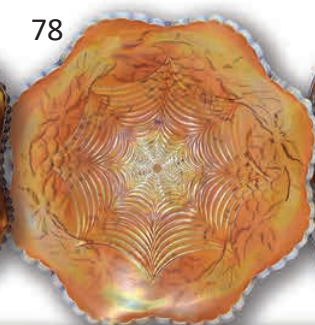
387

**2019 CARNIVAL
GLASS AUCTION**

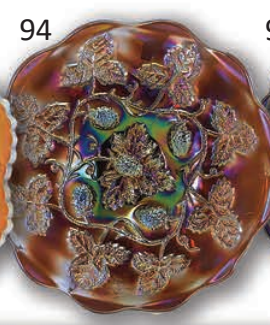
JULY 13 9:30 A.M.
DES MOINES, IA



73



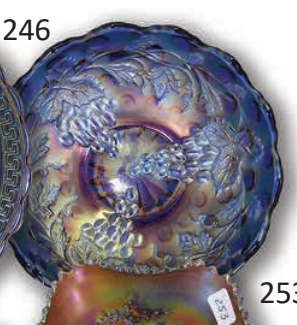
78



94



99



246



53



68



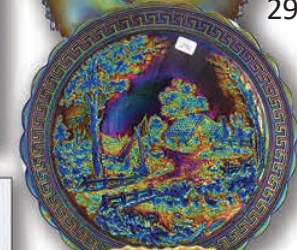
116



125



253



292



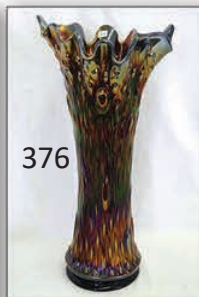
130



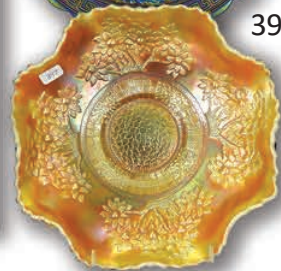
144



298



376



397