

Heart of America  
Carnival Glass  
Association Convention



100

Open  
to the Public

205

30

46

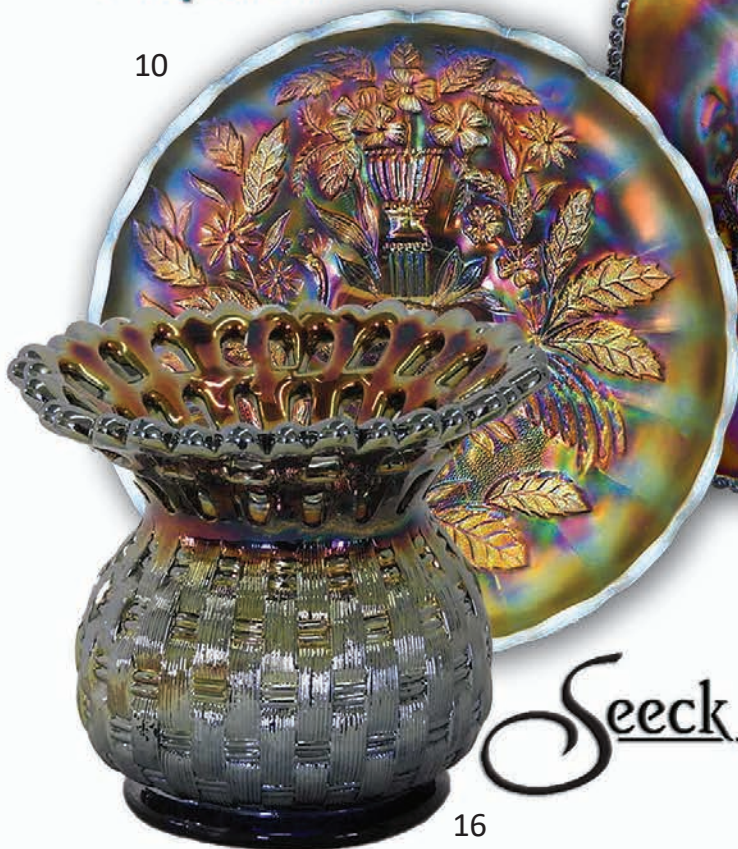
# Carnival Glass 2019 Auction

Saturday, April 27, 9:30 a.m.

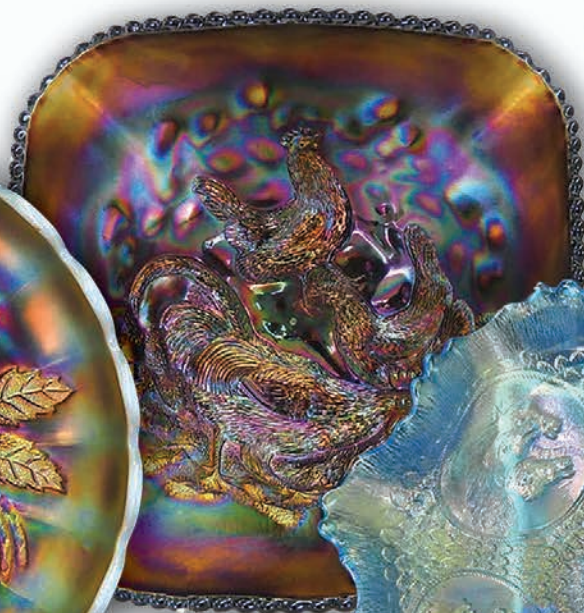
Embassy Suites  
Airport Hotel

Kansas City,  
Missouri

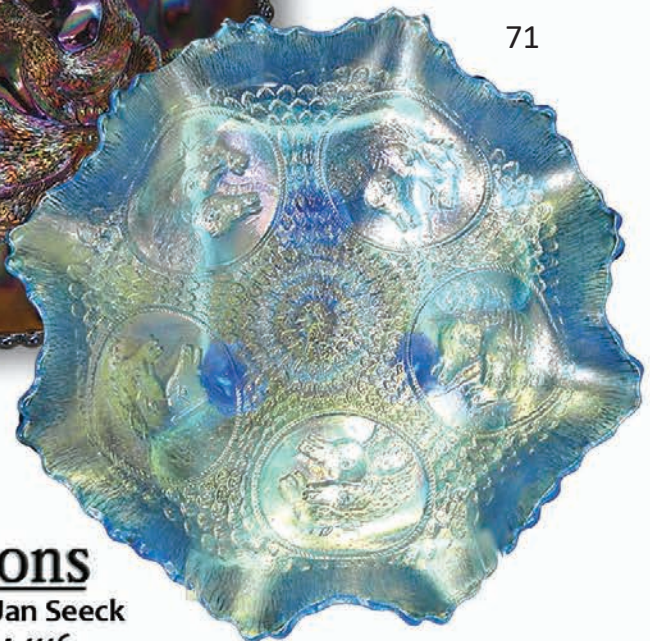
10



16



26



71

Seeck Auctions

Jim & Jan Seeck  
641-424-1116

Jim & Jan Seeck

641-424-1116

**SATURDAY, APRIL 27, 2019 — 9:30 A.M.**

Embassy Suites Airport Hotel — Kansas City, Mo.  
7640 NW Tiffany Springs Parkway

★ FRIDAY PREVIEW

★ ABSENTEE and LIVE BIDDING is available on-line  
through Auction Flex at: [www.seeckauction.com](http://www.seeckauction.com)

NO BUYER'S PREMIUM -- EMAIL: [jimjan@seeckauction.com](mailto:jimjan@seeckauction.com)

*The Judy and Ed Maxwell Collection  
and the  
Dennis and Linda Naphin Collection*

Seeck Auctions is pleased to be selling two great collections this year at the HOACGA convention. The Maxwell collection is out of California and the Naphin collection is out of Canada. Both

collections have come together to bring many rare and beautiful pieces of Carnival Glass to Kansas City for auction. Come to the convention, learn about Carnival Glass and enjoy the fun!

**LODGING**

Reservations can be made by calling the hotel directly at 816-891-7788. Ask for reservations and mention the HOACGA Convention. If you have a problem or questions about reservations at the hotel or questions about the convention,

please call Bob Grissom at: 816-356-5320.

**Visit the Heart of America Carnival Glass  
Association on the Internet at:  
[WWW.HOACGA.COM](http://WWW.HOACGA.COM)**

**Terms:** Cash or Check, VISA, MasterCard and Discover accepted w/proper ID. 4% Clerking Fee on all purchases made using credit cards. Announcements made day of sale take precedence over any printed information.

**ABSENTEE BIDDING OPTIONS**

- 1) **Call us by phone at:** (641) 424-1116
- 2) **Prebid: Enter your bids from our website into our online catalog through the Auction Flex system.**
  - *An exciting advantage of entering your bids online yourself*, is the option to be notified by email if you are outbid on an item. You will know when you are outbid on an item and you can increase your bid on that item or bid on something else.
- 3) **Live Phone Bidding: Is available on pieces with an estimated sale price of \$500 or more.**

If you would like to participate in live phone bidding, contact us by **the Thursday before the auction.**
- 4) **Real-time Bidding:** Bid live during the auction through Auction Flex live webcast bidding.

**There is a \$7 handling charge for each successful bid. Shipping and insurance charges are additional.**

Bidders will be notified by phone/email if their bid(s) are successful. This will be done 1 - 3 days after the auction.

**BID INCREMENTS:**

\$1 - \$100/\$5      \$100 - \$200/\$10      \$200 - \$700/\$25      \$700 - \$1,500/\$50  
\$1,500 - \$3,000/\$100      \$3,000 - \$5,000/\$250      \$5000+ Auctioneer's Discretion

- \_\_\_ 1. Blackberry Spray ruffled hatshape - reverse amberina opal - rare color & super, this one is a beauty!
- \_\_\_ 2. Blackberry Spray ruffled hatshape - lime green opal - scarce color, nice
- \_\_\_ 3. Enameled Stippled Rays 5 pc. round berry set - marigold
- \_\_\_ 4. N's Bushel Basket - smokey lavender - super pretty irid.
- \_\_\_ 5. Swan salt - peach opal - super nice example
- \_\_\_ 6. Open Rose rose bowl - amber - very pretty
- \_\_\_ 7. Scroll Embossed 8" ruffled bowl - emerald green - very pretty, scarce
- \_\_\_ 8. Scroll Embossed 8" ruffled bowl w/File back - purple - super
- \_\_\_ 9. M'burg Holly Sprig 8" square bowl - marigold - radium, nice
- \_\_\_ 10. N's Peacock at Urn master IC bowl - aqua opal - butterscotch & beautiful, a top aqua opal rarity, most desired
- \_\_\_ 11. N's Peacock at Urn master IC bowl - blue - electric & super!!
- \_\_\_ 12. N's Peacock at Urn master IC bowl - ice green - nice
- \_\_\_ 13. N's Peacock at Urn master IC bowl - ice blue - very pretty
- \_\_\_ 14. N's Peacock at Urn 7 pc. IC set - white - nice, hard to find in a set
- \_\_\_ 15. N's Peacock at Urn master IC bowl - purple - nice
- \_\_\_ 16. Blackberry Open Edge whimsey spittoon - blue - Wow! Only one known, one of the top whimsey spittoons, from the Whitley collection
- \_\_\_ 17. Hearts & Flowers ruffled compote - aqua opal - tiny nick on edge of base
- \_\_\_ 18. Rustic 22 1/2" funeral vase w/plunger base - green - extremely hard to find one this tall, great piece!
- \_\_\_ 19. Rustic 24" funeral vase w/plunger base - amethyst - very slight peeling on backside of top point, 24" is pretty tall!
- \_\_\_ 20. Rustic 19" funeral vase w/plunger base - blue - rare & nice
- \_\_\_ 21. Fenton's Peacock at Urn 9" plate - blue - electric & beautiful!
- \_\_\_ 22. Fenton's Peacock at Urn 9" plate - marigold - dark, super nice!
- \_\_\_ 23. Paneled Dandelion tankard water pitcher - blue - scarce, handle is applied on side panel
- \_\_\_ 24. Paneled Dandelion 6 pc. tankard water set - amethyst - nice set, handle is applied on corner of 2 panels
- \_\_\_ 25. Paneled Dandelion 7 pc. tankard water set - marigold - handled applied on corner of 2 panels, nice set
- \_\_\_ 26. Farmyard square shaped bowl - purple - super pretty, hard to find shape, a great piece of glass!
- \_\_\_ 27. Smooth Panels 10 1/2" vase - red - Stretch Glass
- \_\_\_ 28. M'burg Peacock whimsey rose bowl - vaseline - an extreme rarity, a beautiful piece!, has 2 separate 4" cracks in body
- \_\_\_ 29. Shell & Sand ruffled bowl - smoke - very pretty
- \_\_\_ 30. S-Repeat 12 pc. punch set - purple - very rare set, a great opportunity
- \_\_\_ 31. M'burg Whirling Leaves tri-cornered crimped edge bowl - green - radium, very nice
- \_\_\_ 32. M'burg Whirling Leaves tri-cornered crimped edge bowl - marigold - radium, very scarce
- \_\_\_ 33. Grape & Cable hatpin holder - aqua opal - super pretty butterscotch irid., beautiful and extremely rare, has chip on flat bottom of one foot
- \_\_\_ 34. Persian Medallion 9" plate - white - super pretty irid. on this very rare plate
- \_\_\_ 35. Persian Medallion 9" plate - marigold - very scarce, dark & pretty
- \_\_\_ 36. Milady 7 pc. tankard water set - blue - highly desirable set, nice
- \_\_\_ 37. Milady 5 pc. tankard water set - marigold - very scarce, nice
- \_\_\_ 38. Wreathed Cherry 4 pc. table set - purple - scarce, butter dish bottom is signed Dugan Diamond
- \_\_\_ 39. Concord 9" plate - amethyst - pretty for these, scarce
- \_\_\_ 40. Concord 9" plate - blue - extremely rare color, nice
- \_\_\_ 41. Concord 9" plate - marigold - pretty irid., hard color to find
- \_\_\_ 42. N's Thin Rib 12 1/2" midsize vase - aqua opal - butterscotch & beautiful, rare & highly desirable
- \_\_\_ 43. Wreath of Roses whimsey square ruffled flared out punch bowl & base - green - rare whimsey shape, not often seen
- \_\_\_ 44. Wreath of Roses whimsey square ruffled flared out punch bowl & base - amethyst - wow, another whimsey in another color!
- \_\_\_ 45. Wreath of Roses whimsey flared out IC shaped punch bowl & base - marigold - not sure I have seen this shape before, neat whimsey
- \_\_\_ 46. Stippled Grape & Cable bonbon - peach opal - super pretty, very few known, top rarity
- \_\_\_ 47. Stippled Grape & Cable bonbon - aqua opal - another rare aqua opal piece! nice
- \_\_\_ 48. Rose Show ruffled bowl - horehound - super pretty irid. on this rare color, a dandy!
- \_\_\_ 49. Rose Show ruffled bowl - lime green - rare color & very pretty, irid. is great
- \_\_\_ 50. Rose Show ruffled bowl - ice blue - another pretty one
- \_\_\_ 51. Rose Show ruffled bowl - green - also beautiful, green are scarce
- \_\_\_ 52. Rose Show ruffled bowl - blue - a beauty, scarce color
- \_\_\_ 53. Rose Show ruffled bowl - marigold - dark, nice
- \_\_\_ 54. Rose Show ruffled bowl - aqua opal - pastel, pretty
- \_\_\_ 55. Rose Show ruffled bowl - aqua opal - butterscotch, very nice
- \_\_\_ 56. Starflower water pitcher - marigold - super pretty, extremely rare pitcher in marigold, almost impossible to find
- \_\_\_ 57. Starflower water pitcher - blue - Wow, a beauty, extremely rare
- \_\_\_ 58. M'burg Many Stars 3 in 1 edge bowl - marigold - radium, super pretty irid., 6 point star
- \_\_\_ 59. Holly ruffled bowl - celeste blue - very rare bowl, has small spot of epoxy on edge
- \_\_\_ 60. Good Luck ruffled bowl w/BW back - horehound - super pretty
- \_\_\_ 61. Flute toothpick - blue - extremely rare in blue, pretty
- \_\_\_ 62. Thistle 9" plate - marigold - very rare color, pretty
- \_\_\_ 63. Tree Trunk 7 1/2" jardinière - purple - 12" wide at top, extremely rare piece, very few known, does have a crack that runs down one side and up the other but not through the base
- \_\_\_ 64. Tree Trunk 12" elephant funeral vase - purple - neat shape, quite squatty, super rare & highly desirable
- \_\_\_ 65. Tree Trunk 14" funeral vase - purple - just short of being an elephant's foot, rare!
- \_\_\_ 66. Fenton's Peacock at Urn ruffled bowl - amethyst - very pretty
- \_\_\_ 67. Orange Tree w/trunk IC shaped bowl - peach opal - extremely rare bowl, super, super pretty

- \_\_\_ 68. Singing Birds 7 pc. water set - green - scarce, nice
- \_\_\_ 69. Singing Birds 6 pc. water set - purple - scarce
- \_\_\_ **70. Wishbone & Spades 10" ruffled bowl - purple - super pretty, scarce**
- \_\_\_ **71. Horse Medallion 7" ftd ruffled bowl - celeste blue - very rare & highly desired bowl**
- \_\_\_ **72. Imperial Grape IC shaped bowl - marigold - extremely rare shape, also very pretty**
- \_\_\_ **73. Panther ftd centerpiece bowl - blue - extremely rare bowl, has 2" circle in center of bowl missing irid., otherwise beautiful**
- \_\_\_ **74. Panther ftd centerpiece bowl - marigold - dark, super**
- \_\_\_ **75. Panther ftd centerpiece bowl - marigold - pastel & pretty**
- \_\_\_ **76. M'burg Bernheimer Brothers / Many Stars ruffled bowl - blue - very scarce & desirable**
- \_\_\_ **77. Stork & Rushes 15 pc. punch set - amethyst - very rare and seldom sold as a set**
- \_\_\_ 78. Stork & Rushes 14 pc. punch set - marigold - another rare & nice set
- \_\_\_ **79. Peacocks PCE bowl w/ribbed back - aqua opal - extremely rare to find the aqua opal example, a great opportunity**
- \_\_\_ 80. Peacocks PCE bowl w/ribbed back - ice green - scarce color
- \_\_\_ 81. Peacocks PCE bowl w/ribbed back - green - many would call this bowl emerald, has beautiful irid.
- \_\_\_ 82. Peacock PCE bowl w/ribbed back - blue - nice
- \_\_\_ 83. M'burg Marilyn 7 pc. water set - purple - scarce set, 3 tumblers have chips
- \_\_\_ **84. Grape & Cable 7 pc. IC set - ice green - rare to have a complete set, very nice**
- \_\_\_ **85. Spector's Department Store / Heart & Vine 9" plate - marigold - pretty irid., scarce plate**
- \_\_\_ **86. Imperial Flute 8" vase - blue - extremely rare color & nice, fabulous vase!**
- \_\_\_ 87. Round Up low ruffled bowl - purple - fantastic
- \_\_\_ **88. Peacock at the Fountain ftd ruffled fruit bowl - blue-scarce**
- \_\_\_ **89. Dragon & Lotus ruffled bowl - red - always in demand, nice**
- \_\_\_ **90. M'burg Big Fish ruffled bowl - amethyst - radium, scarce**
- \_\_\_ **91. Imperial Grape water carafe - amber - super rare color & beautiful**
- \_\_\_ **92. Imperial Grape water carafe - emerald green - rare color, beautiful!!**
- \_\_\_ **93. Imperial Grape water carafe - pastel marigold - pastel & fabulous**
- \_\_\_ 94. Imperial Grape water carafe - purple - super, what a line up!
- \_\_\_ **95. Ripple 12 1/2" funeral vase - purple - 4 5/8" base, chip on base**
- \_\_\_ 96. Ripple 14 1/2" funeral vase - marigold - 4 5/8" base, nice
- \_\_\_ 97. Acorn Burrs 4 pc. table set - purple - spooner is cracked, sugar bowl has chips on base, nick on butter dish base
- \_\_\_ **98. Nippon 9" plate w/BW back - green - super pretty, very scarce**
- \_\_\_ 99. Ripple 7 1/2" vase - amber - 2 7/8" base
- \_\_\_ **100. Grape & Cable 14 pc. master punch set - blue - very rare color for these & nice**
- \_\_\_ **101. Grape & Cable 14 pc. master punch set - purple - always in demand, nice**
- \_\_\_ **102. Grape & Cable 14 pc. master punch set - marigold - super pretty set, one punch cup is stippled**
- \_\_\_ 103. Persian Medallion chop plate - blue - much better than 95% of them out there, just a dandy
- \_\_\_ **104. Orange Tree whimsy ladies spittoon - marigold - made from the powder jar bottom, just a fabulous piece, has note from family member of original owner**
- \_\_\_ 105. Open Rose 9" plate - amber - pretty, small chip on rose
- \_\_\_ **106. Oriental Poppy tankard water pitcher & 1 tumbler - white - scarce, nice**
- \_\_\_ 107. Oriental Poppy tankard water pitcher & 1 tumbler - green - pretty
- \_\_\_ 108. Oriental Poppy 7 pc. tankard water set - purple - nice, collector's favorite
- \_\_\_ 109. Oriental Poppy tankard water pitcher & 1 tumbler - marigold - dark, nice
- \_\_\_ **110. NUART Chrysanthemum chop plate - emerald green - super pretty & extremely rare, epoxy on edge**
- \_\_\_ **111. NUART Chrysanthemum chop plate - amber - very tiny nicks in ring in pattern, may have been done at factory, super pretty example**
- \_\_\_ **112. Fashion 8 pc. punch set - smoke - very rare color, small chips on a few of the ruffled points, seem to be common on this smoke set**
- \_\_\_ 113. Fashion punch bowl top - purple - talk about rare! as rare as they can get, has a nick on a point, comes with a marigold base
- \_\_\_ **114. N's Town Pump - purple - very nice example of this classic piece**
- \_\_\_ 115. Stag & Holly ftd chop plate - marigold - very pretty
- \_\_\_ **116. Stippled Peacocks PCE bowl w/ribbed back - blue - electric & super**
- \_\_\_ 117. Chrysanthemum ruffled bowl - red - rare, pretty, chip on edge
- \_\_\_ **118. M'burg Tulip Scroll 7 1/2" vase - amethyst - very scarce vase, nice**
- \_\_\_ 119. Wide Panel epergne with no center lily - ice green - one side lily has nick on bottom, anyone have an extra center lily?
- \_\_\_ 120. Wide Panel epergne - green - scarce, minor nicks around holes of base, center lily base has been broken off and glued
- \_\_\_ 121. Persian Garden 7 pc. IC shaped set - white - scarce as a set, couple of saucers have rough bases
- \_\_\_ **122. Peacock Tail 9" plate - marigold - dark & super, scarce**
- \_\_\_ 123. Windmill milk pitcher - purple - scarce, nice
- \_\_\_ **124. Rustic 18 1/2" funeral vase - white - very pretty, scarce**
- \_\_\_ **125. Rustic 18" funeral vase - green - very pretty, highly desirable**
- \_\_\_ **126. Rustic 22 1/2" funeral vase - blue - this one is stretched more than most**
- \_\_\_ 127. Rustic 20 1/2" funeral vase - marigold - dark, nice
- \_\_\_ 128. Peacock at the Fountain ruffled compote - aqua opal - butterscotch, beautiful & rare, base has been slightly buffed all the way around
- \_\_\_ 129. Peacock at the Fountain ruffled compote - blue - scarce, nice
- \_\_\_ **130. Imperial Grape 8 pc. punch set - purple - very pretty set, scarce**
- \_\_\_ 131. Daisy & Drape flared out vase - aqua opal - a nice one
- \_\_\_ 132. Daisy & Drape flared out vase - marigold - dark, pretty

- \_\_\_ 133. **Farmyard square ruffled bowl - purple - very pretty bowl, highly desirable, second Farmyard of the day!**
- \_\_\_ 134. Fanciful 9" plate - white - nice
- \_\_\_ 135. **Shell & Sand 9" plate - purple - a beauty, very rare**
- \_\_\_ 136. **Springtime 7 pc. water set - purple - nice set, scarce**
- \_\_\_ 137. M'burg Vintage 10" IC shaped bowl w/Hobnail back - green - satin, rare, cracked
- \_\_\_ 138. M'burg Vintage 10" IC shaped bowl w/Hobnail back - marigold - satin, tiny nick on base seam, missing irid. on face
- \_\_\_ 139. **Imperial Grape 7 pc. water set - purple - super beautiful set**
- \_\_\_ 140. **Imperial Grape water pitcher - pastel marigold - fantastic irid., Imperial pastel marigold is the best!**
- \_\_\_ 141. **Lotus & Grape 9" plate - green - scarce, very nice**
- \_\_\_ 142. **Lotus & Grape 9" plate - blue - very scarce, nice, point made of epoxy**
- \_\_\_ 143. Ripple 18 1/2" funeral vase - purple - 4 5/8" base, very scarce, repaired chip on bottom rib
- \_\_\_ 144. Ripple 18" funeral vase - marigold - 4 5/8" base, nice
- \_\_\_ 145. **Feather Stitch 9" plate or very low IC shaped bowl - blue - rare shape not matter which one**
- \_\_\_ 146. **Orange Tree w/Trunk 9" plate - green - fantastic, a beautiful plate in this rare color**
- \_\_\_ 147. Orange Tree 9" plate - blue - scarce, nice
- \_\_\_ 148. Orange Tree 9" plate - marigold - dark, nice
- \_\_\_ 149. **Grape & Cable 8 pc. midsize punch set - blue - very scarce color & nice, punch cups are stippled**
- \_\_\_ 150. Grape & Cable 8 pc. midsize punch set - purple - always in demand
- \_\_\_ 151. M'burg Trout & Fly 3 in 1 edge bowl - green - satin, nice
- \_\_\_ 152. M'burg Trout & Fly 3 in 1 edge bowl - marigold - satin, nice
- \_\_\_ 153. **Wishbone & Spades 5 pc. IC shaped berry set - purple - pretty, super scarce**
- \_\_\_ 154. **Apple Tree water pitcher - white - scarce color**
- \_\_\_ 155. Sunflower spt ftd ruffled bowl - green - super
- \_\_\_ 156. Sunflower spt ftd ruffled bowl - marigold - dark, super, many would call this pumpkin
- \_\_\_ 157. Sunflower spt ftd ruffled bowl - marigold - pastel, pretty
- \_\_\_ 158. Flute 8 pc. punch set - purple - super pretty & scarce, chip on back edge of bowl
- \_\_\_ 159. Stag & Holly lg size IC shaped ftd bowl - amberina with red streaks, pretty neat & rare
- \_\_\_ 160. **Tree Trunk 7" squatty vase - ice blue - super irid.**
- \_\_\_ 161. Acorn Burrs 6 pc. berry set - green
- \_\_\_ 162. Heavy Iris tankard water pitcher - lavender - very rare color & pretty, has about a 1 1/4" crack where top of handle is applied, probably been there since it was made
- \_\_\_ 163. Heavy Iris 7 pc. tankard water set - purple
- \_\_\_ 164. Grape & Cable master berry bowl - green - super pretty
- \_\_\_ 165. **Embroidered Mums 9" plate w/ribbed back - ice green - pretty example, quite scarce**
- \_\_\_ 166. Orange Peel 5 pc. punch set - aqua - very scarce set
- \_\_\_ 167. **M'burg Bullseye & Loop 5 1/2" squatty vase - amethyst - great vase**
- \_\_\_ 168. **Tornado lg size whimsy shaped vase - purple - a very neat tornado whimsy, has a chip on the base**
- \_\_\_ 169. **Tornado Variant 6" vase w/green tornadoes - marigold - very scarce item & nice**
- \_\_\_ 170. Tornado small size vase - purple - pretty example
- \_\_\_ 171. Dahlia 5 pc. water set w/blue Dahlias - white - super nice w/great gold paint
- \_\_\_ 172. **Rose Show Variant 9" plate - renninger blue - scarce, nice**
- \_\_\_ 173. **Rose Show Variant 9" plate - marigold - super pretty**
- \_\_\_ 174. Grape & Cable 8 pc. round small size punch set - green - unusual round shape, one cup stippled
- \_\_\_ 175. Grape & Cable 8 pc. small size punch set - purple - tiny pinpoint on back edge of point
- \_\_\_ 176. Roses & Ruffles GWTW lamp - marigold - shade has 2 small spider shaped bursts in side, super pretty irid.
- \_\_\_ 177. M'burg Blackberry Wreath 10" square shaped crimped edge bowl - marigold - radium, nice
- \_\_\_ 178. **Stippled Three Fruits Medallion spt ftd ruffled bowl- lime green opal - rare color & nice**
- \_\_\_ 179. Stippled Three Fruits Medallion spt ftd ruffled bowl - green - most would call this emerald, beautiful, some excess glass between points
- \_\_\_ 180. Grape Arbor 7 pc. tankard water set - white - scarce set, nice, one tumbler has restored base
- \_\_\_ 181. Grape Arbor tankard water pitcher - purple
- \_\_\_ 182. Grape Arbor tankard water pitcher - lime green - extremely rare color, crack around bottom
- \_\_\_ 183. Pair of Grape Arbor tumblers - ice green - nice
- \_\_\_ 184. **Captive Rose 9" plate - green - super pretty**
- \_\_\_ 185. Captive Rose 9" plate - blue - very nice
- \_\_\_ 186. Memphis fruit bowl & base - purple - chip on bowl edge
- \_\_\_ 187. Grape & Cable powder jar bottom - aqua opal - butterscotch, anyone with a lid??
- \_\_\_ 188. Grape & Cable 4 pc. table set - green - scarce color, polishing on base of the sugar
- \_\_\_ 189. **Stippled Grape & Cable Variant ruffled bowl w/ribbed back - sapphire - rare color, pretty bowl**
- \_\_\_ 190. **Stippled Grape & Cable Variant ruffled bowl w/ribbed back - green - a beauty, most would call emerald**
- \_\_\_ 191. **Hattie ruffled bowl - blue - extremely rare bowl, very few around, has a questionable line in base, can't tell if straw mark or crack, fantastic irid.**
- \_\_\_ 192. **Grape & Gothic Arches 7 pc. water set - green - scarce color, nice**
- \_\_\_ 193. Grape & Gothic Arches 7 pc. water set - blue - another nice set
- \_\_\_ 194. M'burg Peacock master berry bowl - mari. - radium, nice
- \_\_\_ 195. **N's Peacock at Urn chop plate - purple - super pretty example, these are scarce**
- \_\_\_ 196. Luster Rose ftd centerpiece bowl - amber - scarce, nice
- \_\_\_ 197. Luster Rose fernery - amber - this is what the centerpiece was made from
- \_\_\_ 198. Wreath of Roses 8 pc. round shaped punch set - amethyst - has Vintage interior
- \_\_\_ 199. Wreath of Roses 8 pc. round shaped punch set - green - has Vintage interior
- \_\_\_ 200. Little Fishes ftd IC shaped bowl - blue - scarce, nice
- \_\_\_ 201. **Stippled Three Fruits 9" plate w/ribbed back - sapphire - rare color, nice**
- \_\_\_ 202. Stippled Three Fruits 9" plate w/ribbed back - blue - super example
- \_\_\_ 202a. Stippled Three Fruits 9" plate w/ribbed back - purple - nice
- \_\_\_ 203. **Butterfly & Berry ftd centerpiece bowl - green - very rare bowl, not many around plus pretty!**
- \_\_\_ 204. **Tree Trunk 19 1/2" funeral vase - white - very rare color & highly desirable, has 1 1/2" burst in the side of vase**

- \_\_\_ **205. Tree Trunk 19" funeral vase - blue - super pretty example, scarce color**
- \_\_\_ 206. Peacock & Grape ruffled bowl - red - scarce
- \_\_\_ 207. Scroll Embossed 4 pc. ruffled berry set - purple - pretty, tiny nick on backside of point on master bowl
- \_\_\_ 208. Dugan Stork & Rushes 7 pc. water set - blue - nice, tiny nick on one bead on top band
- \_\_\_ 209. Wishbone tri-cornered ftd dish - marigold - very pretty, quite hard to get
- \_\_\_ **210. Grape & Cable whimsey spittoon - purple - an extremely rarity, made from powder jar bottom, fabulous in any collection**
- \_\_\_ 211. Acorn Burrs 7 pc. berry set - purple
- \_\_\_ 212. Grape & Cable banana boat - ice blue - scarce, nice
- \_\_\_ 213. Stippled & Banded Grape & Cable banana boat - blue - scarce combination
- \_\_\_ **214. Farmyard 8 ruffled bowl - purple - super pretty, third one of the sale, all different shapes so far**
- \_\_\_ 215. Concord ruffled bowl - green - nice
- \_\_\_ **216. Peacocks 9" plate w/ribbed back - ice blue - scarce color, super pretty**
- \_\_\_ 217. Peacocks 9" plate w/ribbed back - marigold - super dark w/super pretty irid., fabulous, pumpkin
- \_\_\_ 218. Peacocks 9" plate w/plain back - ice green - pretty
- \_\_\_ **219. Morning Glory 13" funeral vase - purple - very pretty, 9 1/2" mouth**
- \_\_\_ 220. Morning Glory 15" funeral vase - marigold - even from top to bottom, a nice one
- \_\_\_ 221. Acorn Burrs 4 pc. water set - purple - scarce
- \_\_\_ **222. Butterfly & Tulip square shaped ftd bowl - purple - a collector's favorite, has manufacture split on edge**
- \_\_\_ **223. Stippled Good Luck 9" plate w/ribbed back - renninger blue - for pretty for these**
- \_\_\_ **224. Leaf Chain 7" ruffled bowl - ice green - rare color w/pretty irid.**
- \_\_\_ **225. Peacock at the Fountain 8 pc. punch set - purple - scarce**
- \_\_\_ 226. Peacock at the Fountain 8 pc. punch set - marigold - scarce, nice, one cup has chip on base
- \_\_\_ **227. Beaded Cable rose bowl - ice green - scarce, nice**
- \_\_\_ **228. Basketweave Open Edge 7 1/2" vase - blue - super neat item, very scarce and nice!**
- \_\_\_ 229. Holly 9" plate - amethyst - very pretty in this hard to find color
- \_\_\_ 230. Holly 9" plate - green - nice
- \_\_\_ 231. Holly 9" plate - blue - a beauty
- \_\_\_ 232. Holly 9" plate - marigold - nice
- \_\_\_ **233. Leaf Chain 9" plate - blue - a beautiful example, scarce**
- \_\_\_ 234. Ripple 18" vase - purple - 3 7/8" base, has chip on bottom rib
- \_\_\_ 235. Ripple 15 1/2" vase - aqua - 3 7/8" base, scarce color, chips on bottom rib
- \_\_\_ 236. Embroidered Mums ruffled bowl w/ribbed back - blue - nice
- \_\_\_ 237. Chrysanthemum lg size ftd IC shaped bowl - white - extremely rare color, lacks some irid.
- \_\_\_ **238. Blackberry Block 7 pc. water set - marigold - very pretty**
- \_\_\_ **239. Ripple 10 1/2" vase - yellow - 2 7/8" base, very unusual color, super neat vase!**
- \_\_\_ 240. Stippled Peacocks 9" plate w/ribbed back - blue - scarce, nice
- \_\_\_ 241. Stippled Peacocks 9" plate w/ribbed back - marigold - super pretty w/lots of pinks & yellows
- \_\_\_ 242. Fruit Salad 8 pc. punch set - marigold - scarce
- \_\_\_ 243. Ripple 9" vase - lavender - 3 7/8" base, pretty
- \_\_\_ **244. Grape & Gothic Arches 4 pc. table set - green - pretty set, hard to find color**
- \_\_\_ 245. Grape & Gothic Arches 4 pc. table set - blue - nice sets
- \_\_\_ **246. M'burg Grape Leaves ruffled bowl - amethyst - radium, nice**
- \_\_\_ **247. Peacock & Grape 9" plate - marigold - dark, super**
- \_\_\_ **248. N's Corn vase - aqua opal - extremely rare color, from the cable down, entire base is made of epoxy, great shelf piece**
- \_\_\_ 249. N's Corn vase w/stalk base - purple - scarce
- \_\_\_ **250. Panther ftd ruffled master berry bowl - blue - pretty**
- \_\_\_ 251. Tree Trunk 13 1/2" midsize vase - white - scarce, has small spot of epoxy on top edge
- \_\_\_ **252. Tree Trunk 14" midsize vase - blue - scarce color, nice**
- \_\_\_ 253. Tree Trunk 13" midsize vase - green - nice
- \_\_\_ 254. Tree Trunk 12 1/2" vase - purple
- \_\_\_ **255. Windmill water pitcher - violet blue - very pretty in this rare color, great opportunity**
- \_\_\_ 256. Good Luck 9" plate w/ribbed back - green - super pretty
- \_\_\_ 257. Peacocks 9" plate w/BW back - white - pretty irid., scarce with BW back
- \_\_\_ 258. Peacocks 9" plate w/ribbed back - marigold - pretty
- \_\_\_ 259. M'burg Peacock at Urn 7" shotgun 3 in 1 edge bowl - green - radium - couple tiny pinpoint on base
- \_\_\_ 260. Tiger Lily water pitcher - purple - scarce color
- \_\_\_ 261. Tiger Lily 7 pc. water pitcher & 1 tumbler - green
- \_\_\_ 262. Stippled & Banded Grape & Cable ruffled fruit bowl - blue - scarce
- \_\_\_ 263. Scroll Embossed 9" plate - purple - nice
- \_\_\_ **264. Imperial Grape large ruffled 10 1/2" bowl - blue - super rare color, pretty!**
- \_\_\_ **265. Vintage IC sauce - celeste blue - very pretty stretchy irid. on this rare little piece**
- \_\_\_ 266. Stippled Grape & Cable 8 pc. punch set - blue - rare set, nice
- \_\_\_ 267. Grape & Cable dresser tray - green - nice
- \_\_\_ 268. Apple Blossom Twigs low ruffled bowl - lavender - pretty
- \_\_\_ 269. Apple Blossom Twigs ruffled bowl w/smooth edge - purple - nice
- \_\_\_ **270. Farmyard 6 ruffled bowl - purple - fourth in the sale, chickens are beautiful on this rare one!**
- \_\_\_ 271. Butterfly & Fern 3 pc. water set - amethyst
- \_\_\_ 272. Fentonia butter dish - blue - scarce
- \_\_\_ **273. NUART Homestead chop plate - emerald green - super rare plate & super beautiful**
- \_\_\_ **274. Homestead chop plate - amber - very pretty irid., scarce color**
- \_\_\_ 275. Homestead chop plate - smoke - has large repaired chip on base, chip on house roof in pattern
- \_\_\_ 276. Floral & Grape water pitcher - blue - pretty
- \_\_\_ 277. Ripple 13 1/2" funeral vase - marigold - 4 5/8" base, nice
- \_\_\_ 278. Good Luck PCE bowl w/ribbed back - green
- \_\_\_ 279. Good Luck PCE bowl w/ribbed back - blue - pretty
- \_\_\_ 280. Good Luck PCE bowl w/ribbed back - purple - nice
- \_\_\_ **281. Tree Trunk 10 1/2" vase - aqua opal - scarce, nice**
- \_\_\_ 282. Double Stemmed Rose dome ftd ruffled bowl - purple - pretty

- \_\_\_ **283. Hearts & Flowers 9" plate w/ribbed back - marigold - dark & super!!**
- \_\_\_ 284. Enameled Ground Cherries 7 pc. water set - blue - nice
- \_\_\_ 285. Dahlia 7 pc. ftd berry set w/blue Dahlias - white - super nice, 2 sauces have damage
- \_\_\_ **286. Rustic 10" vase - peach opal - rare color for these & very nice**
- \_\_\_ 287. Flowers & Frames dome ftd ruffled bowl - purple - nice
- \_\_\_ **288. Imperial Flute #3939 round 8 pc. punch set - marigold - only one I can remember seeing in the round shape, very rare**
- \_\_\_ 289. Wishbone chop plate - green - rare plate, not many around
- \_\_\_ 290. Ripple 15" vase - purple - 3 3/8" base
- \_\_\_ 291. N's Peacock at Urn IC sauce - green - rare color
- \_\_\_ 292. Pair of N's Peacock at Urn IC sauces - purple - one has manufacture defect
- \_\_\_ 293. Pair of N's Peacock at Urn IC sauces - marigold - both nice
- \_\_\_ **294. Tree Trunk elephant's foot 13" vase - purple - super nice, very rare**
- \_\_\_ 295. Scroll Embossed 8" round bowl - purple - nice
- \_\_\_ 296. Enameled Silver Queen 7 pc. water set - marigold - scarce
- \_\_\_ **297. Peacocks ruffled bowl w/ribbed back - aqua - rare color, pretty**
- \_\_\_ **298. Peacocks ruffled bowl w/ribbed back - aqua opal - pastel, nice**
- \_\_\_ 299. Peacocks ruffled bowl w/ribbed back - blue - pretty
- \_\_\_ 300. Peacocks ruffled bowl w/ribbed back - purple - birds are beautiful
- \_\_\_ 301. Peacocks ruffled bowl w/ribbed back - aqua opal - butterscotch, nice
- \_\_\_ 302. Wreathed Cherry 3 pc. water set - purple - pretty pitcher
- \_\_\_ **303. Fantail ftd ruffled bowl - blue - nice**
- \_\_\_ 304. Open Rose 9" plate - pastel marigold - pretty irid.
- \_\_\_ 305. M'burg Peacock 10" ruffled bowl - amethyst - radium, nice
- \_\_\_ 306. Three Fruits ruffled bowl w/plain back - lavender - very pretty & unique bowl
- \_\_\_ 307. Dugan Peacock at the Fountain 5 pc. water set - blue
- \_\_\_ 308. Morning Glory 18 1/2" funeral vase - purple - nice
- \_\_\_ **309. Hearts & Flowers ruffled bowl w/ribbed back - green - fabulous, may be the best one I have ever sold**
- \_\_\_ 310. Hearts & Flowers ruffled bowl w/ribbed back - ice blue
- \_\_\_ **311. Many Fruits 8 pc. round punch set - purple - super pretty set, highly desirable**
- \_\_\_ 312. Many Fruits 8 pc. ruffled punch set - purple - silvery
- \_\_\_ 313. Stag & Holly spt ftd ruffled bowl - red - scarce, repaired chip on cleat, light irid. in center of bowl
- \_\_\_ 314. N's Stippled Peacock at Urn 6 pc. IC set - blue - outstanding set
- \_\_\_ 315. Grape & Cable 7 pc. water set - purple
- \_\_\_ 316. M'burg Hobnail Swirl 9 1/2" vase - amethyst - manufacture peeling on top edge
- \_\_\_ 317. Luster Rose water pitcher - amber - scarce color
- \_\_\_ 318. Grape & Cable ftd round fruit bowl - purple - nice, points are straight up
- \_\_\_ 319. Double Stemmed Rose dome ftd 3 in 1 edge bowl - purple - unique radium type irid.
- \_\_\_ 320. Rambling Rose 7 pc. water set - blue
- \_\_\_ **321. Farmyard 8 ruffled bowl - purple - last of the day, epoxy on back of one point**
- \_\_\_ 322. Poppy Show 9" plate - white
- \_\_\_ **323. Diamond Rib 19" funeral vase - amethyst - made into a lamp, don't see any damage on vase except that it has a drilled hole in bottom, cloth shade, total lamp size is 34", oversized shipping required on this one**
- \_\_\_ **324. Lattice & Grape whimsey spittoon - marigold - made from the tumbler, a fantastic item, these spittoon whimseys are so rare!**
- \_\_\_ 325. Stippled Petal dome ftd banana boat shaped dish - purple - nice, chip on base
- \_\_\_ 326. Formal JIP vase - purple - hard to find item, highly desirable
- \_\_\_ 327. Formal JIP vase - marigold - another highly desired vase
- \_\_\_ 328. Peacock at the Fountain 4 pc. table set - purple - scarce, nice
- \_\_\_ 329. M'burg Fleur de Lis ruffled bowl w/crimped edge - amethyst - radium
- \_\_\_ 330. Dandelion 7 pc. tankard water set - purple - highly desired
- \_\_\_ **331. Rose Show 9" plate - lime green opal - fantastic irid. on this rare plate, many people call this ice green opal**
- \_\_\_ **332. Rose Show 9" plate - lime green - rare color & nice, many people call these vaseline**
- \_\_\_ **333. Rose Show 9" plate - emerald green - super, super pretty irid., chip on rose**
- \_\_\_ **334. Rose Show 9" plate - amethyst - fantastic plate**
- \_\_\_ **335. Rose Show 9" plate - blue - super electric, can't ask for much more!**
- \_\_\_ **336. Rose Show 9" plate - marigold - pretty from one edge to the other!**
- \_\_\_ 337. Dugan Cherries IC shaped bowl - purple - pretty, scarce in the IC shape
- \_\_\_ 338. Waterlily ftd ruffled sauce - red - scarce, nice
- \_\_\_ 339. M'burg Nesting Swan ruffled bowl - amethyst - satin, nice
- \_\_\_ **340. Imperial Grape 9" plate - purple - super pretty, quite scarce**
- \_\_\_ **341. Rustic 22" funeral vase w/plunger base - amethyst - fabulous vase, very tall for these**
- \_\_\_ **342. Rustic 19" funeral vase w/plunger base - blue - scarce, very nice, the end of lots of great vases in this auction!**
- \_\_\_ 343. Lot of 6 Grape & Cable punch cups - white
- \_\_\_ **344. Stippled Grape & Cable Variant 9" plate w/ribbed back - sapphire - super irid., beautiful**
- \_\_\_ 345. Imperial Grape goblet & ruffled compote - amber
- \_\_\_ 346. Windmill tumblers - purple AND violet
- \_\_\_ 347. Pair of Imperial Grape tumblers - amber
- \_\_\_ 348. 1974 HOACGA Good Luck 7 pc. water set - red

SEECK AUCTIONS  
P.O. BOX 377  
MASON CITY, IA 50402

PRESORTED  
FIRST CLASS MAIL  
US POSTAGE  
PAID  
COPI



168

**2019 CARNIVAL  
GLASS AUCTION**  
Sat., April 27 9:30 a.m.  
Embassy Suites Airport Hotel  
Kansas City, Missouri

