

So. California
Carnival Glass Club Convention
Saturday, March 9
9:30 a.m.

SC 69



SC 9

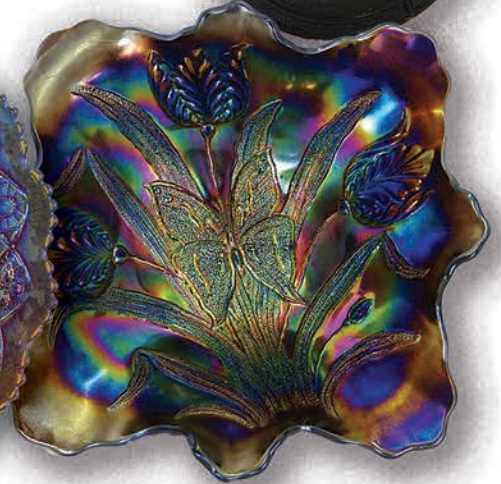


SC 277



SC 274

SC 35



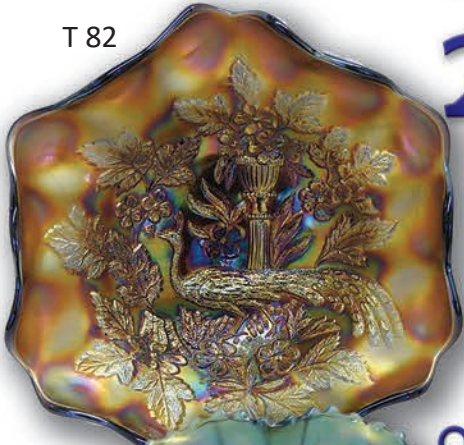
SC 78

Carnival Glass 2019 Auctions

T 6 and 280

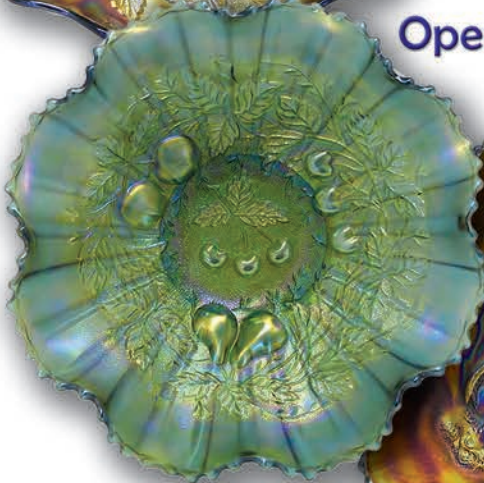
Texas Carnival
Glass Club Convention
Saturday, March 23
9:30 a.m.

T 82

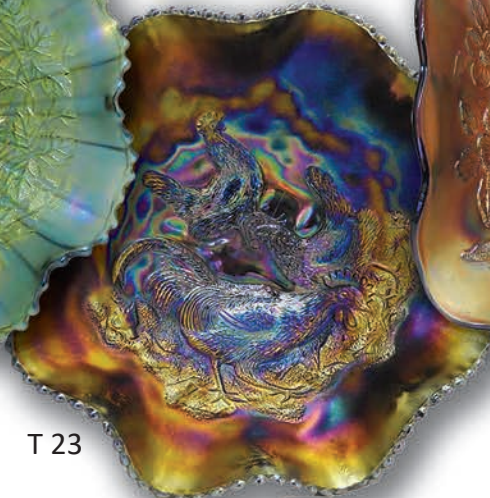


T 112

Open to the Public



T 10



T 23



Seeck Auctions
Jim & Jan Seeck
641-424-1116



Southern California Carnival Glass Club Convention

Saturday, March 9, 2019 — 9:30 A.M.

*Azure Hotel & Suites, 1945 E. Holt Blvd.
Ontario, California 91764*

Texas Carnival Glass Club Convention

Saturday, March 23, 2019 — 9:30 A.M.

*Wyndham Dallas Suites- Park Central
7800 Alpha Road, Dallas, Texas 75240*

Bill and Jane Kenney Collection

Delbert Johnston Collection

Open to the Public

Previews: Friday Evenings

ABSENTEE & LIVE BIDDING is available on-line through Auction Flex at: www.seeckauction.com

NO BUYER'S PREMIUM -- EMAIL: jimjan@seeckauction.com

Lodging

March 9 Auction: If staying at the Hotel, call direct (Press 0) for room reservations: 909-390-7778. Cutoff date for rate is Feb 22nd, 2019. San Diego / Southern Calif. Convention info: Contact Jeff Adams at 661-718-3831 or jeffnadine@msn.com **Club Website:** www.socalcarnivalglassclub.com

March 23 Auction: If staying at the Hotel, Call the hotel directly at 972-233-7600 (option 2) to make your reservation. Let them know you are with the Texas Carnival Glass Club March 2019. Group code is: 03206822TC Hotel deadline is Wed. March 6th. Texas Club Convention info: Contact President Emmett Morgan at: 979-836-7896 **Club Website:** www.texas carnival glass.org

Terms: Cash or Check, VISA, MasterCard and Discover accepted w/proper ID. **4% Clerking Fee** on all purchases made using credit cards. Announcements made day of sale take precedence over any printed information.

** Sales Tax will be charged, please bring your tax-exempt numbers.

ABSENTEE BIDDING OPTIONS

1) Call us by phone at: (641) 424-1116

2) Prebid: Enter your bids from our website into our online catalog through the Auction Flex system.

- An exciting advantage of entering your bids online yourself, is the option to be notified by email if you are outbid on an item. You will know when you are outbid on an item and you can increase your bid on that item or bid on something else.

3) Live Phone Bidding: Is available on pieces with an estimated sale price of \$500 or more.

If you would like to participate in live phone bidding, contact us by **the Thursday before the auction.**

4) Real-time Bidding: Bid live during the auction through Auction Flex live webcast bidding.

There is a \$7 handling charge for each successful bid. Shipping and insurance charges are additional.

Bidders will be notified by phone/email if their bid(s) are successful. This will be done 1 - 3 days after the auction.

BID INCREMENTS:

\$1 - \$100/\$5

\$100 - \$200/\$10

\$200 - \$700/\$25

\$700 - \$1,500/\$50

\$1,500 - \$3,000/\$100

\$3,000 - \$5,000/\$250

\$5000+ Auctioneer's Discretion

◆◆◆ Saturday, March 9 ◆◆◆

- ___ 1. Valentine 10" ruffled bowl - marigold
- ___ 2. Windmill 8" round bowl - smoke - nice
- ___ 3. Windmill 8" round bowl - purple - nice
- ___ 4. Maize 6 1/2" vase w/blue stalk - small bruise on top edge
- ___ 5. Maize cruet w/blue stalk
- ___ 6. Maize salt & peppers
- ___ 7. Star of David ruffled bowl - purple - super pretty
- ___ 8. M'burg Little Stars 7" IC shaped bowl - green - satin, scarce in this shape
- ___ 9. Rustic 18" funeral vase - white - scarce & very nice
- ___ 10. Rustic 18" funeral vase - green - super pretty
- ___ 11. Rustic 21" funeral vase - amethyst - another real beauty!
- ___ 12. Rustic 18" funeral vase - blue - a beauty
- ___ 13. Rustic 21" funeral vase - marigold - nice, even color from top to bottom w/beautiful irid.

- ___ 14. Scroll Embossed 7" ruffled bowl w/file back - purple - irid. spots in bowl
- ___ 15. Cherry Chain chop plate- marigold- super pretty, very rare
- ___ 16. Fishnet epergne - peach opal - lily has been glued into the base
- ___ 17. Little Fishes 10" ftd ruffled bowl - blue - manufacture peeling around base
- ___ 18. Little Fishes 10" ftd ruffled bowl - marigold - very nice
- ___ 19. Grape & Cable 5 pc. whiskey set - purple - nice set
- ___ 20. Grape & Cable 7 pc. whiskey set - marigold - typical nick by stopper hole
- ___ 21. M'burg Little Stars 7" ruffled bowl - amethyst - satin
- ___ 22. Poppy Show 9" plate - green - scarce color, tiny chip off back edge
- ___ 23. Poppy Show 9" plate - blue - super pretty w/electric highlights

24. **Poppy Show 9" plate - ice blue - scarce**
25. Poppy Show 9" plate - white - chip on collar base & chip on poppy
26. Poppy Show 9" plate - marigold - epoxy on collar base
27. Shell & Sand ruffled bowl - purple - pretty, has a polished point
28. Shell & Sand ruffled bowl - marigold - pretty
29. Octagon lg size water pitcher & 3 tumblers - purple
30. Daisy Wreath low round bowl - peach opal
31. N's Thin Rib 8" JIP vase - purple - very pretty for these
32. **Grape & Cable hatpin holder - ice blue - very rare color, small chip on bottom of one foot, has a smokey blue look to it**
33. Grape & Cable hatpin holder - green - nice
34. Grape & Cable hatpin holder - purple
35. Grape & Cable hatpin holder - marigold
- 35a. **Hattie chop plate - purple - super pretty, very scarce & desirable**
36. Chrysanthemum ruffled bowl - green - scarce color for these
37. Peacock at the Fountain ruffled fruit bowl - blue - pretty
38. Peacock at the Fountain ruffled fruit bowl - marigold - nice
39. Dragon & Lotus IC shaped bowl - amber - nice example
40. **M'burg Seacoast pin tray - green - very nice, hard to find perfect**
41. **M'burg Seacoast pin tray - amethyst - very nice, hard to find perfect**
42. Dugan Cherries 10" ruffled bowl - peach opal
43. **M'burg Wild Rose sewing lamp - amethyst - 10 1/4" tall, 7" base, very rare lamp, open bubble on base which cannot be seen from the top**
44. Lattice & Points 7 1/2" vase - purple
45. Mikado giant ruffled compote - blue - scarce item
46. Mikado giant ruffled compote - marigold - very pretty for a marigold
47. Stippled Three Fruits 9" plate w/ribbed back - blue - scarce, nice
48. Stippled Three Fruits 9" plate w/ribbed back - marigold
49. **Poppy pickle dish - marigold on custard - super rare & this one is a beauty, has unusual 2" crack on seam of bowl**
50. Poppy pickle dish - aqua opal - pastel, nice, couple small nick on base
51. Poppy pickle dish - ice blue - pretty, heat check by seam in base
52. Poppy pickle dish - white - general roughness around collar base
53. Poppy pickle dish - green - pretty
54. Poppy pickle dish - purple - pretty
55. **Field Flower 7 pc. water set - purple - nice, one tumbler has epoxy on base**
56. M'burg Strawberry Wreath ruffled sauce - marigold - radium, super
57. M'burg Nesting Swan ruffled bowl - green - satin
58. M'burg Nesting Swan ruffled bowl - amethyst - satin, irid. spots
59. M'burg Nesting Swan ruffled bowl - marigold - satin, very nice
60. **Broken Arches 8 pc. punch set - purple - super pretty set, quite scarce, bowl is pretty all the way around and inside**
61. Persian Medallion rose bowl - marigold
62. **Hearts & Flowers ruffled compote - ice green - very pretty irid., scarce**
63. **Hearts & Flowers ruffled compote - ice blue - scarce color**
64. **Hearts & Flowers ruffled compote - green - pretty, scarce**
65. Hearts & Flowers ruffled compote - aqua opal - butterscotch
66. Hearts & Flowers ruffled compote - blue - electric highlights
67. Hearts & Flowers ruffled compote - purple - very pretty
68. Hearts & Flowers ruffled compote - marigold - nice
69. **King Spider hatpin - dark - very rare & highly desirable**
70. Flower Arc or Garden Path hatpin - dark
71. Three Hearts hatpin - dark
72. **Strawberry hatpin - amber - scarce & desirable**
73. Bars & Beads hatpin - dark
74. Piazza hatpin - dark
75. Lot of 3 black glass hatpins - non iridized
76. Owl hatpin - blue - non iridized
77. Lions round bowl - marigold
78. **Butterfly & Tulip square bowl - purple - collector's classic, very pretty**
79. Grape & Cable perfume bottle - marigold
80. **Peacocks 9" plate w/ribbed back - ice blue - very pretty plate, scarce color**
81. **Peacocks 9" plate w/plain back - green - scarce**
82. Peacocks 9" plate w/ribbed back - blue - scarce, nice
83. Peacocks 9" plate w/ribbed back - purple - scarce
84. Stippled Peacocks 9" plate w/ribbed back - marigold - nice
85. Peacocks 9" plate w/ribbed back - ice green
86. Peacocks 9" plate w/ribbed back - white
87. Wreathed Cherry water pitcher w/1 tumbler - purple - scarce
88. Sowerby cvd hen on nest - blue - couple small nicks under rim of top
89. **Sowerby cvd hen - marigold - has original Sowerby label, very cool**
90. **Brazier's Candies handgrip advertising plate - amethyst - scarce**
91. Brocaded Acorn 3 pc. console set - ice blue - scarce, nice
- 91a. Aurora Pearls decorated bride's bowl - white - very pretty
92. Orange Tree ruffled fruit bowl - blue - nice
93. Orange Tree ruffled fruit bowl - marigold - nice
94. **Poppy Show ruffled bowl - ice blue - scarce, nice**
95. Poppy Show ruffled bowl - white
96. Two Flowers ftd ruffled master bowl - lime green - scarce color
97. Diamond & Sunburst 7 pc. wine set - purple - one wine has small chip on base
98. Brooklyn Bridge 10 ruffled bowl - marigold - very nice example
99. Stippled Three Fruits Medallion spt ftd ruffled bowl - aqua opal - butterscotch, nice
100. M'burg Trout & Fly 3 in 1 edge bowl - amethyst - satin, scarce
101. Four Flowers Variant 9" plate - green - super pretty
102. Daisy & Drape flared out vase - aqua opal - always in demand
103. Captive Rose 9" plate - blue - shallow chip on base
104. Grape & Cable candlesticks - marigold - matching pair
105. **Lattice & Poinsettia ftd ruffled bowl - blue - scarce, nice**
106. **Lattice & Poinsettia ftd ruffled bowl - marigold - nice**
107. **Grape & Cable midsize 17 pc. punch set - marigold - would call this pastel marigold, the cups even match, super pretty**
108. Grape & Cable small size 10 pc. punch set - purple - pretty set
109. Little Barrel - marigold
110. Four Flowers Variant low ruffled bowl - purple - pretty, scarce
111. **Tree Trunk midsize 13" vase w/plunger base - marigold - always hard to find w/the plunger base**
112. Fenton's Peacock at Urn IC shaped bowl - blue
113. Fenton's Peacock at Urn IC shaped bowl - marigold
114. **Fluffy Peacock water pitcher w/1 tumbler - green - pretty pitcher**
115. Estate perfume - smoke - scarce
116. Four Flowers Variant 11" ruffled bowl - purple - rare larger size, pretty
117. Butterfly & Berry hatpin holder - marigold - tiny chip on side of claw on one foot
118. Butterfly & Berry hatpin holder - blue - fantastic irid., one foot has been polished
119. Embroidered Mums ruffled bowl w/ribbed back - marigold
120. **M'burg Wild Rose lamp - green - 11" tall, 6 1/2" base, extremely rare & nice**
121. Panther 5 pc. round berry set - marigold
122. Peacocks PCE bowl w/ribbed back - green - nice
123. **Poppy Show vase - marigold - very pretty, may have a slight blue tint to base**
124. Thistle banana boat - blue - pretty
125. Buzz Saw small size cruet - green - chip on top of stopper
126. Heavy Grape master berry bowl - purple - pretty
127. **Dragon & Strawberry IC shaped bowl - marigold - scarce**
- 127a. Imperial Grape 11" ruffled bowl - purple - very pretty

128. Diamond Lace 7 pc. water set - purple - pretty set
129. Little Fishes IC shaped ftd bowl - marigold
130. Good Luck ruffled bowl w/ribbed back - purple
131. Good Luck ruffled bowl w/BW back - green - chip on point
132. **Tree Trunk 10" vase - aqua opal - very scarce & highly desirable, nice**
133. Peacock & Grape spt ftd 9" plate - green - hard to find, chip in pattern
134. Orange Tree loving cup - blue - nice
135. Orange Tree loving cup - marigold
136. Butterfly & Fern water pitcher - amethyst
137. Butterfly & Fern 4 pc. water set - marigold
138. **N's Corn vase w/plain base - marigold - always in demand**
139. **N's Corn vase w/plain vase - green - scarce color**
140. N's Corn vase w/plain base - purple - base has been repaired
141. N's Corn vase w/plain base - white
142. N's Corn vase w/stalk base - ice green
143. Peacock at the Fountain master berry bowl - purple
144. Vintage lg size epergne - green - scarce
145. Vintage small size epergne - green
146. Victorian ruffled bowl - purple - scarce
147. **Coral 9" plate - marigold - very nice for these - rare plate**
148. M'burg Holly Sprig deep crimped edge 6" bowl - green - radium, very nice
149. Panther ruffled master berry bowl - blue - nice
150. Drapery 7 1/2" vase - ice green
151. Drapery 7" vase - marigold - chips on feet
152. **Fuchsia Basket hatpin - blue - rare**
153. Flying Bat hatpin - dark
154. Plumes & Buckle hatpin - dark - pin attached with a piece of rubber
155. Hearts & Cross hatpin - dark
156. Sun's Up hatpin - lavender
157. Banded Criss Cross hatpin - dark
158. Spider hatpins (2) - lavender & amber - non iridized
159. Lot of 3 hatpins - 2 are not iridized, 1 has light irid w/epoxy on edge
160. Ten Mums CRE bowl - blue - has an irid. spot
161. **Zippered Loop 11" kerosene lamp - marigold - 6 1/4" base, nice**
162. M'burg Boutonniere ruffled compote - green - radium
163. **Acorn Burrs 7 pc. water set - purple - always in demand**
164. **Acorn Burrs 4 pc. table set - purple**
165. Fisherman's mug - peach opal - rare color
166. Fisherman's mug - marigold - super pretty
167. Stag & Holly lg size ftd IC shaped bowl - blue
168. Dragon & Lotus spt ftd IC shaped bowl lime green opal - scarce & very nice, nick on cleats
169. Strawberry 9" plate w/BW back - green - pretty
170. **Australian Thunderbird lg size ruffled bowl - dark**
171. Hearts & Flowers ruffled bowl w/ribbed back - ice blue - nice
172. Corn bottle - smoke - nice example
173. Corn bottle - marigold - dark, pretty
174. Corn bottle - green - tiny pinpoint on top edge
175. Acanthus deep round bowl - purple - super - couple tiny pinpoints around edge
176. Rose Show ruffled bowl - aqua opal - pastel w/nice opal, pretty, epoxy on rose
177. Enameled Radiance syrup - clear w/light irid.
178. Grape & Cable banana boat - purple
179. **Zippered Loop 8" kerosene lamp - smoke - 4 3/4" base**
180. **Zippered Loop 8" kerosene lamp - marigold - 4 3/4" base**
181. Scroll Embossed 9" plate - purple
182. Old Rose Distilling / Grape & Cable Variant 9" plate w/ribbed back - green
183. Diamond Point 7 1/3" squatty vase - marigold - has crack \ around base
184. Paneled Dandelion tankard water pitcher - amethyst - bottom point filled with epoxy
185. Paneled Dandelion 5 pc. water set - blue - silvery
186. Concord 3 in 1 edge bowl - marigold
187. Drapery rose bowl - purple - nice
188. M'burg Peacock at Urn master IC shaped bowl - marigold - satin, nice
189. Australian Kingfisher lg ruffled bowl - marigold - base has been buffed down
190. Ribbon Tie low 3 in 1 edge bowl - blue
191. Horse Medallion ftd nut bowl - blue
192. **Formal hatpin holder - purple - very scarce item**
193. **Formal hatpin holder - marigold - light on irid.**
194. **Orange Tree 8 pc. ruffled punch set - white - scarce set**
195. Orange Tree 9 pc. round punch set - blue
196. Orange Tree 9" plate - blue
197. **Peacocks ruffled bowl w/rib back- aqua opal- pastel, nice**
198. Peacocks ruffled bowl w/ribbed back - purple - minor pinpoint between points
199. **Fashion water pitcher - purple - rare color**
200. Dragon & Lotus ruffled bowl - peach opal - very pretty, scarce
201. **Fern Brand Chocolates handgrip advertising plate - purple - always desirable**
202. N's Peacock at the Fountain water pitcher & 1 tumbler - marigold
203. Dugan's Peacock at the Fountain water pitcher - purple
204. Dugan's Peacock at the Fountain 7 pc. water set - blue
- 204a. **M'burg Trout & Fly IC form bowl - green - rad., nice**
205. M'burg Trout & Fly IC shaped bowl - marigold - wear on trout's mouth
206. Wishbone 10" PCE bowl w/BW back - purple
207. Mayflower lamp shade on electric base - smoke - pretty irid.
208. Fenton's Grape & Cable ruffled fruit bowl - green - Persian Medallion interior
209. Scroll Embossed 7" ruffled bowl w/plain back - purple - pretty
210. **M'burg Wild Rose 10 1/4" lamp - marigold - 6 1/4" base, great piece**
211. Imperial Grape water pitcher - violet blue - very scarce color
212. **Grape & Cable pin tray - green - scarce color, manufacture spot on edge**
213. **Grape & Cable pin tray - purple**
214. **Grape & Cable pin tray - marigold**
215. Plaid ruffled bowl - blue - scarce, nice
216. Scale Band 5 pc. water set - marigold - very scarce set, pinpoint on top edge of pitcher
217. Floral & Optic ftd deep round bowl - red - stretch
218. Little Fishes deep round ftd master bowl - blue
219. Little Fishes deep round ftd master bowl - marigold
- 219a. **Lotus & Grape 9" plate - ameth. - pretty, rare Fenton plate**
- 219b. **Lotus & Grape 9" plate - green - scarce, very pretty**
220. Rambler Rose 6 pc. water set - blue
221. **Orange Tree hatpin holder - amethyst - extremely rare color for these**
222. Orange Tree hatpin holder - green - pretty, chip on top of foot
223. Orange Tree hatpin holder - blue
224. Orange Tree hatpin holder - marigold
225. **Scarab Shell hatpin - amethyst - scarce, nick on edge**
226. Border Path hatpin - dark - yellow type irid.
227. **Four Leaf Clover & Jewel hatpin - dark - nice**
228. Faceted Dome hatpin - dark
229. Top of the Morning - dark
230. **Star of David & Baguettes hatpin - dark - scarce**
231. Diamond Sphere hatpin - dark
232. Rooster hatpins - green & blue
233. M'burg Many Stars ruff. bowl - amethyst - radium, 6 point star
234. **Unusual compote or sherbet - green - pretty sure it is old, US Glass?, don't have a name, have not seen this before, pretty neat piece! chip on base**
235. **Dandelion tankard water pitcher & 1 tumbler - marigold-dark & nice**
236. Imperial Grape water carafe - purple
237. Beaded Cable rose bowl - blue
238. **Loganberry vase - marigold - nice**

239. Grape & Cable butter dish - purple
 240. Soda Gold water pitcher & 1 tumbler - clambroth
 241. Fenton's Peacock at Urn ruffled bowl - blue
 242. M'burg Peacock at Urn Shotgun 3 in 1 edge 7" bowl - amethyst - radium, scarce
 243. Chrysanthemum lg size ftd IC shaped bowl - marigold - pretty
 244. Imperial Grape 7 pc. wine set - purple - nice
 245. M'burg Fleur de Lis 3 in 1 edge dome ftd bowl - marigold - satin, typical chip on saw tooth edge of base
 246. Tree Trunk 13" midsize vase - purple
 247. Leaf Chain 7" plate - white - pretty
 248. Floral & Grape 6 pc. water set - ameth. - 3 tumblers have chips
 249. Thumbprint & Ovals vase - marigold - bruise in center of base
250. N's Town Pump - purple - collector's favorite
 251. Sunflower spt ftd ruffled bowl - green - has stretchy type irid.
 252. Ripple 10 1/2" vase - aqua teal - 2 7/8" base
 253. M'burg Sunflower pin tray - amethyst - very nice example, small nick on back of one flower petal
254. M'burg Sunflower pin tray - green - very scarce to find perfect
 255. M'burg Hanging Cherries water pitcher - amethyst - satin & nice, has 3" crack at bottom of handle
 256. M'burg Leaf & Little Flowers compote - amethyst - radium
 257. Good Luck PCE bowl w/ribbed back - marigold
 258. Ripple 9" vase - purple - nice - 3 3/8" base
259. Lacy Dewdrop water pitcher - iridized milk glass - very scarce
 260. Grape & Cable sweetmeat - purple
 260a. Stretch Glass 5" cupped in small bowl - wisteria - a cutie
 261. Zippered Loop 8" kerosene lamp - smoke - 4 1/4" base
 262. Singing Birds mug - aqua opal - butterscotch, chip on base
 263. Horse Medallion 7" ruffled bowl - blue
 264. Blossomtime ruffled compote - purple
 265. Lustre Rose 9" ruffled bowl - purple - pretty
266. Banded Grape & Cable hatpin holder - marigold - dark & nice, not many banded ones around
 267. Grape & Cable cologne bottle - marigold - pretty
268. Grape & Cable dresser tray - marigold - nice
 269. Grape & Cable powder jar - marigold - base is stippled, lid is not, lid has minor nick
 270. Wishbone 4 pc. water set - green - scarce, crack around handle of pitcher
 271. Grape & Cable candle lamp - purple - scarce
 272. Freefold 11" vase - purple - nice
 273. M'burg Peacock berry sauce - amethyst - radium
274. Near Cut cologne bottle - green - very scarce & very nice!
 275. Grape & Cable 7 pc. water set - purple
 276. Phoenix Consolidated 16" mermaid lamp shade - has some minor nicking around edges, rare shade
277. M'burg Wild Rose 9 1/4" lamp - green - 5 7/8" base, very pretty lamp, rare
 278. Round Up low ruffled bowl - white - pretty
279. Homestead chop plate - purple - very scarce, nice, if extremely fussy, has tiny pinpoint on rim of Greek Key border
280. Acorn Burrs 8 pc. punch set - green - scarce set, always desirable, one punch cup has chip, small open bubble on bottom of base

◆◆◆ Saturday, March 23 ◆◆◆

1. Grape & Cable 6" plate - purple
 2. Four Flowers 6" plate - peach opal
 3. Leaf & Beads rose bowl - aqua opal - pastel & pretty
 4. M'burg Blackberry Wreath 3 in 1 edge sauce - green - radium
 5. Blackberry Open Edge ruffled basket - aqua
6. Tree Trunk 12 1/2" midsize vase - ice blue - super example
 7. M'burg Little Stars 7" ruffled bowl - amethyst - satin
 8. Fashion 7 pc water set - marigold
9. Stippled Three Fruits ruffled bowl w/ribbed back - ice blue - very rare bowl
10. Stippled Three Fruits ruffled bowl w/ribbed back - sapphire - super pretty for this rare bowl
11. Stippled Three Fruits ruffled bowl w/ribbed back - aqua opal - very nice
 12. M'burg Blackberry Wreath 7" 3 in 1 edge bowl - amethyst - radium
13. Dragon & Lotus 3 in 1 edge bowl - peach opal - outstanding!
 14. Dragon & Lotus 3 in 1 edge bowl - green - beautiful
 15. Beaded Cable rose bowl - ice green - very scarce color, one foot has been slightly buffed
16. Beaded Cable rose bowl - ice blue - nice
 17. Beaded Cable rose bowl - white
 18. Beaded Cable rose bowl - aqua opal - nice
 19. Beaded Cable rose bowl - green - pretty
 20. Beaded Cable rose bowl - blue - nice
 21. Beaded Cable rose bowl - purple - one small flake on side of foot
 22. Beaded Cable rose bowl - marigold
23. Farmyard 8 ruffled bowl - purple - nice example, highly desirable, very tiny pinpoint on one point
 24. Rustic 6 1/2" squatty vase - white
25. Rose Show ruffled bowl - green - scarce color
 26. Rose Show ruffled bowl - ice blue - pretty - chip on flat of base
27. Rose Show ruffled bowl - aqua opal - nice
 28. Rose Show ruffled bowl - marigold - nice, small chip on base at seam
 29. Ten Mums ruffled bowl - green
 30. Ten Mums ruffled bowl - blue
31. Broken Arches 11 pc. punch set - purple - very pretty set, inside of bowl is wonderful
 32. Nautilus whimsey creamer - peach opal
 33. Hearts & Flowers ruffled bowl w/ribbed back - aqua - small chip on point
 34. Hearts & Flowers ruffled bowl w/ribbed back - ice green
35. Octagon 4 1/2" deep berry bowls (2) - purple - light lavender color, super cute little bowls & gorgeous
 36. M'burg Primrose ruffled bowl - green - satin, nice
 37. M'burg Primrose ruffled bowl - marigold - radium, nice
38. Grape & Cable small size ruffled fruit bowl - ice green - pretty example, scarce
 39. Grape & Cable small size ruffled fruit bowl - blue - scarce color, very nice
 40. Leaf Swirl ruffled compote - amber
 41. Leaf Swirl ruffled compote - teal
42. Concord 3 in 1 edge bowl - green - super pretty
43. Hearts & Flowers PCE bowl w/ribbed back - blue - very pretty example, quite hard to find
44. Hearts & Flowers PCE bowl w/ribbed back - marigold - very nice
 45. Fenton's Peacock at Urn 3 in 1 edge bowl - green
 46. Lattice & Grape tankard water pitcher w/1 tumbler - marigold
 47. Open Rose 9" plate - amber - pretty
 48. Open Rose 9" plate - green
 49. Open Rose 9" plate - marigold
 50. Butterfly bonbon w/threaded back - purple - nice
51. M'burg Whirling Leaves ruffled bowl - vaseline - very rare color, radium & nice
 52. Soutache dome ftd crimped edge plate - peach opal - does turn up just a bit
 53. Horse Medallion rose bowl - blue
54. Hearts & Flowers ruffled compote - ice green - pretty
55. Hearts & Flowers ruffled compote - ice blue - light color
56. Hearts & Flowers ruffled compote - aqua opal - butterscotch, nice
 57. Hearts & Flowers ruffled compote - white - nice
 58. Holly 9" plate - green - very flat
59. Holly 9" plate - amethyst - pretty irid.

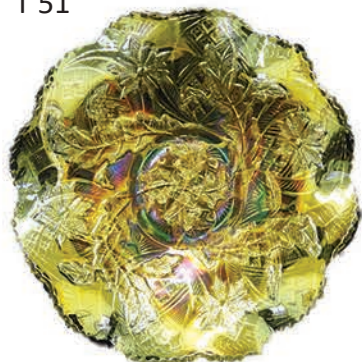
60. Holly 9" plate - blue - pretty
61. Holly 9" plate - marigold
62. Holly 9" plate - white - pretty irid.
63. Open Rose 8" ruffled bowl - purple - pretty
64. Open Rose 8" ruffled bowl - amber - pretty
65. M'burg Blackberry Wreath crimped edge sauce - marigold - radium
66. **N's Stippled Peacock at Urn master IC bowl - blue - a beauty**
67. M'burg Grape Wreath Variant 8" 3 in edge bowl - marigold - radium, pretty
68. Stippled Grape & Cable Variant ruffled bowl w/ribbed back - sapphire - very nice
69. Daisy & Plume ftd rose bowl w/Raspberry interior - purple - chip on side of foot that is iridized over, tiny nick on one toe
70. Daisy & Plume ftd rose bowl w/Raspberry interior - marigold - dark, nice
71. **Dandelion mug - aqua opal - butterscotch, nice**
72. Fenton's Peacock at Urn 9" plate - blue
73. **Fenton's Peacock at Urn 9" plate - marigold - dark, nice**
74. Fenton's Peacock at Urn 9" plate - white
75. M'burg Grape Wreath 7" ruffled bowl - green - radium, pretty
76. N's Peacock at the Fountain 7 pc. water set - blue - nice
77. Leaf & Beads rose bowl - aqua opal - butterscotch
78. Leaf & Beads rose bowl - green - nice
79. Leaf & Beads rose bowl - blue
80. Leaf & Beads rose bowl - purple
81. Leaf & Beads rose bowl - marigold - Sunflower interior
82. **M'burg Peacock at Urn giant compote - amethyst - satin & super nice, this is a great example**
83. Ten Mums 3 in 1 edge ftd bowl - marigold - pretty, rare ftd version
84. Fine Cut & Roses rose bowl w/no collar base - ameth. - scarce
85. Fine Cut & Roses rose bowl - ice blue - nice
86. Fine Cut & Roses rose bowl - green - super pretty example
87. Fine Cut & Roses rose bowl - marigold
88. **Rose Show Variant 9" plate - marigold - very scarce & pretty, very slight polishing on one point**
89. Persian Garden 6" plate - white - nice
90. N's Bushel Basket - aqua opal - butterscotch
91. N's Bushel Basket - ice green
92. N's Bushel Basket - smokey lavender
93. Poppy Show 9" plate - blue - scarce, polished spot between points
94. **Poppy Show 9" plate - marigold - very dark & pretty**
95. Basketweave Open Edge 2 sides up basket - red
96. Basketweave Open Edge 2 sides up basket - lime green
97. **Fruits & Flowers bonbon - ice blue - nice**
98. Fruits & Flowers bonbon - blue - pretty
99. **Peacock & Grape ruffled bowl - peach opal - super nice example**
100. Ribbon Tie 3 in 1 edge low bowl - blue
101. **Drapery rose bowl - aqua opal - pastel, nice**
102. **Grape & Cable 10 pc. master punch set - purple - rare set & desirable, couple of chips on base of bowl**
103. **Grape & Cable 11 pc. master punch set - marigold - pretty, scarce**
104. Persian Medallion bonbon - red - nice
105. Persian Medallion bonbon - lime green
106. **Wishbone ftd ruffled bowl - ice blue - scarce, nice**
107. Wishbone ftd ruffled deep bowl - purple
108. Wishbone ftd ruffled bowl - marigold - nice
109. Grape & Cable banana boat - green - scarce
110. Orange Tree IC shaped bowl - blue
111. Orange Tree w/trunk IC shaped bowl - marigold
112. **M'burg Trout & Fly square shaped bowl - amethyst - satin, very rare bowl & nice**
113. M'burg Hanging Cherries 7" IC shaped bowl - green - satin
114. **Lotus & Grape 9" plate - marigold - scarce color for these, highly desirable**
115. Orange Tree standard size mug - red
116. Orange Tree standard size mug - vaseline - pretty dark marigold overlay
117. Orange Tree standard size mug - lime green
118. Orange Tree standard size mugs - blue & marigold AND Orange Tree wine - marigold
119. **Stippled Grape & Cable Variant 9" plate w/ribbed back - blue - scarce item**
120. Luster Rose 5 pc. water set - clambroth
121. **Peacock at the Fountain ruffled ftd fruit bowl - blue - nice, always in demand**
122. Basketweave Open Edge ruffled basket - red
123. Basketweave Open Edge ruffled basket - aqua
124. Good Luck ruffled bowl w/ribbed back - green - nice
125. Good Luck ruffled bowl w/ribbed back - purple
126. M'burg Fleur de Lis tri-cornered crimped edge dome ftd bowl - marigold - radium, scarce, couple chips on saw tooth base
127. M'burg Fleur de Lis 3 in 1 edge dome ftd bowl - amethyst - radium
128. Windflower ruffled bowl - marigold
129. **Round Up 9" plate - blue - very nice**
130. **Prayer Rug bonbon - marigold on custard - great example for these**
131. Carnival Hobstar spooner - amethyst
132. M'burg Seaweed 3 in 1 edge 10" bowl - marigold - satin, nice
133. Three Fruits 9" plate w/plain back - purple - super
134. **Loganberry vase - amber - scarce**
135. Persian Medallion hair receiver - marigold
136. **Pony 10 ruffled bowl - ice green - rare color, nice bowl**
137. Grapevine Lattice 7" plate - purple
138. Daisy & Drape flared vase - blue - tiny nick on top of one foot
139. Daisy & Drape flared out vase - aqua opal - nice
140. Strawberry bonbon - vaseline
141. Greek Key PCE bowl w/BW back - green - nice
142. Round Up IC shaped bowl - peach opal
143. Round Up IC shaped bowl - white - nice irid.
144. **Holly ruffled bowl - red - very pretty example, cherry red color**
145. Horse Medallion JIP ftd bowl - marigold
146. Stag & Holly lg size ftd ruffled bowl - blue - nice
147. **Poppy Show ruffled bowl - ice blue - scarce, nice**
148. **Poppy Show ruffled bowl - blue - has electric highlights, scarce color**
149. Poppy Show ruffled bowl - purple - scarce
150. Enameled Single Flower 9" ruffled bowl - peach opal
151. Enameled Cherries & Little Flowers 7 pc. water set - blue
152. Orange Tree 9" plate - marigold
153. Orange Tree w/trunk 9" plate - white
154. **Stippled Peacocks 9" plate w/ribbed back - blue - scarce**
155. **Persian Garden lg size IC shaped bowl - purple - very scarce bowl, highly desirable**
156. Pond Lily bonbon - marigold
157. Peacock at the Fountain spooner - marigold
158. Vintage 7" plate - green
159. Ski Star lg size ruffled bowl - peach opal
160. Scroll Embossed 9" plate - purple - nice
161. **Stippled Three Fruits 9" plate w/ribbed back - marigold - nice**
162. **Peacocks ruffled bowl w/ribbed back - aqua opal - pastel & beautiful**
163. Peacocks ruffled bowl w/ribbed back - purple - nice
164. Grapevine Lattice 7" ruffled bowl - white
165. **Coin Spot ruffled compote - celeste blue - very scarce, nice**
166. Orange Tree loving cup - marigold - nice
167. M'burg Nesting Swan ruffled bowl - green - satin, tiny pinpoint on top edge of ruffle
168. **Leaf Chain 9" plate - marigold - pretty**
169. Leaf Chain 9" plate - white
170. Two Flowers spt ftd rose bowl - marigold - one cleat has chip

171. Strawberry 9" plate w/BW back - purple
172. Strawberry 9" plate w/BW back - marigold
173. **Raspberry milk pitcher - green - nice**
174. Carolina Dogwood ruffled bowl - marigold on moonstone
175. **Wreath of Roses 11 pc. punch set – blue - has plain interior, 7 cups have Vintage interior, 2 cups have Persian Medallion interior**
176. N's Eight Sided Bushel Basket - white
177. N's Eight Sided Bushel Basket - marigold - nice
178. **M'burg Vintage 10" IC shaped bowl w/Hobnail back - green - satin & pretty, has heat check in collar base**
179. M'burg Blackberry Wreath deep round sauce - marigold - radium, nice
180. **Fern Brand Chocolates 2 sides up advertising plate - amethyst - nice example**
181. Beaded Cable rose bowl w/Rayed interior - green
182. Beaded Cable rose bowl w/Rayed interior - purple
183. **Cosmos & Cane 7" ruffled bowl - marigold - neat piece**
184. **Cosmos & Cane 7" ruffled bowl w/Headdress interior - honey amber - nice**
185. **Cosmos & Cane 7" ruffled bowl w/Headdress interior - white - nice**
186. Good Luck PCE bowl w/ribbed back - blue - electric highlights
187. Good Luck PCE bowl w/ribbed back - purple
188. Good Luck PCE bowl w/ribbed back - marigold
189. Grape & Cable 9" plate w/plain back - purple
190. Grape & Cable 9" plate w/BW back - marigold
191. M'burg Hanging Cherries 10" IC shaped bowl - green - satin
192. Pair of Ripple 10" & 7 1/2" vases - amber - 2 3/4" bases
193. Lot of 3 Ripple 10 1/2", 9 1/2" & 6" vases - marigold - 2 3/4" bases
194. **Stippled Strawberry 9" plate w/ribbed back - purple**
195. Heavy Grape 8" plate - marigold - nice
196. Fenton's Peacock at Urn ruffled bowl - amethyst - scarce color
197. **Dandelion tankard water pitcher & 1 tumbler - marigold - nice, dark from top to bottom**
198. Puzzle bonbon - white
199. Three Fruits Medallion spt ftd ruffled bowl - purple
200. **Dragon & Lotus ruffled bowl - peach opal - scarce, nice**
201. Lotus & Grape card tray shaped bonbon - blue
202. Nippon PCE bowl w/ribbed back - ice blue
203. Beaded Bullseye 11 1/2" vase - marigold
204. **Tornado lg size vase - green - scarce, nice**
205. M'burg Blackberry Wreath 7" IC shaped bowl - marigold - satin
206. M'burg Leaf & Little Flowers goblet shaped compote - green - satin, scarce
207. M'burg Leaf & Little Flowers goblet shaped compote - marigold - radium, nice
208. **Peacocks 9" plate w/ribbed back - purple - nice**
209. Peacocks 9" plate w/ribbed back - marigold - nice
210. **Peacocks 9" plate w/ribbed back - lime green - hard to find color**
211. Grape Delight nut bowl - lavender
212. Grape Delight nut bowl - marigold
213. M'burg Peacock at Urn Mystery 3 in 1 edge bowl - amethyst - radium, couple of irid. spots in center
214. Grape & Cable ftd ruffled fruit bowl w/Persian Medallion interior - marigold - nice
215. Fenton's Peacock at Urn ruffled bowl - blue - nice
216. Leaf & Beads rose bowl - aqua opal
217. **Wishbone & Spades 10" ruffled bowl - peach opal - scarce, nice**
218. Coin Dot lg size rose bowl - green
219. Orange Tree shaving mug - marigold
220. Fenton's Fine Rib 8 1/2" vase - red
221. **Dragon & Strawberry ftd ruffled bowl - marigold - scarce pattern & very nice!**
222. Dragon & Lotus IC shaped bowl - powder blue - scarce color
223. Plaid ruffled bowl - marigold
224. Grape & Cable PCE bowl w/BW back - green
225. Acanthus chop plate - marigold
226. **M'burg Peacock 10" ruffled bowl – amethyst - radium, nice**
227. Four Seventy Four water pitcher - marigold
228. Pinecone saucer shaped 6" plate – green
229. Drapery 8" vase - sapphire - rare, nice
230. Captive Rose 9" plate - blue - small pinpoint on back of one point
231. Grape & Cable hatpin holder - marigold
232. Strawberry ruffled bowl w/plain back - purple
233. Fanciful ruffled bowl - white
234. **M'burg Many Stars ruffled bowl - amethyst - 6 point star, scarce**
235. Curled Rib 8" JIP vase - marigold
236. **Peacock at the Fountain 8 pc. punch set– marigold- nice set**
237. Fenton's Three Fruits 12 sided plate - blue
238. **N's Peacock at Urn master IC bowl - ice green - always in demand**
239. **N's Peacock at Urn master IC bowl - ice blue - pretty**
240. N's Stippled Peacock at Urn master IC bowl - custard - not Carnival Glass
241. Three Fruits ruffled bowl w/plain back - green - pretty
242. Kittens cup & saucer - marigold
243. Grape & Cable 6" handgrip plate - purple
244. **Fenton's Peacock at Urn IC shaped bowl - marigold on moonstone - very rare & a nice example**
245. Tree Trunk 7" squatty vase - green
246. M'burg Blackberry Wreath 10" ruffled bowl - marigold - satin
247. M'burg Holly Sprig 8" crimped edge ruffled bowl - amethyst - radium
248. **Hearts & Flowers 9" plate - marigold - super nice**
249. Louisa rose bowl - light green
250. Daisy & Drape turned in vase - marigold
251. Daisy & Drape turned in vase - white
252. Heavy Grape chop plate - marigold
253. M'burg Holly Sprig tri-cornered 8" bowl - amethyst - radium - scarce shape
254. Stag & Holly lg size ftd IC shaped bowl - marigold
255. Holly square shaped hat - powder blue
256. Peacocks PCE bowl w/ribbed back - marigold
257. Rose Spray goblet shaped compote - celeste blue
258. Leaf Chain 7" plate - marigold
259. **Stippled Grape & Cable PCE bowl w/ribbed back - ice blue - super nice example**
260. Garland rose bowl - marigold - pretty
261. Lattice & Points 7" ruffled bowl - white
262. Lattice & Points 7" ruffled bowl - marigold
263. M'burg Leaf & Little Flowers ruffled compote - amethyst - radium
264. Octagon small size 7 pc. water set - marigold
265. **M'burg Peacock 3 in 1 edge sauce - green - rare sauce**
266. Fantail ftd ruffled bowl - marigold - super pretty
267. M'burg Grape Wreath 3 in 1 edge 7" bowl - amethyst - radium
268. **M'burg Trout & Fly ruffled bowl - green - satin, nice**
269. **M'burg Trout & Fly ruffled bowl – marigold - satin**
270. Double Loop chalice or sugar bowl - blue
271. Butterfly bonbon w/plain back - marigold
272. M'burg Cosmos IC sauce - green - radium
273. Rose Show 9" plate – blue - nice, heat check in collar base, small spot of epoxy on rose
274. Horse Medallion ftd ruffled bowl - green
275. **Persian Medallion 9" plate – marigold - a beautiful one!**
276. April Showers 10" vase - green
277. M'burg Blackberry Wreath ruffled sauce – marigold - radium
278. **Stippled Strawberry ruffled bowl w/ribbed back - lime green - rare color & very pretty**
279. M'burg Hobstar & Feather punch cup - green - tough to find if you need one
280. **Tree Trunk 12 1/2" midsize vase - ice blue - another beauty**

PRESORTED
FIRST CLASS MAIL
US POSTAGE
PAID
COPI

SEEK AUCTIONS
P.O. BOX 377
MASON CITY, IA 50401

T 51



**2019 CARNIVAL
GLASS AUCTION**

ONTARIO, CAL.
MARCH 9
DALLAS, TEXAS
MARCH 23

- ___ 281. Horse Medallion ftd nut bowl – blue - lacks irid. in center
- ___ 282. M’burg Primrose ruffled bowl - green - satin
- ___ 283. M’burg Primrose ruffled bowl - marigold - radium
- ___ 284. Fenton’s Peacock at Urn 9” plate - marigold
- ___ 285. N’s Beaded Cable rose bowl - aqua opal - pastel
- ___ 286. N’s Beaded Cable rose bowl - aqua opal - butterscotch
- ___ 287. N’s Beaded Cable rose bowl - custard - not Carnival Glass
- ___ 288. Stippled Three Fruits 9” plate w/ribbed back - marigold
- ___ 289. Fine Cut & Roses rose bowl – amethyst - has no collar base
- ___ 290. Fine Cut & Roses rose bowl – marigold
- ___ 291. Open Rose 9” plate - amber
- ___ 292. Leaf & Beads rose bowl - aqua opal
- ___ 293. Hearts & Flowers ruffled compote - white
- ___ 294. Four Flowers 6” plate - peach opal
- ___ 295. N’s Bushel Basket - aqua opal - butterscotch, nice
- ___ 296. Persian Medallion bonbon - lime green
- ___ 297. Vintage 7” plate - green
- ___ 298. Drapery rose bowl - aqua opal - butterscotch, nice
- ___ 299. Three Fruits 9” plate w/BW back - marigold
- ___ 300. Basketweave Open Edge 2 sides up basket - lime green
- ___ 301. Dandelion mug - aqua opal - butterscotch, nice
- ___ 302. Pair of Dandelion tumblers - ice blue
- ___ 303. Singing Birds and Raspberry tumblers - marigold
- ___ 304. Lot of 3 tumblers - one contemporary
- ___ 305. Lot of 3 Wreath of Roses punch cups - marigold, amethyst & green
- ___ 306. Lot of 4 pieces - marigold
- ___ 307. Lot of 3 pieces - marigold
- ___ 308. Lot of 5 vases - marigold
- ___ 309. Lot of 2 Northwood pieces
- ___ 310. Lot of 5 Fenton pieces
- ___ 311. Lot of 7 Imp. pieces - marigold
- ___ 312. Lot of 3 pieces
- ___ 313. Lot of 3 pieces
- ___ 314. Orange Tree Loving cups - blue & amethyst - damaged
- ___ 315. Inverted Strawberry powder jar - marigold - both base & lid have nicks
- ___ 316. Pair of Grape & Cable items - green - damaged
- ___ 317. M’burg Primrose ruffled bowl – amethyst - tiny pinpoint on top of point
- ___ 318. M’burg Whirling Leaves ruffled bowl - amethyst - radium, pretty, chip on backside of top edge
- ___ 319. Hearts & Flowers ruffled bowl w/ribbed back - aqua - flake between points
- ___ 320. Cosmos & Cane 10” ruffled bowl - white - heat check in base
- ___ 321. Pair of plates - marigold - both have chips
- ___ 322. Zippered Heart 5 pc. berry set - purple - master has one ruffle repaired
- ___ 323. Embroidered Mums ruffled bowl w/ribbed back - blue - tiny pinpoint on one point
- ___ 324. Imperial Grape wine bottle - marigold - stopper has crack in bottom
- ___ 325. Drapery 7” vase - ice green - chip on foot
- ___ 326. Lot of 3 Fenton pieces - all have damage
- ___ 327. Lot of 3 M’burg pieces - all have damage
- ___ 328. Fashion punch set - marigold - chip on bowl points
- ___ 329. Lot of 4 rose bowls - all have minor damage
- ___ 330. Lot of 9 Imperial pieces - all have damage
- ___ 331. Lot of 3 marigold pieces - all have damage
- ___ 332. Lot of 4 Dugan pieces - all have damage
- ___ 333. Lot of 7 pieces - all have damage
- ___ 334. Pair of Custard pieces - both have damage - not iridized