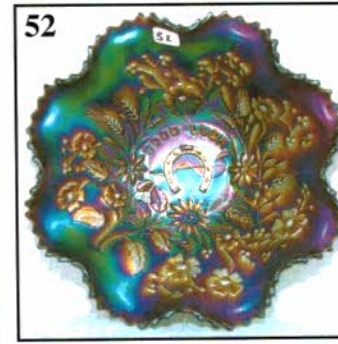
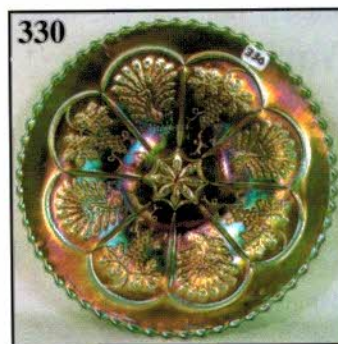
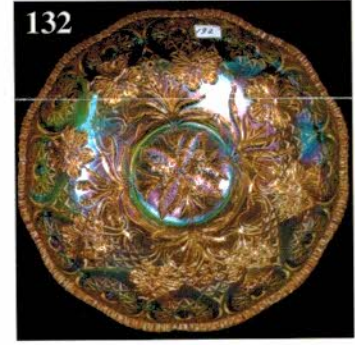
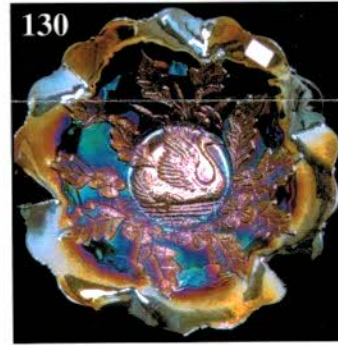
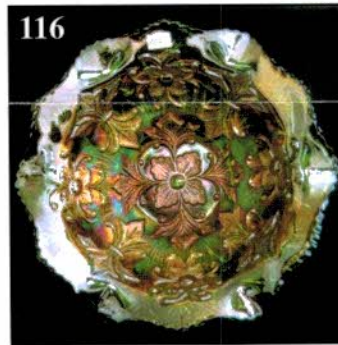
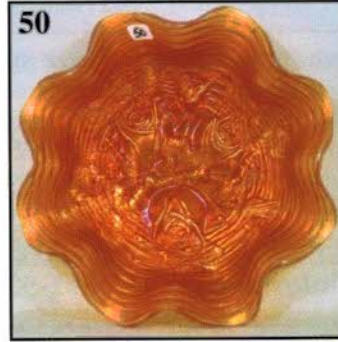


# CARNIVAL GLASS AUCTION

Saturday, November 13, 2004 9:00 a.m. C.S.T.

MICHIGAN AND OKLAHOMA COLLECTION

★ *Something for Everyone* ★



Held By the Mickey Reichel Antique & Auction L.C.

Office: 660-882-5292 • Home: 660-882-5283

👉 **NEW WEB SITE: [www.AWK-SHN.com](http://www.AWK-SHN.com)**

E-mail: [mreichel@AWK-SHN.com](mailto:mreichel@AWK-SHN.com)

# Held Inside the Mickey Reichel Auction Center

1 Mile North of I-70 on Hwy. 5, Exit 101, Boonville, Missouri • 20 Miles West of Columbia, MO on I-70



Preview Friday 12 p.m. - 5 p.m. and 7:30 a.m. - 9:00 a.m. Day of Auction

**TERMS:** Cash or Good Check, VISA and MasterCard accepted.



3% Clerking Fee on all purchases except for payment of cash or check. Proper I.D. required.

**WEB SITE:** [www.AWK-SHN.com](http://www.AWK-SHN.com)

## **ABSENTEE BID POLICY:**

**WRITE IN BIDS:** If you are unable to attend the auction, we will be happy to accept absentee bids which must be received by THURSDAY, NOVEMBER 11, 2004. Don't Delay. E-Mail: [mreichel@AWK.SHN.com](mailto:mreichel@AWK.SHN.com)

**FOR AUCTION PRICE RESULTS:** Send \$3.00 and Large S.A.S.E. to 18350 Hunters Ridge Ct., Boonville, MO 65233-2971

**PLEASE NOTE:** There is a **\$5 handling charge for each successful bid which will be added to the selling price** for all write-in bids. This is in addition to the cost of postage, insurance and packing. Your write-in bid will be entered just as if you are present and bidding. **Successful bidders will be notified in 1 to 3 days by the auctioneer (so be sure to include your phone number).** Direct mail bids to Auctioneer Mickey Reichel, 18350 Hunters Ridge Ct., Boonville, MO 65233-2971. Terms: Cash or Check accepted with proper I.D. and Social Security Number and References. Announcements made day of the auction supercede all printed material. Not Responsible for Accidents or Sold Items.

**No return on any items once they leave the Auction Center (No Exceptions).\*\*\*\***

**Call for additional information: 660-882-5292 days or 660-882-5283 evenings before 9:00 p.m.**

**FAX: 660-882-5292 (evening hours start FAX transmission after beep)**

**MAIL BIDS:** Items are bid on in perfect condition with average or above iridescence OR as listed in the brochures. Bids will not be carried out when damage on an item has been found during the auction.

**PEOPLE PRESENT AT AUCTION ARE RESPONSIBLE FOR FINDING ANY PINHEADS, WEAR, SPOTTINESS, MANUFACTURER'S DEFECTS OR ANY OTHER MINOR FLAWS, ETC. \*\*\*\*\***

**NOTE:** Read each line, as we have accentuated the type of no particular piece, all are special.

**Make Reservations EARLY at one of these local motels:**

Days Inn: 660-882-8624 • Comfort Inn: 660-882-5317 • Super 8: 660-882-2900 • Holiday Inn: 660-882-6882

**Auction Consists of Rarity, Great Irid. and Variety**

### **THANK YOU FOR ATTENDING TODAY**

- |   |  |
|---|--|
| _____ 1. G-Fenton 7 1/2" Diamond Point Columns Vase                           | _____ 12. Outstanding PO-Dugan 10" Pulled Loop Vase                        |
| _____ 2. G-Fenton 10" Rustic Vase—Radium                                      | _____ 13. G-N 8 1/2" Fine Rib Vase—Alaskan Effect                          |
| _____ 3. B-Fenton 10 1/2" April Showers Vase—Plain Int.                       | _____ 14. Lav-N 11 3/4" Tree Trunk Vase—Radium                             |
| _____ 4. G-Fenton 11 1/4" Long Thumbprint Hobnail Vase—<br>Extra nice         | _____ 15. AO-N 10 1/4" Four Pillars Vase—Very desirable                    |
| _____ 5. A-Fenton 10 1/2" Diamond and Rib Tulip Top Vase—<br>Radium           | _____ 16. M-Imp. Ripple 17" Funeral Vase—4" base, 6" opening               |
| _____ 6. G-Fenton 11 1/2" Plume Panels Vase—Scarce and<br>nice                | _____ 17. M-Imp. 11" Beaded Bullseye Vase—5" opening                       |
| _____ 7. A-Fenton 10 1/4" Long Thumbprint Vase                                | _____ 18. Soft P-Imp. 7 1/2" Morning Glory Bud Vase                        |
| _____ 8. M-Fenton 8 3/4" Butterfly and Berry Vase                             | _____ 19. M-Imp. 5" Mini Swirled Morning Glory Vase—4 1/2"<br>flat opening |
| _____ 9. PO-Dugan Pinched Swirl TriCorner Cuspidor-Shaped<br>Vase—4 1/2" Tall | _____ 20. BA-Dugan 9" Lined Lattice Vase—Multi Electric<br>dandy           |
| _____ 10. Great PO-Dugan 10" Target Vase—One of the finest                    | _____ 21. M-Fenton 5 1/2" Bud Vase Whimsey—5 1/2" Square<br>opening        |
| _____ 11. M-Dugan 10" Target Vase—Scarce                                      | _____ 22. Dark B 5 1/2" Bud Vase Whimsey—Two sides<br>up/card tray shape   |
|   | _____ 23. M-Dugan 10" Swung Paneled Vase                                   |
|   | _____ 24. Scarce B-Fenton 14 1/2" Bullseye and Beads radium<br>Vase        |

- \_\_\_\_\_ 25. M-Imp. 6 1/4" Pillar Flute scallop-footed Vase
- \_\_\_\_\_ 26. M-Imp. Grape Wine Decanter w/ Stopper and Five Wines
- \_\_\_\_\_ 27. Radium B-Fenton Orange Tree Hatpin Holder—Top Condition
- \_\_\_\_\_ 28. Red-Fenton 10" Fine Rib Vase-Tulip top
- \_\_\_\_\_ 29. M-Fenton 9 1/2" Fine Rib Vase
- \_\_\_\_\_ 30. Yellow Amber-Fenton 10 1/4" Fine Rib Vase—Unusual! Glows orange!
- \_\_\_\_\_ 31. Lime Vas-Fenton 10 1/4" Fine Rib Vase—Tulip top
- \_\_\_\_\_ 32. True Teal-Fenton 9 3/4" Fine Rib Vase—Glows beautifully—Rare color
- \_\_\_\_\_ 33. M-Dugan 8 3/4" Bud Vase w/ Six Ribs—Base chipped
- \_\_\_\_\_ 34. Dark B-Fenton 11" Rustic Vase
- \_\_\_\_\_ 35. M-Fenton 9 3/4" Rustic Vase
- \_\_\_\_\_ 36. G-Fenton 9 1/2" Rustic Vase
- \_\_\_\_\_ 37. M-Fenton 10 1/2" April Showers Vase
- \_\_\_\_\_ 38. Limeish G-Imp. Lustre Rose 7 pc. Water Set—Exceptionally nice
- \_\_\_\_\_ 39. G-Cambridge Double Star 7 pc. Water Set—Way Above Average—Mkd. Near Cut
- \_\_\_\_\_ 40. Rich M-Imp. Grape Tumblers—2 x \$
- \_\_\_\_\_ 41. M-Floral and Grape Tumbler
- \_\_\_\_\_ 42. Rare B-Fenton Lattice and Grape Tankard Pitcher—A Beauty—Heat check in handle
- \_\_\_\_\_ 43. P-N Raspberry Milk Pitcher—Outstanding example
- \_\_\_\_\_ 44. P-N Raspberry Tumbler—Rib Int.
- \_\_\_\_\_ 45. P-N Grape and Cable tumbler
- \_\_\_\_\_ 46. Radium M-Dugan Rambler Rose 7 pc. Water Set—Quality set
- \_\_\_\_\_ 47. G-N 6", 6 ruffle Smooth Rays bowl
- \_\_\_\_\_ 48. Scarce G-N 7 1/2" Wild Strawberry Handgrip Plate
- \_\_\_\_\_ 49. A-N 8 1/2", ruffled, ftd. Wishbone Bowl—Multi electric
- \_\_\_\_\_ 50. Pumpkin M-N 9" ruffled Rose Show Bowl
- \_\_\_\_\_ 51. A-N 6", 6 ruffle Smooth Rays Bowl
- \_\_\_\_\_ 52. P-N 8 3/4", ruffled Good Luck Bowl—Multi electric
- \_\_\_\_\_ 53. Rich M-N Daisy and Plume Ruffled Compote—Plain Int.
- \_\_\_\_\_ 54. Beautiful P-N Grape and Cable Powder Jar and Lid
- \_\_\_\_\_ 55. G-Fenton 6", 6 ruffle Stippled Rays Compote
- \_\_\_\_\_ 56. A-Fenton 9 1/2", 12-sided Three Fruits Plate—Very nice example
- \_\_\_\_\_ 57. Lovely B-Fenton 8 1/4", ICS Dragon and Lotus Bowl
- \_\_\_\_\_ 58. B-Fenton 9 1/2" Captive Rose Plate—Golds, silvers and pinks
- \_\_\_\_\_ 59. B-Fenton Miniature Blackberry Compote—Good piece
- \_\_\_\_\_ 60. Red-Fenton 6 1/4", 6 ruffle Holly Hat
- \_\_\_\_\_ 61. B-Fenton 7 1/2", 8 ruffle Acorn Bowl—Satin silver irid.
- \_\_\_\_\_ 62. Scarce Dark G-Fenton 7 1/2", 8 ruffle Acorn Bowl
- \_\_\_\_\_ 63. B-Fenton 6 1/4", 12-sided Pine Cone Plate—Pretty
- \_\_\_\_\_ 64. B-Fenton 9 1/2" Orange Tree Plate—Flashy Irid.
- \_\_\_\_\_ 65. Crystal-Imp 8", 8 ruffle Scroll Embossed Bowl—Super pastel irid.
- \_\_\_\_\_ 66. Scarce M-Fenton Spat. ftd. Two Flowers Rosebowl
- \_\_\_\_\_ 67. Rare Teal-Imp. 7 3/4", round Acanthus Bowl—Radium multi-color gem
- \_\_\_\_\_ 68. M-Imp. Fine Cut Flower ruffled Compote

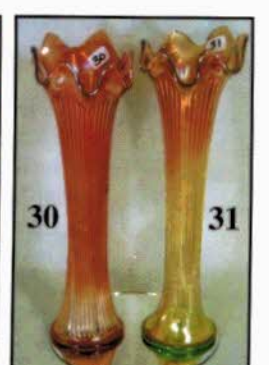
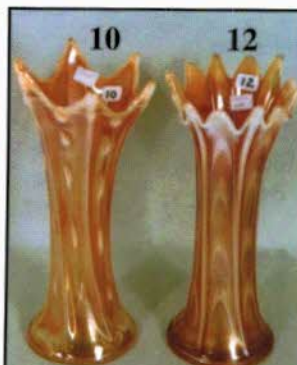
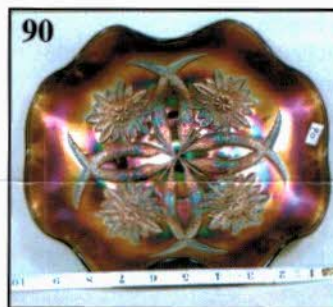
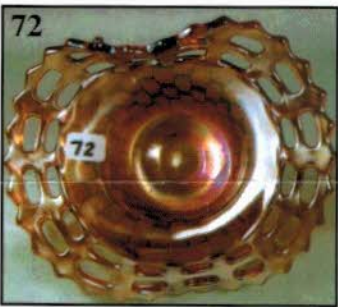
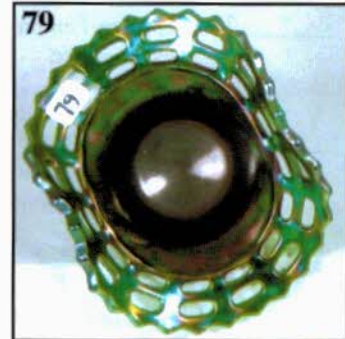
- \_\_\_\_\_ 69. A-Westmoreland 8", 6 ruffle Pearly Dots bowl—Scarce
- \_\_\_\_\_ 70. Electric B-Fenton 9", 3 in 1 Edge, low ruffle Bowl/Plate? Prettiest one I've seen!

### **GREAT LINEUP OF OPEN EDGE BASKETS:**

- \_\_\_\_\_ 71. Unusual G-Fenton 5 3/4", JIP 2-row Open Edge Basket—Glows
- \_\_\_\_\_ 72. Horehound-Fenton 5 3/4", JIP 2-row Open Edge Basket—First I've seen
- \_\_\_\_\_ 73. Unusual G-Fenton 6", JIP 2-row Open Edge Basket—Glows
- \_\_\_\_\_ 74. Sapphire-Fenton 5 1/4", JIP 2-row Open Edge Basket—Nice
- \_\_\_\_\_ 75. M-Fenton 6", 2-sides up Miller's Furniture Adv. 2-row Open Edge Basket
- \_\_\_\_\_ 76. Ice G Vas-Fenton 6 1/4", 2-sides up 2-row Open Edge Basket—Talk about glow!
- \_\_\_\_\_ 77. Powder B-Fenton 6", 2-sides up 2-row Open Edge Basket
- \_\_\_\_\_ 78. W-Fenton 6", 2-sides up 2-row Open Edge Basket
- \_\_\_\_\_ 79. Emerald G-Fenton 5 1/2" 2-sides up 2-row Open Edge Basket—Super!
- \_\_\_\_\_ 80. BA-Fenton 5 1/2" 2-sides up 2-row Open Edge Basket
- \_\_\_\_\_ 81. Deep B-Fenton 5 1/2", 6 ruffle 2-row Open Edge Basket
- \_\_\_\_\_ 82. Dark Ice B-Fenton 5 3/4", 6 ruffle 2-row Open Edge Basket
- \_\_\_\_\_ 83. Yellow Vas-Fenton 5 3/4", 6 ruffle 2-row Open Edge Basket
- \_\_\_\_\_ 84. Red Amberina-Fenton 5 1/4", 6 ruffle 2-row Open Edge Basket
- \_\_\_\_\_ 85. Aqua-Fenton 5 1/2", 6 ruffle 2-row Open Edge Basket
- \_\_\_\_\_ 86. Aqua-Fenton 5 1/4", 6 ruffle 2-row Open Edge Basket
- \_\_\_\_\_ 87. Lav-Fenton 5 1/2", 6 ruffle 2-row Open Edge Basket
- \_\_\_\_\_ 88. Lav Smoke-Fenton 5 1/2", 6 ruffle 2-row Open Edge Basket
- \_\_\_\_\_ 89. Dugan Blue-Flat 8 3/4" Roundup Plate—BW Ext.
- \_\_\_\_\_ 90. P-Dugan 10" Four Flowers ruffled Banana Boat Whimsey—Nice piece
- \_\_\_\_\_ 91. P-Dugan S-Repeat Whimsey Creamer from Punch Cup
- \_\_\_\_\_ 92. P-Dugan 6 3/4" Wishbone and Spaded Plate—Electric tints
- \_\_\_\_\_ 93. Rare Sapphire-Dugan 9", 10 ruffle Double Stem Rose Bowl—A beauty

### **FINE SELECTION OF OUTSTANDING PEACH OPAL PIECES:**

- \_\_\_\_\_ 94. PO-Dugan 9 1/4", 3 in 1 Crimped Double Stem Rose Bowl—2" of opal
- \_\_\_\_\_ 95. PO-Dugan 10 3/4", 6 ruffle Ski Star Bowl
- \_\_\_\_\_ 96. PO-Dugan 8 1/4", Tri-corner Ski Star Bowl
- \_\_\_\_\_ 97. PO-Dugan 9", CRE Caroline Bowl—Smooth Ray Int.
- \_\_\_\_\_ 98. PO-Dugan 8", CRE Caroline Tri-corner Bowl—Smooth Ray Int.—Fantastic
- \_\_\_\_\_ 99. PO-Dugan 6 1/4" Four Flowers Plate—Plain Ext.
- \_\_\_\_\_ 100. Scarce PO-Dugan 11 3/4" Four Flowers Chop Plate—Soda Gold. Ext.—Lots of opal



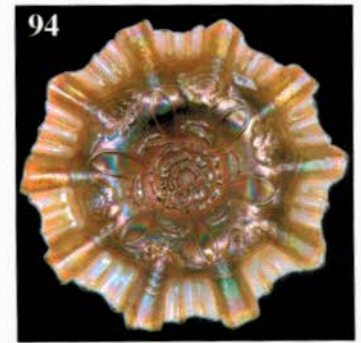
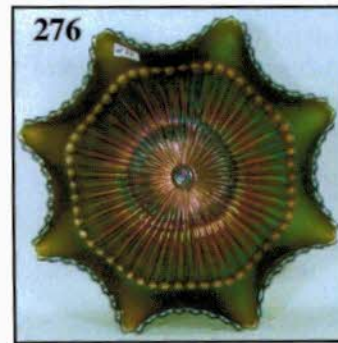
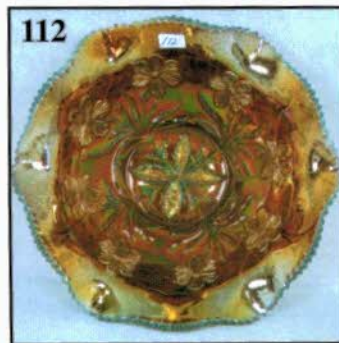
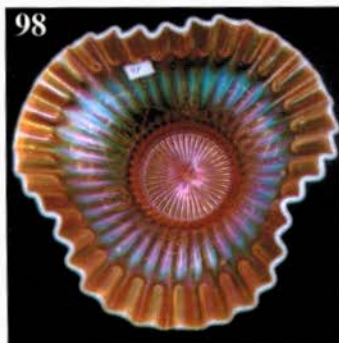
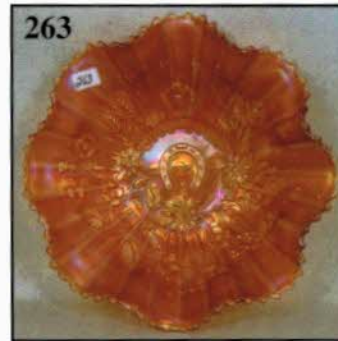
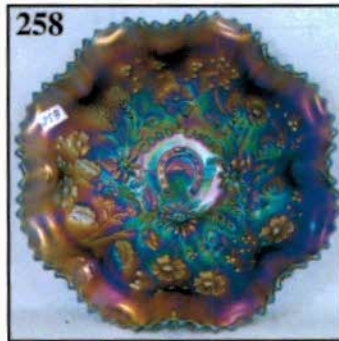
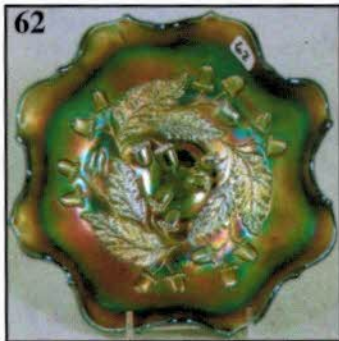
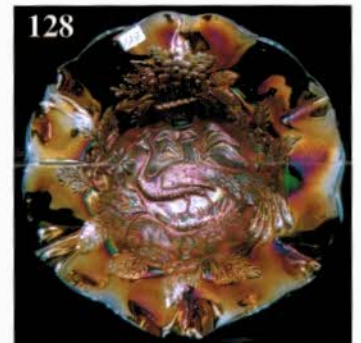
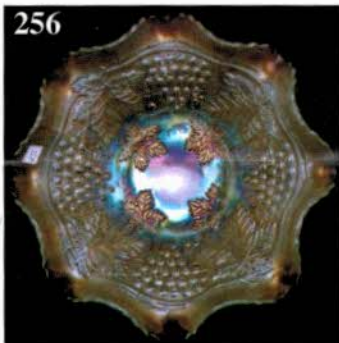
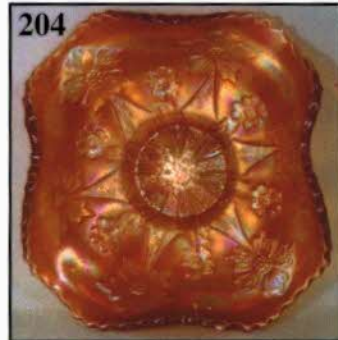
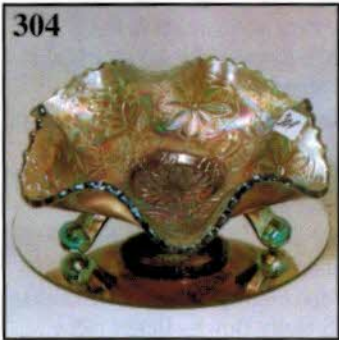
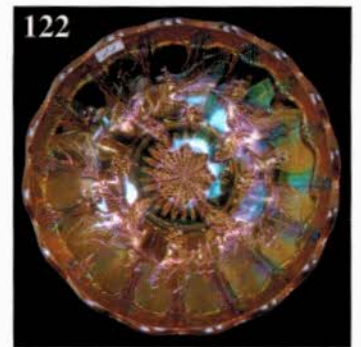
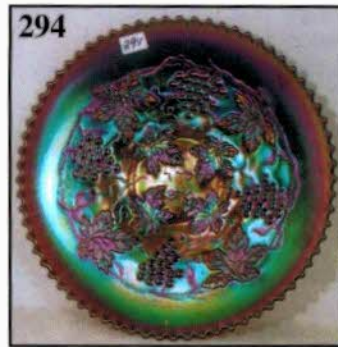
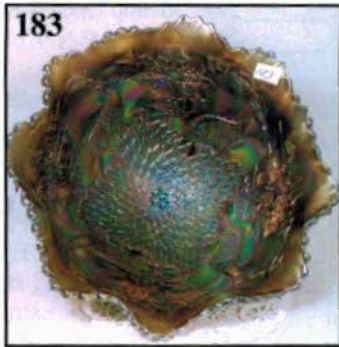
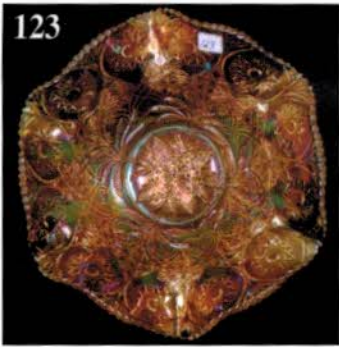
- \_\_\_\_\_ 101. Light PO-Westmoreland 8 1/2", 6 ruffle Scales Bowl
- \_\_\_\_\_ 102. PO-Dugan 7 1/2" Tri-corner Beads and Flowers Plate—Rainbow irid.
- \_\_\_\_\_ 103. PO-Dugan 8 1/2", 6 ruffle Soutache Bowl
- \_\_\_\_\_ 104. PO-Dugan 6 3/4", 10-sided Single Flower Framed Bowl—Smooth Rays Int.
- \_\_\_\_\_ 105. PO-Dugan Ruffled Coin Spot Compote—Great dark example
- \_\_\_\_\_ 106. PO-Dugan 7 1/2", Tri-corner Six Petals Bowl—Also nice
- \_\_\_\_\_ 107. PO-Dugan 8 3/4", 10 ruffle Dogwood Sprays dome-ftd. Bowl
- \_\_\_\_\_ 108. PO-Nutilus Sugar Bowl—Signed Northwood Script
- \_\_\_\_\_ 109. Pastel PO-Dugan 6 1/2, CRE Folding Fan Pedestal Plate—Scarce and nice
- \_\_\_\_\_ 110. M-U.S. Glass 6", 8-scallop Cosmos and Cane Compote—Flake off base

### **LINE UP OF NICE MILLERSBURG PIECES:**

- \_\_\_\_\_ 111. P-Mlbg. 6 3/4", 6 ruffle Peacock Tail Vt. Compote—Satin and nice
- \_\_\_\_\_ 112. A-Mlbg. 9 1/4", 6 ruffle Primrose Bowl—Great radium example
- \_\_\_\_\_ 113. G-Mlbg. 7 1/4", ICS Blackberry Wreath low Bowl
- \_\_\_\_\_ 114. Lav-Mlbg. 7", ICS Hanging Cherries Bowl
- \_\_\_\_\_ 115. G-Mlbg. 10", 6 ruffle Holly Whirl Bowl—Satin finish
- \_\_\_\_\_ 116. Radium G-Mlbg. 10", 6 ruffle, Collar base Fleur De Lis Bowl—Green highlights
- \_\_\_\_\_ 117. G-Mlbg. 6", ICS Cosmos Bowl—Great radium
- \_\_\_\_\_ 118. G-Mlbg. 8", ICS Mayan Bowl—Outstanding radium
- \_\_\_\_\_ 118A. G-Mlbg. Seacoast Pin Tray—Silver and gold irid.
- \_\_\_\_\_ 119. M-Mlbg. 10", 6 ruffle Rosalind Bowl
- \_\_\_\_\_ 120. M-Mlbg. 10", 6 ruffle Holly Whirl Bowl—Satin and nice
- \_\_\_\_\_ 121. G-Mlbg. 10", 6 ruffle Holly Whirl Bowl—Radium
- \_\_\_\_\_ 122. Radium M-Mlbg. 8", ICS Holly Sprig Vt. Bowl—EXTRA Pretty!
- \_\_\_\_\_ 123. M-Mlbg. 9 3/4", 6 ruffle Primrose Bowl—Radium pinks and blues
- \_\_\_\_\_ 124. M-Mlbg. 9", ICS, Rays and Ribbons Bowl—Loaded with color
- \_\_\_\_\_ 125. Olive G-Mlbg. 9", 6 ruffle Blackberry Wreath Bowl
- \_\_\_\_\_ 126. RARE G-Mlbg. Hobstar and Feather Giant Rosebowl—Fantastic Example—Important Piece and one of the Top Items in this sale!
- \_\_\_\_\_ 127. P-Mlbg. Feather and Heart Tumbler
- \_\_\_\_\_ 128. Radium A-Mlbg. 10 1/4", 6 ruffle Peacock Bowl—Super nice and detailed
- \_\_\_\_\_ 129. M-Mlbg. 4 1/4" Leaf and Little Flowers ruffled Compote
- \_\_\_\_\_ 130. P-Mlbg. 9 1/2", 6 ruffle Nesting Swan Bowl—Radium
- \_\_\_\_\_ 131. Radium P-Mlbg. 8 3/4", 6 ruffle, CRE Holly Sprig Vt. Bowl
- \_\_\_\_\_ 132. M-Mlbg. 9 1/4", ICS Primrose Bowl—Radium pinks and blues
- \_\_\_\_\_ 133. Crystal w/ Yellow Amber-Inwald Fleur De Lis 8" Vase—Not iridized
- \_\_\_\_\_ 134. Rare M-Inwald 11", deep Fleur De Lis Fruit Bowl
- \_\_\_\_\_ 135. M-Imp. Lustre Rose Butter Dish and Lid—Pretty example

- \_\_\_\_\_ 136. Rare M-Diamond and Cut Shields Water Pitcher
- \_\_\_\_\_ 137. Lilac Crystal-Star Pattern 4 1/2", round Berry Dish—Mkd. Industria Argentina
- \_\_\_\_\_ 138. Lush Amber-Grand Thistle Water Pitcher
- \_\_\_\_\_ 139. Lush Amber-Grand Thistle Tumbler
- \_\_\_\_\_ 140. B-Grand Thistle Tumbler-Chip on Base
- \_\_\_\_\_ 141. M-Western Thistle Tumblers—Choice A or B
- \_\_\_\_\_ 142. Yellow Amber—Omnibus Tumbler—Scarce color
- \_\_\_\_\_ 143. M-Buzz Saw Juice Glass—Tough size to find
- \_\_\_\_\_ 144. M-Banded Fruit 3 7/8" Ftd. Cordial
- \_\_\_\_\_ 145. M-Piccardo Band of Fruits Decanter—No stopper
- \_\_\_\_\_ 146. B-Piccardo Band of Fruits Cordial—Very scarce
- \_\_\_\_\_ 147. M-Piccardo Band of Fruits Cordial
- \_\_\_\_\_ 148. B-Fenton Butterfly and Berry Tumbler
- \_\_\_\_\_ 149. M-Dugan Stork in Rushes Tumbler
- \_\_\_\_\_ 150. M-N 14" Tree Trunk Mid-size Funeral Vase—4 3/4" Vase
- \_\_\_\_\_ 151. P-Dugan 7" Thin Panel Jester's Cap-type Vase—Very nice color
- \_\_\_\_\_ 152. P-N 8 1/2", ruffled Good Luck Bowl—Rib Ext.—Multi electric
- \_\_\_\_\_ 153. A-N 9", 8 ruffle Grape Leaves Bowl
- \_\_\_\_\_ 154. P-N Butterfly Bonbon
- \_\_\_\_\_ 155. A-N Smooth Rays Card Tray Bonbon—Tip chip
- \_\_\_\_\_ 156. P-N Blackberry ruffled Compote—BW Ext.
- \_\_\_\_\_ 157. M-Fenton Orange Tree Mug—2 1/2" Base
- \_\_\_\_\_ 158. P-Stretchy 6 3/4", 8 ruffle Bowl—Five Petal Flower in Base
- \_\_\_\_\_ 159. M-Fenton 10", ICS, Ball ftd. Stag and Holly Bowl
- \_\_\_\_\_ 160. P-N Grape and Cable Tobacco Jar w/ Lid—Repair to top rim of jar
- \_\_\_\_\_ 161. M-Birds and Grapes Wall Pocket Vase
- \_\_\_\_\_ 162. P-Pastel Swan Salt—Brass Souvenir Medallion "Pontchartrain"
- \_\_\_\_\_ 163. Rare B-N Drapery Rosebowl—Spotty interior, gorgeous outside!
- \_\_\_\_\_ 164. P-N Ivy Town Pump—Always in demand
- \_\_\_\_\_ 165. Dark P-N Corn Vase with plain base
- \_\_\_\_\_ 166. Pastel M-Fenton Orange Tree Loving Cup—Pale blue tint to base
- \_\_\_\_\_ 167. G-N Smooth Rays ruffled Compote
- \_\_\_\_\_ 168. Scarce A-Fenton 8 1/2", 3 in 1 edge Heart and Vine Bowl
- \_\_\_\_\_ 169. Dark M-Brockwitz 10 1/2", round Curved Star Bowl/Headdress Interior
- \_\_\_\_\_ 170. P-N Grape and Cable small size Punch Bowl, Base and Eight Cups
- \_\_\_\_\_ 171. P-N Grape and Cable mid-size Punch Bowl Base only
- \_\_\_\_\_ 172. M-Imp. Broken Arches round Punch Bowl, Base and 7 Cups—Plain Int.
- \_\_\_\_\_ 173. OUTSTANDING BLUE-Fenton Orange Tree Punch Bowl, Base and 6 Cups
- \_\_\_\_\_ 174. Rare M-Westmoreland Orange Peel Punch Bowl, Base and 6 matching Cups
- \_\_\_\_\_ 175. M-Westmoreland Orange Peel Stemmed Sherbets—3 x \$
- \_\_\_\_\_ 176. Radium M-Imp. Twins Fruit Bowl and Base
- \_\_\_\_\_ 177. M-Fenton Thistle Banana Bowl
- \_\_\_\_\_ 178. Deep P-Dugan Wreathed Cherry Lg. Oval Banana Bowl
- \_\_\_\_\_ 179. M-Fenton Mikado 8 ruffle Compote—Extra nice

180. P-Fenton 10", Ruffled Grape and Cable/Persian Medallion ftd. Fruit Bowl—Lots of color
181. B-Fenton Fentonia 9", round, ftd. Master Berry Bowl and 3 small Berry Bowls
182. B-Fenton 10", ICS, Ball ftd. Stag and Holly Bowl
183. Fantastic B-Fenton 9", deep, ruffled, ball ftd. Stag and Holly Fruit Bowl
184. Super Red-Imp. Double Scroll Console Bowl—Stretchy
185. Red Amberina-Imp. Double Scroll Candlesticks—pair
186. Dark M-Imp. Tiger Lily Water Pitcher w/4 Tumblers—Very nice
187. Pastel M-N Grape and Cable Water Pitcher—Lots of pinks and blues
188. Radium M-Jenkins 10 1/4" Cut Flowers cylindrical Vase
189. Rare Ice B-Dugan Venetian 6" Pinched Vase
190. Aqua-Imp. 11 1/2" Ripple Vase—Radium color
191. G-N 12" Mid-size Tree Trunk Funeral Vase—6" opening—Nice one!
192. G-Fenton Little Flowers 8 3/4", round, flared Master Berry Bowl and 3 small Berry Bowls
193. P-N Grape and Cable 11", ruffled Master Berry Bowl and 6 small Berry Bowls
194. P-N Grape and Cable Thumbprint 9 1/4", round Master Berry Bowl and 4 small Berry Bowls
195. M-Fenton 11", 8 ruffle, ball ftd. Two Flowers Bowl—Scarce and pretty!
196. Dark M-Rex Water Pitcher and 8 tumblers—Great set
197. Yellow Amber-Westmoreland 9 3/4", JIP Corinth Vase
198. Ruby Red-Dugan Royal Lustre Centerpiece Bowl w/ Black Amethyst Base
199. Ruby Red-Dugan Royal Lustre Candlesticks—pair
200. Rare A-N 6 1/4" Fern Brand Chocolates Advertising Plate—BW Ext.
201. A-Fenton 5", round Exchange Bank (Glendive, Mont.) Advertising Bowl—Also rare
202. A-Fenton Butterfly Bonbon—NOTE: Great "Easter Greetings/Swatner & Young/Fenton, Mo./1910 sticker on bottom of piece
203. M-Marathon Ohio Oil Advertising Piggy Bank—4" long
204. Great M-Fenton 6" Little Flowers Plate—4 Sides Up—Beautiful rarity
205. Radium M-Fenton Waterlily and Cattails 6", Tri-corner Plate
206. M-Dugan 6 1/4" Persian Garden Plate—Big Basketweave Ext.
207. Radium M-Imp. Grape 6 1/2" Plate
208. PO-Dugan 7 1/4", CRE Honeycomb Plate
209. Olive G Stretch-N #659 1/2 lb. Covered Candy Dish—Super iridescence
210. G-Fenton Butterflies Bonbon—Very scarce color and nice
211. G-N Leaf and Beads Rosebowl—Plain Int.—Very pretty
212. Blue Opal-Westmoreland 8" Corinth (?) Swirled Vt. Bowl—Extremely scarce Pattern, Unlisted in Carnival Guide Books
213. Clambroth—Fenton 9 1/2" Orange Tree Plate—Very undervalued
214. B-Fenton 9 3/4" Holly Plate—Popular Pattern and Piece
215. Sapphire-N Floral Enamel Decorated Tankard Water Pitcher—Not iridized, but it is gorgeous!
216. Custard-N 7 1/2", 6 ruffle Grape and Cable Bowl—Nutmeg finish, not iridized
217. Custard-N 10", ICS Peacock at Urn Master Bowl—Nutmeg finish, not iridized
218. Custard-N 9" Drapery Vt. Vase—Nutmeg finish, not iridized
219. Custard-N 9 1/4" Drapery Vt. Vase—Nutmeg finish, not iridized
220. M-Fenton Miller Furniture Adv. 6", 2-sides up, large openings Basket
221. M-Fenton 5 1/2", JIP, 2-row Open Edge Basket
222. M-Fenton 5 1/4", round Panther Berry Bowl
223. PO-Dugan 5 3/4", 6 ruffle Petal and Fan Berry Bowl—Jeweled Heart Ext.
224. BA-Dugan 7", CRE, 6 ruffle Honeycomb Bowl—Extra nice
225. PO-Dugan 8", 6 ruffle, CRE Six Petals Bowl
226. Rare G-N 4 1/2", round Singing Birds Berry Bowls—Tremendous irid!—2 x \$
227. B-Fenton 7", 6 ruffle Persian Medallion Bowl
228. B-Fenton Persian Medallion Bonbon—4 sides up
229. Scarce A-Fenton 8 3/4", 3 in 1 edge Vintage (Grape) Bowl—Neat shape
230. G-Fenton 8 3/4", 3 in 1 edge Vintage (Grape) Bowl—Ditto
231. A-Fenton 8 3/4", 3 in 1 edge Peacock Tail Bowl
232. M-Fenton 8 3/4", 3 in 1 edge Orange Tree Bowl—Very scarce shape
233. M-Fenton 7 1/2", 8 ruffle, Spat. ftd. Dragon and Lotus Bowl
234. M-Fenton 8", 8 ruffle, Spat. ftd. Two Flowers Bowl
235. M-Fenton 8", 8 ruffle, Spat. ftd. Peacock and Grape Bowl
236. G-Fenton 9", 6 ruffle Wild Blackberry Bowl—Blues and pinks
237. G-Fenton 9", CRE Stippled Rays Bowl—Very unusual size and shape
238. B-Fenton JIP, Ball ftd. Horse Medallion Bowl
239. M-Fenton ruffled Peacock at Urn Compote
240. M-Fenton 6", 6 ruffle Holly Hat—Beautiful
241. Dark M-Fenton Orange Tree Shaving Mug—Nice
242. M-Fenton 6", 6 ruffle, CRE Blackberry Spray Hat
243. M-Dugan Stork in Rushes Punch Cup
244. A-Dugan Stork in Rushes Punch Cup—2 x \$
245. M-N Memphis Punch Cup
246. M-Fenton 6", squatty Boggy Bayou Vase
247. M-Imp. 5", squatty Smooth Panels Vase
248. Colorful M-N 9", 8 ruffle, Spat. ftd. Sunflower Bowl
249. P-N Smooth Rays Bonbon—4 sides up
250. BA-N 7", Wild Rose ftd. Bowl—Stippled Rays Int.
251. G-N 7 1/4" Wild Rose ftd. Bowl—Plain Int.
252. G-N Wild Rose Nut Bowl—Smooth Rays Int.
253. A-N 8 3/4", ruffled, Stippled Strawberry Bowl—Rib Ext.—Great electric
254. G-N PCE Grape and Cable Bowl—BW ext.—Emerald highlights



- \_\_\_\_\_ 255. P-N 8 3/4", ruffled Grape and Cable Bowl—BW Ext.—Rainbow iridescence  
 \_\_\_\_\_ 256. Rare W-N 11", 8 ruffle Grape and Cable Large Berry Bowl—BW Ext.

### **A RUN OF GOOD LUCK (BOWLS) COMING UP!:**

- \_\_\_\_\_ 257. B-N ruffled Good Luck Bowl—Rib Ext.—Silvers and golds  
 \_\_\_\_\_ 258. B-N ruffled Good Luck Bowl—Rib Ext.—Multi electric  
 \_\_\_\_\_ 259. P-N ruffled Good Luck Bowl—Rib Ext.—Blues, purples and golds  
 \_\_\_\_\_ 260. P-N ruffled Good Luck Bowl—BW Ext.  
 \_\_\_\_\_ 261. Soft M-N ruffled Good Luck Bowl—BW Ext.—Fabulous yellow irid.  
 \_\_\_\_\_ 262. Pastel M-N ruffled Good Luck Bowl—Rib Ext.—Excellent pastel irid.  
 \_\_\_\_\_ 263. Pumpkin M-N ruffled Good Luck Bowl—Rib Ext.  
 \_\_\_\_\_ 264. Rich M-N PCE Good Luck Bowl—Rib Ext.—Very nice  
 \_\_\_\_\_ 265. Dark M-N ruffled Good Luck Bowl—BW Ext.—Lovely hues  
 \_\_\_\_\_ 266. Nice M-N ruffled Good Luck Bowl—BW Ext.—Yellows and pinks  
 \_\_\_\_\_ 267. M-N ruffled Good Luck Bowl—BW Ext.—The end of the "lucky" streak!!  
 \_\_\_\_\_ 268. G-N Greek Key and Scales 8 1/2", 8 ruffle Bowl—Plain Int.  
 \_\_\_\_\_ 269. G-N Rainbow ruffled Compote—Marigold Overlay  
 \_\_\_\_\_ 270. P-N Rainbow ruffled Compote—Good color  
 \_\_\_\_\_ 271. P-N Blackberry ruffled Compote—BW Ext.  
 \_\_\_\_\_ 272. G-N 9", 8 ruffle Nippon Bowl—BW Ext.—Very pretty  
 \_\_\_\_\_ 273. P-N 9", 8 ruffle Stippled Rays Bowl—Smooth Ext.  
 \_\_\_\_\_ 274. M-N 9 1/2", ruffled Stippled Rays Bowl—BW Ext.  
 \_\_\_\_\_ 275. P-N 9 1/2" 8 ruffle salad bowl shape Stippled Rays Bowl—Smooth Ext.  
 \_\_\_\_\_ 276. G-N 9", 8 ruffle Stippled Rays Bowl—Smooth Ext.—Great coloration  
 \_\_\_\_\_ 277. Dark M-N Grape and Cable Standard Tumblers, very well matched—5 x 5  
 \_\_\_\_\_ 278. Teal-Westmoreland Leaf Swirl ruffled Compote—Way above average  
 \_\_\_\_\_ 279. G-Fenton 6 ruffle Blackberry Bramble Compote  
 \_\_\_\_\_ 280. Yellow Amber-Fenton ruffled Small Rib Whimsey stemmed Cuspidor  
 \_\_\_\_\_ 281. A-Fenton ruffled Wreath of Roses Compote  
 \_\_\_\_\_ 282. B-Fenton ruffled Wreath of Roses Compote  
 \_\_\_\_\_ 283. M-Fenton Peacock Tail stemmed Bonbon—4 sides up  
 \_\_\_\_\_ 284. M-Dugan 8 ruffle Coin spot Compote  
 \_\_\_\_\_ 285. M-N Daisy and Plume stemmed Rosebowl  
 \_\_\_\_\_ 286. A-Fenton 8 3/4", 6 ruffle Heart and Vine Bowl  
 \_\_\_\_\_ 287. B-Fenton 8", ruffled, Ball ftd. Grape and Cable Bowl  
 \_\_\_\_\_ 288. B-Fenton 7 3/4", CRE Autumn Acorns Bowl—Scarce shape  
 \_\_\_\_\_ 289. G-Fenton 9", 6 ruffle Autumn Acorns Bowl—Good color and strike  
 \_\_\_\_\_ 290. A-Fenton 9", 6 ruffle Captive Rose Bowl—Scarce color  
 \_\_\_\_\_ 291. G-N 9" Three Fruits Plate—BW Ext.—Wear in center  
 \_\_\_\_\_ 292. Radium M-Fenton 10" Holly Plate—Very flat and nice

- \_\_\_\_\_ 293. M-Imp Open Rose 9" Plate—Great example  
 \_\_\_\_\_ 294. Electric P-N 9 1/8" flat Grape and Cable Vt. Plate—Smooth Ext.  
 \_\_\_\_\_ 295. M-N 9" Stippled Three Fruits Plate—Rib Ext.—Always in demand  
 \_\_\_\_\_ 296. Ice G-N 9" Peacocks Plate—Rib Ext.—Pinks, yellows, blues  
 \_\_\_\_\_ 297. Pumpkin M-N PCE Peacocks Bowl—Rib Ext.  
 \_\_\_\_\_ 298. Scarce B-N PCE Peacocks Bowl—Rib Ext.—electric  
 \_\_\_\_\_ 299. Rich M-N 9", ruffled, Stippled Three Fruits collar base bowl—Extra nice one  
 \_\_\_\_\_ 300. Electric B-N 9" Stippled Three Fruits Plate—Rib Ext.—A Beauty  
 \_\_\_\_\_ 301. A-N PCE Strawberry Bowl—Scarce BW Ext.  
 \_\_\_\_\_ 302. Scarce Pastel M-N PCE Stippled Strawberry Bowl—Rib Ext.—Pinks and blues  
 \_\_\_\_\_ 303. M-Fenton Persian Medallion Hair Receiver—Lots of color  
 \_\_\_\_\_ 304. Aqua-Fenton 6", 6 ruffle, Ball ftd. Waterlily Sauce Bowl—Hard to find and nice  
 \_\_\_\_\_ 305. M-Fenton 6", round, Ball ftd. Lotus and Grape Bowl—Good color and detail  
 \_\_\_\_\_ 306. G-Fenton Vintage Grape Fernery Bowl—Outstanding  
 \_\_\_\_\_ 307. M-Fenton 8 3/4", ICS Holly Bowl—Better piece  
 \_\_\_\_\_ 308. Dark B-Fenton 9 1/2", 3 in 1 edge Holly Bowl—Multi-color rainbow of irid.  
 \_\_\_\_\_ 309. Frosty W-Fenton 9", 6 ruffle Holly Bowl  
 \_\_\_\_\_ 310. Dark M-Fenton 8", CRE Holly Bowl—Extremely scarce shape  
 \_\_\_\_\_ 311. Rich M-Fenton 7", ruffled Horse Medallion Bowl—A lot of color and detail  
 \_\_\_\_\_ 312. Dark B-Fenton 8 1/2", ICS, collar base Dragon and Lotus Bowl—Above average  
 \_\_\_\_\_ 313. Fantastic G-Fenton 8", ICS Lotus and Grape Bowl—Wow  
 \_\_\_\_\_ 314. A-Fenton 9", 8 ruffle Peacock and Urn Bowl—Scarce color  
 \_\_\_\_\_ 315. Rich M-Fenton 8", ICS Plaid Bowl—Lots of color  
 \_\_\_\_\_ 316. A-Fenton 8 3/4", 3 in 1 edge Autumn Acorns Bowl—Unusual shape  
 \_\_\_\_\_ 317. M-Fenton 8 3/4", 8 ruffle Wild Blackberry Bowl—Lovely example, not often seen  
 \_\_\_\_\_ 318. Powder Blue Base-Fenton 9 1/4", 8 ruffle Leaf Chain Bowl—Absolutely Pumpkin Iridescence! Very different.  
 \_\_\_\_\_ 319. Rare G-Fenton 9 3/4", 3 in 1 edge, Ball ftd. Ten Mums Bowl—Loaded with color  
 \_\_\_\_\_ 320. Pumpkin M-Fenton 10", 8 ruffle Cherry Chain Vt. Bowl—Six cherries in center  
 \_\_\_\_\_ 321. B-Fenton 8 3/4", 3 in 1 edge Ribbon Tie Bowl—Undervalued and outstanding  
 \_\_\_\_\_ 322. M-Fenton 4 1/4", 6 ruffle Kittens Bowl  
 \_\_\_\_\_ 323. A-Fenton 9 1/2", 3 in 1 edge Feathered Serpent Bowl—Distinctive and nice  
 \_\_\_\_\_ 324. M-Fenton 11", ICS, Ball ftd. Stag and Holly Bowl  
 \_\_\_\_\_ 325. Pastel Lav-Fenton Holly ruffled Compote—Soft Marigold overlay  
 \_\_\_\_\_ 326. Red-Fenton 6", 6 ruffle Holly Hat—All-time favorite  
 \_\_\_\_\_ 327. Red Amberina-Fenton 5", 6 ruffle Holly Compote  
 \_\_\_\_\_ 328. G-Imp. Grape 9", 8 ruffle Bowl—Radium silver



- \_\_\_\_\_ 329. M-Imp. Grape 9", 8 ruffle Bowl—Dark and nice
- \_\_\_\_\_ 330. Teal Green-Fenton 9", Spat. ftd. Peacock and Grape plate—Outstanding and it glows
- \_\_\_\_\_ 331. BA-Hand made beaded hatpin
- \_\_\_\_\_ 332. BA-Big Butterfly hatpin
- \_\_\_\_\_ 333. M-Iris and Herringbone 6" tumbler
- \_\_\_\_\_ 334. M-Dugan 7 1/4", 8 ruffle Golden Grape Bowl
- \_\_\_\_\_ 335. M-Diamond and File 8 1/4", 6 ruffle Bowl
- \_\_\_\_\_ 335A. M-Dugan Leaf Rays Nappy
- \_\_\_\_\_ 336. M-Dugan Question Marks stemmed Bonbon—Well struck
- \_\_\_\_\_ 337. A-Fenton Paneled Dandelion Tumblers—3 x \$
- \_\_\_\_\_ 338. G-Mlbg. Diamonds Water Pitcher—Repair on lip
- \_\_\_\_\_ 339. A-Mlbg. 10", 6 ruffle Whirling Leaves Bowl—Chip on edge
- \_\_\_\_\_ 340. P-N Grape and Cable Powder Jar w/ Lid—Lid is cracked and reglued
- \_\_\_\_\_ 341. Dark M-Imp. Flute 11 1/2" Vase—Radium
- \_\_\_\_\_ 342. M-Imp. Crackle Car Vases, with brackets—Pair, both nice
- \_\_\_\_\_ 343. A-Fenton 6", 2 row Open Edge Blackberry Basket—Heat check in base
- \_\_\_\_\_ 344. M-Ribbed Salt and Pepper Shakers w/ tops
- \_\_\_\_\_ 345. M-Pyrex #63 Insulator
- \_\_\_\_\_ 346. M-Imp. 9 1/2" Heavy Grape Master Bowl
- \_\_\_\_\_ 347. B-Enameled Cherries Tumblers—2 x \$
- \_\_\_\_\_ 348. W-Imp. Frosted Block 5" Rosebowl—Mkd. Made in USA
- \_\_\_\_\_ 349. M-Rolled rib 7 3/4", 8 ruffle bowl—Pattern?
- \_\_\_\_\_ 350. M-Imp. Crackle 9 1/2" Console Bowl—Radium and delightful
- \_\_\_\_\_ 351. M-Wide Panel 11" flared Console Bowl
- \_\_\_\_\_ 352. A-Fenton 9 1/2", ruffled Stippled Rays Bowl
- \_\_\_\_\_ 353. Carnival Glass Box Lot—5 items
- \_\_\_\_\_ 354. Carnival Glass Box Lot—5 items
- \_\_\_\_\_ 355. Carnival Glass Box Lot—6 items
- \_\_\_\_\_ 356. Carnival Glass Box Lot—5 items
- \_\_\_\_\_ 357. Carnival Glass Box Lot—7 items
- \_\_\_\_\_ 358. Carnival Glass Box Lot—4 items
- \_\_\_\_\_ 359. Carnival Glass Box Lot—4 items
- \_\_\_\_\_ 360. M-Jackman Pint Whiskey Bottle
- \_\_\_\_\_ 361. M-Set: Golden Wedding Whiskey Bottles—Quart, pint, 1/2 pint, 1/10 pint
- \_\_\_\_\_ 362. M-European stemmed Compote—Circles and buttons
- \_\_\_\_\_ 363. M-Large European Compote—Impressed floral design
- \_\_\_\_\_ 364. Deep P-Dugan Fisherman's Mug—Rim nick
- \_\_\_\_\_ 365. M-Corning Pyrex #662 Insulator
- \_\_\_\_\_ 366. P-Dugan Maple Leaf Water Pitcher—Base cracked
- \_\_\_\_\_ 367. M-Curved Star 9", round Bowl—Headdress Int.
- \_\_\_\_\_ 368. G-Fenton 8", ruffled, Spat. ftd. Grape and Cable Bowl
- \_\_\_\_\_ 369. M Flash-Stork ABC 7 1/2" Child's Plate
- \_\_\_\_\_ 370. M-Fenton 7", ruffled Vintage Grape Bowl
- \_\_\_\_\_ 371. M-Fenton 9", ruffled Vintage Grape Bowl
- \_\_\_\_\_ 372. Clambroth-Imp. 7 1/2", flared Smooth Panels Bowls—Pair—Iron Cross mark
- \_\_\_\_\_ 373. A-N 8 1/2", ruffled Stippled Rays Bowl
- \_\_\_\_\_ 374. M-Dugan Question Marks stemmed Compote
- \_\_\_\_\_ 375. B-Dugan Peacock at Fountain Water Pitcher and Tumbler—Both cracked
- \_\_\_\_\_ 376. G-N 9", ruffled Grape and Cable Bowl—Tooth chipped
- \_\_\_\_\_ 377. Radium M-Dugan 8 1/2", ruffled Windflower Bowl—Rim chip
- \_\_\_\_\_ 378. Red-Fenton 6 1/2", 6 ruffle Blackberry Spray Hat—Rim chip
- \_\_\_\_\_ 379. B-N round Bushel Basket—Interior crack
- \_\_\_\_\_ 380. Carnival Glass Box Lot—6 chipped items
- \_\_\_\_\_ 381. Carnival Glass Box Lot—5 chipped pieces
- \_\_\_\_\_ 382. M-Imp. Octagon large Compote—Marked IG
- \_\_\_\_\_ 383. P-Fenton Lily of the Valley Bell—Contemporary
- \_\_\_\_\_ 384. B-Turkey Toothpick Holder—Contemporary

### **SPECIAL NOTE:**

**NO SUNDAY CALLS, PLEASE!**

**Winning Absentee Bidders will be contacted Monday through Wednesday of the week following the Auction!**

**Thank You!**

### **NOTE: NEW ADDRESS**

For Free Color Catalogs & Information Write:  
**Mickey Reichel**  
 18350 Hunters Ridge Ct., Boonville, MO 65233-2971  
 or Call: 660-882-5292 days or  
 660-882-5283 evenings  
 E-mail: mreichel@undata.com

**NEED QUALITY CARNIVAL GLASS & ANTIQUES**

*"We don't want all the Business,  
 Just Yours."*

**WE DO AUCTIONS RIGHT!!**

### **2004 CALENDAR**

**January 8, 2005**

**14TH ANNUAL**

**NEW YEAR'S EXTRAVAGANZA**

**Setting Dates for February 2005**

**Setting Dates for March 2005**

**Setting Dates for April 2005**

**Setting Dates for May 2005**

