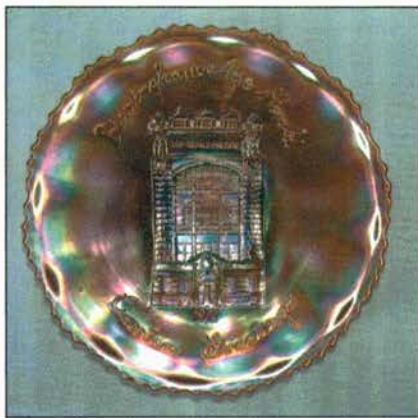




Lot #125



Lot #105



Lot #225



Lot #15



Lot #100



Lot #16

BURNS

AUCTION SERVICE

2004 Great Lakes Carnival Glass Club Convention Auction

10:00 a.m. Saturday,
November 6, 2004

(preview Fri. evening 9 p.m. (earlier if possible);
Sat. morning 8 a.m.)

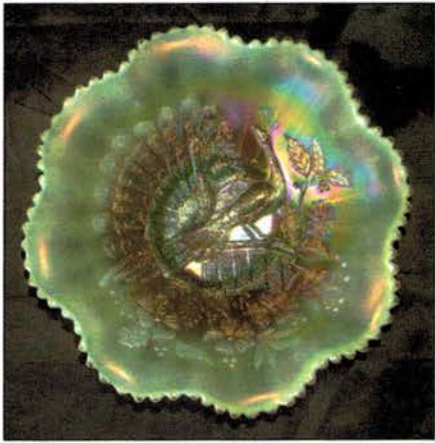
at the **Best Western - Midway**

7711 West Saginaw Hwy, Lansing, MI 48917

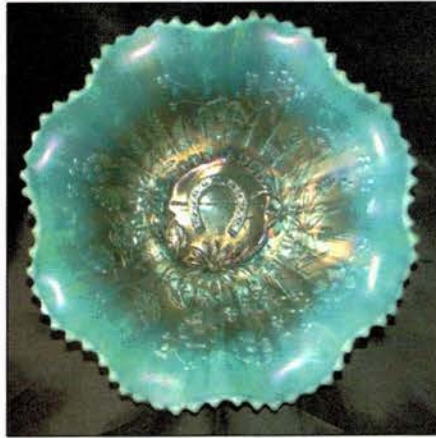
(517) 627-8471

or

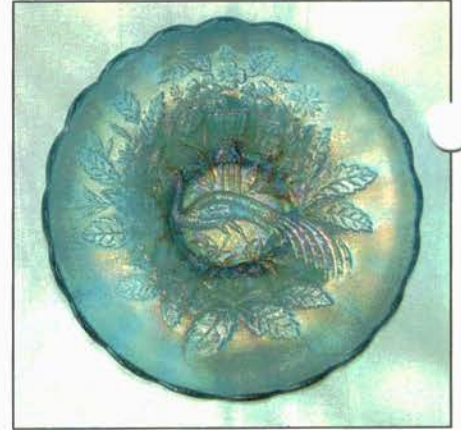
(877) 772-6100



Lot #90



Lot #325



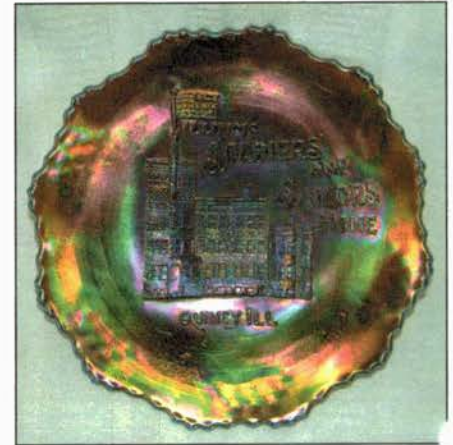
Lot #300



Lot #130



Lot #226



Lot #227



Lot #150



Lot #5



Lot #180



Lot #60



Lot #85



Lot #120

Well folks! Even a Blind Pig finds an acorn once in a while! And it seems to be my turn...

It was late getting together but we ended up with a fantastic "Great Lakes Carnival Glass Club" Convention Auction. This year's auction features items from everywhere from Connecticut to Washington State. This Convention, as usual, will be filled with great activities and we're thrilled to be able to add this fantastic selection of glass to the event. The Best Western - Midway will host the event. It's been the favored "watering hole" for this Club for some time and it's located right off Exit 93B of I-96, in Lansing, Michigan. For reservations call the motel direct at 1-877-772-6100 or 1-517-627-8471. For more info on the Convention call Mark Richter at (248) 645-0811.

Remember- if you're thinking about selling - give us a shot: give a call. We appreciate the opportunity to be of service (and we'd love the work!). Mail, email, phone & fax bids due by Thursday, November 4, 2004.

Burns Auction Service

Tom Burns
P.O. Box 608
Bath, New York 14810
(607) 776-7942 Cell: (607) 731-9302

Bill Richards
44 Water Street, Poland OH 44514
(330) 757-2001
FAX (330) 757-4917

Bill Richards III
2253 Country Lane
Poland, OH 44514
(330) 755-2620 Cell: (330) 717-4985

Mail Bids honored under the following conditions:

- No deposit required. Bidders will take full responsibility to honor any and all bids we execute for them. Payment in full plus postage and handling required after notification and before we ship any item to them.
- Items are bid on in perfect condition with average or above average iridescence OR as listed in the brochures. Bids will not be carried out when damage on an item has been found during the auction. **PEOPLE PRESENT AT THE AUCTION ARE RESPONSIBLE FOR FINDING ANY PINHEADS, WEAR, SPOTTINESS, MANUFACTURER'S DEFECTS OR ANY OTHER MINOR FLAWS, ETC.**
- Successful bidders will be notified by collect call from the auctioneer **SO BE SURE TO INCLUDE PHONE NUMBER.**
- Phone inquiries about the glass or any other questions are welcome.
- If you have some other person at the auction bidding for you, they must pay for the item before taking it.
- Any terms or conditions given the day of the auction will supersede any previously published information.
- Mail, e-mail, fax and phone bids are due by Thursday, Nov. 4, 2004.

For photos of just about every item in every auction visit our website at:
<http://www.woodsland.com/burnsauction/>

- | | | | | | |
|--------|-----|---|---------|-----|--|
| 12 1/2 | 1. | I.G. 1960's Homestead NuArt Plate - Smoke (nice irid.) | 1200 | 16. | N G&C 8 PC. RUFFLED MASTER PUNCH SET - WHITE (EXTREMELY RARE "AS IS" SET; FROSTY W/ GREAT IRID.; BASE OF BOWL HAS 2 OR 3 CHIPS) |
| 35 | 2. | Terry Crider "Eyewinker" J.I.P. Whimsey Vase - White (frosty w/ excellent irid. & a nice shape) | 70 | 17. | N G&C Master Punch Base only - Purp. (tough item if you need one) |
| 45 | 3. | (2) Terry Crider "Daisy & Button" Shot Glasses - Mari. (...or Toothpick Holders; really nice irid.) | 10x4 | 18. | (4) N G&C Handled Punch Cups - Amyth. (all different tints; selling choice) |
| 40 | 4. | 1969 Presznicks Carnival Glass Museum G&C Humidor & Lid - Purp. (popular older collectible museum item from 1969) | 35, 10 | 19. | (2) N G&C Stippled Handled Punch Cups - Dk. Purp. (very rare items; very dark base color) |
| 400 | 5. | N MEMPHIS RUFFLED PUNCH BOWL & BASE - PURP. (RARE & DESIRABLE; PERFECT W/ NICE DARK COLOR & IRID.) | 35x4 | 20. | (4) N G&C STIPPLED HANDLED PUNCH CUPS - BLUE (RARE; VERY ATTRACTIVE EXAMPLES; NICE COLOR & IRID.) |
| 5x3 | 6. | (3) N Memphis Punch Cups - Purp. (nice color & irid.; selling choice) | 10x5 | 21. | (5) N G&C Stippled Handled Punch Cups - Green (very scarce; nice color w/ different highlights) |
| 35, 30 | 7. | (2) N Memphis Handled Punch Bases only - Mari. & Purp. (both are nice; selling choice) | 5x3 | 22. | (3) N G&C Stippled Handled Punch Cups - Mari. (nice color & irid.; selling so much each) |
| 55 | 8. | N Acorn Burr Punch Base only - Mari. (nice dark color w/ goldish highlights) | 5x3 | 23. | (3) N G&C Handled Punch Cups - Odd Green (odd base color w/ a Mari. overlay; selling so much each) |
| 40 | 9. | N Peacock at the Fountain Punch Base only - Mari. (nice satiny finish) | 5x3 | 24. | (3) N G&C Handled Punch Cups - Mari. (nice color & irid.; selling so much each) |
| 85 | 10. | N G&C Standard size Punch Base only - Smoke / Clamb. (rare base color w/ excellent irid.; tough item) | 90 | 25. | N G&C Ftd. Fernery - Amyth. (rare & desirable; a lighter base color; has bruise on inside edge) |
| 20 | 11. | N G&C Standard size Punch Base only - Purp. (nice satiny irid.) | 225 | 26. | N G&C BANDED FTD. HATPIN HOLDER - PURP. (RARE VARIATION; DARK COLOR & IRID.) |
| 27 1/2 | 12. | Imperial Waffle Block Punch Base only - Mari. (sorta tough part to find) | 125, 75 | 27. | (2) N G&C ftd. Hatpin Holders - Mari. (scarce w/ average color & irid.; selling choice) |
| 25 | 13. | 10 1/2" Tall N Thin Rib Standard Swung Vase - Russet Green (nice color & irid.) | 85 | 28. | N G&C Sweetmeat Base Flared Whimsey - Purp. (excellent example w/ great color & irid.) |
| 35 | 14. | (2) 11" Tall N Four Rib Pillar Swung Vases - Russet Green (both are nice & well matched; selling so much each for pair) | 200 | 29. | N G&C Whimsey Decanter & Stopper - Purp. (stopper is a beaut; base is satiny w/ a hairline) |
| 3250 | 15. | N G&C 10 PC. RUFFLED MASTER PUNCH SET - ICE BLUE (EXTREMELY RARE & DESIRABLE "AS IS" ITEM; SUPER COLOR & IRID.; BASE OF BOWL HAS 2 CHIPS - PEDESTAL HAS HAIRLINE ACROSS TOP) | 225 | 30. | N PEACOCK AT THE URN LG. ICE CREAM BOWL - AMYTH. (VERY SCARCE & DESIRABLE; NICE BASE COLOR W/ GOLD HIGHLIGHTS) |
| | | | 40x2 | 31. | (2) N Peacock at the Urn ind. Ice Cream Bowls - Amyth. (nice color; selling choice) |
| | | | 55x2 | 32. | (3) N Peacock at the Urn ind. Ice Cream Bowls - Blue / Elec. Blue (super irid., a couple have odd shapes) |

- 165 33. N PEACOCK AT THE URN ALL OVER STIPPLED LG. ICE CREAM BOWL - MARI. (SCARCE; ODD TINT FOR THIS ITEM)
- 100 34. N Ivy Town Pump Novelty - Purp. (nice; damaged example)
- 200 35. FENTON KITTENS RUFFLED TOOTHPICK HOLDER - BLUE (RARE & DESIRABLE; NICE COLOR & IRID.)
- 200 36. FENTON KITTENS ODD RUFFLED TOOTHPICK HOLDER - BLUE (RARE & DESIRABLE; NICE COLOR & IRID.; ODD SHAPE)
- 50 37. FENTON KITTENS ODD RUFFLED TOOTHPICK HOLDER - LT. BLUE (RARE & DESIRABLE LIGHTER BASE COLOR; VERY UNUSUAL)*
- 155, 225 38. (2) FENTON KITTENS HANDLED CUP & SAUCERS - MARI. (RARE & DESIRABLE SETS; ONE DARKER; SELLING CHOICE)
- 150 39. Fenton Kittens Round Cereal Bowl - Mari. (very scarce & desirable; nice color & detail)
- 125 40. FENTON KITTENS WHIMSEY RUFFLED BOWL - MARI. (2 SETS OF KITTENS; HAS A VERY RARE SHAPE; NEAT!!)
- 105 41. Fenton Kittens Odd Ruffled Toothpick Holder - Dk. Mari. (2 sets of kittens; odd shape w/ great color & irid.)
- 105 42. Fenton Kittens Odd Ruffled Toothpick Holder - Dk. Mari. (very scarce; dark & very attractive)
- Xcracked 43. Fenton Kittens Ruffled Toothpick Holder - Dk. Mari. (very scarce; dark & very attractive)
- 85 44. Fenton Kittens 4 sided Bowl - Mari. (scarce; nice)
- 185 45. FENTON KITTENS 6 RUFFLED BOWL - LT. AQUA / MARI. (ODD TINT TO THE BASE COLOR; A BIT DIFFERENT)
- 105 46. Fenton Kittens 4 sided Bowl - Odd tint / Mari. - (another odd colored item; a bit different)
- 135 47. Fenton Kittens 2 sided Banana Dish - Mari. - (nice color; scarce)
- 130 48. Fenton Kittens 2 sided Banana Dish - Mari. Exterior (iridized only on the exterior; different)
- 27 1/2 x 2 49. (2) Fenton Stretch ind. Round Nut Cups - Grecian Gold (one darker; selling choice)
- 115 50. Imperial Luster Rose ftd. Ruffled Fruit Bowl - Red (very attractive; damaged example; has hairline)
- 2200 51. 4 1/2" X 7" FENTON STRETCH FTD. 4 SIDED DOUBLE DOLPHIN COMPOTE - RED (EXTREMELY RARE RED STRETCH ITEM; ONLY VERY FEW KNOWN; VERY ATTRACTIVE)
- 215 52. 4" X 6 1/2" FENTON STRETCH FTD. 4 SIDED DOUBLE DOLPHIN COMPOTE - TOPAZ (RARE & DESIRABLE COLOR THAT REALLY WANTS TO GLOW)
- 150 53. 5 " X 7" Fenton Stretch ftd. 4 sided Double Dolphin Compote w/ Diamond Quilt Int. - Royal Blue (a very rare non-iridized example; great color w/ the interior pattern)
- 85 54. 5 " X 7" Fenton Stretch ftd. 4 sided Double Dolphin Compote w/ Diamond Quilt Int. - Tangerine Opal. (another rare non-iridized example; great color & opal.)
- 125 55. 4 1/2" " X 7" Fenton Stretch ftd. 4 sided Double Dolphin Compote w/ Diamond Quilt Int. - Ruby Red (scarce; nice dark color)
- 55 56. 4 1/2" " X 7" Fenton Stretch ftd. 4 sided Double Dolphin Compote w/ Silver Overlay - Ebony (very scarce; silver overlay has wear)
- 60 57. 5 " X 7" Fenton Stretch ftd. 4 sided Double Dolphin Compote - Cameo Opal. (scarce; has really nice opal)
- 65 58. 4 1/2" " X 7" Fenton Stretch ftd. 4 sided Double Dolphin Compote - Jade (scarce; nice color)
- 45 59. 5 1/4" Tall X 6 1/2" Fenton Double Dolphin ftd. 2 sided Compote - Clear Opal. (very scarce in this color; nice opal. - tilts a bit)
- 700 60. 5" X 6 1/2" FENTON STRETCH FTD. DOUBLE DOLPHIN 4 SIDED COMPOTE - TANGERINE (VERY RARE AND DESIRABLE; REALLY NICE BASE COLOR, SHAPE & IRID.)
- 165 61. 5 1/2" X 6 1/2" Fenton Stretch Double Dolphin 2 sided Compote - Lt. Ice Blue (very scarce; nice pastel finish)
- 55 62. 5 1/2" X 6 1/2" Fenton Stretch Double Dolphin 2 sided Compote - Velva Rose (very scarce; nice pastel finish)
- 305 63. 5 1/2" X 6 1/2" FENTON STRETCH DOUBLE DOLPHIN 2 SIDED COMPOTE W/ DIAMOND QUILT INT. - ICE GREEN (RARE ITEM W/ INTERIOR DESIGN; NICE PASTEL LOOK)
- 55 64. 4 1/2 X 7" Fenton Double Dolphin ftd. Flared Compote w/ Diamond Quilt Int. - Crystal Green (scarce; nice shape & color)
- 225 65. 4 1/2" TALL X 6" FENTON STRETCH DOUBLE DOLPHIN FTD. FLARED COMPOTE - TANGERINE OPAL. (VERY RARE; GREAT COLOR; OPAL. & SHAPE; NICE)
- 70 66. 5 1/2" Tall X 6 1/2" Fenton Double Dolphin 6 Ruffled ftd. Compote - Blue Opal. (non-iridized example that's still rare & desirable)
- 100 67. 4 1/2" X 6" Fenton Double Dolphin ftd. 6 Ruffled Compote - Ruby Red (scarce; nice dark color)
- 35 68. 6" Tall Fenton Double Dolphin ftd. Fan Vase w/ Diamond Quilt Int. - Crystal Pink (scarce; nice)
- 25 69. 6" Tall Fenton Double Dolphin ftd. Fan Vase w/ Diamond Quilt Int. - Aqua Marine / Crystal Lt. Blue (scarce; nice)
- 375 70. 6" TALL FENTON STRETCH DOUBLE DOLPHIN FTD. FAN VASE W/ DIAMOND QUILT INT. - DK. ICE BLUE (I DO NOT RECALL EVER SEEING THIS COLOR-SUPER!)
- 25 71. 6" Tall Fenton Stretch Double Dolphin ftd. Fan Vase - Dk. Velva Rose (darker look; nice color & stretch effect)
- 25 72. 6" Tall Fenton Stretch Double Dolphin ftd. Fan Vase - Velva Rose (lighter base color; nice pastel finish)
- 105 73. 6" Tall Fenton Stretch Double Dolphin Ft. Fan Vase - Blue Opal. (very scarce non-iridized item; nice opal.)
- 30 74. 6" Tall Newer Fenton Stretch Double Dolphin ftd. Fan Vase - Purp. (signed w/ the F)
- 175 75. 5 1/2" TALL FENTON STRETCH DOUBLE DOLPHIN FTD. FAN VASE - TOPAZ (VERY RARE STRETCH COLOR IN A RARE SIZE; PERFECT & ATTRACTIVE)
- 45 76. 5 1/2" Tall Fenton Stretch Double Dolphin ftd. Fan Vase - Lt. Blue (very scarce item w/ a nice pastel finish)
- 125 77. 5 1/2" Tall Fenton Stretch Double Dolphin ftd. Fan Vase - Ice Green (very scarce item w/ a nice pastel finish)
- 75 78. 5 1/2" Tall Fenton Double Dolphin ftd. Fan Vase - Ruby (non-iridized & scarce; nice color)
- 35 79. 5 1/2" Tall Fenton Double Dolphin ftd. Fan Vase - Ebony (non-iridized & scarce; nice)
- 55 80. 5 1/2" Tall Fenton Double Dolphin ftd. Fan Vase - Cameo Opal. (non-iridized & scarce; nice opal.)
- 65 81. 5 1/2" Tall Fenton Double Dolphin ftd. Fan Vase w/ Diamond Quilt Int. - Tangerine Opal. (very rare crystal color w/ great opal.)
- 25 82. 5 1/2" Tall Fenton Double Dolphin ftd. Fan Vase w/ Diamond Quilt Int. - Crystal Lavender (another scarce color - wish it was iridized)
- 35 83. 3 1/2" N'wood Stretch Cupped in Rose Bowl - Blue Opal (nice color)
- 250 84. M'burg Seacoast Pin Tray - Green (scarce; average irid. & has epoxy spot on edge)

- 3000 85. FENTON STRETCH 2 PC. FLARED PUNCH BOWL & BASE - RED (VERY RARE & VERY DESIRABLE - DARK COLOR W/ GREAT STRETCH EFFECT; TOP A BIT DARKER THAN THE BASE)
- 450 86. 10" FENTON LOTUS & POINSETTIA LG. 3 FTD. 8 RUFFLED BOWL - GREEN (VERY SCARCE IN THIS COLOR; EXCELLENT SATINY FINISH)
- 5 87. 9" Fenton Holly 8 Ruffled Bowl - Aqua / Mari. (rare but cracked & chipped)
- 425 88. N GRAPE & GOTHIC ARCHES 7 PC. WATER SET - BLUE (RARE SET; PERFECT W/ NICE COLOR & IRID.)
- 125 89. (2) N G&C Ruffled Master Punch Bowls & Bases - Purp. (selling choice; bases OK but one top has been glued together; other is cracked)
- 1150 90. N PEACOCK RUFFLED BOWL W/ RIBBED EXT. - AQUA OPAL. (RARE & VERY DESIRABLE; GREAT OPAL. & IRID. W/ NICE DETAIL - YOU'D LIKE IT)
- 700 91. N PEACOCK RUFFLED BOWL W/ RIBBED EXT. - GREEN (VERY RARE & DESIRABLE; DARK COLOR W/ BRIGHT IRID.)
- 500 92. N PEACOCK RUFFLED BOWL W/ RIBBED EXT. - BLUE - (RARE & DESIRABLE; PERFECT W/ BLUE HIGHLIGHTS)
- 135 93. N PEACOCK RUFFLED BOWL W/ RIBBED EXT. - PURP. (VERY SCARCE; PERFECT W/ REALLY NICE COLOR & IRID.)
- 195 94. N Peacock Ruffled Bowl w/ Ribbed Ext. - Dk. Mari. (very scarce; dark w/ nice irid.; really nice)
- 185 95. N PEACOCK RUFFLED BOWL W/ RIBBED EXT. - CUSTARD / NUTMEG (RARE & UNUSUAL; HAS REALLY BRIGHT NUTMEG) *
- 35 96. N Peacock Ruffled Bowl w/ Ribbed Ext. - Crystal Blue w/ Opal. Tips (scarce; nice base color w/ opal. on very tips) *
- 215 97. N GOOD LUCK STIPPLED BOWL W/ P.C.E. & RIBBED EXT. - BLUE (RARE & DESIRABLE; PERFECT; DARK BASE COLOR W/ BRIGHT MULTI-COLORED FINISH)
- 315 98. N GOOD LUCK STIPPLED BOWL W/ P.C.E. & RIBBED EXT. - PURP. (VERY SCARCE W/ SUPER IRID.-REALLY NICE)
- 215 99. U.S. GLASS SAXON STRETCH TOOTHPICK HOLDER - CELESTE BLUE (VERY RARE ITEM; GREAT COLOR W/ MANUF. GROUND BASE)
- 3500 100. 8 1/4" FENTON VINTAGE GRAPE I.C. SHAPED BOWL - CELESTE BLUE (EXTREMELY RARE ITEM; ABSOLUTELY BEAUTIFUL - ONE OF THE BEST!)
- 55 101. 8 3/4" Fenton Peacock Tail Deep Flared Master Berry Bowl - Green (excellent example w/ bright irid.)
- 75 102. 8 1/4" Fenton Persian Medallion Bowl w/ 3 in 1 Edge - Amyth. (scarce base color; nice color & irid.)
- 50 103. 8 1/4" Fenton Dragon & Lotus Bowl w/ 3 in 1 Edge - Amyth. (scarce; nice color)
- 105 104. 9" Fenton Ribbon Tie Low Plate w/ 3 in 1 Edge - Blue (very scarce; nice bright satiny finish)
- 4000 105. 9 3/8" FENTON PETER RABBIT FLAT PLATE - BLUE (EXTREMELY RARE & VERY DESIRABLE; PERFECT W/ EXCELLENT DETAIL & IRID. - A SUPER ITEM)
- 700 106. 9" FENTON DRAGON & STRAWBERRY I.C. SHAPED BOWL - ELEC. BLUE (RARE & VERY DESIRABLE; BLUE HIGHLIGHTS & GREAT DETAIL)
- 215 107. 8 3/4" Fenton Dragon & Strawberry I.C. Shaped Bowl - Dk. Mari. (very scarce & desirable; nice color & irid.; nice)
- 350 108. 10 1/2 TALL FENTON FINE RIB STANDARD SWUNG VASE - RED (RARE & DESIRABLE; BRIGHT COLOR & SATINY FINISH)
- 300 109. 5 1/2" FENTON STIPPLED RAYS DEEP ROUND SAUCE - RED (VERY SCARCE; BRIGHT RED COLOR & IRID.; NICE)
- 750 110. 6 3/4" FENTON HORSEHEAD MEDALLION FTD. FLARED NUT BOWL - RED SLAG (RARE & VERY DESIRABLE; TYPICAL SLAG EFFECT & SATINY IRID.; REALLY TOUGH)
- 950 111. 8 3/8 " FENTON ORANGE TREE I.C. SHAPED BOWL - RED (VERY RARE; GREAT COLOR & STRONG SATIN FINISH)
- 1000 112. 8 5/8" FENTON PEACOCK & GRAPE I.C. SHAPED BOWL - RED (VERY RARE; STRONG RED TO AMBERINA W/ AN EXCELLENT SATINY FINISH)
- 850 113. 8" FENTON DRAGON & LOTUS I.C. SHAPED BOWL - RED W/ OPAL. TIPS (RARE & DESIRABLE; GREAT BASE COLOR W/ THE SLIGHTEST HIT OF OPAL. ON THE EDGE, GOLD HIGHLIGHTS)
- 200 114. 6 1/2" FENTON G&C DEEP ROUND BOWL - RED / AMBERINA (RARE & DESIRABLE; BRIGHT FINISH)
- 300 115. 9" FENTON HOLLY 8 RUFFLED BOWL - RED (RARE & VERY DESIRABLE; GREAT BASE COLOR W/ A NICE SATINY FINISH)
- 350 116. 9 3/4" FENTON LITTLE FLOWERS LG. 8 RUFFLED BOWL - RED / AMBERINA (RARE & VERY DESIRABLE; SATINY & NICE)
- 400 117. FENTON PERSIAN MEDALLION 2 HANDLED 2 SIDED BON BON - RED (RARE & DESIRABLE; NICE COLOR & IRID.)
- 475 118. 6" FENTON LOTUS & POINSETTIA FTD. 6 RUFFLED SAUCE - REVERSE AMBERINA (RARE & VERY DESIRABLE; SATINY IRID. & NICE BASE COLOR)
- 525 119. FENTON HOLLY STEMMED 6 RUFFLED COMPOTE - RED (RARE & DESIRABLE; SUPER EXAMPLE W/ GREAT COLOR)
- 1000 120. IMPERIAL LUSTRE ROSE 7 PC WATER SET - PURP. (ABSOLUTELY FANTASTIC SET; ALL ITEMS PERFECT W/ ELEC. IRID. - 1 TUMBLER MORE OF A BRIGHT YELLOW IRID.)
- 1300 121. IMPERIAL POPPY SHOW VASE - SMOKE VERY RARE AND DESIRABLE; NICE BASE COLOR AND IRID.; HAS A BUBBLE NEAR BASE)
- 185 122. Imperial Loganberry Vase - Mari. (very scarce item; dark satiny finish)
- 255 123. IMPERIAL STRETCH DOUBLE SCROLL 3 PC. CONSOLE SET - TEAL (ACTUALLY QUITE A RARE COLOR FOR THIS SET)
- 285 124. 8" TALL IMPERIAL STRETCH SMALL SWUNG VASE - RED (A CUTIE! BRIGHT RED, GREAT IRID.)
- 12,000 125. M'BURG CLEVELAND MEMORIAL ASH TRAY - AMY. (AN ABSOLUTELY BEAUTIFUL RARIETY; PERFECT WITH EXCELLENT COLOR AND IRID. - REAL NICE DETAIL - SUPER!)
- 750 126. 7 1/2" M'BURG LETTERED COURTHOUSE 6 RUFFLED BOWL - AMY. (RADIUM & RARE; SUPER IRID. WITH GREAT DETAIL)
- 235 127. 10" M'burg Hanging Cherries Lg. I.C. Bowl - Green (very scarce; really nice satiny finish)

- 215 128. 10" M'burg Hanging Cherries Lg. I.C. Bowl - Amyth. (very scarce; really nice satiny finish)
- 75 129. M'burg Peacock Tail Variant 6 Ruffled Compote - Amyth. (satiny finish)
- 100 129A. M'burg Peacock Tail Variant 6 Ruffled Compote - Green (very attractive gold radium finish)
- 5500 130. **M'BURG DOLPHIN LG. ROUND FTD. COMPOTE W/ ROSILAND INT. - GREEN (VERY RARE; PERFECT W/ EXCELLENT COLOR & IRID.)**
- 460 131. **M'BURG HOBNAIL SPITTOON - AMYTH. (RARE & DESIRABLE; RADIUM & NICE)**
- 325 132. **M'BURG SWIRL HOBNAIL SPITTOON - MARI. (RARE & DESIRABLE; NICE SATINY LOOK)**
- 125 133. 5 1/2" M'burg Peacock Deep Flared Sauce - Amyth. (radium w/ blue highlights; nice)
- 120 134. 5 1/4" M'burg Peacock Deep Flared Sauce - Amyth. (radium & very scarce)
- 1000 135. **9" M'BURG PEACOCK LG. I.C. BOWL - AMYTH. (VERY RARE & DESIRABLE W/ EXCELLENT RADIUM; IRID. - REALLY ATTRACTIVE)**
- 275 136. 9 1/2" M'BURG PEACOCK LG. 6 RUFFLED BOWL - AMYTH. (RADIUM & VERY DESIRABLE; SUPER FINISH & DETAIL)
- 450 137. 9 1/2" M'BURG MANY STARS 6 POINTED BOWL W/ 3 IN 1 EDGE - MARI. (RADIUM; AVERAGE COLOR W/ GREAT RADIUM FINISH)
- 350 138. 6 3/8" X 6 1/2" M'BURG TROUT & FLY 4 SIDED SQUARE BOWL - AMYTH. (RARE & VERY DESIRABLE SHAPE; SPOTTY SATINY FINISH)
- 500 139. 8 1/2" M'BURG TROUT & FLY I.C. SHAPED BOWL - AMYTH. (RARE DESIRABLE; SATINY & ATTRACTIVE)
- 205 140. 9" M'burg Trout & Fly Bowl w/ 3 in 1 Edge - Green (very scarce; has a satiny gold finish)
- 265 141. 9" M'burg Trout & Fly 6 Ruffled Bowl - Mari. (very scarce; a nice satiny finish)
- 255 142. **CAMBRIDGE INVERTED STRAWBERRY COVERED POWDER JAR - GREEN (SCARCE W/ EXCELLENT IRID.; NICE)**
- 215 143. Cambridge Inverted Feather Covered Cracker Jar - Green (another item w/ excellent color & irid.)
- 30 144. Cambridge Inverted Feather Stemmed 6 Ruffled Compote - Mari. (nice color)
- 2250 145. **M'BURG HOBSTAR & FEATHER 10 PC. FLARED MASTER PUNCH SET - MARI. (VERY RARE SET; COMPLETE W/ NICE COLOR; HAS MANUF. CHECK IN BOWL THAT DOES NOT GO THROUGH)**
- 50 146. M'burg Hobstar & Feather Stemmed Rose Bowl - Purp. (an "AS IS" item; damaged around stem)
- 20 147. M'burg Country Kitchen Butter lid only - Purp. (rare & beautiful lid) *clips*
- 25 148. M'burg Hanging Cherries Butter lid only - Mari. (satiny; a scarce part)
- 15 149. M'burg Hobnail Sugar lid only - Mari. (rare part; where's the base?)
- 400 150. **M'BURG MORNING GLORY TUMBLER - GREEN (A VERY RARE ITEM EVEN W/ A HAIRLINE ACROSS THE BASE-EVEN THOUGH - IT'S SUPER!)**
- 350 151. 8 3/4" M'burg Trout & Fly Bowl w/ 3 in 1 Edge - Mari. (very scarce w/ a nice satiny finish)
- 285 152. M'burg Seacoast Pin Tray - Amyth. (rare item w/ great color & irid.; chips under base rim)
- 90 153. **6 3/4" M'BURG HOLLY SPRIG 6 RUFFLED CRIMPED EDGE BOWL - GREEN (SUPER RADIUM EXAMPLE W/ A NEAT SHAPE)**
- 25 154. Westmoreland Concave Flute Rose Bowl - Dk. Mari. (scarce; nice dark color)
- 550 155. **9 1/2" FENTON ORANGE TREE W/ TRUNK FLAT PLATE - BLUE / ELEC. BLUE (RARE & VERY DESIRABLE; REALLY SUPER IRID.)**
- 65 156. 9" Fenton Feather Stitch 8 Ruffled Bowl - Blue (scarce pattern w/ a satiny finish)
- 45 157. 10" Fenton Vintage Grape Lg. 8 Ruffled Bowl - Green (scarce color for this item; nice)
- 35 158. 8 1/4" Fenton Dragon & Lotus Spatula ftd. I.C. Shaped Bowl - Amyth. (scarce & attractive; bright irid.) *
- 17 1/2 159. Fenton Blackberry Spray 6 Ruffled Hat - Mari.
- 65 160. **FENTON BLACKBERRY SPRAY 2 SIDED HAT - GREEN (VERY SCARCE BASE COLOR; AN EXCELLENT EXAMPLE)**
- 70 161. 10 5/8" Tall Fenton April Showers Swung Vase - Blue (nice example)
- 30 162. 8" Tall Fenton Three Diamond & Bows Swung Vase - Blue (scarce; satiny) *
- 30 163. 9 1/2" Tall Fenton Rustic Standard Swung Vase w/ T.C.E. - Mari. (nice color)
- 40 164. 5 1/2" Tall Fenton Boggy Bayou Squatty Swung Vase - Mari.
- 425 165. **FENTON TWO ROW OPEN EDGE 6 RUFFLED HAT - PASTEL AQUA (A VERY UNUSUAL COLOR & LOOK; I HAVEN'T SEEN MANY LIKE IT.)**
- 175 166. **FENTON TWO ROW OPEN EDGE 4 SIDED HAT - WHITE (VERY SCARCE & DESIRABLE; FROSTY W/ EXCELLENT IRID.)**
- 45 167. Fenton Two Row Open Edge J.I.P. Hat - Mari. / Vaseline (nice base color & overlay)
- 35 168. Fenton Blackberry Lg. size Two Row Open Edge 2 sided Hat - Mari.
- 45 169. **FENTON BLACKBERRY LG. SIZE TWO ROW OPEN EDGE 6 RUFFLED HAT - AMYTH. (SCARCE COLOR W/ BRIGHT IRID.)**
- 55 170. **FENTON BLACKBERRY LG. SIZE TWO ROW OPEN EDGE 6 RUFFLED HAT - GREEN (ANOTHER SCARCE ITEM W/ NICE IRID.)**
- 10 171. 4 1/2" X 6" Fenton Persian Medallion 4 sided Square Sauce - Mari. (very scarce shape for this item)
- 7 1/2 172. Fenton Flowering Dill 6 Ruffled Hat - Blue (excellent irid.) *
- 15 173. Fenton Holly Crimped Edge J.I.P. Hat - Mari.
- 135 174. **6 7/8" U.S. GLASS COSMOS & CANE 8 RUFFLED BOWL W/ HEADRESS INT. - WHITE (VERY SCARCE ITEM W/ THIS INTERIOR PATTERN-GREAT FROSTY IRID.)**
- 145 175. **DUGAN GRAPEVINE LATTICE J.I.P. HAT - WHITE (RARE & DESIRABLE ITEM W/ EXCELLENT FROSTY IRID.)**
- 50 176. 3 1/2" Tall X 5" Diam. Dugan Vining Twigs 8 Ruffled Hat w/ Daisy Int. - White (scarce; nice & frosty)
- 50 177. 3 3/4" Tall X 5 1/2" Diam. Dugan Vining Twigs 8 Ruffled Hat w/ Daisy Int. - Pastel Mari. (attractive & nice)
- 10 178. **DUGAN CIRCLE SCROLL J.I.P. HAT - DK. MARI. (VERY SCARCE; NICE COLOR & IRID.)**
- 25 179. 6" Dugan Ski Star 6 Ruffled Sauce w/ Compass Ext. - P. Opal. (nice opal.)
- 275 180. **6 1/2" DUGAN CHERRIES FLARED CRIMPED EDGE PLATE - PURP. (VERY SCARCE ITEM W/ EXCELLENT IRID.)**
- 435 181. **DUGAN PERSIAN GARDEN RUFFLED FRUIT BOWL BASE (OR VASE OR HAT) - PURP. (ABSOLUTELY FANTASTIC; THE BEST IRIDIZED ITEM IN THE AUCTION)**
- 150 182. Dugan Persian Garden Ruffled Fruit Bowl Base only (or Hat) - White (very scarce; nice & frosty)
- 25 183. Odd Hobnail Patterned Perfume Atomizer - Lt. Mari.
- 10 184. U.S. Glass Heart Band Handled Creamer - Lt. Mari. (etched-souvenir of Toronto)
- 300 185. **10 1/2" N G&C LG. I.C. BOWL W. BASKETWEAVE EXT. - GREEN (RARE & DESIRABLE; TOUGH COLOR-ATTRACTIVE)**
- 175 186. **6 1/4" N G&C HANDGRIP PLATE W/ BASKETWEAVE EXT. - GREEN (PROBABLY ONE OF THE BEST EXAMPLES THERE IS)**

- 20 187. 3 3/4" Tall N G&C 8 Ruffled Hat Shape - Green - Scarce; satiny)
- 115 188. 6 1/6" N G&C 6 RUFFLED IND. BERRY BOWL W. BASKETWEAVE EXT. -ELEC.BLUE (SUPER BLUE IRID.;REALLY NICE ITEM)
- 105 189. N GRAPE ARBOR 6 RUFFLED HAT SHAPE - ELEC. BLUE RARE & DESIRABLE; GREAT BASE COLOR & IRID.)
- 265 190. N PEACOCK 8 RUFFLED BOWL W/ RIBBED EXT. - DK. MARI. (VERY SCARCE; DARK W/ EXCELLENT IRID.)
- 85 191. N Peacock at the Urn ind. Ice Cream Bowl - White (scarce item; frosty w/ average irid.)
- 145 192. N G&C 2 HANDLED 4 SIDED BON BON W/ BASKETWEAVE EXT. - WHITE (RARE & DESIRABLE; FROSTY W/ GOLD HIGHLIGHTS)
- 27 1/2 193. 10 3/4" Tall N Thin Rib Standard Swung Vase - Green (nice color & irid.)
- 50 194. Pr. 8 1/2" Tall N'wood Stretch 6 Panelled Candlesticks - Russet Green (scarce; attractive pair)
- 150 195. 15 3/4" TALL X 4" BASE X 6" FLARE IMPERIAL RIPPLE SWUNG FUNERAL VASE - LT. AMYTH. (NOW THIS IS DIFFERENT; LIGHTER BASE COLOR & IRID. - REALLY NICE)
- 30 196. 8" Tall Imperial Octagon ftd. Flared Vase - Dk. Mari. (very scarce; perfect; color lighter at the base)
- 12 1/2 197. Imperial Grape Stemmed Goblet - Dk. Mari. (nice color)
- 12 1/2 198. Pr. Imperial Interior Rays Breakfast Sugar & Creamer - Dk. Mari.
- 12 1/2 199. 8" Imperial Crab Claw Deep Round Bowl - Lime Green (odd base color) *
- 120 200. 8" IMPERIAL HEAVY GRAPE FLAT PLATE - PURP. (SCARCE & VERY DESIRABLE; TYPICAL SUPER IRID.)
- 45 201. 5 3/4" Imperial Embossed Scroll 8 Ruffled Sauce w/ File Ext. - Purp. (super example w/ super blue highlights)
- 17 1/2 202. Pr. 8" Tall Imperial Double Scroll Candlesticks - Mari
- 30, 25 203. 11" & 9" Imperial Ribbed J.I.P. Vases - Dk. Mari. (great color & irid.-selling choice)
- 45 204. 8" Imperial Twisted Ribbed J.I.P. Vase - Dk. Mari. (nice dark color)
- 25 205. 5" Tall X 4" Diam. Imperial Miniature Morning Glory Swung Vase - Dk. Mari. (nice color)
- 22 1/2 x 6 206. (6) Imperial Ribbed Lamps Shades - Mari. (selling so much each for set; nice)
- 25 x 2 207. (2) Misc. Imperial Lamp Shades - Mari. (selling so much each)
- 25 208. Signed NuArt Fishscale Lamp Shade - Mari. (nice item)
- 37 1/2 209. Figural Flame Lamp Shade - White (scarce)
- 65 210. CZECH FOREST SCENE HANGING DOME HALL SHADE - MARI. (VERY SCARCE; NICE DECOR.)
- 30 x 2, 20 211. (3) Misc. Czech Scenic Shades - (2) Mari. (1) Decor. (all a bit different scene; one not irid. selling choice)
- 7 1/2 x 3 212. (3) Misc. Acid Etched Shades - (2) White (1) Amber (amber not irid.; selling so much each)
- 5 213. Jenkins Field Thistle Spooner - Dk. Mari. (scarce item; great color; some chips on high spots)
- 100 214. FENTON DAISY CUT HANDLED DINNER BELL - MARI. (RARE & VERY DESIRABLE; PERFECT & NICE)
- 1400 215. FENTON 1911 B.P.O.E. ELKS ATLANTIC CITY HANDLED DINNER BELL - BLUE (VERY RARE & VERY DESIRABLE; TOUGH TO FIND; HAS A FLARE)
- 2200 216. FENTON 1914 B.P.O.E. ELKS PARKERSBURG HANDLED DINNER BELL - BLUE (RARE & VERY DESIRABLE; A SUPER EXAMPLE)
- 1100 217. 7 1/4" FENTON 1911 B.P.O.E. ELKS ATLANTIC CITY FLAT PLATE - BLUE (RARE & VERY DESIRABLE; SUPER BRIGHT SATINY FINISH)
- 1800 218. 7 3/4" FENTON 1914 B.P.O.E. ELKS PARKERSBURG FLAT PLATE - BLUE (SUPER EXAMPLE W/ EXCELLENT IRID.; NICE)
- 750 219. 6 1/2" FENTON 1910 B.P.O.E. ELKS DETROIT ICE CREAM SHAPED - AMYTH. (RARE & VERY DESIRABLE; SATINY W/ EXCELLENT DETAIL)
- 1100 220. 6 1/2" FENTON 1911 B.P.O.E. ELKS ATLANTIC CITY ICE CREAM SHAPED BOWL - BLUE (RARE & AN EXCELLENT EXAMPLE; SUPER IRID.)
- 1100 221. 7" FENTON 1910 B.P.O.E. ELKS DETROIT 6 RUFFLED BOWL - GREEN (RARE COLOR; NICE DETAIL W/ NICE SATINY IRID.)
- 750 222. 6 3/4" FENTON 1910 B.P.O.E. ELKS DETROIT 6 RUFFLED BOWL - AMYTH. (RARE & DESIRABLE; TOUGH COLOR; SATINY)
- 175 223. 8 3/4" Fenton Peacock at the Urn 6 Ruffled Bowl - Blue (really nice example; has Elec. Blue highlights)
- 300 224. 6" ISSAC BENESCH 6 RUFFLED ADVERTISING BOWL - AMYTH. (VERY SCARCE & VERY DESIRABLE; NICE DETAIL & IRID.)
- 3000 225. 9 1/4" FENTON 1911 "BIRMINGHAM AGE HERALD-CARRIERS GREETINGS" FLAT PLATE - AMYTH. (AN EXCELLENT EXAMPLE W/ A BEAUTIFUL BRIGHT SATINY FINISH; ONE OF THE BETTER EXAMPLES)
- 1500 226. 8 3/4" FENTON 1911 "BIRMINGHAM AGE HERALD SEASON'S GREETINGS" 6 RUFFLED BOWL - AMYTH. (RARE & VERY DESIRABLE TOUGH ITEM W/ A NICE SATINY FINISH)
- 2700 227. 7 3/4" FENTON "ILLINOIS SOLDIERS' & SAILORS' HOME - QUINCY, ILL" PLATE - BLUE (VERY RARE & VERY DESIRABLE; SUPER BRIGHT IRID.; REALLY NICE)
- 1800 228. 8" FENTON "ILLINOIS SOLDIERS' & SAILORS' HOME - QUINCY, ILL" FLAT PLATE - DK. MARI. (VERY RARE & VERY DESIRABLE; A SUPER EXAMPLE)
- 1000 229. 6 1/4" FENTON GARDEN MUMS W/ "UTAH LIQUOR CO. - LEWIS 66 RYE - PHONE 478 - 223 S. MAIN ST." 2 SIDED ADVERTISING HAND GRIP PLATE - AMYTH. (RARE & VERY DESIRABLE; TOUGH TO FIND AND AN EXCELLENT SATINY FINISH)
- 1250 230. 9 1/2" FENTON HEART & VINE PLATE W/ "COMPLIMENTS OF SPECTOR'S DEPARTMENT STORE" ADV. - DK. MARI. (RARE & VERY DESIRABLE; DARK COLOR & NICE DETAIL)
- 600 231. 8 1/4" FENTON TWO ROW OPEN EDGE BLACKBERRY FLAT PLATE - DK. MARI. (RARE & VERY DESIRABLE; GREAT COLOR & IRID.; HAS DAMAGE ON ONE LATTICE)
- 165 232. 9 1/4" Fenton Peacock at the Urn Flat Plate - Mari. (scarce w/ nice irid.)
- 95 233. 9 3/4" Fenton Holly Flared Plate - Mari. (scarce w/ satiny finish)
- 95 234. 6 1/2" Fenton Pine Cone Plate w/ Plain Ext. - Blue (scarce & very attractive; nice example)
- 85 235. 6 8" FENTON VINTAGE GRAPE FLARED PLATE - AMYTH. (VERY SCARCE; NICE SATINY FINISH) 175
- 10 x 4 236. (4) Fenton Lattice & Grape Tumblers - Blue (selling choice - odd irid.)
- 30 237. Fenton Wide Panel Breakfast Creamer - (Blank for Orange Tree Pattern) - Mari. (never seen this Blank before; pretty neat!)
- 15 x 3 238. (3) Fenton Wreath of Roses Punch Cups w/ Vintage Grape Int. - Amyth. (really nice example; selling so much each)
- 17 1/2 239. Fenton Orange Tree Handled Punch Cup - Mari.

- 150 240. **FENTON ORANGE TREE RUFFLED PUNCH TOP - WHITE (VERY SCARCE ITEM; GREAT FROSTY COLOR & IRID.; PERFECT!)**
- 25x3 241. (3) Fenton Orange Tree Handled Punch Cups - White (scarce; frosty; selling choice)
- 55 242. 7 1/4" Fenton Stretch low Cupped in Bowl - Red (nice color & stretch irid.)
- 170 243. 7 1/2" Fenton Acorn low 8 Ruffled Bowl - Aqua -(really nice color & irid.; scarce)
- 25 244. Fenton 2 Row Open Edge 4 side Square Hat - odd Blue / Mari. (odd base color; has check in edge)
- 375 245. **6 1/4" DUGAN PETAL & FAN CRIMPED EDGE PLATE - PURP. (VERY SCARCE & VERY ATTRACTIVE; A SUPER EXAMPLE)**
- 35 246. 6 1/2" Dugan Persian Garden Plate w/ Bskt. Ext. -Mari. (satiny w/ nice detail)
- 85 247. **7" DUGAN PERSIAN GARDEN FLAT PLATE W/ BSKT. EXT. -WHITE (FLAT W/ EXCELLENT IRID. - REALLY NICE)**
- 75x3 248. (3) 7" Dugan Persian Garden Flat Plates w/ Pool of Pearls Ext. - White (all perfect & all nice - all different - selling choice)
- 100 249. **6 3/8" DUGAN FOUR FLOWERS FLAT PLATE W/ PLAIN EXT. - P. OPAL. (VERY SCARCE; SUPER OPAL.; NICE OVERLAY)**
- 65x3 250. (3) 6 1/2" - 5/8" Dugan Four Flowers Flat Plate w/ Bskt. Ext. - P. Opal. (selling choice; opal on edge)
- 185 251. **8 7/8" DUGAN APPLE BLOSSOM TWIG FLAT PLATE W/ BSKT. EXT. - BLUE (VERY SCARCE W/ AN ATTRACTIVE SILVERY FINISH)**
- 25 252. 8 1/4" Dugan Pony 6 Ruffled Bowl - Dk. Mari. (has a radium finish; small chip on edge)
- 15 253. Dugan Many Fruits Handled Punch Cup - Purp. (a super example w/ excellent irid.)
- 80 254. Dugan Beaded Shell Tumbler - Blue (very scarce color)
- 30 255. **DUGAN CIRCLE SCROLL TUMBLER - PURP. (RARE & VERY DESIRABLE ITEM; HAS A NICE SATINY FINISH)**
- 135 256. **5" TALL X 5 1/2" FLARE DUGAN LINED LATTICE SQUATTY FLARED VASE - DK. MARI. (ACTUALLY QUITE A SCARCE ITEM; A BEAUTY!)**
- 40 257. 10" Tall Dugan Wide Panel Swung Vase -P. Opal. (nice Opal.) *Diamond & Daisy cut*
- 55 258. Jenkins Mayflower Handled Water Pitcher - Dk. Mari. (scarce; dark) *
- 20 259. **U.S. GLASS PALM BEACH TUMBLER - WHITE (FROSTY & VERY DESIRABLE; NICE IRID.)**
- 225 260. **U.S. GLASS PALM BEACH WATER PITCHER - WHITE (RARE & VERY DESIRABLE; FROSTY W/ EXCELLENT IRID.)**
- 50 261. U.S. Glass Palm Beach Water Pitcher - Honey Amber (another very scarce item; has an epoxy spot on base)
- 10 262. (2) U.S. Glass Palm Beach Water Tumblers - Honey Amber (very scarce; nice irid.; selling choice)
- 127 263. Imperial Start File Tumbler - Dk. Mari. (nice dark color)
- 2 1/2 x 12 264. (13) Imperial Broken Arches Handled Punch Cups - Dk. Mari. (that's right...13 of them; selling so much each)
- 125 265. **11" IMPERIAL HEAVY GRAPE CHOP PLATE - AMBER (RARE & VERY DESIRABLE; GREAT BASE COLOR; NICE IRID.)**
- 75 266. **9" IMPERIAL OPEN ROSE FLAT PLATE - AMBER (VERY SCARCE; NICE BASE COLOR & IRID.)**
- 45 267. 9" Imperial Open Rose Flat Plate - Pastel Mari. (odd base color; really bright & nice)
- 145 268. 9 1/2" Imperial Open Rose Flat Plate - Dk. Mari. (nice color & irid.; the flattest plate I've ever seen)
- 55 269. Imperial Windmill Lg. Handled Water Pitcher - Mari. (nice color & size)
- 45, 35 270. (3) Imperial Flute Toothpick Holders - Purp. (all have nice irid.; selling choice)
- 20 271. Imperial Flute Toothpick Holder - Lt. Amyth. (rare color but chipped on base)
- 40
- 10 *Stretch Bowl console*
- 10, 5 272. (2) Imperial Flute Toothpick Holders - Dk. Mari. (nice color)
- 17 1/2, 10 273. (2) N Oriental Poppy Tumblers - Dk. Mari. (nice examples; selling choice)
- 45 274. (2) N Dandelion Tumblers - odd Amyth. (odd satiny finish; selling choice) *look at*
- 170 275. **9 3/4" N ROSE SHOW FLARED PLATE - ODD AMYTH. (RARE & DESIRABLE; ODD TINT & IRID.; HAS SMALL CHIP ON ROSE)**
- 160 276. 9 1/2" N. Rose Show Flat Plate - Dk. Mari. (really nice example; super color; epoxy spot on one rose)
- 105 277. 9" N Rose Show 8 Ruffled Bowl - Aqua Opal. (cracked but an excellent shelf piece)
- 235 278. 9" N Three Fruits Stippled Plate w/ Ribbed Ext. - Purp. (another excellent example; has flake between two points)
- 55 279. 9" N Three Fruits Stippled Plate w/ Ribbed Ext. - Dk. Mari. (nice example; chip on one point)
- 275 280. N Peacock at the Fountain Ruffled Punch Bowl & Base - White (definitely "AS IS"; base is perfect)
- 75 281. N Drapery Tri-Cornered Candy Dish - Ice Blue (scarce color; irid. is light)
- 10 282. **N DRAPERY TRI-CORNERED CANDY DISH - WHITE (PERFECT W/ NICE FROSTY IRID.)**
- 50 283. N Nippon Plate w/ Basketweave Ext. - Green (super example; has small chip on one point & chip in middle design)
- 85 284. N Peach Tumbler - Blue (nice blue highlights)
- 200 285. **N BEADED CABLE FTD. RUFFLED ROSE BOWL - AQUA OPAL. (AN EXCELLENT BUTTERSCOTCH EXAMPLE; VERY ATTRACTIVE W/ NICE IRID.)**
- 250 286. **N BEADED CABLE FTD. RUFFLED ROSE BOWL - AQUA OPAL. (AN ATTRACTIVE PASTEL EXAMPLE W/ NICE IRID.)**
- 100 287. Pair 8 1/2" N'wood Stretch "Florentine" Style Candlesticks - Vaseline (super pair w/ that great Vaseline look!)
- 215 288. **9 1/4" TALL N THIN RIB STANDARD J.I.P. VASE - GREEN (RARE VARIATION; NICE SATINY FINISH)**
- 115 289. N Daisy & Drapery ftd. Turned in Vase - White (scarce & desirable; frosty w/ nice irid.)
- 2500 290. **9 1/4" THREE FRUITS STIPPLED PLATE W/ RIBBED EXT. - AQUA OPAL. (SUPER PASTEL EXAMPLE; VERY ATTRACTIVE; HAS SLIGHT WEAR ON FRUIT)**
- 450 291. 8 3/4" N THREE FRUITS STIPPLED FLARED PLATE - PURP. (VERY SCARCE & VERY DESIRABLE - NICE BRIGHT HIGHLIGHTS)
- 225 292. 8 5/8" N THREE FRUITS STIPPLED FLARED PLATE W/ RIBBED EXT. - DK. MARI. (SUPER EXAMPLE - A BEAUTY)
- 90 293. 7 3/4" N Fruit & Flowers 2 sided Banana Dish w/ Basketweave Ext. - Purp. (scarce & desirable; satiny)
- 145 294. **9" N THREE FRUITS PLATE W/ PLAIN EXT. - PURP. (VERY SCARCE W/ EXCELLENT IRID.; NICE)**
- 1285 295. **9" N STRAWBERRY STIPPLED PLATE W/ RIBBED EXT. - DK. MARI. (RARE & VERY DESIRABLE; SUPER EXAMPLE NOT OFTEN SOLD)**
- 35 296. N Poppy Oval Ruffled Relish Tray w/ Ribbed Ext. - Blue (scarce w/ nice bright irid.)
- 375 297. 8 7/8" N EMBROIDERED MUMS 8 RUFFLED BOWL W/ RIBBED EXT. - ELEC. BLUE (RARE & DESIRABLE; NICE COLOR & BRIGHT IRID.)
- 250 298. 8 3/4" N EMBROIDERED MUMS 8 RUFFLED BOWL W/ RIBBED EXT. - DK. MARI. (RARE & VERY DESIRABLE; GREAT COLOR & IRID.)
- 900 299. **N SINGING BIRD HANDLED MUG - AQUA OPAL. (RARE & VERY DESIRABLE; PERFECT W/ SUPER PASTEL OPAL.)**
- Blue Fluffy Peacock*

- 2300 300. 10 1/8" N PEACOCK AT THE URN ALL OVER STIPPLED LG. ICE CREAM BOWL - RENNINGER BLUE (EXTREMELY RARE BASE COLOR - NOT OFTEN SOLD; ONE OF THE BETTER EXAMPLES)
- 750 301. 9 3/4" N PEACOCK AT THE URN LG. ICE CREAM BOWL - ELEC. BLUE (VERY RARE & VERY DESIRABLE W/ SUPER BLUE HIGHLIGHTS)
- 1800 302. N PEACOCK AT THE URN 7 PC. ICE CREAM SET - ICE GREEN (RARE & DESIRABLE; EXCELLENT COLOR AND IRID. - NOT SURE HOW I'M GOING TO SELL IT)
- 1500 303. N PEACOCK AT THE URN 5 PC. ICE CREAM SET - ICE BLUE (RARE & DESIRABLE; EXCELLENT COLOR AND IRID. - NOT SURE HOW I'M GOING TO SELL IT)
- 1050 304. N PEACOCK AT THE URN 7 PC. ICE CREAM SET - WHITE (VERY SCARCE & DESIRABLE; NICE COLOR AND IRID. - NOT SURE HOW I'M GOING TO SELL IT)
- 750 305. N PEACOCK AT THE URN 7 PC. ICE CREAM SET - AMYTH. (VERY SCARCE & DESIRABLE; NICE COLOR AND IRID. - NOT SURE HOW I'M GOING TO SELL IT)
- 225 306. 8 3/4" N NIPPON BOWL W/ P.C.E. & BASKETWEAVE EXT. - ICE BLUE (NICE COLOR; SCARCE W/ THIS EXTERIOR PATTERN)
- 950 307. 6 1/2" N "FERN BRAND CHOCOLATES" 2 SIDED CARD TRAY W/ BASKETWEAVE EXT. - AMYTH. (RARE & VERY DESIRABLE; GREAT COLOR & DETAIL)
- 325 308. N G&C SMALL PIN TRAY - GREEN (VERY SCARCE IN THIS COLOR; REALLY NICE)
- 260 309. N G&C ftd. Hatpin Holder - Dk. Green (scarce; odd bright green w/ a dark finish)
- 1000 310. 8 5/8" N LATTICE & POINSETTIA FTD. 8 RUFFLED BOWL - AQUA W/ OPAL TIPS (EXTREMELY RARE; AQUA BASE, MARI. OVERLAY W/ OPAL TIPS; ONLY A FEW KNOWN)
- 350 311. N BEADED CABLE FTD. RUFFLED ROSE BOWL - ICE BLUE (RARE W/ GREAT DARK COLOR & IRID.)
- 250 312. N BEADED CABLE FTD. RUFFLED ROSE BOWL - WHITE (VERY SCARCE & VERY DESIRABLE; REALLY NICE)
- 300 313. N BEADED CABLE FTD. RUFFLED ROSE BOWL - AQUA OPAL. (RARE & VERY DESIRABLE; NICE OPAL. & IRID.)
- 175 314. N Beaded Cable ftd. Ruffled Rose Bowl - Green (a really nice dark base color w/ nice irid.)
- 70 315. N Beaded Cable ftd. Ruffled Rose Bowl - Purp. (dark base color w/ nice satiny irid.)
- 50 316. N Beaded Cable ftd. Ruffled Rose Bowl - Dk. Mari. (really nice color & irid.)
- 95 317. N Beaded Cable ftd. Ruffled Rose Bowl w/ Rayed Int. - Amyth. (average satiny irid.)
- 500 318. N HEARTS & FLOWERS STEMMED 6 RUFFLED COMPOTE W/ PLAIN EXT. - ICE BLUE (RARE & DESIRABLE; LIGHTER COLOR W/ NICE IRID.)
- 175 319. N Hearts & Flowers Stemmed 6 Ruffled Compote w/ Ribbed Ext. - Blue (very scarce & desirable; silvery highlights)
- 950 320. 9 1/8" N HEARTS & FLOWERS FLAT PLATE W/ RIBBED EXT. - PURP. (RARE & VERY DESIRABLE; DARK COLOR W/ EXCELLENT IRID.)
- 750 321. 8 3/4" N HEARTS & FLOWERS 8 RUFFLED BOWL W/ RIBBED EXT. - DK. MARI. (SUPER EXAMPLE; GREAT COLOR W/ SUPER SATINY IRID.)
- 175 322. 8 3/4" N HEARTS & FLOWERS 8 RUFFLED BOWL W/ RIBBED EXT. - WHITE (FROSTY & VERY SCARCE; NICE)
- 775 323. N PEACOCKS 8 RUFFLED BOWL W/ RIBBED EXT. - AQUA OPAL. (RARE & VERY DESIRABLE; GREAT OPAL. IRID.)
- 445 324. 8 7/8" N PEACOCKS STIPPLED PLATE W/ RIBBED EXT. & NON-IRIDIZED NARROW BASE - DK. MARI. (RARE VARIATION; DARK COLOR W/ YELLOW & GREEN HIGHLIGHTS)
- 4000 325. 8 3/4" N GOOD LUCK 8 RUFFLED BOWL W/ RIBBED EXT. - ICE BLUE OPAL. (EXTREMELY RARE PASTEL ITEM; DEF. MORE BLUE OPAL.)
- 650 326. 9 1/4" N GOOD LUCK PLATE W/ BASKETWEAVE EXT. - GREEN (HAS REALLY BRIGHT IRID. FOR THIS VARIATION)
- 375 327. 9 1/4" N GOOD LUCK PLATE W/ BASKETWEAVE EXT. - PURP. (RARE & VERY DESIRABLE; BRIGHT SATINY IRID.)
- 450 328. 8 7/8" N G&C VARIANT FLARED PLATE W/ RIBBED EXT. & "OLD ROSE DISTILLERY" ADVERTISING - EMERALD GREEN (RARE & DESIRABLE W/ SUPER BRIGHT IRID.)
- 2000 329. N APPLE BLOSSOM ENAMELED DECOR. 7 PC. WATER SET - BLUE (EXTREMELY RARE SET; HAVEN'T SEEN OR SOLD VERY MANY - PERFECT!)
- 175 330. 8 3/4" N GOOD LUCK 8 RUFFLED BOWL W/ BASKETWEAVE EXT. - PURP. (VERY SCARCE W/ NICE DARK SATINY FINISH)
- 165 331. 8 3/4" N Wishbone 8 Ruffled Bowl w/ Ruffles & Rings Ext. - Amyth. (really nice example w/ bright satiny irid.)
- 45 332. N Dandelion Tumbler - Dk. Purp. (absolutely super)
- 20 333. N G&C Tumbler - Purp. (nice color)
- 50 334. 8 7/8" N G&C ftd. Flared Plate w/ Meander Ext. - Purp. (has silvery irid.)
- 75 335. N G&C 6 Ruffled Hat Shape from Tumbler - Purp. (nice color & irid.)
- 30 336. 8 3/4" N Grape Leaves 8 Ruffled Bowl w/ Pansy Ext. - Mari. (nice satiny irid.)
- 35 337. 10" Tall N Tree Trunk Standard Swung Vase - Dk. Mari. - (really nice dark color & irid.)
- 25 338. 6" N Fruit & Flowers 6 Ruffled ind. Berry Bowl w/ Bskt. Ext. -Purp.
- 45 339. 8 7/8" N Three Fruits Stippled 8 Ruffled Bowl w/ Ribbed Ext. - Blue (really nice shelf item; one point chipped off)
- 55 340. 9 1/8" N Three Fruits Plate w/ Basketweave Ext. - Purp. (scarce; nice color; a bit of wear)
- 55 341. 8 5/8" N Three Fruits Bowl w/ P.C.E. & Basketweave Ext. - Mari. (really nice satiny finish)
342. 7 1/4" Dugan Fishscale 6 Ruffled Crimped Edge Bowl - P. Opal. (nice opal.)
- 115 343. 6" Tall Dugan Thin Rib Spittoon Shaped Pinched In Vase - P. Opal. (nice opal & scarce shape)
- 45 344. 8 1/2" Dugan Paneled Cherries ftd. Flared Bowl w/ T.C.E. - P. Opal. (scarce shape; nice opal.)
- 220 345. 6 1/4" DUGAN CHERRIES LOW 8 RUFFLED SAUCE W/ J.H. EXT. - PURP. (ABSOLUTELY SUPER BRIGHT IRID. - A REAL INEXPENSIVE KEEPER)
- 115 346. 7 3/8" Dugan Fishscale 6 Ruffled Crimped Edge Bowl - Purp. (nice irid.; an excellent example)
- 20 347. Dugan Windflower Tri-Cornered Handled Gravy Boat - Mari. (nice color)
- 40 348. 10 3/4" Tall Imperial Beaded Bullseye Swung Vase - Dk. Mari. (nice dark color & irid.)
- 10 349. Imperial Thumbprint & Oval 6 Ruffled Vase - Dk. Mari. (damaged; cracked but a nice shelf piece)
- 375 350. IMPERIAL POPPY SHOW VASE - DK. MARI. (RARE & DESIRABLE; NICE DARK COLOR)

- 170 351. 16 1/2" TALL X 4 7/8" BASE X 8" FLARE IMPERIAL MORNING GLORY SWUNG FUNERAL VASE - DK. MARI. (VERY DESIRABLE; DARK W/ EXCELLENT COLOR & IRID.)
- 560 352. Imperial Crackle (Soda Gold) Spittoon - Lime Green / Mari. (rare base color for this novelty item)
- 60 353. 9" Imperial Open Rose Flat Plate - Green (scarce; odd tint to base color)
- 15 354. Fenton Flowering Dill Crimped Edge J.I.P. Hat - Mari.
- 125 355. 9" FENTON DRAGON & LOTUS 8 RUFFLED BOWL - GREEN (REALLY NICE ITEM W/ A SORTA RADIUM FINISH)
- 70 356. 8 1/2" Fenton Dragon & Lotus I.C. Shaped Bowl - Blue (nice color & irid.)
- 90 357. 7" Fenton Peacock & Dahlia 6 Ruffled Bowl - Blue (scarce; tough to find & attractive)
- 70 358. 8 3/8" Fenton Captive Rose 8 Ruffled Bowl w/ C.R.E. - Blue (really nice looking item; nice irid.)
- 37 1/2 359. Fenton Captive Rose 2 Handled 4 sided Bon Bon - Blue (scarce)
- 90 360. 9" Fenton Holly 8 Ruffled Bowl - Green (scarce; has a dark satiny finish)
- 70 361. 9" Fenton Holly Bowl w/ 3 in 1 Edge - Blue (satiny; nice)
362. 9 1/4" Fenton Holly 6 Ruffled Bowl - Amyth. (nice color; average irid.)
363. 9 1/4" Tall Fenton April Showers Swung Vase - Green (nice color & irid.)
364. 10" TALL FENTON RUSTIC STANDARD SWUNG VASE - WHITE (SCARCE; FROSTY W/ REALLY NICE IRID.)
365. 8 1/2" Fenton Wild Blackberry Bowl w/ 3 in 1 Edge - Mari. (very scarce pattern; average color)
366. Fenton Orange Tree Lg. ftd. Ruffled Fruit Bowl - Dk. Mari. (nice dark color & irid.)
367. 7" Tall Fenton Three Diamonds & Bows Swung Vase - Blue (scarce)
368. 14 1/2" Tall Fenton Diamond Point Columns mid-size Swung Vase - Dk. Mari. (nice color & irid.)
369. 9" Fenton G&C Spatula ftd. Plate - Blue (scarce; satiny)
370. FENTON TWO ROW OPEN EDGE 6 RUFFLED HAT - DK. MARI. / VASELINE (SCARCE; REALLY NICE BASE COLOR)
371. Fenton Two Row Open Edge 2 sided Hat - Mari.
372. 7 1/4" Fenton Blackberry 2 Row Open Edge Lg. 2 sided Hat - Blue (really nice example; attractive)
373. 6" Fenton Pine Cone 6 Ruffled Sauce w/ Wide Panel Ext. - Blue (very nice example; pretty)
374. Fenton Miniature Blackberry Stemmed I.C. Shaped Compote - Blue (perfect; satiny)
375. 7 5/8" FENTON ACORN LOW 8 RUFFLED BOWL - ODD AMBER-GREEN (ODD BASE COLOR - LOOKS AMBER, LOOKS GREENISH - LOOKS VASELINEY)
376. 8" Fenton Autumn Acorn I.C. Shaped Bowl - Amyth. (satiny; nice)
377. Fenton Blackberry Spray 4 sided Hat - Aqua (scarce base color)
378. Fenton Pepper Plant 8 Paneled Exterior 6 Ruffled Hat - Green (odd item)
379. 8" Fenton Peacock & Grape Spatula ftd. 8 Ruffled Bowl - Amyth. (nice color)
380. Fenton Persian Medallion 2 Handled 4 sided Bon Bon - Green (very scarce, nice)
381. Fenton Cherry Circles Lg. 2 sided 2 Handled Bon Bon - Blue (scarce; nice irid.)
382. 8" Fenton Thistle Bowl w/ 3 in 1 Edge - Green (satiny)

NOTES



Lot #290



Lot #310



Lot #323



Lot #301



Lot #229



Lot #299



Lot #245



Lot #145



Lot #255



Lot #329



Lot #51



Lot #65



Lot #217



Lot #219



Lot #220



Lot #218



Lot #202



Lot #221



Lot #222



Lot #228



Lot #111



Lot #115



Lot #116



Lot #112

Burns Auction Service

P.O. Box 608
Bath, New York 14810

2004 Great Lakes Convention Auction!

First Class
US Postage
PAID
Permit No. 7
Hammondsport, NY

LEE MARKLEY
BOX 306
MENTONE IN 46539



Lots #215 & 216