



Lot #210



Lot #50



Lot #30



Lots #20, 19, 21



Lot #160



Lot #65

BURNS

AUCTION SERVICE

2004 Mid Atlantic Carnival Glass Jamboree Auction

Friday, October 22, 2004

(preview 4 -6:30; Auction 6:30 p.m.; Lots 1 - 125)

Saturday, October 23, 2004

(preview 8 - 9 a.m.; Auction 8:00 a.m.; Lots 126 - end)

at the **Venice Inn**

431 Dual Highway (Rte. 40), Hagerstown, MD 21740

1-800-283-6423

Once again it's time for two things - Get your rakes out and attend the Mid Atlantic Carnival Glass Jamboree!

We have a really nice affordable selection which includes glass from Ohio, New York, Canada and some salvaged from the storms in Florida. The auction will take place in two parts: Friday evening and Saturday, morning. The Jamboree features many other activities as well.

The Venice Inn of Hagerstown will host the event. It's located on Dual Highway (Rte. 40) and as most know, has hosted this event in the past.

For further info you can call Bill & Sharon Mizell at (301) 384-8952. For info on the motel call them direct at 1-800-283-6423

And, as always, if we can be of assistance in any way please contact us at Burns Auction Service.

Mail, phone & email bids due by Thursday, October 21, 2004

Burns Auction Service
email: brnzauctsv@aol.com

Tom Burns
P.O. Box 608
Bath, New York 14810
(607) 776-7942 Cell: (607) 731-9302

Bill Richards
44 Water Street, Poland OH 44514
(330) 757-2001
FAX (330) 757-4917

Bill Richards III
2253 Country Lane
Poland, OH 44514
(330) 755-2620 Cell: (330) 717-4985

Mail Bids honored under the following conditions:

1. No deposit required. Bidders will take full responsibility to honor any and all bids we execute for them. Payment in full plus postage and handling required after notification and before we ship any item to them.
2. Items are bid on in perfect condition with average or above average iridescence OR as listed in the brochures. Bids will not be carried out when damage on an item has been found during the auction. **PEOPLE PRESENT AT THE AUCTION ARE RESPONSIBLE FOR FINDING ANY PINHEADS, WEAR, SPOTTINESS, MANUFACTURER'S DEFECTS OR ANY OTHER MINOR FLAWS, ETC.**
3. Successful bidders will be notified by collect call from the auctioneer **SO BE SURE TO INCLUDE PHONE NUMBER.**
4. Phone inquiries about the glass or any other questions are welcome.
5. If you have some other person at the auction bidding for you, they must pay for the item before taking it.
6. Any terms or conditions given the day of the auction will supersede any previously published information.
7. Mail, e-mail, fax and phone bids are due by Thursday, Oct. 21, 2004

For photos of just about every item in every auction visit our website at:

<http://www.woodsland.com/burnsauction/>

1. N G & C Powder Jar Base only - Mari.
2. M'burg Palm Wreath Celery Vase - Crystal (scarce)
3. Dugan Persian Garden Ruffled Fruit Bowl base only - Mari. (scarce part)
4. Unsigned Hansen "Michigan" Toothpick Holder - Green (scarce; attractive)
5. **FENTON STRETCH 2PC. HANDLED GUEST SET - ICE GREEN / COBALT HANDLE (RARE AND VERY DESIRABLE; PERFECT & NICE)**
6. 10" Fenton Stretch Thin Rib Domed Turned in Center Bowl - Velva Rose (scarce; nice)
7. Dugan / Diamond Stretch Heart Handled Cookie Tray - Celeste Blue (very scarce item; nice color)
8. **FENTON FLOWERS FTD. ROSE BOWL - AMBERINA (DAMAGED - CRACKED W/ DAMAGED FOOT; RARE)**
9. **DUGAN VENETIAN LINE HONEYCOMB ROSE BOWL - CASED CRANBERRY SPATTER W/ OPAL. (VERY RARE COLOR COMBINATION; NICE COLOR W/ SUPER OPAL.)**
10. **N BEADED CABLE FTD. RUFFLED ROSE BOWL - ICE BLUE (RARE AND VERY DESIRABLE; GREAT COLOR & NICE IRID.)**
11. N Drapery Rose Bowl - Non Carnival - Blue Opal. (very scarce; tough to find w/ nice opal.)
12. **N ROSE SHOW RUFFLED BOWL - NON CARNIVAL - BLUE OPAL. (VERY SCARCE; NICE COLOR & OPAL.)**
13. 7 1/2" Fenton Pine Cone 6 Ruffled Bowl - Green (scarce size & color; satiny irid.)
14. 11" Tall Imperial Ripple Standard Swung Vase - Pur. (small flake on edge; nice color & irid.)
15. **IMPERIAL PANSY FLAT DRESSER TRAY - PUR. (ABSOLUTELY SUPER COLOR W/ GREAT IRID.; FLAT & FANTASTIC - REALLY NICE!)**
16. Rooster Hatpin / Brooch Pin - Red / Decor. (Red Hatpin in a Brooch Frame; really different)
17. (3) Misc. Hatpins incl. Rooster & Big Butterfly - Rooster - Lavender; Big Butterfly - Dark (scarce; selling choice)
18. 12 1/2" Tall Fenton Fine Rib Swung Vase - Odd Pastel Lime Green / Mari. (very unusual base color - really nice green shade w/ a Mari. overlay).
19. (2) 10 1/2" - 11" Fenton Rustic Standard Swung Vases - Ruby (very scarce pair; selling choice - not carnival)
20. **21 3/8" TALL X 5 1/4" BASE X 8" FLARE FENTON RUSTIC SWUNG FUNERAL VASE - NON-IRIDIZED COBALT BLUE (FIRST I'VE EVER HEARD OF; RARE AND VERY DESIRABLE; NOT CARNIVAL)**
21. 19 7/8" Tall X 5 1/4" Base X 8 3/4" Flare Fenton Interior Wide Panel Swung Funeral Vase - Ruby (very scarce & desirable; great color)
22. 9" Fenton Orange Tree 6 Ruffled Bowl - Non-Iridized Cobalt Blue (very scarce item; non-iridized examples tough to find)
23. 9" Fenton Captive Rose low Flared Bowl / Plate w/ Berry Exterior - Green (rare & unusual item in shape & variation)
24. **9" FENTON DRAGON & LOTUS 8 RUFFLED BOWL - AMBER (RARE BASE COLOR; DARK & ATTRACTIVE; SATINY IRID.)**
25. **FENTON TWO FLOWERS LG. BALL FTD. GIANT ROSE BOWL - DK. MARI. (QUITE A RARE ITEM; THIS EXAMPLE IS DARK W/ GREAT IRID.)**
26. 5 3/4" Fenton Two Flowers 6 Ruffled 3 ftd. Sauce - Amy. (very scarce base color esp. in this size; nice irid.)
27. Fenton Rose Spray Stemmed Flared Goblet Shaped Compote - Mari. (satiny irid.)
28. 9 1/2" Australian Kookaburra Lg. 12 Ruffled Bowl - Pur. (very scarce w/ really attractive & bright irid.)

29. 9 1/4" Australian Kookaburra Lg. 12 Ruffled Bowl - Dk. Mari. (another scarce item w/ nice color & irid.)
30. **N LATTICE & POINSETTIA 3 FTD. RUFFLED BOWL W/ RIBBED EXT. - ICE BLUE (VERY RARE & DESIRABLE; PERFECT W/ EXCELLENT BASE COLOR & IRID.)**
31. **N HEARTS & FLOWERS 8 RUFFLED BOWL W/ RIBBED EXT. - ICE BLUE (VERY SCARCE W/ GREAT BASE COLOR & IRID.)**
32. N Hearts & Flowers Stemmed Ruffled Compote w/ Ribbed Ext. - White (scarce, desirable w/ average irid.)
33. **6 3/4" TALL X 5" FLARE FENTON (?) FOUR PILLARS SQUATTY FLARED VASE W/ STARRED BASE - AMY. (RARE & DESIRABLE W/ A RADIUM STYLE FINISH-REALLY NICE)**
34. (2) N G & C Cologne Bottles & Stoppers - Dk. Mari. (very scarce w/ nice color & irid.; selling choice)
35. **N DANDELION TANKARD WATER PITCHER - LT. AMY. /MARI. (VERY SCARCE BASE COLOR W/ A MARI. OVERLAY - SORTA HORE-HOUND)**
36. **N DANDELION TANKARD WATER PITCHER W/ RIBBED INT. - DK. MARI. (VERY SCARCE & VERY DESIRABLE; DARK COLOR W/ EXCELLENT IRID.)**
37. (Fenton or N'wood?) Wide Panel Tankard Water Pitcher - Dk. Mari. (rare & unusual; dark color & very different!)
38. **6" X 5 7/8" M'BURG "MILKY WAY" 4 SIDED SQUARE BOWL - CLEAR OPAL. (RARE & VERY DESIRABLE; GREAT OPAL. & REALLY NICE)**
39. 7 3/8" X 7 1/2" M'burg Ohio Star 4 sided Square Bowl - Crystal (very scarce; nice condition).
40. **DUGAN GRAPEVINE LATTICE J.I.P. HAT FROM TUMBLER - WHITE (VERY RARE; FROSTY W/ EXCELLENT IRID.; REALLY TOUGH TO FIND)**
41. Jenkins Mayflower Handled Water Pitcher - Mari. (dark color)
42. **IMPERIAL JACOB'S LADDER ROSE BOWL - DK. MARI. (RARE & DESIRABLE; DARK COLOR W/ EXCELLENT IRID.)**
43. Imperial Fashion Lg. Rose Bowl - Mari. (scarce w/ a nice average irid. & color)
44. Imperial Star & File Rose Bowl - Dk. Mari. (nice color & irid.)
45. **IMPERIAL OPEN ROSE FLAT PLATE - PUR. (RARE & VERY DESIRABLE; FLAT W/ EXCELLENT COLOR & IRID; SMALL CHIP ON ROSE)**
46. **4 5/16" IMPERIAL CRAB CLAW IRID. ROUND SAUCE - BLUE (EXTREMELY RARE BASE COLOR; TOUGH TO FIND; HAS CHIP ON TOP EDGE)**
47. 6 3/8" Imperial Grape Flat Plate - Dk. Mari. (nice color & irid.)
48. Imperial Star & File Stemmed Champagne Glass - Dk. Mari. (scarce item; nice)
49. **N THREE FRUITS MEDALLION STIPPLED 8 RUFFLED SPATULA FTD. BOWL W/ MEANDER EXT. - AQUA OPAL. (RARE & VERY DESIRABLE; A SUPER PASTEL EXAMPLE W/ GREAT IRID.)**
50. **N ROSE SHOW 8 RUFFLED BOWL - LIME ICE GREEN (EXTREMELY RARE BASE COLOR; SUPER ATTRACTIVE; ONE RUFFLE NOT FILLED IN)**
51. N ROSE SHOW 8 RUFFLED BOWL - ICE GREEN (RARE & VERY DESIRABLE; NICE COLOR & IRID.; SMALL CHIP ON BASE)
52. N ROSE SHOW FLARED PLATE - BLUE (RARE & DESIRABLE; NICE IRID.; MAY HAVE ROUGH SPOT ON ONE ROSE)
53. N HEARTS & FLOWERS 8 RUFFLED BOWL W/ RIBBED EXT. - BLUE (VERY RARE COLOR FOR THIS PATTERN; NICE COLOR & IRID.)
54. N HEARTS & FLOWERS STEMMED 6 RUFFLED COMPOTE - AQUA OPAL. (A SUPER EXAMPLE W/ A BASE COLOR WANTING TO BE BLUE OPAL.; SUPER PASTEL W/ EXCELLENT IRID. - TINY DING ON BASE)
55. **N PEACOCKS 8 RUFFLED BOWL W/ RIBBED EXT. - AQUA OPAL. (SUPER PASTEL EXAMPLE W/ EXCELLENT OPAL. & IRID.; A VERY ATTRACTIVE PASTEL EXAMPLE)**
56. N EMBROIDERED MUMS 8 RUFFLED BOWL W/ RIBBED EXT. - ICE BLUE (VERY RARE AND DESIRABLE; NICE BASE COLOR & NICE IRID.)
57. N EMBROIDERED MUMS 8 RUFFLED BOWL W/ RIBBED EXT. - ICE GREEN (VERY RARE AND DESIRABLE; NICE BASE COLOR AND IRID.)
58. 9 1/2" N WISHBONE 8 RUFFLED BOWL W/ BASKETWEAVE EXT. - PUR. (ABSOLUTELY SUPER EXAMPLE; HAS TO BE ONE OF THE BEST THERE IS!!...A BEAUTY!!)
59. N THREE FRUITS STIPPLED 8 RUFFLED BOWL W/ RIBBED EXT. - BLUE (RARE AND DESIRABLE; NICE BASE COLOR & AVERAGE IRID.)
60. **N GOOD LUCK 8 RUFFLED BOWL W/ PLAIN EXT. - PUR. (A VERY RARE VARIATION W/O AN EXTERIOR PATTERN; THIS HAS SUPER FINISH & IRID. - NICE!!)**
61. **N GOOD LUCK 8 RUFFLED BOWL W/ RIBBED EXT. - BLUE (VERY SCARCE & VERY DESIRABLE; NICE IRID.)**
62. 9" Dugan Single Flower Exterior Bowl w/ 3 in 1 Edge & Enam. Floral Decor. - P. Opal. (scarce & desirable; nice shape w/ excellent decoration)
63. **N GREEK KEY TANKARD WATER PITCHER - PUP. (RARE AND VERY DESIRABLE; REALLY NICE COLOR & IRID.)**
64. N GREEK KEY TUMBLER - PUR. (VERY SCARCE ITEM W/ NICE IRID.)
65. **N RIBBED TORNADO STANDARD SIZE TRI-CORNERED VASE - DK. MARI. (SUPER EXAMPLE; DARK COLOR W/ EXCELLENT IRID.)**
66. FENTON FLORAL & GRAPE BULBOUS WATER PITCHER - BLUE (VERY DESIRABLE & ATTRACTIVE ITEM; SUPER IRID.)

- _____ 67. (4) Fenton Floral & Grape Tumblers - Blue (various styles of irid.; selling choice)
- _____ 68. N Round Handled Bushel Basket - Blue (very scarce & desirable w/ nice color)
- _____ 69. N Round Handled Bushel Basket - Mari. (scarce w/ nice color & irid.)
- _____ 70. **N HEARTS & FLOWERS STEMMED 6 RUFFLED COMPOTE W/ RIBBED EXT. - DK. MARI. (A SUPER EXAMPLE; DARK W/ EXCELLENT IRID.; NICE)**
- _____ 71. N G & C Handled 4 sided Bon Bon w/ Basketweave Ext. - Green (bright base color w/ excellent irid.; really nice)
- _____ 72. N G & C Handled 4 sided Bon Bon w/ Basketweave Ext. - Mari. (nice average color & irid.)
- _____ 73. N G & C Stippled Handled 4 sided Bon Bon w/ Basketweave Ext. - Blue (rare and very desirable; tough variation w/ nice color)
- _____ 74. N G & C Stippled Handled 4 sided Bon Bon w/ Basketweave Ext. - Dk. Mari. (very scarce w/ excellent irid.; nice).
- _____ 75. **N PEACOCKS PLATE W/ RIBBED EXT. - BLUE (RARE AND VERY DESIRABLE; NICE COLOR W/ REDDISH HIGHLIGHTS).**
- _____ 76. N G & C Banded Cologne Bottle & Stopper - Dk. Mari. (scarce; great color & excellent irid.)
- _____ 77. N G & C Breakfast Creamer- Mari. (scarce item).
- _____ 78. N Wishbone Deep 8 Ruffled Bowl w/ Ruffles & Rings Ext. - Mari. (cracked; satiny finish)
- _____ 79. N'wood 6 pc. Victorian Enameled Wine Set - Crystal Blue / Decor. (very unusual; not carnival but different)
- _____ 80. **N DANDELION HANDLED MUG - PUR. (RARE AND DESIRABLE; NICE COLOR & IRID.)**
- _____ 81. **PENSTAR HATPIN - DARK (VERY SCARCE W/ NICE BLUE IRID.)**
- _____ 82. **STAR CENTER LG. SIZE HATPIN - DARK (VERY SCARCE; NICE SIZE; BLUE IRID.)**
- _____ 83. **STAR CENTER HATPIN -DARK (VERY SCARCE W/ NICE BLUE IRID.)**
- _____ 84. **ELEGANCE HATPIN - DARK (VERY SCARCE W/ EXCELLENT BLUE IRID.)**
- _____ 85. **FIREFLIES HATPIN - DARK (VERY SCARCE W/ EXCELLENT BLUE IRID.)**
- _____ 86. 8 1/4" M/burg Grape Wreath Variant Bowl w/ 3 in 1 Edge - Amy. (scarce w/ super radium irid.)
- _____ 87. 8 1/4" M' burg Grape Wreath Variant Bowl w/ 3 in 1 Edge - Green (scarce w/ nice radium finish)
- _____ 88. 7" Cambridge Inverted Strawberry I. C. Shaped Bowl - Green
- _____ 89. Czech Castle Scene Shade on Gooseneck Lamp Base - Mari. (unusual item w/ nice decor.)
- _____ 90. **EUROPEAN RISING SUN HANDLED WATER PITCHER - DK. MARI. (RARE & DESIRABLE W/ NICE DARK SATINY FINISH)**
- _____ 91. **9" TALL JAIN HAND VASE - MARI. (VERY SCARCE W/ NICE COLOR)**
- _____ 92. 8 3/4" Tall Jain Elephant Vase - Mari. (scarce item)
- _____ 93. 9" Tall Jain Fish "Carp" Vase - Mari. (scarce item)
- _____ 94. 6" Tall Jain Diamond Heart Vase - Mari. (odd pattern; nice shape)
- _____ 95. **11 1/4" TALL DUGAN PULLED LOOP SWUNG VASE - PUR. (ATTRACTIVE ITEM W/ BRIGHT IRID.)**
- _____ 96. 10" Tall Dugan Pulled Loop Swung Vase - P. Opal. (nice color & opal.)
- _____ 97. 10 1/4" Tall Dugan Pulled Loop Swung Vase - Amy. (scarce variation).
- _____ 98. 10 1/4" Tall Dugan Big Basketweave Swung Vase - Mari.
- _____ 99. Dugan Vineyard Bulbous Water Pitcher - Mari.
- _____ 100. **9 14" EUROPEAN FOUR FLOWERS VARIANT LOW-RUFFLED BOWL - PUR. (SCARCE W/ A DARK SATINY FINISH)**
- _____ 101. Dugan Persian Garden Ruffled Fruit Bowl Top only - Mari. (scarce part w/ nice color & irid.)
- _____ 102. **DUGAN CONSTELLATION STEMMED 6 RUFFLED COMPOTE - MARI. (VERY SCARCE COLOR FOR THIS PATTERN)**
- _____ 103. 9 1/2" Tall Dugan Twigs Swung Bud Vase - Mari.
- _____ 104. Dugan Maple Leaf 7 pc. Water Set - Mari. (selling pitcher then tumblers choice)
- _____ 105. **FENTON HOLLY STEMMED 6 RUFFLED COMPOTE - RED (RARE & VERY DESIRABLE; GREAT COLOR - A REALLY NICE EXAMPLE)**
- _____ 106. Fenton Rose Spray Stemmed J.I.P. Compote - White (very scarce; pretty nice irid.)
- _____ 107. Fenton Stretch #400 4 sided Vase - Grecian Gold (scarce item; nice finish)
- _____ 108. **8" FENTON STRETCH CUPPED IN ROSE BOWL - RED (VERY SCARCE & VERY DESIRABLE; NICE SIZE & COLOR)**
- _____ 109. 7 1/2" Fenton Acorn Low 8 Ruffled Bowl - Blue (nice example)
- _____ 110. **9" FENTON PEACOCK & GRAPE 8 RUFFLED BOWL - ELEC. BLUE (VERY ATTRACTIVE ITEM W/ BRIGHT IRID.; REALLY NICE)**
- _____ 111. **FENTON 2 ROW OPEN EDGE J.I.P. HAT - GREEN (VERY SCARCE ITEM IN THIS COLOR; NICE)**
- _____ 112. Fenton 2 Row Open Edge J.I.P. Hat - Dk. Mari. / Vaseline (scarce w/ a darker overlay)
- _____ 113. Fenton 2 Row Open Edge J.I.P. Hat - Mari. / Vaseline (scarce w/ a light overlay)
- _____ 114. Fenton 2 Row Open Edge J.I.P. Hat - Mari.
- _____ 115. **FENTON STRETCH 6 PC. NUT SET - VASELINE (RARE SET; HAVE THE MASTER & 5 INDIVIDUALS - REALLY NICE SET)**
- _____ 116. Fenton Persian Medallion 2 Handled 4 sided Bon Bon - Mari. / Vaseline (very scarce & desirable color; has small flake on handle)
- _____ 117. Fenton Pepper Plant 6 Ruffled Hat w/ Manuf. Ground Base - Amy. (satiny).
- _____ 118. 6" Tall Fenton Diamond Point Columns Squatty Swung Vase - Mari.
- _____ 119. N'wood Stretch 3 pc. Console Set - Celeste Blue (scarce set w/ 8 1/2" Florentine Sticks)
- _____ 120. 13" Tall Imperial Freefold Swung Vase - Smoke (scarce color; nice irid.).
- _____ 121. 10 1/2" Tall Imperial Parlor Panels Swung Vase - Green (scarce & a pretty nice example)
- _____ 122. 6" Tall Imperial Ripple Miniature Swung Vase - Mari. (nice color)
- _____ 123. 7 1/4" Tall Imperial Ripple Miniature Swung Vase - Mari. (a bit lighter irid.)
- _____ 124. 8" Tall Imperial Miniature Morning Glory Swung Vase - Pastel Mari. (bright irid.)
- _____ 125. **8" IMPERIAL EMBOSSED SCROLL 8 RUFFLED BOWL W/ FILE EXT. - PUR. (VERY DESIRABLE W/ SUPER IRID.)**

START OF 2ND SESSION

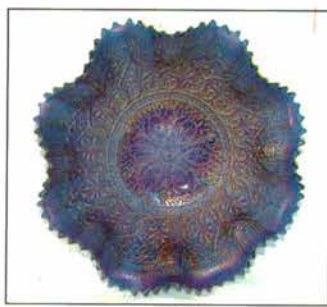
- _____ 126. Imperial Grape Decanter w/ new Stopper - Pur. (bright base)
- _____ 127. Imperial Grape Decanter w/ new Stopper - Green
- _____ 128. Imperial Grape Decanter & Stopper - Mari. (nice irid.)
- _____ 129. Imperial Star Medallion Small Size Tumbler - Mari.
- _____ 130. **5" TALL X 7" DIAM. IMPERIAL 474 STEMMED 8 RUFFLED COMPOTE - MARI. (ACTUALLY QUITE A TOUGH IMPERIAL ITEM TO FIND)**
- _____ 131. Imperial Frosted Block Rose Bowl - Clamb. (nice irid.)
- _____ 132. (maker???) Adams Rib Style ftd. Fan Vase - Mari. (you always see these in a Wall Pocket; tough)
- _____ 133. (maker???) Fenton Grecian Daisy 8 pc. Covered Water Set - Lt. Mari. (nice complete set)
- _____ 134. (4) Cards Carnival Glass Buttons - Dark (selling choice)
- _____ 135. 7" Imperial Brocaided Daffodil 2 Handled Nappy - Ice Green (scarce w/ nice irid.)
- _____ 136. 7" Imperial Brocaided Daffodil 2 Handled Plate - Pink (nice irid.)
- _____ 137. 2 3/4" Tall X 8 1/4" Imperial Summer Gardens Squatty Flat Compote - Clear / Irid. (scarce w/ super irid.)
- _____ 138. 7 1/2" Fostoria Brocaided Palms 2 Handled Round Nappy - Ice Green (nice irid.)
- _____ 139. 6 7/8" Fostoria Brocaided Palms 2 Handled Round Nappy - Pink (nice irid.)
- _____ 140. **8 1/2" TALL FOSTORIA BROCAIDED PALMS FTD. FAN VASE - PINK (NICE IRID.)**
- _____ 141. **8 3/4" FOSTORIA BROCAIDED ACORNS FTD. FAN VASE - ICE BLUE (RARE & ALSO VERY DESIRABLE; NICE COLOR & IRID.)**
- _____ 142. **8 1/4" TALL FOSTORIA BROCAIDED PALMS LG. PINCHED IN BULBOUS VASE - ICE GREEN (RARE ITEM; NICE SHAPE W/ NICE IRID.)**
- _____ 143. **8" TALL FOSTORIA BROCAIDED PALMS LG. PINCHED IN BULBOUS VASE - PINK (ANOTHER RARE ITEM W/ NICE IRID.)**
- _____ 144. **4 1/2" TALL X 6 3/8" DIAM. FOSTORIA BROCAIDED PALMS STEMMED ROUND COMPOTE - ICE GREEN (RARE ITEM W/ SUPER IRID.)**
- _____ 145. **4 1/2" TALL X 6 3/8" DIAM. FOSTORIA BROCAIDED PALMS STEMMED ROUND COMPOTE - PINK (RARE ITEM W/ SUPER IRID.)**
- _____ 146. 4 1/4 " Tall X 8 1/4" Long Fostoria Brocaided Palms ftd. Oblong Planter - Pink (rare item missing the Flower Frog; nice)
- _____ 147. 3 1/2" Tall X 7 1/4" Long Fostoria Brocaided Palms ftd. Oblong Planter - Pink (very scarce item but missing the Flower Frog)
- _____ 148. 12 1/4" Fostoria Brocaided Palms Handled Chop Plate - Ice Green (nice sized item w/ great irid.)
- _____ 149. 11" Fostoria Brocaided Palms Handled Deep Round Bowl - Pink (scarce item w/ nice irid.)
- _____ 150. **3 1/2" TALL FOSTORIA BROCAIDED PALMS HANDLED SUGAR BUCKET - PINK (VERY RARE MINIATURE ITEM W/ NICE IRID.)**
- _____ 151. **6" TALL FOSTORIA BROCAIDED PALM HANDLED ICE BUCKET - PINK (VERY SCARCE ITEM; NICE IRID.)**
- _____ 152. **PAIR 3" TALL X 4 1/2" BASE FOSTORIA BROCAIDED PALMS SQUATTY CANDLESTICKS - PINK (VERY SCARCE PAIR W/ SUPER IRID.)**
- _____ 153. **PAIR 1 1/2" TALL X 4 1/2" WIDE FOSTORIA BROCAIDED PALMS SQUATTY 3 FTD. CANDLESTICKS - PINK (VERY SCARCE PAIR; NICE COLOR & IRID.)**
- _____ 154. 2 1/4" Tall Fostoria Brocaided Acorn Single Domed Candlestick - Lavender (scarce item)
- _____ 155. **11 5/8" FOSTORIA BROCAIDED PALMS FLEUR DE LEI HANDLED COOKIE TRAY - PINK (SUPER ATTRACTIVE ITEM)**
- _____ 156. 6 7/8" Fostoria Brocaided Palms 2 Handled 2 sided Nappy - Pink (nice irid.)
- _____ 157. 8" Tall Imperial Wide Panel Swirl J.I.P. Vase - Smoke (scarce color for this item; super irid.)
- _____ 158. **SIGNED IMPERIAL IRON CROSS FLUTE & CANE HANDLED CUP & SAUCER - DK. MARI. (VERY RARE SET; DARK W/ GREAT COLOR)**
- _____ 159. 4 3/4" Tall Imperial Tulip Cane Stemmed Claret - Dk. Mari. (scarce item)
- _____ 160. **N PEACOCKS PLATE W/ RIBBED EXT. - WHITE (RARE AND DESIRABLE; HAS TO BE ONE OF THE BETTER EXAMPLES)**
- _____ 161. **N PEACOCK AT THE URN LG. ICE CREAM BOWL - MARI. (VERY SCARCE W/ NICE COLOR & IRID.)**
- _____ 162. **N WILD ROSE FTD. FLARED OPEN EDGE FTD. BOWL - ELEC. BLUE (RARE & VERY DESIRABLE BASE COLOR W/ BLUE HIGHLIGHTS)**
- _____ 163. N G & C Flared Handled Punch Cup Nappy Whimsey - Mari. (scarce w/ nice irid.)
- _____ 164. 9 1/2" N 4 Pillar Ribbed / Drapery Variant Swung Vase - Odd Blue / Mari. (very rare base color; has chip on base)
- _____ 165. 14 1/4" Tall X 4 3/4" Base X 6 1/2" Flared N Wide Panel Squatty Swung Funeral Vase - Green / Mari. (large, desirable item w/ nice color)
- _____ 166. **CAMBRIDGE INVERTED FEATHER COVERED CRACKER JAR - GREEN (VERY SCARCE; SUPER EXAMPLE W/ GREAT COLOR & IRID.)**
- _____ 167. 7 1/2" M'burg Blackberry Wreath 6 Ruffled Bowl - Green (super radium finish)
- _____ 168. 6" M'burg Blackberry Wreath 6 Ruffled Sauce - Mari. (radium; nice)
- _____ 169. Westmoreland Estate Breakfast Handled Sugar & Creamer - Lt. P. Opal. (very scarce pair; light color & opal.)
- _____ 170. **9 3/4" TALL DUGAN BIG BASKETWEAVE SWUNG VASE - AMY. (RARE & VERY DESIRABLE; NICE BASE COLOR W/ AN ODD TINT AND NICE IRID.)**
- _____ 171. 8 1/4" Dugan Six Petals 6 Ruffled Bowl - White (really nice frosty finish)
- _____ 172. Dugan Jeweled Heart Tumbler - Mari. (scarce w/ really nice color)
- _____ 173. (Maker???) Swirl Depression Era Handled Water Pitcher - Mari.
- _____ 174. Australian Center Bowl w/ Flower Frog - Pur. (unusual Float Bowl; some inside wear)

175. **EUROPEAN LITTLE HOBNAIL 4 PC. COR-DIAL SET - MARI. (SCARCE ITEMS TO A VERY DESIRABLE SET)**
176. European Buzz Saw Handled Water Pitcher - Mari. (very scarce; has really nice color)
177. Geometric Star Hatpin - Dark (unusual; nice)
178. 5 1/2" Fenton Lotus & Poinsettia ftd. Ruffled Sauce - Mari.
179. **FENTON KITTENS 4 SIDED BOWL - CRYSTAL (RARE NON-IRIDIZED ITEM; TOUGH TO FIND)**
180. **FENTON DAISY CUT DINNER BELL - MARI. (RARE AND DESIRABLE; PERFECT W/ NICE COLOR)**
181. 7 1/4" TALL FENTON APRIL SHOWERS SQUATTY SWUNG VASE - WHITE (RARE COLOR & SIZE; FROSTY W/ EXCELLENT IRID.)
182. **FENTON 2 ROW OPEN EDGE LG. SIZE 4 SIDED HAT - CELESTE BLUE (RARE & VERY DESIRABLE; HAS ONE CHECK IN EDGE)**
183. Fenton Wine & Roses Stemmed Goblet - Lt. Blue / Mari. (rare base color; very unusual)
184. **FENTON WREATH OF ROSES 7 PC. FLARED PUNCH SET W/ PER. MED. INT. - MARI. (VERY SCARCE & DESIRABLE SET; NICE)**
185. **IMPERIAL GRAPE WATER CARAFE - DK. MARI. (RARE & DESIRABLE; NICE DARK COLOR)**
186. 10 1/4" U.S. GLASS COSMOS & CANE LOW 8 RUFFLED BOWL - WHITE (VERY SCARCE; FROSTY W/ NICE IRID.)
187. 7 3/4" U.S. Glass Cosmos & Cane Deep Round Master Berry Bowl - White (very scarce; frosty w/ nice irid.)
188. Pr. 3 1/2" Tall X 4 1/4" Base Fenton Stretch Squatty Candlesticks - Celeste Blue (nice color)
189. Pr. 8 1/2" Tall Fenton Stretch Florentine Candlesticks - Celeste Blue (nice color)
190. **7 1/2" TALL N'WOOD STRETCH SWIRL MELON RIB FLARED FTD. VASE - CELESTE BLUE (VERY SCARCE ITEM W/ NICE COLOR; TOUGH)**
191. 9" Tall Fenton Stretch ftd. Fan Vase - Celeste Blue (nice color)
192. 5" Tall Fenton Stretch Melon Rib Small Fan Vase - Celeste Blue (nice color)
193. Fenton Stretch Ash Tray w/ Matchbox Holder - Celeste Blue (complete w/ box of matches; nice)
194. **FENTON STRETCH HANDLED CUP & SAUCER - CELESTE BLUE (RARE SET; NICE COLOR & IRID.)**
195. **FENTON INTERIOR DIAMOND QUILT PERFUME BOTTLE & STOPPER - CELESTE BLUE (RARE & VERY DESIRABLE; VERY DIFFICULT ITEM TO FIND)**
196. 5 1/4" Tall Fenton Interior Diamond Quilt ftd. Fan Vase - Velva Rose (very scarce variation; nice color)
197. 5 1/4" Tall Fenton Stretch Tankard Lemonade Glass - Velva Rose (scarce item)
198. 5" Tall U.S. Glass ftd. Flared Vase - White (frosty finish).
199. 7 1/4" Tall X 7" Diam Signed Imperial Iron Cross Wide Stretch Panel Stemmed Round Compote - White (scarce & signed).
200. **8" TALL X 7" FLARE FENTON STRETCH "SHEFFIELD" FLARED VASE - ICE BLUE (RARE & DESIRABLE ITEM; GREAT IRID.)**
201. 8" Tall Imperial Double Handled Stretch J.I.P. Vase - Smoke (very scarce w/ great color & irid.)
202. **6 3/4" X 3 1/2" U.S. GLASS PALM BEACH 2 SIDED BANANA BOAT WHIMSEY - LT. AMY. / GOLD (RARE & DESIRABLE NOVELTY; NICE GOLD DECOR.)**
203. 7 1/2" M'burg Little Stars 6 Ruffled Bowl - Green (very scarce w/ a nice satiny finish)
204. N Poppy Show Flat Plate - Green (rare & very desirable item; polished flake on back edge)
205. **9 3/4" N WISHBONE BOWL W/ P.C.E. & BASKETWEAVE EXT. - SMOKE (VERY RARE BASE COLOR; DIFFERENT W/ EXCELLENT IRID.)**
206. **9 3/4" N WISHBONE BOWL W/ P.C.E. & BASKETWEAVE EXT. - WHITE (VERY RARE; FROSTY W/ EXCELLENT IRID. & NICE)**
207. **N STRAWBERRY STIPPLED BOWL W/ P.C.E. & RIBBED EXT. - BLUE (RARE & DESIRABLE; BRIGHT COLOR W/ AVERAGE IRID.)**
208. N Peacocks Stippled Bowl w/ P.C.E. & Ribbed Ext. - Green (rare & different; has narrow base & 2 chips on face edge)
209. N Acorn Burr Handled Punch Cup - Pur. (silvery)
210. **N GOOD LUCK 8 RUFFLED BOWL W/ RIBBED EXT. - EMERALD GREEN (SUPER, SUPER EXAMPLE; GREAT BASE COLOR & EXCELLENT IRID. - ONE OF THE VERY BEST!)**
211. **N GOOD LUCK 8 RUFFLED BOWL W/ BASKETWEAVE EXT. - MARI. (VERY SCARCE W/ A NICE SATINY FINISH)**
212. N G & C Variant 8 Ruffled Bowl w/ Plain Ext. - Amy. (nice dark satiny finish)
213. N G & C Variant 8 Ruffled Bowl w/ Basketweave Ext. - Pur. (satiny finish)
214. 5" N G & C 6 Ruffled Sauce w/ Basketweave Ext. - Amy. (nice color & irid.)
215. 7 1/2" Tall N Tree Trunk Squatty Swung Vase - Mari. (nice item; sorta squatty)
216. N Raspberry Tumbler - Dk. Mari. (super color & irid.)
217. N Grape Leaves 8 Ruffled Bowl - Green (nice color & finish)
218. N Wishbone ftd. 8 Ruffled Bowl w/ Ruffles & Rings Ext. - Dk. Mari. (really nice example)
219. N Rosette ftd. 8 Ruffled Bowl - Mari. (nice color & irid.)
220. **11" TALL DUGAN SPIRALX SWUNG VASE - PUR. (VERY SCARCE & DESIRABLE; REALLY NICE)**
221. Dugan Grape Delight 6 ftd. Round Rose Bowl - Pur. (really nice irid.)
222. Dugan Grape Delight 6 ftd. Ruffled Rose Bowl - Blue (satiny finish)
223. Dugan Big Basketweave Handled Flower Basket - Mari.
224. 6 1/2" Dugan Persian Garden Flat Plate - Lt. Mari. (light example)
225. 8 1/4" Dugan Pony 6 Ruffled Bowl - Dk. Mari. (dark w/ a radium type irid.)
226. 8 1/4" Dugan Apple Blossom Twigs Ice Cream Shaped Bowl - Mari. (satiny finish)

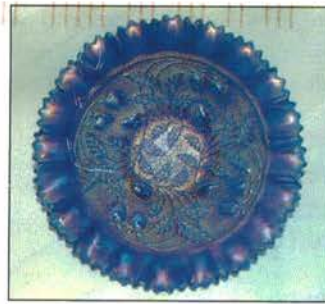
227. M'burg Peacock Tail Variant 6 Ruffled Compote - Amy. (scarce; satiny)
228. Pastel Swan Master Salt - Lime Ice Green (odd tint)
229. Pastel Swan Master Salt - Ice Green
230. Pastel Swan Master Salt - Celeste Blue
231. Pastel Swan Master Salt - Pink
232. I.G. Figural Turkey Covered Candy Dish - Pur. (newer item; scarce)
233. I.G. Figural Turkey Covered Candy Dish - Dk. Mari. (newer item; scarce)
234. Imperial Robin Handled Mug - Dk. Mari. (really nice example)
235. Imperial Windmill Handled Milk Pitcher - Dk. Mari. (nice color & detail)
236. 8 1/2" Tall Imperial Wide Panel Swirl J.I.P. Vase - Dk. Mari. (nice color & irid.)
237. 6" Tall Imperial Miniature Morning Glory Swung Vase - Dk. Mari. (odd wide flare; nice)
238. 5" Tall Imperial Miniature Morning Glory Swung Vase - Mari.
239. Imperial Grape Tumbler - Helios Green
240. Imperial Grape Stemmed Wine Glass - Green (nice color)
241. Fenton Orange Tree Stemmed Goblet - Dk. Mari. (really nice example)
242. Fenton Orange Tree Flared Standard Size Mug - Crystal Blue (very unusual being a non-carnival item)
243. Fenton Orange Tree Handled Shaving Mug - Blue (really nice example)
244. Fenton Orange Tree Handled Standard Size Mug - Dk. Mari. (a beaut!)
245. 8 1/2" Fenton Persian Medallion Bowl w/ 3 in 1 Edge - Blue (scarce; nice)
246. 9" Fenton Holly 8 Ruffled Bowl - Blue (satiny)
247. 9" Fenton Dragon & Lotus 8 Ruffled Bowl - Blue (irid. a bit spotty)
248. 6 1/2" Fenton Acorn Deep Round Bowl - Blue (nice color)
249. 10 3/4" Tall Fenton Wide Panel Swung Vase - Blue (satiny; scarce)
250. 8" Tall Fenton Long Thumbprint Swung Vase - Green (odd swing)
251. Fenton Peacock Tail Stemmed 2 Handled 4 sided Bon Bon - Green (satiny)
252. **FENTON CHERRY CIRCLES LG. 2 SIDED 2 HANDLED BON BON - LT. AMY. / MARI. (RARE BASE COLOR; ACTUALLY PINK - DIFFERENT)**
253. 9 1/4" Fenton Holly 6 Ruffled Bowl - Dk. Mari. (super color)
254. **FENTON KITTENS 2 SIDED BANANA DISH - MARI. (SCARCE; NICE ITEM)**
255. Fenton 2 Row Open Edge 2 sided Hat w/ John H. Brand Furniture Adv. - Mari. (scarce w/ nice color & irid.)
256. 8" Fenton Captive Rose Bowl w/ P.C.E. - Pastel Mari. (light, bright, irid.)
257. 12" Tall Fenton Stretch Swung Bud Vase - Mari.
258. 6 1/4" Fenton Sailboats 6 Ruffled Bowl - Mari.
259. 5 1/2" Fenton Feathered Serpent 6 Ruffled ind. Berry Bowl - Blue
260. **8 1/4" FENTON LITTLE FLOWERS FLARED MASTER BERRY BOWL - ELEC. BLUE (AN EXCELLENT EXAMPLE W/ BRIGHT MULTI-COLORED IRID.)**
261. 7 1/4" Fenton Vintage Grape Bowl w/ T.C.E. - Amy. (satiny)
262. 6 1/2" Fenton Pine Cone I.C. Shaped Bowl - Mari. (scarce; nice color & shape)
263. 8 3/4" Fenton Peacock at the Urn 8 Ruffled Bowl - Mari. (scarce; really nice color & detail)
264. 7 3/4" Fenton Stag & Holly I.C. Shaped Spatula ftd. Bowl - Dk. Mari. (super example w/ excellent color & irid.)
265. **FENTON 2 ROW OPEN EDGE 2 SIDED HAT - RED (RARE & DESIRABLE; NICE COLOR & SATINY IRID.)**
266. Fenton 2 Row Open Edge 2 sided Hat - Blue (satiny)
267. Fenton 2 Row Open Edge J.I.P. Hat - Blue (nice shape)
268. Fenton Persian Medallion Lg. Stemmed 6 Ruffled Compote w/ Crimped Edge - Blue (scarce; nice)
269. Fenton Persian Medallion Lg. Stemmed 6 Ruffled Compote w/ Crimped Edge - Mari. (scarce; nice color)
270. Fenton Scotch Thistle Stemmed 6 Ruffled Crimped Edge Compote - Blue (scarce pattern w/ nice color & irid.)
271. 7 3/4" Fenton G & C Ball ftd. 8 Ruffled Bowl - Green (nice color)
272. 7 1/4" Fenton Two Flowers Spatula ftd. Flared Bowl - Blue (super color & irid.)
273. 9" Fenton Dragon & Lotus 8 Ruffled Bowl - Blue (scarce w/ nice irid.)
274. 9" Fenton Holly Bowl w/ 3 in 1 Edge - Blue (nice color)
275. **9" FENTON HOLLY 8 RUFFLED BOWL - GREEN (SCARCE; SORTA ODD BASE COLOR)**
276. 9" N Three Fruits 8 Ruffled Bowl w/ Basketweave Ext. - Pur. (satiny finish)
277. **M'BURG BOUTIONERE STEMMED 6 RUFFLED COMPOTE - GREEN (RADIUM & VERY SCARCE; NICE COLOR)**
278. **8 3/4" DUGAN ROUND UP LOW 8 RUFFLED BOWL / PLATE - BLUE (VERY SCARCE & DESIRABLE; NICE SATINY FINISH)**
279. 9" Dugan Round Up Low 8 Ruffled Bowl / Plate - P. Opal. (very scarce; edge has manuf. flaw)
280. **DUGAN THUMBPRINT STEMMED 8 RUFFLED COMPOTE - BLUE (RARE BASE COLOR FOR THIS ITEM; SATINY FINISH)**
281. 9" Dugan Double Stem Rose Domed 10 Ruffled Bowl - White (scarce w/ super irid.; really nice)
282. 8 3/4" Dugan Weeping Cherries Domed 10 Ruffled Bowl - Mari. (very scarce pattern; nice color & irid.)
283. 8" Dugan Six Petals 6 Ruffled Bowl - Dk. P. Opal. (really nice example)
284. **12 1/2" TALL JENKINS FIELD THISTLE LG. SWUNG VASE - LT. MARI. (RARE ITEM; TYPICAL LIGHT COLOR; REALLY RARE SIZE)**
285. Imperial Pansy Oval Ruffled Relish Tray - Green (nice color)
286. 5 1/2" Imperial Windmill 8 Ruffled Sauce - Mari. (nice color)



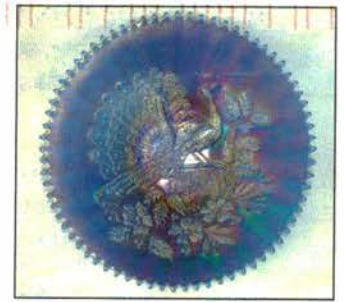
Lot #52



Lot #53



Lot #207



Lot #75



Lots #140 & 141



Lots #142 & 143



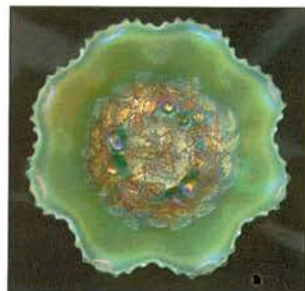
Lots #144 & 145



Lots #150 & 151



Lot #56



Lot #49



Lot #55



Lot #57

Burns Auction Service

P.O. Box 608
Bath, New York 14810

2004 Mid Atlantic Jamboree Auction!

First Class
US Postage
PAID
Permit No. 7
Hammondsport, NY



Lot #105

LEE MARKLEY
BOX 306
MENTONE IN 46539