

Carnival Glass **AUCTION**

Saturday, October 9th, 2004 -- 9:30 A.M.

Ruth and Cecil Herrington Collection



*Seeck Antique Auction Center
15564 300th St. (US Hwy 65 North)
Mason City, Iowa*

Jim and Jan Seeck

Seeck Auctions 641-424-1116



Carnival Glass Auction
SATURDAY, October 9th, 2004 -- 9:30 A.M.
Seek Antique Auction Center – Mason City, Iowa
(Preview: Friday, October 8th - 3 to 6 p.m.)
NO BUYERS PREMIUM



Seeck Auctions is pleased to be selling at auction the collection of Ruth and Cecil Herrington from California. Ruth and Cecil have put together a very nice collection with a variety of items over the past years. Would like to let everyone know that we are now accepting MasterCard and Visa for purchases at the auction and also for absentee bidding. Head up to Mason City this fall for a great auction!

Don't forget to check out our website for lots of pictures!
www.seeckauction.com

Also, please email us and we will put you on our email mailing list for auction notices.

Terms: Cash or Check, VISA and MasterCard accepted. **3% Clerking Fee** on all purchases except for payment of cash or check. Announcements made day of sale take precedence over any printed information. Lunch will be available.

ABSENTEE BID POLICY

1. Write-in bids will be accepted by sending the numbers of the item(s) desired and the amount bid on each to:
Seek Auctions, PO Box 377, Mason City, Iowa 50402.
2. If known by Auction Company, bids may be done over the telephone. (641)424-1116.
3. You may **email** your bids to us: **jimjan@seeckauction.com** Continue to include the numbers of the item(s) you would like to bid on and amount bid on each, please include your telephone number.
4. There is a \$5 handling charge for each successful bid. Shipping and insurance charges are additional.
5. Bidders will be notified by phone/email if their bid(s) are successful. This will be done 1 - 3 days after the auction.
6. Please have all bids in by **Thurs., Oct 7th**. All bids (by mail, phone or **email**) after this date may not be carried out.
7. Please place bids in the following increments: \$1 to \$300 - \$5 increments \$300 up - \$25 increments.
8. **If you do not receive an item that sold for less than your bid, assume we cancelled your bid because the piece of glass had below average color, manufacture problem, damage or was not listed correctly.**
9. Auction results are posted on our website within 5 days of the auction (depending on drive time home from the sale.) Also results are available in many of the club newsletters.

- | | |
|----------------------------------------------------------------------------------------------------------------------------------------------------------------------------------------------------------------------------------------------------------------------------------------------------------------------------------------------------------------------------------------------------------------------------------------------------------------------------------------------------------------------------------------------------------------------------------------------|----------------------------------------------------------------------------------------------------------------------------------------------------------------------------------------------------------------------------------------------------------------------------------------------------------------------------------------------------------------------------------------------------------------------------------------------------------------------------------------------------------------------------------------------------------------------------------------|
| <ul style="list-style-type: none"> ___ 1. Dugan Cherries ftd ruffled bowl - marigold ___ 2. Fan open sugar bowl - peach opal ___ 3. Weeping Cherries dome ftd ruffled bowl - marigold ___ 4. Right Hand 8" vase - marigold - by Jain ___ 5. N's Grape Leaves ruffled bowl - marigold ___ 6. Beaded Panels ruffled compote - clambroth ___ 7. Fern CRE JIP hatshape - marigold ___ 8. Six Petals ruffled bowl w/enameled decoration - peach opal ___ 9. Paneled Holly card tray shaped bon bon - green | <ul style="list-style-type: none"> <u>2150</u> 10. Imperial Grape 6" plate - blue - extremely rare plate, one of just a few known, pretty! ___ 11. Fan gravy boat - peach opal - nice ___ 12. Constellation compote - purple - very pretty, scarce ___ 13. Constellation compote - marigold - scarce, nice ___ 14. Constellation compote - white - also nice <u>1150</u> 15. M'burg Many Stars IC shaped bowl - green - radium & fantastic, has 6 pt star, highly desirable ___ 16. Daisy hldd basket - smoke |
|----------------------------------------------------------------------------------------------------------------------------------------------------------------------------------------------------------------------------------------------------------------------------------------------------------------------------------------------------------------------------------------------------------------------------------------------------------------------------------------------------------------------------------------------------------------------------------------------|----------------------------------------------------------------------------------------------------------------------------------------------------------------------------------------------------------------------------------------------------------------------------------------------------------------------------------------------------------------------------------------------------------------------------------------------------------------------------------------------------------------------------------------------------------------------------------------|

- _____ 17. **Petal & Fan large size ruffled bowl - white - super pretty, a dandy**
- _____ 18. Peacock & Grape spt ftd IC shaped bowl - marigold - nick on flange under foot
- 960 _____ 19. **Diamond Points 9 1/2" vase - aqua opal - very scarce, highly desirable, nice!**
- _____ 20. Diamond Points 9 1/2" vase - amethyst
- _____ 21. M'burg Primrose ruffled bowl - amethyst - satin & nice
- _____ 22. M'burg Primrose ruffled bowl - marigold - satin & nice
- _____ 23. **Thistle banana boat - amethyst - super pretty example, as nice as they get**
- _____ 24. Australian Butterfly & X-mas bells salver shaped compote - purple
- _____ 25. **Diamond & Sunburst 7 pc wine set - purple - very rare & pretty**
- _____ 26. Cherry Circles round shaped bon bon - marigold
- _____ 27. **N's Bushel Basket - aqua - very rare color, has no opal**
- _____ 28. N's Bushel Basket - ice green - scarce
- _____ 29. N's Bushel Basket - marigold - has pretty irid!
- 2700 _____ 30. **Christmas compote - purple - super pretty example, very rare & highly desirable, a classic**
- _____ 31. N's Butterfly bon bon - marigold
- _____ 32. Maple Leaf 6 pc. water set - purple - nice
- _____ 33. **Maple Leaf 4 pc. table set - blue - scarce color, nice**
- _____ 34. **Acorn IC shaped bowl - red - very pretty example, scarce**
- _____ 35. Acorn IC shaped bowl - aqua - scarce color, nice
- _____ 36. **Blossomtime ruffled compote - green - scarce, nice**
- _____ 37. **Blossomtime ruffled compote - purple - scarce & also pretty**
- _____ 38. **Blossomtime ruffled compote - marigold - great example**
- 1200 _____ 39. Birds & Cherries bon bon - marigold
- 1200 _____ 40. **Persian Garden chop plate - amethyst or lavender - very pretty example, extremely rare, great piece!**
- _____ 41. Persian Medallion 6" IC bowl - blue
- _____ 42. **Waterlily ftd ruffled sauce - red - scarce, highly desirable**
- 950 _____ 43. Vintage 10" 3 in 1 edge bowl - green
- 950 _____ 44. **Peacocks 9" plate w/ribbed back - ice blue - a little light in color, has pretty irid., very scarce**
- _____ 45. Peacocks 9" plate w/ribbed back - ice green - scarce
- _____ 46. Beads & Flowers 6" plate - peach opal - nice
- _____ 47. Little Fishes IC shaped ftd master berry bowl - blue - scarce
- _____ 48. Beaded Cable rose bowl - aqua opal - nice
- _____ 49. Beaded Cable rose bowl w/rayed interior - purple
- _____ 50. **Leaf Chain 7" ruffled bowl - red - very nice example, scarce**
- _____ 51. Fine Cut & Roses candy dish - ice blue - super pretty, has normal feet
- _____ 52. Fine Cut & Roses candy dish - white - large chip on feet
- _____ 53. Fine Cut & Roses candy dish - marigold - repair on feet
- _____ 54. Fine Cut & Roses candy dish - green
- _____ 55. **Fenton's Peacock at Urn 9" plate - white - scarce, nice**
- _____ 56. Fenton's Peacock at Urn 9" plate - marigold - large chip on edge
- _____ 57. Thistle 3 in 1 edge bowl - green
- _____ 58. Good Luck PCE bowl w/ribbed back - purple - super pretty irid.
- _____ 59. Good Luck PCE bowl w/BW back - marigold - silvery irid.
- _____ 60. Little Flowers master berry bowl - amethyst
- _____ 61. Little Flowers round sauces (4) - blue - choice
- _____ 62. **Fashion round shaped 8 pc. punch set - marigold - very rare in this unruffled shape, nice**
- _____ 63. Fashion ruffled 10 pc. punch set - marigold
- _____ 64. **Holly 9" plate - amethyst - scarce & very pretty**
- 725 _____ 65. **Holly 9" plate - black amethyst - pretty example**
- _____ 66. M'burg Blackberry Wreath 7" ruffled bowl - green - radium
- _____ 67. **Classic Arts small vase or tall tumbler - marigold - scarce, nice**
- _____ 68. Hobstar Flower ruffled compote - purple - super
- _____ 69. Double Dutch ftd round bowl - marigold - minor nick on one toe
- _____ 70. Four Flowers Variant 9" plate - sea foam green - odd, dark color
- _____ 71. File & Fan round compote - peach opal - couple small nicks on base

- ___ 72. **Stippled Strawberry PCE bowl w/BW back - green - very rare, highly desirable, minor pinpoint on base**
- ___ 73. Fine Cut & Roses rose bowl - ice blue - scarce, normal feet
- ___ 74. Fine Cut & Roses rose bowl - purple - very pretty, its feet look good
- ___ 75. **M'burg Diamonds 7 pc. water set - amethyst - super pretty set**
- ___ 76. Feathered Serpent 10" ruffled bowl - green
- ___ 77. M'burg Grape Wreath Variant IC shaped sauce - amethyst - radium & super
- ___ 78. Fenton's Grape & Cable fruit bowl w/Persian Medallion interior - marigold - nice
- ___ 79. Peacock & Grape ruffled bowls (2) - marigold - choice
- ___ 80. **Grape & Gothic Arches 4 pc. table set - marigold - super**
- ___ 81. Pansy ruffled bowls (2) - purple - choice
- ___ 82. **N's Peacock at Urn master IC bowl - purple - scarce & desirable**
- ___ 83. Hattie deep round bowl - marigold - crack in base
- ___ 84. Acorn Burrs spooner - green - scarce
- ___ 85. Acorn Burrs spooner - purple
- ___ 86. **Dandelion mug - aqua opal - light butterscotch, nice**
- ___ 87. Dandelion mug - marigold - scarce
- ___ 88. Grapevine Lattice ruffled bowl - white
- ___ 89. Plaid IC shaped bowl - blue - scarce
- ___ 90. Target 12" vase - peach opal
- 675 ___ 91. **Orange Tree 9" plate - blue - very pretty**
- ___ 92. Stag & Holly large size ftd ruffled bowl - marigold - nice
- ___ 93. Good Luck ruffled bowls w/BW back (2) - purple - both nice, choice
- ___ 94. **Butterfly & Fern water pitcher - marigold - light color**
- ___ 95. Grape & Cable Variant 9" plate w/BW back - purple
- ___ 96. Grape & Cable Variant 9" plate w/BW back - marigold - pretty
- ___ 97. Big Basketweave baskets (2) - marigold - choice
- ___ 98. **Horse Medallion ftd ruffled bowl - green - very scarce color**
- ___ 99. Fantail ftd berry bowl - marigold
- ___ 100. Blackberry Open Edge ruffled basket - aqua - light marigold overlay, very scarce, pretty
- ___ 101. Blackberry Open Edge ruffled basket - marigold
- ___ 102. Fisherman's mug - purple
- ___ 103. **Ski Star large size ruffled bowl - purple - exceptional quality, a real beauty**
- ___ 104. Poinsettia milk pitcher - marigold
- ___ 105. Inverted Feather cracker jar - green - scarce
- ___ 106. Wild Strawberry 6" ruffled sauce - marigold
- ___ 107. **Wishbone 9" ftd plate - purple - very scare, nice**
- ___ 108. M'burg Blackberry Wreath 8" IC shaped bowl - green - satin
- ___ 109. **Dragon & Lotus ruffled bowl - vaseline - marigold overlay, scarce & nice**
- ___ 110. N's Wild Rose ftd bowl - marigold - super
- ___ 111. **Raspberry milk pitcher - green - scarce**
- ___ 112. Waffleblock punch bowl & base - marigold
- ___ 113. Holly ruffled hatshape - red - scarce
- ___ 114. Holly ruffled hatshape - marigold
- 1100 ___ 115. **Mikado round shape compote - blue - very scarce & highly desirable**
- ___ 116. Mikado ruffled compote - marigold
- ___ 117. **Chrysanthemum Sprig 4 pc. table set - blue custard w/gold decoration - super rare set, not carnival**
- ___ 118. **Chrysanthemum Sprig 7 pc. berry set - blue custard w/gold decoration - not carnival, very rare**
- ___ 119. Chrysanthemum Sprig compote - blue custard w/gold decoration, not carnival
- ___ 120. **Leaf Chain 9" plate - marigold - super nice**
- ___ 121. Beaded Shell mug - blue - scarce color
- ___ 122. Beaded Shell mug - purple
- ___ 123. **Wishbone & Spades 6" plate - purple - super pretty**
- ___ 124. M'burg Hanging Cherries creamer & spooner - amethyst - choice
- ___ 125. Holly 6 ruffled bowl - white - nice
- ___ 126. Drapery 8" vase - ice green - minor nick on one toe, nice

- ___ 127. Persian Medallion 10" ruffled bowl - amethyst - pretty
- 850 128. **Peach 5 pc. water set - white - very scarce & pretty set!**
- ___ 129. Acorn ruffled bowl - marigold
- ___ 130. Nippon PCE bowl w/ribbed back - ice blue - scarce, nice
- ___ 131. Fenton's Peacock at Urn ruffled compote - aqua - scarce color
- ___ 132. Wishbone 10" ruffled bowl - marigold - pretty
- ___ 133. Fenton's Grape & Cable ftd ruffled bowl - lime green
- 650 134. **Jockey Club handgrip adv. plate - amethyst - extremely rare, highly desirable**
- ___ 135. M'burg Grape Wreath 3 in 1 edge 7" bowl - amethyst - radium & nice
- ___ 136. **Embroidered Mums ruffled bowl w/ribbed back - blue - scarce, pretty**
- ___ 137. N's Stippled Rays 10" ruffled bowl - marigold
- ___ 138. Panther ftd ruffled sauce - red - bit silvery
- ___ 139. Panther ftd round sauces (3) - marigold - choice
- ___ 140. Dugan Cherries round bowl - purple - pretty
- ___ 141. Flowering Dill square shaped crimped edge hatshape - blue
- ___ 142. **Stippled Three Fruits 9" plate w/ribbed back - purple - scarce & highly desirable**
- ___ 143. Scroll Embossed 9" plate - marigold
- ___ 144. Fenton's Peacock at Urn ruffled bowl - green - scarce color
- ___ 145. M'burg Holly Whirl ruffled bowl - amethyst - satin
- ___ 146. Fruits & Flowers bon bon - green
- ___ 147. Fruits & Flowers bon bon - blue - electric
- ___ 148. Imperial Grape ruffled bowl - marigold
- 1000 149. **Poppy Show 9" plate - blue - very pretty example & very rare**
- ___ 150. Garland rose bowl - blue
- ___ 151. Garland rose bowl - marigold
- ___ 152. Wide Panel 14 1/2" chop plate - marigold
- ___ 153. Wide Panel 11" deep round bowl - marigold
- ___ 154. N's #631 12" chop plate - jade blue - stretch
- ___ 155. Wide Panel 13" chop plate - white - stretch
- ___ 156. Fenton #219 cvd compote - celest blue - stretch
- ___ 157. US Glass #310 compote - celest blue - stretch
- ___ 158. US Glass #8105 round bowl - smoke - stretch
- ___ 159. N's #639 plate - celest blue - stretch
- ___ 160. Dugan cupped bowl - ice green - stretch
- ___ 161. Footed round bowl - russet - stretch
- ___ 162. Fenton's #735 covered compote - white - stretch
- ___ 163. N's #692 flared bowl - vaseline - stretch
- ___ 164. Dugan pair of candlesticks - ice green - stretch
- ___ 165. Opalescent glass sandwich tray - white opal
- ___ 166. Candlestick bowl - marigold - stretch
- ___ 167. Stretch candlestick w/enamelled edge - ice green
- 800 168. **Rose Show ruffled bowl - aqua opal - super butterscotch example**
- ___ 169. Imperial Grape large round bowl - marigold - pretty
- 500 170. **Grape & Cable perfume bottle - purple - very pretty example**
- ___ 171. Singing Birds mugs (2) - purple - choice
- ___ 172. Singing Birds mug - marigold
- ___ 173. Grape & Cable water pitcher - marigold - scarce
- ___ 174. Fentonia spooner - marigold
- ___ 175. Fine Rib 9" vase - red - scarce & desirable
- ___ 176. Singing Birds indiv. berry bowl - green
- ___ 177. Singing Birds indiv. berry bowl - purple
- ___ 178. **Wishbone & Spades ruffled 10" bowl - purple**
- ___ 179. Wishbone & Spades ruffled sauce - purple
- ___ 180. Acanthus chop plate - smoke - scarce & pretty
- ___ 181. Wide Rib 11" vase - peach opal
- ___ 182. Pinecone 6" saucer shaped plate - green - scarce
- ___ 183. Raindrops dome ftd 3 in 1 edge bowl - peach opal
- ___ 184. **Paneled Dandelion tankard water pitcher - green - scarce, nice**
- ___ 185. Paneled Dandelion tumbler - green
- ___ 186. Australian Magpie master ruffled bowl - marigold - nice
- 7100 187. **N's Corn vase w/stalk base - green - scarce, nice**
- ___ 188. Orange Tree mug - blue
- ___ 189. Heavy Grape chop plate - amber - scarce, very pretty

- ___ 190. Basketweave Open Edge ruffled hat - marigold
- 750 191. **Persian Garden chop plate - lavender - very, very rare, light on irid.**
- ___ 192. Pansy pickle dish - amber - nice
- ___ 193. Imperial Grape 10" ruffled bowl - amethyst - very pretty
- ___ 194. Raspberry ruffled compote - purple
- ___ 195. **Leaf Columns 10" vase - lavender - has amber highlights for irid., rare color**
- ___ 196. Enameled Cherries & Little Flowers 6 pc. water set - blue
- ___ 197. Lotus & Grape bon bon - aqua - very pretty, scarce
- ___ 198. Coinspot rose bowl - marigold
- ___ 199. Flowers & Frames dome ftd ruffled bowl - purple - pretty
- ___ 200. Corinth 9" vase - aqua - scarce color
- ___ 201. Grape & Cable butter dish - purple - scarce
- ___ 202. Kittens 2 sides up dish - marigold
- ___ 203. Thin Rib 11" vase - olive green
- ___ 204. Los Angeles 1906 Shriners plate - not carnival
- 400 205. **N's Corn vase w/plain base - marigold - scarce color & nice**
- 600 206. **N's Corn vase w/plain base - green - pretty & also scarce**
- ___ 207. Single Flower 3 in 1 edge dome ftd bowl w/enameled flowers - peach opal
- ___ 208. **Greek Key 9" plate w/BW back - purple - silvery**
- ___ 209. Diamond Rib 11" vase - marigold
- ___ 210. Hearts & Flowers ruffled compote - white
- ___ 211. Holly & Berry 7" ruffled bowl - purple
- ___ 212. Basketweave Open Edge large size square shaped basket - ice green - nice
- ___ 213. Orange Tree fruit bowl - marigold - super pretty
- ___ 214. Raspberry gravy boat - purple
- ___ 215. Round Up 3 in 1 edge bowl - peach opal
- ___ 216. Pepper Plant ruffled hatshape - blue
- ___ 217. **Lattice & Grape 7 pc. tankard water set - marigold - super tankard & matching tumblers**
- ___ 218. Inverted Strawberry 7" round bowl - green
- ___ 219. Grape & Cable hatpin holders (3) - purple - choice
- ___ 220. Pinecone ruffled sauce - marigold
- ___ 221. **Stippled & Banded Grape & Cable banana boat - blue - hard to find**
- ___ 222. Leaf Chain 7" plate - marigold
- ___ 223. Morning Glory 17" funeral vase - marigold - very pretty example
- ___ 224. Peacock & Grape 3 in 1 edge bowl - green
- ___ 225. **Stippled Three Fruits spt ftd ruffled bowl - lime green - very rare color & highly desirable**
- ___ 226. Coin Dot 3 in 1 edge bowl - green
- ___ 227. Apple Tree water pitcher - marigold - very nice
- ___ 228. Apple tree tumbler - marigold - pretty
- ___ 229. Fenton's Three Fruits 9" plate - blue - nice
- ___ 230. Stork & Rushes mug - marigold
- ___ 231. Lions IC shaped bowl - marigold
- ___ 232. **Golden Harvest 5 pc. wine set - amethyst - scarce color**
- ___ 233. Diamond Rib 11" vase - amethyst
- ___ 234. **Inverted Strawberry 9" deep round bowl - amethyst - signed Near Cut**
- ___ 235. Grape Delight rose bowl - purple - large chip on foot
- ___ 236. **M'burg Little Stars 7" ruffled bowl - amethyst - satin, nice**
- ___ 237. Frosted Block rose bowl - white
- ___ 238. Fishscale & Beads 7" plate - marigold - super pretty
- ___ 239. Poinsettia milk pitcher - marigold
- ___ 240. M'burg Nesting Swan ruffled bowl - marigold - radium, light irid.
- ___ 241. Grape & Cable PCE bowl w/BW back - green
- ___ 242. **Isaac Benesch & Sons Adv. ruffled bowl - amethyst - scarce**
- ___ 243. Holly 6 ruffled bowl - marigold
- ___ 244. Rising Sun water pitcher - marigold
- ___ 245. Louisa rose bowl - purple
- ___ 246. Persian Medallion card tray shaped bon bon - lime green - marigold overlay, very nice
- ___ 247. Grape & Cable 7" ruffled bowl - green - pretty
- ___ 248. Petals ruffled compote - green
- ___ 249. Diamond Ring ruffled bowl - marigold
- ___ 250. Scales ruffled bowl - blue opal
- ___ 251. Beaded Panels tri-cornered crimped edge compote - peach opal - scarce
- 1150 252. **Hearts & Flowers 9" plate w/ribbed back - ice blue - extremely rare plate & highly desirable**

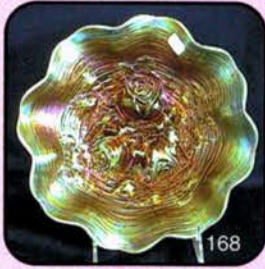
- ___ 253. Luster Rose butter dish - marigold
- ___ 254. Hatpins including: Triad, Top of the Morning, Scarab, Border Path, Bullet, Honeycomb & Butterfly in teal, 2 non irid., & 1 unknown - choice
- ___ 255. Carolina Dogwood ruffled bowl - marigold on moonstone
- ___ 256. M'burg Blackberry Wreath IC shaped sauce - amethyst - radium & nice
- ___ **257. Captive Rose 9" plate - marigold**
- ___ 258. Honeycomb kerosene lamp w/shade marigold
- ___ 259. Propeller miniature compote - green
- ___ 260. Strawberry ruffled bowl w/BW back - purple
- ___ 261. Four Pillars 11" vase - aqua opal - scarce, nice
- ___ 262. Grape & Cable cologne bottle, no stopper - purple
- 700* ___ **263. Autumn Acorn 9" plate - green - very rare plate plus nice**
- ___ 264. Daisy car vase - marigold - neat piece
- ___ 265. N's Fine Rib 10" vase - amethyst
- ___ 266. Persian Medallion CRE ruffled compote - green - scarce
- ___ 267. Golden Wedding pint bottles (2) - marigold - choice
- ___ 268. Isaac Benesch & Sons 54th Anniv. Holly card tray shaped bon bon - marigold - satin & nice
- ___ 269. Windmill pickle dish - marigold
- ___ 270. Stork ABC plate - marigold
- ___ 271. Peacock & Dahlia IC shaped bowl - marigold
- ___ 272. Grape & Cable punch bowl base - purple
- ___ **273. N's Eight Sided bushel basket - green - super, scarce color**
- ___ 274. Lattice & Daisy berry bowl - marigold
- ___ 275. Blackberry Spray square shaped hatshape - lime green
- 950* ___ **276. Wishbone & Spades chop plate - purple - super pretty**
- ___ 277. Smooth Rays 3 in 1 edge bowl - marigold
- ___ 278. Diamond Lace round bowl - marigold
- ___ 279. Stippled Rays ruffled bowl - amethyst
- ___ 280. Bambi powder jar - marigold
- ___ 281. Martha bowl - marigold
- ___ 282. Paneled lamp shade - marigold
- ___ 283. Crackle candlesticks - marigold
- ___ 284. Butterfly & Berry tumblers (2) - marigold - choice
- ___ 285. Carnival Hobstar ruffled bowl - marigold
- ___ 286. Band of Roses bowl - marigold - contemporary

Jim and Jan Seeck **Seeck Auctions** 641-424-1116

Seeck Auctions

P.O. Box 377
Mason City, Iowa 50402

PRESORTED
FIRST-CLASS MAIL
U.S. POSTAGE PAID
MINNEAPOLIS, MN
PERMIT NO. 28534



*****AUTO**MIXED AADC 553

Lee Markley
PO Box 306
Mentone, IN 46539-0306

