

www.AWK-SHN.com

CARNIVAL GLASS AUCTION - LIVING ESTATE

SATURDAY, SEPTEMBER 18, 2004 - 9:30 A.M. - C.D.T.

Held in Wentzville, Missouri - Holiday Inn

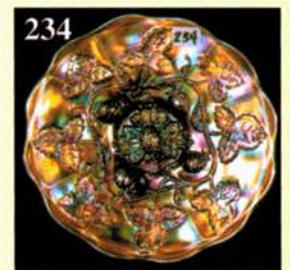
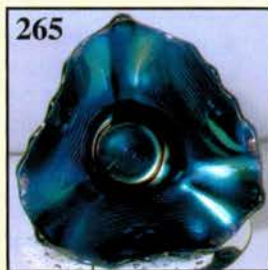
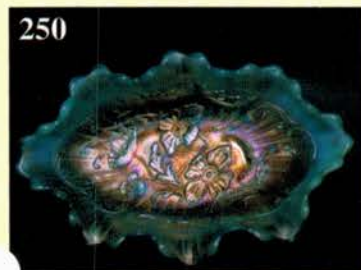
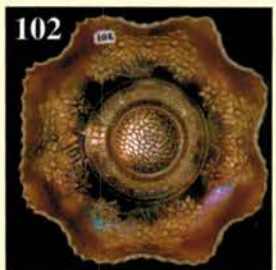
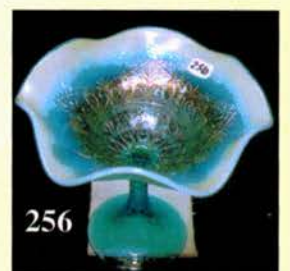
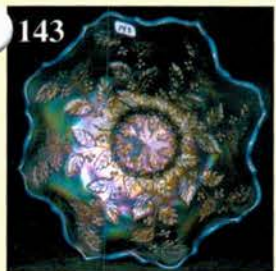
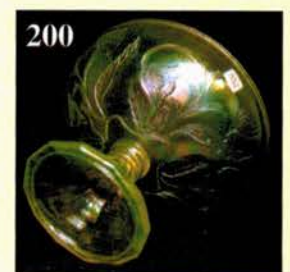
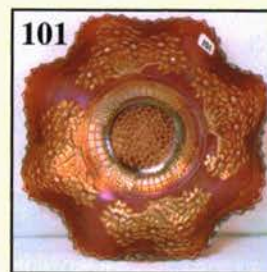
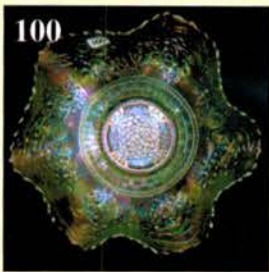
West of St. Louis, Missouri at Exit 212 Hwy A Off I-70 Hwy - 900 Corporate Parkway

Featured By the Mickey Reichel Antique & Auction L.C.

Office: 660-882-5292 • Home: 660-882-5283

E-mail: mreichel@AWK-SHN.com • NEW WEB SITE: www.AWK-SHN.com

Call Now! Special Room Rate Cut-Off August 23rd (636) 327-7001



EVERYONE IS WELCOME

Held at Holiday Inn Wentzville, Missouri

West of St. Louis at Exit 212, Hwy A, Off I-70 Hwy - 900 Corporate Parkway, Wentzville, MO 63385

Preview Friday 4 p.m.-7 p.m. and Saturday 7:30 a.m.-9:00 a.m. (Auction Time)

For Information: Phone 636-327-7001 • Fax (636) 327-7019

NEW WEB SITE: www.AWK.SHN.com

ABSENTEE BID POLICY:

WRITE IN BIDS: If you are unable to attend the auction, we will be happy to accept absentee bids which must be received by THURSDAY, SEPTEMBER 16, 2004. Don't Delay. E-Mail: mreichel@awk-shn.com

FOR AUCTION PRICE RESULTS: Send \$3.00 and Large S.A.S.E. to 18350 Hunters Ridge Ct., Boonville, MO 65233

PLEASE NOTE: There is a **\$5 handling charge for each successful bid which will be added to the selling price** for all write-in bids. This is in addition to the cost of postage, insurance and packing. Your write-in bid will be entered just as if you are present and bidding. **Successful bidders will be notified in 1 to 3 days by the auctioneer (so be sure to include your phone number).** Direct mail bids to Auctioneer **Mickey Reichel, 18350 Hunters Ridge Ct., Boonville, MO 65233.** Terms: Cash or Check accepted with proper I.D. and Social Security Number and References. Announcements made day of the auction supercede all printed material. Not Responsible for Accidents or Sold Items.

No return on any items once they leave the Auction Center (No Exceptions).****

Call for additional information: 660-882-5292 days or 660-882-5283 evenings before 9:00 p.m.

FAX: 660-882-5292 (evening hours start FAX transmission after beep)

MAIL BIDS: Items are bid on in perfect condition with average or above iridescence OR as listed in the brochures. Bids will not be carried out when damage on an item has been found during the auction.

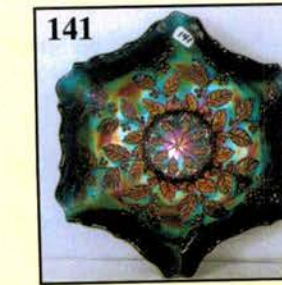
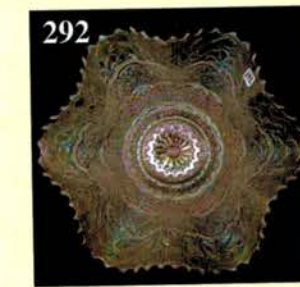
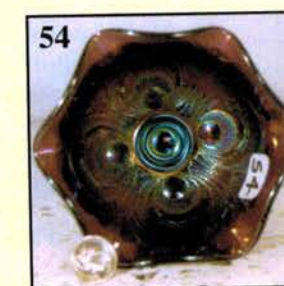
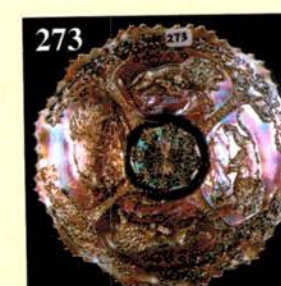
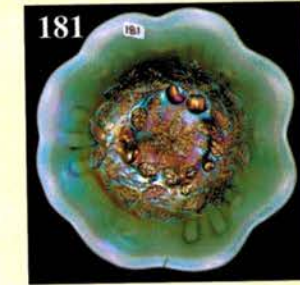
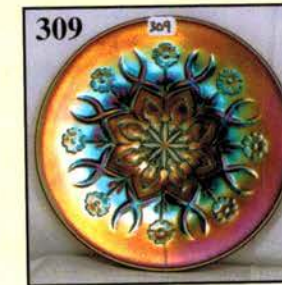
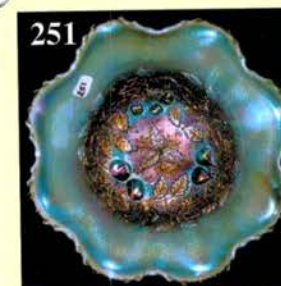
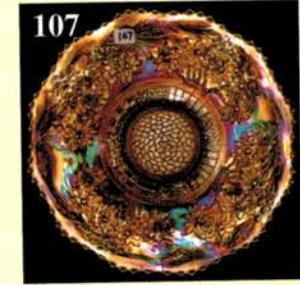
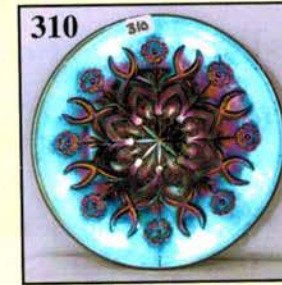
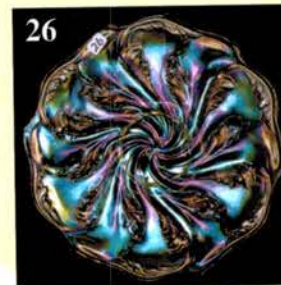
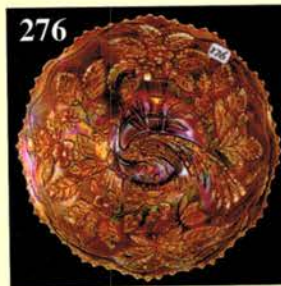
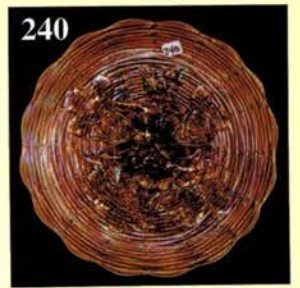
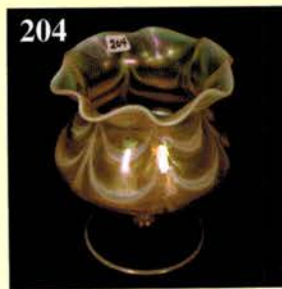
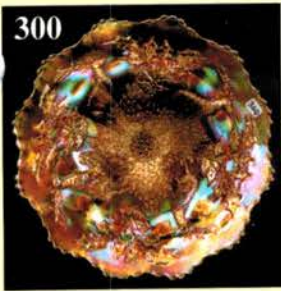
PEOPLE PRESENT AT AUCTION ARE RESPONSIBLE FOR FINDING ANY PINHEADS, WEAR, SPOTTINESS, MANUFACTURER'S DEFECTS OR ANY OTHER MINOR FLAWS, ETC. *****

NOTE: Read each line, as we have accentuated the type of no particular piece, all are special.

SPECIAL NOTE: Auctioneers have often been accused—and so wrongly, I might add—of excessive hyperbole when it comes to describing the carnival glass items in their auctions. However, this sale is so powerful, with so many great rarities, unusual shapes and spectacular color that I could write a paragraph about almost every piece in the sale. Instead, I will use this opening header to state the above and to remind readers that long-windedness could be applied to virtually every listing. I have suppressed my natural inclination to describe in illustrative terms, depending on the savvy of the buyers and my photographs to show the pieces to their best advantage. With these thoughts in mind, please read and enjoy the brochure! Mickey

1. Pumpkin M - Imp. 5-1/2" Miniature Morning Glory Vase
2. Elec. P - Imp. 6" Miniature Morning Glory Vase
3. G - Imp. 6-3/8" Miniature Morning Glory Vase - Also Nice
4. Dark Amber - Imp. 8" Squatty Ripple Vase
5. Rich Amber - Imp. 10-3/4" Ripple Vase
6. Electric P - Imp. 9-1/4" Parlor Panels Vase - 5-1/2" Flared Opening
7. Pastel Lavender - Imp. 12" Parlor Panels Vase - Awesome Iridescence
8. P - Imp. 11-1/4" Beaded Bullseye Vase - Multi Electric
9. M- Imp. 11-1/4" Beaded Bullseye Vase - Loads of Pinks, Blues, Yellows

10. Radium Amber - Imp. 8-3/4" Squatty Beaded Bullseye Vase - 5-1/4" Opening - Great Irid!
11. Rare Blue - Imp. 10-1/2" Ripple Vase
12. Rare Blue - Imp. 10-7/8" Ripple Vase
13. Purple - Imp. 7-3/4" Squatty Ripple Vase - 3-3/8" Base, 5-3/4" Wide Mouth - Nice
14. P - Imp. 5-1/2" Colonial Lady Vase - Great Electric Example
15. Smoke - Imp. 4-1/2" Rococco Vase - Colorful Example
16. Radium M - Imp. 5-1/4" Thumbprint and Ovals Vase - Lovely
17. Crystal Frosted - Imp. 13-3/4" Smooth Panels Funeral Vase - 6-1/2" Top, 4-1/2" Base, Iron Cross Mark, M. Overlay Top Half



- _____ 18. **Electric P - Imp. 12-1/2" Morning Glory Funeral Vase - Multi-Starred 5" Base, 9-3/4" Flared Opening - A Monster!**
- _____ 19. B - Fenton 14-1/2" Spearhead and Rib Swung Vase - 5-3/4" Opening
- _____ 20. **A - Fenton 9-3/4" CRE April Showers Vase - 5" Opening**
- _____ 21. M - Fenton 9-3/4" Knotted Beads Swung Vase - CRE Top
- _____ 22. **Cherry Red - Fenton 9-3/4" Fine Rib Vase - Nice**
- _____ 23. Red - Fenton 10-1/4" Fine Rib Vase - Tulip Top
- _____ 24. **Smoke - Imp. Pansy 9", Low Ruffled Bowl/Plate - Radium and Nice**
- _____ 25. Olive G - Imp. 7-1/2", 8 Ruffle Windmill Bowl - Radium Silver Irid.
- _____ 26. **Smoke - Imp. Acanthus 10-1/4" Chop Plate - Scarce and Pretty**
- _____ 27. M - Imp. Star and File Rosebowl - 5" Opening
- _____ 28. **Rich Amber - Imp. 9" Open Rose Plate - Fine Example**
- _____ 29. Clambroth - Imp. Frosted Block Compote - 4-5/8" Tall - Clear Base
- _____ 30. **Scarce Amber - Imp. 8-1/4" Heavy Grape Plate - Stretchy**
- _____ 31. G - Imp. 4-1/2" Heavy Grape Nappy - Cute Item
- _____ 32. **Vaseline Base/M. Overlay - Imp. Grape Cup and Saucer - Both Glow**
- _____ 33. M - Imp. Fashion Breakfast Cream and Sugar
- _____ 34. **P - Imp. Star of David 9", 8 Ruffle Bowl - Electric Radium Beauty**
- _____ 35. M - Imp. 474 Wine Glass - Scarce Little Beauty
- _____ 36. **Very Rare Imp. Blue - Imp. Grape Wine - Outstanding Rarity**
- _____ 37. Electric P - Imp. Grape Stemmed Wine - Sorry, Internal Fracture
- _____ 38. **M - Imp. Flute and Cane Stemmed Wine**
- _____ 39. B - Fenton Sailboats Stemmed Wine - Great Find
- _____ 40. **Dark M - King's Crown 3-3/4" Wine Goblet - Colorful**
- _____ 41. Lav. Base - Imp. Diamond and Sunburst Stemmed Wine - Chip on Base - Still Very Scarce
- _____ 42. **P - Imp. Diamond and Sunburst Stemmed Wine - Flared Top**
- _____ 43. P - Imp. Diamond and Sunburst Stemmed Wines - Straight Tops - 2 x \$
- _____ 44. **Scarce Lavender - Dugan Golden Harvest Wine Glass**
- _____ 45. P - Imp. 7" Round Windmill Bowl - Electric Blues and Purples
- _____ 46. **P - Imp. 7-3/4", 8 Ruffle Shell and Sand Bowl - Multi Electric**
- _____ 47. Rare Smoke - Imp. 9-3/4" Daisy Handled Basket - Not Many Out There
- _____ 48. **G - Imp. Grape Carafe - Beautiful Gold and Silver Irid. - Base Glows**
- _____ 49. Rich M - Imp. Grape Carafe - Nice One
- _____ 50. **Fantastic, Rare Smoke - Imp. Grape Carafe**
- _____ 51. Purple - Imp. Grape Carafe - Astonishing Irid. Top to Bottom
- _____ 52. **Superb Radium Smoke - Imp. Corn Bottle - One of the Best**
- _____ 53. G - Imp. Corn Bottle - Radium Silver Irid.
- _____ 54. **P - Imp. Scroll Embossed Miniature Ruffled Compote - Super Sweet**
- _____ 55. Radium Electric P - Imp. Hobstar Flower Ruffled Compote
- _____ 56. **Honey Amber (?) - Imp. Homestead Chop Plate - Gorgeous, Stretchy Pastel Irid.**
- _____ 57. Smoke - Imp. Shell and Sand 9-3/4" Plate - Striking Multi-Color Irid.
- _____ 58. **Amber - Imp. Grape 6-1/2" Plate - Scarce and Lovely**
- _____ 59. P - Imp. Grape 6-5/8" Plate - Radium Electric
- _____ 60. **Lime G. Vas. - Imp. Grape 6-1/4" Plate - Radium Silver & Gold Irid.**
- _____ 61. M - Imp. Grape 6-1/2" Plate - Super Dark and Nice
- _____ 62. **Electric P - Imp. Diamond Lace Water Pitcher**
- _____ 63. Electric P - Imp. Diamond Lace Tumbler
- _____ 64. **Incredible B - Fenton Floral and Grape Vt. Water Pitcher - Scarce One**
- _____ 65. Super Pastel W - Dugan Floral and Grape Water Pitcher - WOW!
- _____ 66. **Frosty W - Dugan Floral and Grape Tumbler - Loaded with Blues**
- _____ 67. Pumpkin M - Flute and Cane Water Pitcher - Top Notch
- _____ 68. **RARE M - Enamelled Cherries Bulbous Water Pitcher - Few Known**
- _____ 69. **RARE M - Enamelled Cherries Tumbler - Also Scarce**
- _____ 70. **Ice G. Vas. - Enamelled Lotus Water Pitcher and 4 Tumblers - Glows**
- _____ 71. B - Dugan Stork and Rushes 7 pc. Water Set - Well Matched Set
- _____ 72. **P - Dugan Peacock at Fountain Water Pitcher - Nice Piece**
- _____ 73. Radium G - Fenton Butterfly and Fern Water Pitcher - CRE Top
- _____ 74. **M - Dugan Peacock at Fountain Water Pitcher**
- _____ 75. Pumpkin M - Dugan Peacock at Fountain Tumbler - Hard to Find
- _____ 76. **M - Imp. File Water Pitcher - 10" Tall - Uncommon and Nice**
- _____ 77. M - Imp. File Tumbler - Very Pretty
- _____ 78. **M - Enamelled Orchid Water Pitcher - Nice**
- _____ 79. M - Enamelled Lotus Tumbler - Choice A, B, C
- _____ 80. **Excellent Smoke - Imp. Star Medallion Milk Pitcher**
- _____ 81. **Rare Aqua - Imp. Grape 6 Matching Tumblers - 6 x \$ - Got the Pitcher?**
- _____ 82. **Lav. Flash - Duncan and Sons (?) Pattern Glass Tumblers - Flute Pattern, Rayed Star In Base - 6 x \$**
- _____ 83. Pumpkin M - Riihimaki Flashing Star Pitcher - Crack in Handle, But Rare!
- _____ 84. **M - Flashing Star Vt. Tumbler - Another Scarce Item**
- _____ 85. M - Imp. 474 Milk Pitcher
- _____ 86. **M - U.S. Glass Rising Sun Juice Pitcher**
- _____ 87. M - Buzz Saw and File Goblet - Not Often Seen
- _____ 88. **Yellow Amber - Omnibus Tumbler - Rare**
- _____ 89. Radium M - Diamond Cut Shields Tumbler - Scarce
- _____ 90. **B - Grand Thistle Tumblers - Choice A or B**

- _____ 91. Marigold Over Milk Glass - Westmoreland Scales 8-1/2", 6 Ruffle Bowl
- _____ 92. Marigold Over Milk Glass - Westmoreland Daisy Wreath 8-1/4", 6 Scallops Bowl - Outstanding Example
- _____ 93. Opaque Blue Milk Glass - Westmoreland 6", ICS, #270 Compote
- _____ 94. Yellow - Westmoreland Leaf Swirl 6", 6 Ruffle Compote
- _____ 95. Teal - Westmoreland Leaf Swirl 7", 6 Ruffle Compote
- _____ 96. Marigold Over Milk Glass - Westmoreland Hobstar & Fruit 6" Card Tray or Banana Shape Dish - Very Scarce!
- _____ 97. PO - 4", 4 Ruffle Small Whimsey Dish - Pattern (?) - Floral on Reverse
- _____ 98. PO - Westmoreland 6-1/2", Round, Flared File and Fan Compote
- _____ 99. Teal - Westmoreland Small Shell Dish

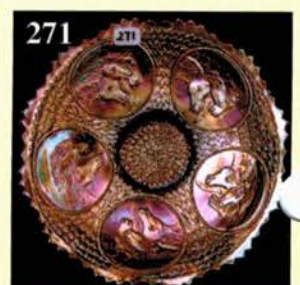
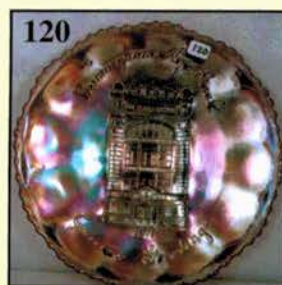
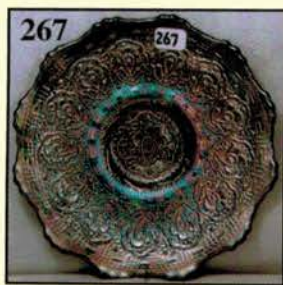
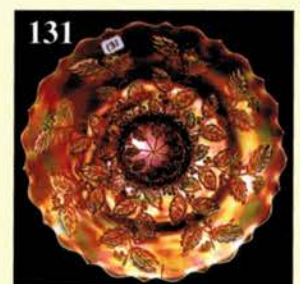
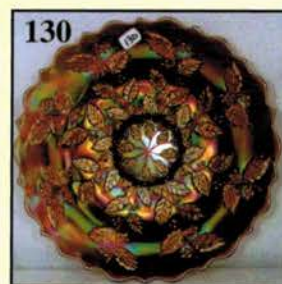
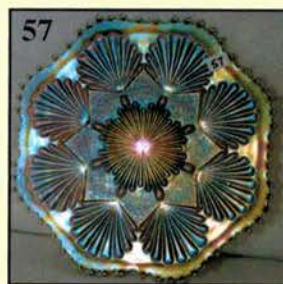
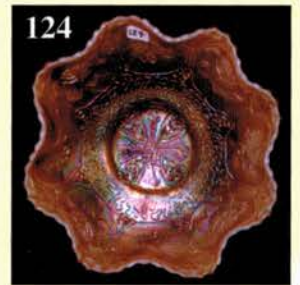
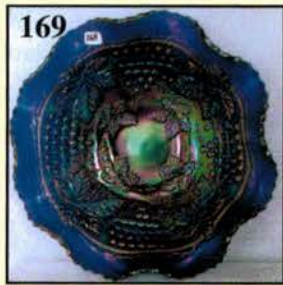
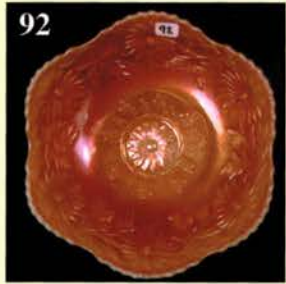
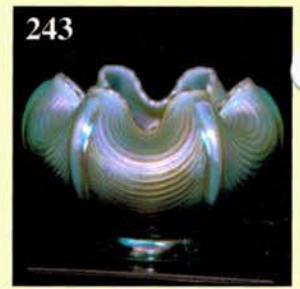
EXCELLENT GROUPING OF ORANGE TREE PIECES

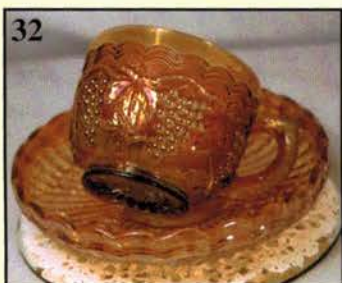
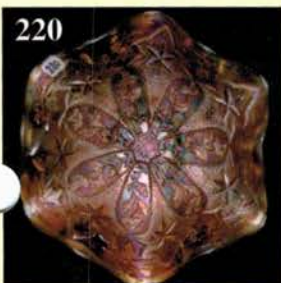
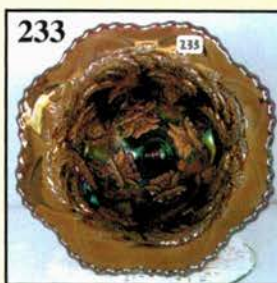
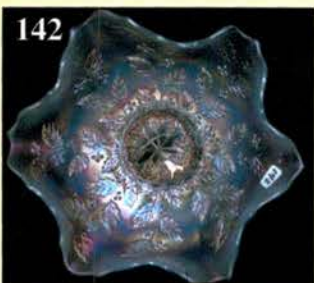
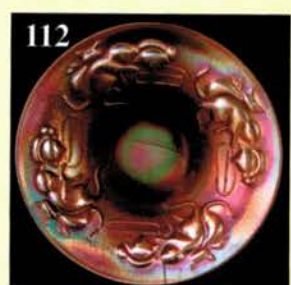
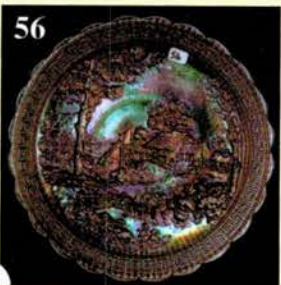
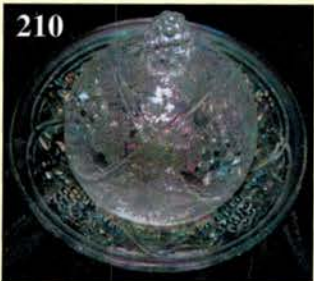
- _____ 100. Extremely Rare: Ice Green - Fenton 9", 6 Ruffle Orange Tree Bowl w/Trunk Center. Pastel Electric Iridescence. Possibly One of a Kind and So Beautiful! And It Glows!!
- _____ 101. Super Red - Fenton 9", 8 Ruffle Orange Tree Bowl - Bearded Berry Ext.
- _____ 102. Peach Opal (or Moonstone??) - Fenton 9", 8 Ruffle Orange Tree Bowl - Very Rare and Very Different Color - Your Call!!
- _____ 103. True Moonstone - Fenton 9", 8 Ruffle Orange Tree Bowl - Fantastic Example
- _____ 104. Elec. B - Fenton 7-3/4", Deep, Round Orange Tree Bowl
- _____ 105. B - Fenton 9", 3 in 1 Edge Orange Tree Bowl - Purple Streak or Slag in Base
- _____ 106. Frosty W - Fenton 9-1/2" Orange Tree Plate - Blue & Yellow Irid.
- _____ 107. Radium M - Fenton 9-1/2" Orange Tree Plate - Attractive
- _____ 108. Clambroth - Fenton 9-1/4" Orange Tree Plate - Scarce
- _____ 109. Amazing B - Fenton 9-1/2" Orange Tree Plate - Multi Electric Stretch
- _____ 110. Rare B - Fenton Kittens Toothpick Holder
- _____ 111. M - Fenton Kittens Toothpick Holder - Dark and Pretty
- _____ 112. Dark M - Fenton Kittens Flat 4-1/2" Plate - LOOK!
- _____ 113. Beautiful W - Fenton Persian Medallion Rosebowl - Pastel Delight!
- _____ 114. Rare G - Fenton Blackberry Miniature Compote - Great Color and Condition
- _____ 115. Rare A - Fenton Blackberry Miniature Compote - Great Color and Condition
- _____ 116. Powder B - Fenton 5-1/2", 6 Ruffle, 2-Row O.E. Basket
- _____ 117. Teal G - Fenton 9-1/4", Spat Ftd. Grape and Cable Plate - Marigold Overlay
- _____ 118. A - Fenton 9-1/4", Spat Ftd. Grape and Cable Plate - Stretchy Irid.
- _____ 119. Dark M - Fenton Two Fruits Divided Bonbon - Undervalued Item

- _____ 120. Scarce A - Birmingham Age Herald Adv. Plate (1911) - Always in Demand
- _____ 121. Dark B - Fenton 10-1/4", 6 Ruffle Little Flowers Bowl - Great Color
- _____ 122. Dark B - Fenton 10-1/4", 3 in 1 Edge Vintage (Grape) Low Bowl - Above Average
- _____ 123. Pastel M - Fenton 9", 8 Ruffle Dragon and Lotus Bowl - Silver Satin Irid.
- _____ 124. Rare PO - Fenton 8-1/2", 8 Ruffle Dragon and Lotus Bowl - Loaded with Irid.
- _____ 125. Rare PO - Fenton 9", 3 in 1 Edge Dragon and Lotus Bowl - Great Color
- _____ 126. Lovely Amber - Fenton 8-1/2", 8 Ruffle Dragon and Lotus Bowl - Tough Color

OUTSTANDING VARIETY OF HOLLY PIECES GREAT SELECTION

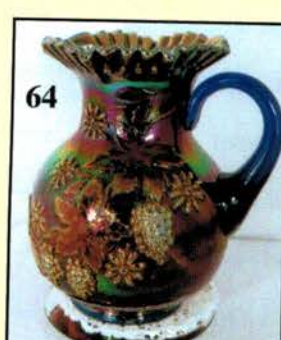
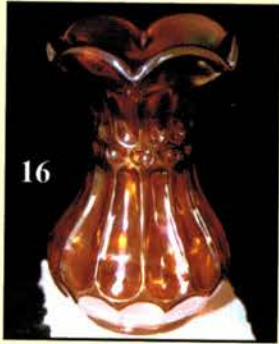
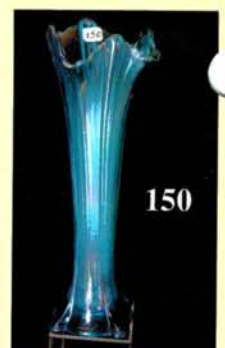
- _____ 127. Unusual B - Fenton 9-1/4", 3 in 1 Edge Holly Bowl - Very Different Irid. Inside
- _____ 128. B - Fenton 9-1/2" Holly Plate - Unique and Wonderful - Iridescence
- _____ 129. Scarce Clambroth - Fenton 9-1/2" Holly Plate - Nice, Stretchy Irid.
- _____ 130. Rare A - Fenton 9-1/2" Holly Plate - Multi Electric
- _____ 131. Pumpkin M - Fenton 9-1/2" Holly Plate - A-Plus Piece
- _____ 132. Scarce A - Fenton 9-1/4", 3 in 1 Edge Holly Bowl - Scarce Shape
- _____ 133. Lav. - Fenton 9", 8 Ruffle Holly Bowl - Desirable Color
- _____ 134. Pastel Powder B - Fenton 9", 8 Ruffle Holly Bowl
- _____ 135. G - Fenton 9", 8 Ruffle Holly Bowl - Look at the Blues On This One
- _____ 136. Lime G - Fenton 9", 8 Ruffle Holly Bowl - Different, Pretty
- _____ 137. Yellow Vas. - Fenton 9", 8 Ruffle Holly Bowl - Superb Example
- _____ 138. Moonstone - Fenton 6", 6 Ruffle Holly Hat - A Good One
- _____ 139. Rich M - Fenton 9-1/4", 6 Ruffle Holly Bowl - Tremendous Blues & Pinks
- _____ 140. W - Fenton 9-1/2", 6 Ruffle Holly Bowl - Pastel Rainbow
- _____ 141. Elec. B - Fenton 9-1/4", 6 Ruffle Holly Bowl
- _____ 142. Pale Ice B - Fenton 9-1/4", 6 Ruffle Holly Bowl - What an Unusual Color and Its Nice
- _____ 143. Stunning Blue Opal - Fenton 9", 8 Ruffle Holly Bowl - A Bad Boy!
- _____ 144. Clambroth - Fenton 9-1/4", 6 Ruffle Holly Bowl - Scarce and Nice
- _____ 145. Clambroth - Fenton 8-1/2", ICS Holly Bowl - Scarce Shape and Color
- _____ 146. Rich M - N Peacock at Fountain Punch Bowl and Base - A Winner For Color!
- _____ 146A. M - N Peacock at Fountain Punch Bowl Base
- _____ 147. Ice G - N Corn Vase w/Stalk Base, Pastel Marigold Overlay
- _____ 148. Sapphire Stretch - N 9" Twist Vase (#727) - Plate 636 in Stretch Book - Rare Beauty!
- _____ 149. Blue Opal - Westmoreland 9" Corinth JIP Vase
- _____ 150. Rare Sapphire - N 11" Four Pillars Vase - Pastel Dandy





151. Dark B - N 11" Four Pillars Vase - Electric Highlights - Toe Chip
152. Pastel AO - N Four Pillars 11" Vase - Good Color, Good Feet
153. Citrene - N 11-1/4" Thin Rib Vase
154. W - Dugan 8-1/4" Lattice and Points Vase - Daisy in Bottom, Scarce and Sharp Detail
155. AO - N Daisy and Drape Vase - Flared Top, Butterscotch Overlay
156. M - Jain 5-1/4" Diamond Heart Vase - Great Find - Rare
157. M - N Fine Rib Footed 5-1/2" Ruffled Vase - Neat Shape
158. P - N 9-1/4" Thin Rib Vase - 5-1/4" Flared Opening - Nice Color
159. Lav. - N Leaf Columns 10-3/4" Vase - Radium Electric Jewel!
160. Dark Ice G - N 6-1/2" Squatty Tree Trunk Vase - 3-1/2" Base, 5" Opening - Great Rarity
161. Near Emerald G - N 6-1/2" Squatty Tree Trunk Vase - 3-1/2" Base, 5-1/2" Opening - Just Tons of Blues
162. P - N 6-3/4", Squatty Tree Trunk Vase - Great Electric Hues
163. Deep B - N 6-1/2", Squatty Tree Trunk Vase - Super Electric and Rare
164. PO - Dugan 8-1/2", CRE, Ftd. Cherries Bowl/Plate? - Flattened Nicely, Lots of Opal
165. Outstanding P - N 9-3/4", 8 Ruffle Stippled Rays Bowl - Plain Ext.
166. Rare Lime Green Opal - N Leaf & Beads Rosebowl - Fracture in Base
167. Clambroth - Imp. 9" Pansy Oval Relish Dish - Radium Irid.
168. P - N Stippled Grape and Cable Vt. 9" Plate - BW Ext. - Hard to Find
169. Elec. B - N 10-3/4", 8 Ruffle Grape and Cable Fruit Bowl - Collar Base
170. Pastel M - N Greek Key 9" Plate - Rib Ext. - Fantastic Piece
171. Gorgeous G - N Wild Rose Bowl - Stippled Rays Int. - Scarce This Nice
172. Lav. - N 8-3/4", 8 Ruffle Three Fruits Bowl - BW Ext. - Beautiful
173. PO - Dugan Dome Base Soutache 9" Plate - Nice Find
174. M - N 9" Stippled Three Fruits Plate - Rib Ext.
175. Rich B - Fenton 8-1/2", Round, Ftd. Fantail Master Berry Bowl - Radium
176. G - N Wishbone 8-3/4", Ruffled, Ftd. Bowl
177. P - N Wild Strawberry 10", 8 Ruffle Bowl - BW Ext. - A Dandy
178. A - N Three Fruits 9" Plate - BW Ext. - Great Color and Condition
179. A - N Stippled Rays 9-3/4", Low 8 Ruffle Bowl - Good Example
180. AO - N Peacocks 8-3/4", Ruffled Bowl - Exquisite Pinks and Blues - Butterscotch
181. Unusual Pastel AO - N Stippled Three Fruits Medallion Spat Ftd. Bowl - Smooth Rims on Ruffles
182. Outstanding P - N Singing Birds Mug - Electric
183. Outstanding Radium Lav. - N Singing Birds Mug - Astonishing!
184. Scarce B - Dugan Beaded Shell Mug
185. Dark M - Dugan Fisherman's Mug - Hot Pinks
186. AO - N Dandelion Mug - Pastel M. Overlay
187. A - Dugan Stork In Rushes 2-Sides Up Hat Whimsey from Tumbler - Radium Silver
188. Frosty W - N Grape Arbor Ruffled Hat Whimsey from Tumbler
189. B - N Grape Arbor Ruffled Hat Whimsey from Tumbler - Scarce Color
190. G - Cambridge Inverted Feather Cracker Jar with Lid - Best Example for Color I've Seen!
191. G - Cambridge Wheat Sheath Cologne Bottle and Stopper - This Is One Rare Piece!
192. Scarce G - Cambridge Buzz Saw Large Cruet w/Stopper - Chips on Stopper, but it's there!
193. Very Scarce G - Cambridge Forks Cracker Jar Base Only
194. M - Dugan Mary Ann Three Handle Loving Cup Vase - The Tough One!
195. Outstanding M - Fenton Orange Tree Loving Cup - Dark Top to Bottom
196. Pastel M - Fenton Orange Tree Hatpin Holder - Nearly Perfect Feet - Great
197. Radium M - N Grape and Cable Hatpin Holder
198. P - Fenton Lg. Persian Medallion Compote - 3 in 1 Edge, Pattern Inside and Out - Here's A Hard One To Come By!
199. Vas. - Fenton Persian Medallion Card Tray Bonbon
200. First Known - Northwood Stretch Vaseline (Topaz) Comport - 8-3/4" Across, Round, with 12-Sided Base - Vining Poppies Pattern On Exterior. Nicely Iridized! Once In A Lifetime Opportunity To Own This.
201. M - Fenton Stream of Hearts CRE, Ruffled Compote - Persian Medallion Ext.
202. W - Fenton Peacock At Urn Ruffled Compote - Seldom Seen
203. Sapphire Base - Fenton Peacock At Urn Ruffled Compote - Very Nice
204. Vas. Opal - Fenton Curtain Optic 6" Tall Ruffled Comport - Rare
- * TERRIFIC LINE-UP OF COVERED BUTTER DISHES ***
205. M - Quarter Block (English?) Diamond Shape Butter Dish w/Lid
206. Electric P - Imp. Lustre Rose Butter Dish w/Lid - Unbelievable Imperial Iridescence - Throw The Book Away On This One!
207. M - Imp. Octagon Butter Dish w/Lid - Dark Radium
208. P - Imp. Hobstar Butter Dish w/Lid - Another Winner!
209. M - Fenton Orange Tree Ftd. Butter Dish w/Lid - Nice
210. Super W - U.S. Glass Palm Beach Butter Dish w/Lid - Multi Pastel Tints
211. M - Dugan Dahlia Butter Dish w/Lid - Rare, Has Fracture In Lid
212. W - Dugan Dahlia Butter Dish w/Lid - Rainbow Pastel Irid.
213. P - Dugan Wreathed Cherry Butter Dish w/Lid - Has D in Diamond Mark! Great

- _____ 214. Honey Amber - U.S. Glass Cosmos and Cane Butter Dish w/Lid - Top Notch!
- _____ 215. Vibrant Green - N Grape and Cable Butter Dish w/Lid
- _____ 216. Pumpkin M - N Springtime Butter Dish w/Lid
- _____ 217. M - Cambridge Inverted Strawberry 4 Piece Table Set - Creamer, Sugar w/Lid, Spooner, Butter w/Lid - Rare and Desirable Complete Set
- _____ 218. W - N Peach Butter Dish w/Lid - Good Gold Trim
- _____ 219. W - N Peach Spooner - Also Nice
- _____ 220. M - Mlbg. 7-3/4", 6 Ruffle Little Stars Bowl - Satin & Nice
- _____ 221. A - Mlbg. Peacock And Urn Vt. 6" ICS Bowl - 3 Rows of Beads, 4 Tail Feathers - Not Many of These Around
- _____ 222. Lav. - Mlbg. Peacock 6-1/4" Plate - No Doubt Here - 1" Off Table - RARE
- _____ 223. G - Mlbg. Roses and Fruits Stemmed Bonbon - Factory Heat Flash In Body
- _____ 224. M - Mlbg. 9-3/4", Square Rays and Ribbons Bowl - Scarce and Nice
- _____ 225. Awesome Find! - B - Mlbg. Hanging Cherries 6-1/4", 3 in 1 Edge Bowl - Super Nice Irid. for Blue!
- _____ 226. Very Scarce Olive G - Mlbg. Strawberry Wreath 6" Square Bowl - Radium
- _____ 227. M - Mlbg. Peacock Tail Vt. Ruffled Compote
- _____ 228. P - Mlbg. 9", 6 Ruffle Trout and Fly Bowl - Radium Gold & Silver
- _____ 229. M - Mlbg. 9" Square Trout and Fly Bowl - Satin Pinks and Blues
- _____ 230. M - Mlbg. Seacoast Pin Tray - Scarce They Are! Normal Edge Chiggers
- _____ 231. G - Mlbg. 5-3/4", ICS Peacock Bowl - 8 Tail Feathers, Rather Uncommon In Green
- _____ 232. P - Mlbg. Swirled Hobnail Rosebowl - Great Example
- _____ 233. P - Mlbg. Poppy Compote - Round, Flared, Scalloped Edge - Spectacular Piece
- _____ 234. M - Mlbg. FLAT Blackberry Wreath 6-1/2" Plate - Exciting, Important, Top of the Line Piece
- _____ 235. Olive G - Mlbg. 9", 6 Ruffle Blackberry Wreath Bowl - Colorful Radium
- _____ 236. M - Mlbg. 12-1/4" Swirled Hobnail Vase - Tall and Pretty!
- _____ 237. G - Mlbg. 9-3/4" Swirled Hobnail Vase - Beautiful Radium
- _____ 238. P - Mlbg. 9-1/2" Swirled Hobnail Vase - Scarcest Color In These, High Quality Radium Gem
- _____ 239. P - N 9-1/4" Flat Rose Show Plate - Rainbow Electric
- _____ 240. M - N 9-1/2"! Flat Rose Show Plate - Fabulous, Fabulous Irid.
- _____ 241. AO - N Beaded Cable Rosebowl - M. Overlay
- _____ 242. Scarce G - N Leaf & Beads Rosebowl w/Sunflower Int.
- _____ 243. Ice Blue Opal - N Drapery Rosebowl - Lots Of Opal & Blues
- _____ 244. Frosty W - N Beaded Cable Rosebowl - Quite Attractive
- _____ 245. Dark Ice B - N 8-3/4", Ruffled Hearts and Flowers Bowl - Always In Demand
- _____ 246. Ice G - N 8-1/2", Ruffled Hearts and Flowers Bowl - Lovely Pastels
- _____ 247. Oxblood - N Octet Dome-Base, 7-1/2", 8 Ruffle Bowl - Marie Chip
- _____ 248. G - N Lustre Flute Breakfast Set - Sugar and Creamer
- _____ 249. Awesome G - N 9-1/4", Flat Stippled Strawberry Plate - Rib Ext. - Blues, Pinks, Greens
- _____ 250. Extremely Rare Ice Blue Opal - N Poppy Pickle Dish - Got One?
- _____ 251. AO - N Spat. Ftd., Ruffled, 8-3/4" Three Fruits Medallion Bowl - Stunning Pastel
- _____ 252. Ice G - N 9" Peacocks Plate - Rib Ext. - Blues Deluxe
- _____ 253. P - N 9", Ruffled Peacocks Bowl - Rib Ext. - All Time Favorite
- _____ 254. AO - N Hearts and Flowers Ruffled Compote - Pastel M. Overlay
- _____ 255. Frosty W - N Hearts and Flowers Ruffled Compote
- _____ 256. Blue Opal - N Hearts and Flowers Ruffled Compote - Exceptionally Beautiful & Rare
- _____ 257. Ice B - N Peacock At Fountain Ruffled Compote - Another Winner!
- _____ 258. Knock Out Electric Blue - N Harvest Poppy Ruffled Compote - Very Tough to Find
- _____ 259. Ice B - N 8-Sided Bushel Basket - Just A Dandy
- _____ 260. Ice G - N Round Bushel Basket
- _____ 261. W - N Round Bushel Basket
- _____ 262. Splendid AO - N Round Bushel Basket - Pastel Delight - Loads of Opal
- _____ 263. G - N Round Bushel Basket - Classic Carnival Beauty
- _____ 264. Smoke - N Round Bushel Basket - Fantastic Rarity
- _____ 265. Exceptional Electric Blue - N Drapery Tri-Corner Bowl - Sell The Boat, Sell The House, Sell The Car - A MUST HAVE!!
- _____ 266. Scarce A - Fenton Pine Cone 7-1/2", 12-Scallop Plate - Not Often Seen
- _____ 267. Black Amethyst - Fenton 6-1/4" Persian Medallion Plate - Smooth Ext.
- _____ 268. Dark, Dark M - Fenton 7-3/4" Peacock and Dahlia Plate - Wow!
- _____ 269. M - Fenton 6-1/2" Sailboats Plate - Orange Tree Ext.
- _____ 270. A - Fenton 6-1/3" Vintage Grape Variant Plate - 4 Grape Clusters - Radium and Rare
- _____ 271. M - Fenton 7-5/8" Horse Medallion Plate - Great Mold Work
- _____ 272. Radium Electric W - Fenton 7-1/2" Leaf Chain Plate - OH MY!
- _____ 273. Very Scarce - Fenton 7-3/4" Lions Plate - Crisp Detail, Great Color
- _____ 274. W - Fenton 9-1/4" Peacock At Urn Plate - Stunning Blues
- _____ 275. B - Fenton 9-1/4" Peacock At Urn Plate - Purples and Golds
- _____ 276. Superb M - Fenton 9-1/4" Peacock At Urn Plate - Every Color Imaginable In Irid.
- _____ 277. Vas. - Fenton Water Lily 5-3/4", Ftd., Ruffled Berry Bowl - M. Overlay
- _____ 278. Sapphire - Fenton Two Flowers 6", Ftd., Ruffled Berry Bowl - Great Cabinet Piece
- _____ 279. Cherry Red - Fenton Water Lily 5-3/4", Ftd., Ruffled Berry Bowl - Very Desirable
- _____ 280. Red Amerbina Opal - Fenton 6-1/4" Blackberry Spray Ruffled Hat - Very Rare



- _____ 281. Red - Fenton Blackberry Spray Vt. 5-3/4", Ruffled Hat - First Rate!
- _____ 282. Red - Fenton Holly 6", 6 Ruffle Hat - Red and Blue Irid.
- _____ 283. M - Imp. File Creamer
- _____ 284. M - Imp. File Spooner
- _____ 285. M - Hobstar Band 5-3/4" Handled Celery Vase - Undervalued Beauty
- _____ 286. Fantastic Set - DeVilbiss Perfume Bottle and Atomizer - In Original Box - Paper Label From Store
- _____ 287. PO - Dugan Stippled Flower 7-1/4", Tri-Corner Bowl
- _____ 288. P - Westmoreland Louisa Nut Bowl - Lovely Shape
- _____ 289. P - Ruffled Spittoon Whimsey - Stemmed - No Pattern - Fenton (?)
- _____ 290. Sapphire - Dugan 7", 8 Ruffle Daisy Dear Bowl - First I've Seen
- _____ 291. Scarce Black Amethyst - Dugan Cherries 8-1/4", 10 Ruffle, Ftd., Bowl - Multi Electric
- _____ 292. Excellent W - Dugan Persian Garden 11-1/2", 6 Ruffle Collar Base Fruit Bowl
- _____ 293. Celeste B - Dugan 8-3/4", 10 Ruffle Double Stem Rose Deep Bowl - Super Stretch
- _____ 294. P - Dugan 5-3/4", 6 Ruffle Ski Star and Compass Bowl - A Little Gem
- _____ 295. Rare Deep P - Dugan Daisy Web 5-1/2", JIP, CRE Hat - Fine Color
- _____ 296. Deep A - Dugan Apple Blossom Twigs 8-3/4", 10 Ruffle Bowl - Indescribably Delicious Irid.
- _____ 297. W - Dugan 7" Grapevine Lattice Plate - Pastel Palette
- _____ 298. A - Dugan Persian Garden 6-1/4" Plate - BW Ext. - Rarely Offered
- _____ 299. Rare G - Fenton 10", Ball Ftd., 8 Ruffle Dragon and Strawberry Bowl - Wonderful Detail and Color
- _____ 300. Dark M Radium - Fenton 12", Ball Ftd. Stag & Holly Chop Plate
- _____ 301. PO - Dugan 7", CRE Ski Star and Compass Plate - Whole Back Is Opal!
- _____ 302. PO - Dugan Four Flowers 6-1/2" Plate - BW Ext. - 1-1/4" of Opal
- _____ 303. PO - Dugan 6-3/4", Flat Garden Path Vt. Plate - Soda Gold Ext.
- _____ 304. PO - Dugan Persian Garden 6-3/4" Plate - BW Ext.
- _____ 305. Rare PO Edge - Dugan Grapevine Lattice 6-3/4" Plate - Few Known
- _____ 306. A - Dugan 7" Fishscale and Beads Plate - Electric
- _____ 307. P - Dugan 7" CRE Honeycomb and Beads Plate - Scarce One
- _____ 308. P - Dugan 6-1/2", Tight CRE, Petal and Fan Plate - Small Gem
- _____ 309. P - Dugan 6-3/4" Wishbone and Spades Plate - Plain Ext. - Art Glass Irid.
- _____ 310. P - Dugan 6-1/2" Wishbone and Spades Plate - Awesome Electric Blue
- _____ 311. P - Dugan 10-1/2" Wishbone and Spades Chop Plate - Outstanding Example
- _____ 312. M - Jenkins 10-1/4" Cut Flowers Vase - Radium
- _____ 313. Teal - Westmoreland 8-1/2" Corinth Vase - Way Above Average
- _____ 314. M - Eda (or Brockwitz) Cylindrical 10-3/4" Rose Garden Vase - Scarce and Nice
- _____ 315. P - Dugan 11-1/4" Target Vase - Nice Color
- _____ 316. Deep B - DeSvenska (Sweden) 12" Vase - Very Uncommon
- _____ 317. PO - Dugan 10-1/4" Lined Lattice Vase - Unusually Nice Irid.
- _____ 318. Black Amethyst - Dugan Formal 7-1/4", JIP Vase - Splendid
- _____ 319. P - Dugan 4" Twigs Vase - Tight CRE - Always In Demand
- _____ 320. Red - Hansen Toothpick Holder - Contemporary - Internal Crack

BOOKING NOW

FOR 2005 CARNIVAL GLASS & QUALITY ANTIQUES
CALL TODAY

**NEED QUALITY ANTIQUES AND
CARNIVAL GLASS - CALL TODAY**

*"We don't want all the Business,
Just Yours."*

WE DO AUCTIONS RIGHT!!

NOTE: NEW ADDRESS

For Free Color Catalogs & Information Write:
Mickey Reichel
18350 Hunters Ridge Ct., Boonville, MO 65233-2971
or Call: 660-882-5292 days or 660-882-5283 evenings
E-mail: mreichel@awk-shn.com

SPECIAL NOTE:

NO SUNDAY CALLS, PLEASE!
Winning Absentee Bidders will be contacted
Monday through Wednesday of the week following
the Auction!

Thank You!

2004 CALENDAR

October 15 & 16, 2004

AIR CAPITAL CARNIVAL GLASS CONVENTION
AT WICHITA, KANSAS

November 13, 2004

CARNIVAL GLASS AUCTION
AT BOONVILLE
OKLAHOMA COLLECTION

January 8, 2005

14TH ANNUAL NEW YEAR'S EXTRAVAGANZA

