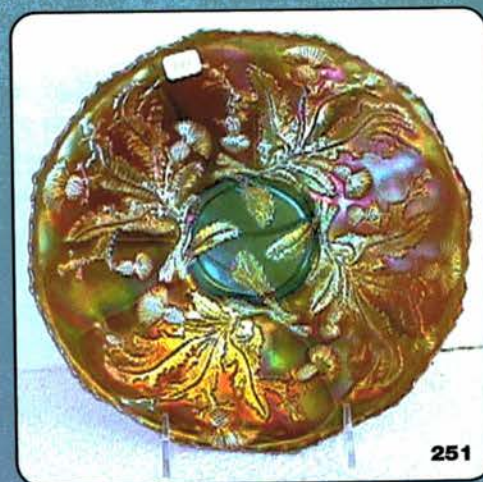
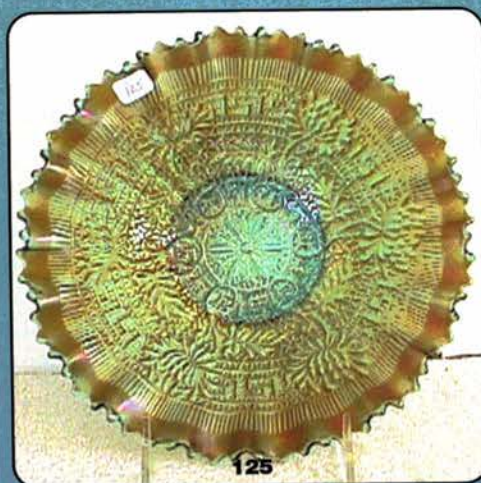


Pacific Northwest Carnival Glass Club Convention

AUCTION

Saturday, August 14th, 2004 -- 9:30 A.M.



Crowne Plaza Hotel
14811 Kruse Oaks Drive
Lake Oswego, Oregon
Call (503) 624-8400 for reservations

Jim and Jan Seeck

Seeck Auctions 641-424-1116
PNWCGC Convention Auction

SATURDAY, AUGUST 14th, 2004 -- 9:30 A.M.

Crowne Plaza Hotel – Lake Oswego, OR (Portland)

NO BUYERS PREMIUM

OPEN TO THE PUBLIC

Don't forget to check out our website for lots of pictures!

www.seeckauction.com

Also, please email us and we will put you on our email mailing list for auction notices.

Reservations can be made by calling the hotel directly at 503-624-8400. Ask for reservations and mention the "PNWCGC" Convention. If you have questions about the convention, contact Bev Franzen at: 503-263-1611 or Debra Remmen at: 503-256-1226.

Preview: Time to be determined later.

Terms: Cash or Check with proper I.D.

ABSENTEE BID POLICY

1. Write-in bids will be accepted by sending the numbers of the item(s) desired and the amount bid on each to:
Seeck Auctions, PO Box 377, Mason City, Iowa 50402.
2. If known by Auction Company, bids may be done over the telephone. (641)424-1116.
3. You may **email** your bids to us: **jimjan@seeckauction.com** Continue to include the numbers of the item(s) you would like to bid on and amount bid on each, please include your telephone number.
4. There is a \$5 handling charge for each successful bid. Shipping and insurance charges are additional.
5. Bidders will be notified by phone/email if their bid(s) are successful. This will be done 1 - 3 days after the auction.
6. Please have all bids in by **Wed., August 11th**. All bids (by mail, phone or **email**) after this date may not be carried out.
7. Please place bids in the following increments: \$1 to \$300 - \$5 increments \$300 up - \$25 increments.
8. **If you do not receive an item that sold for less than your bid, assume we cancelled your bid because the piece of glass had below average color, manufacture problem, damage or was not listed correctly.**
9. Auction results are posted on our website within 5 days of the auction (depending on drive time home from the sale.) Also results are available in many of the club newsletters.

- | | |
|--|---|
| ___ 1. Grapevine Lattice 6" ruffled bowl - white | ___ 14. Miniature Morning Glory 5" vase - marigold |
| ___ 2. Wreath of Roses rose bowl - marigold | ___ 15. Miniature Morning Glory 7 1/2" vase - clambroth |
| ___ 3. Stork & Rushes mug - marigold | ___ 16. Fern Brand Chocolates advertising double handgrip or card tray shaped dish - amethyst - writing is square to the handgrip, very pretty example |
| ___ 4. Flute toothpicks (2) - purple - choice | ___ 17. Singing Birds tumbler - green |
| ___ 5. Flute toothpick - green | ___ 18. Singing Birds tumbler - purple - silvery |
| ___ 6. Flute toothpick - marigold | ___ 19. Singing Birds tumbler - marigold |
| ___ 7. Corinth 10" vase - amethyst | ___ 20. Poppy Show ruffled bowl - ice green - extremely rare color & very nice, desirable |
| ___ 8. Corinth 9" vase - aqua | ___ 21. Poppy Show ruffled bowl - blue - very hard to find color, rare & desirable |
| ___ 9. Corinth 9 1/2" vase - olive green - odd color | ___ 22. Poppy Show ruffled bowl - marigold - pretty, scarce |
| ___ 10. Concord 9" plate - amethyst - very pretty plate, super scarce & highly desirable | ___ 23. Luster Rose ftd fernery - blue - scarce color |
| ___ 11. Concord 9" plate - marigold - maybe the hardest color to get, very rare & desirable | |
| ___ 12. Miniature Morning Glory 6" vase - smoke | |
| ___ 13. Miniature Morning Glory 6 1/2" vase - purple | |

- ___ 24. Luster Rose ftd fernery - violet - another scarce color
- ___ **25. Raspberry water pitcher - ice green - super, super rare, not many known, pretty example, WOW!**
- ___ 26. Fenton's Grape & Cable IC shaped spt ftd bowl - green
- ___ 27. Fenton's Grape & Cable spt ftd deep round bowl - marigold
- ___ **28. Old Rose Distillery Stippled Grape & Cable 9" plate - green - super pretty plus scarce**
- ___ 29. Fern ruffled hatshape - marigold
- ___ **30. Tree Trunk 12" mid size vase - blue - super pretty & very scarce color**
- ___ 31. Octagon small size water pitcher - marigold
- ___ 32. Imperial Grape 9" ruffled bowl - marigold
- ___ 33. Four Seventy Four 8 pc. punch set - marigold - nice
- ___ 34. Long Thumbprint JIP 7 1/2" vase - green - scarce
- ___ **35. Grape & Cable large size fruit bowl or orange bowl - ice green - extremely rare item, don't know of many of these, pretty color, rare! rare!**
- ___ 36. Leaf Columns 6 1/2" squatty vase - purple - nice
- ___ 37. Leaf Columns 6 1/2" squatty vase - green - pretty
- ___ 38. Leaf Columns 5 1/2" squatty vase - marigold - pretty
- ___ 39. Grape Delight ftd rose bowl - amethyst
- ___ **40. M'burg Deep Grape square shaped compote - amethyst - super rare item & super nice, satin**
- ___ 41. Tree Trunk 7 1/2" squatty vases (2) - green - choice
- ___ 42. Tree Trunk 6 1/2" squatty vase - purple
- ___ 43. Tree Trunk 7" squatty vases (2) - marigold - choice
- ___ 44. Premium candlesticks - marigold
- ___ **45. N's Peacock at Urn master IC bowl - marigold - super pink irid., a real beauty**
- ___ **46. N's Peacock at Urn master IC bowl - white - minor nick on base**
- ___ 47. April Showers 11 1/2" vase - white - super pretty example, very scarce vase
- ___ 48. April Showers 10 1/2" vase - amethyst - has Peacock Tail interior, pretty
- ___ 49. April Showers 9" vase - green - has Peacock Tail interior
- ___ **50. Vintage 9" plate - blue - extremely rare Fenton plate, not many known, also very nice**
- ___ **51. Vintage 9" plate - marigold - has pink irid., burst on base, rare**
- ___ 52. Wide Panel 8" stretch glass plate - red, scarce
- ___ 53. Wide Panel 8" plates (10) - marigold - choice
- ___ 54. Four Seventy Four water goblet - marigold
- ___ **55. N's Grape & Cable spt ftd 9" plate - ice green - very rare & nice**
- ___ 56. Fenton's Grape & Cable spt ftd 9" plate - green - very pretty, very flat
- ___ 57. Puzzle bon bon - white - pretty, minor pinpoint on base
- ___ 58. Fenton #857 Melon Rib flared rolled bowl - ice blue
- ___ 59. Fenton #857 Melon Rib flared rolled bowl - ice green
- ___ **60. M'burg Seacoast pin tray - marigold - rare, super nice, radium**
- ___ 61. Twins fruit bowl & base - marigold
- ___ 62. European 15" enameled stein - light marigold
- ___ 63. European 6 1/2" enameled ftd tumblers (2) - light marigold - choice
- ___ 64. Diamond Points 5 1/2" squatty vase - purple - minor heat check in base
- ___ **65. Stippled Three Fruits spt ftd ruffled bowl - lime green opal - very, very, rare bowl, has pretty marigold irid.**
- ___ **66. Three Fruits spt ftd ruffled bowl - purple - super pretty**
- ___ 67. Fenton's Stippled Rays 3 in 1 edge bowl - green
- ___ 68. Enameled Cherries & Little Flowers 7 pc water set - blue - nice set
- ___ 69. Star Medallion milk pitcher - marigold - nick on edge
- ___ **70. Tree Trunk 9 1/2" vase - aqua opal - super nice, minor nick on base**
- ___ **71. Tree Trunk 10" vase - blue - very rare color & super**
- ___ 72. Tree Trunk 10 1/2" vase - amethyst - nice

- ___ 73. Blackberry Open Edge ruffled hat - green
- ___ 74. Nice Carnival Glass beaded purse
- ___ **75. Rose Show ruffled bowl - emerald green - very hard color to find, nice, chip on rose**
- ___ 76. Panther ruffled sauce - marigold
- ___ 77. Fanciful 3 in 1 edge bowl - white - nice
- ___ 78. Corinth 9" JIP vase - amethyst
- ___ 79. Corinth 9" JIP vase - marigold
- ___ **80. Plume Panels 10" vase - red - cherry color & hard to find, a super great vase!**
- ___ 81. Plume Panels 12" vase - blue - super pretty
- ___ 82. Plume Panels 11 1/2" vase - green - a beauty
- ___ **83. Fanciful 9" plate - blue - very pretty plate, a dandy**
- ___ 84. Strawberry PCE bowl w/plain back - purple - pretty
- ___ **85. Wishbone & Spades 6" plate - purple - super, scarce**
- ___ 86. Butterfly & Berry 5 pc. water set - marigold - scarce
- ___ 87. Pansy pickle dish - smoke - pretty
- ___ 88. Ten Mums tumbler - marigold - super
- ___ 89. Graceful compote or 5" vase - green
- ___ **90. N's Grape & Cable centerpiece bowl w/sides straight up - green - super pretty & very rare color**
- ___ 91. Persian Medallion bon bon - red - minor nicks edge
- ___ 92. Blackberry Spray ruffled hatshape - red - scarce
- ___ 93. Open Rose ruffled bowl - amber - pretty
- ___ 94. Open Rose ruffled bowl - marigold
- ___ **95. Tree Trunk 13" elephant foot vase - purple - extremely rare vase, not many sold lately, a bit silvery**
- ___ 96. Waffle Block hldd basket - marigold
- ___ 97. Dandelion mug - aqua opal - butterscotch & nice
- ___ 98. Wide Rib 6" squatty vase - peach opal - has 6" wide mouth
- ___ 99. Ftd Prism Panels vase - marigold
- ___ **100. Hearts & Flowers PCE bowl w/ribbed back - lime green - super pretty example w/nice irid., a dandy**
- ___ **101. Hearts & Flowers PCE bowl w/ribbed back - amethyst - very pretty irid., also a dandy**
- ___ 102. Wreathed Cherry tumbler - white - has red cherries
- ___ **103. M'burg Hobstar & Feather giant rose bowl - amethyst - super pretty, large chip off base, rare**
- ___ 104. Stretch glass rose bowl - red
- ___ **105. Heart & Vine 9" plate - blue - scarce & pretty**
- ___ 106. Miniature Blackberry compotes (2) - blue - choice
- ___ **107. Peacock at the Fountain ruffled compote - ice blue - very scarce & pretty, highly desirable**
- ___ **108. Florentine 10" candlesticks - red - extremely rare color for these, one of the sticks has been damaged & repaired**
- ___ 109. Acorn deep round bowl - blue
- ___ **110. Wishbone ftd ruffled bowl - ice green - dark ice green color, scarce, a dandy**
- ___ **111. Wishbone ftd ruffled bowl - ice blue - dark color, pretty, very scarce**
- ___ **112. Wishbone ftd ruffled bowl - white - super pretty, scarce**
- ___ 113. Wishbone ftd ruffled bowl - green
- ___ 114. Wishbone ftd ruffled bowl - purple - nice
- ___ 115. Wishbone ftd ruffled bowl - marigold - nice
- ___ **116. Fisherman's mug - peach opal - super opal on this very rare mug**
- ___ 117. Garland rose bowl - green - kind of pretty for these
- ___ 118. Floral & Grape water pitcher - blue - very nice, scarce
- ___ 119. Floral & Grape tumbler - blue
- ___ **120. Stippled Grape & Cable 8 pc. small size punch set - marigold - very rare stippled, beautiful set**
- ___ 121. Ripple 8 1/2" vase - purple - 2 1/2" base, pretty, minor nick on edge
- ___ 122. Ripple 7 3/4" vase - marigold - has 2 1/2" base
- ___ **123. Rose Garden 7 1/2" middle sized letter vase - marigold - very scarce, nice**

- ___ 124. N's Wide Panel 13" midsize vase - marigold
- ___ **125. Embroidered Mums PCE bowl w/ribbed back - sapphire - extremely rare bowl, one of just a few known, WOW!**
- ___ 126. M'burg Diamonds tumbler - amethyst
- ___ 127. M'burg Diamonds tumbler - marigold - pretty
- ___ **128. Stippled Peacocks PCE bowl w/ribbed back - blue - very scarce stippled & nice**
- ___ 129. Holly ruffled hatshape - marigold
- ___ 130. Ribbed Optic crimped edge ruffled bowl in metal brides basket holder - peach opal
- ___ 131. Diamond & Column 12" vase - green
- ___ **132. Good Luck ruffled bowl w/ribbed back - aqua opal - nice opal, light on irid., one point chipped off**
- ___ **133. Good Luck ruffled bowl w/ribbed back - blue - electric & super**
- ___ 134. Luster Rose 8" ftd round bowl - amber
- ___ **135. Regal Iris Gone With the Wind lamp - marigold on milk glass - extremely rare lamp, top globe has 2 small hairlines but still intact**
- ___ 136. Mary Ann vase - amethyst - nice
- ___ 137. Mary Ann vase - marigold
- ___ **138. Waterlily ftd ruffled sauce - red - scarce & desirable, very nice**
- ___ 139. Crabclaw water pitcher - marigold
- ___ **140. M'burg Peacock at Urn 10" ruffled bowl - blue - extremely rare color & super nice, satin**
- ___ 141. Fenton's Thin Rib 15" vases (2) - blue - choice
- ___ **142. Horse Medallion ftd deep round bowl - lime green w/marigold overlay - nice**
- ___ **143. N's Corn vase - marigold - dark & super, one kernel has minor spot of epoxy**
- ___ 144. Luster rose 10" round bowl - amber
- ___ **145. Hearts & Flowers ruffled bowl w/ribbed back - aqua opal - extremely rare & pretty**
- ___ **146. Hearts & Flowers ruffled bowl w/ribbed back - ice blue - nice, scarce**
- ___ 147. Concave Diamonds tumble up - russet - nice
- ___ 148. Horse Medallion ftd rose bowl - marigold
- ___ 149. Ripple 16" vase - smoke - has 3 7/8" base - nick on rib, pretty
- ___ **150. Poinsettia ftd ruffled bowl w/ribbed back - ice blue - very rare bowl & nice**
- ___ 151. Stag & Holly lg size ftd ruffled bowl - smokey blue - very unusual bowl
- ___ 152. Stag & Holly lg size ftd ruffled bowl - pink - has marigold overlay
- ___ 153. Stag & Holly lg size ftd ruffled bowl - marigold - nice
- ___ 154. Dugan stretch glass cvd candy jar - celest blue
- ___ **155. N's Peacock at Urn ruffled bowl, made from master IC bowl - marigold - super pretty & dark**
- ___ 156. Singing Birds mug - marigold
- ___ 157. Peacock & Dahlia 7" IC shaped bowl - blue - pretty
- ___ 158. Peacock & Dahlia 7" IC shaped bowl - marigold - nice
- ___ **159. Wreath of Roses punch bowl & base - green - has plain interior, ruffled top, scarce**
- ___ **160. Peacocks ruffled bowl w/ribbed back - lime green opal - extremely rare bowl, has several points off**
- ___ 161. N's Eight Sided bushel basket - blue - nice
- ___ 162. N's Eight Sided bushel basket - marigold - nice
- ___ 163. M'burg Whirling Leaves ruffled bowl - amethyst - radium
- ___ **164. M'burg Wild Rose lamp - goofus glass - not carnival, not many of these around!**
- ___ **165. M'burg Poppy round compote - marigold - radium & nice, scarce**
- ___ 166. Dugan Cherries IC shaped bowl - purple
- ___ **167. Blackberry Block tankard water pitcher - marigold - scarce & very nice**
- ___ 168. Florentine small size candlesticks - celest blue
- ___ 169. M'burg Hobstar & Feather bowls - crystal - 3 different sizes, choice
- ___ **170. Sunflower spt ftd ruffled bowl - ice blue - dark ice blue w/super irid., a beauty**

- ___ 171. Sunflower spt ftd tightly ruffled bowl - amethyst
- ___ 172. English covered hen on nest - blue
- ___ 173. Imperial Grape water pitcher - aqua - scarce color
- ___ 174. Rose Garden rose bowl - marigold - scarce
- ___ **175. Hearts & Flowers 9" plate w/ribbed back - purple - super pretty**
- ___ **176. Hearts & Flowers 9" plate w/ribbed back - marigold - very scarce, highly desirable**
- ___ 177. Leaf & Beads rose bowl - aqua opal - scarce, nice
- ___ 178. Ripple 10 1/2" vase - teal - scarce, pretty
- ___ 179. Open Rose ruffled bowl - marigold
- ___ **180. M'burg Trout & Fly square shaped bowl - amethyst - satin & super, minor nick on base**
- ___ 181. Beaded Shell tumblers (2) - amethyst - choice
- ___ **182. Wishbone 10" PCE bowl - green - scarce, nice**
- ___ 183. Concave Diamonds 7 pc. water set w/lid - celest blue - scarce, nice
- ___ 184. Plaid ruffled bowl - marigold - scarce pattern
- ___ **185. Morning Glory 13" funeral vase - purple - super pretty irid., has 9" wide mouth**
- ___ 186. Vineyard water pitcher - marigold
- ___ 187. Vineyard tumbler - marigold
- ___ 188. Fenton's Peacock at Urn 9" plate - marigold - minor pinpoint on point
- ___ 189. Ribbon Tie 3 in 1 edge bowl - blue - nice
- ___ **190. Orange Tree standard size mug - red - pretty**
- ___ 191. Beaded Bullseye 11" vase - purple - pretty
- ___ **192. M'burg Fleur Des Lis dome ftd rose bowl - amethyst - extremely rare, one of just a few known, does have nicks on sawtooth base, WOW**
- ___ 193. Diamond Rib 8" vase - amethyst
- ___ 194. Diamond Rib 11" vase - marigold
- ___ **195. Stippled Strawberry PCE bowl w/ribbed back - blue - scarce & very desirable, nice**
- ___ 196. Open Rose 9" plates (2) - marigold - choice
- ___ 197. Open Rose 9" plate - green
- ___ 198. Grape & Cable 11" ruffled bowl w/BW back - marigold - super pretty
- ___ 199. N's Thin Rib 6 1/2" squatty vase - purple
- ___ **200. M'burg Courthouse IC shaped bowl - amethyst - large chip out of base, radium**
- ___ 201. N's Thin Rib 9" vase - green
- ___ 202. N's Thin Rib 11" vase - olive green
- ___ 203. N's Thin Rib 8" vase - marigold
- ___ 204. Stag & Holly lg size IC shaped ftd bowl - marigold - nice
- ___ **205. Stippled Three Fruits 9" plate w/ribbed back - purple - fantastic, beautiful!**
- ___ 206. Wishbone tumbler - purple
- ___ 207. Wishbone tumbler - green
- ___ **208. M'burg Sunflower pin tray - amethyst - scarce, nice**
- ___ 209. Luster Rose water pitcher - helios green
- ___ 210. M'burg Nesting Swan ruffled bowl - marigold - radium, dark & nice
- ___ 211. Fashion 12 pc. punch set - marigold
- ___ 212. Poppy Show vase - green w/white cased inside - Fenton contemporary
- ___ 213. Poppy Show vase - emerald green - Fenton contemporary
- ___ 214. Heavy Iris 12" crimped edge vase - purple - contemporary, this is a pitcher w/o handle
- ___ **215. M'burg Trout & Fly 3 in 1 edge bowl - amethyst - satin, nice**
- ___ 216. Octagon lg size tumbler - green - very scarce
- ___ 217. Octagon lg size tumbler - marigold
- ___ **218. The Great House of Isaac Benesch & Sons Advertising ruffled bowl - amethyst - scarce**
- ___ 219. Diamond Points 10 1/2" vase - amethyst
- ___ **220. Fanciful ruffled bowl - amethyst - scarce, nice**
- ___ 221. Long Hobstar punch bowl top w/Fashion punch bowl base - marigold
- ___ 222. Fruits & Flowers bon bon - marigold
- ___ 223. N's Bushel Basket - ice green - scarce
- ___ 224. Raspberry gravy boat - purple - minor pinpoint on toe
- ___ **225. Poppy Show vase - marigold - pink & yellow irid., scarce**

- ___ 226. Swan salt - celest blue
- ___ 227. Swan salt - clear glass - no iridized, old
- ___ **228. Embroidered Mums ruffled bowl w/ribbed back - blue - scarce, nice**
- ___ 229. Rambling Rose tumbler - blue - pretty
- ___ **230. Captive Rose 9" plate - blue - has fantastic green & amethyst irid.**
- ___ 231. Butterfly & Berry creamer - green - nick in pattern
- ___ **232. Two Flowers lg size ftd ruffled bowl - lime green - marigold overlay, very scarce, nice**
- ___ 233. Basketflower hatpin & Cherries hatpin - both purple - choice
- ___ 234. Pansy ruffled bowl - purple - nice
- ___ **235. Rose Garden 9" large size letter vase - blue - scarce & very desirable**
- ___ 236. N's Stippled Rays ruffled bowl - purple
- ___ 237. Little Fishes IC shaped ftd master berry bowl - blue - scarce, nice
- ___ 238. Ribbed 8" plates (7) - celest blue - choice
- ___ 239. Wide Panel 8" & 10" plates (2) - ice green stretch - choice
- ___ **240. Fern Brand Chocolates handgrip plate - amethyst - very nice**
- ___ 241. Stippled Rays 7" ruffled bowl - red
- ___ 242. Acorn Burrs sauces (2) - amethyst - choice
- ___ 243. Heavy Iris tankard water pitcher - marigold - nice
- ___ 244. Large Fireflies buttons (2) - purple - choice
- ___ **245. Stork & Rushes mug - blue - extremely rare color, nice**
- ___ 246. Grape hdd sandwich tray - smoke
- ___ 247. Stag & Holly lg size deep ruffled bowl - pink - has marigold overlay, scarce
- ___ 248. Three Fruits 9" plate w/BW back - green
- ___ 249. Wild Rose ftd nut bowl - purple - pretty
- ___ 250. Three Fruits PCE bowl w/BW back - green
- ___ **251. Thistle 9" plate - green - super pretty plate & extremely rare!**
- ___ 252. Contemporary Swans (6) - choice
- ___ 253. Carnival creamer & sugars (2) - marigold - choice
- ___ 254. Smooth Panels bowls (3) - colors vary - choice
- ___ 255. Frosted Block 9" plate, rose bowl & deep bowl - clambrth - choice
- ___ 256. All Tumblers: Maple Leaf - purple; Rambler Rose - marigold; Luster Rose - marigold; G&C (3) - marigold; Octagon (flat) - marigold - all sold choice
- ___ 257. All Punch Cups: M'burg Hobstar & Feather - marigold; Memphis - purple; Waffle Block - marigold; Imperial Grape - marigold; G&C - marigold; Orange Tree - blue; Stork & Rushes - amethyst; Peacock at the Fountain - purple; Wreath of Roses (Persian Med. interior) - amethyst - all sold choice.
- ___ 258. All Wine glasses: Sailboat - marigold; Kings Crown - marigold; Imperial Grape - lavender, purple, green & marigold - all sold choice
- ___ 259. Lot of misc. Carnival Glass
- ___ 260. Lot of Contemporary Carnival Glass - choice
- ___ 261. Carnival Glass books - choice

Jim and Jan Seeck **Seeck Auctions** 641-424-1116

Seeck Auctions

P.O. Box 377
Mason City, Iowa 50402

PRESORTED
FIRST-CLASS MAIL
U.S. POSTAGE PAID
MINNEAPOLIS, MN
PERMIT NO. 2853



40



95

*****AUTO**MIXED AADC 553

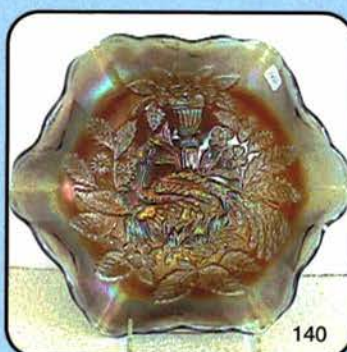
Lee Markley
PO Box 306
Mentone, IN 46539-0306



10



120



140



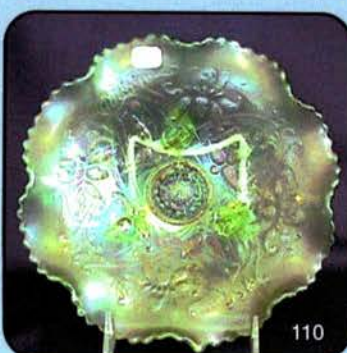
192



145



35



110



150