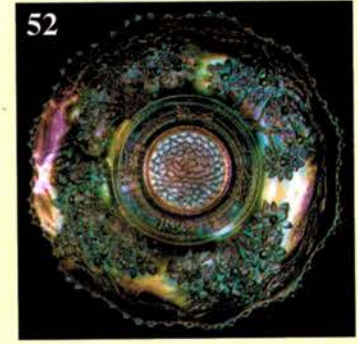
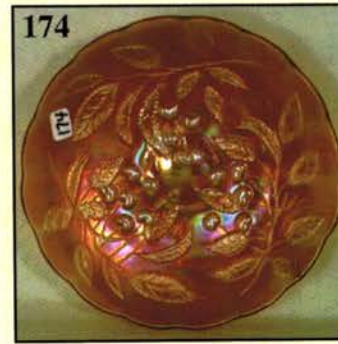
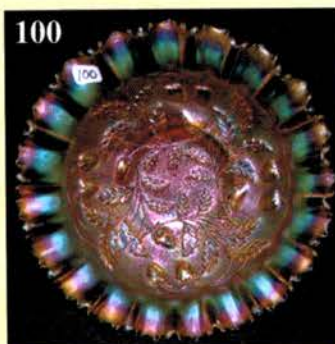
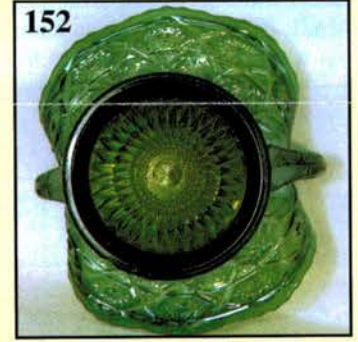
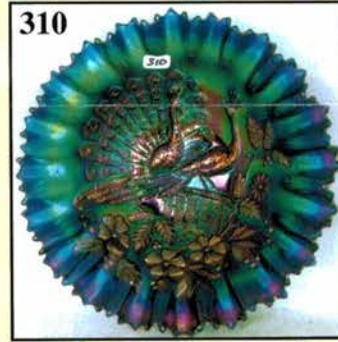
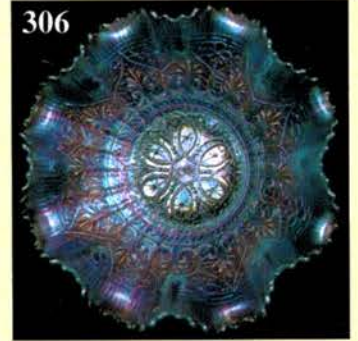
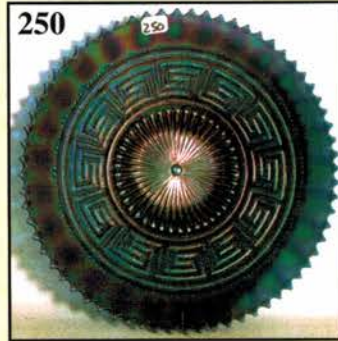
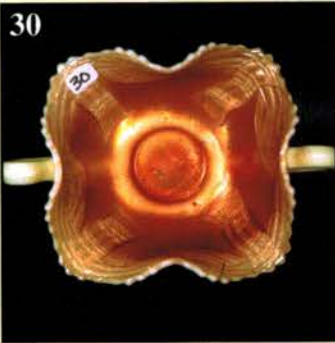


www.AWK-SHN.com

CARNIVAL GLASS AUCTION

Saturday, August 7, 2004 9:00 a.m. C.D.T.

★ BULLOCK COLLECTION FROM NORTH CAROLINA ★



Held By the Mickey Reichel Antique & Auction L.C.

Office: 660-882-5292 • Home: 660-882-5283

👉 **NEW WEB SITE: www.AWK-SHN.com**

E-mail: mreichel@AWK-SHN.com

Held Inside the Mickey Reichel Auction Center

1 Mile North of I-70 on Hwy. 5, Exit 101, Boonville, Missouri • 20 Miles West of Columbia, MO on I-70



Preview Friday 12 p.m. - 5 p.m. and 7:30 a.m. - 9:00 a.m. Day of Auction



TERMS: Cash or Good Check, VISA and MasterCard accepted.

3% Clerking Fee on all purchases except for payment of cash or check. Proper I.D. required.

WEB SITE: www.AWK-SHN.com

ABSENTEE BID POLICY:

WRITE IN BIDS: If you are unable to attend the auction, we will be happy to accept absentee bids which must be received by THURSDAY, AUGUST 5, 2004. Don't Delay. E-Mail: mreichel@AWK.SHN.com

FOR AUCTION PRICE RESULTS: Send \$3.00 and Large S.A.S.E. to 18350 Hunters Ridge Ct., Boonville, MO 65233-2971

PLEASE NOTE: There is a **\$5 handling charge for each successful bid which will be added to the selling price** for all write-in bids. This is in addition to the cost of postage, insurance and packing. Your write-in bid will be entered just as if you are present and bidding. **Successful bidders will be notified in 1 to 3 days by the auctioneer (so be sure to include your phone number).** Direct mail bids to Auctioneer Mickey Reichel, 18350 Hunters Ridge Ct., Boonville, MO 65233-2971. Terms: Cash or Check accepted with proper I.D. and Social Security Number and References. Announcements made day of the auction supercede all printed material. Not Responsible for Accidents or Sold Items.

No return on any items once they leave the Auction Center (No Exceptions).****

Call for additional information: 660-882-5292 days or 660-882-5283 evenings before 9:00 p.m.

FAX: 660-882-5292 (evening hours start FAX transmission after beep)

MAIL BIDS: Items are bid on in perfect condition with average or above iridescence OR as listed in the brochures. Bids will not be carried out when damage on an item has been found during the auction.

PEOPLE PRESENT AT AUCTION ARE RESPONSIBLE FOR FINDING ANY PINHEADS, WEAR, SPOTTINESS, MANUFACTURER'S DEFECTS OR ANY OTHER MINOR FLAWS, ETC. *****

NOTE: Read each line, as we have accentuated the type of no particular piece, all are special.

Make Reservations EARLY at one of these local motels:

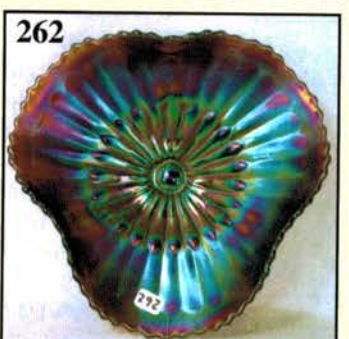
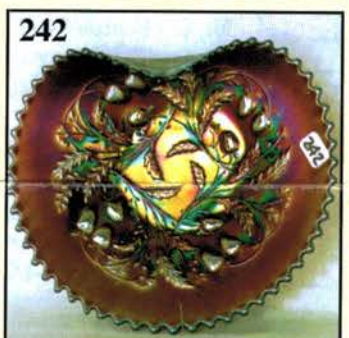
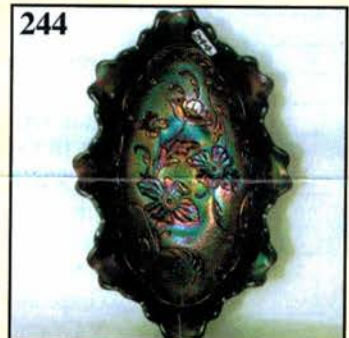
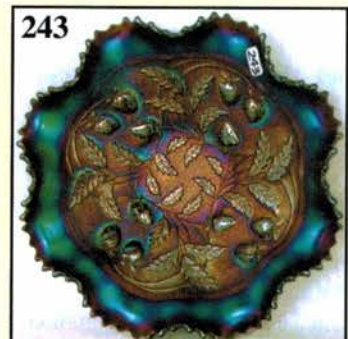
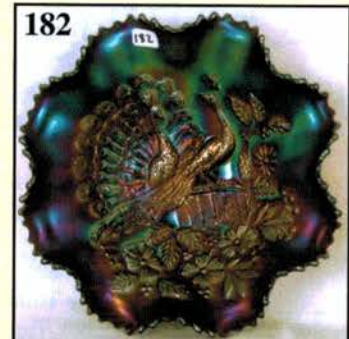
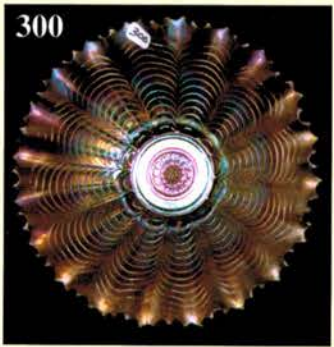
Days Inn: 660-882-8624 • Comfort Inn: 660-882-5317 • Super 8: 660-882-2900 • Holiday Inn: 660-882-6882

Auction Consists of Rarity, Great Irid. and Variety

THANK YOU FOR ATTENDING TODAY

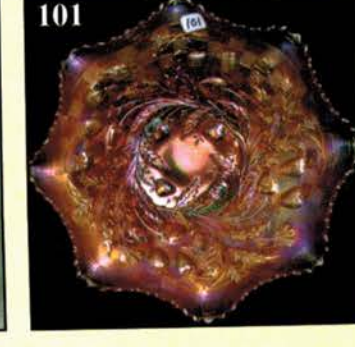
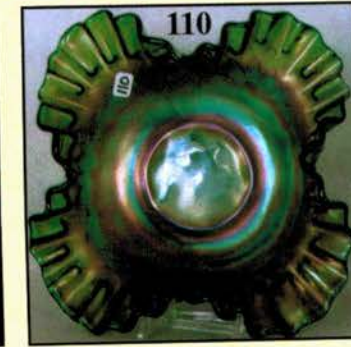
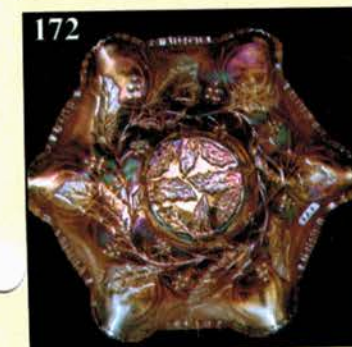
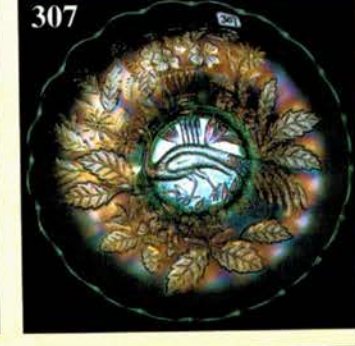
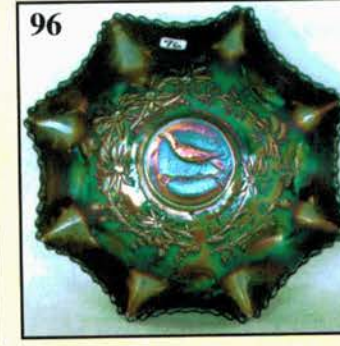
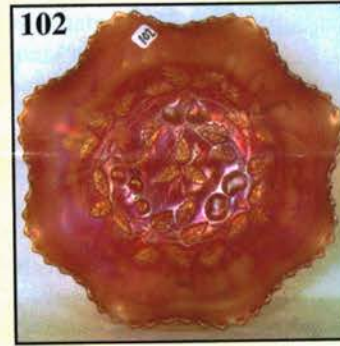
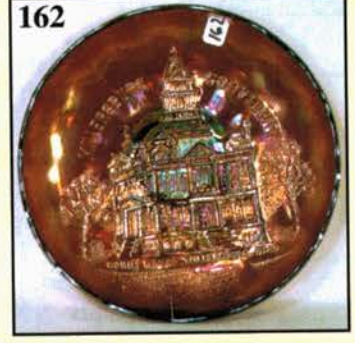
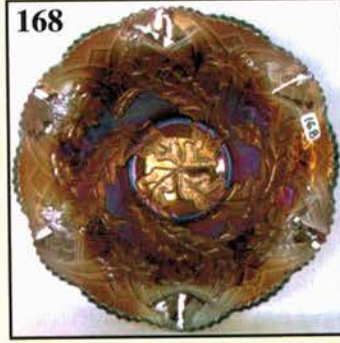
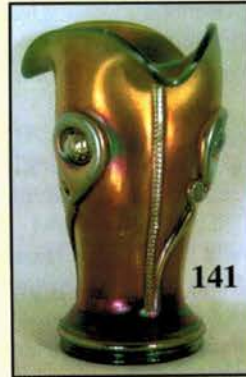
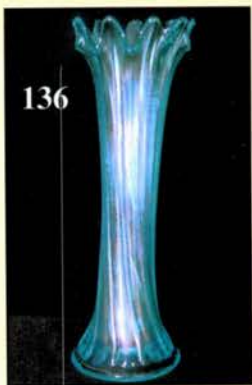
- | | |
|---|---|
| _____ 1. M - Dugan Wreath of Roses Rosebowl | _____ 11. P - Dugan Tri-Corner Holly and Berry Nappy or Gravy Bowl |
| _____ 2. Scarce B - Dugan 9", 10 Ruffle Windflower Bowl | _____ 12. Pastel M - Dugan Grape Delight Nut Bowl - Normal Feet - Pretty! |
| _____ 3. M - Dugan 9", 10 Ruffle Windflower Bowl | _____ 13. B - Fenton 8" ICS Peacock at Urn Bowl - Silvery |
| _____ 4. Vaseline - Dugan Coin Spot Compote - Odd Color! - Does <u>Not</u> Glow but Rare Item | _____ 14. B - Dugan 8-1/2" Apple Blossom Twigs Plate - Silver Finish |
| _____ 5. M - Dugan Cherries 10-Ruffle, Ball Ftd. Bowl - Pattern Inside & Out | _____ 15. M - Fenton 10", 6 Ruffle Little Flowers Bowl |
| _____ 6. PO - Dugan 5-1/4" Round Garden Path Bowl - Soda Gold Ext. | _____ 16. B - Fenton 10-1/2" Ball Ftd., Ruffled Stag and Holly Bowl - Silver Finish |
| _____ 7. M - Dugan 7-1/4" Ruffled Apple Blossoms Bowl | _____ 17. G - Fenton 9" Leaf Chain Plate - Silver Finish |
| _____ 8. PO - Dugan 7-3/4" Ruffled Holly and Berry Bowl | _____ 18. G - Fenton 9-1/4" Spat Ftd. Grape and Cable Plate |
| _____ 9. Radium M - Dugan 8" Round Double Stem Rose Bowl | _____ 19. M - Fenton 9-1/4" Spat Ftd. Grape and Cable Plate |
| _____ 10. PO - Dugan 9-1/2" Banana Shape Stippled Petals Bowl - Flake on Base - Lots of Opal | _____ 20. Clambroth - Fenton 8-3/4", 6 Ruffle Leaf Chain Bowl |
| | _____ 21. M - Fenton 4-1/2" Kittens Plate - Wear In Center |

- _____ 22. **M - Fenton Kittens Toothpick Holder/Vase - Base Bruise, Still Neat**
- _____ 23. M - Fenton Kittens 4-1/2" Bowl - 4 Sides Up
- _____ 24. **Powder B - Fenton 7" ICS Acorn Bowl - Marie Nicks - Neat Color**
- _____ 25. Scarce A - Fenton 6-1/4" Stippled Rays Round Bowl
- _____ 26. **B - Fenton 8" ICS, Collar Base Dragon & Lotus Bowl - Great Example**
- _____ 27. B - Fenton Butterfly Bonbon - 4 Sides Up - Flea Bite On Marie
- _____ 28. **Rare A - Fenton 9-1/2" Ruffled, Ftd. Butterfly & Berry Master Bowl - Scarce**
- _____ 29. B - Fenton 9", 3 in 1 Low Ruffled Ribbon Tie Bowl/Plate - Rim Nick
- _____ 30. **Ultra Rare Marigold Over Custard - Fenton Prayer Rug Bonbon - Super Find - The Real Thing**
- _____ 31. M - Fenton Peacock Tail Card Tray Bonbon
- _____ 32. **G - Fenton Butterfly Card Tray Bonbon**
- _____ 33. M - Fenton 8-3/4" Ruffled Collar Base Chrysanthemum/Windmill Bowl
- _____ 34. **B - Fenton 9" Ruffled Persian Medallion Bowl - Scarce Bearded Berry Ext. - Few Known**
- _____ 35. A - Fenton 9", 6 Ruffle Thistle Bowl - Uncommon Color
- _____ 36. **G - Fenton 8-1/2", 3 in 1 Edge Captive Rose Bowl**
- _____ 37. Dark M - Fenton 9" Ruffled Holly Bowl
- _____ 38. **G - Fenton 9" Ruffled Holly Bowl**
- _____ 39. B - Fenton 9-1/4", 3 in 1 Edge Holly Bowl
- _____ 40. **Yellow Vas. - Fenton 7-1/2", 8 Ruffle Grape and Cable Bowl - M. Overlay - Extra Color**
- _____ 41. Yellow Vas. - Fenton JIP, Ftd. Horse Medallion Bowl - M. Overlay - Real Yellow Feet
- _____ 42. **M - Fenton 7-1/2" Horse Medallion Plate - Nice Details**
- _____ 43. M - Fenton 7-1/2", 8 Ruffle Horse Medallion Bowl
- _____ 44. **M - Fenton 7-1/2" Blackberry Open Edge Basket - 2 Sides Up**
- _____ 45. Rich M - Fenton 8-3/4" Collar Base, Ruffled Peacock and Grape Bowl
- _____ 46. **B - Fenton 8", 8 Ruffle Spat Ftd. Two Flowers Bowl - Superb!**
- _____ 47. M - Fenton 6-1/4" Persian Medallion Plate - Plain Ext. - Great Color
- _____ 48. **B - Fenton 6-1/4", 12-Sided Pine Cone Plate**
- _____ 49. B - Fenton 9-1/4" Three Fruits Plate - Nice Example
- _____ 50. **G - Fenton 9-1/4" Three Fruits Plate - Scarce Color**
- _____ 51. A - Fenton 9-1/4" Three Fruits Plate - Also Very Fine
- _____ 52. **Spectacular W - Fenton 9-1/2" Orange Tree Plate - Stretchy & Sweet! - Great One**
- _____ 53. B - Fenton Grape and Cable 10" Fruit Bowl - Plain Int. - Scarce
- _____ 54. **M - Fenton Grape and Cable 10" Fruit Bowl - Persian Medallion Int. - Extra Nice Color**
- _____ 55. Beautiful B - Fenton 10" Orange Tree Ftd. Fruit Bowl
- _____ 56. **B - Fenton Thistle Banana Boat - Loaded with Electric**
- _____ 57. M - Imp. Poinsettia Milk Pitcher - Great Irid.
- _____ 58. **Teal - Imp. Fieldflower Water Pitcher - Glows - Tough Color to Find - Scarce**
- _____ 59. M - Imp. Fashion Water Pitcher
- _____ 60. **P - N Dandelion Tankard Pitcher - Fantastic Radium Irid.**
- _____ 61. P - N Dandelion Tumblers - Choice A or B
- _____ 62. **B - N Grape and Gothic Arches 7 pc. Water Set - Outstanding Find and Beautiful**
- _____ 63. M - Rex Pitcher with 5 Tumblers - Dark and Nice
- _____ 64. **P - N Grape and Cable 7 pc. Water Set - Always In Demand**
- _____ 65. Rare PO - Dugan Vineyard Water Pitcher - Base Fracture - Still A Nice Find
- _____ 66. **Purple - Dugan Floral and Grape Water Pitcher - Radium Electric**
- _____ 67. G - N Grape and Cable Water Pitcher and 4 Tumblers
- _____ 68. **P - N Grape and Cable Water Pitcher - Multi Electric**
- _____ 69. P - N Grape and Cable Tumbler
- _____ 70. **M - Fenton Paneled Dandelion Water Pitcher - Good One**
- _____ 71. M - Fenton Lattice and Grape Tumbler
- _____ 72. **B - Lucille Tumbler - Choice A or B**
- _____ 73. P - N Poppy Tumbler
- _____ 74. **Electric B - N Peach Tumbler - Tough**
- _____ 75. P - N Acorn Burrs Tumblers - 3 x \$
- _____ 76. **G - N Grape and Cable Tumbler - Rich M. Overlay**
- _____ 77. M - Imp. Fashion Punch Bowl and Base
- _____ 78. **M - Fenton Orange Tree Flared Top Punch Bowl, Base and 10 Cups**
- _____ 79. P - N Grape & Cable Small Size Punch Bowl, Base and 6 Cups
- _____ 80. **P - Dugan Many Fruits Punch Bowl, Base, 5 Cups - Lovely Set - A Beauty - Minor Wear**
- _____ 81. M - N Grape and Cable Punch Cup
- _____ 82. **Lav. - N Grape and Cable Punch Cup**
- _____ 83. P - N Grape and Cable Punch Cup
- _____ 84. **G - N Grape and Cable Punch Cup - 2 x \$**
- _____ 85. M - Stork In Rushes Punch Cup
- _____ 86. **Hellos G - Imp. Grape Tumbler**
- _____ 87. Scarce B - Fenton Lattice and Grape Tumbler
- _____ 88. **P - N Grape and Cable Tumblers - 2 x \$**
- _____ 89. B - Enameled Cherries Tumblers - 3 x \$
- _____ 90. **M - Imp. Grape Goblet**
- _____ 91. G - N Daisy and Plume Rosebowl - Chip on Foot
- _____ 92. **P - N 10-3/4" Diamond Point Vase - Nice**
- _____ 93. G - N Fine Cup and Roses Rosebowl - Chip on Foot
- _____ 94. **Dark P - N Fine Cut and Roses Rosebowl - Minor Flakes on Feet**
- _____ 95. M - Canada Dry's Sparkling Orangeade Soda Bottle - Rare with Complete Label
- _____ 96. **BA - Australian Magpie 10", 8 Ruffle Bowl**
- _____ 97. Scarce B - N Singing Birds Mug - Above Average
- _____ 98. **Ice G - N Corn Vase w/Floral Base - Quality Piece**
- _____ 99. G - N 8-3/4" Ruffled Strawberry Bowl - BW Ext. - Blue and Green Highlights - WOW!
- _____ 100. **Pastel M - N PCE Stippled Strawberry Bowl - Outstanding - A Dandy Find**
- _____ 101. Fabulous M - N 9-3/4" Wild Strawberry Ruffled Bowl - BW Ext. - Great Again



- _____ 102. **Pumpkin M - N Ruffled 9" Three Fruits Medallion Spat. Ftd. Bowl - Dark Beauty**
- _____ 103. G - N Fruits and Flowers Stemmed Bonbon - Superior Example
- _____ 104. **M - N 6" Ruffled Wild Strawberry Berry Dishes - 5 x \$**
- _____ 105. P - N Grape and Cable Small Size Punch Base
- _____ 106. **M - N Paneled Holly Bonbon**
- _____ 107. Knockout Electric P - Imp. Grape Decanter w/Stopper - The One
- _____ 108. **Electric P - Imp. 7" Rd., Scalloped Scroll Embossed Bowl - Plain Ext.**
- _____ 109. Rare Yellow Amber - Dugan 7-1/2" Ruffled Apple Blossom Bowl
- _____ 110. **Very Rare G - Fenton 10-1/4", CRE, Square Waterlily and Cattails Bowl - Smooth Int.**
- _____ 111. Awesome Electric P - Imp. Scroll Embossed 7-1/2" Ruffled Bowl - File Ext.
- _____ 112. **G - Imp. Grape Water Carafe - Exceptionally Nice Example**
- _____ 113. P - Imp. Grape Water Carafe - Golds and Purples
- _____ 114. **P - Imp. Flute Toothpick**
- _____ 115. M - Imp. Flute Toothpick - Choice A or B
- _____ 116. **P - Imp. Pansy 8-1/2" Ruffled Bowl - Wonderful Electric Irid.**
- _____ 117. M - Imp. 7-3/4" Ruffled Scroll Embossed Bowl - File Ext.
- _____ 118. **Clambroth - Imp. Star & File Compote - 6-3/4" Opening**
- _____ 119. Lav. - Imp. Pansy Sugar Bowl - Colorful!
- _____ 120. ~~Amber - Imp. Pansy Creamer and Sugar Breakfast Set~~
- _____ 121. M - Imp. Grape 9" Ruffled Bowl - Extra Nice
- _____ 122. **M - Imp. Grape 10-1/4" Round, Flared, Collar Base Bowl**
- _____ 123. M - Imp. Frosted Block 4" Small Rosebowl - Rich Color
- _____ 124. **W - Imp. Frosted Block 89-1/4" Square Bowl - Very Hard to Find in White**
- _____ 125. Olive G - Imp. Lustre Rose Tumblers - Yellowish Tint, Neat! - 3 x \$
- _____ 126. **M - Imp. Frosted Block 9" Square Plate - Great Piece**
- _____ 127. M - Brockwitz Headdress Interior/Curved Star Ext. 10-3/4" Ruffled Bowl
- _____ 128. **M - Imp. Open Rose 9" Plate - Loaded with Color - One of the Nicest Ones Around - A Keeper**
- _____ 129. Blue Opal - N 8-3/4" Ruffled Peacocks Bowl - Not Iridized, Tip Chipped
- _____ 130. **Nutmeg Custard - N 9-3/4" Peacock at Urn ICS Bowl - Not Iridized - Very Scarce**
- _____ 131. Nutmeg Custard - N 9" Drapery Vase - Not Iridized
- _____ 132. **B - Fenton 19-3/4" Rustic Funeral Vase - 7-3/4" Opening - Pulled Point On Flame**
- _____ 133. Dark M - Imp. 12" Large Poppy Show Vase - Old and Nice - Got One? Neat
- _____ 134. **P - N 13" Thin Rib Funeral Vase - 7" Opening, 4-3/4" Base - A Dandy**
- _____ 135. G - N 11-1/4" Flute Mid-Size Funeral Vase - Alaskan Irid.
- _____ 136. **Ice B - N 10-1/2" Thin Rib Vase - Scarce Color**
- _____ 137. G - N 10-1/2" Tree Trunk Vase - Radium Pinks and Blues - Great Color
- _____ 138. **A - N 10-1/4" Fine Rib Vase**
- _____ 139. M - N 9-1/2" Diamond Point Vase - 4" Square Opening
- _____ 140. **P - N 7" Squatty Thin Rib Vase - 3-1/2", 5" Opening - Multi-Color Beauty**
- _____ 141. G - N Large Tornado Vase - Harder to Find Each Year
- _____ 142. **P - N Small Tornado Vase - Outstanding Color - Small Rim Nick - Still Quality**
- _____ 143. AO - N Flared Daisy and Drape Vase - Pastel M. Overlay - Very Pretty
- _____ 144. **M - Fenton 15-1/2" Swung Rustic Vase - CRE Top, 4-1/2" Base - Radium Beauty**
- _____ 145. Radium Electric B - Fenton 6" Squatty Butterfly and Berry Vase - CRE Top - A Super Example
- _____ 146. **Limeish G - Fenton 7" Squatty Diamond Point Column Vase - M. Interior**
- _____ 147. Imp. Iron Cross Mark 9" Vase - 5" Flared Opening, Interior Iridized, Exterior Has Most Unusual Painted Swirl/Drip Design - WOW!
- _____ 148. **M - Imp. 8" Beaded Bullseye Vase - Fabulous 6" Flared Opening**
- _____ 149. M - Dugan Mary Ann Vase - Choice A or B
- _____ 150. **M Flashed - 4-3/4" Tall Vase - Resembles Heisey Colonial Pattern - Different**
- _____ 151. Rich M - Imp. 6-1/2" Morning Glory Stick Vase
- _____ 152. **G - Cambridge 10" Inverted Feather Whimsied Bonbon (Very Rare) Thought To Be Only One Known! - Marie Chip - So What, Go For It!**
- _____ 153. G - Cambridge Inverted Feather Cracker Jar with Lid - Undervalued Item
- _____ 154. **Scarce M - Westmoreland Wild Rose Syrup Jug - Connoisseurs Piece**
- _____ 155. Honey Amber - U.S. Glass Cosmos and Cane Butter Dish with Lid - A Winner!
- _____ 156. **Honey Amber - U.S. Glass Cosmos and Cane Sugar Bowl with Lid - Great**
- _____ 157. Honey Amber - U.S. Glass Cosmos and Cane Creamer - Dandy
- _____ 158. **Ruby Flash - 1908 St. Paul Shriners Champagne Glass - Exceptional Condition**
- _____ 159. Clear - 1910 New Orleans, Alligators Shriners's Champagne Glass
- _____ 160. **Clear 1911 Rochester Painted Camel Ridge Shriners' Champagne Glass**
- _____ 161. Clear - 1909 Louisville Tobacco Leaf Shriners's Champagne Glass - Original U.S. Glass Paper Label
- _____ 162. **A - Mlbg. 7" Low ICS Millersburg Courthouse Bowl - Superb Color - 4 Small Rim Nicks - A Beauty**
- _____ 163. A - Mlbg. 10" ICS Peacock At Urn Bowl - Satin Irid.
- _____ 164. **M - Mlbg. 9" Deep, Flared Rays and Ribbons Bowl - Radium Delight**
- _____ 165. A - Mlbg. 5-1/2" Round, Flared Peacock Small Berry Bowl
- _____ 166. **P - Mlbg. 10-1/4" 6 Ruffle Peacock At Urn Bowl**

- _____ 167. A - Mlbg. Boutonniere Compact - Radium Gem
- _____ 168. **A - Mlbg. 9-1/2" Ruffled Whirling Leaves Bowl - Radium Purples - Top Notch**
- _____ 169. G - Mlbg. 10" Ruffled Holly Whirl Bowl - Radium
- _____ 170. **M - Mlbg. 10" Ruffled Rosalind Bowl - Satin**
- _____ 171. G - Mlbg. Cosmos Vt. 6" ICS Bowl - Radium Electric
- _____ 172. **M - Mlbg. 10" Ruffled Holly Whirl Bowl - Multi Color Satin Irid.**
- _____ 173. M - Mlbg. 9-3/4" Ruffled Primrose Bowl - Radium Dandy
- _____ 174. **M - Mlbg. 7-3/4" LOW, ICS Hanging Cherries Bowl (or Plate? - 1-1/2" Off Table) - Real Neat**
- _____ 175. M - Vintage 8-1/2", 3 in 1 Edge Bowl - Radium - Unknown Maker - Mlbg.?
- _____ 176. **Extremely Rare B- Mlbg. 10" Ruffled Bernheimer Bros. Many Stars Advertising Bowl - Flaw On Star In Center - Still Very Nice**
- _____ 177. A - Mlbg. Multi-Fruits and Flowers Punch Bowl Base - Got The Top?
- _____ 178. **A - Mlbg. 9-3/4" Ruffled Rays and Ribbons Bowl - Splendid Radium Irid.**
- _____ 179. M - Imp. Diamond and Sunburst 7 pc. Wine Set - Minor Damage to Stopper - Great Color
- _____ 180. **B - Fenton 10-3/4" Ball Ftd. Ruffled Stag & Holly Bowl - Tiny Rim Nick**
- _____ 181. Rare Sapphire - Fenton Orange Tree Mug - 2-1/2" Base - Great Iridescence
- _____ 181A. Elec. B - N Peacock At Fountain Tumbler - WOW!
- _____ 182. **P - N 9" Ruffled Peacocks Bowl - Rib Ext. - Great Eye Appeal and Scarce Color**
- _____ 183. W - Dugan Vintage Grape Powder Jar Base - No Lid
- _____ 184. **P - N Grape and Cable Mid-Size Punch Bowl Base - Multi Electric**
- _____ 185. M - N Peacock at Fountain Punch Bowl Base - Pinks and Yellows
- _____ 186. **Rare B - N Stippled Grape and Cable PCE Bowl - Multi Electric - Great Find**
- _____ 187. M - N 9-1/2" Rose Show Plate - Nice Pinks and Yellows - Quality
- _____ 188. **Yellow Vas. - Fenton 5-1/4", 6 Ruffle 2 Row O.E. Basket - Heat Check in Webbing**
- _____ 189. Lime Vas. - Fenton 7-1/2" Ruffled Acorn Bowl
- _____ 190. **Dark B - Fenton 7" ICS Acorn Bowl**
- _____ 191. Rich M - Fenton 7-1/2" Ruffled Acorn Bowl
- _____ 192. **M - Fenton 7-3/4" Ruffled Acorn Bowl - Lav. Opal Tips - Most Unusual**
- _____ 193. White Opal - Nautilus Creamer - Soft M. Overlay
- _____ 194. **Sapphire - Fenton 6-1/4" Blackberry Spray Vt. Square Hat - Only Two Sets Of Berries!**
- _____ 195. Pumpkin M - Fenton 8-2/4", 3 in 1 Edge Autumn Acorns Bowl
- _____ 196. **G w/Yellow Tint - Fenton 9" Ruffled Holly Bowl - Different**
- _____ 197. Pumpkin M - Fenton 8" ICS Holly Bowl
- _____ 198. **Scarce Amber - Fenton 9" Ruffled Holly Bowl - Pink and Blue Irid.**
- _____ 199. Scarce A - Fenton 9", 6 Ruffle Holly Bowl
- _____ 200. **Soft P - Fenton 9-3/4" Holly Plate - Uncommon Glass Color - Radium and Showy**
- _____ 201. Radium M - 9", 6 Ruffle Drapery Vt. (??) Bowl
- _____ 202. **M - Imp. Windmill Deep 7" Round Bowl - A Very Pretty Bowl**
- _____ 203. P - Imp. Scroll Embossed 8" Round Bowl - Plain Ext. - Nicks In Center
- _____ 204. **Radium P - Imp. Star Of David 8-1/2" Ruffled Bowl**
- _____ 205. M - Fenton 7" Round, 12 Scallop Pine Cone Bowl
- _____ 206. **Scarce Cobalt B - Fenton 9", 3 in 1 Edge Smooth Rays Bowl (Ever See One) Neat**
- _____ 207. G - Fenton 9-1/2", 6 Ruffle Coin Dot Bowl - Loads of Blues
- _____ 208. **Deep B - Fenton 7-1/2", 8 Ruffle Grape and Cable Bowl**
- _____ 209. B - Fenton Garland Rosebowl
- _____ 210. **Stunning B - Fenton 5-1/2" Ftd., Ruffled Little Fishes Berry Bowl - Very Colorful**
- _____ 211. A - Fenton Peacock Tail Tri-Corner Plate - Different Shape
- _____ 212. **B - Fenton Thistle Banana Boat - Waterlily and Cattails Ext.**
- _____ 213. Scarce A - Fenton 9", 3 in 1 Edge Peacock and Urn Bowl - Seldom Found
- _____ 214. **Great B - Fenton 9" Peacock At Urn Plate - Chip On Urn**
- _____ 215. M - Fenton Flat 7" Stippled Rays/Scale Band Plates - All Good!! - Choice: A, B, C, D, E, F
- _____ 216. **B - Fenton Miniature Blackberry Compotes - Normal Nicks On Bases - Choice: A, B, C, D**
- _____ 217. Rare B - Fenton 9-1/4" Persian Medallion Plate - Above Average - More Color Than Picture
- _____ 217A. **M - Fenton 2 Row, O.W. John Brand Furniture Adv. 2 Sides Up Basket**
- _____ 217B. B - Fenton 5-1/2", 2 Row, O.E. Ruffled Basket
- _____ 218. **Scarce B - Fenton Mikado Ruffled Compote - 1/2" Chip Top Ext. Rim**
- _____ 219. M - Fenton Round, Flared Mikado Compote - Great Shape
- _____ 220. **M - Fenton Stream Of Hearts Ruffled Compote**
- _____ 221. B - Fenton Peacock At Urn Ruffled Compote
- _____ 222. **G - Fenton 7" Ruffled Vintage Grape Compote - Not Often Seen and Pretty**
- _____ 223. B - Fenton Holly Ruffled Compote
- _____ 224. **M - Fenton Blackberry Bramble Ruffled Compote**
- _____ 225. A - Fenton Blackberry Bramble Ruffled Compote
- _____ 226. **P - Westmoreland Leaf Swirl Compote - Parfait Shape - Nice Find**
- _____ 227. P - N Rainbow Ruffled Compote - Aptly Named - Plain Ext.
- _____ 228. **Frosty W - N Hearts and Flowers Ruffled Compote**
- _____ 229. M - N Rainbow Ruffled Compote - BW Ext.
- _____ 230. **M - N Smooth Rays Ruffled Compote**
- _____ 231. Scarce G - N Grape and Cable Powder Jar w/Lid - Chips on Top and Base
- _____ 232. **G - N Grape and Cable Cologne Bottle - A Little Damage On Stopper - Lots of Color**
- _____ 233. G - N Grape and Cable Candlestick Holders - Pair
- _____ 234. **Rare G - N Grape and Cable Dresser Tray**
- _____ 235. P - N 8-Sided Bushel Basket - Minor Rim Nick
- _____ 236. **Pastel Lav. - N Round Bushel Basket - Rare**



- _____ 237. G - N Butterfly Bonbon
- _____ 238. **M - N Butterfly Bonbon**
- _____ 239. W - N 5" Peacock at Fountain Berry Dish - Marie Chip
- _____ 240. **Extremely Rare G - N Peacock At The Fountain Ftd. Fruit Bowl - Dazzling Colors!! - Old Damage To One Foot, Still A Fantastic Item**
- _____ 241. M - N 9" Ruffled Strawberry Bowl - BW Ext.
- _____ 242. **P - N 7-1/2" Wild Strawberry Handgrip Plate**
- _____ 243. P - N 9" Ruffled, Stippled Strawberry Bowl - Electric Blue Highlights
- _____ 244. **Dark P - N Poppy Ruffled Pickle Dish - Multi Electric - A Beauty**
- _____ 245. G - N 8-3/4" Rainbow Plate - No Pattern Inside or Out - Quite Rare - A Proof Plate?
- _____ 246. **Ice G - N 9" Poppy Show Plate - Lovely Silver Satin Irid. - Still Rare**
- _____ 247. P - N Rosette 9" Ruffled Ftd. Bowl - Scarcer Than You Think! - Very Pretty
- _____ 248. **P - N 6-1/4", 6 Ruffle Fruits and Flowers Bowl - Very Nice Example**
- _____ 249. Electric B - N 7-1/4" Ruffled Fruits and Flowers Bowl - BW Ext. - Hard to Come By
- _____ 250. **Very Rare B - N 9" Greek Key Plate - Multi Electric**
- _____ 251. M - N 9" Low Ruffled Three Fruits Bowl - BW Ext. - Sparkling Irid.
- _____ 252. **P - N 9" Stippled Three Fruits Plate - Rib Ext.**
- _____ 253. A - N 9" Three Fruits Plate - BW Ext. - Multi Electric
- _____ 254. **Dark A - N 9" Three fruits Plate - BW Ext. - Blues and Greens**
- _____ 255. P - N 9", 8 Ruffle, Dome Base Three Fruits Medallion Bowl - Eye Catching
- _____ 256. **G - N 9", 8 Ruffle Dome Base Three Fruits Medallion Bowl - Great Center and Scarce**
- _____ 257. G - N 8-1/2", 8 Ruffle Three Fruits Bowl - BW Ext. - Clean and Pretty
- _____ 258. **G - N PCE Three Fruits Bowl - BW Ext. - Top Notch!**
- _____ 259. P - N Fine Cut and Roses Rosebowl - Nice Feet
- _____ 260. **G - N Wild Rose Nut Bowl - 4" Tall**
- _____ 261. Dark Aqua Opal - N Beaded Cable Rosebowl - Close to Sapphire
- _____ 262. **P - N Tri-Corner 8" Leaf and Beads Candy Dish - Sunflower Interior - Stunning Electric Irid. - Rare**
- _____ 263. P - N 8-3/4" Ruffled Grape and Cable Bowl - Plain Ext.
- _____ 264. **Electric B - N Ruffled Good Luck Bowl - Rib Ext. - Point Missing - Great Color**
- _____ 265. Pastel M - N PCE Good Luck Bowl - Rib Ext.
- _____ 266. **M - N Grape and Cable Whimsey Hat from Tumbler - 7" Across! - Very Different**
- _____ 267. M - N Panelled Holly Bonbon
- _____ 268. **M - N Grape and Cable Stemmed Sherbet**
- _____ 269. P - N Grape and Cable Punch Cups - 3 x \$
- _____ 270. **M - N Lustre Flute Whimsied Punch Cup - Nifty!**
- _____ 271. A - N 9-1/2" Stippled Rays Ruffled Bowl - Plain Ext.
- _____ 272. **Dark M - N 9-1/2" Stippled Rays Ruffled Bowl - Plain Ext.**
- _____ 273. A - N 8-3/4" Stippled Rays Ruffled Bowl - Plain Ext.
- _____ 274. **M - N Wishbone Epergne - Beautiful - Rim Nick**
- _____ 275. P - N 8-1/2" Ruffled Ftd. Wishbone Bowl
- _____ 276. **G - N 8-1/2" Ruffled Ftd. Wishbone Bowl - Lovely**
- _____ 277. PO - Dugan 10 Ruffle Smooth Rays/Caroline Bowl - Lots of Opal
- _____ 278. **PO - Dugan 10-3/4", 6 Ruffle Ski Star and Compass Bowl**
- _____ 279. PO - Dugan 8-3/4", 10 Ruffle Double Stem Rose Bowl
- _____ 280. **Very Nice PO - Dugan Leaf Rays Nappy**
- _____ 281. M - Dugan Leaf Rays Nappy - Good One
- _____ 282. **M - Dugan Question Mark Stemmed Compote**
- _____ 283. P - Dugan Question Mark Stemmed Compote - Not So Easy To Find
- _____ 283A. M - Dugan Windflower Nappy - Great Example
- _____ 284. **M - Dugan Big Basketweave Basket**
- _____ 285. M - Fenton Spat Ftd., Ruffled 8" Peacock and Grape Bowl
- _____ 286. **Dark M - Fenton 8-3/4" Ruffled Peacock and Grape Collar Base Bowl**
- _____ 287. M - Fenton 8-3/4", 6 Ruffle Vintage Grape Bowl
- _____ 288. **M - Fenton 8-2/3" ICS Peacock At Urn Bowl - Irid. On Back Only - Very Different**
- _____ 289. M - Fenton 9", 3 in 1 Edge Coin Dot Bowl
- _____ 290. **M - Fenton Pond Lily Bonbon**
- _____ 291. B - Fenton Vintage Grape Bonbon
- _____ 292. **M - Imp. Grape 5-3/4" Ruffled Bowl**
- _____ 293. M - Imp. Lustre Rose 8-1/4" Ftd. Ruffled Bowl
- _____ 294. **Pastel Teal - Imp. Scroll Embossed Ruffled Compote - Glows Under Black Light**
- _____ 295. M - Imp. Grape Vt. 7-3/4" Round, Flared Bowl - Pattern Outside, Leaf in Base
- _____ 296. **B - Fenton Ruffled, CRE Scotch Thistle Compote**
- _____ 297. AO - N Beaded Cable Rosebowl - Desirable Piece
- _____ 298. **G - N Lead and Beads 8" Tri-Corner Bowl - Smooth Ray Int.**
- _____ 299. P - N 8-3/4" Ruffled Nippon Bowl - BW Ext.
- _____ 300. **Pastel Horehound - N PCE Nippon Bowl - Rib Ext. - Gorgeous Rarity - See Photos**
- _____ 301. G - N Smooth Rays Bonbon - 4 Sides Up
- _____ 302. **M - N 9", 8 Ruffle Blossoms and Palms Bowl - Plain Interior**
- _____ 303. A - N 7-1/4", 6 Ruffle Poppy Vt. Bowl - Multi-Petal Flower On Interior Center
- _____ 304. **P - N Grape and Cable Sweetmeat Bas Only**
- _____ 305. Beautiful A - N 9-1/4" Rose Show Plate - Minor Flakes On Top Of Marie
- _____ 306. **Gorgeous Ice B - N 9", 8 Ruffle Hearts and Flowers Bowl - Rib Ext. - No Upgrade Here**
- _____ 307. Ice G - N 9-3/4" ICS Peacock At Urn Master Bowl - Loads of Color - Very Nice
- _____ 308. **Dark B - N 9" Stippled Peacocks Plate - Rib Ext.**
- _____ 309. Pumpkin M - N 9" Peacocks Plate - Rib Ext.
- _____ 310. **Electric B - N PCE Peacocks Bowl - Rib Ext. - Excellent - A Keeper**
- _____ 311. Lime - Fenton 9", 3 in 1 Edge Smooth Rays Bowl - M. Overlay
- _____ 312. **G - N 5-1/2", 6 Ruffle Smooth Rays Bowl**

- _____ 313. M - Fenton 5" Round Smooth Rays Bowl
- _____ 314. **G - Fenton 6-3/4" Low Ruffled Stippled Rays Compote - Great Colors**
- _____ 315. A - N 7-1/2" Ruffled Poppy Vt. Bowl
- _____ 316. **A - Fenton 8" Tight CRE Vintage Grape Bowl - Sharp Point**
- _____ 317. B - Fenton Pond Lily Bonbon - Rim Chip
- _____ 318. **M - Fenton 5" Round Stippled Rays Bowl**
- _____ 319. M - Fenton 5" Round Smooth Rays Bowl
- _____ 320. **Lime Vas. - Fenton Honeycomb and Clover Bonbon - Radium M. Overlay**
- _____ 321. M - 8-1/4" Ftd. Thistle and Thorn Ruffled Bowl
- _____ 322. **M - Fenton 6", 6 Ruffle Sailboats Bowl**
- _____ 323. P - Westmoreland Scales 5" Round Bowl
- _____ 324. **P - Westmoreland Scales 5" Round Bowl with Underplate**
- _____ 325. M - N 6-1/4" Ruffled Fruits and Flowers Bowl
- _____ 326. **G - N 9" Ruffled Bullseye and Leaves Bowl**
- _____ 327. M - Thorn and Thistle Creamer
- _____ 328. **M - Split Diamonds Creamer**
- _____ 329. M - Fenton Sailboats Wine Glass
- _____ 330. **Ice B - N Grape Arbor Tumbler - Base Chip**
- _____ 331. P - N 8" Ruffled, Ftd. Raspberry Bowl - Chip On Foot
- _____ 332. **A - Fishscale and Beads 7" Bowl - Rim Chip**
- _____ 333. M - Imp. Lustre Rose Creamer - Rim Chip
- _____ 334. **Clambroth - Imp. Lustre Rose 8" Round Bowl**
- _____ 335. G - Fenton (?) Stemmed 5-3/4" Salver Type Compote
- _____ 336. **A - Smooth Rays 8", 6 Ruffle Bowl**
- _____ 337. M - Imp. Ranger 8-1/2" Round, Flared Bowl - Iron Cross Mark - Very Scarce
- _____ 338. **M - Interior Flute 7-1/2" Rosebowl**

CONTEMPORARY ITEMS

- _____ 339. Red Amberina - ACGA 1994 Inverted Strawberry Salt & Pepper
- _____ 340. **Vas. Opal - ICGA 1983 Frolicking Bears Cuspidor - M. Overlay**
- _____ 341. Sea Mist G - ACGA 1998 Seacoast Cuspidor
- _____ 342. **Cobalt B - ACGA 1975 Carillon Bell Tower Bell**
- _____ 343. Ice G Vas. - 8" Ruffled Scroll Embossed Bowl - Marked LIG
- _____ 344. **B - Holly Band Toothpick Holder**
- _____ 345. B - Argonaut Toothpick Holder
- _____ 346. **M - 474 Tumbler - Mkd. IG**
- _____ 347. G - Imp. Grape Milk Pitcher - Mkd. IG
- _____ 348. **W - Imp. Octagon 6-1/2" Vase - Mkd. IG**
- _____ 349. Red - Imp. 6-3/4", 474 Vase - Mkd. IG - Scarce
- _____ 350. **B - St. Clair Hobstar Wines - 4 x \$**
- _____ 351. B - Imp. Nursery Rhyme Elephant Handle Mug - Mkd. IG - Electric
- _____ 352. **M - Imp. Scroll and Flower Panel 10" Vase - Mkd. IG**
- _____ 353. Smoke - Imp. Scroll and Flower Panel 10" Vase - Mkd. IG
- _____ 354. **Smoke - Imp. Grape Water Pitcher - Mkd. IG**
- _____ 355. Smoke - Imp. 474 Water Pitcher - Mkd. IG
- _____ 356. **Rare Red Amberina - Imp. Fieldflower Water Pitcher - Mkd. IG**
- _____ 357. Ice B - Imp. 13-3/4" Morning Glory Vase - Mkd. IG
- _____ 358. **W - Imp. 9", 3 in 1 Edge Lustre Rose Bowl - Mkd. IG - A Beauty**
- _____ 359. Ruby Red - Imp. Grape Decanter & Stopper - mkd. IG - Not Iridized - Very Scarce

— Plus Another Dozen Contemporary Pieces Not Catalogued AND Twenty or so Vintage Carnival Glass Pieces – All with Some Damage, But Some Good Pieces Nonetheless.

SPECIAL NOTE:

NO SUNDAY CALLS, PLEASE!

Winning Absentee Bidders will be contacted Monday through Wednesday of the week following the Auction!

Thank You!


NOTE: NEW ADDRESS

For Free Color Catalogs & Information Write:
Mickey Reichel

18350 Hunters Ridge Ct., Boonville, MO 65233-2971

or Call: 660-882-5292 days or

660-882-5283 evenings

 E-mail: mreichel@undata.com

NEED QUALITY CARNIVAL GLASS & ANTIQUES

*"We don't want all the Business,
Just Yours."*

WE DO AUCTIONS RIGHT!!



2004 CALENDAR

September 18, 2004

**IMPORTANT EASTERN OHIO COLLECTION OF
HIGH QUALITY CARNIVAL GLASS
Held in St. Louis, MO, at Wentzville,
A Suburb West of St. Louis**

Special Room Rate Cut-Off 8-17-04 (636) 327-7001

October 15 & 16, 2004

**AIR CAPITAL CARNIVAL GLASS CONVENTION
at Wichita Kansas**

November 13, 2004

**CARNIVAL GLASS AUCTION
at Boonville**

Oklahoma Collection

January 8, 2005

14TH ANNUAL NEW YEAR'S EXTRAVAGANZA

www.AWK-SHN.com
MICKEY REICHEL
ANTIQUÉ & AUCTION, L.C.
18350 HUNTERS RIDGE CT.
BOONVILLE, MO 65233

PRESORTED
FIRST CLASS MAIL
US POSTAGE PAID
SEDALIA, MO
PERMIT 217

FIRST CLASS MAIL
SPECIAL INVITATION TO:

RETURN SERVICE REQUESTED



8*41*****MIXED AADC 650
LEE MARKLEY
PO BOX 306
MENTONE, IN 46539-0306
|||||

