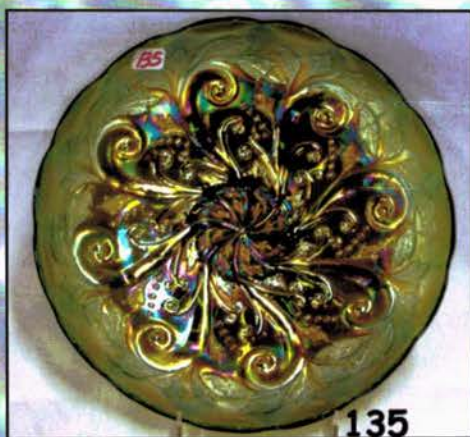


Jim Wroda Auction Services
 C/O Midwest Auctioneers & Realty, Inc.
 5239 St. Rt. 49 South
 Greenville, Ohio 45331
 www.jimwrodaucauction.com

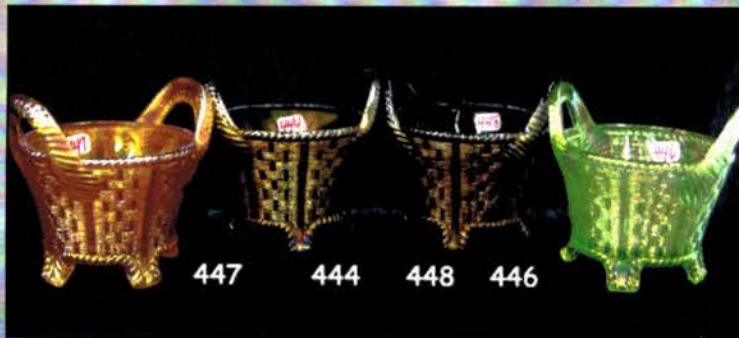
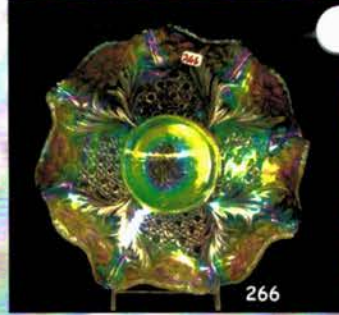
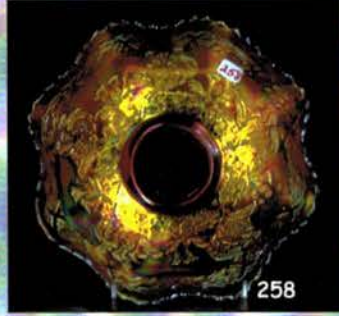
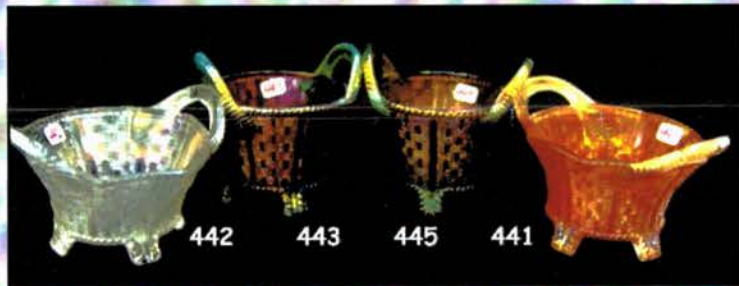
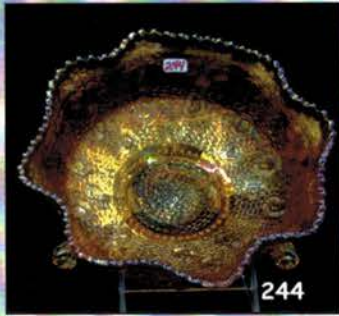
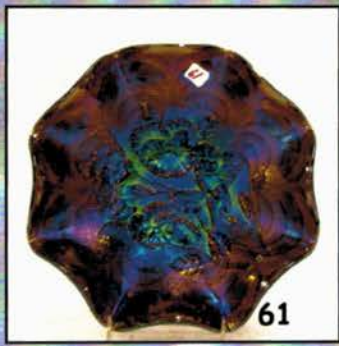
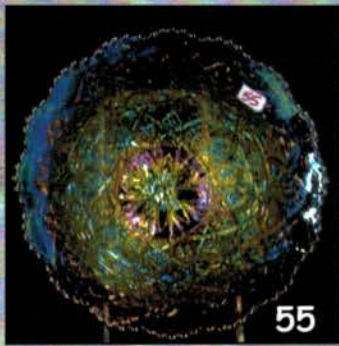
Presorted
 First Class Mail
 U.S. Postage Paid
 Celina, OH
 Permit No. 99



First Class

005*001*****MIXED AADC 458
 Lee Markley
 502 N Broadway
 PO Box 306
 Mentone IN 46539-0306

Carnival Glass Collection
 Alma Ricketts, Marble Hill MO.
 Friday July 23rd and Saturday July 24th, 2004
 Midwest Auction Facility- Greenville, Ohio



Carnival Glass Auction

Friday July 23rd, 2004 at 3:00 PM

Friday night July 23rd at 6:30 PM to 8:30PM Hog Roast Picnic

Saturday July 24th, 2004 9:30 AM

Preview Thursday from 10-5PM and Friday from 10 to 3PM with auction starting at 3:00PM Friday

Midwest Auction Facility

5239 St. Rt. 49 South, Greenville, OH 45331

937-548-2640 email: jwrodamidwest@earthlink.net

Directions: From I-70 westbound take the Rt. 49 N exit (24). Go approx. 25 miles North to Greenville, the Auction facility will be on your right at the intersection of Rt. 49 and Rt. 127. From I-70 eastbound take the Rt. 127 North exit. Go approx. 20 miles to Rt. 49 exit. Turn left and the auction facility will be on your right. We are approx. 30 minutes from the Dayton International Airport

Well this chance hasn't happened for awhile... A chance to see and bid on 800 quality lot's, consisting of over 1100 pieces in one auction! Well... on Friday and Saturday, July 23rd & 24th we will be auctioning off the fine collection of Alma Ricketts from Marble Hill, MO. Alma has collected for more than 30 years and has some very nice glass to offer. Alma also wants to host a hog roast picnic dinner on Friday night for everyone so... at 6:30 pm on Friday night we will be serving a dinner to all auction attendee's for Friday and Saturday so plan on coming over early!! All will take place in our air-conditioned auction facility. You won't want to miss this great opportunity to buy from this size of collection!!! It doesn't happen very often! As always everything sells to the highest bidder. No reserves- minimums or hidden bids. Everything goes to a new home!!

IMPORTANT

*****Mail, E-mail, Phone, and Absentee Bids Policy:*****

1. Phone inquiries on items of interest are welcome! 937-548-2640 or 937-447-8909 evening.
2. Bidders take full responsibility to honor any and all bids that are executed in your behalf.
3. All items to be paid for within 7 days of notification unless other arrangements are made prior to auction. Successful absentee bidders must also pay *estimated* shipping costs.
4. All items bid competitively against the audience. **We do not start with your bid.**
5. Items will be bid on in **perfect condition** with average to above average iridescence unless otherwise stated or noted on your order of sale list or absentee bid sheet. **We will describe each item as accurately as possible!! (see listing) Bids will not be carried out if a damage is found during auction.** If manufacture problems bother you such as air bubbles, pulled points, soda ash, tool marks, or any other manufacturing flaw, please be specific in your mail bids or email bids. **If there is a manufacture flaw on an item that we feel is truly distracting, we have noted that in the listing already. Auction Company has the right NOT to execute an absentee bid for any reason.**
6. All bids can be called in to: (937) 548-2640, faxed to 937-548-3492 or sent to 5239 St. Rt. 49 South, Greenville, OH 45331. You can also e-mail bids and ask questions directly from our website (Please Ask!)
7. **All mail, faxed, write-in, phone in, and email bids due by Thursday July 22nd 2004 - 5:00pm.**
8. **Anyone wanting to live phone bid day of auction should call us by Weds. July 21st 5:00pm.**
9. If someone in the audience is bidding for you they must pay for the item(s) before leaving.

******To view over 150 pictures go to: www.jimwrodauction.com******

Terms and Conditions of Auction: Cash, Travelers checks, business or personal checks with proper I.D.

We now have Visa ,MC and Discover with a 3% clerk fee. Ohio State Sales tax collected

All items being sold AS IS WHERE IS with NO MINIMUM and NO RESERVE! Everything sells to highest bidder.

******Please use the preview times to look over your items of interest.******

Hosting Hotel: Holiday Inn-Greenville 937-548-1328 (special rate if you mention "Midwest Auctioneers")

Other hotels: Comfort Inn - 937-316-5252 and Greenville Inn: 937-548-3613

We have a map available at the auction facility, with all restaurants and local areas of interest listed.

Jim Wroda Auction Services

Jim Wroda and Mike Baker - Auctioneers

Chuck Litteral - Apprentice Auctioneer

5239 St. Rt. 49 South, Greenville, Ohio 45331 Phone: (937)548-2640

E-mail: jwrodamidwest@earthlink.net or lwrodamidwest@earthlink.net



1. N mari Graceful vase.
2. N mari Feathers 10" vase
3. F 10 ¼" Knotted Beads vase w/CRE top
4. **Stretch 8 ½" celeste blue Florentine candlesticks console set with black glass stand.**
5. **Stretch 8 ½" celeste blue Florentine candlesticks console set with black glass stand.**
6. **Stretch 6 ¾" celeste blue candlesticks console set.**
7. F 5 ½" green Coin Dot rosebowl
8. F 6" mari. Two Flowers spatula footed rosebowl
9. **Stretch 8 ½" russet green candlesticks. Rare color!**
10. **Stretch 6" celeste blue Concave Diamond vase. Scarce!**
11. **F 15 ¾" amy. Rustic variant mid-size vase. 4 1/8" base**
12. **Imp. 16 1/8" helios green Ripple mid-size vase. 4" base**
13. Jenkins 10 1/8" mari. Cut Flowers cylinder vase. Nice color!
14. **Imp. 11 ½" lavender Freefold vase. Scarce & Nice!**
15. **Imp. 11 ½" smoke Freefold vase. Nice!**
16. Imp. 12" mari. Flute vase. Good color!
17. European?? 10 ½" mari. Painted Block Rings candlesticks.
18. F amber Small Rib spittoon whimsy. Rare color!
19. Jeanette 7" dark mari. hex. Candlesticks.
20. F 10" cobalt Butterfly & Berry vase. Great color!
21. D 7 ¾" elec. purple Lattice & Points mini. Vase. Pinhead
22. D 9 ¾" white Lattice & Points vase. Good color!
23. **Imp. Stretch white Plain Jane basket**
24. **Imp. Stretch smoke Plain Jane basket**
25. Imp. Stretch mari. Plain Jane basket
26. Imp. 4 ½" elect. Purple Smooth Panel vase
27. Imp. 4 ½" MMG Smooth Panel vase – Iron Cross
28. Westmoreland amy. Footed shell bowl whimsy.
29. N 7" Jade Blue candlesticks w/gold gilding.
30. (2) Diamond Harding 9 ¾" blue ribbed vase.
31. U.S. Glass mari. water pitcher. Nice!
32. Imp. green/vaseline Soda Gold spittoon (not iridized)
33. D white Round Up low bowl/plate. Nice & Frosty!
34. **N IB Daisy & Plum flared compote/candy dish w/Raspberry interior. Tiny flake on legs. Super color!**
35. F 16 ¾" blue Rustic mid-size vase. Flake on one point.
36. Libby 6 ½" light mari. Maize vase (also called celery vase)
37. F 16 ¾" Vaseline Chrysanthemum footed center piece bowl. Flake off of one point.
38. (2) F mari. Orange Tree shaving mugs
39. Heisey light mari. Puriton compote. Rare
40. N amy. Fine Cut & Roses rosebowl. Nice!
41. Imp. Teal Smooth Panels rosebowl. Lightly iridized.
42. Imp. Smoke Smooth Panels rosebowl. Rare shape.
43. Imp. clambroth Omera rosebowl. Nice color! Odd item
44. Small miniature marigold rosebowl. Maker ???
45. **English Sowerby dark mari. Jacobs Ladder rosebowl**
46. **Imp. dark mari. Oval & Round rosebowl. Tough find!**
47. Westmoreland radium mari. Concave Fluet rosebowl.
48. Imp. dark. Mari. Optic & Button rosebowl. Pretty!
49. N elec. purple Bushel Basket. Flake off of edge.
50. Dugan Diamond IG console set w/9" candlesticks.
51. **Westmoreland 10" team Corinth JIP vase**
52. **Westmoreland 10" purple Corinth JIP vase**
53. Imp. 11 ¼" mari. Beaded Bulls Eye vase.
54. Westmoreland 8 1/2" amber Corinth vase
55. **Imp 8 ½" smoke Hattie bowl. Nice Color!!!**
56. M-burg 8 ½" green Blackberry Wreath 3/1 edge bowl.
57. Imp. 9" teal Heavy Grape master berry bowl.
58. **Imp. 9" smoke Floral & Optic centerpiece bowl. Rare color!**
59. D 8 ¾" mari. Four Flowers bowl w/BW ext. Nice!
60. **F 10 ½" green/Vaseline Stag & Holly centerpiece bowl. Not iridized. Glows under light.**
61. Imp. 9" elec. Purple Pansy bowl.
62. D 8" mari. Lattice & Points vase-nick on base & Imp. 10" amber Ripple vase. Has nick on ripple. Sold as one lot.
63. Westmoreland amber small compote.
64. **Dugan purple Flowers & Frames bowl.**
65. **N 9" purple Strawberry plate w/BW back.**
66. N 9" Marigold Strawberry plate w/BW back
67. **N 9" elec blue Strawberry Stippled PCE bowl. WOW!**
68. **N 9" purple Strawberry PCE bowl w/BW back**
69. **N 9" green strawberry ruffled bowl w/bw back**
70. N 8 ½" mari Strawberry ruffled bowl w/BW back
71. N 8 ½" purple Strawberry ruffled bowl w/BW back
72. **N 9 ½" Green Wild Strawberry ruffled bowl. NICE!**
73. **N 9 ½" elec purple Wild Strawberry ruffled bowl.**
74. **N 9" Lt. IB Nippon PCE bowl. Nice pastel!**
75. **N 8 ½" Lt. IB Hearts & Flowers ruffled bowl.**
76. **N 8 ½" white Hearts & Flowers Ruffled bowl**
77. **N 8 ½" IB Hearts & Flowers Ruffled bowl. WOW!**
78. **N 8 ½" elec. purple Hearts & Flowers Ruffled bowl. Very nice bowl!**
79. N 9" purple G & C plate.
80. N 9" elec purple G & C plate.
81. N 9" elec purple G & C plate.
82. **N 10" elec blue G & C ruffled bowl. Scarce**
83. **N 9" Mari. Good Luck plate.**
84. **N 9" purple Good Luck plate.**
85. **N 9" mari Good Luck PCE bowl. Nice color**
86. **N 9" Green Good Luck PCE bowl. Scarce**
87. N 9" mari. G & C PCE bowl.
88. N 8 ½" green G&C ruffled bowl.
89. N 9" mari. G & C PCE bowl. Plain back
90. **F 9" mari. Peacock & Grape Ft'd plate. Nice color & detail on a scarce plate**
91. F 8" mari. Peacock & Grape ft'd ICS bowl.
92. F 8" elec blue Peacock & Grape ICS bowl. Nice!
93. F 8" blue Peacock & Grape ICS bowl.
94. F 8 ½" blue Peacock & Grape 8 ruffled bowl.
95. **F 8 ½" VASELINE Peacock & Grape 8 ruffled bowl.**
96. 8 ½" pastel mari Peacock & Grape 8 ruffled bowl.
97. N Wide Panel Epergne. Has a green base w/green center lily and 3 mari side lilies. Flaking by inserts.
98. F 9" blue Holly 3-1 edge bowl.
99. F 9" mari Holly 3-1 edge bowl.
100. F 9" purple Holly 3-1 edge bowl.
101. F 9" mari Holly 3-1 edge bowl.
102. F 9" white Holly 3-1 edge bowl.
103. F 8 ½" mari Holly 8 ruffled bowl.
104. F 8 ½" mari Holly 8 ruffled bowl.
105. **F 8 ½" amy Holly 8 ruffled bowl.**
106. **F 8 ½" purple Holly 8 ruffled bowl**
107. **F 8 ½" amber Holly 8 ruffled bowl. Scarce color**
108. **F 8 ½" purple Holly ruffled bowl**
109. F 8" mari Holly deep round bowl.
110. **F 8 ½" Holly Elec. blue ICS bowl. Nice**
111. **F 8 ½" Holly Teal Green ICS bowl.**
112. F 9" blue Holly 8 ruffled bowl.
113. **F 9" green Holly 8 ruffled bowl**
114. F 9" white Holly plate
115. **F 9" blue Holly plate. Scarce**
116. **F 7" White Coin Spot ICS bowl. Very RARE bowl!**
117. **F 9" White Peacock @ Urn plate. Nice**
118. F 8 ½" white Peacock @ Urn 6 ruffled bowl.
119. F 7" mari Lions ICS bowl. Scarce
120. F 6" Blue Illusion 2 handle square bon bon. Nice detail!
121. F 7" mari. Water lily 2 handle bon bon
122. F 7" blue Water lily square 2 handle bon bon
123. F 7" purple Butterfly square 2 handle bon bon
124. F 7" mari Butterfly square 2 handle bon bon
125. F 7" purple Butterfly 2 handle bon bon
126. F 7" green Butterfly square 2 handle bon bon
127. **F 6" Aqua Peacock & Dahlia ICS bowl. Scarce**
128. F 5" mari Peacock & Dahlia round bowl
129. F Green Wreath of Roses 2 handle bonbon
130. F purple Wreath of Roses 2 handle bonbon
131. F blue Persian Medallion 2 handle bonbon

132. F mari Persian Medallion 2 handle bonbon
133. F mari Two Fruits 2 handle bonbon
134. F blue Two Fruits 2 handle bonbon
135. **M 9" green Seaweed plate. Super color on a very rare plate! Radium! Not many chances to own this plate!**
136. **M 10" purple Seaweed 3-1 edge bowl. Radium**
137. **M 10" purple Rosalind ICS bowl. Scarce. Radium**
138. **M 8" mari Peacock @ Urn 3-1 edge bowl. Bee w/ bead**
139. M 10" purple Blackberry Wreath ruffled bowl. Radium
140. M 9 1/2" purple Primrose bowl.
141. **M 10" Green Peacock ruffled bowl. Radium**
142. M 9 1/2" Purple Holly Whirl ruffled bowl.
143. **M 9 1/2" purple 5 pt. Many Stars ICS bowl. Very scarce**
144. **M 5" purple Peacock berry bowl. Radium**
145. M 7" green Mayan ICS bowl. Radium
146. M 9" green Blackberry Wreath 3-1 edge bowl
147. M 7" mari. Hanging Cherries ICS bowl.
148. **M 5 piece GREEN Blackberry wreath berry set w/ CRE edge. ALL pieces have SUPER Radium blue irid! This is a TOP shelf berry set in anyone's book!**
149. M 5" Blackberry Wreath CRE sauce dish.
150. M mari Holly Sprig 2 handle bonbon
151. M purple Holly Sprig 2 handle card tay
152. **M 9" purple Peacock master berry bowl Super radium irid.! NICE!**
153. **M purple boutonniere compote. Radium**
154. M mari. Multi Fruits punch base
155. **M Green Hanging Cherries Water pitcher. Radium! Has a small bruise in the base.**
156. **M Green Diamonds water pitcher. NICE!**
157. M mari multi Fruits punch base
158. 2 Millersburg green Diamonds tumblers. 2x money
159. **Imp. mari. 474 8pc punch set. Scarce**
160. Imp. Grape green punch bowl & base.
161. Imp. Grape Mari. 7pc. Punch set.
162. N 9" purple 3 Fruits plate w/BW back
163. N 9" green 3 Fruits plate w/BW back
164. **N 9" elec. purple stippled 3 Fruits plate w/rib back. SUPER!**
165. **N 9" mari stippled 3 Fruits plate w/rib back. Nice**
166. **N 9" Killer radium elec blue stippled 3 Fruits plate w/rib back. WOW!**
167. **N 9" purple stippled 3 fruits plate w/rib back. Has nice elec highlights!**
168. F 9" purple 3 Fruits plate. Nice
169. F 9" mari 3 Fruits plate.
170. N 9" green G&C PCE bowl w/BW back
171. N 9" green 3 Fruits PCE bowl w/ BWback.
172. **F 9" blue Persian Medallion plate. Scarce**
173. **F 9" mari Orange Tree plate w/TT center.**
174. **F 9" mari Ribbon Tie 3-1 edge plate. FLAT!**
175. **F 9" blue Ribbon tie 3-1 edge plate. Also flat!**
176. F 8" blue Captive Rose 3-1 edge bowl.
177. F 8" purple Captive Rose 3-1 edge bowl. Scarce
178. **N 9" purple Strawberry plate w/ BW back**
179. **N 9" mari Strawberry plate w/BW back. NICE!**
180. **Imp. 7pc elec purple Diamond Lace water set. NICE!**
181. D 7pc mari. Vineyard water set. Dark color
182. **N 7pc purple Acorn Burrs water set. Scarce**
183. **N 7 pc. Purple G&C water set. Scarce**
184. F 7pc. Mari Floral & Grape water set.
185. Imp. mari Crab Claw punch bowl & base
186. Imp. Mari Fashion punch set.
187. Imp. IG mark elec. purple Hobstar 8pc. Punch set. Nice
188. **N 8 1/2" AO Stippled 3 Fruits ruffled bowl . Scarce!**
189. **N 8 1/2" AO Stippled 3 Fruits Ft'd ruffled bowl. Scarce**
190. **N 8 1/2" elec purple Stippled 3 Fruits ft'd ruffled bowl. NICE!**
191. **N elec purple 3 Fruits ft'd ruffled bowl. Super**
192. N purple 3 Fruits Ft'd ruffled bowl.
193. N green Butterfly 2 handled square bonbon. Scarce color.
194. **N Elec Blue Fruits & Flowers Bonbon. Beautiful!**
195. N mari Fruits & Flowers Bonbon.
196. N purple Fruits & Flowers bonbon.
197. N elec purple Butterfly 2 Handle square bonbon. Nice!
198. **F blue 6" Blackberry OE basket flared straight out. NICE!**
199. F 6" purple blackberry OE ruffled hat
200. **F 5" green blackberry OE ruffled hat. Scarce color**
201. F 5" Mari blackberry OE 2 sides up hat
202. F 5" blue JIP OE hat
203. F 5" blue OE 2 sides up hat
204. F 6" mari. OE 2 sides up hat
205. F 5" mari OE square hat.
206. **F 5" Vaseline OE ruffled hat.**
207. **F 5" Powder blue Blackberry spray square hat**
208. **F 5" Aqua Holly square hat**
209. F 5" blue Holly square hat
210. F purple Blackberry spray square hat
211. F 5" blue French Knots square hat
212. F 5" blue Blackberry Banded Square hat
213. F 5" purple Flowering Dill CRE hat
214. F 5" dark mari Blackberry spray JIP hat w/CRE
215. F 5" blue Pepper Plant ruffled hat
216. **F 5" green Pepper plant ruffled hat**
217. F 5" blue Holly ruffled hat
218. F 5" mari Flowering dill ruffled hat
219. **F 6" Vaseline Holly low ruffled hat**
220. **F 5" Vaseline holly ruffled hat**
221. **F mari Kittens cup & saucer**
222. **F mari Kittens 2 side up plate**
223. **F mari Kittens 4 side up plate**
224. **F mari Kittens cereal bowl**
225. **D 10" PO Ski Star ruffled bowl. Super color!**
226. 3 Dugan 5"PO Four flowers ruffled sauces. 3xmoney
227. **D 10" Purple Victorian ruffled bowl. Scarce!**
228. **2 Dugan 6" Vaseline Stippled Estate vases. Very hard to find. Selling choice**
229. D 9" PO Dogwood Sprays tricornered dome ft'd bowl.
230. D 9" blue Maple Leaf stemmed master berry bowl.
231. **D 9" PO Four Flowers Ruffled bowl. Nice**
232. **D 7" Elec. Purple Flowers & Frames deep 10 ruffled bowl. Scarce shape on a good lookin' bowl!**
233. **D 10" white Persian Gardens deep round bowl. Nice irid.**
234. D purple & mari Grape delight nut bowls. Selling pair.
235. D white Grape Delight rosebowl
236. D blue Grape Delight rosebowl
237. **D elec purple Grape Delight rosebowl w/smooth top.**
238. **F mari Mikado flared compote. Nice!**
239. D white Puzzle 2 handle round bonbon. Super color!
240. **D Elec purple Puzzle 2 handle round bonbon. Super**
241. D PO Puzzle 2 handle round bonbon. Very Nice!
242. Fenton Presnik G&C Humidor. Purple
243. F 9" mari Waterlily ICS ft'd bowl. Nice color
244. **F 9" mari. Hearts & Trees ft'd bowl. Very rare but does have a 2" crack from base.**
245. **F 9" mari. Panther ft'd bowl. Scarce**
246. 2 Fenton 5" mari Panther berry bowls. 2X money
247. F 10" Blue Orange tree ft'd fruit bowl.
248. F 10" Blue Orange tree ft'd fruit bowl.
249. **F 9" mari. Fantail ft'd ICS bowl. Scarce.**
250. **F mari Thistle ft'd Banana bowl. Nice**
251. F 10" mari G & C ft'd fruit bowl w/PM int.
252. N 8 1/2" purple Wishbone ft'd bowl. Scarce
253. N 9" purple Wishbone ruffled bowl. Scarce
254. N 8 1/2" purple 3 Fruits ft'd ruffled bowl.
255. **N IB Acorn Burrs punch bowl & base. Super pastel irid. Does have I missing flute. RARE!**
256. **N Green midsize G&C punch bowl and base. Very hard to find! Bowl is outstanding, base is OK.**
257. F 8 1/2" mari Plaid ruffled bowl.
258. **F 8 1/2" dark mari. Coral ruffled bowl. Super color!**

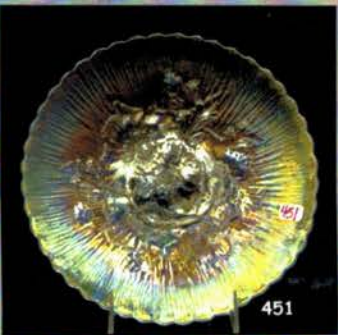
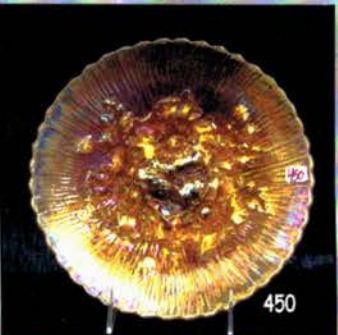
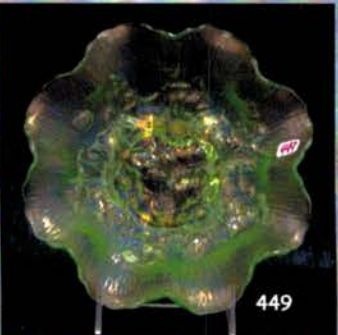
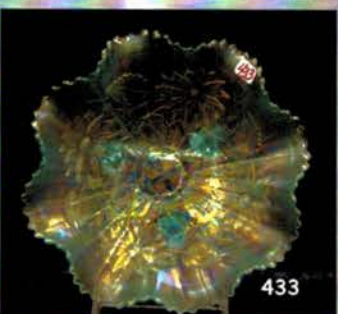
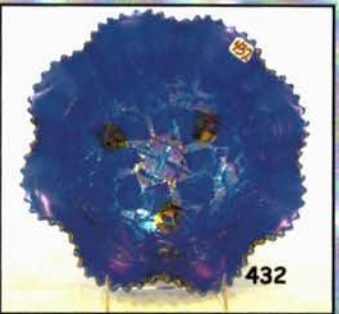
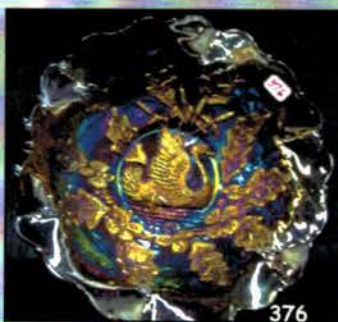
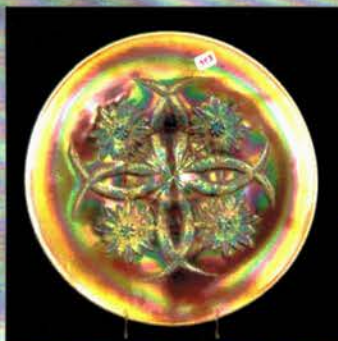
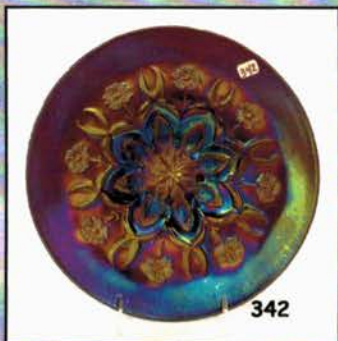
259. F 8" Elec. Green Dragon & Strawberry round bowl. Absolutely beautiful! Killer irid!
260. F 8 1/2" mari Ribbon Tie 3-1 edge bowl.
261. F 8 1/2" blue Holly 8 ruffled bowl. Nice
262. F mari 5pc. Fentonia berry set. Very hard to find! Nice
263. N 8 1/2" BO Rose Show bowl. Not carnival. Scarce
264. N 8 1/2" AO Rose Show bowl. Butterscotch irid.. Opal on edge. Nice
265. N 8 1/2" White Rose Show bowl. Nice frosty irid.
266. US Glass 10" White Cosmos & Cane ruffled bowl Scarce.
267. US Glass 6" Honey Amber Cosmos & Cane round bowl w/headress int. Super frosty color!
268. US Glass 5" Honey Amber Cosmos & Cane square bowl w/Headress int. RARE!
269. US Glass 8" Honey Amber Cosmos & Cane round bowl. Another super item!
270. Imp. 5" Elec. Purple Grape plate. Super
271. Imp. Grape elec purple 8 1/2" Ruffled bowl
272. Imp. Grape elec. purple 8" round bowl. NICE!
273. Imp. Grape elec purple 10"ruffled bowl.
274. F blue 7 pc. Orange Tree Orchard water set. Nice color on a scarce set.
275. Cam. Mari inverted Strawberry spittoon. Scarce!
276. N 8 1/2" green Stippled Strawberry PCE bowl. Very scarce!
277. US Glass 6" mari Palm Beach square bowl.
278. N 8 1/2" mari. Peacocks PCE bowl. Nice
279. F 7 pc blue Butterfly & Fern water set. Very scarce
280. Dugan mari Amaryllis tricornor compote. Great color!
281. N Lime Green G&C creamer. Very scarce.
282. N 8 1/2" dark mari Nippon ruffled bowl. Super color!
283. Dugan 5 pc. Blue Floral & Grape water set.
284. N 8 1/2" mari Embroidered Mums ruffled bowl.
285. N 8 1/2" white Hearts & Flowers ruffled bowl. Nice frosty irid.
286. N 8 1/2" dark mari Hearts & Flowers ruffled bowl.
287. N mari Hearts & Flowers compote.
288. N mari Daisy & Plume Rosebowl w/rasp int. Dark irid.
289. Imp. mari Windmill milk pitcher. Killer irid!
290. M-burg 8" mari Blackberry Wreath ICS bowl.
291. M-burg 10" mari Peacock's ruffled bowl.
292. N lime green G&C punch cup. Scarce
293. M-burg mari blackberry wreath 3-1 edge bowl w/star int.
294. N 8 1/2" mari Peacocks ruffled bowl w/BW back.
295. N 8 1/2" mari. Wishbone ft'd bowl.
296. N 9 1/2" mari Wishbone PCE bowl w/BW back.
297. Dugan 9" pastel mari 4 flowers variant plate. Nice!
298. N 8 1/2" mari Good Luck PCE bowl. Nice color.
299. Dugan mari Quill water pitcher. Very Scarce.
300. Assortment of 35 different vases!!!! Selling choice of the bunch. Patterns include Diamond rib-Tree trunk- Ripple-Diamond Point- Smooth Panels- Long thumbprint- Thin Rib- Morning Glory- Beaded Knots and others.

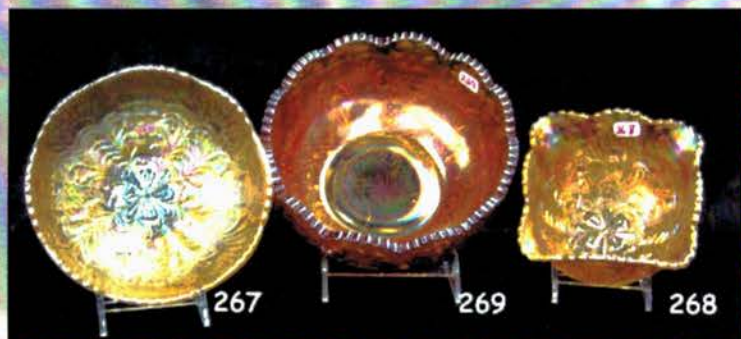
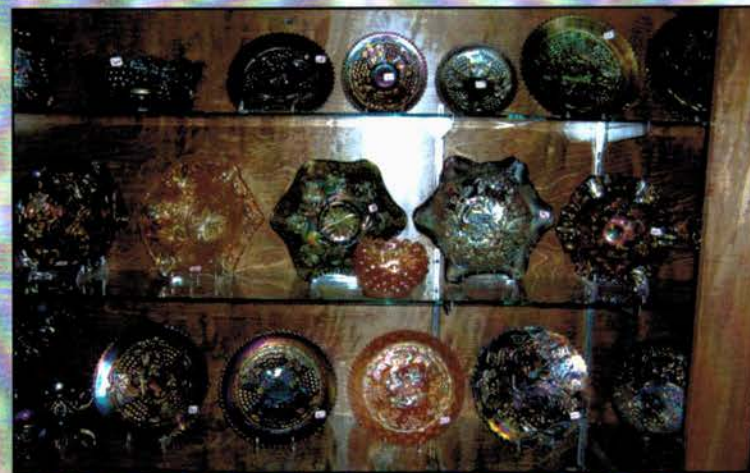
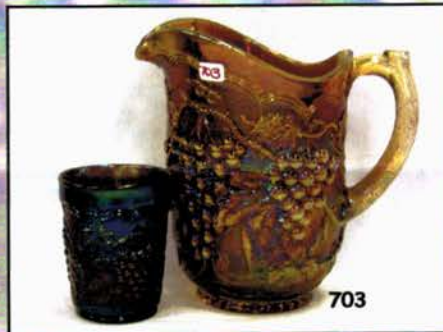
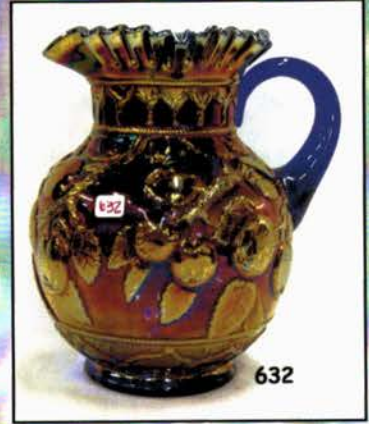
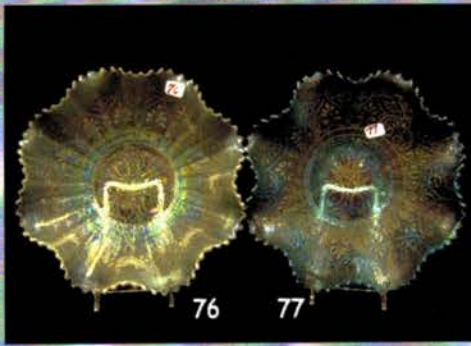
END OF FRIDAYS SESSION.

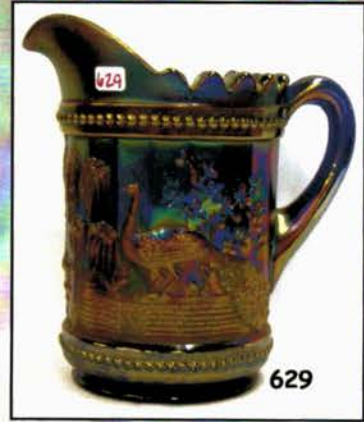
HOG ROAST AND FRIDAY NIGHT'S PREVIEW
FOR SATURDAY FROM 6:30 TO 8:30.
DOORS OPEN AT 8:00AM SATURDAY MORNING.

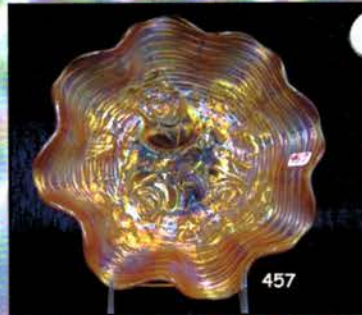
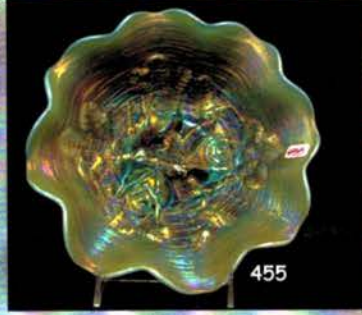
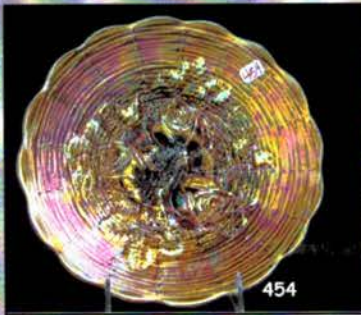
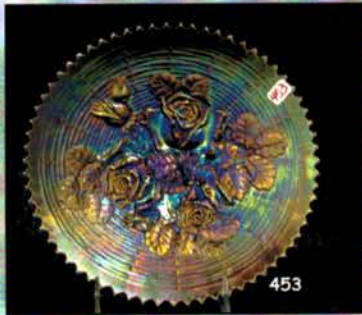
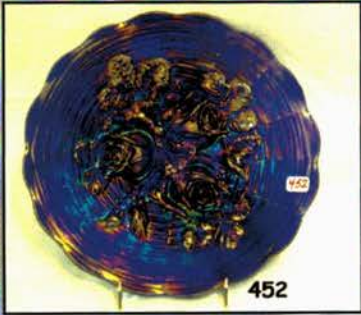
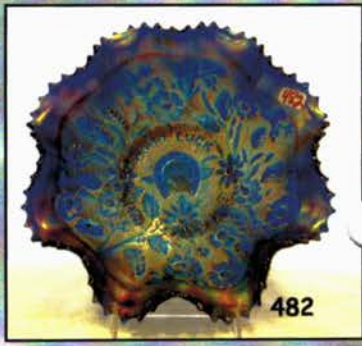
301. N purple G&C 4 pc table set. Selling as set. Nice irid
302. N purple G&C covered lg. compote. Great color!
303. N mari. G&C powder jar. Small roughness on lid
304. N elec. purple G&C powder jar. NICE
305. F 6"blue G&C round bowl
306. N blue G&C large fruit bowl. Very scarce! Nice
307. N elec blue G&C low fruit bowl. Super elec irid!
RARE
308. N 6" purple G&C 2 sides up plate
309. N purple G&C sweetmeat. Nice color!
- 309A N purple G&C banana boat. Scarce
310. N KILLER elec purple G&C ruffled compote. WOW!!
311. N 9" green stippled G&C Old Rose Dis. Plate. Scarce

312. N 10" white G&C ruffled bowl. Scarce color.
313. N 10" elec. blue G&C ruffled bowl. SUPER!.
314. N 10" green G&C ruffled bowl. Scarce color. Scarce
315. N 10" mari G&C ruffled bowl. Scarce color.
316. N purple G&C breakfast CR/SUG
317. N purple G&C covered cracker jar. Scarce
318. N 9" elec. blue stippled G&C plate. RARE.
319. N 9" elec purple G&C plate
320. N purple G&C hatpin holder. Nice
321. N purple G&C shot glass. Scarce
322. N purple G&C dresser tray. Scarce
323. N elec blue stippled G&C humidior. RARE!! Does have a couple chips on lid. The irid will override the chips!!
324. N elec purple G&C 10" master berry bowl. Super!!
325. N 8" purple G&C handgrip plate. Nice
326. N 6" purple G&C plate. Nice elec color
327. N 6" purple G&C plate.
328. N 9" green stippled G&C plate. Scarce color
329. N 9" blue stippled G&C plate. Has nice elec highlights!
330. N 9" mari stippled G&C PCE bowl.
331. N 9" green G&C plate w/plain back. SUPER!
332. N 9" green G&C plate w/BW back
333. N purple Tornado small vase. Nice elec highlights
334. N green Tornado small vase. Very scarce color
335. N AO Daisy & Drape vase. Nice flared top. Pretty!
336. N white Daisy & Drape vase w/turned in top. Nice
337. N 9" Lime green Drapery vase. Scarce
338. N 9" IG Drapery vase. Nip on toe.
339. N lime green Drapery candy dish. Good irid!
340. N elec. blue Drapery candy dish. Super irid!
341. N AO Drapery rosebowl. Scarce color.
342. D 10" elec purple Wishbone & Spades Chop plate. WOW!! Super elec. irid!!
343. D 10" PO Four flowers chop plate. Nice irid and opal!
344. D 9" mari Butterfly & Tulip ft'd bowl. Very Scarce!
345. D 9" blue Apple blossom & Twigs plate. Scarce
346. D 9" blue Windflower plate. Scarce
347. D 9" mari Windflower plate.
348. D 10" elec purple Petal & Fan ruffled bowl. Super
349. D 4" purple circle scroll JIP vase. Very hard to find!
350. D 8 1/2" mari Brooklyn Bridge bowl. Scarce
351. D 9" elec. purple Flown & Frames bowl. Nice!
352. D 9" PO Lined lattice vase. Very rare color! Nice
353. D 9" PO pulled lops vase
354. D 9" purple Spirlex vase.
355. D 9" white Big Basketweave vase. Scarce & frosty!
356. N white Grape Arbor water pitcher and 2 tumblers. Nice frosty example. Scarce!
357. N IB 7 pc Grape Arbor water set. Outstanding pastel irid on a very tough water set!
358. N green 5 pc Oriental Poppy water set. Super color and Irid. Pitcher has small check at bottom of handle.
359. N purple 7pc Oriental Poppy water set. Pitcher is beautiful and the tumblers are a very close match!
360. N mari 5pc. Oriental Poppy water set. Scarce
361. D elec purple S-Repeat punch bowl and base. WOW! Killer irid! Bowl does have a crack⊗ BUMMER!
362. D 6" white Grapevine Lattice low ruffled bowl. Pretty
363. D 6" white Grapevine Lattice low ruffled bowl. Pretty
364. D 6" elec purple Wishbone & Spades plate. SUPER!
365. D 6" Elec purple Cherries CRE plate. A Beauty!
366. D 6" white Pool of Pearls plate. Scarce
367. D 7" green Vintage plate.
368. D 6" mari Persian garden plate
369. D purple Stork & Rushes Banded mug
370. D purple Holly Berry handled gravy boat.
371. D purple Grape Arbor ft'd fruit bowl. Very scarce color!
372. D purple fisherman's mugs (2) Choice
373. D mari Stork & Rushes banded mugs (2) choice
374. D purple Beaded Shell mugs (3). Choice
375. M-burg 10" mari Nesting Swans bowl. Nice









376. M-burg 10 purple Nesting Swans bowl. Killer radium!
377. M-burg purple Sunflower pin tray. Scarce
378. M-burg purple Seacoast pin tray. Nice!
379. M-burg 10" purple Whirling leaves bowl. Super!
380. M-burg 8" purple Courthouse bowl. Nice radium irid!
381. M-burg 7" purple Blackberry Wreath tri-corned bowl. Not sure I've seen this shape in this pattern before?? Nice!
382. M-burg 8" purple Nights Stars ruffled bowl. Scarce
383. M-burg 9" purple Trout & Fly 3-1 edge bowl. Scarce
384. M-burg 9" purple Blackberry Wreath 3-1 edge bowl.
385. M-burg 9" mari. Blackberry Wreath 3-1 edge bowl.
386. M-burg 10" purple Many Stars 3-1 edge bowl. Very scarce. 5 pt. star. Radium
387. M-burg purple Hobnail Spittoon. Very scarce and pretty!
388. M-burg 10" mari Many Stars 3-1 edge bowl. Scarce w/nice irid. 6 pt star.
389. M-burg 9" Green Nesting Swans ruffled bowl. NICE!
390. M-burg 10" mari Ohio Star Vase. Super blue radium irid! A killer vase!
391. M-burg 10" mari Holly Whirl ruffled bowl.
392. M-burg 10" purple Primrose ruffled bowl. Nice!
393. M-burg 10" mari Primrose ruffled bowl. Nice
394. M-burg 10" green Primrose ruffled bowl. Scarce
395. M-burg mari Hobnail swirl rosebowl. Nice
396. M-burg 10" purple Peacocks ruffled bowl. Scarce.
397. M-burg 9" purple Holly Sprig ruffled bowl w/CRE edge
398. M-burg 9" green Holly Sprig Var. 3-1 edge bowl. Nice
399. M-burg 10" purple Fleur-de-lis ICS bowl. Super!
400. M-burg 9" purple Rays & Ribbons 3-1 edge bowl. Nice
401. M-burg 5" green Blackberry wreath ruffled bowl.
402. M-burg 5" purple Isaac Benesch ruffled bowl. Nice!
403. F 7" purple 1910 Elks Detroit ruffled bowl. Very scarce. Nice!
404. N 6" purple Eagles Furniture flat plate. RARE & very Pretty!
405. N 6" purple Eagles Furniture 2 sides up plate. Scarce!
406. N 6" purple Davidson's Chocolate 2 sides up plate. Super color! Very hard to find!
407. F GREEN Forget Me Not 6pc water set. Extremely rare chance to buy the whole water set!! Beautiful irid!
408. F marigold Interior Drape Hand painted water pitcher and 5 tumblers. Super Color! Fresia??
409. F green Paneled Dandelion tankard & tumbler. Scarce!
410. F purple 6 pc Paneled Dandelion water set. Nice color!
411. F PURPLE Blackberry Block water pitcher. Very rare. Hardly ever sold!
412. N purple G&C Master punch set w/8 cups. Scarce
413. N purple G&C midsize punch set w/6 cups. Scarce
414. N purple G&C small punch set w/ 6 cups. Nice
415. F mari 18" Rustic funeral vase. Beautiful color!
416. F mari 18" Rustic funeral vase. Beautiful color! Perfect match to 415.
417. F blue 18" Rustic funeral vase. Beautiful color! scarce
418. F 9" Aqua Fine Rib vase. Scarce
419. F 5" Aqua Diamond Point Columns squatty vase. RARE COLOR!
420. West. 8 1/2" BO Scales ruffled bowl. Scarce
421. West. 8 1/2" BO Carolina Dogwood ruffled bowl. Scarce
422. West 8 1/2" BO Smooth Rays ruffled bowl. Nice!
423. West. 4" teal Footed Shell.
424. West. 4" purple Footed Shell
425. Cam. 6" Green Inverted Strawberry round bowl
426. Cam. Green Inverted Strawberry powder jar.
427. Cam. Green Buzz Saw small cruet w/stopper. Scarce
428. Cam Green buzz Saw small cruet w/o stopper
429. West purple Fruit Salad Punch bowl & base. Scarce
430. West. Aqua Teal Orange Peel Punch Set. Very Scarce
431. Imp. mari Waffle Block punch set. Scarce
432. N 8 1/2" elec blue Poinsettia & Lattice ft'd bowl. Super!
433. N 8 1/2" IB Poinsettia & Lattice ft'd bowl. Super pastel!
434. N 8 1/2" IB Embroidered Mums ruffled bowl. Very nice pastel!
435. N 8 1/2" elec blue Embroidered Mums ruffled bowl. Super rich color. Very nice!
436. N 9" White Peacocks plate. Nice pastel irid. Scarce
437. N 9" Purple Peacocks plate. Nice elec highlights
438. N 9" mari Peacocks plate. More on the pastel side. Nice.
439. N 8 1/2" AO Peacocks ruffled bowl. Very scarce & nice!
440. N 8 1/2" elec blue Peacocks ruffled bowl. SUPER!
441. N mari 8 sided Bushel Basket.
442. N white 8 sided Bushel Basket. Nice
443. N AO round Bushel Basket. Nice one!
444. N blue round Bushel Basket
445. N lite AO round Bushel Basket
446. N IG round Bushel Basket
447. N mari round Bushel Basket
448. N dark purple round Bushel Basket.
449. N 8 1/2" IG Poppy Show bowl. Very Scarce color & pretty
450. N 9" mari Poppy Show plate. Very scarce and nice.
451. N 9" white Poppy show plate. Another nice plate
452. N 9" elec blue Rose Show plate. Very nice! Scarce
453. N 8" renninger blue Rose Show Var. plate. Great color! Very RARE.
454. N 9" mari Rose Show plate. Nice dark color.
455. N 8 1/2" pastel AO Rose Show bowl. Super irid. & opal!
456. N 9" white Rose Show plate. Turns up like ICS bowl.
457. N 8 1/2" mari Rose show bowl. NICE!!
458. N 8 1/2" purple Wishbone ft'd bowl.
459. N 8 1/2" mari Wishbone ft'd bowl
460. N elec. purple Memphis fruit bowl & base. Has a couple small nips in pattern. Great color
461. N purple Memphis punch bowl & Base. Chip in pattern
462. N 9" purple G&C plate. Nice elec color
463. N 9" purple G&C plate. Has stretchy irid.
464. N 9" mari G&C plate w/bw back.
465. F 9" blue Peacock @ Urn plate. Nice
466. F 8" blue Peacock @ Urn ICS bowl
467. F 8 1/2" blue Peacock @ Urn 8 ruffled bowl.
468. F 8 1/2" purple Peacock @ Urn 8 ruffled bowl. Scarce
469. F 8 1/2" mari Peacock @ Urn 3-1 edge bowl. Nice
470. F 8 1/2" mari Peacock @ Urn ICS bowl.
471. F 8 1/2" mari Peacock @ Urn 6 ruffled bowl.
472. F 8 1/2" mari Peacock @ Urn 8 ruffled bowl.
473. F mari Orange Tree punch set.
474. 2 Fenton 14" blue Diamond & Spearhead vase. 2x money
475. 2 Fenton 14" mari Diamond & Spearhead vase. 2x money
476. N 8" lavender blue? Star of David & Bows 8 ruffled bowl. Very odd base color!! Neat!
477. N 8 1/2" mari Good Luck bowl w/bw back.
478. N 8 1/2" Mari Good Luck bowl w/rib back
479. N 8 1/2" elec. blue Good Luck bowl w/rib back. NICE!
480. N 8 1/2" Sapphire Good Luck bowl W/rib back. RARE! Nice color and irid.
481. N 8 1/2" elec blue Stippled Good Luck bowl. Scarce.
482. N 8 1/2" blue Stippled Good Luck bowl. Neat elec highlights on high points. Scarce
483. N 9" elec. purple Good Luck plate. Very nice!
484. N purple Singing birds flared mug
485. N purple Singing Birds mug
486. N Elec blue Singing Birds mug
487. N AO stippled Dandelion mug. Very hard to find
488. N elec purple Stippled Dandelion mug. Scarce
489. D blue Grapevine & Lattice tankard. Very nice irid.
490. D mari Grapevine & Lattice tankard.
491. D mari 7pc. Lattice & Daisy tankard set.
492. F mari 7 pc. Fluffy Peacock water set. Super dark color!
493. F mari 7 pc. Floral & Grape water set. Quite nice.
494. F blue 5pc. Floral & Grape water set. Super color!
495. F mari. 7 pc. Orange Tree water set. Nice. May have couple nips on toes.
496. F mari Lotus 7 pc. Water set. Tumblers are banded.

497. **F purple Columbine 7pc water set. Super color!! Nice**
 498. F blue 7pc Cherries water set.
 499. **N blue 7pc Daisy & Little Flowers water set. Scarce**
 500. **Imp Red 10" Wide panel deep bowl. Scarce**
 501. **Imp Red Chesterfield stemmed compote. Rare**
 502. **Imp jewels red 7" bowl.**
 503. **Imp. Red 12" wide panel plate. Scarce!**
 504. **N purple Acorn Burrs butterdish. Scarce**
 505. N purple Acorn Burrs Covered sugar. Nick on lid rim
 506. **F 8 1/2" green Dragon & Lotus ft'd bowl.**
 507. **F 8 1/2" green Dragon & Lotus ICS bowl**
 508. F 8 1/2" blue Dragon & Lotus ICS bowl
 509. **F 8 1/2" Vaseline opal dragon & Lotus 8 ruffled bowl. Light opal on edge.**
 510. **F 8 1/2" dark olive green Dragon & Lotus 8 ruffled bowl. Very scarce color**
 511. F 8 1/2" dark green Dragon & Lotus 8 ruffled bowl.
 512. F 8 1/2" purple Dragon & Lotus 8 ruffled bowl. Super!
 513. **F 8 1/2" green Chrysanthemum ruffled bowl. Scarce**
 514. F 8 1/2" mari Heart & Vine ruffled bowl.
 515. **F 8 1/2" elec blue Heart & Vine CRE bowl. WOW!**
 516. F 8 1/2" green Heart & Vine CRE bowl.
 517. F 8 1/2" green Concord ruffled bowl.
 518. F blue Orange Tree lg shaving mug
 519. F blue Orange Tree lg shaving mug
 520. **F Vaseline Orange Tree mug**
 521. F blue Orange Tree mug
 522. F blue Orange Tree powder jar. Nips on lid
 523. F blue Orange Tree powder jar. may have a couple of nips
 524. F 10" Vaseline Flute vase
 525. F 6" mari Paneled Diamonds & Bows vase.
 526. **F 8 1/2" red Holly 8 ruffle bowl**
 527. **F 8 1/2" slaggy swirly red Holly 8 ruffle bowl. Neat!**
 528. **F 7" amberina/red Acorn bowl.**
 529. **F red Holly hat.**
 530. **F red Holly flared hat**
 531. **F reverse amberina Blackberry Spray JIP hat**
 532. **(2) F red Blackberry Spray JIP hat. Both cracked.**
 533. **F red Holly JIP hat.**
 534. **F white Persian Medallion rosebowl. Super!**
 535. **F 5" red OE JIP hat.**
 536. F mari. Persian Medallion hair receiver. Nice dark color!
 537. **F reverse amberina 6" Stippled Rays bowl.**
 538. **F red 6" Stippled Rays bowl.**
 539. **F red slag Horse Head Medallion nut bowl. Very Scarce!**
 540. **F 8 1/2" red Stag & Holly footed bowl. A bit silvery.**
 541. F 10" blue Two Flowers footed ruffled bowl.
 542. F 9" blue Stag & Holly footed fruit bowl.
 543. F 9" mari. Two Flowers footed ICS bowl.
 544. F 11" blue Two Flowers footed ruffled bowl. Nice irid.
 545. **F 10" Vaseline Two Flowers footed ICS bowl.**
 546. F 10" mari. Stag & Holly footed ICS bowl.
 547. **N AO Leaf & Beads rosebowl. Scarce.**
 548. **N elec. purple Leaf & Beads rosebowl.**
 549. N mari. Leaf & Beads rosebowl w/Sunflower int.
 550. **N AO Leaf & Beads rosebowl. Butterscotchy.**
 551. N green Leaf & Beads rosebowl w/Rays int.
 552. N purple Beaded Cable rosebowl.
 553. N mari. Beaded Cable rosebowl.
 554. **N. IB Beaded Cable rosebowl. Very Scarce!**
 555. N purple Wild Rose nut bowl – points up.
 556. N green Wild Rose nut bowl – points out.
 557. **N elec. blue Wild Rose nut bowl–points out. Very Scarce**
 558. N green Wild Rose nut bowl–points up.
 559. Imp. amber Open Rose rosebowl.
 560. **Imp. 6" elec. purple Heavy Grape ruffled bowl.**
 561. **Imp. 6" elec. purple Heavy Grape round bowl.**
 562. **Imp. 8" amber Heavy Grape plate.**
 563. **Imp. 8" elec. purple Heavy Grape plate.**
 564. **Imp. 9" elec. purple Scroll Embossed flat plate. Super!**
 565. **Imp. elec. purple Scroll Embossed sherbet. Very Scarce!**
 566. Imp. 5" elec. pur Scroll Embossed ruffled bowl w/file ext.
 567. Imp. purple Scroll Embossed ruffled compote.
 568. Imp. 5" purple Windmill sauce.
 569. **Imp. 8" elec. purple Scroll Embossed flared bowl.**
 570. **Imp. 8" purple Scroll Embossed ruffled bowl w/file ext.**
 571. **Imp. elec. purple Open Rose butter dish.**
 572. **Imp. 8" smoke Windmill ruffled bowl.**
 573. **Imp. 8" elec. purple Windmill ruffled bowl.**
 574. **Imp. elec. purple (int.) Open Rose rosebowl. Very Nice!**
 575. **Imp. elec. purple Pansy ruffled bowl.**
 576. Imp purple Pansy ruffled bowl.
 577. **Imp. 6" elec. purple Grape plate.**
 578. **Imp. 4 1/2" mari. Morning Glory vase**
 579. **Imp. 4 1/2" mari. Morning Glory flared vase.**
 580. Imp. green Six Sided candlestick. Scarce.
 581. Imp. Grape elect. Purple decanter w/o stopper. Super color.
 582. **(6) Imp. Grape elec. purple wines (6x money)**
 583. Dugan mari. Golden Harvest wine decanter.
 584. Imp. amber Open Rose rosebowl.
 585. Imp. mari. Flute Toothpick.
 586. **Imp. mari. Little Barrel. Nice color**
 587. Imp. 6 3/4" amber Ripple vase. Nice color!
 588. **Imp. 9 1/4" amber Pansy oval ruffled pickle dish.**
 589. **Imp. 8 1/4" amber Pansy oval pickle dish**
 590. **Imp. 9 1/4" amber Pansy oval flat plate**
 591. **Imp. 10 1/2" purple Homestead plate. Nice!**
 592. Imp. 11 1/2" mari. Heavy Grape plate.
 593. **F 9" mari. Dragon & Strawberry ICS bowl**
 594. **F 9 1/4" purple Ten Mums 3/1 edge bowl.**
 595. **F 9 1/4" mari. Little Fishes footed ruffled bowl.**
 596. **F 9 1/4" blue Little Fishes footed ruffled bowl.**
 597. **F 8 1/2" green Coral ruffled bowl.**
 598. **F 9" blue Orange Tree plate.**
 599. **F 9" purple Plaid plate. Very Rare! Not many around.**
 600. **F 9" blue Persian Medallion plate.**
 601. F mari. Wreath of Roses ruffled compote
 602. F green Wreath of Roses ruffled compote.
 603. F blue Scotch Thistle ruffled compote
 604. F powder blue small Holly compote
 605. F mari. Peacock Tail ruffled compote
 606. F purple Peacock Tail ruffled compote
 607. F mari small Holly compote
 608. F blue small Holly compote
 609. F amy. Birds & Cherries ruffle compote
 610. F mari. Peacock & Urn round compote
 611. F mari. Peacock & Urn ruffled compote
 612. F blue Persian Medallion ruffled compote.
 613. **F green Birds & Cherries bon bon (card tray shape)**
 614. **F mari. Birds & Cherries bon bon & amy. Birds & Cherries bon bon. Choice.**
 615. **F blue Birds & Cherries bon bon (card tray shape)**
 616. **F teal/green Lotus & Grape bon bon. Scarce!**
 617. F blue Strawberry bon bon
 618. F blue Horse Head Medallion JIP shape bowl
 619. F blue Horse Head Medallion footed nut bowl
 620. F 9 1/2" blue Captive Rose plate
 621. **D amy. Many Fruits punch bowl and base. Very Pretty!**
 622. **D mani. Many Fruits Punch bowl and base. Nice!**
 623. **Imp. 17" purple Morning Glory funeral vase. 4 7/8" base. Wonderful color all over!**
 624. **Imp. 12 1/2" purple Morning Glory funeral vase. 4 7/8" base. Also with wonderful color all over!**
 625. **Imp. amber Loganberry vase. Pretty.**
 626. **Imp. mari. Poppy Show vase. Nice!**
 627. **N purple Raspberry water pitcher.**
 628. **N green Raspberry water set w/6 tumblers.**

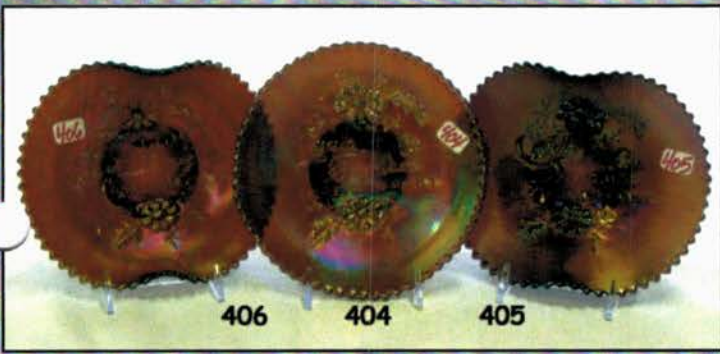
629.	N blue Peacock at the Fountain water pitcher. Pretty.	698.	Imp. Dark mari. Broken Arches 9 pc. Punch set.
630.	N blue Peach water pitcher. Super color but cracked.	699.	D mari. Stork & Rushes 8 pc. Punch set.
631.	(5) N blue Peach tumblers.	700.	Imp.???? mari. Buzz Star 8 pc. Punch set.
632.	F blue Apple Tree water pitcher. Nice!	701.	D white Floral & Grape water pitcher and 1 tumbler. Beautiful color.
633.	F mari. Apple Tree water set w/6 tumblers	702.	Imp. mari. Fashion water Pitcher.
634.	D blue God & Home tumbler	703.	Imp. Grape smoke water pitcher. Very rare! Super pastel irid.
635.	D amy. Heavy Iris tumbler	704.	Cambridge mari. Inverted Strawberry tankard pitcher. Has small check at bottom of handle.
636.	(2) N celeste blue Concave Diamonds tumblers	705.	(4) Cambridge mari. Tumblers match 704. (4x money)
637.	Dugan mari. Jeweled Heart tumbler	706.	F mari. Wine & Roses water pitcher.
638.	Robert Hanson red tumbler	707.	Cambridge green Double Star Tankard pitcher. Super color.
639.	N green Grape & Gothic Arches tumbler	708.	D purple 5 pc. Rambler Rose water set. Very nice!
640.	N green Singing Birds tumbler	709.	D purple Maple Leaf water pitcher.
641.	N blue Peacock at the Fountain tumbler. Great Irid!!!	710.	F mari. 7 pc. Butterfly & Fern water set. Nice!
642.	Cambridge green Double Star tumbler	711.	F mari. 7 pc. Bouquet water set. Scarce.
643.	N 8 1/2" black amy. Three Fruits plate	712.	D mari. 7 pc. Maple Leaf water set. Scarce.
644.	N 9" mari. Three Fruits plate	713.	Imp. mari. 7 pc. Open Rose water set.
645.	N 7 1/4" green G & C footed ICS bowl. Nice color!	714.	Imp. clambroth Waffle Block water pitcher. Rare.
646.	N 8 1/2" green G & C ruffled bowl w/BW back	715.	(4) F blue Butterfly & Fern tumblers (4 x money)
647.	N 8 1/2" amy. G & C ruffled bowl w/BW back	716.	N blue 10 pc. Ground Cherries water set. Super Color and painting.
648.	N 8 1/2" amy. G & C ruffled bowl w/plain back	717.	F mari. Hand painted Lotus water pitcher.
649.	N 8 1/2" mari. G & C plate	718.	N 8 1/2" green Star of David and Bows ruffled bowl.
650.	N 8 1/2" green G & C PCE bowl. A bit silvery	719.	(2) D 7" purple Six Petals bowls. One Money.
651.	F 8 1/2" blue Dragon & Lotus ICS bowl. Nice color.	720.	D 8" PO footed Cherries bowl.
652.	F 8 1/2" blue Dragon & Lotus ICS bowl.	721.	Westmoreland 6" amy. Scales plate. Scarce.
653.	F 6 1/2" blue Two Flowers spatula footed nut bowl.	722.	D 6" mari. Persian Garden plates. (2)
654.	F 6 1/2" lav/light purple Acorn round bowl.	723.	Imp. purple Embossed Scroll large compote.
655.	F 6" powder blue Acorn round bowl	724.	F 6" mari. Stippled Rays plate.
656.	F 6 1/2" blue Acorn ICS bowl	725.	F 6" mari. Persian Medallion flat plate. Very Nice.
657.	F 7 1/2" blue Acorn ruffled bowl	726.	D 8" purple footed Cherries bowl.
658.	F blue two piece small epergne. Does have small nip on bottom where lily connects.	727.	Imp. 9" aqua/green Embossed Scroll plate. Nice color.
659.	Dugan PO Interior Swirl tri-corner rosebowl.	728.	Imp. 7" amber Grape plate.
660.	F 7 1/2" purple spatula footed ruffled bowl.	729.	Imp 7" elec. purple Grape plate.
661.	N 8 1/2" amy. Rainbow ruffled bowl w/ Plain back.	730.	F mari. Vintage 2-handled card tray.
662.	F 8 1/2" amy. Captive Rose ruffled bowl.	731.	F 8" blue Orange Tree six ruffle bowl.
663.	N elec blue Poppy pickle dish. Nice!	732.	F 7" amy. Peacock Tail ruffled bowl.
664.	N 8 3/4" amy. Grape Leaves ruffled bowl.	733.	F 9" green Peacock Tail 6 ruffle bowl.
665.	N 8 1/2" green Grape Leaves ruffled bowl.	734.	F 8 1/2" mari. Peacock Tail 3/1 edge bowl.
666.	N 8 1/2" mari. Strawberry ruffled bowl w/BW back.	735.	Imp. purple squatty candle sticks.
667.	N 8 3/4" amy. Rainbow plate w/BW back. WOW!	736.	Imp.??? mari. Swirl Base candlesticks.
668.	F 7 1/4" amy. Ribbon Tie ICS bowl. Nice!	737.	(3) mari. Novelty ashtrays.
669.	N 9" green G & C PCE bowl. Super pretty!	738.	F 9" mari. Chrysanthemum ruffled bowl.
670.	F 9" amy. Holly flat plate. Rare color and very pretty.	739.	D 9" blue Cosmos Vt. ruffled bowl
671.	F 7 1/2" green Thistle CRE bowl	740.	Imp. mari. Birds & Grapes wall pocket.
672.	F 8 1/2" blue Thistle ruffled bowl	741.	Imp. Iron Cross 8" purple large flared vase. Roughness around bottom.
673.	F 8" blue Thistle 3/1 edge bowl.	742.	F 10" mari. Butterfly & Berry stretched vase. Nice.
674.	F 8 1/2" purple Vintage 3/1 edge bowl	743.	Imp. 8" mari. Beaded Bulls Eye squatty vase. Base chip.
675.	F 7 1/4" blue Vintage ruffled bowl	744.	N 12" AO Four Pillars vase. Tiny nick on foot.
676.	F 8" amy. Raged Robin 3/1 edge bowl.	745.	F 8 1/2" white Leaf Chain ruffled bowl.
677.	F 8" blue Stag & Holly spatula footed ruffled bowl.	746.	N 6" purple squatty Thin Rib vase.
678.	Imp. 9" amber Open Rose plate. Pretty	747.	Imp.10" mari. Morning Glory JIP vase.
679.	F mari. Daisy Cut bell	748.	Westmoreland 7" green Corinth vase.
680.	N amy. Grape & Cable cologne.	749.	Westmoreland 9" teal blue Concave Flute.
681.	N amy. Flowers & Frames dome footed ruffled bowl.	750.	(2) N 9" green Feathers vases (2 x money)
682.	Westmoreland mari. Little Bo Peep mug	751.	D mari. Mary Ann vase.
683.	Imp. 10" mari. Acanthus plate.	752.	F 16" mari. April Showers vase w/CRE top. Super color!
684.	(3) N amy. Springtime berry bowls. One lot.	753.	N 8 1/2" green Three Fruits dome footed bowl.
685.	Westmoreland 8 1/2" BO Scales ICS bowl.	754.	N 8 1/2" odd root beer Three Fruits dome footed bowl. Very Pretty!
686.	F 8 1/2" amy. Leaf Chain ICS bowl	755.	N 8 1/2" lavender Three Fruits dome footed bowl. Nice!
687.	(2) IB Swan salts. Choice.	756.	D 8" mari. Pony ruffled bowl.
688.	F 6" Vaseline Peacock Tail ruffled bowl.	757.	N olive green G & C hat made from tumbler.
689.	(2) F 6" Persian Medallion ruffled bowls. One in Mari. One in blue.	758.	2 pieces of Hanson. Selling choice.
690.	D amy. Wreathed Cherry large oval berry bowl.	759.	N 9" purple Fruits & Flowers ruffled bowl.
691.	D amy Wreathed Cherry small berry bowl.	760.	F 10" mari. Two Flowers footed ruffled bowl.
692.	F 10" blue Cherry Circles 8 ruffled bowl.		
693.	F 8 1/2" blue Cherry Circles 8 ruffle bowl		
694.	F 10" green Feathered Serpent ruffled bowl		
695.	F 8 1/2" amy. Wild Blackberry ruffled bowl		
696.	F 7" blue Leaf Chain flat plate. Scarce.		
697.	Imp. purple Broken Arches 9 pc. Punch set. Average color.		

- _____ 761. F 5" green Blackberry Spray ruffled hat. Scarce.
- _____ 762. F 5" blue Fern ruffled hat.
- _____ **763. D white Constellation compote**
- _____ 764. F blue Persian Medallion large compote.
- _____ 765. N purple Blossom Time compote.
- _____ 766. F purple Iris compote.
- _____ 767. F green Iris compote.
- _____ **768. D PO Beaded Panels ruffled compote.**
- _____ **769. West. BO Smooth Rays stemmed compote**
- _____ **770. West. PO Pearly Dots ruffled compote.**
- _____ 771. F mari. Stream of Hearts compote
- _____ 772. Dugan PO Question Marks stemmed CRE plate
- _____ 773. West. Amber Leaf Swirl compote
- _____ 774. West. Purple Leaf Swirl compote.
- _____ **775. Fostoria pink Brocaded Palms centerpiece bowl. Scarce!**
- _____ 776. N purple Daisy & Plume rosebowl w/Rasp. Int. Nip on toes.
- _____ 777. F 10" green Stippled Rays 3/1 edge bowl.
- _____ 778. N mari. Daisy & Plume candy dish.
- _____ 779. D white 4" Basketweave base or punch base.
- _____ 780. Fenton Flowers green rosebowl. Chip on foot.
- _____ 781. F blue Garland rosebowl.
- _____ **782. Beautiful mari. Stemmed compote. Maker unknown.**
- _____ 783. F green Blackberry Bramble compote.

- _____ 784. (2) F light green and amber Smooth Rays compotes.
- _____ 785. N purple Rainbow compote.
- _____ 786. (2) Novelty Morning Glory tankards
- _____ 787. F 8 1/2" cobalt blue Autumn Acorns ruffled bowl
- _____ 788. N green Rainbow compote
- _____ 789. Sowerby blue Chicken on Nest.
- _____ 790. F 8 1/2" purple Vintage 3/1 edge bowl.
- _____ 791. F 5" mari. Pinecone ruffled sauce.
- _____ 792. F 5" blue Persian Medallion ICS bowl.
- _____ 793. Purple Top of the Morning Hatpin
- _____ 794. West. 8" PO Scales ICS bowl.
- _____ 795. F 5" mari. Sailboats ruffled dish.
- _____ 796. D 8 1/2" white Fanciful ICS bowl.
- _____ 797. N purple Scales compote.
- _____ 798. West. Teal Louisa rosebowl.
- _____ 799. (2) buttermilk goblets. 1 purple, 1 mari. Selling as pair.
- _____ **800. N 8 1/2" Renninger blue Rose Show Vt. plate. Very nice color. Does have a 1/4" base chip. RARE!!!**

Thanks for participating in today's auction!
Next Carnival Glass Auction will be
August 28th in New Philadelphia, Ohio.
The Gene Metro Collection

Notes



406

404

405



378

379



407



408



302

310



415

417

416



307



