

R.S. Prussia, Carnival Glass & Hummels

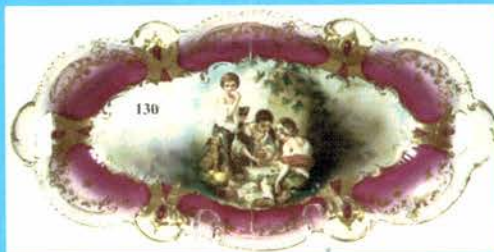
# AUCTION



Saturday, June 19th - 9:30 a.m. - 2004

Sheraton Four Points Hotel  
(Earth City Exit #231b off I-70)

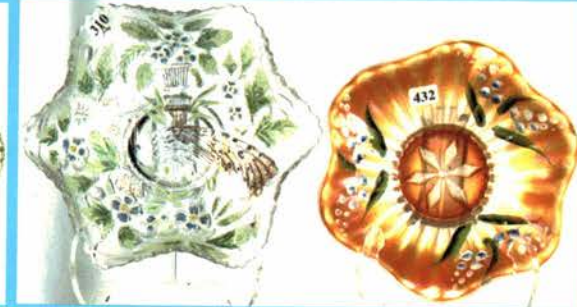
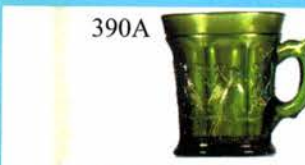
St. Louis, Missouri



Preview:  
Friday 6pm  
Saturday 7:30am



Visit [www.woodyauction.com](http://www.woodyauction.com) for a map & more photos.

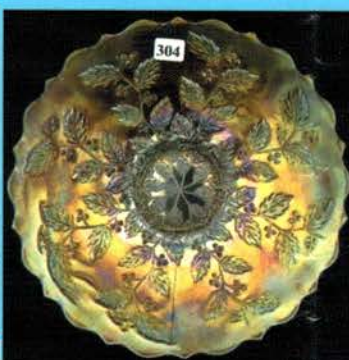


- 228 5 1/4" HUMMEL - #89/1 "LITTLE CELLIST" - TRADE MARK 6  
229 5" HUMMEL - #447 "MORNING CONCERT"  
230 4 3/4" HUMMEL - #135 "SOLOIST" - TRADE MARK 5  
230A 4 1/2" HUMMEL - #198 2/0 HOME FROM MARKET - MARK #5  
231 5" HUMMEL - #447 "MORNING CONCERT" - TRADE MARK 7  
231A 4 3/4" HUMMEL - #91A FACING LEFT ANGLE WALL POCKET - MARK 4  
232 5" HUMMEL - #131 "STREET SINGER" - TRADE MARK 5  
232A 4" HUMMEL - #58/0 PLAYMATES - MARK 4  
233 6" HUMMEL - #89/1 "LITTLE CELLIST" - TRADE MARK 3  
233A 3 3/4" HUMMEL - #111 3/0 WAYSIDE HARMONY - MARK 4  
234 6" HUMMEL - #437 "THE TUBA PLAYER" - TRADE MARK 6  
234A 4 3/4" HUMMEL - #91B FACING RIGHT ANGLE WALL POCKET - MARK 4  
235 6 1/4" X 7" HUMMEL - #406 "PLEASANT JOURNEY" (MADE FOR ONLY ONE YEAR) - TRADE MARK 6  
235A 3 1/2" HUMMEL - #57/0 CHICK GIRL - MARK 4  
236 5" HUMMEL - #150/0 "HAPPY DAYS" - TRADE MARK 3  
236A 6" HUMMEL - #142/1 APPLE TREE BOY - MARK 5  
237 3" HUMMEL - #457 "SOUND THE TRUMPET" - TRADE MARK 7  
237A 4 1/2" HUMMEL - #199/0 FEEDING TIME - MARK 3  
238 5 1/4" HUMMEL - #32/0 "LITTLE GABRIEL" - FULL BEE MARK  
239 4 3/4" HUMMEL - #71-2/0 "STORMY WEATHER" - TRADE MARK 6  
240 FULL HUMMEL SET - THREE ANGLES MUSICIAN CANDLE HOLDERS #38/39/40 - FULL BEE MARKS  
240A 5 1/4" HUMMEL - #257/0 FOR MOTHER - DATED 1963  
241 4" HUMMEL - #493 "TWO HANDS/ ONE TREAT" - TRADE MARK 7  
241A (3) 2 1/2" HUMMELS - #238A,B&C MUSIC ANGLE CANDLESTICK HOLDERS - MARK 4  
242 5 1/2" HUMMEL - #431 "THE SURPRISE" - CLUB ISSUE  
242A 4 1/2" HUMMEL - #174 SHE LOVES ME, SHE LOVES ME NOT - MARK 3  
243 5 1/4" HUMMEL - #440 "BIRTHDAY CANDLE" - CLUB ISSUE  
243A 5" HUMMEL - #377 BASHFUL - DATED 1987  
244 5" HUMMEL - #112/1 "JUST RESTING" - FULL BEE IMPRESSED - pigtail chip  
244A TWO PIECE HUMMEL - #214A MADONNA & CHRIST CHILD - MARK 4  
245 4" HUMMEL - #409 "COFFEE BREAK" - CLUB ISSUE  
245A 5 3/4" HUMMEL - #328 CARNIVAL - DATED 1983  
246 5" HUMMEL - #315 "MOUNTAINEER" - TRADE MARK 6  
246A 4" HUMMEL - #11 2/0 MERRY WANDERER - MARK 4  
247 4 3/4" HUMMEL - #47/0 "GOOSE GIRL" - TRADE MARK 2  
247A 4 1/4" HUMMEL - #11 2/0 MERRY WANDERER - DATED 1980  
248 4" HUMMEL - #47-3/0 "GOOSE GIRL" - TRADE MARK 5  
249 4 1/4" HUMMEL - #142-3/0 "APPLE TREE BOY" - TRADE MARK 6  
250 7" HUMMEL - #56 "CULPRITS" - CROWN MARK  
250A 5 3/4" HUMMEL - #12/I CHIMNEY SWEEP - MARK 4  
251 5" HUMMEL - #143/0 "BOOTS" - TRADE MARK 3  
251A 3 1/4" HUMMEL - #453 ANGLE SERENADE - DATED 1987  
252 6 1/2" HUMMEL - #115 "CHIMNEY SWEEP" - TRADE MARK 2  
252A 5" HUMMEL - #152/0 UMBRELLA BOY - DATED 1982  
253 4 1/4" HUMMEL - #141-3/0 "APPLE TREE GIRL" - TRADE MARK 4  
253A 4 1/4" HUMMEL - #12/0 CHIMNEY SWEEP - MARK 1  
254 4" HUMMEL - #141-3/0 "APPLE TREE BOY" - TRADE MARK 4  
254A 3 1/2" HUMMEL - GOOD NIGHT  
255 5" HUMMEL - #111/1 "WAYSIDE HARMONY" - TRADE MARK 5  
255A 5 1/2" HUMMEL - #123 MAX AND MORITZ - DATED 1983  
256 4" HUMMEL - #409 "COFFEE BREAK" - CLUB ISSUE  
256A 5" HUMMEL - #127 DOCTOR - DATED 1991  
257 6 3/4" HUMMEL - #142/1 "APPLE TREE BOY" - TRADE MARK 2  
257A 3 1/2" HUMMEL - #117 ADVENT CANDLESTICK BOY WITH HORSE - MARK 2  
258 6 1/2" HUMMEL - #141 "APPLE TREE GIRL" - TRADE MARK 2  
259 5 1/2" HUMMEL - #440 "BIRTHDAY CANDLE" - CLUB ISSUE  
260 7" HUMMEL - #163 "WHITSUNTIDE" - CROWN MARK - has corner repair  
260A 3 1/2" X 6 1/2" HUMMEL - #62 HAPPY PASTIME ASHTRAY - MARK 4  
261 5 3/4" HUMMEL - #217 "BOY W/ TOOTHACHE" - TRADE MARK 7  
261A 5 1/4" HUMMEL - #15/0 HEAR YE, HEAR YE - MARK 5  
262 5 1/4" HUMMEL - #449 "THE LITTLE PAIR" - CLUB ISSUE  
262A 5" HUMMEL - #382 VISITING AN INVALID - DATED 1981  
263 1971 HUMMEL PLATE  
263A 4" HUMMEL - TWO HANDS, ONE TREAT - CLUB BEE MARK  
264 3" X 6" DISPLAY SIGN - "BLUMENKINDER"  
264A (2) 7 1/2" HUMMELS - 1979 COLLECTOR PLATES - ONE BOX  
265 (2) HUMMEL COASTERS IN BOXES  
265A 3 1/4" X 6 1/4" HUMMEL - #166 BOY WITH BIRD ASHTRAY - MARK 4  
266 PAIR GOEBEL "FRIAR TUCK" SALT & PEPPER SHAKERS  
266A 6" HUMMEL - #690 COLLECTORS CLUB MEMBER TRIVET SET IN WOODEN FRAME  
267 6 3/4" WHITE OPALESCENT "TOWN PUMP"  
267A 5 1/4" HUMMEL - #307 GOOD HUNTING - MARK 4  
268 3 3/4" CARNIVAL GLASS JACK-IN-PULPIT SHAPED VASE - HOLLY PATTERN - MARIGOLD  
268A 7 1/2" HUMMEL - 1971 COLLECTORS PLATE  
269 1 3/4" SIGNED L.C.T. #R7793 FOUR DIMPLED TOOTHPICK HOLDER - GOLD IRIDESCENT  
269A (3) 7 1/2" HUMMELS - TWO 1973 PLATES; ONE 1975 PLATE  
270 7" CARNIVAL GLASS HATPIN HOLDER - GRAPE & CABLE PATTERN - MARIGOLD  
270A 7 1/2" HUMMEL - 1971 COLLECTORS PLATE  
271 5 1/4" CARNIVAL GLASS COMPOTE - PEACOCK AT URN PATTERN - MARIGOLD  
272 CARNIVAL GLASS MUG - STORK & RUSHES PATTERN - MARIGOLD  
273 CARNIVAL GLASS IMPERIAL GRAPE PATTERN WATER PITCHER & MATCHING TUMBLER - MARIGOLD  
274 5" X 6" CARNIVAL GLASS COMPOTE - PEACOCK TAIL PATTERN - MARIGOLD  
275 PAIR 9" CARNIVAL GLASS VASES - RUSTIC PATTERN - MARIGOLD  
275A 7" CARNIVAL GLASS BOWL - THREE FRUITS PATTERN - AMETHYST  
276 9 1/4" CARNIVAL GLASS PLATE - THREE FRUITS PATTERN - MARIGOLD  
277 6 1/2" CARNIVAL GLASS RUFFLED BOWL - LION PATTERN - MARIGOLD  
278 7" CARNIVAL GLASS DISH - THREE FRUITS PATTERN, STIPPLED - MARIGOLD  
279 13 1/2" CARNIVAL GLASS TANKARD - ORIENTAL POPPY PATTERN - AMETHYST - VERY NICE!  
280 10 1/4" CARNIVAL GLASS RUFFLED BOWL - GRAPE & CABLE PATTERN - MARIGOLD - 2" crack  
280A 8 3/4" CARNIVAL GLASS BOWL - EMBROIDERED MUMS PATTERN - COBALT BLUE  
281 CARNIVAL GLASS THREE FOOTED ROSEBOWL - BEADED CABLE PATTERN - AQUA OPAL!  
282 9" CARNIVAL GLASS RELISH - PANSY PATTERN - HONEY MARIGOLD  
283 9" CARNIVAL GLASS PLATE - GRAPE & CABLE PATTERN - MARIGOLD  
284 3 1/2" CARNIVAL GLASS MUG - ORANGE TREE PATTERN - MARIGOLD  
285 3 1/2" CARNIVAL GLASS MUG - ORANGE TREE MUG - LIGHT MARIGOLD  
285A 8 1/2" CARNIVAL GLASS BOWL - STRAWBERRY PATTERN - PURPLE

- 286 3 1/2" CARNIVAL GLASS MUG - ORANGE TREE PATTERN - BLUE
- 287 3 1/2" CARNIVAL GLASS MUG - ORANGE TREE PATTERN - BLUE
- 288 5" CARNIVAL GLASS COMPOTE - COIN SPOT PATTERN - PEACH OPAL
- 289 CARNIVAL GLASS COVERED DISH - HEN ON NEST - MARIGOLD
- 290 CARNIVAL GLASS CREAMER & SUGAR - LUSTRE ROSE PATTERN - MARIGOLD
- 290A 9" CARNIVAL GLASS PLATE - THREE FRUITS PATTERN, STIPPLED - AMETHYST - NICE IRIDESCENCE!
- 291 4 1/4" CARNIVAL GLASS NUT BOWL - GRAPE DELIGHT PATTERN - MARIGOLD
- 292 4" X 7" CARNIVAL GLASS GRAVY BOAT - NAUTILUS PATTERN - PEACH OPAL
- 293 7 1/2" CARNIVAL GLASS BABY DISH - STORK ABC'S - MARIGOLD
- 294 3 3/4" CARNIVAL GLASS COMPOTE - HOLLY PATTERN - MARIGOLD
- 295 4" CARNIVAL GLASS COMPOTE - HOLLY PATTERN - MARIGOLD W/ VASELINE STEM
- 295A 9 3/4" CARNIVAL GLASS VASE - FOUR PILLARS PATTERN - AQUA OPAL
- 296 3 3/4" CARNIVAL GLASS MUG - ORANGE TREE MUG - MARIGOLD & VASELINE
- 297 CARNIVAL GLASS BUTTERDISH - DEEP MARIGOLD
- 298 CARNIVAL GLASS THREE FOOTED ROSEBOWL - DAISY & PLUME PATTERN - MARIGOLD
- 299 CARNIVAL GLASS WATER PITCHER & (6) MATCHING TUMBLERS - RASPBERRY PATTERN - DEEP MARIGOLD
- 300 11 1/4" CARNIVAL GLASS DRESSER TRAY - GRAPE & CABLE PATTERN - MARIGOLD
- 300A 5 1/2" CARNIVAL GLASS ROSEBOWL - DRAPERY PATTERN - AQUA OPAL
- 301 4" CARNIVAL GLASS SQUARE MOUTH ROSEBOWL - PERSIAN MEDALLION PATTERN - MARIGOLD
- 302 CARNIVAL GLASS THREE FOOTED SPOONER - BUTTERFLY & BERRY PATTERN - MARIGOLD
- 303 3" X 6 1/2" CARNIVAL GLASS COMPOTE - QUESTION MARK PATTERN - PEACH OPAL
- 304 9 3/4" CARNIVAL GLASS PLATE - HOLLY PATTERN - WHITE
- 305 9" CARNIVAL GLASS PLATE - PEACOCK ON THE FENCE PATTERN - ICE GREEN - ONE SIDE IS SLIGHTLY PULLED UP
- 305A CARNIVAL GLASS LEAF & BEADS ROSEBOWL - AQUA OPAL!
- 306 9 1/2" CARNIVAL GLASS PLATE - ORANGE TREE PATTERN - WHITE
- 307 9" CARNIVAL GLASS RUFFLED PLATE - APPLE BLOSSOM TWIGS PLATE - WHITE
- 308 CARNIVAL GLASS BUSHEL BASKET - WHITE
- 309 CARNIVAL GLASS WATER PITCHER & (7) MATCHING TUMBLERS - WREATHED CHERRY PATTERN - MARIGOLD
- 310 9" CARNIVAL GLASS SPATULA FOOTED BOWL - THREE FRUITS PATTERN, STIPPLED - AQUA OPAL!
- 310A RARE! 8 3/4" CARNIVAL GLASS BOWL - PEACOCK AT URN W/ ENAMELED HIGHLIGHTS - WHITE
- 311 CARNIVAL GLASS TRI CORNER GRAVY DISH - HOLLY & BERRY PATTERN - MARIGOLD
- 312 5 3/4" CARNIVAL GLASS PEDESTAL ROSEBOWL - DAISY & PLUME PATTERN - MARIGOLD
- 313 8 1/4" CARNIVAL GLASS WATER PITCHER - WINDMILL PATTERN - MARIGOLD
- 314 9" CARNIVAL GLASS BOWL - HOLLY PATTERN - LIGHT MARIGOLD
- 315 CARNIVAL GLASS CREAMER & SUGAR - PANSY PATTERN - HONEY AMBER
- 315A CARNIVAL GLASS TWO ROW OPEN EDGE BASKET - CHERRY RED!
- 316 CARNIVAL GLASS THREE FOOTED ROSEBOWL - LEAF & BEADS PATTERN - AQUA OPAL
- 317 CARNIVAL GLASS TWO HANDLED PEDESTAL BON-BON - THREE FRUITS PATTERN - GREEN
- 318 CARNIVAL GLASS TWO ROW OPEN EDGE BASKET - BLACKBERRY PATTERN - GREEN
- 319 8 3/4" CARNIVAL GLASS PLATE - GRAPE & CABLE PATTERN - GREEN
- 320 8" CARNIVAL GLASS SPATULA FOOTED BOWL - PEACOCK & GRAPE PATTERN - GREEN
- 320A 8 3/4" CARNIVAL GLASS BOWL - HEARTS & FLOWERS PATTERN - RARE ICE BLUE - edge chip
- 321 9 1/4" CARNIVAL GLASS PLATE - EMBOSSED SCROLL PATTERN - SEAWEED GREEN
- 322 6" CARNIVAL GLASS RUFFLED PLATE - DUGAN CHERRY PATTERN - PEACH OPAL
- 323 8 3/4" CARNIVAL GLASS BOWL 3N1 EDGE - THISTLE PATTERN - GREEN
- 324 6 1/2" CARNIVAL GLASS JACK-N-PULPIT VASE - GREEN
- 325 CARNIVAL GLASS THREE FOOTED ROSEBOWL - LEAF & BEADS PATTERN - AQUA OPAL
- 325A 7" CARNIVAL GLASS BOWL - ACORN PATTERN - TEAL
- 326 5" CARNIVAL GLASS TWO PIECE EPERGNE - VINTAGE PATTERN - GREEN
- 327 6 1/4" CARNIVAL GLASS TRI-CORNER DISH - RAY PATTERN - GREEN
- 328 8" CARNIVAL GLASS BOWL - CORINTH & VT. PATTERN BY DUGAN - GREEN
- 329 CARNIVAL GLASS GRAVY DISH - RASPBERRY PATTERN - PURPLE
- 330 CARNIVAL GLASS THREE FOOTED ROSEBOWL - FINE CUT & ROSES PATTERN - PURPLE
- 330A CARNIVAL GLASS EIGHT SIDED BUSHEL BASKET - WHITE
- 331 8 3/4" CARNIVAL GLASS BOWL - THREE FRUITS PATTERN - AMETHYST
- 332 7 1/2" CARNIVAL GLASS BOWL - THREE FRUITS PATTERN - AMETHYST
- 333 CARNIVAL GLASS 3 PIECE TABLE SET (CREAMER, SUGAR & SPOONER) - MILLERSBURG HANGING CHERRIES PATTERN - AMETHYST
- 334 6 1/2" CARNIVAL GLASS RUFFLED PLATE - DUGAN CHERRY PATTERN - AMETHYST
- 335 7 1/2" CARNIVAL GLASS BOWL - THREE FRUITS PATTERN - BLUE
- 335A CARNIVAL GLASS GRAPE & CABLE TRI CORNER WHIMSEY PUNCH CUP - AMETHYST
- 336 9 3/4" CARNIVAL GLASS ICE CREAM BOWL - MILLERSBURG HANGING CHERRIES PATTERN - AMETHYST
- 337 8 1/2" CARNIVAL GLASS PEDESTAL BOWL - THREE FRUITS PATTERN - AMETHYST
- 338 9" CARNIVAL GLASS PLATE - THREE FRUITS PATTERN, STIPPLED - NICE BLUE!
- 339 (2) MINIATURE CARNIVAL GLASS COMPOTES - BLACKBERRY PATTERN - BLUE
- 340 9 1/2" CARNIVAL GLASS PLATE - THREE FRUITS PATTERN - BLUE
- 340A CARNIVAL GLASS GRAPE & CABLE TRI CORNER WHIMSEY PUNCH CUP - GREEN
- 341 9" CARNIVAL GLASS PLATE - STRAWBERRY PATTERN - AMETHYST
- 342 9" CARNIVAL GLASS PLATE - GRAPE & CABLE PATTERN - AMETHYST
- 343 CARNIVAL GLASS TWO ROW OPEN EDGE BASKET - BLACKBERRY PATTERN - BLUE
- 344 CARNIVAL GLASS ROSEBOWL - GRAPE DELIGHT PATTERN - BLUE
- 345 12" CARNIVAL GLASS BANANA BOWL - GRAPE & CABLE PATTERN - AMETHYST

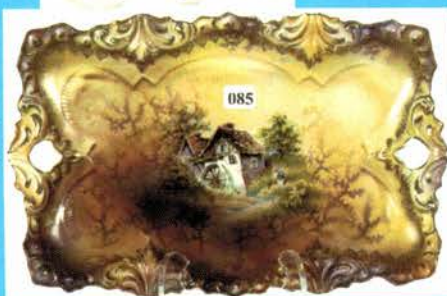
- 345A** 9" CARNIVAL GLASS BOWL - HEARTS & FLOWERS PATTERN - PURPLE
- 346** 6 1/4" CARNIVAL GLASS FOLDED CARD TRAY - GRAPE & CABLE PATTERN - AMETHYST
- 347** 7" CARNIVAL GLASS HATPIN HOLDER - GRAPE & CABLE PATTERN - PURPLE
- 348** CARNIVAL GLASS THREE FOOTED FERNER - VINTAGE PATTERN - BLUE
- 349** 7 1/2" CARNIVAL GLASS BOWL - GRAPE & CABLE PATTERN - AQUA
- 350** CARNIVAL GLASS TWO HANDLED CRACKER JAR - GRAPE & CABLE PATTERN - PURPLE
- 350A** 9 3/4" CARNIVAL GLASS BOWL - FOUR FLOWERS PATTERN - PURPLE
- 351** 8 1/2" CARNIVAL GLASS BOWL 3NI EDGE - VINTAGE PATTERN - BLUE
- 352** 9" CARNIVAL GLASS BOWL - GRAPE LEAVES PATTERN - AMETHYST
- 353** 10 3/4" CARNIVAL GLASS BOWL - GRAPE & CABLE PATTERN - PURPLE
- 354** 6 3/4" CARNIVAL GLASS HATPIN HOLDER - GRAPE & CABLE PATTERN - AMETHYST
- 355** (3) MISC. CARNIVAL GLASS HATPINS - DRAGONFLIES; MEDALLION; OVAL TEXTURE
- 355A** 9 1/2" CARNIVAL GLASS THREE FOOTED FRUIT BOWL - GRAPE & CABLE PATTERN - DARK MARIGOLD
- 356** 6 1/4" CARNIVAL GLASS "TOWN PUMP" - VERY NICE IVY! - PURPLE
- 357** 5 1/2" CARNIVAL GLASS CANDLESTICK HOLDERS - GRAPE & CABLE PATTERN - PURPLE
- 358** CARNIVAL GLASS BUTTERDISH - GRAPE & CABLE PATTERN - AMETHYST
- 359** CARNIVAL GLASS WATER PITCHER & (6) MATCHING TUMBLERS - FLORAL & GRAPE PATTERN - AMETHYST
- 360** 11" CARNIVAL GLASS DRESSER TRAY - GRAPE & CABLE PATTERN - PURPLE
- 360A** 9" CARNIVAL GLASS MASTER BOWL & (2) MATCHING BERRY DISHES - GRAPE & CABLE PATTERN - GREEN - master w/ tooth chip
- 361** 5" CARNIVAL GLASS PERFUME BOTTLE - GRAPE & CABLE PATTERN - PURPLE
- 362** 9" CARNIVAL GLASS COLOGNE BOTTLE - GRAPE & CABLE PATTERN - PURPLE
- 363** 5 3/4" CARNIVAL GLASS CANDLESTICK HOLDER - GRAPE & CABLE PATTERN - PURPLE
- 364** CARNIVAL GLASS NUT BOWL - GRAPE DELIGHT PATTERN - AMETHYST
- 365** 9" CARNIVAL GLASS MASTER BERRY BOWL W/ (6) MATCHING BERRY DISHES - GRAPE & CABLE PATTERN - PURPLE
- 365A** 9 3/4" CARNIVAL GLASS BOWL - AUSTRALIAN KANGAROO - MARIGOLD
- 366** 8 1/2" CARNIVAL GLASS SWEETMEAT - GRAPE & CABLE PATTERN - PURPLE
- 367** 8 1/2" CARNIVAL GLASS SWEETMEAT - GRAPE & CABLE PATTERN - PURPLE
- 368** 6 3/4" X 11" THREE FOOTED CENTER PIECE BOWL - GRAPE & CABLE PATTERN - PURPLE - GREAT IRID.
- 369** CARNIVAL GLASS POWDER BOX (no lid) - GRAPE & CABLE PATTERN - PURPLE - sm chip
- 370** 6 1/2" X 7" OPEN COMPOTE - MILLERSBURG HANGING CHERRIES COMPOTE - AMETHYST
- 370A** 9 1/2" CARNIVAL GLASS BOWL - AUSTRALIAN KOOKABURRA - MARIGOLD
- 371** CARNIVAL GLASS TUMBLER - PEACH PATTERN - ELECTRIC BLUE
- 372** 5 1/2" X 6 1/2" CARNIVAL GLASS COMPOTE - BLACKBERRY BRAMBLE PATTERN - AMETHYST
- 373** CARNIVAL GLASS THREE FOOTED ROSEBOWL - GARLAND PATTERN - BLUE
- 374** 5" X 11" CARNIVAL GLASS THREE FOOTED BOWL - OPEN ROSE PATTERN - SMOKE
- 375** 7" CARNIVAL GLASS BOWL - ACORN PATTERN - CHERRY RED!!
- 375A** 11 1/4" CARNIVAL GLASS TANKARD - HEAVY IRIS PATTERN - MARIGOLD
- 376** 7" CARNIVAL GLASS BOWL - ACORN PATTERN - LIGHT MARIGOLD
- 377** 9" CARNIVAL GLASS BOWL - HOLLY PATTERN - GREAT RED COLOR!
- 378** 8 3/4" CARNIVAL GLASS ICE CREAM SHAPED BOWL - HOLLY PATTERN - BLUE
- 379** 5" CARNIVAL GLASS COMPOTE - PEACOCK AT URN PATTERN - BLUE
- 380** 4 1/2" CARNIVAL GLASS ROSEBOWL - MILLERSBURG HOBNAIL PATTERN - AMETHYST
- 380A** 21 1/2" CARNIVAL GLASS VASE - FENTON RUSTIC PATTERN - COBALT BLUE
- 381** 9" CARNIVAL GLASS PLATE - PEACOCK ON THE FENCE PATTERN, STIPPLED - ELECTRIC BLUE
- 382** 9 1/4" CARNIVAL GLASS NORTHWOOD VASE - PURPLE
- 383** CARNIVAL GLASS TWO HANDLED LOVING CUP - ORANGE TREE PATTERN - BLUE
- 384** CARNIVAL GLASS TRI CORNER "WHIMSEY" COMPOTE - AMARYLLIS PATTERN - PURPLE
- 385** 9 1/2" CARNIVAL GLASS VASE - FINE RIBBED PATTERN - CHERRY RED! - UNIQUE FOLD AT TOP
- 385A** (12) CARNIVAL GLASS PUNCH CUPS - ACORN & BURRS PATTERN - GREEN
- 386** 9" CARNIVAL GLASS VASE - FINE RIBBED PATTERN - MARIGOLD
- 387** 5" CARNIVAL GLASS COMPOTE - WREATH OF ROSES PATTERN - GREEN
- 388** CARNIVAL GLASS TWO ROW OPEN EDGE BASKET - RED!
- 389** 9 1/2" CARNIVAL GLASS BOWL - MILLERSBURG HOLLY SPRIG PATTERN - AMETHYST
- 390** CARNIVAL GLASS TWO HANDLED LOVING CUP - ORANGE TREE PATTERN - BLUE
- 390A** CARNIVAL GLASS MUG - SINGING BIRD PATTERN - NICE GREEN!
- 391** 9" CARNIVAL GLASS 3NI EDGE BOWL - STIPPLED RAYS PATTERN - AMETHYST
- 392** CARNIVAL GLASS WATER PITCHER & (6) MATCHING TUMBLERS - WREATH CHERRY PATTERN - DARK PURPLE
- 393** FENTON OPEN EDGE BASKET - CONTEMPORARY
- 394** CARNIVAL GLASS MUG - BEADED SHELL PATTERN - AMETHYST
- 395** CARNIVAL GLASS TWO ROW OPEN EDGE BASKET - PASTEL BLUE
- 395A** (2) CARNIVAL GLASS MUGS - SINGING BIRD PATTERN - MARIGOLD
- 396** (3) CARNIVAL GLASS TOOTHPICK HOLDER - GREEN, MARIGOLD, PURPLE - FLUTE PATTERN
- 397** 7 1/2" CARNIVAL GLASS THREE FOOTED BOWL - BEADED CABLE PATTERN - LIGHT GREEN
- 398** 9" CARNIVAL GLASS BOWL - STAR OF DAVID PATTERN - PURPLE
- 399** 9 1/2" CARNIVAL GLASS VASE - RUSTIC PATTERN - PURPLE
- 400** 9 1/2" CARNIVAL GLASS JACK-N - PULPIT VASE - MARIGOLD
- 400A** 9 1/4" CARNIVAL GLASS PLATE - ORANGE TREE PATTERN - WHITE
- 401** 6 1/2" CARNIVAL GLASS VASE - RIPPLE PATTERN - MARIGOLD
- 402** (4) CARNIVAL GLASS SHERBET DISHES - FLUTE PATTERN

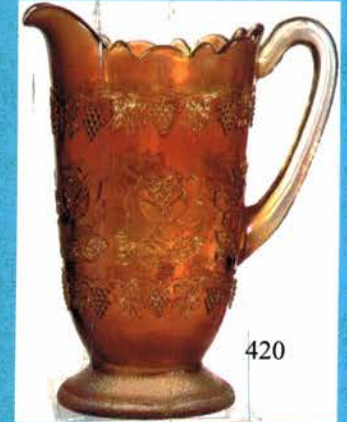
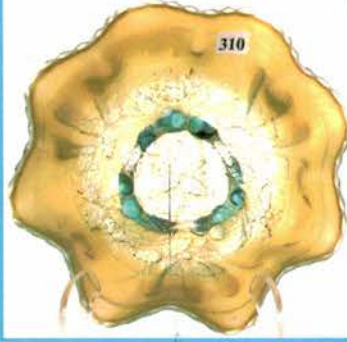
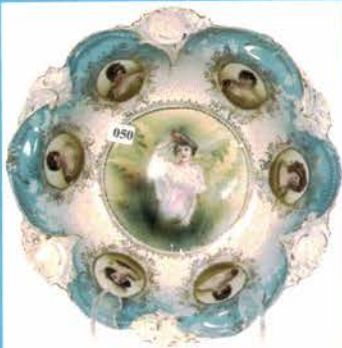




Photos not to scale.  
Please read description  
for actual size.

See you at the next  
Woody Auction.





LEE MARKLEY  
PO BOX 306  
MENTONE IN 46539-0306



1877

**WOODY**  
**AUCTION**  
P.O. Box 618  
Douglas, KS 67039 (316) 747-2894

PRE-SORTED  
FIRST CLASS  
U.S. POSTAGE  
PAID  
PERMIT #662  
WICHITA, KS