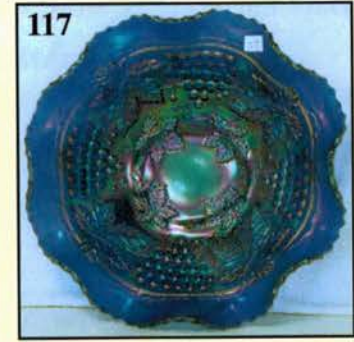
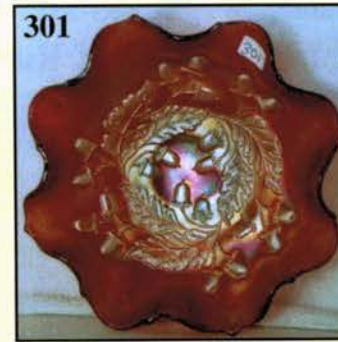
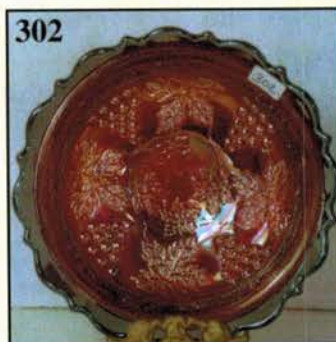
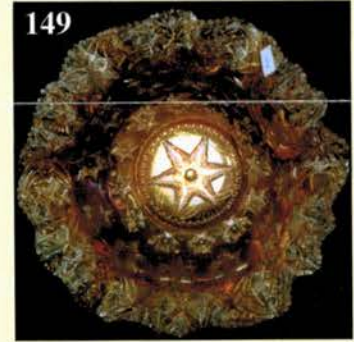
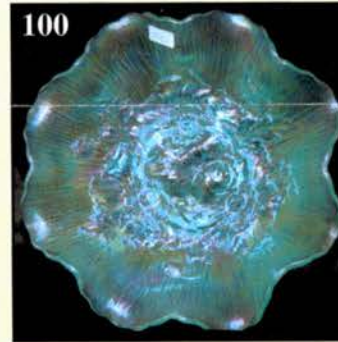
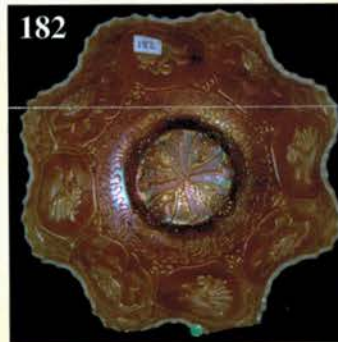
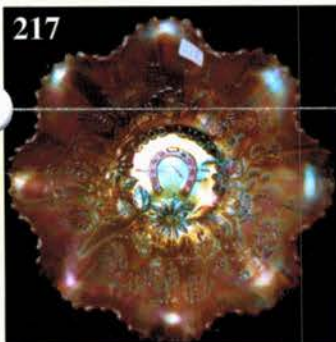
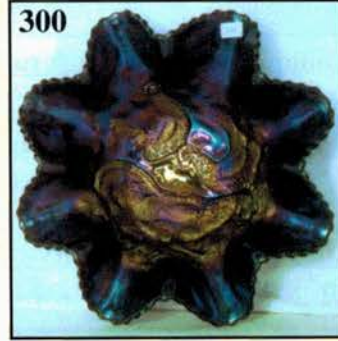
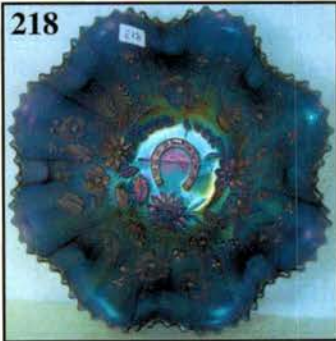


[www.AWK-SHN.com](http://www.AWK-SHN.com)

# CARNIVAL GLASS AUCTION

Saturday, June 12, 2004 9:00 a.m. C.D.T.

★ STEVE BERANEK COLLECTION FROM IOWA ★



Held By the Mickey Reichel Antique & Auction L.C.

Office: 660-882-5292 • Home: 660-882-5283

☞ **NEW WEB SITE: [www.AWK-SHN.com](http://www.AWK-SHN.com)**

E-mail: [mreichel@undata.com](mailto:mreichel@undata.com)

# Held Inside the Mickey Reichel Auction Center

1 Mile North of I-70 on Hwy. 5, Exit 101, Boonville, Missouri • 20 Miles West of Columbia, MO on I-70



Preview Friday 12 p.m. - 5 p.m. and 7:30 a.m. - 9:00 a.m. Day of Auction

**TERMS:** Cash or Good Check, VISA and MasterCard accepted.



3% Clerking Fee on all purchases except for payment of cash or check. Proper I.D. required.

**WEB SITE:** [www.AWK-SHN.com](http://www.AWK-SHN.com)

## **ABSENTEE BID POLICY:**

**WRITE IN BIDS:** If you are unable to attend the auction, we will be happy to accept absentee bids which must be received by THURSDAY, JUNE 10, 2004. Don't Delay. E-Mail: [mreichel@undata.com](mailto:mreichel@undata.com)

**FOR AUCTION PRICE RESULTS:** Send \$3.00 and Large S.A.S.E. to 18350 Hunters Ridge Ct., Boonville, MO 65233-2971

**PLEASE NOTE:** There is a **\$5 handling charge for each successful bid which will be added to the selling price** for all write-in bids. This is in addition to the cost of postage, insurance and packing. Your write-in bid will be entered just as if you are present and bidding. **Successful bidders will be notified in 1 to 3 days by the auctioneer (so be sure to include your phone number).** Direct mail bids to Auctioneer Mickey Reichel, 18350 Hunters Ridge Ct., Boonville, MO 65233-2971. Terms: Cash or Check accepted with proper I.D. and Social Security Number and References. Announcements made day of the auction supercede all printed material. Not Responsible for Accidents or Sold Items.

**No return on any items once they leave the Auction Center (No Exceptions).\*\*\*\***

Call for additional information: 660-882-5292 days or 660-882-5283 evenings before 9:00 p.m.

**FAX: 660-882-5292 (evening hours start FAX transmission after beep)**

**MAIL BIDS:** Items are bid on in perfect condition with average or above iridescence OR as listed in the brochures. Bids will not be carried out when damage on an item has been found during the auction.

**PEOPLE PRESENT AT AUCTION ARE RESPONSIBLE FOR FINDING ANY PINHEADS, WEAR, SPOTTINESS, MANUFACTURER'S DEFECTS OR ANY OTHER MINOR FLAWS, ETC. \*\*\*\*\***

**NOTE:** Read each line, as we have accentuated the type of no particular piece, all are special.

**Make Reservations EARLY at one of these local motels:**

Days Inn: 660-882-8624 • Comfort Inn: 660-882-5317 • Super 8: 660-882-2900 • Holiday Inn: 660-882-6882

**Auction Consists of Rarity, Great Irid. and Variety**

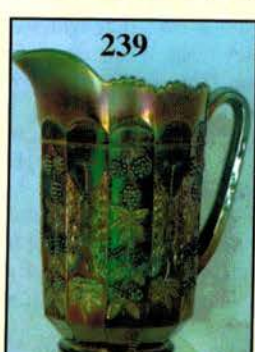
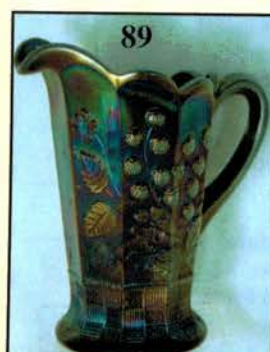
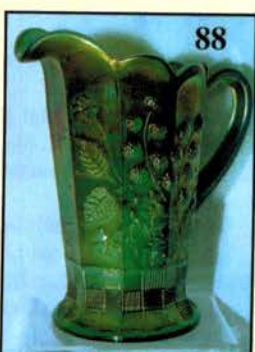
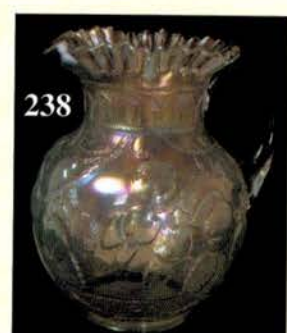
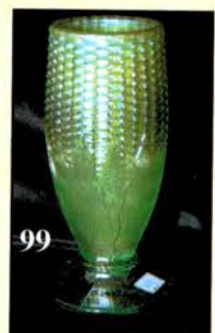
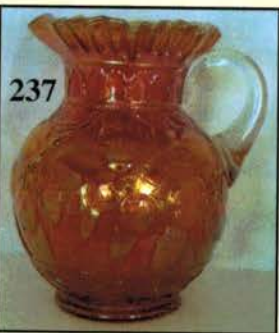
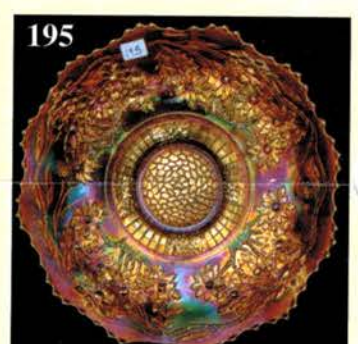
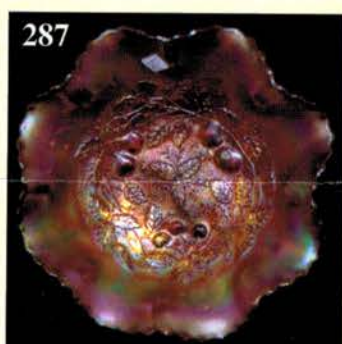
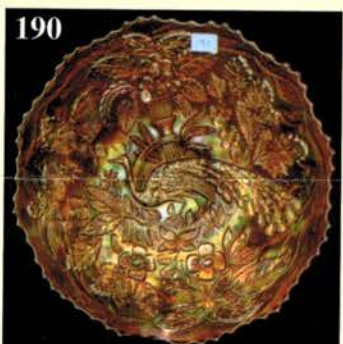
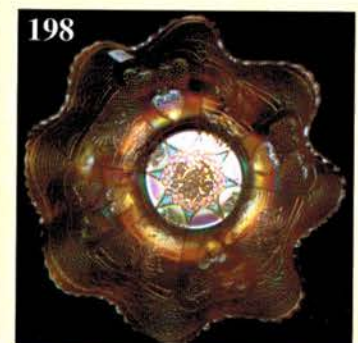
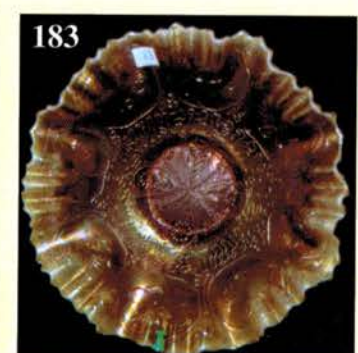
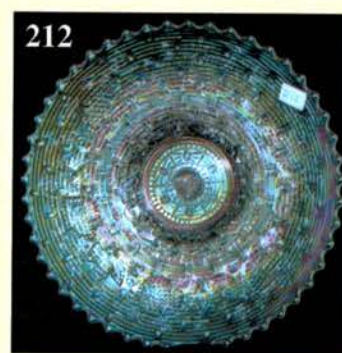
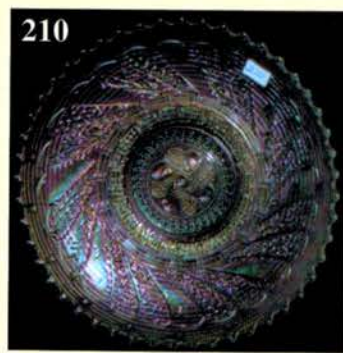
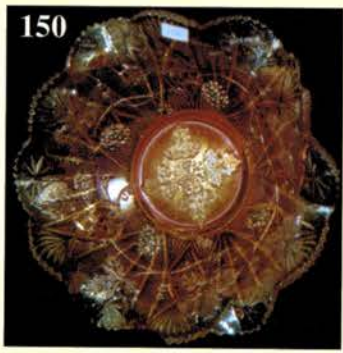
**SPECIAL NOTE:** Many of you know Steve and know the type and quality of the carnival glass he collected-and, by the way, he is still an active collector. For those of you who do not, I would like to take the time to comment on the caliber of this collection. Steve had an uncanny eye for superior color and iridescence, as well as condition. Whether it is a \$25 or \$2500 piece, his standards are uniformly high, resulting in one of the most beautiful and exciting sales we have had. So many of his pieces have such superb iridescence that they would be an upgrade for virtually any collection. It is our privilege and honor to offer this collection at auction.

## **THANK YOU FOR ATTENDING TODAY**

1. M-Imp. Octagon Decanter, no stopper
2. P-N 10-1/4" Tree Trunk vase
3. G-Fenton 11" Plume Panels vase
4. M-Dugan 8-1/2" deep, 10-ruffle Garden Path Vt. bowl-Soda Gold ext.
5. G-Fenton 9", 3 in 1 edge Coin Dot bowl
6. M-Dugan 8-1/2", 10-ruffle Double Stem Rose bowl

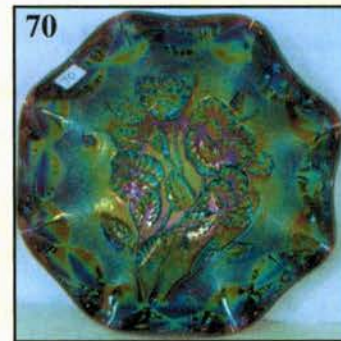
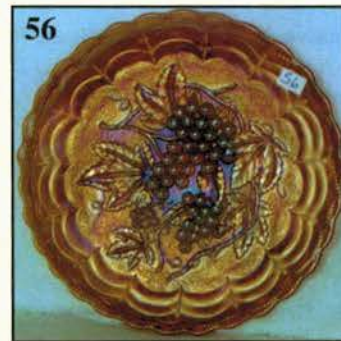
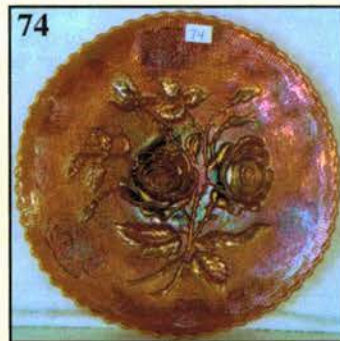
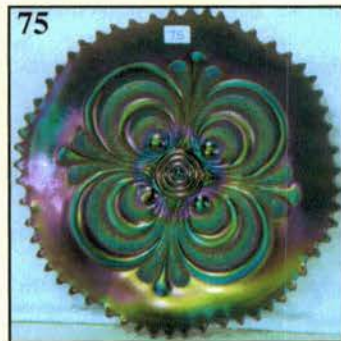
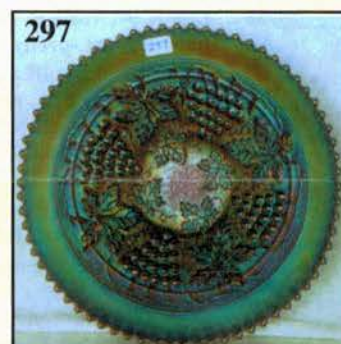
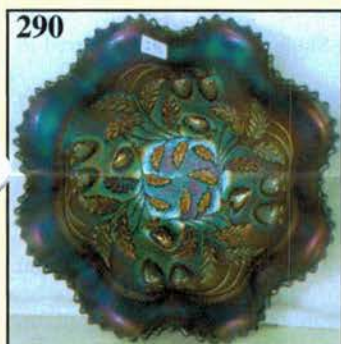
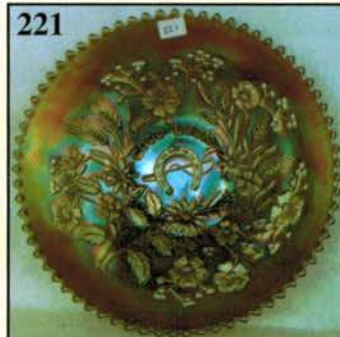
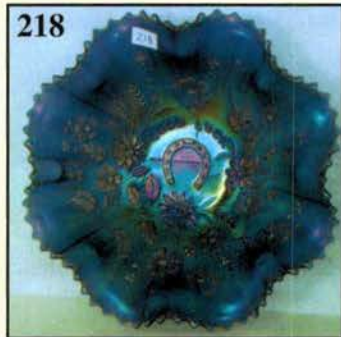
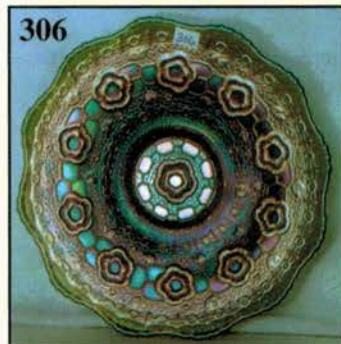
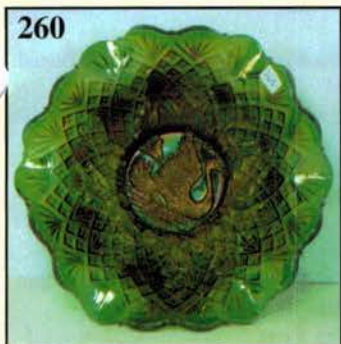
7. M-Fenton JIP Open Edge basket
8. B-Fenton 8-ruffle Holly compote
9. M-Imp. Fashion tumbler
10. G-Fenton Butterfly and Berry tumbler-very scarce
11. M-Enamel Dec. Magnolia tumbler
12. Electric P-Imp. grape tumbler
13. Pumpkin M-Fenton Apple Tree tumbler
14. Frosty W-Fenton Apple Tree tumbler
15. M-Imp. Crabclaw tumbler-factory ground base

16. **Great M-N Oriental Poppy tumbler**
17. Electric P-Imp. Diamond Lace tumbler
18. **Rich M-Dugan Fisherman's mug-very scarce**
19. P-Dugan Fisherman's mug
20. **Scarce M-Dugan Harvest Flower tumbler**
21. M-Grape and Palisade tumbler
22. **M-Australian Daisy tumbler**
23. Scarce M-Beaded Panels & Grapes 5-3/8" tall tumbler
24. **Celeste B-N Concave Diamonds tumbler**
25. M-Imp. Grape tumbler-excellent example
26. **Pastel M-Fenton Bouquet tumbler**
27. P-N Grape Arbor tumbler-above average
28. **Electric B-N Peach tumbler**
29. B-Enamel Dec. Ground Cherries tumbler
30. **Scarce Smoke-Imp. Soda Gold tumbler**
31. Dark M-Imp. Octagon 4" tumbler-factory ground base
32. **Honey Amber-U.S. Glass Cosmos and Cane tumbler-outstanding**
33. M-N Grape & Cable tumbler-loaded with pinks and blues
34. **Dark M-Fenton Orange Tree shaving mug-super color!**
35. M-Oxbow mug-lots of pinks
36. **M-Imp. Small Rib 3-1/2" tall wines-5x\$**
37. P-Imp. Flute toothpick holder-fantastic example
38. **Fabulous Electric Purple-Imp. Thumbprint and Ovals 5-1/4" vase-internal fracture-still fabulous**
39. P-Imp. Flute breakfast creamer and sugar-superb multi-color irid.
40. **M-Imp. 5-1/2" Colonial Lady vase-scarce and nice**
41. M-Imp. Fashion breakfast creamer and sugar
42. **Scarce Smoke-Imp. Fashion breakfast creamer and sugar**
43. M-My Lady's covered powder dish-quality example
44. **M-Fenton Daisy Cut bell-very scarce item**
45. M-Enameled Poppies 5-1/4" lamp shades-2x\$
46. **M-Golden Thistle 4-3/4" plates-Choice A or B**
47. Lav.-Sunk Daisy 5" ftd. rosebowl-beautiful rarity
48. **M-Sunk Daisy 3-3/4" ftd. rosebowl-quite rare in this size (not listed in guides)**
49. Rich M-Cambridge Inverted Strawberry cuspidor-signed Near-Cut
50. **G-5-1/2", CRE quilted pattern cuspidor w/pontil mark-unknown pattern but a beautiful rarity**
51. Smoke-Imp. Grape 9" low ruffled plate-radium dandy
52. **Lav-Imp Grape 9-1/4" low ruffled plate-pastels deluxe**
53. P-Imp. Grape 9", 8-ruffle bowl-sizzling electric irid.
54. **amber-Imp. grape 8-3/4", 8-ruffle bowl-luscious irid.**
55. P-Imp. Grape 11", 8-ruffle master bowl-unbelievable color
56. **Amber-Imp. Grape 9" flat plate-outstanding piece**
57. M-Imp. Grape 9-1/4" flat plate-loads of pinks and greens
58. **P-Imp. Grape decanter with 6 matching wines-a match made in heaven!**
59. M-Imp. Heavy Grape 8" plate-a beauty
60. **P-Imp. Heavy Grape 8-1/4" plate-iridescence galore**
61. Pastel M-Imp. Heavy Grape 8" plate-radium beauty
62. **Scarce Smoke-Imp. Heavy Grape 8-1/2" plate-rare size and great color**
63. Amber-Imp. Heavy Grape 8" plate-also scarce
64. **Beautiful G-Imp. Heavy Grape 8-1/4" plate-definitely NOT helios, a great example!**
65. M-Imp. Fashion rosebowl-loaded with color
66. **M-Imp. Star and File rosebowl-internal fracture**
67. P-Imp. 9", 8-ruffle Hattie bowl-really, really nice
68. **P-Imp. Zippered Heart 10" master bowl with 6 matching berry bowls-astounding irid.**
69. Amber-Imp. Pansy 9", 8-ruffle bowl-delightful
70. **Superb P-Imp. Pansy 9", 8-ruffle bowl-tiny nick on rim, so what? Fabulous irid.**
71. P-Imp. Open Rose 7", round, ftd. bowl-exciting piece
72. **Lavender Ice-Imp. Pansy 9-1/2" low ruffled plate-Wow!**
73. Smoke-Imp. Pansy 9-1/4" low ruffled bowl/plate?-lovely
74. **Awesome Amber-Imp. Open Rose 9-1/4" flat plate**
75. P-Imp. Scroll Embossed 9-1/4" plate-plain marie, multi electric-hot plate
76. **M-Imp. Shell 9-1/2" plate-starred base**
77. P-Imp. Windmill 9-3/4" oval dresser tray-very difficult to find and beautiful, internal heat feather, factory made
78. **M-Imp. Windmill 9-1/2" oval dresser tray-nice radium finish**
79. M-Imp. Pansy 9-3/4" dresser tray
80. **Outstanding Smoke-Imp. Star Medallion milk pitcher**
81. Radium M-Imp. Star Medallion milk pitcher-nice one
82. **Beautiful Smoke-Imp. Poinsettia milk pitcher**
83. M-Imp. Poinsettia milk pitcher-outstanding
84. **M-Imp. Beaded Acanthus milk pitcher-uncommon pattern**
85. Dark M-Imp. Windmill milk pitcher
86. **M-Imp. 474 milk pitcher**
87. Dark M-Imp. Flute and Cane 8-1/4" pitcher
88. **Fantastic G-N Raspberry milk pitcher-Oh My!**
89. Great P-N Raspberry milk pitcher
90. **M-Imp. 18-1/2" Morning Glory funeral vase-4-7/8" starred base**
91. G-Imp. Grape water carafe
92. **M-Imp. Beaded Bullseye 12" vase**
93. M-Imp. Swirl 7-1/4" vase
94. **Pastel M-Imp. Swirl 7-1/4" vase**
95. Smoke-Imp. Swirl 7-1/4" vase-excellent irid.
96. **M-N 6-1/2" squatty Fine Rib vase-5-1/2" top**
97. G-N 8-1/4" Fine Rib vase-starred base
98. **Scarce G-N 12" mid-size Tree Trunk funeral vase-loaded with color-Big Guy**
99. Dark Ice G-N Corn vase with stalk base-blue highlights
100. **Ice B-N 9", ruffled Poppy Show bowl-outstanding blues, pinks and yellows, rare item-A Beauty**
101. M-N 10", ruffled Grape and Cable bowl, with five 6" ruffled berry bowls
102. **G-Fenton 10" Grape and Cable ftd. fruit bowl, plain interior**
103. M-Fenton 10" Grape and Cable ftd. fruit bowl-Persian Medallion interior
104. **B-Fenton 10" Grape and Cable ftd. fruit bowl, plain interior**
105. M-Fenton 10", ftd., ICS Chrysanthemum/Windmill bowl-pinks and blues
106. **M-Fenton 9", 8-ruffle, ftd. Two Flowers fruit bowl-blues and yellows**
107. W-Fenton 9", 8-ruffle Peacock at Urn bowl-frosty
108. **Sapphire stretch-N 8-1/2" round compote-tree bark base**
109. Sapphire stretch-N 4" rolled-in rim compote-tree bark base (eight-sided)
110. **Teal stretch-Colonial 4-3/4" flared compote**
111. White Ice stretch-Colonial 4-1/4", round sherbet
112. **M-Fenton 10", 8-ruffle, ball ftd. Water Lily bowl-blues and pinks**
113. Gorgeous Clambroth-Imp. Open Rose 11" round, flared, ftd. centerpiece bowl-plain interior-excellent iridescence
114. **Rare Dark Amber-Imp. Scroll Embossed 5-1/2", 8-ruffle bowl-File ext.-radium electric irid. on this very unusual color**



- \_\_\_\_\_ 115. Dark M-N Grape and Gothic Arches creamer-great piece
- \_\_\_\_\_ 116. **Dark M-N Three Fruits Medallion 8-3/4", dome base bowl-clean fruit, nice coloration**
- \_\_\_\_\_ 117. Electric B-N 10-3/4", ruffled, collar base Grape and Cable Vt. fruit bowl-outstanding irid.-WOW!
- \_\_\_\_\_ 118. **P-N 9-3/4", collar base, ruffled, stippled Grape and Cable Vt. bowl-BW ext.**
- \_\_\_\_\_ 119. M-N 9-3/4", collar base, ruffled, stippled Grape and Cable Vt. bowl-BW ext.
- \_\_\_\_\_ 120. **Scarce G-N stippled Grape and Cable bonbon-beautiful example**
- \_\_\_\_\_ 121. M-N stippled Grape and Cable bonbon-loaded with color
- \_\_\_\_\_ 122. **Super Pastel M-N stippled Grape and Cable bonbon-lots of blues**
- \_\_\_\_\_ 123. Unusual P Slag-N stippled Grape and Cable bonbon-scarce one
- \_\_\_\_\_ 124. **Fantastic Electric B-N stippled Grape and Cable bonbon-radium gem**
- \_\_\_\_\_ 125. P-Grape and Cable powder jar with lid-fine example
- \_\_\_\_\_ 126. **G-N Grape and Cable hatpin holder-normal chips on feet**
- \_\_\_\_\_ 127. P-N Grape and Cable hatpin holder
- \_\_\_\_\_ 128. **Dark M-N Grape and Cable hatpin holder**
- \_\_\_\_\_ 129. Pastel M-N 8" Grape and Cable plate with leaf center-BW ext.-scarce size
- \_\_\_\_\_ 130. **G-N 7-3/4" Grape and Cable handgrip plate-BW ext.-scarce color and shape**
- \_\_\_\_\_ 131. Rich M-N 7-3/4" Grape and Cable handgrip plate-BW ext.
- \_\_\_\_\_ 132. **M-Mlbg. 7-1/2", 3 in 1 edge Little Stars bowl**
- \_\_\_\_\_ 133. M-Mlbg. 7-3/4", 6-ruffle Little Stars bowl-lots of color
- \_\_\_\_\_ 134. **G-Mlbg. 7-3/4", 6-ruffle Little Stars bowl-blues and greens**
- \_\_\_\_\_ 135. A-Mlbg. 7-1/2", 6-ruffle Little Stars bowl
- \_\_\_\_\_ 136. **Radium G-Mlbg. 8-3/4", 6-ruffle Hanging Cherries bowl-beautiful-neat shape**
- \_\_\_\_\_ 137. P-Mlbg. 9-1/2", flared Peacock master berry bowl-radium and pretty
- \_\_\_\_\_ 138. **M-Mlbg. 9", 6-ruffle Peacock at Urn Mystery bowl-rare color**
- \_\_\_\_\_ 139. G-Mlbg. 9", 6-ruffle Peacock at Urn Mystery bowl-lovely satin irid.
- \_\_\_\_\_ 140. **M-Mlbg. 10-1/4", 6-ruffle, collar base Fleur de Lis bowl-radium and nice**
- \_\_\_\_\_ 141. Radium M-Mlbg. 6", spade shape Holly Sprig nappy-lots of pinks
- \_\_\_\_\_ 142. **G-Mlbg. 6", spade shape Holly Sprig nappy-radium**
- \_\_\_\_\_ 143. A-Mlbg. 6", spade shape Holly Sprig nappy-radium
- \_\_\_\_\_ 144. **Outstanding G-Mlbg. Sunflower pin tray-one of the best I've seen**
- \_\_\_\_\_ 145. P-Mlbg. Peacock 5-1/2", flared berry bowl-electric purple and blue peacock
- \_\_\_\_\_ 146. **Radium A-Mlbg. 5-3/4", ICS Grape Wreath bowl, Clover and Feather variant center-superb example**
- \_\_\_\_\_ 147. Dark M-Mlbg. Swirled Hobnail rosebowl-excellent piece
- \_\_\_\_\_ 148. **Scarce M-Mlbg. Swirled Hobnail cuspidor (or spittoon)-nice, nice, nice**
- \_\_\_\_\_ 149. M-Mlbg. 9-3/4", 3 in 1 edge Many Stars bowl-six point star-radium
- \_\_\_\_\_ 150. **M-Mlbg. 9-3/4", 6-ruffle Grape Leaves bowl-very scarce color and pattern**
- \_\_\_\_\_ 151. Pumpkin M-Fenton 6-1/4" Persian Medallion plate-plain ext.
- \_\_\_\_\_ 152. **BA-Fenton 6-1/4" Persian Medallion plate-scarce and nice**
- \_\_\_\_\_ 153. Outstanding B-Fenton 6-3/8" Persian Medallion plate-plain ext.
- \_\_\_\_\_ 154. **A-Fenton 6" tri-corner Persian Medallion plate**
- \_\_\_\_\_ 155. M-Fenton 7-1/4" Persian Medallion plate, with Wide Panel ext.-rare size and exterior pattern
- \_\_\_\_\_ 156. **P-Imp. Grape 6-1/2" plate-radium electric**
- \_\_\_\_\_ 157. M-Imp. Grape 6-1/2" plate-way above average color
- \_\_\_\_\_ 158. **M-Imp. Star and File 6-1/4" plate-radium beauty**
- \_\_\_\_\_ 159. M-Imp. Star and File 5-3/4" plate-colorful and uncommon size
- \_\_\_\_\_ 160. **B-Fenton 6" Cherry Chain plate with Orange Tree ext.-extremely colorful**
- \_\_\_\_\_ 161. Scarce W-Fenton 6-1/2" Cherry Chain plate with Orange Tree ext.
- \_\_\_\_\_ 162. **Dark M-Fenton 7-3/4" Leaf Chain plate-Grape ext.-nice eye appeal**
- \_\_\_\_\_ 163. B-Fenton 7-1/2" Leaf Chain plate-Grape ext.
- \_\_\_\_\_ 164. **M-Fenton 6-3/4" Little Flowers plate-stretchy irid.**
- \_\_\_\_\_ 165. A-Fenton 6" tri-corner Little Flowers plate-very scarce item
- \_\_\_\_\_ 166. **Rare G-Fenton 6-3/4" 2-Row Open Edge square basket-beauty!**
- \_\_\_\_\_ 167. G-Fenton 6" JIP Open Edge basket-scarce and pretty
- \_\_\_\_\_ 168. **G-Fenton 6" 2-Sides Up Open Edge basket-just as good as the two above**
- \_\_\_\_\_ 169. RED-Fenton 10-3/4" Fine Rib vase-always in demand
- \_\_\_\_\_ 170. **PO-Pastel swan salt-very scarce and nice**
- \_\_\_\_\_ 171. Radium M-Fenton Holly 9-7/8" plate
- \_\_\_\_\_ 172. **B-Fenton Holly 9-1/2" plate-pinks, blues, the works!**
- \_\_\_\_\_ 173. Clambroth-Fenton Holly 9-1/2" plate-lots of pinks
- \_\_\_\_\_ 174. **A-Fenton Holly 9-1/2" plate-multi color irid.**
- \_\_\_\_\_ 175. W-Fenton Holly 10" plate-blues, pinks and golds, tried to be a chop plate!
- \_\_\_\_\_ 176. **Scarce G-Fenton Holly 9-1/2" plate-good color**
- \_\_\_\_\_ 177. G-Fenton Holly 9-1/4", 3 in 1 edge bowl-tough color and shape-emerald hi-lites
- \_\_\_\_\_ 178. **B-Fenton Ribbon Tie 9-1/2", 3 in 1 edge low bowl/plate**
- \_\_\_\_\_ 179. Magnificent G-Fenton Peacock and Grape 8-3/4", 3 in 1 edge bowl
- \_\_\_\_\_ 180. **Vas Opal-Fenton Peacock and Grape 8", spat ftd. ICS bowl-minor chips on spurs**
- \_\_\_\_\_ 181. Amber-Fenton Dragon and Lotus 8-3/4", collar base, ruffled bowl-above average
- \_\_\_\_\_ 182. **Rare Moonstone-Fenton Dragon and Lotus 8-3/4", collar base, ruffled bowl-fantastic find!**
- \_\_\_\_\_ 183. Marigold Opal-Fenton Dragon and Lotus 9", 3 in 1 edge, collar base bowl-hard to find
- \_\_\_\_\_ 184. **G-Fenton Dragon and Lotus 8-3/4", ruffled, collar base bowl**
- \_\_\_\_\_ 185. Dark M-Fenton Peacock at Urn 8-1/2", 3 in 1 edge bowl-tough shape to find
- \_\_\_\_\_ 186. **G-Fenton Peacock at Urn 8-1/2", 3 in 1 edge bowl-scarce color and shape seldom seen**
- \_\_\_\_\_ 187. A-Fenton Peacock at Urn 8-1/2", 3 in 1 edge bowl-couple of pulled points
- \_\_\_\_\_ 188. **Electric B-Fenton Peacock at Urn 8-1/4", ICS bowl-fabulous!-A Keeper**
- \_\_\_\_\_ 189. W-Fenton Peacock at Urn 9-1/4" plate-lots of pastels
- \_\_\_\_\_ 190. **Dark M-Fenton Peacock at Urn 9-1/4" plate-stretchy**
- \_\_\_\_\_ 191. B-Fenton Peacock at Urn 9-1/4" plate
- \_\_\_\_\_ 192. **Exquisite B-Fenton Orange Tree 9-1/4" plate-you have to see it to believe it!**
- \_\_\_\_\_ 193. Clambroth-Fenton Orange Tree 9-1/4" plate with trunk center
- \_\_\_\_\_ 194. **W-Fenton Orange Tree 9-1/2" flat plate-loaded with blue irid**
- \_\_\_\_\_ 195. Fabulous M-Fenton Orange Tree 9-3/4" flat plate

- \_\_\_\_\_ 196. **Electric B-Fenton Stag and Holly 9", 8-ruffle, ftd. fruit bowl-as good as they get**
- \_\_\_\_\_ 197. G-Fenton Butterfly and Berry 9", round master berry bowl with 6 small berry bowls-wonderful, scarce set and how many sets have you ever seen in green?
- \_\_\_\_\_ 198. **M-Fenton Dragon and Strawberry 9-1/2", ruffled, ftd. bowl-uncommonly nice-SCARCE**
- \_\_\_\_\_ 199. M-Fenton Kittens cup and saucer
- \_\_\_\_\_ 200. **Rare G-Fenton 9" Autumn Acorns flat plate-these do not turn up very often and this is a nice one**
- \_\_\_\_\_ 201. PO-Dugan Apple Blossom Twigs 8-3/4", 10-ruffle bowl-smooth ext.
- \_\_\_\_\_ 202. **P-Dugan Apple Blossom Twigs 9", 10-ruffle bowl-Basketweave ext.-electric highlights**
- \_\_\_\_\_ 203. M-Dugan Pony 8-1/2", 10-ruffle bowl-scarce edge treatment
- \_\_\_\_\_ 204. **P-Dugan Pony 8-1/2", 10-ruffle bowl-scarce edge treatment**
- \_\_\_\_\_ 205. PO-Dugan Double Stem Rose 9", 3 in 1 crimp bowl-1-1/2" of opal
- \_\_\_\_\_ 206. **P-Dugan Flowers and Frames 8-3/4", 10-ruffle bowl-Tiffany style irid.**
- \_\_\_\_\_ 207. PO-Dugan Flowers and Frames 8-3/4", 10-ruffle bowl
- \_\_\_\_\_ 208. **PO-Dugan Roundup 9", 3 in 1 crimp low bowl-A good one!**
- \_\_\_\_\_ 209. W-Dugan Roundup 9", 10-ruffle bowl-pastels galore
- \_\_\_\_\_ 210. **W-Dugan Roundup 9" plate, slightly turned up and superb**
- \_\_\_\_\_ 211. A-Dugan Fanciful 9", 3 in 1 crimp low bowl-visually pleasing
- \_\_\_\_\_ 212. **W-Dugan Fanciful 8-1/2" plate-dripping with pastel color**
- \_\_\_\_\_ 213. W-Dugan Fanciful 9-1/4", 10-ruffle low bowl-a winner for color
- \_\_\_\_\_ 214. **PO-Dugan Fanciful 8-3/4" plate, slightly turned up, very scarce and nice**
- \_\_\_\_\_ 215. PO-Dugan Soutache 8-3/4", CRE dome base plate-pretty, pretty
- \_\_\_\_\_ 216. **PO-Dugan Soutache 9" dome base plate-smooth edge-not often seen**
- \_\_\_\_\_ 217. Fantastic M-N ruffled Good Luck bowl-Rib ext.-a must have-the best
- \_\_\_\_\_ 218. **Electric B-N ruffled Good Luck bowl-Rib ext.-put on your sunglasses!**
- \_\_\_\_\_ 219. P-N ruffled Good Luck bowl-BW ext.
- \_\_\_\_\_ 220. **G-N ruffled Good Luck bowl-BW ext.-factory flaw on one tip**
- \_\_\_\_\_ 221. Scarce G-N 9" Good Luck plate w/BW ext.-extra nice specimen
- \_\_\_\_\_ 222. **P-N Butterfly bonbon with rare Threaded ext.-fabulous example**
- \_\_\_\_\_ 223. Rare G-N Butterfly bonbon with Threaded ext. light
- \_\_\_\_\_ 224. **G-N Butterfly bonbon-plain ext.-emerald highlights**
- \_\_\_\_\_ 225. G-N Wide Panel Epergne, missing one side lily, chip on base of center lily, but outstanding iridescence on this piece
- \_\_\_\_\_ 226. **Radium M-Fenton Orange Tree 11-1/2" round flared top punch bowl and base-super nice**
- \_\_\_\_\_ 227. Deep M-Imp. 474 Punch bowl, base and 8 cups-very colorful set-great set
- \_\_\_\_\_ 228. **Rare M-Cambridge Inverted Strawberry single candlestick**
- \_\_\_\_\_ 229. M-Imp. Flute and Can 7" candlestick-just one but they rarely come to market
- \_\_\_\_\_ 230. **P-N Grape and Cable candlesticks-well-matched pair**
- \_\_\_\_\_ 231. Colorful M-Imp. Fashion water pitcher
- \_\_\_\_\_ 232. **M-Buzz Saw and File water pitcher-exceptional example**
- \_\_\_\_\_ 233. M-Imp. Crabclaw water pitcher-great undervalued piece
- \_\_\_\_\_ 234. **P-Imp.Grape water pitcher-fantastic electric irid. all the way to the bottom**
- \_\_\_\_\_ 235. P-Imp. Diamond Lace water pitcher-another Imperial beauty
- \_\_\_\_\_ 236. **M-Fenton Magnolia and Drape water pitcher-great eye appeal and detail**
- \_\_\_\_\_ 237. Pumpkin M-Fenton Apple Tree water pitcher-superb
- \_\_\_\_\_ 238. **Frosty W-Fenton Apple Tree water pitcher-pastel irid.**
- \_\_\_\_\_ 239. Extremely Rare G-Fenton Butterfly and Berry water pitcher-super pretty
- \_\_\_\_\_ 240. **P-Imp. Lustre Rose creamer (A) and spooner (B)-Choice-Electric**
- \_\_\_\_\_ 241. G-Cambridge Inverted Feather cracker jar with lid-way above average example
- \_\_\_\_\_ 242. **M-N Springtime complete table set: creamer, spooner, butter dish w/lid and sugar w/lid-outstanding find with excellent color and irid.**
- \_\_\_\_\_ 243. M-Imp. Hobstar complete table set: creamer, spooner, butter dish w/lid and sugar w/lid-beautiful, dark marigold with great iridescence-a great set
- \_\_\_\_\_ 244. **W-Dugan Wreathed Cherry table set with red cherries and gold trim: spooner, creamer, sugar-no lid, butter dish with lid-butter dish marked with D in diamond-great iridescence**
- \_\_\_\_\_ 245. M-N stippled Fruits and Flowers stemmed bonbon-gorgeous
- \_\_\_\_\_ 246. **B-N stippled Fruits and Flowers stemmed bonbon-chip on point, bottom polished**
- \_\_\_\_\_ 247. P-Imp. Scroll Embossed large ruffled compote-Eastern star ext.-electric irid.
- \_\_\_\_\_ 248. **Pastel AO-N ruffled Hearts and Flowers compote-tiny nick on bottom of base-fantastic irid.**
- \_\_\_\_\_ 249. P-N Blossomtime ruffled compote-great example
- \_\_\_\_\_ 250. **Scarce G-N Blossomtime ruffled compote**
- \_\_\_\_\_ 251. M-N Blossomtime ruffled compote-pastel rainbow irid.
- \_\_\_\_\_ 252. **Pumpkin M-N Harvest Poppy ruffled compote-tough piece to find-rare**
- \_\_\_\_\_ 253. P-N Harvest Poppy ruffled compote-minor rim nicks
- \_\_\_\_\_ 254. **G-Mlbg. 9-3/4", 3 in 1 edge Zig Zag bowl-prime example for color and shape**
- \_\_\_\_\_ 255. M-Mlbg. 9-3/4", 6-ruffle Zig Zag bowl-pastel radium finish
- \_\_\_\_\_ 256. **A-Mlbg. 9-3/4", 6-ruffle Zig Zag bowl-extra nice irid.**
- \_\_\_\_\_ 257. M-Mlbg 10", 6-ruffle Holly Whirl bowl-sating blues and pinks
- \_\_\_\_\_ 258. **G-Mlbg. 10", 6-ruffle Holly Whirl bowl-multi color satin irid.**
- \_\_\_\_\_ 259. A-Mlbg. 9-3/4", 6-ruffle Holly Whirl bowl-very pretty example
- \_\_\_\_\_ 260. **Radium G-Mlbg. 9-1/2", 6-ruffle Nesting Swan bowl-sparkling color**
- \_\_\_\_\_ 261. M-Mlbg. 9-1/2", 6-ruffle Nesting Swan bowl-satin beauty-great color
- \_\_\_\_\_ 262. **P-Mlbg. 9-1/2", 6-ruffle Nesting Swan bowl-radium purples and golds**
- \_\_\_\_\_ 263. Pastel Radium M-Mlbg. 10", 6-ruffle Primrose bowl-outstanding
- \_\_\_\_\_ 264. **G-Mlbg. 9-3/4", 6-ruffle Primrose bowl-splendid radium**
- \_\_\_\_\_ 265. P-Mlbg. 9-1/2", 6-ruffle Primrose bowl-super radium finish, one pulled point
- \_\_\_\_\_ 266. **Lav-Mlbg. ruffled Strawberry Wreath compote-Unbelievable radium color!!**



- \_\_\_\_\_ 267. M-Mlbg. ruffled Strawberry Wreath compote-loaded with radium multi-color irid.
- \_\_\_\_\_ 268. **G-Mlbg. ruffled Strawberry Wreath compote-as with the previous two, no need for an upgrade here, it's top notch**
- \_\_\_\_\_ 269. Radium G-Mlbg. 9-1/2", ICS Peacock bowl-fabulous radium rarity-awesome
- \_\_\_\_\_ 270. **G-Mlbg. 8-1/2", deep ICS Strawberry Wreath bowl-full spectrum of radium irid., awesome**
- \_\_\_\_\_ 271. Ice B-N 10", ICS Peacock at Urn bowl-very desirable item
- \_\_\_\_\_ 272. **Ice B-N 5-1/2", ICS Peacock at Urn bowls-Choice A or B**
- \_\_\_\_\_ 273. Ice G-N 9" Peacocks plate-Rib ext.-blue highlights
- \_\_\_\_\_ 274. **Scarce Pastel Ice B-N 9" Peacocks plate-Rib ext.**
- \_\_\_\_\_ 275. Pumpkin M-N 9" Peacocks plate-Rib ext.-superb example
- \_\_\_\_\_ 276. **Scarce B-N 9" stippled Peacocks plate-Rib ext.-rain-bow irid.**
- \_\_\_\_\_ 277. P-N 9" Peacocks plate-Rib ext.-Great eye appeal
- \_\_\_\_\_ 278. **Scarce B-N 9", ruffled Peacocks bowl-Rib ext.-Electric highlights**
- \_\_\_\_\_ 279. Gorgeous Pumpkin M-N 9", ruffled Peacocks bowl-Rib ext.
- \_\_\_\_\_ 280. **P-N PCE Peacocks bowl-Rib ext.-tiny manufacturer's flaw on rim**
- \_\_\_\_\_ 281. Frosty W-N 9", ruffled, stippled, collar base Three Fruits bowl-Rib ext.-seldom offered
- \_\_\_\_\_ 282. **Lav-N 9", ruffled, stippled, collar base Three Fruits bowl-Rib ext.-pretty example**
- \_\_\_\_\_ 283. Rich M-N 9", ruffled, stippled, collar base Three Fruits bowl-Rib ext.-pink, pinks and more pinks
- \_\_\_\_\_ 284. **Scarce Electric B-N 9", ruffled, stippled, collar base Three Fruits bowl-Rib ext.-stunning item**
- \_\_\_\_\_ 285. P-N spat. ftd., ruffled Three Fruits Medallion bowl-electric blues, purples and more
- \_\_\_\_\_ 286. **Pastel AO-N spat. ftd., ruffled, stippled Three Fruits Medallion bowl-loaded with opal**
- \_\_\_\_\_ 287. Pumpkin M-N spat. ftd., ruffled, stippled Three Fruits Medallion bowl-covered in pinks
- \_\_\_\_\_ 288. **P-N 9" stippled Three fruits plate-Rib ext.-multi color irid.**
- \_\_\_\_\_ 289. M-N 9" stippled Three Fruits plate-Rib ext.-light wear on fruits
- \_\_\_\_\_ 290. **Rare B-N 9", ruffled, stippled Strawberry bowl-Rib ext.-electric irid.**
- \_\_\_\_\_ 291. Beautiful M-N 9", ruffled, stippled Strawberry bowl-Rib ext.
- \_\_\_\_\_ 292. **Deep P-N 9", ruffled, stippled, Strawberry bowl-Rib. ext.-classic carnival beauty**
- \_\_\_\_\_ 293. M-N 7-1/2" Wild Strawberry handgrip plate-BW ext.-pinks and greens
- \_\_\_\_\_ 294. **Electric P-N 7-3/4" Wild Strawberry handgrip plate-BW ext.-great find**
- \_\_\_\_\_ 295. G-N 7-3/4" Wild Strawberry handgrip plate-BW ext.-colorful and scarce example
- \_\_\_\_\_ 296. **G-N 9" stippled Grape and Cable Vt. plate-Old Rose Distilling Co. advertising on reverse on marie-tool marks and scuffs on reverse**
- \_\_\_\_\_ 297. Rare P-N 9" stippled Grape and Cable Vt. plate-seldom seen with BW ext. and lots of color-great item
- \_\_\_\_\_ 298. **Lav Smoke-M 8-3/4", ruffled Three Fruits bowl-BW ext.-fabulous pastel irid.-rare pastel**
- \_\_\_\_\_ 299. Awesome Electric P-N 9-1/2", 8-ruffle Stippled Rays bowl-Smooth ext.-rainbow irid.-fabulous too
- \_\_\_\_\_ 300. **P-Dugan 11-1/4", 8-ruffle Farmyard bowl-chip on rim**
- \_\_\_\_\_ 301. Red-Fenton 7-1/2", 8-ruffle Acorn bowl-lovely piece of carnival glass
- \_\_\_\_\_ 302. **Radium Red Amberina-Fenton 6-1/2", round, flared Grape and Cable bowl**
- \_\_\_\_\_ 303. Red-Fenton Blackberry Spray Vt. ruffled hat-has only two sets of berries
- \_\_\_\_\_ 304. **P-Imp. 10-1/4" Homestead Chop Plate, signed Nuart-three holder marks (?) on reverse**
- \_\_\_\_\_ 305. W-Imp. 10-1/4" Chrysanthemum chop plate-superb iridescence, couple minor pinheads on inner rim
- \_\_\_\_\_ 306. **Scarce G-Fenton 9-1/4" Captive Rose plate-ultra fine example, rarely seen this nice**
- \_\_\_\_\_ 307. A-Fenton 8-3/4" Captive Rose deep plate-kind of a different shape
- \_\_\_\_\_ 308. **Fantastic M-Fenton 9-1/2" Captive Rose plate-out-standing color**
- \_\_\_\_\_ 309. Blue-Fenton 9-1/4" Captive Rose plate-delectable palette of colors
- \_\_\_\_\_ 310. **Radium A-Fenton 7-5/8" Vintage Grape plate-Incredible color, small bent over spot on rim, factory made**
- \_\_\_\_\_ 311. Pumpkin M-Fenton 7-3/4" Vintage Grape plate-Top of the line example-radium
- \_\_\_\_\_ 312. **Scarce G-Fenton 7-1/2" Vintage Grape plate-radium jewel**
- \_\_\_\_\_ 313. B-Fenton 7-1/2" Vintage Grape plate-radium
- \_\_\_\_\_ 314. **M-Fenton 7-1/2" Horse Medallion plate-great detail and color-super item**
- \_\_\_\_\_ 315. W-Dugan 7" Question Marks stemmed plate-covered in blues
- \_\_\_\_\_ 316. **P-Dugan 6-1/4", CRE Petal and Fan plate-Jeweled Heart ext.-very nice**
- \_\_\_\_\_ 317. P-Dugan Cherries 6-1/4", CRE plate-Jeweled Heart ext.-tiny open bubble on rim
- \_\_\_\_\_ 318. **P-Dugan 7-1/4" Fishscale and Beads flat plate-knock-out radium electric**
- \_\_\_\_\_ 319. M-Dugan 7-1/4" Fishscale and Beads flat plate-pinks and blues
- \_\_\_\_\_ 320. **W-Dugan 7-1/2" Fishscale and Beads flat plate-radium blues and fuschia**
- \_\_\_\_\_ 321. PO-Dugan 6-1/4" Wishbone and Spades plate-Smooth ext.-1-1/2" of opal
- \_\_\_\_\_ 322. **P-Dugan 6-3/8" Wishbone and Spades plate-BW ext.-multi electric**
- \_\_\_\_\_ 323. PO-Dugan Persian Garden 6-3/4" plate-BW ext.-opal all the way to the base
- \_\_\_\_\_ 324. **W-Dugan Persian Garden 6-3/4" plate-BW ext.-stretchy multi pastel hues**
- \_\_\_\_\_ 325. Dark M-Dugan Grapevine Lattice 7" plate-pinks and blues
- \_\_\_\_\_ 326. **P-N 8-3/4", ruffled Grape and Cable Vt. bowl-Smooth ext.-fantastic irid.**
- \_\_\_\_\_ 327. M-Imp. Twins ruffled fruit bowl, no base
- \_\_\_\_\_ 328. **M-Fenton Orange Tree fruit bowl-Flame missing**

**THE FOLLOWING ITEMS ARE ALL  
CONTEMPORARY PIECES**

- \_\_\_\_\_ 329. P-Daisy and Button toothpick holder
- \_\_\_\_\_ 330. **G-Fenton for Singleton Bailey 12", CRE Good Luck chop plate-limited production**
- \_\_\_\_\_ 331. Red-Fenton for Singleton Bailey 12-1/4", CRE top Heavy Iris whimsey vase-only 76 made
- \_\_\_\_\_ 332. **Electric B-Fenton for Singleton Bailey 12-1/2, CRE top Heavy Iris whimsey vase-around 100 made**



333. Topaz Opal-Fenton for Singleton Bailey 12", CRE top Heavy Iris whimsy vase-only 118 made
334. **B-Fenton for Singleton Bailey 11" Milady vase-a mere 38 made**
335. Plum Opal-Fenton for Singleton Bailey 12-1/2" Poppy vase-only 147 made
336. **Blue Burmese-Fenton for Singleton Baily 12-1/4" Poppy vase-only 167 made**
337. Iridized Burmese-Fenton for Singleton Bailey 13-1/2" JIP (or tulip top) Poppy vase-only 178 made
338. **Cranberry Opal-Fenton for Singleton Bailey 14" JIP (or tulip top) Poppy vase-limited production**
339. P-Westmoreland Checkerboard water pitcher with 4 tumblers
340. **Ice B-L.G. Wright God and Home water pitcher with 4 tumblers**
341. Red-L.G. Wright God and Home water pitcher with 4 tumblers
342. **P-L.G. Wright God and Home water pitcher with 4 tumblers**
343. Lime G-Tiara Flowered Medallion water pitcher
344. **Lime G-Tiara Flowered Medallion 5" tall compote**
345. Lime G-Tiara 6-3/4" tall swan planter
346. **Lime G-Tiara Flowered Medallion goblet**
347. Lav-Westmoreland Thousand Eye mini. 7 pc. water set
348. **Red-Westmoreland 7-1/4" Hobstar and Fine Cut vase #214 out of 1000 (1983)**
349. Rare Sapphire-ACGA 1985 Seacoast cuspidor
350. **G-ACGA 1983 Seacoast cuspidor-stretchy**
351. PO-ACGA 1982 Seacoast cuspidor
352. **Red-ICGA 1982 Frolicking Bears cuspidor**
353. Teal Green -ACGA 1977 In God We Trust cuspidor
354. **Emerald Green Opal-ICGA 1986 Poppy large cuspidor**
355. Ice G-HOACGA 1980 Good Luck hatpin holder
356. **Red-HOACGA 1978 Good Luck Corn vase**
357. M over Custard-HOACGA 1983 Good Luck loving cup
358. **Red-HOACGA 1979 Good Luck loving cup**
359. Lav-HOACGA 1985 Good Luck mug
360. **Yellow Vas-Lincoln Land 1978 dog and cat child's-mug**
361. B-Dorothy Taylor Stag and Holly mini basket
362. **B-ICGA 1984 Inverted Strawberry mini rosebowl**
363. Red-ACGA 1995 Inverted Strawberry candy dish with lid
364. **M-ICGA 1993 Frolicking Bears large tumbler or Texas shot glass**
365. Smoke-Presznick's Carnival Glass Museum eagle mug-1969
366. **Sapphire-Presznick's Carnival Glass Museum eagle mug-1972, signed with stylus "To Eleanor from Rose and Joe"**
367. Cobalt B-Holmes County 1971 Antique Festival tumbler-Millersburg, Ohio
368. **Cobalt B-Grape and Cable Joe St. Clair tumbler**
369. Red-L.G. Wright God and Home tumbler
370. **Radium Amberina-Fenton Fruits and Flowers stemmed bonbon**
371. Radium P-Fenton Fruits and Flowers stemmed bonbon
372. **M-HOACGA 1988 Good Luck bell-no clapper**
373. B-HOACGA 1987 Good Luck bell
374. **Lime G-HOACGA 1986 Good Luck bell-no clapper**
375. Sapphire-HOACGA 1989 Good Luck bell-no clapper
376. **Sapphire-HOACGA 1989 Hobnail cuspidor-room display piece**
377. Light Teal-HOACGA 1992 Hobnail cuspidor-room display piece
378. **Celeste Stretch-HOACGA 1995 Hobnail cuspidor-room display piece**
379. Amber-ACGA 1971 Beaded Shell In God We Trust mug
380. **Emerald G-ICGA 1992 9", 3 in 1 edge Lions cake plate**

## **SPECIAL NOTE:**

### **NO SUNDAY CALLS, PLEASE!**

Winning Absentee Bidders will be contacted Monday through Wednesday of the week following the Auction!

Thank You!

## **NOTE: NEW ADDRESS**


For Free Color Catalogs & Information Write:

Mickey Reichel

18350 Hunters Ridge Ct., Boonville, MO 65233-2971

or Call: 660-882-5292 days or

660-882-5283 evenings

 E-mail: mreichel@undata.com

**NEED QUALITY CARNIVAL GLASS & ANTIQUES**

*"We don't want all the Business,  
Just Yours."*

**WE DO AUCTIONS RIGHT!!**

## **2004 CALENDAR**

**July 10, 2004**

**4TH ANNUAL EXTRAVAGANZA ANTIQUE AUCTION**  
at Boonville

**August 7, 2004**

**CARNIVAL GLASS AUCTION at Boonville**

**September 18, 2004**

**IMPORTANT EASTERN OHIO COLLECTION OF  
HIGH QUALITY CARNIVAL GLASS  
Held in St. Louis, MO, at Wentzville,  
A Suburb West of St. Louis**

**Special Room Rate Cut-Off 8-17-04 (636) 327-7001**

**October 16, 2004**

**AIR CAPITAL CARNIVAL GLASS CONVENTION**  
at Wichita Kansas

**November 13, 2004**

**CARNIVAL GLASS AUCTION at Boonville**

**January 8, 2005**

**14TH ANNUAL NEW YEAR'S EXTRAVAGANZA**

