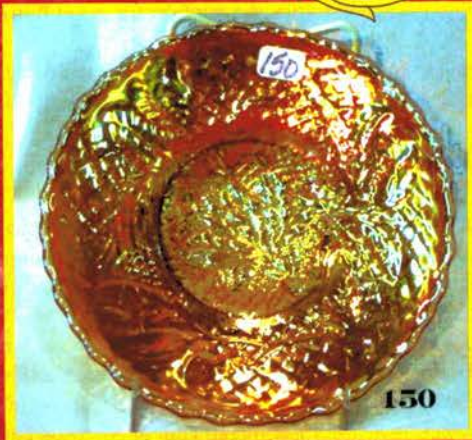


6th Annual Memorial Weekend Auction

Featuring:

Carnival Glass – R.S. Prussia – Depression Glass – Victorian Opalescent Glass
Banks – Indian Artifacts – Furniture – Slot & Trade Stimulator Machines
Czech Pottery – Antique Glass / China & More!!!



Thursday – May 27, 2004
Friday – May 28, 2004
Saturday – May 29, 2004

Midwest Auctioneers & Realty, Inc.
Jim Wroda Auction Services
5239 St. Rt. 49 South, Greenville, OH 45331

Memorial Weekend 6th Annual Antiques Auction

May 27th - 28th and 29th 2004

Preview May 25th - 26th - 27th from 10am to 4pm

Midwest Auction Facility

5239 St. Rt. 49 South Greenville Ohio 45331

937-548-2640 or email at midwestauctions@earthlink.com

Directions: From I-70 westbound take the RT. 49 exit north to Greenville. Go approx 25 miles North to Greenville and the auction facility will be on your right as you enter Greenville on the corner of RT 127 and RT 49. From I-70 east bound: take the Rt. 127 exit north approx 20 miles and take the RT 49 exit. Turn left and the Auction Facility will be on your right.

Well it's time for our 6th annual antiques auction on the Memorial Weekend. This year we will start off a little different with an auction on Thursday night under tent. We have a great line up in store for you this year. You will definitely want to make plans to attend this fantastic weekend of quality antiques. Once again we will be having our Hog roast and Chicken BBQ after the auctions on Friday for all auction attendees on Friday and those who plan on attending Saturday. Our compliments to you, for spending the weekend with us. Plan on staying after the auction for good homemade food and visiting with old and new friends! **Now..... Here's the line up!**

Thursday May 27th at 4:00PM under the Big top!> 1000's of pieces of glass, china, toys and lots more sold in large lots to include carnival glass, contemporary carnival glass, Fenton, asst'd glass, flatware, Pyrex, picture frames, dolls, Northwood, Czech, and lot's more. Very very large quantity of merchandise!

*******FRIDAY MAY 28th 10:30 AM DOORS OPEN AT 8:30AM*******

Friday May 28th at 10:30 AM: Ring One> Over 1000 pieces of glass, china, toys, clocks, coins and lamps to include over 300 pieces of Czech pottery, Czech vintage perfumes, Art glass, RS Prussia, Nippon, Great selection of Victorian clocks, Fostoria, cut glass pieces, hand painted lamp, slag lamps, Heisey custard wing scroll tankard and several other great pieces of Heisey, over 100 pieces of Fenton and Contemporary carnival, hand painted china, Several nice Loetz pieces, Wave crest boxes, Bohemian glass, Belle ware, Paden city, Cambridge, Baccarat vinegar, Imperial slag cruet, Royal Dux, Wedgewood, Cranberry opal, Sterling silver, Cruets, Several pieces of Royal Bayreuth including figural girl milk pitchers, carnival glass, Limoges, Flow blue plates, Large hand painted tankard, **Several 10 & 15 cent comic books in very good condition, approx. 200 coins to include: good Morgan & Peace dollars, Walking Liberty & Franklin half dollars and other gold and silver coins**, Marble clocks, Brass figural clocks, Heidelberg Sterling Coffee-Teapot- Cr/Su-waste jar RARE!, Tiffany powder jar, Villroy & Bach large covered tureen w/ Gnome scene NICE!, Beswick fish, 1938 RR menu, Hall & Simpson Coffee service, Baccarat perfume, Royal Vienna plate, Armand Marseille doll, Royal Lace cobalt bowl, Franciscan platter, Large quantity of good costume jewelry, Canes, Royal Bayreuth, Pottery, Art pottery and more!

Friday May 28th at 11:00 AM: Ring Two> Over 5000 pieces of depression glass (list available) This will feature the collection of Sue Netzley. Just a beautiful collection! Patterns to include: large qty. cobalt Royal Lace, Flora gold, Hobnail, Queen Mary, Cubist, Twin Winton, Rose cameo, Georgian, Bow Knot, Duncan, Golden Glory, S Pattern Stippled Rose Band, Ring, Starlight, Sunburst, Waterford, Block Optic, Patrician, Windsor Diamond, Anniversary, Cambridge, Cameo, Daisy, Emerald Glo, Heritage, Jubilee, Modern tone, Normandy, Old colony, Pineapple and Floral, Princess, Sunburst, Stars and Bars, and more! Colors include Cobalt- pink- yellow- crystal - pink - green- opaque pink- amber and others. Some high lights include, Approx 80 pieces of Cobalt Royal Lace, Lots of cobalt Modern Tone including several hard to find pieces, Over 100 pieces of Pink Old Colony(Lace edge) including candleholders, juice tumblers, tumblers etc. over 120 pieces of Green Patrician to include RARE Cookie jar!, Butter, shakers, sugar lid, Water Pitcher and more. Over 100 pieces of Princess yellow incl. sandwich plate, pitcher, shakers, salad, etc. Way too much to list here. **call, email, or print complete list from website!!**

Friday May 28th at 11:00 AM: Ring Three> 1000's of Collectibles to include: Outstanding collection of Larry Cyrus, including over 200 Indian Artifacts (NO REPRO'S) all found in the Columbus Ohio Area. large quantity of postcards, over 200 Car banks of various advertising including Coca Cola-John Deere- Ace - Budweiser- etc. Over 1000 Baseball and Football cards. Some to be sold individually and in books. Signed Baseballs, and other memorabilia, Collector dolls, Collector Plates, advertising tins old and newer, Beam Bottles, and more! **Complete list & Pictures available on website or call.**

Friday May 28th at 11:00 AM: Ring Four> over 125 pieces of nice furniture, Slot machines and Trade stimulators to include: Very RARE Jennings Sportsman golf ball 25 cent slot machine, Jennings club Chief Chinese front light up \$1 Slot, Mills War Eagle 50 cent slot, Watling Bros. Baby Bell gumball w/ gold award 1 cent, Kicker and Catcher 1 cent, Grotchen 5 cent gum ball, Pok-O-Reel gum ball 1 cent, Ball Gum 1 cent, Grotchen marble machine, Jennings target 1 cent, Jennings Penny Play, Grotchen Mercury, ABT Challenger Target 1 cent, Daval 1 cent 21 machine, Centasmoke 1 cent gum ball, 1 cent gum ball w/cigarette reels, Grotchen Mercury deluxe 1 cent, Superior 1 cent gumball, Buddy 1 cent gumball, all in working order! Super selection!! large ornate Burle wood bed, Oak bed, Iron Bed, Nice Oak Stacking bookcases, Parlor tables, Marble top table, Dressers, washstands, oak curved front china, Dining tables, chairs, rocking chairs, Super marble top buffet, showcases, Victrola w/stand, Night tables, and more fine furniture. Too much to list! See website for several pictures!!

**FRIDAY 4:00PM TO 8:00PM - HOG ROAST AND CHICKEN BBQ W/ HOMEMADE
POTATO SALAD AND PIES ALONG WITH YOUR BEVERAGES!
PREVIEW FOR SATURDAY MAY 29th WILL BE FRIDAY 5:00PM TO 8:00PM**

*****SATURDAY MAY 29TH 10:00 AM DOORS OPEN AT 8:30AM*****

Saturday May 29th at 9:45AM : Ring One Will feature the great **Carnival glass** collections of Brenda Finfgeld, Columbus Ohio, and Eldon Bicksler, Wadsworth Ohio. Brenda has been collecting for approx. 20 years with good color and condition in mind and it shows! Eldon... well what can you say about Eldon?!! Eldon has been in this hobby for more years than he can remember. Probably back to the '50's! He has seen it all as they say. This is a chance to buy from one of the early pioneers of this hobby. His glass is just wonderful! This auction will include a fantastic 6" plate collection and candlestick collection along with several rare and hard to find items. Also included will be lot's of rare stretch glass including a red punch bowl and base! There are over 600 items in 400 lots!

There is a complete listing in the brochure Take a look and we'll see you there!!

Saturday May 29th at 10:00AM: Ring 2 Over 300 pieces of nice RS Prussia, Royal Bayreuth and related china.

This is the remainder of the Elliott collection with others added. Items to include Seasonal, cobalt blue, portrait pieces, Melon Boys items, super floral pieces, and more. Shapes to include vases, bowls, plates, tankards, ewers, chocolate pots, cream & sugar sets, demitasse pots, and more!!

There is a complete listing in the brochure.

Saturday May 29th at 10:00AM: Ring 3 Over 350 pieces of Super Victorian opalescent glass! This glass is from the private collection of Mr. Dan Whatley of Austin, Texas. This will be some of the best Opalescent glass we have sold not to mention some of the best to sell in this area in years! Many rare and hard to find items including 80+ water pitchers!

There is a complete listing in the catalog and pictures.

<<<PLEASE READ THE TERMS AND CONDITIONS OF THE AUCTION BEFORE BIDDING>>>

<<<PLEASE USE PREVIEW TIMES TO VIEW YOUR ITEMS OF INTEREST>>>

*******Mail, E-mail, Phone, and Absentee Bids Policy:*******

1. Phone inquiries on items of interest are welcome! 937-548-2640 Or visit website at www.jimwrodauction.com
2. Bidders take full responsibility to honor any and all bids that are executed in your behalf.
3. All items to be paid for within 7 days of notification unless other arrangements are made prior to auction. Successful absentee bidders must also pay estimated shipping costs.
4. All items bid competitively against the audience. **We do not start with your bid.**
5. For Carnival Glass: items will be bid on in **perfect condition** with average to above average iridescence unless otherwise stated or noted on your order of sale list or absentee bid sheet. **We will describe each item as accurately as possible!! (see listing) Bids will not be carried out if a damage is found during auction.** If manufacture problems bother you such as air bubbles, pulled points, soda ash, tool marks, or any other manufacturing flaw, please be specific in your mail bids or email bids. **If there is a manufacture flaw on an item that we feel is truly distracting, we have noted that in the listing already. Auction Company has the right NOT to execute an absentee bid for any reason.**
6. All bids can be called in to: (937) 548-2640, faxed to 937-548-3492 or sent to 5239 St. Rt. 49 South, Greenville, OH 45331. You can also e-mail bids and ask questions directly from our website (Please Ask!)
7. **All LIVE Phone bids due by FRIDAY MAY 21st, 5:00 pm.**
8. **All ABSENTEE AND LEFT bids due by WEDNESDAY MAY 26th, 2004, 12:00pm.**
9. If someone in the audience is bidding for you, they must pay for the item(s) before leaving.

*****Visit our website to view hundreds of pictures of this auction*****

www.jimwrodauction.com or www.midwest-auctioneers.com

Terms and Conditions of Auction: Cash, Travelers checks, business or personal checks with proper I.D. We now have Visa, M/C and Discover available with a 3% clerk fee. All items being sold "AS IS" with NO MINIMUM & NO RESERVE! *Everything sells to highest bidder.* Announcements made day of sale take precedence over printed information.

Local Hotel Information: Holiday Inn Express-Greenville - 937-548-1328 (special rate if you mention "Midwest Auctioneers" if you call before May 20th). Other hotels: Comfort Inn: 937-316-5252 and Greenville Inn: 937-548-3613.

Guest Auctioneers
Mr. David Jones
Mr. H. John Kramer
Mr. Brad Hess
Mr. Mike Dare

MIDWEST AUCTIONEERS & REALTY, INC.

Jim Wroda Auction Services

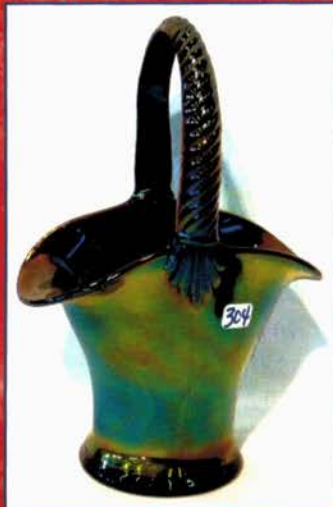
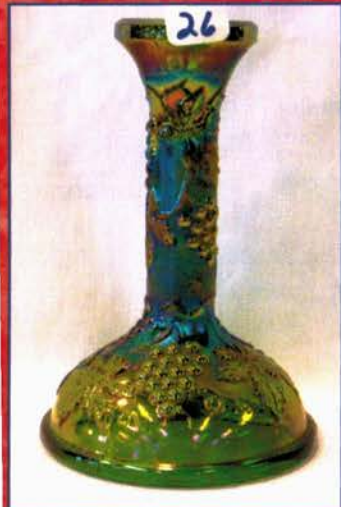
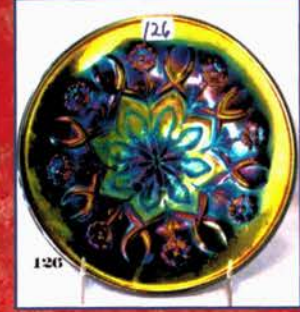
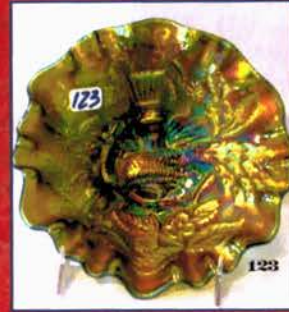
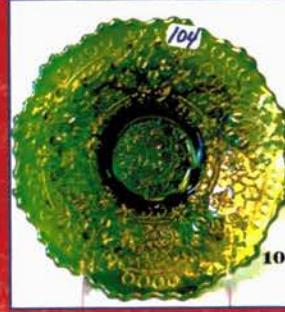
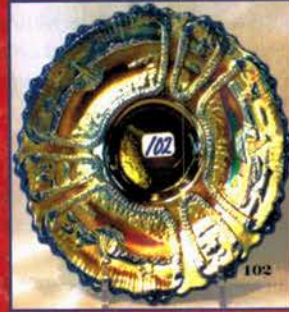
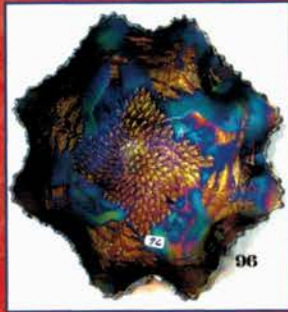
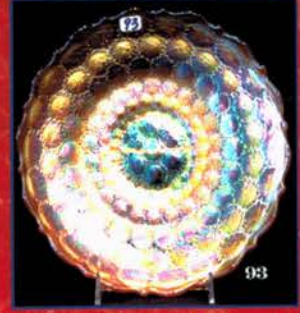
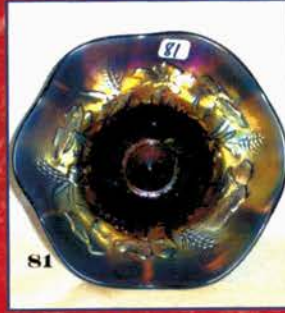
Jim Wroda and Mike Baker - Auctioneers • Chuck Litteral - Apprentice Auctioneer
5239 St. Rt. 49 South, Greenville, OH 45331 937-548-2640

Please email questions or bids to: jwrodamidwest@earthlink.net or midwest-auctioneers.com

Security personnel and Security Cameras in use at all times!

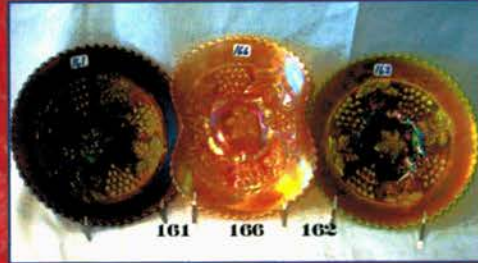
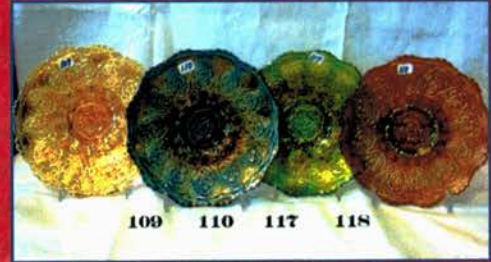
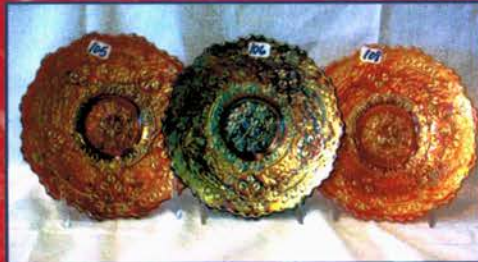
**Owners: Marilyn Robbins, Greenville- Larry Cyrus, Columbus Ohio-Dan Whatley, Texas -
Sue Netzley New Lebanon Ohio- John Nicholson, Long Island NY- Barbara Elliott, Zanesville -
The Hrbek Family, Ocala Florida and others**





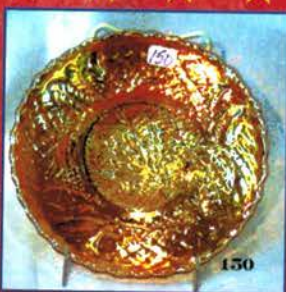
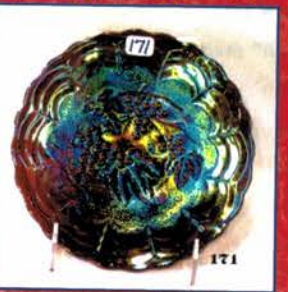
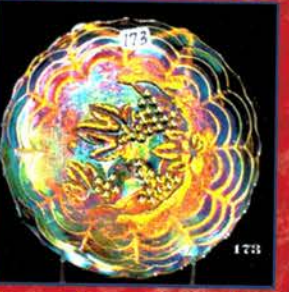
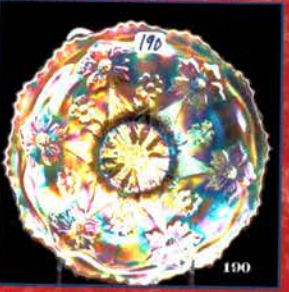
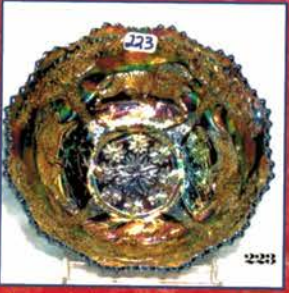
LISTINGS FOR CARNIVAL - SATURDAY

- 175 1. N-9" elec. purple G & C plate W/plain back.
195 2. F- 9" blue Holly plate. Nice
185 3. F- 9" mari. Holly plate
375 4. F- 9" blue Peacock & Grape plate. Nice!
55 5. F- mari. 7 pc. Butterfly & Berry - berry set.
90 6. F- blue Butterfly & Berry master berry bowl.
250 7. D- 9" purple Round Up plate.
275 8. D- 9" blue Fanciful plate. Scarce!
95 9. D- 8" purple Fanciful bowl.
425 10. N- purple 7 pc. G & C water set. Very pretty water set!
700 11. N- 9" green Good Luck plate w/BW back.
825 12. N- 9" elec. purple Good Luck plate w/BW back.
200 13. N- 9" green Good Luck PCE bowl w/BW back. Nice!
600 14. N- 9" elec. blue Good Luke PCE bowl w/ribbed back.
235 15. N- 9" mari. Peacocks plate.
115 16. N- blue Ground Cherries water pitcher. Nice. *Cherries & Little Flowers*
85 17. (3) N- blue Ground Cherries tumblers. (one money)
175 18. Cam. Purple Inverted Feather spooner. Scarce.
350 19. (2) Dugan purple Beaded Shell mugs. Choice.
65 20. N- elec. purple Singing Birds mug.
20 21. F- blue Orange Tree mug. Nice!
10 22. F- mari. Orange Tree shaving mug.
10 23. F- mari. Orange Tree mug.
15 24. D- mari. Stork & Rushes banded mug
75 25. N- blue Round Bushel Basket.
200 26. N- emerald Green G & C candlestick. Super!
20 27. F- 5" Water Lily footed sauce *M.*
30 28. Imperial mari. Fashion water pitcher.
115 29. F- 9" blue Dragon & Lotus 8-ruffle bowl.
275 30. N- blue Double Loop chalice. Super!
350 31. F- blue Butterflies 2-handled bon bon.
25 32. F- 8 1/2" mari. Dragon & Lotus ICS bowl.
25 33. F- 8 1/2" elec. blue Holly ruffled bowl. Chip on base.
35 34. F-. mari. Two Flowers footed rosebowl.
175 35. F- 9" green Ten Mums 3-1 edge bowl.
75 36. F- 8 1/2" blue Orange Tree 8-ruffle bowl.
105 37. M- 9 1/2" purple Whirling Leaves bowl. Couple chips *Holly Whirl*
125 38. M- 10" mari. Country Kitchen ruffled bowl.
85 39. F- 9" blue Chrysanthemum deep footed bowl
40 40. F- 9" mari. Chrysanthemum deep footed bowl.
25 41. (4) Imp. Mari. Octagon wines
55 42. Imp. Mari. 5-pc. Grape wine set.
75 43. U.S. Glass mari. Curved Star Chalice.
25 44. Imp. Heavy Grape purple handled nappy.
45 45. (6) Imp. Grape 5" bowls, smoke
85 46. Imp. 8 1/2" elec. purple Scroll Embossed ruffled bowl.
70 47. Imp. 8" purple Scroll Embossed ruffled bowl w/File ext.
25 48. Imp. Grape ruffled bowl, green.
- 177/2 49. Imp. Mari. Poinsettia milk pitcher
40 50. Imp. Mari. Columbia vase.
650 50A. N - mari. Peacock at the Fountain 8 pc. punch set. Pretty! Getting hard to find a good one!
20 51. Imp. Heavy Grape 9" mari. master berry.
275, 100 52. (2) Imp. Heavy Grape elec. purple plates. Choice.
55 53. N- green Raspberry footed candy dish. Scarce.
120 54. F- mari. Four Kittens toothpick. Nice!
65 55. N-7" purple Star of David & Bows 8-ruffle bowl.
55 56. N- 8" purple Star of David & Bows 8-ruffle bowl.
55 57. N- 8 1/2" purple Star of David & Bows 8-ruffle bowl.
155 58. F- 8" green Two Flowers footed bowl.
65 59. F- 8" green Ribbon Tie bowl.
45 60. F- 8 1/2" mari. Ribbon Tie 3-1 edge bowl.
50 61. West. Purple Louisa rosebowl. *8 1/2"*
75 61A. F - 5" aqua 2-Flowers footed sauce.
60 61B. F - 5" mari. Little Fishes footed sauce.
75 62. West. Amber Louisa rosebowl.
50 63. West. Teal Louisa rosebowl.
225 64. N- elec. blue Beaded Cable rosebowl. Gorgeous
1400 65. N- GREEN LEAF & BEADS SMOOTH TOP ROSEBOWL W/SUNFLOWER INT. EXTREMELY RARE!
900 66. N- BLUE G & C STIPPLED COVERED POWDER JAR. VERY RARE! COUPLE NO HARM NIPS.
200 67. N- green G & C covered powder jar.
145 68. N- purple G & C covered powder jar.
375 69. F- purple Orange Tree covered powder jar.
105 70. F- blue Orange Tree covered powder jar.
35 71. F- mari. Orange Tree covered powder jar.*
185 72. Cam. Green Inverted Strawberry covered powder jar.
150 73. Cam. Mari. Inverted Strawberry covered powder jar.
450 74. N- light amy. G & C cologne bottle.
550 75. N- radium mari. Banded G & C cologne bottle. Super blue irid.!!! Wow!
850 76. N- LAVENDER G & C HATPIN HOLDER. EXTREMELY RARE AND BEAUTIFUL!!!
525 77. N- GREEN/EMERALD GREEN G & C HATPIN HOLDER. VERY NICE & RARE!
225 78. N- purple G & C hatpin holder.
160 79. N- dark mari. G & C hatpin holder. Super!
300 79A. F- elec. blue Orange Tree hatpin holder. Super!
700 80. N- AO (ALMOST SAPPHIRE OPAL) HEARTS & FLOWERS COMPOTE. VERY RARE ODD COLOR!
725 81. N- ~~elec.~~ BLUE HARVEST POPPY COMPOTE. EXTREMELY RARE! Super!
105 82. N- mari. Harvest Poppy compote.
175 83. N- green Blossom Time compote. Rare!
250 84. N- purple Blossom Time compote.
155 85. N- pumpkin mari. Blossom Time compote.



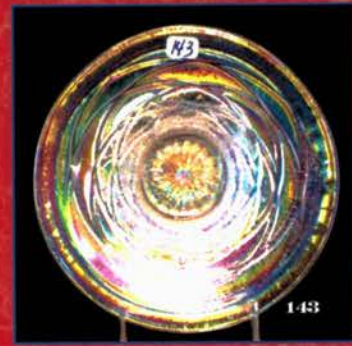
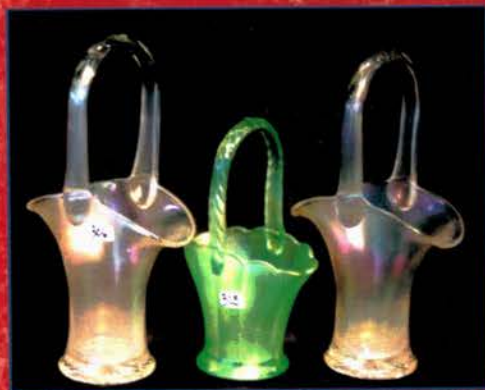
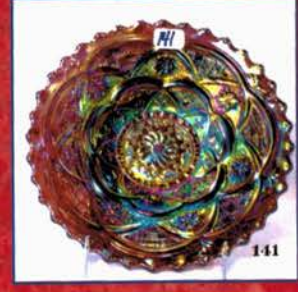
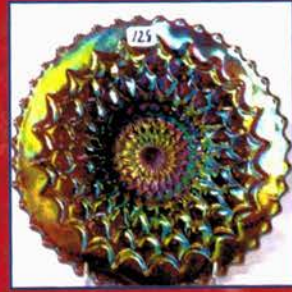
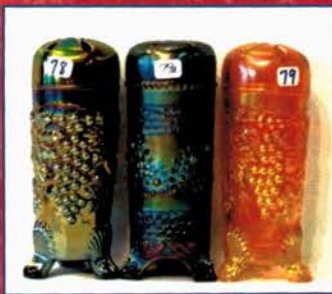
LISTINGS FOR CARNIVAL - SATURDAY

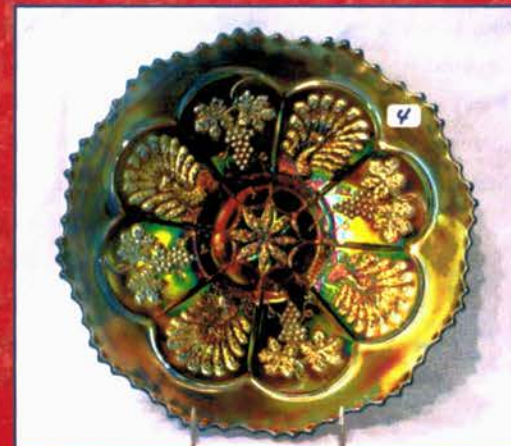
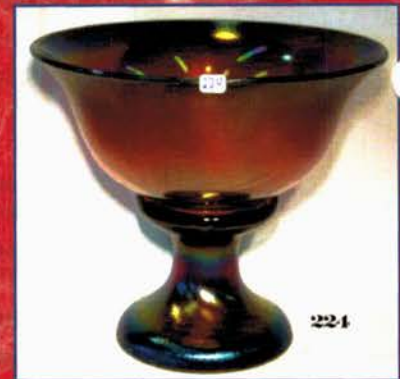
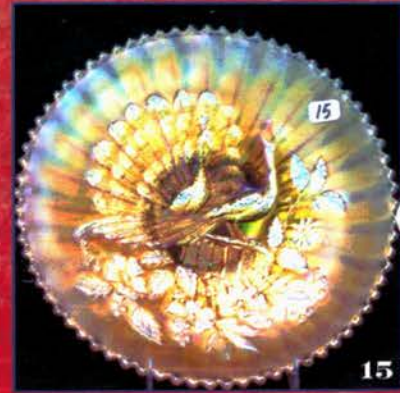
- 2500 86. IMP. AMBER SIX SIDED CANDLESTICKS. EXTREMELY RARE. THE ONLY SET I KNOW OF. SUPER IRID.
- 1800 87. Imp. Green Six Sided candlesticks. Rare color.
- 600 88. Imp. Dark mari. Six Sided candlesticks.
- 400 89. Imp. elec. purple Six Sided candlestick (1 only)
- 25 90. Imp? crystal Six Sided candlesticks.
- 25 91. Imp. mari. Premium candlesticks. Super color!
- 460 92. N- 8 1/2" IB Nippon PCE bowl. Absolutely beautiful!
- 1000 93. F- 9" MARI. FEATHER STITCH PLATE. EXTREMELY RARE W/SUPER COLOR!
- 200 94. F- 9" mari. Plaid plate. Very rare!
- 175 95. D- 8" PO Round Up plate.
- 550 96. F- 10" KILLER ELEC. BLUE STAG & HOLLY FOOTED BOWL. A SCREAMER!!!!
- 65 97. F- 10" mari. Stag & Holly footed ICS bowl
- 120 98. F- 9" purple Ribbon Tie 3-1 edge low bowl/plate-Rare!
- 225 99. F- 9" blue Ribbon Tie 3-1 edge low bowl/plate-Rare!
- 105 100. F- 9" mari. Ribbon Tie 3-1 edge low bowl/plate. Rare!
- 325 101. F- blue miniature Blackberry stemmed flat plate. Extremely rare! Nice color!
- 375 102. F- 6" blue Sailboats flat plate. Rare!
- 300 103. F- 6" pumpkin mari. Sailboats flat plate. Very Nice!
- 1700 104. F- 6" EMERALD GREEN CHERRY CHAIN PLATE. VERY VERY RARE! SUPER COLOR!!!!
- 525 105. F- 6" purple Cherry Chain plate. Very scarce!
- 100 106. F- 6" blue Cherry Chain plate. Scarce!
- 125 107. F- 6" frosty white Cherry Chain plate. Scarce!
- 105 108. F- 6" mari. Cherry Chain plate.
- 125 109. F- 7" mari. Persian Medallion plate. Nice!
- 135 110. F- 7" blue Persian Medallion plate.
- 550 111. F- 6" green Persian Medallion plate. Super blue irid.!
- 185 112. F- 6" PURPLE PERSIAN MEDALLION PLATE. VERY RARE!
- 1050 113. F- 6" ELEC. PURPLE PERSIAN MEDALLION PLATE. SUPER COLOR!!
- 155 114. F- 6" blue Persian Medallion plate.
- 225 115. F- 6" BLUE PERSIAN MEDALLION PLATE W/ORANGE TREE EXT. VERY SCARCE!
- 135 116. F- 6" mari. Persian Medallion plate.
- 325 117. F- 7" GREEN PERSIAN MEDALLION PLATE. RARE COLOR!
- 150 118. F- 7" purple Persian Medallion plate.
- 250 119. F- 6" BLACK AMY PERSIAN MEDALLION PLATE. VERY RARE COLOR!
- 2000 120. M- 6" MARI. PEACOCK AT URN FLAT PLATE. VERY RARE. RADIUM
- 1400 121. M- 6" PURPLE PEACOCK AT URN FLAT PLATE. RARE. SUPER RADIUM IRID.
- 2700 122. M- 6" PURPLE BLACKBERRY WREATH FLAT PLATE. SUPER RADIUM IRID.
- 1100 123. M- 6" green Peacock at Urn 3-1 edge bowl. Rare!
- 150 124. M- 6" radium purple Peacock at urn 3-1 edge bowl.
- 325 125. D- 6" PO GARDEN PATH PLATE. VERY RARE!
- 750 126. D- 6" ELEC. PURPLE WISHBONE & SPADES PLATE. THE ABSOLUTE BEST!!!
- 135 127. D- 6" PO Wishbone & Spades plate. Super.
- 425 128. D- 7" elec. purple Fishscale & Beads flat plate.
- 195 129. D- 7" mari. Fishscale & Beads "Souvenir of Hershey" flat plate.
- 450 130. D- 6" elec. purple Grapevine Lattice beautiful plate.
- 150 131. D- 6" mari. Grapevine Lattice beautiful plate.
- 160 132. D- 6" frosty white Grapevine Lattice beautiful plate.
- 450 133. D- 6" ELEC. PURPLE FOUR FLOWERS FLAT PLATE W/PLAIN BACK. RARE!
- 100 134. D- 6" PO FOUR FLOWERS FLAT PLATE W/BW BACK. OPAL ALL THE WAY TO COLLAR BASE. SUPER!!!
- 250 135. D- 6" elec. purple Petal & Fan CRE plate. Killer!
- 90 136. D- 6" purple Jeweled Heart CRE plate.
- 85 137. D- 6" PO Jeweled Heart CRE plate.
- 510 138. D- 6" elec. purple Cherries CRE plate. Super!
- 60 139. D- 6" purple Cherries low ruffled bowl.
- 40 140. D- 6" PO Cherries low ruffled bowl.
- 750 141. D- 6" elec. lavender Persian Garden plate. What a beauty! Rare color!
- 85 142. D- 6" white Pool of Pearls plate. Very scarce!
- 110 142A. D- 6" white Persian Garden plate. Beautiful Irid!!
- 400 143. D- 6" FROSTY WHITE VINING TWIGS FLAT PLAT. EXTREMELY RARE!!! SUPER IRID!!!!
- 35 144. D- 6" purple Flower & Beads plate.
- 400 145. D- 6" mari. Persian Garden plate.
- 400 146. D- 6" elec. purple Question Marks stemmed plate.
- 200 147. D- 6" frosty white Question Marks stemmed plate.
- 130 148. D- 6" mari. Question Marks stemmed plate.
- 160 149. D- 7" PO Honeycomb CRE plate.
- 1900 150. D- 6" DARK MARI. "JUANITA" FLAT PLATE W/BW EXTERIOR. NAMED AFTER ELDON'S WIFE. DEFINITELY A DUGAN PATTERN. EXTREMELY RARE & BEAUTIFUL!
- 375 151. M- 7" green Hanging Cherries plate/flared low bowl.
- 90 152. M- 7" mari. Hanging Cherries plate/flared low bowl.
- 1350 153. N- 6" ELEC. PURPLE PEACOCK AT URN PLATE. A SCREAMER!!!
- 800 154. (2) N- mari. Peacock at Urn plates. Choice.
- 175 155. N- 6" IG G & C plate/low bowl. Very Rare!
- 185 156. N- 6" green G & C plate w/BW back. Super!
- 140 157. N- 6" emerald green G & C hand grip plate. Super!
- 250 158. N- 6" HOREHOUND G & C HAND GRIP PLATE. VERY SCARCE!
- 70 159. N- 6" purple G & C 2-sides up plate.
- 70 160. N- 6" mari. G & C 2-sides up plate.
- 100 161. N- 7" purple G & C plate w/BW back.
- 135 162. N- 7" green G & C plate w/BW back.
- 120 163. N- 7" green G & C hand grip plate. Scarce.



LISTINGS FOR CARNIVAL - SATURDAY

- 125 164. N- 7" purple G & C hand grip plate. Scarce. 75 208. F- 7" mari. Leaf Chain plate.
50 165. N- 7" mari. G & C hand grip plate. Scarce. 150 209. N- 7" green Fruits & Flowers plate.
80 166. N- 7" mari. G & C 2-sides up plate. 165 210. N- 7" elec. purple Fruits & Flowers plate. Killer!
475 167. N- 6" purple Wild Strawberry hand grip plate. 120 211. N- 7" mari. Fruit & Flowers plate.
130 168. N- 7" green Wild Strawberry hand grip plate. 190 212. N- 7" mari. Fruit & Flowers 2-sides up plate.
125 169. N- 7" pumpkin mari. Wild Strawberry hand grip plate. 85 213. N- 7" purple Fruit & Flowers 2-sides up plate.
350 170. N- 7" radium elec. pur Wild Strawberry hand grip plate. 85 214. N- 7" green Fruit & Flowers hand grip plate.
400 171. Imp. 6" killer elec. purple Grape plate. Beautiful! 65 215. D- 8" white Lattice and Points vase.
100 172. Imp. 6" green Grape plate. 55 216. N- 10" green Thin Rib vase. Super blue irid.
200 173. Imp. 6" amber Grape plate. Nice blue irid. Very Scarce! 1000 217. D- 2 1/2" PO STIPPLED ESTATE TRI-CORNER
30 174. Imp. 6" mari. Grape plate. Pretty! MINIATURE VASE. EXTREMELY RARE!!
125 175. Imp. 7" smoke Frosted Block plate. 55 218. Imp. smoke Rococo candy dish.
35 176. Imp. 7" smoke Star Spray plate. 135 219. Imp. smoke Rococo vase.
30 177. Imp. 7" dark mari. Three in One plate. 145 220. Imp. mari. Rococo vase.
150 178. Imp. 8" elec. purple Grape plate. 80 221. D- PO Question Marks CRE plate.
50 179. Imp. 8" green Grape plate. 65 222. F- 6" purple Peacock Tail tri-corner dish.
30 180. Imp 8" mari. Grape plate. 350 223. F- 6" radium blue Lions deep round bowl. Very Scarce!
225 181. F- 6" green Vintage plate. Very scarce. 4200 224. F- RED STRETCH ROUND PUNCH BOWL AND
100 182. F- 6" purple Vintage plate. Scarce! BASE. EXTREMELY RARE! Nice!
160 183. F- 6" mari. Vintage plate. Hard to find! 1100 225. F- 10" RED STRETCH FOOTED FRUIT BOWL.
135 184. F- 7" green Vintage plate. IRID. INTERIOR ONLY. RARE
300 185. F- 7" blue Vintage plate. 350 226. Imp. red Stretch Double Scroll centerpiece bowl.
135 186. F- 7" purple Vintage plate. 300 227. Imp. red Stretch Double Scroll candlesticks.
90 187. F- 7" mari. Vintage plate. 135 228. Imp. 6" red Stretch Wide Panel plate.
400 188. F- 6" BLUE PEACOCK TAIL FLAT PLATE. VERY 125 229. Imp. 9" red Stretch Wide Panel bowl w/turn down edge.
RARE! IRID. ON BACK ONLY. 725 230. Red Stretch Chesterfield candlesticks. Very scarce!
500 189. F- 6" PUMPKIN MARI. PEACOCK TAIL FLAT 250 231. F- 10" celeste blue Stretch footed fruit bowl.
PLATE. VERY RARE!
100 190. F- 6" MARI ^{little} TWO-FLOWERS PLATE. 75 232. F- 10" celeste blue Stretch centerpiece bowl.
EXTREMELY RARE!
100 191. F- 6" purple Stippled Rays stemmed plate. 25 233. Celeste blue Stretch covered compote.
40 192. F- 6" mari. Stippled Rays stemmed plate. 200 234. Celeste blue Stretch perfume bottle
900 193. F- 7" mari. Lions plate. Super color & pressing. 175 235. F- pink Stretch Diving Dolphins 2-sides up compote.
Very Scarce!
160 194. F- 7" mari. Horse Head Medallion plate. Scarce! 125 236. F- pink Stretch Diving Dolphins fan vase
175 195. F- 6" green Pinecone fluted edge plate. Scarce! 275 237. F- tangerine Stretch Diving Dolphins round compote.
130 196. F- 6" purple Pinecone fluted edge plate. Scarce! 75 238. Tangerine Stretch ruffled compote.
110 197. F- 6" blue Pinecone fluted edge plate. 25 239. Tangerine Stretch 12" Wide Panel flared console bowl.
135 198. F- 6" mari. Pinecone fluted edge plate. Chip on base.
325 199. F- 6" green Pinecone round plate. Very Scarce! 35 240. N- Persian blue 10" Stretch plate.
250 200. F- 6" purple Pinecone round plate. Very Scarce! 65 241. N- Persian blue candlesticks (#657).
300 201. F- 6" blue Pinecone round plate. Scarce! 125 242. Imp. smoke Stretch single candlestick w/serving tray.
260 202. F- 6" mari. Pinecone round plate. Scarce! 75 243. Imp. 9" white Stretch Wide Panel bowl.
500 203. F- 7" DARK PUMPKIN MARI. PINECONE PLATE. 30 244. Imp. smoke Double Scroll console bowl.
THIS IS AN OUTSTANDING PLATE. 50 245. F- 12" celeste blue open edge bowl.
350 204. F- 7" purple Pinecone plate. Scarce! 55 246. Vaseline Stretch 9" plate.
150 205. F- 7" blue Pinecone plate. Scarce! 150 247. White Stretch centerpiece bowl.
85 206. F- 7" blue Leaf Chain plate. 185 248. F- powder blue Stretch Diving Dolphins bowl
125 207. F- 7" frosty white Leaf Chain plate. 260 249. F- White Stretch 10" centerpiece bowl.
150 250. White Stretch Heavy Shell candlesticks.
45 251. Root Beer Stretch 4" vase.



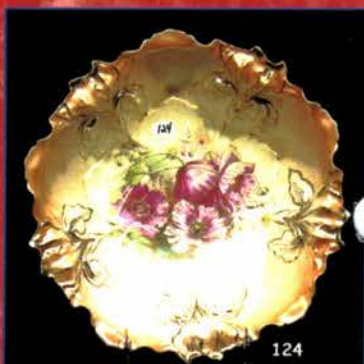
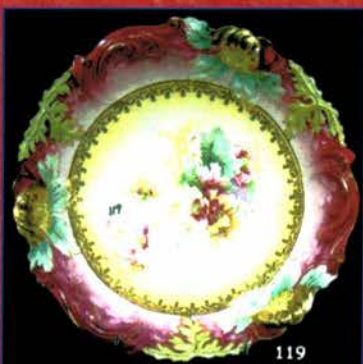
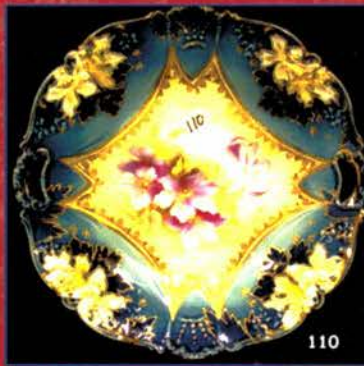
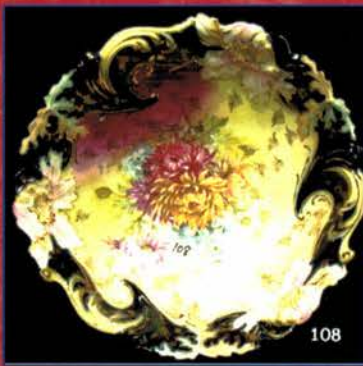
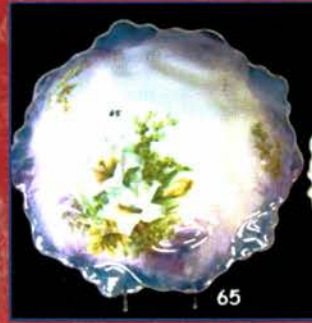
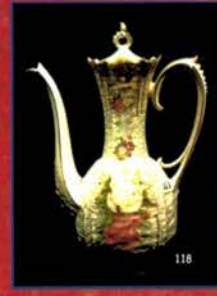
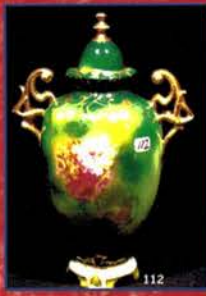
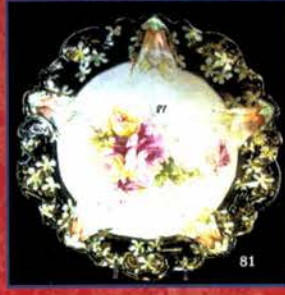
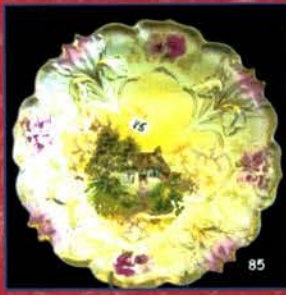
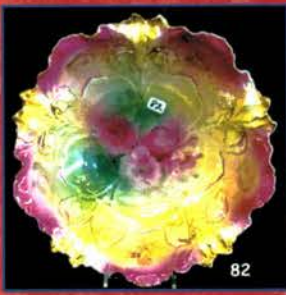
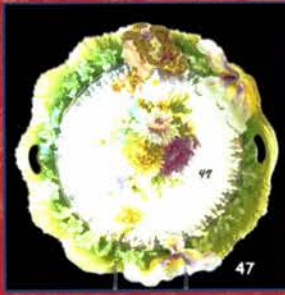
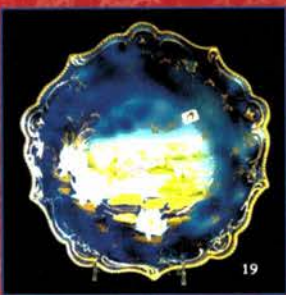


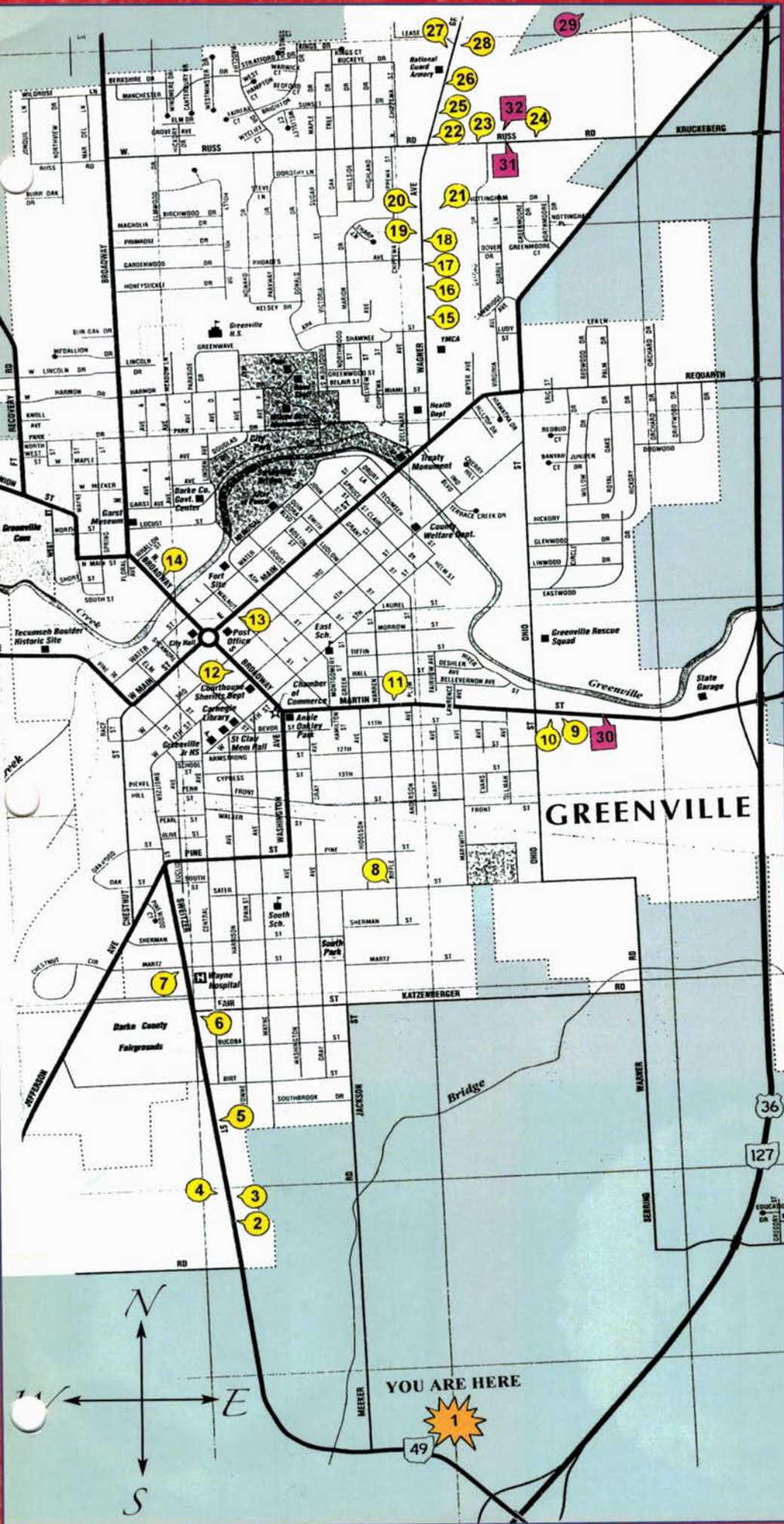
LISTINGS FOR CARNIVAL – SATURDAY

- 40 341. F – 8" blue Nine Sixteen vase *
30 342. F – 6 3/4" purple Diamond and Rib vase.
25 343. N – 7 1/2" green Fine Rib vase.
15 344. N – 8 1/2" blue Four Pillars vase. Has open bubble on base.
5 345. F 9" mari. Fine Rib vase.
50 346. F – 10 1/2" purple Rustic vase.
10 347. N – 10" mari. Thin Rib vase.
60 348. F – 10 1/4" amy. Long Thumbprint vase.
20 349. D – 10" mari. Spiralex vase.
15 350. F – 8 1/2" mari. Butterfly & Berry vase.
50 351. F – 11" purple April Showers vase
65 352. F – 9" blue Holly 8-ruffle bowl
35 353. F – mari. Cherry Chain 8-ruffle bowl.
55 354. F – 8 1/2" Vintage 3/1 edge bowl. *blue*
75 355. N – 8" purple Wishbone footed ruffled bowl.
60 356. F – 7 1/2" amy. Two Flowers spatula footed ruffled bowl.
30 357. N – blue Fruit & Flowers 2-handled bon bon.*
100 358. N – 8 1/2" purple Wishbone footed ruffled bowl.
125 359. F – purple Thistle banana boat.
100 360. N 8 1/2" purple Three Fruits ruffled bowl. Very pretty!
50 361. D – mari. Cherries 3-footed bowl.
20 362. D – 8" mari. Double Stemmed Rose dome footed bowl.
85 363. N – 8 1/2" green Strawberry ruffled bowl.
70 364. D – 8 1/4" purple Double Stemmed Rose dome footed ruffled bowl.
60 365. F – 9" green Autumn Acorns ruffled bowl.
25 366. D – 9" mari. Cosmos Variant 6-ruffle bowl.
80 367. F – mari. Horse Medallion 3-footed JIP bowl.
40 368. D – PO Single Flower 3/1 edge enameled bowl.
25 369. F – 8" mari. G & C ICS spatula footed bowl
70 370. F – 9" green Peacock Tail ruffled bowl.
40 371. F – 6" blue Sailboats ruffled sauce.
35 372. N – 8 1/2" pastel mari. Good Luck ruffled bowl. Pretty but does have flute missing.
130 373. N – 5" elec. blue Peacock at Urn sauce
70 374. N – 8 1/2" purple Three Fruits stippled ruffled bowl
100 375. N – 8 1/2" green Three Fruits ruffled bowl w/BW back.
200 376. N – 9" purple Three Fruits plate w/plain back.
100 377. N – 9" mari. Three Fruits plate w/BW back.
65 378. N – 8 1/2" green Three Fruits ruffled bowl w/BW back.
90 379. N – 9" green Fruits & Flowers ruffled bowl.
80 380. N – 9" mari. Fruits & Flowers ruffled bowl.
 381. N – 8 1/2" mari. Three Fruits PCE bowl w/BW back.
 382. N – 8 1/2" green G & C ruffled bowl.
 383. N – 8 1/2" purple Grape Leaves ruffled bowl
 384. N – 9" purple Fine Rib vase.
 385. M – 6" green Mayan low ICS bowl/plate. Radium.
 386. M – 9" green Blackberry Wreath ICS bowl.
 387. M – purple Hobnail Swirl rosebowl. Nick on top edge.
 388. D – 8 1/2" purple Windflower ruffled bowl.
 389. D – 8 1/2" mari. Weeping Cherries 3/1 edge ped. bowl.
 390. D – 8 1/2" PO Double Stem Rose ruffled bowl.
 391. D – 8 1/2" mari. Pony ruffled bowl.
 392. D – 5" purple Cherries ruffled bowl.
 393. Imp. 8" green Ripple vase.
 394. Imp. 6" elec. purple Heavy Grape bowl. Chip on edge.
 395. Imp. 10" green Octagon square bowl. Very Rare!
 396. F – 9" blue Peacock & Grape ruffled bowl.
 397. F – 8 1/2" mari. Dragon & Lotus 3/1 edge bowl.
 398. F – 9" blue Dragon & Lotus ruffled bowl.
 399. F – 8 1/2" blue Autumn Acorn 3/1 edge bowl. Scarce.
 400. F – 9" blue Ribbon Tie 3/1 edge bowl.
 401. F – 9 1/2" blue Cherry Chain ICS bowl w/OT ext.
 402. F – 9" blue Three Fruits 12-sided plate.
 403. F – 5" mari. Spearhead & Rib vase.
 404. F – mari. Cherry Circles 2-handled bon bon
 405. F – 8 1/2" green Leaf Chain ICS bowl.
 406. F – 8 1/2" green Stream of Hearts ruffled bowl. Pretty.
 407. F – 8 1/2" purple Captive Rose ruffled bowl.
 408. F – 9 1/2" green Persian Medallion ICS bowl. Rare.
 409. D – mari. 7pc. Vineyard water set
 410. F – blue Ground Cherries 6 pc. Water set.
 411. D – mari. Wreath of Roses rosebowl.
 412. N – blue opal Leaf & Beads candy dish. Not Carnival.
 413. N – IB Fine Cut & Roses rosebowl. Polished Feet??



NOTES





YOU ARE HERE

1. Midwest Auctioneers & Realty, Inc.
Jim Wroda Auction Services

RESTAURANTS

2. Back In Time Café
3. McDonald's Restaurant
4. Vint's Family Restaurant
5. Scoreboards & Bowling Alley
6. Fairlawn Steak House
7. Pizza Hut
8. Azor Scribners Family Restaurant & Lounge
9. El Camino Real "Authentic Mexican Food"
10. Dairy Queen (Seasonal)
11. Ferraro's Italian Restaurant
12. Gallagher's
13. Colony Restaurant
14. Maid Rite Sandwich Shop
15. Ponderosa Steak House
16. Wills Family Dining
17. Wendy's
18. Burger King
19. Captain D's Seafood Restaurant
20. Kentucky Fried Chicken
21. Subway Sandwiches & Salads
22. McDonald's Restaurant
23. Dragon Buffet
24. Tailgaters Sports Bar & Grill
25. Taco Bell
26. Bob Evans Farms Restaurant
27. Arby's
28. CJ Highmarks

HOTELS & WAL-MART

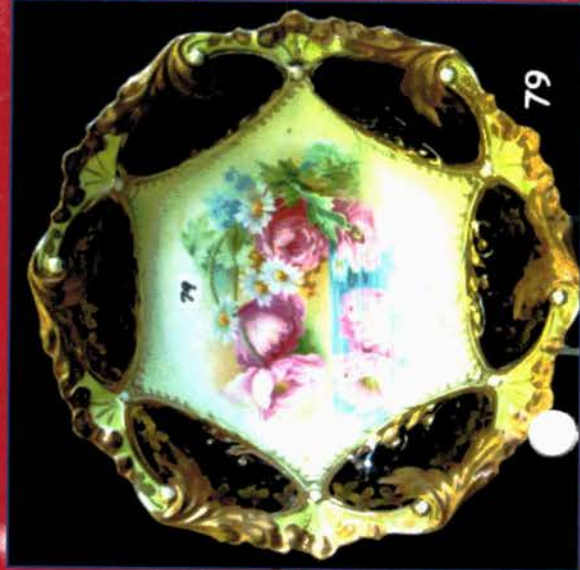
29. Wal-Mart SuperCenter - Open 24 Hrs
30. Greenville Inn
31. Holiday Inn Express
32. Comfort Inn

Midwest Auctioneers & Realty, Inc.
Jim Wroda Auction Services
5239 St. Rt. 49 South
Greenville, Ohio 45331



Presorted
First Class Mail
U.S. Postage Paid
Celina, Ohio
Permit No. 99

FIRST CLASS



015*004
Lee Markley
502 N Broadway
Po Box 306
Mentone IN 46539-0306