

BURNS

AUCTION SERVICE

Keystone Carnival Glass Club Convention Auction

10:00 a.m. Friday, May 21, 2004

(Preview: Fri. 8 - 10:00 a.m.; & possibly Thur. evening)

at the

Embassy Suites - Pittsburgh Airport
550 Cherrington Parkway, Pittsburgh, PA 15108
(near the Airport - off Bus. Rte. 60 at Thorn Run Rd.)

(412) 269-9070 or for reservations 1-800-362-2779

William Richards, Auctioneer • PA Lic. #AU 002 580L

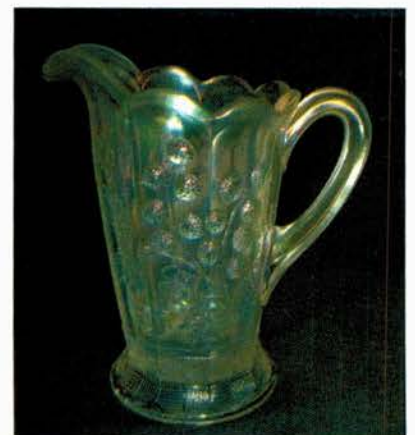


Two things about spring: It's not Winter...and the Keystone Carnival Glass Club's Convention is coming. This year they have a nice schedule of convention activities including this all-day Friday Auction.

We're really pleased to have a wonderful selection from consignors on both the East & West coasts - one of the better selections we've had in quite a while. The Keystone Convention will run Wednesday through Friday's Auction with the Banquet on Thursday evening.

The Embassy Suites - Pittsburgh Airport will host the event. It's located just off Business Rte. 60 at Thorn Run Rd., near the Airport. A great place for a fun Convention - we hope to see you there!

Mail, email, phone and fax bids are due by Thursday, May 20, 2004.



Burns Auction Service

Tom Burns, Manager
P.O. Box 608
Bath, New York 14810
(607) 776-7942 Cell: 731-9302

Bill Richards III, Auctioneer
PA Lic. #AU-002580L
2253 Country Lane, Poland, OH 44514
(330) 755-2620

Bill Richards
44 Water Street, Poland OH 44514
(330) 757-2001
FAX (330) 757-4917

Mail Bids honored under the following conditions:

1. No deposit required. Bidders will take full responsibility to honor any and all bids we execute for them. Payment in full plus postage and handling required after notification and before we ship any item to them.
2. Items are bid on in perfect condition with average or above average iridescence OR as listed in the brochures. Bids will not be carried out when damage on an item has been found during the auction. **PEOPLE PRESENT AT THE AUCTION ARE RESPONSIBLE FOR FINDING ANY PINHEADS, WEAR, SPOTTINESS, MANUFACTURER'S DEFECTS OR ANY OTHER MINOR FLAWS, ETC.**
3. Successful bidders will be notified by collect call from the auctioneer **SO BE SURE TO INCLUDE PHONE NUMBER.**
4. Phone inquiries about the glass or any other questions are welcome.
5. If you have some other person at the auction bidding for you, they must pay for the item before taking it.
6. Any terms or conditions given the day of the auction will supersede any previously published information.
7. Mail, e-mail, fax and phone bids are due by Thursday, May 20, 2004.

For photos of just about every item in every auction visit our website at:

<http://www.woodsland.com/burnsauction/>

1. Fenton Orange Tree Standard Flared Mug - Mari. / Vaseline (nice color; has check in body)
2. (3) N G & C Shot Glasses - Pur. (all three have problems - as is)
3. N G & C Powder Jar Base only - Pur. (no lid; nice irid.)
4. **N G & C 2 PC. CANDLE LAMP - GREEN (A SUPER EXAMPLE; ONE OF THE BETTER WE'VE SEEN)**
5. **MAKER? STRETCH 2 PC. CHIP & DIP DIVIDED SERVER WITH METAL TRIM, SIGNED 'ETCHARDT' - VASELINE (RARE AND VERY DESIRABLE STRETCH GLASS DECO ITEM; GREAT COLOR)**
6. Dugan Leaf Ray Ruffled Handled Nappy - Pur. (nice irid.)
7. Dugan Puzzle 2 Handled 2 Sided Bon Bon - Blue (very scarce base color: satiny)
8. **9" DUGAN FLOWERS & FRAMES DOMED 10 RUFFLED BOWL - PUR. (A BEAUTY; DARK BASE COLOR WITH BRIGHT IRID.)**
9. **8 1/2" DUGAN DOUBLE STEM ROSE DEEP 10 RUFFLED BOWL - AQUA (VERY RARE BASE COLOR FOR THIS PATTERN; HAS A MARI. OVERLAY)**
10. **3" TALL DUGAN STIPPLED ESTATE TRI-CORNERED VASE - P. OPAL. (SUPER RARE DUGAN ITEM; ONLY SEEN A VERY FEW; GREAT OPAL. AND REALLY NEAT)**
11. **DUGAN VINTAGE GRAPE COVERED POWDER JAR - WHITE (EXTREMELY RARE COLOR FOR THIS ITEM; FROSTY & NICE; HAS CHIP ON RIM OF LID)**
12. **8 1/4" DUGAN LATTICE HEART 8 RUFFLED BOWL - PUR. (VERY RARE DUGAN PATTERN; PERFECT WITH GREAT IRID.)**
13. **DUGAN PERSIAN GARDEN 2 PC. RUFFLED FRUIT BOWL & BASE - MARI. (VERY SCARCE 2 PC. SET; TOP INTERIOR IS GREAT!)**
14. **10 1/2" EUROPEAN PODS & POSIES (4 FLOWERS VARIANT) LOW RUFFLED BOWL - PUR. (RARE AND DESIRABLE; NICE WITH GREAT IRID.; HAS MANUF. GROUND BASE)**
15. **U.S. GLASS PALM BEACH PINCHED IN TRI-CORNERED BULBOUS VASE WHIMSEY - DK. MARI. / MILK GLASS (EXTREMELY RARE ITEM - PERIOD! DARK MARI. OVERLAY WITH GREAT IRID.)**
16. 5" Imperial Heavy Grape Low Handled Nappy - Pur. (scarce; super irid.)
17. 4 3/4" Imperial Grape Deep Round Berry Bowl - Pur. (super irid.)
18. 9" Imperial Pansy Deep 8 Ruffled Bowl - Pur. (scarce; has bright irid. - blue highlights)
19. 7 3/4" Imperial Optic Flute Low 6 Ruffled Bowl - Pur. (this color is very scarce in this pattern)
20. **IMPERIAL POINSETTIA HANDLED MILK PITCHER - SMOKE (RARE & DESIRABLE; HAS YELLOW HIGHLIGHTS)**
21. 5 1/2" Tall x 4 1/2" Top Diam. Flared Imperial Miniature Morning Glory Vase - Smoke (scarce; great shape & irid.)
22. **8 3/4" IMPERIAL SWIRLED paneled JACK IN THE PULPIT VASE - SMOKE (VERY SCARCE ; HAS SUPER IRID.)**
23. 5 1/2" Tall Signed Imperial (Iron Cross) Squatty 8 Ruffled Vase with 3 1/2" Base - Clear / Irid. (quite an unusual item; very different)
24. 8 1/2" Tall x 13 1/2" Long Imperial Zippered Heart 2 sided Pedestaled Banana Dish - Crystal (scarce shape for this large Crystal item)
25. **8 1/4" IMPERIAL LUSTRE ROSE 3 FTD. 6 RUFFLED BOWL - MARI. / VASELINE - GREEN (VERY SCARCE BASE COLOR; REALLY NICE)**
26. Imperial Grape Water Carafe - Dk. Mari. (very scarce; dark & rich color and irid.)
27. M'burg Hobstar & Feather Handled Basket - Crystal (very scarce item; has flake on edge)
28. 6" Tall M'burg Palm Wreath Celery Vase - Crystal (scarce)
29. 8 1/2" Maker? Vintage Grape Bowl with 3 in 1 Edge - Mari. (some believe this to be M'burg; not sure)

30. **9 1/2" M'BURG PEACOCK LG. ICE CREAM SHAPED BOWL - GREEN (VERY RARE AND VERY DESIRABLE; HAS TO BE ONE OF THE BETTER EXAMPLES I'VE SEEN - SUPER IRID.)**
31. **9" M'BURG PEACOCK DEEP FLARED MASTER BERRY BOWL - DK. MARI. (VERY SCARCE AND VERY ATTRACTIVE; GREAT COLOR AND IRID.)**
32. 9" M'burg Peacock at the Urn "Mystery" 6 Ruffled Bowl - Amy. (very scarce; satiny with nice detail)
33. **8 1/2" M'BURG TROUT & FLY ICE CREAM SHAPED BOWL - GREEN (ONE OF THE MORE ATTRACTIVE EXAMPLES I'VE SEEN; REALLY NICE & SATINY)**
34. 8 3/4" M'burg Trout & Fly Bowl with 3 in 1 Edge - Mari. (scarce with a nice satiny finish)
35. **8 3/4" M'BURG GRAPE WREATH VARIANT TRI-CORNERED BOWL - MARI. (I DON'T RECALL THIS PATTERN IN THIS SHAPE)**
36. 10 5/8" M'burg Hanging Cherries Bowl with 3 in 1 Edge - Mari. (scarce with a nice satiny finish)
37. M'burg Marilyn Tumbler - Mari. (scarce with an odd radium finish)
38. **9 5/8" M'BURG WHIRLING LEAVES 6 RUFFLED BOWL - GREEN (SUPER RADIUM FINISH - VERY ATTRACTIVE)**
39. 8" M'burg Grape Wreath 6 Ruffled Bowl - Green (radium & nice)
40. **M'BURG HANGING CHERRIES COVERED BUTTER DISH - GREEN (RARE ITEM WITH A REALLY NICE DARK FINISH)**
41. 7 1/2" Fenton Peacock at the Urn Deep Round Bowl - Mari. (very rare deep round shape; nice detail)
42. **6 1/4" FENTON PERSIAN MEDALLION FLAT PLATE - BLUE (A BEAUTY - EXCELLENT EXAMPLE)**
43. 7" Fenton Mirrored Lotus 6 Ruffled Bowl - Blue (scarce pattern)
44. 8 1/2" Tall Fenton Long Thumbprint Jack in the Pulpit Vase - Green (very odd shape; scarce)
45. **FENTON PRAYER RUG 2 HANDLED 2 SIDED BON BON - MARI. / CUSTARD (RARE AND DESIRABLE WITH A NICE MARI. OVERLAY)**
46. N Acorn Burr Round Master Berry Bowl - Dk. Mari. (a real nice example)
47. N Grape & Gothic Arches 5 pc. Round Berry Set - Dk. Mari. (actually quite a rare set to find)
48. N Singing Bird Tumbler - Mari. / Green (nice irid.)
49. **N G & C COLOGNE BOTTLE ONLY (NO STOPPER) - WHITE (EXTREMELY RARE; IF WE ONLY HAD THE TOP)**
50. **N G & C STIPPLED 2 HANDLED 4 SIDED BON BON WITH BASKETWEAVE EXT. - TOPAZ OPAL. (NOT IRIDIZED BUT AN EXTREMELY RARE N'WOOD ITEM IN THIS COLOR)**
51. N G & C Covered Compote Base only - Pur. (a beauty with reds and blues)
52. N G & C Covered Compote Lid only - Pur. (scarce part; average irid.)
53. **N MEMPHIS 2 PC. RUFFLED FRUIT BOWL & BASE - PUR. (PROBABLY THE NICEST PUR. EXAMPLE I'VE SEEN; HAS BRIGHT BLUE HIGHLIGHTS)**
54. **N PEACOCK AT THE FOUNTAIN 3 FTD. RUFFLED FRUIT BOWL - ELEC. BLUE (BRIGHT BLUE BASE GLASS; VERY DIFFERENT)**
55. **N PEACOCKS PLATE WITH NON-IRIDIZED RIBBED EXT. AND NARROW BASE - RENNIGER BLUE (VERY RARE ITEM; NICE DETAIL AND GREAT IRID.)**
56. **N PEACOCKS PLATE WITH RIBBED EXT. - SODA GOLD / AMY. (QUITE A RARE BASE COLOR FOR THIS PATTERN)**
57. **N GREEK KEY 8 RUFFLED BOWL WITH RIBBED EXT. - DK. MARI. (REALLY ATTRACTIVE & DESIRABLE EXAMPLE)**
58. **N LEAF & BEADS FTD. FLARED NUT BOWL - WHITE (EXTREMELY RARE COLOR FOR THIS PATTERN IN THIS SHAPE)**
59. **N POPPY SHOW FLARED PLATE - WHITE (VERY RARE & DESIRABLE WITH SUPER IRID.)**
60. **9 1/4" TALL N DRAPERY VARIANT SWUNG VASE - GREEN (NOW THIS IS A RARE VASE TO FIND - I HAVEN'T SEEN MANY; TOUGH!)**
61. **9 1/2" TALL N 4 PILLAR & DRAPE SWUNG VASE - POWDER BLUE / MARI. (THIS IS ANOTHER RARE VASE; CHIP ON BASE)**
62. **12 1/2" TALL X 4 1/2" BASE X 6 1/8" TOP FLARE N TREE TRUNK MID-SIZE SWUNG VASE - GREEN (VERY SCARCE AND VERY DESIRABLE; NICE COLOR AND IRID.)**
63. 13" Tall x 4 4/8" Base x 5 1/2" Top Flare N Thin Rib Mid-Size Swung Vase - Pur. (very scarce has really nice irid.)
64. **8 3/4" N WISHBONE FTD. PLATE WITH RUFFLES & RINGS EXT. - DK. MARI. (SUPER EXAMPLE; VERY DARK AND IMPRESSIVE)**
65. **9" N GOOD LUCK PLATE WITH RIBBED EXT. - DK. MARI. (A SUPER EXAMPLE; ABOUT AS DARK AS I'VE SEEN)**
66. **9" N GOOD LUCK STIPPLED PLATE WITH RIBBED EXT. - PASTEL MARI. (RARE ITEM WITH BRIGHT BLUE & YELLOW IRID.; SORTA SPINS ON ITS BASE)**
67. 9" N Good Luck 8 Ruffled Bowl with Basketweave Ext. - Green (very scarce and a nice satiny example)
68. N Memphis Punch Base only - Pur. (nice irid.)
69. (5) N Memphis Handled Punch Cups - Pur. (selling so much each for set)
70. **DUGAN DAISY WEB 2 SIDED CRIMPED EDGE HAT - PUR. (VERY RARE AND DESIRABLE; ATTRACTIVE SHAPE AND IRID.)**
71. Dugan Fishermans Handled Mug - Pur. (nice color and irid.)
72. 10 1/2" Dugan Ski Star Lg. 6 Ruffled Bowl with Compass Ext. - P. Opal. (nice opal.)
73. N G & C Oval Dresser Tray - Pur. (very scarce with excellent irid.)
74. N G & C Oval Pin Tray - Pur. (very scarce with excellent irid.)
75. **N (OR DUGAN) G & C 2 PC. PERFUME BOTTLE & STOPPER - PUR. (A SUPER EXAMPLE WITH BRIGHT BLUE HIGHLIGHTS)**
76. **8" N WISHBONE FTD. 8 RUFFLED BOWL WITH RUFFLES & RINGS EXT. - EMERALD GREEN (BRIGHT COLOR WITH NICE IRID.)**
77. N Peacock at the Fountain Punch Base only - White (really tough part if ya need it)
78. **10 1/2" FENTON CHRYSANTHEMUM LG. BALL FTD. ICE CREAM SHAPED BOWL - ELEC. BLUE (A BEAUTY WITH BRIGHT BLUE HIGHLIGHTS)**
79. Fenton Orange Tree Lg. ftd. 8 Ruffled Fruit Bowl - Blue (very scarce with nice irid.)
80. Fenton Orange Tree Lg. ftd. 8 Ruffled Fruit Bowl - Dk. Mari. (really nice example)
81. Fenton Butterfly & Berry Handled Water Pitcher - Mari. (nice satiny finish)
82. 8 1/4" Fenton Dragon & Lotus Ice Cream Shaped Bowl - Honey Amber (odd base color with a satiny finish)

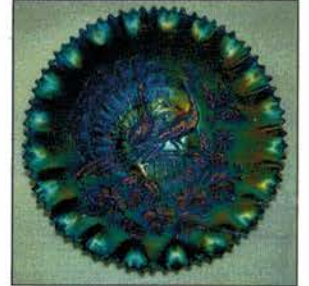
83. 7" Fenton Horsehead Medallion 6 Ruffled Bowl - Blue (scarce color; nice irid.)
84. Fenton Stream of Hearts Stemmed 6 Ruffled Crimped Edge Compote - Mari. (satiny irid.)
85. **FENTON HOLLY STEMMED 6 RUFFLED COMPOTE - RED / AMBERINA (RARE ITEM IN A DIFFERENT BASE COLOR)**
86. Fenton 2 Row Open Edge Jack in the Pulpit Hat - Red (nice red with dark satiny finish)
87. **FENTON paneled DANDELION 7 PC. TANKARD WATER SET - AMY. (VERY SCARCE AND DESIRABLE; WELL MATCHED AND NICE)**
88. 8 1/4" Fenton Peacock & Grape Ice Cream Shaped Bowl - Amy. (a very attractive example with bright irid.)
89. **9 5/8" FENTON CHERRY CHAIN LG. 8 RUFFLED BOWL - GREEN (RARE AND ATTRACTIVE BASE COLOR; REALLY NICE)**
90. **9 1/8" FENTON HEART & VINE FLAT PLATE - BLUE (RARE AND DESIRABLE; DARK WITH BRIGHT RED AND BLUE HIGHLIGHTS)**
91. **9 1/4" FENTON PEACOCK & GRAPE FLAT PLATE - DK. MARI. (RARE ITEM WITH BRIGHT & BEAUTIFUL IRID.)**
92. **FENTON STRAWBERRY 2 HANDLED 2 SIDED BON BON - LIME GREEN OPAL. (RARE AND DESIRABLE PASTEL - TOUGH TO FIND)**
93. **12" TALL X 3" BASE X 4 1/4" TOP DIAM. FENTON FINE RIB MID-SIZE SWUNG VASE - RED (RARE SIZE AND A VERY BRIGHT EXAMPLE)**
94. 12 1/2" Tall Fenton Diamond Rib Standard Swung Vase - Blue (attractive example)
95. **IMPERIAL LOGANBERRY VASE - DK. MARI. (RARE COLOR; DARK AND HAS GREAT IRID.)**
96. 12 3/4" Tall Imperial Ripple Standard Swung Vase - Pur. (odd swing with super irid.)
97. **DUGAN S REPEAT 11 PC. MASTER PUNCH SET - PUR. (RARE, RARE SET IN A NICE SHAPE WITH GREAT IRID.; HAIR-LINE IN BOWL)**
98. Dugan Beaded Shell Tumbler - Pur. (nice example)
99. Cambridge Inverted Strawberry Covered Powder Jar - Mari. (very scarce; nice color and irid.)
100. **7 1/4" M'BURG BLACKBERRY WREATH BOWL WITH 3 IN 1 EDGE - BLUE (A SUPER SATINY EXAMPLE OF THIS ITEM IN A VERY RARE COLOR)**
101. **M'BURG SEACOAST PIN TRAY - GREEN (RARE AND DESIRABLE; NICE COLOR AND DETAIL)**
102. **M'BURG SEACOAST PIN TRAY - AMY. (RARE AND DESIRABLE; NICE COLOR AND DETAIL)**
103. **M'BURG SEACOAST PIN TRAY - MARI. (RARE AND DESIRABLE; NICE COLOR AND DETAIL)**
104. N Dandelion Handled Mug - Pur. (scarce with excellent irid.)
105. **N STIPPLED SINGING BIRDS HANDLED MUG - COBALT BLUE WITH OPAL. (VERY RARE ITEM IN THIS COLOR - HAS OPAL. / SLAG EFFECT)**
106. **N STIPPLED SINGING BIRDS HANDLED MUG - GREEN (RARE VARIATION WITH SUPER IRID.)**
107. N Stippled Singing Birds Handled Mug - Dk. Mari. (very scarce and really nice)
108. **N SPRINGTIME HANDLED WATER PITCHER - PUR. (RARE ITEM WITH EXCELLENT COLOR AND IRID.)**
109. N Springtime Tumbler - Pur. (very scarce; matches above)
110. **N ORIENTAL POPPY 5 PC. TANKARD WATER SET - WHITE (RARE AND ATTRACTIVE SET; FROSTY & NICE)**
111. **N PEACOCKS BOWL WITH PIE CRUST EDGE AND RIBBED EXT. - ELEC. BLUE (RARE AND DESIRABLE; SUPER IRID.)**
112. **N PEACOCKS PLATE WITH RIBBED EXT. - WHITE (VERY SCARCE; SUPER EXAMPLE)**
113. N Peacock at the Urn Ind. Ice Cream Bowl - Elec. Blu (scarce with excellent color and irid.)
114. N Peacock at the Urn Ind. Ice Cream Bowl - Pur. (scarce; nice)
115. **N HEART & FLOWERS 8 RUFFLED BOWL WITH RIBBED EXT. - EMERALD GREEN (A SUPER, SUPER EXAMPLE; ONE OF THE BEST)**
116. **N HEART & FLOWERS 8 RUFFLED BOWL WITH RIBBED EXT. - ICE GREEN (RARE AND VERY DESIRABLE; NICE IRID.)**
117. **N HEART & FLOWERS 8 RUFFLED BOWL WITH RIBBED EXT. - DK. MARI. (RARE ITEM WITH GREAT DARK COLOR AND IRID.)**
118. N Drapery Rose Bowl - Aqua Opal. (rare with nice opal. and base color)
119. **9 1/4" N ROSE SHOW FLARED PLATE - ELEC. BLUE (RARE AND VERY ATTRACTIVE; BLUE HIGHLIGHTS)**
120. **N ROSE SHOW 8 RUFFLED BOWL - ICE GREEN (RARE AND DESIRABLE; DARK WITH NICE COLOR)**
121. **N ROSE SHOW 8 RUFFLED BOWL - ICE BLUE (RARE AND DESIRABLE WITH GREAT IRID.)**
122. **N ROSE SHOW 8 RUFFLED BOWL - GREEN (VERY RARE WITH EXCELLENT IRID. AND BASE COLOR)**
123. **N ROSE SHOW 8 RUFFLED BOWL - AMY. (VERY SCARCE; NICE BASE COLOR AND IRID.)**
124. **N ROSE SHOW 8 RUFFLED BOWL - AQUA OPAL. (RARE AND VERY DESIRABLE; GREAT OPAL. AND MARI. INTERIOR)**
125. **8 7/8" N ROSE SHOW DEEP FLARED PLATE - AMY. (VERY SCARCE AND DESIRABLE WITH NICE IRID.)**
126. **N LEAF & BEADS FTD. ROSE BOWL - ICE GREEN (RARE; PERFECT WITH EXCELLENT COLOR AND IRID.)**
127. **N LEAF & BEADS FTD. ROSE BOWL - WHITE (VERY SCARCE; FROSTY WITH EXCELLENT IRID.)**
128. **N LEAF & BEADS FTD. ROSE BOWL - AQUA OPAL. (AN EXCELLENT PASTEL EXAMPLE; NICE)**
129. **N LEAF & BEADS FTD. ROSE BOWL - AQUA OPAL. (A REALLY NICE BUTTERSCOTCH EXAMPLE)**
130. N Leaf & Beads ftd. Rose Bowl with Floral Int. - Ice Blue (rare item but is cracked)
131. N Leaf & Beads ftd. Rose Bowl with Floral Int. - Mari. (nice satiny finish)
132. N Blackberry Stemmed 6 Ruffled Compote with Basketweave Ext. - Green (scarce color with nice satiny irid.)
133. N Blackberry Stemmed 6 Ruffled Compote with Basketweave Ext. - Pur. (scarce with nice satiny irid.)
134. Signed NuArt Interior Panel Light Shade with Wheel Cut Floral Etching - White (a real neat item; different)
135. **IMPERIAL EMBOSSED SCROLL LG. 8 RUFFLED COMPOTE WITH CURVED STAR EXT. - PUR. (VERY SCARCE WITH EXCELLENT IRID. - A SUPER EXAMPLE)**
136. **9 1/4" IMPERIAL EMBOSSED SCROLL FLAT PLATE - DK. MARI. (ACTUALLY A NICE EXAMPLE WITH EVEN IRID.)**

- _____ 137. Dugan Heavy Iris Tankard Water Pitcher - Amy. (a super example but has damage near handle)
- _____ 138. Dugan Heavy Iris Tumbler - Pur. (super irid.)
- _____ 139. 8 1/4" Dugan Paneled Cherries 3 ftd. 10 Ruffled Bowl - Amy. (scarce with nice irid.; attractive)
- _____ 140. **8 1/2" FENTON PERSIAN MEDALLION 8 RUFFLED BOWL - RED (EXTREMELY RARE PATTERN IN THIS COLOR; TYPICAL DARK FINISH)**
- _____ 141. 10 1/8" FENTON FANTAIL 3 FTD. LOW 6 RUFFLED BOWL WITH B & B EXT. - BLUE (SCARCE SHAPE FOR THIS ITEM; SUPER IRID.)
- _____ 142. FENTON HORSEHEAD MEDALLION JACK IN THE PULPIT FTD. BOWL - MARI. / VASELINE (NICE DARK SATINY OVERLAY WITH A DARK BASE COLOR)
- _____ 143. Fenton 2 Row Open Edge Jack in the Pulpit Hat - Aqua / Sapphire (scarce color in this shape; nice)
- _____ 144. 8" Fenton Autumn Acorn Ice Cream Shaped Bowl - Blue (satiny)
- _____ 145. **10 1/2" TALL FENTON FINE RIB STANDARD SWUNG VASE - VASELINE OPAL. (ONE OF MY FAVORITE ITEMS; A SUPER LOOKER)**
- _____ 146. 10 5/8" Tall Fenton Fine Rib Standard Swung Vase - Mari. / Vaseline (scarce item with a dark overlay)
- _____ 147. 10 1/2" Tall Fenton Fine Rib Standard Swung Vase - Aqua / Sapphire (scarce and desirable base color; nice)
- _____ 148. 10" Tall Fenton Fine Rib Standard Swung Vase - Aqua / Green (odd base color; nice example)
- _____ 149. 10 1/2" Tall Fenton Fine Rib Standard Swung Vase - Green (dark & desirable)
- _____ 150. **9" FENTON STAG & HOLLY SPATULA FTD. FLAT PLATE - MARI. (RARE AND DESIRABLE; NICE, DARK AND SATINY; PERFECT)**
- _____ 151. 6" Fenton Pine Cone Flat Plate with Wide Panel Ext. - Green (very scarce with a bright satiny finish)
- _____ 152. 1910 New Orleans Shriner Stemmed Champagne Glass - Clear (scarce)
- _____ 153. **M'BURG HOBNAIL SPITTOON - GREEN (EXTREMELY RARE ITEM IN THIS COLOR; PERFECT WITH GREAT COLOR AND SATINY IRID.)**
- _____ 154. 7 1/2" TALL N 4 PILLAR RIBBED SQUATTY SWUNG VASE - ELEC. BLUE (REALLY NICE ITEM, BOTH IN SIZE & IRID.)
- _____ 155. 10 " TALL N TREE TRUNK STANDARD SWUNG VASE - AQUA OPAL. (RARE AND VERY DESIRABLE; GREAT OPAL. & IRID. - INSIDE IS FAIR)
- _____ 156. **N RASPBERRY HANDLED MILK PITCHER - WHITE (VERY RARE AND DESIRABLE; A BEAUTY WITH GREAT IRID.)**
- _____ 157. **N RASPBERRY HANDLED MILK PITCHER - GREEN (VERY SCARCE; BRIGHT COLOR WITH EXCELLENT IRID.)**
- _____ 158. **N ACORN BURR 7 PC. WATER SET - PUR. (RARE AND VERY DESIRABLE; WELL MATCHED AND NICE)**
- _____ 159. N G & C Shot Glass - Dk. Mari. (scarce with nice color and irid.)
- _____ 160. **N G & C STIPPLED BOWL WITH PIE CRUST EDGE AND RIBBED EXT. - AQUA OPAL. (RARE AND VERY DESIRABLE; HAS NICE LIGHT PASTEL FINISH)**
- _____ 161. **N G & C STIPPLED BOWL WITH PIE CRUST EDGE AND RIBBED EXT. - ICE BLUE (RARE AND DESIRABLE; RARE BASE COLOR WITH NICE IRID.)**
- _____ 162. **N G & C VARIANT STIPPLED 8 RUFFLED BOWL WITH RIBBED EXT. - SAPPHIRE (AN EXCELLENT EXAMPLE WITH BRIGHT IRID. - HAS IRID. RING AT BASE)**
- _____ 163. N G & C Variant 8 Ruffled Bowl with Plain Ext. - Amy. (attractive bright satiny irid.)
- _____ 164. (2) N G & C Stippled / Banded Cologne Bottles - Dk. Mari. (1st stopper is incorrect; 2nd stopper is damaged; bottles are great)
- _____ 165. **N G & C STIPPLED HUMIDOR - BLUE (RARE AND VERY DESIRABLE; HAS RARE TWIST ON LID)**
- _____ 166. **N GOOD LUCK BOWL WITH PIE CRUST EDGE AND RIBBED EXT. - ELEC. BLUE (TYPICAL EXCELLENT EXAMPLE WITH BRIGHT BLUE IRID.)**
- _____ 167. N Good Luck Bowl with Pie Crust Edge and Basketweave Ext. - Green (very scarce and desirable; an excellent satiny example)
- _____ 168. N Good Luck 8 Ruffled Bowl with Ribbed Ext. - Blue (very scarce with a dark irid.; nice)
- _____ 169. **8 1/2" N WISHBONE FTD. PLATE WITH RUFFLES & RINGS EXT. - MARI. (RARE AND VERY DESIRABLE; NICE SATINY FINISH)**
- _____ 170. **N MEMPHIS 8 PC. RUFFLED FRUIT BOWL SET - ICE BLUE (RARE AND VERY DESIRABLE SET; HAS CHIP ON ONE POINT OF BOWL)**
- _____ 171. **N THREE FRUITS STIPPLED 8 RUFFLED BOWL WITH RIBBED EXT. - AQUA OPAL. (AN EXCELLENT BUTTERSCOTCH EXAMPLE; REALLY NICE)**
- _____ 172. 8 7/8" Three Fruits Stippled Low Ice Cream Shaped Plate with Ribbed Ext. - Pur. (attractive item in a different deep shape)
- _____ 173. **N THREE FRUITS MEDALLION STIPPLED SPATULA FTD. 8 RUFFLED BOWL WITH MEANDER EXT. - AQUA OPAL. (A DESIRABLE PASTEL PIECE; SUPER IRID.)**
- _____ 174. **N PEACOCK AT THE URN LG. ICE CREAM BOWL - ICE GREEN (RARE AND DESIRABLE; GOLD HIGHLIGHTS AND A BIT OUT OF ROUND)**
- _____ 175. **N PEACOCK AT THE URN LG. ICE CREAM BOWL - WHITE (VERY ATTRACTIVE EXAMPLE - FROSTY WITH EXCELLENT IRID.)**
- _____ 176. N Peacock at the Urn Lg. Ice Cream Bowl - Mari. (very scarce with nice color and detail)
- _____ 177. **6 1/8" N PEACOCK AT THE URN IND. ICE CREAM BOWL - AMY. (LARGER FLARE WITH ABSOLUTELY SUPER IRID.)**
- _____ 178. **N PEACOCKS PLATE WITH RIBBED EXT. - ICE GREEN (VERY SCARCE AND VERY DESIRABLE WITH NICE IRID.)**
- _____ 179. N Singing Bird Handled Mug - Green (scarce; nice color)
- _____ 180. **N BEADED CABLE FTD. RUFFLED ROSE BOWL - AQUA OPAL. (RARE AND DESIRABLE WITH NICE PASTEL HIGHLIGHTS)**
- _____ 181. N Beaded Cable ftd. Ruffled Rose Bowl - Aqua Opal. (very scarce and a nice Butterscotch example)
- _____ 182. **N ROUND HANDLED BUSHEL BASKET - ICE GREEN (VERY SCARCE; NICE BASE COLOR AND IRID.)**
- _____ 183. N Daisy & Drape ftd. Turned In Vase - White (very scarce; frosty with really nice irid.)
- _____ 184. **N HEARTS & FLOWERS STEMMED 6 RUFFLED COMPOTE WITH RIBBED EXT. - WHITE (VERY SCARCE WITH EXCELLENT IRID.)**
- _____ 185. **N HOBNAIL NOVELTY TOWN PUMP AND TROUGH - TOPAZ OPAL. (NOT CARNIVAL BUT VERY ATTRACTIVE)**
- _____ 186. N Fine Cut and Roses ftd. Ruffled Rose Bowl - Pur. (nice dark item)

- _____ 187. 8 3/4" N G & C Variant 8 Ruffled Bowl with Plain Ext. - Amy. (scarce with nice irid.)
- _____ 188. **CZECH CASTLE SCENE LAMP SHADE ON BRASS TABLE FIXTURE - MARI. (SCARCE; INTERESTING ITEM; NICE DECOR.)**
- _____ 189. **(3) CZECH CASTLE SCENE SHADES ON BRASS HANGING FIXTURE - MARI. (SCARCE AND DESIRABLE OUTFIT; NICE SHADES)**
- _____ 190. **8 3/4" M'BURG PEACOCK AT THE URN "MYSTERY" BOWL WITH 3 IN 1 EDGE - MARI. (VERY SCARCE AND DESIRABLE; DARK & SATINY)**
- _____ 191. M'burg Holly Sprig 2 Handled Card Tray with Isaac Benesch 54th Anniversary - Mari. (scarce and satiny)
- _____ 192. Cambridge Inverted Feather Handled Covered Cracker Jar - Green (always scarce and desirable; nice irid.)
- _____ 193. 8 1/4" Dugan Six Petals 6 Ruffled Bowl - White (frosty with nice irid.)
- _____ 194. 8 3/4" Dugan Apple Blossom Twigs 10 Ruffled Bowl - P. Opal. (super opal. with a nice Mari. overlay)
- _____ 195. **DUGAN AMARYLLIS DOMED FLARED PLATE FROM COMPOTE - DK. MARI. (RARE AND DESIRABLE; DARK WITH EXCELLENT IRID. AND A NICE SHAPE)**
- _____ 196. Imperial Tulip & Cane Stemmed Goblet - Dk. Mari. (nice color; scarce)
- _____ 197. **8" IMPERIAL ROCOCO LG. DOMED DEEP ROUND MASTER BERRY BOWL - DK. MARI. (A VERY RARE ITEM IN THIS PATTERN; NICE)**
- _____ 198. 4 1/2" Imperial Windmill Deep Ind. Berry Bowl - Amy. (nice irid.)
- _____ 199. Westmoreland ABC Children's Cereal Bowl - Mari.
- _____ 200. **FENTON G & C ICE CREAM SHAPED BOWL - RED (RARE AND DESIRABLE DARK COLOR; SATINY)**
- _____ 201. **5 3/4" X 9 1/4" TALL FENTON STRETCH DIAMOND QUILT LG. 2 SIDED BASKET WITH METAL HANDLE - ICE BLUE (RARE AND ATTRACTIVE STRETCH ITEM; REALLY NICE)**
- _____ 202. **9 3/8" FENTON CAPTIVE ROSE FLAT PLATE - MARI. (RARE COLOR FOR THIS PATTERN; PRETTY NICE EXAMPLE)**
- _____ 203. **FENTON KITTENS 4 SIDED BOWL - AQUA / MARI. (RARE BASE COLOR WITH A MARI. OVERLAY)**
- _____ 204. 5" Fenton Lotus & Poinsettia 6 Ruffled ftd. Sauce - Blue (nice irid.)
- _____ 205. **FENTON DAISY CUT DINNER BELL - MARI. (RARE AND DESIRABLE; NICE COLOR AND PERFECT)**
- _____ 206. Fenton Daisy Cut Dinner Bell - Crystal (actually quite a scarce item)
- _____ 207. Souvenir Dinner Bell Etched "Souvenir of Lowell, Mich." - Mari. (rare and unusual; nice detail and color)
- _____ 208. Dugan Grape Delight 6 ftd. Ruffled Rose Bowl - Pur. (nice color and irid.)
- _____ 209. N G & C Covered Compote - Pur. (rare and desirable; nice average irid.)
- _____ 210. **N G & C STIPPLED BANDED FTD. OVAL BANANA BOAT - EMERALD GREEN (ABSOLUTELY BEAUTIFUL ITEM WITH BRIGHT IRID. - A SUPER GREEN; MAY HAVE A TINY DING OR 2 - OH WELL!)**
- _____ 211. **N G & C FTD. OVAL BANANA DISH - PUR (VERY SCARCE; NICE EXAMPLE)**
- _____ 212. N G & C Covered Butter Dish - Pur. (very scarce with super irid.)
- _____ 213. N G & C Covered Sugar Bowl - Pur. (very scarce; nice)
- _____ 214. N G & C Handled Creamer - Pur. (scarce; nice irid.)
- _____ 215. N G & C Spooner - Pur. (scarce; nice)
- _____ 216. **FENTON BOUQUET 6 PC. BULBOUS WATER SET - BLUE (RARE AND DESIRABLE; ATTRACTIVE AND WELL MATCHED)**
- _____ 217. Fenton Floral & Grape Bulbous Water Pitcher - Blue (super color with great irid. - really nice)
- _____ 218. Fenton Floral & Grape Tumbler - Blue (scarce; attractive)
- _____ 219. (2) Fenton Orange Tree Scroll Tumblers - Blue (very scarce and nice; selling choice)
- _____ 220. **IMPERIAL GRAPE WATER CARAFE - PUR. (VERY SCARCE WITH SUPER BRIGHT IRID.)**
- _____ 221. Imperial Windmill Oval Ruffled Relish Tray - Pur. (scarce with nice irid.)
- _____ 222. **IMPERIAL WINDMILL FLAT OVAL DRESSER TRAY - DK. MARI. (VERY SCARCE; AN EXCELLENT EXAMPLE)**
- _____ 223. Imperial Windmill Handled Milk Pitcher - Dk. Mari. (nice color and detail)
- _____ 224. 6" Imperial Windmill Ind. Ruffled Berry Bowl - Mari.
- _____ 225. Imperial Octagon 7 pc. Water Set with Manuf. Ground Base Tumblers - Mari. (nice color and irid.)
- _____ 226. Imperial Octagon Stemmed Wine Glass - Mari.
- _____ 227. 8" Imperial Ripple Standard Swung Vase - Mari.
- _____ 228. 8 1/2" Dugan Windflower 10 Ruffled Bowl - Mari.
- _____ 229. 7 7/8" Dugan Six Petals 6 Ruffled Bowl - P. Opal. (nice opal.)
- _____ 230. 8 1/2" Fenton Ribbon Tie Bowl with 3 in 1 Edge - Blue (satiny)
- _____ 231. N Singing Bird Handled Mug - Amy. ("Hotel Redington - Wilkes-Barre, Pa." stenciled on top edge)
- _____ 232. N G & C 2 Handled 4 Sided Bon Bon with Basketweave Ext. - Green (really nice, attractive example)
- _____ 233. N G & C 2 Handled 4 Sided Bon Bon with Basketweave Ext. - Mari.
- _____ 234. N Wishbone 8 Ruffled Bowl with Ruffles & Rings Ext. - Mari. (nice color)
- _____ 235. **N ROUND HANDLED BUSHEL BASKET - LT. AMY. / HOREHOUND (ODD BASE COLOR WITH AVERAGE IRID.)**
- _____ 236. N Round Handled Bushel Basket - Dk. Mari. (scarce; nice color)
- _____ 237. 11 1/2" Tall N Thin Rib Standard Swung Vase - Russet Green (nice irid.)
- _____ 238. 10" Tall N Tree Trunk Standard Swung Vase - Green
- _____ 239. 6 3/4" Tall N Thin Rib Squatty Swung Vase - Green (nice size)
- _____ 240. 10 1/2" N Diamond Point Swung Vase - Green (sorta nice)
- _____ 241. 8 1/4" N Wishbone ftd. 8 Ruffled Bowl with Ruffles & Rings Ext. - Green (nice and satiny)
- _____ 242. 8 3/4" N Wishbone ftd. 8 Ruffled Bowl with Ruffles & Rings Ext. - Amy. (satiny)
- _____ 243. 8 1/2" N Wishbone ftd. 8 Ruffled Bowl with Ruffles & Rings Ext. - Amy. (satiny, like above)
- _____ 244. N Blackberry Stemmed 6 Ruffled Compt with Basketweave Ext. - Pur. (scarce; nice irid.)
- _____ 245. **N PEACOCKS BOWL WITH PIE CRUST EDGE AND RIBBED EXT. - PUR. (VERY SCARCE WITH NICE SATINY IRID.)**
- _____ 246. **N G & C FTD. HATPIN HOLDER - GREEN (VERY SCARCE WITH NICE COLOR AND IRID.)**
- _____ 247. **N G & C COVERED BUTTER DISH - GREEN (PROBABLY ONE OF THE BEST I'VE SEEN - TOUGH!)**
- _____ 248. N G & C Breakfast Sugar & Creamer - Mari. (scarce; selling as a set)
- _____ 249. N Leaf & Beads ftd. Flared Nut Bowl with Smooth Rays Int. - Green (satiny)
- _____ 250. **FENTON FLOWERS FTD. ROSE BOWL - GREEN (RARE AND DESIRABLE; REALLY NICE COLOR AND IRID.)**

- _____ 251. Fenton Flowers ftd. Rose Bowl - Dk. Amber (chipped on feet)
- _____ 252. Fenton Flowers ftd. Rose Bowl - Blue (chipped on feet)
- _____ 253. Fenton Blackberry Spray 6 Ruffled Hat - Blue (satiny)
- _____ 254. 9" Fenton Thistle 6 Ruffled Bowl - Green (nice and satiny)
- _____ 255. **7 5/8" FENTON G & C LOW 8 RUFFLED BOWL - AQUA (VERY SCARCE BASE COLOR; A NICE EXAMPLE)**
- _____ 256. 8" Fenton G & C Spatula ftd. 8 Ruffled Bowl - Mari.
- _____ 257. Fenton Vintage Grape ftd. Fern Dish - Blue (super irid.)
- _____ 258. Fenton Vintage Grape ftd. Fern Dish - Dk. Mari. (really nice irid.)
- _____ 259. Fenton Kittens 6 Ruffled Bowl - Mari. (chipped)
- _____ 260. Fenton Zig Zag Enameled Bulbous Water Pitcher with Daisies - White (scarce and nice; check in handle)
- _____ 261. Fenton Plain Tumbler for above Pitcher - White (scarce; nice)
- _____ 262. Fenton Magnolia & Drape Enameled Bulbous Water Pitcher - Mari. (check in handle)
- _____ 263. Fenton Magnolia & Drape Tumbler - Mari. (nice decor.)
- _____ 264. Fenton Blackberry Spray 4 Sided Hat - Dk. Mari.
- _____ 265. 6" Fenton Sailboats 6 Ruffled Sauce - Mari.
- _____ 266. 8 1/2" Fenton Plain Stretch Console Bowl - Grecian Gold
- _____ 267. 10 3/4" Tall Fenton Plain Paneled Bud Vase - Mari.
- _____ 268. 10" Fenton Smooth Rays Tri-Cornered Crimped Edge Bowl - Mari.
- _____ 269. 9" Imperial Frosted Block Flat Plate - Clam. (signed)
- _____ 270. **11" IMPERIAL FILE FLARED CHOP PLATE - MARI. (RARE ITEM WITH GREAT IRID.; HAVEN'T SEEN MANY)**
- _____ 271. 7 1/2" Optic & Buttons Flat Plate - Pastel Mari. (super irid.)
- _____ 272. 8 3/4" Imperial Grape 8 Ruffled Bowl - Green (pretty nice example)
- _____ 273. 8" Imperial Windmill Oval Relish Tray - Helios Green
- _____ 274. 9" Imperial Pansy 8 Ruffled Bowl - Mari. (nice color)
- _____ 275. 5 1/4" Imperial Zippered Heart 6 Ruffled Sauce - Pur. (scarce; nice item)
- _____ 276. 9" Imperial Grape 8 Ruffled Bowl - Mari.
- _____ 277. 8 3/4" Imperial Floral & Optic ftd. Flared Bowl - Mari.
- _____ 278. 5 3/4" Imperial Interior Panels Plain Squatty Swung Vase - Mari.
- _____ 279. 7" Imperial Miniature Morning Glory Swung Vase - Mari.
- _____ 280. **IMPERIAL GRAPE 6 RUFFLED COMPOTE - AMBER (VERY SCARCE BASE COLOR WITH NICE IRID.)**
- _____ 281. 12 1/2" Tall Imperial Beaded Bullseye Odd Swung Vase - Dk. Mari. (odd swing with nice irid.)
- _____ 282. Imperial Octagon Wine Decanter & Stopper - Dk. Mari. (nice color)
- _____ 283. (4) Imperial Octagon Stemmed Wine Glasses - Dk. Mari. (selling so much each; nice)
- _____ 284. **IMPERIAL LITTLE BARREL NOVELTY PERFUME - DK. MARI. (VERY SCARCE WITH EXCELLENT COLOR AND IRID.)**
- _____ 285. **DUGAN GRAPE DELIGHT 6 FTD. FLARED NUT BOWL - WHITE (QUITE A SCARCE SHAPE IN THIS COLOR)**
- _____ 286. 8 1/4" Dugan Stippled Flower 6 Ruffled Bowl - Dk. P. Opal. (super example)
- _____ 287. 8" Dugan Ski Star Domed Tri-Cornered Bowl - Lt. P. Opal. (scarce shape)
- _____ 288. 9 3/4" Dugan Cosmos Lg. 6 Ruffled Bowl - Lt. Amy. (satiny)
- _____ 289. Dugan Puzzle Round 2 Handled Bon Bon - Very Lt. P. Opal.
- _____ 290. Dugan Twig Swung Bud Vase - Mari. / Clear

Notes



Burns Auction Service

P.O. Box 608
Bath, New York 14810

2004 Keystone Convention Auction!

First Class
US Postage
PAID
Permit No. 7
Hammondsport, NY

LEE MARKLEY
BOX 306
MENTONE IN 46539



46539+0306 04

