

SATURDAY, APRIL 17, 2004 - 9:00 A.M. - C.D.T.

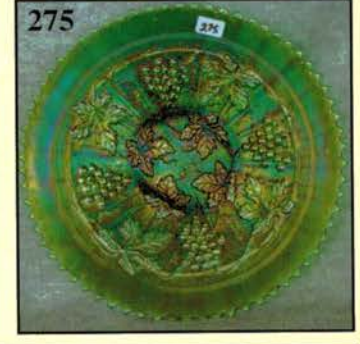
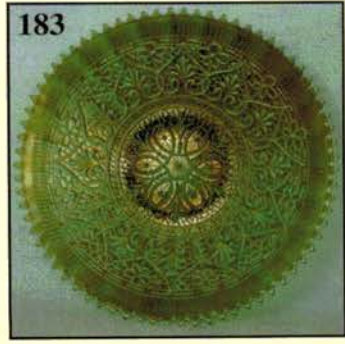
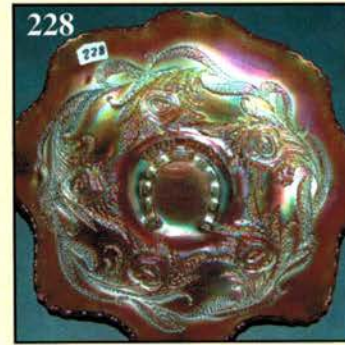
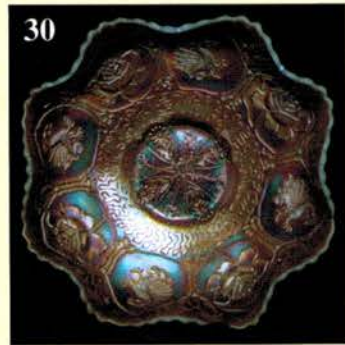
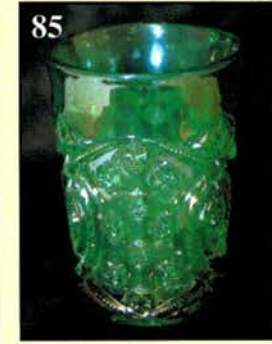
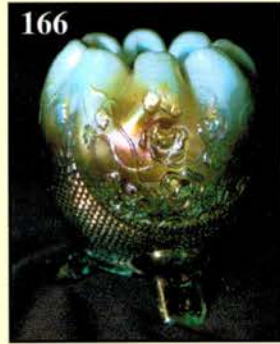
**Held in St. Louis, Missouri at the Crown Plaza Hotel
11228 Lone Eagle Dr., Bridgeton Exit off I-70 Hwy at Exit 235A, Lindbergh South**

Featured By the Mickey Reichel Antique & Auction L.C.

Office: 660-882-5292 • Home: 660-882-5283

E-mail: mreichel@awk-shn.com or mreichel@undata.com • NEW WEB SITE: www.AWK-SHN.com

WOODSLAND WORLD WIDE CARNIVAL GLASS ASSOCIATION CONVENTION



EVERYONE IS WELCOME

Held in St. Louis, Missouri at the Crown Plaza Hotel

11228 Lone Eagle Dr., Bridgeton Exit off I-70 Hwy at Exit 235A, Lindbergh South

Preview Friday 3 p.m.-5 p.m. and 7:30 a.m.-9:00 a.m. Day of Auction

CONVENTION INFORMATION FOR HOTEL: 1-800-227-6963 OR 314-291-6700 ASK FOR JASON KRAHL

NEW WEB SITE: www.AWK.SHN.com

ABSENTEE BID POLICY:

WRITE IN BIDS: If you are unable to attend the auction, we will be happy to accept absentee bids which must be received by TUESDAY, APRIL 13, 2004. Don't Delay. E-Mail: mreichel@awk-shn.com

FOR AUCTION PRICE RESULTS: Send \$3.00 and Large S.A.S.E. to 18350 Hunters Ridge Ct., Boonville, MO 65233

PLEASE NOTE: There is a **\$5 handling charge for each successful bid which will be added to the selling price** for all write-in bids. This is in addition to the cost of postage, insurance and packing. Your write-in bid will be entered just as if you are present and bidding. **Successful bidders will be notified in 1 to 3 days by the auctioneer (so be sure to include your phone number).** Direct mail bids to Auctioneer **Mickey Reichel, 18350 Hunters Ridge Ct., Boonville, MO 65233.** Terms: Cash or Check accepted with proper I.D. and Social Security Number and References. Announcements made day of the auction supercede all printed material. Not Responsible for Accidents or Sold Items.

No return on any items once they leave the Auction Center (No Exceptions).****

Call for additional information: 660-882-5292 days or 660-882-5283 evenings before 9:00 p.m.

FAX: 660-882-5292 (evening hours start FAX transmission after beep)

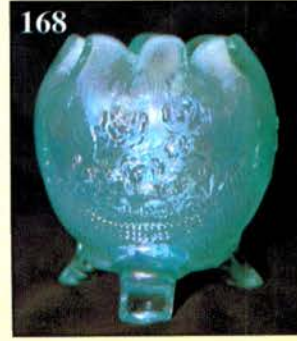
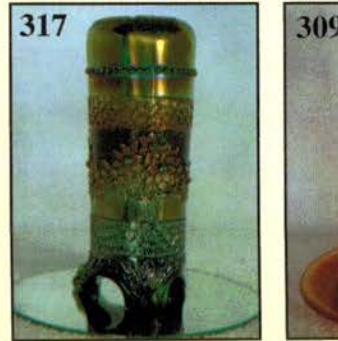
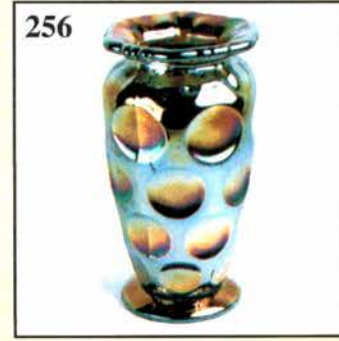
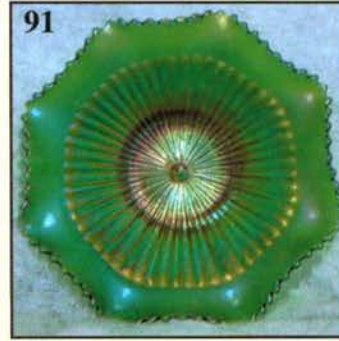
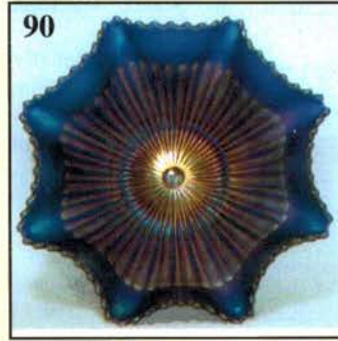
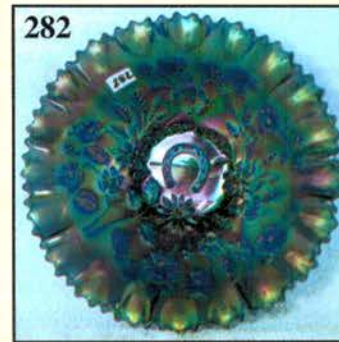
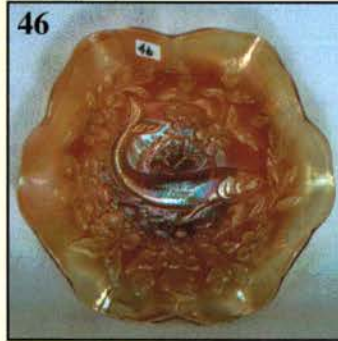
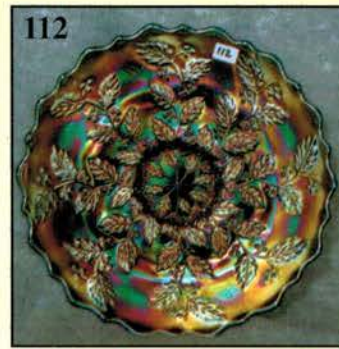
MAIL BIDS: Items are bid on in perfect condition with average or above iridescence OR as listed in the brochures. Bids will not be carried out when damage on an item has been found during the auction.

PEOPLE PRESENT AT AUCTION ARE RESPONSIBLE FOR FINDING ANY PINHEADS, WEAR, SPOTTINESS, MANUFACTURER'S DEFECTS OR ANY OTHER MINOR FLAWS, ETC. ****

NOTE: Read each line, as we have accentuated the type of no particular piece, all are special.

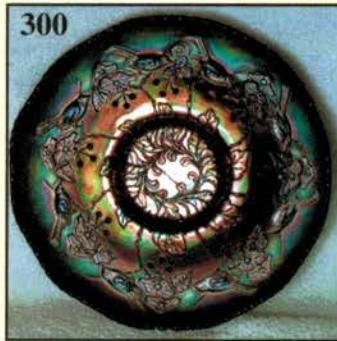
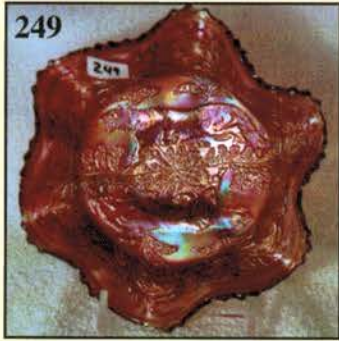
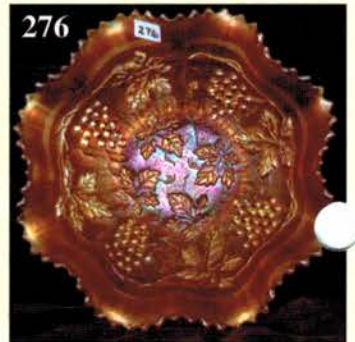
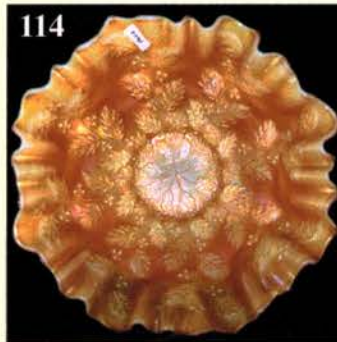
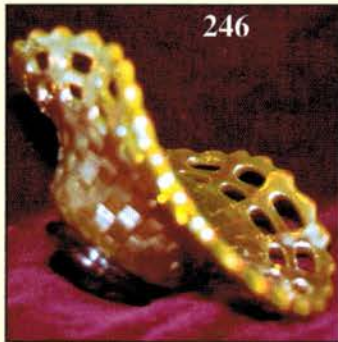
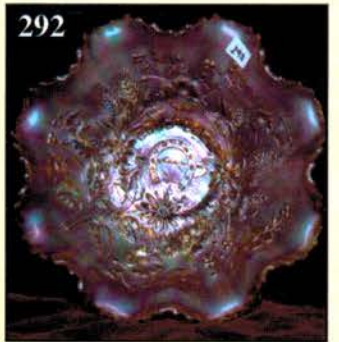
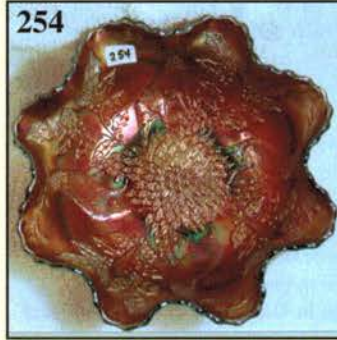
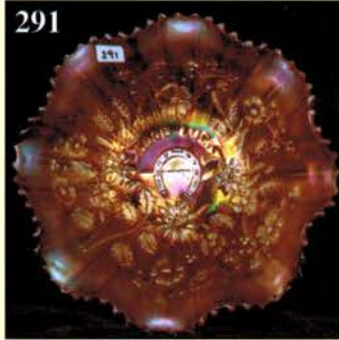
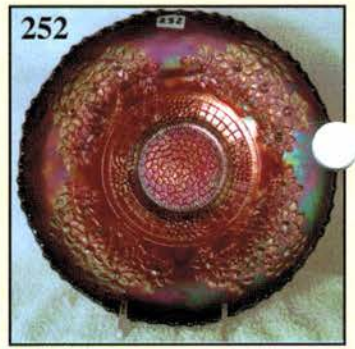
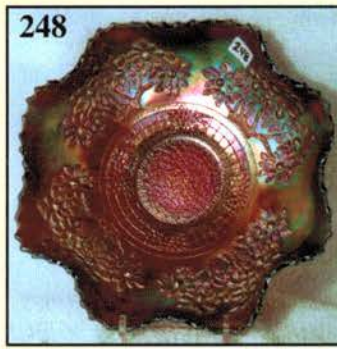
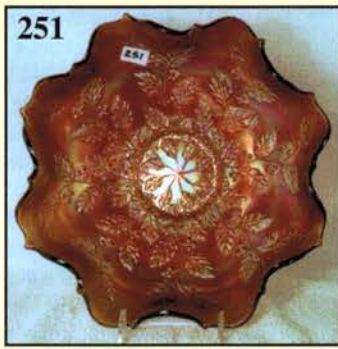
SPECIAL NOTE: Auctioneers have often been accused—and so wrongly, I might add—of excessive hyperbole when it comes to describing the carnival glass items in their auctions. However, this sale is so powerful, with so many great rarities, unusual shapes and spectacular color that I could write a paragraph about almost every piece in the sale. Instead, I will use this opening header to state the above and to remind readers that long-windedness could be applied to virtually every listing. I have suppressed my natural inclination to describe in illustrative terms, depending on the savvy of the buyers and my photographs to show the pieces to their best advantage. With these thoughts in mind, please read and enjoy the brochure! Mickey

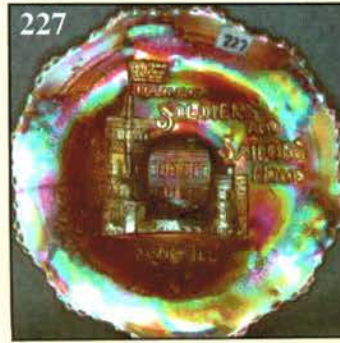
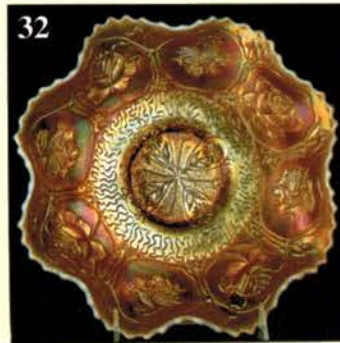
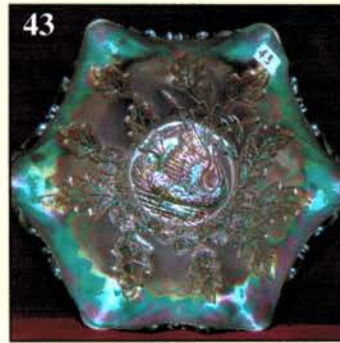
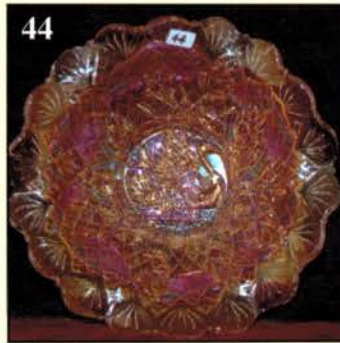
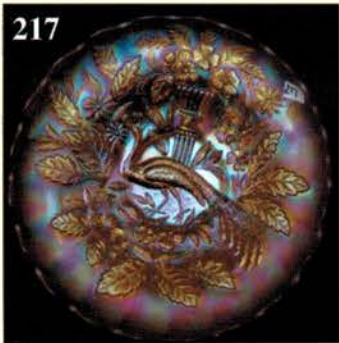
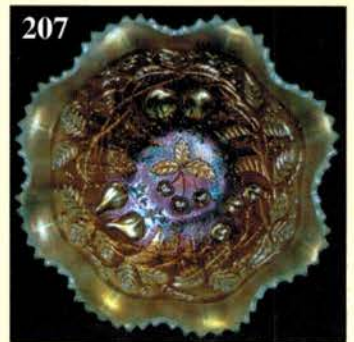
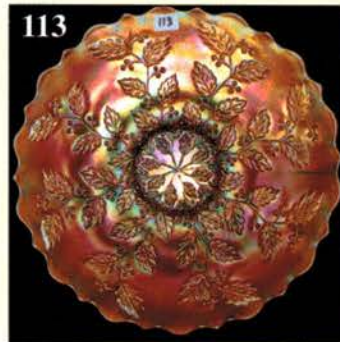
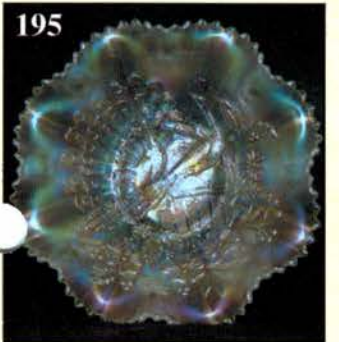
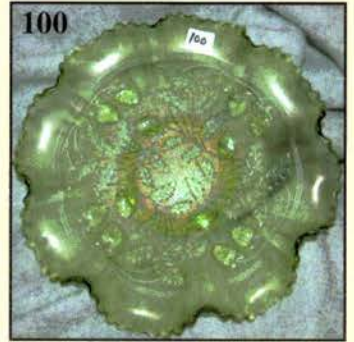
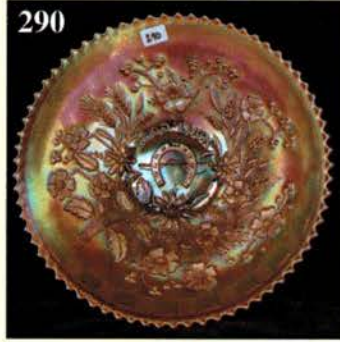
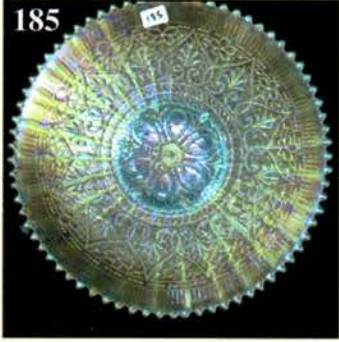
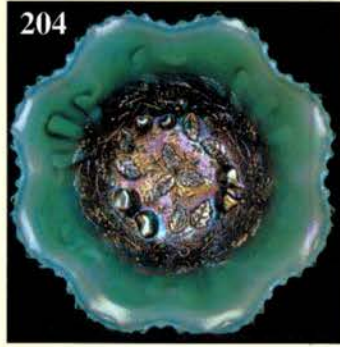
1. M-Fenton Night Set or Tumble Up-Complete
2. M-Fenton Guest Set with Cobalt Handle on Pitcher
3. M-Scroll Embossed Compote-Eastern Star Exterior
4. Ice G-5 1/2" Ruffled Cuspidor with Polished Pontil
5. Ice B-Brocaded Acorns 7 1/2" Plate
6. P-Imp. 7 3/4" Mini. Morning Glory Vase-Electric Purple
7. Clear Base-Imp. 7" Mini. Morning Glory Vase-Clambrath Overlay on Top Half
8. Yellow Amber-Fenton 9 3/4" Fine Rib Vase
9. B-Fenton 9 1/2" Butterfly and Berry Vase-Lots of Electric Tints
10. P-N 10" Thin Rib Vase-Multi Electric
11. M-Imp. 8" Beaded Bullseye Squatty Vase-5 1/2" Flared Opening
12. Awesome P-Fenton 19" Rustic Funeral Vase-5 1/4" Base, 7" Opening-These Funeral Vases Are on Fire Now and This One is LOADED with Color!
13. G-N 12" Mid-Size Funeral Vase-Emerald Green Highlights
14. G-Rustic or Hobnail Vt. Mid-Size 12 1/4" Funeral Vase-Great!
15. G-N 6 1/2" Squatty Tree Trunk Vase-Better Example
16. G-N 5 3/4" Squatty Diamond Point Vase-5 1/2" Opening-Unusual Size
17. G-N 10 1/4" Diamond Point Vase-Color Galore
18. Rare Sapphire-N 11 1/2" Diamond Point Vase
19. Pastel Lav. Horehound-N 10 1/2" Diamond Point Vase-Square Opening
20. Pumpkin M-N 7 1/2" Drapery Vase-Extra Nice



- _____ 21. Dark M-Imp. 10 1/2" Mid-Size Ripple Funeral Vase-4" Base, 6 1/2" Opening
- _____ 22. **Smoke-Imp. 8 1/2" Squatty Ripple Vase-5 1/2" Opening-Pastel Gem**
- _____ 23. Rich Amber-Imp. 12 1/4" Ripple Vase
- _____ 24. **Radium M-Jenkins 10 1/2" Cut Flowers Cylinder Vase-The Best!**
- _____ 25. Deep B-Fenton 9 1/2" Dragon and Lotus Plate-Multi-Electric Satin Rarity
- _____ 26. **Lime G Opal-Fenton 9", Collar Base, Eight Ruffle Dragon and Lotus Bowl-Unusual Irid. and a Rare Color**
- _____ 27. Rich Amber-Fenton 9", Collar Base, Eight Ruffle Dragon and Lotus Bowl-Pretty
- _____ 28. **Scarce A-Fenton 8 3/4" Three in One Edge, Collar Base Dragon and Lotus Bowl-Radium Dandy with Superb Color and Shape**
- _____ 29. G-Fenton 8 3/4", Three in One Edge, Collar Base Dragon and Lotus Bowl-Every Bit as Beautiful as the Previous One
- _____ 30. **Very Rare AO-Fenton 9", Eight Ruffle, Collar Base Dragon and Lotus Bowl**
- _____ 31. Cobalt B-Fenton 9", Low ICS, Collar Base Dragon and Lotus Bowl-Super Example
- _____ 32. **Fantastic PO-Fenton Ruffled, Collar Base Dragon and Lotus Bowl**
- _____ 32A. Vas-Fenton Ruffled, Collar Base Dragon and Lotus Bowl-Rich Multi-Color Irid.
- _____ 32B. **M-Fenton 8 1/2", ICS, Collar Base Dragon and Lotus Bowl-Pinkish Tint to Glass**
- _____ 33. Crystal-Eda Glass Works Golden Poppies 4 1/2" Round Bowl-Limited Production
- _____ 34. **Crystal-Eda Glass Works Golden Blackberries 5" Round Bowl-Limited Production**
- _____ 35. Crystal-Eda Glass Works-Golden Pansies 4 1/2" Round Bowl-Limited Production
- _____ 36. **Crystal-Eda Glass Works-Golden Pansies 6" Oval Pin Tray-Limited Production**
- _____ 37. Nifty G-N Grape and Cable 5" Round Bowl w/ Victorian S.P. Holder and Sterling Spoon
- _____ 38. **Rare Flash M-Libby 6 1/2" Maize Vase with Blue Flashed Stalks**
- _____ 39. M-Hobstar Band (?) 10" Large, Flared Bowl-Few Known
- _____ 40. **Elec B-N Fruits and Flowers Stemmed Bonbon**
- _____ 41. M-Fenton 7 pc. Nut Cup Set
- _____ 42. **Olive Stretch-N 7 1/4" #646 Flattened Card Tray**
- _____ 43. G-Mlbg. 10", Six Ruffle Nesting Swan Bowl-Satin Blues
- _____ 44. **Radium M-Mlbg. 9 1/2", Six Ruffle Nesting Swan Bowl-Great Irid.**
- _____ 45. Fantastic A-Mlbg 9", Three in One Edge Trout and Fly Bowl
- _____ 46. **M-Mlbg. 8 3/4", Six Ruffle Trout and Fly Bowl-Radium and Satin Irid.**
- _____ 47. A-Mlbg. 8 1/4", ICS Big Fish Bowl-They Don't Get Any Better Than This!
- _____ 47A. G-Mlbg. Hanging Cherry Vt. Tumbler-Radium
- _____ 48. **Scarce Radium A-Mlbg. 9", Three in One Edge Peacock at Urn Mystery Bowl-Super Fine!**
- _____ 49. Radium G-Mlbg. 10", Three in One Edge Many Stars Bowl w/ Five Point Star in Center-A Prime Example of This Rarity-Great Color and Shape
- _____ 50. **G-Mlbg. Hobstar and Feather Giant Rosebowl-Outstanding Find and Extra Nice-A Prize Millersburg Piece**
- _____ 51. P-Mlbg. Hobstar and Feather Giant Rosebowl-Electric Blues and Purples-Also A Prize Millersburg Piece
- _____ 51A. A-Mlbg. 9 3/4", Ruffled Rays and Ribbons Bowl-Radium Rainbow of Color
- _____ 52. **PO-Dugan 7 1/2", Six Ruffle, Enamel Decorated Stippled Flower Bowl-Unusual Item**
- _____ 53. PO-Dugan 9", Ten Ruffle Enamel Decorated Sin Flower Bowl-Great Treatment
- _____ 54. **Radium M-Fenton 4 1/2", Six Ruffle Kittens Bowl**
- _____ 55. M-Imp. 8", Deep, Round Acanthus Bowl-Pinks and Blues
- _____ 56. **Beautiful Smoke-Imp. 9", Six Ruffle Acanthus Bowl-Pastel Palette of Color**
- _____ 57. B-Brockwitz Headdress 9" Round Bowl-Curved Star Exterior-Seldom Offered
- _____ 58. **M-Fenton 6 1/2", Round, Flared Lions Bowl-Radium and Fully Detailed**
- _____ 59. B-Enamel Decorated Forget-Me-Not Tankard Water Pitcher-Enamelled Items Are Warming Up!
- _____ 60. **A-Enamel Decorated Iris with Prism Band Tumbler-Small Nick on Body**
- _____ 61. M-Enamel Decorated Lotus Tumbler
- _____ 62. **B-Enamel Decorated (Red) Ground Cherries Tumbler**
- _____ 63. M-Enamel Decorated Freesia Tumbler
- _____ 64. **B-Enamel Decorated Daisy and Little Flowers Tumbler**
- _____ 65. M-N Round Bushel Basket
- _____ 66. **AO-N Round Bushel Basket-Lots of Opal**
- _____ 67. P-N Grape Arbor Tumbler
- _____ 68. **P-N Oriental Poppy Tumbler-Pretty**
- _____ 69. P-N Singing Birds Tumbler-Purple Highlights
- _____ 70. **P-N Grape and Cable Tumbler-Electric Blue Tints**
- _____ 71. M-Fenton Lattice and Grape Tumbler
- _____ 72. **Rare G-N Peacock at Fountain Tumbler-Radium Finish**
- _____ 73. P-N Peacock at Fountain Tumbler-Pretty
- _____ 74. **Electric B-N Peacock at Fountain Tumbler**
- _____ 75. Pumpkin M-Imp. Tiger Lily Tumbler-Radium
- _____ 76. **Aqua-Imp. Tiger Lily Tumbler-Radium Gold and Silver**
- _____ 77. B-Near Cut Inverted Strawberry Tumbler-Mkd B on Base
- _____ 78. **Pumpkin M-Dugan Wreathed Cherry Tumbler**
- _____ 79. P-Imp. Windmill Tumbler-Radium Purple and Gold
- _____ 80. **Scarce A-Fenton Fluffy Peacock Tumbler-Superb Example**
- _____ 81. B-Fenton Butterfly and Berry Tumbler
- _____ 82. **M-N Stippled Singing Birds Mug-Extra Nice**
- _____ 83. B-Fenton Orange Tree Shaving Mug
- _____ 84. **A-N Memphis Punch Cup**
- _____ 85. Ultra Rare G-N Memphis Tumbler-One of a Kind!!
- _____ 86. **B-Fenton 11" Ball Ftd, Eight Ruffle Stag and Holly Bowl-Scarce Size**
- _____ 87. Deep Pumpkin M-Fenton 10", ICS, Ball Ftd Chrysanthemum/Windmill Bowl
- _____ 88. **B-Fenton 10 1/2", Eight Ruffle, Ball Ftd Chrysanthemum/Windmill Bowl-Electric Killer!**
- _____ 89. P-Dugan 11 1/4", Six Ruffle Victorian Bowl-Always in Demand
- _____ 90. **Rare B-N 9", Eight Ruffle Stippled Rays Bowl-BW Ext.-Rarely Found and Electric Color!**
- _____ 91. Emerald G-N 10", Eight Ruffle Stippled Rays Bowl-Smooth Ext.-WOW
- _____ 92. **P-N 10", Eight Ruffle Stippled Rays Salad Bowl-Not Often Seen**
- _____ 93. Electric G-N 9 1/2", Eight Ruffle Stippled Rays Bowl-BW Ext.-Super Offering
- _____ 94. **P-Fenton 9 1/2", Ftd, Eight Ruffle Butterfly and Berry Bowl-Just Outstanding Irid.**

- _____ 95. P-Dugan 7", Seven Ruffle Holly Berry Nappy-Multi Electric
- _____ 96. **P-N 7 1/4" Grape and Cable Vt. Plate-BW Ext.-Leaf Center-Scarce Size**
- _____ 97. P-N 9" Grape and Cable Vt. Plate-Smooth Ext.-Loaded With Fuschia Irid.
- _____ 98. **Wonderful Pastel M-N 8 3/4", Ruffled, Spat Ftd, Stippled Three Fruits Medallion Bowl**
- _____ 99. Brick Red-Fenton 7 1/2", Eight Ruffle Grape and Cable Bowl
- _____ 100. **RARE Lime G-N 9", Eight Ruffle Stippled Strawberry Bowl-Tough Item To Find**
- _____ 101. Lime Vas-Fenton 8", Round, Flared, Ball Ftd. Grape and Cable Bowl-Marigold Overlay
- _____ 102. **Pumpkin M-N PCE Stippled Strawberry Bowl-Rib Ext.-A Beauty**
- _____ 103. P-N 9", Eight Ruffle Stippled Strawberry Bowl-Rib Ext.-Rainbow Electric
- _____ 104. **Scarce B-N PCE Stippled Strawberry Bowl-Rib Ext.-A Great Electric Example**
- _____ 105. G-N 9", Eight Ruffle Strawberry Bowl-BW Ext.-Great Green Highlights
- _____ 106. **Dark B-Fenton 9", Three in One Edge Holly Bowl**
- _____ 107. Dark G-Fenton 9", Three in One Edge Holly Bowl
- _____ 108. **Aqua-Fenton 9", Three in One Edge Holly Bowl-Rare Color**
- _____ 109. Scarce A-Fenton 9", Three in One Edge Holly Bowl-Superior Iridescence
- _____ 110. **Yellow Vas-Fenton 9", Eight Ruffle Holly Bowl-Marigold Overlay**
- _____ 111. B-Fenton 9 1/4" Holly Plate-Marvelous Multi-Color Example
- _____ 112. **Fantastic G-Fenton 9 1/4" Holly Plate-Top of the Line Piece!**
- _____ 113. M-Fenton 9 3/4" Holly Plate-Pumpkin Highlights
- _____ 114. **Marigold over Milkglass-Fenton 9 1/4", Three in One Edge Holly Bowl-A Real Prize**
- _____ 115. White Slag Base-Fenton 9", Eight Ruffle Holly Bowl-Marigold Overlay
- _____ 116. **Moonstone-Fenton 6", Six Ruffle Holly Hat-Nice**
- _____ 117. Moonstone-Fenton 5 1/2", Six Ruffle Banded Blackberry Hat
- _____ 118. **Moonstone-Fenton 6 1/2", JIP, CRE Flowering Dill Hat**
- _____ 119. Moonstone-Westmoreland 8 1/4", Six Ruffle Carolina Dogwood Bowl
- _____ 120. **Blue Opal-Westmoreland 9", Six Ruffle Carolina Dogwood Bowl-Radium Blues**
- _____ 121. Persian B-Westmoreland Two Seventy 6", Round Compote
- _____ 122. **Super Rare Persian B-Fenton Pond Lily Card Tray Shape Bonbon**
- _____ 123. Clambroth-Fenton 9 1/4" Orange Tree Plate-Pinks and Golds
- _____ 124. **W-Fenton 9 1/2" Orange Tree Plate-Blues and Pinks**
- _____ 125. Radium M-Fenton 9 1/2" Orange Tree Plate-Hot Pinks!
- _____ 126. **M-Fenton 9 1/4" Peacock at Urn Plate-Just Dandy**
- _____ 127. B-Fenton 9 1/4" Peacock at Urn Plate-Loads of Greens and Purples, Different Effect
- _____ 128. **B-Fenton 8", ICS Orange Tree Bowl-Rampant Electric Blues**
- _____ 129. Scarce A-Fenton 8 1/2", ICS Peacock at Urn Bowl-Hard Shape To Find
- _____ 130. **G-Fenton 9", Three in One Edge Peacock at Urn Bowl-Scarce Shape and Gorgeous**
- _____ 131. Pumpkin M-Fenton 9", Eight Ruffle Peacock at Urn Bowl-Great, great color
- _____ 132. **A-Fenton 8 3/4", Eight Ruffle Peacock at Urn Bowl-Highly desirable**
- _____ 133. Rare Green-Fenton 9 1/4" Thistle Plate-Lots of Pinks!
- _____ 134. **Fantastic A-Fenton 9 1/4", Six Ruffle Thistle Bowl-Oh What Color**
- _____ 135. Rare Aqua-Fenton 9", Eight Ruffle Thistle Bowl-Beautifully Iridized
- _____ 135A. Scarce Vas-Fenton 9", Six Ruffle Thistle Bowl
- _____ 136. **M-Riihimaki Grand Thistle 6" Plate-Very Rare**
- _____ 137. M-Riihimaki Grape Medallion 5" Plate-Double Starflower Ext.-Exceptionally Rare
- _____ 138. **M-Brockwitz Curved Star Covered Compote w/ Lid and Underplate-Complete and Unique!**
- _____ 139. M Flash-Nine Swirled Rib Wine Glasses w/ Mirrored Tray-A Special Set!
- _____ 140. **G-Fenton 9" Peacock and Grape Spat Ftd. Plate-Nice Example**
- _____ 141. A-Fenton 9", Three in One Edge, Collar Base Peacock and Grape Bowl-Outstanding
- _____ 142. **A-Fenton 9", Eight Ruffle, Collar Base Peacock and Grape Bowl-Great Eye Appeal**
- _____ 143. B-Fenton 8 1/4", ICS, Collar Base Peacock and Grape Bowl-Scarce Shape and Pretty
- _____ 144. **Rare M-Fenton 9 1/4" Stag and Holly Spat Ftd. Plate-Blues and Pinks**
- _____ 145. M-Fenton 9", Eight Ruffle Coral Bowl-You Don't See This Pattern Much and It Is Especially Nice
- _____ 146. **Scarce G-Fenton 9", Eight Ruffle Coral Bowl-Another Tough and Nice Piece!**
- _____ 147. Teal-Fenton 9 3/4", Ball Ftd, Eight Ruffle Waterlily Bowl-Incredible Color
- _____ 148. **B-Fenton 9", Three in One Edge Low Ribbon Tie Bowl-Exceptionally Nice**
- _____ 149. Dark M-Fenton 9", Eight Ruffle, Collar Base Chrysanthemum/Windmill Bowl
- _____ 150. **Museum Quality Electric B-N Master Grape and Cable Punch Bowl, Base with 13 Cups-ULTRA RARE AND BEAUTIFUL, LEADING PIECE IN THIS AUCTION**
- _____ 151. P-N Master Grape and Cable Punch Bowl, Base and Eleven Cups-Lots of Bright Color
- _____ 152. **M-N Master Grape and Cable Punch Bowl, Base and Ten Cups-Dark and Multi-Color**
- _____ 153. Dark M-Imp. Fashion Punch Bowl, Base and Eight Cups-Another Great Punch Set
- _____ 153A. Crystal-Master Punch Bowl, Base and Six Cups-Unusual and Great Pattern Glass Find
- _____ 154. **Pastel M-N Peacock at Fountain Punch Bowl, Base and Six Cups-Many pink highlights**
- _____ 155. Dark M-Imp. Broken Arches Round Punch Bowl, Base and Six Cups-Plain Int.-Lots of Color
- _____ 156. **Beautiful M-Imp. 474 Punch Bowl, Base and Six Cups-Radium**
- _____ 157. B-Fenton Orange Tree Punch Bowl and Base-Scarce Flared Top on Bowl
- _____ 158. **M-Fenton Orange Tree Punch Bowl and Base-Also has Flared Top on Bowl**
- _____ 159. Vintage Grape Punch Bowl, Base and Six Cups-Wreath of Roses Ext.-Well Matched Set
- _____ 160. **Rare Smoke-Fenton Horse Medallion Rosebowl-Soft Marigold Overlay-Blue Tint to Feet**
- _____ 161. M-Imp. Star and File 5" Rosebowl-Radium and Nice



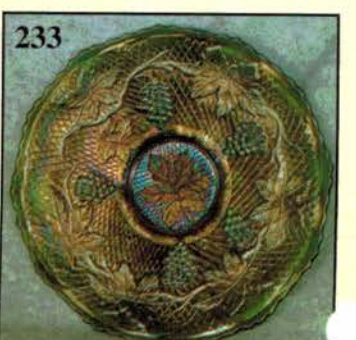
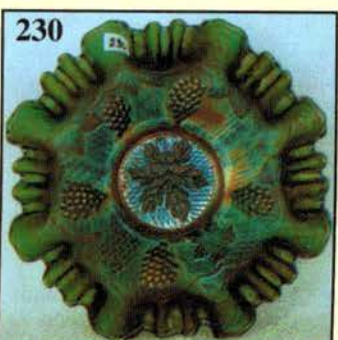
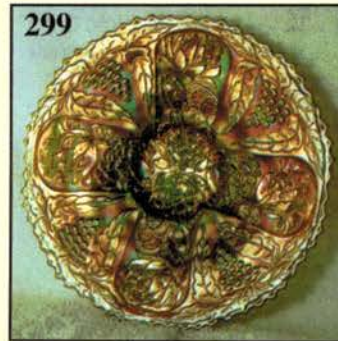
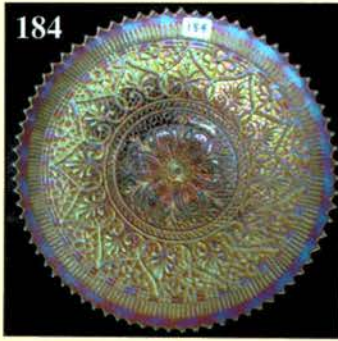
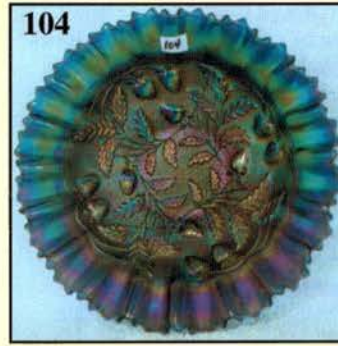
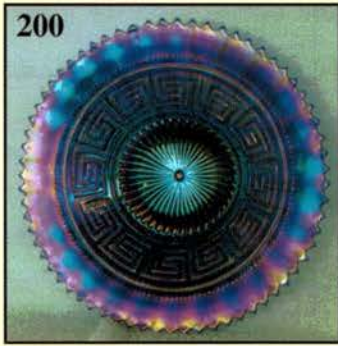


- _____ 162. **Dark Amber-Imp. 5 1/4" Open Rose Rosebowl-Great Color**
- _____ 163. P-Dugan Grape Delight Rosebowl-Wonderful Example
- _____ 164. **P-N Leaf and Beads Rosebowl-Sunflower Int.-Multi Color**
- _____ 165. Lav-N Fine Cut and Roses Rosebowl-Plain Int.-This is the variant that lacks the ring at the bottom of the bowl. Really doubly hard to find!
- _____ 166. **Rare AO-N Fine Cut and Roses Rosebowl-Fancy Int.-A Desirable Beauty**
- _____ 167. M-N Fine Cut and Roses Rosebowl-Plain Int.-Lots of Color
- _____ 168. **Rich Ice B-N Fine Cut and Roses Rosebowl-Fancy Int.**
- _____ 169. Scarce P-N Fine Cut and Roses Rosebowl-Fancy Int.
- _____ 170. **G-N Fine Cut and Roses Rosebowl-Plain Int.-Prime Example**
- _____ 171. AO-N Beaded Cable Rosebowl-Pastel Iridescence Deluxe
- _____ 172. **Pastel AO-N Leaf and Beads Rosebowl-Superb Radium Color**
- _____ 173. Scarce B-N Wild Rose Bowl-Stippled Rays Int.-Superior Piece
- _____ 174. **Lav-N Wild Rose Bowl-Stippled Rays Int.-Oh My Goodness!**
- _____ 175. Dark M-N Wild Rose Bowl-Stippled Rays Int.
- _____ 176. **Electric B-Fenton 9 1/2", Collar Base, Three in One Edge Ten Mums Bowl-Scintillating Color!**
- _____ 177. A-Fenton 9 1/2", Collar Base, Three in One Edge Ten Mums Bowl-Wowser
- _____ 178. **A-Fenton 10", Collar Base, Six Ruffle Ten Mums Bowl-A Winner**
- _____ 179. M-Fenton 10", Three in One Edge, Rare Scroll Ftd Ten Mums Bowl-Superb Pumpkin Irid.
- _____ 180. **G-Fenton Horse Medallion Ruffled, Ftd. Bowl-Scarce and nice!-Horses are hot**
- _____ 181. M-N Hearts and Flowers Ruffled Bowl-Rib Ext.-Always in Demand
- _____ 182A. **W-N Hearts and Flowers 9", Eight Ruffle Bowl-Rib Ext.-Pretty Blues**
- _____ 182. **P-N Hearts and Flowers 9", Eight Ruffle Bowl-High Quality Example**
- _____ 183. G-N Hearts and Flowers 9 1/4" Plate-Rib Ext.-Lime-ish Green, Rare and Desirable
- _____ 184. **P-N Hearts and Flowers 9 1/4" Plate-Rib Ext.-Best One Offered in Quite Awhile**
- _____ 185. Dark Ice B-N Hearts and Flowers 9 1/4" Plate-Rib Ext.-OUTSTANDING
- _____ 186. **B-N Hearts and Flowers Ruffled Compote-Rib Ext.-Top of the Line**
- _____ 187. M-N Peacocks Plate-Rib Ext.-Incredible Color, Really Superb
- _____ 188. **Renninger B-N 9 1/4" Stippled Peacocks Plate-Rib Ext.-Great, great color and very scarce**
- _____ 189. Exquisite M-N 9 1/4" Stippled Peacocks Plate-Rib Ext.-Mercy!!
- _____ 190. **B-N 9" Stippled Peacocks Plate-Rib Ext.-Multi Electric**
- _____ 191. W-N 9 1/4" Peacocks Plate-Smooth Ext.-Pastels Galore
- _____ 192. **Electric B-N 9" Peacocks Plate-Rib Ext.-Photo Tells It All**
- _____ 193. P-N PCE Peacocks Bowl-Rib Ext.-FAB-U-LOUS!
- _____ 194. **Lav-N PCE Peacocks Bowl-Rib Ext.-Rainbow Iridescent Rarity**
- _____ 195. W-N 8 1/2", Eight Ruffle Peacocks Bowl-Rib Ext.-Super Pastels
- _____ 196. **Electric Emerald Green-N 8 3/4", Eight Ruffle Peacocks Bowl-Rib Ext.-Unbelievable!**
- _____ 197. Pastel AO-N 8 3/4", Eight Ruffle Peacocks Bowl-Rib Ext.
- _____ 198A. **Renninger B-N PCE Stippled Peacocks Bowl-Rib Ext.-Excellent Example**
- _____ 198. **P-N Fruits and Flowers Stemmed Bonbon-Out of This World Color**
- _____ 199. P-N Grape and Cable Sweetmeat Compote w/ Lid
- _____ 200. **ULTRA RARE B-N 9" Greek Key Plate-Rib Ext.-A Magnificent Piece and A Top Item in the Auction**
- _____ 201. G-N 9" Greek Key Plate-BW Ext.-Another Winner!
- _____ 202. **P-N 8 3/4", Eight Ruffle, Collar Base, Stippled Three Fruits Bowl-Rib Ext.-Awfully Pretty**
- _____ 203. Rich M-N 9" Stippled Three Fruits Plate-Rib Ext.-Breathtaking
- _____ 204. **Dark Pastel AO-N 9", Eight Ruffle, Spat Ftd. Stippled Three Fruits Medallion Bowl**
- _____ 204A. **Electric B-N 9" Stippled Three Fruits Plate-Rib Ext.-Wonderful Color**
- _____ 205. P-N 9" Stippled Three Fruits Plate-Rib Ext.-Struck Up Well and Electric Everywhere
- _____ 206. **M-N 9" Eight Ruffle, Collar Base Stippled Three Fruits Bowl-Rib Ext.-Splendid Color**
- _____ 207. AO-N 9", Eight Ruffle, Collar Base Stippled Three Fruits Bowl-Rib Ext.-Another Great One
- _____ 208. **Electric B-N PCE Stippled Three Fruits Bowl-Rib Ext.-A Tough, Super Find**
- _____ 209. B-N 9", Ruffled Embroidered Mums Bowl-Another Winner
- _____ 210. **G-N 10 1/2", ICS Grape and Cable Bowl-BW Ext.-Choice Piece**
- _____ 211. M-N 10 1/4", ICS Grape and Cable Bowl-BW Ext.-Hot Pinks and Blues
- _____ 212. **Ice B-N 10 1/4" ICS Peacock at Urn Bowl-Excellent Blues, Pinks, Yellows**
- _____ 213. Ice B-N 5 3/4" ICS Peacock at Urn Bowl
- _____ 214. **G-N 5 3/4" ICS Peacock at Urn Bowl-Very Difficult Piece to Acquire**
- _____ 215A. Electric B-N 10", ICS Peacock at Urn Bowl
- _____ 215. Electric B-N 5 1/2" ICS Peacock at Urn Bowl
- _____ 216. **Rare M-N 9 1/4" ICS, FULLY STIPPLED Peacock at Urn Bowl-Marvelous Multi-Color Irid.**
- _____ 217. M-N 9 3/4", ICS Peacock at Urn Bowl-Pastel Dandy
- _____ 218. **P-Dugan 11", Six Ruffle Ski Star and Compass Bowl-Tiffany Style Irid.**
- _____ 219. Super Electric P-Dugan Ten Ruffle, Dome Ftd. Stippled Petals Bowl
- _____ 220. **P-Imp. 7 1/4", Ruffled Scroll Embossed Bowl-File Ext.**
- _____ 221. P-Dugan 9", CRE Cherries Ftd. Plate
- _____ 222. **P-Dugan Dome Base, 8 1/4", Ten Ruffle Deep Dogwood Sprays Bowl**
- _____ 223. A-Dugan 9", Low Ten Ruffle Roundup Bowl/Plate?-Enticing Color
- _____ 224. **W-Dugan 9", Three in One Crimp Roundup Bowl/Plate?-Pastel Beauty**
- _____ 225. W-Dugan 9" Apple Blossom Twigs Plate-Very Flat w/ Stretch Pastels.
- _____ 226. **W-Dugan 8 3/4" Fanciful Plate-Lots of Pastel Coloration**
- _____ 227. M-Fenton Illinois Soldiers and Sailors Home 7 3/4" Advertising Plate-Outstanding and Advertising is HOT, HOT, HOT!
- _____ 228. **Rare M-Fenton 9", Eight Ruffle Good Luck/Heart and Vine Bowl-First Rate and Desirable**

- _____ 229. Very Scarce A-Fenton 5", Round Garden Mums Bowl
- _____ **230. G-Fenton 8 1/2", Three in One Edge Concord Bowl-Beautiful Pattern and Near Emerald**
- _____ 231. M-Fenton 9 1/4" Concord Plate-Always in Demand
- _____ **232. A-Fenton 9", Six Ruffle Concord Bowl-Alluring Color and Irid.**
- _____ 233. G-Fenton 9 1/4" Concord Plate-One of the Top Plates in This Auction, w/ Emerald Highlights
- _____ **234. A-Fenton 9 1/4" Concord Plate-Another Glorious Item**
- _____ 235. Scarce M-Fenton 9" Peacock Tail Plate-Flat and Nice
- _____ **236. M-Fenton 6 1/4" Persian Medallion Plate**
- _____ 237. B-Fenton 6 3/8" Round Multi Electric Pine Cone Plate
- _____ **238. Deep G-Fenton 7 1/4" Cherry Circles Bonbon-A Dandy!**
- _____ 239. P-N 8 3/4", Eight Ruffle, Ftd Wishbone Bowl-Golds and Silvers
- _____ **240. Sapphire Base-Fenton 5 1/2", Ruffled Two Row, O.E. Basket**
- _____ 241. B-Fenton 5", Six Ruffle Holly Compote
- _____ **242. Smoky B-Imp. 9", Round, Flared Open Rose Bowl-Extremely Scarce Color**

Excellent Run of Red Pieces, Red is Climbing Again!

- _____ 243. Red-Fenton 5 1/2", JIP Two Row, O.E. Hat
- _____ **244. Red-Fenton 6", Six Ruffle Blackberry Spray Hat-Scarce Two Sets of Berries Example**
- _____ 245. Red-Fenton 6 1/2", Six Ruffle Holly Hat-Red At Its Best
- _____ **246. Reverse Red Amberina Opal-Fenton 6" Two Row O.E. Basket-Two Sides Up**
- _____ 247. Fantastic Red-Fenton 8", Eight Ruffle, Spat Ftd. Two Flowers Bowl-Minor Flaw on Spur
- _____ **248. Super Red-Fenton 9", Eight Ruffle Orange Tree Bowl-MERCY!!**
- _____ 249. Super Red-Fenton 6", Six Ruffle Panther Bowl
- _____ **250. Ultra Rare Red Opal-Fenton 8", ICS, Collar Base Dragon and Lotus Bowl-Few Known Examples**
- _____ 251. Red Amberina Swirl-Fenton 9", Ruffled Holly Bowl
- _____ **252. Red-Fenton 8 3/8", ICS Orange Tree Bowl-Hard Shape to Find in Red!**
- _____ 253. Rare Red-Fenton 6 3/4", ICS Peacock Tail Bowl
- _____ **254. Red-Fenton 8", Eight Ruffle, Spat Ftd. Stag and Holly Bowl-Awesome Yellow Feet-Fantastic Complementary Colors**
- _____ 254A. Red-Fenton 7 1/4", Six Ruffle Leaf Chain Bowl-A Nice One
- _____ **254B. Red-Fenton Goblet Shape Holly Compote-Scarce and Desirable**
- _____ 255. B-Rose Garden 5 3/4" Small Vase-Eda or Brockwitz-Electric Irid.-Normal factory roughness on rim
- _____ **256. Rare B-Kulor 6" Vase-Made by Eda-Super Color**
- _____ 257. M-Riihimaki Bishop's Mitre Vase-Rare Beauty
- _____ 257A. P-Westmoreland 8 3/4" Corinth Vase
- _____ **258. AWESOME B-N 10 3/4" Tree Trunk Vase-Electric Blues Galore**
- _____ 259. P-N 10 3/4" Tree Trunk Vase-Minor Peeling on Tip-Electric Irid. Everywhere
- _____ **260. P-N 10" Diamond Point Vase-Square Opening**
- _____ 261. P-N 10 1/4" Thin Rib Vase-Multi Electric
- _____ **262. Blue Opal-N 9 3/4" Tree Trunk Vt. Vase-Not Iridized**
- _____ 263. Red-Fenton 9 3/4" Fine Rib Vase-Nice One
- _____ **264. G-Fenton 11" Diamond and Rib Vase-Very Fine**
- _____ 265. G-Fenton 6 3/4" Squatty April Showers Vase-Peacock Tail Int.-5 3/4" Opening
- _____ **266. Gorgeous A-Imp. 11 1/2" Ripple Vase-Great Detail and Color**
- _____ 267. M-Imp. 11 1/2" Beaded Bullseye Vase-Super Radium Finish
- _____ **268. Dark P-Dugan 11 1/4" Pulled Loop Vase-Scarce and Electric**
- _____ 269. A-Dugan 10 3/4" Pulled Loop Vase-Pretty Piece
- _____ **270. PO-Dugan 11" Pulled Loop Vase-Lots of Opal, Lots of Pinks!**
- _____ 271. Scarce Dugan B-11 1/4" Spiralex Vase
- _____ **272. Fabulous M-Dugan 9 1/2" Lined Lattice Vase-Dripping With Color**
- _____ 273. W-Dugan 11" Big Basketweave Vase-Pastel Jewel
- _____ **274. P-N 9" Stippled Grape and Cable Vt. Plate-BW Ext.-Very, Very Scarce**
- _____ 275. Green-N 9" Stippled Grape and Cable Vt. Plate-Rib Ext.-Luscious Emerald Highlights
- _____ **276. Pumpkin M-N 8 1/2", Eight Ruffle Grape and Cable Vt. Bowl-Rib Ext.**
- _____ 277. Green-N 8 1/2" Eight Ruffle Grape and Cable Vt. Bowl-Rib Ext.-Beautiful Rarity
- _____ **278. Deep P-N 8 3/4" Eight Ruffle Grape and Cable Vt. Bowl-Rib Ext.-Outstanding Example**
- _____ 279. Electric B-N PCE Grape and Cable Vt. Bowl-Rib Ext.-Very Rare and Highly Desirable
- _____ **280. Scarce G-N PCE Good Luck Bowl-BW Ext.**
- _____ 281. Pumpkin M-N PCE Good Luck Bowl-Rib Ext.-Great Pinks
- _____ **282. Elec. B-N PCE Good Luck Bowl-Rib Ext.-High Quality Color and Example**
- _____ 283. B-N PCE Stippled Good Luck Bowl-Rib Ext.-Electric Blues, Purples and More
- _____ **284. Scarce G-N 8 3/4", Eight Ruffle Good Luck Vt. Bowl-BW Ext.**
- _____ 285. P-N 8 1/2", Eight Ruffle Good Luck Bowl-Rib Ext.-High Voltage Electric
- _____ **286. P-N 8 3/4", Eight Ruffle Good Luck Bowl-BW Ext.-One of the Best**
- _____ 287. Lav/Horehound-N 8 3/4", Eight Ruffle Good Luck Bowl-BW Ext.-Great Rarity
- _____ **288. B-N 8 3/4", Eight Ruffle Good Luck Bowl-Rib Ext.-Where Are My Shades?**
- _____ 289. B-N 8 3/4" Stippled, Ruffled Good Luck Bowl-Rib Ext.-Quality, Color and Desirability
- _____ **290. M-N 9 1/4" Flat Good Luck Plate-BW Ext.-Just About the Best I've Seen**
- _____ 291. M-N 8 3/4", Eight Ruffle Good Luck Bowl-Rib Ext.-Dark and Pretty Multi Color Irid.
- _____ **292. M-N 8 3/4" Ruffled, Stippled Good Luck Bowl-Rib Ext.-Covered in Pinks and Blues and More Pinks**
- _____ 293. P-N 9 1/8" Strawberry Plate-BW Ext.-Radium Electric Stretch-A Show Stopper!
- _____ **294. Pastel M-N 9" Nippon Plate-Scarce and in Demand**
- _____ 295. P-N 9" Nippon Plate-Very Colorful Piece
- _____ **296. Pumpkin M-N 8 3/4", Ftd. Wishbone Plate-Photos Tell The Story**
- _____ 297. P-N 8 1/4" Tri-Corner Wishbone Ftd. Plate-Very, Very Scarce Shape
- _____ **298. A-Fenton 9" Lotus and Grape Plate-Just A Gorgeous Piece Of Carnival**
- _____ 299. G-Fenton 9" Lotus and Grape Plate-Very Scarce and Nice
- _____ **300. B-Fenton 9 3/4" Round Birds and Cherries Float Bowl-Rare, Detailed and Beautiful-Should be First In Everybody's Carnival Cart!!**
- _____ 301. B-Fenton 9 1/4" Captive Rose Plate-Blue Plate Special!
- _____ 302. **Rare B-Fenton 9" Vintage Grape Plate**
- _____ 303. M-Five Lily Epergne in Victorian S.P. Frame/Setting-Wonderful and Unique



- _____ 304. **FIRST COMPLETE SET OFFERED!** Incredible Pumpkin Marigold-Riihimaki Drapery Vt. Whiskey Decanter with Stopper and Six Shot Glasses-Ole Mick Will Tell You When You've Bid Too Much!!
- _____ 305. Pink/Pale Amber Base-Riihimaki Starburst Tumbler-Pumpkin Marigold Iridescence
- _____ 306. **M-Hobstar and Shield Tumbler (European)**
- _____ 307. M-Riihimaki Starburst and Crown Tumbler-Superb iridescence-Got One of These?
- _____ 308. **M-Britt Tumbler (Karhula)-Very Rare**
- _____ 309. M-Three Diamonds (European) Tumble Up or Guest Set w/ Underplate-Complete and Wonderful
- _____ 310. **M-Sowerby Lea Open Sugar Boat-Marked w/ Rare Peacock Head Marking**
- _____ 311. Radium M-Riihimaki 5 1/2" Tall Drapery Vt. Pitcher-Beautiful
- _____ 312. **M-Inwald Jacobean Ranger 5 1/4" Tall Cologne Bottle w/ Stopper**
- _____ 313. M-Wild Berry Powder Jar w/ Lid-Rarely Seen Complete-Lid is Marked "Souvenir of Edinburg, N.Y."
- _____ 314. **Rare M-Grape and Cable Perfume Bottle w/ Stopper-Radium Blues and Pinks**
- _____ 315. B Flash-Honey Pot w/ Lid-Different
- _____ 316. **M Flash-Novelty Miniature Basket-3 1/2" Tall**
- _____ 317. Extremely Rare G-Fenton Orange Tree Hatpin Holder-Polished Feet-VERY RARELY OFFERED!
- _____ 318. **Rich M-Fenton Orange Tree Loving Cup-Factory Flaw in Handle-Great Color**
- _____ 319. Scarce P-Fenton Orange Tree Powder Jar w/ Lid-Great One
- _____ 320. **Very Rare G-Fenton Orange Tree Powder Jar w/ Lid-What A Beauty!**
- _____ 321. M-Fenton 9 1/2" Orange Tree Plate-Pinks and Blues-Clear Center
- _____ 322. **W-Fenton 9 1/2" Orange Tree Plate-Tons of Pastel Blues and Pinks**
- _____ 323. M-N Peacocks 9 1/4" Plate-Rib Ext.-Pinks Everywhere-All Time Favorite
- _____ 324. **G-N Panelled Holly Bonbon**
- _____ 325. M-Daisy and Button 3 1/2" Tall Juice Glass
- _____ 326. **RARE Lime G-N Grape and Cable Tumbler-Few Known**
- _____ 327. Ice G-Enamel Dec. Shasta Daisy Tumbler-Nice
- _____ 328. **B-Enamel Dec. Spring Festival Tumbler-Rarely Seen**
- _____ 329. M-Enamel Dec. Silver Queen Tumbler-Quality Example
- _____ 330. **Flash M-Souvenir West Bend, Wis. Fountain Tumbler**
- _____ 331. Clear-Enamel Dec. Floral Spray Tumbler-Yes, It Is Iridized-Ex. John Britt Collection
- _____ 332. **B-Enamel Dec.Chrysanthemum w/ Prism Band Tumbler-Very Nice**
- _____ 333. M-Enamel Dec. Freesia Tumbler
- _____ 334. **Cranberry Flash-5 1/4" Tall Etched and Gilt Trim Tumbler**
- _____ 335. Clear-3 1/2" Tall Enamelled Duchess Tumbler-Iridized
- _____ 336. **Red-St. Clair Holly Band Tumbler-Contemporary**
- _____ 337. B-St. Clair Inverted Fan and Feather Tumbler-Contemporary
- _____ 338. **BA-Fenton Fish Paperweight-Contemporary**
- _____ 339. B-St. Clair Wreath Cherry Cigarette Lighter-Contemporary
- _____ 340. **Red-Inverted Strawberry Wide Mouth Shot Glass-Contemporary**
- _____ 341. B-St. Clair Cactus Salt and Pepper Shakers-Contemporary
- _____ 342. **Red Amberina-Smith Glass Octagon (?) Goblets-2 x \$**

SPECIAL NOTE:

NO SUNDAY CALLS, PLEASE!

Winning Absentee Bidders will be contacted Monday through Wednesday of the week following the Auction!

Thank You!

NOTE: NEW ADDRESS

For Free Color Catalogs & Information Write:
Mickey Reichel

18350 Hunters Ridge Ct., Boonville, MO 65233-2971
or Call: 660-882-5292 days or 660-882-5283 evenings

E-mail: mreichel@awk-shn.com

**NEED QUALITY ANTIQUES AND
CARNIVAL GLASS - CALL TODAY**

*"We don't want all the Business,
Just Yours."*

WE DO AUCTIONS RIGHT!!

2004 CALENDAR

May 22 and 23, 2004

APPROX. 1500 ANTIQUE CLOCKS
AT BOONVILLE, MO AUCTION GALLERY

June 12, 2004

CARNIVAL GLASS COLLECTION AT
BOONVILLE, MO FROM IOWA COLLECTION

July 10, 2004

4TH ANNUAL EXTRAVAGANZA ANTIQUE AUCTION
AT BOONVILLE, MO AUCTION GALLERY

September 18, 2004

IMPORTANT EASTERN OHIO COLLECTION OF
HIGH QUALITY CARNIVAL GLASS
HELD AT HOLIDAY INN, WENTZVILLE, MO
SPECIAL ROOM RATE CUT-OFF 8-17-04
(636) 327-7001

October 16, 2004

AIR CAPITAL CARNIVAL GLASS CONVENTION
AT WICHITA KANSAS

WATCH WWW.AWK.SHN.COM

FOR NEW EVENTS

MICKEY REICHEL
ANTIQUÉ & AUCTION, L.C.
18350 HUNTERS RIDGE CT.
BOONVILLE, MO 65233
www.AWK-SHN.com

PRESORTED
FIRST CLASS MAIL
US POSTAGE PAID
SEDALIA, MO
PERMIT 217

RETURN SERVICE REQUESTED

FIRST CLASS MAIL
SPECIAL INVITATION TO:



13*1*****ALL FOR ADC 460

LEE MARKLEY
PO BOX 306
MENTONE, IN 46539-0306

