

BURNS

AUCTION SERVICE

Carnival Glass Auction

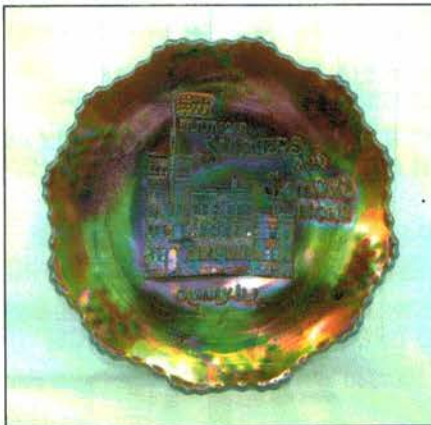
**10:00 am, Saturday,
April 3, 2004**

**(Preview Fri. 4 - 8:00 pm;
Sat. 8 - 10:00 am)**

at the

Embassy Suites - Pittsburgh
550 Cherrington Parkway,
Pittsburgh, PA 15108

(412) 269-9070 or for reservations: 1-800-362-2779
(located off Business Rte. 60 at Thorn Run Road)



We feel quite fortunate to have the opportunity to sell a portion of the collection of Ruth & John Phillips of Pensacola, Florida. This will be the first of two auctions we'll be doing for these folks; the second will be the A.C.G.A. Convention Auction later this summer. There will be a really nice selection of glass that's in pretty darn nice and desirable condition - there will be a bit of something for everyone.

Now, One Special Note: we will have 6 hours of preview time and once we sell items, they will sold 'As Is' or as listed. The preview time will be the time to check it all over - for anything from cracks to pinheads - if we know about it, it will be listed. If not, you better there to look it over because there will be NO RETURNS! We'll have people checking the glass over for the Mail Bidders and even in see a tiny, tiny pinhead - it will be disallowed. So, if ya want it, ya better show up.

The Embassy Suites of Pittsburgh (located at the Pittsburgh Airport) will host the event. From Pittsburgh off I-79, take Rte. 60 and turn on Business Rte. 60 and exit at Thorn Run Road - bear to the right and you'll see it on top of the hill. They also have a shuttle service to the airport from 5:00 am to midnight. You may call the motel direct for reservations at (412) 269-9070 or 1-800-362-2779.

From now on we will be attempting to post photos of every item on our web site - check it out. Mail, Email and phone Bids due by Thursday, April 1, 2004.

Burns Auction Service

Tom Burns
P.O. Box 608
Bath, New York 14810
(607) 776-7942 Cell: 731-9302

Bill Richards
44 Water Street, Poland OH 44514
(330) 757-2001
FAX (330) 757-4917

Bill Richards III
2253 Country Lane
Poland, OH 44514
(330) 755-2620

Mail Bids honored under the following conditions:

- No deposit required. Bidders will take full responsibility to honor any and all bids we execute for them. Payment in full plus postage and handling required after notification and before we ship any item to them.
- Items are bid on in perfect condition with average or above average iridescence OR as listed in the brochures. Bids will not be carried out when damage on an item has been found during the auction. **PEOPLE PRESENT AT THE AUCTION ARE RESPONSIBLE FOR FINDING ANY PINHEADS, WEAR, SPOTTINESS, MANUFACTURER'S DEFECTS OR ANY OTHER MINOR FLAWS, ETC.**
- Successful bidders will be notified by collect call from the auctioneer **SO BE SURE TO INCLUDE PHONE NUMBER.**
- Phone inquiries about the glass or any other questions are welcome.
- If you have some other person at the auction bidding for you, they must pay for the item before taking it.
- Any terms or conditions given the day of the auction will supersede any previously published information.
- Mail, e-mail, fax and phone bids are due by Thursday, April 1, 2004.
- There are no guarantees on AS IS or damaged items - 1 chip or a hundred - it's still damaged.

Visit our website at: <http://www.woodsland.com/burnsauction/>

- | | |
|---|---|
| <p>___ 1. Pastel Swan Master Salt - Ice Green</p> <p>___ 2. (2) N Rainbow Stemmed 6 Ruffled Compotes - Amy. (selling so much each; take 1 or 2)</p> <p>___ 3. N Paneled Holly 2 Handled 2 Sided Bon Bon - Green (sorta Radium)</p> <p>___ 4. Dugan Wreath of Roses Rose Bowl - Mari. (satiny)</p> <p>___ 5. Dugan Wreath of Roses Tri-Cornered Whimsey - Mari. (scarce; satiny)</p> <p>___ 6. Dugan Puzzle 2 Handled Flared Bon Bon - Pastel Mari. (excellent example with bright irid.)</p> <p>___ 7. DUGAN ARGONAUT SHELL NOVELTY 2 SIDED OPEN SUGAR, SIGNED SCRIPT 'NORTHWOOD' - PUR. (VERY SCARCE; HAS GREAT MULTI-COLORED IRID.)</p> <p>___ 8. DUGAN ARGONAUT NOVELTY OPEN SUGAR, SIGNED SCRIPT 'NORTHWOOD' - P. OPAL. (VERY SCARCE AND VERY DESIRABLE; GREAT COLOR AND OPAL.)</p> <p>___ 9. Dugan Argonaut Shell Novelty Creamer, not signed - P. Opal. (very scarce; nice color and opal.)</p> <p>___ 10. N CORN VASE WITH STALK BASE - ICE BLUE (VERY RARE AND VERY DESIRABLE; HAS GREAT COLOR AND AN ODD FLARE)</p> <p>___ 11. N CORN VASE WITH STALK BASE - POP BOTTLE AQUA (ACTUALLY QUITE A RARE BASE COLOR - HAVEN'T SEEN TOO MANY)</p> <p>___ 12. N CORN VASE WITH PLAIN BASE - WHITE (VERY SCARCE AND DESIRABLE; NICE IRID.)</p> <p>___ 13. N CORN VASE WITH STALK BASE - LIME ICE GREEN (RARE BASE COLOR WITH NICE IRID.)</p> <p>___ 14. N CORN VASE WITH STALK BASE - ICE GREEN (A BIT LIGHTER BASE COLOR THAN ABOVE; NICE)</p> | <p>___ 15. N CORN VASE WITH STALK BASE - SAPPHIRE AQUA (EXTREMELY RARE BASE COLOR AND REALLY NICE IRID.; A TOUGH ITEM YOU ONLY SEE AT AUCTIONS)</p> <p>___ 16. N CORN VASE WITH STALK BASE - DK. GREEN (REALLY DESIRABLE ITEM WITH GREAT COLOR AND NICE IRID.)</p> <p>___ 17. N CORN VASE WITH STALK BASE - GREEN (ANOTHER VERY DESIRABLE ITEM WITH NICE COLOR AND IRID.)</p> <p>___ 18. N CORN VASE WITH PLAIN BASE - PUR. (PROBABLY AS TOUGH A COLOR THERE IS TO FIND; NICE BRIGHT HIGH-LIGHTS)</p> <p>___ 19. N CORN VASE WITH PLAIN BASE - DK. MARI. (RARE AND VERY DESIRABLE; DARK AND NICE)</p> <p>___ 20. N CORN VASE WITH STALK BASE - SORTA PASTEL MARI. (ODD MARIGOLD TINT; LIGHT ITEM; VERY SCARCE)</p> <p>___ 21. Imperial Windmill Handled Milk Pitcher - Dk. Mari. (great color and detail)</p> <p>___ 22. Imperial Star and File Handled Creamer - Mari. (nice color and irid.)</p> <p>___ 23. 7 1/2" Tall Fenton Diamond Rib Squatty Swung Vase - Amy. (scarce size; nice satiny finish)</p> <p>___ 24. 10" Tall Fenton Diamond Rib Swung Vase - Amy. (satiny; nice)</p> <p>___ 25. 7" TALL N THIN RIB SQUATTY SWUNG VASE - ICE BLUE (RARE, DESIRABLE AND VERY ATTRACTIVE; A GREAT ITEM)</p> <p>___ 26. 6 1/2" Tall x 5 1/4" Flare N Thin Rib Squatty Flared Swung Vase - Green (scarce size; great highlights)</p> <p>___ 27. 6 1/2" Tall x 5 1/4" Flare N Thin Rib Squatty Flared Swung Vase - Dk. Green / Mari. (really nice with a dark Mari. overlay)</p> |
|---|---|

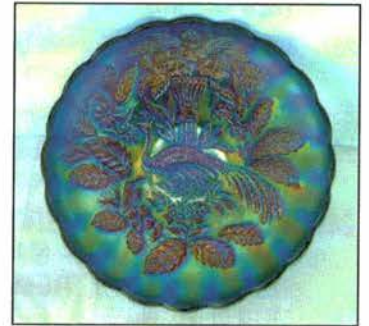
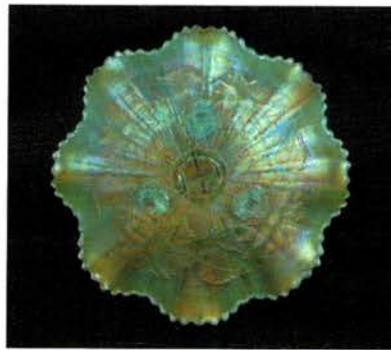
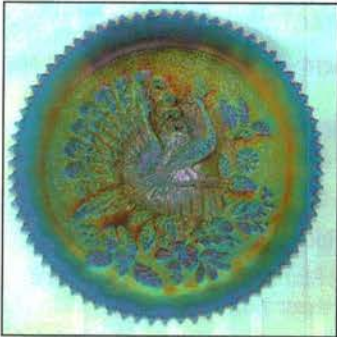
- ___28. 7 1/4" Tall N Thin Rib Squatty Swung Vase - Dk. Mari. (nice color; scarce)
- ___29. 10 1/2" Tall N Thin Rib Swung Vase - Pur. (nice color; cracked)
- ___30. 10 3/4" Tall N Thin Rib Swung Vase - Pur. (nice color and irid.)
- ___31. Pair 8 1/4 - 8 1/2" Tall x 5 1/2 - 6" Flare Imperial Parlor Panels Swung Vases - Dk. Mari. (very scarce matched set; dark, bright color and irid.)
- ___32. 12" Tall x 4" Base I.G. Ripple Mid-Size Swung Vase - Dk. Mari. (60's item with really nice color)
- ___33. 9 1/2" Tall Imperial Ripple Swung Vase - Dk. Mari. (scarce with nice color)
- ___34. Imperial Rococco Pinched In Ruffled Vase - Dk. Mari. (scarce with nice color)
- ___35. **FENTON TEN MUMS 7 PC. TANKARD WATER SET - BLUE (RARE, DESIRABLE WITH NICE WELL MATCHED COLOR AND IRID.)**
- ___36. **FENTON TEN MUMS 7 PC. TANKARD WATER SET - MARI. (ANOTHER RARE SET; PITCHER HAS REALLY NICE IRID.)**
- ___37. **FENTON TEN MUMS TUMBLER - WHITE (RARE AND DESIRABLE; FROSTY WITH HIGH IRID.)**
- ___38. Imperial 474 Lg. Size Handled Water Pitcher - Mari. (nice color; scarce size)
- ___39. Imperial 474 Tumbler - Dk. Mari. (nice dark color)
- ___40. **IMPERIAL 474 TUMBLER - PUR. (RARE COLOR; NICE IRID.)**
- ___41. Dugan Heavy Iris Tumbler - Pur. (very desirable and great irid.)
- ___42. Dugan Heavy Iris Tumbler - Amy. (satiny irid.)
- ___43. Imperial Grape Wine Decanter, Stopper and 1 Stemmed Wine - Dk. Mari. (nice color and really nice irid.)
- ___44. Fenton Fern Panels Square Crimped Edge Hat - Mari. (satiny)
- ___45. **11" TALL DUGAN PULLED LOOP SWUNG VASE - CELESTE BLUE (RARE AND VERY DESIRABLE; REALLY TOUGH BASE COLOR - TRY TO FIND ONE OF THESE)**
- ___46. **10 1/4" TALL DUGAN PULLED LOOP SWUNG VASE - BLUE (SCARCE; NICE IRID.)**
- ___47. 10 1/4" Tall Dugan Pulled Loop Swung Vase - Amy. (nice opal.)
- ___48. 8 3/4" Tall Dugan Pulled Loop Swung Vase - P. Opal. (nice opal.)
- ___49. 12 1/2" Fenton Diamond Point Columns Swung Vase - Lt. Lt. Mari. (has to be the ugliest vase I've ever seen!)
- ___50. **N PEACOCK AT THE FOUNTAIN 6 PC. RUFFLED PUNCH SET - LIME ICE GREEN (EXTREMELY RARE AND EXTREMELY DESIRABLE; TOP IS LIME GREEN WITH AN ICE GREEN BASE; CUPS VARY - REALLY TOUGH)**
- ___51. **N PEACOCK AT THE FOUNTAIN 9 PC. RUFFLED PUNCH SET - PUR. (RARE AND VERY DESIRABLE; HAS BRIGHT MULTI-COLORED IRID.; GETTING TO KNOW HOW TOUGH THESE REALLY ARE!)**
- ___52. **N PEACOCK AT THE FOUNTAIN STEMMED 6 RUFFLED COMPOTE WITH RIBBED EXTERIOR - BLUE / ELEC. BLUE (RARE AND VERY DESIRABLE WITH EXCELLENT IRID.)**
- ___53. **N PEACOCK AT THE FOUNTAIN HANDLED WATER PITCHER - ELEC. BLUE (RARE AND DESIRABLE WITH GREAT IRID.)**
- ___54. **N PEACOCK AT THE FOUNTAIN TUMBLER - ELEC. BLUE (RARE AND DESIRABLE WITH EXCELLENT IRID.)**
- ___55. **N PEACOCK AT THE FOUNTAIN TUMBLER - WHITE (RARE AND DESIRABLE; FROSTY WITH NICE IRID.)**
- ___56. N Peacock at the Fountain 7 pc. Water Set - Mari. (very scarce set with nice color and irid.)
- ___57. (6) Dugan Peacock at the Fountain Tumblers - Blue (scarce set; complete and well matched)
- ___58. (2) Fenton Vintage Grape ftd. Fern Dishes - Mari. (selling choice - one is much nicer than the other)
- ___59. European Thistle and Thorn ftd. Low Ruffled Bowl - Mari.
- ___60. **N GOOD LUCK PLATE WITH BASKETWEAVE EXT. - AMY. (VERY SCARCE AND DESIRABLE; HAS NICE BRIGHT HIGHLIGHTS)**
- ___61. **N GOOD LUCK PLATE WITH BASKETWEAVE EXT. - GREEN (VERY SCARCE; TOUGH BASE COLOR WITH A SATINY FINISH)**
- ___62. 10" Australian Thunderbird 12 Ruffled Bowl - Pur. (rare; desirable with bright irid. and nice detail)
- ___63. **IMPERIAL OPTIC 'BUTTONS' LG. HANDLED CIDER PITCHER - DK. MARI. (VERY RARE AND VERY DESIRABLE; SIGNED WITH IRON CROSS - REALLY DARK)**
- ___64. European Moonprint Pedestaled Open Sugar - Mari. (scarce)
- ___65. **N LATTICE AND POINSETTIA FTD. 8 RUFFLED BOWL WITH RIBBED EXT. - ICE BLUE (RARE AND EXTREMELY DESIRABLE; GREAT COLOR AND IRID. - TOUGH!)**
- ___66. **N LATTICE AND POINSETTIA FTD. 8 RUFFLED BOWL WITH RIBBED EXT. - BLUE (RARE AND DESIRABLE; HAS AN UNUSUAL BRONZE AND YELLOW IRID.)**
- ___67. **N LATTICE AND POINSETTIA FTD. 8 RUFFLED BOWL WITH RIBBED EXT. - PUR. (VERY SCARCE AND DESIRABLE; HAS MULTI-COLORED IRID.)**
- ___68. **N LATTICE AND POINSETTIA FTD. 8 RUFFLED BOWL WITH RIBBED EXT. - DK. MARI. (RARE AND DESIRABLE; DARK COLOR WITH NICE IRID.)**
- ___69. Dugan Constellation Stemmed 6 Ruffled Compote - White (scarce; frosty and nice)
- ___70. **N DANDELION 7 PC. TANKARD WATER SET - GREEN (RARE AND VERY DESIRABLE; GREAT BASE COLOR AND WELL MATCHED)**
- ___71. **N DANDELION 7 PC. TANKARD WATER SET - PUR. (RARE AND DESIRABLE SET; NICE COLOR AND IRID.)**
- ___72. **N DANDELION TANKARD WATER PITCHER WITH RIBBED INT. - PUR. (RARE VARIATION; NICE COLOR AND HIGHLIGHTS)**
- ___73. **N DANDELION 5 PC. TANKARD WATER SET - DK. MARI. (RARE AND DESIRABLE WITH EXCELLENT COLOR AND IRID.)**
- ___74. Fenton Enam. Cherries and Blossoms with Drape Int. 7 pc. Water Set - Blue (nice color and irid. with Interior Drape)
- ___75. **IMPERIAL LOGANBERRY VASE - GREEN (VERY SCARCE; NICE ABOVE AVERAGE COLOR AND IRID.)**

- ___ 76. N Memphis Punch Base Only - Green (tough part; great color and irid.)
- ___ 77. European Thistle and Thorn ftd. Creamer - Mari. (satiny)
- ___ 78. 8 1/2" Dugan Double Stem Rose Domed 10 Ruffled Bowl - Mari. (satiny)
- ___ 79. 6 1/4" N Wild Rose ftd. Flared Candy Dish with Smooth Rays Int. - Mari. (satiny)
- ___ 80. **N PEACOCK AT THE URN LG. ICE CREAM BOWL - ELEC. BLUE (VERY DESIRABLE ITEM WITH NICE BRIGHT IRID. AND BLUE HIGHLIGHTS)**
- ___ 81. N Peacock at the Urn All Over Stippled Ind. Ice Cream Bowl - Blue (scarce; average irid.)
- ___ 82. N Peacock at the Urn Ind. Ice Cream Bowl - Pur. (nice color and irid.)
- ___ 83. **N PEACOCKS STIPPLED PLATE WITH RIBBED EXT. AND NARROW BASE - ELEC. BLUE (RARE; HAS AN UNUSUAL BRIGHT YELLOW IRID. - REALLY DIFFERENT)**
- ___ 84. N PEACOCKS STIPPLED PLATE WITH RIBBED EXT. - BLUE (RARE AND DESIRABLE WITH NICE COLOR AND IRID.)
- ___ 85. **N PEACOCKS STIPPLED PLATE WITH RIBBED EXT. AND NARROW BASE - RENNINGER BLUE (VERY RARE AND VERY DESIRABLE; A REALLY NICE BASE COLOR WITH GREAT IRID.)**
- ___ 86. N PEACOCKS STIPPLED BOWL WITH PCE AND RIBBED EXT. - PASTEL MARI. (REALLY DIFFERENT; TOUGH TO FIND WITH FANTASTIC IRID.)
- ___ 87. **N PEACOCKS PLATE WITH RIBBED EXT. - ICE BLUE (RARE; VERY DESIRABLE ITEM WITH DARK BASE COLOR AND NICE IRID.)**
- ___ 88. N PEACOCKS PLATE WITH RIBBED EXT. - ICE GREEN (VERY SCARCE; NICE COLOR AND IRID.)
- ___ 89. N PEACOCKS PLATE WITH PLAIN EXT. - LIME ICE GREEN (RARE BASE COLOR; NICE ITEM WITH NICE IRID.)
- ___ 90. N PEACOCKS PLATE WITH RIBBED EXT. - WHITE (VERY SCARCE; FROSTY WITH BRIGHT IRID.)
- ___ 91. N PEACOCKS PLATE WITH RIBBED EXT. - GREEN (RARE AND GETTING TOUGH TO FIND; ATTRACTIVE BASE COLOR AND IRID.)
- ___ 92. N Peacocks Plate with Ribbed Ext. - Lt. Amy. (very scarce item with a lighter base color)
- ___ 93. N Peacocks Plate with Ribbed Ext. - Pur. (scarce and very desirable with a darker base color)
- ___ 94. N PEACOCKS PLATE WITH RIBBED EXT. - DK. MARI. (VERY SCARCE WITH EXCEPTIONAL COLOR AND IRID.)
- ___ 95. N PEACOCKS BOWL WITH P.C.E. AND PLAIN EXT. - WHITE (RARE AND DESIRABLE; FROSTY WITH GREAT IRID.)
- ___ 96. N PEACOCKS BOWL WITH P.C.E. AND RIBBED EXT. - LIME ICE GREEN (VERY RARE AND VERY DESIRABLE; GREAT BASE COLOR AND IRID.)
- ___ 97. N Peacocks Bowl with P.C.E. and Ribbed Ext. - Pur. (scarce with nice color and a satiny finish)
- ___ 98. **N PEACOCKS BOWL WITH P.C.E. AND BASKETWEAVE EXT. - MARI. (SCARCE VARIATION IN SHAPE AND EXTERIOR; NICE)**
- ___ 99. **N PEACOCKS 8 RUFFLED BOWL WITH RIBBED EXT. - ICE BLUE (RARE AND VERY DESIRABLE; NICE IRID.; TOUGH TO FIND)**
- ___ 100. **N PEACOCKS 8 RUFFLED BOWL WITH RIBBED EXT. - WHITE (RARE AND TOUGH TO FIND ANY MORE; NICE IRID.)**
- ___ 101. **N PEACOCKS 8 RUFFLED BOWL WITH RIBBED EXT. - GREEN (VERY RARE AND VERY DESIRABLE; A NICE ITEM)**
- ___ 102. **N PEACOCKS 8 RUFFLED BOWL WITH RIBBED EXT. - AQUA OPAL. / MARI. (RARE AND DESIRABLE; HAS BUTTERSCOTCH OVERLAY AND OPAL. ON THE TIPS)**
- ___ 103. N Peacocks 8 Ruffled Bowl with Ribbed Ext. - Mari. (scarce and desirable; nice color)
- ___ 104. **N PEACOCKS 8 RUFFLED BOWL WITH RIBBED EXT. - BLUE OPAL. (NOT CARNIVAL; HAS SUPER OPAL. - VERY DESIRABLE)**
- ___ 105. N Peacock at the Fountain Butter Lid Only - Ice Blue (tough part if ya need it; irid. is silvery)
- ___ 106. N G & C Variant Standard Size Punch Base only - Green (average irid.)
- ___ 107. **FENTON FLUFFY PEACOCK 6 PC. BULBOUS WATER SET - BLUE (VERY RARE SET TO FIND IN THIS COLOR; REALLY NICE)**
- ___ 108. **FENTON FLUFFY PEACOCK 6 PC. BULBOUS WATER SET - GREEN (ANOTHER RARE & UNDERRATED SET. NICE COLOR & WELL MATCHED)**
- ___ 109. **FENTON FLUFFY PEACOCK 7 PC BULBOUS WATER SET - AMY. (AGAIN....ANOTHER VERY TOUGH SET TO FIND IN THIS COLOR)**
- ___ 110. **FENTON FLUFFY PEACOCK 7 PC BULBOUS WATER SET - DK. MARI. (POSSIBLY AS TOUGH A COLOR AS ANY OF THEM ; REALLY NICE!)**
- ___ 111. Pair 10" tall N Florentine Style Candlesticks - Celeste Blue (impressive, well matched set - nice)
- ___ 112. Pair newer Fenton 8" Tall Florentine Candlesticks - Lt Amber (attractive)
- ___ 113. Devilbiss Style perfume Atomizer w/ Crackle Perfume Base - Mari (selling 2 items for one price, one needs a top)
- ___ 114. 6 3/4" Tall Fenton Three Diamonds & Bows Squatty Swung Vase - Blue (satiny & in great shape)
- ___ 115. **11" M'BURG WILD ROSE LAMP W/ LADIES HEAD MEDALLION - AMY. (ABSOLUTELY MY FAVORITE ITEM; RARE, RARE, RARE, RARE!)**
- ___ 116. **M'BURG COUNTRY KITCHEN COVERED BUTTER DISH - PUR. (REALLY TOUGH ITEM TO FIND IF YA NEED ONE)**
- ___ 117. **10" M'BURG SWIRL HOBNAIL SWUNG VASE - AMY. (RARE, DESIRABLE W/ A BRIGHT FINISH)**
- ___ 118. **9 1/2" M'BURG SWIRL HOBNAIL SWUNG VASE - GREEN (RARE COLOR, NICE COLOR & BRIGHT IRID.)**
- ___ 119. **M'BURG SWIRL HOBNAIL SPITTOON - MARI (REALLY , REALLY GREAT SHAPE- NICE PINCH W/ A SMALL OPENING - SUPER)**
- ___ 120. **M'BURG FEATHER HEART HANDLED WATER PITCHER - GREEN (RARE COLOR; TOUGH TO FIND; SORTA SATINY W/ NICE IRID.)**
- ___ 121. **M'BURG FEATHER & HEART HANDLED WATER PITCHER - AMY (ANOTHER RARE COLOR FOR THIS PATTERN; SATINY)**
- ___ 122. (2) M'burg Feather and Heart Tumblers - Amy. (scarce; nice; selling choice)

- ___ 123. **M'BURG FEATHER AND HEART WATER PITCHER AND 2 TUMBLERS - MARI. (SELLING PITCHER, THEN CHOICE ON TUMBLERS)**
- ___ 124. **M'BURG FEATHER AND HEART HANDLED WATER PITCHER - CRYSTAL (VERY SCARCE ITEM; PERFECT)**
- ___ 125. **M'BURG SUNFLOWER HANDLED PIN TRAY - AMY. (RARE AND DESIRABLE; PERFECT WITH NICE IRID.)**
- ___ 126. **M'BURG SUNFLOWER HANDLED PIN TRAY - GREEN (ANOTHER DESIRABLE ITEM THAT'S PERFECT AND NICE)**
- ___ 127. 6 7/8" M'burg Tulip and Scroll Squatty Flared Vase - Amy. (rare and desirable with a radium finish; open bubble on base)
- ___ 128. **7 5/8" M'BURG TULIP AND SCROLL SQUATTY FLARED VASE - MARI. (RARE COLOR FOR THIS PATTERN; NICE COLOR AND IRID.)**
- ___ 129. 8 3/4" Fenton Concord Grape 6 Ruffled Bowl - Green (very scarce; nice color and irid.)
- ___ 130. **9" FENTON CONCORD GRAPE FLARED PLATE - GREEN (VERY RARE AND VERY DESIRABLE; REALLY NICE IRID.; HAS TINY FLAKE ON MOLD LINE OF BASE)**
- ___ 131. **FENTON PANELED DANDELION 6 PC. TANKARD WATER SET - GREEN (VERY WELL MATCHED DESIRABLE SET; NICE)**
- ___ 132. **FENTON PANELED DANDELION TANKARD WATER PITCHER AND 1 TUMBLER - BLUE (REALLY ATTRACTIVE PITCHER; TUMBLER SOLD SEPARATELY)**
- ___ 133. **FENTON PANELED DANDELION 6 PC. TANKARD WATER SET - AMY. (VERY SCARCE AND ATTRACTIVE SET; REALLY NICE)**
- ___ 134. Fenton Paneled Dandelion 7 pc. Tankard Water Set - Mari. (scarce set that's quite attractive)
- ___ 135. **N IVY TOWN PUMP NOVELTY VASE - PUR. (RARE AND POPULAR NOVELTY; PERFECT WITH A NICE MULTI-COLORED IRID.)**
- ___ 136. 12 1/4" Tall x 4 5/8" Base N Tree Trunk Mid-Size Swung Vase - Pur. (scarce; nice color and satiny irid.)
- ___ 137. **10 1/4" TALL N TREE TRUNK STANDARD SWUNG VASE - ELEC. BLUE (VERY SCARCE; TOUGH TO FIND WITH NICE BLUE HIGHLIGHTS)**
- ___ 138. (2) 10 - 10 3/8" Tall N Tree Trunk Standard Swung Vases - Amy. (nice irid.; selling choice)
- ___ 139. **10 1/4" TALL N TREE TRUNK STANDARD SWUNG VASE - WHITE (VERY SCARCE; NICE FROSTY IRID.)**
- ___ 140. **9" FENTON HOLLY 8 RUFFLED BOWL - RED (RARE AND VERY DESIRABLE; GREAT RED WITH A DARKER SATINY IRID.)**
- ___ 141. **9" FENTON HOLLY 8 RUFFLED BOWL - AQUA (A REALLY TOUGH BASE COLOR AND THIS IS A NICE ONE)**
- ___ 142. 9" Fenton Holly 8 Ruffled Bowl - Mari. (nice color)
- ___ 143. 9" Fenton Holly 6 Ruffled Bowl - Blue (nice color)
- ___ 144. **FENTON HOLLY 6 RUFFLED HAT - ELEC. RED (ABSOLUTELY SUPER EXAMPLE; REALLY NICE!)**
- ___ 145. **9 1/2" FENTON HOLLY FLAT PLATE - GREEN (RARE ITEM; A REALLY NICE EXAMPLE)**
- ___ 146. **9 1/2" FENTON HOLLY FLAT PLATE - BLUE (SCARCE POPULAR ITEM; NICE COLOR)**
- ___ 147. 9 3/4" Fenton Holly Flat Plate - Dk. Mari. (really nice example; quite attractive)
- ___ 148. 6" Dugan Fishscale and Beads Deep 8 Ruffled Bowl - Mari.
- ___ 149. Dugan Cherry Wreath 7 pc. Oval Ruffled Berry Set - Dk. Pur. (complete sets are quite tough to find)
- ___ 150. **IMPERIAL HOBSTAR 6 PC. TABLE SET - PUR. (A VERY RARE AND VERY DIFFICULT SET TO FIND, LET ALONE COMPLETE!)**
- ___ 151. **8" TALL IMPERIAL RIBBED SWIRL JACK IN THE PULPIT VASE - SMOKE (VERY SCARCE AND DESIRABLE; NICE COLOR AND IRID.)**
- ___ 152. Imperial Octagon Wine Decanter and Stopper - Mari. (nice color)
- ___ 153. **IMPERIAL STRETCH DOUBLE HANDLED JACK IN THE PULPIT VASE - SMOKE (VERY SCARCE ITEM IN THIS COLOR AND SHAPE)**
- ___ 154. **N HARVEST POPPY STEMMED 6 RUFFLED COMPOTE - MARI. (RARE ITEM; NICE COLOR AND IRID.)**
- ___ 155. **N RASPBERRY TUMBLER - ICE GREEN (VERY RARE AND VERY DESIRABLE; GREAT COLOR AND AND GREAT IRID.)**
- ___ 156. **N RASPBERRY TUMBLER - ICE BLUE (ANOTHER RARE ITEM WITH NICE COLOR AND IRID.)**
- ___ 157. **N RASPBERRY 7 PC. WATER SET - PUR. (VERY SCARCE AND DESIRABLE SET; QUITE ATTRACTIVE)**
- ___ 158. N Raspberry 7 pc. Water Set - Dk. Mari. (super set with great color and irid.)
- ___ 159. **N RASPBERRY HANDLED MILK PITCHER - GREEN (VERY DESIRABLE ITEM WITH NICE COLOR AND IRID.)**
- ___ 160. **N LEAF AND BEADS FTD. ROSE BOWL WITH FLORAL INT. - SAPPHIRE (EXTREMELY RARE AND DESIRABLE VARIATION; GREAT COLOR)**
- ___ 161. **N LEAF AND BEADS FTD. ROSE BOWL WITH FLORAL INT. - ICE BLUE (ANOTHER VERY RARE VARIATION; REALLY NICE)**
- ___ 162. N Leaf and Beads ftd. Rose Bowl with Floral Int. - Green (very scarce with a nice satiny finish)
- ___ 163. N Leaf and Beads ftd. Rose Bowl with Manuf. Flat Top and Floral Int. - Pur. (very rare variation with flat top; satiny and nice)
- ___ 164. N Leaf and Beads ftd. Rose Bowl with Floral Int. - Dk. Pur. (scarce and desirable; nice bright satiny finish)
- ___ 165. **N LEAF AND BEADS FTD. FLARED NUT BOWL WITH FLORAL INT. - MARI. (REALLY NICE SHAPED ITEM WITH ATTRACTIVE PASTEL IRID. - TOUGH TO FIND!)**
- ___ 166. N Leaf and Beads ftd. Flared Nut Bowl with Floral Int. - Pur. (very scarce; satiny)
- ___ 167. N Leaf and Beads ftd. Flared Nut Bowl with Floral Int. - Dk. Mari. (another scarce item with nice irid.)
- ___ 168. Dugan Leaf Ray Handled Nappy - Amy. (fair irid.)
- ___ 169. 5 1/2" Fenton Lotus and Poinsettia ftd. 6 Ruffled Sauce - Mari. (satiny)
- ___ 170. **N ORIENTAL POPPY 7 PC. TANKARD WATER SET - GREEN (RARE AND DESIRABLE SET IN THIS COLOR; NICE)**
- ___ 171. **N ORIENTAL POPPY 7 PC. TANKARD WATER SET - PUR. (RARE AND VERY POPULAR; NICE, WELL MATCHED SET)**

- ___ 172. **N ORIENTAL POPPY TANKARD WATER PITCHER - DK. MARI. (SUPER COLOR AND IRID.; UNDERPRICED)**
- ___ 173. (2) N Oriental Poppy Tumblers - Dk. Mari. (really nice; selling choice)
- ___ 174. Fenton Holly Stemmed 6 Ruffled Compote - Mari.
- ___ 175. **FENTON HOLLY STEMMED 6 RUFFLED COMPOTE - RED (OPAL.) (RARE AND VERY DESIRABLE; HAS SLAG EFFECT AND A HINT OF OPAL. ON THE EDGE)**
- ___ 176. Fenton Holly Stemmed 6 Ruffled Compote - Green (very scarce and desirable)
- ___ 177. Fenton Holly Stemmed 2 Sided Compote - Mari. (nice shape)
- ___ 178. Fenton Holly Stemmed Flared 6 Ruffled Compote - Mari. (satiny)
- ___ 179. **M'BURG DIAMOND 5 PC. WATER SET - GREEN (VERY SCARCE AND DESIRABLE SET; WELL MATCHED)**
- ___ 180. **FENTON ORANGE TREE SCROLL TANKARD WATER PITCHER - BLUE (VERY RARE AND VERY DESIRABLE; HAS ALWAYS BEEN ONE OF MY FAVORITE CARNIVAL PIECES)**
- ___ 181. **6 1/2" TALL FENTON RUSTIC 'SWEET PEA' SQUATTY FLARED VASE - WHITE (QUITE A DESIRABLE ITEM; FROSTY WITH GREAT IRID.)**
- ___ 182. 9 1/2" Tall Fenton Rustic Standard Swung Vase - Green (has bright satiny irid.)
- ___ 183. 15 - 15 1/2" Tall Fenton Rustic Mid-Size Swung Vase - Dk. Mari. (nice dark color with a bright satiny finish)
- ___ 184. 14 3/4" Tall Fenton Rustic Mid-Size Swung Vase with Tight Crimped Edge - Dk. Mari. (attractive shape with dark color; nice)
- ___ 185. **DUGAN STORK IN THE RUSHES HANDLED WATER PITCHER - AMY. (A VERY RARE COLOR FOR THIS PATTERN)**
- ___ 186. **MAKER(?) BUZZ SAW AND FILE TALL WATER PITCHER - DK. MARI. (REALLY TOUGH ITEM; EUROPEAN OR CAMBRIDGE?)**
- ___ 187. (2) Buzz Saw and File Tall Lemonade Glasses - Dk. Mari. (selling choice; really nice color and irid.)
- ___ 188. **(6) MAKER(?) BUZZ SAW AND FILE STEMMED GOBLETs - DK. MARI. (SELLING SO MUCH EACH FOR THE SET; QUITE RARE)**
- ___ 189. Dugan Vintage Grape (Golden Harvest) Stemmed Wine - Mari.
- ___ 190. **N DAISY AND DRAPE FTD. FLARED VASE - AQUA OPAL. (RARE AND DESIRABLE; NICE COLOR AND OPAL.)**
- ___ 191. **FENTON BUTTERFLY AND FERN 5 PC. BULBOUS WATER SET - BLUE (A VERY ATTRACTIVE SET; NICE IRID. AND WELL MATCHED)**
- ___ 192. **FENTON BUTTERFLY AND FERN 6 PC. BULBOUS WATER SET - GREEN (ANOTHER ATTRACTIVE SET; NICE IRID. AND WELL MATCHED)**
- ___ 193. **FENTON BUTTERFLY AND FERN 7 PC. BULBOUS WATER SET - MARI. (TOUGH TO FIND COMPLETE; WELL MATCHED)**
- ___ 194. Westmoreland Corinth Jack in the Pulpit Vase - Amy. (average irid.)
- ___ 195. **10 1/2" TALL FENTON PLUME PANELS SWUNG VASE - RED (RARE AND EXTREMELY DESIRABLE; ABOVE AVERAGE COLOR AND VERY ATTRACTIVE)**
- ___ 196. 12 1/4" Tall Fenton Plume Panels Swung Vase - Green (really nice example and sorta tough to find)
- ___ 197. 12 1/2" Tall Fenton Plume Panels Swung Vase - Amy. (nice color and irid.)
- ___ 198. 10 1/4" Tall Dugan Lined Lattice Swung Vase - White (scarce; frosty with really nice irid.)
- ___ 199. 9 3/4" Tall Dugan Lined Lattice Swung Vase - Pur. (unusual in that this example is satiny)
- ___ 200. **FENTON FTD. ORANGE TREE COVERED BUTTER DISH - WHITE (AN ABSOLUTELY WONDERFUL EXAMPLE OF A VERY RARE ITEM)**
- ___ 201. **FENTON FTD. ORANGE TREE 6 PC. TABLE SET - BLUE (COMPLETE AND IN PRETTY DARN NICE SHAPE)**
- ___ 202. 1908 St. Paul, Minn. Shriners Champagne Glass - Ruby Flash (nice decor.)
- ___ 203. 1910 New Orleans Shriners Champagne Glass - Clear (scarce)
- ___ 204. 1911 Rochester, NY Shriners Champagne Glass - Clear (scarce)
- ___ 205. **N G & C 6 PC. RUFFLED STANDARD PUNCH SET - GREEN (THIS BOWL AND BASE ARE SUPER AND REALLY TOUGH TO FIND)**
- ___ 206. N G & C Lg. Covered Compote - Pur. (popular desirable item)
- ___ 207. (2) N G & C Covered Sweetmeat Compotes - Pur. (nice items; selling choice)
- ___ 208. N G & C Covered Sweetmeat Compote - Pur. (really nice; also unusual with extra gloss around base rim)
- ___ 209. N G & C Sweetmeat Whimsey Base - Pur. (very scarce; nice satiny finish)
- ___ 210. **N G & C COVERED TOBACCO JAR - PUR. (RARE AND VERY DESIRABLE; TOUGH TO FIND AND HAS NICE COLOR AND IRID.)**
- ___ 211. **N G & C 6 PC. TANKARD WATER SET - PUR. (RARE WITH NICE SATINY IRID.)**
- ___ 212. N G & C Water Pitcher and 1 Tumbler - Green (very scarce color; satiny)
- ___ 213. N G & C 7 pc. Water Set - Pur. (popular set with nice color and irid.)
- ___ 214. **N G & C 7 PC. WATER SET - DK. MARI. (A SUPER, SUPER SET - ESP. THE PITCHER)**
- ___ 215. **N G & C CUP AND SAUCER - WHITE (RARE SET; FROSTY AND TOUGH TO FIND)**
- ___ 216. (2) N G & C Cups and Saucers - Pur. (selling choice; nice satiny finish)
- ___ 217. 9 1/4" N G & C Plate with Basketweave Ext. - Pur. (really nice example with bright highlights)
- ___ 218. 8" N G & C Handgrip Plate with Basketweave Ext. - Mari. (scarce shape with a nice satiny finish)
- ___ 219. N G & C 6 Ruffled Hat from Tumbler - Mari. (satiny; bright)
- ___ 220. **N G & C STIPPLED TUMBLER - PUR. (RARE VARIATION; NICE DARK COLOR)**
- ___ 221. **N G & C STIPPLED TUMBLER - MARI. (ANOTHER RARE VARIATION WITH NICE COLOR)**
- ___ 222. N G & C Flat Handled Nappy from Punch Cup - Mari. (scarce)
- ___ 223. **FLYING BAT HATPIN - DARK (VERY DESIRABLE; NICE IRID.)**

224. Cattail (Six Plums) Hatpin - Dark (scarce)
225. Triplet Hatpin - Dark (nice irid.)
226. Swirled Turban Hatpin - Dark (scarce)
227. Tufted Pillow Hatpin - Dark (nice irid.)
228. Big Butterfly (or Scarab) Hatpin - Dark
229. Big Butterfly (or Scarab) Hatpin - Dark
230. Coolie Hatpin - Dark
231. Moire Beetle Hatpin - Dark
232. Bee and Honeycomb Hatpin - Crystal Blue (not iridized)
233. Bee and Honeycomb Hatpin - Crystal Amber (not iridized)
234. Bee and Honeycomb Hatpin - Crystal Green (not iridized)
235. **N PEACH 7 PC. WATER SET - CRYSTAL GREEN WITH GOLD DECOR. (REALLY DESIRABLE SET WITH EXCELLENT GOLD DECORATION; NOT CARNIVAL)**
236. **N GRAPE AND GOTHIC ARCHES COVERED BUTTER DISH - ELEC. BLUE (SUPER IRID. ON A VERY DIFFICULT ITEM TO FIND)**
237. 9 5/8" N Fruit and Flowers Lg. 8 Ruffled Bowl with Basketweave Ext. - Mari. (satiny)
238. Fenton Strawberry 2 Handled 4 Sided Bon Bon - Mari.
239. 8 1/4" Fenton Holly Ice Cream Shaped Bowl - Depression Green (scarce; not Carnival)
240. **FENTON STRAWBERRY SCROLL BULBOUS WATER PITCHER - MARI. (VERY RARE AND DESIRABLE; EXTREMELY DIFFICULT ITEM TO PURCHASE)**
241. (2) Fenton Stream of Hearts Stemmed 6 Ruffled Compotes - Dk. Mari. (selling choice; satiny)
242. **FENTON LATTICE AND GRAPE 5 PC. TANKARD WATER SET - BLUE (RARE SET; PITCHER IS VERY ATTRACTIVE)**
243. Fenton Lattice and Grape 6 pc. Tankard Water Set - Dk. Mari. (really nice and attractive set)
244. 7 3/4" Fenton Thistle Round Bowl with Tight Crimped Edge - Mari.
245. **DUGAN VINEYARD BULBOUS WATER PITCHER - P. OPAL. (VERY RARE AND EXTREMELY DESIRABLE ITEM WITH GREAT OPAL.)**
246. **DUGAN RAMBLER ROSE 7 PC. BULBOUS WATER SET - AMY. (A VERY DIFFICULT SET TO LOCATE; REALLY NICE COLOR AND IRID.)**
247. **7" DUGAN HOLLY WHIRL LOW 10 RUFFLED BOWL - PUR. (SUPER IRID. WITH BRIGHT BLUE AND GOLD IRID. IN A NEAT SHAPE)**
248. Dugan S Repeat Handled Punch Cup - Pur. (nice irid.)
249. **7 1/4" M'BURG HOLLY SPRIG VARIANT ICE CREAM SHAPED BOWL - MARI. (SUPER RADIUM FINISH IN A GREAT ICE CREAM SHAPE)**
250. **11" FENTON KNOTTED BEADS SWUNG VASE WITH TIGHT CRIMPED EDGE - AMBER (A VERY RARE BASE COLOR; VERY FEW EVER SOLD)**
251. 9 1/2" Fenton Knotted Beads Swung Vase with Tight Crimped Edge - Blue (scarce and a very attractive example)
252. 8 1/4" Fenton Knotted Beads Swung Vase with Tight Crimped Edge - Mari. (nice color)
253. 10 3/4" Tall Fenton Knotted Beads Swung Vase - Blue (really attractive item)
254. 9 3/4" Tall Fenton Knotted Beads Swung Vase - Blue (another nice example)
255. **N GRAPE ARBOR TANKARD WATER PITCHER - ICE BLUE (VERY RARE, VERY DESIRABLE; PERFECT WITH GREAT FROSTY IRID.)**
256. **N GRAPE ARBOR TUMBLER - DK. ICE BLUE (DARK BASE COLOR VARIATION; NICE IRID.)**
257. **N GRAPE ARBOR TANKARD WATER PITCHER - AMY. (RARE AND VERY ATTRACTIVE; NICE)**
258. (3) N Grape Arbor Tumblers - Pur. (selling choice; nice color and irid.)
259. **N GRAPE ARBOR TANKARD WATER PITCHER - DK. MARI. (SUPER COLOR AND IRID.; REALLY NICE)**
260. N Grape Arbor Tumbler - Dk. Mari. (super irid.)
261. 7 1/2" Imperial Hobstar Round Flared Bowl - Mari.
262. 6" Tall x 7" Wide Imperial Star and File Stemmed Round Compote - Pastel Mari. (super irid.)
263. Pair 7" Tall Imperial 6 Paneled Candlesticks - Smoke (scarce set with super irid.)
264. 5 1/4" Signed Imperial (Iron Cross) Jewels Turned In Round Vase - Amy. (neat shape - nice signature)
265. **FENTON ILLINOIS SOLDIERS AND SAILORS HOME - QUINCEY, ILL. FLAT PLATE - BLUE (VERY RARE AND VERY DESIRABLE; SUPER TOUGH WITH NICE COLOR AND IRID.)**
266. **9" N STRETCH MELON RIBBED SWIRL VASE - CELESTE BLUE (RARE AND VERY DESIRABLE NORTHWOOD ITEM; HAS GREAT COLOR)**
267. 5" Tall x 9 1/4" Diameter N Stretch Ice Cream Shaped Compote with Tree of Life Base - Celeste Blue (scarce; nice color and irid.)
268. **N SINGING BIRD HANDLED WATER PITCHER - PUR. (VERY SCARCE AND DESIRABLE; NICE AVERAGE IRID.)**
269. N Singing Bird Tumbler - Pur. (scarce; nice)
270. 9 1/4" Tall Brockwitz Sunflower and Diamond Cylinder Vase - Dk. Mari. (nice dark color)
271. **11 1/2" DUGAN SPIRALX SWUNG VASE - AMY. (REALLY ATTRACTIVE; LIGHT BASE COLOR WITH BRIGHT IRID.)**
272. 13 1/4" Dugan Spiralx Swung Vase - Mari. / Clear (tall example)
273. 12 1/4" Dugan Target Swung Vase - P. Opal. (nice opal.)
274. 2 1/4 - 1/2" Tall Westmoreland Pastel Jack in the Pulpit Hat Toothpick - Mari.
275. Imperial Star and File Wine Decanter and Stopper - Dk. Mari. (super color; an under rated item)
276. 9 1/4" Westmoreland Corinth Swung Vase - Teal
277. 9 1/4" Westmoreland Corinth Swung Vase - Amy.
278. Signed Fenton Drapery ftd. 6 Ruffled Crimped Edge Bowl - Lt. Aqua Opal.
279. (6) I.G. Grape Stemmed Wine Glasses - Smoke (selling as a set)
280. Misc. Damaged Items



Burns Auction Service
 P.O. Box 608
 Bath, New York 14810

First Class
 US Postage
PAID
 Permit No. 7
 Hammondsport, NY



LEE MARKLEY
 BOX 306
 MENTONE IN 46539

46539-0306