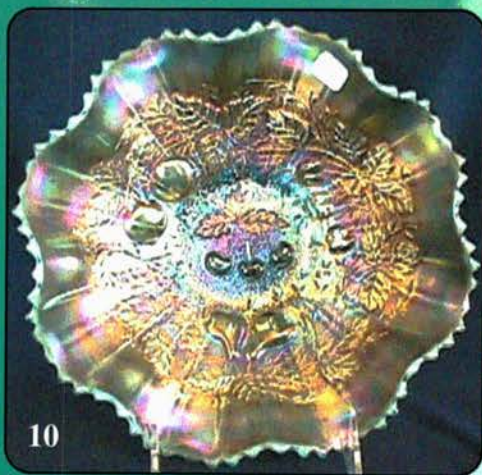


AUCTION

*San Diego/Southern California
Carnival Glass Convention*



Saturday, March 6th, 2004 -- 9:30 A.M.



**Ayers Suites
1945 E. Holt Blvd.
Ontario, California 91764
Call (909)390-7778 for reservations**

Jim and Jan Seeck

Seeck Auctions

641-424-1116

SATURDAY, MARCH 6th, 2004 --9:30 a.m.

Ayers Suites -- Ontario, California

NO BUYER'S PREMIUM

OPEN TO THE PUBLIC

**Don't forget to check out our website for lots of color pictures. www.seeckauction.com
Also, please email us and we will put you on our email mailing list for auction notices.**

Seeck Auctions is pleased to bring some fantastic Carnival Glass to the San Diego/Southern California Convention. The glass in this auction is from the Ken and Bev Osbon collection from Oregon plus other consignors. Not quite as large as our usual auction, but piece after piece is high quality and tough to find. Hope you enjoy the sale!

This is the 10th Annual Convention the San Diego County and Southern California Carnival Glass clubs have hosted. Congratulations on 10 great years of Carnival Glass! They have done a fine job and we are happy to continue to bring fine glass to their conventions and hope to continue until their 20th Convention (Gannon will be in college, AH!!)

Call the Hotel direct for room reservations: 909-390-7778. \$89.00/night/suite/special rate.

San Diego / Southern Calif. Convention info: Contact Betty Robertson at 805-482-3473.

Terms: Cash or Check with proper I.D. ** Sales Tax will be charged, please bring your tax-exempt numbers.

Visit the San Diego Carnival Glass Club Website: <http://members.aol.com/sdccgcc/sandiego.htm>

***** ABSENTEE BID POLICY

1. Write-in bids will be accepted by sending the numbers of the item(s) desired and the amount bid on each to:
Seeck Auctions, PO Box 377, Mason City, Iowa 50402.
2. If known by Auction Company, bids may be done over the telephone. (641)424-1116.
3. You may **email** your bids to us: **jimjan@seeckauction.com** Continue to include the numbers of the item(s) you would like to bid on and amount bid on each, please include your telephone number.
4. There is a \$5 handling charge for each successful bid. Shipping and insurance charges are additional.
5. Bidders will be notified by phone if their bid(s) are successful. This call will be made 1 - 3 days after the auction.
6. Please have all bids in by **Thurs., Mar. 4th.** All bids (by mail, phone or **email**) after this date may not be carried out.
7. Please place bids in the following increments: \$1 to \$300 - \$5 increments \$300 up - \$25 increments.
8. **If you do not receive an item that sold for less than your bid, assume we cancelled your bid because the piece of glass had below average color, manufacture problem, damage or was not listed correctly.**
9. Auction results are posted on our website within 5 days of the auction (depending on drive time home from the sale.) Also results are available in many of the club newsletters.

- *****
- | | |
|---|--|
| <input type="checkbox"/> 1. Pansy handled nappy - green | <input type="checkbox"/> 13. Holly 9" plate - amethyst - super pretty example, scarce |
| <input type="checkbox"/> 2. Stippled Rays 10" ruffled bowl w/brides basket holder - marigold | <input type="checkbox"/> 14. Holly 9" plate - white - very pretty |
| <input type="checkbox"/> 3. Holly & Berry handled nappy - peach opal | <input type="checkbox"/> 15. Caroline hldd basket - peach opal - scarce |
| <input type="checkbox"/> 4. Leaf Chain 7" ruffled bowl - marigold | <input type="checkbox"/> 16. Poppy Show ruffled bowl - ice green - very pretty & rare, highly desirable |
| <input type="checkbox"/> 5. Stippled Rays 6" plate - marigold | <input type="checkbox"/> 17. Poppy Show ruffled bowl - marigold - very pretty & scarce |
| <input type="checkbox"/> 6. Diamond's Spindle candlesticks - ice green - sold as pair | <input type="checkbox"/> 18. Dragon & Lotus collar based ruffled bowl - lime green opal - very nice example, minor pinpoint on point |
| <input type="checkbox"/> 7. Ribbed Stretch glass rosebowl - white - interesting | <input type="checkbox"/> 19. Dragon & Lotus collar based ruffled bowl - amber - scarce color |
| <input type="checkbox"/> 8. Three Fruits dome ftd ruffled bowl - green | <input type="checkbox"/> 20. Dragon & Lotus collar based ruffled bowls (2) - green - choice |
| <input type="checkbox"/> 9. Footed Prism Paneled 9 1/2" vases (2) - marigold - choice | <input type="checkbox"/> 21. Vintage 7" plate - amethyst - very nice |
| <input type="checkbox"/> 10. Stippled Three Fruits collar based ruffled bowl w/ribbed back - aqua opal - super pretty & very scarce | <input type="checkbox"/> 22. Vintage 7" plate - blue - scarce |
| <input type="checkbox"/> 11. Stippled Three Fruits collar based ruffled bowl w/ribbed back - marigold - dark & super | <input type="checkbox"/> 23. Grape & Cable cracker jar - marigold - nice, has minor pinpoint on the top rim of base |
| <input type="checkbox"/> 12. Puzzle bon bon - purple | |

- ___ 24. Grape & Cable Variant PCE bowl w/BW back - marigold
- ___ **25. Oriental Poppy tankard water pitcher - sapphire - more like an ice sapphire, has pastel irid., extremely rare item, very pretty & highly desirable**
- ___ 26. Oriental Poppy tumbler - ice blue - scarce
- ___ **27. Oriental Poppy tankard water pitcher - purple - super pretty & very scarce**
- ___ 28. Oriental Poppy tumbler - purple - nice
- ___ 29. Pastel Swan salt - ice green
- ___ **30. Two Flowers spt ftd 9" plate - marigold - super example, as nice as I have seen this rare plate**
- ___ 31. Ribbon Tie 3 in 1 edge bowl - blue - pretty
- ___ 32. Orange Tree w/Trunk 9" plate - marigold - pastel, pretty
- ___ 33. Orange tree w/Trunk 9" plate - white - pretty
- ___ 34. Bird & Grape wall pockets (2) - marigold - choice
- ___ **35. Holly ruffled bowl - red - very scarce & nice, amberina base**
- ___ 36. Fenton's Peacock at Urn eight ruffled bowls (2) - green - both are nice, choice
- ___ 37. Fenton's Peacock at Urn 6 ruffled bowl - white - pretty
- ___ 38. Fenton's Peacock at Urn 8 ruffled bowl - blue
- ___ 39. Fenton's Peacock at Urn 8 ruffled bowls (2) - marigold - choice
- ___ **40. Fruits & Flowers bon bon - ice blue - highly desirable piece, pretty, scarce**
- ___ 41. Fruits & Flowers bon bon - green
- ___ 42. Heavy Grape 8" plate - purple - nice
- ___ 43. Heavy Grape 8" plate - marigold - nice
- ___ **44. Hearts & Flowers PCE bowl w/ribbed back - marigold - scarce**
- ___ **45. Stippled Good Luck ruffled bowl w/ribbed back - blue - super pretty stretch irid.**
- ___ 46. Stippled Good Luck ruffled bowl w/ribbed back - marigold - very nice
- ___ 47. Grape & Cable 4 pc. table set - purple - nice set, complete
- ___ 48. Four Pillars 10" vases (2) - aqua opal - choice, both have typical toe nicks
- ___ 49. Stretch Glass 5" rolled over vase - celest blue - 9" wide
- ___ **50. Peacock at the Fountain punch bowl & base - ice green - super pretty irid. on the extremely rare & desirable set, fantastic**
- ___ 51. Fenton's Stretch Glass #635 covered candy jar - celest blue
- ___ **52. Enameled Forget Me Nots Three band tankard water pitcher - blue - very scarce pitcher**
- ___ **53. Peacocks ruffled bowl w/ribbed back - aqua opal - pastel & nice, great opal**
- ___ **54. Peacocks ruffled bowl w/ribbed back - green - very rare, super**
- ___ 55. Nautilus whimsey creamer - peach opal
- ___ 56. Floral & Optic ftd round bowl - red - stretchy & pretty
- ___ **57. Grape & Cable ruffled compote - purple - very pretty example, scarce**
- ___ 58. Strawberry 9" plate w/BW back - green - nice
- ___ 59. Strawberry 9" plate w/plain back - purple - super
- ___ **60. Orange Tree hatpin holder - white - extremely rare color, super irid. is great & feet look really good**
- ___ 61. Seaweed 10" 3 in 1 edge bowl - green - satin, has chip on edge
- ___ **62. Captive Rose 9" plate - green - fantastic example of this rare plate**
- ___ 63. Captive Rose 9" plate - blue - very nice, scarce
- ___ **64. Stippled Three Fruits spt ftd ruffled bowl - aqua opal - very pretty & scarce**
- ___ **65. Three Fruits spt ftd ruffled bowl - lime green - super example, very rare**
- ___ **66. Stippled Three Fruits spt ftd ruffled bowl - reninger blue - very pretty, rare**
- ___ 67. Thistle ruffled bowl - aqua - very scarce color, nice
- ___ 68. Thistle ruffled bowl - green
- ___ 69. Petals ruffled compote - purple - super pretty
- ___ 70. Petals ruffled compote - green - very pretty example
- ___ **71. Rose Show ruffled bowl - aqua opal - scarce & nice, light butterscotch irid.**
- ___ 72. Rose Show ruffled bowl - marigold - nice, scarce
- ___ 73. Maple Leaf water pitcher - marigold - fantastic example, as nice as I've seen
- ___ 74. Daisy Wreath ruffled bowl - marigold on milk glass
- ___ **75. Stippled Three Fruits 9" plate w/ribbed back - aqua opal - super pretty pastel example, great opal & rare**
- ___ **76. Stippled Three Fruits 9" plate w/ribbed back - lavender - very scarce color**
- ___ 77. Stippled Three Fruits 9" plate w/ribbed exterior - purple - nice

- ___ 78. N's Poppy ruffled pickle dish - ice blue - very pretty & very rare
- ___ 79. N's Poppy pickle dish - purple - super super pretty, borderline lavender
- ___ 80. Fenton's Peacock at Urn 9" plate - blue - very pretty, highly desirable
- ___ 81. Fenton's Peacock at Urn 9" plate - white - very nice irid., scarce
- ___ 82. Fenton's Peacock at Urn 9" plate - marigold - dark & nice
- ___ 83. Fenton's Peacock & Grape IC shaped bowl - red - very rare & nice, amberina base
- ___ 84. Paneled Dandelion tankard water pitcher - blue - very nice, very scarce
- ___ 85. Paneled Dandelion tumbler - blue
- ___ 86. Peacocks PCE bowl w/ribbed back - lavender - super super irid., very rare
- ___ 87. Peacocks PCE bowl w/ribbed back - purple - very nice & scarce
- ___ 88. Hearts & Flowers ruffled compote - marigold - dark & super, irid. is fantastic, epoxy spot on base
- ___ 89. Grape & Cable 9" plate w/BW back - horehound, olive green - you buy it you call what color it is, super irid.
- ___ 90. Grape & Cable Variant 9" plate w/BW back - marigold
- ___ 91. Hearts & Flowers ruffled bowl w/ribbed back - ice green - very scarce & nice
- ___ 92. Hearts & Flowers ruffled bowl w/ribbed back - purple - fantastic example
- ___ 93. Windmill deep round bowl - marigold on moonstone - super rare & pretty
- ___ 94. Good Luck PCE bowl w/ribbed back - pastel marigold - super irid. on this scarce color
- ___ 95. Good Luck PCE bowl w/ribbed back - blue - super electric irid.
- ___ 96. Good Luck PCE bowl w/BW back - green - scarce
- ___ 97. Stippled Rays IC sauce - red - chip on edge
- ___ 98. Fern Brand Chocolates handgrip plate - amethyst - very scarce & desirable
- ___ 99. Stretch glass Dolphins round compote - velva rose (pink) - scarce
- ___ 100. Grape & Cable 14 pc. master punch set - purple - fantastic set & very rare, a collector's classic
- ___ 101. Field Thistle 6" plate - marigold - scarce
- ___ 102. Dragon & Lotus IC shaped bowl - red - has dark irid., rare
- ___ 103. Dragon & Lotus IC shaped bowl - green - very pretty
- ___ 104. Dragon & Lotus IC shaped bowl - blue
- ___ 105. Fanciful 9" plate - purple - fantastic irid. on scarce & highly desirable plate
- ___ 106. Fanciful 9" plate - blue - fantastic example, extremely flat, one of the best blue ones I've seen
- ___ 107. Basketweave Open Edge large size ruffled basket - ice green - nice
- ___ 108. Vintage 6" plate - marigold - scarce, nice
- ___ 109. Horse Medallion ftd ruffled bowl - amethyst - super pretty & scarce
- ___ 110. Peacock lamp - red - super rare & highly desirable
- ___ 111. Peacock lamp - purple - rarest color, highly desirable
- ___ 112. Grape & Cable banana boat - green - very nice, chip on edge
- ___ 113. Grape & Cable banana boat - purple - nice
- ___ 114. Grape & Cable banana boat - marigold
- ___ 115. M'burg Wild Rose 10" kerosene lamp - green - super rare & nice, minor pinpoint on underside of inner rim of base, 6 1/4" base
- ___ 116. Kittens plate - marigold - nice
- ___ 117. Kittens plate - amethyst - scarce color
- ___ 118. Orange Tree loving cup - green - super nice & a scarce color
- ___ 119. Orange Tree loving cup - blue - very pretty example
- ___ 120. Stippled Grape & Cable humidor - purple - very rare, minor pinpoint on base top edge, lid not stippled
- ___ 121. Stippled Grape & Cable humidor - super pretty & very rare, both lid & base stippled
- ___ 122. N's Bushel basket - lavender - super pretty irid., scarce
- ___ 123. N's Bushel basket - ice green - very scarce
- ___ 124. N's bushel Basket - amethyst - nice
- ___ 125. Stippled Grape & Cable PCE bowl w/ribbed back - aqua opal - super pretty butterscotch irid. on this very rare bowl
- ___ 126. Stippled Grape & Cable PCE bowl w/ribbed back - ice blue - very rare & pretty
- ___ 127. Grape & Cable bon bon - white - pretty, scarce
- ___ 128. Grape & Cable bon bon - blue - electric, nice
- ___ 129. Grape & Cable bon bon - green - scarce
- ___ 130. Grape & Cable bon bon - purple - nice
- ___ 131. Grape & Cable bon bon - marigold - pretty
- ___ 132. Singing Birds mug - aqua opal - very rare & highly desirable, nice

- ___ 133. **Singing Birds mug - ice blue - very hard to find, pretty**
- ___ 134. Singing Birds mug - sapphire - extremely rare color, super, has crack in base
- ___ 135. Heart & Vine 9" plate - blue - very scarce plate plus nice
- ___ 136. Persian Garden 6" plate - white - has Pool of Pearls exterior
- ___ 137. Four Flowers 6" plate - peach opal
- ___ 138. **Vintage 9" IC shaped bowl - red - very rare bowl, silver & gold irid.**
- ___ 139. Kittens 4 sides up dish - powder blue - looks amethyst
- ___ 140. **N's Lattice & Poinsettia ftd ruffled bowl - blue - very pretty, has nice electric highlights**
- ___ 141. Singing Birds 5 pc. berry set - green - very hard to find set, nice
- ___ 142. Wild Strawberry 10" ruffled bowl w/BW back - white - very scarce color, pretty
- ___ 143. Holly 3 in 1 edge bowl - blue
- ___ 144. Stork & Rushes butterdish - marigold - hard to find
- ___ 145. **N's Wide Panel Epergne - green - typical minor spots on edge were large lily sets, very pretty, highly desirable**
- ___ 146. Dragon & Lotus 3 in 1 edge bowl - marigold
- ___ 147. Stippled Grape & Cable Variant 9" plate - green - very pretty, rare
- ___ 148. Orange Tree ruffled compote - aqua - call it sapphire if it were Northwood, rare
- ___ 149. Fishscale & Beads crimped edge 7" plate - peach opal - nice
- ___ 150. **Embroidered Mums ruffled bowl w/ribbed back - aqua opal - super rare item, lots of opal, a little light on irid.**
- ___ 151. Embroidered Mums ruffled bowl w/ribbed exterior - blue - scarce & desirable
- ___ 152. Embroidered Mums ruffled bowl w/ribbed back - purple - scarce
- ___ 153. **Waterlily ftd ruffled sauce - reverse amberina opal - extremely rare color for these, super hard to find**
- ___ 154. Waterlily ftd ruffled sauce - red - cherry color, has nick on edge
- ___ 155. Waterlily ftd ruffled sauce - powder blue - scarce color - nice
- ___ 156. Waterlily ftd ruffled sauce - green - scarce color
- ___ 157. Waterlily ftd ruffled sauce - vaseline - nice
- ___ 158. Waterlily ftd ruffled sauce - pastel marigold
- ___ 159. Waterlily ftd ruffled sauce - blue
- ___ 160. Waterlily ftd ruffled sauce - marigold
- ___ 161. **N's Peacock at the Fountain ruffled compote - blue - super pretty example w/electric highlights, very scarce**
- ___ 162. Leaf Chain 9" plate - white - scarce
- ___ 163. **Drapery rosebowl - ice blue - rare & nice, not many around**
- ___ 164. **N's Peacock at Urn IC sauce - ice green - very nice & scarce**
- ___ 165. N's Peacock at Urn IC sauce - ice blue - hard to get
- ___ 166. N's Peacock at Urn IC sauce - white - nice
- ___ 167. N's Peacock at Urn IC sauce - blue - pretty
- ___ 168. N's Peacock at Urn IC sauce - purple - super
- ___ 169. N's Peacock at Urn IC sauce - marigold - nice
- ___ 170. Sailboat 6" plate - blue - very rare little plate, nice
- ___ 171. **Grape & Cable small size punch bowl & base - marigold - super example, & quite scarce**
- ___ 172. Honeycomb rosebowl - peach opal - very nice
- ___ 173. **Peacock & Grape spt ftd ruffled bowl - red - very rare & pretty, amberina feet**
- ___ 174. Stretch Glass candlestick vases (2) - celest blue - sold as pair
- ___ 175. **Vintage ruffled bowl - aqua opal - super pretty for this very rare piece, nice color & iridescence**
- ___ 176. **Vintage ruffled bowl - Persian blue - very rare color, as nice as I've seen**
- ___ 177. M'burg Strawberry Wreath ruffled compote - marigold - radium, nice
- ___ 178. **Enameled Dianthus 7 pc. tankard water set - white - very rare set, nice**
- ___ 179. Cosmos & Cane 7" ruffled bowl w/Headdress interior - honey amber - very pretty
- ___ 180. **Grape & Cable spt ftd 9" plate - ice green - pretty irid. on a very scarce plate**
- ___ 181. **Leaf & Beads rosebowl - ice green - super pretty & very, very rare**
- ___ 182. Leaf & Beads rosebowl - aqua opal - fantastic butterscotch example, nice opal
- ___ 183. **Circle Scroll water pitcher - marigold - very hard to find pitcher, even color**
- ___ 184. Heavy Grape chop plate - amber - scarce color
- ___ 185. **Peacocks 9" plate w/ribbed back - horehound - very scarce color & pretty**
- ___ 186. **Peacocks 9" plate w/ribbed back - green - great example, pretty & rare**
- ___ 187. Peacocks 9" plate w/ribbed back - ice green - nice, highly desirable
- ___ 188. Peacocks 9" plate w/ribbed back - blue - extremely flat, a bit silvery

- ___ 189. Fanciful ruffled bowl - peach opal - great example w/lots of opal
- ___ **190. N's Peacock at the Fountain water pitcher - blue - super nice, scarce**
- ___ 191. N's Peacock at the Fountain tumblers (3) - blue - choice
- ___ 192. N's Peacock at the Fountain water pitcher - marigold - scarce, nice
- ___ 193. N's Peacock at the Fountain tumbler - marigold - pretty
- ___ 194. Fisherman's mug - purple - silvery
- ___ 195. Persian Medallion bon bon - red - very, very rare, pinpoint on base
- ___ 196. Wide Panel 9" vase - red stretch - has 6" base, nice
- ___ 197. Dandelion mug - blue - very pretty example, scarce
- ___ 198. N's Thin Rib 8" vase - sapphire - very scarce color
- ___ 199. Grape & Cable 9" plate w/BW back - purple - has electric highlights
- ___ **200. Homestead chop plate - purple - super pretty example, great mold work, scarce**
- ___ 201. Scroll Embossed 9" plate - marigold - pretty
- ___ 202. Strawberry bon bon - red - nice example, amberina base, pretty irid.
- ___ **203. Strawberry bon bon - lime green opal - extremely rare bon bon plus nice**
- ___ 204. Scroll Embossed 9" plate - purple - fantastic
- ___ **205. M'burg Blackberry Wreath 10" IC shaped bowl - blue - extremely rare, especially in this shape**
- ___ 206. Grape & Cable powder jar - green - scarce color
- ___ **207. Formal hatpin holder - purple - very desirable item & nice**
- ___ 208. Persian Medallion chop plate - blue - scarce & highly desirable, nice
- ___ 209. Cherry Chain 6" plate - blue - pretty
- ___ **210. Poppy Show 9" plate - marigold - very pretty example of a scarce plate**
- ___ 211. Concave Diamond 6" vase - russet - stretch, very scarce & desirable
- ___ 212. Pinecone 7" plate - blue - scarce, a real beauty
- ___ 213. Pinecone 7" plate - marigold - scare, also nice
- ___ 214. Three Fruits PCE bowl w/BW back - purple
- ___ **215. Wishbone 9" ftd plate - marigold - super pretty, a very rare plate**
- ___ 216. Grape & Cable master IC bowl - white - scarce & pretty
- ___ 217. Grape & Cable IC sauces (2) - white - choice
- ___ 218. Good Luck 9" plate w/BW back - marigold - scarce, has nice even irid.
- ___ 219. Waterlily ftd ruffled master berry bowl - teal green - odd colored bowl, rare & nice
- ___ **220. Panther IC shaped centerpiece bowl - marigold - super pretty, very rare**
- ___ 221. N's Eight Sided bushel basket - purple - very scarce
- ___ **222. Stag & Holly spt ftd 9" plate - marigold - extremely rare & nice**
- ___ 223. Fruits & Flowers 7" plate - green - very scarce little plate
- ___ 224. Fruits & Flowers 7" plate - purple - super pretty example
- ___ **225. Grape Arbor tankard water pitcher - ice blue - extremely rare, highly desirable, frosty w/pretty irid.**
- ___ 226. Grape Arbor tumbler - ice blue - nice
- ___ 227. Buzz Saw large size cruet - marigold - very nice example of a scarce item
- ___ **228. N's Peacock at Urn master IC bowl - purple - very pretty, scarce**
- ___ 229. Fleur De Lis 6" plate - marigold - scarce little plate
- ___ **230. Stippled Three Fruits spt ftd ruffled bowl w/smooth edge - aqua opal - lots of opal w/pretty pastel irid., hard to find w/this edge**
- ___ **231. Stippled Three Fruits spt ftd ruffled bowl - blue - super pretty, has electric highlights**
- ___ 232. Stag & Holly large size ftd deep ruffled bowl - blue - very pretty, scarce
- ___ 233. Butterfly & Berry ftd round sauce - red - extremely hard to find, has heat check on side of bowl
- ___ 234. Beaded Shell 4 pc. table set - marigold - hard set to find, instead of cvd sugar bowl, there is an extra spooner
- ___ **235. N's Dandelion 5 pc. tankard water set - purple - super set, hard to find**
- ___ 236. N's Butterfly bon bon w/ribbed back - purple - scarce & nice
- ___ **237. Old Rose Distillery/Stippled Grape & Cable Variant 9" plate w/ribbed back - green - very pretty, scarce**
- ___ 238. Smooth Rays 6" crimped edge plate - purple - scarce, has Jewel Heart exterior
- ___ 239. 11" Ftd Stretch glass vase - vaseline - neat vase
- ___ **240. Stippled Peacocks 9" plate w/ribbed back - marigold - very pretty, highly desirable**

- ___ 241. Stippled Rays IC shaped ftd compote - ice green - stretch irid., scarce
- ___ 242. Imperial Grape 6" plate - marigold - pretty
- ___ 243. Wreathed Cherry water pitcher - marigold - dark & super, a great pitcher
- ___ 244. Octagon 10" deep round bowl - blue - extremely rare color, never seen this piece before
- ___ **245. N's Peacock at Urn chop plate - purple - very, very scarce, highly desirable**
- ___ 246. Persian Medallion rosebowl - white - pretty
- ___ 247. Persian Medallion hair receiver - marigold
- ___ **248. Peacock & Grape 9" plates (2) - marigold - scare, choice**
- ___ 249. Fishscale & Beads 7" plate - marigold
- ___ **250. Good Luck ruffled bowl w/ribbed back - aqua opal - very pretty example w/nice opal, extremely rare**
- ___ 251. Good Luck ruffled bowl w/ribbed back - green - a real beauty, as nice as they get
- ___ 252. Fine Cut & Roses rosebowl - ice blue - pretty, one foot has minor nick
- ___ 253. Eat Paradise Sodas 6" advertising plate - amethyst - very scarce & desirable
- ___ 254. Hatpins including: Big Butterfly (2); Six Plums; Top of the Morning (2); Basketflower; Peacock non - iridized; Diamond Shapes (2) made from Carnival pcs.; Moire Beetle - choice
- ___ **255. Rose Show ruffled bowl - aqua opal - lots of opal, pretty**
- ___ 256. Persian Medallion 6" plate - blue - has gold irid.
- ___ 257. Wide Panel 9 1/2" vase - smoke irid. on milkglass - very unusual piece, has 8" mouth
- ___ 258. Grape & Cable hatpin holder - purple - scarce
- ___ 259. Wide Panel 10" round bowl - red stretch - nice
- ___ 260. Round Up 9" plate - blue - scarce plate
- ___ 261. Round Up 9" plate - white - super pretty
- ___ 262. Wishbone & Spades 6" plate - purple - electric highlights
- ___ 263. Strawberry PCE bowl w/BW back - green - nice
- ___ 264. Grape & Cable centerpiece bowl - marigold - sides straight up, very scarce
- ___ 265. Rose Show 9" plate - white - very scarce, a little deep
- ___ 266. Stretch glass guest set or tumble up - celest blue - nice
- ___ **267. N's Peacock at the Fountain water pitcher - blue - very pretty**
- ___ 268. Dugan Peacock at the Fountain tumblers (9) - blue - choice
- ___ 269. Fenton's Grape & Cable fruit bowl w/plain interior - green - super example
- ___ 270. Star & File spooner - marigold
- ___ 271. Cobblestone ruffled bowl - marigold - nice
- ___ **272. Rose Show Variant 9" plate w/ribbed back - blue - super pretty plate, extremely rare, a dandy**
- ___ 273. All Punch cups: Hobstar & Feather - marigold; M'burg Fruits & Flowers - amethyst; Checkerboard - marigold; S-Repeat - purple; Peacock at the Fountain - sapphire, purple & marigold; Fruit Salad - amethyst & marigold; Acorn Burrs - green - All Sold Choice
- ___ 274. All Vases: 9" Beauty Bud vase - marigold; 8" Beauty Bud vase - amethyst; 7" Miniature Morning Glory - marigold; 7 1/2" Swirl - smoke; Stork - marigold; 6 1/2" Paneled Diamond & Bows - blue; 10" Fish vase - marigold; 12" Knotted Beads - green; N's 10" Fine Rib - marigold; 10" Target - peach opal; All Sold Choice (many of these are very nice)
- ___ 275. Stippled Rays round sauce - green & blue; Fishscale & Beads ruffled bowl - marigold; Stippled Rays ruffled sauce - blue; Sailboat ruffled sauce - blue; Petal & Fan ruffled sauce - peach opal; Grape & Cable ruffled hatshape - marigold; Blackberry Spray JIP CRE hatshape - marigold; Luster Clear punch cup whimsys - green & marigold; All Sold Choice
- ___ 276. Candlestick vase - marigold; Flute candlestick - marigold; Raspberry tumbler - purple; Stork & Rushes mug - marigold; Colonial mug - marigold; Robin mugs (2) - marigold; Vintage Banded mug - marigold; Crackle basket - marigold; Basketweave basket - marigold; All Sold Choice
- ___ 277. Grape & Cable sherbet - marigold; Stippled Petal ruffled bowl - peach opal; Crackle water goblet - white; Smooth Rays ruffled bowl - blue opal; Star & David ruffled bowl - purple(silvery); Blackberry Bramble ruffled compote - amethyst; Fenton Peacock at Urn ruffled compote - marigold; Wide Panel rosebowl - marigold; Raspberry water pitcher - purple (cracked); Coin Spot 9" round bowl - amethyst; All Sold Choice





Seeck Auctions

P.O. Box 377
Mason City, Iowa 50402

PRESORTED
FIRST-CLASS MAIL
U.S. POSTAGE PAID
MINNEAPOLIS, MN
PERMIT NO. 2853-1

*****AUTO**MIXED AADC 553
Lee Markley
PO Box 306
Mentone, IN 46539-0306

