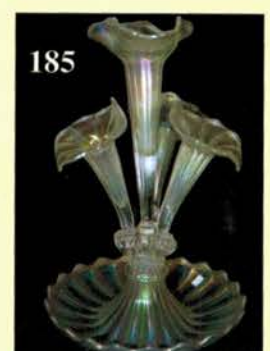
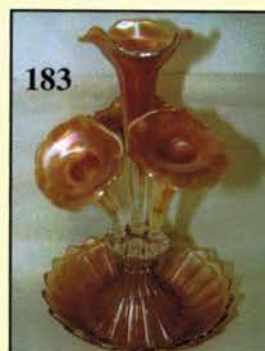
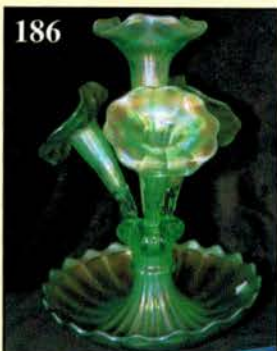
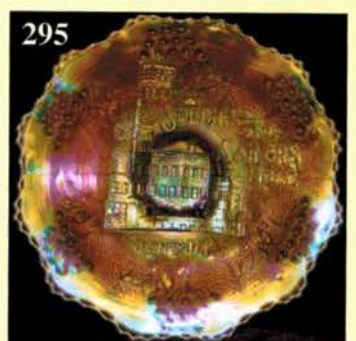
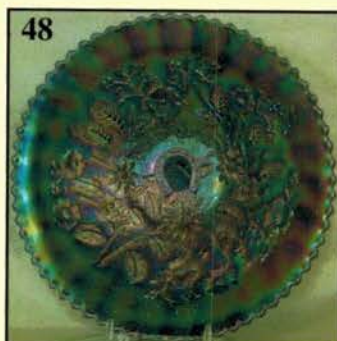
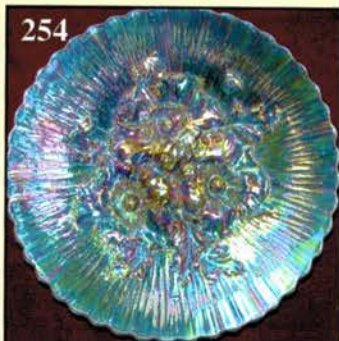
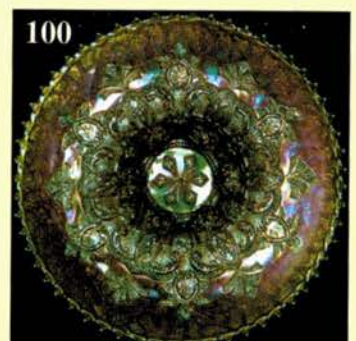
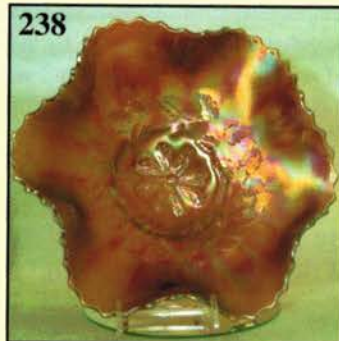
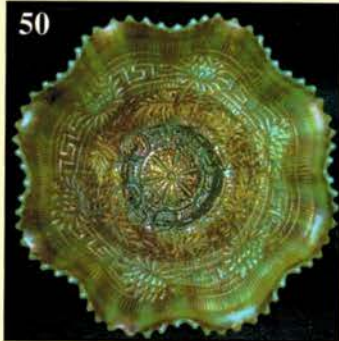


**LUCKY 13TH ANNUAL
CARNIVAL GLASS AUCTION
NEW YEAR'S EXTRAVAGANZA
Saturday, January 10, 2004 9:00 a.m.**



Held By the Mickey Reichel Antique & Auction L.C.

Office: 660-882-5292 • Home: 660-882-5283

WEB SITE: <http://www.yourauctionpage.com/reichel>

E-mail: mreichel@undata.com

Held Inside the Mickey Reichel Auction Center

1 Mile North of I-70 on Hwy. 5, Exit 101, Boonville, Missouri • 20 Miles West of Columbia, MO on I-70

Preview Friday 12 p.m. - 5 p.m. and 7:30 a.m. - 9:00 a.m. Day of Auction



TERMS: Cash or Good Check, VISA and MasterCard accepted.



3% Clerking Fee on all purchases except for payment of cash or check. Proper I.D. required.

WEB SITE: www.yourauctionpage.com/reichel

ABSENTEE BID POLICY:

WRITE IN BIDS: If you are unable to attend the auction, we will be happy to accept absentee bids which must be received by THURSDAY, JANUARY 8, 2004. Don't Delay. E-Mail: mreichel@undata.com

FOR AUCTION PRICE RESULTS: Send \$3.00 and Large S.A.S.E. to 18350 Hunters Ridge Ct., Boonville, MO 65233-2971

PLEASE NOTE: There is a **\$5 handling charge for each successful bid which will be added to the selling price** for all write-in bids. This is in addition to the cost of postage, insurance and packing. Your write-in bid will be entered just as if you are present and bidding. **Successful bidders will be notified in 1 to 3 days by the auctioneer (so be sure to include your phone number).** Direct mail bids to Auctioneer **Mickey Reichel, 18350 Hunters Ridge Ct., Boonville, MO 65233-2971.** Terms: Cash or Check accepted with proper I.D. and Social Security Number and References. Announcements made day of the auction supercede all printed material. Not Responsible for Accidents or Sold Items.

No return on any items once they leave the Auction Center (No Exceptions).****

Call for additional information: 660-882-5292 days or 660-882-5283 evenings before 9:00 p.m.

FAX: 660-882-5292 (evening hours start FAX transmission after beep)

MAIL BIDS: Items are bid on in perfect condition with average or above iridescence OR as listed in the brochures. Bids will not be carried out when damage on an item has been found during the auction.

PEOPLE PRESENT AT AUCTION ARE RESPONSIBLE FOR FINDING ANY PINHEADS, WEAR, SPOTTINESS, MANUFACTURER'S DEFECTS OR ANY OTHER MINOR FLAWS, ETC. *****

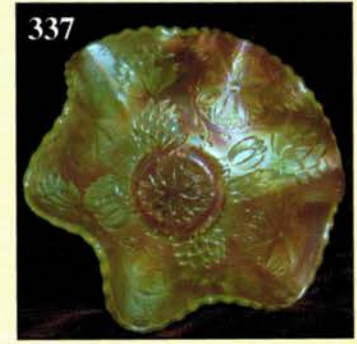
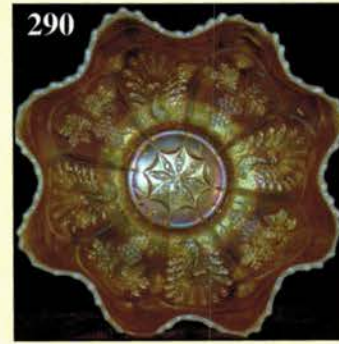
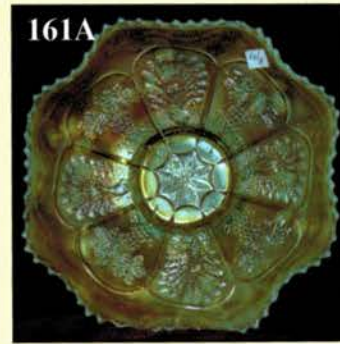
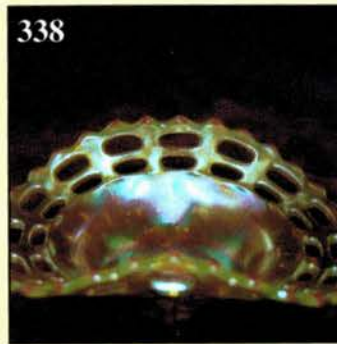
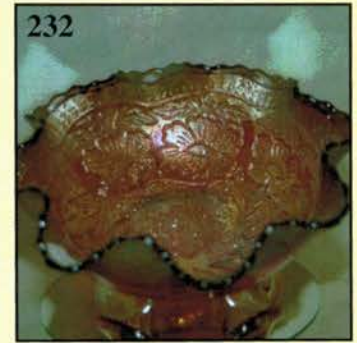
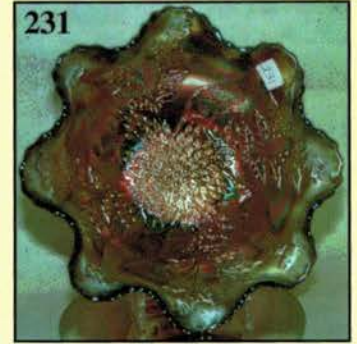
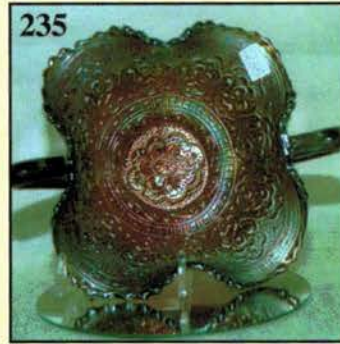
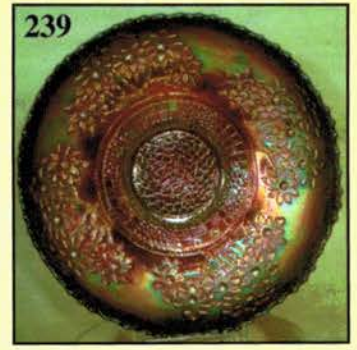
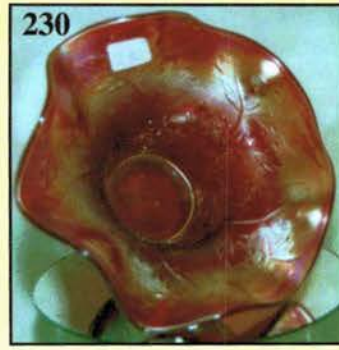
NOTE: Read each line, as we have accentuated the type of no particular piece, all are special.

Make Reservations EARLY at one of these local motels:

Days Inn: 660-882-8624 • Comfort Inn: 660-882-5317 • Super 8: 660-882-2900 • Holiday Inn: 660-882-6882

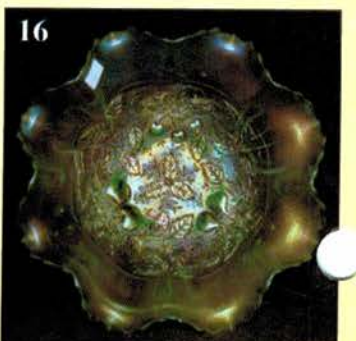
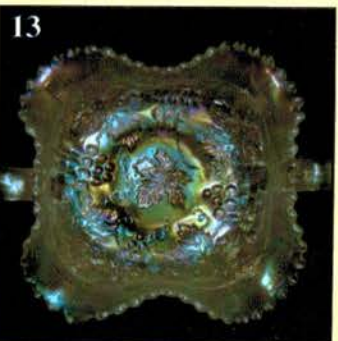
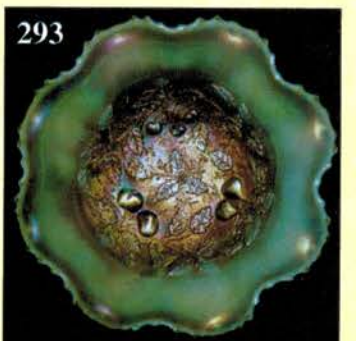
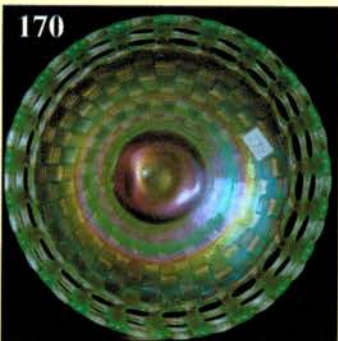
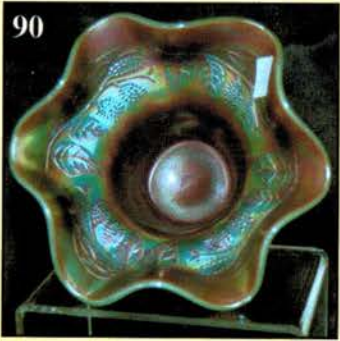
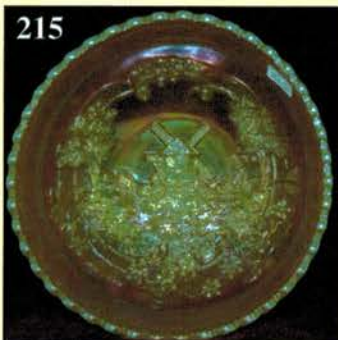
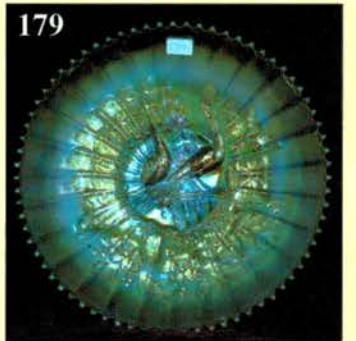
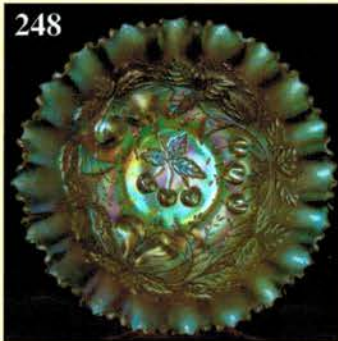
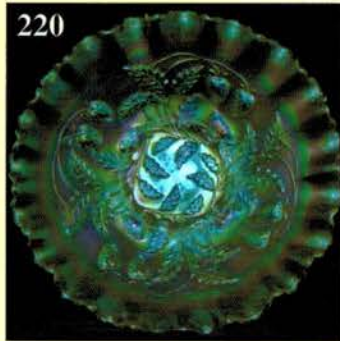
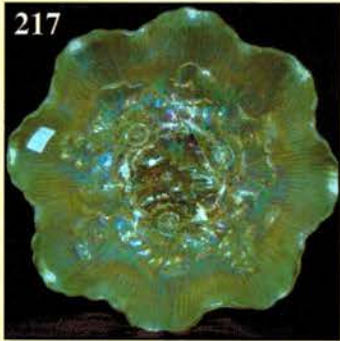
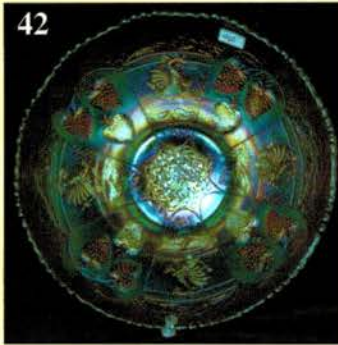
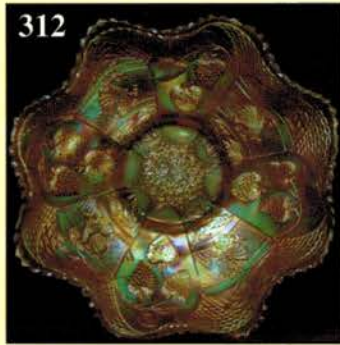
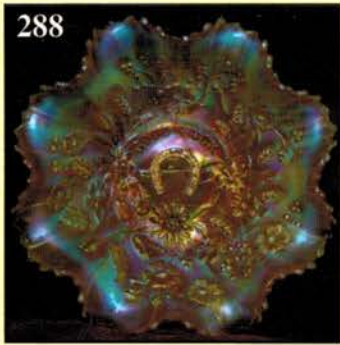
THANK YOU FOR ATTENDING TODAY

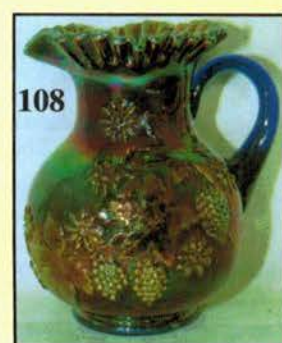
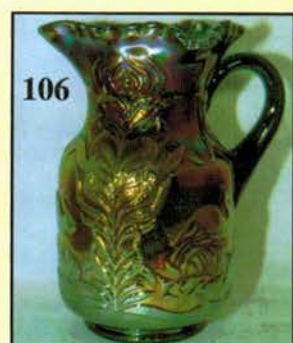
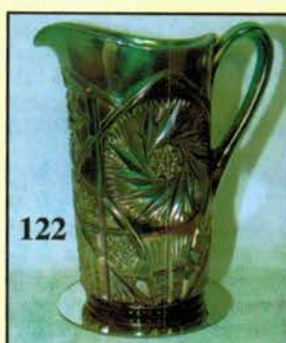
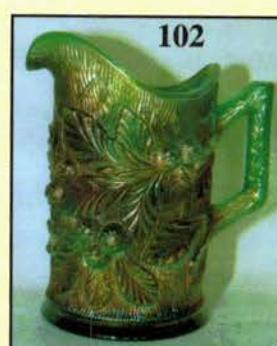
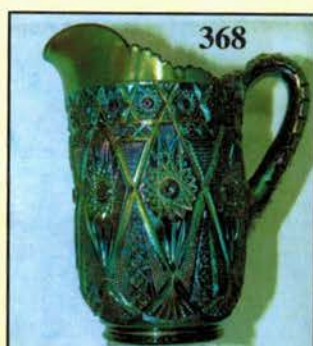
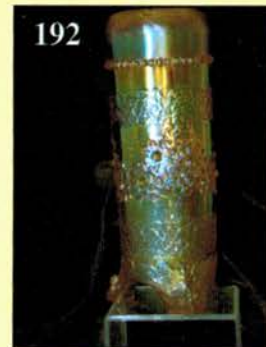
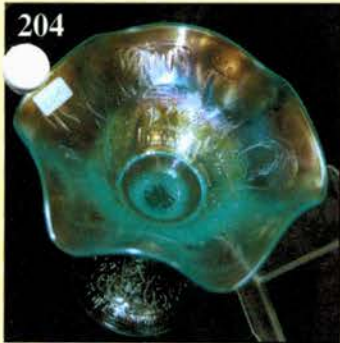
1. **P - IMP 8 1/2 " Beaded bullseye squatty vase 6 1/2 " top. A BEAUTY!**
2. M - IMP Hobstar & band tumbler flared top.
3. **M - N Grape arbor tumbler. EXTRA NICE.**
4. Celeste B - N Concave Diamonds tumbler with coaster.
5. **M - Dug. Many fruits punch cup.**
6. P - Dug. S-repeat punch cup.
7. **M - Fans milk pitcher. SCARCE.**
8. M - IMP Octagon toothpick holder (OLD)
9. **G - IMP Grape 6 1/2 " plate. BEAUTIFUL RADIUM**
10. Lav - Dug 7 " Persian garden plate. B/W Ext. VERY SCARCE
11. **M - N 6 1/4 " G&C Plate 2 sides up. SCARCE & NICE**
12. RARE W - Dug - 7 1/4 " Question mark plate. Georgia Belle Ext.
13. **W - N G&C bon bon. MAGNIFICENT. ALSO A RARITY.**
14. OUTSTANDING M - RADIUM IMP grape 9 " plate.
15. **A - Dug wreath rose ruffled compote.**
16. Lime G - N Stippled 3 fruits medallion spat ftd bowl. VERY SCARCE!
17. **P - Dug 6 1/4 " Mary Ann vase. OLD & BEAUTIFUL.**
18. B - Scarce Fenton Kittens cereal bowl.
19. **Tangerine - Stretch Fenton double dolphins 6 " fan vase.**
20. Novelty M - Vintage miniature lamp (made from powder jar base) /w Chimney
21. **M - Fenton Stream of hearts ruffled compote. NEAT!**
22. B - N Fruits & flowers stemmed compote. ELECTRIC
23. **Aqua base - Fenton Acorn 7 1/2 " ruffled bowl.**
24. M - IMP Shell & sand 7 1/2 flared bowl. OUTSTANDING!
25. **W - US Glass Cosmos & Cane sugar bowl lid.**
26. M - N PCE Peacocks bowl w/rib ext. LOADED with IRID.
27. **B - Fenton 8 1/2 " Captive rose 3-n-1 edge bowl. TOP NOTCH!**
28. M - JAIN Banded moon & star Vt. 7 " tall pitcher. UNLISTED RARITY!
29. **M - IMP 7 1/4 " tall 474 milk pitcher. SELDOM FOUND.**



30. M - 8 1/2 " tall Hobstar & shield water pitcher. SCARCE.
31. **M - Hobstar & Shield tumbler.**
32. M - Panels & Bows water goblet. Maker ?
33. **M - Fenton orange tree wine goblet.**
34. M - Buzzsaw & file water goblet.
35. **M - Buzzsaw & file sherbet. SCARCE**
36. Yellow amber - Omnibus tumbler. Ever seen one?
37. **M - 4 1/2 " round diamond & daisy cut bowls 2x\$.**
38. M - Lightning star tumbler. Large base bruise. Still a rarity.
39. **M - Westmoreland Daisy Squares CRE pedestal cuspidor.**
40. LAV - N Rose Show bowl. SCARCE BEAUTY!
41. **P - Dug 9 " Ten ruffle flowers & frames bowl. FANTASTIC!**
42. M - Fenton 9 " ICS collar base Dragon & Strawberries. LOADED PINKS & BLUES.
43. **P - IMP 7 3/4 " Ruffled windmill bowl. TOTALLY ELECTRIC!**
- 43a. P - IMP 6 3/4 " Deep round windmill bowl. LOADED & ELECTRIC.
44. Beautiful B - Fenton 9 " Captive rose plate.
45. **Smoke - Fenton 10 1/2 " Ruffled ball footed stag & holly bowl. WOW!**
46. Rev Amberina? - IMP 5 " Round Lustre Rose bowl. MOST UNUSUAL COLOR.
47. **Amber - Hansen Panelled Flute? Toothpick holder. NEAT.**
48. RARE B - N 9 " Thin base stippled good luck plate. Rib ext. MULTI ELECTRIC.
49. **M - N 9 " Stippled three fruits plate. Rib Ext.**
50. ULTRA RARE Lime Green Opal - N Embroidered Mums bowl. 1 OF 3 KNOWN.
51. **SCARCE PO - Dug 10 " Garden path variant bowl. Soda gold Ext.**
52. P - N 7 1/2 " Ruffled G&C bowl. BW Ext.
53. **BA - Signed Magid hand beaded in USA evening bag.**
54. Red Amberina - IMP 8 3/4 " round floral & optic footed bowl. STRETCH.
55. **Red - 7 1/4 " bowl with rolled rim.**
56. IG Stretch Vas. - Dug 10 ruffle pony bowl. NOT MANY AROUND - SUPER!
57. **Lime IG - N 10 1/2 " Thin rib vase. Polished base.**
58. M - JAIN 9 " Elephant vase.
59. **M - JAIN 6 1/2 " Elephant vase.**
60. M - JAIN 5 " Right-handed Hand vase.
61. **Frosted M - JAIN Cameo 6 1/2 " flying geese vase. RARE.**
62. Frosted M - JAIN Cameo 6 1/2 " Misty Morn vase. RARE.
63. **PO - Westmoreland JIP 9 1/2 " Corinth vase.**
64. PO - Westmoreland JIP 8 3/4 " Coring vase.
65. **B - Fenton Swung 13 1/2 " April Showers vase.**
66. B - Fenton 9 3/4 " Rustic vase. 4 3/4 " CRE top.
67. **P - N 10 1/4 Tree Trunk vase. SUPER RADIUM. Heat CK. close to base.**
68. P - N 8 3/4 " Tree Trunk vase. Vt. top.
69. **Lav - N 10 3/4 " Diamond Points Vt. vase. Starred Base. SCARCE & PRETTY.**
70. Deep P - N 10 " Diamond Points vase. MULTI ELECTRIC.
71. **M - N 8 3/8 " Diamond Points Vt. vase. 4 1/4 " round scalloped top.**
72. White Opal - Dug 5 3/4 " Lined Lattice squatty vase. 5 " Top Marigold Irid Int.
73. **G - Fenton 19 3/4 " Diamond & Rib Funeral vase. 5 1/4 " plunger base. Side nick.**
74. P - Fenton 22 1/4 " Rustic Funeral vase with 5 1/4 plunger base. WOWEE!
75. **Red - Iridized 21 " tall Peacock electric table lamp. FANTASTIC FIND!**
76. VERY RARE WHITE - N Peacock plate with basketweave ext. SUPER IRID!
77. **G - N 9 " G&C Plate with basketweave ext. GREEN IRIDESCENCE.**
78. Sapphire B - N Stippled G&C Vt. 9 " Plate, Rib Ext. EXTREMELY DESIRABLE.
79. **M - 1/10th pint Golden Wedding Rye bottle, full label. GREAT MINIATURE.**
80. Smoky Olive - N 9 " G&C vt. plate, BW Ext. TOTALLY DIFFERENT!
81. **G - N PCE Strawberry bowl, BW Ext. SCARCE SHAPE.**
82. Pastel M - N 8 3/4 " Stippled 3 fruits collar based ruffled bowl. Rib Ext. Super Pastel!
83. **Scarce G - N 9 " Ruffled Nippon bowl, BW Ext. VERY PRETTY!**
84. RARE B - N 7 1/2 " Fruits & Flowers 6 ruffle bowl, BW Ext. ELECTRIC!
85. **G - N Leaf & Beads rose bowl, plain Int. Alaskan iridescence.**
86. Ren. B - N PCE Stippled Good Luck bowl, rib Ext. SCARCE COLOR!
87. **P - N Squatty 6 3/4 " Fine Rib vase. 5 1/4 " top. Multi Iridescent.**
88. Scarce B - N 10 " Four Pillars vase interior ribbed. Normal feet, Great Color.
89. **Lime Vas. - Fenton 6 " ruffled ball footed two flowers bowl. HIGHLY DESIRABLE!**
90. RARE Sapphire Opal - Fenton 6 " ruffled blackberry spray hat. COLOR PLUS!
91. **Dark Rich M - Mlb. Hobnail swirled rose bowl. A SATIN BEAUTY.**
92. Emerald G - 9 3/8 " Four Flowers Vt. plate. HIGHLY UNDER VALUED ITEM!
- 92a. Cranberry Opal Contemporary 14 1/2" Fenton J.I.P. Poppy vase.
93. **Geraldine's Delight Amberina - Contemporary ALIG 10 1/4 " Homestead Chop Plate.**
94. G - Contemporary ALIG 10 1/4 " Homestead Chop Plate.
95. **B - Contemporary ALIG 10 1/4 " Homestead Chop Plate.**
96. B - Contemporary ALIG 10 1/4 " Chrysanthemum Chop Plate.
97. **G - Contemporary ALIG 10 1/4 " Chrysanthemum Chop Plate.**
98. Sea Mist Green - Singleton & Bailey 11 " Farm Yard Chop Plate.
99. **Scarce M - Dug Garden Path Vt. large 6 3/4 " rose bowl. A BEAUTY!**
100. RARE M - Dug Garden Path Vt. 11 " chop plate. 2-3 Known!
101. **P - Dug. Maple Leaf 7 Pc water set. Pitcher has 1 " Rim Chip - Handle.**
102. Scarce G - N Acorn Burrs 7 pc water set.
103. **Light M - N G&C 7 pc water set.**
104. P - N G&C 7 pc water set.
105. **M - Fenton Lattice & Grape tankard 7 pc water set.**
106. G - Fenton Fluffy Peacock 7 pc water set.
107. **M - Fenton Freesia enameled tankard & 6 tumblers. Enamels are Hot!**
108. B - Fenton Vt. Floral & Grape 7 pc water set.
109. **M - N Grape Arbor tankard with 4 tumblers.**
110. RARE M - Brockwitz Diamond Cut Shields water pitcher. SUPER!
111. **M - IMP File Water pitcher. SUPER DARK & PRETTY!**
112. M - IMP File tumbler. ALSO GREAT.
113. **P - IMP Grape 7 pc water set. OUTSTANDING!**
114. Extra Nice P - Dug Heavy Iris tumbler.
115. **Florentine IG Vas - 12 " Panels vase. Small base bruise. (So What?)**
116. AWESOME Deep P - N 11 " Tree Trunk vase. ELECTRIC PURPLE!
117. **Sapphire - Fenton 9 1/4 " Fine Rib vase. LOADED WITH IRID.**
118. W - Dug 4 1/2 " Squatty Lattice & Points vase. Daisy in Base IRID GALORE!
119. **Rich Dark M - N Peacock at the fountain tumblers. Choice - A,B,C**

120. Light M - Fenton Orange Tree Orchard water pitcher. SCARCE.
121. M - 8 1/4 " Tall Buzzsaw & File water pitcher. **SELDOM OFFERED.**
122. G - Cambridge Double Star water pitcher. BLUE HIGH-LIGHTS, NICE!
123. M - IMP Star & File 7 3/4 " pitcher. **LOADED WITH PINKS.**
124. Scarce P - IMP Tiger Lily water pitcher. PINKS & BRONZE IRID!
125. Aqua/Teal? - IMP 9 1/4 " Heavy Grape master berry bowl.
126. P - IMP 11 3/8 " Imperial Grape Low 8 ruffle master bowl. ELECTRIC!
127. P - N Large Tornado vase. Small base chip.
128. Deep P - N Raspberry milk pitcher. BECOMING SCARCE!
129. G - Mlbg 7 3/4 " ICS Mayan bowl. **RADIUM.**
130. G - Mlbg Dome Base CRE Fleur De Lis bowl w/base chip. RADIUM BLUES.
131. G - Mlbg 8 5/8 " 3-n-1 Blackberry Wreath bowl. **SATIN BEAUTY!**
132. G - Mlbg 10 " 6 Ruffled Holly Whirl bowl. SATIN & PRETTY!
133. G - Mlbg 9 3/4 " Ruffled Nesting Swan bowl. **RADIUM HIGHLIGHTS.**
134. G - Mlbg 6 " ICS Cosmos bowl. EMERALD & RADIUM!
135. P - Mlbg Large Tracery bon bon. **RADIUM PLATINUM & PINKS.**
136. Outstanding M - Mlbg 10 1/2 " 3-n-1 Seaweed Bowl. Exceptional Satin Irid.
137. M - Mlbg 10 " 6 Ruffle Rays & Ribbons bowl. **SATIN BLUES & PINKS.**
138. A - Fenton Persian Medallion - G&C Large Ball Footed Fruit Bowl.
139. Cobalt B - Fenton 8 1/4 " ICS Dragon & Lotus bowl. **GREAT COLOR!**
140. B - Fenton Round 8 1/2 " Fantail footed bowl. B&B Ext.
141. Beautiful A - Dug 8 3/4 " Low Ruffled Fanciful plate/bowl?
142. Scarce A - Fenton 8 " 3-n-1 edge Wild Blackberry bowl. NOT MANY OFFERED!
143. P - IMP 7 1/2 " Ruffled Shell & Sand bowl. Marie Chip. **Still a beauty!**
144. P - IMP 10 " 8 Ruffle Zippered Heart master berry bowl. SUPER IRID!
145. P - IMP 11 3/8 " Ruffled Lustre Rose footed centerpiece bowl. **SUPER ELECTRIC!**
146. A - Fenton 8 " Tight CRE Thistle bowl. NEAT EDGING!
147. W - Dug 11 " Round Persian Garden Large bowl, BW Ext. **FANTASTIC IRID!**
148. M - Fenton 9 1/2 " Footed 8 Ruffle Orange Tree Master Berry Bowl. GREAT!
149. **RARE P - Pastel Swan Salt.**
150. Pink - Pastel Swan Salt.
151. **Celeste B - Pastel Swan Salt.**
152. Lime Vas - Pastel Swan Salt. SCARCE!
153. **W - IMP Stretch Chesterfield Mug.**
154. Tangerine - Stretch Fenton double dolphins 5 1/4 " fan vase.
- 154a. Vas - Fenton Stretch #643 covered bon bon.
155. **Vas - Fenton Stretch 7 1/2 " 4 Ruffle Dolphin stemmed compote.**
156. Vas - Stretch 10 " Round Flared Console bowl.
157. **Vas - N Stretch 8 1/2 " #657 Candle sticks.**
158. Vas - Fenton Stretch 8 1/2 " Colonial candle sticks.
159. **Vas Opal - Fenton Rib Optic 3 3/8 " tall juice glass.**
160. Scarce Vas - Fenton Persian Medallion 4 sides up bon bon. NEAT FIND!
161. **Vas - Fenton 7 " 6 Ruffle Vintage grape bowl. Scarce size.**
- 161a. **Rare Vas Opal - Fenton 9 " Sq. 8 Ruffle collar base Peacock & Grape bowl.**
162. Lime G base - Marigold Overlay Laurel Band Tumbler.
- 162a. Vas - Fenton 8 3/4 " 8 Ruffle collar base Peacock & Grape bowl. Marigold Irid.
163. **Vas IG Stretch - Parlor Panels Tumbler.**
164. Celeste B Stretch - Parlor Panels Tumbler.
165. **Rare Florentine IG Vas - Adam's Rib Mug.**
166. Scarce W - IMP Chesterfield Tumbler.
167. **Celeste B - N Concave Diamonds Tumbler (for tumble up). RARELY FOUND.**
168. Russet G - N Concave Diamonds Tumbler (for tumble up). RARELY FOUND.
169. **W - Fenton Stretchy 8 5/8 " 3 row open edge low round bowl. WOW!**
170. Vas IG - Fenton 8 " 3 row open edge ICS bowl. WOW!
171. **Scarce M - N PCE Stippled Peacocks bowl, rib Ext. LOADED WITH PINKS!**
172. B - N PCE Peacocks bowl, rib Ext. ELECTRIC BLUE HIGH-LIGHTS!
173. **P - N PCE Peacocks bowl, rib Ext. A BEAUTIFUL IRIDIZED EFFECT.**
174. Outstanding A - N 8 Ruffle peacocks bowl, rib Ext. GREAT LOOKER!
175. **Deep B - N 8 Ruffle stippled peacocks bowl, rib Ext. THE CENTER IS A RAINBOW OF IRIDESCENCE!**
176. Rare B - N 9 " Stippled Peacocks plate, rib Ext. A GREAT EXAMPLE!
177. **Electric B - N 9 " Peacocks plate, rib Ext. TOP NOTCH!**
178. Outstanding Rich A - N 9 " Peacocks plate, rib Ext. A GREAT ARRAY OF IRID!
179. **Champagne / Clambroth? - N 9 " Peacocks plate, rib Ext. A PASTEL BEAUTY!**
180. Rich M - N 9 " Peacocks plate, rib Ext. PUMPKIN & BLUE IRID.
181. **Very Scarce A - N 9 " Stippled G&C Vt. Plate, rib Ext. GOLD BRONZE & BLUE CENTER.**
- Fantastic offering of Northwood wide panel epergnes. Please call or email for detailed information concerning damage and factory flaws on these rare items.**
182. Beautiful P - N Wide Panel Epergne, complete.
183. **Dark M - N Wide Panel Epergne, complete.**
184. Beautiful G - N Wide Panel Epergne, complete.
185. **Frosty Pastel W - Wide Panel Epergne, complete.**
186. Ultra Rare IG - Wide Panel Epergne, complete. Professionally Restored.
187. **Flawed M base and 3 side lilies from a wide panel epergne.**
188. High Quality B - N 8 3/4 " Ruffled Embroidered Mums bowl, rib Ext. ELECTRIC HIGHLIGHTS!
189. **Deep P - N 8 3/4 " Ruffled Embroidered Mums bowl, rib Ext. MULTI ELECTRIC.**
190. IB - N 8 3/4 " Ruffled Embroidered Mums bowl, scarce with plain Ext.
191. **Super Pastel M - N 8 3/4 " Ruffled Embroidered Mums bowl. SHOW STOPPER!**
192. Fantastic Pastel M - Fenton Orange Tree hatpin holder. SHOWERED WITH BLUES!
193. **Deep P - N G&C Hatpin Holder. KILLER ELECTRIC!**
194. Nice Rich M - N G&C Hatpin Holder. LOADED WITH PINKS!
195. **Scarce G - N G&C Hatpin Holder. Minor toe nicks.**
196. Pumpkin M - N Hearts & Flowers compote, rib Ext. Base Nick.
197. **Deep B - N Hearts & Flowers compote, rib Ext. LOADED WITH ELECTRIC BLUE! THE ONE YOU HAVE BEEN WAITING FOR!**
198. Frosty W - N Hearts & Flowers compote, scarce plain Ext. PASTEL IRID.
199. **IB - N 8 3/4 " Ruffled Hearts & Flowers, plain Ext. PASTEL PINKS & BLUES GALORE! ONE OF THE FINER EXAMPLES.**
200. Beautiful IG - N PCE Hearts & Flowers bowl, rib Ext. REALLY PRETTY!





201. **Rare M - Fenton Butterfly & Berry Hatpin holder. Repaired Lip.**
202. P - N Peacock at the Fountain ruffled compote, rib Ext. **ELECTRIC HIGHLIGHTS! BECOMING VERY DESIRABLE PATTERN AND HARD TO FIND!**
203. **Frosty W - N Peacock at the Fountain ruffled compote, plain Ext.**
204. Rare IB - N Peacock at the Fountain ruffled compote, plain Ext. **SOFT BLUES!**
205. **Scarce IB - N G&C Banana bowl. SUPER PRETTY & DESIRABLE, NOT MANY AROUND! THIS COULD FILL THAT SPOT ON YOUR SHELF!**
206. IG - N Acorn Burrs punch cups. 2x\$
207. **AO - N Daisy & Drape vase with flared top.**
208. Rich P - N G&C 9 1/8 " plate, plain back. **FANTASTIC IRIDESCENCE!**
209. **Lav. - N 9 1/8 " Strawberry plate, plain back. GREAT EYE CATCHER!**
210. Radium G - Mlbg. 7 1/2 " 3-n-1 edge Blackberry Wreath bowl. **A DANDY!**
211. **A - Mlbg. 8 1/2 " ICS Radium Peacock Mystery bowl. SCARCE!**
- 211a. **M - Mlbg. 6 1/2 " Tri-corner Holly Sprig bowl. A RADIUM BEAUTY!**
212. A - Mlbg. 10 " 6 Ruffle Holly Whirl bowl. **FANTASTIC SATIN PINKS & BLUES.**
213. **Moonstone - Fenton 7 1/2 " 8 Ruffle Acorn bowl. SCARCE COLOR!**
214. Moonstone - Fenton 7 " Round Flared G&C bowl. **ALSO TOUGH TO FIND!**
215. **Rare Moonstone - IMP 7 " Deep Round Windmill bowl. WOW!**
216. Fantastic M - N Ruffled Stippled Good Luck bowl, rib Ext, thin base. **LOADED WITH PINKS, BLUES! WHATEVER YOU DESIRE!**
217. **Clambroth? - N Ruffled Oriental Poppy bowl. A PASTEL BEAUTY!**
218. Great M - N 9 " Stippled Three Fruits plate. Tip Flake. **GREAT COLOR.**
219. **B - N 9 " Ruffled Embroidered Mums bowl. UNUSUAL FROSTY BLUE IRID.**
220. Clambroth - N PCE Strawberry bowl, plain back. **RAINBOW IRID.**
221. **Lav. - IMP 8 " Ruffled Windmill bowl. VERY VERY PRETTY!**
222. Great M - Fenton 9 1/4 " Peacock and Urn plate. **THIS BIRD IS LOADED WITH IRIDESCENCE.**
223. **Scarce Amber - IMP 5 " Lustre Rose Rose bowl. BEAUTIFUL INTERIOR.**
224. P - IMP Flat 9 1/2 " Scroll Embossed plate. **GORGEOUS ELECTRIC IRIDESCENCE! THIS IS THE ONE!**
225. **Pumpkin M - N 9 3/4 " ICS Peacock and Urn large bowl. PINKS, PINKS & PINKS!**
226. Rare G - N PCE Peacocks bowl, rib Ext. Normal Factory Dye Run, but beautiful iridescence on this hard to find shape and color!
227. **M - IMP 17 1/2 " tall Ripple Funeral vase, 4 3/4 " base, 7 1/2 " top.**
228. White Milk Glass - IMP 12 1/2 " tall Smooth Panel Funeral vase, 4 1/2 base, 7 1/8 " flared top. **FANTASTIC SMOKE IRIDESCENCE! A MUST HAVE ITEM!**
229. **Dark Radium Smoke - IMP 11 " Smooth Panel Funeral vase, 4 1/2 " base, 7 3/4 " top.**
230. **RED - Fenton 6 " Ruffled Holly Hat. IT'S RED ALRIGHT!**
231. **RED - Fenton 8 3/4 " Ruffled Stag & Holly spatula footed bowl. RARE & BEAUTIFUL!**
232. **RED REVERSE AMBERINA - Fenton 8 " Ruffled Two Flowers Spatula footed bowl. THE AMBERINA IS OUTSTANDING ON THIS SCARCE PATTERN!**
233. **RED - Fenton 7 " 6 Ruffle Leaf Chain bowl. NEAT PATTERN!**
234. **RED REVERSE AMBERINA - Fenton 5 3/4 " Round Flared Stippled Rays bowl, scale band Ext. LAYERS OF COLOR.**
235. **RED - Fenton Persian Medallion Bon Bon 4 sides up. THIS IS THE ONE!**
236. Very Rare **CHERRY RED - Fenton 7 " 6 Ruffle Vintage Grape bowl.**
237. **RED Stretch - IMP Jewels Cream & Sugar, tiny factory split on rim of sugar bowl on this very beautiful and rare pair.**
238. Ultra Rare **RED AMBER SWIRL - Dug 10 " 6 Ruffle Cosmos Vt. bowl. POSSIBLY ONE OF A KIND AND IT'S BEAUTIFULLY AND EVENLY IRIDIZED.**
- 238a. **RED - Fenton 4 3/4 " Round Butterfly & Berry footed bowl. A TRUE RARE PATTERN IN THIS SIZE. FIRST I'VE SEEN.**
239. **RED - Fenton 8 1/2 " ICS Orange Tree bowl. FANTASTIC AGAIN!**
240. **RED - Fenton 9 " 8 Ruffle Square Dragon & Lotus collar base bowl. AGAIN!**
- 240a. **RED - Fenton 8 3/4 " Square 8 Ruffle Persian Medallion bowl.**
241. **Blue - Fenton 4 1/2 " Kittens 4 sides up bowl. OUTSTANDING!**
242. Rare Blue - Fenton Kittens cup.
243. **Ultra Rare Lav. - Fenton 4 1/2 " Kittens Banana Shaped bowl.**
244. Fantastic Lav. - Fenton Kittens Cereal bowl. **JUST BEAUTIFUL!**
245. **Dark M - Fenton Kittens Cup. GREAT DETAIL.**
- 245a. **M - Fenton Flat 4 5/8 " Kittens Plate.**
246. M - Fenton Kittens Toothpick or Vase.
- 246a. Rare Blue - Great Detail Kittens Toothpick or Vase.
247. **P - Dug 6 1/4 " CRE Cherries Plate, Jewelled Heart Ext. ELECTRIC!**
248. Pastel Seafoam G - N PCE Three Fruits bowl, plain Ext. **BEAUTIFUL PASTEL IRIDESCENCE. NO RUBS ON FRUIT, VERY UNUSUAL.**
249. **Sapphire or Blue Opal ? - N Beaded Cable Rose bowl. UNUSUAL BEAUTY!**
250. Fantastic M - N Peacock at the Fountain Footed Ruffled Fruit bowl.
251. **P - IMP 5 1/2 " Ruffled Scroll Embossed bowl, file Ext. ELECTRIC PLUS!**
252. Dark M - N Singing Birds Mug. **REAL PRETTY!**
253. **G - N 9 1/4 " Poppy Show Plate. BEAUTIFUL EMERALD HIGHLIGHTS ON THIS RARITY! Small Manufacture Dye Thread.in Base.**
254. Electric B - N 9 1/4 " Poppy Show Plate. **PLATE COLLECTORS SPECIAL.**
255. **Rich M - Fenton 8 1/2 " 6 Ruffle Concord bowl. HOT PATTERN!**
256. Outstanding P - Dug CRE 2 Sides Up Daisy Web Hat. **GORGEOUS!**
257. **M - Classic Arts bowl 3 " tall by 4 1/4 " in diameter. NEAT ITEM.**
258. W - IMP Chrysanthemum Chop Plate signed NUART. **FROSTY & STRETCHY!**
259. **A - N 6 1/4 " FLAT Eagle Furniture Adv. Plate. RARE FLAT & GORGEOUS!**
260. P - N 9 3/4 " PCE Wishbone bowl, BW Ext. **GREAT EXAMPLE!**
261. **P - N 9 3/4 " ICS Peacock and Urn bowl along with 6 5 1/2 " matching berry bowls. GREAT FIND, GREAT COLOR! JUST DON'T SEE SETS! WOW!**
262. Outstanding IB - N 9 " Peacocks plate, rib Ext. **HARD TO FIND BETTER!**

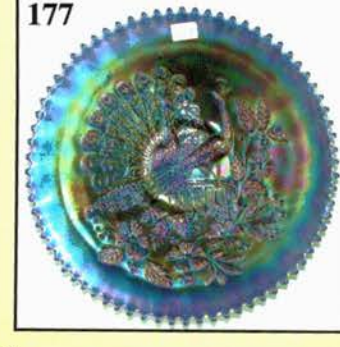
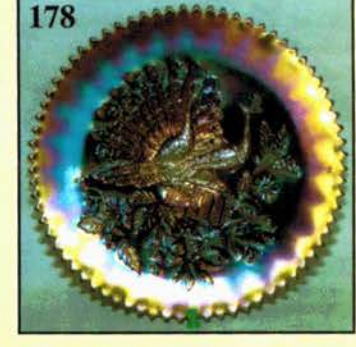
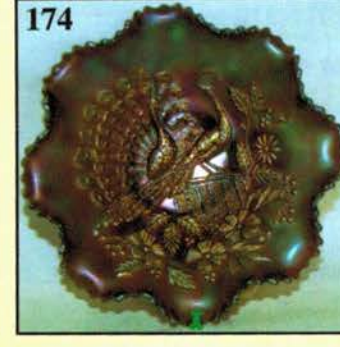
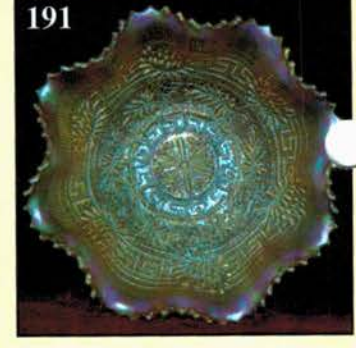
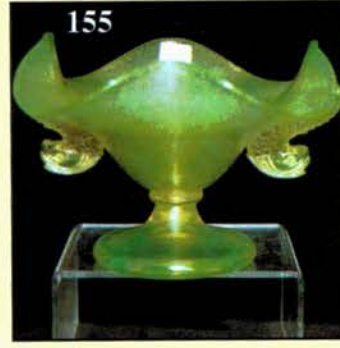
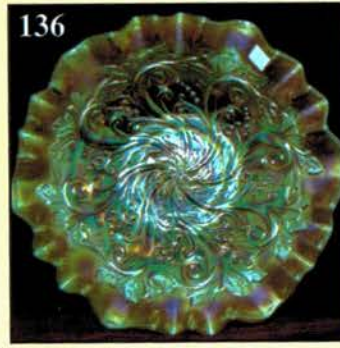
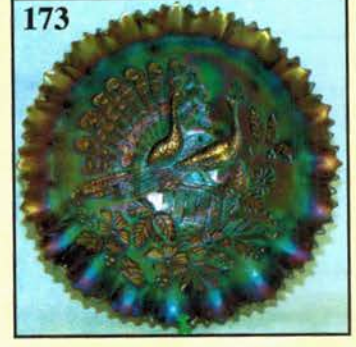
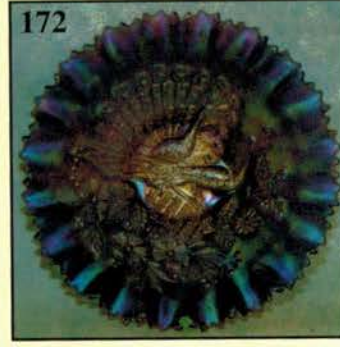
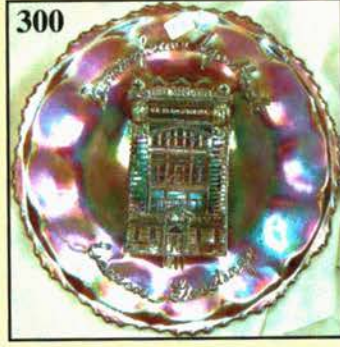
RARE RED! RARE RED! RARE RED! FINALLY A CHANCE TO OWN A PIECE OF RED CARNIVAL! A FANTASTIC COLLECTION FOLLOWS!

263. Scarce IB- N 8 1/2 " Ruffled Peacocks bowl, rib Ext.
 264. PO - Westmoreland 8 1/2 " 6 Ruffle Pearly Dots bowl. 2 3/4 " of Opal!
 265. Electric P - Dug 11 " 6 Ruffle Ski Star & Compass bowl. TOP NOTCH!
 266. A - N G&C Punch Cups. 6x\$
 267. Ultra Rare G - Fenton Horse Medallion Rose bowl. Engraved CHRIST CHURCH 1922. ONE OF A KIND!
 268. Fantastic W - Dug 7 " Question Marks Pedestal plate, Georgia Belle Ext.
 269. Rare A - Cambridge Inverted Thistle Butter Dish / Lid. Minor chips.
 270. A - Cambridge Inverted Thistle Spooner. ALSO RARE.
 271. A - Cambridge Inverted Thistle Sugar bowl and lid. Inside nick on lid.
 272. A - Cambridge Inverted Thistle Tumblers. Choice A or B. OUTSTANDING!
 273. G - Cambridge 5 " Round Inverted Strawberry Compote.
 274. BA - 9 1/2 " Low 8 Ruffle 4 Flowers Vt. Bowl. OUTSTANDING IRID.
 275. Aqua - Fenton 6 " 6 Ruffle Little Flowers bowl. SCARCE COLOR & SIZE.
 276. Sapphire or Dark Aqua? - Fenton 6 " 6 Ruffle Sailboats bowl. VERY DIFFERENT.
 277. Scarce Dark Green - Fenton 6 1/4 " 6 Ruffle Sailboats bowl. BEAUTIFUL!
 278. Dark A - Fenton 6 3/4 " 6 Ruffle Ball Footed Lotus & Grape Vt. bowl. NEAT!
 279. Dark M - N Square Stippled Fruits & Flowers Stemmed Bon Bon. COLORFUL!
 280. P - N Fruits & Flowers Stemmed Bon Bon.
 281. Electric B - N Fruits & Flowers Stemmed Bon Bon.
 282. Scarce A - Fenton 9 " Square 8 Ruffle Peacock and Urn bowl. PINKS & BLUES!
 283. Rich M - Fenton 9 " Square 8 Ruffle Peacock and Urn bowl. A BEAUTY!
 284. Dark B - N PCE Good Luck bowl, rib Ext. Electric Highlights.
 285. Cobalt B - N Ruffled Stippled Good Luck bowl, rib Ext. RAINBOW IRID!
 286. Rich M - N Ruffled Stippled Good Luck bowl, rib Ext. PUMPKIN HIGHLIGHTS!
 287. Dark M - N Ruffled Good Luck Vt. bowl, BW Ext. GREAT EXAMPLE!
 288. Fantastic Pastel M - N Ruffled Good Luck bowl, rib Ext. PINKS & BLUES WOW!
 289. M - N PCE Good Luck bowl, BW Ext. BEAUTIFUL GOLD & SILVER!
 290. PO - Fenton 8 3/4 " Square 8 Ruffle collar base Peacock & Grape bowl. OUTSTANDING EXAMPLE OF THIS RARITY!
 291. Custard Glass - N Nutmeg Stippled Singing Birds Mug. NON-IRID.
 292. W - Dug 9 " Low Ruffled Round Up bowl or plate. SCARCE.
 293. Pastel AO - N 9 " Ruffled Stippled Three Fruits Medallion, Spat Footed bowl.
 294. Beautiful M - N Ruffled Poinsettia & Lattice footed bowl. OUTSTANDING!
 295. Rare Beautiful M - Fenton Advertising 8 " Illinois Soldiers & Sailors plate.
 296. B - Fenton 8 " ICS Ribbon Tie bowl. OUTSTANDING COLOR!
 297. P - Dug Grape Delight Nut bowl.
 298. Extra Nice G - Fenton 9 3/4 " 3-n-1 edge Feathered Serpent bowl.
 299. Beautiful P - N G&C Banana bowl.
 300. Radium A - Fenton 9 1/4 " Birmingham Age Herald plate. ADVERTISING IS HOT!
 301. P - N Blossomtime Compote. EXTREMELY SCARCE PATTERN!

302. B - Fenton Birds & Cherries Ruffled Compote.
 303. Dark P - Dug Grape Delight Rose bowl.
 304. A - N Leaf & Beads Rose bowl Vt. No Fluting.
 305. AO - N Leaf & Beads Rose bowl. ALWAYS IN DEMAND.
 306. AO - N Beaded Cable Rose bowl. EXTRA NICE.
 307. P - IMP Flute Toothpick. A REAL CUTIE!
 308. Dark M - IMP Flute Toothpick.
 309. Scarce B - Fenton 7 " 6 Ruffle Collar Base Horse Medallion bowl.
 310. Outstanding IG - N 9 " Peacocks plate, rib Ext. GREAT IRID.
 311. Lime G - N Dome Base 8 1/2 " Ruffled Three Fruits Medallion bowl.
 312. Outstanding M - Fenton 9 3/4 " Ruffled Footed Dragon & Strawberry bowl.
 313. P - N 5 1/2 " ICS Peacock and Urn bowl.
 314. B - N 5 7/8 " ICS Peacock and Urn bowl. LOADED WITH PINKS.
 315. Reng B - N Stippled Ruffled Peacocks bowl, rib Ext. RARE.
 316. Outstanding P - N G&C Powder Jar.
 317. BA - Australian 9 1/2 " 16 Ruffle Pin-ups bowl. Rim Roughness. RARE ITEM.
 318. BA - Australian 9 1/2 " 12 Ruffle Kingfisher bowl.
 319. BA - Australian 5 1/2 " 12 Ruffle Shrike bowl. ELECTRIC!
 320. BA - Australian 5 1/2 " 12 Ruffle Kangaroo bowl w/ branch.

Hatpin Collection

321. Aqua Rooster
 322. BA Bars & Beads
 323. BA Moire Beetle
 324. BA Six Plums
 325. BA Moonie
 326. BA Coolie Hat
 327. BA Large Star Center
 328. BA Large Elegance
 329. BA Small Star & Scroll
 330. BA Small Cherry Flower
 331. BA Basket Flower
 332. BA Large Penstar
 333. BA Banded Criss Cross or Circle Basket
 334. M - Fenton 9 " Collar Base Peacock & Grape plate. PASTEL IRID.
 335. P - N Blossomtime Compote.
 336. Dark Red Amethyst? - N 9 " Ruffled Poinsettia & Lattice footed bowl. SUPER BASE COLOR!
 337. Fantastic Rev Amb Opal - Fenton Waterlily 6 " footed berry bowl. RARE!
 338. Rare Rev Amb Opal - Fenton 6 " Two Row OE Basket 2 sides up.
 339. IG - N Round Bushel Basket.
 340. IB - N 8 Sided Bushel Basket. A BEAUTY!
 341. P - N 8 Sided Bushel Basket.
 342. IB - N Fine Cut & Roses Rose bowl. Normal Feet.
 343. Dark M - N Grape & Gothic Arches Tumbler. BEAUTIFUL!
 344. M - Dug Jewelled Heart Tumbler. SCARCE
 345. Pretty P - N Acorn Burrs Tumbler.
 346. Olive - N 11 1/2 " Thin Rib Vase.
 347. G - Fenton 10 3/4 " Rustic Vase.
 348. G - Fenton 7 " Long Thumbprint Vase w/ starred base.
 349. Great B - Fenton 19 " Rustic Funeral Vase, 5 1/8 " base, 7 " top.
 350. Scarce P - N 11 1/2 " Mid Size Plunger Base Tree Trunk Vase.
 351. G - N 9 1/2 " Thin Rib Vase, 5 " Flared Top. SUPER IRID.



- ___ 352. P - Mlbg. 9 7/8 " Hobnail Swirl Vase. GREAT RADIUM COLOR!
- ___ 353. G Alaskan Effect - N 15 3/4 " Wide Panel Funeral Vase, 4 3/4 " base, 7 " top.
- ___ 354. M - IMP 19 1/2 " Ripple Funeral Vase, 4 5/8 " base, 6 3/8 " top.
- ___ 355. Clear - IMP Swirled Morning Glory Vase w/ Marigold Overlay.
- ___ 356. Amber - IMP Gorgeous Loganberry Vase.
- ___ 357. P - Dug 9 1/2 " Target Vase, Tulip Top.
- ___ 358. A - Fenton 9 1/2 " Rustic Vase.
- ___ 359. M - 9 1/4 " Sunflower & Diamond Cylinder Vase. GREAT EXAMPLE.
- ___ 360. M - 9 3/4 " Diamond Block? European Vase.
- ___ 361. B - Fenton 8 " Butterfly & Berry Vase. ELECTRIC.
- ___ 362. B - 17 1/2 " Swung Spearhead & Diamond Vase.
- ___ 363. G - IMP 18 3/4 Ripple Funeral Vase, 4 3/4 " base, 7 " tilt top.
- ___ 364. Aqua - Westmoreland 8 " JIP vase.
- ___ 365. P - Westmoreland 8 1/2 " JIP vase.
- ___ 366. P - N 5 " Graceful Vase.
- ___ 367. Red Stretch - 6 " Bulbous Vase, polished pontil.
- ___ 368. Outstanding P - IMP Diamond Lace Water Pitcher. ELECTRIC!
- ___ 369. B - Bulbous Enameled Cherries Water Pitcher.
- ___ 370. Fantastic Smoke - IMP Cane & Star Milk Pitcher.
- ___ 371. Dark M - IMP 8 " Octagon Water Pitcher.
- ___ 372. White Milk Glass - Pearlized 16 1/2 " Coolie Hat Shaped Light Fixture.
- ___ 373. BA - Big Butterfly Hatpin
- ___ 374. Carl Burns Northwood Carnival Glass Guide (New)
- ___ 375. P - N Grape Arbor Tumbler base chip.
- ___ 376. Red - Fenton Vintage Grape Nut bowl.
- ___ 377. Honey Amber - JR Miller Cosmos & Cane Tumbler.
- ___ 378. G - N 9 3/4 " PCE Wishbone bowl.
- ___ 379. M - N 7 3/4 " Ruffled Wishbone footed bowl.
- ___ 380. M - N 8 1/2 " Ruffled Wishbone footed bowl.
- ___ 381. Pumpkin M - N Raspberry Compote.
- ___ 382. M - Dug 8 1/2 " Ruffled Pony bowl.
- ___ 383. P - Dug 9 " Dome Base Stippled Petals 10 ruffle bowl.
- ___ 384. M - Fenton 9 1/4 " 6 Ruffle Holly bowl.
- ___ 385. Smoke - IMP 6 " Round Three in one pattern bowl.
- ___ 386. G - N 5 " G&C Berry bowl.
- ___ 387. Tealish G - Westmoreland Louisa Rose bowl.
- ___ 388. G - Fenton 6 " 6 Ruffle Peacock Tail Hat Adv. Furniture 1910.

- ___ 389. M - Dug 10 " Ruffled Cosmos Vt.bowl.
- ___ 390. G - Fenton 5 " Round Little Flowers berry bowl.
- ___ 391. G - Cambridge 7 " Round Inverted Strawberry bowl.
- ___ 392. PO - Dug 3 1/4 " Squatty Lattice Points Vase, 6 " ruffled top.
- ___ 393. G - Fenton 9 " Tight CRE Coin Dot bowl.
- ___ 394. G - N Panel Holly Bon Bon 2 sides up.
- ___ 395. P - Dug 7 " CRE Ruffled Bells & Beads bowl.
- ___ 396. P - IMP Broken Arches Punch Cup.
- ___ 397. P - Dug S-Repeat Punch Cup.
- ___ 398. P - N G&C Punch Cup.
- ___ 399. Box lot of assorted Carnival Glass buttons (16 total).
- ___ 400. G - N Daisy & Plume Footed Rose bowl.
- ___ 401. Aqua - Interior Rib 5 " Ruffled Hat.
- ___ 402. A - N Lustre Flute 5 " Ruffled Hat.
- ___ 403. M - Dug Big Basketweave Handled Basket.
- ___ 404. A - Dug 7 " Ruffled Daisy Dear Bowl.
- ___ 405. G - N Lustre Flute Creamer.
- ___ 406. G - N 10 1/2 " Feathers Vase, Alaskan Irid.
- ___ 407. A - 7 1/4 " tall Long Thumbprint Vase.
- ___ 408. G - N 8 " Beads Ruffled bowl.
- ___ 409. Smoke - 7 1/2 " Interior Rib bowl.
- ___ 410. P - Fenton 6 " Ruffled Two Flowers Berry bowl.
- ___ 411. B - Fenton Vintage Small Epergne, cracked/glued.
- ___ 412. M - N Daisy & Plume Footed Rose bowl, large chip.
- ___ 413. Beautiful G - Fenton Orange Tree Loving Cup, cracked handle.
- ___ 414. A - Fenton Blackberry Spray Compote, base chip.
- ___ 415. B - Sowerby Hen on Nest, base chip.
- ___ 416. A - Fenton Flowers Rose bowl, Lg Ft Chip.
- ___ 417. Fantastic Smoke - IMP 9 " Shell Plate, Sm tip chip.
- ___ 418. G - Contemporary Signed I/G Three In One Toothpick.
- ___ 419. M - Fenton Kittens 4 sides up bowl, rim chip.
- ___ 420. Dark M - N Waterlily & Cattails Tumbler, base chip.

SPECIAL NOTE:

NO SUNDAY CALLS, PLEASE!
 Winning Absentee Bidders will be contacted
 Monday through Wednesday of the week following
 the Auction!
 Thank You!

2004 CALENDAR

February 21, 2004
CARNIVAL GLASS AUCTION
 at Boonville, Mo. Auction Gallery

March 27, 2004
CARNIVAL GLASS COLLECTION
 at Boonville, Mo. Auction Gallery

April 17, 2004
WWW.CGA CONVENTION
AT CROWN PLAZA HOTEL
 St. Louis, Missouri

For Free Color Catalogs & Information Write:
Mickey Reichel
 18350 Hunters Ridge Ct., Boonville, MO 65233
 or Call: 660-882-5292 days or
 660-882-5283 evenings
 E-mail: mreichel@undata.com

NEED QUALITY CARNIVAL GLASS

*"We don't want all the Business,
 Just Yours."*

WE DO AUCTIONS RIGHT!!

