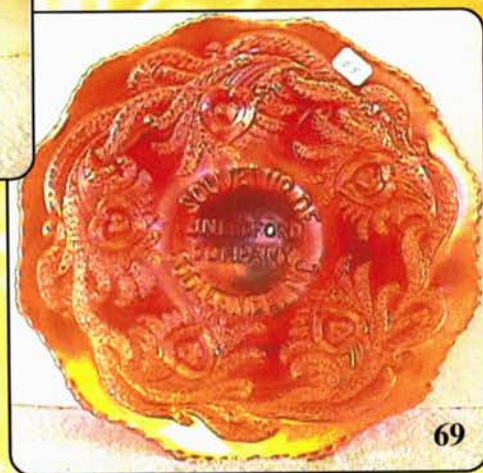
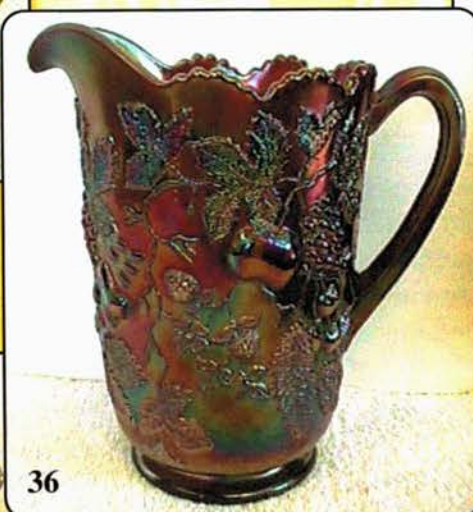
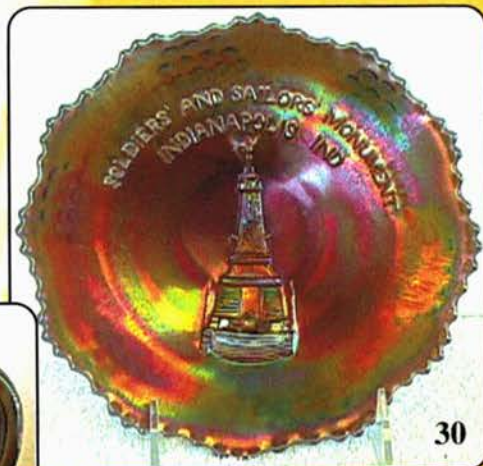


AUCTION

OUTSTANDING CARNIVAL GLASS

Saturday, November 22nd, 2003 -- 9:30 A.M.



Holiday Inn - Wentzville
900 Corporate Parkway (Exit 212a off of I-70)
Wentzville, Missouri
For Reservations call: 1-636-327-7001

Jim and Jan Seeck

Seeck Auctions

641-424-1116

J. Rothlock
J. Lee
E. Amoryan

Carnival Glass Auction

SATURDAY, NOVEMBER 22, 2003 -- 9:30 am
Holiday Inn - Wentzville, Missouri
NO BUYER'S PREMIUM

Seeck Auctions is very pleased to offer a fantastic Carnival Glass Collection for auction to the highest bidder. This should be one of the best auctions of the year with the opportunity to buy some of the top rarities in the country. The auction is full of many extreme rarities, including whimses, advertising, plates, pitchers & tumblers. Also there is some very fine newer glass and club commemoratives. An auction to remember. We are happy to be back at the Wentzville Holiday Inn. Make your reservations early!

Don't forget to check out our website for lots of color pictures.
www.seeckauction.com

Reservations can be made by calling the hotel directly at 636-327-7001. Please mention the "Seeck Auction"

Preview: Friday 3 pm - 8 pm.

Terms: Cash. Checks accepted with proper I.D.

ABSENTEE BID POLICY

1. Write-in bids will be accepted by sending the numbers of the item(s) desired and the amount bid on each to:
Seeck Auctions, PO Box 377, Mason City, Iowa 50402.
2. If known by Auction Company, bids may be done over the telephone. (641)424-1116.
3. You may **email** your bids to us: **jimjan@seeckauction.com** Continue to include the numbers of the item(s) you would like to bid on and amount bid on each, please include your telephone number.
4. There is a \$5 handling charge for each successful bid. Shipping and insurance charges are additional.
5. Bidders will be notified by phone if their bid(s) are successful. This call will be made 1 - 3 days after the auction.
6. Please have all bids in by **Wed., Nov. 19th**. All bids (by mail, phone or **email**) after this date may not be carried out.
7. Please place bids in the following increments: \$1 to \$300 - \$5 increments \$300 up - \$25 increments.
8. **If you do not receive an item that sold for less than your bid, assume we cancelled your bid because the piece of glass had below average color, manufacture problem, damage or was not listed correctly.**
9. Auction results are posted on our website within 5 days of the auction (depending on drive time home from the sale.) Also results are available in many of the club newsletters.

- | | | | |
|------------|---|-------------|--|
| <u>65</u> | 1. 1982 ICGA Frolicking Bears spittoons(3) - red - choice | <u>675</u> | 13. 1981 ICGA Whimsy Frolicking Bear's hldd pitcher or creamer - aqua opal |
| <u>65</u> | 2. 1982 ICGA Frolicking Bears spittoon w/flat top - red | <u>65</u> | 14. 1998 ICGA Frolicking Bear's spittoon - green opal |
| <u>85</u> | 3. 1982 ICGA Whimsy Frolicking Bear's spittoon - red w/satin finish - has flat top | <u>105</u> | 15. 1998 ICGA Whimsy Frolicking Bear's JIP vase - purple |
| <u>265</u> | 4. 1982 ICGA Whimsy Frolicking Bear's spittoon - Iridized Chocolate glass | <u>275</u> | 16. 1998 ICGA Whimsy Frolicking Bear's spittoon - white opal w/floral decoration by Cunningham |
| <u>135</u> | 5. 1983 ICGA Frolicking Bear's spittoon - vaseline opal w/marigold overlay - one of the next two lots is a whimsy the other isn't | <u>85</u> | 17. 1993 ICGA Frolicking Bear's tumbler - amber |
| <u>155</u> | 6. 1983 ICGA Frolicking Bear's spittoon - vaseline opal w/no marigold overlay | <u>225</u> | 18. 1997 ICGA Whimsy Frolicking Bear's mug - plum opal w/Hummingbirds & floral decoration by Spindler |
| <u>135</u> | 7. 1983 ICGA Whimsy Frolicking Bear's spittoon - vaseline opal w/coralene decoration | <u>325</u> | 19. 1997 ICGA Whimsy Frolicking Bear's tumbler - celest blue - has coralene leaves & gold bears, decorated by Spindler |
| <u>215</u> | 8. 1983 ICGA Whimsy Frolicking Bear's spittoon - burmese | <u>125</u> | 20. 2001 ICGA Frolicking Bear's tumbler - pink opal |
| <u>180</u> | 9. 1981 ICGA Frolicking Bear's spittoon - aqua opal w/marigold overlay | <u>135</u> | 21. 2001 ICGA Whimsy Frolicking Bear's spittoon - pink opal |
| <u>160</u> | 10. 1981 Whimsy Frolicking Bear's spittoon - aqua opal - has no marigold overlay on top of spittoon | <u>115</u> | 22. 1988 ICGA Basketweave Open Edge basket w/handle - vaseline opal |
| <u>170</u> | 11. 1981 ICGA Whimsy Frolicking Bear's spittoon - ice blue opal | <u>75</u> | 23. 1986 ICGA Poppy rosebowl - green opal |
| <u>200</u> | 12. 1981 ICGA Whimsy Frolicking Bear's double hldd sugar or vase - aqua opal | <u>110</u> | 24. 1986 ICGA Poppy rosebowl - burmese |
| | | <u>1200</u> | 25. M'burg Big Fish tri-cornered bowl - green - radium & fantastic, an extreme rarity, highly desirable <i>Hank</i> |
| | | <u>200</u> | 26. Inverted Thistle 8" round bowl - amethyst - scarce |

- 2150 27. Leaf & Beads rosebowl - ice green - very rare color & nice, minor damage to the back of a foot
- 300 28. Leaf & Beads rosebowl - aqua opal - pastel, pretty
- 65 29. Wild Rose open edge bowl - purple - very pretty, nick on outside edge
- 15500 30. **Soldiers & Sailors Monument, Indianapolis, Ind. 7" plate - blue - only one I have seen, a top piece in our collecting hobby, super rare, extremely desirable, super pretty. WOW!**
- 85 31. M'burg Holly Sprig card tray shaped bon bon - amethyst - radium
- 45 32. M'burg Holly Sprig card tray shaped bon bon - marigold - satin
- 215 33. Oriental Poppy tumbler w/ribbed interior - ice blue - pretty, scarce
- 40 34. Oriental Poppy tumbler - purple - nice
- 2525 35. Oriental Poppy tumblers(5) - marigold - choice
- 8000 36. **M'burg Multi Fruits & Flowers collar based water pitcher - amethyst - extremely rare & super pretty, a top water pitcher, WOW!** 47
- 75 37. Florentine 10" candlesticks - marigold - sold as pair
- 90 38. Florentine candlesticks - celest blue - sold as pair
- 70 39. Florentine candlesticks - marigold - sold as pair
- 2400 40. **M'burg Peacock master IC shaped bowl - amethyst - super radium irid. on this very rare bowl, nice**
- 3300 41. **M'burg Peacock master IC shaped bowl - marigold - radium & super pretty, may be the rarest color**
- 20 42. Fenton's Peacock at Urn ruffled compote - marigold
- 17000 43. **Roses & Greek Key square shaped plate - smoke - ultra rarity, only one known in this color, plus has fantastic irid., WOW!** 52
- 105 44. M'burg Leaf & Little Flowers ruffled compote - amethyst - radium, has been lightly buffed on base
- 165 45. M'burg Leaf & Little Flowers ruffled compote - marigold - radium, nice
- 350 46. Orange tree 8 pc. punch set - blue - very scarce, pretty 3 w/ 5022
- 85 47. White Oak tumblers(6) - marigold - scarce, choice
- 75 48. Dahlia tumbler - white - nice
- 65 49. Dahlia tumbler - purple - nice
- 3600 50. **Roods Chocolates advertising 6" plate - amethyst - super rare, a very pretty piece**
- 1300 51. Sterling Furniture Co. advertising hand grip plate - amethyst - super nice irid., rare
- 140 52. M'burg Primrose IC shaped bowl - green - radium & super, scarce shape
- 115 53. M'burg Primrose ruffled bowl - green - fantastic radium irid.
- 200 54. Shell & Sand 9" plate - green - sorta unusual green, sorta teal, sorta helios
- 5000 55. **M'burg Fleur De Lis domed ftd square shaped bowl - vaseline - don't need a black light to see what color it is, super super irid. extremely rare, couple of minor pinpoints on the sawtooth edge of base which is very typical for this base**
- 35 56. Knotted Beads 13" vase - marigold
- 1050 57. Acorn Burrs water pitcher - marigold - super dark, super pretty
- 60 58. Acorn Burrs tumbler - marigold

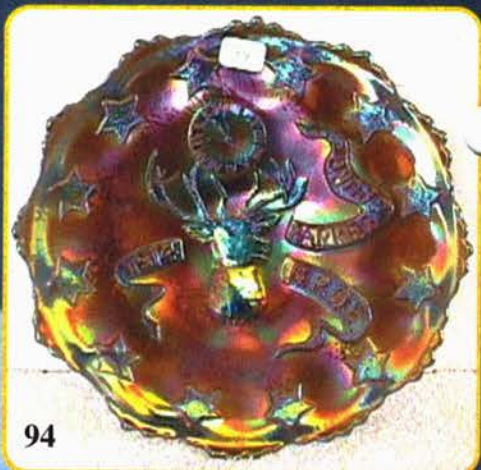
- 2000 59. **Greengard Furniture Co. advertising handgrip plate - amethyst - extremely rare adv. piece, not many around, pretty**
- 1700 60. Exchange Bank advertising 6" plate - amethyst - very rare plate, not many around
- 650 61. Wisteria tumbler - ice blue - super pretty, rare
- 130 62. Grape Arbor tumbler - ice blue - very nice, scarce
- 40 63. Grape Arbor tumbler - marigold - dark
- 750 64. M'burg Trout & Fly IC shaped bowl - green - satin & super, very scarce
- 625 65. M'burg Trout & Fly IC shaped bowl - marigold - also satin & super
- 215 66. Inca bottle - amethyst
- 225 67. Inca bottle - marigold - has paper label
- 200 68. Pharoah bottle - marigold
- 9000 69. **J.N. Ledford Company, Cooleemee NC/Heart & Vine 9" plate - marigold - extremely rare & highly desirable, super pretty, a must for adv. & plate collectors**
- 155 70. Australian Kookabura ruffled sauce - purple - pretty
- 95 71. Australian Kookabura ruffled sauce - marigold - nice
- 1000 72. M'burg Hanging Cherries water pitcher - green - super rare, super pretty, an outstanding example
- 280 73. M'burg Hanging Cherries tumbler - green - nice
- 115 74. M'burg Hanging Cherries Variant tumbler - green - nice
- 1800 75. M'burg Hanging Cherries water pitcher - marigold - very dark, as nice as I have ever seen
- 230 76. M'burg Hanging Cherries tumbler - marigold - nice
- 145 77. Wreath Cherry master banana boat - white w/gold - very scarce color
- 1400 78. Norris N. Smith advertising 6" plate - amethyst - super pretty example, very rare
- 950 79. Fern Brand advertising double handgrip plate - amethyst - super pretty & scarce
- 145 135 125 80. God & Home tumblers(3) - blue - scarce & all nice, choice
- 875 81. M'burg Diamonds tumbler - marigold - nice
- 100 82. M'burg Diamonds tumbler - green - nice
- 450 83. Good Luck ruffled bowl w/ribbed back - blue - electric irid., very nice bowl
- 65 65, 50, 40, 35 84. Wishbone 7 pc. water set - marigold - very rare set, tumblers will be sold separately, and choice, pitcher has crack in handle 145
- 50 85. Captive Rose ruffled bowl - marigold - nice
- 2200 86. **Rose Show ruffled bowl - lime green opal - very rare & desirable bowl, not many around, super pretty irid. & opal**
- 900 87. Rose Show ruffled bowl - aqua opal - super pretty, nice
- 95 88. Ragged Robin 3 in 1 edge bowl - marigold - nice
- 700 89. M'burg Nesting Swan deep round bowl - green - radium & nice, very unusual shape, RARE
- 225 90. M'burg Nesting Swan ruffled bowl - green - satin & nice
- 95 91. Honeycomb rosebowl - peach opal - nice
- 65 92. Honeycomb pinched in rosebowl - antique green
- 35 93. Four Pillars 10" vase - marigold
- 2200 94. 1914 Parkersburg Elks 7" plate - blue - as nice as I have ever sold, good mold, great irid., very hard to find



40



41



94



329



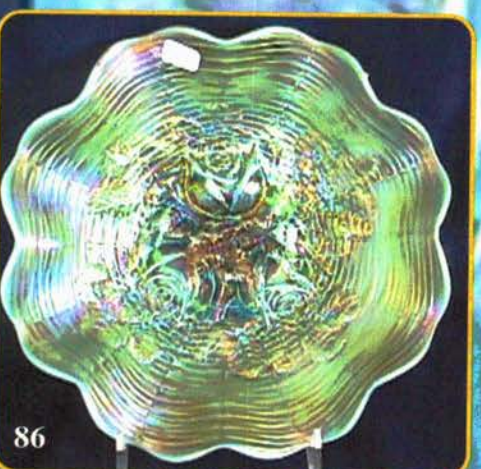
290



322



296



86



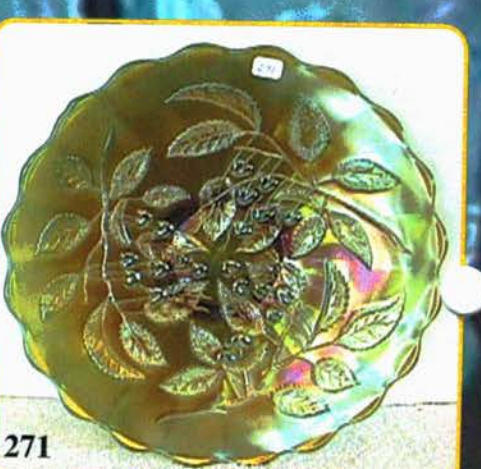
89



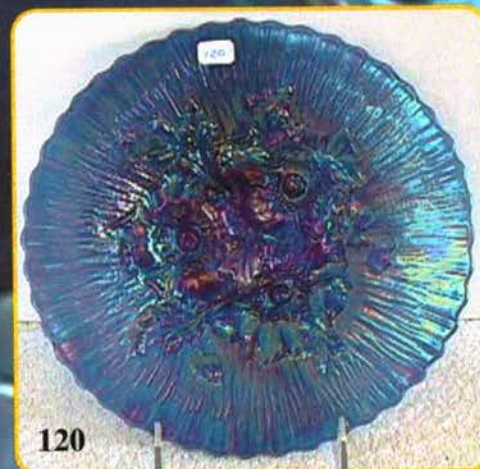
330



55



271



- 900 95. 1910 Detroit Elks ruffled bowl - amethyst - again great mold & super irid., rare
- 850 96. 1910 Detroit Elks IC shaped bowl - blue - very scarce, has heat check in base
- 2100, 800, 700 97. M'burg Morning Glory tumblers(3) - amethyst - super rare tumblers, choice
- 55 98. Paneled Dandelion tumbler - amethyst - nice
- 105 99. Greek Key tumbler - marigold - dark
- 1800 100. **M'burg Multi Fruits & Flowers 6 pc. punch set - amethyst - super nice set, very rare**
- 55 101. M'burg Grape Wreath 7" IC shaped bowl - marigold - radium, nice
- 625 102. M'burg Hobnail Swirl spittoon - marigold - dark & nice
- 1500 103. Horse Medallion ftd nut bowl - red - very rare, nice
- 325 104. Cambridge ftd vase - light marigold
- 2600 105. Dorsey & Funkenstein advertising 6" plate - amethyst - very very rare plate, not many around
- 1100 106. Ogden Furniture advertising handgrip plate - amethyst - very rare & pretty
- 85 107. Northwoods #636 candy jar - jade blue
- 45 108. Northwoods #636 candy jar - celest blue w/gold decoration
- 45 109. Fenton's #p candy dish - celest blue
- 600 110. M'burg Feather & Heart water pitcher - green - super nice example, rare
- 165 111. M'burg Feather & Heart tumbler - green - scarce
- 300 112. M'burg Feather & Heart water pitcher - amethyst - very rare, does have minor nick on top edge
- 30 113. M'burg Feather & Heart tumbler - amethyst - nice - nicks on base
- 2800 114. M'burg Bernheimer Brothers/Many Stars ruffled bowl - blue - extremely rare & desirable, nice
- 75 115. M'burg Blackberry Wreath 3 in 1 edge bowl - green - satin
- 1300 116. Central Shoe Store advertising 6" plate - amethyst - very pretty example of a rare plate
- 1100 117. Dreibus Parfait advertising handgrip plate - amethyst - super pretty, scarce
- 105 118. Northwoods #719 trumpet candlesticks - amethyst - sold as pair
- 75 119. Northwoods #719 trumpet candlesticks - celest blue - sold as pair
- 4900 120. **Poppy Show 9" plate - blue - electric & -48 fantastic, rare & desirable**
- 85 121. Australian Swan ruffled sauce - purple
- 105 122. Australian Swan ruffled sauce - marigold
- 700 123. M'burg Gay Nineties tumbler - amethyst - very nice & very rare
- 135 124. Grapevine Lattice tumbler - white - pretty
- 25 125. Grapevine Lattice tumbler - marigold
- 205 126. Near Cut Souvenir tumblers(2) - marigold - one from Idaho Falls ID, the other from Hamilton ONT., choice
- 2500 127. **M'burg Dolphin compote - amethyst - super pretty, extremely rare & desirable**
- 600 128. M'burg Roses & Fruits bon bon - green - radium & super, very rare item
- 175 129. M'burg Holly Sprig tri-cornered 6" bowl - green - radium & nice
- 105 130. M'burg Holly Sprig tri-cornered 6" bowl - marigold - also radium & nice
- 800 131. Fluffy Peacock 7 pc. water set - amethyst - super pretty pitcher, nice set, scarce
- 850 132. Fluffy Peacock water pitcher - blue - super pretty, rare color, nice
- 120 133. Fluffy Peacock tumbler - blue - nice
- 20 134. Fluffy Peacock tumbler - marigold - nice, chip on base
- 4000 135. **M'burg Unlettered Courthouse 3 in 1 edge bowl - amethyst - super pretty & very very rare, WOW!**
- 2300 136. **M'burg Courthouse ruffled bowl - lavender - very rare color & nice, satin irid. NEAT!**
- 350 137. M'burg Courthouse IC shaped bowl - amethyst - very pretty, has a small spot of epoxy on base
- 1200 138. M'burg Courthouse round bowl - amethyst - a rare, deeper shape than an IC bowl, nice
- 75 139. Butterfly bon bon - marigold - nice
- 625 140. Ten Mums tankard water pitcher - marigold - super pretty, even irid. from top to bottom
- 60 141. Ten Mums tumbler - marigold
- 375 142. M'burg Leaf & Little Flowers sherbert shaped compote - green - radium, nice
- 325 143. M'burg Leaf & Little Flowers sherbert shaped compote - amethyst - radium, nice
- 155 144. M'burg Leaf & Little Flowers sherbert shaped compote - marigold - satin
- 950 145. NUART Homestead chop plate - white - super pretty & rare, has great mold strike
- 145 146. Heavy Grape 8" plate - purple - pretty
- 155 147. Heavy Grape 8" plate - smoke - rare color, has a few scratches
- 1900 148. **Imperial Grape 9" plate - purple - fantastic electric irid., very very rare plate**
- 900 149. Dragon & Lotus IC shaped bowl - marigold on moonstone - pastel & nice, rare color
- 700 150. Holly ruffled bowl - marigold on moonstone - very rare, nice bowl
- 600 151. Double Star 7 pc. water set - green - very hard to find set, a Cambridge classic
- 750 152. Captive Rose 9" plate - amethyst - rare plate, nice
- 650 153. Stork & Rushes 7 pc. water set - blue - very scarce set, nice
- 275 154. Cambridge Nearcut decanter w/clear stopper - green - extremely rare item, has a crack
- 80 x 2 155. Cambridge Nearcut cologne bottles w/no stoppers - green - choice
- 45 156. Buzz Saw small size cruet - green - has clear stopper
- 2700 157. **Orange Tree hatpin holder - iridized chocolate glass - ultra rare item, only a few known, a top Fenton rarity**
- 45 158. 1909 Louisville Shriner's champagne - clear
- 55 159. 1910 New Orleans Shriner's champagne - clear
- 40 160. 1911 Rochester NY Shriner's champagne - clear
- 850 161. **Stippled Grape & Cable punch cup - aqua opal - very rare & desirable cup, very nice**
- 6 x 15 162. Stippled Grape & Cable punch cups(6) - blue - choice
- 50 163. Cambridge Hobstar punch cup - marigold
- 155 164. 16 wood cases with buttons - choice
- 130 165. 12 cards with buttons - choice
- 85 166. 1984 ACGA Seacoast spittoon - red
- 95 167. 1982 ACGA Seacoast spittoon - peach opal
- 105 168. 2002 ACGA Seacoast spittoon - ice green opal
- 115 169. 1983 ACGA Seacoast spittoon - green
- 95 170. 1985 ACGA Seacoast spittoon - celest blue
- 115 171. 1985 ACGA Seacoast whimsey spittoon - celest blue - has ruffled top

Bolo
30 x 6, '35

- 155 172. 1989 ACGA Morning Glory pitcher - red
 90 173. 1987 ACGA Morning Glory pitcher - green
 80 174. 1988 ACGA Morning Glory pitcher - purple
 120 175. 1986 ACGA Morning Glory pitcher - marigold
 30 176. 1985 HOACGA bell - red
 65 177. 1985 HOACGA whimsey bell - red w/iridized milk glass handle
 45 178. 1985 HOACGA whimsey bell - red slag
 25 179. 1986 HOACGA bell - green opal
 30 180. 1988 HOACGA bell - marigold
 35 181. 1987 HOACGA bell - blue
 30 182. 1989 HOACGA bell - aqua
 115 183. 1974 HOACGA 7 pc. water set - red
 40 184. 1982 HOACGA Corn vase - ice blue
 75 185. 1984 ICGA Loins rosebowl - blue
 155 186. 1984 ICGA Lions whimsey handled basket - blue
 105 187. 1984 ICGA Lions whimsey rosebowl w/white & red applied glass
 140 188. Fenton Mermaid vase - celest blue
 145 189. Fenton's Bicentennial covered compote - blue - very few of these made
 375 190. 1975 Fenton's Hanging Hearts - blue - #71 of 600
 80 191. 1993 ACGA Inverted Strawberry spittoon - red
 105 192. 1982 LLCGC Floral rosebowl - aqua opal
 65 193. 1982 LLCGC Floral rosebowl - peach opal
 400 194. **M'burg Wild Rose w/Ladies Medallion lamp - green - an ultra rare lamp, highly desirable and pretty, has 6 1/2" base**
 1800 195. M'burg Wild Rose lamp - amethyst - very pretty, rare, has 6" base *had as medallion*
 2000 196. M'burg Wild Rose lamp - marigold - super pretty, rare, has a 2" crack in the top bowl, has 6 1/2" base
 350 197. Chatelaine tumbler - purple - very pretty
 35 198. Singing Birds tumbler - green
 5 199. Singing Birds tumbler - marigold
 1100 200. Brazier's Candies advertising 6" plate - very rare, nice
 900 201. Brazier's Candies advertising handgrip plate - amethyst - super nice, scarce
 85 202. Australian Magpie ruffled sauce - marigold - nice
 900 203. Dozen Roses ftd round bowl - purple - very pretty, rare
 55 204. Morning Glory 5" vase - marigold
 4750 205. **M'burg Whirling Leaves 3 in 1 edge bowl - blue - super pretty & extremely rare, only a few known**
 325 206. M'burg Whirling Leaves tri-cornered crimped edge bowl - green - radium & nice
 175 207. M'burg Whirling Leaves ruffled bowl - green - super pretty radium irid.
 1200 208. Blackberry Block tankard water pitcher - green - very rare & highly desirable, nice
 26 209. Blackberry Block tumbler - blue
 500 210. Quill water pitcher - marigold - very scarce & desirable *get picture*
 115 211. Quill tumbler - marigold - nice
 185x2 212. Quill tumblers(2) - purple - both super - choice
 1800 213. Illinois Soldiers & Sailors 7" plate - blue - very pretty plate, rare
 1900 214. Illinois Soldiers & Sailors 7" plate - marigold - dark & pretty, very rare & desirable
 800 215. N's Peach tumbler - blue - super
 25x2 216. Dugan Peacock at the Fountain tumblers(2) - blue - choice
 40 217. Orange Tree Scroll tumbler - marigold
 2400 218. **M'burg Hobstar & Feather 14 pc. punch set w/Fleur De Lis interior - green - super super rare & very pretty, has a marigold base that is painted to look green**
 245 219. M'burg Holly Sprig 6" IC sauce - marigold - dark radium & super
 750 220. M'burg Hanging Cherries round compote - amethyst - super pretty, very rare
 300 221. Florentine 8" candlestick - red - very scarce color
 50 222. Florentine 8" candlestick - celest blue
 35 223. Florentine 8" candlestick - marigold
 1100 224. Stippled Strawberry 9" plate w/ribbed back - purple - super pretty example of this rare plate
 115 225. Holly IC shaped bowl - blue - nice
 2100 226. **Oriental Poppy 6 pc. water set - ice blue - super rare item, pitcher is ribbed, frosty w/ great irid., tumblers sold separately and are not ribbed**
 85x5
 1200 227. Peacocks ruffled bowl - aqua - rarer color than aqua opal, super nice irid.
 1400 228. Little Flowers chop plate - marigold - very rare & nice, not many of these around
 1000 229. Dugan Peacock at the Fountain 7 pc. water set - amethyst - scarce & super, might be the best I've sold
 1300 230. Geo. W. Getts Pianos advertising 6" plate - amethyst - very nice example, rare
 1000 231. Davidson Society Chocolates advertising double handgrip plate - amethyst - pretty & scarce
 650 232. Loganberry vase - marigold - dark w/super color from top to bottom
 400 233. Imperial Grape water carafe - purple - super pretty, scarce
 425 234. Windmill deep round bowl - marigold on milk glass - extremely rare color, only one I know of, nice
 170 235. M'burg Seaweed 10" IC shaped bowl - amethyst - satin & super, very rare, has chip on base
 215 236. M'burg Seaweed 3 in 1 edge 10" bowl - marigold - satin, scarce
 95 237. M'burg Holly Sprig bon bon - amethyst - radium
 115 238. Windmill tumbler - purple - pretty
 10 239. Soda Gold tumbler - marigold
 35 240. Milady tumbler - marigold
 7000 241. **M'burg Cleveland Memorial Ashtray - amethyst - extremely rare & highly desirable item, radium & nice, another WOW!**
 650 242. Picture Frame - purple - very pretty & rare, only two that I know of, has some manufacture problems on edges
 30 243. Premium candlesticks - marigold - sold as pair
 300x2 244. N's Corn vases(2) - marigold - one has pinhead on base, other has minor spot on top, scarce, choice
 165 245. Strawberry 9" plate w/BW back - green
 1750 246. M'burg Marilyn water pitcher - green - fantastic irid. on this rare pitcher, best I've seen!
 190 247. M'burg Marilyn tumbler - green - scarce, nice
 600 248. M'burg Marilyn water pitcher - marigold - super dark & super pretty, best marigold one I have seen
 150 249. M'burg Marilyn tumbler - marigold - super nice
 800 250. M'burg Marilyn 7 pc. water set - amethyst - very rare set, nice, not many sets around





50



59



254



116



213



78



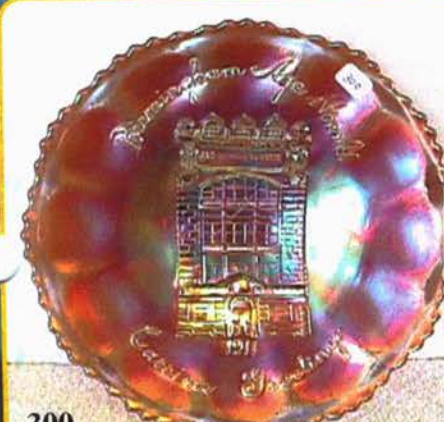
230



214



279



300



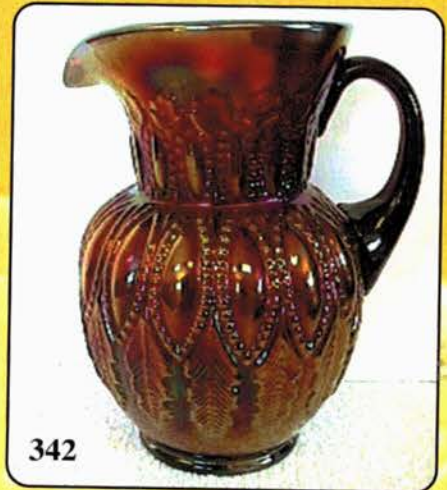
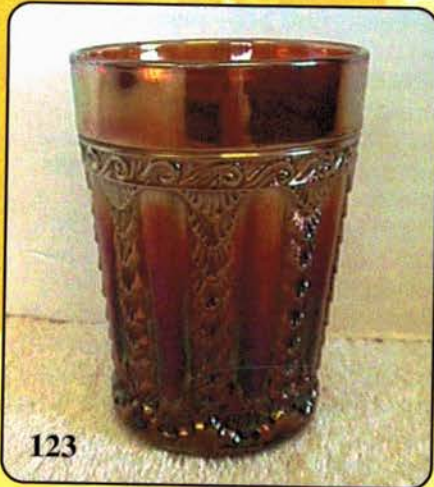
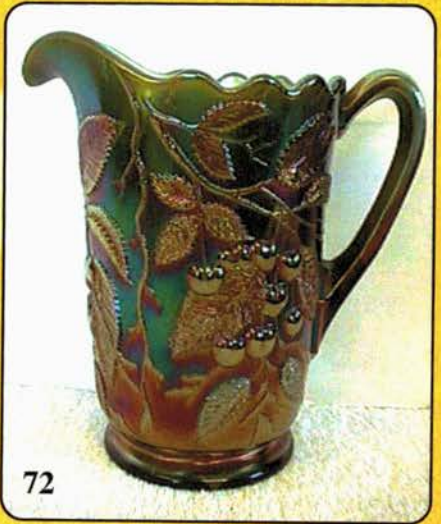
317



335

- 190 251. See, Speak or Hear No Evil Monkey bottle - white - different
- 125 252. Roundup low ruffled bowl - purple - fantastic, scarce
- 200 253. Brooklyn Bridge 10 ruffled bowl - marigold - scarce, nice
- 1750 254. Broekers Flour advertising 6" plate - amethyst - super rare, nice
- 900 255. Utah Liquor Co. advertising double handgrip plate - amethyst - very rare, nice
- 65 256. Wishbone tumbler - purple - nice
- 50 257. Stork & Rushes w/beads tumbler - blue - nice
- 10 258. Stork & Rushes tumbler w/lattice - marigold
- 165, 100 259. Scroll Embossed ruffled saucers (2) - purple - super super, choice
- 275 260. Embroidered Mums ruffled bowl - purple - scarce
- 1200 261. Lotus & Grape 9" plate - amethyst - very rare plate & nice, highly sought after Fenton plate
- 700 262. Enameled Dianthus 7 pc. water set - white - very rare set, not many around *ribbed tumbler*
- 1300 263. Hearts & Flowers ruffled bowl - green - very rare color for this pattern, nice
- 350 264. Hearts & Flowers ruffled bowl - ice blue - scarce, nice
- 1600 265. **M'burg Strawberry Wreath large square shaped bowl - vaseline - a super rarity, only on I have seen, has marigold overlay, nice**
- 225 266. M'burg Strawberry Wreath large square shaped bowl - amethyst - radium & super, very rare, buffed chip on back of edge
- 350 267. M'burg Strawberry Wreath 8" square shaped bowl - amethyst - super pretty, rare shape
- 350 268. Stippled Good Luck PCE bowl - blue - scarce, nice
- 10 269. Grape Leaves ruffled bowl - marigold *N*
- 275 270. Cambridge Forks cracker jar - green - no lid
- 3700 271. M'burg Hanging Cherries chop plate - green - satin & nice, extremely rare, minor chips on top of collar base
- 185 272. Little Stars 7" ruffled bowl - green - satin, nice
- 400 273. M'burg Peacock at Urn mystery bowl - green - super pretty satin irid., scarce
- 1700 274. **Roses & Ruffles GWTW lamp - marigold on moonstone - super pretty & very rare, highly desirable**
- 135 275. Butterfly & Floral lamp - irid. pink - has milk glass shape, different
- 135 276. Floral & Wheat lamp - opaque white - has etched shade
- 225 277. Butterfly lamp - green - different
- 55 278. Enameled Castle Scene lamp shade - marigold
- 1600 279. Jockey Club advertising 6" plate - amethyst - has a light base color & pretty irid., a novice might call this marigold
- 425 280. Issac Benesch & Sons advertising ruffled bowl - amethyst - scarce, nice
- 45 281. Apple Tree tumbler - blue - nice
- 45 282. Heavy Iris tumbler - marigold - nice
- 45 283. Imperial Grape tumbler - marigold
- 1600 284. **M'burg Feather & Heart whimsy hair receiver - marigold - made from tumbler, super neat, highly desirable** *47*
- 135 285. M'burg Holly Sprig 7" round bowl - green - radium & nice
- 165 286. M'burg Peacock berry sauce - amethyst - radium & super
- 275 287. Panther ruffled sauce - red - has chip on bottom of one foot
- 10 288. Fine Cut Flower ruffled compote - marigold
- 400 289. Blackberry Open Edge ruffled hat - red - nice, scarce
- 900 290. M'burg Trout & Fly square shaped bowl - marigold - satin & super, very rare
- 500 291. M'burg Trout & Fly ruffled bowl - amethyst - satin & nice, very scarce
- 575 292. M'burg Holly Sprig 8" round bowl w/crimped edge - amethyst - super pretty radium irid.
- 25 293. Concave Diamond tumbler - celest blue
- 10 294. Floral & Grape tumbler - blue
- 100 295. Blueberry tumbler - marigold - nice
- 1000 296. M'burg Peacock at Urn master IC shaped bowl - green - super satin irid., very rare & desirable
- 350 297. M'burg Peacock deep ruffled bowl - marigold - radium & nice
- 115 298. M'burg Peacock 6" plate or low IC shaped bowl - amethyst - one of those border line calls
- 25 299. Fenton's #8 candy jar w/etching - white
- 200 300. **Birmingham Age Herald 9" plate - amethyst - super example, very rare & highly desirable**
- 45 301. Souvenir of Millersburg Glass Co. Founded 1909 toothpick - marigold
- 110 302. Panther ftd master berry bowl - marigold - nice
- 250 303. M'burg Feather & Heart water pitcher - green - rare & nice, nicks along top edge
- 325 304. M'burg Zig Zag IC shaped bowl - amethyst - radium & nice
- 800 305. M'burg Night Stars bon bon - amethyst - super irid., very rare, radium
- 5x4 306. Six stretch glass sherberts - white & celest blue - choice
- 225 307. Fluffy Peacock hatshape whimsy - amethyst - never seen this before, does have some damage on the base
- 175 308. Holly 9" plate - marigold - nice
- 700 309. Butterfly & Berry 7 pc. water set - blue - very rare set, nice
- 95 310. Wishbone ftd ruffled bowl - marigold
- 700 311. Vintage ruffled bowl - Persian blue - very rare color, not many around, nice
- 3100 312. **M'burg Acorn ruffled compote - green - extremely rare & very desirable compote, super pretty radium irid.** *47*
- 115 313. M'burg Grape Wreath Variant 8" IC shaped bowl - green - radium & pretty
- 115 314. M'burg Rays & Ribbons 3 in 1 edge bowl - marigold - satin & pretty
- 45 315. Paperweight from the Little Swiss Flea Market, Millersburg Ohio
- 400 316. Four Flowers 9" plate - green - pretty
- 2200 317. **M'burg 1910 Detroit Elks ruffled bowl - amethyst - radium & rare, very nice**
- 200 318. M'burg Fleur De Lis IC shaped bowl - marigold - radium, nice
- 85 319. M'burg Holly Sprig handled nappy - marigold - dark radium irid.
- 500 320. **Orange Tree whimsy syrup - blue - made from the mug, this is an outstanding rarity, a great whimsy, NEAT!** *47*
- 40 321. Fenton Flute 9" vase - blue

- 3408 322. M'burg Hanging Cherries 6" plate - marigold - radium & dark, a very rare little plate
- 145 323. M'burg Holly Whirl ruffled bowl - green - satin
- 1000 324. M'burg Hobstar & Feather diamond shaped dish - marigold - part of the bridge set, extremely rare item
- 200 325. Pony 10 ruffled bowl - amethyst - pretty
- 1200 326. M'burg Blackberry Wreath 10" ruffled bowl - blue - pretty, extremely rare color
- 155 327. M'burg Holly Whirl deep round bowl - green - radium & nice, the blank shape
- 750 328. M'burg Big Fish IC shaped bowl - amethyst - satin & super, very rare
- 3500 329. **N's Stippled Peacock at Urn master IC bowl - smoke - very rare & pretty, not many chances for this one**
- 2200 330. **N's Stippled Peacock at Urn master IC bowl - blue - electric & super, as nice as these get, very rare**
- 95 85 331. N's Peacock at Urn IC sauces(2) - blue - nice, choice
- 125 332. Near Cut Souvenir creamer - marigold - Souvenir of Amana Iowa *7 1/2 inch tall*
- 25 333. Beaded Shell mug - blue - nice
- 15 334. Butterfly & Fern tumbler - marigold
- 1300 335. Ballard advertising 6" plate - amethyst - very rare, nice
- 1500 336. Eagle Furniture Co. advertising 6" plate - amethyst - also very rare & nice
- 450 337. Beaded Cable rosebowl - blue opal - very unusual rosebowl *Beaded Basket*
- 200 338. Beaded Cable rosebowl - aqua opal - very nice
- 15 339. Near Cut decanter stopper - clear, and Diamond & Starburst stopper - marigold - both sold together, both have damage
- 400 340. M'burg Leaf & Little Flowers sherbert shaped compote - amethyst - radium, nice
- 145 341. M'burg Leaf & Little Flowers sherbert shaped compote - marigold - satin
- 5500 342. **M'burg Perfection water pitcher - amethyst - radium & fantastic, a carnival classic, extremely rare**
- 5500 400 343. M'burg Perfection tumblers(2) - amethyst - both super, choice
- 145 344. Swan vase w/tri-corned crimped edge - blue - irid. on interior only, Contemporary
- 35 345. Fenton's Snowflake handled basket - green opal - Contemporary
- 185 346. Fenton's Burmese Ocean Floor decorated vase - decorated by D.Fredrick #271 of 750 made
- 165 347. Vintage Grape spittoon - red - Gibson 2000, Contemporary
- 45 348. Hanging Hearts decorated vase - Gibson 1998, Contemporary
- 50 349. Bleeding Heart rosebowl - peach opal - Contemporary
- 35 350. Bleeding Heart bowl - peach opal - Contemporary
- 15 351. Fenton's Bleeding Heart Bell - amber - Contemporary
- 25 352. Fenton's Bleeding Heart bell - marigold on milk glass - Contemporary
- 15 353. Fenton's Bleeding Heart bell - iridized milk glass - Contemporary
- 50 354. 1981 Lincoln Land Bleeding Heart bell - peach opal
- 30 355. 1981 Lincoln Land flared out Bleeding Heart bell whimsey - peach opal
- 30 356. 1981 Lincoln Land flared in Bleeding Heart whimsey bell - peach opal
- 30 357. 1980 Lincoln Land Hobnail bell - aqua opal
- 20x2 358. 2003 Woodlands advertising bowls(2) - blue - choice
- 65 359. 1980 Fishermans mug - decorated custard
- 375 360. Cambridge Peacock 7pc. water set - old pattern glass
- 325 361. Acorn & Squirrel ruffled compote - old blue opal - not carnival
- 20 362. Fenton's Glass Blowers stein - purple - Contemporary
- 30 363. 1983 Westmoreland stein - red - #308 of 1000 made
- 190 364. Contemporary Homestead lamp - white
- 45 365. 1977 Lincoln Land table favor mug - blue; 1978 Lincoln Land table favor mug - vaseline; Inverted Strawberry hdd basket - purple; Nearcut pattern hdd nappy - purple; 1985 Haynes Car commemorative paperweight - vaseline; Butterfly ashtrays(2) - marigold; 1991 ACGA Inverted Strawberry hdd basket - red; Dagenhart Indian Tomahawk - blue - All Sold Choice
- 30 366. 1971 Holmes County Antique festival tumbler - blue; 1984 ACGA Inverted Strawberry rosebowl(2) - vaseline; 1984 Inverted Strawberry rosebowl - blue; Daisy & Button cream and sugar - purple; 1982 HOACGA table favor mugs(2) - blue; 1981 HOACGA table favor mug - vaseline; Inverted Strawberry tumbler - purple; 1984 LLCGC Flying Bird bell - plum opal - All Sold Choice
- 30 367. Grape & Cable butterdish - blue; Inverted Thistle butterdishes(2) - ice blue; Rose in the Snow goblet - blue; Thistle goblet - purple; Buffalo & Deer goblet - purple; Indiana glass Grape goblets(2) - blue - All Sold Choice
- 10x3 368. Imperial Octagon vase - white; Peacock and Dahlia spittoon - burmese; Candleholders or bases(2) - purple; 1982 ACGA 3" plate - blue; 1970 ICGA bowl - amethyst; Octagon compote - blue - marked IG; Large Butterfly Ornaments(2) - marigold; St. Clair 1976 Liberty bells(2) - green; St Clair Bird on Nest - blue opaque; 2001 Gibson apple paperweight - purple - All Sold Choice
- 40x2 369. All Toothpicks: Octagon - marigold; Fruit & Flower - blue; Diamonds(2) - blue; Imperial hat - blue; St Clair Indian - vaseline; St Clair Indian - blue; St Clair Indian - marigold; St Clair Indian - white; 1970 SCGC S-Repeat - blue; Holly Amber(3) - amber - All Sold Choice
370. ICGA Disk Paperweights - all colors - Sold Choice
371. 1970 Christmas Little Brown Church plate - purple; 1970 Craftsman plate - purple; Imperial Twelve days of Christmas plate - blue; Persain Medallion plate - purple; 1969 US Capital plate - red - All Sold Choice
372. Glass Ornaments - 2 blue - 2 red; Gibson round paperweights(2) blue
373. Four Carnival Glass posters - Sold Choice
374. Many Carnival Glass books - Sold Choice
375. Many plate holders



Seeck Auctions
P.O. Box 377
Mason City, Iowa 50402