



Lot #49A



Lot #50



Lot #55



Lot #360



Lot #181



Lots #48, 49

BURNS

AUCTION SERVICE

Great Lakes Carnival Glass Club's "Glass Bash" Auction

10:00 am, Saturday, Nov. 1, 2003

Preview: 8:00 am

at the

Best Western - Midway

7711 W. Saginaw Hwy.

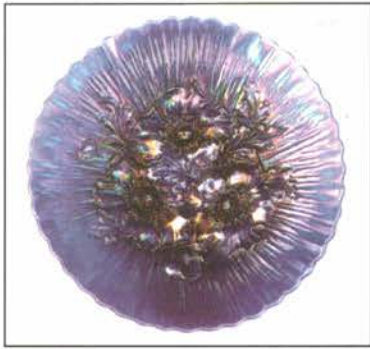
Lansing, MI 48917

(Exit 93B off I-96)

517-627-8471

or

877-772-6100



Lot #196



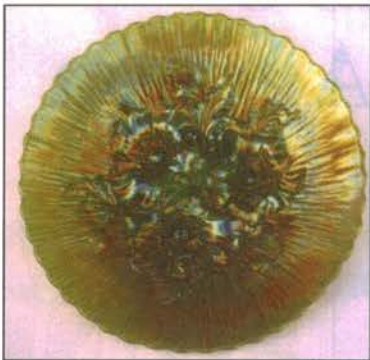
Lot #191



Lot #170



Lot #51



Lot #190



Lot #202



Lot #172



Lot #60



Lot #194



Lot #45



Lot #185



Lot #75



Lot #150



Lot #20



Lot #205



Lot #207

This year, being a late start, has become very interesting - especially this Great Lakes Carnival Glass Club Convention "Glass Bash" Auction. This year we have the collection of David Ackinson, plus some wonderful items from a private Tennessee collection as well as others, making for one of the finest selections we've sold this year. A big plus is that we have TWO newly discovered plate rarities: a Blue Ten Mums Chop Plate and a Green Dragon and Lotus Plate - the first examples of each ever to have been found!!! Believe me when I say that there's plenty more where they came from. You won't want to miss this one!

The Great Lakes Carnival Glass Club will host the event once again at the Best Western - Midway located in Lansing, MI. A special note: if you're going to attend MAKE YOUR RESERVATIONS NOW - there's a Michigan State home game against Michigan and rooms will be going VERY FAST!

So get in touch with the motel and join us for a few days of the Glass World. For info on the motel or to make reservations call them direct at 517-627-8471 or 877-772-6100. For more info on the Convention Call Mark Richter at 248-645-0811 or Maxine Burkardt at 517-627-7558.

Mail, Phone e-mail bids due by Thursday, Oct. 30, 2003.

Burns Auction Service

Tom Burns
P.O. Box 608
Bath, New York 14810
(607) 776-7942 Cell: 731-9302

Bill Richards
44 Water Street, Poland OH 44514
(330) 757-2001
FAX (330) 757-4917

Bill Richards III
2253 Country Lane
Poland, OH 44514
(330) 755-2620

Mail Bids honored under the following conditions:

1. No deposit required. Bidders will take full responsibility to honor any and all bids we execute for them. Payment in full plus postage and handling required after notification and before we ship any item to them.
2. Items are bid on in perfect condition with average or above average iridescence OR as listed in the brochures. Bids will not be carried out when damage on an item has been found during the auction. **PEOPLE PRESENT AT THE AUCTION ARE RESPONSIBLE FOR FINDING ANY PINHEADS, WEAR, SPOTTINESS, MANUFACTURER'S DEFECTS OR ANY OTHER MINOR FLAWS, ETC.**
3. Successful bidders will be notified by collect call from the auctioneer **SO BE SURE TO INCLUDE PHONE NUMBER.**
4. Phone inquiries about the glass or any other questions are welcome.
5. If you have some other person at the auction bidding for you, they must pay for the item before taking it.
6. Any terms or conditions given the day of the auction will supersede any previously published information.
7. Mail, e-mail, fax and phone bids are due by Thursday, October 30, 2003

Visit our website at: <http://www.woodsland.com/burnsauction/>

Books -

- | | | | |
|-------------|--|--------------|--|
| 65
35 1. | 1977 ACGA - Cleveland, OH Souvenir Spittoon - Green | 10 16H. | Fenton Holly 6 Ruffled Stemmed Compote - Blue (silvery irid.) |
| 45 2. | 1986 ACGA Morning Glory Pitcher Souvenir - Mari. | 35 16I. | Fenton Holly 6 Ruffled Stemmed Compote - Pastel Mari. (nice light irid.) |
| 35 3. | 1987 ACGA Morning Glory Pitcher Souvenir - Green | 10x2 16J. | (2) Fenton Holly 6 Ruffled Stemmed Compotes - Mari. (nice irid.; selling choice) |
| 50 4. | 1988 ACGA Morning Glory Pitcher Souvenir - Dk. Pur. | 225 17. | FENTON ACORN DEEP ROUND BOWL - RED (A REALLY RED EXAMPLE WITH A NICE SATINY FINISH; REALLY NICE) |
| 100 5. | 1989 ACGA Morning Glory Pitcher Souvenir - Dk. Red (really dark color) | 195 18. | FENTON ORANGE TREE HANDLED SHAVING MUG - RED (RARE AND UNUSUAL ITEM; NOT IRIDIZED ON THE INSIDE - VERY DIFFERENT) |
| 35 6. | 1980 ACGA Camp Hill, PA Beaded Shell Mug Souvenir - Ice Green | 255 19. | FENTON BLACKBERRY SPRAY 4 SIDED SQUARE HAT - RED (VERY SCARCE; REALLY RED WITH A SATINY FINISH) |
| 175 7. | (2) GOLDEN WEDDING PINT BOTTLES IN ORIGINAL BOXES WITH LABEL, ETC. - MARI. (SELLING CHOICE; VERY RARE ITEMS) | 500 20. | FENTON LOTUS AND POINSETTIA FTD. 6 RUFFLED SAUCE - RED (ACTUALLY QUITE AN ATTRACTIVE EXAMPLE WITH EXCELLENT COLOR AND NICE IRID.) |
| 155 8. | Golden Wedding Quart Bottle with label - Mari. | 225 21. | FENTON WINE AND ROSES 7 PC. CIDER SET - MARI. (VERY RARE SET TO FIND COMPLETE; THE PITCHER IS A BEAUTY!) |
| 10 9. | Older Golden Wedding Pint Bottle with label - Mari. | 15 22. | Fenton Wine and Roses Stemmed Wine Glass - Powder Blue / Mari. (very scarce base color; not many around) |
| 40, 70 10. | (3) Golden Wedding 1/10 Pint "Nip" Bottles with labels - Mari. (scarce items; selling choice) | 25 23. | Fenton Wine and Roses Stemmed Wine Glass - Blue (scarce with nice detail and irid.; a toughie) |
| 30 11. | Golden Wedding Pint Bottle with label and Shot Glass - Mari. | 35 24. | Fenton Sailboat Stemmed Wine Glass - Blue (scarce in this color; nice color and detail) |
| 27 12. | Golden Wedding 1/2 Pint Bottle - Mari. | 15, 15x2 25. | (3) Fenton Sailboat Stemmed Wine Glasses - Mari. (various hues; selling choice) |
| 35 13. | M'burg Ohio Star Short Stemmed Round Compote - Crystal (very scarce and desirable; nice) | 75 26. | FENTON ORANGE TREE STEMMED GOBLET - MARI. / VASELINE (VERY DESIRABLE BASE COLOR; BRIGHT WITH A MARI. OVERLAY) |
| 35x2 14. | (2) Fenton Orange Tree Stemmed Wines with Berry Interior - (1) Custard (1) Moonstone (selling choice) | 20 27. | Fenton Orange Tree Stemmed Goblet - Powder Blue / Mari. (another scarce base color for this pattern) |
| 1900 15. | FENTON HOLLY 8 RUFFLED BOWL - COBALT BLUE OPAL. (EXTREMELY RARE AND VERY DESIRABLE FENTON ITEM WITH OPAL ON EDGE AND ELEC. IRID.) | 25 28. | Fenton Orange Tree Stemmed Goblet - Blue (scarce with really nice color and detail) |
| 175 16. | FENTON HOLLY 8 RUFFLED BOWL - ODD GREEN SLAG / MARI. (RARE ITEM; AN UNUSUAL SLAG EFFECT; BRIGHT GREEN WITH A MARI. OVERLAY) | 37 29. | Fenton Orange Tree Stemmed Goblet - "Souvenir of Plymouth, WIS." - Dk. Mari. (super example... where is Plymouth???) |
| 85 16A. | Fenton Holly 6 Ruffled Stemmed Compote - Black Amy. (very scarce color with a nice satiny irid.) | 10, 25 30. | (2) Fenton Orange Tree Stemmed Goblets - 1 - Dk. Mari. 1 - Mari. (selling choice) |
| 95 16B. | Fenton Holly 6 Ruffled Stemmed Compote - Mari. / Vaseline (rare and very desirable base color; really yellow looking!) | 2. 50 x3 31. | (3) Fenton (?) Interior Smooth Rays Stemmed Wine Glasses - Mari. (scarce; selling choice) |
| 35 16C. | Fenton Holly 6 Ruffled Stemmed Compote - Lt. Amy. (odd base color - difficult) | 15 32. | (2) Fenton (?) Interior Smooth Rays Taller Stemmed Wine Glasses - Mari. (scarce; selling choice) |
| 35 16D. | Fenton Holly 6 Ruffled Stemmed Compote - Lavender (another odd base color with nice irid.) | 115 33. | Fenton (?) Interior Smooth Rays Stemmed Goblet - Mari. (scarce item) |
| 35 16E. | Fenton Holly 6 Ruffled Stemmed Compote - Amy. (rare and popular base color with nice satiny irid.) | 325 | <i>holly hat red</i> |
| 35x2 16F. | (2) Fenton Holly 6 Ruffled Stemmed Compotes - Cobalt Blue (scarce and attractive with nice irid.; selling choice) | | |
| 35 16G. | Fenton Holly 6 Ruffled Stemmed Compote - Blue (scarce with nice color) | | |

- 135 34. 7 1/2" FENTON PERSIAN MEDALLION FLAT PLATE - BLUE (SCARCE COLOR AND SIZE FOR THIS PATTERN; TOUGH!) 300 61.
- 135 35. 9 1/2" FENTON LEAF CHAIN FLAT PLATE WITH BERRY EXT. - WHITE (SCARCE WITH NICE IRID. AND DETAIL) 300 62.
- 75 36. 8 3/4 - 9" Fenton G & C spatula ftd. Plate - Green (scarce item with nice color and satiny irid.) 200 63.
- 195 37. FENTON KITTENS CUP AND SAUCER - DK. MARI. (VERY SCARCE AND DESIRABLE SET; NICE) 70 64.
- 25 38. 5" Dugan Persian Garden Deep Round ind. Berry Bowl - P. Opal. (quite a scarce item to find) 1650 65.
- 35 39. Dugan Golden Harvest Wine Decanter and Stopper - Mari.
- 1700 40. N EMBROIDERED MUMS FLAT PLATE WITH RIBBED INT. - ICE GREEN (VERY RARE ITEM WITH EXCELLENT IRID.; A BIT CROOKED) 925 66.
- 215 41. N Embroidered Mums 8 Ruffled Bowl with Ribbed Ext. - Ice. Blue (rare item with nice color and average irid.; has a manuf. flake on edge) 105 67.
- 250 42. N EMBROIDERED MUMS 8 RUFFLED BOWL WITH RIBBED EXT. - PUR. (VERY SCARCE & DESIRABLE; NICE COLOR) 85 68.
- 500 43. N THREE FRUITS MEDALLION STIPPLED FTD. 8 RUFFLED BOWL WITH MEANDER EXT. - AQUA OPAL. (RARE AND DESIRABLE WITH NICE PASTEL FINISH) 75 69.
- 105 44. N Three Fruits deep Flared Plate with Basketweave Ext. - Dk. Pur. (scarce with really nice color and irid.) 1150 70.
- 600 45. N PEACOCKS 8 RUFFLED BOWL WITH RIBBED EXT. - SMOKE (EXTREMELY RARE ITEM; HAVEN'T SOLD ONE OF THESE IN YEARS! SMOKEY GRAY WITH YELLOW HIGHLIGHTS) 450 71.
- 250 46. N Peacocks 8 Ruffled Bowl with Ribbed Ex. - Aqua Opal. (rare & desirable; has a butterscotch overlay and chip on one tooth) 130 73.
- 325 47. N PEACOCKS PLATE WITH RIBBED EXT. - ICE GREEN (VERY SCARCE & VERY DESIRABLE; REALLY NICE IRID.) 95 74.
- 800 48. N G & C HANDLED WATER PITCHER - SMOKE (EXTREMELY RARE BASE COLOR; PERFECT WITH GREAT COLOR AND IRID.) 2500 75.
- 75 49. N & C TUMBLER - SMOKE (MATCHES ABOVE ITEM AND HAS TO BE QUITE RARE) 95 76.
- 13,000 49A. 10 3/4" FENTON TEN MUMS FLARED CHOP PLATE - COBALT BLUE (1ST REPORTED AND A REAL BEAUTY! A SUPER, SUPER EXAMPLE WITH EXCELLENT BRIGHT MULTI-COLORED IRID. - WOW!!!) 95 77.
- 450 49B. 9 1/2" FENTON PERSIAN MEDALLION FLAT PLATE - BLUE / ELEC. BLUE (ACTUALLY A SUPER EXAMPLE WITH REALLY BRIGHT HIGHLIGHTS - A NICE ONE!) 180 78.
- 10,000 50. 9 1/2" FENTON DRAGON AND LOTUS FLAT PLATE - GREEN (WHAT CAN I SAY! 1ST REPORTED & A BEAUT!!! PINHEAD ON COLLAR BASE) 75 79.
- 2100 51. 9 1/4" FENTON DRAGON AND LOTUS FLAT PLATE - DK. MARI. (RARE AND A SUPER EXAMPLE; GREAT COLOR AND IRID.) 165 84.
- 165 52. 8 1/4" FENTON DRAGON AND LOTUS I.C. SHAPED BOWL - DK. GREEN (REALLY DARK & SUPER - VERY DIFFERENT) 20 84A.
- 110 53. 8" FENTON DRAGON AND LOTUS I.C. SHAPED BOWL - DK. AMBER (RARE BASE COLOR; NICE SHAPE AND IRID.) 650 85.
- 100 54. 9" Fenton Dragon and Lotus 8 Ruffled Bowl - Amber (another rare color; has nice irid.) 115 86.
- 13,000 55. 9 1/2" FENTON ORANGE TREE FLAT PLATE WITH BERRY EXT. - EMERALD GREEN (HAS TO BE ONE OF THE VERY BEST - BRIGHT BLUE HIGHLIGHTS) 150 87.
- 35 56. 8 1/2" Fenton Orange Tree with Trunk 8 Ruffled Bowl with Berry Ext. - Dk. Mari. (super color and irid. - really nice) 35 88.
- 195 57. Fenton Orange Tree Handled Standard size Mug - Red / Ambalina (rare and desirable; has a bruise on base) 10 89.
- 70 58. 5 1/2" Fenton Stippled Rays ind. Round Berry Bowl - Amber (rare base color) 530 90.
- 40 59. 8" Fenton Peacock and Grape I.C. Shaped Bowl - Mari. (nice color and irid.) 135 91.
- 1350 60. 9" FENTON CONCORD GRAPE FLARED PLATE - AMY. (VERY RARE AND VERY DESIRABLE; NICE COLOR AND IRID.) 175 92.
- 85 93.
- 55 94.
- 55 95.
- 300 96.
- 9 - 9 1/4" FENTON CONCORD GRAPE FLARED PLATE - MARI. (ANOTHER RARE ITEM WITH NICE COLOR AND IRID.; HAS A CHIP ON BASE MOLD LINE)
- 9 1/2" FENTON HOLLY FLARED PLATE - AMY. (RARE COLOR; HAS A NICE SATINY FINISH)
- 9 3/4" Fenton Holly Flared Plate - Blue (very scarce item; has average irid.)
- 9" Fenton Holly 8 Ruffled Bowl - Green (very scarce base color)
- 9" FENTON THISTLE FLAT PLATE - AMY. (VERY RARE AND VERY DESIRABLE; HAS A BRIGHT SATINY FINISH)
- 9 1/4" FENTON CAPTIVE ROSE FLARED PLATE - GREEN (RARE AND VERY DESIRABLE; GREAT COLOR AND IRID.)
- 8 3/4" Fenton Captive Rose 6 Ruffled Bowl - Green (very scarce; nice irid.)
- 8" Fenton Captive Rose Round Bowl with Tight C.R.E. - Blue (nice color and irid.)
- 7 3/4" Fenton Captive Rose Round Bowl with Tight C.R.E. - Amy. (another nice item)
- 9 3/16" x 1 7/8" TALL (FROM TABLE) FENTON PLAID FLARED PLATE - BLUE / ELEC. BLUE (ABSOLUTELY A PLATE!!! GREAT COLOR AND AN UNUSUAL IRID.)
- 9" FENTON PLAID 8 RUFFLED BOWL - GREEN (VERY SCARCE ITEM IN THIS COLOR; REALLY NICE)
- FENTON PERSIAN MEDALLION 2 HANDLED 4 SIDED BON BON - AQUA / MARI. (RARE BASE COLOR; TOUGH TO FIND)
- 7" Fenton Peacock and Dahlia 6 Ruffled Bowl - Aqua / Mari. (scarce item; nice base color and overlay)
- 6" Fenton Two Flowers ftd. 6 Ruffled Sauce - Lime Green / Mari. (scarce item; nice base color; nice)
- 6 1/2" FENTON CHERRY CHAIN FLAT PLATE WITH O.T. EXT. - EMERALD GREEN (ABSOLUTELY SUPER EXAMPLE WITH A BLUE FINISH; A GREAT ITEM)
- 9 3/4" FENTON CHERRY CHAIN LG. 8 RUFFLED BOWL WITH O.T. EXT. - AMY. (VERY SCARCE BASE COLOR WITH NICE IRID.; NICE)
- 6 1/4" Fenton Sailboat Flared Plate - Mari. (scarce item with average irid.)
- 5 1/4" FENTON GARDEN MUMS ROUND FLARED BOWL - AMY. (QUITE A SCARCE ITEM; NICE COLOR)
- Fenton Pond Lily 2 Handled 4 sided Bon Bon - White (scarce with nice irid.)
- 9 1/4" FENTON PEACOCK AT THE URN FLAT PLATE - DK. MARI. (VERY SCARCE WITH GREAT IRID.; REALLY NICE)
- Fenton Bouquet 6 pc. Bulbous Water Set - Dk. Mari. (very scarce set; pitcher is really nice)
- 5 1/4" x 5 1/2" Fenton Little Flowers 4 sided Square Bowl - Mari. (scarce shape; really nice irid.)
- 5 1/2" Fenton Little Flowers Tri Cornered Sauce - Mari. (another scarce shape with nice irid.)
- Cambridge Inverted Strawberry Lg. Rose Bowl Shaped Master Berry Bowl - Amy. (rare with a slightly different shape; pinhead on edge)
- Cambridge Inverted Feather Stemmed 6 Ruffled Compote - Dk. Mari. (nice color; scarce and desirable)
- M'BURG HOBNAIL SWIRL SPITTOON - PUR. (RARE AND VERY DESIRABLE; REALLY NICE COLOR AND IRID.)
- 6 3/8" M'burg Strawberry Wreath Round Flared Bowl - Amy. (very scarce with a nice radium irid.)
- M'burg Diamond Handled Water Pitcher - Dk. Mari. (scarce with really nice irid.)
- M'burg Diamond Tumbler - Mari. (nice color)
- M'burg Diamond Tumbler - Amy. (really nice; has a chip)
- 9 3/4" M'BURG PEACOCK AT THE URN LG. ICE CREAM BOWL - AMY. (RARE AND VERY DESIRABLE; HAS A GREAT RADIUM FINISH)
- 8 3/4" M'burg Trout and Fly Bowl with 3 in 1 edge - Green (very scarce and desirable; has a smoothed base)
- CAMBRIDGE INVERTED FEATHER COVERED CRACKER JAR - GREEN (VERY SCARCE & DESIRABLE; NICE IRID.)
- 7 1/4" M'burg Strawberry Wreath Variant 6 Ruffled Bowl - Green (scarce with a nice radium finish)
- 7" M'burg Holly Sprig 6 Ruffled Crimped Edge Bowl - Mari. (scarce with a nice radium finish)
- 5 3/4" M'burg Blackberry Wreath Round Bowl with T.C.E. - Mari. (scarce; radium)

leaf chain plate - mari

- 155 96. N GREEK KEY TUMBLER - GREEN (VERY SCARCE WITH NICE COLOR AND IRID.)
- 155 97. N Greek Key Tumbler - Pur. (very scarce with nice color & irid.)
- 65 98. N Singing Bird Tumbler - Emerald Green (super color and irid.) *
- 55 99. N Singing Bird Tumbler - Green (nice color)
- 450 100. 8 1/2" N PEACOCKS BOWL WITH P.C.E. AND RIBBED EXT. - PUR. (A SUPER, SUPER EXAMPLE WITH GREAT IRID.)
- 600 101. 9 1/8" N PEACOCKS FLAT PLATE WITH RIBBED EXT. - PUR. (ANOTHER REALLY NICE ITEM WITH GREAT IRID.)
- 325 102. 9" N PEACOCKS FLARED PLATE WITH RIBBED EXT. - WHITE (RARE AND DESIRABLE WITH REALLY NICE IRID.)
- 275 103. 9 1/8" N PEACOCKS FLARED PLATE WITH RIBBED EXT. - MARI. (VERY SCARCE; NICE COLOR AND IRID.)
- 50 104. N Singing Birds Handled Mug - Pur. (nice color and irid.)
- 500 105. N (OR DUGAN) G & C STIPPLED AND BANDED LG. SIZE FTD. RUFFLED FRUIT BOWL - ELEC. BLUE (A SUPER EXAMPLE OF THIS DESIRABLE LARGE ITEM) *
- 275 106. N G & C 5 PC. WATER SET - PUR. (VERY SCARCE AND VERY DESIRABLE WITH ABSOLUTELY SUPER BLUE IRID.)
- 30 107. N G & C Tumbler - Pur. (nice color)
- 270 108. N G & C Stippled Handled Punch Cup - Mari. (has to be one of the dullest I've seen)
- 25 109. N G & C 6 Ruffled Hat (from Tumbler) - Mari. (nice satiny finish)
- 550 110. N G & C COVERED TOBACCO JAR - DK. MARI. (RARE AND VERY DESIRABLE; PERFECT WITH SUPER IRID.)
- 225 111. N G & C COVERED COOKIE JAR - DK. MARI. (ANOTHER VERY DESIRABLE ITEM WITH SUPER IRID.)
- 305 112. N G & C COVERED COOKIE JAR - PUR. (VERY SCARCE WITH A BRIGHT SATINY FINISH; NICE)
- 165 113. N G & C Covered Sweetmeat Compote - Pur. (scarce; desirable with nice multi-colored irid.)
- 85 114. 8 3/4" N G & C Flared Plate with Basketweave Ext. - Mari. (scarce with nice irid.)
- 175 115. N G & C 7 PC. WATER SET - DK. MARI. (A GREAT EXAMPLE WITH DARK COLOR AND GREAT IRID.)
- 75 116. 8 5/8" N G & C ftd. Deep Flared Plate with Meander Ext. - Green (nice color and irid.; getting scarce)
- 175 117. N G & C LG. DRESSER TRAY - PUR. (SCARCE AND DESIRABLE WITH REALLY NICE IRID.)
- 80 118. N G & C Stippled and Banded Lg. Oval Dresser Tray - Mari. (very scarce variation; average color and irid.)
- 110 119. N G & C ftd. Hatpin Holder - Mari. (scarce and desirable; nice color and irid.)
- 220 120. N G & C FTD. HATPIN HOLDER - PUR. (VERY SCARCE WITH NICE COLOR AND IRID.)
- 45 121. N G & C Tumbler - Green (scarce color)
- 185 122. N Grape Arbor 5 pc. Tankard Water Set - Mari. (very scarce and desirable with nice color)
- 60 123. N Grape Arbor Tumbler - Pur. (nice color and irid.)
- 75 124. 7" N Tree Trunk Squatty Standard size Vase - Pur. (scarce size with nice irid.)
- 700 125. 12" TALL N THIN RIB STANDARD SWUNG VASE - VASE-LINE (RARE AND VERY DESIRABLE WITH BRIGHT YELLOW BASE COLOR)
- 375 126. N CORN VASE WITH STALK BASE - ICE GREEN (VERY SCARCE; NICE IRID.)
- 300 127. N DAISY AND DRAPE FTD. FLARED VASE - AQUA OPAL. (RARE AND DESIRABLE; NICE COLOR AND IRID.)
- 300 128. N DAISY AND DRAPE FTD. TURNED IN VASE - MARI. (VERY SCARCE; NICE COLOR AND IRID.) - 400
- 180 129. N DAISY AND DRAPE FTD. TURNED IN VASE - WHITE (SCARCE WITH REALLY NICE IRID.)
- 475 130. N HEARTS AND FLOWERS STEMMED 6 RUFFLED COMPOTE - AQUA OPAL. (RARE AND DESIRABLE; NICE IRID. AND OPAL.)
- 150 131. Pair 7" Tall N'wood 6 Paneled Stretch Candlesticks - Blue Opaque (getting to be a rare pair to find)
- 25 132. 10" Tall N Thin Rib Standard Swung Vase - Green / Mari.
- 45 133. N Grape and Gothic Arches Tumbler - Dk. Mari. (nice color)
- 10 134. N Raspberry Tumbler - Mari.
- 185 135. N DANDELION TUMBLER - SMOKEY AMY. WITH SWIRL EFFECT (ONE OF THE BETTER EXAMPLES OF THIS ITEM I'VE SEEN)
- 35 136. N Acorn Burr Tumbler - Pur. (nice color and irid.)
- 30 137. N Oriental Poppy Tumbler - Mari. (nice irid.)
- 90 138. 8 3/4" N Strawberry 8 Ruffled Bowl with Basketweave ext. - Sorta Emerald Green (nice example with really nice bright irid.)
- 250 139. 7 1/2" N Wild Strawberry Hand Grip Plate with Basketweave Ext. - Dk. Mari. (very scarce; nice color and irid.)
- 250 140. N BEADED CABLE FTD. RUFFLED ROSE BOWL - WHITE (RARE AND DESIRABLE; PERFECT WITH NICE IRID.)
- 200 141. N BEADED CABLE FTD. RUFFLED ROSE BOWL - AQUA OPAL. (RARE AND DESIRABLE; NICE COLOR AND IRID.)
- 90 142. N Beaded Cable ftd. Ruffled Rose Bowl - Pur. (nice color & irid.)
- 95 143. N Beaded Cable ftd. Ruffled Rose Bowl - Dk. Mari. (really nice color and irid.)
- 105 144. N Beaded Cable ftd. Ruffled Rose Bowl with Rayed Int. - Green (scarce)
- 75 145. N BEADED CABLE FTD. RUFFLED ROSE BOWL WITH RAYED INT. - ODD AMY. (ODD BASE COLOR; SORTA DIFFERENT)
- 105 146. N Fine Cut and Roses ftd. Ruffled Rose Bowl with Fancy Int. - Ice Blue (very scarce with nice color and irid.)
- 45 147. N Fine Cut and Roses ftd. Ruffled Rose Bowl - Pur. (scarce with nice color)
- 75 148. N Fine Cut and Roses ftd. Ruffled Rose Bowl - Dk. Mari. (really nice color and irid.)
- 115 149. N Drapery Tri-Cornered Candy Dish - Ice Blue (scarce; nice irid.)
- 325 150. N ROUND HANDED BUSHEL BASKET - VIOLET BLUE (REALLY ODD AND RARE BASE COLOR; IT'S A NICE PASTEL LOOKING ITEM) - 200-300
- 125 151. N Round Handled Bushel Basket - Blue (scarce with nice color and irid.)
- 175 152. N ROUND HANDED BUSHEL BASKET - AQUA WITH OPAL. TIPS (ALMOST A LOT TOUGHER TO FIND BUT STILL HAS A TOUCH OF OPAL.)
- 155 153. N ROUND HANDED BUSHEL BASKET - ICE GREEN (VERY SCARCE WITH NICE COLOR AND IRID.)
- 130 154. N Round Handled Bushel Basket - White (scarce with really nice irid.)
- 400 155. N GOOD LUCK 8 RUFFLED BOWL WITH RIBBED EXT. - ELEC. BLUE (RARE AND VERY DESIRABLE WITH BRIGHT BLUE IRID.)
156. N GOOD LUCK 8 RUFFLED BOWL WITH RIBBED EXT. - PUR. (VERY SCARCE WITH NICE COLOR AND IRID.)
157. N Good Luck 8 Ruffled Bowl with Ribbed Ext. - Dk. Mari. (scarce with nice dark color and irid.)
158. 8" N Wishbone deep 8 Ruffled ftd. Bowl with Ruffles and Rings Ext. - green (scarce color and nice irid.)
159. N Three Fruits domed 8 Ruffled Bowl with Basketweave Ext. - Mari. (satiny finish)
- 525 160. N THREE FRUITS MEDALLION STIPPLED FTD. 8 RUFFLED BOWL WITH MEANDER EXT. - ICE GREEN (RARE COLOR AND IRID.; A TOUGH ITEM TO FIND)
161. N Leaf and Beads ftd. Rose Bowl with Floral Int. - Green (very scarce variation; nice satiny finish)
162. N Leaf and Beads ftd. Rose Bowl with Floral Int. - Pur. (another nice example of this pattern)
163. N Leaf and Beads ftd. Rose Bowl - Mari. (nice color and irid.)
- 400 164. 9 1/2" N ROSE SHOW FLARED PLATE - WHITE (VERY SCARCE; HAS REALLY NICE IRID.)
- 1100 165. 9 1/2" N ROSE SHOW FLAT PLATE - BLUE / ELEC. BLUE (RARE AND VERY DESIRABLE; HAS BRIGHT BLUE HIGHLIGHTS)
- 2500 166. 9" N ROSE SHOW FLARED PLATE - ICE GREEN (RARE AND VERY DESIRABLE; GREAT COLOR WITH GOLD HIGHLIGHTS)
167. N Peacock at the Urn Lg. Ice Cream Bowl - Custard / Nutmeg (very scarce item with excellent nutmeg)
168. (2) N PEACOCK AT THE URN IND. ICE CREAM BOWLS - PUR. (BOTH HAVE ELEC. BLUE HIGHLIGHTS; SELLING CHOICE)
- 315 169. N DRAPERY ROSE BOWL - AQUA OPAL. (RARE AND DESIRABLE WITH NICE OPAL. AND IRID.)
- 850 170. N PEACOCKS FLAT PLATE WITH RIBBED EXT. - ELEC. BLUE (SUPER EXAMPLE WITH BRIGHT BLUE HIGHLIGHTS)
- 1200 171. N PEACOCKS STIPPLED PLATE WITH RIBBED EXT. - ELEC. BLUE (RARE AND DESIRABLE WITH GREAT COLOR AND IRID.)
- 1350 172. N PEACOCKS STIPPLED PLATE WITH RIBBED EXT. - PUR. (VERY SCARCE WITH NICE COLOR AND IRID.)
173. N Peacocks Plate with Ribbed Ext. - Mari. (very scarce; nice color and irid.)
- 350 174. N PEACOCKS PLATE WITH RIBBED EXT. - LIME ICE GREEN (RARE BASE COLOR; NICE IRID.)
- 800 175. 8 3/4" N PEACOCKS LOW 8 RUFFLED BOWL WITH RIBBED EXT. - AQUA OPAL. (RARE AND A PASTEL BEAUTY WITH NICE IRID.)

- 759 176. 8 1/2" N PEACOCKS 8 RUFFLED BOWL WITH RIBBED EXT. - POWDER BLUE OPAL. (EXTREMELY RARE ITEM BUT HAS A 3" HAIRLINE)
- 177. 10" Tall N 4 Pillar Ribbed Vase - Blue / Elec. Blue (rare color for this item; nice color - odd edge)
- 178. N ROUND HANDLED BUSHEL BASKET - AQUA OPAL. (RARE AND DESIRABLE; NICE COLOR AND OPAL.)
- 179. N Round Handled Bushel Basket - Blue (scarce with nice irid.)
- 180. N STRAWBERRY STIPPLED 8 RUFFLED BOWL WITH RIBBED EXT. - AQUA OPAL. (THIS ITEM IS "AS IS" - GLUED TOGETHER - BUT IT'S A BEAUTY... GO FIND ANOTHER!)
- 2400 181. N GOOD LUCK 8 RUFFLED BOWL WITH RIBBED EXT. - AQUA OPAL. (EXTREMELY RARE AND VERY DESIRABLE - SUPER PASTEL EXAMPLE)
- 182. N Floral Enameled Handled Tankard Water Pitcher - Enam. Cranberry (not carnival but very attractive - nice)
- 183. N Floral Enameled 5 pc. Tankard Water Set - Enam. Amy. (very scarce and has great decoration; a nice set)
- 184. N Strawberry Stippled Bowl with P.C.E. with Ribbed Ext. - Mari. (very scarce item with a nice satiny irid.)
- 185. N GOOD LUCK FLAT PLATE WITH BASKETWEAVE EXT. - HOREHOUND (RARE AND VERY ATTRACTIVE; A REALLY GOOD LOOKING ITEM)
- 186. N GOOD LUCK STIPPLED PLATE WITH RIBBED EXT. WITH NARROW BASE - PUR. (VERY RARE IN THIS COLOR; HAS LAID BACK MULTI-COLORED IRID.)
- 400 187. N GOOD LUCK STIPPLED PLATE WITH RIBBED EXT. WITH NARROW BASE - DK. MARI. (RARE AND VERY ATTRACTIVE; BRIGHT COLOR AND IRID.)
- 188. N Good Luck 8 Ruffled Bowl with Basketweave Ext. - Green (very scarce; has a nice satiny irid.)
- 600 189. N ROSE SHOW VARIANT FLARED PLATE WITH RIBBED EXT. AND NARROW BASE - BLUE (VERY RARE; NICE BASE COLOR WITH A MULTI-COLORED LAID BACK IRID.)
- 4500 190. N POPPY SHOW PLATE - ELEC. GREEN (A SUPER EXAMPLE; GREAT BASE COLOR WITH SUPER BRIGHT IRID.)
- 191. N POPPY SHOW PLATE - PUR. (RARE COLOR IN THIS PATTERN & HAS A NICE LAID BACK MULTI-COLORED IRID.)
- 192. N POPPY SHOW PLATE - ICE BLUE (RARE AND DESIRABLE WITH NICE COLOR AND AVERAGE IRID.)
- 193. N POPPY SHOW PLATE - ICE GREEN (ANOTHER RARE & DESIRABLE ITEM WITH NICE COLOR & AVERAGE IRID.)
- 194. N POPPY SHOW PLATE - MARI. (RARE AND DESIRABLE WITH NICE EVEN COLOR AND IRID.)
- 195. N POPPY SHOW PLATE - DK. MARI. (RARE AND A REALLY NICE EXAMPLE; GREAT COLOR AND IRID.)
- 196. N POPPY SHOW PLATE - BLUE (RARE AND VERY DESIRABLE - REALLY NICE COLOR AND MULTI-COLORED IRID.)
- 197. N POPPY SHOW PLATE - WHITE (RARE AND A VERY ATTRACTIVE EXAMPLE)
- 198. N Memphis 8 pc. Fruit Bowl Set - Ice Blue (bowl is cracked but what a good looking set)
- 199. 8 1/2" N 4 Pillar and Rib Vase - Pur. (nice but has a big chip on base)
- 200. N EMBROIDERED MUMS BOWL WITH P.C.E. AND RIBBED EXT. - AQUA / SAPPHIRE (EXTREMELY RARE ITEM; GREAT BASE COLOR WITH EXCELLENT IRID.)
- 201. N HEARTS AND FLOWERS BOWL WITH P.C.E. AND RIBBED EXT. - GREEN (WHAT A GREAT ITEM; PERFECT WITH AN UNUSUAL GOLD IRID. - NICE)
- 202. N HEARTS AND FLOWERS PLATE WITH RIBBED EXT. - PUR. (A SUPER EXAMPLE - HAS BRIGHT BLUES AND GOLDS)
- 203. 7 1/2" N FRUITS AND FLOWERS STIPPLED PLATE WITH BASKETWEAVE - DK. MARI. (VERY SCARCE AND VERY DESIRABLE WITH SUPER IRID.)
- 204. N THREE FRUITS STIPPLED PLATE WITH RIBBED EXT. - PUR. (VERY SCARCE WITH NICE COLOR AND IRID.)
- 205. N THREE FRUITS STIPPLED PLATE WITH RIBBED EXT. - AQUA OPAL. (RARE AND VERY DESIRABLE; HAS SOME WEAR ON FRUIT)
- 206. N THREE FRUITS STIPPLED PLATE WITH RIBBED EXT. - AMY. (RARE AND VERY DESIRABLE; HAS A NICE LIGHTER BASE COLOR)
- 207. N G & C BOWL WITH P.C.E. AND RIBBED EXT. - ICE BLUE (RARE AND VERY DESIRABLE; REALLY NICE IRID.)
- 208. N G & C VARIANT BOWL WITH P.C.E. AND RIBBED EXT. - BLUE / ELEC. BLUE (VERY SCARCE WITH NICE COLOR AND MULTI-COLORED IRID.)
- 209. N G & C STIPPLED PLATE WITH BASKETWEAVE EXT. - GREEN (RARE VARIATION WITH REALLY NICE BRIGHT IRID.)
- 210. N G & C VARIANT PLATE WITH RIBBED EXT. - SAPPHIRE (RARE AND VERY DESIRABLE ITEM; GREAT BASE COLOR AND LAID BACK MULTI-COLORED IRID.)
- 211. N G & C STIPPLED DEEP FLARED PLATE WITH RIBBED EXT. - PUR. (RARE VARIATION WITH NICE COLOR & IRID.)
- 212. N'wood Floral Enameled Tankard Water Pitcher - Crystal / Decor. (attractive item)
- 213. Jenkins Mayflower Handled water Pitcher - Mari. (scarce item)
- 214. Jenkins Mayflower Tumbler - Mari.
- 215. EUROPEAN 8 PC. ENAMELED WINE DECANTER SET - CRYSTAL FROSTED / MARI. (REALLY UNUSUAL AND A VERY ATTRACTIVE SET WITH NICE DECORATION)
- 216. Westmoreland Estate Breakfast Sugar and Creamer - P. Opal. (cute pair with opal. on edge)
- 217. Westmoreland Lustre and Clear Breakfast Sugar and Creamer - Gold Flash (unusual set)
- 218. Devilbiss Stemmed Perfume Bottle - Mari. (nice irid.; scarce)
- 219. Devilbiss Perfume Atomizer - Mari. (bulb is broken; nice irid.)
- 220. 10 3/4" DUGAN WISHBONE AND SPADES CHOP PLATE - PUR. (RARE AND DESIRABLE ITEM; HAS DIRT FROM THE FACTORY ON THE EXTERIOR)
- 221. 10 1/2" DUGAN FOUR FLOWERS CHOP PLATE - P. OPAL. (RARER THAN YOU THINK; OPAL. ON EDGE WITH A NICE SATINY FINISH)
- 222. 6 3/4" DUGAN CHERRIES PLATE WITH T.C.E. AND JEWELLED HEART EXT. - PUR. (RARE, DESIRABLE WITH BRIGHT IRID.)
- 223. 9 3/4" DUGAN CHERRIES 6 RUFFLED BOWL WITH JEWELLED HEART EXT. - PUR. (ATTRACTIVE IRID. ON A DESIRABLE ITEM)
- 224. 11 1/4" Dugan Persian Garden Lg. I.C. Bowl - White (scarce with bright irid. and it's frosty)
- 225. DUGAN JEWELLED HEART HANDLED WATER PITCHER - DK. MARI. (RARE ITEM TO FIND; NICE COLOR AND SATINY IRID.)
- 226. Dugan Jeweled Heart Tumbler - Mari. (scarce; nice color)
- 227. 4 1/2" Tall x 5 1/4" Flare Dugan Lined Lattice Squatty Flared Vase - P. Opal. (rare shape with nice opal.; a bit worn inside)
- 228. Dugan Paneled Cherries ftd. Round Bowl with T.C.E. - P. Opal. (nice opal. and overlay)
- 229. (6) Dugan Maple Leaf Tumblers - Pur. (pretty well matched set; satiny)
- 230. DUGAN FISHERMANS MUG - DK. MARI. (RARE TO FIND AND AN EXCELLENT EXAMPLE; NICE DETAIL AND IRID.)
- 231. Dugan Fishermans Mug - Pur. (nice detail and color)
- 232. Dugan Beaded Shell Handled Mug - Pur. (scarce with nice irid.)
- 233. Dugan Vintage Banded Handled Mug - Mari.
- 234. Dugan Maple Leaf Tumbler - Mari.
- 235. DUGAN GOD AND HOME TUMBLER - BLUE (RARE AND DESIRABLE; HAS A NICE SATINY IRID.)
- 236. Dugan Peacock at the Fountain Tumbler - Blue (nice color & irid.)
- 237. Dugan Floral and Grape Tumbler - Amy. (nice irid.)
- 238. Dugan Harvest Flower Tumbler - Mari. (scarce item)
- 239. Dugan Beaded Shell Tumbler - Mari. (scarce item)
- 240. DUGAN DAISY AND LATTICE TUMBLER - LT. AMY. (VERY UNUSUAL ITEM WITH THIS BASE COLOR - REALLY DIFFERENT)
- 241. Dugan Grapevine Lattice Tumbler - Mari.
- 242. Dugan Waterlily and Cattail Tumbler - Dk. Mari. (nice color)
- 243. Dugan Vineyard Tumbler - Mari. (nice irid.)
- 244. Dugan Floral and Grape 7 pc. Bulbous Water Set - Mari.
- 245. 8 3/4" DUGAN ROUND UP FLAT PLATE - AMY. (VERY SCARCE WITH AN UNUSUAL BASE COLOR & SATINY IRID.)

246. 9 3/4" Tall Dugan Big Basketweave Swung Vase - Pur. (scarce base color with an average irid.)
247. Dugan Leaf Ray Handled Nappy - Amy. (satiny)
248. Dugan Holly Whirl Handled Ruffled Nappy - Pur. (scarce shape; satiny)
249. Dugan Golden Harvest 8 pc. Wine Set - Mari. (scarce complete set)
250. 8 1/2" Dugan Apple Blossom Twig low Ruffled Plate - P. Opal. (nice opal. and irid.)
251. Dugan Stippled Petals domed 2 sided Ruffled Bowl - P. Opal. (scarce shape and opal.)
252. Dugan Stippled Petals domed 2 sided Ruffled Bowl - P. Opal. (scarce shape and opal.)
253. Dugan Holly Whirl 10 Ruffled Bowl - P. Opal. (nice opal.)
254. Dugan Puzzle 2 Handled Round Bon Bon - Lt. P. Opal.
255. 6" Dugan Persian Garden Ice Cream Bowl - White (frosty with nice irid.)
- 255A. Dugan Constellation Stemmed 6 Ruffled Compote - White (scarce; nice irid.; bruise on one ruffle)
256. 7" Dugan Grapevine Lattice low 8 Ruffled Bowl - White (frosty with nice irid.)
257. Pair Dugan Paneled Swung Bud Vases - Mari. (selling as a pair)
258. 1909 Louisville Shriners Champagne Glass - Clear (nice irid.)
259. 1910 New Orleans Shriners Champagne Glass - Clear (nice irid.)
260. **9 1/4" EUROPEAN PODS AND POSIES FLARED PLATE WITH OVAL EXT. - PUR. (RARE AND DESIRABLE WITH A SATINY FINISH; HAS MANUF. GROUND BASE)**
261. (2) N'wood Enameled Ground Cherries Tumbler - Elec. Blue (both are excellent examples; selling choice)
262. "Be Wise" Owl Bank - Mari. (you guys may need one for the banquet)
263. **8 1/2" WESTMORELAND CAROLINA DOGWOOD 6 RUFFLED BOWL - BLUE OPAL. (RARE AND DESIRABLE WITH NICE BASE COLOR AND OPAL. ON EDGE)**
264. **8 1/4" WESTMORELAND SCALES 6 RUFFLED BOWL - BLUE OPAL. (SCARCE & DESIRABLE WITH NICE COLOR)**
265. **FENTON BLACKBERRY SPRAY 6 RUFFLED HAT - AQUA OPAL. (RARE AND VERY DESIRABLE; AN ATTRACTIVE EXAMPLE)**
266. Fenton 2 Row Open Edge 4 sided Square Hat - Mari.
267. Fenton 2 Row Open Edge 2 sided Hat - Mari.
268. 8" Tall Fenton Swung Bud Vase - Dk. Mari. (nice color)
269. Pair 9 - 9 1/2" Tall Fenton "Honeycomb" Swung Bud Vases - Vaseline Opal. (not carnival; have super color and opal.)
270. **FENTON PANELED DANDELION 7 PC. TANKARD WATER SET - BLUE (VERY SCARCE AND VERY DESIRABLE SET; NICE IRID. AND WELL MATCHED)**
271. **FENTON PANELED DANDELION 7 PC. TANKARD WATER SET - DK. MARI. (VERY SCARCE SET WITH REALLY NICE COLOR AND DETAIL)** ⁴⁵
272. Fenton Paneled Dandelion Tumbler - Amy. (satiny)
273. Fenton Enameled Cherries Tumbler - Blue (nice decor.)
274. Fenton Enameled "Crocus" (?) Tumbler - Mari. (nice decor.)
275. Fenton Butterfly and Fern Tumbler with Manuf. Ground Base - Green (nice satiny example)
276. Fenton Orange Tree Scroll Tumbler - Dk. Mari. (very scarce; nice irid.)
277. Fenton Apple Tree Tumbler - Mari.
278. Fenton Butterfly and Berry Tumbler - Dk. Mari. (nice color & irid.)
279. Fenton Lattice and Grape Tumbler - Blue (nice irid.) ³⁵
280. Fenton Orange Tree Handled Shaving Mug - Red (nice color and irid.; has some damage)
281. Fenton Orange Tree Standard Flared Mug - Elec. Blue (super irid.; has a small chip)
282. Fenton Orange Tree Covered Powder Jar - Blue (scarce with nice color and irid.)
283. Fenton Orange Tree Lg. ftd. Ruffled Fruit Bowl - Mari. (nice irid.)
284. Fenton Orange Tree Stemmed Goblet - Mari.
285. **FENTON ORANGE TREE HANDLED LOVING CUP - GREEN (RARE AND DESIRABLE; NICE BASE COLOR WITH A LIGHT OVERLAY; TILTS A LITTLE)**
286. **FENTON ORANGE TREE 8 PC. RUFFLED PUNCH SET - BLUE (A BEAUTY OF A SET AND WELL MATCHED; REALLY NICE)**
287. **FENTON PERSIAN MEDALLION LG. 6 RUFFLED CRIMPED EDGE COMPOTE - AMY. (RARE BASE COLOR FOR THIS ITEM; NICE SATINY FINISH)**
288. Fenton Stream of Hearts Stemmed 6 Ruffled Compote - Mari. (scarce and satiny)
289. Fenton Captive Rose Stemmed 6 Ruffled Crimped Edge Compote - Dk. Mari. (very scarce item with really nice irid.)
- 289A. Fenton Orange Tree Stemmed 6 Ruffled Compote - Mari. really nice example; great irid.)
- 289B. Fenton Miniature Blackberry Compote - Blue (scarce item; silvery irid.)
- 289C. Fenton Rose Spray Stemmed 6 Ruffled Compote - Mari. (scarce; nice satiny finish)
- 289D. N (?) Wide Panel Stemmed Ruffled Compote from Sherbet - Green (nice color and irid.)
290. **FENTON APPLE TREE 7 PC. BULBOUS WATER SET - WHITE (RARE SET TO FIND ANYMORE; GREAT TUMBLER - PITCHER A TAD LIGHTER)**
291. **9 1/2" FENTON HOLLY FLAT PLATE - WHITE (RARE AND DESIRABLE; NICE IRID.)**
292. **9 3/4" FENTON HOLLY FLAT PLATE - BLUE (VERY SCARCE WITH NICE COLOR AND IRID.)**
293. 9 1/2" Fenton Three Fruits 12 sided Plate - Mari. (scarce; nice satiny irid.)
294. 7" Fenton Stippled Rays Flat Plate - Mari. (satiny)
295. 6 3/4" Fenton Lions 6 Ruffled Bowl - Mari. (nice detail; satiny)
296. 8 1/2" Fenton Peacock at the Urn 8 Ruffled Bowl - Mari. (nice color and irid.)
297. 5 1/2" Fenton Smooth Rays Tri-Cornered Sauce - Mari. (odd shape)
298. Fenton Vintage Grape ftd. Fernery - Elec. Blue (super irid.; has bright irid.; nice)
299. Fenton Peacock Tail 2 Handled 4 sided Bon Bon - Blue (satiny)
300. **9 1/4" FENTON TEN MUMS RUFFLED BOWL WITH 3 IN 1 EDGE - GREEN (RARE AND HAS GREAT IRID. - REALLY NICE EXAMPLE)**
301. Fenton Enameled Cherries 7 pc. Bulbous Water Set - Blue (scarce set; nice decor.)
302. Fenton Lattice and Grape 7 pc. Tankard Water Set - Mari. (nice set; nice color)
303. Fenton G & C / Persian Med. Int. ftd. Ruffled Fruit Bowl - Mari. (nice sized item with nice irid.)
304. Fenton Little Fishes ftd. 6 Ruffled Sauce - Mari. (scarce; nice detail)
305. **FENTON KITTENS (2 SETS) RUFFLED TOOTHPICK HOLDER - LIGHT BLUE (RARE ITEM WITH A LIGHT TINT; TOUGH TO FIND)**
306. **FENTON KITTENS (2 SETS) RUFFLED TOOTHPICK HOLDER - MARI. (SCARCE WITH NICE COLOR AND IRID.)**
307. **FENTON KITTENS CUP AND SAUCER - MARI. (VERY SCARCE SET WITH NICE COLOR AND DETAIL)**
308. Fenton Kittens 6 Ruffled Bowl - Mari. (scarce; nice color)
309. Fenton Kittens 6 Ruffled Bowl - Mari. (scarce; nice color)
310. Fenton Kittens 2 sided Banana Dish - Mari. (scarce; nice color)
311. Fenton Kittens 4 sided Bowl - Mari. (scarce; average color)
312. Fenton Stretch Cornucopia Candlestick - White (very scarce item; frosty and nice)
313. Set of (12) Stretch Plates - 3 different sizes - White (selling in 3 lots by size)
314. 8 3/4" Fenton Vintage Grape Round Flared Master Berry Bowl - Green (nice color and irid.)
315. 7 3/4" Fenton Heart and Vine Bowl with T.C.E. - Green (nice color and shape)
316. 10 3/4" Tall Fenton April Showers Swung Vase - Amy. (nice color and irid.)
317. Fenton Stretch 2 pc. Tumble Up - Dk. Mari. (really nice irid.)
318. Fenton Scale Band Tumbler - Mari.
319. 10 1/8" Imperial Star Medallion Chop Plate - Clamb. (nice irid.)
320. **IMPERIAL HOMESTEAD NUART CHOP PLATE - SIGNED NUART - PUR. (RARE AND EXTREMELY DESIRABLE; SIGNED WITH SUPER IRID. AND PERFECT)**
321. **IMPERIAL HOMESTEAD NUART CHOP PLATE - NOT SIGNED - PUR. (RARE AND VERY DESIRABLE; REALLY NICE COLOR AND IRID.)**
322. **IMPERIAL HOMESTEAD NUART CHOP PLATE - NOT SIGNED - AMBER (VERY RARE AND DESIRABLE; GREAT COLOR WITH SUPER IRID.)**

323. IMPERIAL HOMESTEAD NUART CHOP PLATE - NOT SIGNED - WHITE (RARE; DESIRABLE WITH NICE IRID. AND FROSTY FINISH)
324. IMPERIAL HOMESTEAD NUART CHOP PLATE - NOT SIGNED - SMOKEY (LOOKS WHITE BUT HAS A GRAY TINT TO THE GLASS)
325. **IMPERIAL HATTIE CHOP PLATE - PUR. (ABSOLUTELY SUPER EXAMPLE WITH FANTASTIC IRID. - REALLY NICE)**
326. 9" IMPERIAL OPEN ROSE FLAT PLATE - AMBER (ACTUALLY QUITE A NICE EXAMPLE WITH BLUE HIGHLIGHTS)
327. IMPERIAL THUMBPRINT AND OVAL 6 RUFFLED VASE - MARI. (RARE & DESIRABLE WITH NICE COLOR AND IRID.)
- 327A. 3" TALL IMPERIAL EMBOSSED SCROLL MINIATURE 6 RUFFLED COMPOTE - PUR. (RARE AND DESIRABLE WITH GREAT COLOR AND IRID.)
328. Imperial Grape Tumbler - Amy. (nice irid.)
329. Imperial Grape Handled Water Pitcher - Pur. (scarce with nice color and average irid.; may have an open bubble)
330. IMPERIAL POPPY SHOW VASE - SMOKE (RARE AND VERY DESIRABLE; NICE IRID. AND GETS A BIT LIGHTER AT THE BASE; HAS A SMALL CHECK NEAR COLLAR BASE)
331. 12" TALL x 9 1/2" FLARE x 4 7/8" BASE IMPERIAL MORNING GLORY SQUATTY SWUNG FUNERAL VASE - PUR. (A SUPER EXAMPLE IN A NICE SIZE WITH GREAT IRID.)
332. IMPERIAL SWIRLED WIDE PANEL J.I.P. VASE - SMOKE (RARE COLOR; REALLY NICE IRID.)
333. 10 1/2" Imperial Ripple Standard Swung Vase - Pur. (desirable; really nice irid.)
334. Imperial Flute 2 Handled Open Sugar - Pur. (scarce with nice irid.)
335. IMPERIAL LOGANBERRY VASE - AMBER (RARE AND VERY DESIRABLE; GREAT COLOR AND NICE IRID.)
336. IMPERIAL CHATELINE TUMBLER - PUR. (RARE AND DESIRABLE WITH GREAT IRID. AND MANUF. GROUND BASE)
337. Imperial Grape Tumbler - Amy. (nice color and irid.)
338. Imperial Star Medallion Lg. Flared Tumbler - Mari. (scarce size)
339. Imperial Lustre Rose Tumbler - Mari.
340. **IMPERIAL DIAMOND LACE 7 PC. WATER SET - PUR. (VERY DESIRABLE SET WITH TYPICAL GREAT IRID.)**
341. Imperial Tiger Lily 7 pc. Water Set - Green (scarce set to find; well matched)
342. Imperial Octagon 8 pc. Wine Set - Mari. (nice color and irid.)
343. Imperial Diamond Sunburst Stemmed Wine Glass - Pur. (scarce item; nice)
344. Imperial Grape Stemmed Wine Glass with Plain Base - Lt. Mari.
345. Imperial Octagon Small size Water Pitcher with 6 Collar Based Tumblers - Dk. Mari. (nice color and irid.; attractive)
346. Imperial Flute Toothpick Holder - Odd Green (odd tint; nice)
347. Imperial Flute Toothpick Holder - Dk. Mari. nice color and irid.)
348. 9 3/8" Imperial Optic and Buttons Flat Plate - signed with Iron Cross - Pastel Mari. (super irid.)
349. 9" Imperial Grape Flat Plate - Mari. (nice color)
350. **8 3/4" IMPERIAL WIDE PANEL STRETCH DEEP ROUND FLARED BOWL - RED (REALLY NICE EXAMPLE; BRIGHT COLOR AND IRID.)**
351. Imperial Pansy Oval Relish Tray - Mari.
352. Imperial Diamond Sunburst 8 pc. Wine Set - Mari. (scarce set; nice)
353. Imperial Grape 8 pc. Wine Set - Helios Green (scarce set; nice color)
354. Imperial Grape 8 pc. Wine Set - Dk. Mari. (really nice color)
355. Imperial Grape Stemmed Wine Glass - Pur. (scarce; nice irid.)
356. Imperial Grape Stemmed Wine Glass - Lime Green (odd base color; limey)
357. (2) Imperial Grape Stemmed Wine Glasses - Helios Green (selling so much each)
358. Imperial Grape Stemmed Wine Glass with Plain Base - Pastel Mari. (nice irid.)
359. Imperial Grape Stemmed Wine Glass with Plain Base - Helios Green
360. **IMPERIAL FASHION 8 PC. RUFFLED PUNCH SET - SMOKE (THIS IS ONLY THE FOURTH I'VE SEEN AND ONLY ONE OTHER IS COMPLETE; DARK WITH GREAT IRID.)**
361. 5 1/2" IMPERIAL GRAPE FLAT PLATE - AQUA / TEAL (VERY RARE AND VERY DESIRABLE; AND IS DEFINITELY AQUA / TEAL)
362. 4 3/8" Imperial Octagon Flared ind. Berry Bowl - Pastel Amy. (super little item; sorta pastel with nice irid.)
363. Imperial Octagon 8 pc. Wine Set - Mari. (nice color and irid.)
364. Imperial Octagon Decanter and Stopper with Etched "1918 W.Z." - Mari. (nice color and irid.)
365. **3 1/2" TALL IMPERIAL OCTAGON STEMMED CORDIAL - MARI. (RARE ITEM IN THIS SIZE; REALLY TOUGH - NICE)**
366. 4 3/16" Tall Imperial Tulip and Cane Stemmed Wine Glass - Mari. (scarce; nice)
367. (2) 4 5/8" Tall Imperial Tulip and Cane Stemmed Wine Glasses - Mari. (scarce; nice - selling choice)
368. (3) 4 1/8" Tall Imperial 474 Stemmed Wine Glasses - Mari. (selling so much each or choice)
369. 5 1/2" Tall Imperial Optic and Buttons Stemmed Wine Glass signed with Iron Cross - Mari. (very scarce; nice color and irid.)
370. **TOP O' THE MORNING HATPIN - PUR. (VERY RARE NOVELTY - HAS SUPER IRID. - NICE)**
371. (2) 3 1/4" Tall Imperial (?) Wide Panel Stemmed Wine Glasses - Mari. (selling choice)
372. 2 7/8" Tall (Maker ?) European Enameled Cordial - Mari. / Smoke Flash (a cute little thing with nice enameling)
373. **3 7/8" TALL EUROPEAN "BERRY BAND" STEMMED CORDIAL - DK. MARI. (RARE AND DESIRABLE WITH NICE COLOR AND DETAIL)**
374. 3 7/8" Tall European "Stars and Bars" Stemmed Wine Glass - Mari. (another really nice item; nice color and irid.)
375. **EUROPEAN ZIPPER STITCH 7 PC. WINE SET WITH TRAY - MARI. (RARE SET; NICE COLOR WITH REALLY NICE IRID.)**
376. **EUROPEAN PINEAPPLE AND FAN 6 PC. WINE SET WITH TRAY - DK. MARI. (ANOTHER RARE SET WITH NICE COLOR AND IRID.)**
377. European Tiny Hobnail Decanter, Stopper, (1) Wine Glass and Tray - Mari. (scarce and desirable items; selling as a set)
378. (2) 3 3/4" Tall U.S. Glass Kings Crown Stemmed Wine Glass - Mari. (scarce)
379. 4" Tall Kings Crown Stemmed Wine Glass - Mari. Flash / Clear (scarce)
380. (6) European Moonprint Stemmed Wine Glasses - Mari. (selling so much each for the set)
381. European Stemmed Domed Wine Glass - Lt. Mari. (cute)
382. (Maker ?) Wide Panel Stemmed Wine Glass - Lt. Mari. (scarce)
383. (3) Etched Floral Spray Stemmed Wine Glasses - Mari. / Flash (scarce; selling choice)
384. Odd Stemmed Wine Glass - Clear Irid. / Green Stain (odd item)
385. (Maker ?) Etched Grape Stemmed Wine Glass - Mari. / Flash (odd item)
386. Odd Plain Stemmed Wine Glass - Mari.
387. (4) Maker ? Stemmed Etched Wine Glasses with Twisted Stems - Mari. (selling choice)
388. (2) Plain Stemmed Cordials - Lt. Mari. (selling choice)
389. Czech (?) Flared Wine Glass with Melon Rib Design - Mari. (odd item)
390. European Enameled Large Cruet or Decanter - Lt. Mari. (nice item with nice enameled decor.)
391. U.S. Glass "Ivy in Snow" Stemmed Goblet with "Souvenir of Brushton, N.Y." - Lt. Mari. (odd item)
392. Odd Etched Decanter with no Stopper - Lt. Mari.
393. 1972 ICGA Rochester, NY Plate - Clamb.
394. 1973 ACGA Staunton, VA Dresser Tray - Red
395. 1990, 1993, 1994, & 1995 HOACGA Table Favor Mugs - Asst. Colors (selling as a set)



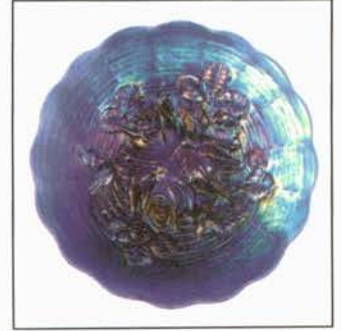
Lot #187



Lot #171



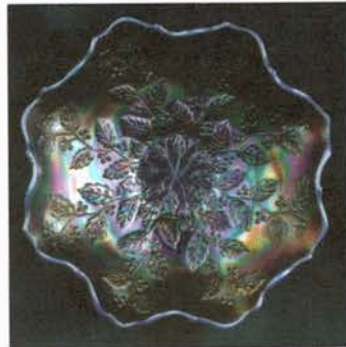
Lot #186



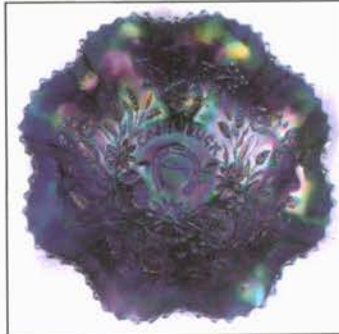
Lot #165



Lot #65



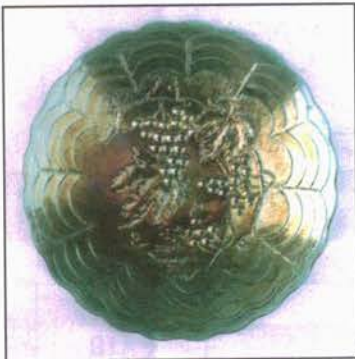
Lot #15



Lot #155



Lot #200



Lot #361



Lot #201



Lot #300



Lot #80



Lot #40



Lot #175



Lot #70



Lot #85



Lot# 101



Lot #180



Lot# 100



Lots #126, 125, 127



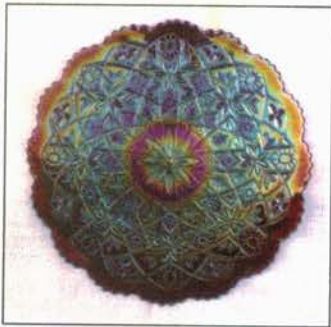
Lot #335



Lot #330



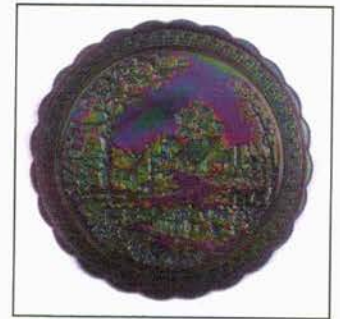
Lot #331



Lot #325



Lot #105



Lot #321

Burns Auction Service

P.O. Box 608
Bath, New York 14810

First Class
US Postage
PAID
Permit No. 7
Hammondsport, NY

Great Lakes Carnival Glass Club's "Glass Bash" Auction



Lot #7

**LEE MARKLEY
BOX 306
MENTONE IN 46539**