

BURNS

AUCTION SERVICE

Mid-Atlantic Carnival Glass Club Convention Auction

Friday & Saturday,
Oct. 24 & 25, 2003

Fri. Preview: 3 - 6:30 pm; Auction: 6:30 pm (Lots 1 - 210)
Sat. Preview: 8 - 9 am; Auction 9 am (Lots 211 - end)

at the

Venice Inn

431 Dual Highway (U.S. 40)
Hagerstown, MD 21740

1-301-733-0803

or for reservations only

1-800-2-VENICE



Lot #25



Lot #85



Lot #360



Lot #90



Lot #115



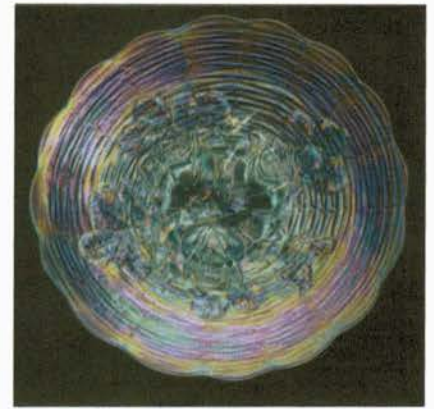
Lot #65



Lot #105



Lot #340



Lot #55



Lot #98



Lot #165



Lot #116



Lot #365

Coming Soon...

**Great Lakes Carnival Glass Club's
Convention Auction**

Nov. 1, Midway Motor Lodge, Lansing, MI

A selection of fantastic Carnival including the 1st known Dragon & Lotus Plate in Green AND the 1st known Fenton Ten Mums Chop Plate in Blue!

Hope everyone is having a wonderful Fall! For some reason our busy season is running late this year. This Convention auction will be the start of 3 or 4 we'll have by the end of the year. So... here we go!

This year's Mid-Atlantic Convention Auction is made up of a selection of the collection of Curt and Fran Vietti from Michigan as well as some other wonderful consignments from Ruby and Gretchen. This should be an excellent array and there is surely something for everyone. Hope to see ya there!

The Venice Inn of Hagerstown will host the event. It's located on Dual Highway (Rt. 30) and as most who have attended will attend, it's convenient to find a wonderful convention location you may make your reservations by calling the motel direct at 1-800-2-**VENICE**.

Mail, Email, and phone bids are due by Wednesday, October 22nd, 2003.

Burns Auction Service

Tom Burns
P.O. Box 608
Bath, New York 14810
(607) 776-7942 Cell: 731-9302

Bill Richards
44 Water Street, Poland OH 44514
(330) 757-2001
FAX (330) 757-4917

Bill Richards III
2253 Country Lane
Poland, OH 44514
(330) 755-2620

Mail Bids honored under the following conditions:

1. No deposit required. Bidders will take full responsibility to honor any and all bids we execute for them. Payment in full plus postage and handling required after notification and before we ship any item to them.
2. Items are bid on in perfect condition with average or above average iridescence OR as listed in the brochures. Bids will not be carried out when damage on an item has been found during the auction. **PEOPLE PRESENT AT THE AUCTION ARE RESPONSIBLE FOR FINDING ANY PINHEADS, WEAR, SPOTTINESS, MANUFACTURER'S DEFECTS OR ANY OTHER MINOR FLAWS, ETC.**
3. Successful bidders will be notified by collect call from the auctioneer **SO BE SURE TO INCLUDE PHONE NUMBER.**
4. Phone inquiries about the glass or any other questions are welcome.
5. If you have some other person at the auction bidding for you, they must pay for the item before taking it.
6. Any terms or conditions given the day of the auction will supersede any previously published information.
7. Mail, e-mail, fax and phone bids are due by Wednesday, October 22, 2003

Visit our website at: <http://www.woodsland.com/burnsauction/>

- | | |
|--|---|
| <p>___ 1. Pastel Swan - Pink</p> <p>___ 2. Pastel Swan - Celeste Blue</p> <p>___ 3. Pastel Swan - Lime Ice Green (scarce color)</p> <p>___ 4. Pastel Swan - Ice Green</p> <p>___ 5. DUGAN PASTEL SWAN - PURP. (RARE AND DESIRABLE; NICE COLOR)</p> <p>___ 6. (Maker?) Pastel Swan - Cranb. Flash (odd item)</p> <p>___ 7. Pastel Swan - Blue Opal. (not carnival; opal. is light)</p> <p>___ 8. Pastel Swan - Crystal</p> <p>___ 9. Lot of 5 Hatpins - (Crystal Blue Spider and Pink Big Butterfly - non iridized; Triad, Geometric Coolie Hat and 2 other - iridized) - Misc. Colors (selling choice)</p> <p>___ 10. SIGNED CRIDER GEOMETRIC BLOCK PATTERN PICKLE CASTOR AND S / P FRAME - MARI. (RARE AND UNUSUAL CONTEMPORARY ITEM; SUPER IRID.)</p> <p>___ 11. Devilbiss Stemmed Perfume and Stopper - Lt. Mari. (scarce; unsigned)</p> <p>___ 12. Devilbiss Stemmed Perfume and Atomizer - Lt. Mari. (scarce; unsigned)</p> <p>___ 13. 4" Tall Perfume Atomizer and Bulb - Lt. Mari.</p> <p>___ 14. 4 1/2" Tall Perfume Atomizer and Bulb (as is) - Lt. Mari. (bulb is damaged)</p> <p>___ 15. (MAKER ?) ART GLASS PERFUME ATOMIZER - MARI. / MILK GLASS (NOT SURE OF THE MAKER; SUPER ART GLASS LOOK)</p> <p>___ 16. 4 1/4" Wide Czech Covered Dresser Jar with Burnt Orange and Gold Decor. Lid - Lt. Mari. (unusual; attractive)</p> <p>___ 17. 3 1/4" Wide Czech Covered Round Pin Dish with Enam. lid - Lt. Mari. (unusual; scarce)</p> <p>___ 18. 2 1/2" Wide (Maker ?) Covered Round Pin Dish - Lt. Amy. Flash (odd item)</p> <p>___ 19. (2) Beaded Purses (1 - Dark Large with Draw String and 2 - Smaller with Metal Lapse) - Dark (selling choice; nice)</p> <p>___ 20. European Milady Covered Powder Jar - Mari. (scarce; nice color and detail)</p> <p>___ 21. Fenton Stretch Era Covered Cigarette Box with Etched Floral Decor. - Grecian Gold (very scarce item; has a couple of small chips)</p> <p>___ 22. (Westmoreland ?) 3 1/2" Tall Miniature Urn Shaped Ruffled Top Vase with Enameled Decor. - Mari. / Amy. Flash (really cute item)</p> | <p>___ 23. (Westmoreland ?) 3" Tall Miniature Enameled Decorated Vase - Lt. Mari. (pretty nice decor.)</p> <p>___ 24. 2 1/2" Tall (European ?) Stemmed Turned in Sherbet with Gold Floral Enameled Decor. - White (really nice decoration)</p> <p>___ 25. 2600 N LEAF AND BEADS FTD. ROSE BOWL - ICE GREEN OPAL. (VERY RARE AND EXTREMELY DESIRABLE; SUPER BASE COLOR AND OPAL.)</p> <p>___ 26. N LEAF AND BEADS FTD. ROSE BOWL - RENNINGER BLUE (RARE BASE COLOR TINT; TOUGH TO FIND)</p> <p>___ 27. N BEADED CABLE FTD. RUFFLED ROSE BOWL - AQUA OPAL. (VERY SCARCE AND DESIRABLE; RALLY NICE OPAL. AND IRID.)</p> <p>___ 28. N BEADED CABLE FTD. RUFFLED ROSE BOWL - ELEC. BLUE (VERY SCARCE AND VERY DESIRABLE; SUPER BLUE HIGHLIGHTS)</p> <p>___ 29. N BEADED CABLE FTD. RUFFLED ROSE BOWL - ODD FOREST GREEN (REALLY ATTRACTIVE EXAMPLE; ODD COLOR WITH SUPER IRID.)</p> <p>___ 30. N Fine Cut and Roses ftd. Rose Bowl with Fancy Interior - Dk. Ice Blue (rare and desirable base color; might have small chip on one foot)</p> <p>___ 31. N Fine Cut and Roses ftd. Rose Bowl - Green (very scarce and very attractive - has a brighter irid.; nice)</p> <p>___ 32. N Fine Cut and Roses ftd. Rose Bowl - Black Amy. (unusual - I cannot see through this item)</p> <p>___ 33. N Daisy and Plume ftd. Rose Bowl with Berry Int. - Purp. (scarce; nice irid.; has small chip under one foot)</p> <p>___ 34. N Daisy and Plume ftd. Rose Bowl with Berry Int. - Mari. (nice irid.; may have pinhead on foot)</p> <p>___ 35. 450 8 1/2" TALL N DRAPERY SWUNG VASE - PURP. (PROBABLY ONE OF THE RAREST COLORS FOR THIS PATTERN; HAS BRIGHT HIGHLIGHTS AND IS PERFECT)</p> <p>___ 36. 7 3/4" Tall N Drapery Swung Vase - Dk. Mari. (scarce; dark color and irid.; nice)</p> <p>___ 37. 10 1/4" Tall N Fern Panels Swung Vase - Dk. Mari. (scarce; attractive)</p> <p>___ 38. 10 1/2" Tall N Diamond Point Swung Vase - Mari. (nice satiny finish)</p> <p>___ 39. 11 1/2" Tall N Tree Trunk Standard Swung Vase - Crystal</p> <p>___ 40. 13 3/4" TALL x 4 5/8" BASE N TREE TRUNK MID SIZE SWUNG VASE - GREEN (RARE AND DESIRABLE; NICE BASE COLOR WITH SATINY HIGHLIGHTS)</p> |
|--|---|

- 395 41. 10 1/4" TALL N TREE TRUNK STANDARD SWUNG VASE – BLUE / ELEC. BLUE (RARE AND VERY DESIRABLE; NICE BASE COLOR AND BRIGHT HIGHLIGHTS)
42. 10 1/4" Tall N Tree Trunk Standard Swung Vase – Mari. (nice color and irid.)
- 3 25 43. 10 1/2" TALL N THIN RIB STANDARD SWUNG VASE – AQUA / TEAL (RARE COLOR AND PERFECT; HAS AN ODD TOP SHAPE – REALLY NICE)
44. 11" Tall N Thin Rib Standard Swung Vase – Emerald Green (very attractive base color and irid.; nice)
45. 8 1/4" TALL N FOUR PILLAR (VARIANT) MINIATURE SWUNG VASE – AQUA TEAL (RARE COLOR FOR THIS PATTERN IN THIS SIZE – REALLY ATTRACTIVE)
46. 10 3/4" Tall N Four Pillar Standard Swung Vase – Aqua Opal. (a perfect pastel example; has some dirt on top edge)
47. 10 1/2" N G & C Lg. 8 Ruffled Bowl with Basketweave Ext. – Elec. Blue (rare item with super irid. but has 1/2" chip on edge)
48. N G & C ftd. Hatpin Holder – Green (rare and desirable item with nice irid.)
49. N G & C Sweetmeat Whimsey Base – Amy. (base to the Sweetmeat; very scarce item; nice)
- 425 50. N G & C Perfume Bottle and Stopper – Purp. (rare with nice color and irid.; small chip on stopper stem)
51. N G & C Perfume Bottle and Stopper – Lt. Mari. (rare but bottles has a hairline; small ding on stopper)
52. N G & C Oval Pin Tray – Mari. (very scarce and has really nice irid.)
53. N Interior Swirl Tumbler – Mari. (nice color)
54. N Wide Panel (or Flute) Tumbler – Mari.
- 400 55. N ROSE SHOW FLAT PLATE – ICE BLUE (RARE, DESIRABLE AND A BEAUTY; HAS A NO HARM CHECK IN BASE)
56. N Rose Show 8 Ruffled Bowl – Ice Blue (another really nice item; small chip on Rose)
57. N Rose Show Flared Plate – Purp. (scarce and desirable; nice color; has a tiny chip on rose)
58. N Rose Show 8 Ruffled Bowl – Purp. (scarce item; nice but has epoxy on Rose and a small chip)
59. N ROSE SHOW 8 RUFFLED BOWL – MARI. (SCARCE AND DESIRABLE; NICE COLOR W/ MINOR MANUF. SPLIT ON EDGE)
- 650 60. N ROSE SHOW FLARED PLATE - BLUE (RARE AND DESIRABLE AND PERFECT)
61. N Rose Show 8 Ruffled Bowl – Ice Blue Opal. (rare and desirable base color w/ tiny chip on base)
- 275 62. N ROSE SHOW FLARED PLATE - WHITE (VERY SCARCE AND DESIRABLE; PERFECT W/ NICE IRID.)
63. N Rose Show 8 Ruffled Bowl – odd White (another very scarce item w/ nice color and irid.)
64. N Oriental Poppy Tumbler – Elec. Purp. (super irid.; nice)
- 1200 65. N EMBROIDERED MUMS FLARED PLATE WITH PLAIN EXT. – WHITE (EXTREMELY RARE ONE OF A KIND; IRID. IS A LIGHT GOLD, BUT FIND ANOTHER)
- 525 66. N POPPY SHOW FLAT PLATE – MARI. (RARE AND VERY DESIRABLE; PERFECT WITH NICE COLOR AND DETAIL)
67. N Poppy Show 8 Ruffled Bowl – Mari. (very scarce; nice color and irid.)
68. N ROSE SHOW VARIANT FLARED PLATE WITH RIBBED EXT. – RENNINGER BLUE (RARE ITEM; NICE IRID.; HAS A FLAKE ON SIDE OF ONE TOOTH)
- 400 69. N Rose Show Variant 8 Ruffled Bowl with Ribbed Ext. – Renninger Blue (rare and desirable; nice irid.; has epoxy on one point)
70. N HEARTS AND FLOWERS 8 RUFFLED BOWL WITH RIBBED EXT. – DK. MARI. (RARE AND DESIRABLE; NICE DARK COLOR AND IRID.)
71. N Hearts and Flowers 8 Ruffled Bowl with Ribbed Ext. – White (very scarce; nice and frosty; has small chip)
72. N Hearts and Flowers 8 Ruffled Bowl with Ribbed Ext. – Ice Blue (nice color and irid, but has chip off one tooth)
73. N Hearts and Flowers Stemmed 6 Ruffled Compote with Ribbed Ext. – odd White (almost wants to be an ice blue; probably lead content)
74. N STRAWBERRY PLATE WITH PLAIN EXT. – DK. MARI. (SCARCE AND VERY ATTRACTIVE; SUPER COLOR)
75. N Round Handled Bushel Basket – Aqua with Light Opal. (rare and desirable; has opal. near base of handle)
76. N Round Handled Bushel Basket - Blue (scarce; nice color with average irid.)
77. N Round Handled Bushel Basket – Purp. (scarce; nice color with average irid.)
78. N Eight sided Handled Bushel Basket – White (scarce; frosty with nice irid.)
79. N Diamond Point Round Handled Bushel Basket – Crystal
80. N FRUIT AND FLOWERS HANDLED STEMMED BON BON – ELEC. BLUE (SCARCE WITH SUPER BLUE HIGHLIGHTS)
81. 7 1/2" N Fruits and Flowers 6 Ruffled Bowl with Basketweave Ext. – Emerald Green (very scarce; super color and irid.; may have some wear)
82. N Three Fruits Flared Plate with Basketweave Ext. – Crystal (actually quite a rare crystal item)
83. N Butterfly Handled 4 sided Bon Bon with Plain Ext. – Amy. (light base color; satiny)
84. 11" Tall N Fine Rib Swung Vase – Green (scarce; nice color)
- 900 85. N HEARTS AND FLOWERS BOWL WITH P.C.E. AND RIBBED EXT. – ELEC. BLUE (ABSOLUTELY SUPER ITEM WITH BRIGHT BLUE IRID.; REALLY NICE)
- 750 86. N HEARTS AND FLOWERS BOWL WITH P.C.E. AND RIBBED EXT. – ICE BLUE (RARE AND VERY DESIRABLE; GREAT SHAPE AND NICE IRID.)
- 2000 87. N HEARTS AND FLOWERS 8 RUFFLED BOWL WITH RIBBED EXT. – EMERALD GREEN (ANOTHER ABSOLUTELY SUPER ITEM WITH A BRIGHT GREEN FINISH)
- 600 88. N HEARTS AND FLOWERS 8 RUFFLED BOWL WITH RIBBED EXT. – ICE GREEN (RARE AND VERY DESIRABLE; NICE COLOR AND IRID.)
- 650 89. N HEARTS AND FLOWERS STEMMED 6 RUFFLED COMPOTE WITH RIBBED EXT. – AQUA OPAL. (RARE AND DESIRABLE; REALLY NICE COLOR AND IRID.)
- 1600 90. N GOOD LUCK 8 RUFFLED BOWL WITH RIBBED EXT. – AQUA OPAL. (VERY RARE ITEM; PROBABLY ONE OF THE NICEST BUTTERSCOTCH EXAMPLES YOU'LL FIND)
- 450 91. N PEACOCKS 8 RUFFLED BOWL WITH RIBBED EXT. – AQUA OPAL. (AN EXCELLENT EXAMPLE WITH A SUPER PASTEL LOOK)
- 550 92. 9 1/2" N PEACOCK AT THE URN TURNED IN LG. ICE CREAM BOWL – PASTEL MARI. (ABSOLUTELY SUPER BRIGHT IRID.; SORTA TURNED IN)
93. N Fine Cut and Roses ftd. Ruffled Rose Bowl with Fancy Int. – Ice Blue (rare and desirable; perfect with pastel highlights)
94. N Beaded Cable ftd. Ruffled Rose Bowl – Dk. Mari. (a dark satiny example)
- 415 95. N THREE FRUITS STIPPLED 8 RUFFLED BOWL WITH RIBBED EXT. – DK. MARI. (RARE AND VERY DESIRABLE; SUPER DARK COLOR AND IRID.)
- 450 96. N POINSETTIA AND LATTICE FTD. 8 RUFFLED BOWL WITH RIBBED EXT. – DK. MARI. (RARE AND VERY DESIRABLE; SUPER DARK COLOR AND IRID.)
97. N G & C ftd. Hatpin Holder – Green (very scarce and desirable with nice irid.)
- 500 98. N EMBROIDERED MUMS 8 RUFFLED BOWL WITH RIBBED EXT. – MARI. / PASTEL MARI. (RARE AND DESIRABLE; HAS A HONEY AMBER LOOK WITH SUPER IRID.)
99. N BASKET OF ROSES (?) STIPPLED HANDLED 4 SIDED BON BON WITH BASKETWEAVE EXT. – DK. MARI. (VERY RARE EXAMPLE WITH SUPER IRID.; NICE)
- 1000 100. N ROSE SHOW VARIANT FLARED PLATE WITH RIBBED EXT. – BLUE / ELEC. BLUE (RARE AND VERY DESIRABLE; PERFECT WITH BRIGHT IRID.)
101. Sowerby Pineapple Rose Bowl – Dk. Mari. (nice color and irid.)
- 400 102. M'BURG TROUT AND FLY BOWL WITH 3 IN 1 EDGE – LT. AMY. / HOREHOUND (RARE SATINY BASE COLOR AND IRID.; REALLY TOUGH)
103. Dugan Dogwood Spray domed 8 Ruffled Bowl – P. Opal. (nice color and opal.)
104. Dugan Leaf Rays Handled Sauce – White (frosty with nice irid.)
105. DUGAN ROUND UP FLARED PLATE – PURP. (EXCELLENT EXAMPLE WITH GREAT BASE COLOR AND RED AND BLUE HIGHLIGHTS)
- 500 106. 6 1/2" DUGAN WISHBONE AND SPADES FLAT PLATE WITH PLAIN EXT. – PURP. (VERY SCARCE AND VERY DESIRABLE WITH SUPER IRID.)
107. 6 3/4" Dugan Pods and Posies Flat Plate with Plain Ext. – P. Opal. (scarce and very desirable with nice opal. and irid.)

108. 8" Dugan Fanciful I.C. Shaped Bowl – P. Opal. (nice irid. and opal. near the edge)
109. **5 1/2" TALL x 5 1/2" WIDE DUGAN LINED LATTICE SQUATTY FLARED VASE – P. OPAL. (VERY SCARCE SIZE AND SHAPE WITH NICE OPAL.)**
110. **10 1/2" TALL DUGAN PULLED LOOP SWUNG VASE – BLUE (RARE BASE COLOR WITH BRIGHT COLOR AND IRID.)**
111. Dugan Persian Garden (Basketweave) Ruffled Fruit Bowl Base only – Lt. Amy. / Lavender (Boy! I wish I had the top for this set – super)
112. 11 1/4" Dugan Persian Garden Lt. I.C. Bowl – White (very scarce with super frosty irid.)
113. Imperial Flute Toothpick Holder – Mari. (nice color)
114. Imperial Pansy Oval Relish Tray – Smokey / Mari. (odd tint with super irid.)
- 1750 115. **IMPERIAL CHRYSANTHEMUM FLAT CHOP PLATE – PURP. (VERY RARE AND VERY DESIRABLE WITH SUPER DETAIL AND IRID.)**
116. **IMPERIAL HOMESTEAD CHOP PLATE – HONEY AMBER – ANOTHER RARE COLOR WITH GREAT DETAIL AND IRID.)**
117. Imperial Open Rose Flared Plate – Amber – (scarce with really nice irid.)
118. 5" Tall x 4" Flared Imperial Morning Glory and Drape Miniature Swung Vase – Dk. Mari. (scarce variation with really nice color)
119. Imperial Columbia domed 6 Ruffled Compote – Mari. (nice color and irid.)
120. **14" TALL x 6" FLARED x 4 3/4" BASE IMPERIAL MORNING GLORY LG. SWUNG FUNERAL VASE – PURP. (RARE AND EXTREMELY DESIRABLE; IMPRESSIVE WITH SUPER IRID.)**
121. 12 Tall x 3 1/4" Base Imperial Ripple Mid-size Swung Vase – Purp. (scarce with super color and irid.; nice)
122. **IMPERIAL GRAPE WATER CARAFE – PURP. (VERY SCARCE; HAS BRIGHT MULTI-COLORED IRID.)**
123. 7 1/2" Tall x 3 1/4" Base x 6" Flare Imperial Ripple Squatty Swung Vase – Amber (very scarce color; nice irid.)
124. Imperial Interior Panel 2 pc. Tumble Up – Smoke (scarce with super bright irid.)
125. Pair Imperial Paneled Octagonal Based Candlesticks – Smoke (scarce with super bright irid.)
126. 6" Tall x 4 3/4" Flare Signed Imperial Iron Cross Bulbous Pinched in 8 Ruffled Vase – Purp. (attractive item; but has a hairline)
127. Fenton Garland ftd. Rose Bowl – Blue / Elec. Blue (really nice example)
128. Fenton Persian Medallion 2 Handled 4 sided Bon Bon – Blue (nice color)
129. 8 3/4" Fenton Butterfly and Berry Swung Vase – Mari. (nice color)
130. **11 – 11 1/2" TALL FENTON FINE RIB MID-SIZE SWUNG VASE – RED (RARE SIZE WITH BRIGHT IRID.; HAS 2 SMALL PEELING FLAKES ON TOP EDGE)**
131. 15 1/2" Tall Fenton Diamond Point Columns Mid-size Swung Vase – Blue (really nice example with brighter irid.)
132. 16 1/4" Tall Fenton Rustic Mid-size Swung Vase – Dk. Mari. (nice dark color and irid. with a nice flare)
133. 11 1/4" Tall Fenton Plume Panels Swung Vase – Mari. (nice color and irid.)
134. 8" Tall Fenton Diamond Rib Squatty Swung Vase – Mari. (satiny finish)
- 800 135. **9 1/2 – 9 3/4" FENTON TEN MUMS FTD. BOWL WITH 3 IN 1 EDGE – GREEN (RARE AND VERY DESIRABLE ITEM WITH A NICE BRIGHT SATINY FINISH)**
136. **FENTON FLOWERS FTD. ROSE BOWL – GREEN (RARE COLOR AND AN EXCELLENT EXAMPLE WITH PERFECT FEET AND GREAT IRID.)**
137. 9 1/2" Fenton Vintage Grape Lg. I.C. Shaped Bowl – Blue (nice size with really nice base color)
138. 12" Fenton Knotted Beads odd Swung Vase – Blue (odd swung item; nice detail and irid.)
139. 8" Tall Fenton April Showers Squatty Swung Vase – Amy. (satiny)
- 875 140. **8 3/4" FENTON PEACOCK AND GRAPE 8 RUFFLED BOWL – AMBERINA (RARE AND DESIRABLE; HAS A NICE RED SATINY FINISH)**
141. 8 1/2" Fenton Chrysanthemum 8 Ruffled Bowl – Amy. (satiny; scarce)
142. 9" Fenton Holly 8 Ruffled Bowl – Amber (rare base color with a dark satiny finish)
143. 8 3/4" Fenton Dragon and Lotus 8 Ruffled Bowl – Mari. (satiny)
144. 7 1/2" Fenton Horsehead Medallion Flat Plate – Mari. (very scarce; nice detail and satiny irid.)
- 900 145. **7" FENTON ACORN I.C. SHAPED BOWL – RED (RARE AND DESIRABLE WITH A SUPER SATINY FINISH)**
146. 7 1/2" Fenton Acorn 8 Ruffled Bowl – Aqua / Mari. (scarce base color with a mari. overlay)
147. **9 1/4" FENTON DRAGON AND STRAWBERRY I.C. SHAPED BOWL – MARI. (RARE AND DESIRABLE; LIGHT COLOR WITH BRIGHT IRID.)**
148. 9" Fenton Cherry Chain I.C. Shaped Round Bowl – White (scarce item; has super frosty irid.)
149. 8 3/4" Cambridge Inverted Thistle I.C. Shaped Bowl – Crystal (scarce)
150. **CAMBRIDGE INVERTED STRAWBERRY SPITTOON – GREEN (RARE AND DESIRABLE WITH GREAT IRID.; HAS SPOT OF EPOXY ON EDGE)**
151. M'Burg Hobnail Spittoon – Amy. (nice shelf item; has a crack across the top edge)
152. 7" M'burg Blackberry Wreath I.C. Shaped Bowl – Mari. (radium and nice)
153. 8 1/4" M'burg Blackberry Wreath I.C. Shaped Bowl – Amy. (satiny finish)
154. 6 3/4" M'burg Strawberry Wreath Variant 6 Ruffled Bowl – Green (attractive radium finish; nice)
155. 10 1/4" M'burg Fleur de Lei Lg. 6 Ruffled Bowl – Amy. (rare and desirable with great radium irid.; has a tiny chip on top edge)
156. 9 1/2" M'burg Peacock Lg. Flared Master Berry Bowl – Amy. (radium and nice; has chip on inside edge)
157. 10 1/4" M'burg Rosiland Lg. 6 Ruffled Bowl – Amy. (very scarce and has a satiny finish)
158. 8 1/4" M'burg Grape Wreath Variant Bowl with 3 in 1 Edge – Amy. (scarce and has a nice radium finish)
159. 9" M'burg Peacock at the Urn "Mystery" Bowl with 3 in 1 Edge – Lt. Mari. (very scarce; light satiny finish)
- 395 160. **M'BURG LEAF AND LITTLE FLOWERS FTD. FLARED MINIATURE COMPOTE – GREEN (RARE AND VERY DESIRABLE; HAS A SUPER RADIUM FINISH)**
161. M'burg Diamond Tumbler – Mari. (nice satiny irid.)
162. **9 1/2" AUSTRALIAN THUNDERBIRD LG. 12 RUFFLED BOWL – MARI. (VERY SCARCE; HAS A NICE BRIGHT FINISH)**
163. Imperial Chateline Tumbler – Crystal (scarce)
164. Imperial Chateline Handled Water Pitcher – Crystal (scarce; has a hairline)
165. **6 1/2" IMPERIAL GRAPE FLAT PLATE – AMY. (VERY SCARCE WITH A NICE BRIGHT MULTI-COLORED IRID.)**
166. 9 1/4" Imperial Grape Flat Plate – Green (scarce and actually an attractive example)
167. 9" Imperial Open Rose Flat Plate – Dk. Mari. (nice irid.)
168. 7 1/2" Tall x 3 1/2" Base x 6 3/4" Flare Imperial Smooth Panels Squatty Flared Vase – Smoke (scarce size with super irid.)
169. 3 1/2" Tall x 5 1/2" Diam. Imperial Interior Wide Panel Turned In Rose Bowl – Smoke (very scarce item with super irid.)
170. Imperial Grape Decanter and Stopper – Smoke (rare item with super irid.; insert end of stopper is damaged)
171. 12" Tall Imperial Free Fold Swung Vase – Smoke (very scarce with super irid.)
172. Imperial Little Barrel Novelty with Original label – JAS. Monogram and Co. Rose City, Mich. – Smoke (scarce; has flake on spout, but neat label)
173. 9" Imperial Pansy 8 Ruffled Bowl – Amber (scarce color; nice)
174. Imperial Grape Tumbler – Purp. (desirable; a super example)
- 410 175. **IMPERIAL EMBOSSED SCROLL MINIATURE ROUND STEMMED NUT CUP OR COMPOTE – PURP. (RARE AND VERY DESIRABLE; PERFECT WITH BRIGHT IRID.)**
176. **18 3/4 – 19" TALL x 4 3/4" BASE x 6" FLARE IMPERIAL RIPPLE SWUNG FUNERAL VASE – MARI. (A REALLY LARGE ITEM; PERFECT WITH NICE IRID.)**
177. 12 1/2" Tall x 3 5/8" Base x 5 1/2" Flare Imperial Ripple Mid-size Swung Vase – Mari. (nice color, irid. and size)
178. 10 1/2" Tall Imperial Ripple Standard Swung Vase – Dk. Mari. (nice color and irid.)
179. 10 5/6" Tall Imperial Ripple Standard Swung Vase – Smokey / Honey Amber (super irid. and seems to have an odd tint)
180. **13 1/8" TALL x 3 3/8" BASE x 4 5/8" FLARE IMPERIAL RIPPLE MID-SIZE SWUNG VASE – PURP. (SCARCE AND HAS SUPER IRID.)**
181. 7 1/4" Tall Imperial Ripple Miniature Swung Vase – Green (scarce size; pretty nice)
182. (1) 9 5/8" & (1) 9" Tall Imperial Ripple Miniature Swung Vases – Clamb. (nice irid.; selling choice)
183. 10 3/4" Tall Imperial Beaded Bullseye Swung Vase – Dk. Mari. (nice color and irid.)
184. 10 1/2" Tall Imperial Interior Panels Flared Swung Vase – Dk. Mari. (really nice color and irid.)

185. **7 1/4" TALL IMPERIAL MINIATURE MORNING GLORY SWUNG VASE – GREEN (SCARCE; NICE COLOR)**
186. 6 1/4" Tall Imperial Miniature Morning Glory Swung Vase – Pastel Mari. (scarce; nice irid. with an odd flare)
187. 6" Tall Imperial Miniature Morning Glory Swung Vase – Mari. (nice color)
188. Imperial Swirl Paneled J.I.P. Vase – Mari. (really nice)
189. (3) Imperial Heavy Grape ind. Round Berry Bowls – Dk. Mari. (nice color; selling so much each for set)
190. 8" Tall x 4 3/4" Base Imperial Zipper Loop Kerosene Lamp – Crystal (scarce)
191. Imperial Tiger Lily Handled Water Pitcher – Dk. Mari. (nice color)
192. Imperial Poinsettia Handled Milk Pitcher – Dk. Mari. (super irid.)
193. Imperial Hobstar Band Stemmed 8 Ruffled Flared Compote – Mari. (very scarce shape for this pattern)
194. Imperial "Diamond Band" (?) Stemmed Spittoon Shaped 6 Ruffled Compote – Mari. (scarce; nice irid.)
195. **8" DIAM. X 4" TALL IMPERIAL ROCOCO DOMED ROUND LARGE BERRY BOWL – MARI. (RARE ITEM IN THIS PATTERN; FIRST I'VE SEEN IN THIS SHAPE)**
196. Imperial Pansy Oblong Relish Tray – Mari.
197. Imperial Frosted Block Rose Bowl – Clamb. (scarce; nice irid.)
198. Jeanette Lg. Butterfly Dresser Tray – Pink Stain / Irid. (scarce; odd color)
199. Jeanette Miniature Butterfly Pin Tray – Pink Stain / Irid. (scarce; odd color)
200. Jeanette Lg. Butterfly Dresser Tray – Light Blue / Irid. (another scarce example; odd color)
201. Jeanette Lg. Butterfly Dresser Tray – Gray / Clear Irid. (scarce; different)
202. Jeanette Lg. Butterfly Dresser Tray – Mari. (typical color)
203. **4 5/8" X 3 1/2" WESTMORELAND FIGURAL ORNAMENTAL BUTTERFLY – BLUE / GRAY FLASH (RARE ITEM; A BIT LARGER SIZED EXAMPLE)**
204. Westmoreland Contemporary Figural Ornamental Butterfly – Purp. (new item)
205. Interior Paneled Covered Candy Jar – Clear / Irid. (nice irid.)
206. Interior Paneled Covered Candy Jar with Cathedral lid – Clear / irid. (nice irid.)
207. (Maker ?) Odd Etched Decanter L. Cut Stopper and 2 Cordial – Clear Irid. (cordials are neat)
208. German 3 pc. Cordial Set with Enam. Sailing Ship Decoration and no Stopper – Mari. (unusual; may need stopper)
209. East German Spittoon Shaped Stretch Art Glass Vase – Red (great irid. and color)
210. East German 2 sided Hat Shaped Art Glass Vase – Red (great irid. and color)

START OF SECOND SESSION

211. Edwards Carnival Glass Book II
212. 3 Small Lots of Misc. Buttons – Dark (selling choice)
213. Coca Cola Small Size Tumbler – Lt. Mari. (scarce)
214. Coca Cola Lg. Size Tumbler – Lt. Mari. (scarce)
215. Westmoreland Estate Breakfast Sugar and Creamer – P. Opal. (scarce pair with nice opal.)
216. **MAKER (?) HANDLED DINNER BELL WITH STENCILED "SOUVENIR OF LOWELL, MICH." – SORTA DK. MARI. (VERY SCARCE ITEM WITH NICE IRID. AND LETTERING)**
217. Dugan Beaded Basket – 2sides up – Dk. Mari. (nice color)
218. (6) Dugan Rambler Rose Tumblers – Mari. (selling so much each for set)
219. 3 3/4" Tall (Maker ?) Miniature Hand Vase – P. Opal. (scarce item; nice opal.)
220. **7 3/4" TALL DUGAN CIRCLE SCROLL SWUNG VASE – PURP. (A SUPER EXAMPLE WITH REALLY BRIGHT IRID.)**
221. **4 3/4" TALL DUGAN BIG BASKETWEAVE SQUATTY FLARED VASE – BLACK AMY. (VERY RARE ITEM; IRID. IS SATINY; NICE)**
222. Unusual 9 1/2" Tall Dugan "Zipper Panels" Swung Bud Vase – Crystal (unusual item I don't remember seeing before)
223. 5 1/2" Tall x 5 1/2" Flare Dugan Lined Lattice Squatty Flared Vase – Crystal (haven't seen another)
224. Dugan Paneled Ribbed J.I.P. Vase with tight C.R.E. – P. Opal. (very attractive item with nice opal. and irid.)
225. **9" TALL DUGAN VINING TWIGS SWUNG VASE – PURP. (ANOTHER FANTASTIC ITEM WITH SUPER IRID.; REALLY NICE!)**
226. Dugan Maple Leaf Handled Water Picher – Purp. (very scarce with a bright satiny finish)

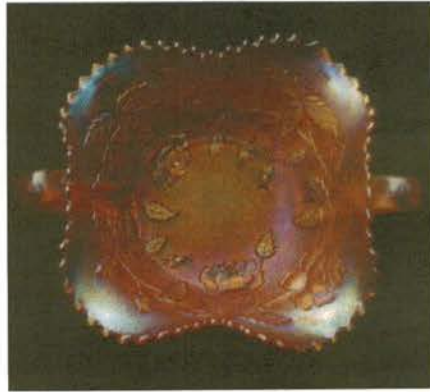
227. Dugan Maple Leaf Tumbler – Purp. (matches above item)
228. 6 3/4" Dugan Persian Garden Flat Plate – Mari. (satiny; irid. a bit light in center)
229. 6" Dugan Cherries low 8 Ruffled Sauce with J.H. Ext. – P. Opal. (satiny irid.)
230. **DUGAN HONEYCOMB ROSE BOWL – DK. P. OPAL. (HAS TO BE ONE OF THE BEST EXAMPLES I'VE SEEN)**
231. 6 1/2" Tall Dugan Interior Swirl Tri-Pinched In Vase – P. Opal. (scarce; nice irid. and opal. edge)
232. 7 1/4" Tall Dugan Venetian Line Shaped Tall Pinched Neck Vase – P. Opal. (scarce; nice opal. and irid.)
233. 8 3/4" Dugan Caroline Bowl with 3 in1 Edge – P. Opal. (attractive shape)
234. 8 1/2" Dugan Apple Blossom Twig 10 Ruffled Bowl – P. Opal. (nice color and opal.)
235. **10 1/4" TALL DUGAN BIG BASKETWEAVE SWUNG VASE – WHITE (VERY SCARCE; FROSTY WITH GREAT IRID.; HAS AN ODD EDGE)**
236. 7" Dugan Fishscale and Beads Flat Plate – Mari. (scarce; nice dark satiny irid.)
237. 6 1/2" Dugan Question Stemmed 6 Ruffled Crimped Edge Compote with Ga. Peach and Puzzle Ext. – Mari. (sorta radium; really bright irid.)
238. Dugan Paneled Cherries ftd. 10 Ruffled Bowl – Dk. Mari. (satiny)
239. **8" M'BURG LITTLE STARS 6 RUFFLED BOWL – GREEN (VERY SCARCE AND HAS A SATINY FINISH)**
240. **8 1/8" x 8 1/8" SQUARE FOSTORIA BROCADED PALMS FLAT PLATE – PINK / GOLD TRIM (RARE ITEM IN THIS SHAPE; NICE IRID. AND GOLD TRIM)**
241. N Lustre Flute 6 Ruffled Hat – Purp. (satiny irid.)
242. N Raspberry ftd. Handled Gravy Boat – Purp. (scarce item with nice irid. and pretty good feet)
243. 9" N Grape Leaves 8 Ruffled Bowl – Purp. (nice irid.)
244. 7 5/8" N G & C 6 Ruffled Bowl with Basketweave Ext. – Purp. (nice irid.)
245. **9" N THREE FRUITS STIPPLED PLATE WITH RIBBED EXT. – VIOLET (RARE BASE COLOR; NICE RED AND BLUE HIGHLIGHTS)**
246. **N PEACOCK AT THE URN ALL OVER STIPPLED IND. I.C. BOWL – ELEC. BLUE (SUPER IRID.; VERY ATTRACTIVE)**
247. **5 3/4" N PEACOCK AT THE URN FLARED IND. I.C. BOWL O PLATE – DK. MARI. (ODD FLARE; ALMOST WANTS TO BE A PLATE)**
248. 5 3/4" N Peacock at the Urn Flared ind. I.C. Bowl or Plate – Mari. (almost like above item; great color and irid.)
249. **8 3/4" N NIPPON 8 RUFFLED BOWL WITH BASKETWEAVE EXT. – DK. MARI. (SCARCE AND DESIRABLE WITH RED HIGHLIGHTS)**
250. **N HEARTS AND FLOWERS 8 RUFFLED BOWL WITH PLAIN EXT. – WHITE (VERY SCARCE AN VERY DESIRABLE; HAS ODD YELLOW IRID.)**
251. **8 1/4" TALL N DRAPERY VARIANT SWUNG VASE – DK. MARI. (VERY SCARCE ITEM IN THIS COLOR; REALLY NICE)**
252. 8" Tall N Drapery Swung Vase – Dk. Mari. (scarce; nice dark color and irid.)
253. 9" Tall N Tree Trunk Standard Swung Vase – Mari. (nice color)
254. 11 1/4" Tall N Thin Rib Standard Swung Vase – Russet Green (nice color and irid.)
255. 13 1/4" TALL x 4 5/8" BASE x 6" FLARE N THIN RIB MID-SIZE SWUNG VASE – DK. MARI. (VERY SCARCE; NICE DARK COLOR AND IRID. – REALLY NICE ITEM)
256. 5 ?" Tall Imperial Miniature Morning Glory Swung Vase – Dk. Mari. (nice color and irid.)
257. 7 3/8" Tall Imperial Swirl Vase – Smoke (nice irid.)
258. 6" Tall Imperial Laurel Band Vase – Mari. (nice color)
259. 6 3/8" Tall Imperial "Balloon" Etched Vase – Dk. Mari. (attractive item)
260. **18" TALL X 4 15/16" BASE X 6 3/4" FLARE IMPERIAL MORNING GLORY (PARLOR PANELS) SWUNG FUNERAL VASE – PURP. (RARE AND VERY DESIRABLE; GREAT SIZE)**
261. **7 1/4" TALL x 5" FLARE IMPERIAL RIPPLE SQUATTY SWUNG STANDARD SIZE VASE – PURP. (SCARCE AND HAS VERY ATTRACTIVE IRID.)**
262. 10 1/2" Tall Imperial Ripple Standard Swung Vase – Dk. Mari. (nice color and irid.)
263. 11 1/4" Tall Imperial Beaded Bullseye Swung vase – Dk. Mari. (nice color and irid.)

264. 12 1/2" Tall Imperial Free Fold Swung Vase – Smoke (scarce item with excellent irid.)
265. **14" TALL x 4 3/8" BASE x 7" FLARE IMPERIAL INTERIOR paneled SWUNG FUNERAL VASE – SMOKE (ODD AND ATTRACTIVE ITEM WITH NICE IRID.)**
266. **7 3/4" x 7 3/4" SQUARE IMPERIAL FROSTED BLOCK FLAT PLATE – SMOKE (RARE ITEM I DO NOT RECALL SEEING IN THIS COLOR)**
267. 6 3/16" Imperial Tree in One I.C. Shaped Bowl – Smoke (super irid.)
268. 6 1/2" Imperial Grape Flat Plate – Dk. Mari. (nice color and irid.)
269. 10 1/2" Imperial Floral and Optic ftd. Flat Plate – Pastel Mari. (super irid.)
270. 5 1/2" Signed Iron Cross Imperial Bulbous Turned in Vase – Mari. (scarce and attractive item; nice shape and irid.)
271. 6 5/8" Tall Fenton Diamond Point Columns Squatty Swung Vase – Mari.
272. 11 1/4" Tall Fenton Wide Panel Swung Vase – Mari. (satiny)
273. 7 3/4" Tall Fenton Long Thumbprint Swung Vase – Amy.
274. 17" Tall x 3 3/4" Base x 4 3/4" Flare Fenton Fine Rib Mid size Swung Vase – Blue (really nice example)
275. **11" TALL FENTON KNOTTED BEADS SWUNG FLARED VASE – GREEN (SUPER EXAMPLE; VERY ATTRACTIVE)**
276. Fenton Butterfly and Berry ftd. Round ind. Berry Bowl – Mari.
277. Fenton Blackberry 2 Row Open Edge Basketweave 6 Ruffled Hat – Mari.
278. Fenton Two Row Open Edge 2 sided Hat – Lt. Aqua / Mari. (scarce base color)
279. 6" Fenton Little Flowers 6 Ruffled Sauce – Aqua / Mari. (scarce and desirable color)
280. **FENTON STRETCH LARGE MELLON RIB FAN VASE – TANGERINE (RARE AND DESIRABLE; OPENING IS SMALLER)**
281. 9" Fenton Holly 8 Ruffled Bowl – odd Light Amber (scarce base color)
282. 9" Fenton Dragon and Lotus 8 Ruffled Bowl – Amy. (satiny; average irid.)
283. 9" Fenton Peacock and Grape 8 Ruffled Bowl – Mari. (nice color)
284. Lot (3) odd 20's – 30's Light Shades with Etched Designs – White (selling choice)
285. Czech Castle Scene Light Shade – Mari. (nice enameled decoration)
286. 8" Tall Imperial Miniature Morning Glory Swung Vase – Mari. (nice color)
287. Pair 1 5/8" Tall x 3 3/4" Base Fenton Plain Squatty Candlesticks – Mari.
288. 9 5/8" Tall U.S. Glass Candlestick Vase – Celeste Blue
289. Pair 3 1/2" Tall x 4 3/4" Base Fenton Stretch Squatty Candlesticks – Velva Rose (nice color)
290. **PAIR 10 1/2" TALL NORTHWOOD FLORENTINE STYLE STRETCH paneled CANDLESTICKS – DK. CELESTE BLUE (ATTRACTIVE LARGE PAIR; DARK COLOR)**
291. Pair 8 1/2" Tall Fenton Stretch Florentine Candlesticks – Celeste Blue (lighter in base color; well matched)
292. **PAIR 6 1/4" TALL FENTON "PORTLY" CANDLESTICKS – GRECIAN GREEN (SCARCE PAIR)**
293. Pair 7 1/2" Tall (Maker ?) Paneled Candlesticks on Round Base – Clear / Irid. (unusual pair)
294. Pair 8 1/4" Tall x 4" Base (Maker ?) 4 sided Square Candlesticks – Clear / Irid. (another odd pair)
295. **PAIR 6 7/8" TALL NORTHWOOD STRETCH 6 SIDED paneled CANDLESTICKS – IRID. CUSTARD (RARE AND DESIRABLE PAIR; GREAT COLOR AND IRID.)**
296. **PAIR 8 1/2" TALL NORTHWOOD STRETCH ROUND KNOBBED CANDLESTICKS – RUSSET GREEN (RARE PAIR; NOT SURE OF PROPER NAME – REALLY NICE)**
297. Pair 8 1/2" Tall Imperial Double Scroll Candlesticks – Mari. (nice color)
298. Pair 6 7/8" Tall Imperial 6 sided Paneled Candlesticks – Pastel Mari. (nice irid.)
299. Pair 8 3/8" Tall Imperial Premium Candlesticks – Mari. (nice color)
300. Pair 8 7/8" Tall Imperial 8 sided Wide Panel Candlesticks – Smoke / Clear (scarce; nice irid.)
301. Pair 8 1/8" Tall Diamond Bell Shaped Candlesticks – Blue (scarce pair; silvery irid.)
302. Pair 7 3/4" Tall Diamond Bell Shaped Candlesticks – Mari (very scarce color for this pair; satiny)
303. Pair Depression Era Finger Candlesticks – Mari. (odd pair)
304. Fenton Stretch Handled Flared Lemonade Glass – Celeste Blue / Cobalt Handle (nice color)
305. **10 3/4" – 11" TALL FENTON STRETCH WIDE PANEL SWUNG VASE – CELESTE BLUE (VERY SCARCE ITEM WITH A NICE BASE COLOR)**
306. 11 1/4 – 11 1/2" Tall Fenton Wide Panel Swung Vase – Green (very scarce base color)
307. 13 1/4" Tall Fenton Bullseye and Beads Swung Vase – Mari. (scarce pattern)
308. 12" Tall Fenton Boggy Bayou Swung Vase – Amy. (light overlay)
309. Fenton Dragons Tongue Light Shade – Mari. / Moonstone (scarce item; nice)
310. **9 5/8" TALL FENTON FINE RIB STANDARD SWUNG VASE – MARI. / VASELINE OPAL. (RARE ITEM IN THIS COLOR; BUFFED OPEN BUBBLE ON BASE)**
311. 10 1/4" Tall Fenton Fine Rib Standard Swung Vase – Amber (rare base color; nice)
312. 9" Tall Fenton Fine Rib Standard Swung Vase – Powder Blue / Mari. (scarce base color and overlay)
313. **9 1/4" ALL FENTON FINE RIB STANDARD SWUNG VASE – PINK / MARI. (REALLY IS A PINK BASE COLOR; VERY UNUSUAL)**
314. 11 3/4" Tall Fenton Fine Rib Mid size Swung Vase – Lime Green – Vaseline / Mari. (scarce and attractive base color)
315. 13" Tall Fenton Fine Rib Mid size Swung Vase – Amber (scarce base color)
316. 11 1/4" Fenton Rib Mid size Swung Vase- Green (very scarce base color; really nice)
317. Fenton Stippled Rays ftd. Breakfast Creamer – Green (scarce base color for this item)
318. **4 1/4" TALL x 4 1/2" DIAM. FENTON STIPPLED RAYS STEMMED ROUND COMPOTE – GREEN (VERY RARE BASE COLOR FOR THIS ITEM)**
319. Fenton Stippled Rays ftd. Breakfast Open Sugar 2 sided Handled Whimsey – Amber (scarce item)
320. **FENTON STRETCH 2 PC. HANDLED GUEST SET – WHITE / COBALT HANDLE (RARE AND VERY DESIRABLE; GREAT COLOR AND IRID.)**
321. Fenton Stretch 2 sided Hat Shape – Celeste Blue (nice color)
322. **FENTON ROSE SPRAY STEMMED ROUND GOBLET SHAPED COMPOTE – CELESTE BLUE (SCARCE COLOR)**
323. Fenton Interior Smooth Rib Stemmed Spittoon Shaped Compote Vase – Amber (scarce color)
324. Fenton Orange Tree Stemmed Round Compote – Mari.
325. Fenton Persian Medallion Lg. Stemmed 6 Ruffled Crimped Edge Compote – Mari. (scarce item; nice)
326. Fenton Peacock at the Urn Stemmed 6 Ruffled Compote – Crystal (unusual item)
327. **8 3/4" FENTON PEACOCK AT THE URN 6 RUFFLED BOWL – WHITE (VERY SCARCE WITH REALLY NICE IRID.)**
328. 8 7/8" Fenton Peacock at the Urn 8 Ruffled Bowl – Pink Depression (not carnival, very unusual item; different!)
329. 8 1/2" Fenton Chrysanthemum I.C. Shaped Bowl – Green Depression (not carnival, scarce)
330. **FENTON FLUFFY PEACOCK HANDLED WATER PITCHER – AMY. (RARE ITEM; PERFECT WITH REALLY NICE IRID.)**
331. Fenton Fluffy Peacock Tumbler – Amy. (very scarce; an excellent example)
332. Fenton Butterfly and Berry Tumbler – Dk. Mari. (nice color)
333. Fenton Orange Tree Standard Flared Handled Mug – Moonstone (not iridized but quite unusual)
334. Fenton Orange Tree Squatty Flared Standard size Handled Mug – Pink Depression (odd item)
335. **FENTON ORANGE TREE HANDLED LOVING CUP – ELEC. BLUE (RARE AND SUPER ! (HAS A BRIGHT IRID. – REALLY NICE)**
336. Fenton Orange Tree Handled Loving Cup – Dk. Mari (scarce; has a small chip on bottom of handle)
337. Fenton Orange Tree Covered Powder Jar – Blue (scarce and very desirable; nice)
338. Fenton Orange Tree Covered Powder Jar – Mari. (scarce; nice color and irid.)
339. Fenton Orange Tree ftd. Hatpin Holder – Mari. (really nice irid.; has tiny chip on one toe)
340. **7 3/4" FENTON ORANGE TREE ROUND FLARED BOWL – MARI. / VASELINE (VERY RARE COLOR FOR THIS SHAPE AND PATTERN)**
341. 8 1/8" Fenton Orange Tree I.C. Shaped Bowl – White (scarce; has nice irid.; frosty)
342. Fenton Orange Tree Standard Flared Mug – Amber / Amberina (scarce base color; wants to change to red)
343. 5 3/4" Fenton Persian Medallion I.C. Shaped Sauce – Powder Blue / Mari. (scarce base color)

344. 7 1/4" Fenton Persian Medallion 6 Ruffled Bowl – Amy. (satiny)
345. 8 1/4" FENTON PERSIAN MEDALLION I.C. SHAPED BOWL – MARI. / VASELINE (RARE BASE COLOR WITH A LIGHT SATINY OVERLAY)
346. FENTON PERSIAN MEDALLION ROSE BOWL – DK. MARI. (SUPER, SUPER EXAMPLE; A BEAUTY)
347. Fenton Vintage Grape 2 sided Handled Bon Bon – Green (scarce; satiny)
348. Fenton Vintage Grape 2 sided Handled Bon Bon – Amy. (satiny)
349. Fenton Vintage Grape 4 sided Handled Bon Bon – Mari. (satiny)
350. FENTON PRAYER RUG 4 SIDED HANDED BON BON – LT. MARI. / CUSTARD (RARE ITEM; HAS A LIGHTER OVERLAY)
351. Fenton Pond Lily 2 sided Handled Bon Bon – White (nice example; scarce)
352. 9" Fenton Leaf Chain 6 Ruffled Bowl – White (scarce; nice irid.)
353. Fenton Stippled Rays Turned in Rose Bowl – Amy. (scarce shape)
354. Fenton Magnolia and Drape Bulbous Handled Water Pitcher – Mari. (scarce with really nice enameling)
355. FENTON DAISY CUT BELL – MARI. (RARE AND VERY DESIRABLE; PERFECT WITH NICE COLOR)
356. Fenton Plain 2 pc. Tumble Up – Mari. (nice color)
357. 7 1/2" FENTON G & C BALL FTD. DEEP ROUND BOWL – POWDER BLUE / MARI. (VERY SCARCE BASE COLOR; ATTRACTIVE)
358. 7 1/2" Fenton G & C 8 low Ruffled Bowl – Amber (nice item; scarce base color)
359. 7 5/8" Fenton Vintage Grape Flat Plate – Amy. (scarce; has a bright satiny irid.)
360. 9 1/4" FENTON DRAGON AND LOTUS FLAT PLATE – BLUE (VERY RARE AND VERY DESIRABLE; SUPER IRID. AND A REAL TOUGHIE)
361. 8 1/4" FENTON DRAGON AND LOTUS I.C. SHAPED BOWL – DK. AMBER (RARE ITEM; DARK ITEM! HAS A NON-IRIDIZED INTERIOR)
362. 10 1/2" Fenton Stag and Holly Lg. I.C. Shaped ftd. Bowl – Mari. (nice satiny finish)
363. FENTON 2 ROW OPEN EDGE 6 RUFFLED HAT – RED (VERY SCARCE; HAS A DARK SATINY FINISH)
364. Fenton 2 Row 2 sided Open Edge Hat – Blue (nice item)
365. 9 1/4" FENTON LEAF CHAIN FLAT PLATE – BLUE / ELEC. BLUE (RARE AND VERY DESIRABLE WITH BRIGHT MULTI-COLORED IRID.)
366. Fenton Holly low 6 Ruffled Hat – Amy. Opal. (rare color for this item; has an epoxied chip on the edge)
367. FENTON HOLLY 6 RUFFLED HAT – RED / AMBERINA (SCARCE AND DESIRABLE; HAS A DARK SATINY FINISH)
368. Fenton Holly 4 sided Square Hat – Amber (scarce and attractive color)
369. Fenton Holly 6 Ruffled Hat – Mari. 7 Lime Green – Vaseline (attractive with bright base color)
370. 6" FENTON SAILBOATS LOW 6 RUFFLED SAUCE – AMBERINA (ACTUALLY QUITE A NICE EXAMPLE – SORTA BRIGHT IRID.)
371. FENTON HORSEHEAD MEDALLION FTD. ROSE BOWL – BLUE (RARE AND DESIRABLE; GREAT COLOR AND DETAIL)
372. Fenton Horsehead Medallion ftd. Rose Bowl – Mari. (very scarce; really nice detail)
373. 6 – 6 1/4" Fenton Lotus and Grape ftd. Round Flared Bowl – Amy. (very scarce base color with bright irid.)
374. FENTON KITTENS SQUATTY 4 RUFFLED TOOTHPICK HOLDER – MARI. (SCARCE AND DESIRABLE WITH NICE COLOR AND SIZE)
375. FENTON KITTENS 4 RUFFLED TOOTHPICK HOLDER – MARI. (SCARCE AND DESIRABLE; NICE COLOR AND PRETTY GOOD DETAIL)
376. FENTON KITTENS 6 RUFFLED BOWL – MARI. (VERY SCARCE; NICE COLOR AND IRID.)
377. FENTON KITTENS 2 SIDED BANANA DISH – MARI. (SCARCE ITEM WITH NICE COLOR)
378. Fenton Kittens 4 sided Bowl – Mari. (scarce item with nice color)
379. 6 1/2" Fenton Stippled Rays 6 Ruffled Sauce – Crystal (unusual)
380. 5 3/4" FENTON STIPPLED RAYS ROUND FLARED SAUCE – WHITE (RARE AND DESIRABLE WITH SUPER IRID.)
381. 5 3/4" FENTON STIPPLED RAYS ROUND FLARED SAUCE – MARI. / VASELINE (VERY DESIRABLE BASE COLOR; NICE)
382. 6" Fenton Stippled Rays Round I.C. Shaped Sauce – Mari. / Lime Green Vaseline (another desirable item in this color)
383. 5 3/4" Fenton Stippled Rays Round Flared Sauce – Dk. Mari. (really nice)
384. 5 1/2" Fenton Stippled Rays Round Flared Sauce – Mari.
385. 5 1/2" FENTON STIPPLED RAYS ROUND FLARED SAUCE – EMERALD GREEN (VERY SCARCE AND ATTRACTIVE ITEM; NICE)
386. 5 1/2" Fenton Stippled Rays Round Flared Sauce – Sorta Renninger Blue (odd base color – different)
387. 6" Fenton Stippled Rays I.C. Shaped Sauce – Blue / Elec. Blue (super irid.)
388. 5 1/2" Fenton Stippled Rays Round Flared Sauce – Blue (satiny irid.)
389. 5 1/2" Fenton Stippled Rays Round Flared Sauce – Amy. (scarce base color)
390. 5 1/2" Fenton Stippled Rays Round Flared Sauce with no exterior – Aqua / Teal (odd base color)
391. 6" FENTON LITTLE FISHES FTD. 6 RUFFLED SAUCE – AQUA / MARI. (SCARCE BASE COLOR FOR THIS PATTERN)
392. 5 3/4" Fenton Little Fishes ftd. 6 Ruffled Sauce – Amy. (very scarce color; nice)
393. 5 3/4" Fenton Little Fishes ftd. 6 Ruffled Sauce – Mari. (iridized on exterior)
394. 6" Fenton Lotus and Poinsettia ftd. 6 Ruffled Sauce – Mari. (satiny)
395. 5 3/4" FENTON LOTUS AND POINSETTIA FTD. 6 RUFFLED SAUCE – AMBERINA WITH RED STREAKS (VERY UNUSUAL BASE COLOR; REALLY DIFFERENT)
396. 5 3/4" Fenton Lotus and Poinsettia ftd. 6 Ruffled Sauce – Lt. Aqua / Mari. (scarce base color with a satiny finish)
397. 6" Fenton Lotus and Poinsettia ftd. 6 Ruffled Sauce – Aqua (scarce item)
398. 6" FENTON LOTUS AND POINSETTIA FTD. 6 RUFFLED SAUCE – GREEN (VERY SCARCE WITH A BRIGHT BASE COLOR AND IRID.)
399. 5 3/4" Fenton Lotus and Poinsettia ftd. 6 Ruffled Sauce – Forest Green (odd base color; haven't seen many)
400. 5 3/4" Fenton Lotus and Poinsettia ftd. 6 Ruffled Sauce – Mari. / Vaseline (satiny; scarce and desirable)
401. 6" Fenton Lotus and Poinsettia ftd. 6 Ruffled Sauce – odd Light Limey Green (odd tint)
402. 5 1/2" Fenton Lotus and Poinsettia ftd. 6 Ruffled Sauce – Blue (nice color)
403. Pair Depression Mellon Rib Salt and Pepper Shakers with Original Plastic Tops – Mari. (nice pair)
404. Scottie Covered Powder Jar – Mari.
405. World Globe Penny Bank – Mari. (sorta scarce item; nice)
406. Pair IG Grape Salt and Pepper Shakers – Smoke (60's items that have great irid.)
407. 1979 HOACGA Loving Cup Souvenir – Red (super irid.)
408. 1978 HOACGA Handled Mug Table Favor – Red (super irid.)
409. Joe St. Clair Indian Head Toothpick Holder – Green (signed – Joe St. Clair)
410. Contemporary "Nuggets" Handled Ewer – Aqua (nice irid.)
411. Contemporary Ribbed Handled Ewer – Aqua (nice irid.)
412. Depression Era Paneled Covered Candy Jar with Cathedral lid – Lt. Mari.



Lot #91



Lot #99



Lot #245



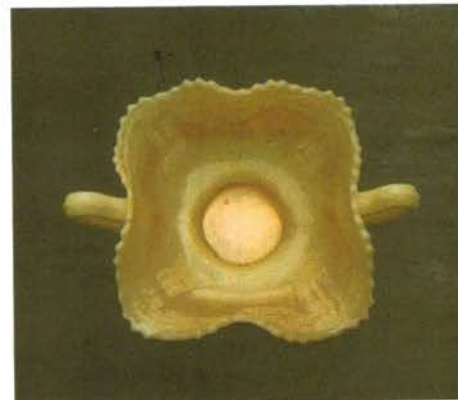
Lots 175, 160



Lot #92



Lot #95

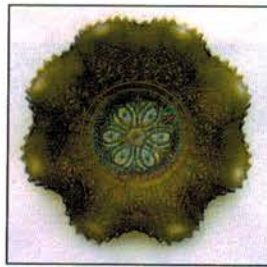


Lot #350

Keep your eyes open....
for at least TWO more great auctions
before the end of the year.
More info as soon as possible!



Lots 220, 335, 225



Lot #87



Lots 35, 43, 45



Lot #370



Lot #140



Lot #145



Lot #96



Lots 120, 260, 265



Lot #70

Burns Auction Service

P.O. Box 608
Bath, New York 14810

First Class
US Postage
PAID
Permit No. 7
Hammondsport, NY

Mid-Atlantic Carnival Glass Club Convention Auction



Lot #10

LEE MARKLEY
BOX 306
MENTONE IN 46539