

AIR CAPITAL CARNIVAL GLASS CONVENTION AUCTION

Held In Wichita, Kansas

Friday Evening, October 17, 2003 - 6:30 PM - C.D.T.

Saturday, October 18, 2003 - 9:00 AM - C.D.T.

22nd
Annual

World Class Club, A World Class Auction

and Lots of Midwestern Hospitality!!

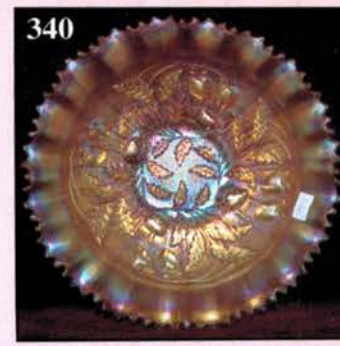
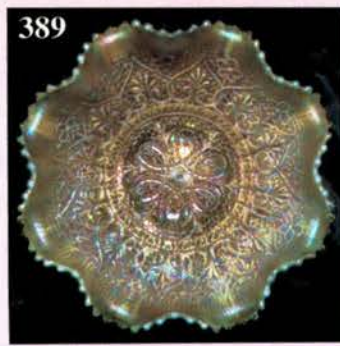
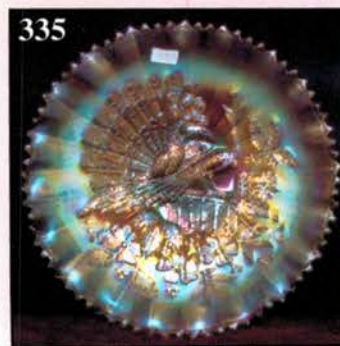
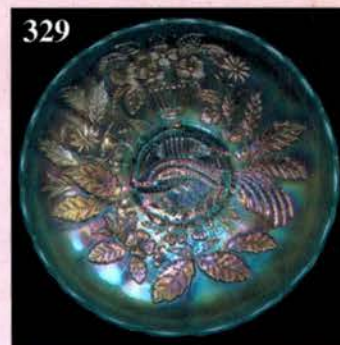
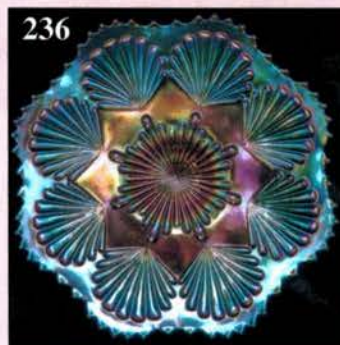
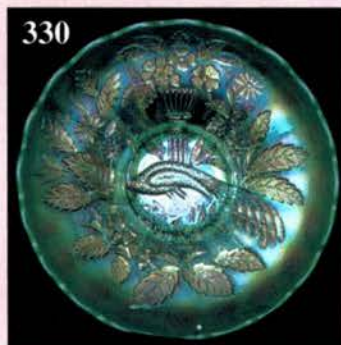
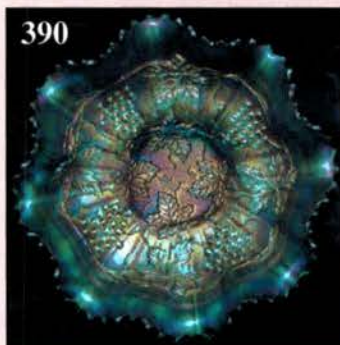
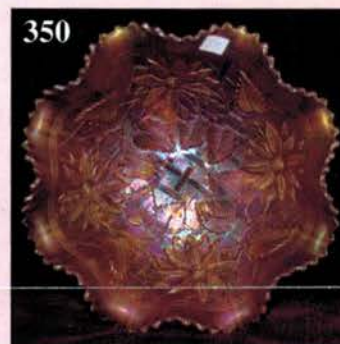
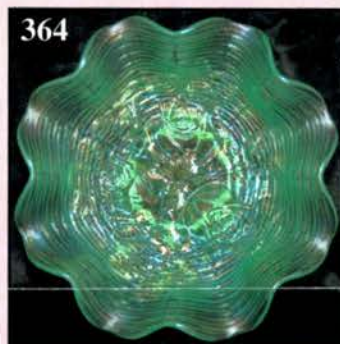
22nd
Annual

Held by the Mickey Reichel Auction L.C.

Office: 660-882-5292 • Home: 660-882-5283 • E-mail: mreichel@undata.com

Website: www.yourauctionpage.com/reichel

COLLECTION OF RUDY A. KOVACS & FRED L. WARREN, ETAL.



EVERYONE IS WELCOME

Held at Holiday Inn • 5500 West Kellogg St. • Wichita, Kansas
Reservations: 316-943-2181

Convention Information: Don Kime - 316-733-8424

Preview Friday: 5:00 p.m. to 6:30 p.m. - Saturday: 7:30 a.m. to 9:00 a.m.

WEB SITE: www.yourauctionpage.com/reichel

ABSENTEE BID POLICY:

WRITE IN BIDS: If you are unable to attend the auction, we will be happy to accept absentee bids which must be received by FRIDAY, OCTOBER 10, 2003. **DON'T DELAY.** E-Mail: mreichel@undata.com

FOR AUCTION PRICE RESULTS: Send \$3.00 and Large S.A.S.E. to 18350 Hunters Ridge Ct., Boonville, MO 65233-2971

PLEASE NOTE: There is a **\$5 handling charge for each successful bid which will be added to the selling price** for all write-in bids. This is in addition to the cost of postage, insurance and packing. Your write-in bid will be entered just as if you are present and bidding. **Successful bidders will be notified in 1 to 3 days by the auctioneer (so be sure to include your phone number).** Direct mail bids to Auctioneer Mickey Reichel, 18350 Hunters Ridge Ct., Boonville, MO 65233-2971. Terms: Cash or Check accepted with proper I.D. and Social Security Number and References. Announcements made day of the auction supercede all printed material. Not Responsible for Accidents or Sold Items.

No return on any items once they leave the Auction Center (No Exceptions).****

Call for additional information: 660-882-5292 days or 660-882-5283 evenings before 9:00 p.m.

FAX: 660-882-5292 (evening hours start FAX transmission after beep)

MAIL BIDS: Items are bid on in perfect condition with average or above iridescence OR as listed in the brochures. Bids will not be carried out when damage on an item has been found during the auction.

PEOPLE PRESENT AT AUCTION ARE RESPONSIBLE FOR FINDING ANY PINHEADS, WEAR, SPOTTINESS, MANUFACTURER'S DEFECTS OR ANY OTHER MINOR FLAWS, ETC. *****

NOTE: Read each line, as we have accentuated the type of no particular piece, all are special.

Preview Begins At 5:00 p.m.
Friday's Contemporary
First Session Starts At 6:30 p.m.

All Items Are Iridized Unless Noted!

- _____ 1. B - Carnival Niagara Falls Toothpick
- _____ 2. White Satin Grape & Cable Tumbler N
- _____ 3. GO - Hobnail Cuspidor HOACGA 1991
- _____ 4. A - Joe St. Clair Train Locomotive
- _____ 5. B Burmese - JIP Vase
- _____ 6. Horizon Blue - Bennington Cuspidor CCGA 2002
- _____ 7. Independence - Blue Fenton Bicentennial Stein
- _____ 8. Independence - Blue Fenton Eagle Bicentennial Plate
- _____ 9. Red - "Good Luck" Hat Pin, HOACGA
- _____ 10. A - Australian Club Coasters (3)
- _____ 11. Red - "Bottoms Up" Shot Glass with Tray
- _____ 12. M - Hob Star Punch Cups - 1G (2)
- _____ 13. M - Daisy & Button Urn Toothpick
- _____ 14. Amberina - Crackle Spittoon, CCGA 1993
- _____ 15. Red - Bicentennial Goblet - 1G - E.W.R. 2-24-73
- _____ 16. Plum - Opal Inverted Strawberry Compot
- _____ 17. Vas. - Open Edge Basket Weave Basket - 1 CGA

- _____ 18. G - Cuspidor "In God We Trust" ACGA, July 1977
- _____ 19. M - "Winnie The Pooh" Goblet
- _____ 20. Azure Blue - Pansy Ruffled Oval Pickle Dish
- _____ 21. G - Sunflower Pin Tray, Levay Signed 98/448
- _____ 22. M - Miniature Cup & Saucer, Signed 'GONDOLA'
- _____ 23. A - Wild Strawberry Large Covered Compote - Fenton 1960's
- _____ 24. White - Princess Lace 8" Bowl 1G
- _____ 25. M - Large 8" Swan, Signed 1G
- _____ 26. Meadow Green - 10" Vase "Grape" Sgnd. L1G
- _____ 27. Sage Green - Fenton Garden Vase for NFGS, Signed Bill Fenton
- _____ 28. M - Cape Cod Cruet, Sgnd. 1G - Levay 156/300
- _____ 29. Light Teal Blue - Hobnail Whimsey Basket - HOACGA 1992 (Reshaped Cuspidor)
- _____ 30. B - Paper Clip Basket / Paper Weight - CCGA Whimsey
- _____ 31. M - Hobnail Blown Tumbler 1G
- _____ 32. Hobnail Cased 5" Crimped Vase
- _____ 33. Ice Green - Grape Delight Footed Nut Bowl
- _____ 34. M - 10" Homestead Chop Plate - Sgnd. 1G
- _____ 35. Teal - 10" Homestead Chop Plate - Ex. Color
- _____ 36. Light Amethyst - 12" Paneled Grape, Good Luck Chop Plate - Fenton

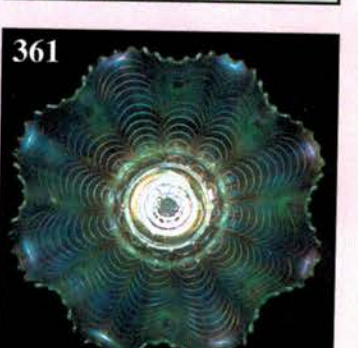
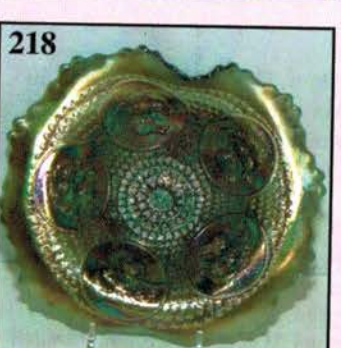
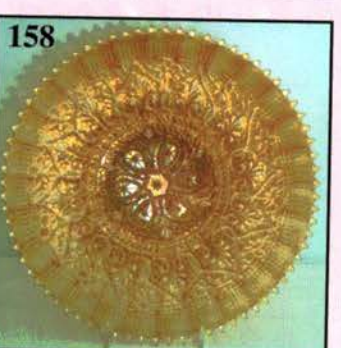
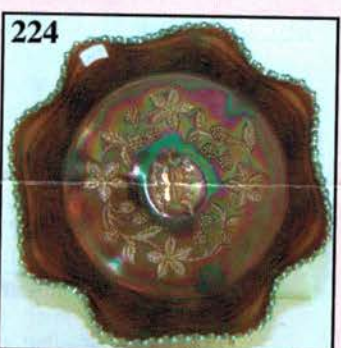
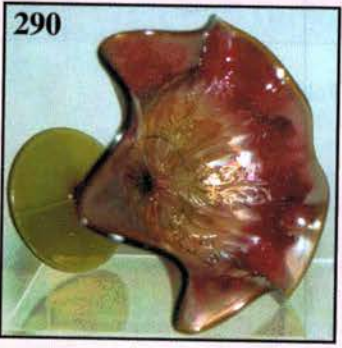
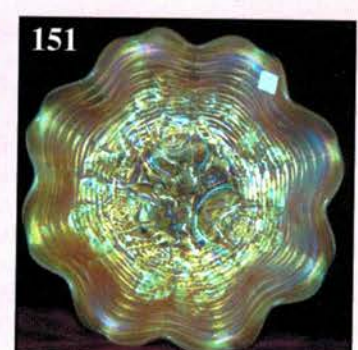
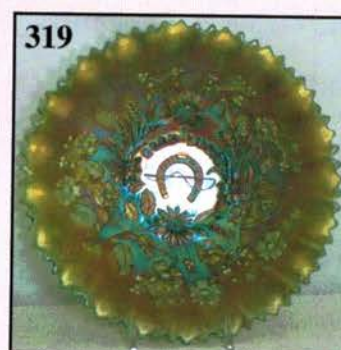
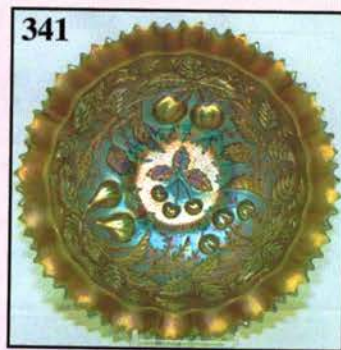
- _____ 37. Smoke - 10" Homestead Chop Plate - Signed 1G - Good Color
- _____ 38. Green Slag - Fenton Fish Paperweight - Iridized
- _____ 39. Petal Pink - "Chessie" Cat Boa
- _____ 40. M - Argonaut Toothpick
- _____ 41. B - Kittens Mini Bowl, Dorothy Taylor 1993
- _____ 42. Pink - Dragon & Lotus Basket, D. Taylor 1985
- _____ 43. B - Kittens Umbrella, D. Taylor, 1993
- _____ 44. PO - Hobnail Stemmed Rose Bowl, Fenton
- _____ 45. G - Seacoast Cuspidor, ACGA 1983
- _____ 46. Vas. Opal - Seacoast Cuspidor ACGA - 2001
- _____ 47. Iridized Milk Glass - Fenton Peacock Garden Vase - 1992
- _____ 48. Pink Opal - Flared Top Fenton Garden Vase - 1996
- _____ 49. PO - Seacoast Cuspidor ACGA - 1982
- _____ 50. Sapphire Blue - Feather & Fan Tumbler, Sgnd., Original Carnival Glass Society, 1964, Super Color
- _____ 51. Green Opal - Frolicking Bears Cuspidor, ICGA 1998
- _____ 52. Pink - Open Rose 11" Chop Plate - Sgnd. LIG
- _____ 53. B - California Quail Whimsey Plate, NCCC 1980
- _____ 54. A - Audubon 6" Cardinal
- _____ 55. B - Oval Windmill Plate, 1G
- _____ 56. Smoke - Sgnd., 1G Chrysanthemum Chop Plate
- _____ 57. A - St. Clair Cactus Tumbler
- _____ 58. Honey Amber
- _____ 59. 1993-ICGA Frolicking Bears Texas Shot Glass
- _____ 60. Red - Heirloom 10-1/2" Vase
- _____ 61. AO - Grape & Cable 10" Crimped Ruffled Bowl
- _____ 62. Red - Many Fruits, Ruffled Stemmed Rose Bowl
- _____ 63. Amethyst - Carnival "Winter In the County", No. 1, The Old Grist Mill 8" Plate - Fenton 1982
- _____ 64. Amber - Ladies 6" Salt & Pepper - Imperial
- _____ 65. Rose Magnolia Opal - Carnival Perfume with Stopper - CCGA 1997
- _____ 66. Helios Green - 6" Hobstar Covered Candy Jar, Sgnd. 1G
- _____ 67. Red - Grape & Cable Tumbler, Sgnd. J. St. Clair, Ex. Color
- _____ 68. IB - Holly Band Mug
- _____ 69. B - Cherry Chain Interior, Orange Tree Exterior 10" Ruffled Bowl, Ex. Color
- _____ 70. ICGA Amethyst "Town Pump" Bottle, St. Louis 1960
- _____ 71. Purple Stretch - Dolphin Loving Cup, Fenton 1981-SUPER!
- _____ 72. M - 5" Rabbit Covered Box, 1G
- _____ 73. M - Swan Powder Box / Lipstick Holder
- _____ 74. G - 8" Southern Belle, Satin Face & Arms Fenton
- _____ 75. B - Cherry & Thumbprint Cov. Cookie Jar, Fenton
- _____ 76. G - 6" Happy Cat Fenton FAGCA - 1st Edition, Limited
- _____ 77. Peacock "474" Pitcher - Makes A Great Vase - Ex. Color 1G
- _____ 78. A - Robin-on-Nest - St. Clair
- _____ 79. Red - 4-1/2" "JOSH" for V. Hunter
- _____ 80. Red - Fenton Large Atlantic Vase
- _____ 81. IB - Gibson Cuspidor w/Blue Threading (Older)
- _____ 82. Iridized Crystal - Mouse w/Spatter Paper Weight
- _____ 83. Aug. 1965 Womens Day - Has Article About Carnival Glass - Very Interesting
- _____ 84. Colorful Paper Weight - by?
- _____ 85. Green Opal - 5" Melanie Bell (discontinued)
- _____ 86. Jewelry A, B, C - Choice

- _____ 87. Black Satin - 6" Loganberry Vase, 1G, RARE (Not Iridized)
- _____ 88. A - BPOE Elks Paper Weight - Rare
- _____ 89. Rosalene 2-1/2" Mug
- _____ 90. M - K.C. Shot Glass
- _____ 91. Ice Green - 6" Pony
- _____ 92. Red - 5-1/2" JIP Toothpick
- _____ 93. Mother-of-Pearl - Bell Christmas Ornament
- _____ 94. Chocolate Iridized - 6 pc. Train, Discontinued Color - Boyd

Saturday, October 18
Day Two - Second Session

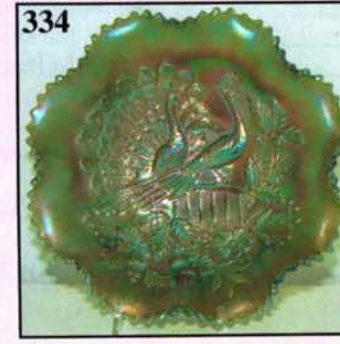
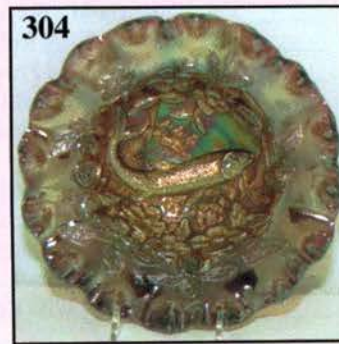
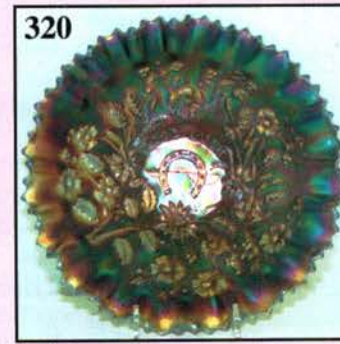
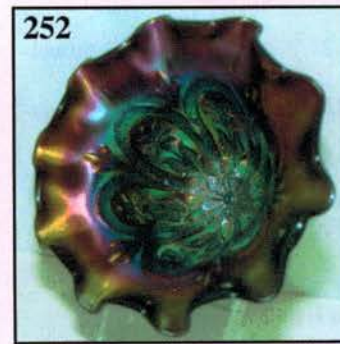
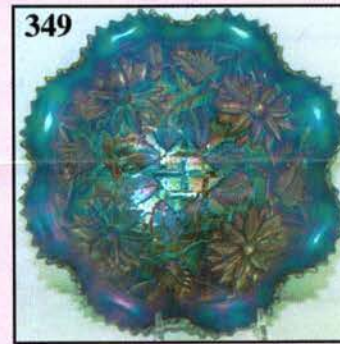
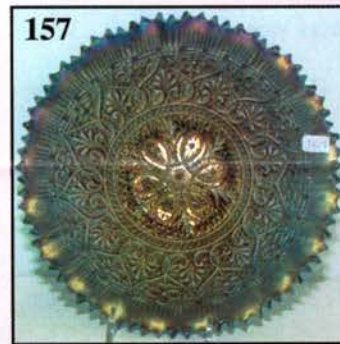
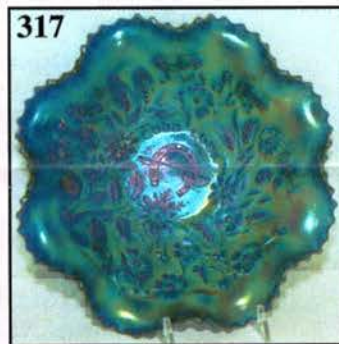
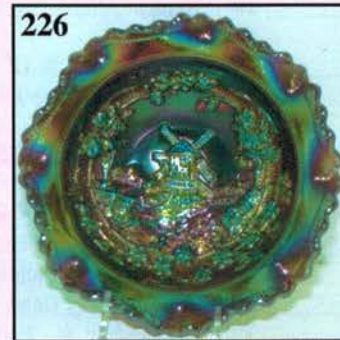
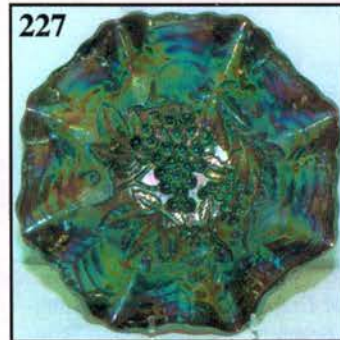
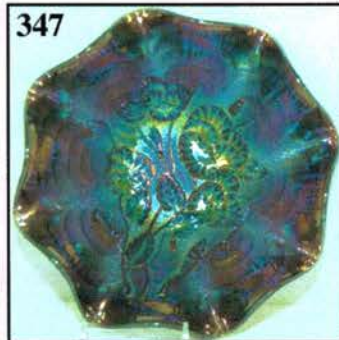
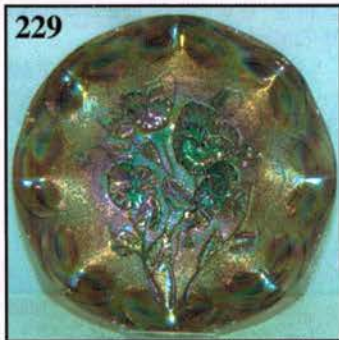
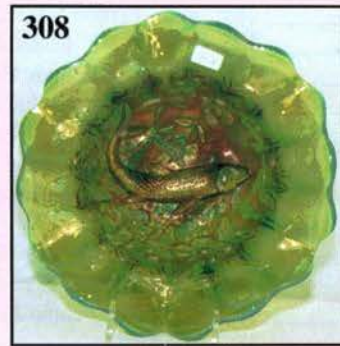
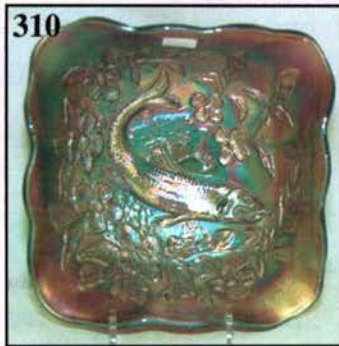
— Select Group of Tumblers, As Follows —

- _____ 95. P - N Oriental Poppy Tumbler
- _____ 96. G - N Interior Swirl Tumbler - Alaskan Effect
- _____ 97. Rare M - Australian Daisy Tumbler
- _____ 98. B - Enamel Dec. Spring Festival Tumbler - Beautiful
- _____ 99. Rich M - Rising Sun Tumbler
- _____ 100. B - Grand Thistle Tumbler - Very Scarce
- _____ 101. Rare M - Silver Band Tumbler
- _____ 102. Honey Amber - Cosmos and Cane Tumbler
- _____ 103. B - Dugan Rambler Rose Tumbler
- _____ 104. Rare M - Cambridge Inverted Strawberry Tumbler
- _____ 105. Beautiful Smoke - Imp. Soda Gold Tumbler
- _____ 106. M - Imp. Soda Gold Tumbler - Pink Highlights
- _____ 107. Soft P - Imp. Diamond Lace Tumbler - Electric
- _____ 108. M - Fenton Bouquet Tumbler - Pumpkin
- _____ 109. M - Fenton Fentonia Tumbler - Pumpkin
- _____ 110. Rich M - Fenton Orange Tree Scroll Tumbler
- _____ 111. M - Fenton Leaf Tiers Tumbler - Very Scarce
- _____ 112. P - Dugan Floral and Grape Tumbler - Incandescent!
- _____ 113. B - Dugan Lattice and Daisy Tumbler - Superb Example
- _____ 114. M - Fenton Ftd. Orange Tree Tumbler - Feet Are Clean
- _____ 115. P - N Peacock at Fountain Tumbler - Outstanding Electric
- _____ 116. Scarce G - N Grape and Gothic Arches Tumbler
- _____ 117. G - N Wishbone Tumbler - Very Scarce and Pretty
- _____ 118. A - N Greek Key Tumbler
- _____ 119. Soft P - N Acorn Burrs Tumbler
- _____ 120. Rich M - N Raspberry Tumbler
- _____ 121. G - N Oriental Poppy Tumbler - Great Irid.
- _____ 122. M - N Oriental Poppy Tumbler - Loaded with Pinks
- _____ 123. G - N Singing Birds Tumbler - Very Desirable
- _____ 124. A - Mlbg. Diamonds Tumbler - Radium Delight
- _____ 125. P - Imp. Tiger Lily Tumbler - Multi Electric
- _____ 126. G - Cambridge Double Star Tumbler
- _____ 127. Pastel M - Dugan Circle Scroll Tumbler - Pinks
- _____ 128. Rich M - Dugan Heavy Iris Tumbler - Great Pattern
- _____ 129. B - Fenton Paneled Dandelion Tumbler
- _____ 130. P - Imp. Grape Vt. Tumbler - Ribbed Interior
- _____ 131. Rare Imp. Blue - Imp. Open Rose 8-3/4", Rd., Flared Bowl
- _____ 132. Smoke - Imp. Hattie 8-3/4", Rd., Flared Bowl - Just Fantastic
- _____ 133. M - Imp. 7-3/4" Shell and Sand Bowl - Pumpkin Finish
- _____ 134. M - Imp. Diamond Ring 6-1/2" Rosebowl - Seldom Offered



- _____ 135. M - Imp. Fashion Rosebowl - Loaded with Color
 _____ 136. Lime - Imp. Open Rose Rosebowl
 _____ 137. Smoke - Imp. Open Rose Rosebowl - Beautiful Radium Silver Finish
 _____ 138. M - Fenton Spat. Ftd., 5-3/4" Two Flowers Rosebowl
 _____ 139. W - Fenton Persian Medallion Rosebowl - Top Notch
 _____ 140. Pumpkin M - Fenton Persian Medallion Rosebowl
 _____ 141. B - Fenton Persian Medallion Rosebowl - Electric Tints
 _____ 142. P - N Drapery Rosebowl - Chip On Rib, But Very Scarce
 _____ 143. PO - Dugan Raindrops Deep, 10 Ruffle Nut Bowl
 _____ 144. PO - Dugan Boarder Plants 7-3/4" Deep, 10 Ruffle Bowl
 _____ 145. PO - Dugan Soutache, 6 Ruffle, Dome Base Bowl
 _____ 146. PO - Dugan Four Flowers 6-1/2", Flat Plate - BW Ext. - Super
 _____ 147. PO - Dugan Bells and Beads 7", 6 Ruffle Bowl - Neat Pattern
 _____ 148. B - Fenton 9-1/4" Three Fruits Plate - Minor Scuffs
 _____ 149A. P - N 9" Three Fruits Plate - Smooth Ext. - Great Piece
 _____ 149. P - N 8-1/2", 8 Ruffle Embroidered Mums Bowl - Rib Ext.
 _____ 150. Ice B - N 8-1/2", 8 Ruffle Embroidered Mums Bowl - Plain Ext.
 _____ 151. M - N Rose Show Ruffled Bowl - Loaded with Pastel Irid.
 _____ 152. M - Dugan 9" Windflower Plate - Extra Nice and Scarce
 _____ 153. B - Dugan 8-1/2" Windflower Plate - Great Detail and Color
 _____ 154. W - N Nippon PCE Bowl - Rib Ext. - Pastel Paradise!!
 _____ 155. Electric G - N 9" Strawberry Plate - BW Ext.
 _____ 156. G - N Stippled Strawberry Plate - BW Ext. - Rare and Extremely Desirable
 _____ 157. B - N PCE Hearts and Flowers Bowl - Not Many Around
 _____ 158. M - N 9" Hearts and Flowers Plate - Lovely Example
 _____ 159. W - Fenton Stretch Two Sides Up Compote
 _____ 160. W - Stretch Colonial 8-1/2" Plate - Greens and Pinks
 _____ 161. B - Celeste Stretch 7-5/8" Plate - Unusual 16 Point Star In Base
 _____ 162. B - Fenton Butterfly and Berry 9-1/2" Vase - Multi Electric
 _____ 163. P - N Grape and Cable Vt. 8-3/4", 8 Ruffle Bowl - Smooth Ext. - Fantastic Color
 _____ 164. Awesome G - Fenton Holly ICS Bowl - Incredible Pinks
 _____ 165. Scarce G - N Nippon Ruffled Bowl - BW Ext. - Highly Desirable
 _____ 166. G - N Fine Rib 10" Vase - Alaskan Irid.
 _____ 167. M - N Fine Rib 9-1/4" Vase - Plain Base
 _____ 168. G - Fenton 11" Rustic Vase - Emerald Highlights
 _____ 169. B - Fenton 9-3/8" Rustic Vase
 _____ 170. W - Fenton 9" Rustic Vase - Pastel Dandy
 _____ 171. M - Fenton 10-1/4" Rustic Vase
 _____ 172. Dark Aqua - Imp. 11-1/2" Ripple Swung Vase - Scarce Beauty
 _____ 173. M - Imp. 10-3/8" Ripple Vase - Loads of Color
 _____ 174A. Rare M - 5-1/4" Diamond Heart Vase
 _____ 174. Rare M - 6-1/4" Beautiful Temple Vase
 _____ 175. Rare M - 6-1/2" Diamantes Star Vase
 _____ 176. Rare M - 6-1/4" Diamond Heart Vt. Vase
 _____ 177. Rare M - 6" C.B. Herbal Medicine Vt. Vase
 _____ 178. Rare M - Kedvesh 6" Vase
 _____ 179. Electric P - Imp. Thin Rib and Drape 5" Mini Vase - Wowser!
 _____ 180. Pumpkin M - Imp. Thin Rib and Drape 5" Mini Vase - Ditto
 _____ 181. Smoke - Imp. Morning Glory 7-1/4" Bud Vase
 _____ 182. Pumpkin M - Imp. Morning Glory 7-1/4" Bud Vase
 _____ 183. M - Imp. Morning Glory 5-1/2" Mini Morning Glory Vase - 4-1/2" Flared Opening
 _____ 184. G - N Jesters Cap 6-1/2" Vase - Really Nice!
 _____ 185. M - Fenton Boggy Bayou 5" Squatty Vase - 3-1/2" Base, 5" Opening
 _____ 186. G - Fenton Boggy Bayou 10-1/2" Vases - Choice A or B - I'd Want Them Both
 _____ 187. Electric P - Diamond 11-1/2" Spiralex Vase - Spectacular Radium Example
 _____ 188. Rare Dugan Blue - 10-3/4" Target Vase - Oh My!
 _____ 189. Awesome P - Dugan 9" Nautilus Vase - Seldom Seen
 _____ 190. BA - Dugan Circle Scroll 8-7/8" Vase - Breathtaking Electric
 _____ 191. P - Imp. Ripple 11-1/4" Electric Vase - 3-1/4" Base, 4-3/4" Top - Dripping with Color
 _____ 192. Rare W - Imp. Ripple 9-3/4" Swung Vase - Radium Pastels
 _____ 193. Teal - Imp. Ripple 7-3/4" Vase - 3" Base, 5" Top - Base Glows
 _____ 194. P - Imp. Beaded Bullseye 9" Vase - 3-3/8" Base, 5-5/8" Top - Radium Electric Winner
 _____ 195. P - Fenton Butterfly and Berry 9" Vase - Scarce Base Color
 _____ 196A. A - Fenton Knotted Beads 11-1/2" Vase - Pretty Pattern
 _____ 196. Vas. - Fenton Peacock and Grape 8-3/4", Collar Base, Ruffled Bowl - Very Scarce
 _____ 197. Vas. - Fenton Vintage (Grape) 7", Ruffled Bowl
 _____ 198. Vas. - Fenton Grape and Cable 7-3/4", 8 Ruffle, Ball Ftd. Bowl
 _____ 199. Vas. - Fenton Persian Medallion Bonbon
 _____ 200. M - Fenton 9-3/8" Orange Tree Plate w/Trunk Center - Frosty and Stretchy and Delightful
 _____ 201. G - Fenton 9" Orange Tree 8 Ruffle Bowl - Stunning Irid.
 _____ 202. Powder B - Fenton Grape and Cable 8-1/2", Ball Ftd. Ruffled Bowl - Unusual Color
 _____ 203. A - Fenton Grape and Cable 8-1/2", Spat. Ftd., Ruffled Bowl
 _____ 204. Teal - Fenton Grape and Cable 8-1/2", Ball Ftd., Ruffled Bowl - Exceptionally Scarce
 _____ 205. G - Fenton Stag and Holly Spat. Ftd., Ruffled Bowl - Tough Color
 _____ 206. G - Fenton 8" Heart and Vine CRE Bowl - Nice Shape
 _____ 207. G - Fenton 10", 3 in 1 Edge Two Flowers Bowl - Great Look
 _____ 208. G - Fenton 10-1/4", 6 Ruffle Two Flowers Bowl
 _____ 209. Rare G - Fenton 8" ICS Ribbon Tie Bowl - Real Pretty Too!
 _____ 210. M - Fenton Chrysanthemum/Windmill 9", 8 Ruffle, Collar Base Bowl
 _____ 211. A - Fenton 10", 3 in 1 Feathered Serpent Bowl - Excellent Irid.

- _____ 212. BA - Fenton Two Flowers 7", Rd., Deep, Spat. Ftd. Nut Bowl - Rare
- _____ 213. G - Fenton Two Flowers 8", Spat. Ftd., Ruffled Bowl
- _____ 214. Scarce M - Fenton Peacock and Grape 9-1/4", Collar Base Plate
- _____ 215. B - Fenton Captive Rose 9-1/4" Plate - Intriguing Pattern, Top Notch Piece
- _____ 216. B - Fenton Horse Medallion 7-1/2", 8 Ruffle, Ball Ftd. Bowl - Great Pattern
- _____ 217. M - Fenton Horse Medallion 7-3/4" Plate - Radium Beauty
- _____ 218. Rare Teal Green - Fenton Horse Medallion JIP, Ball Ftd. Bowl - Outstanding!
- _____ 219. Scarce A - Fenton Peacock At Urn 8-3/4", 8 Ruffle Bowl
- _____ 220. M - Fenton 9-3/8" Peacock At Urn Plate - Way Above Average
- _____ 221. B - Fenton 9-1/2" Peacock At Urn Plate - Multi Electric
- _____ 222. Powder B - Fenton Ribbon Tie 8-3/4", 3 in 1 Edge Bowl - Fantastic Find
- _____ 223. Rare A - Fenton Round 8" Butterfly and Berry Master Bowl - Plain Interior - Few Known
- _____ 224. Scarce A - Fenton 9-1/4", Sq. 8 Ruffle Butterfly and Berry Master Bowl - Superb Irid.
- _____ 225. Ultra Rare Tangerine Opal - Fenton 5-3/4", Ftd. Water Lily Bowl - Translucent
- _____ 226. Blazing P - Imp. Windmill 8", 8 Ruffle Bowl - Awesome Electric
- _____ 227. P - Imp. Grape 9", 8 Ruffle Bowl - Another Electric
- _____ 228. M - Imp. Grape 9", Low Ruffled Plate - As Good As They Get
- _____ 229. Lav. - Imp. Pansy 9-1/2" LOW Ruffled Plate - Radium Gem
- _____ 230. M - Dugan 8-3/4", 6 Ruffle Radium Pony Bowl
- _____ 231. M - Dugan Brooklyn Bridge 8-1/2", Scarce 10 Ruffle Bowl - Radium Pinks
- _____ 232. M - Australian 9-3/8", 16 Ruffle Swan Bowl - Outstanding Irid.
- _____ 233. M - Australian 5-1/2", 12 Ruffle Shrike Bowl
- _____ 234. Deep P - Four Flowers Vt. 9-1/2" Plate - Beautiful Base Color
- _____ 235. M - Hobstar Band Vt. 10-1/4", Flared Bowl - Very Unusual Pattern
- _____ 236. Smoke - Imp 9-1/4" Flat Shell Plate - Pastel Iridescence Galore
- _____ 237. Excellent M - Imp. Grape Wine Decanter, Stopper, 6 Wine Glasses - Very Well-Matched Set
- _____ 238. Lovely G - Imp. Grape Wine Decanter, Stopper, 6 Wine Glasses - Very Well-Matched Set
- _____ 239. Rare Smoke - 5" Estate Pattern Vase
- _____ 240. G - Cambridge Inverted Strawberry Powder Jar with Lid
- _____ 241. M - Orange Tree Powder Jar with Lid
- _____ 242. M - Dunbar Rolled Tumble Up Set - Complete
- _____ 243. B - Fenton Orange Tree Wine with Banded Top - Scarce and Lovely
- _____ 244. M Flashed - 2-3/8" Tall, 2" Square Grape and Leaves (?) Toothpick Holder - OLD
- _____ 245. M - Grape and Palisade 4-5/8" Tall Tumbler
- _____ 246. M - Beaded Panels and Grapes 5-1/4" Tall Tumbler
- _____ 247. M - Dugan Harvest Flower Tumbler - Nice One
- _____ 248. M - N Springtime Tumbler - Loaded with Pinks
- _____ 249. Rare A - Fenton Butterfly and Berry Tumbler - What A Find
- _____ 250. Elec B - N Peach Tumbler
- _____ 251. P - Dugan Leaf Rays Spade Shape Nappy - Sizzling Electric
- _____ 252. P - Dugan Flowers and Frames 5" Deep, 7-1/2" Wide, 10 Ruffle Vase Shape From Bowl - Electric
- _____ 253. M - N Star Of David and Bows 8", 8 Ruffle Bowl - Very, Very Scarce Color
- _____ 254. P - N Star Of David and Bows 8", 8 Ruffle Bowl - Extra Nice
- _____ 255. G - N Grape and Cable Hatpin Holder - Lots of Color
- _____ 256. B - Fenton Orange Tree Hatpin Holder - Great Condition and Color
- _____ 257. B - Fenton Orange Tree Loving Cup - Electric - Small Flaw On Handle
- _____ 258. W - Imp. 5" Stretch Bulb Vase - Iron Cross Mark
- _____ 259. Fantastic A - N Peacock At Fountain Cream Pitcher
- _____ 260. Rare P - Dugan Daisy Web 5", CRE, Tri-Corner Hat - Show Stopping Electric Irid.
- _____ 261. Persian Blue Opaque - Westmoreland Two-Seventy 6", Rd. Compote
- _____ 262. BO - Westmoreland Smooth Rays 6-1/2", 6 Ruffle Compote
- _____ 263. BO - Westmoreland 5-1/2", 6 Ruffle Hobstar and Fruit Bowl - Scarce & Pretty
- _____ 264. PO - Westmoreland 5-1/4" Pearly Dots Ruffled Compote
- _____ 265. Moonstone - Westmoreland 8-3/4", 6 Ruffle Carolina Dogwood Bowl
- _____ 266. PO - Dugan 6-1/2", 8 Ruffle Starfish Compote - Pumpkin Irid.
- _____ 267. Moonstone - Fenton Banded Blackberry Spray Hat - Very Scarce
- _____ 268. Scarce B - N Drapery Rosebowl - Lots of Color
- _____ 269. Beautiful P - N Leaf Beads Rosebowl - Smooth Interior
- _____ 270. Deep P - N Daisy and Plume Ftd. Rosebowl - Rayed Interior - Top Notch Piece
- _____ 271. G - N Fine Cut and Roses Rosebowl - Plain Int. - Scarce & Nice
- _____ 272. P - N Fine Cut and Roses Rosebowl - Plain Int. - Lots of Irid.
- _____ 273. Opaline Custard - N Fine Cut and Roses Rosebowl - Plain Int. - Non-Iridized, Nutmeg Finish
- _____ 274. Pastel Ice B - N Fine Cut and Roses Rosebowl - Fancy Int. - Foot Chipped
- _____ 275. Dark Ice B - N Fine Cut and Roses Rosebowl - Fancy Int.
- _____ 276. W - N Fine Cut and Roses Rosebowl - Fancy Int.
- _____ 277. M - Imp. Windmill Tumbler - Extra Nice
- _____ 278. Scarce G - N Singing Birds Mug - Alaskan Effect
- _____ 279. Pumpkin M - N Singing Birds Mug
- _____ 280. B - Fenton 6", JIP 2-Row O.E. Basket - Pinks and Blues
- _____ 281. BA - Fenton 5-1/2", 6 Ruffle 2-Row O.E. Basket - Seldom Encountered
- _____ 282. Sapphire - Fenton 5-1/2", 6 Ruffle 2-Row O.E. Basket
- _____ 283. Yellow Vas. - Fenton 6", 2 Sides Up 2-Row O.E. Basket
- _____ 284. M - Fenton 6", 2 Sides Up 2-Row O.E. Basket - John Brand Furniture Advertising



- _____ 285. Red - Fenton 5-1/2", 6 Ruffle 2-Row O.E. Basket
 _____ 286. Red - 6-1/2" Rolled Rim Low Bowl
 _____ 287. Red - 3-1/2" Plain Pattern Rosebowl
 _____ 288. Red Amberina - Imp. Floral Optic 9", Ftd. Bowl
 _____ 289. Red Amberina - Fenton 8", Spat. Ftd. Peacock and Grape Ruffled Bowl - Great!
 _____ 290. Red - Fenton Holly Ruffled Compote - Always In Demand
 _____ 291. M - Jeanette Glass Intaglio Etched Grape 7", 6 Sided Base Candlesticks - Pair
 _____ 292. Sapphire - Fenton 11-1/4" Fine Rib Vase - Scarce Color and Size
 _____ 293. Rare Sapphire - N 10-1/2" Tree Trunk Vase - 4-3/4" Opening
 _____ 294. Scarce Ice B - N 11" Tree Trunk Vase
 _____ 295. Lav. Base - N 10-1/4" Diamond Point Vase - Fantastic Example
 _____ 296. Ice G - N 10-1/2" Thin Rib Vase - Scarce Shape and Color
 _____ 297. Beautiful Ice G - N 9" Drapery Vase
 _____ 298. Ultra Rare Lime Green Opal - N 7-1/4" Four Pillars Vase - Butterscotch Overlay and It Glows!
 _____ 299. Pastel AO - N Daisy and Drape Vase - Flared Opening
 _____ 300. Outstanding W - Palm Beach 6" Whimsied Vase From Spooner - Pastels Galore
 _____ 301. P - Dugan 4", CRE Twigs Vase - 3" Opening - Very, Very Desirable
 _____ 301A. Scarce Smoke - Imp. Grape Water Pitcher - Super Radium Example
 _____ 301B. Scarce Smoke - Imp. Grape Tumbler - Great Example
 _____ 302. A - Mlbg. Peacock and Urn Low 6" Plate/Bowl? - Your Call
 _____ 303. G - Mlbg. Peacock and Urn 10-1/2", 3 in 1 Bowl - Killer Radium Color
 _____ 304. A - Mlbg. Big Fish 8", 3 in 1 Edge Bowl - Radium Rarity
 _____ 305. A - Mlbg. Big Fish 8-1/2", 3 in 1 Edge Bowl - Unusual Satin Finish
 _____ 306. M - Mlbg. Big Fish 8-1/2", 3 in 1 Edge Bowl - Unusual Satin Finish
 _____ 307. A - Mlbg. Big Fish 8-1/4", ICS Bowl - Unusual Satin Finish
 _____ 308. G - Mlbg. Big Fish 8", Ruffled Bowl - Radium and Nice
 _____ 309. G - Mlbg. Trout and Fly ICS Bowl - Radium And Satin
 _____ 310. A - Mlbg. Trout and Fly 8-3/4" Square or Diamond Shape Bowl - Satin
 _____ 311. BA - Coolie Hat Hatpin
 _____ 312. BA - Veiling with Beads Hatpin
 _____ 313. Lav. - Rooster Hatpin
 _____ 314. BA - Big Butterfly Hatpin
 _____ 315. BA - Top O' The Morning Hatpin
 _____ 316. BA - Flying Bat Hatpin
 _____ 317. Eye Popping Elec. B - N Stippled, Ruffled Good Luck Bowl - Rib Ext.
 _____ 318. Rare Sapphire - N Ruffled Good Luck Bowl - Exquisite Example
 _____ 319. Beautiful G - N PCE Good Luck Bowl - BW Ext. - A Scarce Shape
 _____ 320. Beautiful B - N PCE Good Luck Bowl - Rib Ext. - Multi Elec.
 _____ 321. G - N 8 Ruffle Good Luck Bowl - BW Ext. - Way Above Average
 _____ 322. B - N 8 Ruffle Good Luck Bowl - Rib Ext. - Another Dandy
 _____ 323. P - N 8 Ruffle Good Luck Bowl - BW Ext. - Great Irid.
 _____ 324. M - N 8 Ruffle Good Luck Bowl - Rib Ext. - Pink Center
 _____ 325. M - N Strawberry 9" Plate - Nice One
 _____ 326. Fantastic B - N Fully Stippled 9-1/2" Peacock at Urn ICS Bowl - Astounding Color
 _____ 327. B - N Fully Stippled 5-3/4" Peacock At Urn ICS Bowl - Little Brother
 _____ 328. M - N 10-1/2" Fully Stippled Peacock At Urn ICS Bowl or Chop Plate - 2" Off Table
 _____ 329. Dark Ice B - N 9-3/4" ICS Peacock At Urn Bowl - Real Beauty
 _____ 330. Scarce ice G - N 9-3/4" ICS Peacock At Urn Bowl - Loads of Blues
 _____ 331. B - N Peacocks 9" Stippled Plate - Rib Ext. - Delightful & Desirable
 _____ 332. A - N Peacocks 9-1/4" Plate - Rib Ext. - Just Dandy
 _____ 333. M - N Peacocks 9" Plate - Rib Ext.
 _____ 334. Rare G - N Peacocks 9" Ruffled Bowl - Rib Ext. - Head and Shoulders Above the Rest
 _____ 335. Pastel M - N Peacocks PCE Bowl - Rib Ext. - Fabulous Example
 _____ 336. Ice B - N Peacocks PCE Bowl - Rib Ext. - Very Scarce Color
 _____ 337. Ice Blue Opal - N Ruffled Peacocks Bowl - Rib Ext. - 1" of Opal - WOW!
 _____ 338. P - N Strawberry 8-3/4", 8 Ruffle Bowl - Smooth Ext. - Super
 _____ 339. P - N Strawberry 8-3/4", 8 Ruffle Bowl - BW Ext. - Multi-Electric
 _____ 340. Pastel M - N Stippled, PCE Strawberry Bowl - Rib Ext. - Pinks, Blues, Violets
 _____ 341. Rare G - N PCE, Stippled Three Fruits Bowl - Rib Ext.
 _____ 342. Beautiful Ice B - N Poppy Pickle Dish
 _____ 343. P - N Poppy Pickle Dish - Fantastic Irid.
 _____ 344. Elec. B - N Poppy Pickle Dish
 _____ 345. M - N Poppy Pickle Dish
 _____ 346. P - Imp. Pansy Oval Pickle Dish - Electric
 _____ 347. Breathtaking P - Imp. Pansy 9" Ruffled Bowl - Show Stopper!
 _____ 348. M - Imp. Pansy 9" Ruffled Bowl - Radium Pumpkin
 _____ 348A. Soft P - Imp. Heavy Grape 8-1/4" Plate - Ripe for the Picking
 _____ 349. B - N Poinsettia and Lattice Ruffled Bowl - Mega Electric
 _____ 350. Pumpkin M - N Poinsettia and Lattice Ruffled Bowl
 _____ 351. Rare Ice B - N Ruffled Poppy Show Bowl
 _____ 352. M - N Ruffled Poppy Show Bowl - Fantastic Irid.
 _____ 353. M - N Hearts and Flowers Compote
 _____ 354. Clambroth - N Sunflower 9", Spat. Ftd., Ruffled Bowl - Very Different
 _____ 355. Scarce B - N Sunflower 9", Spat. Ftd., Ruffled Bowl - Always In Demand
 _____ 356. BA - Fenton Vintage (Grape) Fernery - Rare Color
 _____ 357. Emerald Green - Four Flowers Vt. 9-1/2" Plate
 _____ 358. Rare B - N Wild Rose Nut Bowl - Got One?

- _____ 359. M - Fenton Concord 3 in 1 Bowl - Scarce Shape
- _____ 360. B - Fenton Ball Ftd., 9" Stag and Holly Fruit Bowl
- _____ 361. Fabulous Ice G - N 8-3/4", Ruffled Nippon Bowl - Spectacular Irid.
- _____ 362. Stretch Ice G - Dugan 8-1/2", 10 Ruffle Pony Bowl - Great, Glowing Example
- _____ 363. Very Rare Aqua - Dugan 6 Ruffle Pony Bowl - Few Known
- _____ 364. Exquisite Ice G - N Ruffled Rose Show Bowl - It's Got The Blues!
- _____ 365. Renniger B - N 9", Thin Base Rose Show Vt. Plate

- _____ 366. M - N Rose Show Vt. Ruffled Bowl - Scarce and Nice
- _____ 367. Ice G - Fenton 7", 6 Ruffle Leaf Chain Bowl
- _____ 368. Clambroth - Fenton Orange Tree 8-1/4", ICS Bowl - Trunk Center
- _____ 369. PO - Dugan Persian Garden 11" Ruffled Fruit Bowl - Lots of Opal
- _____ 370. M - Lancaster Enamel Decorated Candy Jar w/Cover
- _____ 371. M - N Paneled Holly Bonbon
- _____ 372. G - N Paneled Holly Bonbon
- _____ 373. MMG - Westmoreland 8", 6 Ruffle Corinth Bowl - Unusual Find
- _____ 374. Aqua - Fenton 7" ICS Acorn Bowl - Neat Base Color
- _____ 375. M - Kokomo 4-1/2" Ftd. Rosebowl
- _____ 376. M - Imp. Diamond and Sunburst Flared Wine
- _____ 377. G - N Memphis Punch Cup - 6 x \$
- _____ 378. M - Imp. Lustre Rose Tumbler - Nice
- _____ 379. Teal - Imp. Fieldflower Tumbler - Scarce
- _____ 380. M - Imp. Octagon Tumbler - Monogrammed!

- _____ 381. M - Dugan Vineyard Tumbler - Dark and Nice
- _____ 382. B - Dugan Beaded Stork In Rushes Tumbler
- _____ 383. M - Fenton Waterlily and Cattails Tumbler - Pretty
- _____ 384. M - Fenton Butterfly and Fern Tumbler - Richly Iridized
- _____ 385. P - N Grape and Cable Tumbler - Beautiful Irid.
- _____ 386. M - Miniature Nut Set - 7 pc.
- _____ 387. Celeste B - Imp. Chesterfield Lg. Stretch Compote - 7-3/4" Tall, 7-1/2" Opening
- _____ 388. Sapphire B - Stretch Diamonds Spindle Candlesticks - Pair - Very Scarce
- _____ 389. Aqua with Opal Tips - N 8-3/4" Hearts and Flowers Ruffled Bowl - Super Item
- _____ 390. Rare Sapphire - N Grape and Cable Stippled Vt. 8-1/2", 8 Ruffle Bowl
- _____ 391. M - Fenton Butterfly Bonbon
- _____ 392. B - Fenton Persian Medallion Bonbon
- _____ 393. M - Dugan 5" Golden Grape Rosebowl
- _____ 394. Lime - Imp. Heavy Grape 7", 8 Ruffle Bowl
- _____ 395. Smoke - Imp. Smooth Panels 8" Oval Pickle Dish
- _____ 396. M - Dugan Maple Leaf Stemmed Sherbet
- _____ 397. M - Cathedral Stemmed Open Sugar
- _____ 398. Cute M - Split Diamond 3-1/4" Pitcher
- _____ 399. PO - Dugan Six Petals 7", CRE, 6 Ruffle Bowl
- _____ 400. Electric Blue - Fenton 10-1/2" Milady Ruffled Vase - Contemporary

SPECIAL NOTE:

NO SUNDAY CALLS, PLEASE!

Winning Absentee Bidders will be contacted Monday through Wednesday of the week following the Auction!

Thank You!

JOIN AIR CAPITAL CARNIVAL CLUB ONLY \$15.00 PER YEAR

If you are interested in becoming a member, please fill out the form below and mail your payment to:

**Randy Thach
4500 N. Ridge Road
Wichita, Kansas 67205**

NAME _____

ADDRESS _____

TELEPHONE _____

E-MAIL ADDRESS _____

_____ Check if new member.
Enclosed is my check for \$15.00

👉 AUCTION CALENDAR OF EVENTS

November 15, 2003

**CARNIVAL GLASS AUCTION
FROM MARYLAND, THE SHAW'S
at Boonville, Mo. Auction Gallery**

January 10, 2004

**13TH NEW YEARS
CARNIVAL GLASS EXTRAVAGANZA
at Boonville, Mo. Auction Gallery**

Carnival Glass

**FEBRUARY, 2004 - BOONVILLE, MO
MARCH, 2004 - BOONVILLE, MO**

April 18, 2004

**WORLD WIDE WEB
CARNIVAL GLASS CONVENTION
St. Louis, Missouri**

NEED QUALITY CARNIVAL GLASS & ANTIQUES

*"We don't want all the Business,
Just Yours."*

WE DO AUCTIONS RIGHT!!

MICKEY REICHEL
ANTIQUÉ & AUCTION, L.C.
18350 HUNTERS RIDGE CT.
BOONVILLE, MO 65233-2971

PRESORTED
FIRST CLASS MAIL
US POSTAGE PAID
SEDALIA, MO
PERMIT 217

RETURN SERVICE REQUESTED

FIRST CLASS MAIL
SPECIAL INVITATION TO:

260



8*19*****MIXED AADC 650

LEE MARKLEY

PO BOX 306

MENTONE, IN 46539-0306

