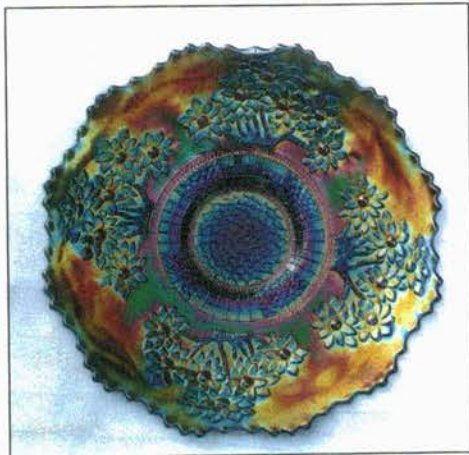




Lot #160



Lot #166



Lot #165



Lot #70

BURNS

AUCTION SERVICE

2003 N.C.C.C. Convention Auction

9:30 am, Saturday, Sept. 27, 2003

Preview: 8 - 9:30 am & Fri. evening

at the

Red Lion

(formerly the Holiday Inn)

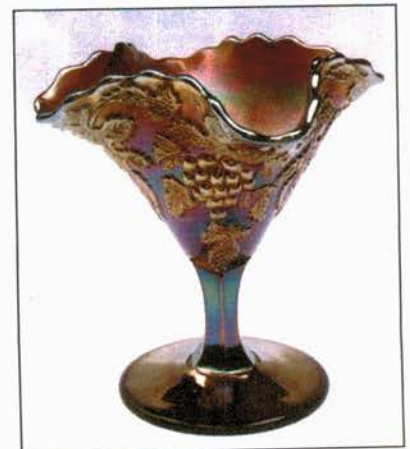
1612 Sisk Rd., Modesto, CA 95350

(Briggsmore Ave. exit off Hwy. 99)

(209) 521-1612



Lot #145



Lot #150



Lot #106



Lot #48



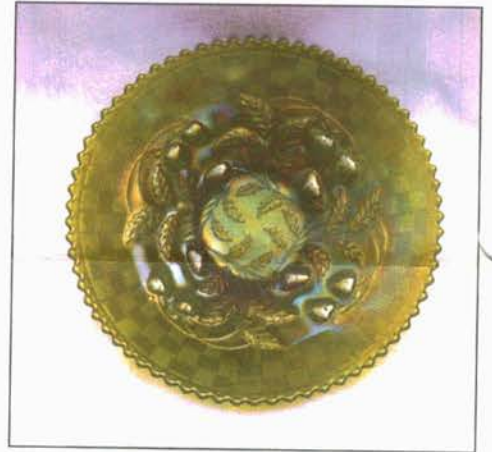
Lot #45



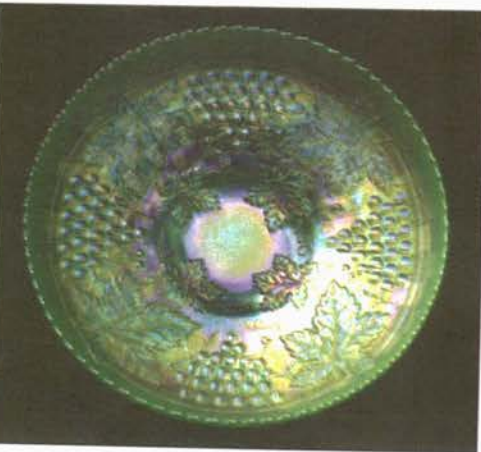
Lot #91



Lot #95



Lot #112



Lot #71



Lot #110



Lot #65

Well, it's been a while but - here we go! We're pleased to be able to travel to the West Coast once again to present a great selection of glass to the participants of the 2003 N.C.C.C. Convention. The glass is from numerous consignors from the East Coast, making for one of the better selections we've brought to the 49er State and I'm sure there'll be something for everyone. It'll be nice to see old friends again and hopefully make some new ones. See ya there!

The Red Lion (formerly the Holiday Inn) will host the event. If I remember correctly, the motel is located just off the Briggsmore exit of Highway 99 on the north side of Modesto.

I'm sure there will be plenty of activities going on as well as glass for sale in the rooms, and on top of it all: the Remmen's will be the guest speakers at the banquet. It should be a great time - one that I'm really looking forward to.

For further information call or write any of us at Burns Auction (my cell phone actually works now!) or for Convention info contact June McCarter at (209) 521-1612.

Mail bids due by Wednesday, Sept. 24, 2003.

Burns Auction Service

Tom Burns
P.O. Box 608
Bath, New York 14810
(607) 776-7942 Cell: 731-9302

Bill Richards
44 Water Street, Poland OH 44514
(330) 757-2001
FAX (330) 757-4917

Bill Richards III
2253 Country Lane
Poland, OH 44514
(330) 755-2620

Mail Bids honored under the following conditions:

- No deposit required. Bidders will take full responsibility to honor any and all bids we execute for them. Payment in full plus postage and handling required after notification and before we ship any item to them.
- Items are bid on in perfect condition with average or above average iridescence OR as listed in the brochures. Bids will not be carried out when damage on an item has been found during the auction. **PEOPLE PRESENT AT THE AUCTION ARE RESPONSIBLE FOR FINDING ANY PINHEADS, WEAR, SPOTTINESS, MANUFACTURER'S DEFECTS OR ANY OTHER MINOR FLAWS, ETC.**
- Successful bidders will be notified by collect call from the auctioneer **SO BE SURE TO INCLUDE PHONE NUMBER.**
- Phone inquiries about the glass or any other questions are welcome.
- If you have some other person at the auction bidding for you, they must pay for the item before taking it.
- Any terms or conditions given the day of the auction will supersede any previously published information.
- Mail, e-mail, fax and phone bids are due by Wednesday, September 24, 2003

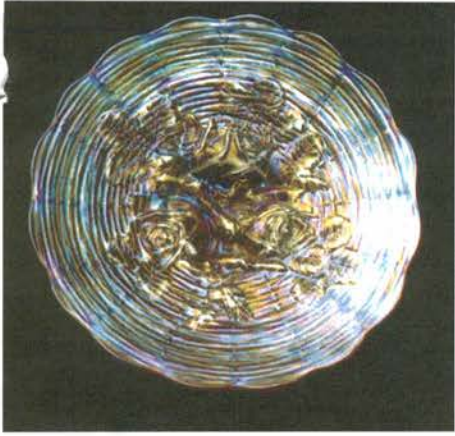
Visit our website at: <http://www.woodsland.com/burnsauction/>

- | | |
|---|--|
| <p>_____ 1. Westmoreland Miniature Wide Panel Handled Basket Salt Dip - Lt. Mari. (scarce)</p> <p>_____ 2. Czech Enameled Floral ftd. Tumbler - Cranb. / Mari. Flash (really unusual; scarce)</p> <p>_____ 3. Pair Czech Roll Salt and Pepper Shaker with Original Tops - Lt. Mari. (scarce pair with lids)</p> <p>_____ 4. Dugan Venetian Line Tri-Cornered, Pinched in Rose Bowl - Cobalt with White Frit (unusual item with nice color and frit)</p> <p>_____ 5. IMPERIAL PANSY 8 RUFFLED BOWL - PURP. (SCARCE AND A REAL BEAUTY; SUPER IRID.)</p> <p>_____ 6. Imperial Windmill Deep 8 Ruffled Bowl - Purp. (nice color with great irid.; one small spot where irid. didn't take)</p> <p>_____ 7. 5" Imperial Windmill 8 Ruffled Sauce - Pastel Mari. (absolutely super irid.)</p> <p>_____ 8. 10" Imperial Grape Lg. Round Master Berry Bowl - Amber (actually quite a rare color for this item)</p> <p>_____ 9. Pr. 8 - 9" Tall Imperial Paneled Octagonal Based Candlesticks - Smoke / Clear (very scarce pair with a nice smoky lustre)</p> <p>_____ 10. IMPERIAL MINIATURE MORNING GLORY SWUNG VASE - SMOKE (VERY SCARCE WITH GREAT IRID.)</p> <p>_____ 10A. 7 1/4 - 7 1/2" TALL IMPERIAL MORNING GLORY MINIATURE SWUNG VASE - PUR. (ABSOLUTELY BEAUTIFUL BRIGHT IRID.)</p> <p>_____ 11. Imperial Miniature Morning Glory Swung Vase - Pastel Mari. (super irid.)</p> <p>_____ 12. Imperial Miniature Morning Glory Swung Vase - Mari. (nice color and irid.)</p> <p>_____ 12A. 6" Tall Imperial Bullseye & Beads Squatty Flared Vase - Dk. Mari. (rare size; nice irid. but has a hairline)</p> <p>_____ 13. Imperial Cupped in Cylinder Vase with Manuf. Ground Base and Iron Cross Signature - White (scarce and desirable item)</p> <p>_____ 14. Imperial Ripple Mid size Swung Vase - Purp. (great color with bright irid.; really nice)</p> <p>_____ 15. Imperial Little Barrel Novelty with Original Cork Stopper - Green (very scarce item)</p> <p>_____ 16. Imperial Heavy Grape Handled Punch Cup - Purp. (actually quite a rare item; has roughness on top lip)</p> <p>_____ 17. Imperial Brocaided Chipped Ice 2 pc. Chip and Dip - White / Gold (attractive item)</p> <p>_____ 18. 9 1/2" Fenton Stretch Swung Bud Vase - Celeste Blue (nice color)</p> <p>_____ 19. 8" Fenton Stretch Flared Flower Pot Shaped Vase - Celeste Blue (nice size and nice color)</p> | <p>_____ 20. N'WOOD STRETCH RIBBED PANELED INTERIOR 3 FTD. TURNED IN ROSE BOWL - CELESTE BLUE (ANOTHER ITEM THAT'S UNUSUAL AND TOUGH TO FIND)</p> <p>_____ 20A. 9" N'WOOD STRETCH WIDE RIB TWIST VASE - CELESTE BLUE (RARE AND DESIRABLE; GREAT COLOR AND IRID.)</p> <p>_____ 20B. N'WOOD STRETCH 2 PC. LUNCHEON SET WITH 8 1/2" PLATE AND A 3" X 2" HANDLELESS CUP - CELESTE BLUE (VERY RARE OUTFIT; HAS GREAT COLOR AND GOLD TRIM)</p> <p>_____ 21. N'wood (?) Stretch Paneled Covered Candy Dish with Cathedral Shaped Lid - Vaseline (super color with nice irid.)</p> <p>_____ 21A. Fenton (or N'wood) Stretch Wide Panel Covered Cookie Jar - White (very scarce and attractive color)</p> <p>_____ 21B. N'wood Stretch J.I.P. Bowl with Tree of Life Base - White (very scarce item in this color; nice)</p> <p>_____ 22. Pair 12" Tall Fenton Diamond Point Columns Swung Vases - Lime Green / Mari. (nice base color and well matched - selling so much each for pair)</p> <p>_____ 23. Dugan Ribbed Paneled J.I.P. Vase - Purp. (scarce and desirable with nice interior irid.)</p> <p>_____ 23A. 5 1/2" Tall Dugan Ribbed Paneled 6 Ruffled Vase - Pur. (scarce with a dark satiny irid.)</p> <p>_____ 23B. 9 3/4" Tall N Four Pillar Ribbed Swung Vase - Aqua Opal. (desirable with pastel highlights and good feet)</p> <p>_____ 24. N Four Pillar Ribbed Swung Vase - Aqua Opal. (scarce and desirable; chip on one toe)</p> <p>_____ 25. N PEACOCK AT THE FOUNTAIN TUMBLER - ICE BLUE (RARE AND DESIRABLE; NICE PASTEL COLOR AND IRID.)</p> <p>_____ 26. N STIPPLED G & C TUMBLER - PURP. (RARE AND VERY DESIRABLE ITEM; TOUGH TO FIND)</p> <p>_____ 27. N Singing Birds Handled Mug - Purp. (nice color and irid.)</p> <p>_____ 28. Fenton Enameled Wildflower Tumbler - Mari. (rare floral enameled pattern; pretty good decor.)</p> <p>_____ 29. 9 1/2" Fenton Holly Plate - Mari. (very scarce and desirable; rally nice example)</p> <p>_____ 30. 350 N PEACOCK AT THE URN LG. ICE CREAM BOWL - DK. MARI. (VERY SCARCE AND VERY DESIRABLE WITH A GREAT DARK (SORTA PUMPKIN) FINISH)</p> <p>_____ 31. 9 1/2 - 3/4" M'burg Rosiland Lg. 6 Ruffled Bowl - Amy. (very scarce and tough to find; satiny finish)</p> <p>_____ 32. Dugan Pony 6 Ruffled Bowl - Mari. (nice color and detail)</p> <p>_____ 33. Imperial Swirl Paneled J.I.P. Vase - Dk. Mari. (super irid.)</p> <p>_____ 34. N Raspberry Tumbler - Purp. (really nice example)</p> |
|---|--|

- 1300 35. N'WOOD STRETCH TURNED IN ROSE BOWL SHAPED COMPOTE WITH TREE OF LIFE BASE - MARI. / CUSTARD (ONLY EXAMPLE IN THIS COLOR I'VE EVER HEARD OF; A SUPER STRETCH RARITY)
- 575 36. PAIR 8 1/2" TALL FENTON THIN RIB CANDLESTICKS - CELESTE BLUE (RARE PAIR; GREAT COLOR AND FINISH)
- 36A. 5 3/4" TALL FENTON STRETCH CORNUCOPIA CANDLESTICK - ICE BLUE (A VERY SCARCE ITEM IF YA NEED ONE; GREAT BASE COLOR AND PASTEL IRID.)
37. Pastel Swan Master Salt Dip - Celeste Blue (nice color)
38. Fenton Stretch "Littlest Punch Bowl" Master Salt - Ice Green (nice pastel finish)
39. 9 1/2" FENTON LOTUS AND POINSETTIA LG. I.C. SHAPED FTD. BOWL - GREEN (A RARE COLOR FOR THIS PATTERN; SATINY)
40. FOSTORIA BROCAIDED PALMS FTD. OBLONG COVERED BOX - ICE GREEN (RARE ITEM ESP. WITH LID; VERY ATTRACTIVE)
- 420 41. FOSTORIA BROCAIDED PALMS FTD. OBLONG FLOWER BOX WITH GLASS FROG LID - ICE GREEN (ANOTHER RARE FOSTORIA ITEM; ESP. WITH LID)
42. FOSTORIA BROCAIDED ACORNS COVERED TRI-DIVIDED ROUND BOX - ICE BLUE (HERE'S ANOTHER VERY SCARCE COVERED ITEM)
43. Pair Fostoria Brocaided Palms Squatty 3 ftd. Candlesticks - Pink (very scarce pair)
44. 8 1/2 - 3/4" Fenton Persian Medallion Bowl with 3 in 1 Edge - Amy. (tough bowl in a tough size and color)
- 450 45. N PETALS STEMMED 6 RUFFLED COMPOTE WITH PLAIN EXT. - LIME ICE GREEN (VERY RARE COLOR FOR THIS ITEM; HOW MANY HAVE YOU SEEN?)
- 500 46. N THREE FRUITS MEDALLION STIPPLED 8 RUFFLED FTD. BOWL WITH MEANDER EXT. - ELEC. BLUE (SUPER IRID. ON THIS VERY DESIRABLE ITEM)
- 235 47. 7 1/2" TALL N DIAMOND POINT SQUATTY FLARED VASE - BLUE (RARE COLOR; RARE SIZE; SORTA SATINY)
- 530 47A. 7" TALL X 5" FLARE N THIN RIB SQUATTY STANDARD SIZE VASE - ICE BLUE (RARE AND VERY DESIRABLE ITEM IN THIS SIZE; SUPER IRID.)
48. N ROUND HANDLED BUSHEL BASKET - ELEC. BLUE (GREAT COLOR AND SUPER IRID.)
49. 7 1/2 - 8" Imperial File Exterior Deep 6 Ruffled Bowl - Purp. (unusual item with super irid.)
50. PAIR 8 - 9" TALL DIAMOND BELL SHAPED STRETCH CANDLESTICKS - BLACK AMY. (RARE PAIR WITH A GREAT ART GLASS LOOK)
51. FENTON 2 ROW OPEN EDGE LG. SIZE 6 RUFFLED HAT - ICE GREEN (RARE AND VERY DESIRABLE PASTEL; NICE)
52. 6 1/2" Dugan Four Flowers Flat Plate - P. Opal. (scarce with great opal.)
53. Dugan Pony 6 Ruffled Bowl - Amy. (very scarce with a nice satiny look)
54. Dugan Pony 10 Ruffled Bowl - Mari. (satiny)
55. 9 1/2" DUGAN VINTAGE GRAPE DOMED FLAT PLATE - AMY. (RARE AND VERY TOUGH TO FIND; FLAT WITH A BRIGHT SATINY IRID.)
56. 6" DUGAN CHERRIES TIGHT CRIMPED EDGE PLATE WITH JEWELLED HEART EXT. - PURP. (RARE WITH SUPER COLOR AND IRID.)
- 395 56A. 6" DUGAN PETAL & FAN CRIMPED EDGE PLATE WITH J. H. EXT. - PUR. (VERY SCARCE ITEM WITH GREAT COLOR AND IRID.)
- 400 56B. 10 1/4" DUGAN PETAL AND FAN LG. RUFFLED MASTER BERRY BOWL WITH J.H. EXT. - PUR. (RARE AND AN ABSOLUTE BEAUTY WITH BRIGHT ELEC. BLUE AND YELLOW HIGHLIGHTS)
- 56C. 6 1/2" DUGAN WISHBONE & SPADES FLAT PLATE WITH BASKETWEAVE EXT. - PUR. (VERY SCARCE AND DESIRABLE; HAS BRIGHT MULTI-COLORED IRID.)
57. DUGAN BELLFLOWER TRI-CORNERED CRIMPED EDGE BOWL - PURP.(SCARCE PATTERN IN A VERY DESIRABLE SHAPE)
58. 9" DUGAN ROUND UP FLAT PLATE - BLUE (RARE AND DESIRABLE; SATINY)
59. 5 1/2 - 6" Dugan Apple Blossom Deep Round Bowl - Amy. (actually quite a rare color for this item - a radium look)
- 250 60. DUGAN AMARYLLIS DOME FTD. TRI CORNERED FLARED COMPOTE - DK. MARI. (RARE WITH A PUMPKIN SATINY LOOK AND GREAT DETAILS)
61. Dugan Persian Garden (Basketweave) Ruffled Fruit Bowl Base only - White (desirable part if ya need it; really nice)
62. Dugan Folding Fan Stemmed 6 Ruffled Crimped Edge Compote - P. Opal. (scarce; nice opal.)
63. Dugan Single Flower Framed Tri-Cornered Crimped Edge Bowl - P. Opal. (nice opal.)
64. Dugan Folding Fan Stemmed 6 Ruffled Crimped Edge Compote - P. Opal. (nice opal.; chipped under base)
- 975 65. DUGAN DOUBLE STEM ROSE DOMED 10 RUFFLED BOWL - CELESTE BLUE (RARE, RARE, RARE!!! THIS ONE HAS NO STRETCH EFFECT AT ALL - A VERY RARE EXAMPLE)
- 400 66. DUGAN DOUBLE STEM ROSE STRETCH DOMED 10 RUFFLED BOWL - CELESTE BLUE (TYPICAL STRETCH EFFECT ON THIS RARE ITEM)
- 525 66A. 11 1/4" N THIN RIB STANDARD SIZE SWUNG VASE - SAPPHIRE / GOLD TRIM (VERY RARE AND DESIRABLE; GREAT COLOR AND IRID.)
67. N Daisy and Plume Stemmed 8 Ruffled Rose Bowl - Mari. (satiny)
68. N Daisy and Plume ftd. 8 Ruffled Candy Dish with Blackberry Int. - Green (nice item; scarce)
69. N Double Loop Chalice - Aqua Opal. (always desirable and one of these days I want the creamer)
- 9000 70. N G & C STANDARD SIZED HANDLED WATER PITCHER - ICE GREEN (EXTREMELY RARE WITH SUPER IRID. ON A BRILLIANT ICE GREEN BASE COLOR; PERFECT AND WONDERFUL)
- 1600 71. N G & C LG. ICE CREAM BOWL WITH BASKETWEAVE EXT. - ICE GREEN (VERY RARE AND DESIRABLE COLOR WITH GREAT IRID.)
72. N G & C LG. ICE CREAM BOWL WITH BASKETWEAVE EXT. - WHITE (VERY SCARCE AND DESIRABLE; FROSTY WITH NICE IRID.)
- 275 73. N G & C LG. ICE CREAM BOWL WITH BASKETWEAVE EXT. - PURP. (SUPER IRID. FOR THIS ITEM; A GREAT EXAMPLE)
74. 6" N G & C 2 sided Card Tray with Basketweave Ext. - Amy. (scarce item with a nice satiny finish)
75. N G & C PLATE WITH BASKETWEAVE EXT. - PURP. (IF I RECALL CORRECTLY - THIS ONE IS SUPER)
76. N LEAF AND BEADS FTD. ROSE BOWL - AQUA OPAL. (RARE AND DESIRABLE WITH NICE OPAL. AND OVERLAY)
77. N Leaf and Beads ftd. Rose Bowl - Purp. (scarce; nice irid.)
78. N Leaf and Beads ftd. Rose Bowl - Dk. Mari. (really nice dark example)
79. N Leaf and Beads ftd. Rose Bowl with Stippled Rays Int. - Green
- 1350 80. N EMBROIDERED MUMS FLAT PLATE WITH RIBBED EXT. - ICE GREEN (RARE AND VERY DESIRABLE WITH GREAT IRID.; PLATE MAY BE A BIT CROOKED)
- 225 81. N NIPPON BOWL WITH P.C.E. AND RIBBED EXT. - ICE BLUE (RARE AND DESIRABLE WITH GREAT IRID.)
- 550 82. N HEARTS AND FLOWERS STEMMED RUFFLED COMPOTE WITH RIBBED EXT. - AQUA OPAL. (RARE AND DESIRABLE WITH A MARI. OVERLAY)
- 350 82A. N HEART & FLOWERS STEMMED 6 RUFFLED COMPOTE WITH RIBBED EXT. - BLUE / ELEC. BLUE (RARE AND VERY DESIRABLE WITH REALLY BRIGHT MULTI-COLORED IRID.)
83. N DRAPERY ROSE BOWL - AQUA OPAL. (RARE AND NICE WITH A GREAT BASE COLOR)
- 450 84. N DAISY AND DRAPE FTD. FLARED VASE - BLUE (RARE COLOR WITH SOME BRIGHTER HIGHLIGHTS)
- 84A. 8 3/4" TALL N DRAPERY SWUNG VASE - ICE GREEN (RARE AND DESIRABLE WITH NICE BASE COLOR AND GOOD FEET)
- 850 85. N IVY TOWN PUMP NOVELTY - PUR. (RARE NOVELTY ITEM THAT'S ALWAYS POPULAR AND IT'S PERFECT)
86. 7" N Greek Key domed Eight sided Bowl with Rays Int. - Purp. (nice example of an odd item)
- 400 87. N BEADED CABLE FTD. RUFFLED ROSE BOWL - AQUA OPAL. (RARE AND DESIRABLE WITH NICE OPAL. AND OVERLAY)
- 400 88. N BEADED CABLE FTD. RUFFLED ROSE BOWL - WHITE (RARE COLOR; PERFECT WITH NICE FROSTY IRID.)
89. N Beaded Cable ftd. Ruffled Rose Bowl - Purp. (nice color and irid.)
- 725 90. N PEACOCK AT THE URN LG. FLARED CHOP PLATE - PUR. (RARE AND VERY DESIRABLE; HAS A GREAT MULTI-COLORED SATINY FINISH)
- 1200 91. N PEACOCK AT THE URN LG. ICE CREAM BOWL - ELEC. BLUE (SUPER EXAMPLE; RARE WITH GREAT COLOR AND DETAIL)
92. (6) N Peacock at the Urn ind. Ice Cream Bowls - Blue to Elec. Blue (all ranges of color and irid.; selling choice)
93. (2) N Peacock at the Urn ind. Ice Cream Bowls - Amy. (nice; selling choice)
94. N PEACOCK AT THE URN IND. ICE CREAM BOWL - ICE BLUE

- 875 95. (RARE AND DESIRABLE; PRETTY NICE EXAMPLE)
N PEACOCK AT THE URN LG. ICE CREAM BOWL - ICE BLUE
(RARE AND VERY DESIRABLE; GREAT COLOR AND IRID.)
- 700 96. N PEACOCK AT THE URN LG. ICE CREAM BOWL - ICE
GREEN (ANOTHER EXCELLENT EXAMPLE WITH GREAT
IRID.)
- 300 97. N PEACOCK AT THE URN LG. ICE CREAM BOWL - WHITE
(VERY SCARCE WITH GREAT FROSTY FINISH AND IRID.)
98. N PEACOCK AT THE URN LG. ICE CREAM BOWL - MARI.
(SCARCE WITH NICE COLOR AND IRID.)
99. N Peacock at the Urn ind. Ice Cream Bowl - Mari. (nice color)
- 750 100. N PEACOCKS 8 RUFFLED BOWL WITH RIBBED EXT. - AQUA
OPAL. (RARE AND DESIRABLE WITH NICE OPAL. AND
OVERLAY)
- 350 101. N PEACOCKS 8 RUFFLED BOWL WITH RIBBED EXT. - AQUA
OPAL. (ANOTHER TOUGHIE; HAS A MANUF MARK IN
GLASS)
- 675 102. N PEACOCKS 8 RUFFLED BOWL WITH RIBBED EXT. - ICE
BLUE (RARE AND VERY DESIRABLE; NICE COLOR WITH
GREAT IRID.)
- 300 102A. N PEACOCKS PLATE WITH RIBBED EXT. - LIME ICE GREEN
(RARE BASE COLOR WITH GOLD HIGHLIGHTS)
103. 7 1/2" N Fruits and Flowers 6 Ruffled Bowl with Basketweave Ext.
- Ice Green (rare and desirable color with great irid. and a small
chip on one point)
104. 12 -13" Tall N Diamond Point Swung Vase - Green (nice color and
irid.)
- 900 105. N ROSE SHOW FLAT PLATE - PASTEL MARI.
(ABSOLUTELY SUPER IRID.; BRIGHT AND
FLASHY)
- 700 106. N POPPY SHOW FLARED PLATE - DK. MARI.
(SUPER DARK EXAMPLE; REALLY ATTRACTIVE)
- 1300 106A. N POPPY SHOW 8 RUFFLED BOWL - ICE BLUE (RARE AND
VERY DESIRABLE; HAS BRIGHT MULTI-COLORED IRID.)
- 275 107. N ACORN BURR COVERED BUTTER DISH - GREEN (RARE
COLOR ANYMORE; TOUGH TO FIND)
108. N Acorn Burr Handled Spooner - Green (very scarce part)
109. N Three Fruits Medallion ftd. 8 Ruffled Bowl with Meander Ext. -
Amy. (nice color and irid.)
110. N THREE FRUITS STIPPLED FLAT PLATE WITH RIBBED EXT.
- LAVENDER / HOREHOUND (REALLY RARE BASE COLOR
WITH BRIGHT HIGHLIGHTS)
- 800 110A. N THREE FRUITS STIPPLED 8 RUFFLED BOWL WITH
RIBBED EXT. - AQUA OPAL. (RARE AND VERY DESIRABLE;
NICE OPAL. WITH PASTEL AND GOLD HIGHLIGHTS)
111. 7 1/2" N Wild Strawberry Handgrip Plate with Basketweave Ext. -
Green (very scarce and desirable; sorta satiny)
- 400 112. N STRAWBERRY FLARED PLATE WITH BASKETWEAVE EXT.
- EMERALD GREEN (PROBABLY ONE OF THE BEST EXAM-
PLES AROUND)
113. N Strawberry Flared Plate with Basketweave Ext. - Amy. (very
scarce and desirable - nice and satiny)
114. N GOOD LUCK FLARED PLATE WITH BASKETWEAVE EXT. -
AMY. (RARE ITEM WITH A SATINY FINISH)
- 325 115. N GOOD LUCK FLARED PLATE WITH BASKETWEAVE EXT. -
MARI. (VERY SCARCE; SATINY FINISH)
- 295 115A. N GOOD LUCK BOWL WITH P.C.E. AND RIBBED EXT. - ELEC.
BLUE (SUPER, SUPER EXAMPLE WITH BRIGHT BLUE IRID.)
116. N Good Luck 8 Ruffled Bowl with Ribbed Ext. - Blue (very scarce
with an odd spray)
117. N Good Luck 8 Ruffled Bowl with Basketweave Ext. - Mari.
(satiny and scarce)
118. 9" Imperial Pansy 8 Ruffled Bowl - Purp. (nice and attractive)
119. 9" Imperial Pansy 8 Ruffled Bowl - Helios Green
- 388 120. IMPERIAL CORN BOTTLE - SMOKE (RARE AND VERY
DESIRABLE; SUPER COLOR AND IRID.)
121. Imperial Corn Bottle - Dk. Mari. (great color and irid.; has chips on
spout)
122. IMPERIAL CORN BOTTLE - HELIOS GREEN (SCARCE AND
VERY DESIRABLE)
123. 9" Imperial Grape Flat Plate - Helios Green (scarce)
124. Signed Imperial Iron Cross Spittoon Shaped Urn Vase - Mari.
(nice size and shape; very desirable)
- 350 125. PAIR IMPERIAL DOUBLE SCROLL STRETCH CANDLE-
STICKS - RED (RARE AND VERY DESIRABLE; WELL
MATCHED AND PERFECT)
126. IMPERIAL CHESTERFIELD STRETCH TANKARD WATER
PITCHER - WHITE (RARE ITEM; PERFECT WITH A GREAT
FROSTY LOOK)
127. (2) Imperial Chesterfield Stretch Tumblers - White (very scarce
items; selling choice)
- 127A. U.S. Glass Stretch Stemmed Covered Compote with Orange Stain
and Enam. Floral Decor. - Orange White Stain - Irid. (unusual item
with excellent irid.)
128. 8" Imperial Sand and Shell Deep Round Flared Bowl - Dk. Mari.
(super color and irid.)
129. 7" Imperial Heavy Grape Deep 8 Ruffled Bowl - Purp. (super color
and irid.)
130. IMPERIAL EMBOSSED SCROLL / HEADRESS EXT. LARGE 8
RUFFLED COMPOTE - VIOLET BLUE / PURP. (A SUPER EXAM-
PLE WITH ABSOLUTELY SUPER IRID.)
- 130A. 8 3/4" Imperial Embossed Scroll Lg. Flared Bowl with File Ext. -
Smoke (rare color with beautiful irid.)
131. 8" Imperial Embossed Scroll Deep Round Flared Bowl - Purp. (super
irid.)
132. IMPERIAL SMOOTH RAYS STEMMED 8 RUFFLED COMPOTE -
PURP. (A RARE ITEM WITH SUPER IRID.; A TOUGHIE)
- 132A. 3 1/4" Tall x 4 1/2" Diam. Imperial Wide Panel Stemmed Sherbet -
Wisteria (rare color for this item; nice irid.)
133. IMPERIAL DOUBLE DUTCH / FLORAL AND OPTIC 3 FTD. 8 RUF-
FLED BOWL - PURP. (RARE AND SUPER - A TOUGH ITEM TO
LOCATE)
134. 9 - 9 1/2" Tall Imperial Tall Swung Small sized Vase - Clamb. (scarce
item)
- 575 135. 7 - 8" TALL IMPERIAL PARLOR PANELS SQUATTY SWUNG
FLARED VASE - SMOKE (VERY RARE AND VERY DESIRABLE;
DARK COLOR WITH GREAT IRID.)
136. 9" TALL IMPERIAL BULLSEYE AND BEADS SWUNG FLARED
VASE - PURP. (SCARCE AND VERY DESIRABLE - SUPER ITEM)
137. 12 -13" TALL IMPERIAL STRETCH SWUNG VASE - RED (A
GREAT EXAMPLE; SUPER COLOR AND STRETCH EFFECT)
138. 9 1/2" Imperial Star of David 8 Ruffled Bowl - Purp. (rare and desir-
able; really nice)
139. 8" Imperial Open Rose 8 Ruffled Bowl - Purp. (super irid.; very desir-
able)
140. 9 1/2" IMPERIAL OPEN ROSE LG. ROUND BERRY BOWL - PURP.
(QUITE A RARE ITEM WITH SUPER IRID.)
- 140A. IMPERIAL LUSTRE ROSE FTD. FERNERY - BLUE (RARE COLOR
FOR THIS PATTERN AND AN EXCELLENT EXAMPLE)
141. Fostoria Brocaided Acorn Lg. Ice Bucket with Metal Handle - Ice Blue
(very scarce; nice irid.)
142. Jeanette Gls. Beehive Covered Honey Jar - Aqua (nice color)
143. Westmoreland Miniature Shell ftd. Candy Dish - Amy.
144. 9 1/2" M'burg Fleur de Lei Lg. Bowl with 3 in 1 Edge - Green (scarce
item; satiny finish)
- 2250 145. M'BURG ROSE COLUMNS VASE - AMY. (VERY RARE
AND DESIRABLE; HAS A SILVER / GOLD FINISH)
- 350 146. 8 1/2" M'BURG TROUT AND FLY BOWL WITH 3 IN 1 EDGE -
GREEN (RARE AND DESIRABLE; SATINY)
147. 9 1/2" M'burg Nesting Swan 6 Ruffled Bowl - Amy. (very scarce; satiny
and nice)
148. 9 1/2" M'burg Nesting Swan 6 Ruffled Bowl - Green (another nice
item; satiny finish)
149. M'BURG HOBNAIL ROSE BOWL - MARI. (VERY SCARCE ITEM;
NICE COLOR AND IRID.)
- 2600 150. M'BURG DEEP GRAPE 4 SIDED SQUARE STEMMED
COMPOTE - AMY. (VERY RARE; A REALLY ATTRAC-
TIVE SATINY FINISH)
- 1600 151. 8 3/4" TALL M'BURG FLUTE (OR WIDE PANEL) LG. 6 RUFFLED
STEMMED COMPOTE - DK. MARI. (BLANK FOR FLOWERING
VINE; RADIUM AND VERY RARE)
152. FENTON STRETCH DOUBLE DOLPHIN FAN VASE - TANGERINE
(ALWAYS A DESIRABLE PATTERN AND COLOR; NICE)
- 375 153. FENTON STRETCH 2 PC. HANDLED GUEST SET - CELESTE
BLUE / COBALT HANDLE (RARE AND VERY DESIRABLE;
GREAT COLOR AND IRID.)
- 375 154. PAIR 8 3/4" TALL FENTON FLORENTINE STRETCH CANDLE-
STICKS - WISTERIA (VERY RARE PAIR IN THIS COLOR; REALLY
NICE)
- 300 154A. 8 1/2" TALL FENTON STRETCH INT. PANEL FTD. FAN VASE -
WISTERIA (ACTUALLY A VERY RARE COLOR FOR THIS ITEM;
NICE)
- 154B. 6" TALL FENTON STRETCH PANELED FAN VASE - WISTERIA
(VERY SCARCE ITEM; TOUGH TO FIND IN THIS COLOR)
- 154C. 2 1/2" - 3" Tall x 6 1/2" Diam. Fenton Wide Panel Stemmed Doughnut
Tray - Wisteria (very scarce item with great color and irid.)
155. 7 1/2" FENTON G & C SPATULA FTD. DEEP ROUND
FLARED BOWL - CELESTE BLUE (VERY RARE ITEM
IN THIS COLOR; GO FIND ANOTHER)
156. 8 3/4" Fenton G & C Spatula ftd. Flat Plate - Green (very scarce; nice
color and irid.)

- _____ 157. 9 1/4" Fenton G & C Spatula ftd. Flat Plate - Mari. (another scarce item)
- _____ 158. 8" Fenton Vintage Grape Round Bowl - Powder Blue / Mari. (scarce and odd base color; satiny)
- _____ 159. 8" FENTON CONCORD GRAPE ROUND BOWL - GREEN (RARE AND DESIRABLE PATTERN; SATINY)
- 2200 160. 9 1/2" FENTON PETER RABBIT FLAT PLATE WITH BERRY EXT. - GREEN (EXTREMELY RARE ITEM WITH GREAT DETAIL AND IRID.; HAS A TINY FLAKE ON SIDE OF ONE POINT; NO HARM)
- 1500 161. 9 1/2" FENTON CAPTIVE ROSE FLAT PLATE - AMY. (SUPER EXAMPLE WITH BRIGHT RED AND BLUE IRID.; SUPER)
- _____ 161A. 6" FENTON PERSIAN MEDALLION FLARED PLATE - AMY. (RARE COLOR FOR THIS SIZE; HAS GOLDISH HIGHLIGHTS)
- 1050 162. 9 1/4" FENTON CAPTIVE ROSE FLAT PLATE - ELEC. BLUE (ANOTHER SUPER FENTON ITEM WITH BRIGHT BLUE HIGHLIGHTS)
- 2050 163. 9 1/2" FENTON LEAF CHAIN FLAT PLATE WITH BERRY EXT. - DK. DK. MARI. (SUPER PUMPKIN EXAMPLE WITH GREAT IRID.; NICE)
- 775 164. 9" FENTON PEACOCK AT THE URN FLAT PLATE - DK. MARI. (VERY SCARCE; NICE DARK COLOR WITH A SATINY FINISH)
- 1600 165. 9 1/4" FENTON LOTUS AND GRAPE FLAT PLATE - GREEN (EXTREMELY RARE ITEM WITH NICE COLOR AND REDDISH HIGHLIGHTS; PERFECT AND A BEAUTY!)
- 525 166. 9 1/2" FENTON ORANGE TREE FLAT PLATE - ELEC. BLUE (A REALLY ATTRACTIVE EXAMPLE WITH BRIGHT HIGHLIGHTS; SUPER)
- 600 167. 9 1/4" FENTON HEART AND VINE FLAT PLATE - BLUE (RARE AND DESIRABLE; HAS BRIGHT REDDISH HIGHLIGHTS)
- _____ 168. Fenton Blackberry Spray 4 sided Square Hat - Aqua (scarce base color)
- _____ 169. Fenton Blackberry Spray 6 Ruffled Hat - Amy. (very scarce base color; tough to find)
- 300 170. 9" FENTON DRAGON AND STRAWBERRY LG. ROUND BOWL - AMY. (VERY RARE COLOR FOR THIS ITEM; GREAT COLOR AND IRID.; HAS SOME SPOTS ON IRID.)
- 1300 171. 9 3/4" FENTON DRAGON AND STRAWBERRY LG. 8 RUFFLED BOWL - GREEN (RARE AND VERY DESIRABLE; GREAT COLOR AND IRID. - TOUGH!)
- 600 172. 8 3/4" FENTON DRAGON AND STRAWBERRY LG. ROUND FLARED BOWL - DK. MARI. (VERY SCARCE WITH GREAT COLOR AND IRID.; NICE!)
- _____ 172A. 6" FENTON LITTLE FISHES FTD. 6 RUFFLED SAUCE - AQUA / DK. MARI. (VERY SCARCE BASE COLOR WITH A DARK SATINY IRID.)
- 375 173. 9 1/4" FENTON TEN MUMS BOWL WITH 3 IN 1 EDGE - GREEN (VERY SCARCE; A REALLY ATTRACTIVE EXAMPLE)
- _____ 174. 8 1/4" FENTON CORAL I.C. SHAPED BOWL - GREEN (VERY SCARCE COLOR FOR THIS PATTERN; PRETTY NICE)
- 1600 175. 7 1/4" FENTON 1911 ATLANTIC CITY ELKS FLAT PLATE - BLUE (EXCELLENT EXAMPLE OF THIS DESIRABLE FENTON ITEM)
- 750 175A. 6 3/4" FENTON 1911 ATLANTIC CITY B.P.O.E. ELKS ICE CREAM SHAPED BOWL - BLUE (RARE AND VERY DESIRABLE; HAS A RADIUM TYPE FINISH WITH GOLD AND RED HIGHLIGHTS)
- _____ 176. 8" Fenton Illinois Soldiers and Sailors Flat Plate - Dk. Mari. (rare with super irid. but has 2 dings off face)
- _____ 177. 7 1/4" Fenton Lions 6 Ruffled Bowl - Blue (very scarce with a nice satiny finish)
- _____ 178. 6 3/4" Fenton Illusion 6 Ruffled Bowl - Blue (scarce pattern; satiny)
- 350 179. FENTON FANTAIL INTERIOR / B&B EXT. LG. FTD. ROUND BERRY BOWL - GREEN (VERY RARE COLOR FOR THIS ITEM; REALLY NICE)
- _____ 180. 10 1/2" FENTON CHRYSANTHEMUM LG. FTD. 8 RUFFLED BOWL - GREEN (ANOTHER RARE COLORED FENTON ITEM; REALLY TOUGH TO FIND)
- _____ 181. 8" Fenton Chrysanthemum Spatula ftd. 8 Ruffled Bowl - Powder Blue / Mari. (very scarce base color for this pattern)
- _____ 182. 10 3/4" FENTON TWO FLOWERS BALL FTD. LG. ICE CREAM SHAPED BOWL - LIME GREEN / MARI. (RARE COLOR FOR THIS ITEM WITH A SATINY MARI. OVERLAY)
- _____ 183. 9 1/2" Fenton Two Flowers ball ftd. Lg. 8 Ruffled Bowl - Blue (very scarce; nice impressive piece)
- _____ 183A. 9 1/4" Fenton Little Flowers Lg. Ice Cream Shaped Bowl - Blue (actually quite a nice example)
- _____ 184. Fenton Peacock at the Urn Stemmed Flared Goblet Shaped Compote - Lt. Mari. / Vaseline (very scarce and desirable esp. with the light overlay)
- 350 185. 9" FENTON STAG AND HOLLY SPATULA FTD. FLAT PLATE - MARI. (RARE AND DESIRABLE; SATINY WITH GREAT DETAIL)
- _____ 186. 8" Fenton Stag and Holly Spatula ftd. Ice Cream Shaped Bowl - Green (very scarce; nice color and satiny irid.)
- _____ 187. 8" Fenton Stag and Holly Spatula ftd. Ice Cream Shaped Bowl - Dk. Mari. (excellent example in both color and irid.)
- _____ 188. 7 1/2" Fenton Stag and Holly Spatula ftd. 8 Ruffled Bowl - Dk. Mari. (nice color and irid.)
- _____ 189. Fenton Stag and Holly Spatula ftd. Giant Rose Bowl - Dk. Mari. (rare and under priced; nice color and detail)
- 375 190. 10 1/4" FENTON STAG AND HOLLY BALL FTD. LG. ICE CREAM SHAPED BOWL - ELEC. BLUE (ONE OF MY FAVORITE ITEMS; HAS GREAT IRID.)
- _____ 191. 10 1/4" FENTON STAG AND HOLLY BALL FTD. LG. ICE CREAM SHAPED BOWL - RADIUM BLUE (VERY SCARCE AND UNUSUAL; RADIUM WITH BLUE AND GOLD HIGHLIGHTS)
- _____ 192. 10 1/2" Fenton Stag and Holly Spatula ftd. Lg. Ice Cream Shaped Bowl - Blue (scarce with a satiny finish)
- _____ 193. 9 1/2" Fenton Stag and Holly Spatula ftd. Deep 8 Ruffled Bowl - Blue (very scarce with a nice satiny finish)
- 310 194. 10 1/2" FENTON STAG AND HOLLY BALL FTD. LG. ICE CREAM SHAPED BOWL - AQUA / MARI. (RARE AND DESIRABLE BASE COLOR WITH A DARKER OVERLAY)
- 325 195. 11" FENTON STAG AND HOLLY BALL FTD. LG. 8 RUFFLED BOWL - SMOKE / MARI. (UNUSUAL BASE COLOR; SORTA GRAY WITH A NICE BURNT MARIGOLD LOOK)
- _____ 196. 10 1/2" Fenton Stag and Holly Spatula ftd. Lg. 8 Ruffled Bowl - Mari. (satiny)
- _____ 197. FENTON HOLLY 6 RUFFLED HAT - RED (RARE AND DESIRABLE; SORTA DARK COLOR AND IRID.)
- _____ 198. 6" FENTON STIPPLED RAYS I.C. SHAPED SAUCE - RED (BRIGHTER EXAMPLE; PRETTY NICE COLOR)
- _____ 199. 5 3/4" Fenton Stippled Rays Deep Round Flared Sauce - Red (unusual; has a non-irid. interior)
- _____ 200. 9 1/2" FENTON LEAF CHAIN FLAT PLATE WITH BERRY EXT. - DK. MARI. (RARE AND DESIRABLE WITH SUPER BRIGHT IRID.)
- _____ 201. 9 1/2" Fenton Leaf Chain Flared Plate with Berry Ext. - Lt. Mari. (very scarce with nice average irid.)
- _____ 202. 9 1/4 - 1/2" Fenton Leaf Chain Flat Plate with Berry Ext. - Green (scarce with typical irid. for one of these)
- _____ 203. 7 3/4" Fenton Leaf Chain Flat Plate with Bearded Berry Ext. - Mari (scarce with a satiny finish)
- _____ 204. Fenton Garland ftd. Rose Bowl - Blue (nice color)
- 425 205. 8 3/4" FENTON PLAID 8 RUFFLED BOWL - BLUE (RARE PATTERN; NICE WITH A SATINY FINISH)
- _____ 206. FENTON STRAWBERRY 2 HANDLED BON BON WITH RARE STRAWBERRY ON COLLAR BASE - BLUE (VERY RARE VARIATION; DIFFICULT TO FIND)
- _____ 207. Fenton Captive Rose 2 Handled 4 sided Bon Bon - Amy. (scarce color for this item)
- _____ 208. 6 1/2" Fenton Pine Cone I.C. Shaped Bowl - Blue (satiny; nice)
- _____ 209. Fenton Lotus and Poinsettia ftd. 6 Ruffled Sauce - Blue (silvery)
- _____ 210. 9" Fenton Holly 6 Ruffled Bowl - Green (sm. chip on exterior edge)
- _____ 211. Fenton 2 Row Open Edge J.I.P. Hat - Aqua / Lt. Mari. (scarce color; has light overlay)
- _____ 212. 7" Jenkins Field Thistle Deep Round Bowl - Dk. Mari. (rare shape for this pattern; haven't seen many)
- _____ 213. IMPERIAL OPTIC AND BUTTONS HANDLED CUP AND SAUCER - DK. MARI. (RARE SET; DARK COLOR AND IRID.; NICE)
- _____ 214. Imperial Flute and Cane Stemmed Round Sherbet - Mari. (scarce item)
- _____ 215. EUROPEAN RANGER TUMBLER WITH REGISTRY MARK - DK. MARI. (RARE AND A BEAUTY - SUPER IRID.)
- _____ 216. Imperial Flute Toothpick Holder - Green (scarce)
- _____ 217. Imperial Flute Toothpick Holder - Dk. Mari. (scarce; nice)
- _____ 218. Fenton 2 Row Open Edge Blackberry 2 sided Lg. Hat - Mari.
- _____ 219. Fenton Orange Tree Handled Punch Cup - Mari.
- _____ 220. 8" Imperial Heavy Grape Flat Plate - Dk. Mari. (1/4" chip on exterior edge)
- _____ 220A. Signed I.G. Homestead Chop Plate - Smoke (super irid. on this 1960's item)



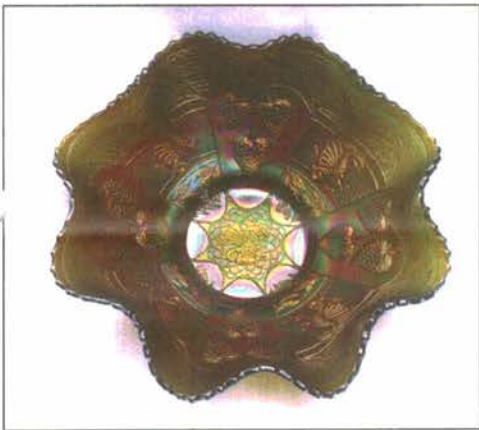
Lot #105



Lot #135



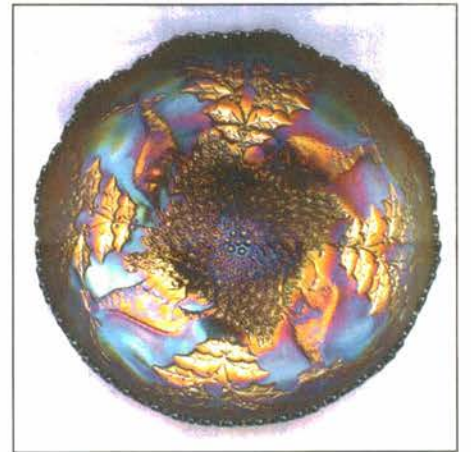
Lot #60



Lot #171



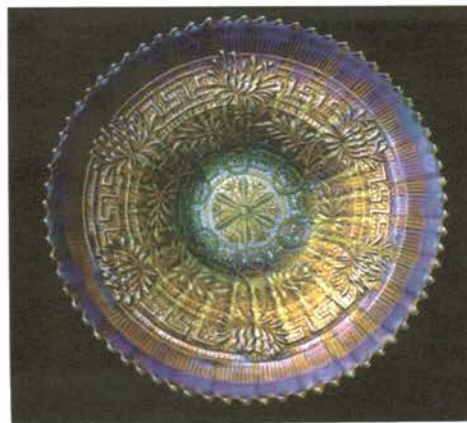
Lot #96



Lot #190



Lot #155



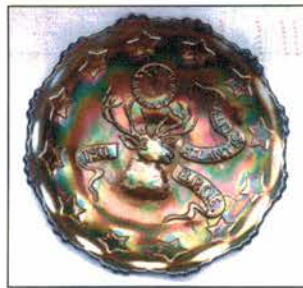
Lot #80



Lot #55



Lots #85, 47, 84



Lot #175



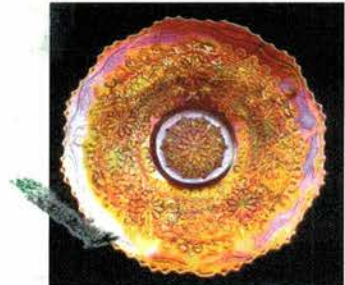
Lots #125 & 137



Lot #167



Lot #162



Lot #163



Lot #90



Lot #170



Lot #73

Burns Auction Service

P.O. Box 608
Bath, New York 14810

First Class
US Postage
PAID
Permit No. 7
Hammondsport, NY

N.C.C.C. Convention Auction



Lot #35

LEE MARKLEY
BOX 306
MENTONE IN 46539

