

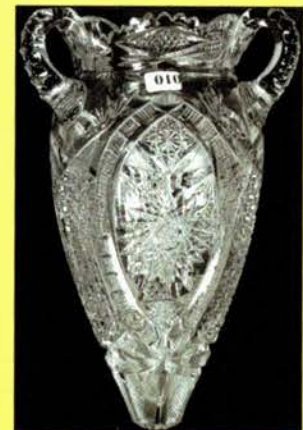
Cut Glass, Wave Crest & Carnival Glass

# AUCTION



FRIDAY, SEPTEMBER 19TH 6:00 P.M.  
SATURDAY, SEPTEMBER 20TH, 9:30 A.M.  
2003

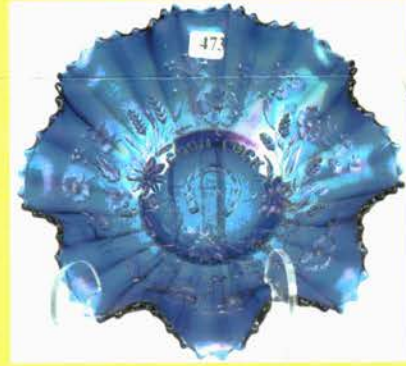
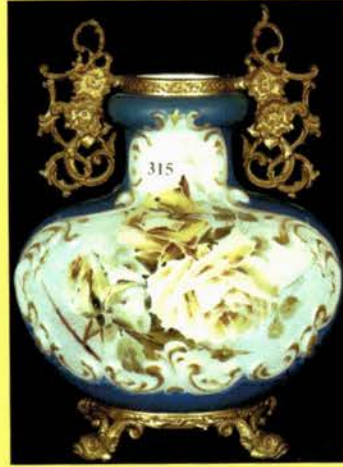
SHERATON FOUR POINTS HOTEL  
(Earth City Exit #231b off I-70)  
St. Louis, Missouri



Over 200 photos and a map can be located at:  
[www.woodyauction.com](http://www.woodyauction.com)









	SQUARE SHAPED HINGED BOX - CREAM & BLUE W/ FLORAL DECOR - NICE METAL FITTINGS - EGG CRATE MOLD	339	RARE SHINY, SIGNED NAKARA, SQUARE SHAPED FERNER - GREEN W/ METAL RIM - YELLOW FLORAL DECOR	
320A	2 3/4" SIGNED WAVE CREST (STAMP MARK) PERFUME BOTTLE - WHITE W/ PINK FLORAL DECOR - no stopper	340	NICE! 3" X 4 1/2" SIGNED WAVE CREST (STAMP MARK) ROUND HINGED JEWEL BOX W/ EMBOSSED "ZINNIA" LID - DARK GREEN MARBLE BACKGROUND W/ PINK & YELLOW LID	
321	4" UNMARKED WAVE CREST BALL SHAPED ATOMIZER - PINK & WHITE W/ BLUE FLORAL DECOR	341	3" X 4" SIGNED NAKARA SQUARE SHAPED HINGED BOX - PINK & YELLOW W/ BLUE FLORAL & ENAMEL HIGHLIGHTS - ORIGINAL LINING	
322	4 3/4" X 6" UNMARKED WAVE CREST ROUND HINGED BOX - PINK & WHITE W/ BLUE FLORAL HIGHLIGHTS - SWIRL MOLD - EXTRA NICE!	342	7 1/2" GRAPE & CABLE BOWL W/ PULLED SIDES - MARIGOLD	
323	PAIR UNMARKED WAVE CREST SALT & PEPPER SHAKERS - 3 3/4" BROWN & GREEN TONES - INDIAN CHIEF PORTRAIT SCENE - FADING	343	3 1/2" X 10" GRAPE & CABLE PATTERN BOWL - PIE CRUST EDGE - MARIGOLD	
324	3 1/2" X 5 1/2" UNMARKED WAVE CREST ROUND HINGED BOX - LIGHT PINK W/ PINK & YELLOW ROSE DECOR - SWIRL MOLD - CUTE	344	9" GRAPE & CABLE PLATE - STIPPLED - RICH MARIGOLD	
325	9 1/4" SIGNED WAVE CREST (STAMP MARK) TWO HANDLED BURMESE COLORED VASE - PINK FLORAL DECOR - VERY RARE COLOR!	345	9" BUTTERFLY & GRAPE WATER PITCHER - MARIGOLD	
326	2" X 5" UNMARKED WAVE CREST TWO HANDLED PIN DISH - CREAM COLOR W/ BLUE FLORAL DECOR - SWIRL MOLD - GOLD GILT RIM & HANDLES	346	(3) 4" INVERTED FAN & FEATHER TUMBLERS - MARIGOLD - reproduction	
327	1 1/2" X 6 1/2" SIGNED WAVE CREST (BANNER MARK) OVAL SHAPED PIN TRAY - WHITE & PINK W/ FLORAL DECOR - GOLD GILT FEET	347	6" ORANGE TREE TWO HANDLED LOVING CUP - NICE MARIGOLD - handle fracture	
328	5" X 7" SIGNED WAVE CREST (BANNER MARK) SQUARE SHAPED DRESSER BOX - PINK & WHITE W/ WHITE DAISY DECOR - EGG CRATE MOLD	348	6" X 7" HANGING CHERRIES PATTERN COVERED BUTTERDISH - MARIGOLD - chip under edge	
329	RARE SIZE! 7" SIGNED WAVE CREST (BANNER MARK) SQUARE SHAPED BISCUIT JAR - PINK & WHITE W/ BLUE FLORAL DECOR - SILVER PLATE LID & BAIL - NICE	349	7 1/2" RASPBERRY MILK PITCHER - MARIGOLD	
330	VERY RARE! 2 1/4" X 3" SIGNED WAVE CREST (BANNER MARK) SQUARE SHAPED HINGED JEWEL BOX - LIGHT PINK W/ NIAGARA FALLS SCENIC DECOR - EGG CRATE MOLD	350	9" PEACOCK ON THE FENCE PLATE - MARIGOLD - NICE EDGE!	
331	PAIR UNMARKED WAVE CREST CREAMER & SUGAR W/ SILVER PLATE LID & HANDLES - PINK & WHITE W/ BLUE FLORAL DECOR - SWIRL MOLD	351	9" DRAGON & LOTUS EIGHT SCALLOP BOWL - MARIGOLD	
332	4" X 4 3/4" SIGNED WAVE CREST (BANNER MARK) ROUND HINGED BOX - WHITE & PINK W/ BLUE FLORAL DECOR - FLORAL & SCROLL MOLD	352	5" X 9" THREE FOOTED, TWO FLOWERS PATTERN CENTER PIECE BOWL - RICH MARIGOLD	
333	2 1/2" SIGNED WAVE CREST (STAMP MARK) FOOTED TOOTHPICK HOLDER - LIGHT BLUE W/ PINK FLORAL DECOR - GOLD GILT FEET	353	7" LOTUS & GRAPE PATTERN TWO HANDLED FOLDED BON-BON - MARIGOLD	
334	3 1/2" X 5" SIGNED NAKARA HEXAGON SHAPED HINGED BOX - PINK W/ APPLIED DAISIES - ORIGINAL LINING!	354	4 1/2" VINTAGE PATTERN BERRY DISH SET IN SILVER PLATE SWEET MEAT HOLDER	
335	UNIQUE SHAPE! 10" UNMARKED NAKARA TWO HANDLED, FOOTED VASE - BURMESE COLOR W/ GREEN TRIM - LAVENDER COLORED FLORAL DECOR - CUTE	355	10 1/2" IMPERIAL GLASS HOMESTEAD PATTERN PLATE - MARIGOLD - REPRODUCTION	
336	8" SIGNED WAVE CREST (BANNER MARK) TWO HANDLED STICK VASE - PINK & WHITE W/ BLUE FLORAL DECOR - FANCY GOLD GILT HANDLES & BASE	356	7" TWIGS PLATE - MARIGOLD	
337	7 1/2" X 9" SIGNED WAVE CREST (STAMP MARK) FOOTED DRESSER BOX W/ ROUND LID & MATCHING OCTAGON SHAPED BASE - SAME AS PICTURED ON COHEN BOOK COVER - LIGHT GREEN & PINK W/ LARGE PINK FLORAL DECOR - WHITE LINING	357	8 3/4" PEACOCK ON THE FENCE PLATE - STIPPLED - RICH MARIGOLD	
338	8" UNMARKED WAVE CREST SQUARE SHAPED BISCUIT JAR W/ SILVER PLATE LID & BAIL - WHITE & PINK W/ BLUE FLORAL DECOR - SCROLL TYPE MOLD	358	8" X 9 1/2" MIKADO PATTERN COMPOTE - MARIGOLD TO WHITE	
		359	3 1/4" X 10 1/4" IMPERIAL GRAPE PATTERN BOWL - MARIGOLD	
		360	6 3/4" X 11 1/2" THREE FOOTED, GRAPE & CABLE PATTERN CENTER PIECE BOWL - MARIGOLD - NICE	
		361	9 1/2" RIPPLE PATTERN VASE - MARIGOLD	
		362	6" X 7 1/2" LUSTER ROSE PATTERN COVERED BUTTERDISH - MARIGOLD	
		363	2 3/4" X 8 3/4" GOOD LUCK PATTERN BOWL - MARIGOLD	
		364	5 1/4" X 7" THREE FOOTED, STAG & HOLLY PATTERN ROSE BOWL - MARIGOLD	
		365	9 1/4" STAG & HOLLY SPATULA FOOTED PLATE - MARIGOLD	
		366	(5) 4" GRAPE & GOTHIC ARCHES PATTERN TUMBLERS - MARIGOLD	
		367	3 1/4" BANDED GRAPE PATTERN MUG - MARIGOLD	
		368	6 1/4" PINECONE PATTERN PLATE - MARIGOLD	
		369	9 1/4" BOUQUET PATTERN WATER PITCHER - NICE MARIGOLD	
		370	9" ROSE SHOW BOWL - WHITE - PERFECT!	
		371	4 1/4" GRAPE & CABLE TUMBLER - MARIGOLD	
		372	(2) 4" IMPERIAL GRAPE PATTERN TUMBLERS - MARIGOLD	
		373	10 1/4" CUT FLOWERS PATTERN CYLINDRICAL VASE - MARIGOLD	



	AND PINK FLORAL DECOR - FANCY GOLD GILT HANDLES & FEET - VERY PRETTY!	304	DECOR - EGG CRATE & SCROLL TYPE MOLD
289	3 1/2" X 5 1/2" UNMARKED WAVE CREST ROUND HINGED BOX - WHITE & BLUE W/ WHITE DAISY DECOR - SWIRL MOLD		PAIR UNMARKED WAVECREST CREAMER & SUGAR - BLUE & CREAM W/ PINK FLORAL DECOR - SILVER PLATE LID & HANDLES - SWIRL MOLD - CUTE!
290	10" SIGNED WAVE CREST (BANNER MARK) WALL MOUNT WHISK BROOM HOLDER - YELLOW W/ PINK FLORAL DECOR - FANCY GOLD GILT FRAME - ORIGINAL LINING AND WHISK BROOM	305	3 1/4" X 5" SIGNED WAVE CREST (BANNER MARK) ROUND HINGED BOX W/ ORIGINAL "WATERBURY" CLOCK WORKS SET IN LID - WHITE & LIGHT BLUE W/ PINK FLORAL DECOR - ORIGINAL LINING
290A	8" UNMARKED WAVE CREST BISCUIT JAR W/ SILVER PLATE LID & BAIL - CREAM & PINK W/ LARGE BLUE FLORAL DECOR	305A	2 1/2" X 3" UNMARKED WAVE CREST SQUARE SHAPED HINGED JEWEL BOX - WHITE W/ PINK FLORAL DECOR
291	4 1/4" X 5 1/2" UNMARKED WAVE CREST RECTANGULAR SHAPED LETTER HOLDER - WHITE W/ LARGE PINK FLORAL DECOR - GOLD GILT RIM - EGG CRATE MOLD	306	5 1/2" X 5" UNMARKED WAVE CREST SQUARE SHAPED HINGED BOX - WHITE & GREEN W/ YELLOW TIGER LILY DECOR - VERY ATTRACTIVE!
292	4" X 7 1/2" SIGNED NAKARA ROUND HINGED DRESSER BOX W/ METAL FINIAL - PINK & YELLOW W/ BLUE FLORAL DECOR - VERY ATTRACTIVE!	307	3 3/4" X 7" SIGNED WAVE CREST (STAMP MARK) ROUND HINGED BOX - WHITE & YELLOW W/ BLUE FLORAL DECOR - SCROLL & LATTICE TYPE MOLD - ORIGINAL LINING IN LID & ORIGINAL KEY
293	4 3/4" UNMARKED WAVE CREST TWO HANDLED SPOONER - WHITE & CREAM W/ PINK FLORAL DECOR - SILVER PLATE HANDLES & RIM	308	3 1/2" X 5 1/4" UNMARKED WAVE CREST ROUND HINGED BOX - YELLOW & WHITE W/ FERN & FLORAL DECOR - SWIRL MOLD
294	PAIR UNMARKED WAVE CREST CREAMER & SUGAR W/ SILVER PLATE LID, SPOUT & HANDLES - WHITE W/ PINK FLORAL BLOSSOM DECOR	309	9" SIGNED KELVA STICK VASE - GREEN MOTTLED BACKGROUND W/ PINK FLORAL DECOR - GOLD GILT FEET
295	4" X 5 1/2" SIGNED WAVE CREST (STAMP MARK) OVAL SHAPED BOX - GREEN W/ SCENIC SAILBOATS & CHERUB DECOR - NICE MOLD - ORIGINAL LINING	310	12" SIGNED WAVE CREST (BANNER MARK) TWO HANDLED VASE - YELLOW W/ PINK THISTLE DECOR - FANCY GOLD GILT HANDLES & FEET
295A	1 1/2" X 4" SIGNED WAVE CREST (BANNER MARK) OPEN DISH - WHITE & PINK W/ BLUE FLORAL DECOR - METAL RIM	310A	2 1/4" X 3 1/2" SIGNED WAVE CREST (STAMP MARK) ROUND HAIR RECEIVER W/ ORIGINAL METAL TOP - BLUE W/ PINK FLORAL DECOR
296	3" X 3" SIGNED WAVE CREST (BANNER MARK) SQUARE SHAPED HINGED JEWEL BOX - BLUE & WHITE W/ PINK FLORAL DECOR - EGG CRATE MOLD	311	3 1/4" X 4 1/4" SIGNED NAKARA SQUARE SHAPED HINGED BOX - GREEN W/ LARGE PINK ROSE DECOR
297	2" X 4" SIGNED WAVE CREST (BANNER MARK) OPEN PIN DISH - WHITE & BLUE W/ PINK FLORAL DECOR - GOLD GILT RIM & BASE - feet missing	312	4 3/4" X 5 1/2" SIGNED WAVE CREST (BANNER MARK) ROUND HINGED BOX - BLUE W/ PINK FLORAL DECOR - EIGHT PANEL MOLD - NEW LINING
298	4 1/4" X 5 1/2" UNMARKED WAVE CREST RECTANGULAR SHAPED LETTER HOLDER - WHITE & PINK W/ LARGE FLORAL DECOR - GOLD GILT RIM - sm base repair	313	3 1/2" X 5 1/2" SIGNED NAKARA BISHOPS HAT SHAPED BOX - GREEN & PINK W/ PINK FLORAL DECOR
299	3 1/2" X 8 1/2" SIGNED WAVE CREST (BANNER MARK) RECTANGULAR SHAPED HINGED GLOVE BOX - BLUE & WHITE W/ PINK FLORAL DECOR - ORIGINAL KEY - CUTE	314	3 1/2" X 6" SIGNED WAVE CREST (STAMP MARK) ROUND HINGED BOX W/ MIRROR TOP - GREEN W/ PINK FLORAL DECOR - mirror not original
300	24" (TOP OF SHADE) SIGNED WAVE CREST (STAMP MARK) BANQUET LAMP - BLUE & CREAM W/ VILLAGE DECOR - BRASS BASE, KEROSENE INSERT - ETCHED GLOBE W/ GREEK KEY & VINTAGE DECOR - UNIQUE TO BE SIGNED	315	10" WAVE CREST TWO HANDLED COBALT BLUE VASE W/ FANCY GOLD GILT HANDLES & FEET - YELLOW ROSE Décor - one handle w/ repair - VERY RARE!
300A	1 1/2" X 3" SIGNED WAVE CREST (STAMP MARK) OPEN PIN DISH W/ GOLD GILT HANDLES - YELLOW W/ BONNET BABY DECOR - ORIGINAL LINING	315A	1 1/2" X 3" SIGNED WAVE CREST (BANNER MARK) ROUND OPEN PIN DISH - LAVENDER & YELLOW W/ BLUE FLORAL DECOR - SHELL MOLD
301	4" X 8" SIGNED WAVE CREST (STAMP MARK) ROUND HINGED DRESSER BOX - LIGHT YELLOW W/ PINK FLORAL DECOR - LARGE SCROLL TYPE MOLD - ORIGINAL LINING	316	4" X 7" UNMARKED WAVE CREST ROUND HINGED DRESSER BOX - CREAM W/ BLUE HIGHLIGHTS AND PINK FLORAL DECOR - SWIRL MOLD
302	9" UNMARKED WAVE CREST SQUARE SHAPED BISCUIT JAR W/ SILVER PLATE LID & BAIL - WHITE & PINK W/ FLORAL DECOR - SCROLL TYPE MOLD - needs rechalked	318	4 1/4" X 5" UNMARKED WAVE CREST SQUARE SHAPED HINGED BOX - CREAM COLOR W/ BLUE FLORAL & BRANCH DECOR - "TOBACCO" W/ SPONGE HOLDER IN LID - EGG CRATE MOLD
303	3" X 5" SIGNED WAVE CREST (BANNER MARK) SQUARE SHAPED FERNER W/ ORIGINAL METAL LINER - WHITE & CREAM W/ BLUE FLORAL	319	4" X 7" UNMARKED WAVE CREST ROUND HINGED DRESSER BOX - WHITE W/ PINK & YELLOW ROSE DECOR - SWIRL MOLD - VERY PRETTY!
		320	2 1/4" X 6" UNMARKED NAKARA OPEN SWEET MEAT W/ GOLD GILT RIM & BAIL - BURMESE COLOR W/ BLUE FLORAL DECOR
			3 3/4" X 6 3/4" UNMARKED WAVE CREST



374	4" X 5 1/2" LEAF AND BEADS FOOTED ROSE BOWL - QUALITY AQUA OPALESCENT!	404	BOWL - BLUE
375	RARE! 8 3/4" GRAPE & CABLE PATTERN PLATE - AQUA OPAL	405	6 1/4" X 7" HANGING CHERRIES PATTERN COMPOTE - AMETHYST - NICE
375A	9" ROSE SHOW PATTERN BOWL - BEAUTIFUL AQUA OPAL!!	406	VERY RARE! 3 1/4" X 8" STAG & HOLLY PATTERN SPATULA FOOTED BOWL - RED!
376	7 1/2" VINTAGE PATTERN BOWL - MARIGOLD	407	3 1/2" ORANGE TREE PATTERN COVERED POWDER JAR - BLUE
377	3 1/2" ORANGE TREE MUG - MARIGOLD	408	ORANGE TREE PATTERN PUNCH CUP - BLUE
378	4" APPLE TREE PATTERN TUMBLER - MARIGOLD	409	9 1/2" ORANGE TREE PATTERN PLATE - BLUE
379	4 1/4" GRAPE ARBOR TUMBLER - RICH MARIGOLD	410	6" ORANGE TREE PATTERN, TWO HANDLED LOVING CUP - BLUE
380	NICE! 3 1/4" X 9" THREE FRUITS PATTERN, SPATULA FOOTED BOWL - STIPPLED - ICE GREEN!	411	WOW! FOUR PIECE SPRINGTIME PATTERN TABLE SET - BUTTERDISH, CREAMER, COVERED SUGAR & SPOONER - PURPLE
380A	10" PEACOCK AT THE URN ICE CREAM SHAPED BOWL - COBALT BLUE W/ GREAT GOLDEN IRIDESCENCE	412	3 1/2" ORANGE TREE PATTERN MUG - BLUE
381	4 1/4" TUMBLER - PATTERN SIMILAR TO FIELD FLOWER - MARIGOLD	413	3 1/2" ORANGE TREE PATTERN MUG - BLUE
382	8 3/4" GRAPE & CABLE PATTERN PLATE - STIPPLED - ADVERTISING "OLD ROSE DISTILLING CO., WINES & LIQUORS, CHICAGO" - GREEN	414	ORANGE TREE PATTERN TABLE SET - BUTTERDISH, CREAMER & SPOONER - BLUE
383	2 1/2" X 9" DRAGON & LOTUS PATTERN BOWL - GREEN	415	7" ORANGE TREE PATTERN HATPIN HOLDER - BLUE
384	9" PEACOCK ON THE FENCE PLATE - ICE GREEN	416	10 1/4" X 11" TWO PART GRAPE & CABLE PATTERN PUNCHBOWL - FINE IRIDESCENCE - PURPLE
385	8 3/4" THREE FRUITS SPATULA FOOTED BOWL - AQUA OPALESCENT - STIPPLED	417	7 3/4" STRAWBERRY PATTERN "HAND GRIP" PLATE - PURPLE
385A	9" STRAWBERRY PATTERN PLATE - BASKETWEAVE EXTERIOR - GREEN	418	7 3/4" LEAF CHAIN PATTERN PLATE - BLUE
386	8 3/4" GRAPE & CABLE PATTERN PLATE - STIPPLED - ADVERTISING "OLD ROSE DISTILLING CO., WINES & LIQUORS, CHICAGO" - GREEN	419	4 1/4" ORANGE TREE PATTERN TUMBLER - BLUE
387	5 1/2" VINTAGE PATTERN BERRY DISH - GREEN	420	6 1/2" GRAPE & CABLE PATTERN "HAND GRIP" PLATE - AMETHYST
388	10 1/2" GRAPE & CABLE PATTERN ICE CREAM SHAPED BOWL - BASKETWEAVE EXTERIOR - GREEN	421	12 1/4" X 13 1/2" TWO PART GRAPE & CABLE PATTERN PUNCH BOWL - RARE COBALT BLUE TOP, PURPLE BASE
389	2 3/4" X 9" PEACOCK AT THE URN BOWL - BLUE	422	9" GRAPE & CABLE PATTERN PLATE - PURPLE
390	8 3/4" ACORN & BURRS PATTERN WATER PITCHER W/ (6) MATCHING TUMBLERS - EXTRA NICE GREEN	423	4 1/2" GRAPE & CABLE PATTERN PERFUME/ COLOGNE BOTTLE - PURPLE
390A	7 3/4" STAG & HOLLY PATTERN SPATULA FOOTED BOWL - MARIGOLD	424	9" X 6 1/2" GRAPE & CABLE PATTERN COVERED COMPOTE - AMETHYST
391	2 1/4" X 9" DRAGON & LOTUS PATTERN BOWL - BLUE	425	9" GRAPE & CABLE PATTERN PLATE - PURPLE
392	2 1/2" X 9" HOLLY PATTERN BOWL - BLUE	426	11 3/4" GRAPE & CABLE PATTERN WHISKEY DECANTER W/ (6) MATCHING SHOT GLASSES - PURPLE
393	6" X 6 3/4" PERSIAN GARDEN PATTERN PEDESTAL COMPOTE - AQUA OPAL!!	427	9" GRAPE & CABLE PATTERN PLATE - STIPPLED - RIBBED EXTERIOR - DARK PURPLE
394	9 1/4" THREE FRUITS PATTERN PLATE - SILVER IRIDESCENCE - BLUE	428	6" X 12" GRAPE & CABLE PATTERN BANANA BOWL - SWIRLED SMOKEY BLUE COLOR - NICE
395	10 1/4" SIGNED NUART, CHRYSANTHEMUM PATTERN PLATE - BEAUTIFUL GREEN!	429	9" GRAPE & CABLE PATTERN PLATE - PURPLE
396	9" THREE FRUITS PATTERN PLATE - STIPPLED - RIBBED EXTERIOR - PURPLE - EXTRA NICE	430	7 1/2" GRAPE & CABLE PATTERN TWO HANDLED COVERED CRACKER JAR - PURPLE
397	2 1/2" X 8 1/2" THREE FRUITS PATTERN BOWL - STIPPLED - DARK AMETHYST	431	GRAPE & CABLE PATTERN TABLE SET - BUTTERDISH, COVERED SUGAR & SPOONER - PURPLE
398	9 1/2" THREE FRUITS PATTERN PLATE - AMETHYST	432	2 1/4" X 9" GRAPE & CABLE PATTERN BOWL - PURPLE
399	6 3/4" HANGING CHERRIES PATTERN MILK PITCHER - AMETHYST	433	4" BLACKBERRY PATTERN GRAVY BOAT - AMETHYST
400	3" X 6 1/4" BLACKBERRY SPRAY HAT SHAPED DISH - CHERRY RED	434	4 1/2" X 7 3/4" GRAPE & CABLE PATTERN FOOTED FERNERY - AMETHYST - fracture
401	8 3/4" THREE FRUITS PATTERN PLATE - BASKETWEAVE EXTERIOR - AMETHYST	435	4 1/4" X 6" GRAPE DELIGHT PATTERN FOOTED NUT BOWL - AMETHYST
402	2 1/2" X 8 1/2" STRAWBERRY PATTERN BOWL - AMETHYST	436	10 1/4" SIGNED NUART, HOMESTEAD PATTERN PLATE - FINE AMBER
403	3" X 8 1/2" STRAWBERRY & DRAGON PATTERN	437	2 1/2" X 9" DRAGON & LOTUS PATTERN BOWL - BLUE
		438	4" FISHERMAN'S PATTERN MUG - AMETHYST
		439	4" STORK & RUSHES PATTERN MUG - PURPLE
		440	8" GRAPE & CABLE PATTERN "HAND GRIP" PLATE - BASKETWEAVE EXTERIOR - AMETHYST
			7 1/2" GRAPE & CABLE PATTERN COVERED HUMIDOR - NICE CONDITION - PURPLE

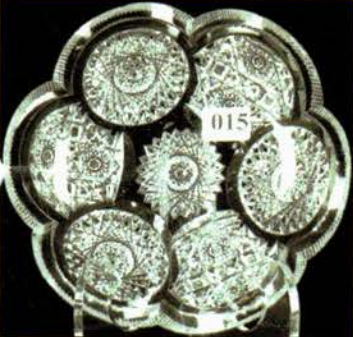
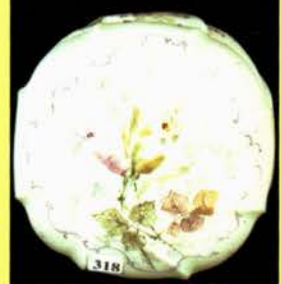




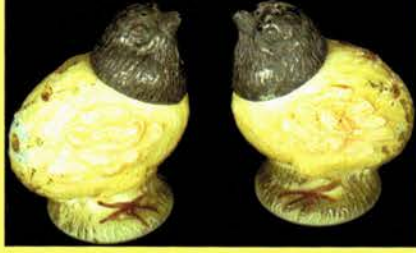




**NOTE:** Photos are arranged and displayed according to available space – check description for actual dimensions.



See You at the next Woody Auction!





Preview: Friday, 3:00 p.m. & Saturday, 7:30 a.m.



**WOODY AUCTION**  
P.O. Box 618  
Douglass, KS 67039 (316) 747-2694

PRE-SORTED  
FIRST CLASS  
U.S. POSTAGE  
PAID  
PERMIT #662  
WICHITA, KS

LEE MARKLEY  
PO BOX 306  
MENTONE IN 46539-0306

2906



Visit us on the web at: [www.woodyauction.com](http://www.woodyauction.com) or  
call us directly at: (316) 747-2694.

# Cut Glass, Wave Crest, & Carnival Glass AUCTION

Sheraton Four Points Hotel

(Earth City Exit #231b off I-70)

St. Louis, Missouri

Friday, September 19th, 6:00 p.m.

Saturday, September 20th,  
9:30 a.m. 2003

