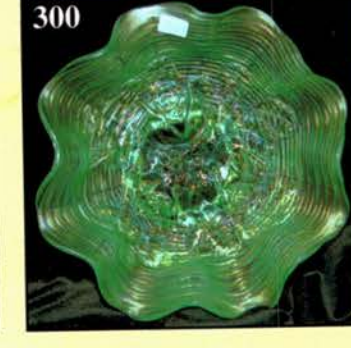
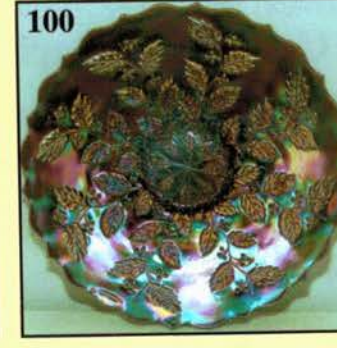
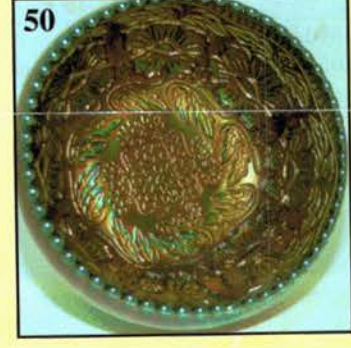
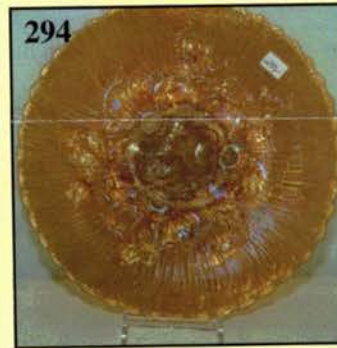
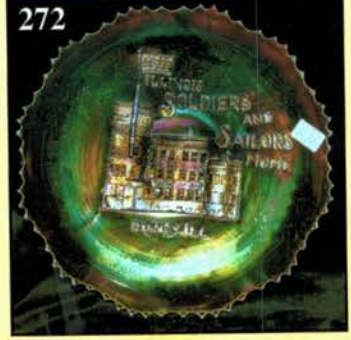
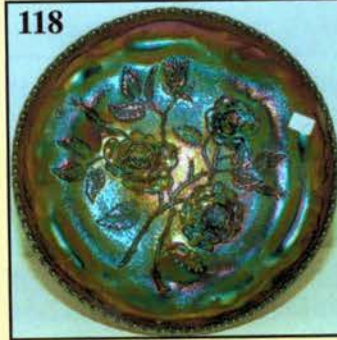


CARNIVAL GLASS AUCTION

Saturday, September 13, 2003

☛ 9:00 a.m. C.D.T.



Held By the Mickey Reichel Antique & Auction L.C.

Office: 660-882-5292 • Home: 660-882-5283

☛ WEB SITE: <http://www.yourauctionpage.com/reichel>

E-mail: mreichel@undata.com

Held Inside the Mickey Reichel Auction Center

1 Mile North of I-70 on Hwy. 5, Exit 101, Boonville, Missouri • 20 Miles West of Columbia, MO on I-70

Preview Friday 12 p.m. - 5 p.m. and 7:30 a.m. - 9:00 a.m. Day of Auction

TERMS: Cash or Good Check, VISA and MasterCard accepted.

3% Clerking Fee on all purchases except for payment of cash or check. Proper I.D. required.



WEB SITE: www.yourauctionpage.com/reichel

ABSENTEE BID POLICY:

WRITE IN BIDS: If you are unable to attend the auction, we will be happy to accept absentee bids which must be received by THURSDAY, SEPTEMBER 11, 2003. Don't Delay. E-Mail: mreichel@undata.com

FOR AUCTION PRICE RESULTS: Send \$3.00 and Large S.A.S.E. to 18350 Hunters Ridge Ct., Boonville, MO 65233-2971

PLEASE NOTE: There is a **\$5 handling charge for each successful bid which will be added to the selling price** for all write-in bids. This is in addition to the cost of postage, insurance and packing. Your write-in bid will be entered just as if you are present and bidding. **Successful bidders will be notified in 1 to 3 days by the auctioneer (so be sure to include your phone number).** Direct mail bids to Auctioneer **Mickey Reichel, 18350 Hunters Ridge Ct., Boonville, MO 65233-2971.** Terms: Cash or Check accepted with proper I.D. and Social Security Number and References. Announcements made day of the auction supercede all printed material. Not Responsible for Accidents or Sold Items.

No return on any items once they leave the Auction Center (No Exceptions).****

Call for additional information: 660-882-5292 days or 660-882-5283 evenings before 9:00 p.m.

FAX: 660-882-5292 (evening hours start FAX transmission after beep)

MAIL BIDS: Items are bid on in perfect condition with average or above iridescence OR as listed in the brochures. Bids will not be carried out when damage on an item has been found during the auction.

PEOPLE PRESENT AT AUCTION ARE RESPONSIBLE FOR FINDING ANY PINHEADS, WEAR, SPOTTINESS, MANUFACTURER'S DEFECTS OR ANY OTHER MINOR FLAWS, ETC. *****

NOTE: Read each line, as we have accentuated the type of no particular piece, all are special.

Make Reservations EARLY at one of these local motels:

Days Inn: 660-882-8624 • Comfort Inn: 660-882-5317 • Super 8: 660-882-2900 • Holiday Inn: 660-882-6882

Auction Consists of Rarity, Great Irid. and Variety

THANK YOU FOR ATTENDING TODAY

1. M - Fenton Blackberry Block Tumbler - Soft Satin
2. B - Fenton Blackberry Block Tumbler
3. M - Fenton Blackberry Block Tumbler - Darker Irid Than #1
4. G - Scarce Fenton Paneled Dandelion Tumbler - Extra Nice
5. M - Scarce Fenton Paneled Dandelion Tumbler - Very Nice
6. M - Rare Dugan Harvest Flower Tumbler - Above Average
7. M - Block and Arches (?) 3-5/8" Tall Juice Glass
8. Gorgeous M - N Pretty Panels Enameled Tumbler - **WOW!**
9. B - Fenton Orange Tree Ftd. Tumbler - Soft and Pretty Color
10. B - Fenton Orange Tree Ftd. Tumbler - Dark and Pretty
11. M - Fenton Orange Tree Ftd. Tumbler - Rich and Dark Color
12. A - Fenton Butterfly and Fern Tumbler - Scarce Base Color
13. A - Fenton Butterfly and Fern Vt. Tumbler - Scarce Base Color
14. M - Fenton Butterfly and Fern Vt. Tumbler - Outstanding Example
15. M - Fenton Butterfly and Fern Tumbler - Also Outstanding
16. Soft B - Fenton Butterfly and Fern Vt. Tumbler - Superb Iridescence
17. G - Fenton Butterfly and Fern Tumbler - Another Winner
18. B - Fenton Orange Tree Scroll Tumbler - Multi Electric
19. M - Scarce Fenton Milady Tumbler
20. B - Fenton Milady Tumbler - Small Base Bruise, But Scarce
21. Crystal Iridized - Duchess Enameled (?) 3-1/2" Bulbous Juice Glass
22. M - Pumpkin Orange Tree Orchard Tumbler
23. B - Orange Tree Orchard Tumbler - Silvery Irid.
24. Red Amberina Stretch - Chesterfield 5-1/4" Tumbler - Very Desirable
25. W - N Grape Arbor Tumbler - Marie Nick
26. P - Dugan Heavy Iris Tumbler - Beautiful Pattern
27. M - Dugan Lattice and Daisy Tumblers - 3 x \$
28. B - Fenton Blackberry Block Tumblers - 6 x \$ - Beautifully Matched Irid.
29. Radium M - Dugan Stork and Rushes with Lattice Band - 6 x \$ - Well Matched

30. Amber Base to Red Top - Fenton 12" Plume Panels Vase - Exceptional and Very, Very Rare
31. M - Imp. 7-1/4" Ripple Vase - Loaded with Pinks
32. Fantastic Pastel Smoke - Imp. 8-1/2" Squatty Ripple Vase - 3-1/4" Base, 5-1/2" Top
33. Lav. - Imp. 8-1/4" Squatty Ripple Vase - 3-1/4" Base, 5-1/2" Top - Fabulous Irid.
34. Amber - Imp. 11-1/2" Ripple Vase - Amber At Its Finest! - 3-1/4" Base, 5" Top
35. Soft M - N 6" Tornado Vase - Small Base Chip
36. **G - N Rare 7-1/3" Drapery Vase with Super Alaskan Effect - Factory Base Flaw**
37. P - N 6-3/4" Squatty Tree Trunk Vase - 3-1/2" Base, 5" Top - Top of the Line
38. G - N 6-1/4" Squatty Tree Trunk Vase - 3-1/2" Base, 5" Top - Scarce Color
39. Light Radium M - Dugan Mary Ann Vase - Old and Genuine
40. Excellent M - Jenkins 10-1/4" Cut Flowers Cylinder Vase - Awesome Example
41. P - Dugan Electric 9" Lattice and Points Vase - Mold Dimple In Base, But It Sits Flat
42. Dark P - Dugan 7" Lined Lattice Vase - Multi Electric Gem
43. Lovely W - N Daisy and Drape Vase - Cupped In Top
44. P - N 13-1/4" Mid-Size Tree Trunk Funeral Vase - Radium Electric Dandy
45. Crystal - Brockwitz/EDA 7-1/2" Rose Garden Pillow Vase
46. P - Dugan 4", CRE, Flared Twigs Vase - Sweet Little Rarity
47. M - Australian 10-1/2" Gum Tips Vt. Vase - Neat Flared Opening
48. M - Australian 8-1/2" Mid-Size Gum Tips Vase - Loaded with Irid.
49. M - Imp. 11-3/4" Big Ripple Mid-Size Vase - 4" Base, 5-3/4" Opening
50. Ultra Rare Dark Red - Fenton Two Flowers 5-1/2" Spat Ftd. Rose Bowl - Dark Purple Feet - What A Mix
51. Red Amberina - Fenton 6-1/4" Ruffled Sailboats Bowl
52. M - Fenton 5-1/2" ICS Sailboats Bowl - Very Scarce Shape
53. M - Fenton Northern Star 6" Plate with 2 Sides Up - Nifty Piece
54. Pastel M - Fenton Kittens 4-1/2" Plate - Pretty
55. Flashed M - Sword and Circle 3-1/2" Tall Juice Glass
56. Flashed M - Enameled "Souvenir of Niagara Falls" Juice Glass
57. Flashed M - Etched Floral Tumble Up Set - Complete
58. Super Pastel M - Fenton 8" ICS Holly Bowl - Prettier Than A Speckled Pup!
59. Rare Amber - Fenton Small Rib Spittoon Whimsey - WOW!
60. Rich Amber - Imp. Grape Ruffled Compote - Super Pinks
61. Pastel Smoke - Imp. Star Medallion Goblet - Hard to Find
62. M - Imp. Star and File Rosebowl with Outstanding Iridescence
63. Flashed M - 3-1/2" Collar Base Etched Floral Juice Glass
64. M Flashed - Walt Disney Co. "Winnie The Pooh" Stemmed Goblet
65. Flashed M - Lg. Kerosene Lamp - No Burner
66. M - 8" Imp. Zipper Loop Lamp - Always In Demand
67. Flashed M - Water Glass (5" Tall) Masonic "Kena" Cloth Label
68. Unusual Amber Smoke - Dugan Peach and Pear Banana Bowl - Really Neat
69. Blue Opal - N Poinsettia Interior Tumbler - Non-Iridized
70. Scarce M - Dugan Constellation Ruffled Compote - Prime Quality!
71. Pastel M - Mlbg. 10-1/2", 6 Ruffle Rosalind Bowl - Satin Beauty

72. Flashed M - Blue Ring (Czech) Cordial Set - Decanter w/Stopper and 4 Shot Glasses
73. G - Brocaded Roses 10-1/2" Center Handle Sandwich Tray - Hot Item
74. B - Fenton Peacock Tail 8" ICS Bowl - Magnificent Electric Gem
75. M - Fenton 6-1/2", ICS Peacock and Dahlia Bowl - Scarce Shape & Nice
76. M - Fenton Lotus and Thistle 7" ICS Bowl - Very Undervalued
77. M - Fenton 6-1/2" Pine Cone 12-Sided Plate - Nice Coloration
78. Deep G - Fenton 5-1/2", ICS Pine Cone Bowl
79. M - Fenton Water Lily 6", Ball Ftd. Berry Bowl - Just Dandy
80. Rich G - Fenton Water Lily 6", Ball Ftd. Berry Bowl - Great Color
81. B - Fenton 6" Tri-Corner Vintage (Grape) Plate
82. M - Fenton 6-3/4", Ruffled Lions Bowl - Detailed and Colorful
83. Fantastic M - Fenton 7-3/4" Fully Detailed Lions Plate - Minor Nick on Back of One Point - Super Color
84. Rare Sapphire - Fenton 6", 6 Ruffle, Ball-Ftd. Little Fishes Bowl - Great Detail
85. Pumpkin M - Fenton 9-3/4", 8 Ruffle Ball-Ftd. Little Rushes Bowl - Stunning
86. SCARCE M - Fenton Mirrored Lotus 7", 6 Ruffle Bowl - Fabulous Find

OUTSTANDING COLLECTION OF FENTON HOLLY PIECES
ALL TOP OF THE LINE

87. B - Fenton Holly 6", 6 Ruffle Hat - Blues & Pinks Galore
88. G - Fenton Holly 6", 6 Ruffle Hat - Tough Color to Find
89. A - Fenton Holly 5-3/4", 6 Ruffle Hat - Scarce 8-Sided Base
90. Electric Blue - Fenton Holly 8-1/2", ICS Bowl - Killer Color!
91. Pastel M - Fenton Holly 9-1/4", Low 6-Ruffle Bowl - Lush Blues & Pinks
92. Teal Green - Fenton Holly 9", 8 Ruffle Bowl - Oh My!
93. Frosty W - Fenton Holly 9-1/4", 6 Ruffle Bowl - Yellows and Blues
94. Sapphire - Fenton Holly 6-1/2", JIP, CRE Hat - Rare Base Glass Color
95. Electric B - Fenton Holly 6-1/2", JIP, CRE Hat - Lavish Irid.
96. Pumpkin M - Fenton Holly 6-1/2", JIP, CRE Hat - Pinks and More Pinks
97. Scarce G - Fenton Holly 6", JIP, CRE, Hat
98. G - Fenton Holly 8-1/4" ICS Bowl - Green and Pink Irid.
99. Rich M - Fenton Holly 9-1/4" Low 8-Ruffle Bowl
100. Awesome B - Fenton Holly 9-3/4" Flat Plate - Blues, Fushias, The Works
101. Great M - Fenton Holly 9-1/2" Plate
102. Rare G - Fenton Holly 9-1/2" Plate - Very Tough To Find and Nice
103. Super V - Fenton Holly 9-1/2" Plate - Loaded with Color
104. P - Dugan 8" Holly and Berry Ruffled Bowl - Multi Electric
105. PO - 7", 7-Ruffle Holly and Berry Nappy - Lots of Opal
106. Deep P - Dugan 6" Tri-Corner Holly and Berry Nappy - Super, Super Electric
107. M - Dugan 6-1/4" Tri-Corner Holly and Berry Nappy - Actually Quite Scarce
108. P - Dugan S-Repeat Creamer Whimsey From Punch Cup - Kinda Cool!
109. P - Dugan 6-3/4", 8 Ruffle Bells and Beads Bowl - Stretchy Purples & Greens
110. Dugan Blue - 9", Low 10-Ruffle Apple Blossom Twigs Bowl/Plate?
111. M - Dugan Beaded Shell Butter Dish w/Lid - Outstanding Design, Rarely Seen

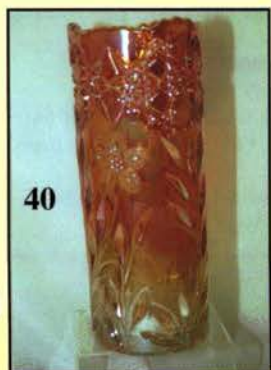
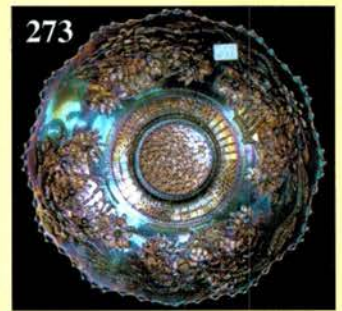
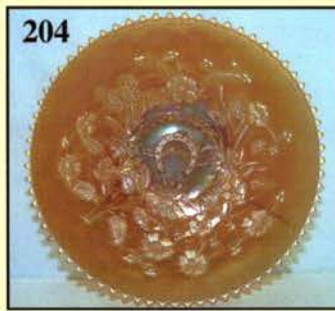
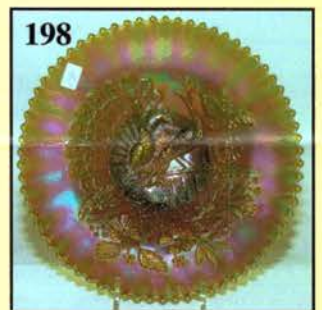
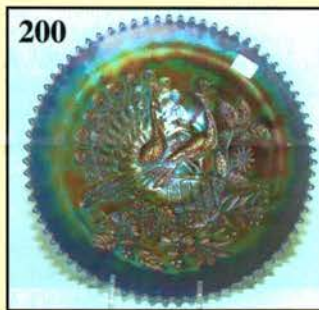
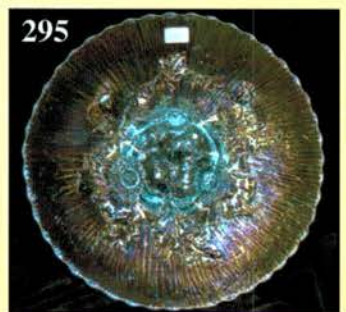
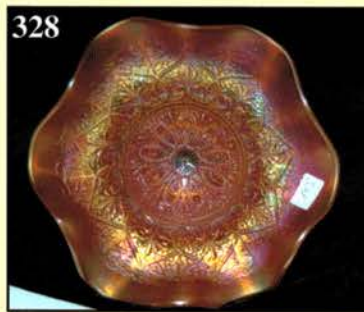
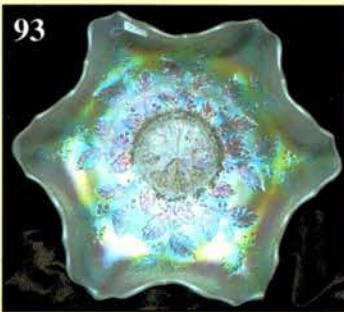
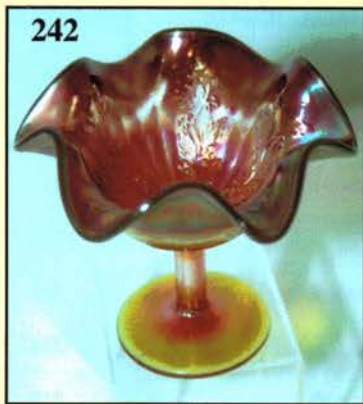
- _____ 112. **Monster Purple - Dugan 10-1/2" Wishbone and Spades Multi Electric Chop Plate**
- _____ 113. **Scarce P - Dugan Cherries 9-1/4", 6 Ruffle Collar Base Bowl - Jewelled Heart Ext.**
- _____ 114. Electric Smoke - Imp. Grape 10" Rd., Flared Collar Base Mater Bowl
- _____ 115. P - Imp. Scarce Windmill 8", 8 Ruffle Bowl - Gorgeous Electric Blues
- _____ 116. **P - Imp. Double Dutch 8-1/2", Rd., Flared, Ftd. Bowl - Delightful Beauty - Rare**
- _____ 117. P - Imp. 6" 8 Ruffle Scroll Embossed Bowl - File Ext. - They Don't Come Any Nicer
- _____ 118. **P - Imp. Lustre Rose 9-1/2", Low ICS, Ftd. Whimsey Bowl - Unbelievably Beautiful and Rare**
- _____ 119. Elec. P - Imp. Lustre Rose Sugar Bowl - No Lid, But Still Outstanding
- _____ 120. M - Imp. Star and File Decanter w/Stopper
- _____ 121. M - Imp. Star and File Wine Glasses - 3 x \$
- _____ 122. **Pumpkin M - Imp. Poinsettia Milk Pitcher - Mouth Watering Irid.**
- _____ 123. Electric P - Imp. Grape Wine Decanter - No Stopper
- _____ 124. **P - Imp. Grape Carafe - Show Stopping Multi Electric Jewel!**
- _____ 125. **Rich, Dark Smoke - Imp. Twins 6-1/2" Ruffled Bowl - Whew!**
- _____ 126. **Rare Blue - Imp. Twins 6-1/2" Ruffled Bowl - Find Another**
- _____ 127. Beautiful M - Imps. Twins 6-1/4", 6 Scallop Bowl - Lots of Pink
- _____ 128. **P - Imp. Grape Super Decanter w/Six Wines - Don't Miss Out On This One!**
- _____ 129. P - Imp. Diamond Lace Water Pitcher - Imperial Irid. At Its Best
- _____ 130. **Clambroth - Imp. Chesterfield 8-3/4" Tankard Water Pitcher - RARE**
- _____ 131. Clambroth - Imp. Flute or Arched Panels Water Pitcher - Also A Rarity
- _____ 132. **Frosty W - N Grape Arbor Tankard Water Pitcher - Super Stretchy**
- _____ 133. M - Floral and Grape Banded Water Pitcher - Heat Flash In Handle
- _____ 134. M - Fenton Inverted Coin Dot Pitcher - CRE Top - Better Example
- _____ 135. M - Fenton Bulbous Enameled Lotus Pitcher - Drapery Int.
- _____ 136. **P - N Grape and Cable Water Pitcher - Top Notch Piece**
- _____ 137. P - N Grape and Cable Tumbler - Choice A, B or C
- _____ 138. **M - U.S. Glass Rising Sun Juice Pitcher - Seldom Offered**
- _____ 139. **M - Australian 9-1/2", 12 Ruffle Shrike Bowl - Nice Radium**
- _____ 140. M - Australian 5-1/2", 12 Ruffle Shrike Berry Bowl - Also Nice
- _____ 141. **BA - Australian 9-1/2", 12 Ruffle Shrike Berry Bowl**
- _____ 142. BA - Australian 5-3/4", 8 Ruffle Shrike Bowl - Electric Center
- _____ 143. BA - Australian 9-1/2", 16 Ruffle Kangaroo On Branch Bowl - Great
- _____ 144. BA - Australian 9-1/2", 16 Ruffle Swan Bowl w/Registration #
- _____ 144B. Australian Crystal/Golden Pansies - 8" Rd. Master Berry w/4-4-1/2" Rd. Berry Bowls
- _____ 145. M - Australian 9-1/4", 16 Ruffle Swan Bowl w/Registration #
- _____ 146. M - Australian 9-1/2", 16 Ruffle Kangaroo On Branch Bowl
- _____ 147. M - N Peacock at Fountain 7 pc. Water Set
- _____ 148. M - N Peacock at Fountain 4 pc. Table Set - Base Crack In Cream Pitcher
- _____ 149. M - N Peacock at Fountain 9" Master Berry w/6 Matching Sm. Berry Bowls
- _____ 150. P - N Grape and Cable Thumbprint 9" Master Bowl w/4-5" Berry Bowls
- _____ 151. Beautiful P - N Grape and Cable Sweetmeat with Lid
- _____ 152. **Super M - N 10-3/4" Grape and Cable Ftd. Fruit Bowl - 5-3/8" Tall - An Eyefull of Pinks**
- _____ 153. **P - N 10-3/4" Grape and Cable Ftd. Fruit Bowl - 5-1/4" Tall - Fantastic Irid.**
- _____ 154. A - N 6-1/2" Grape and Cable 2 Sides Up Card Tray Plate - Scarce Beauty
- _____ 155. **P - N 8-3/4", PCE Grape and Cable Bowl - BW Ext. - Extra Nice**
- _____ 156. G - N 9", PCE Grape and Cable Bowl - BW Ext. - Great Find
- _____ 157. **P - N Outstanding Grape and Cable Dresser Tray - Blues, Purples, Greens, Golds**
- _____ 158. **P - N Grape and Cable Cologne Bottle w/Stopper - Oh So Fine**
- _____ 159. **P - N Grape and Cable Powder Jar w/Lid - Top of the Line**
- _____ 159A. Deep P - N Grape and Cable Hatpin Holder - Lots of Greens, Purples, Yellows
- _____ 160. BA - N Stippled Grape and Cable Bonbon - Tip Chipped
- _____ 161. Dark B - Stippled Grape and Cable Bonbon - Scarce Color
- _____ 162. M - N 9" Grape and Cable Vt. Plate - BW Ext. - Above Average
- _____ 163. G - N 9" Grape and Cable Plate - Bw Ext. - Always Desirable
- _____ 164. G - N 8-3/4", 8 Ruffle Grape and Cable Bowl - BW Ext. - Very Pretty
- _____ 165. M - N 9", PCE Grape and Cable Bowl - BW Ext.
- _____ 166. M - Fenton Butterfly Bonbon - 2 Sides Up - Pinks and Blues
- _____ 167. B - Fenton Pond Lily Bonbon - 2 Sides Up - Nice Example
- _____ 168. G - Fenton 8-1/2", 3 in 1 Edge Thistle Bowl
- _____ 169. M - Dugan Pony 8-3/4", 6 Ruffle Bowl - Pink Highlights
- _____ 170. **A - Dugan Pony 8-3/4", 6 Ruffle Bowl - Super Radium w/Pinks**
- _____ 171. **Radium M - Dugan Brooklyn Bridge 10 Ruffle, 8-1/2" Bowl**
- _____ 172. **B - Fenton Orange Tree Punch Bowl and Base - Ruffled - Superb Example**
- _____ 172A. B - Fenton Orange Tree Punch Cup
- _____ 173. **Pumpkin M - Fenton Orange Tree Punch Bowl, Base and Six Cups - Pinks!**
- _____ 174. **Fabulous M - N Memphis Punch Bowl, Base, Six Cups - Pinks Galore**
- _____ 175. **M - Imp. 474 Lg. Scalloped Punch Bowl and Base - Radium Beauty**
- _____ 176. **Pumpkin M - N Grape and Gothic Arches Water Pitcher - Hot Pinks**
- _____ 177. **Pumpkin M - Fenton Persian Medallion/Grape and Cable Ftd. Orange Bowl**
- _____ 178. **G - Grape and Cable 10" Ftd. Fruit Bowl - 5-1/4" Tall - Plain Int.**
- _____ 179. P - Dugan Wreathed Cherry Lg. Berry Bowl (Banana Shape) - Neat, Big Bowl
- _____ 180. **Pumpkin M - Fenton Two Flowers Ball Ftd., 9", Deep Fruit Bowl - Alive with Color!**
- _____ 181. M - Fenton Thistle Banana Boat - Waterlily and Cattail Ext. - Overlooked Item
- _____ 182. **Mammoth B - Fenton Rustic Lg. Funeral Vase - 20" Back Height, 16" Front - Super Electric**
- _____ 183. **Red - Peacock Lamp - Rare and Outstanding**
- _____ 184. **Purple - Peacock Lamp - Another Rare Find**
- _____ 184A. G - Fenton 8", ICS Peacock At Urn Bowl - Bearded Berry Ext. - Scarce Shape and Color
- _____ 185. M - Fenton 8", ICS Peacock at Urn Bowl - Bearded Berry Ext. - Lush Pink Irid.
- _____ 186. B - Fenton 9", Sq. 8 Ruffle Peacock at Urn Bowl - Multi Electric Winner
- _____ 187. M - Fenton 9", Sq. 8 Ruffle Peacock at Urn Bowl - Lightly Iridized

188. Scarce A - Fenton 9" Low 8 Ruffle Peacock at Urn Bowl - Beautiful Example
189. M - Fenton 8-3/4", Scarce Six Ruffle Peacock at Urn Bowl - Blues and Pinks
190. M - Fenton 9-1/4" Peacock at Urn Plate - Pinks and Golds
191. B - Fenton 9-1/2" Flat Peacock at Urn Plate - Super Electric
192. P - N 8 Ruffle Peacocks Bowl - Blues, Purples and Golds - Rib Ext.
193. Rich M - N 8 Ruffle Peacocks Bowl - Pink, Green and Yellow - Rib Ext.
194. Fantastic A - N PCE Peacocks Bowl - Multi Color Masterpiece
195. M - N PCE Peacocks Bowl - Beautiful Pair (of Birds)
196. ELECTRIC BLUE - N PCE Peacocks Bowl
197. Ice B - N Peacocks 8-3/4" Plate - Rare Smooth Ext. on this Pastel Plate
198. Rare B - N Peacocks 9" Plate - Even Irid w/Greens and Pinks - Rib Ext.
199. Pumpkin M - N 9" Peacocks Plate - Rich Pink Colors
200. Elec. B - N 9" Peacocks Plate - Highly Desirable
201. A - N Peacocks 9" Plate - Multi Electric - Rib Ext.
202. Dark B - N Peacocks 9" Plate - Stippled! - Highly Sought After - Multi-Electric Prize
203. True Pastel M - N Stippled 9-1/4" Flat Peacocks Plate - Fantastic Blues and Yellows
204. Scarce M - N 9" Good Luck Variant Plate - BW Ext. - Lots of Pinks
205. A - Fenton 9-1/4", Sq. 8 Ruffle Chrysanthemum/Windmill Bowl - Collar Base w/Unbeatable Iridescence - Scarce
206. Custard - N 7-3/8" Stippled Three Fruits Medallion Plate - Non-Iridized
207. Emerald G - Mlbg. 6-1/2" Holly Sprig ICS Bowl
208. Electric Radium P - Mlbg. 10" ICS Fleur De Lis Bowl - Rare Beauty
209. G - Mlbg. 10-1/2" Ruffled, Crimped Fleur De Lis Bowl - Loaded with Blue Irid.
210. P - Imp. Mini Morning Glory 6" Vase - Electric
211. Super P - Imp Heavy Grape Nappy
212. M - Handpainted Lamp Shades w/Country Scenes - Choice A or B
213. Lime G Opal - N Leaf Beads Rosebowl - Crack In Base - Super Rarity
- 213A. Lime Ice G - N ftd., Ruffled Daisy and Plume Candy Dish - Blackberry Int.
214. G - Mlbg. 9-1/2", 3 in 1 Edge Rays and Ribbon Bowl - Radium Silver Irid.
215. Dark M - Mlbg. 10", 6 Ruffle Primrose Bowl - Satin at Its Finest
216. A - Mlbg. 8-1/2", 6 Ruffle Radium Grape Wreath Bowl - Multistar Center
217. A - Mlbg. 6", Low Round Peacock Bowl
218. G - Mlbg. 8-3/4", 3 in 1 Edge Seaweed Bowl - Gorgeous
219. G - Mlbg. 10-1/4", 3 in 1 Edge Seaweed Bowl - Great Pattern and Size
220. M - Mlbg. 9-1/2", 6 Ruffle Radium Rays and Ribbons Bowl
221. P - Mlbg. Square, Radium 9-3/4" Strawberry Wreath Bowl
222. Rich M - Mlbg. Hanging Cherries Spooner - Superior Example
223. Nice M - Mlbg. 6", 6 Ruffle Blackberry Wreath Bowl - Pink Satin
224. P - Mlbg. 5-3/4" Radium, ICS Blackberry Wreath Bowl - Multi Color Dandy
225. G - Mlbg. 6-1/2", 6 Ruffle Radium Blackberry Wreath Bowl - Also Nice

226. M - Mlbg. 5-3/4", 3 in 1 Edge Radium Blackberry Wreath Bowl - Little Beauty
227. Pastel M - Mlbg. 6", CRE Radium Blackberry Wreath Bowl - Where Are My Shades?
228. P - Mlbg. 5-3/4" Low Scalloped Grape Wreath Bowl - Clover & Feather Center - Radium Rainbow of Colors
229. M - Mlbg. 6-3/4", 3 in 1 Edge Grape Wreath Bowl - Feathered Leaf Center - Radium
230. P - Mlbg. 7", 3 in 1 Edge Grape Wreath Bowl - Feathered Leaf Center - Radium
231. Radium A - Mlbg. 6" Holly Sprig Spade Shape Nappy - Burns with Radium Color!
232. Radium G - Mlbg. Holly Sprig Deep Bonbon (Same Shape As Night Stars) - Deep and Nice
233. G - Mlbg. Holly Whirl Tri-Corner Nappy - Loaded w/Satin Blues
234. G - Mlbg. Holly Whirl 6-3/4" Card Tray Bonbon - Satin and Nice
235. Radium P - Mlbg. Holly Whirl Deep Bonbon - Great Shape
236. M - Mlbg. 7" Holly Whirl Card Tray Bonbon - Satin Beauty
237. W - U.S. Glass Cosmos and Cane Covered Sugar - Lavender Irid. - Lid Roughness
238. W - U.S. Glass Cosmos and Cane Creamer - Silver Off Base
239. Honey Amber - U.S. Glass Cosmos and Cane 7-3/4", Deep, Rd. Master Berry Bowl
240. M - Flute (?) Ftd. Creamer - Mkd. "Monroe, Wis." Advertising
241. Fantastic M - Fenton 10-3/4", ICS, Scalloped, Ball Ftd. Stag and Holly Bowl

SECOND GROUPING FROM TREMENDOUS HOLLY COLLECTION

242. Red At Its Best - Fenton Holly Ruffled Compote - Normal Amberina Base
243. Dark G - Fenton Holly 6 Ruffle Compote - Nice
244. Deep B - Fenton Holly Goblet Shape Compote - Little Dandy
245. M - Fenton Holly Goblet Shape Compote - Extra Nice
246. M - Fenton Holly Scarce Two Sides Up Compote - A Beauty
247. Lime Vas. - Fenton Holly 6 Ruffle Compote - M. Overlay
248. Yellow Vas. - Fenton Holly 6 Ruffle Compote - M. Overlay
249. Rare Lav. - Fenton Holly 6 Ruffle Compote - So Nice
250. Pastel B - Fenton Holly 6 Ruffle Compote - M. Overlay - WOW!
251. Cobalt B - Fenton Holly 6 Ruffle Compote - Extra Colorful
252. G - Fenton Holly Low Six Ruffle Compote - Something Special
253. Rich M - Fenton Holly 6 Ruffle Compote - Dark Beauty
254. M - Fenton Holly Low Six Ruffle, CRE Compote - Neat Shape
255. Lime Vas. - Fenton Holly 6 Ruffle Compote - Non-Iridized - Glows
256. A - Fenton Birds and Cherries Ruffled Compote - First Rate Piece
257. B - Fenton Peacock At Urn 5-3/8" Rd., Flared Compote - Truly Different
258. M - Fenton Peacock At Urn 6", 6 Ruffle Compote - Sweet Color
259. Rare W - Fenton Miniature Blackberry Compote - Base Chips, But Beautiful
260. G - Fenton Miniature Blackberry Compote - Also Rare, Minor Base Flaws
261. Scarce A - Fenton Miniature Blackberry Compote - Chips On Base, But A Tough Find
262. M - Fenton Miniature Blackberry Absentee Variant Compote (No Berries)
263. Flashed M - 5-1/2" Geometric Pattern 2 Sides Up Plate - Unknown Pattern Name



264. Stretchy W - Dugan Six Petals 8-3/8", 6 Ruffle Bowl - Sparkling Color
265. BA (or Oxblood) - Dugan Six Petals 7-1/2" Tri-Corner Bowl - Rare Shape, Great Color
266. Lime Vas. - Dugan 7-1/2", 6 Ruffle, CRE Venetian Bowl - Glows!
267. M - Fenton Persian Medallion 8-1/2" ICS Bowl - Bearded Berry Ext.
268. Radium Elec. M - Imp. 9" Open Rose Plate
269. Clambroth - Fenton 9" Leaf Chain Plate - Very Underrated
270. **Fantastic G - Fenton 9" Thistle Plate - Another Top Piece In This Sale**
271. **Showy Marigold - Fenton Illinois Soldiers and Sailors Home Plate - Advertising Is Hot - Extra Nice**
272. **Stunning B - Fenton Illinois Soldiers and Sailors Home Plate - Another Hot One**
273. W - Fenton 9-1/2" Orange Tree Plate - A Pastel Screamer!
274. G - Fenton 8-3/4", 8 Ruffle Beautiful Lotus and Grape Bowl
275. Extra Nice G - Fenton 8-3/4", 6 Ruffle Captive Rose Bowl
276. P - Imp. Grape 9" Low Ruffled Bowl or Plate - Another Screamer
277. Ice Lavender - Imp. Grape 9-1/4" Low Ruffled Bowl or Plate - Exquisite
278. **A - Fenton 9-1/4" Captive Rose Plate - Tops the Charts for Color**
279. **P - Imp. 9" Scroll Embossed Plate - One of Imperials Finest**
280. **P - N 9" Three Fruits Plate - Smooth Ext. - Outstanding Iridescence**
281. **Rare G - N 8" Fruits and Flowers 2-Sides Up Plate - Very Desirable**
282. **Elec. P - N 7-1/2" Wild Strawberry Handgrip plate - Scarce, Scarce, Scarce**
283. **P - N 5-7/8" Peacock at Urn Low Round Bowl/Plate - 1-1/4" Off Table**
284. **Pumpkin M - N 10-1/4" ICS Grape and Cable Master Bowl - Wicked Pinks and Blues**
285. P - N Singing Birds Mug - Powerful Electric Irid.
286. **Rare Lav. - N Singing Birds Mug - Beautifully Iridized**
287. M - Fenton Scarce Orange Tree Goblet (With Band)
288. M - Fenton Orange Tree Vt. Goblet (No Band) - Dark and Nice
289. **Pumpkin M - Fenton Orange Tree Shaving Mug**
290. **Pumpkin M - N Stippled Dandelion Mug - Many Pinks**
291. Beautiful M - N 9" Stippled Three Fruits Plate - Rib Ext.
292. **Dark M - N PCE Hearts and Flowers Bowl - Seldom Encountered In This Shape**
293. P - N Daisy and Plume Ftd. Rosebowl - Stippled Rays Int. - Real Nice One
294. **M - N 9-1/4" Poppy Show Plate - Blues and Pinks Everywhere**
295. **Rare Ice B - N 9-1/2" Poppy Show Plate - Pinks, Blues and Golds**
296. **Dark M - N 9-1/4" Rose Show Plate - Top Of The Line Example**
297. M - N Ruffled Rose Show Bowl - Another Beauty
298. G - N 8 Ruffle Nippon Bowl - Scarce Color
299. **Pumpkin M - N 8 Ruffle Poppy Show Bowl - Dripping with Pinks**
300. **Ice G - N Ruffled Rose Show Bowl - Lots of Blue Pastels**
301. P - N Grape and Cable 9" Plate - BW Ext. - Always In Demand
302. **P - N 8-1/2" Ftd. Wishbone Plate - Very, Very, Pretty**
303. P - N Ruffled, Ftd. Poinsettia and Lattice Bowl - Multi Electric
304. **Show Stopping Elec. B - N Ruffled, Stippled Good Luck Bowl - Makes A Statement!**
305. G - N Grape and Cable Tumblers - 2 x \$
306. **M - Jain 6" Elephant Vase - Great Example**
307. PO - Nautilus Creamer - Top Notch Example
308. M - Imp. Diamond and Sunburst Flared Top Wines - 5 x \$
309. M - Imp. Octagon Wine - Beautiful
310. Elec. P - Imp. Grape Wine Decanter - Has Stopper - Hot Piece!
311. **Radium G - Mlbg. 9-3/4", 6 Ruffle Primrose Bowl - A Pretty One**
312. **Radium P - Mlbg. 9-1/2" Rd., Flared Peacock Master Berry - Sharp Strike, Excellent Color**
313. **Pastel Ice G Bas. - Fenton Enameled Shasta Daisy/Zig Zag Pitcher - Rare**
314. **M - U.S. Glass Diamond and Daisy Cut Pitcher and Eight(!) Tumblers - One Heck Of A Set**
315. M - Fenton 7-1/4" Vintage (Grape) Bowl - Horlacher Advertising On Base - Extremely Undervalued
316. **B - Fenton 7-1/4" Elks 1911 Atlantic City Plate - Advertising Is On Fire!**
317. **M - Fenton 6-1/2" Flat Sailboats Plate - Better Example Of This Dandy Little Rarity!**
318. **M - Fenton 6-3/8" Peacock Tail Plate - Very In Demand!**
319. **M - Fenton 9", 8 Ruffle Good Luck Bowl - Minor Rim Nick, Still Rare and Beautiful**
320. **Awesome B - Fenton 9-1/4", 8 Ruffle, Ftd. Panther Master Bowl - Electric Winner**
321. BA - Australian 9-3/4", 16 Ruffle Kangaroo On Branch Bowl
322. BA - Australian 9", 16 Ruffle Swan Bowl - With Registration # - Radium Delight
323. Pumpkin M - N Beaded Cable Rosebowl - Pervasive Pinks!
324. AO - N Drapery Rosebowl - Pink Highlights
325. **Ice G - N Rd. Bushel Basket - Scarce Color**
326. AO - N Rd. Bushel Basket - Lots of Opal in Handles
327. **Rare Ice G - N Hearts and Flowers Ruffled Compote - Blue Highlights**
328. **Pumpkin M - N Hearts and Flowers Ruffled Compote**
329. Smoke - Imp. Smooth Panels 6-1/4" Rosebowl - Delightful Pastel Irid.
330. W - N Peach Spooner - Gold Trim - Very Nice
331. **P - N Peacock At Fountain Spooner - Super Electric**
332. **P - N Peacock At Fountain Creamer - Super Electric - Nice Match**
333. M - Dugan Wreathed Cherry Creamer - Superior Example
334. B - N Grape and Gothic Arches Spooner
335. M - Fenton 5-3/4" Waterlily and Cattails Cupped Rim Plate
336. Flashed M - 6" Long Hatchet - Mkd. "Souv. Niagara Falls"
337. **Scarce A - Fenton 9", Sq. 8 Ruffle, Collar Base Peacock and Grape Bowl - Just Grand**
338. **Sapphire - Fenton 5-1/2" 2-Row, O.E. Ruffled Basket**
339. M - Fenton 2 Row, O.E. Basket - Adv. John Brand Furniture - 2 Sides Up
340. Dark G - Fenton "Plain Jane" Stemmed Whimsey Cuspidor - Very Attractive
341. M - Fenton Persian Medallion Bonbon
342. **Custard - N Stippled Grape and Cable Bonbon - Nutmeg - Non Irid.**
343. Custard - Fenton Prayer Rug Bonbon - Non Iridized
344. Pumpkin M - Imp. Heavy Grape 9" Rd., Flared Bowl
345. G - N 10", Collar Base, 8 Ruffle Wishbone Bowl - BW Ext.
346. **Super M - Fenton 9", 8 Ruffle, Ftd. Panther Master Berry Bowl**
347. **Scarce A - Fenton 8-1/4", 3 in 1 Edge Concord Bowl - Elegant Beauty**
348. Dark B - Fenton 8", 6 Ruffle Orange Tree Bowl - Trunk Center
349. G - N Acorn Burrs Punch Cup
350. A - Dugan Beaded Shell Mug
351. **Teal Green - Imp. Grape Decanter w/Stopper - Base Glows**

- _____ 352. Florentine Green Vas. - 10-1/4" Flute Vase - Non-Iridized, Glows!
- _____ 353. P - N 10-1/2" Thin Rib Vase - Wonderfully Iridized
- _____ 354. BA - Top of the Morn Hatpin
- _____ 355. BA - Big Butterfly Hatpin
- _____ 356. A - Daisy and Button Look Hatpins - Non Iridized - Choice A or B
- _____ 357. Opaque Pink - Rose Pattern (?) Hatpin
- _____ 358. P - Intaglio Leaf and Floral (?) Hatpin
- _____ 359. W - Rose Pattern (?) Hatpin
- _____ 360. G - N Diamond Point 10-1/4" Vase - Nice Example
- _____ 361. Smoke - Imp. Freefold 11-1/2" Vase
- _____ 362. Rich M - N Colonial 8-1/2" Candlesticks - Pair
- _____ 363. Celeste B - N Concave Diamonds Tumbler
- _____ 364. Pumpkin M - Fenton Waterlily and Cattails Tumbler
- _____ 365. W - N Grape Arbor Tumblers - Choice A, B, C, D, E
- _____ 366. B - Dugan Beaded Stork In Rushes Tumbler - Silvery
- _____ 367. M - N Waterlily and Cattails Tumblers - 6 x \$ - Well Matched
- _____ 368. M - Dugan Lattice and Daisy Tumblers - 6 x \$
- _____ 369. P - Dugan Peacock At Fountain Tumbler
- _____ 370. M - Fenton Orange Tree Mug - 2-1/2" Base
- _____ 371. M - Dugan Maple Leaf Sherbets - 4 x \$
- _____ 372. M - Imp. Fashion Punch Cups - 4 x \$
- _____ 373. Yellow Amber - Westmoreland Corinth 9" Banana Shape Plate - Actually Quite Rare
- _____ 374. Burmese - Fenton JIP Large Poppy Vase - Scarce Limited Edition
- _____ 375. Red - Fenton JIP Large Poppy Vase - Scarce Limited Edition
- _____ 376. Electric B - Fenton JIP Large Poppy Vase - Scarce Limited Edition
- _____ 377. Emerald G - Fenton Ruffled Large Poppy Vase - Scarce Limited Edition
- _____ 378. Topaz Opaque - Fenton Ruffled Large Poppy Vase - Scarce Limited Edition - Glows
- _____ 379. Lavender Opal - Fenton Ruffled Large Poppy Vase - Scarce Limited Edition
- _____ 380. Red - Contemporary 3" Blinko Robert Hansen Vase
- _____ 381. B - Contemporary Michigan Robert Hansen Toothpick Holder
- _____ 382. Sapphire - Contemporary Tree Trunk Robert Hansen Toothpick Holder
- _____ 383. B - Contemporary Daisy and Button Robert Hansen Toothpick Holder
- _____ 384. Red - Contemporary Tree Trunk Robert Hansen Toothpick Holder
- _____ 385. Marigold or Milkglass - Miniature Stein w/Monks - 2" Tall - Different!
- _____ 386. Smoke - Imp. Grape Wine Glass - Scarce
- _____ 387. A - Imp. Diamond and Sunburst Flared Wine Glass
- _____ 388. Ice G - Enameled Shasta Daisy Banded Tumblers - 2 x \$
- _____ 389. Scarce G - Fenton Lotus and Grape Bonbon
- _____ 390. PO - Dugan Ski Star and Compass 8-1/4", Dome Base, Handgrip Plate
- _____ 391. M - Imp. Smooth Panels 4" Rosebowl
- _____ 392. Marigold or Milkglass - 4-3/4" Flared Bowl
- _____ 393. M - Wild Berry Powder Jar - Base Only
- _____ 394. M - Cornucopia 5" Tall Vase
- _____ 395. Clambroth - Imp. 11" Optic and Button Chop Plate
- _____ 396. Fantastic Lav. Smoke - N 8-1/2", 8 Ruffle Three Fruits Bowl - Tip Chipped - Its a Beauty
- _____ 397. P - N Basket of Roses Stippled Bonbon - Tip Chipped
- _____ 398. M - Fenton Kittens Cup - Cracked
- _____ 399. Celeste - Acanthus 10" Plate - ICGA 1995 - Contemporary
- _____ 400. Red - 1990 HOACGA Mug - Base Chip - Contemporary
- _____ 401. B - Fenton Persian Medallion 9-1/2" Plate - Contemporary
- _____ 402. P - ICGA 1971 Paperweight - Contemporary
- _____ 403. M Flashed - Encore 12 oz. Beer Bottle
- _____ 404. M - 4" Long Pig Piggy Bank

NOTE: NEW ADDRESS

For Free Color Catalogs & Information Write:
Mickey Reichel
 18350 Hunters Ridge Ct., Boonville, MO 65233-2971
 or Call: 660-882-5292 days or
 660-882-5283 evenings
 E-mail: mreichel@undata.com

SPECIAL NOTE:

NO SUNDAY CALLS, PLEASE!
 Winning Absentee Bidders will be contacted
 Monday through Wednesday of the week following
 the Auction! Thank You!

NEED QUALITY CARNIVAL GLASS & ANTIQUES

*"We don't want all the Business,
 Just Yours."*

WE DO AUCTIONS RIGHT!!

AUCTION CALENDAR

September 27, 2003
 ANTIQUES ESTATE AUCTION
 at Boonville, Mo. Auction Gallery

October 17-18, 2003
 AIR CAPITAL
 CARNIVAL GLASS CONVENTION
 at Wichita, Kansas

November 15, 2003
 CARNIVAL GLASS COLLECTION
 at Boonville, Mo. Auction Gallery

January 10, 2004
 13TH CARNIVAL GLASS
 NEW YEAR'S EXTRAVAGANZA
 at Boonville, Mo. Auction Gallery

BOOKING FOR 2004 DATES

MICKEY REICHEL
ANTIQUÉ & AUCTION, L.C.
18350 HUNTERS RIDGE CT.
BOONVILLE, MO 65233-2971

PRESORTED
FIRST CLASS MAIL
US POSTAGE PAID
SEDALIA, MO
PERMIT 217

RETURN SERVICE REQUESTED

FIRST CLASS MAIL
SPECIAL INVITATION TO:



7*121*****MIXED AADC 650

LEE MARKLEY

PO BOX 306

MENTONE, IN 46539-0306

