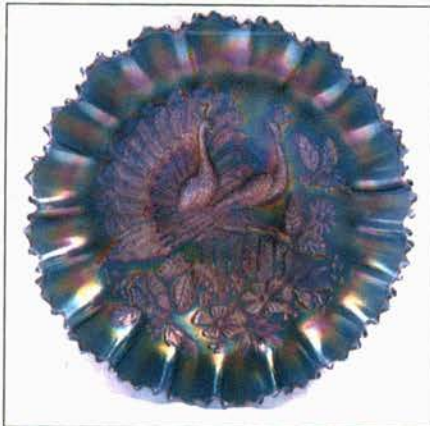


Lot #140



Lot #85



Lot #50



Lot #51

BURNS

AUCTION SERVICE

2003 N.E.C.G.A. Convention Auction

5:30 pm, Saturday, September 6, 2003
(preview: 2:30 pm)

at the

Holiday Inn - Worcester

500 Lincoln St.

Worcester, MA 01605

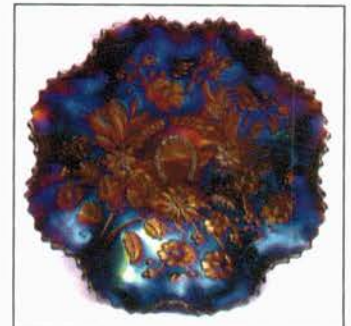
1-508-852-4000

or

1-800-782-7306



Lot #15



Lot #56

Burns Auction Service is pleased to sell at auction, on behalf of the N.E.C.G.A., a great selection of glass from collections around the East, including North Carolina and Florida.

The auction will be held in conjunction with the N.E.C.G.A. Convention and at the end of the Brimfield Flea Market Week (the 2nd thru the 5th). There will be plenty of things to do with the auction being held on Saturday afternoon. Hope we get a chance to see ya there!

The Holiday Inn of Worcester will host the activities. Directions are enclosed and you can make your reservations by calling the motel direct at 1-508-852-4000 or 1-800-782-7306. For further info on the Convention and its activities call Don Dorais at 401-724-4874.

Mail, Email, and phone bids are due by Wednesday, September 3rd, 2003.

Burns Auction Service

Tom Burns
P.O. Box 608
Bath, New York 14810
(607) 776-7942 Cell: 731-9302

Bill Richards
44 Water Street, Poland OH 44514
(330) 757-2001
FAX (330) 757-4917

Bill Richards III
2253 Country Lane
Poland, OH 44514
(330) 755-2620

Mail Bids honored under the following conditions:

1. No deposit required. Bidders will take full responsibility to honor any and all bids we execute for them. Payment in full plus postage and handling required after notification and before we ship any item to them.
2. Items are bid on in perfect condition with average or above average iridescence OR as listed in the brochures. Bids will not be carried out when damage on an item has been found during the auction. **PEOPLE PRESENT AT THE AUCTION ARE RESPONSIBLE FOR FINDING ANY PINHEADS, WEAR, SPOTTINESS, MANUFACTURER'S DEFECTS OR ANY OTHER MINOR FLAWS, ETC.**
3. Successful bidders will be notified by collect call from the auctioneer **SO BE SURE TO INCLUDE PHONE NUMBER.**
4. Phone inquiries about the glass or any other questions are welcome.
5. If you have some other person at the auction bidding for you, they must pay for the item before taking it.
6. Any terms or conditions given the day of the auction will supersede any previously published information.
7. Mail, e-mail, fax and phone bids are due by Wednesday, September 3, 2003

Visit our website at: <http://www.woodsland.com/burnsauction/>

- | | |
|---|--|
| <p>___ 1. Lot (3) Newer items - 1968 ACGA Mug; ICGA Red Pump, Presznick's Museum Mug - Asst Colors (selling as a lot)</p> <p>___ 2. N Singing Birds Flared Handled Mug - Blue (nice color; scarce)</p> <p>___ 3. N Singing Birds Handled Mug - Blue (nice color; scarce)</p> <p>___ 4. N Singing Birds Handled Mug - Purp. (nice color and irid.)</p> <p>___ 5. N SINGING BIRDS HANDLED MUG - GREEN (VERY SCARCE AND ATTRACTIVE)</p> <p>___ 6. N SINGING BIRDS STIPPLED HANDLED MUG - MARI. (VERY SCARCE VARIATION)</p> <p>___ 7. N Singing Birds Handled Mug - Mari. (nice color)</p> <p>___ 8. (2) N Singing Birds Tumblers - Green (nice irid.; selling choice)</p> <p>___ 9. N Oriental Poppy Tumbler - Purp. (nice average color and irid.)</p> <p>___ 10. N Dandelion Tumbler - Purp. (really nice example)</p> <p>___ 11. N G&C Tumbler - Purp.</p> <p>___ 12. N G&C Tumbler - Mari.</p> <p>___ 13. Westmoreland Louisa ftd. Flared Plate - Aqua/Teal (scarce color and shape)</p> <p>___ 14. Fenton Orange Tree Lg. ftd. Ruffled Fruit Bowl - Mari. (nice color)</p> <p>___ 15. N ORIENTAL POPPY 7 PC. TANKARD WATER SET - PURP. (RARE AND VERY DESIRABLE; VERY NICE COLOR AND IRID.; PRETTY WELL MATCHED)</p> <p>___ 16. N ACORN BURR HANDLED WATER PITCHER - PURP. (RARE AND DESIRABLE; NICE AVERAGE COLOR AND IRID.)</p> <p>___ 17. N G&C LG. RUFFLED OPEN COMPOTE - PURP. (RARE AND VERY DESIRABLE; SUPER COLOR AND IRID.)</p> <p>___ 18. N G&C 7 PC. WATER SET - GREEN (RARE COLOR FOR THIS SET; NICE)</p> <p>___ 19. N G&C VARIANT STIPPLED PLATE WITH OLD ROSE DISTILLERY ADV. AND RIBBED EXT. - GREEN (RARE AND VERY DESIRABLE; SUPER IRID. AND COLOR)</p> <p>___ 20. N PEACOCK AT THE FOUNTAIN 7 PC. BERRY SET - ICE BLUE (VERY RARE AND UNDER VALUED SET; PERFECT AND WELL MATCHED)</p> <p>___ 21. N PEACOCK AT THE FOUNTAIN FTD. RUFFLED FRUIT BOWL - PURP. (RARE AND DESIRABLE; NICE DARK SATINY HIGHLIGHTS)</p> | <p>___ 22. N TREE TRUNK STANDARD SWUNG VASE - ELEC. BLUE (VERY SCARCE AND VERY DESIRABLE; SUPER HIGHLIGHTS)</p> <p>___ 23. N Leaf and Beads ftd. Rose Bowl - Elec. Blue (very scarce and desirable with blue highlights)</p> <p>___ 24. N PEACOCKS 8 RUFFLED BOWL WITH RIBBED EXT. - AQUA OPAL. (RARE AND DESIRABLE WITH A NICE MARI. OVERLAY)</p> <p>___ 25. DUGAN FISHERMANS HANDLED MUG - MARI. (VERY SCARCE COLOR; NICE WITH AVERAGE IRID.)</p> <p>___ 26. Dugan Fishermans Handled Mug - Purp. (scarce; pretty nice)</p> <p>___ 27. Dugan Beaded Shell Handled Mug - Blue (scarce color; nice)</p> <p>___ 28. Dugan Beaded Shell Tumbler - Amy. (nice color and irid.)</p> <p>___ 29. Dugan Peacock at the Fountain Tumbler - Blue (scarce; nice example)</p> <p>___ 30. Dugan Stork in the Rushes Tumbler with Beaded Edge - Blue (nice color and irid.)</p> <p>___ 31. Dugan Rambler Rose Tumbler - Blue (scarce; nice)</p> <p>___ 32. Dugan Floral and Grape Tumbler - Blue (nice color)</p> <p>___ 33. Dugan Heavy Iris Tumbler - Dk. Mari. (really nice example)</p> <p>___ 34. Lot (3) Dugan Tumblers - Floral and Grape/Daisy and Lattice/Vineyard - Mari. (selling as a lot)</p> <p>___ 35. Lot (2) Dugan Mugs - Stork and Rushes/Vintage Band - Mari. (selling as a lot)</p> <p>___ 36. Dugan Stork in the Rushes Tumbler with Lattice Band - Blue (quite scarce; very attractive example)</p> <p>___ 37. Dugan Stork in the Rushes Tumbler with Beaded Edge - Blue (scarce; nice)</p> <p>___ 38. Fenton Floral and Grape Tumbler - Blue (scarce; nice color)</p> <p>___ 39. Dugan Peacock at the Fountain Tumbler - Blue (scarce; nice)</p> <p>___ 40. 9 1/2" DUGAN CHERRIES 8 RUFFLED BOWL WITH JEWELLED HEART EXT. - PURP. (QUITE A RARE AND DESIRABLE ITEM; REALLY NICE)</p> <p>___ 41. Dugan Six Petals Tri-Cornered Bowl - Purp. (scarce; nice)</p> <p>___ 42. Dugan Question Mark Stemmed Handled Bon Bon - Purp. (nice irid.)</p> <p>___ 43. Dugan Cherry Wreath ind. Oval Berry Bowl - Lt. Amy. (odd tint; scarce)</p> <p>___ 44. DUGAN MARY ANN HANDLED VASE - AMY. (VERY SCARCE AND VERY DESIRABLE; REALLY NICE EXAMPLE)</p> |
|---|--|

45. **11" TALL DUGAN LINED LATTICE SWUNG VASE - PURP. (VERY DESIRABLE WITH SUPER IRID.)**
46. 8 1/2 - 9" Dugan Apple Blossom Twig low Ruffled Plate - P. Opal. (scarce; nice example)
47. 6" Dugan Cherries 8 Ruffled Sauce with Jeweled Heart Ext. - P. Opal. (nice opal.)
48. 9" Dugan Fanciful I.C. Shaped Bowl - White (very scarce; really nice irid.)
49. Lot (3) Hatpins - Cattails/Big Butterfly/odd Star/Floral - Dark (selling choice; star patterned one is neat)
50. **N PEACOCKS STIPPLED BOWL WITH P.C.E. AND NARROW BASE WITH RIBBED EXT. - RENNINGER BLUE (VERY RARE AND VERY DESIRABLE; SUPER IRID. AND A RARE COLOR)**
51. **N PEACOCKS 8 RUFFLED BOWL WITH RIBBED EXT. - AQUA OPAL. (RARE AND DESIRABLE; NICE OPAL. AND LIGHT MARI. OVERLAY)**
52. N Peacocks 8 Ruffled Bowl with Ribbed Ext. - Purp. (very scarce with super highlights)
53. **N LATTICE AND POINSETTIA FTD. 8 RUFFLED BOWL WITH RIBBED EXT. - PURP. (RARE AND DESIRABLE PATTERN; NICE COLOR AND IRID.)**
54. 8" N Wishbone ftd. Deep 8 Ruffled Bowl with Ruffles and Rings Ext. - Amy. (scarce; nice example)
55. **N THREE FRUITS STIPPLED PLATE WITH RIBBED EXT. - ELEC. BLUE (RARE AND VERY DESIRABLE WITH BRIGHT BLUE HIGHLIGHTS)**
56. **N GOOD LUCK 8 RUFFLED BOWL WITH RIBBED EXT. - DK. PURP. (VERY DESIRABLE WITH ELEC. BLUE HIGHLIGHTS)**
57. N Strawberry 8 Ruffled Bowl with Basketweave Ext. - Purp. (scarce; nice)
58. 10" Tall N Diamond Point Swung Vase - Purp. (nice color and irid.)
59. 11" Tall N Tree Trunk Standard Swung Vase - Purp. (scarce; nice)
60. **N CORN VASE WITH STALK BASE - GREEN (RARE AND VERY DESIRABLE; HAS TO BE ONE OF THE BETTER EXAMPLES I'VE SEEN; SUPER IRID.)**
61. **N RIBBED TORNADO TRI-CORNERED VASE - PURP. (RARE AND DESIRABLE ITEM; HAS GOLD HIGHLIGHTS)**
62. **N TORNADO TRI-CORNERED VASE - PURP. (RARE AND DESIRABLE; HAS GREAT COLOR AND IRID.)**
63. N G&C Cologne Bottle and Stopper - Purp. (scarce; really nice example)
64. N G&C Covered Powder Jar - Purp. (scarce; nice color and irid.)
65. **N G&C FTD. HATPIN HOLDER - PURP. (SCARCE; SORTA SATINY AND PERFECT)**
66. **N G&C FTD. HATPIN HOLDER - GREEN (SCARCE; NICE COLOR WITH A SATINY FINISH)**
67. N G&C Handled Bon Bon with Basketweave Ext. - Green (scarce with bright color and highlights)
68. N Beaded Cable ftd. Ruffled Rose Bowl - Purp. (scarce; nice irid.)
69. N Beaded Cable ftd. Ruffled Rose Bowl - Dk. Mari. (really nice color)
70. **N IVY TOWN PUMP - PURP. (ALWAYS RARE AND VERY DESIRABLE; REALLY NICE EXAMPLE)**
71. **N DANDELION HANDLED MUG - PURP. (VERY SCARCE; NICE COLOR AND IRID.)**
72. N Singing Birds Handled Mug - Purp. (really nice item with bright blue highlights)
73. N Eight Sided Handled Bushel Basket - Amy. (scarce; nice irid.)
74. 8" N Rosette ftd. 8 Ruffled Bowl with Ruffles and Rings Ext. - Purp. (nice color and irid.)
75. **N DAISY AND DRAPE FTD. FLARED VASE - AQUA OPAL. (RARE AND DESIRABLE; NICE AVERAGE COLOR OPAL. AND IRID.)**
76. **N LEAF AND BEADS FTD. ROSE BOWL - SMOKEY LAVENDER (VERY RARE AND VERY DESIRABLE BASE COLOR WITH GREAT IRID.)**
77. **N LEAF AND BEADS FTD. ROSE BOWL - AQUA OPAL. (VERY SCARCE AND DESIRABLE; NICE COLOR AND OPAL.)**
78. **N LEAF AND BEADS FTD. ROSE BOWL - WHITE (RARE AND DESIRABLE; GREAT FROSTY IRID.)**
79. N Leaf and Beads ftd. Rose Bowl - Elec. Blue (rare and desirable with blue highlights)
80. **N PEACOCK AT THE FOUNTAIN COVERED BUTTER DISH - PURP. (VERY SCARCE TO FIND; NICE COLOR AND IRID.)**
81. **N ACORN BURR COVERED BUTTER DISH - PURP. (ANOTHER SCARCE ITEM WITH NICE COLOR AND IRID.)**
82. N Thin Rib ftd. J.I.P. Vase - Purp. (scarce with nice satiny irid.)
83. **8 1/2" WESTMORELAND CAROLINA DOGWOOD 6 RUFFLED BOWL - BLUE OPAL. (VERY SCARCE AND QUITE A NICE EXAMPLE)**
84. 6" Westmoreland Hobstar Fruit 2 sided Banana Dish - P. Opal. (scarce pattern, shape and color)
85. **13" FENTON STAG AND HOLLY BALL FTD. CHOP PLATE - MARI. (RARE AND EXTREMELY DESIRABLE; GREAT COLOR AND NICE IRID.)**
86. 11 1/2" Fenton Stag and Holly lg. 8 Ruffled Bowl - Mari. (nice color and irid.)
87. 8" Fenton Chrysanthemum Deep 8 Ruffled Bowl - Amy. (scarce base color; satiny)
88. 8" Fenton Thistle Round Bowl with Tight C.R.E. - Green (scarce shape; satiny)
89. 6" Fenton Pine Cone 6 Ruffled Sauce - Amy. (scarce color)
90. **9" FENTON DRAGON AND LOTUS I.C. SHAPED BOWL - RED (RARE ITEM; DARK COLOR WITH A SATINY FINISH)**
91. 9" Fenton Dragon and Lotus I.C. shaped Bowl - Blue (nice satiny example)
92. 7 1/2" Fenton Acorn low 8 Ruffled Bowl - Mari./Vaseline (scarce; nice color)
93. 8 1/2" Fenton Heart and Vine 6 Ruffled Bowl - Blue (nice color and irid.)
94. Fenton Orange Tree Handled Shaving Mug - Blue (nice color)
95. **FENTON ORANGE TREE COVERED POWDER JAR - AMY. (VERY RARE AND VERY DESIRABLE; REALLY NICE)**
96. Fenton Orange Tree Covered Powder Jar - Blue (scarce; nice item)
97. Fenton Peacock at the Urn Stemmed 6 Ruffled Compote - Blue (nice color)
98. Fenton Butterfly and Fern Tumbler with Collar Base - Blue (nice and satiny)
99. Fenton Butterfly and Berry Tumbler - Blue (nice color)
100. **9 1/2" FENTON HOLLY FLARED PLATE - GREEN (RARE AND UNDER PRICED; NICE BRIGHT HIGHLIGHTS)**
101. 9 1/2" Fenton Holly 8 Ruffled Bowl - Blue (nice color and irid.)
102. Fenton Butterfly and Berry ftd. Round ind. Berry Bowl - Mari.
103. Fenton Orange Tree Stemmed Sherbet - Blue (nice color)
104. **FENTON ORANGE TREE HANDLED LOVING CUP - BLUE (VERY SCARCE AND VERY DESIRABLE; SUPER COLOR AND IRID.)**
105. **9 1/2 - 10" FENTON TEN MUMS LG. BALL FTD. BOWL WITH 3 IN 1 EDGE - GREEN (RARE AND DESIRABLE VARIATION; BRIGHT SATINY IRID.; NICE)**
106. 9" Fenton Ribbon Tie low Bowl with 3 in 1 Edge - Blue (goldish highlights)
107. **7 1/2" FENTON HORSEHEAD MEDALLION 6 RUFFLED BOWL - BLUE (SCARCE BASE COLOR WITH SATINY IRID.)**
108. Fenton Horsehead Medallion ftd. J.I.P. Bowl - Mari. (nice color and shape)
109. 14 - 16" Tall Fenton Rustic Mid size Swung Vase with C.R.E. - Blue (nice color and size)
110. **FENTON PANTHER LG. FTD. 8 RUFFLED MASTER BERRY BOWL - GREEN (RARE BASE COLOR - SORTA OLIVE; DARK IRID.)**

111. **7 1/2" FENTON VINTAGE GRAPE FLAT PLATE - BLUE (SCARCE WITH NICE COLOR AND IRID.)**
112. Fenton Blackberry Spray 4 sided Square Hat - Mari.
113. N Oriental Poppy Tumbler - Odd Amy. (odd base color)
114. N Oriental Poppy Tumbler - Dk. Purp. (really dark)
115. **M'BURG TROUT AND FLY BOWL WITH 3 IN 1 EDGE - AMY. (VERY SCARCE; SORTA HOREHOUND; REALLY NICE AND SATINY)**
116. M'burg Primrose 6 Ruffled Bowl - Amy. (nice satiny finish)
117. Imperial Tiger Lily Tumbler - Dk. Mari. (nice color)
118. Imperial Grape Tumbler - Helios Green
119. Imperial Grape Tumbler - Mari.
120. Imperial 474 Tumbler - Mari. (nice color)
121. Imperial Tiger Lily Tumbler - Mari. (nice color)
122. Imperial Fashion Tumbler - Mari.
123. Fenton Butterfly and Fern Tumbler with Ground Base - Amy. (satiny)
124. Fenton Blackberry J.I.P. Hat with Crimped Edge - Aqua/Mari. (scarce color and shape)
125. **M'BURG NESTING SWAN 6 RUFFLED BOWL - AMY. (SCARCE WITH A NICE SATINY FINISH)**
126. **6" M'BURG STRAWBERRY WREATH VARIANT LOW SAUCE WITH CRIMPED EDGE - AMY. (RARE ITEM WITH A NEAT SHAPE AND GREAT RADIUM FINISH)**
127. 6" M'burg Strawberry Wreath Variant low Sauce with Crimped Edge - Mari. (same as above; radium and nice)
128. 8" M'burg Grape Wreath Variant Bowl with 3 in 1 Edge - Mari. (scarce; nice radium finish)
129. 6 1/2" M'burg Cosmos low I.C. shaped Bowl - Green (radium finish)
130. **6" M'BURG STRAWBERRY WREATH VARIANT DEEP FLARED SAUCE - MARI. (SORTA RARE SHAPE FOR THIS ITEM; RADIUM)**
131. **7 1/2" FENTON VINTAGE GRAPE FLAT PLATE - AMY. (VERY SCARCE WITH A BRIGHT SATINY FINISH)**
132. N Leaf and Beads ftd. Rose Bowl - Dk. Mari. (really nice color and irid.)
133. Imperial Lustre Rose ftd. Fernery - Amber (rare base color for this item)
134. Set (3) Frosted Acid Etched Shades - White (selling so much each for set)
135. **U.S. GLASS STRETCH "BELL AND ROPE" 3 PC. CONSOLE SET - VASELINE (QUITE A RARE AND DESIRABLE SET; A REAL BEAUTY)**
136. N'wood Wide Paneled Stretch Covered Candy Dish - Vaseline (nice color and irid.)
137. **FENTON LAUREL LEAVES STRETCH 7 PC. SALAD SET - CELESTE BLUE (EXTREMELY RARE COMPLETE SET; 6 PLATES AND CENTER BOWL; SUPER COLOR)**
138. 8" Tall Dugan Plain Stretch Bell Shaped Candlestick - Celeste Blue (nice color)
139. Fenton Pastel Swan Master Salt - Celeste Blue
140. **8" FENTON BLACKBERRY 2 ROW OPEN EDGE FLAT PLATE - DK. MARI. (RARE AND ABSOLUTELY A BEAUTY!; PERFECT WITH GREAT COLOR AND IRID.)**
141. Fenton Blackberry 2 Row Open Edge 6 Ruffled Hat - Green (scarce color; nice)
142. Fenton Blackberry 2 Row Open Edge 6 Ruffled Hat - Blue (nice color)
143. Fenton Blackberry 2 Row Open Edge 6 Ruffled Hat - Mari. (satiny irid.)
144. Fenton 2 Row Open Edge 6 Ruffled Hat - Mari./Vaseline (scarce base color; really nice)
145. **FENTON LARGE SIZE 2 ROW OPEN EDGE 4 SIDED SQUARE HAT - CELESTE BLUE (RARE AND VERY DESIRABLE; GREAT COLOR)**
146. **FENTON LARGE SIZE 2 ROW OPEN EDGE 6 RUFFLED HAT - CELESTE BLUE (ANOTHER RARE AND DESIRABLE ITEM; NICE)**
147. **FENTON 2 ROW OPEN EDGE I.C. SHAPE HAT - CELESTE BLUE (RARE AND DESIRABLE; SCARCE SHAPE AND COLOR)**
148. **FENTON LARGE SIZE 2 ROW OPEN EDGE 4 SIDED SQUARE HAT - WHITE (VERY SCARCE; FROSTY WITH GREAT IRID.)**
149. **FENTON LARGE SIZE 2 ROW OPEN EDGE I.C. SHAPED BOWL - WHITE (ANOTHER REALLY SCARCE ITEM; FROSTY AND NICE)**
150. **FENTON 2 ROW OPEN EDGE 6 RUFFLED HAT - RED (ALWAYS A DESIRABLE ITEM; HAS A DARK SATINY FINISH)**
151. Fostoria Brocaded Palm Round Handled Nappy - Pink (scarce with great irid.)
152. Fostoria Brocaded Acorn Round Handled Nappy - Ice Blue (scarce with really nice irid.)
153. Fostoria Brocaded Acorn 2 sided Handled Nappy - Ice Blue (scarce; nice)
154. N Paneled Holly ftd. 2 Handled 2 sided Bon Bon - Green (radium finish)
155. **N PEACOCK AT THE FOUNTAIN LG. FTD. FRUIT BOWL - MARI. (VERY SCARCE AND DESIRABLE; NICE COLOR AND IRID.)**
156. 8 1/2" N Tree Trunk Squatty Flared Vase - Purp. (scarce; satiny)
157. 7 1/2" N Fine Rib Squatty Flared Vase - Purp. (scarce size; nice)
158. 6" Westmoreland Scales Flat Plate - Amber (scarce base color)
159. Westmoreland Prisms 2 Handled Bon Bon - Mari. (scarce; nice color)
160. **WESTMORELAND 270 STEMMED I.C. SHAPED COMPOTE - MARI./MILK GLASS (RARE AND DESIRABLE BASE COLOR WITH GREAT OVERLAY)**
161. Dugan Folding Fan Stemmed 6 Ruffled Crimped Edge Compote - P. Opal. (nice opal.)
162. 7 1/2" Dugan Fishscale Flared Crimped Edge Bowl - Purp. (very scarce with great irid.)
163. Dugan Beaded Shell Handled Mug - Blue (scarce base color)
164. **7 1/2 - 8" DUGAN CIRCLE SCROLL SWUNG VASE - LT. MARI. (RARE PATTERN IN THIS SHAPE; COLOR IS LIGHTER)**
165. **12" TALL DUGAN LINED LATTICE SWUNG VASE - AMY. (VERY SCARCE WITH GREAT IRID.)**
166. 7 1/2 - 8" Fenton Long Thumbprint Squatty Vase - green (nice color)
167. Fenton Orange Tree Stemmed Goblet - Blue (scarce color; really nice)
168. 9" Fenton Holly 8 Ruffled Bowl - Blue (nice color and irid.)
169. 8 1/2" Fenton Holly I.C. Shaped Bowl - Mari. (nice color)
170. **JAIN BUDDHA FIGURAL NOVELTY - ODD LIME VASELINE (EXTREMELY RARE ITEM WITH BEAUTIFUL BASE COLOR AND SUPER IRID.)**
171. **6" TALL FINNISH STARLET CYLINDER VASE - BLUE (VERY RARE PATTERN IN THIS COLOR - REALLY NEAT)**
172. 10" Tall Fenton Boggy Bayou Swung Vase - Green (actually quite a rare color for this pattern)
173. 9" Tall Fenton Diamond Rib Swung Vase - Green (nice color)
174. 12" Tall Fenton Plume Panels Swung Vase - Green (very scarce and nice)
175. 14 - 15" Tall Fenton Diamond Point Columns Lg. Swung Vase - Amy. (nice with a scarce base color)
176. 14 - 15" Tall Fenton Diamond Point Columns Lg. Swung Vase - Blue (nice color, size and irid.)
177. 12" Imperial Wide Panel Flat Chop Plate - Mari. (great irid.)
178. 9" Imperial Grape Flat Plate - Mari. (nice color and irid. - getting scarce)
179. Imperial Twins 2 pc. Ruffled Fruit Bowl Set - Dk. Mari. (nice color and irid.)
180. **I.G. WHIRLING STAR LG. 14 PC. MASTER PUNCH SET - SMOKE (RATHER RARE 60'S SET - COMPLETE WITH GREAT IRID. AND SIZE - IMPRESSIVE)**
181. 8 1/2 - 9" Imperial 3 in 1 Lg. 6 Ruffled Bowl - Smoke (scarce color and size with great irid.)
182. 8 1/2" Imperial Embossed Scroll 8 Ruffled Bowl with File Ext. - Purp. (scarce with super irid.)
183. Coolie Hatpin - Dark (scarce)
184. Imperial Grape Tumbler - Green (nice example)

185. Fenton Orange Tree Standard Flared Mug - Blue (nice color)
186. (2) Fenton Orange Tree Handled Mugs - Mari. (selling choice)
187. Fenton Orange Tree ftd. Tumbler - Blue (scarce)
188. Fenton Orange Tree ftd. Tumbler - Mari. (scarce)
189. Fenton Bouquet Tumbler - Mari.
190. Fenton Paneled Dandelion Tumbler - Amy. (satiny)
191. Fenton Lattice and Grape Tumbler - Mari.
192. Fenton Butterfly and Berry Tumbler - Mari.
193. Fenton Two Row Open Edge 2 sided Hat - Mari.
194. Fenton Two Row Open Edge 6 Ruffled Hat - Mari.
195. **9 1/2" FENTON ORANGE TREE FLAT PLATE - BLUE (SCARCE WITH PRETTY NICE COLOR AND IRID.)**
196. 8 1/2" Fenton Persian Medallion Bowl with 3 in 1 Edge - Blue (nice item)
197. Fenton Vintage Grape 2 Handled 2 sided Bon Bon - Blue (really blue)
198. Fenton Blackberry 2 Row Open Edge 6 Ruffled Hat - Blue (nice color)
199. Fenton 2 Row Open Edge J.I.P. Hat - Blue
200. (2) 13 - 14" Tall Fenton Diamond Point Columns Mid-size Swung Vases - Blue (nice items; selling so much each for pair)
201. 8 1/2 - 9" Fenton Fine Rib Swung Vase - Blue
202. Fenton Orange Tree Handled Shaving Mug - Blue (nice color)
203. Fenton Orange Tree Handled Breakfast Creamer - Blue (scarce part)
204. Fenton Blackberry Spray 2 sided Hat - Blue
205. **11 - 12" TALL FENTON LONG THUMBPRINT SWUNG VASE - LIME GREEN (RARE BASE COLOR FOR THIS ITEM; A TOUGHIE)**
206. 12 - 13" Tall Fenton Diamond Point Columns Swung Vase - Amy. (scarce base color)
207. 9" Tall Fenton Diamond Rib Swung Vase - Amy. (satiny)
208. 8" Tall Fenton Butterfly and Berry Swung Vase - Mari.
209. Fenton G&C ball ftd. 8 Ruffled Bowl - Mari.
210. **FENTON ORANGE TREE COVERED POWDER JAR - DK. MARI. (SCARCE WITH REALLY NICE COLOR AND IRID.)**
211. 8 1/2" Fenton Peacock and Grape Bowl with 3 in 1 Edge - Mari. (nice color)
212. 11 - 12" Tall Fenton April Showers Swung Vase - Mari. (nice color)
213. 6" Fenton Little Flowers Deep Round Sauce - Green
214. 8 1/2" Fenton Chrysanthemum 8 Ruffled Bowl - Amy. (scarce base color; nice satiny irid.)
215. 8 1/2" Fenton Captive Rose 6 Ruffled Bowl - Blue (nice color and irid.)
216. (2) N G&C Stemmed Round Sherbets - Mari. (both nice; selling as a pair)
217. **N G&C BREAKFAST SUGAR AND CREAMER - GREEN (VERY SCARCE COLOR FOR THIS SET; NICE)**
218. N G&C Covered Powder Jar - Purp. (scarce with nice color and irid.)
219. N G&C Covered Butter Dish - Dk. Mari. (scarce; nice dark color and irid.)
220. **9 - 9 1/2" N G&C VARIANT FLARED PLATE WITH BASKETWEAVE EXT. - PURP. (VERY SCARCE AND ATTRACTIVE; NICE)**
221. 7 1/2" N G&C Plate with Basketweave Ext. - Purp. (scarce size with a nice satiny finish)
222. N G&C ftd. Plate with Meander Ext. - Purp. (scarce with a nice luster)
223. **N G&C COVERED SWEETMEAT COMPOTE - PURP. (POPULAR ITEM AND THIS ONE IS REALLY NICE)**
224. 6" N Fruit and Flowers 6 Ruffled Sauce with Basketweave Ext. - Amy. (nice irid.)
225. **9" N STRAWBERRY STIPPLED 8 RUFFLED BOWL WITH RIBBED EXT. - PURP. (RARE VARIATION WITH GOLD AND SILVER HIGHLIGHTS)**
226. N Three Fruits 8 Ruffled Bowl with Basketweave Ext. - Green (nice satiny finish)
227. **N STRAWBERRY PLATE WITH BASKETWEAVE EXT. - PURP. (VERY SCARCE; NICE COLOR AND IRID.)**
228. 9 1/2" N Stippled Rays Lg. 8 Ruffled Bowl with Basketweave Ext. - Mari. (nice color)
229. N Wild Rose ftd. Flared Candy Dish with Ribbed Int. - Green
230. **N GOOD LUCK 8 RUFFLED BOWL WITH RIBBED EXT. - MARI. (SCARCE; REALLY NICE COLOR AND IRID.)**
231. N Peacock at the Fountain Tumbler - Mari. (nice color)
232. N Raspberry Tumbler - Green (really nice)
233. N Raspberry Tumbler - Dk. Mari. (nice dark color)
234. N Acorn Burr Handled Creamer - Purp. (scarce par; goldish)
235. **13 - 14" TALL N TREE TRUNK MID-SIZE SWUNG VASE - PURP. (VERY SCARCE AND VERY DESIRABLE WITH A NICE MULTI-COLORED SATINY IRID.)**
236. 8 - 9" N Tree Trunk Standard Swung Vase - Purp. (nice color and irid.)
237. N Ribbed ftd. J.I.P. Vase - Purp. (scarce; has average, satiny irid.)
238. N Round Handled Bushel Basket - Blue (scarce; nice color)
239. M'burg Rays and Ribbons 6 Ruffled Bowl - Amy. (scarce; satiny)
240. M'burg Rays and Ribbons Bowl with 3 in 1 Edge - Green (scarce; satiny)
241. Westmoreland Leaf Swirl Compote - Amy. (scarce item)
242. 11" Tall Westmoreland Corinth Swung Vase - Amy. (nice color)
243. Westmoreland Fruit Salad Punch Base only - Amy. (scarce part with 2 chunks on tip rim)
244. Dugan Fan ftd. Handled Gravy Boat - P. Opal. (very scarce; nice opal.; satiny)
245. **DUGAN MANY FRUITS ROUND PUNCH TOP ONLY - MARI. (SCARCE PART; A NICE DARK BRIGHT SATINY EXAMPLE)**
246. Dugan Long Thumbprint Breakfast Sugar and Creamer - Mari. (satiny pair)
247. Dugan Double Stem Rose domed 10 Ruffled Bowl - Mari.
248. (2) Dugan Peacock at the Fountain Tumblers - Blue (selling choice)
249. Dugan Stork in the Roses Tumbler with Beaded Top - Blue (nice color)
250. **9" DUGAN APPLE BLOSSOM TWIGS FLARED PLATE WITH BASKETWEAVE EXT. - AMY. (SCARCE; HAS AVERAGE SATINY IRID.)**
251. 9" Dugan Three Fruits 12 sided Plate - Amy. (scarce; satiny irid.)
252. 9 1/2" Dugan Pearly Dots Bowl with 3 in 1 Edge - Amy.
253. I.G. Octagon style domed Flared Vase - Mari.
254. 8" Imperial Open Rose 8 Ruffled Bowl - Amber (nice color)
255. **IMPERIAL STAR MEDALLION HANDLED MILK PITCHER - SMOKE (VERY SCARCE AND ACTUALLY QUITE A NICE EXAMPLE)**
256. Imperial Octagon Mid-size Handled Water Pitcher - Mari. (nice color)
257. Imperial Fieldflower Tumbler - Mari. (nice example)
258. Imperial Robin Handled Mug - Mari.
259. Imperial Lustre Rose ftd. Flared Fruit Bowl - Pastel Mari. (super irid.)
260. **12" IMPERIAL RIPPLE SWUNG VASE - PURP.(DESIRABLE WITH GREAT COLOR AND IRID.)**
261. 12" Imperial Ripple Swung Vase - Helios Green
262. (2) 12" Imperial Beaded Bullseye Swung Vases - Mari. (well matched; selling so much each for pair)
263. **9 1/2 - 10" IMPERIAL HEAVY GRAPE 8 RUFFLED BOWL - LITE BLUE / MARI. (SORTA ODD BASE COLOR; SCARCE ITEM)**
264. 9" Imperial Grape Flat Plate - Mari. (nice color and irid.)
265. 8 1/2" Imperial Grape 8 Ruffled Bowl - Mari. (nice irid.)
266. Depression Era Covered Duck Powder Jar with Original Ribbon and Shovel - Mari. (cute novelty esp. having the ribbon and scoop)
267. Depression Era 3 pc. Leaf Mint Set - mari. (nice gift idea)
268. Corning Pyrex Insulator - Mari.
269. Odd Depression Era Squatty Candlestick - Mari.
270. SURPRISE!!!



Lot #62, 104, 61



Lot #76



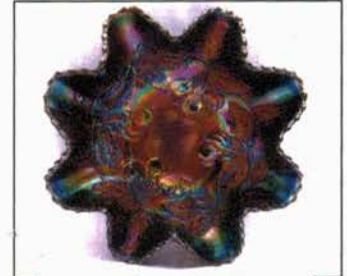
Lot #60, 171, 70



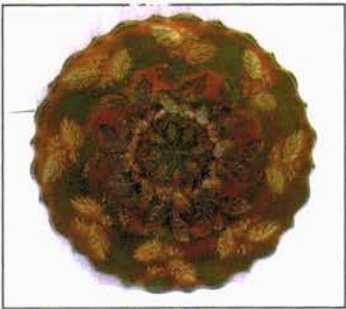
Lot #170, 75



Lot #17



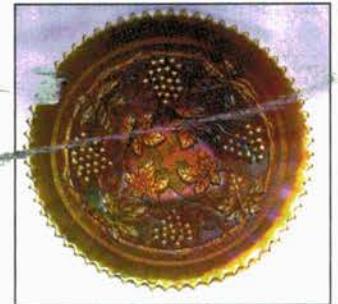
Lot #40



Lot #100



Lot #55



Lot #19

Burns Auction Service

P.O. Box 608
Bath, New York 14810

First Class
US Postage
PAID
Permit No. 7
Hammondsport, NY



LEE MARKLEY
BOX 306
MENTONE IN 46539

