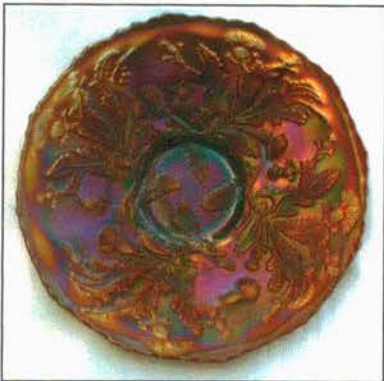




Lot #55



Lot #110



Lot #111



Lot #11



Lots #101, 102



Lot #10

# BURNS

AUCTION SERVICE

## A.C.G.A. Convention Auction

**9:30 am, Friday, June 27, 2003**

Preview: 8 - 9:30 am Friday & Thursday evening

*at the*

### Embassy Suites

550 Cherrington Parkway,  
Coraopolis, PA 15108

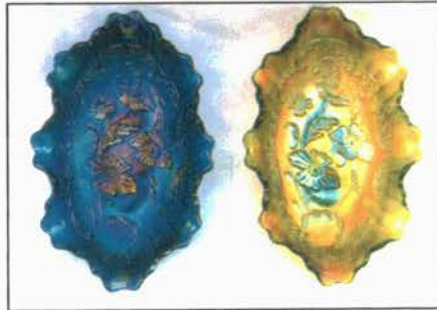
**(412) 269-9070**

*(adjacent to the Pittsburgh International Airport on  
Business Rte. 60 at Thorn Run Rd. exit)*

William Richards, Auctioneer • PA License #AU002580L



Lot #220



Lots #40, 38



Lot #205



Lot #175



Lot #133



Lot #260



Lot #185



Lot #80



Lot #151



Lot #45

This year's A.C.G.A. Convention Auction will feature glass from the collections of Mary & David Sharp from Lititz, Pa. Their vast collection contains some of the more attractive examples you'll see and they were sure to add a number of these to the auction. There will be something for everyone and we're sure you won't be disappointed in attending.

The Embassy Suites of Coraopolis, Pa. will host the event. The motel is located right across from the Pittsburgh International Airport off the Thorn Run Road exit of Business Rte. 60. The facility is a beauty with a stream running through, fish ponds and all the goodies an Embassy Suites will provide. I'm telling ya - get off your hind quarters and show up - you'll probably have more fun than you think! The auction starts at 9:30 am Friday, June 27. Previews from 8:00 am to 9:30 am and Thursday evening after all other activities have cleared. Mail bids due by Tuesday, June 24, 2003. Hope to see ya there!

### Burns Auction Service

Tom Burns  
P.O. Box 608  
Bath, New York 14810  
(607) 776-7942 Cell: 731-9302

Bill Richards  
44 Water Street, Poland OH 44514  
(330) 757-2001  
FAX (330) 757-4917

Bill Richards III  
2253 Country Lane  
Poland, OH 44514  
(330) 755-2620

#### Mail Bids honored under the following conditions:

1. No deposit required. Bidders will take full responsibility to honor any and all bids we execute for them. Payment in full plus postage and handling required after notification and before we ship any item to them.
2. Items are bid on in perfect condition with average or above average iridescence OR as listed in the brochures. Bids will not be carried out when damage on an item has been found during the auction. **PEOPLE PRESENT AT THE AUCTION ARE RESPONSIBLE FOR FINDING ANY PINHEADS, WEAR, SPOTTINESS, MANUFACTURER'S DEFECTS OR ANY OTHER MINOR FLAWS, ETC.**
3. Successful bidders will be notified by collect call from the auctioneer **SO BE SURE TO INCLUDE PHONE NUMBER.**
4. Phone inquiries about the glass or any other questions are welcome.
5. If you have some other person at the auction bidding for you, they must pay for the item before taking it.
6. Any terms or conditions given the day of the auction will supersede any previously published information.
7. Mail, e-mail, fax and phone bids are due by Tuesday, June 24, 2003

Visit our website at: <http://www.woodsland.com/burnsauction/>

- |       |  |     |   |
|-------|--|-----|---|
| 151   | Geometric Patterned Hatpin - Dark (scarce item with really nice irid.)   | 325 | 13. NORTHWOOD GRAPE AND CABLE STIPPLED PLATE WITH RIBBED EXTERIOR - GREEN (RARE VARIATION WITH GREAT COLOR AND IRID.)   |
| 125   | 2. Fenton Stretch Era ftd. Perfume Bottle and Stopper - Grecian Gold (very scarce; nice shape; fairly good stopper)                                      | 350 | 14. NORTHWOOD GRAPE AND CABLE STIPPLED PLATE WITH RIBBED EXTERIOR - AMY. (VERY RARE COLOR FOR THIS ITEM; REALLY NICE EXAMPLE)   |
| 175   | 3. Cambridge Inverted Strawberry Covered Powder Jar - Mari. (very scarce and desirable; nice color; lid has fair detail)                                 | 800 | 15. NORTHWOOD GRAPE AND CABLE HANDLED COVERED CRACKER JAR - ICE GREEN (VERY RARE AND VERY DESIRABLE; SUPER ITEM WITH GREAT COLOR AND IRID.; LID HAS SOME SILVERY IRID.) |
| 100   | 4. Fenton Stretch Large Size Melon Rib Fan Vase - Tangerine (very scarce and desirable in this color)  | 400 | 16. NORTHWOOD GRAPE AND CABLE FTD. BANANA BOAT - ELECTRIC BLUE (RARE AND VERY DESIRABLE; GREAT COLOR WITH SUPER HIGHLIGHTS)   |
| 215   | 5. FOSTORIA BROCAIDED ACORN LARGE FTD. CORNUCOPIA CENTERPIECE BOWL - ICE BLUE (RARE AND DESIRABLE; GREAT SHAPE, COLOR AND IRID.)                         | 300 | 17. NORTHWOOD GRAPE AND CABLE FTD. BANANA BOAT - ELECTRIC GREEN (RARE AND UNDERPRICED; GREAT COLOR AND IRID.)   |
| 195   | 6. DUNCAN HEXAGONAL BLOCK ENAMELED WATER PITCHER AND THREE TUMBLERS - MARI. FLASH (VERY SCARCE ITEMS; SELLING SEPARATELY)                                | 500 | 18. NORTHWOOD GRAPE AND CABLE FTD. BANANA BOAT - ICE GREEN (RARE, LARGE PASTEL ITEM WITH GREAT COLOR AND IRID.)   |
| 70    | 7. DUGAN DOUBLE STEM ROSE DOMED ROUND BOWL - SMOKE / MARI. (QUITE A SCARCE BASE COLOR FOR THIS ITEM; NICE)   | 475 | 19. NORTHWOOD GRAPE AND CABLE FTD. BANANA BOAT - ICE BLUE (ANOTHER DESIRABLE ITEM WITH GREAT BASE COLOR AND IRID.)  |
| 8.    | Dugan Thumbprint Stemmed 8 Ruffled Compote - Pur. (scarce item; unusual in that it has no exterior irid.)  | 625 | 20. NORTHWOOD GRAPE AND CABLE STEMMED RUFFLED OPEN COMPOTE - GREEN (RAREST AND MOST DESIRABLE COLOR; A REALLY NICE EXAMPLE)   |
| 9.    | Czech Ribbed Large Two Piece Epergne with Matching Vase - Light Mari. / Blue Trim (rare and unusual item in this design)                                 | 325 | 21. NORTHWOOD GRAPE AND CABLE STEMMED RUFFLED OPEN COMPOTE - MARI. (ANOTHER VERY RARE COLOR FOR THIS ITEM; REALLY NICE EXAMPLE)   |
| 5,000 | 10. NORTHWOOD GRAPE AND CABLE 8 PC. MID SIZE RUFFLED PUNCH SET - ICE BLUE (ABSOLUTELY SUPER SET; GREAT COLOR AND IRID.; WELL MATCHED AND VERY DESIRABLE) | 400 | 22. NORTHWOOD GRAPE AND CABLE STEMMED RUFFLED OPEN COMPOTE - PUR. (VERY SCARCE AND VERY DESIRABLE; GREAT COLOR AND IRID.)   |
| 45    | 11. NORTHWOOD GRAPE AND CABLE 8 PC. MID SIZE RUFFLED PUNCH SET - ICE GREEN (ANOTHER GREAT LOOKING SET; CUPS ARE MORE LIME ICE GREEN)                     | 225 | 23. Northwood Grape and Cable Covered Sweetmeat Compote - Pur. (desirable item with excellent color and irid.)  |
| 000   | 12. NORTHWOOD GRAPE AND CABLE VARIANT STIPPLED PLATE WITH RIBBED EXTERIOR - ELECTRIC BLUE (SUPER EXAMPLE WITH GREAT COLOR AND IRID.)                     | 215 | 24. Pair of Northwood Grape and Cable Candlesticks - Green (scarce color for these items; well matched; selling as a pair)  |
|       |  | 125 |   |

- 375 25. 7" NORTHWOOD GRAPE AND CABLE PLATE WITH BASKETWEAVE EXTERIOR - AMY. WITH OPAL. (QUITE A RARE AND UNUSUAL COLOR FOR THIS ITEM)
- 175 26. Northwood Grape and Cable Covered Butter Dish - Pur. (scarce with really nice color and Irid.)
- 185 27. Northwood Grape and Cable Covered Sugar Bowl - Pur. (very scarce item if you need one; nice example)
- 75 28. Northwood Grape and Cable Spooner - Pur. (scarce; nice color and Irid.)
- 90 29. Northwood Grape and Cable Handled Creamer - Pur. (scarce with nice color and Irid.)
- 150 30. NORTHWOOD GRAPE AND CABLE LARGE ICE CREAM BOWL WITH BASKETWEAVE EXTERIOR - BLUE (VERY RARE COLOR FOR THIS ITEM; GREAT BASE COLOR AND MULTI-COLORED IRID.)
- 175 31. Pair of Northwood Grape and Cable Stippled Cologne Bottles and Stoppers - Mari. (very scarce item to find; selling choice - one stopper has some damage)
- 130 31. Pair of Northwood Grape and Cable Stippled Cologne Bottles and Stoppers - Mari. (very scarce item to find; selling choice - one stopper has some damage)
- 110 32. Northwood Grape and Cable Stippled Covered Powder Jar - Mari. (rare variation for this item; lid is a bit light)
- 115 33. Northwood Grape and Cable Covered Powder Jar - Pur. (scarce and desirable item)
- 20 34. Northwood Grape and Cable Tumbler - Purple (nice color)
- 225 35. NORTHWOOD POPPY RUFFLED RELISH TRAY WITH RIBBED EXTERIOR - AQUA OPAL. (RARE AND VERY DESIRABLE PASTEL EXAMPLE WITH A SMALL CHIP IN THE BASE)
- 425 36. NORTHWOOD POPPY RUFFLED RELISH TRAY WITH RIBBED EXTERIOR - ICE BLUE (EXCELLENT EXAMPLE OF A VERY SCARCE AND DESIRABLE ITEM)
- 100 37. NORTHWOOD POPPY RUFFLED RELISH TRAY WITH RIBBED EXTERIOR - WHITE (ACTUALLY QUITE A RARE COLOR FOR THIS ITEM; REALLY NICE)
- 250 38. NORTHWOOD POPPY RUFFLED RELISH TRAY WITH RIBBED EXTERIOR - GREEN (RARE AND DESIRABLE BASE COLOR WITH NICE IRID.)
- 145 39. Northwood Poppy Ruffled Relish Tray with Ribbed Exterior - Lavender (odd base color that's tough to find; nice)
- 200 40. NORTHWOOD POPPY RUFFLED RELISH TRAY WITH RIBBED EXTERIOR - ELECTRIC BLUE (SUPER EXAMPLE WITH GREAT DETAIL AND BLUE HIGHLIGHTS)
- 160 41. Northwood Poppy Ruffled Relish Tray with Ribbed Exterior - Mari. (scarce color; pretty nice item)
- 275 42. NORTHWOOD HARVEST POPPY STEMMED RUFFLED COMPOTE - GREEN (RARE PATTERN IN A REALLY TOUGH COLOR; TRY TO FIND ONE)
- 150 43. Northwood Harvest Poppy Stemmed Ruffled Compote - Pur. (scarce and desirable item with nice color and irid.)
- 185 44. Northwood Harvest Poppy Stemmed Ruffled Compote - Mari. (tough item that's as desirable as any of them)
- 1250 45. NORTHWOOD WIDE PANEL 4 LILY EPERGNE - PUR. (SUPER RARE COLOR AND REALLY WELL MATCHED; A VERY DESIRABLE OUTFIT)
- 450 46. 7" NORTHWOOD DIAMOND POINT SQUATTY 7 POINT-ED SWUNG VASE - ICE BLUE (VERY RARE AND DESIRABLE SIZE AND IN A GREAT COLOR)
- 400 47. 7" NORTHWOOD DIAMOND POINT SQUATTY 7 POINT-ED SWUNG VASE - ICE GREEN (ANOTHER VERY DESIRABLE ITEM IN THIS SIZE AND COLOR; NICE)
- 155 48. 7" Northwood Diamond Point Squatty 12 Pointed Swung Vase - Pur. (scarce with nice color and detail)
- 45 49. 7" Northwood Diamond Point Squatty 12 Pointed Swung Vase - Pastel Mari. (scarce with super irid. and desirable size)
- 900 50. 11" NORTHWOOD DIAMOND POINT 6 POINTED SWUNG VASE - AQUA OPAL. (RARE AND DESIRABLE; NICE OPAL. AND HAS A LIGHT MARIGOLD OVERLAY)
- 225 51. 11" Northwood Diamond Point 6 Pointed Swung Vase - Ice Green (rare and desirable; goldish Irid.)
- 500 52. 7" NORTHWOOD THIN RIB SQUATTY SWUNG VASE - ICE BLUE (REALLY RARE AND VERY DESIRABLE SIZE IN THIS COLOR; NICE)
- 255 53. 9" NORTHWOOD THIN RIB SQUATTY SWUNG VASE - ICE GREEN (ANOTHER VERY DIFFICULT EXAMPLE TO FIND IN THIS COLOR AND SIZE)
- 550 54. NORTHWOOD DAISY AND DRAPE FOOTED FLARE VASE - DK. MARI. (RARE AND DESIRABLE WITH A FLARE; NICE COLOR AND IRID.)
- 1450 55. NORTHWOOD CORN VASE WITH STALK BASE - TEAL (EXTREMELY RARE AND VERY DESIRABLE COLOR; AND, ACTUALLY A REALLY SUPER ITEM)
- 500 56. NORTHWOOD CORN VASE WITH STALK BASE - MARI. (RARE COLOR WITH DESIRABLE COLOR AND IRID.)
- 325 57. Northwood Corn Vase with Stalk Base - Ice Green (very scarce and very desirable; nice example)
- 275 58. NORTHWOOD CORN VASE WITH PLAIN BASE - GREEN (RARE AND DESIRABLE; SORTA TOUGH VARIATION; NICE)
- 425 59. 11-12" NORTHWOOD LEAF COLUMNS SWUNG VASE - HOREHOUND (EXTREMELY RARE BASE COLOR AND OVERLAY - REALLY TOUGH)
- 650 60. NORTHWOOD TORNADO <sup>small</sup> LARGE SIZE TRI-CORNERED VASE - GREEN (POPULAR ITEM THAT'S PERFECT WITH REALLY NICE COLOR AND IRID.)
- 475 61. NORTHWOOD TORNADO <sup>small</sup> LARGE TRI-CORNERED VASE - PUR. (ANOTHER ATTRACTIVE EXAMPLE OF THIS POPULAR ITEM)
- 175 62. NORTHWOOD DRAPERY TRI-CORNERED CANDY DISH - AQUA (VERY RARE COLOR FOR THIS ITEM; SELDOM SOLD) <sup>Green</sup>
- 250 63. Northwood Drapery Tri-Cornered Candy Dish - Lime Ice Green (nice tint; tough to find)
- 125 64. Northwood Drapery Tri-Cornered Candy Dish - Ice Blue (very scarce; nice color and Irid.)
- 245 65. Northwood Drapery Tri-Cornered Candy Dish - Electric Blue (super scarce and very attractive)
- 400 66. NORTHWOOD DANDELION TANKARD WATER PITCHER - HOREHOUND (EXTREMELY RARE BASE COLOR FOR THIS ITEM)
- 850 67. NORTHWOOD DANDELION TANKARD WATER PITCHER AND (2) TUMBLERS - GREEN (RARE AND DESIRABLE COLOR; SELLING SEPARATELY)
- 30 <sup>ea</sup> 68. Northwood Dandelion 7 pc. Tankard Water Set - Pur. (scarce and always desirable - a nice set)
- 750 68. Northwood Dandelion 7 pc. Tankard Water Set - Pur. (scarce and always desirable - a nice set)
- 375 69. Northwood Dandelion Tankard Water Pitcher and <sup>4</sup> Tumblers - Mari. (nice color; scarce; selling separately)
- 20 <sup>ea</sup> 70. NORTHWOOD PEACOCKS STIPPLED PLATE WITH NARROW BASE AND RIBBED EXTERIOR - RENNIGER BLUE (RARE AND VERY DESIRABLE; SUPER BASE COLOR WITH A NICE IRID.)
- 1800 70. NORTHWOOD PEACOCKS STIPPLED PLATE WITH NARROW BASE AND RIBBED EXTERIOR - RENNIGER BLUE (RARE AND VERY DESIRABLE; SUPER BASE COLOR WITH A NICE IRID.)
- 650 71. NORTHWOOD PEACOCKS BOWL WITH P.C.E. AND BASKETWEAVE EXTERIOR - GREEN (RARE AND VERY DESIRABLE VARIATION; REALLY NICE COLOR AND IRID.)
- 300 72. Northwood Peacocks Ruffled Bowl with Ribbed Exterior - Pur. (very desirable; nice color)
- 235 73. NORTHWOOD PEACOCK AT THE FOUNTAIN MASTER BERRY BOWL - ELECTRIC BLUE (EXTREMELY RARE COLOR FOR THIS ITEM; A REAL TOUGHIE)
- 350 74. Northwood Peacock at the Urn Large Ice Cream Bowl - Pur. (scarce with nice color and Irid.)
- 375 75. 9" NORTHWOOD PEACOCK AT THE URN TURNED IN LARGE ICE CREAM BOWL - PASTEL MARI. (ODD TURNED IN SHAPE WITH SUPER IRID.; A BIT DIFFERENT)
- 700 76. NORTHWOOD SINGING BIRDS 7 PC. WATER SET - GREEN (A SET THAT'S ALWAYS DESIRABLE AND REALLY NICE)
- 185 77. NORTHWOOD SINGING BIRDS HANDLED MUG - LAVENDER (ODD, LIGHT BASE COLOR; REALLY NICE) <sup>GJC photo emeraldgreen</sup>
- 500 77. NORTHWOOD SINGING BIRDS HANDLED MUG - LAVENDER (ODD, LIGHT BASE COLOR; REALLY NICE)

- 145 78. Northwood Singing Birds Handled Mug - Electric Blue (super Irid. and very desirable)
- 145 79. Northwood Greek Key Ruffled Bowl with Basketweave Exterior - Green (scarce pattern; sorta satiny)
- 700 80. **NORTHWOOD WISHBONE BULBOUS HANDLED WATER PITCHER - GREEN (RARE ITEM AND A VERY DESIRABLE PATTERN; NICE COLOR AND DETAIL)**
- 425 81. Northwood Drapery 7 pc. Water Set - Blue Opal. (not carnival but very attractive)
- 800 82. **NORTHWOOD ROSE SHOW RUFFLED BOWL - AQUA OPAL. (SUPER, SUPER PASTEL EXAMPLE WITH GREAT OPAL. AND NICE IRID.)**
- 750 83. **NORTHWOOD ROSE SHOW RUFFLED BOWL - ICE BLUE ( RARE AND DESIRABLE WITH EXCELLENT COLOR AND IRID.)**
- 75 84. Northwood Petals Stemmed Low Ruffled Compote - Mari.
- 165 85. **NORTHWOOD DAISY AND PLUME FTD. RUFFLED CANDY DISH WITH BLACKBERRY INTERIOR - ICE BLUE (RARE PASTEL ITEM THAT IS UNDERPRICED; GREAT COLOR AND IRID.)** ✖
- 525 86. **NORTHWOOD BUTTERFLY HANDLED BON BON WITH SPIRAL EXTERIOR - ELECTRIC BLUE (VERY RARE ITEM WITH EXCELLENT BLUE HIGHLIGHTS)**
- 375 87. Northwood Butterfly Handled Bon Bon with Spiral Exterior - Mari. (another very scarce item with really nice Irid.)
- 235 88. **NORTHWOOD BEADED CABLE FTD. RUFFLED ROSE BOWL - AQUA OPAL. (POPULAR ITEM; REALLY NICE COLOR AND IRID.)**
- 120 89. Northwood Beaded Cable ftd. Ruffled Rose Bowl - Blue (scarce item with nice color and blue highlights)
- 525 90. **NORTHWOOD THREE FRUITS STIPPLED BOWL WITH P.C.E. AND RIBBED EXTERIOR - BLUE (RARE AND VERY DESIRABLE SHAPE AND PATTERN WITH NICE COLOR AND ATTRACTIVE IRID.)**
- 550 91. Northwood Three Fruits Stippled Ruffled Bowl with Ribbed Exterior - Teal (rare and very desirable item; super even with the chip on the base)
- 300 92. **NORTHWOOD THREE FRUITS STIPPLED RUFFLED BOWL WITH RIBBED EXTERIOR - GREEN (REALLY TOUGH BASE COLOR NOT SEEN OFTEN)**
- 300 93. Northwood Three Fruits Stippled Ruffled Bowl with Ribbed Exterior - Pur. (scarce; really nice color and Irid.)
- 250 94. Northwood Three Fruits Stippled Ruffled Bowl with Ribbed Exterior - Mari. (scarce and desirable; a nice item)
- 250 95. **NORTHWOOD FRUIT AND FLOWERS STEMMED HANDLED BON BON - AQUA OPAL. (GETTING RARE AND HAS ALWAYS BEEN POPULAR; REALLY NICE)**
- 110 96. Northwood Fruit and Flowers Stemmed Handled Bon Bon - Blue (scarce with great color and Irid.)
- 60 97. Northwood Fruit and Flowers Stemmed Handled Bon Bon - Pur. (nice color and detail)
- 225 98. **NORTHWOOD FRUIT AND FLOWERS STIPPLED STEMMED HANDLED BON BON - TEAL (VERY RARE BASE COLOR AND VARIATION; A SUPER ITEM)**
- 250 99. Northwood Nippon Bowl with P.C.E. and Basketweave Exterior - Green (scarce pattern and desirable shape)
- 900 100. **6" NORTHWOOD NIPPON-DAVIDSON'S SOCIETY CHOCOLATES 2 SIDED CARD TRAY WITH BASKETWEAVE EXTERIOR - AMY. (RARE AND VERY DESIRABLE ADVERTISING ITEM; ATTRACTIVE)**
- 2600 101. **FENTON 1914 PARKERSBURG ELKS BELL - BLUE (RARE AND EXTREMELY DESIRABLE; GREAT COLOR AND DETAIL)**
- 1600 102. **FENTON 1911 ATLANTIC CITY ELKS BELL - BLUE (ANOTHER EXTREMELY RARE ITEM; GREAT COLOR WITH AVERAGE DETAIL)**
- 1600 103. **FENTON 1914 PARKERSBURG ELKS PLATE - BLUE (VERY RARE; HAS GREAT IRID. AND PRETTY NICE IRID.)**
- 1050 104. **7" FENTON 1911 ATLANTIC CITY ELKS ROUND BOWL - BLUE (RARE ITEM THAT'S GETTING BETTER AND BETTER)**
- 800 105. **7" FENTON 1910 DETROIT ELKS ROUND BOWL - AMY. (RARE ITEM WITH GREAT DETAIL AND NICE SATINY IRID.)**
- 2300 106. **FENTON ILLINOIS SOLDIERS AND SAILOR FLAT PLATE - BLUE (RARE AND VERY DESIRABLE; SUPER AND HAS ALMOST ELECTRIC IRID. - NICE)**
- 155 107. **7" FENTON LIONS DEEP ROUND FLARED BOWL - SMOKEY BLUE (ODD BASE COLOR AND OVERLAY; VERY SCARCE)**
- 225 108. 7" Fenton Lions Deep Round Flared Bowl - Blue (very scarce and very desirable; great color and detail)
- 90 109. 7" Fenton Lions Deep Round Flared Bowl - Mari. (scarce; satiny with excellent detail)
- 4000 110. **9" FENTON THISTLE FLAT PLATE - GREEN (IF YOU DO NOT WANT A SUPER FENTON ITEM DO NOT BID ON THIS PLATE - CAUSE IT WOULD BE WAY ABOVE YOUR STANDARDS)**
- 5500 111. **9" FENTON THISTLE FLAT PLATE - AMY. (SAME OPINION LIKE THE ABOVE ITEM)**
- 250 112. 10" Fenton Dragon and Strawberry Deep Round Bowl - Mari. (a very popular pattern in a desirable shape; nice)
- 80 113. Fenton Heart and Trees Interior Butterfly and Berry Exterior Large Footed Master Berry Bowl - Dk. Mari. (very scarce pattern and an attractive example at that)
- 700 114. **FENTON INTERIOR DRAPE BULBOUS ENAMELED WATER PITCHER AND TUMBLER - RUBY RED (NOT CARNIVAL BUT A REALLY DESIRABLE FENTON ITEM; SUPER BASE COLOR WITH A NICE ENAMELED FLORAL DECOR.)**
- 1500 115. **FENTON STAG AND HOLLY SPATULA FTD. LOW RUFFLED BOWL - RED (A SUPER, SUPER EXAMPLE WITH GREAT COLOR AND IRID.)**
- 230 116. **11" FENTON STAG AND HOLLY BALL FTD. LOW RUFFLED BOWL - LIME GREEN (VERY ODD AND RARELY SOLD ITEM IN THIS COLOR)**
- 225 117. 11" Fenton Stag and Holly Ball ftd. Low Ruffled Bowl - Blue (scarce and desirable; a nice example with super detail)
- 300 118. **11" FENTON STAG AND HOLLY BALL FTD. LOW ICE CREAM SHAPED BOWL - OXBLOOD (RARE BASE COLOR - DK. PUR. THAT WANTS TO BE RED)**
- 65 119. 11" Fenton Stag and Holly Ball ftd. Low Ice Cream Shaped Bowl - Pastel Mari. (super Irid.; a real keeper)
- 3750 120. **9" FENTON PERSIAN MEDALLION FLAT PLATE - GREEN (AN EXTREMELY RARE COLOR FOR THIS ITEM; ONLY A FEW KNOWN AND THIS IS NO SLOUCH - COME AND GET IT)**
- 650 121. **FENTON PERSIAN MEDALLION 2 HANDLED BON BON - RED (RARE AND UNDERPRICED ITEM THAT HAS GREAT COLOR AND SATINY IRID.)**
- 180 122. 9" Fenton Persian Medallion Flared Plate - Blue (scarce; irid. is silvery)
- 25 123. Fenton Persian Medallion Small Size 6 Ruffled Stemmed Compote - Mari. (scarce color in a scarce size)
- 45 124. Fenton Grape and Cable Ftd. Ruffled Small Size Fruit Bowl with Persian Medallion Interior - Mari. (nice color; satiny)
- 500 125. **FENTON HOLLY GOBLET SHAPED STEMMED COMPOTE - RED (RARE; DESIRABLE WITH SUPER COLOR AND NICE IRID.)**
- 600 126. **FENTON HOLLY GOBLET SHAPED STEMMED COMPOTE - LIME GREEN OPAL. (ABSOLUTELY SUPER EXAMPLE WITH LOTS AND LOTS OF OPAL.)**
- 135 127. Fenton Holly Goblet Shaped Stemmed Compote - Lime Green (scarce base color with a nice finish)
- 125 128. Fenton Holly Goblet Shaped Stemmed Compote - Powder Blue / Mari. (scarce base color with a nice overlay)

- 170 129. Fenton Holly Goblet Shaped Stemmed Compote - Vaseline / Mari. (desirable base color in this shape)
- 125 130. **FENTON HOLLY GOBLET SHAPED STEMMED COMPOTE - GREEN (ANOTHER SCARCE SHAPE FOR THIS ITEM IN THIS COLOR)**
- 50 131. Fenton Holly Goblet Shaped Stemmed Compote - Blue (nice color and Irid.)
- 15 132. Fenton Holly Goblet Shaped Stemmed Compote - Mari.
- 500 133. **9 1/2" FENTON HOLLY FLAT PLATE - AMY. (SUPER EXAMPLE OF THIS UNDERPRICED FENTON ITEM)**
- 350 134. **9 1/2" FENTON HOLLY FLAT PLATE - BLUE (REALLY NICE COLOR AND IRID.)**
- 155 135. 9 1/2" Fenton Holly Flat Plate - Mari. (nice, desirable color and irid.)
- 1059 136. **9-9 1/2" FENTON HOLLY RUFFLED BOWL - RED (HEY YOU GUYS!!.. YA'LL BETTER WAKE UP AND TAKE A LOOK AT RED AGAIN!)**
- 375 137. **7 1/2" FENTON ACORN RUFFLED BOWL - RED (DESIRABLE; AFFORDABLE AND NICE)**
- 450 138. **FENTON BLACKBERRY SPRAY CRIMPED EDGE J.I.P. HAT - RED (GREAT SHAPE AND GREAT COLOR AND SATINY)**
- 310 139. Fenton 2 Row Open Edge Ruffled Hat - Red (it's getting so you don't even see these for sale anymore) ✕
- 300 140. **FENTON 2 ROW OPEN EDGE 2 SIDED HAT - REVERSE AMBERINA OPAL. (RARE AND VERY DESIRABLE; OPAL. TIPS)**
- 300 141. **FENTON 2 ROW OPEN EDGE 2 SIDED HAT - ICE BLUE (RARE AND VERY DESIRABLE COLOR AND SHAPE; NICE PASTEL FINISH)**
- 270 142. **FENTON 2 ROW OPEN EDGE 2 SIDED HAT - WHITE (ANOTHER SCARCE ITEM; FROSTY WITH REALLY NICE IRID.)**
- 70 143. Fenton 2 Row Open Edge 2 Sided Hat - Mari. / Vaseline (scarce base color with a nice overlay)
- 50 144. Fenton 2 Row Open Edge 2 Sided Hat - Odd Pastel Blue (scarce, odd base color)
- 90 145. Fenton 2 Row Open Edge 2 Sided Hat - Black (very rare base color in this shape)
- 65 146. Fenton 2 Row Open Edge 2 Sided Hat - Smokey Blue (another different base color; scarce)
- 85 147. Fenton 2 Row Open Edge 2 Sided Hat - <sup>Aqua</sup> Powder Blue / Mari. (scarce base color with a nice overlay)
- 275 148. **FENTON 2 ROW OPEN EDGE LARGE 4 SIDED SQUARE HAT - ICE GREEN (VERY SCARCE ITEM WITH GREAT COLOR AND IRID.)**
- 425 149. **FENTON 3 ROW OPEN EDGE LARGE 8 RUFFLED BOWL - ICE BLUE (RARE COLOR AND VERY DESIRABLE; NICE COLOR)**
- 1600 150. **FENTON BUTTERFLY AND BERRY FTD. HATPIN HOLDER - BLUE (VERY RARE AND VERY DESIRABLE; GREAT COLOR AND IRID.; REALLY NICE DETAIL - A TOUGHIE)**
- 900 151. **FENTON BUTTERFLY AND BERRY FTD. HATPIN HOLDER - MARI. (ANOTHER RARE FENTON ITEM; SATINY WITH REALLY NICE DETAIL)**
- 135 152. **10" FENTON BUTTERFLY AND BERRY SWUNG VASE - AMBER (RARE BASE COLOR FOR THIS PATTERN)**
- 90 153. 9" Fenton Butterfly and Berry Swung Vase - Pur. (rare base color to find; small chip on base)
- 55 154. Fenton Butterfly and Fern Tumbler - Amy. (satiny irid.)
- 650 155. **FENTON BLUEBERRY BULBOUS HANDLED WATER PITCHER - BLUE (RARE AND VERY DESIRABLE; NICE COLOR AND IRID.)**
- 475 156. **FENTON TEN MUMS 5PC. TANKARD WATER SET - MARI. (RARE AND DESIRABLE SET; NICE COLOR)**
- 475 157. **9" FENTON FINE RIB STANDARD SWUNG VASE - RED (RARE AND ALWAYS DESIRABLE; GREAT COLOR)**
- 100 158. 9" Fenton Fine Rib Standard Swung Vase - Green (very scarce base color; tough to find)
- 100 159. 10" Fenton Fine Rib Standard Swung Vase - Sapphire Blue (scarce base color with a nice overlay)
- 1100 160. **18" TALL X 5 1/8" BASE FENTON RUSTIC SWUNG FUNERAL VASE - WHITE (RARE AND VERY DESIRABLE ITEM WITH A GREAT 7" FLARE; NICE AND FROSTY)**
- 1409 161. **17 1/4" TALL X 5 1/8" BASE FENTON RUSTIC SWUNG FUNERAL VASE - GREEN (ANOTHER SUPER ITEM WITH A NICE 7 3/4" FLARE; GREAT COLOR)**
- 1500 162. **17" TALL X 5 1/8" BASE FENTON RUSTIC SWUNG FUNERAL VASE - AMY. (ANOTHER NICE ITEM; HAS A 8" FLARE)**
- 850 163. **20" TALL X 5 1/8" BASE FENTON RUSTIC SWUNG FUNERAL VASE - BLUE (VERY SCARCE AND VERY DESIRABLE; NICE COLOR AND IRID.)**
- 700 164. 18 1/2" Tall x 5 1/8" Base Fenton Rustic Swung Funeral Vase - Mari. (very scarce with a nice satiny finish)
- 525 165. 18" Tall x 5 1/4" Base Fenton Rustic Swung Funeral Vase with Plunger Base - Amy. (great mold and color but damaged on edge; a nice show piece)
- X 166. 8-8 1/2" Fenton Peacock and Grape Round Bowl - Lavender (scarce base color in a great shape)
- 225 167. **8-8 1/2" FENTON DRAGON AND LOTUS ICE CREAM SHAPED BOWL - AMBER OPAL. (RARE BASE COLOR WITH OPAL IN THE EDGE; AN ODDBALL)**
- 120 168. 8 - 8 1/2" Fenton Dragon and Lotus Ice Cream Shaped Bowl - Lavender (scarce with nice color and irid.)
- 50 169. 9" Fenton <sup>Vintage Blue</sup> Dragon and Lotus Ice Cream Shaped Bowl - ~~Lavender~~ (scarce with nice color and irid.)
- 525 170. **9" FENTON HEART AND VINE FLAT PLATE - BLUE (VERY SCARCE AND VERY DESIRABLE; GREAT DETAIL AND IRID.)**
- 350 171. **FENTON ORANGE TREE HANDLED LOVING CUP - GREEN (RARE AND DESIRABLE COLOR FOR THIS ITEM; NICE)**
- 300 172. Fenton Orange Tree Handled Loving Cup - Blue (scarce and desirable; nice color and irid.)
- 250 173. Fenton Orange Tree Handled Loving Cup - Mari. (scarce and desirable; nice color and irid.)
- 325 174. Fenton Orange Tree Handled Loving Cup - White (scarce color; nice average color and irid.)
- 1700 175. **9" FENTON ORANGE TREE FLAT PLATE - GREEN (RARE AND DESIRABLE COLOR FOR THIS ITEM; HAS A CHIP ON THE BASE)**
- 500 176. **9" FENTON ORANGE TREE FLAT PLATE - BLUE (A REALLY NICE EXAMPLE WITH BRIGHT IRID.; YOU'D LIKE IT)**
- 250 177. 9" Fenton Orange Tree Flat Plate - Mari. (very scarce with nice color and irid.)
- 175 178. 9" Fenton Orange Tree Flat Plate - White (very scarce; frosty with nice irid.)
- 280 179. **FENTON ORANGE TREE STEMMED RUFFLED COMPOTE - GREEN (ACTUALLY QUITE A RARE COLOR FOR THIS ITEM; A REAL TOUGHIE)**
- 220 180. **FENTON ORANGE TREE STEMMED RUFFLED COMPOTE - MARI. / VASELINE (SUPER BASE COLOR; BRIGHT AND VERY DESIRABLE)**
- 220 181. **FENTON IRIS STEMMED 6 RUFFLED COMPOTE - WHITE (VERY RARE COLOR FOR THIS PATTERN; NOT OFTEN SOLD)**
- 65 182. Fenton Iris Stemmed 6 Ruffled Compote - Mari. (nice color)
- 75 183. Fenton Wine and Roses Stemmed Ruffled Compote - Mari. (scarce pattern; nice color and detail)
- 35 184. Fenton Heart and Vine 6 Ruffled Bowl - Mari. (nice color and irid.)
- 1400 185. **FENTON PRISM BAND / ENAM. FORGET ME NOT 4 PC. TANKARD WATER SET - BLUE (RARE AND DESIRABLE; SUPER COLOR AND ENAM. DECOR..)**
- 120 *Captain Rose bowl CR bowl green*

- 900 186. FENTON PRISM BAND / ENAM. FORGET ME NOT TANKARD WATER PITCHER - DK. MARI. (VERY SCARCE ITEM; DARK, BRIGHT AND SATINY)
- 175 187. 6" FENTON LITTLE FLOWERS FLAT PLATE - DK. MARI. (SCARCE ITEM; NICE COLOR AND IRID.)
- 125 188. Fenton Mikado Large Round Stemmed Compote - Mari. (scarce item with nice color and irid.)
- 65 189. Fenton Scotch Thistle Stemmed Ruffled Crimped Edge Compote - Green (scarce item with a nice look)
- 55 190. Fenton Birds and Cherries Stemmed Ruffled Compote - Green (scarce color; nice)
- 60 191. Fenton Birds and Cherries Stemmed Ruffled Compote - Amy. (scarce; nice)
- 130 192. Sowerby Hen on the Nest Covered Butter Dish - Mari. (scarce)
- 27 1/2 193. (maker?) Concave Diamond Jar with Metal Rim - Mari. (odd item)
- 10 194. (maker? - Imperial?) Laurel Band ftd. Tumbler - Green / Mari. (unusual base color)
- 750 195. WESTMORELAND CHECKERBOARD HANDLED WATER PITCHER - AMY. (RARE AND EXTREMELY DIFFICULT TO FIND, AND ALTHOUGH USUALLY SILVERY THIS IS ONE OF THE BETTER EXAMPLES)
- 85 196. WESTMORELAND CHECKERBOARD TUMBLER - AMY. (RARE AND DESIRABLE WITH TYPICAL IRID. AND QUALITY)
- 110 197. Westmoreland Smooth Rays Low 6 Ruffled Stemmed Compote - Blue Opal. (scarce base color)
- 95 198. 8 1/2" Westmoreland Pearly Dots 6 Ruffled Bowl - Blue Opal. (really scarce base color with a nice overlay)
- 25 199. 8" Westmoreland Pearly Dots Round Bowl with Tight C.R.E. - Amy. (nice irid.)
- 200 200. 5 1/4" TALL X 4 1/4" BASE IMPERIAL ZIPPER LOOP SMALL FINGER LAMP - SMOKE (RARE AND EXTREMELY DESIRABLE; RARE SIZE RARE COLOR AND HAS GREAT IRID.)
- 1600 201. 5" TALL X 3 1/2" BASE IMPERIAL ZIPPER LOOP SMALL FINGER LAMP - DK. MARI. (ANOTHER VERY RARE SHAPE IN RARE SIZE WITH GREAT COLOR)
- 325 202. 8 1/4" TALL X 4 3/4" BASE IMPERIAL ZIPPER LOOP FINGER LAMP - MARI. (THE 3rd OF 3 REALLY TOUGH AND DESIRABLE ITEMS)
- 45 203. 7" Imperial Heavy Grape Flat Plate - Vaseline / Mari. (really unusual base color and glows like crazy!)
- 15 204. 7" Imperial Heavy Grape Flat Plate - Pur. (super scarce with great color and irid.)
- 675 205. IMPERIAL WINDMILL HANDLED MILK PITCHER - PUR. (VERY RARE AND VERY DESIRABLE; A GREAT EXAMPLE WITH BRIGHT IRID.)
- 275 206. Imperial Grape Handled Water Pitcher - Pur. (very scarce with great irid.)
- 450 207. IMPERIAL SIX SIDED CANDLESTICK - PUR. (VERY SCARCE WITH GREAT IRID.)
- 165 208. 11" Imperial Grape Large Ruffled Bowl - Pur. (super color and super irid.)
- 65 209. Imperial Flute Toothpick Holder - Pur. (scarce; really nice)
- 200 210. IMPERIAL EMBOSSED SCROLL MINIATURE STEMMED 6 RUFFLED COMPOTE - PUR. (VERY SCARCE ITEM IN THIS SIZE; HAS GREAT BASE COLOR WITH BRIGHT IRID.)
- 80 211. Imperial Embossed Scroll Stemmed Ruffled Compote - Pur. (super color and super irid.; really nice)
- 95 212. Imperial Embossed Scroll Stemmed Ruffled Compote - Amber (a very scarce and unusual base color; super irid.)
- 525 213. 9" IMPERIAL EMBOSSED SCROLL FLAT PLATE - LAVENDER (QUITE UNUSUAL COLOR FOR THIS ITEM; REALLY NICE)
- 325 214. 9" IMPERIAL EMBOSSED SCROLL FLAT PLATE - PUR. (DESIRABLE ITEM WITH SUPER IRID.)
- 215 215. Imperial Embossed Scroll Flat Plate - Mari. (very scarce item with bright irid.)
- 175 216. 6" IMPERIAL GRAPE FLAT PLATE - PUR. (VERY SCARCE WITH SUPER IRID.; A SUPER EXAMPLE)
- 75 217. 6" Imperial Grape Flat Plate - Green (scarce item; average irid.)
- 15 218. 6" Imperial Grape Flat Plate - Mari. (nice example)
- 155 219. Imperial Grape Water Carafe - Amy. (scarce with great base color and irid.)
- 500 220. IMPERIAL CHATELAIN HANDLED WATER PITCHER AND (2) TUMBLERS - PUR. (VERY RARE AND DESIRABLE WITH SUPER IRID.; SELLING PITCHER SEPARATE FROM TUMBLERS)
- 235  
205 x 2 221. Imperial Heavy Grape Handled Nappy - Pur. (scarce with great color and irid.)
- 65 222. Imperial Flute Handled Nappy - Pur. (very unusual; is the blank for the above)
- 260 223. 6" Imperial Three in One Plate - Mari. (scarce with great irid.)
- 55 224. Imperial Lustre Rose Tumbler - Pur. (scarce with super irid.)
- 125 225. 5 1/2" Imperial Miniature Morning Glory Swung Vase - Pur. (scarce and very desirable with great irid.)
- 165 226. 6 1/2" TALL IMPERIAL MINIATURE MORNING GLORY SWUNG VASE - HOREHOUND (VERY RARE COLOR COMBINATION THAT HAS REALLY NICE IRID.)
- 145 227. 5" Tall Imperial Miniature Morning Glory Swung Vase - Smoke (scarce and desirable; has super irid.)
- 35 228. Imperial Octagon Stemmed Cordial - Mari. (very rare sized item; has a chip on the base)
- 110 229. Unusual Double Mint Dish with a Silver Plate Holder and (2) Diamond Rings Ruffled Sauces - Dk. Mari. (a nice novelty item that's attractive)
- 95 230. Imperial Field Flower Tumbler - Violet (very scarce base color with nice irid.)
- 10 x 4 231. (4) Imperial Royalty Handled Punch Cups - Mari. (quite scarce; selling so much each)
- 65 232. 7" Imperial Open Rose Deep Round Bowl - Pur. (super irid.)
- 300 233. U.S. GLASS COSMOS AND CANE DOMED RUFFLED COMPOTE - PUR. (EXTREMELY RARE COLOR FOR THIS PATTERN; IT DOES HAVE A SMALL CHIP ON THE BASE)
- 45 234. 12" Northwood Stretch Flared Plate with Ribbed Exterior - Celeste Blue (attractive item)
- 1100 235. MILLERSBURG OHIO STAR FLARED VASE - AMY. (VERY RARE AND ALWAYS DESIRABLE; SATINY IRID.; TOUGH ITEM TO FIND)
- 650 236. MILLERSBURG HOBSTER AND FEATHER GIANT ROSE BOWL - GREEN (ANOTHER VERY RARE AND VERY DESIRABLE ITEM; SATINY WITH AN OPEN BUBBLE ON THE BASE)
- 1800 237. 6" TALL MILLERSBURG HOBSTER AND FEATHER STEMMED ICE CREAM SHAPED COMPOTE - DK. MARI. (PROBABLY AS RARE AS ANY ITEM IN THE AUCTION; DARK AND PERFECT - REALLY NICE)
- 500 238. 10" Tall Millersburg Swirl Hobnail Swung Vase - Green (very scarce especially in this color; nice item with nice irid.)
- 400 239. 10" Tall Millersburg Swirl Hobnail Swung Vase - Amy. (another scarce item with nice color and irid.)
- 375  
400 240. MILLERSBURG SWIRL HOBNAIL SPITTOON - PUR. (RARE AND VERY DESIRABLE; GREAT COLOR AND IRID. AND PERFECT) \*
- 475 241. MILLERSBURG SWIRL HOBNAIL SPITTOON - MARI. (ANOTHER VERY SCARCE ITEM WITH NICE SATINY IRID. AND PERFECT) \*
- 225 242. 9 1/2" Millersburg Nesting Swan 6 Ruffled Bowl - Green (scarce and popular item that has a satiny finish)

- 115 243. Millersburg Boutonniere Stemmed Ruffled Compote - Green (scarce; radium and nice)
- 85 244. Millersburg Boutonniere Stemmed Ruffled Compote - Mari. (scarce; radium and nice)
- 900 245. 7" TALL MILLERSBURG ROSILAND STANDARD STEMMED RUFFLED COMPOTE - AMY. (VERY RARE AND UNDERPRICED WITH A REALLY NICE SATINY FINISH)
- 95 246. Millersburg Peacock Tail Variant Stemmed 6 Ruffled Compote - Amy. (super radium finish)
- 50 247. Millersburg Peacock Tail Variant Stemmed 6 Ruffled Compote - Mari. (attractive item with nice irid.) \*
- 35 248. Millersburg Marylin Tumbler - Amy. (scarce item with nice color and irid.)
- 215 249. Millersburg Feather and Heart Tumbler - Green (rare base color for this pattern; tough to find) - 200
- 775 250. 8 1/2" MILLERSBURG BIG FISH 6 RUFFLED BOWL - GREEN (RADIUM AND VERY RARE AND DESIRABLE; BRIGHT GOLD HIGHLIGHTS)
- 600 251. 9 1/2" MILLERSBURG MANY STARS 6 RUFFLED BOWL - AMY. (RARE AND RADIUM; SUPER EXAMPLE)
- 135 252. 9" Millersburg Fleur de Lei Domed ftd. Ice Cream Shaped Bowl - Green (scarce item with this shape; may have a chip on the base)
- 325 253. 6" MILLERSBURG ISAAC BENESCH 6 RUFFLED ADVERTISING BOWL - AMY. (POPULAR ADVERTISING ITEM WITH NICE SATINY IRID.)
- 500 254. MILLERSBURG WILD ROSE MID SIZE KEROSENE LAMP - MARI. (THE ITEM HAS A DAMAGED FRONT, BUT JUST GO FIND ONE)
- 475 255. 10" MILLERSBURG PEACOCK AT THE URN LARGE ICE CREAM BOWL - GREEN (SCARCE AND DESIRABLE - SATINY WITH NICE DETAIL)
- 105 256. 5" Millersburg Peacock at the Urn Individual Berry Bowl - Amy. (scarce with a radium finish)
- 225 257. 5" Millersburg Peacock Proof Deep Flared Individual Berry Bowl - Amy. (very scarce item with a nice radium finish)
- 130 185 258. 5 1/2" MILLERSBURG STRAWBERRY WREATH LOW RUFFLED CRIMPED EDGE FLARED SAUCE - AMY. (AN ATTRACTIVE RADIUM ITEM WITH A CRIMPED EDGE)
- 275 259. 9" MILLERSBURG PRIMROSE ICE CREAM SHAPED BOWL - GREEN (ATTRACTIVE RADIUM ITEM IN A RARE AND DESIRABLE SHAPE)
- 1300 260. 10" MILLERSBURG LITTLE STARS LARGE ICE CREAM BOWL - AQUA (EXTREMELY RARE SIZE AND COLOR FOR THIS SATINY ITEM)
- 350 261. 6" TALL X 8 1/2" DIAMETER CAMBRIDGE INVERTED STRAWBERRY LARGE STEMMED ROUND COMPOTE - AMY. (AN ITEM THAT'S GETTING TOUGH TO FIND; NICE)
- 75 262. Dugan Open Opal (Beaded Panel) Stemmed Tri-Cornered Stemmed Compote - Pur. Opal. (nice opal.)
- 80 263. Dugan Folding Fan Crimped Edge 2 Sided Compote - Pur. Opal. (nice shape and opal.)
- 175 264. Dugan Folding Fan Crimped Edge Round Compote - Pur. Opal. (nice opal.)
- 950 265. 12" TALL DUGAN PULLED LOOP SWUNG VASE - CELESTE BLUE (VERY RARE COLOR FOR THIS PATTERN; GREAT STRETCH EFFECT)
- 225 266. 6" DUGAN JEWEL HEART EXTERIOR CRIMPED EDGE HANDLED BASKET - P. OPAL. (A RARE MINIATURE THAT'S PERFECT WITH GREAT COLOR AND OPAL.)
- 100 267. Dugan Paneled Cherry ftd. Ruffled Bowl - Pur. (scarce with really nice irid.) \*
- 105 268. 6" Dugan Cherries Crimped Edge Plate with Jeweled Heart Exterior - Pur. (scarce shape with really nice irid.)
- 55 269. 6" Dugan Cherries low Ruffled Plate with Jeweled Heart Exterior - Pur. Opal. (scarce with nice opal and a satiny finish)
- 525 270. 10" DUGAN WISHBONE AND SPADES 8 RUFFLED BOWL - PUR. (VERY SCARCE ITEM TO FIND; REALLY NICE COLOR AND IRID.)
- 1700 271. DUGAN DAHLIA 7 PC. FTD. WATER SET - DARK MARI. (RARE SET IN ALMOST ANY COLOR; WELL MATCHED AND PERFECT)
- 10 272. 6" Dugan Flowers and Beads (Ext.) Flat Plate - Pur. Peach Opal. (scarce with nice opal.) \*
- 225 273. 9" Dugan Apple Blossom Twigs Low Ruffled Plate - Pur. (scarce with really nice irid.)
- 50 274. Dugan Starfish Stemmed 8 Ruffled Compote - Pur. Peach Opal. (nice opal.)
- 65 275. 10" Dugan Ski Star Large Ruffled Bowl with Compass Exterior - Pur. Opal. (nice opal; satiny)
- 55 276. 9" Dugan Vining Twigs Swung Vase - Mari.
- 100 277. 6" TALL X 6" FLARED DUGAN TARGET SQUATTY FLARED VASE - WHITE (VERY SCARCE SIZE AND SHAPE, FROSTY AND NICE)
- 400 278. 13 3/8" TALL X 3 15/16" BASE IMPERIAL RIPPLE MID SIZE SWUNG VASE - YELLOW / MARI. (VERY RARE BASE COLOR; BRIGHT YELLOW BUT DOES NOT GLOW)
- 45 279. Imperial Pansy Oval Relish Tray - Pastel Mari. (super irid.)
- 325 280. FENTON STRETCH 2 PC. GUEST SET - VELVA ROSE (RARE AND POPULAR ITEM; PERFECT WITH A NICE FINISH)
- 400 281. FENTON STRETCH 2 PC. GUEST SET - GRECIAN GOLD / COBALT (ANOTHER RARE AND DESIRABLE; PERFECT AND NICE)
- 60 282. Jenkins Cut Flowers Vase made into a Lamp - Dk. Mari. (very unusual and attractive item; nice) - 150
- 125 283. CONSOLIDATED FLORETTE COVERED CRACKER JAR - MARI. (RARE ITEM TO FIND IN THIS COLOR; HAVEN'T SEEN MANY)
- 27 1/2 284. European (?) Intaglio Large Ice Cream Shaped Bowl - Dk. Mari. (great color and irid.; really nice)
- 25 285. Westmoreland ABC Stork Cereal Bowl - Mari. (actually quite a nice example; great detail and irid.)
- 350 Celeste 2pc Rust set

## ADVANCE AUCTION NOTICE

### Carnival Glass Auction

Saturday, July 19, 2003

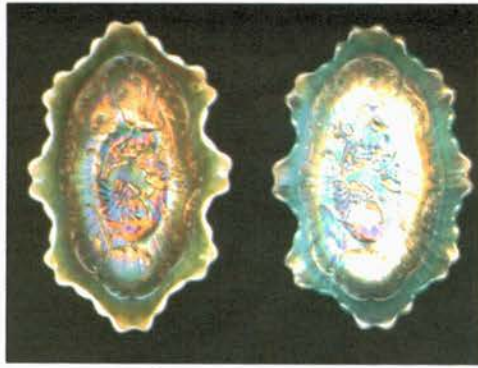
at the Knights of Columbus Building  
West Washington Blvd.  
Bath, NY 14810

**Another auction of hundreds of misc. items;  
all shapes, sizes and conditions.**





Lot #114



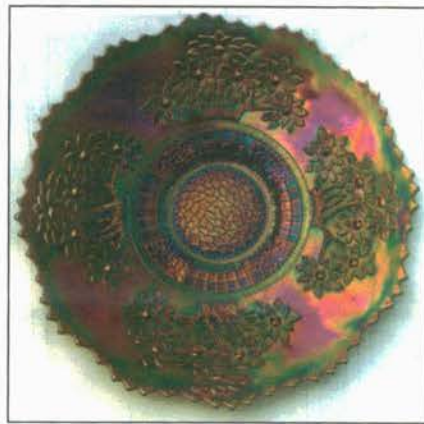
Lots #35, 36



Lots #196, 195



Lot #100



Lot #176



Lot #120



Lot #236



Lot #150



Lot #155



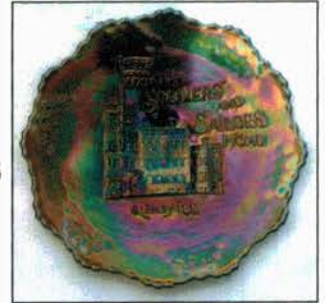
Lot #186

Lot #103



Lots 200, 201

Lot #106



Lot #70



Lot #15



Lot #91



Lot #104



Lot #115



Lot #105



**Burns Auction Service**

P.O. Box 608  
Bath, New York 14810

First Class  
US Postage  
**PAID**  
Permit No. 7  
Hammondsport, NY

**2003 A.C.G.A. Convention Auction!**



Lot #237

LEE MARKLEY  
BOX 306  
MENTONE IN 46539

46539+0306 04

