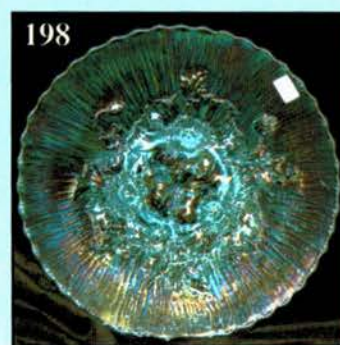
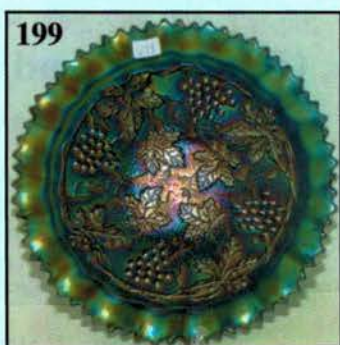
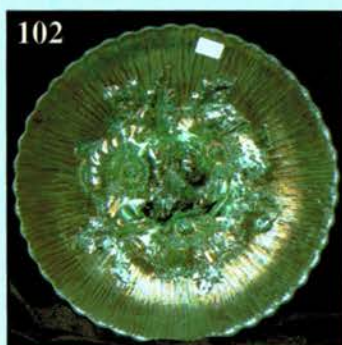
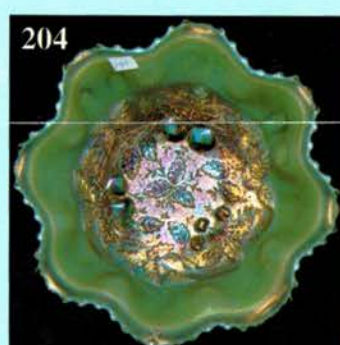
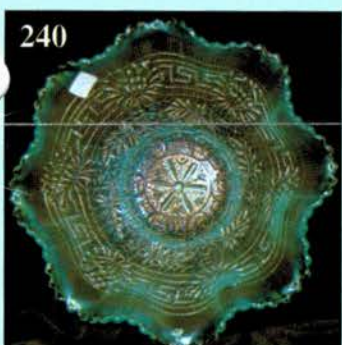
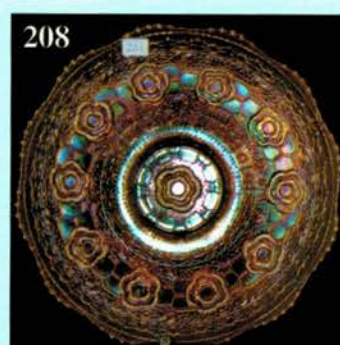


CARNIVAL GLASS AUCTION

Saturday, June 21, 2003 • 9:00 a.m. C.D.T.
★ Raymond and Florence Collection ★



Held By the Mickey Reichel Antique & Auction L.C.

Office: 660-882-5292 • Home: 660-882-5283

☛ WEB SITE: <http://www.yourauctionpage.com/reichel>

E-mail: mreichel@undata.com

Held Inside the Mickey Reichel Auction Center

1 Mile North of I-70 on Hwy. 5, Exit 101, Boonville, Missouri • 20 Miles West of Columbia, MO on I-70

Preview Friday 12 p.m. - 5 p.m. and 7:30 a.m. - 9:00 a.m. Day of Auction



TERMS: Cash or Good Check, VISA and MasterCard accepted.



3% Clerking Fee on all purchases except for payment of cash or check. Proper I.D. required.

WEB SITE: www.yourauctionpage.com/reichel

ABSENTEE BID POLICY:

WRITE IN BIDS: If you are unable to attend the auction, we will be happy to accept absentee bids which must be received by THURSDAY, JUNE 19, 2003. Don't Delay. E-Mail: mreichel@undata.com

FOR AUCTION PRICE RESULTS: Send \$3.00 and Large S.A.S.E. to 516 Third Street, Boonville, MO 65233-1536

PLEASE NOTE: There is a **\$5 handling charge for each successful bid which will be added to the selling price** for all write-in bids. This is in addition to the cost of postage, insurance and packing. Your write-in bid will be entered just as if you are present and bidding. **Successful bidders will be notified in 1 to 3 days by the auctioneer (so be sure to include your phone number).** Direct mail bids to Auctioneer **Mickey Reichel, 516 Third Street, Boonville, MO 65233-1536.** Terms: Cash or Check accepted with proper I.D. and Social Security Number and References. Announcements made day of the auction supercede all printed material. Not Responsible for Accidents or Sold Items.

No return on any items once they leave the Auction Center (No Exceptions).****

Call for additional information: 660-882-5292 days or 660-882-5283 evenings before 9:00 p.m.

FAX: 660-882-5292 (evening hours start FAX transmission after beep)

MAIL BIDS: Items are bid on in perfect condition with average or above iridescence OR as listed in the brochures. Bids will not be carried out when damage on an item has been found during the auction.

PEOPLE PRESENT AT AUCTION ARE RESPONSIBLE FOR FINDING ANY PINHEADS, WEAR, SPOTTINESS, MANUFACTURER'S DEFECTS OR ANY OTHER MINOR FLAWS, ETC. *****

NOTE: Read each line, as we have accentuated the type of no particular piece, all are special.

Make Reservations EARLY at one of these local motels:

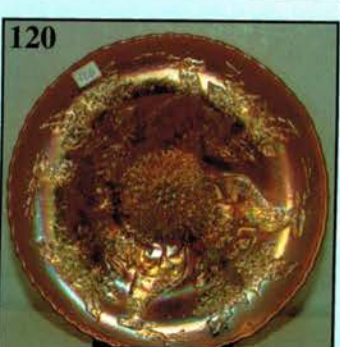
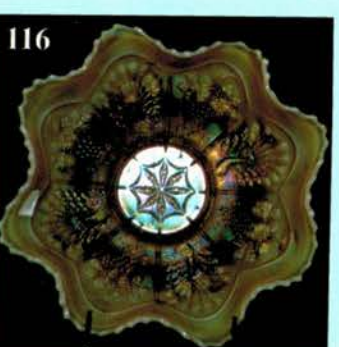
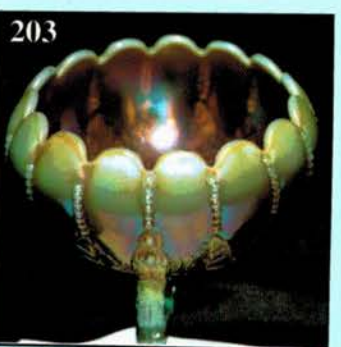
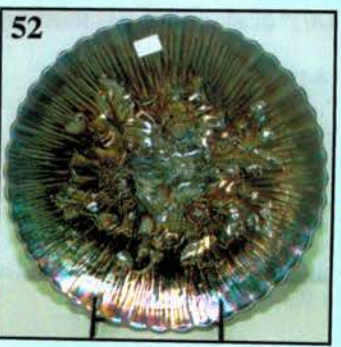
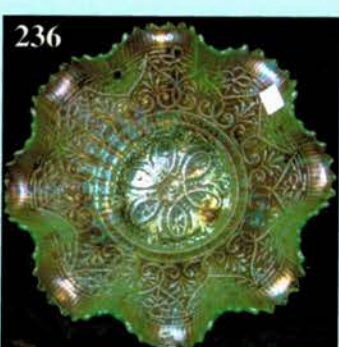
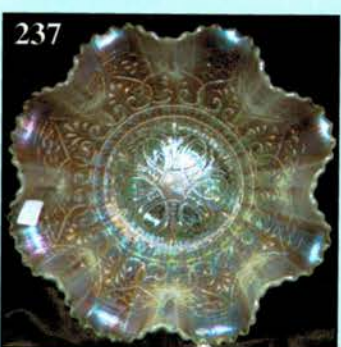
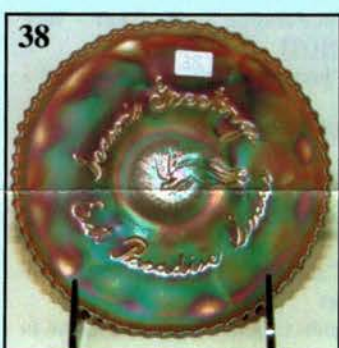
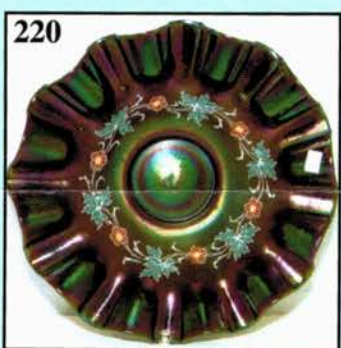
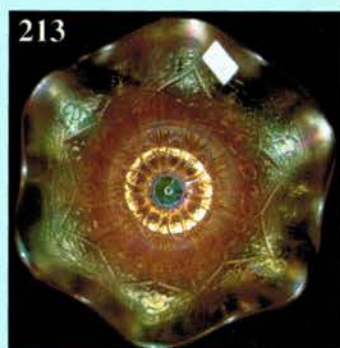
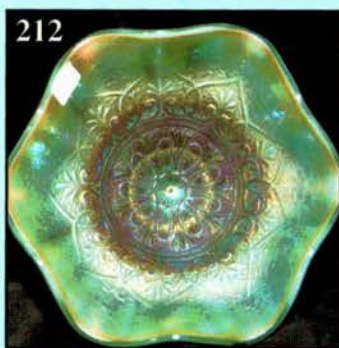
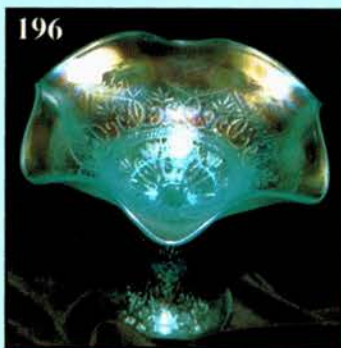
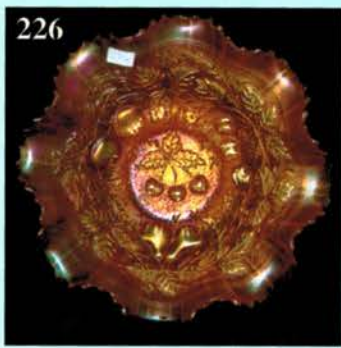
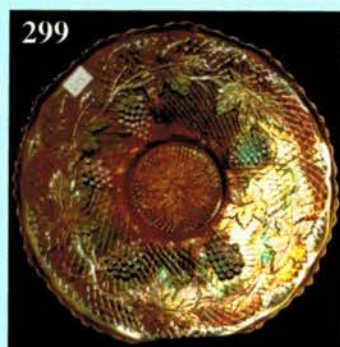
Days Inn: 660-882-8624 • Comfort Inn: 660-882-5317 • Super 8: 660-882-2900 • Holiday Inn: 660-882-6882

Auction Consists of Rarity, Great Irid. and Variety

THANK YOU FOR ATTENDING TODAY

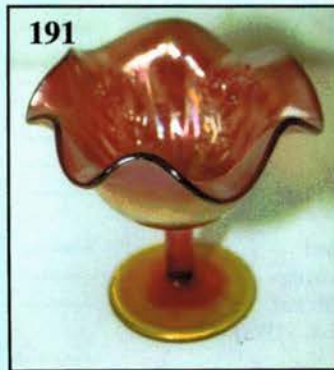
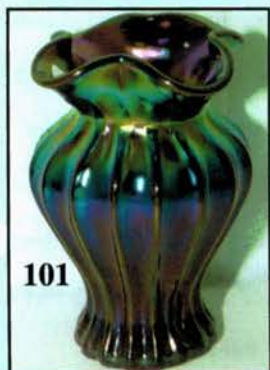
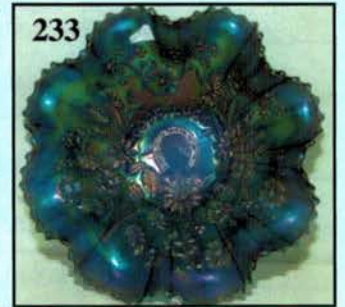
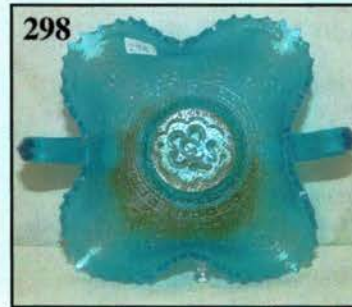
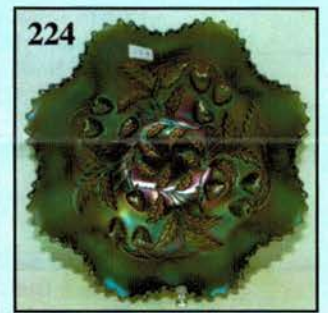
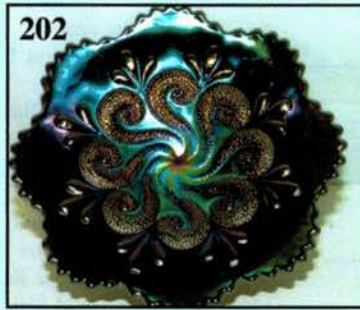
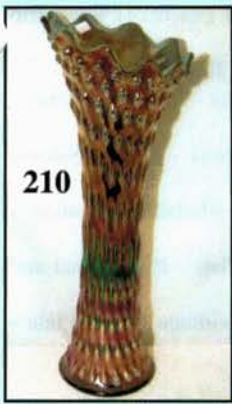
1. M - Fenton Squatty 4-3/4" Boggy Bayou Vase - 3-3/8" Base, 4-1/2" Top
2. Teal - Westmoreland Corinth 9-1/2" Vase - Great Color
3. P - Westmoreland Corinth - 9-1/4" Vase
4. P - Dugan Spiralex 10-1/2" Vase - Uncommon Color
5. M - Dugan Spiralex 12-1/4" Vase - Nice Irid.
6. G - Fenton Diamond and Rib Vases - Choice A or B - Above Average
7. M - Imp. Mini Morning Glory 4-1/2" Vase - Pumpkin! - 3-1/2" Opening
8. Rich G - Imp. Mini Morning Glory 5" Vase - Very Scarce and Nice - 3-1/2" Opening
9. Pumpkin M - Imp. Mini Morning Glory 7" Vase
10. PO - Dugan 6-1/2" Pinched Swirl Vase - Fantastic Example
11. Deep B - Fenton Mid-Size 14-3/4" Fine Rib Vase - Top Notch
12. Scarce Dark Smoke - Imp. Smooth Panels 10-1/4" Funeral Vase - 4-1/2" Base, 7-1/4" Flared Opening
13. M - Australian 10" Mid-Size Gum Tips Vase - 4" Base, 5" Opening - Scarce Radium
14. G - Imp. 8" Mid-Size Ripple Vase - 3-3/8" Base, 5-1/4" Opening
15. BA - Imp. 7" Mini Morning Glory Vase - Not Iridized - Never Seen One Before!
16. G - N 6" Tornado Vase - Tiny Flea Bites Around Marie - Still Scarce
17. M - Fenton 10-3/4" Diamond and Rib Vase - Dark Example
18. G - Mlbg. (?) Hobnail Vt. Mid-Size 12" Funeral Vase - 4" Base, 6" Flame Top - Nice
19. M - Fenton 10" Rustic Vase - Better Example
20. M - Imp. Ripple 19-1/2" Swung Vase - Great Size and Color - Rim Peeling

21. M - N Feathers 10-1/2" Vase - Vt. Starred Base, Which Is Clear
22. M - N Diamond Point 10-3/8" Vase Pumpkin with Great Iridescence
23. Pumpkin M - N 9-1/4" Tree Trunk Vase - Base Damage
24. B - N Singing Birds Mug - Electric Highlights
25. P - N Singing Birds Mug - Multi Electric
26. Electric B - Fenton Orange Tree Mug - 2-1/2" Base - Fabulous!
27. M - Fenton Orange Tree Mug - 2-1/2" Base - Above Average Piece
28. True Lavender - N Singing Birds Mug - Hard To Find This Nice
29. M - N Dandelion Mug - First Rate Example
30. W - N 9-3/8" Rose Show Plate - Lots of Blues
31. Dark M - N 8-3/4" Ruffled Strawberry Bowl - BW Ext.
32. M - N 8-3/4" Strawberry Plate - Smooth Ext.
33. G - N 8-3/4" Ruffled Strawberry Bowl - BW Ext.
34. Pastel M - N PCE Strawberry Bowl - Smooth Ext. - Scarce Shape
35. M - N Ftd. Ruffled 8-1/2" Wishbone Bowl
36. G - N Ftd. Ruffled 7-3/4" Wishbone Bowl - Way Above Average Color
37. B - 9-1/4" Peacock At Urn Plate - Always In Demand
38. A - Fenton 6-1/4" "Eat Paradise Sodas" Plate - Very Nice - Advertising Is HOT!
39. A - Millersburg 6" "Isaac Benesch" Ruffled Bowl - Above Average Irid.
40. A - N 9" Grape and Cable Plate - BW Ext. - Multi Radium Iridescence
41. A - N 8-3/4" Three Fruits Plate - BW Ext.
42. Super M - N Grape and Cable Banana Bowl - Loaded with Hot Pinks
43. P - N Grape and Cable Water Pitcher and Four Tumblers - Sold As Set
44. M - N Grape and Cable Cracker Jar - The Color Is There!
45. Renninger B (?) - N Grape and Cable Stippled Tobacco Humidor - Pretty - One Prong Missing (So?)
46. A - N Acorn Burrs Butter Dish with Lid - Extra Nice Rarity
47. M - N Acorn Burrs Butter Dish with Lid - Also Nice
48. M - N Embroidered Mums 9" Ruffled Bowl - Scarce Color, Attractive Pattern
49. G - N Nippon 8-3/4" Ruffled Bowl - BW Ext.
50. P - N Poinsettia and Lattice Ftd. Ruffled 8-3/4" Bowl - Electric Center
51. P - N 8" Rosette Ftd., Ruffled Bowl
52. B - N 9-1/2" Flat Poppy Show Plate - Sm. Chip On Top of Marie - Still Great Item
53. M - N 6", 6 Ruffle Fruits and Flowers Bowl - BW Ext.
54. P - N 6", 6 Ruffle Fruits and Flowers Bowl - Multi Electric - BW Ext.
55. P - N 6", 6 Ruffle Wild Strawberry Bowl - Plain Ext.
56. P - N Collar Base, 9-1/2", PCE Wishbone Bowl - BW Ext. - Scarce Size
57. M - N 5-1/2", ICS Peacock and Urn Bowl
58. B - N 5-3/4", ICS Peacock and Urn Bowl - Fully Stippled
59. W - N Fine Cut and Roses Ftd. Candy Dish - A Beauty
60. PO - Script Signed Northwood - Nautilus Creamer
61. P - N Singing Birds Sugar Bowl - No Lid
62. M - N 9", Round Peacock at Fountain Master Berry Bowl - Loaded with Color
63. M - N Peacock at Fountain Sugar Bowl Lid Only
64. P - N Leaf Beads Rosebowl - Plain Interior - Electric Highlights
65. G - N Leaf Beads Rosebowl - Sunflower Interior
66. P - N Drapery Rosebowl
67. M - N Beaded Cable Rosebowl - Rayed Interior
68. AO - N Leaf Beads Rosebowl - Nice One
69. M - N Fine Cut and Roses Rosebowl - Normal Roughness On Feet
70. P - N Fine Cut and Roses Rosebowl - Norman Roughness On Feet
71. G - N Fruits and Flowers Bonbon - Very Nice Piece
72. P - Imp. Heavy Grape 8-3/4" Berry Bowl - Electric Colors
73. P - Imp. Heavy Grape 6-1/2" Bowl - Also A Beauty
74. A - Imp. 8-1/2, 8 Ruffle Grape Bowl
75. M - Imp. Grape 6-1/2" Plate - Radium Color
76. P - N Grape and Cable Whimsey Compote - Super Example
77. A - N Grape and Cable 8-1/2", 8 Ruffle Bowl - BW Ext.
78. A - N Grape and Cable 8-3/4", PCE Bowl - BW Ext. - Luscious Color
79. P - N Rainbow PCE Bowl - Smooth Ext. - Rainbow Electric - Scarce Shape
80. G - N 10", Ruffled Fruits and Flowers Bowl - Rare Vt. with 4 Cherries (Look At Yours!)
81. W - N 5-1/2" ICS Peacock At Urn Bowls - Choice A or B
82. G - N Blackberry 7", 6 Ruffle Compote - BW Ext. - Really Nice
83. PO - Dugan 6-1/2" Four Flowers Plate - Big Basketweave Ext.
84. BO - Westmoreland 9", 6 Ruffle Carolina Dogwood Bowl - Radium Finish
85. A - Fenton 9-1/4", 12 Sided Three Fruits Plate - Light Rub On Fruit
86. B - Dugan 8-3/4" Apple Blossom Twigs Plate - Seldom Offered
87. Powder Blue Base - Fenton Holly Ruffled Compote - M. Overlay
88. Rich M - Fenton Persian Medallion 9" Ruffled Bowl - Scarce Beaded Berry Ext.
89. Rare M - EDA 5" Rose Garden Rosebowl
90. Rare B - EDA 4-3/4" Rose Garden Rosebowl
91. A - Inverted Thistle 4-1/2" Rd. Bowl - Signed Near - Cut - Radium Beauty
92. Shriners 1909 Louisville Tobacco Leaf Champagne
93. Sapphire - Stretch 5" Dia. Ashtray w/Matchholder - Unusual Piece - Neat Item
94. B - Fenton Kittens 4-1/2" Bowl - 4 Sides Up - Rare and Nice - Rare
95. M - Fenton Kittens 4-1/2", 6 Ruffle Bowl
96. M - Dugan 10-1/2", 6 Ruffle Petal and Fen Bowl - Jewelled Heart Ext.
97. BA - Round Paperweight Signed "Welch" - Age Unknown
98. Scarce G - N 9" Good Luck Plate - Rib Ext.
99. P - Dugan Heavy Iris Tumbler - Real Neat Pattern
100. Fantastic M - Consolidated GWTW Roses and Ruffles Lamp - Electrified - Wow Wee!!



101. Electric P - Imp. 6" Colonial Lady Vase - Superb Example
102. Ice G - N 9-1/4" Poppy Show Plate - Rare Color
103. W - Fenton 8-1/2", Ruffled Leaf Chain Bowl
104. W - Fenton 9-1/2" Leaf Chain Plate - Frosty
105. W - Fenton 9", 6 Ruffle Orange Tree Bowl - Blues and Pinks
106. W - Fenton 9-1/2" Orange Tree Plate - Pastel Beauty
107. M - Fenton 9", Spat. Ftd. Grape and Cable Plate
108. G - Fenton 9", Spat. Ftd. Grape and Cable Plate
109. P - N 9", Spat. Ftd. Grape and Cable Plate - Meander Ext.
110. A - N 9" Stippled Three Fruits Plate - Above Average
111. B - N 9" Stippled Three Fruits Plate - Light Rub On Fruit
112. Rare A - Fenton 8-3/4", 8 Ruffle Peacock At Urn Bowl
113. Rich M - Fenton 8-3/4", 8 Ruffle Peacock At Urn Bowl
114. Lovely M - Fenton 9-3/8" Peacock At Urn Plate
115. B - Fenton 8-3/4", 8 Ruffle Peacock At Urn Bowl - Gold and Silver Tints
116. Rare PO - Fenton 9", Collar Base 8 Ruffle Peacock and Grape Bowl
117. Vas. - Fenton 7", 6 Ruffle Vintage (Grape) Bowl
118. Vas. - Fenton Collar Base, 9", 8 Ruffle Peacock and Grape Bowl - Better Example
119. Vas. - Fenton 8-3/4", 8 Ruffle Thistle Bowl - Not Frequently Seen
120. Dark M - Fenton Spat. Ftd., FLAT 9" Stag and Holly Plate - A Great Find
121. M - Dugan 8-1/2", 6 Ruffle Pony Bowl - Blues and Pinks
122. P - Dugan 8-1/2", 6 Ruffle Pony Bowl - Scarce and Has Great Irid.
123. Pumpkin M - Sowerby Covered Swan Dish - Complete and Sweet!
124. P - Imp. 9", 8 Ruffle Cobblestone Bowl - Super Electric
125. Scarce A - Dugan 10-3/4", 6 Ruffle Ski Star and Compass Bowl
126. BO - Westmoreland 8-1/2", 6 Ruffle Smooth Rays Bowl
127. BO - N 9", 3 in 1 Crimp Netter Roses Bowl - Non-Irid. - Scarce and Nice - WOW!
128. Custard - N 7-1/4" Grape and Cable Plate - BW Ext. - Nutmeg Finish - Non-Irid.
129. Vaseline - Art Stretch 9" Plate - Loaded with Iridescence
130. Vas. - Fenton Small Ruffled Holly Compote - Very Nice Marigold Overlay
131. M - Fenton 9", Ftd., Deep 8 Ruffle Two Flowers Bowl - Outstanding Example
132. M - Mibg. 10", 6 Ruffle Whirling Leaves Bowl - Satin Blues and Pinks
133. Teal Green - Imp. 8-1/4" Heavy Grape Plate - Base Glows Nicely
134. P - N Memphis Fruit Bowl and Base - Popular Pattern
135. M - Imp. Fashion Punch Bowl, Base, Six Cups - Nice One
136. Rich M - Fenton Persian Medallion/Wreath Of Roses Round, Flared Punch Bowl and Base
137. M - Fenton Persian Medallion/Wreath Of Roses Punch Cup
138. M - Imp. 474 Round, 6 Scallop Punch Bowl and Base
139. M - Fenton Vintage Int./Wreath Of Roses Ext. Punch Cup
140. B - Fenton Vintage Int./Wreath Of Roses Ext. Punch Cup
141. Fabulous, Huge M - Millersburg Hobstar and Feather Punch Bowl and Base w/13 Punch Cups - What A Set!
142. Beautiful M - N Peacock At Fountain Punch Bowl, Base and Six Cups - Awesome Pink Exterior
143. P - N Grape and Cable Punch Bowl, Base and 6 Cups - Very Desirable
144. G - N Grape and Cable 7 Pc. Water Set - Very Hard To Find
145. P - N Raspberry 7 Pc. Water Set
146. M - N Peacock At Fountain Ruffled, Ftd. Fruit Bowl
147. Dark M - Fenton Lg. Orange Tree Ftd. Fruit Bowl - Great Example
148. B - Fenton Lg. Orange Tree Ftd. Fruit Bowl - Way Above Average
149. M - Fenton Persian Medallion/Grape & Cable Ftd. Large Fruit Bowl - Colorful
150. Scarce B - Fenton Persian Medallion/Grape & Cable Ftd. Large Fruit Bowl - Very Nice
151. G - N Grape & Cable 9-1/4", Rd. Master Berry Bowl - Awesome
152. P - N Acorn Burrs Master Berry Bowl - Outstanding Exterior Irid.
153. P - N Acorn Burrs 5" Berry Bowl
154. P - N Grape and Cable Master Punch Bowl, Base, 6 Cups - Mammoth, Gorgeous Prize, Minor Int. Wear
155. P - N Grape and Cable Water Pitcher - Factory Flaw On Spout
156. P - N Grape and Cable Cracker Jar w/Lid - Seldom Offered
157. P - Imp. 7-1/4" Rd., Flared Lustre Rose Bowl - Nick On Rose
158. G - Cambridge Inverted Feather Cracker Jar with Lid - Desirable Pattern
159. P - Imp. 7-1/2", 8 Ruffle Scroll Embossed Bowl - Plain Ext.
160. Lav. - Imp. 9", 8 Ruffle Scroll Embossed Bowl - Rare File Ext. - Sparkling Color
161. M - Fenton 9", Ftd., Rd. Waterlily Bowl - Astounding Blues, Yellows, Pinks
162. Old M - Imp. Stippled Robin Pitcher
163. Excellent M - Fenton 9-1/2", Ftd., Sq. 8 Ruffle Panther Master Berry Bowl - Incredible Irid.
164. M - Fenton Panther 5" Ruffled Berry Bowls - Choice A, B, C, D, E and F
165. G - Fenton Spat. Ftd., 8", 8 Ruffle Peacock and Grape Bowl
166. M - Fenton 9", 8 Ruffle, Ftd. Hearts and Trees Master Bowl - Very Scarce
167. Pumpkin M - Fenton 7-1/2", ICS Leaf Chain Bowl
168. P - Dugan 10-1/2", 6 Ruffle Petal and Fan Bowl - Stunning Electric Beauty
169. M - Fenton JIP, Ftd. Horse Medallion Bowl
170. Dark G - Fenton 5-3/4", Ftd., 6 Ruffle Water Lily Sauce - Scarce Color
171. B - Fenton 5-1/2", 6 Ruffle French Knots Hat - Great One
172. Scarce G - Fenton 5-3/4" Blackberry Open Edge Bowl
173. G - Fenton 7-3/4", Tight CRE Vintage (Grape) Bowl - Most Unusual Shape
174. Super M - Fenton Orange Tree Ftd. Spooner - Normal Foot Flaws
175. Scarce A - Fenton Orange Tree Breakfast (Open) Sugar Bowl

- _____ 176. Rare W - Fenton Rose Spray JIP Small Compote
 _____ 177. W - Dugan 7" Grapevine Lattice Low Ruffled Plate - Great Pastel Irid.
 _____ 178. W - Dugan 8-3/4", Low ICS Fanciful Bowl - Scarce Shape
 _____ 179. W - Dugan Constellation Ruffled Compote - Beautiful
 _____ 180. Stunning PO - Dugan 8" Tri-Corner, Ski Star and Compass Bowl - Pumpkin Irid.
 _____ 181. M - Dugan Circle Scroll 5-1/2" Tri-Corner Whimsey From Tumbler
 _____ 182. Scarce PO - Dugan Honeycomb Rosebowl - Better Example
 _____ 183. PO - Westmoreland Hobstar and Fruit 6" Whimsey Card Tray Shape Dish - Very Scarce
 _____ 184. M - Pineapple and Fan Decanter, Stopper and 5 Stemmed Cordials - Rare Set
 _____ 185. M - Millersburg Boutonniere Ruffled Radium Compote
 _____ 186. Dark Cherry Red - Fenton 8", ICS, Collar Base Dragon and Lotus Bowl - Tough to Find
 _____ 187. Red - Fenton 9-1/2" Fine Rib Vase - Always In Demand
 _____ 188. Rare Red - Fenton 5-3/4", 6 Ruffle, Ftd. Panther Bowl
 _____ 189. Red - Fenton 7" Blackberry Spray Hat - 2 Sides Up - Extra Pretty
 _____ 190. Rev. Amberina Opal Tipped - Fenton 2-Row O.E. Basket - 2 Sides Up - Ultra Rare!
 _____ 191. Fantastic Red - Fenton Holly Ruffled Compote
 _____ 192. Awesome P - Imp. Grape 6-1/2" Plate - Radium Multi Electric
 _____ 193. G - Imp. Grape 6-3/8" Plate
 _____ 194. W - U.S. Glass Headdress/Cosmos and Cane 8", 8 Ruffle Bowl - Rare and Lovely
 _____ 195. Great PO - Dugan 9", 10 Ruffle Apple Blossom Twigs Bowl - 1-1/2" of Opal
 _____ 196. Rare Ice B - N Hearts and Flowers Compote - Extra Nice
 _____ 197. Rare Aqua - Fenton 9-3/8", Low 3 in 1 Edge Holly Bowl - Excellent Iridescence
 _____ 198. Dark Ice B - N 9-1/4" Poppy Show Plate - Loaded with Blues and Pinks
 _____ 199. Gorgeous Elec. B - N PCE Grape and Cable Vt. Stippled Bowl - Rib Ext. - WOW!
 _____ 200. Magnificent A - N 9-3/8" Rose Show Plate
 _____ 201. M - Fenton 6-1/2" Peacock Tail Plate - Superb Example
 _____ 202. P - Dugan Question Marks Stemmed Plate - Georgia Peach & Puzzle Ext. - Unbelievable Electric Show Stopper
 _____ 203. AO - N Leaf Bears Rosebowl - Beautifully Iridized
 _____ 204. Fantastic Pastel AO - N Spat. Ftd. Stippled Three Fruits Medallion Bowl
 _____ 205. AO - N 10-1/2" Four Pillars Vases - Butterscotch Overlay - Choice A or B
 _____ 206. A - Fenton 9-3/8" Heart and Vine Plate
 _____ 207. M - Fenton 7-3/4" Horse Medallion Plate - Top Of The Line
 _____ 208. Pastel M - Fenton 9-1/4" Captive Rose Plate - great Iridescence
 _____ 209. W - Fenton Rustic 18-1/2" Giant Funeral Vase - 5" Base - Tough to Find
 _____ 210. Deep B - Fenton 19" Rustic Funeral Vase - 5" Base, 17" Front Height - Hot Item
 _____ 211. Red - Sgnd. Robert Hansen Priscilla Rosebowl - Rare Contemporary Item
 _____ 212. Pastel AO - N Hearts and Flowers Ruffled Compote - Excellent Irid. - Dandy
 _____ 213. Pastel M - N Hearts and Flowers Ruffled Compote
 _____ 214. Lav. - N 9" Stippled Three Fruits Plate - Rib Ext. - Scarce Color
 _____ 215. Aqua - Fenton 6-1/4" Round Grape and Cable Bowl - Radium Delight
 _____ 216. Red - Fenton 5-3/4", JIP 2 Row O.E. Basket
 _____ 217. G - Fenton 9" Ruffled Holly Bowl - Scarce Base Color
 _____ 218. Emerald G - Fenton 7" Round Cherry Circles Bonbon - Fabulous Irid.
 _____ 219. B - Fenton Orange Tree Loving Cup - Chip On Base
 _____ 220. Rich P - 11-3/8", 12 Ruffle Enamel Decorated Brides Bowl
 _____ 221. M - Dugan 8-1/2", Low Ruffled Fanciful Bowl/Plate (?)
 _____ 222. W - Dugan 9-3/8", 10 Ruffle Fanciful Bowl - White At Its Best!
 _____ 223. A - N 8-3/4", 8 Ruffle Grape and Cable Vt. Bowl - Plain Ext. - Electric Irid.
 _____ 224. G - N 8-1/2", 8 Ruffle Strawberry Bowl - Plain Ext. - Emerald Highlights
 _____ 225. Beautiful M - N PCE Strawberry Bowl - BW Ext.
 _____ 226. Pumpkin M - N Stippled Three Fruits, Collar Base, Ruffled Bowl
 _____ 227. P - N PCE Three Fruits Bowl - BW Ext. - Multi Electric
 _____ 228. P - N PCE Three Fruits Bowl - Smooth Ext. - Multi Electric
 _____ 229. Scarce M - N PCE Stippled Three Fruits Bowl - Rib Ext.
 _____ 230. P - N PCE Good Luck Bowl - Rib Ext. - Multi Electric
 _____ 231. P - N PCE Good Luck Bowl - BW Ext. - Multi Electric
 _____ 232. Fantastic M - N PCE, Stippled Good Luck Bowl - Rib Ext.
 _____ 233. B - N Ruffled Good Luck Bowl - Rib Ext. - Electric Iridescence
 _____ 234. Electric B - N PCE Good Luck Bowl - Rib Ext.
 _____ 235. Pastel M - N PCE, Stippled Good Luck Bowl - Rib Ext. - Loaded w/Pastel Irid.
 _____ 236. Great Ice G - N Ruffled Hearts and Flowers Bowl - Rib Ext.
 _____ 237. Outstanding W - N Ruffled Hearts and Flowers Bowl - Rib Ext.
 _____ 238. Gorgeous M - N Ruffled Hearts and Flowers Bowl - Rib Ext.
 _____ 239. Rice Ice B - N Ruffled Hearts and Flowers Bowl - Rib Ext.
 _____ 240. Dark Ice B - N Embroidered Mums Ruffled Bowl - Rib Ext.
 _____ 241. M - N Greek Key 8-3/4" Ruffled Bowl - Rib Ext.
 _____ 242. M - Imp. Lustre Rose Butter Dish w/Lid
 _____ 243. M - N Grape and Cable Tumbler
 _____ 244. M - Fenton Waterlily and Cattails Tumbler
 _____ 245. B - Fenton Fentonia Tumbler - Choice A or B
 _____ 246. P - N Oriental Poppy Tumblers - Choice A or B
 _____ 247. G - N Singing Birds Tumbler - Unusual Alaskan Effect
 _____ 248. M - Dugan Heavy Iris Tumbler - Choice A or B
 _____ 249A. M - Fenton Orange Tree Ftd. Tumbler
 _____ 249. B - Fenton Milady Tumbler
 _____ 250. M - Stork and Rushes Beaded Tumbler
 _____ 251. P - Dugan Maple Leaf Tumbler
 _____ 252. M - Fenton Sailboats Wine Glass
 _____ 253. B - Enameled Cherries Tumblers - 4 x \$



254. M - Stork and Rushes Lattice Tumbler - Choice A or B
255. M - Dugan Lattice and Daisy Tumbler - Nice Radium
256. Lovely M - Imp. 9", Ruffled Pansy Bowl - Loaded With Color
257. P - Imp. 9", Ruffled Pansy Bowl - Radium Highlights
258. Scarce G - Imp. 8-3/4", 8 Ruffle Diamond Lace Bowl - A Tough One To Find
259. M - Imp. 8-1/2" Square Star and File Bowl - Rim Chip
260. A - Mlbg. 9", 3 in 1 Blackberry Wreath Bowl - Super Satin
261. G - Mlbg. 7-3/4", Rd. Flared Grape Wreath Bowl - Eight Point Star Center - Radium
262. A - Mlbg. 5-1/2", Rd. Flared Blackberry Wreath Bowl - Sweet Satin
263. G - Fenton Spat. Ftd., 8 Ruffle 7-1/2" Grape and Cable Bowl
264. G - Fenton Spat. Ftd., 8 Ruffle 8" Stag and Holly Bowl - Scarce Color
265. B - Fenton Spat. Ftd., Round 7" Two Flowers Nut Bowl - Unusual Shape
266. G - Fenton Spat. Ftd., 8-3/4" Grape and Cable Plate - Normal Cleat Nicks
267. Dark M - Fenton 7" ICS, Collar Base Grape and Cable Bowl
268. M - Fenton 7", 6 Ruffle, Collar Base Horse Medallion Bowl - Hot Pattern!
269. M - Fenton 10-1/4", Ftd. Orange Tree Lg. Fruit Bowl - Pattern Inside and Out
270. M - Fenton 10" ICS, Ball Ftd. Chrysanthemum/Windmill Bowl - Loaded With Pinks
271. M - Fenton 9-1/2", Ruffled, Ftd. Butterfly and Berry Master Bowl
272. Vas. - Fenton Persian Medallion Bonbon - 4 Sides Up - Glows Great
273. G - Fenton 7" Vintage (Grape) Bonbon - Card Tray Shape
274. M - Fenton 8-1/2", ICS Orange Tree Bowl - Pattern Inside and Out
275. B - Fenton 6-1/2", 6 Ruffle Stippled Rays Bowl - Scale Band Ext. - Scarce Color
276. Red - Fenton 5-3/4", JIP 2 Row O.E. Basket - Always In Demand
277. Red - Fenton 5-3/4" 2 Sides Up, 2 Row O.E. Basket
278. Aqua - Fenton 5-1/2", 6 Ruffle 2 Row, O.E. Basket - Scarce and Nice
279. Vas. - Fenton 5-3/4", 2 Sides Up, 2 Row O.E. Basket
280. PO - Dugan 8-3/4" Dome Base, Hand Grip Plate
281. PO - Dugan 6-1/2" Flat Four Flowers Plate - Smooth Ext.
282. G - Fenton 8-3/4", 8 Ruffle Holly Bowl
283. Rich M - Fenton 6-1/4", Sq. Holly Hat
284. Rare G - Fenton 9-1/2" Holly Plate
285. Lovely B - Fenton 9-1/2" Holly Plate - Multi Electric
286. Rich M - Fenton 9-1/2" Holly Plate - Another Splendid Example
287. Fantastic M - N 9" Stippled Grape and Cable Vt. Plate - Rib Ext. - Awesome Pinks
288. Rare G - N Ruffled Rose Show Bowl
289. Pastel M - N Flat 9-1/4" Rose Show Plate - Blues and Pinks
290. Scarce M - N Rose Show Ruffled Bowl
291. Pumpkin M - N Stippled Dandelion Mug
292. Electric B - N Peacocks 9" Plate - Rib Ext.
293. A - N 9" Peacocks Plate - Rib Ext. - Way Above Average
294. Rare Pastel M - N 9" Stippled Peacocks Plate - Rib Ext.
295. Beautiful M - N PCE Peacocks Bowl - Rib Ext.
296. Dark P - N PCE Peacocks Bowl - Rib Ext. - Superb Multi Iridescence
297. B - N Ruffled Poppy Show Bowl - RARE, Seldom Offered
298. Celeste B - Fenton Persian Medallion Bonbon - Stretchy Color On This Rarity
299. M - Fenton 9" Flat Concord Plate - Exceptional and Desirable - Tough Find
300. Rare A - Fenton 9-1/4" Flat Vintage Grape Plate - Super Find - Few Known
301. Olive - N 10" Four Pillars Vase
302. W - Dugan 10" Line Lattice Vase - Scarce and Pretty
303. Great M - Fenton 10-3/4" Rustic Vase - CRE Top - 4-3/4" Opening
304. Scarce A - Fenton 10-1/2" Rustic Vase - CRE Top - 4-3/4" Opening
305. P - Imp. 11-1/2" Ripple Vase
306. P - Imp. 17" Morning Glory Funeral Vase - 4-7/8" Base, 7-3/4" Flared Opening
307. M - Imp. 18" Morning Glory Funeral Vase - 4-7/8" Base, 7-1/4" Opening - Radium
308. P - N 13" Mid-Size Thin Rib Vase - 4-3/4" Base, 6" Top - Multi Color Beauty
309. W - N 13" Mid-Size Thin Rib Vase - 4-3/4" Base, 5" Top - Scarce Color
310. Yellow Tinted Base - Imp. 13" Mid-Size Ripple Funeral Vase - 4" Base, 6" Top, Radium Marigold
311. M - Fenton 15" Swung Diamond Point Columns Funeral Vase - CRE Top, 3-3/4" Base, 4-3/4" Top
312. Cobalt B - Fenton 16" Swung Rustic Funeral Vase - CRE 5" Top, 4-1/4" Base
313. G - N 15-1/4" Flute Funeral Vase - 4-1/4" Base, 5" Top - Marigold Highlights
314. Scarce Smoke - Imp. 11-3/4" Freefold Vase
315. M - Imp. 12" Parlor Panels Vase - Really Great Color! - Radium Electric
316. Helios G - Imp. 12-1/2" Swung Parlor Panels Vase
317. M - Imp. 9-3/4" Curled Rib Vase - Unusual 5-1/2" Opening
318. P - N 10" Tree Trunk Vase - Nice Example
319. M - Fenton 11" Plume Panels Vase
320. G - Fenton 12-1/2" Plume Panels Vase - Very Pretty
321. A - Fenton 11" Plume Panels Vase - Scarce Color
322. Dark M - Fenton Fine Rib Footed 5-3/4" Vase - 5-1/4" Ruffled Top
323. M - Dugan/Diamond 7-1/4" Candlestick Vases - Pr.
324. Stretch Ice G - Dugan/Diamond 9-1/2" Candlestick Vases - Pr.
325. M - Dugan/Diamond 9-1/2" Candlestick Vases - Pr.
326. PO - Dugan 7-1/2" Tri-Corner Six Petals Bowl - Loads of Color
327. PO - Dugan 6" Tri-Corner, CRE Bells and Beads Bowl
328. Rich M - Fenton 6" Rd., Flared Little Flowers Bowl
329. A - Fenton 5-1/4" Rd. Little Flowers Berry Bowl
330. Yellow Vas. - Fenton 6-1/2", Deep, Rd., Flared Acorn Bowl - Excellent Marigold Overlay
331. G - Cambridge 6-1/2", ICS Inverted Strawberry Bowl
332. Soft P - Imp. 4-1/2" Rd. Flute Berry Bowl
333. B - Fenton Orange Tree 4-1/2" Rd. Pedestal Sherbet - Smooth Int.
334. B - Fenton 5", Rd. Peacock Tail Berry Bowl

- _____ 335. M - Fenton 5-1/4", Rd. Peacock Tail Berry Bowl
- _____ 336. G - Fenton 5-1/2", 6 Ruffle, Peacock Tail Berry Bowl
- _____ 337. Smoke - Imp. 5-1/2", 6 Ruffle Imp. Grape Bowls, 2 x \$
- _____ 338. Florentine Vas. - Swan Salt
- _____ 339. Pink - Swan Salt
- _____ 340. M - Dugan Diamond and Sunburst Flared Wines - 4 x \$
- _____ 341. P - Dugan Many Fruits Punch Cup
- _____ 342. G - N Stippled Grape and Cable Punch Cup
- _____ 343. A - N Grape and Cable Punch Cup
- _____ 344. M - Fenton Orange Tree Punch Cups - 6 x \$
- _____ 345. M - N 9" Stippled, Ruffled Three Fruits Bowl - Choice Item!
- _____ 346. M - Imp. Flute and Cane 8-1/4" Pitcher
- _____ 346A. M - Dugan 9-1/2" Lined Lattice Vase - Opal Tips
- _____ 347. G - N 8-3/4", 8 Ruffle Three Fruits Bowl - Bw Ext. - Beautiful!
- _____ 348. G - N 9" PCE Rainbow Bowl - BW Ext. - Great, Great Example
- _____ 349. P - N Fine Cut and Roses Rosebowl
- _____ 350. P - N 9", Spat Ftd. Three Fruits Medallion Bowl - Nice Eye Appeal
- _____ 351. A - N 6", Handgrip Grape and Cable Plate
- _____ 352. A - N Ruffled Rainbow Compote - BW Ext.
- _____ 353. G - Fenton 10", 3 in 1 Smooth Rays Bowl
- _____ 354. Moonstone - Westmoreland 9", 6 Ruffle Carolina Dogwood Bowl - White Opal Edging
- _____ 355. Pale M - Dugan 8-1/2", 10 Ruffle Windflower Bowl
- _____ 356. G - Fenton 7-1/2" 2 Sides Up Stippled Rays Bonbon
- _____ 357. M - Imp. Lustre Rose Fernery Bowl
- _____ 358. Pale M - Fenton Holly Ruffled Compote
- _____ 359. M - Dugan 7-1/4", 8 Ruffle Golden Grape Bowl
- _____ 360. M - Dugan Spade Shape Leaf Rays Nappy
- _____ 361. Red - Contemporary Fenton 10" Holly Plate
- _____ 362. Smoke - Contemporary Imp. 8", 3 in 1 Windmill Bowl - IG Mark
- _____ 363. G - Cambridge Inverted Feather Cracker Jar w/Lid - Lid is Okay, Base Is Chipped
- _____ 364. W - N Fine Cut and Roses Ruffled Candy Dish - Normal Feet
- _____ 365. PO - Dugan Pinched Swirl Tri-Corner Rosebowl - Interior Rust Spots
- _____ 366. PO - Dugan 7-1/2", CRE Smooth Rays Bowl/Single Flower Ext.

- _____ 367. G - N 8-3/4" Three Fruits Ruffled Bowl - Smooth Ext.
- _____ 368. M - Imp. Fashion Punch Bowl Base Only
- _____ 369. Florentine Ice G Vas. - Swan Salt
- _____ 370. M - Pressed Tumbler - Flashed
- _____ 371. M - Imp. Lustre Rose Water Pitcher - Cracked
- _____ 372. M - Imp. Lustre Rose Tumblers - 5 x \$
- _____ 373. M - Imp. Lustre Rose Creamers - Choice A or B
- _____ 374. P - N Acorn Burrs Water Pitcher - Base Crack
- _____ 375. W - Contemporary Imp. Lustre Rose Butter Dish, Creamer & Sugar - IG Mark
- _____ 376. Renninger B - N Leaf and Beads Rosebowl - Base Cracked
- _____ 377. Smoke - Contemporary Imp. 474 Mugs - Choice A or B - IG Mark
- _____ 378. Smoke - Contemporary Imp. 474 Water Pitcher & 8 Tumblers - IG Mark
- _____ 379. M - Imp. Grape 9" Deep, Round Bowl
- _____ 380. G - Fenton 7" Ruffled Vintage (Grape) Bowl
- _____ 381. G - Fenton 9-1/4" Ruffled Coin Dot Bowl
- _____ 382. M - Dugan 8-3/4", 10 Ruffle Windflower Bowl - Nice One
- _____ 383. M - Fenton 7", 6 Ruffle, Scalloped Edge Peacock Tail Bowl
- _____ 384. M - Fenton 7-1/2" Ruffled, Smooth Edge Peacock Tail Bowl
- _____ 385. M - Fenton Ruffled Holly Compote

**Approx. 25 Lots To Be Sold
At End Of Auction,
Some Box Lots**

SPECIAL NOTE:

NO SUNDAY CALLS, PLEASE!
Winning Absentee Bidders will be contacted
Monday through Wednesday of the week following
the Auction!

Thank You!

For Free Color Catalogs & Information Write:

Mickey Reichel

516 Third Street, Boonville, MO 65233-1536

or Call: 660-882-5292 days or

660-882-5283 evenings

E-mail: mreichel@undata.com

NEED QUALITY CARNIVAL GLASS & ANTIQUES

*"We don't want all the Business,
Just Yours."*

WE DO AUCTIONS RIGHT!!

2003 CALENDAR

Antique Extravaganza

July 12, 2003

at Boonville, Mo. Auction Gallery

September 13, 2003

CARNIVAL GLASS COLLECTION

at Boonville, Mo. Auction Gallery

October 17-18, 2003

AIR CAPITAL

CARNIVAL GLASS CONVENTION

at Wichita, Kansas

MICKEY REICHEL
ANTIQUE & AUCTION, L.C.
516 THIRD STREET
BOONVILLE, MO 65233-1536

PRESORTED
FIRST CLASS MAIL
US POSTAGE PAID
SEDALIA, MO
PERMIT 217

RETURN SERVICE REQUESTED

FIRST CLASS MAIL
SPECIAL INVITATION TO:



8*64*****MIXED AADC 650

LEE MARKLEY

PO BOX 306

MENTONE, IN 46539-0306

