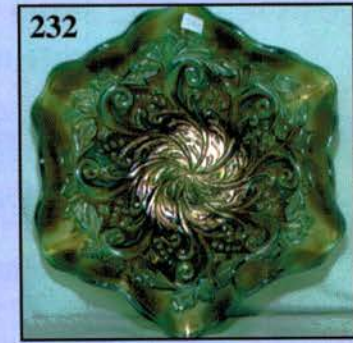
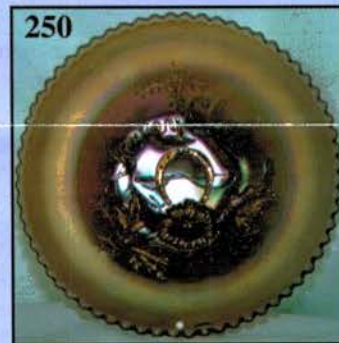
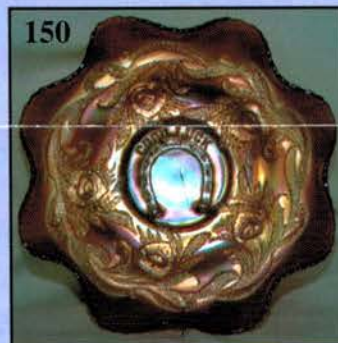
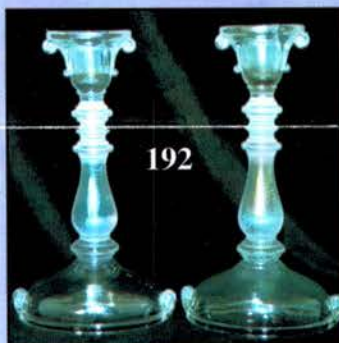
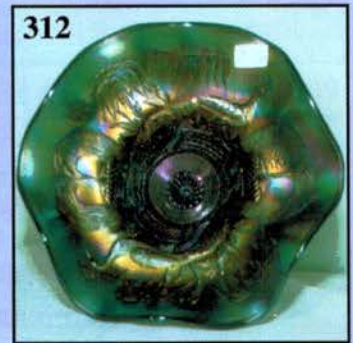
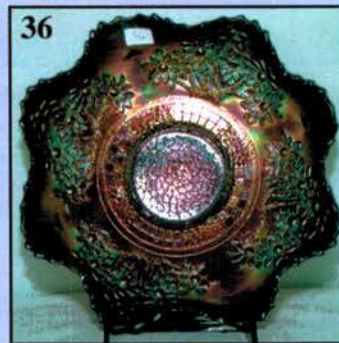
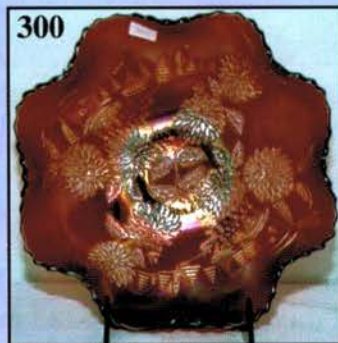
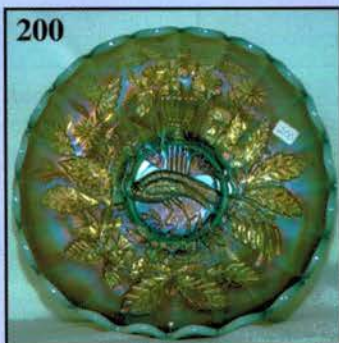


CARNIVAL GLASS AUCTION

Saturday, May 24, 2003 9:00 a.m. C.D.T.
★ Dave and Reva Drabing Collection ★



Held By the Mickey Reichel Antique & Auction L.C.

Office: 660-882-5292 • Home: 660-882-5283

☛ WEB SITE: <http://www.yourauctionpage.com/reichel>

E-mail: mreichel@undata.com

Held Inside the Mickey Reichel Auction Center

1 Mile North of I-70 on Hwy. 5, Exit 101, Boonville, Missouri • 20 Miles West of Columbia, MO on I-70

Preview Friday 12 p.m. - 5 p.m. and 7:30 a.m. - 9:00 a.m. Day of Auction



TERMS: Cash or Good Check, VISA and MasterCard accepted.



3% Clerking Fee on all purchases except for payment of cash or check. Proper I.D. required.

WEB SITE: www.yourauctionpage.com/reichel

ABSENTEE BID POLICY:

WRITE IN BIDS: If you are unable to attend the auction, we will be happy to accept absentee bids which must be received by THURSDAY, MAY 22, 2003. Don't Delay. E-Mail: mreichel@undata.com

FOR AUCTION PRICE RESULTS: Send \$3.00 and Large S.A.S.E. to 516 Third Street, Boonville, MO 65233-1536

PLEASE NOTE: There is a **\$5 handling charge for each successful bid which will be added to the selling price** for all write-in bids. This is in addition to the cost of postage, insurance and packing. Your write-in bid will be entered just as if you are present and bidding. **Successful bidders will be notified in 1 to 3 days by the auctioneer (so be sure to include your phone number).** Direct mail bids to Auctioneer Mickey Reichel, 516 Third Street, Boonville, MO 65233-1536. Terms: Cash or Check accepted with proper I.D. and Social Security Number and References. Announcements made day of the auction supercede all printed material. Not Responsible for Accidents or Sold Items.

No return on any items once they leave the Auction Center (No Exceptions).****

Call for additional information: 660-882-5292 days or 660-882-5283 evenings before 9:00 p.m.

FAX: 660-882-5292 (evening hours start FAX transmission after beep)

MAIL BIDS: Items are bid on in perfect condition with average or above iridescence OR as listed in the brochures. Bids will not be carried out when damage on an item has been found during the auction.

PEOPLE PRESENT AT AUCTION ARE RESPONSIBLE FOR FINDING ANY PINHEADS, WEAR, SPOTTINESS, MANUFACTURER'S DEFECTS OR ANY OTHER MINOR FLAWS, ETC. *****

NOTE: Read each line, as we have accentuated the type of no particular piece, all are special.

Make Reservations EARLY at one of these local motels:

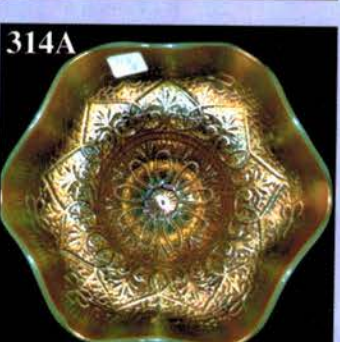
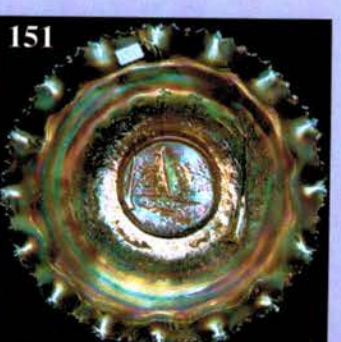
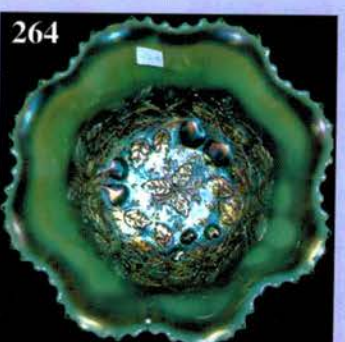
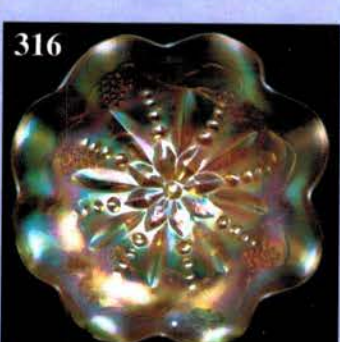
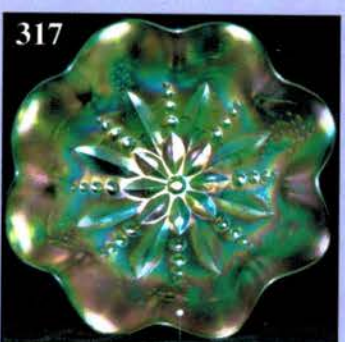
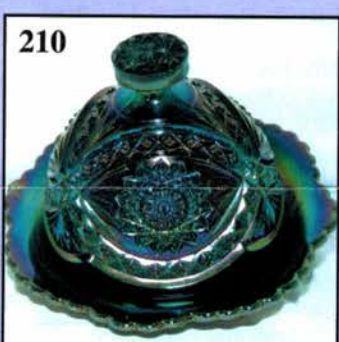
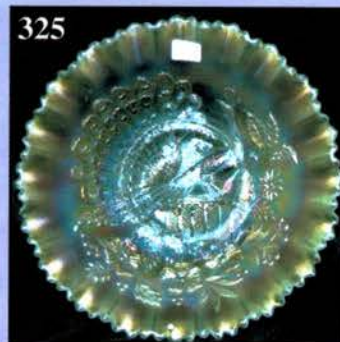
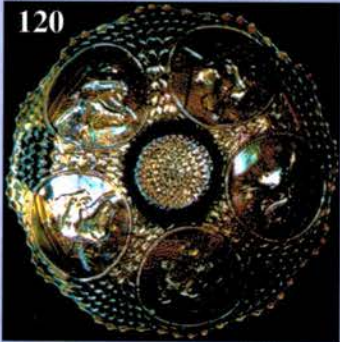
Days Inn: 660-882-8624 • Comfort Inn: 660-882-5317 • Super 8: 660-882-2900 • Holiday Inn: 660-882-6882

Auction Consists of Rarity, Great Irid. and Variety

THANK YOU FOR ATTENDING TODAY

- | | | | |
|-------|--|-------|---|
| _____ | 1. M - Imp. 6-1/2" Ripple Vase - Pink and Blue Irid. | _____ | 11. P - Westmoreland 9-1/2" JIP Corinth Vase |
| _____ | 2. P - Imp. 8" Squatty Ripple Vase, 3-3/8" Base, 5" Opening | _____ | 12. Rare Pumpkin M - Kulor 8" Vase - Loaded with Iridescence |
| _____ | 3. Amber - Imp. 12" Ripple Vase - Scarce and Pretty | _____ | 13. Pearlized - Phoenix Enameled Pine Tree 9" Vase |
| _____ | 4. Dark Aqua - Imp. 11" Swung Ripple Vase - Scarce Beauty | _____ | 14. Topaz Vas. - Australian 8-1/2" Gum Tips Vase - Not Iridized |
| _____ | 5. Smoke - Imp. 6" Morning Glory Mini Vase - 4-1/4" Opening - Electric | _____ | 15. M - Mlbg. (?) 15-3/4" Hobnail Vt. Vase - Lots of Color |
| _____ | 6. Smoke - Imp. 5-1/2" Morning Glory Mini Vase - Sgnd. 1910 | _____ | 16. Rare B - Mlbg. (?) 14-1/2" Hobnail Vt. Vase |
| _____ | 7. Pumpkin M - Imp. 4-3/8" Thin Rib and Drape Vase - Fantastic | _____ | 17. P - Mlbg. (?) 15-3/4" Hobnail Vt. Vase |
| _____ | 8. P - Imp. 10-1/2" Beaded Bullseye Vase - Electric Irid. | _____ | 18. W - Mlbg. (?) 15-3/4" Hobnail Vt. Vase/Rustic Vt.? - Who Cares, It's a Beauty |
| _____ | 9. G - Imp. 12-1/4" Parlor Panels Vase - Seldom Offered and Nice | _____ | 19. G - Mlbg. (?) 16" Hobnail Vt. Vase - Scarce Color |
| _____ | 10. Green Ice - (Blue-Green) - Imp. Stretch Smooth Panels 7-1/2" Mid-Size Squatty Vase - 3-1/2" Base, 6" Opening | _____ | 20. Dark B - Dugan 10" Big Basketweave Vase |
| | | _____ | 21. Electric P - Dugan 10" Big Basketweave Vase - Awesome! |
| | | _____ | 22. Super W - Dugan 10" Lined Lattice Vase |
| | | _____ | 23. Pearl Ruby (Marigold) - Imp. Art Glass 5-3/4" Bulb Vase - Iron Cross Mark |
| | | _____ | 24. Red Amberina - Fenton 9-1/2" Fine Rib Vase - Very Scarce Color |

25. A - Fenton 10-1/4", 6 Ruffle Little Flowers Bowl
26. Deep B - Fenton 9-3/4", 8 Ruffle Little Flowers Bowl
27. G - Fenton 9-3/4", 3 in 1 Little Flowers Bowl - Very Scarce Shape
28. Beautiful M - Fenton 9" ICS Feathered Serpent Bowl - Most Unusual Shape
29. Scarce G - Fenton 9" Deep, Rd., Flared Feathered Serpent Bowl
30. A - Fenton 10", 3 in 1 Feathered Serpent Bowl - Fantastic Example
31. M - Fenton 10-3/4" Ball Ftd. Stag and Holly Bowl - Lots of Color
32. G - Fenton 7-3/4", Spat. Ftd., 8 Ruffle Stag and Holly Bowl - Scarce Color
33. G - Fenton 8-1/4", 3 in 1 Autumn Acorns Bowl - Neat Shape
34. A - Fenton 8", ICS Orange Tree Bowl - Scarce Shape and Color
35. B - Fenton 8-3/4", 8 Ruffle Orange Tree Bowl
36. Cherry Red - Fenton 9", Sq. 8 Ruffle Orange Tree Bowl - Spectacular Example
37. Brick Red - Fenton 7-3/4", 8 Ruffle Grape and Cable Collar Base Bowl
38. Red Amberina - Fenton 6", 6 Ruffle Holly Hat
39. Red Amberina - Fenton 6", JIP, 2 Row O.E. Hat
40. A - Fenton 8-3/4", 8 Ruffle Peacock at Urn Bowl - Beautiful!
41. M - Fenton 8-3/4", 8 Ruffle Peacock at Urn Bowl - Always A Favorite
42. B - Fenton 8-3/4", 8 Ruffle Peacock at Urn Bowl - Multi Electric
43. W - Fenton 8-3/4", 6 Ruffle Peacock at Urn Bowl - Blue Highlights
44. Rich M - Fenton 8-1/2" ICS Peacock at Urn Bowl - Scarce Shape
45. M - Fenton 8-3/4", 3 in 1 Peacock at Urn Bowl - Scarce Shape
46. Magnificent G - Fenton 9", 3 in 1 Dragon and Lotus Bowl
47. M - Fenton 9", 3 in 1 Dragon and Lotus Bowl - Nice Pinks
48. B - Fenton 9", 3 in 1 Dragon and Lotus Bowl - Multi Electric
49. Cobalt B - Fenton 9", 8 Ruffle, Collar Base Dragon and Lotus Bowl - Prime Example
50. Light M - Fenton 9" Captive Rose Plate - Light Radium Irid.
51. Rich M - Fenton 8", 3 in 1 Captive Rose Bowl
52. Lovely G - Fenton 8", 3 in 1 Captive Rose Bowl
53. A - Fenton 8", 3 in 1 Captive Rose Bowl
54. Great B - Fenton 8", 3 in 1 Captive Rose Bowl
55. B - Fenton 8", Tight CRE Captive Rose Bowl
56. A - Fenton 8-1/4", 3 in 1 Heart and Vine Bowl - Scarce Shape and Color
57. B - Fenton 8" Tight CRE Hearts and Vine Bowl
58. Scarce A - Fenton 9", Collar Base, 8 Ruffle Peacock and Grape Bowl
59. B - Fenton 8-3/4", Collar Base, 8 Ruffle Peacock and Grape Bowl - Very Pretty
60. Vas. - Fenton 7-1/2", 8 Ruffle, Collar Base Grape and Cable Bowl
61. M - Fenton 8-1/2", 3 in 1 Coral Bowl - Blemish In Iridescence
62. Powder B - Fenton Goblet Shape Peacock at Urn Compote - Few Known
63. M - Fenton 6", 6 Ruffle Peacock at Urn Compote - Colorful!
64. Lime G Vas. - Fenton 6", 6 Ruffle Peacock at Urn Compote - Soft Marigold Overlay
65. G - Fenton Wreath of Roses Stemmed Bonbon
66. G - Fenton Captive Rose 6-1/4", CRE, Ruffled Compote - Seldom Seen
67. M - N Raspberry 7", 6 Ruffle Compote - BW Ext.
68. Rich M - Fenton 9-1/2", 8 Ruffle Mikado Compote - Superior Irid.
69. M - Fenton 6-1/4", Ruffled, CRE Stream of Hearts Compote - Persian Medallion Ext.
70. M - Fenton 9", 12-Sided Three Fruits Plate - Light Rub on Apple
71. A - Fenton 9", 12-Sided Three Fruits Plate - Light Wear on Fruit
72. G - Cambridge Inverted Feather Cracker Jar - Scarce and Undervalued
73. Amethyst Base, Green Lid (Chipped) - Cambridge Inverted Feather Cracker Jar
74. M - Fenton Thistle Ftd. Banana Bowl - Waterlily & Cattails Ext.
75. M - Dugan 9", Deep, Square Butterfly and Tulip Bowl
76. M - Fenton Apple Tree Water Pitcher
77. Dark M - Fenton Apple Tree Tumbler - Just A Beauty
78. M - Dugan Vineyard Water Pitcher
79. M - Dugan Vineyard Tumbler - Fantastic Example
80. Rich M - Dugan Floral and Grape Water Pitcher - One of the Prettiest
81. M - Dugan Floral and Grape Tumbler
82. M - Fenton Blackberry Block Tankard Water Pitcher
83. Super B M - Fenton Blackberry Block Tumblers - Choice A or B
84. M - Fenton Enameled Magnolia and Drape Int. Water Pitcher
85. Vas. Ice G - Fenton Enameled Crocus 7 pc. Water Set - Fabulous Find
86. M - N Singing Birds Water Pitcher - Outstanding, Colorful Pitcher
- 86A. M - N Singing Birds Tumbler
87. Cobalt B - Enameled Cherries Water Pitcher and 4 Tumblers
88. M - Imp. Crabclaw Tankard Pitcher and Six Tumblers - Extra Nice Set
89. M - Fenton Butterfly and Fern Water Pitcher
90. Superb B - Fenton Butterfly and Fern 7 pc. Water Set - Nice Match
91. Dark M - Imp. Octagon 8" Pitcher w/Six Tumblers
92. P - Imp. Diamond Lace Water Pitcher - Fantastic Electric
- 92A. P - Imp. Diamond Lace Tumbler - Also Beautiful
93. M - Imp. Tiger Lily 7 pc. Water Set - Very Pretty
94. G - Imp. Lustre Rose Water Pitcher - Above Average Example
95. Helios G - Imp. Lustre Rose Tumbler
96. M - Imp. Tiger Lily Water Pitcher - Light Aqua Tint To Base?
97. M - Imp. Tiger Lily Flared Tumbler
98. Great Teal - Imp. Tiger Lily Water Pitcher - Base Glows
99. B - Fenton Squatty 6" April Showers Vase - 4-3/4" Opening - So Neat!
100. Ultra Rare Red - Fenton 11-3/4" April Showers Vase - One of How Many?
101. G - Fenton 10-1/4" Plume Panels Vase - Nice Find
102. Florentine Ice G - Fenton Panels 12-5/8" Vase - Glows - Rare Pastel Multi-Color Irid.
103. M - 9-1/4" Sunflower and Diamond Vase - Attributed to Brockwitz
104. Dark Ice B - N 11-1/4" Thin Rib Vase - Very Hard to Find



105. Ice G - N 8-1/2" Drapery Vase - Wonderful Example
 106. W - N Daisy and Drape Vase - Turned In Top - Frosty
 107. PO - Dugan 6" Pinched Swirl Vase - Top Notch Example
 108. G - N Squatty 5-3/4" Diamond Point Vase - 5-1/2" Top, 3-1/2" Base - Small Base Flake
 109. P - N 9" Diamond Point Vase - Highly Polished Base
 110. Rare B - N 12-3/4" Mid-Size Tree Trunk Vase - Multi Electric
 111. M - N Flute 14-1/4" Mid-Size Funeral Vase
 112. P - N 13-1/2" Thin Rib Mid-Size Funeral Vase - Electric Highlights
 113. M - Bulbous Enameled Chrysanthemum 7-1/4" Tall Halloween Vase - RARE
 114. M - Bulbous Enameled Daisies 7-1/4" Tall Halloween Vase - RARE
 115. M - Fenton 6-1/4" Pine Cone Plate
 116. Scarce A - Dugan 6-1/2" Persian Garden Plate - BW Ext.
 117. B - Fenton 7-3/4" Leaf Chain Plate - Berry and Leaf Circle Ext.
 118. Rare B - Fenton Horse Medallion 7-7/8" Plate - Outstanding Example
 119. Rare Powder B - Fenton Horse Medallion 7-3/4" Plate - Also Outstanding
 120. Radium M - Fenton Horse Medallion 8" Plate - WOW - Looks Like Millersburg
 121. M - Fenton 7-3/4", Ball Ftd., 8 Ruffle Horse Medallion Bowl - Great One!
 122. M - Fenton 7" ICS, Collar Base Horse Medallion Bowl - Pinks and More Pinks
 123. M - Fenton 6-1/4" Lions Rd., Flared Bowl - Neat Shape
 124. Dark B - Fenton 7", 6 Ruffle Lions Bowl - Lots of Blue Irid.
 125. Pumpkin M - Fenton 7", 6 Ruffle Lions Bowl - Fantastic
 126. M - Fenton 9", 6 Ruffle Concord Bowl
 127. M - Fenton 8-1/2" ICS Plaid Bowl - Nice Pink Irid.
 128. Rare M - Fenton Two Flowers Giant Ftd. Rosebowl
 129. Smoke - Imp. Shell 7-1/2", 8 Ruffle Bowl - Extra Nice
 130. P - Imp. Shell and Sand 8", 8 Ruffle Bowl - Hot Item
 131. A - Imp. Scroll Embossed 8", 8 Ruffle Bowl - Plain Ext. - Electric
 132. Radium Electric P - Imp. 9", Ruffled Pansy Bowl - Whew!
 133. Red Amberina - Imp. Chesterfield Stemmed 4" Sherbet
 134. Red - Imp. Lustre Rose 8-3/4" Handled Basket - Broken and Reglued Handle - One of a Kind
 135. P - Imp. 8", 8 Ruffle Windmill Bowl - Screaming Electric
 136. M - Imp. Snow Fancy Creamer and Sugar - Very Scarce Pattern
 137. M - Star and File Decanter - Contemporary
 138. M - Imp. 8-1/2" Tall Flute and Cane Water Pitcher - Tremendous Example
 139. P - Dugan Golden Harvest Decanter - No Stopper
 140. M - Dugan Golden Harvest Decanter w/Stopper
 141. M - Dugan Golden Harvest Wine Glasses - 2 x \$
 142. Rare Smoke - Imp. Grape Decanter w/Stopper
 143. Smoke - Imp. Grape Wine Glasses - Choice A, B, C or D
 144. Helios G - Imp. Grape Decanter w/Stopper
 145. Helios G - Imp. Grape Wine Glasses - Choice A, B, C or D
 146. Rich M - Imp. Grape Carafe or Vase
 147. M - Imp. Diamond and Sunburst Wine Glasses (6) - Well Matched
 148. M - Imp. Octagon Decanter w/Stopper and Six Wines - Fantastic Set
 149. Pumpkin M - Fenton 9-3/4", Ball Ftd., 8 Ruffle Water Lily Bowl

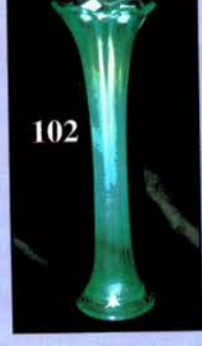
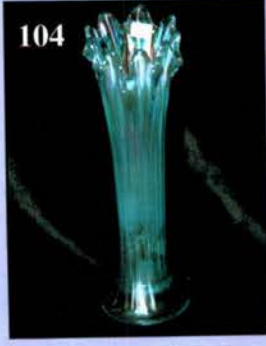
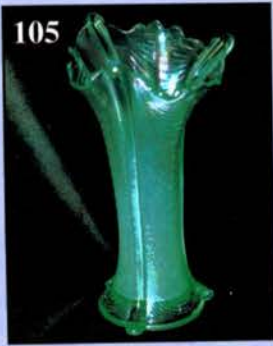
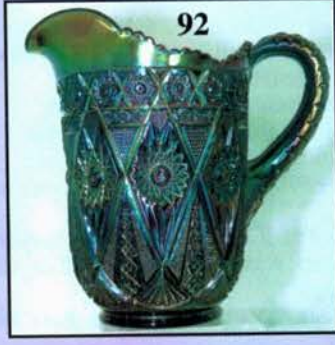
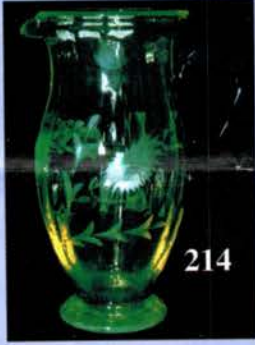
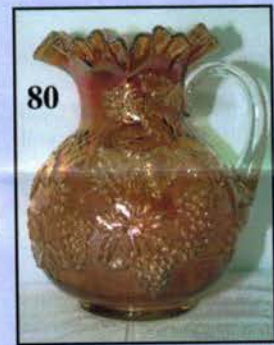
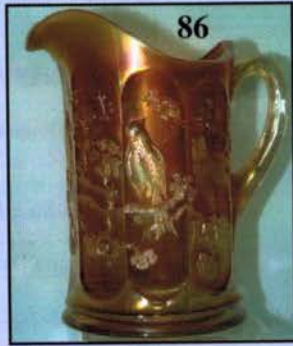
150. Outstanding Rarity! M - Fenton Good Luck 8-3/4", 8 Ruffle Bowl

#151 - #167

AUSTRALIAN CARNIVAL GLASS GROUPING
 ALL OF THESE PIECES ARE TOP OF THE LINE
 EXAMPLES, UNLESS OTHERWISE NOTED

151. Australian M - Kangaroo w/Branch 9-1/2" Bowl - Ruffled
 152. Australian BA - Large Kangaroo 9-1/2" Bowl - Ruffled
 153. Australian M - Shrike 9-1/2" Bowl - Ruffled
 154. Australian BA - Swan 9-1/2" Ruffled Bowl - Worn Irid. On Swan
 155. Australian M - Swan 9-1/4" Bowl - Ruffled
 156. Australian BA - Kingfisher 9-1/2" Ruffled Bowl - Surrounded by Gum Leaves
 157. Australian M - Kingfisher 9-1/2" Ruffled Bowl w/Wattle Blossoms
 158. Australian M - Magpie 9-3/4" Ruffled Bowl
 159. Australian M - Kangaroo w/Branch 5-1/4" Ruffled Bowl
 160. Australian BA - Kangaroo w/Branch 5-1/4" Ruffled Bowl
 161. Australian M - Magpie 5-1/2" Ruffled Bowl
 162. Australian BA - Magpie 5-1/2" Ruffled Bowl
 163. Australian M - Kingfisher w/Gum Leaves 5-1/4" Ruffled Bowl
 164. Australian BA - Shrike 5-1/4" Ruffled Bowl
 165. Australian M - Shrike 5-1/2" Ruffled Bowl
 166. Australian M - Butterfly Bush 7-1/2" Ruffled Compote
 167. Australian M - Butterfly Bower 6-1/2" Dome-Footed Ruffled Bowl
 168. White Stretch - 7-1/2" Tall Oil and Vinegar Cruet w/Floral Etched Cutting - Both Base and Lid Signed Hawkes - Super Rarity!!
 169. Super M - Nola 5-1/2" Tall Perfume w/Stopper - Made by Inwald (Czech)
 170. M - Imp. Optic Flute Stemmed Whimsey Spittoon - Great Item
 171. M Flash - Paneled Cruet w/Clear Stopper
 172. M Flash - Paneled Cruet w/Carnival Stopper
 173. M Flash - Heavy Cut Square Decanter w/Stopper
 174. M - Little Bo Peep Mug
 175. M - Fan and Star Cordial Decanter w/Amber Non-Iridized Stopper
 176. M - Imp. Corn Bottle - Fantastic Example
 177. M - Cambridge Near Cut Cream Pitcher - Mkd: Souvenir Vesta, Minn.
 178. M - Cambridge Near Cut Cream Pitcher - Mkd: Souvenir Big Stone City, S.D.
 179. M - Illinois Daisy Tobacco Jar w/Lid - Neat Piece
 180. M - Liqueur Decanter w/Labels: 1920 Production F & C Uruguay - Talk About Rare
 181. Lime G - Westmoreland Shell and Jewel Creamer and Sugar w/Lids - Well Matched
 182. W - U.S. Glass 8" Deep, Scalloped Cosmos and Cane Master Berry Bowl
 183. M - Bird and Grapes Wall Pocket
 184. Rare Yellow Amber - 8-1/4" Rd. Four Flowers Vt. Master Berry Bowl - Cool Find!
 185. M - Fenton Kittens 4-3/4" Plate - Great Color, Out of Round
 186. M - Fenton Kittens Cup
 187. M - Fenton Kittens 4 Sides Up Bowl - Great Detail and Color

188. M - Fenton Kittens Whimsey Toothpick or Vase
 189. M - Fenton Kittens 6 Ruffle Bowl
 190. M - Fenton Kittens 3-5/8" Round Cereal Bowl - Scarce and Nice!
 191. M - Fenton Kittens 4-1/2", 2 Sides Up Plate
 192. Rare W - Imp. Circle Scroll Candlesticks - Pair
 193. Red Amberina - Imp. Circle Scroll Candlestick - Just One
 194. M - Imp. 6-Sided Candlesticks - Well Matched Pair
 195. Celeste B - Diamond Spindle 8-3/4" Candlesticks - Pr.
 196. Vas. - 8-3/4" Florentine Candlesticks - Pr.
 197. Olive G - N #657, 8-1/2" Candlesticks - Pr.
 198. P - N PCE Strawberry Bowl - BW Ext.
 199. G - N PCE Grape and Cable Bowl - BW Ext.
 200. Exquisite Northwood AO - 9-1/2" Whimsey Peacock at Urn Bowl - Fabulous Irid. on this Rarity - Truly One of a Kind Shape
 201. A - N Star of David and Bows Dome Ftd. Bowl
 202. B - N Grape and Gothic Arches Creamer - Electric Dandy
 203. B - N Grape and Gothic Arches Spooner - Also Beautiful
 204. Pumpkin M - N Grape and Gothic Arches Creamer
 205. Pumpkin M - N Grape and Gothic Arches Butter Dish w/Lid - Loads of Color
 206. Pumpkin M - N Grape and Gothic Arches Sugar Bowl - No Lid
 207. W - N Peach Sugar Bowl w/Lid - Pastel Highlights
 208. W - Dugan Dahlia Cream Pitcher - Red Painted Flowers
 209. W - N Grape Arbor Ruffled Whimsey Hat from Tumbler
 210. Electric P - Imp. Hobstar Butter Dish w/Lid - Imperial At Its Finest
 211. G - Mlbg. Hanging Cherries Creamer
 212. G - Mlbg. Hanging Cherries Sugar Bowl - No Lid
 213. Vas. Topaz - N Concave Diamonds Guest Set or Tumble Up - Complete!
 214. Vas. Topaz - Fenton Floral Cut Ice Tea Pitcher - Cobalt Blue Handle - Not Iridized
 215. Vas. Topaz - Fenton Plain Mug w/Cobalt Blue Handle - Not Iridized
 216. Topaz Vas. Stretch - Master Nut Bowl w/5 Nut Cups
 217. M - Master Nut Bowl, 6 Nut Cups
 218. P - Mlbg. 9-3/4", ICS Hanging Cherries Bowl - Super Pretty
 219. M - Mlbg. 7", ICS Hanging Cherries Bowl - Also Has Great Color
 220. M - Mlbg. 10-1/4", 3 in 1 Hanging Cherries Bowl - Great Look and Size
 221. G - Mlbg. 10", 6 Ruffle Hanging Cherries Bowl - Satin Beauty
 222. G - Mlbg. 7-1/2", 3 in 1 Hanging Cherries Bowl - Scarce Shape and Lovely
 223. A - Mlbg. 9", 6 Ruffle Blackberry Wreath Bowl - Satin
 224. G - Mlbg. 10", 6 Ruffle, Flared Rosalind Bowl - Blues and Pinks!
 225. M - Mlbg. 10-3/8", 3 in 1 Rosalind Bowl - Great Shape and Great Eye Appeal
 226. Radium G - Mlbg. 10", 6 Ruffle, Collar Base Fleur De Lis Bowl - Attractive!
 227. G - Mlbg. 9-3/4", Low, Flared, Scalloped Rays and Ribbons Bowl
 228. G - Mlbg. 10", 3 in 1 Low Ruffled Zig-Zag Bowl - Gilded Edge - Unique!
 229. A - Mlbg. 10", 6 Ruffle Zig-Zag Bowl - Multi Color Satin
 230. Radium A - Mlbg. 8-1/4", 3 in 1 Grape Wreath Bowl - Multi Star Center
 231. G - Mlbg. 7-1/2", 6 Ruffle Little Stars Bowl
 232. G - Mlbg. 10-1/2", 6 Ruffle Seaweed Bowl
 233. A - Mlbg. 6-1/8", 6 Ruffle Peacock Small Mold Bowl - Scarce & Radium
 234. A - Mlbg. 5" Rd. Peacock Proof Bowl - Great Detail
 235. M - Mlbg. 10", 6 Ruffle Peacock at Urn Bowl
 236. A - Mlbg. 10-1/4", 6 Ruffle Peacock at Urn Bowl
 237. A - Mlbg. 8-3/4", 6 Ruffle Peacock at Urn Mystery Bowl
 238. M - Mlbg. 8-3/4", 3 in 1 Peacock at Urn Mystery Bowl - Scarce Color
 239. G - Mlbg. 6 Ruffle Trout and Fly Bowl
 240. Pastel Ice B Tint - N 5" Rd. Peacock at Fountain Berry Bowl
 241. M - N 5-3/4" Rd. Peacock at Urn Bowl - Hot Pinks and Blues
 242. B - N 5-3/4" Rd. Peacock at Urn Bowls - Choice A or B - Great Irid.
 243. A - N 5-3/4" Rd. Peacock at Urn Bowl - Very Pretty
 244. W - N 5-1/2" Peacock at Urn Bowl - Frosty
 245. M - Imp. Broken Arches Round Punch Bowl, Base and Four Cups
 246. M - Imp. Waffle Block Punch Bowl, Base, Six Cups - Great Set
 247. M - N Acorn Burrs Punch Bowl (Has Polished Flanges) and Base
 248. M - Fenton Vintage (Grape) Int. Punch Bowl, Base, 6 Cups - Wreath of Roses Ext.
 249. A - 8-1/4" Ruffled Diving Dolphins Ftd. Bowl - Scroll Embossed Interior
 250. Lav. - N 5-7/8" Slightly Flared Jockey Club Advertising Plate
 251. A - 6", 6 Ruffle Isaac Benesch Advertising Bowl - Extra Nice Irid.
 252. Radium A - Mlbg. 6 Ruffle Courthouse Bowl - Superb Iridescence
 253. M - N Round Bushel Basket - Well Above Average
 254. B - N Round Bushel Basket
 255. M - N Stippled Rays Dome Base Bowl - Greek Key and Scales Ext.
 256. G - N 8-3/4" Ruffled Strawberry Bowl - BW Ext. - Classy Look & Color
 257. M - N 8-3/4" Ruffled Strawberry Bowl - BW Ext. - Pinks, Yellows, Blues
 258. P - N PCE Three Fruits Bowl - BW Ext.
 259. Pumpkin M - N PCE Three Fruits Bowl - BW Ext.
 260. G - N 8-3/4", 8 Ruffle Three Fruits Bowl - Smooth Ext. - Emerald Highlights
 261. G - N 8-3/4", 8 Ruffle Three Fruits Bowl - BW Ext.
 262. M - N Collar Base, 8-1/2", Ruffled Stippled Three Fruits Bowl - Rib Ext. - Lush Pinks
 263. Pastel M - N Collar Base, 8-1/2", Ruffled Stippled Three Fruits Bowl - Rib Ext.
 264. AO - N Spat. Ftd., Ruffled Stippled Three Fruits Medallion Bowl
 265. Clear Crystal - N 8-3/4", Collar Base, Ruffled Stippled Three Fruit Bowl - Silver Satin Irid. - Very Unusual
 266. P - N Fruits and Flowers Stemmed Bonbon - Electric Blue Irid.
 267. Scarce A - Fenton 9", 6 Ruffle Persian Medallion Bowl
 268. G - Fenton 9-3/4", 3 in 1 Persian Medallion Bowl - Nice Size, Shape, Color
 269. Vas. - Fenton Persian Medallion Bonbon - 4 Sides Up
 270. G - Fenton 9-1/4", 3 in 1 Holly Bowl - Emerald Highlights - Scarce Shape
 271. Pumpkin M - Fenton 9", 3 in 1 Holly Bowl



272. A - Fenton 9-1/2", 3 in 1 Holly Bowl - Loaded with Blues and Pinks
 273. Cobalt B - Fenton 8-3/4", 3 in 1 Holly Bowl - Enchanting Color
 274. Rare Moonstone - Fenton 6-1/4", 6 Ruffle Holly Hat - Pretty Example
 275. B - Fenton 6", JIP Holly Hat - Super Nice
 276. Scarce A - Fenton 8-1/2", 3 in 1 Wild Blackberry Bowl
 277. M - Fenton 9", 6 Ruffle Wild Blackberry Bowl
 278. G - Fenton 9", 6 Ruffle Wild Blackberry Bowl
 279. Beautiful G - Fenton 9", 8 Ruffle Lotus and Grape Bowl
 280. G - Fenton 10", 3 in 1 Ten Mums Bowl - Very Close To Emerald Green
 281. Amber - Fenton 6-1/2", 6 Ruffle Blackberry Spray Hat
 282. Rare M - Fenton 9-1/2", Ftd., 8 Ruffle Hearts and Trees Bowl - Butterfly and Berry Ext. - A Beauty
 283. Amberina - Fenton 6", ICS Stippled Rays Bowl - Top Notch
 284. M - Fenton 9", Rd., Flared, Scalloped Dragon and Strawberry Bowl - Collar Base
 285. M - N Singing Birds Mug - Extra Pretty
 286. Scarce B - N Singing Birds Mug
 287. P - N Singing Birds Mug - Multi-Electric
 288. P - N Stippled Dandelion Mug
 289. Scarce B - Dugan Beaded Shell Mug
 290. Rare W - Dugan Beaded Shell Mug
 291. Dandy Vas. - Fenton Orange Tree Mug - 2-1/2" Base, Flared Opening
 292. Beautiful Amber - Fenton Orange Tree Mug - 2-1/2" Base, Flared Opening
 293. Rare G - Fenton Orange Tree Mug - 2-1/2" Base, Flared Opening
 294. Red Amberina - Fenton Orange Tree Mug - 2-1/2" Base, Flared Opening - Fantastic
 295. Cherry Red - Fenton Orange Tree Shaving Mug - 3" Base - Not Iridized
 296. Cherry Red - Fenton 6" Ruffled Holly Hat
 297. Red - Fenton 5-1/4" Ruffled Holly Hat
 298. Amber Base - Fenton 6-1/4", 6 Ruffle Sailboats Bowl - Unusual Red Edge!
 299. Rev. Red Amberina - Fenton 5-3/4", 2 Row O.E. Basket - Two Sides Up
 300. Rare, Rare Red - Fenton 9", 8 Ruffle Collar Base Chrysanthemum Windmill Bowl - A Real Show Stopper and A Crowning Jewel to Any Collection!
 301. Dark M - N Leaf Beads Rosebowl - Plain Int.
 302. BA - N Leaf Beads Rosebowl - Sunflower Int. - Sides and Base Look Red in Bright Light - Oxblood?
 303. M - N Wishbone Ftd., Ruffled 8" Bowl - Amber Looking Irid.
 304. P - N Wishbone Ftd. Ruffled 8-1/2" Bowl - Very Nice
 305. M - N Wishbone 9-3/4", PCE, Collar Base Bowl - Beautiful Example
 306. G - N Wishbone 9-3/4", PCE, Collar Base Bowl - Radium Dandy
 307. Ice B - N PCE Nippon Bowl - Rib Ext. - Very Pretty Bowl
 308. P - N PCE 9-3/4" Stippled Rays Bowl - Smooth Ext. - Highly Unusual and Electric
 309. M - N Banded Grape Cologne Bottle w/Grape and Cable Stopper
 310. M - N Grape and Cable Banana Bowl
 311. Dark M - N Peacock at Fountain, 7 pc, Berry Set
 312. B - N Peacock at Fountain Compote - Beautiful Piece
 313. Pastel M - N Hears and Flowers Compote
 314A. AO - N Hearts and Flowers - Exc. Butterscotch Overlay
 314. M - N 10-1/2", 8 Ruffle Peacock At Urn Bowl - Seldom Seen Shape and So Nice!
 315. Rare P - N Octet Dome Base, 8 Ruffle Bowl - Superior Color
 316. Rare M - N Octet Dome Base, 8 Ruffle Bowl - Superior Color
 317. Rare G - N Octet Dome Base, 8 Ruffle Bowl - Superior Color
 318. Stunning Electric B - N Good Luck Ruffled Bowl - Rib Ext.
 319. B - N Ruffled Good Luck Bowl - Rib Ext.
 320. Pumpkin M - N PCE Good Luck Bowl - Rib Ext.
 321. P - N Good Luck Vt. Ruffled Bowl - BW Ext.
 322. G - N Good Luck 9-1/4" Plate - BW Ext. - Cleat Nicks
 323. M - N Peacocks Ruffled Bowl - Rib Ext. - Loaded with Color, Birds and All
 324. M - N Peacocks PCE, Stippled Bowl - Scarce with Stippling
 325. W - N Peacocks PCE Bowl - Smooth Ext. - Blues and Pinks
 326. W - Dugan Dome Base, 9", 10 Ruffle Double Stem Rose Bowl
 327. PO - Dugan Dome Base, 9", 3 in 1 Crimp Double Stem Rose Bowl - First Rate
 328. P - Dugan 8-3/4", 10 Ruffle Apple Blossom Twigs Bowl
 329. PO - Dugan 8-3/4", 10 Ruffle Apple Blossom Twigs Bowl
 330. PO - Dugan 8-3/4", 10 Ruffle Crimped Edge Raindrops Bowl
 331. PO - Dugan 10-3/4", 6 Ruffle Ski Star and Compass Bowl
 332. PO - Dugan 8-3/4", Dome Base, 3 in 1 Crimp Border Plants Bowl - Very Scarce
 333. PO - Dugan Border Plants 7" Nut Bowl - 1-1/2" of Opal
 334. P - Dugan 8-3/4", Dome Base, 10 Ruffle Flowers and Frames Bowl - Multi Elec.
 335. PO - Dugan 8", Tri-Corner, CRE Flowers and Frames Bowl - Hard to Find Shape
 336. PO - Dugan 10-3/4", 6 Ruffle Smooth Ray Int. Bowl - Jeweled Heart Ext. - Gorgeous Item
 337. PO - Dugan 9", Collar Base, ICS Wishbone and Spades Bowl
 338. PO - Dugan Tri-Corner Pinched Swirl Squatty Vase - 4" Tall
 339. Pumpkin M - Dugan 8-1/2", 6 Ruffle Pony Bowl
 340. Rare! M - Dugan Five Hearts Dome Base, 10 Ruffle Bowl
 341. M - Dugan 8-1/2", 10 Ruffle Brooklyn Bridge Bowl - Better Example
 342. Rare! M - Dugan 8-1/4", Dome Base, 10 Ruffle Weeping Cherries Bowl
 343. M - Dugan 8-3/4", Rd., Flared Four Flowers Bowl - Soda Gold Ext.
 344. P - Dugan 9-1/2", 10 Ruffle Cosmos Vt. Bowl - Outstanding Find
 345. Dugan Blue - Windflower 8-3/4", 10 Ruffle Bowl
 346. P - Dugan Victorian 11", 6 Ruffle Bowl - Always In Demand
 347. PO - Westmoreland 8-1/4", ICS Scales Bowl - Extra Nice
 348. W - N Grape Arbor Tumbler - Frosty
 349. W - N Oriental Poppy Tumbler
 350. W - N Dandelion Tumbler
 351. W - N Peach Tumbler
 352. B - N Peach Tumbler - Electric Highlights
 353. P - N Raspberry Tumblers - Choice A, B, C or D
 354. Rare Teal - Imp. 474 Tumbler
 355. Odd Green - Imp. Windmill Tumbler - Base Glows
 356. Scarce Smoke - Imp. Fashion Tumbler

- _____ 357. P - Imp. Lustre Rose Tumbler - Electric Irid.
 _____ 358. Honey Amber - U.S. Glass Cosmos and Cane Tumbler - J.R. Miller Advertising
 _____ 359. Vas. Topaz - N Concave Diamond Flared Top Tumbler
 _____ 360. M - Dugan Harvest Flower Tumbler
 _____ 361. B - Enameled Spring Festival Tumbler - Rarely Seen
 _____ 362. M - N Enameled Pretty Panels Tumbler - Superb Piece
 _____ 363. Aqua - Mlbg. Diamonds Tumbler
 _____ 364. A - Mlbg. Diamonds Tumbler
 _____ 365. M - Mlbg. Feather and Heart Tumbler - Good Rich Satin Color
 _____ 366. B - Enameled Ground Cherries Tumblers - Choice A or B
 _____ 367. Contemporary - Red - HOACGA Good Luck 1974, 7 pc., Water Set
 _____ 368. Contemporary - Red - HOACGA Whiskey Decanter and Six Shot Glasses - 1976
 _____ 369. Contemporary - Red - HOACGA Grape and Cable Candlelamps - 1981 - No Metal Inserts, Choice A or B
 _____ 370. Contemporary - Ice B - HOACGA 1982 Corn Vase - Gold Trim
 _____ 371. Contemporary - Lav. - HOACGA 1982 Corn Vase - Gold Trim
 _____ 372. Contemporary - M - ACGA 1986 Miniature Morning Glory Pitcher
 _____ 373. Contemporary - G - ACGA 1987 Miniature Morning Glory Pitcher
 _____ 374. Contemporary - P - ACGA 1988 Miniature Morning Glory Pitcher
 _____ 375. Contemporary - Red - ACGA 1989 Miniature Morning Glory Pitcher
 _____ 376. Contemporary - Red - Fenton JIP Lg. Poppy Show Vase - Limited Production
 _____ 377. Contemporary - Spruce Green - Fenton Ruffled Lg. Poppy Show Vase - Limited Production
 _____ 378. Contemporary - Topaz Opal - Fenton Ruffled Lg. Poppy Show Vase - Limited Production
 _____ 379. Contemporary - Topaz Opal - Fenton Christmas Compote - Fantastic
 _____ 380. Contemporary - Red - Fenton Christmas Compote - Fantastic
 _____ 381. Contemporary - B - Robins Water Pitcher - Mkd. IG
 _____ 382. Contemporary - Red - Robins Water Pitcher - Mkd. IG
 _____ 383. Contemporary - Red - Robins Tumblers - Mkd. IG - Choice A or B
 _____ 384. Contemporary - W - Robins 7 pc. Water Set - Mkd. IG
 _____ 385. Contemporary - Red - Fenton Hobnail Lg. Decanter and Six Goblets
 _____ 386. Contemporary - Vas. Opal - Fenton Hobnail 7 pc. Juice Set
 _____ 387. Contemporary - AO - ICGA 1981 Frolicking Bears Cuspidor
 _____ 388. Contemporary - Red - ICGA 1982 Frolicking Bears Cuspidor
 _____ 389. Contemporary - Vas. Opal - ICGA 1983 Frolicking Bears Cuspidor
 _____ 390. Contemporary - PO - ACGA 1982 Seacoast Cuspidor
 _____ 391. Contemporary - G - ACGA 1983 Seacoast Cuspidor
 _____ 392. Contemporary - Red - Singleton Bailey 1990 Farmyard Cuspidor - Less Than 100 Made
 _____ 393. Carnival Beaded Purse - Made In Belgium
 _____ 394. Carnival Beaded Handbag
 _____ 395. Carnival Beaded 20 Strand Necklace - 20"
 _____ 396. Beaded Multi-strand Necklace - 18"
 _____ 397. Carnival Beaded 36" Single Strand Necklace - Red Beads
 _____ 398. Carnival Beaded 13" Double Strand Necklace - Aqua
 _____ 399. Carnival Beaded 14" Triple Strand Necklace - BA
 _____ 400. Carnival Beaded 28" Single Strand Necklace - BA
 _____ 401. BA - Carnival Glass Clip-On Earrings
 _____ 402. BA - Carnival Glass Clip-On Earrings
 _____ 403. P - Carnival Glass Floral Hair Clip
 _____ 404. Carnival 2-3/4" Hair Combs - Pr.
 _____ 405. BA - 7-1/2" Carnival Bracelet - Choice of Four
 _____ 406. BA - 15-1/2" Single Strand Necklaces - Choice of Four

SPECIAL NOTE:

NO SUNDAY CALLS, PLEASE!
 Winning Absentee Bidders will be contacted Monday through Wednesday of the week following the Auction!

Thank You!

For Free Color Catalogs & Information Write:

Mickey Reichel

516 Third Street, Boonville, MO 65233-1536

or Call: 660-882-5292 days or

660-882-5283 evenings

 E-mail: mreichel@undata.com

NEED QUALITY CARNIVAL GLASS & ANTIQUES

*"We don't want all the Business,
 Just Yours."*

WE DO AUCTIONS RIGHT!!

2003 CALENDAR

June 21, 2003

CARNIVAL GLASS COLLECTION
 at Boonville, Mo. Auction Gallery

September 13, 2003

CARNIVAL GLASS COLLECTION
 at Boonville, Mo. Auction Gallery

October 17-18, 2003

AIR CAPITAL
 CARNIVAL GLASS CONVENTION
 at Wichita, Kansas

MICKEY REICHEL
ANTIQUE & AUCTION, L.C.
516 THIRD STREET
BOONVILLE, MO 65233-1536

PRESORTED
FIRST CLASS MAIL
US POSTAGE PAID
SEDALIA, MO
PERMIT 217

RETURN SERVICE REQUESTED

FIRST CLASS MAIL
SPECIAL INVITATION TO:

200



8*20*****MIXED AADC 650

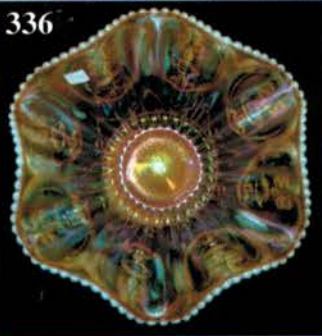
LEE MARKLEY

PO BOX 306

MENTONE, IN 46539-0306



336



332



329



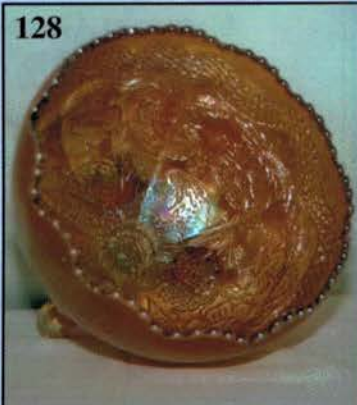
335



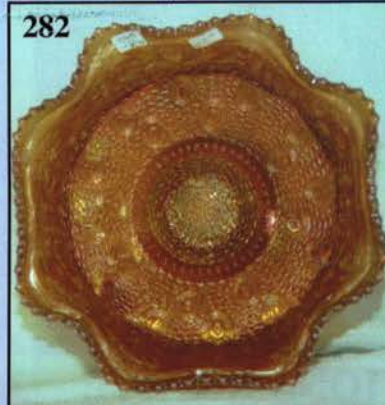
113



128



282



114

