



BURNS

AUCTION SERVICE

2003 Keystone Convention Auction

Friday, May 9, 2003

Preview: 11 am; Auction 1 pm (Lots 1 - 125)

Saturday, May 10, 2003

Preview: 8 am; Auction 9 am (Lots 126 - end)

at the

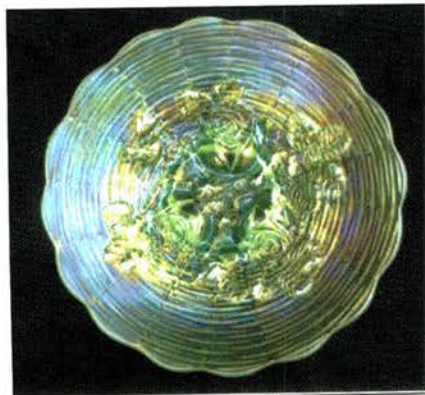
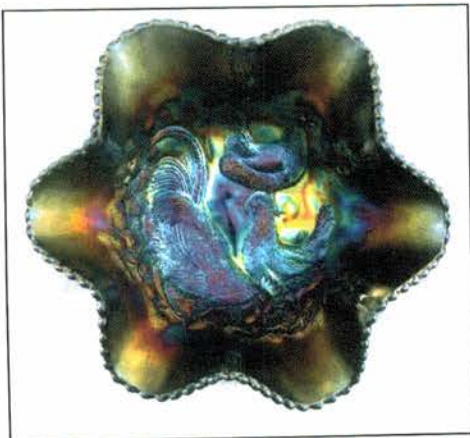
Holiday Inn - Morgantown

6170 Morgantown Rd., Morgantown, PA 19543

(Rt. 10 off PA Turnpike Exit 22)

(610) 286-3000 or 1-800-339-0264

William Richards, Auctioneer • PA License #AU002580L



It's that time of year again - only sooner! At this time we will present a selection of quality Carnival Glass as part of the 2003 Keystone Carnival Glass Club's Convention. This Convention is a bit earlier than in the past because of a schedule conflict. However, we're at the same Holiday Inn located in Morgantown, PA and will include glass from Florida and Alabama, plus other consignments - making for a nice get-together with an enjoyable auction.

The auction will run Friday early afternoon and finish up on Saturday morning / early afternoon. The Holiday Inn of Morgantown will host the event. It's located just off Exit 22 of the Turnpike, on Rt. 10. For further info call the motel direct at (610) 286-3000 or 1-800-339-0264. For further info on the Convention contact Dave Sharp at (717) 626-8231. Hope to see y'all there!

Mail Bids due by Tuesday, May 6, 2003.

Burns Auction Service

Tom Burns
P.O. Box 608
Bath, New York 14810
(607) 776-7942 Cell: 731-9302

Bill Richards
44 Water Street, Poland OH 44514
(330) 757-2001
FAX (330) 757-4917

Bill Richards III
2253 Country Lane
Poland, OH 44514
(330) 755-2620

Mail Bids honored under the following conditions:

1. No deposit required. Bidders will take full responsibility to honor any and all bids we execute for them. Payment in full plus postage and handling required after notification and before we ship any item to them.
2. Items are bid on in perfect condition with average or above average iridescence OR as listed in the brochures. Bids will not be carried out when damage on an item has been found during the auction. **PEOPLE PRESENT AT THE AUCTION ARE RESPONSIBLE FOR FINDING ANY PINHEADS, WEAR, SPOTTINESS, MANUFACTURER'S DEFECTS OR ANY OTHER MINOR FLAWS, ETC.**
3. Successful bidders will be notified by collect call from the auctioneer **SO BE SURE TO INCLUDE PHONE NUMBER.**
4. Phone inquiries about the glass or any other questions are welcome.
5. If you have some other person at the auction bidding for you, they must pay for the item before taking it.
6. Any terms or conditions given the day of the auction will supersede any previously published information.
7. Mail, e-mail, fax and phone bids are due by Tuesday, May 6, 2003

Visit our website at: <http://www.woodsland.com/burnsauction/>

- | | |
|---|---|
| <p>_____ 1. N Cherry and Cable Handled Creamer - Mari. (cracked)</p> <p>_____ 2. Pr. Czech Melon Rib Salt and Pepper Shakers - Mari. (original tops, scarce)</p> <p>_____ 3. 6" Tall European Hand Vase - Cranb. Flash/ Clear (scarce with nice color)</p> <p>_____ 4. 2 1/8" Tall (Maker ?) Toby Jug Handled Toothpick Holder - Cranb. Flash / Clear (unusual small item; looks like a tiny Toby jug)</p> <p>_____ 5. 4" TALL UNUSUAL SHAPED WESTMORELAND WILD ROSE SQUATTY SYRUP JUG - CLEAR (A RARE SQUATTY VARIATION; HAVEN'T SEEN ANY BEFORE)</p> <p>_____ 6. N Peach Handled Water Pitcher - Crystal Green/ Gold (scarce; perfect with really nice gold decor.)</p> <p>_____ 7. N Memphis Covered Butter Dish - Crystal Green/ Gold (scarce item with nice decor.; may have small chip on base point)</p> <p>_____ 8. 11 1/2" Tall N Thin Rib Standard Swung Vase - Crystal Green (scarce; nice)</p> <p>_____ 9. 11" Tall N Thin Rib Standard Swung Vase - Green (nice; scarce)</p> <p>_____ 10. 10 1/2" TALL N THIN RIB STANDARD SWUNG VASE - BLUE OPAL. (NOT CARNIVAL; ACTUALLY QUITE A RARE ITEM; HAVEN'T SEEN ANOTHER)</p> <p>_____ 11. 10 1/4" Tall N Tree Trunk Standard Swung Vase - Green (really nice example with nice color and irid.)</p> <p>_____ 12. 13" TALL FENTON FINE RIB MID-SIZED SWUNG VASE - POWDER BLUE/ MARI. (SCARCE COLOR IN A SCARCE SIZE)</p> <p>_____ 13. 10 1/4" Tall Jenkins Cut Flowers Lg. Cylinder Vase - Mari. (scarce; a pretty nice example)</p> <p>_____ 14. 8 5/8" TALL IMPERIAL RIPPLE SMALL TALL SWUNG VASE - SMOKE (SCARCE SMALL SIZE WITH EXCELLENT IRID.)</p> | <p>_____ 15. 6 3/4" TALL x 6" DIAM. IMPERIAL RIPPLE MID-SIZE SQUATTY SWUNG VASE - CRYSTAL GREEN (HAVEN'T SEEN ONE OF THESE BEFORE; UNUSUAL)</p> <p>_____ 16. 3 pc. M'burg Ohio Star - Sugar base, Creamer, and damaged Spooner - Crystal (selling as a set)</p> <p>_____ 17. 6 3/8" x 6 3/8" M'burg Ohio Star 4 sided Square Tray - Crystal (scarce; has a chip on a corner)</p> <p>_____ 18. M'burg Palm Wreath Oval Spooner - Crystal (scarce)</p> <p>_____ 19. Imperial Zippered Heart 4 sided Square Spooner - Crystal (scarce shape)</p> <p>_____ 20. 3 1/8" N Wide Panel ftd. ind. Salt Dip - Crystal Vaseline (scarce item; very attractive)</p> <p>_____ 21. 8 7/8" Imperial Open Rose 3 ftd. Flat Plate - Amberina (very scarce item; not iridized; really nice)</p> <p>_____ 22. 8 3/4" Fenton Vintage Grape 8 Ruffled Bowl - Blue Opal. (not carnival; super opal.; nice)</p> <p>_____ 23. 8 3/4 - 9" Fenton Vintage Grape Bowl with 3 in 1 Edge - Milk Glass (not carnival; unusual with nice color)</p> <p>_____ 24. 8 1/4" Fenton Double Dolphin ftd. Flat Plate with Diamond Quilt Int. - Crystal Pink (not carnival; scarce shape and color)</p> <p>_____ 25. N THREE FRUITS STIPPLED 8 RUFFLED BOWL WITH RIBBED EXT. (BLUE OPAL. (NOT CARNIVAL; VERY SCARCE WITH GREAT OPAL.))</p> <p>_____ 26. N Poinsettia and Lattice ftd. 8 Ruffled Bowl with Ribbed Ext. - Clear Opal. (not carnival; scarce with opal. on the edge)</p> <p>_____ 27. N Round Handled Bushel Basket - Ebony (not carnival; scarce)</p> <p>_____ 28. N Round Handled Bushel Basket - Blue (satiny irid.)</p> <p>_____ 29. N Leaf and Beads ftd. Tri-Cornered Candy Dish - Pastel Mari. (scarce shape and a beautiful example)</p> <p>_____ 30. N PEACOCK AT THE URN LG. ICE CREAM BOWL - ICE GREEN (RARE ITEM; HAS GOLD/ SILVERY IRID.; SORTA NICE)</p> <p>_____ 31. N Singing Bird Handled Mug - Elec. Purp. (dark color with really attractive irid.)</p> |
|---|---|

- _____ 32. N Singing Bird Handled Mug - Blue (scarce; average irid.)
- _____ 33. N Singing Bird Handled Mug - Dk. Mari. (nice dark color and irid.)
- _____ 34. **N DANDELION / KNIGHTS TEMPLAR HANDLED MUG - DK. MARI. (A VERY NICE EXAMPLE OF THIS VERY SCARCE ITEM)**
- _____ 35. **N G & C 2 PC. CANDLE LAMP - MARI. (RARE AND VERY DESIRABLE; DARK WITH SATINY IRID.)**
- _____ 36. N Leaf and Beads ftd. Rose Bowl - Blue/ Elec. Blue (nice color with blue highlights)
- _____ 37. N Leaf and Beads ftd. Rose Bowl - Dk. Mari. (very nice example)
- _____ 38. (Maker ?) Ribbed 3 pc. Table Set (Creamer, Covered Sugar, Spooner) - Odd Dk. Mari. (could be Imperial; an odd set I haven't seen)
- _____ 39. U.S. Glass (?) Patterned (Spoke Pattern) Wine Decanter with Stopper - Odd Dk. Mari. (I've seen tumblers and juice glasses but not a decanter)
- _____ 40. **FENTON KITTENS 4 SIDED BOWL - BLUE (RARE AND DESIRABLE; REALLY NICE SATINY IRID. AND DETAIL)**
- _____ 41. Fenton Orange Tree Standard Flared Handled Mug - Blue/ Elec. Blue (nice irid. with great irid.; a beaut!)
- _____ 41A. Fenton Orange Tree Standard Flared Handled Mug - Dk. Mari.
- _____ 42. 8 1/2" Fenton Leaf Chain 6 Ruffled Bowl - Elec. Blue (super irid. for this item; may have pinhead)
- _____ 43. 10" Fenton Cherry Chain Lg. 8 Ruffled Bowl with Orange Tree Ext. - Blue (satiny example; a nice size)
- _____ 44. Fenton Flowers ftd. Rose Bowl - White (rare and desirable; frosty and nice)
- _____ 45. 6 1/2" Tall x 6" Diam. Fenton Stretch Plain Flower Pot Shaped Vase - Tangerine (rare and very desirable item; quite attractive)
- _____ 46. 11" Tall Fenton Stretch Swung Bud Vase - Celeste Blue (nice; attractive)
- _____ 47. 7 1/2" Diam. N'wood Stretch ftd. Turned in Bowl - Opaque Blue (nice color)
- _____ 48. 6 3/8" Tall x 6 1/4" Diam. Czech Ribbed Flower Pot Vase with Deco Black Trim - Clear Irid. (odd item; bright irid.)
- _____ 49. 8 3/4" Dugan Fanciful low Ruffled Bowl/ Plate - Mari. (nice color with a radium type irid.)
- _____ 50. **DUGAN QUILL HANDLED WATER PITCHER - MARI. (RARE AND DESIRABLE ITEM; HAS A CHECK IN TOP OF THE HANDLE)**
- _____ 51. Dugan Grape Delight 6 ftd. Ruffled Rose Bowl - Purp. (dark color with bright irid.)
- _____ 52. 7" Dugan Fishscale and Beads low 8 Ruffled Bowl - Purp. (sorta scarce in this color; nice irid.)
- _____ 53. **5 1/4" TALL x 6 1/4" DIAM. X 3 5/8" BASE DUGAN PULLED LOOP SQUATTY FLARED VASE - WHITE (QUITE A RARE ITEM; A DIFFERENT MOLD WITH GREAT IRID. - 2 SMALL FLAKES UNDER BASE)**
- _____ 54. **10 1/4" EUROPEAN PODS AND POSIES (FOUR FLOWER VARIANT) LG. 10 RUFFLED BOWL WITH OVAL EXT. - EMERALD GREEN (RARE ITEM WITH A BRIGHT BASE GLASS AND NICE IRID.)**
- _____ 55. 8" Imperial Windmill 8 Ruffled Bowl - Purp. (scarce with bright irid.; has one bit of spottiness)
- _____ 56. 8" Imperial Acanthus Deep Round Bowl - Smoke (scarce with super irid.)
- _____ 57. 9" Imperial Open Rose Flat Plate - Dk. Mari. (really nice and dark with great detail)
- _____ 58. Pr. 8 1/2" Tall Fenton Fine Rib Standard Swung Vase - Lt. Mari. (rare pair with light irid.; unusual)
- _____ 59. 9 1/2" Tall Fenton Fine Rib Standard Swung Vase - Aqua/ Mari. (very scarce base color; has small manuf. check in base)
- _____ 60. **N POPPY SHOW FLAT PLATE - ICE BLUE (RARE AND VERY DESIRABLE; NICE COLOR WITH GREAT IRID.; HAS TINY CHIP ON PATTERN)**
- _____ 61. **N PEACOCKS FLAT PLATE WITH RIBBED EXT. - MARI. (VERY SCARCE WITH SORTA PASTEL IRID.; A BIT LIGHTER IN THE MIDDLE)**
- _____ 62. **9 1/2" FENTON LEAF CHAIN FLAT PLATE WITH BERRY EXT. - MARI. (GETTING TO BE A RARE ITEM TO FIND; PRETTY NICE EXAMPLE)**
- _____ 63. **N PEACH TUMBLER - ELEC. BLUE (VERY SCARCE WITH REALLY NICE IRID.)**
- _____ 64. N Peach Tumbler - White/ Gold Decor. (very scarce; frosty with pretty good gold)
- _____ 65. **N PEACOCK AT THE FOUNTAIN TUMBLER - ICE BLUE (RARE; DESIRABLE - A PRETTY NICE EXAMPLE)**
- _____ 66. N Barbella Enameled Apple Blossom Tumbler - Blue (actually quite a tough item to find; really nice)
- _____ 67. N Wishbone Tumbler - Dk. Mari. (scarce; nice color and detail)
- _____ 68. **N CONCAVE DIAMOND STRETCH TANKARD LEMONADE GLASS - VASELINE (RARE AND DESIRABLE WITH EXCELLENT COLOR AND IRID.)**
- _____ 69. **N ACORN BURR TUMBLER - ELEC. PURP. (ABSOLUTELY SUPER EXAMPLE WITH BEAUTIFUL IRID.)**
- _____ 70. **N ORIENTAL POPPY TUMBLER WITH ETCHED "M.U. YARMAN - 1914" - BLUE (RARE COLOR; DARK WITH NICE IRID.)**
- _____ 71. Dugan Heavy Iris Tumbler - Elec. Mari. (super bright irid.)
- _____ 72. Dugan Dahlia Tumbler - Dk. Mari. (sorta scarce and nice)
- _____ 73. **U.S. GLASS COSMOS AND CANE TUMBLER WITH "J.R. MILNER; LYNCHBURG, VA" ADV. - HONEY AMBER (RARE AND VERY DESIRABLE; NICE IRID.)**
- _____ 74. Jana Geometric Patterned Tankard Tumbler - Aqua/ Mari. (very unusual item in a rare color)
- _____ 75. **M'BURG HANGING CHERRIES TUMBLER WITH MANUF. GROUND BASE - DK. MARI. (RARE AND DESIRABLE WITH DARK IRID. AND MANUF GROUND BASE)**
- _____ 76. **FENTON BUTTERFLY AND BERRY TUMBLER - GREEN (RARE ITEM IN THIS COLOR; A DARK BRIGHT IRID.)**
- _____ 77. Fenton Engraved Grape Etched Tankard Tumbler - Grecian Gold (scarce)
- _____ 78. Maker (?) 2 pc. Covered Honey Jar - Aqua (nice base color)
- _____ 79. Fenton Peacock at the Urn 6 Ruffled Compote - Crystal Blue (not carnival but actually quite rare)
- _____ 80. **9 1/2" FENTON LOTUS AND POINSETTIA LG. ICE CREAM SHAPED FTD. BOWL - GREEN (RARE SIZE AND COLOR; HAS SATINY FINISH)**
- _____ 81. Fenton Orange Tree ftd. Hatpin Holder - Mari. (scarce; nice detail and in pretty good shape)
- _____ 82. Fenton Orange Tree Breakfast Creamer - Mari. (satiny irid.)
- _____ 83. 8" Fenton Ribbon Tie Ice Cream Shaped Bowl - Green (satiny irid.)
- _____ 84. 8 1/2" Fenton Holly Ice Cream Shaped Bowl - Teal Blue (rare base color combination; very attractive)
- _____ 85. **FENTON PERSIAN MEDALLION LG. 6 RUFFLED CRIMPED EDGE COMPOTE - GREEN (VERY SCARCE COLOR FOR THIS SIZE; REALLY NICE)**
- _____ 86. **8 1/2" FENTON DRAGON AND LOTUS 8 RUFFLED CRIMPED EDGE BOWL - GREEN (REALLY ODD SHAPE; BRIGHT COLOR AND IRID.)**
- _____ 87. 8 1/2" Fenton Dragon and Lotus 8 Ruffled Bowl - Amy. (scarce base color with a silvery irid.)
- _____ 88. Fenton Two Flowers Spatula ftd. Rose Bowl - Blue (very scarce and desirable; super example)

89. Fenton Butterflies 2 sided 2 Handled Bon Bon - Amy. (really nice; has a bright satiny irid.)
90. **FENTON FENTONIA HANDLED WATER PITCHER - MARI. (RARE AND DESIRABLE; PRETTY NICE COLOR - GETS A BIT LIGHTER AT THE BASE)**
91. 6" Fenton Lotus and Poinsettia ftd. 6 Ruffled Sauce - Aqua/ Mari. (scarce base color; nice satiny finish)
92. 5 3/4" Fenton Two Flowers ftd. Round Flared Sauce - Pop Bottle Aqua/ Lt. Mari. (odd item; light colors)
93. 6 3/4" Fenton Peacock and Dahlia 6 Ruffled Bowl - Aqua/ Mari. (scarce base color)
94. Fenton Paneled Dandelion Tumbler with Manuf. Ground Base - Dk. Mari. (nice satiny finish)
95. **16" TALL x 4 1/8" BASE FENTON RUSTIC MID SIZE SWUNG VASE WITH TIGHT CRIMPED EDGE - SUN COLORED AMY. (NICE SIZE AND IRID.; BASE COLOR IS A LIGHT PURPLE)**
96. 16" Tall x 4 1/8" Base Fenton Rustic Mid Size Swung Vase - Amy. (attractive item with nice irid.)
97. 9 5/8" Tall Fenton Rustic Standard Swung Vase - Blue (attractive items)
98. 10 1/2" Tall Fenton Butterfly and Berry Swung Vase - Blue (nice size; has nice irid.)
99. Pr. 8 3/4" Tall N'wood Paneled Stretch Candlesticks - Dk. Celeste Blue (has gold trim; nice color)
100. Pr. 8 3/4" Tall N'wood Paneled Stretch Candlesticks - Lighter Celeste Blue (has gold trim and nice color)
101. 4 1/2" Tall x 7 1/2" Diam. N'wood Stretch Turned in Rose Bowl - Celeste Blue (nice size and color; has gold trim)
102. 10" Fenton Stretch Flared Console Bowl - Celeste Blue (nice color and irid.)
103. 11 1/4" Fenton (?) Stretch Lg. Flared Centerpiece Bowl - Celeste Blue (nice color and shape)
104. 3 1/2" Tall x 7 1/4" Diam. U.S. Glass Stretch ftd. Turned in Rose Bowl - Opaque Green (has a ribbed pattern; nice irid.)
105. **WESTMORELAND FILE AND FAN STEMMED 6 RUFFLED COMPOTE - BLUE OPAL. (VERY SCARCE AND DESIRABLE; OPAL. ON THE EDGE WITH A DARK BASE COLOR)**
106. 1909 U.S. Glass Louisville Shriners Champagne Glass - Clear/ Decor. (nice decor.)
107. 1911 U.S. Glass Rochester, NY Shriners Champagne Glass - Clear/ Decor. (nice decor.)
108. 4 1/2" Imperial Flute Variant ind. Berry Bowl - Dk. Mari. (nice color; scarce)
109. Imperial Star and File Handled Spooner - Dk. Mari. (nice color)
110. 14 1/2" Tall x 3 7/8" Base Imperial Ripple Mid-Size Swung Vase - Lt. Aqua / Dk. Mari. (scarce size and color; has manuf. peeling on edge)
111. **14 1/4" TALL x 3 3/8" BASE IMPERIAL RIPPLE MID-SIZE SWUNG VASE - AMBER (RARE BASE COLOR IN A SCARCE SIZE; NICE)**
112. 12 1/2" Tall x 3 3/8" Base Imperial Ripple Mid-Size Swung Vase - Helios Green (nice size and color)
113. 9" Imperial Diamond Ring 8 Ruffled Bowl - Smoke (nice irid.)
114. Imperial Windmill Handled Milk Pitcher - Mari. (nice color and detail)
115. **9 M'BURG TROUT AND FLY 6 RUFFLED BOWL - AMY. (RADIUM AND VERY DESIRABLE; ATTRACTIVE IRID. AND NICE DETAIL)**
116. **9 1/2" M'BURG NESTING SWAN 6 RUFFLED BOWL - AMY. (RADIUM AND VERY ATTRACTIVE; HAS A DARK BRIGHT IRID.)**
117. 5 1/2" M'burg Peacock Flared ind. Berry Bowl - Amy. (radium; has no bee and no beading - really nice item)
118. M'burg Holly Sprig Tri-Cornered Handled Nappy - Amy. (radium and very attractive; nice)
119. 5 5/8" M'burg Blackberry Wreath ind. Ice Cream Bowl - Amy. (radium and attractive - really nice)
120. 9" M'burg Grape Wreath Variant 6 Ruffled Crimped Edge Bowl - Green (another radium example that's really nice)
121. 9 1/2" M'burg Primrose 6 Ruffled Bowl - Mari. (nice radium example)
122. 10" M'burg Primrose 6 Ruffled Bowl - Mari. (scarce; satiny)
123. Dugan S Repeat Handled Cup - Purp. (nice item)
124. Dugan Vintage Grape Stemmed Wine Glass - Amy. (nice irid.)
125. **8 1/2" DUGAN FIVE HEARTS DOMED ICE CREAM SHAPED BOWL - MARI. (VERY SCARCE PATTERN; A NICE SATINY EXAMPLE)**

START OF SECOND SESSION

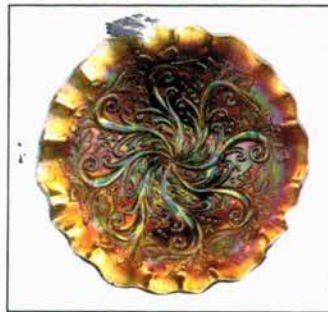
126. 9 3/4" Dugan Four Flowers Lg. 6 Ruffled Bowl - P. Opal. (scarce; nice opal.)
127. (4) 6" Dugan Four Flowers 8 Ruffled Sauces - Dk. P. Opal. (pretty nice examples; selling choice)
128. Dugan Open Opals Tri-Cornered Crimped Edge Compote - Lt. P. Opal. (attractive shape)
129. N Singing Birds Stippled Handled Mug - Custard / Nutmeg (nice decor.; scarce)
130. **N SINGING BIRDS HANDLED MUG - LAVENDER/ LT. AMY. (SORTA LIGHT BASE COLOR WITH NICE IRID.)**
131. N Singing Birds Handled Mug - Blue (scarce; nice color)
132. N Singing Birds Stippled Handled Mug - Mari. (nice color and irid.)
133. 7" Tall N Tree Trunk Squatty Swung Vase - Green/ Mari. (desirable size; nice)
134. 8 5/8" Tall N Tree Trunk Flared Vase - Dk. Mari. (scarce; nice color; a different mold than above)
135. **N CORN VASE WITH PLAIN BASE - WHITE (VERY SCARCE; FROSTY WITH LIGHT COLOR AND IRID.)**
136. 10 5/8" N Fine Rib Swung Vase - Purp. (nice irid.)
137. N Fine Cut and Roses ftd. 6 Ruffled Candy Dish - Purp. (nice interior irid.)
138. 8 1/2" N Wishbone ftd. 8 Ruffled with Ruffles and Rings Ext. - Mari. (nice satiny finish)
139. 6 3/16" N Fruit and Flowers 6 Ruffled Sauce with Basketweave Ext. - Amy. (nice irid.)
140. **N PEACOCKS 8 RUFFLED BOWL WITH RIBBED EXT. - PURP. (VERY SCARCE AND DESIRABLE; REALLY NICE IRID. AND DETAIL)**
141. **N PEACOCK AT THE FOUNTAIN LG. FTD. RUFFLED FRUIT BOWL - MARI. (SCARCE AND DESIRABLE; HAS AVERAGE COLOR)**
142. **(2) N G & C COLOGNE BOTTLE STOPPERS ONLY - GREEN (EXTREMELY DIFFICULT ITEMS IF YA NEED THEM; SELLING CHOICE)**
143. 10" N G & C 8 Ruffled Bowl with Basketweave Ext. - Purp. (nice bright satiny finish)
144. **N G & C BANDED FTD. BANANA BOAT - MARI. (SCARCE VARIATION; NICE COLOR AND IRID.)**
145. N Leaf and Beads ftd. Rose Bowl - Mari. (nice color and irid.)
146. European - Mari.
147. 9" European Pods and Posies 8 Ruffled Bowl - Amy. (scarce and desirable with really nice irid.)
148. Westmoreland Corinth J.I.P. Vase - Amber (scarce base color)
149. **6 1/2" TALL EUROPEAN FLEUR DE LEI CYLINDER VASE - DK. MARI. (RARE AND DESIRABLE ITEM; HAS SUPER DARK IRID.)**

150. **7" TALL x 5" DIAM. X 3 3/8" BASE IMPERIAL RIPPLE SQUATTY SWUNG VASE - PURP. (FOR SOME REASON I JUST LOVE THIS ITEM - A NEAT SHAPE AND MOLD - HAS A COUPLE NO HARM DINGS)**
151. 13 1/2" Tall Imperial Threefold Swung Vase - Purp. (scarce; nice irid.)
152. 6 3/4" Tall Imperial Miniature Morning Glory Odd Swung Vase - Dk. Mari. (nice color and shape)
153. 6 3/4" Tall Imperial Miniature Morning Glory Odd Swung Vase - Dk. Mari. (nice color and shape)
154. 6" Tall Imperial Miniature Morning Glory Swung Vase - Dk. Mari. (nice dark color)
155. Imperial Corn Bottle - Dk. Mari. (very scarce with great irid.; flake on spout)
156. Pr. 8 3/4" Imperial 8 sided Wide Panel Candlesticks - Mari./ Clear (scarce pair)
157. Imperial Double Scroll Candlestick - Smoke (very scarce; super example)
158. **9" IMPERIAL OPEN ROSE FLAT PLATE - GREEN (SCARCE AND DESIRABLE; PERFECT WITH NICE DETAIL)**
159. 9" Imperial Pansy 8 Ruffled Bowl - Purp. (scarce; has a goldish irid.)
160. 6" Imperial Embossed Scroll 8 Ruffled ind. Berry Bowl with File Ext. - Purp. (scarce; a really nice example)
161. **(5) 5 - 5 1/4" IMPERIAL ZIPPERED HEART 6 RUFFLED IND. BERRY BOWLS - PURP. (VERY SCARCE ITEMS; SELLING SO MUCH EACH FOR SET)**
162. 7 3/4" Imperial Sand and Shell Deep 8 Ruffled Bowl - Amy. (scarce with nice reddish, gold irid.)
163. 4 7/8" Imperial Heavy Grape ind. Round Berry Bowl - Purp. (scarce; super color and irid.)
164. Imperial Heavy Grape Handled ind. Berry Bowl or Nappy - Purp. (scarce with super bright irid.)
165. **9" IMPERIAL OPEN ROSE FTD. ICE CREAM SHAPED CENTERPIECE BOWL - AMBER (RARE ITEM IN A RARE COLOR; NICE GOLD HIGHLIGHTS AND PERFECT)**
166. 7 3/4" Imperial File Exterior Deep 6 Ruffled Bowl - Purp. (very scarce; great color and irid.)
167. Imperial Robin Handled Mug - Mari. (nice color)
168. Imperial Star Medallion Lg. Tumbler - Mari. (nice color)
169. Imperial Hobstar Band 7 pc. Water Set - Mari. (scarce set; pretty well matched)
170. **10 1/2" DUGAN FARMYARD LG. 6 RUFFLED BOWL WITH JEWELLED HEART EXTERIOR - PURP. (RARE AND ALWAYS DESIRABLE; HAS SUPER INTERIOR IRID.)**
171. **11" DUGAN HEAVY GRAPE LG. 8 RUFFLED BOWL WITH COMPASS EXT. - PURP. (RARE AND DESIRABLE; SUPER SIZE AND IRID.)**
172. **10 3/4" DUGAN SKI STAR LG. 6 RUFFLED BOWL WITH COMPASS EXT. - AMY. (VERY SCARCE; HAS A SUPER REDDISH IRID.)**
173. 7 1/4 - 1/2" Dugan Fishscale Flared Crimped Edge Plate - P. Opal. (scarce; nice opal. and shape)
174. **DUGAN MARY ANN HANDLED VASE - MARI. / LIME GREEN / VASELINE (RARE BASE COLOR; AN ODD GREEN / VASELINE - DOESN'T TAKE TO A BLACK LIGHT)**
175. 9" Dugan Lined Lattice Swung Vase - Purp. (scarce with really nice irid.)
176. 6" tall x 6 1/4" Flare x 3 5/8" Base Dugan Target Squatty Flared Swung Vase - Dk. P. Opal. (scarce and desirable shape with nice opal. and irid.)
177. Dugan Basketweave Ruffled Fruit Bowl Base/ Hat - Mari. (satiny; scarce)
178. Dugan Floral and Grape Whimsy J.I.P. Hat from Tumbler - Mari. (nice shape; sorta radium)
179. Dugan Interior Swirl Tri-Cornered Pinched in Rose Bowl - Dk. P. Opal. (scarce and a pretty nice example; dark color)
180. 9" Dugan Apple Blossom Twig Bowl with 3 in 1 Edge and Basketweave Ext. - P. Opal. (attractive example; nice color and opal.)
181. Dugan Ski Star Tri-Cornered Crimped Edge domed Bowl with Compass Ext. - Dk. P. Opal. (scarce shape and a really nice example)
182. 7" Dugan Fishscale and Beads low 8 Ruffled Bowl/ Plate - P. Opal. (scarce with nice opal.)
183. Dugan (N'wood) Daisy and Plume 3 ftd. Oval Ruffled Candy Dish - P. Opal. (scarce item with dark color and opal.)
184. Dugan Open Opals Tri-Cornered Crimped Edge Stemmed Compote - P. Opal. (scarce and desirable shape; nice opal. tips)
185. **9 1/4" DUGAN FANCIFUL FLARED PLATE - AMY. (VERY SCARCE AND DESIRABLE; A NICE SATINY EXAMPLE)**
186. Dugan Fishermans Handled Mug - Amy. (scarce; a lighter base color)
187. Dugan Peacock at the Fountain Tumbler - Blue (satiny irid.; nice detail)
188. Dugan Maple Leaf Butter Base only - Amy. (scarce part; nice color and irid.)
189. 6" M'burg Cosmos Ice Cream Shaped Bowl - Green (scarce with a goldish radium finish)
190. **9 1/2" M'BURG MANY STARS BOWL WITH 3 IN1 EDGE AND 6 POINTED STAR - LT. MARI. (RARE AND DESIRABLE; LIGHT COLOR WITH A RADIUM FINISH)**
191. 9" M'burg Blackberry Wreath Bowl with 3 in 1 Edge - Amy. (satiny finish)
192. 6 1/4" M'burg Blackberry Wreath 6 Ruffled ind. Berry Bowl - Lt. Mari. (satiny)
193. 6 1/4" M'burg Blackberry Wreath 6 Ruffled ind. Berry Bowl - Amy. (radium and very attractive)
194. 9" M'burg Blackberry Wreath 6 Ruffled Bowl - Green (radium; attractive)
195. **6 1/4" M'BURG GRAPE WREATH OR STRAWBERRY WREATH VARIANT SAUCE WITH ODD 3 IN 1 CRIMPING - DK. MARI. (RADIUM AND VERY ATTRACTIVE; ODD SHAPE WITH GREAT IRID.)**
196. M'burg Peacock Tail Variant Stemmed 6 Ruffled Compote - Mari. (radium finish and nice)
197. 7 1/4" M'burg Hanging Cherries Ice Cream Shaped Bowl - Mari. (scarce with a nice satiny finish)
198. 8 1/4" M'burg Grape Wreath Variant odd 6 Ruffled Bowl - Amy. (radium and desirable with nice irid.)
199. 8 1/2" M'burg Grape Wreath Variant 6 Ruffled Bowl - Amy. (another radium example with really nice irid.)
200. **10 1/2" M'BURG SEAWEEED LG. BOWL WITH 3 IN1 EDGE - AMY. (RARE AND VERY DESIRABLE WITH A SUPER SATINY FINISH)**
201. M'burg Boutonniere Stemmed 6 Ruffled Compote - Amy. (scarce with an average satiny finish)
202. 9 1/2" M'burg Rays and Ribbons Deep Round Flared Bowl - Amy. (radium and really desirable; nice)
203. 9 1/4" M'burg Rays and Ribbons 6 Ruffled Crimped Edge Bowl - Green (radium with a desirable shape and nice irid.)
204. 10" M'burg Whirling Leaves Lg. 6 Ruffled Bowl - Green (attractive satiny example; nice)
205. **N PEACOCKS BOWL WITH P.C.E. AND RIBBED EXT. - EMERALD GREEN (RAE AND VERY DESIRABLE; HAS A BRIGHT IRID. AND BASE COLOR)**
206. **N PEACOCKS STIPPLED PLATE WITH RIBBED EXT. - MARI. (RARE AND DESIRABLE WITH A NICE FINISH)**
207. **N PEACOCK AT THE FOUNTAIN LG. 3 FTD. RUFFLED FRUIT BOWL - ELEC. BLUE/ BLUE (RARE & VERY DESIRABLE; GREAT COLOR AND IRID.)**

208. 5 1/2" N Peacock at the Urn ind. Ice Cream Bowl - Blue (scarce; nice color with goldish irid.)
209. N G & C Handled Water Pitcher - Purp. (scarce with nice color and irid.)
210. **10 1/2" N G & C LG. ICE CREAM BOWL WITH BASKETWEAVE EXT. - GREEN (RARE AND VERY DESIRABLE COLOR; HAS A DARK FINISH WITH REDDISH HIGHLIGHTS)**
211. **N G & C WHISKEY DECANTER AND STOPPER - MARI. (RARE AND DESIRABLE ITEM; PRETTY WELL MATCHED)**
212. **8 1/2 - 3/4" N G & C VARIANT STIPPLED 8 RUFFLED BOWL WITH RIBBED EXT. - DK. MARI. (VERY SCARCE WITH DARK, ATTRACTIVE COLOR AND IRID.)**
213. 8 3/4" N G & C Variant 8 Ruffled Bowl with Plain Ext. - Purp. (scarce item; has a stain line)
214. 8 1/2" N G & C Flared Plate with Basketweave Ext. - Mari. (scarce; has a satiny finish)
215. N G & C Small size 3 ftd. Ruffled Fruit Bowl - Dk. Mari. (scarce and desirable size; great color and nice irid.)
216. N G & C Cologne Bottle and Stopper - Dk. Mari. (really nice example; dark with super irid.)
217. **9" N THREE FRUITS 8 RUFFLED BOWL WITH PLAIN EXT. - PASTEL MARI. (SUPER IRID. ON THIS ITEM; VERY ATTRACTIVE)**
218. 8 3/4" N Three Fruits Stippled 8 Ruffled Bowl with Ribbed Ext. - Mari. (scarce; nice color and irid.)
219. **N DRAPERY RUFFLED ROSE BOWL - AQUA OPAL. (RARE AND DESIRABLE WITH A LIGHT OVERLAY)**
220. **N DAISY AND DRAPERY FTD. TURNED IN VASE - PURP. (RARE AND VERY DESIRABLE ITEM; PERFECT WITH NICE IRID.)**
221. **N DAISY AND DRAPERY FTD. FLARED VASE - DK. MARI. (ANOTHER RARE N'WOOD ITEM WITH NICE COLOR AND IRID.)**
222. **N PEACOCK AT THE FOUNTAIN TUMBLER - GOLD / GREEN FLASH IRID. (SEEMS TO BE A RARE EXPERIMENTAL ITEM; SUPER UNUSUAL)**
223. N Peacock at the Fountain Tumbler - Green (rare color; nice irid; has 2 chips on base)
224. N Daisy and Plume ftd. Ruffled Rose Bowl with Berry Int. - Amy. (scarce and desirable; perfect with nice attractive irid.)
225. **12 3/4" TALL x 4 3/4" DIAM x 4 3/4" BASE N TREE TRUNK MID-SIZE SWUNG VASE - BLUE / ELEC. BLUE (RARE AND VERY DESIRABLE WITH ELEC. BLUE HIGHLIGHTS - REALLY NICE ITEM)**
226. **6" TALL x 5 1/4" DIAM. X 3 1/2" BASE N TREE TRUNK SQUATTY FLARED VASE - GREEN (VERY SCARCE AND DESIRABLE; REALLY NICE COLOR, SIZE AND IRID.)**
227. 6" Tall x 4 3/4" Diam. X 3 1/2" Base N Tree Trunk Squatty Flared Vase - Dk. Mari. (scarce and very desirable; has satiny irid.)
228. **N POPPY SHOW FLARED PLATE - MARI. (RARE AND DESIRABLE; PERFECT WITH NICE AVERAGE IRID.)**
229. **N ROSE SHOW FLARED PLATE - ICE GREEN (VERY RARE AND VERY DESIRABLE; NICE COLOR AND IRID. - A TOUGHIE!)**
230. **(4) N PEACOCK AT THE FOUNTAIN TUMBLERS - ELEC. BLUE (SUPER EXAMPLES WITH VARIOUS BLUE HIGHLIGHTS; SELLING CHOICE)**
231. N Peacock at the Fountain Tumbler - Blue (another nice example; from bright to silvery irid.)
232. N Peacock at the Fountain Tumbler - Purp. (scarce with nice dark color and irid.)
233. N Oriental Poppy Tumbler - Purp. (scarce; nice color and detail)
234. N Raspberry Tumbler - Purp. (nice color and irid.; pretty attractive)
235. N Peach Tumbler - Elec. Blue (very scarce with bright highlights)
236. **(6) N Grape Arbor Tumblers - Dk. Mari. (excellent examples; great color and irid.; selling so much for set)**
237. N Singing Bird Tumbler - Amy. (scarce; nice irid.)
238. N G & C Stippled Handled Punch Cup - Green (excellent example with super irid.)
239. N G & C domed Flared Sherbet - odd Amy. (sorta horehound base color; really different)
240. **N G & C 7 PC. WATER SET - PURP. (VERY SCARCE WITH REALLY NICE COLOR AND IRID.; WELL MATCHED)**
241. **N G & C COVERED SWEETMEAT COMPOTE - PURP. (VERY SCARCE AND ALWAYS DESIRABLE; NICE COLOR AND IRID.)**
242. N G & C Covered Sugar Bowl - Purp. (scarce item if ya need it; nice color)
243. N G & C Butter lid only - Purp. (scarce part; nice)
244. N G & C 2 Handled 4 sided Bon Bon with Basketweave Ext. - Green (satiny with a lighter mari. overlay)
245. **N G & C 2 HANDLED 4 SIDED BON BON WITH BASKETWEAVE EXT. - EMERALD GREEN (VERY ATTRACTIVE AND DESIRABLE EXAMPLE; REALLY NICE)**
246. 8 1/2 - 3/4" N G & C 8 Ruffled Bowl with Basketweave Ext. - Green (nice item with goldish highlights)
247. 9" N G & C Variant 8 Ruffled Bowl with Basketweave Ext. - Green (nice color with light irid.)
248. 8 3/4" N G & C Variant 8 Ruffled Bowl with Basketweave Ext. - Amy. (nice color and irid.)
249. 9" N G & C low 8 Ruffled Bowl with Plain Ext. - Purp. (scarce; has really nice irid.)
250. **9" N G & C 8 RUFFLED BOWL WITH BASKETWEAVE EXT. - ELEC. PURP. (HAS SUPER IRID.; NICE AND BRIGHT)**
251. N Fine Cut and Roses ftd. Ruffled Rose Bowl - Purp. (scarce with nice color, detail and perfect feet)
252. N Acorn Burr ind. Round Berry Bowl - Purp. (nice color)
253. N Acorn Burr ind. Round Berry Bowl - Dk. Mari. (nice color)
254. (2) N Peacock at the Fountain ind. Berry Bowls - Purp. (both are nice; selling choice)
255. **9" N GOOD LUCK 8 RUFFLED BOWL WITH RIBBED EXT. - PURP. (VERY SCARCE AND DESIRABLE; HAS A NICE MULTI-COLORED IRID.)**
256. **9" N GOOD LUCK 8 RUFFLED BOWL WITH BASKETWEAVE EXT. - PURP. (SCARCE AND DESIRABLE WITH NICE AVERAGE COLOR AND IRID.)**
257. N Good Luck Bowl with P.C.E. and Basketweave Ext. - Mari. (scarce with really nice color and irid.)
258. **8 1/2" N THREE FRUITS 8 RUFFLED BOWL WITH PLAIN EXT. - DK. MARI. (SUPER COLOR AND BRIGHT IRID.; REALLY NICE ITEM)**
259. 9" N Grape Leaves 8 Ruffled Bowl - Purp. (nice satiny example)
260. **N BEADED CABLE FTD. RUFFLED ROSE BOWL - AQUA OPAL. (ALWAYS A DESIRABLE PASTEL ITEM; NICE IRID.)**
261. **7 3/4" N WILD STRAWBERRY HANDGRIP PLATE WITH BASKETWEAVE EXT. - GREEN (VERY SCARCE; NICE BASE COLOR AND IRID.)**
262. 10" N Wishbone 8 Ruffled Bowl with Basketweave Ext. - Green (scarce; has a nice satiny finish)
263. 7 1/2" Tall N Drapery Swung Vase - Dk. Mari. (scarce with really nice dark color)
264. 11 3/4" Tall N Tree Trunk Tall Swung Vase - Purp. (sorta tall; nice color and gold highlights)

265. **6 5/8" TALL FENTON IDYLL TURNED IN DOMED VASE - DK. MARI. (ALTHOUGH THIS ITEM HAS SOME DAMAGE - IT'S A SUPER EXAMPLE IN A SUPER SHAPE - NEAT!)**
266. **9 7/8" TALL FENTON FINE RIB SWUNG VASE - RED (RARE AND ALWAYS DESIRABLE; DARK COLOR AND DARK IRID.)**
267. 10 1/2" Tall Fenton Fine Rib Swung Vase - Aqua/ Teal (rare and desirable base color; nice)
268. **9 3/4" TALL FENTON FINE RIB SWUNG VASE - LT. MARI./ VASELINE (VERY SCARCE AND VERY DESIRABLE; ATTRACTIVE)**
269. 9 3/4" Tall Fenton Fine Rib Swung Vase - Blue (nice color)
270. 7" Tall Fenton Diamond Point Columns Squatty Swung Vase - Green (scarce base color in a squatty size; nice)
271. 10 3/4" Tall Fenton Knotted Beads Swung Vase - Amy. (scarce base color for this pattern; nice)
272. 9 3/4" Tall Fenton Rustic Swung Vase with Tight Crimped Edge - Blue (attractive shape with nice color and irid.)
273. Fenton Blackberry Block Tumbler - Blue (actually quite an attractive example)
274. (2) Fenton Paneled Dandelion Tumblers - Green (scarce; satiny; has manuf. ground base; selling choice)
275. **FENTON FLORAL AND GRAPE HANDLED BULBOUS WATER PITCHER - BLUE (SCARCE AND DESIRABLE WITH NICE IRID.)**
276. Fenton Floral and Grape Tumbler - Blue (scarce)
277. 8 1/4" Fenton Vintage Grape Bowl with Tight Crimped Edge - Amy. (nice satiny item)
278. 6" Fenton Peacock Tail Tri-Cornered Sauce - Green (nice satiny item)
279. 8" Fenton Stag and Holly Spatula ftd. 8 Ruffled Bowl - Mari. (scarce and satiny)
280. **FENTON HOLLY STEMMED 6 RUFFLED COMPOTE - RED (RARE AND VERY DESIRABLE; GREAT COLOR AND IRID.)**
281. Fenton Birds and Cherries Stemmed 6 Ruffled Compote - Amy. (scarce; nice color and irid.)
282. Fenton Persian Medallion Lg. Stemmed 6 Ruffled Crimped Edge Compote - Mari. (very scarce color in this size; nice)
283. **FENTON ORANGE TREE FTD. HATPIN HOLDER - BLUE (SCARCE AND DESIRABLE WITH A NICE SATINY IRID.)**
284. **FENTON ORANGE TREE HANDLED SHAVING MUG - AMY. (VERY RARE BASE COLOR; SILVERY IRID. BUT NICE)**
285. **FENTON ORANGE TREE LG. 3 FTD. RUFFLED FRUIT BOWL - BLUE (VERY SCARCE AND DESIRABLE; NICE COLOR AND IRID.)**
286. 9 1/2" Fenton Holly Bowl with 3 in1 Edge - Blue (scarce; attractive shape and bright satiny irid.)
287. 8 1/4" Fenton Leaf Chain Ice Cream Shaped Bowl - Blue (scarce with nice color and irid.)
288. 9" Fenton Holly 8 Ruffled Bowl - Green (scarce base color with really nice irid.)
289. **8 1/2" FENTON CAPTIVE ROSE BOWL WITH TIGHT CANDY RIBBON EDGE - GREEN (SCARCE AND A SUPER EXAMPLE; REALLY NICE)**
290. **8 3/4" FENTON FANTAIL LG. ICE CREAM SHAPED FTD. BOWL - BLUE (VERY SCARCE AND VERY DESIRABLE WITH BRIGHT COLOR AND IRID.)**
291. **6 1/2" FENTON STIPPLED RAYS 6 RUFFLED SAUCE - RED (RARE AND VERY DESIRABLE; SUPER BASE COLOR)**
292. **FENTON 2 ROW OPEN EDGE 6 RUFFLED HAT - RED (VERY SCARCE AND DESIRABLE; PERFECT)**
293. 8 1/2 - 3/4" Fenton Peacock at the Urn 6 Ruffled Bowl - White (very scarce; frosty with nice detail and irid.)
294. 8 3/4" Fenton Peacock at the Urn 8 Ruffled Bowl - Dk. Mari. (scarce; really nice dark color and irid.)
295. **7 1/2" FENTON G & C 8 RUFFLED BOWL - MARI./ VASELINE (SCARCE BASE COLOR; ATTRACTIVE)**
296. 6" Fenton Lotus and Poinsettia ftd. 6 Ruffled Sauce - Mari./ Vaseline (scarce; nice base color and irid.)
297. Fenton Holly J.I.P. Crimped Edge Hat - Mari./ Vaseline (scarce shape and base color)
298. 8" Fenton Persian Medallion Ice Cream Shaped Bowl - Green (scarce base color; satiny)
299. 8 3/4" Fenton Heart and Vine 6 Ruffled Bowl - Blue (really nice example; very attractive)
300. **9 1/4" FENTON HEART AND VINE FLAT PLATE - BLUE (RARE AND VERY DESIRABLE; THIS EXAMPLE IS QUITE ATTRACTIVE AND FLAT)**
301. **10 1/2" DIAM. X 4 3/4" TALL FENTON PINEAPPLE LG. FTD. RUFFLED FRUIT BOWL - MARI. (A RARE AND VERY DESIRABLE FENTON ITEM; HAS A SATINY FINISH)**
302. 7 1/2" Fenton Vintage Grape Flat Plate - Amy. (very scarce with a radium type finish)
303. Fenton Peacock Tail Stemmed 6 Ruffled Compote - Amy. (satiny irid.)
304. 7 1/2" Tall Fenton Long Thumbprint Swung Vase - Green (satiny)
305. **FENTON FLOWERS FTD. ROSE BOWL - MARI. / VASELINE (RARE AND DIFFICULT BASE COLOR; A TOUGHIE!)**
306. **12 5/8" TALL FENTON FINE RIB MID SIZE SWUNG VASE - AMBER (RARE AND TOUGH ITEM; UNUSUAL)**
307. **FENTON ORANGE TREE STANDARD FLARED HANDLED MUG - AMBER (RARE BASE COLOR; REALLY TOUGH)**
308. Fenton Stretch Wide Panel Round Covered Candy Dish - Celeste Blue (attractive item)
309. 5 1/4 - 1/2" Tall Fenton Small Stretch Fan Vase with Diamond Quilt Int. - Velva Rose (very scarce and difficult item; nice color)
310. **10 1/2" FENTON STRETCH TRIPLE DOLPHIN STRAIGHT FLARED CONSOLE BOWL - ICE BLUE (VERY RARE ITEM; PERFECT AN PASTEL; NICE)**
311. **7" TALL FENTON STRETCH PERFUME BOTTLE AND STOPPER - WISTERIA (RARE AND EXTREMELY DESIRABLE; GREAT COLOR AND IRID.)**
312. Fenton Stretch 2 pc. Tumble Up. - Celeste Blue (attractive and very scarce)
313. Fenton Stretch 2 pc. Tumble Up - Ice Green (another attractive item; really nice)
314. Fenton Stretch ftd. Flared 6 Ruffled Vase - Ice Blue (very scare and desirable; nice color)
315. U.S. Glass Stretch 2 pc. Ribbed Set (ftd. bowl and plate) - Pink (very attractive; selling 2 pcs. as a set)
316. 6" Fenton Two Flowers ftd. 6 Ruffled Sauce - Mari.
317. Fenton Orange Tree Standard Flared Mug - Mari.

Plus, maybe, a few surprises!!!



Burns Auction Service
 P.O. Box 608
 Bath, New York 14810

First Class
 US Postage
PAID
 Permit No. 7
 Hammondsport, NY

2003 Keystone Convention Auction!



LEE MARKLEY
BOX 306
MENTONE IN 46539

