

183



Meet Me in St. Louis

www.cga convention 2003

94



SATURDAY, APRIL 12, 2003 - 9:00 A.M. - C.D.T.

**Held in St. Louis, Missouri at the Crown Plaza Hotel
11228 Lone Eagle Dr., Bridgeton Exit off I-70 Hwy at Exit 235A, Lindbergh South**

Held By the Mickey Reichel Antique & Auction L.C.

Office: 660-882-5292 • Home: 660-882-5283

Direct e-mail: mreichel@undata.com • WEB SITE ON: <http://www.yourauctionpage.com/reichel>

*WOODSLAND WORLD WIDE CARNIVAL GLASS ASSOCIATION CONVENTION
GIANT FLORIDA COLLECTION OF RUDY A. KOVACS & FRED L. WARREN*

193



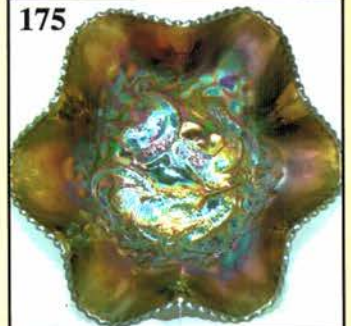
50



34



175



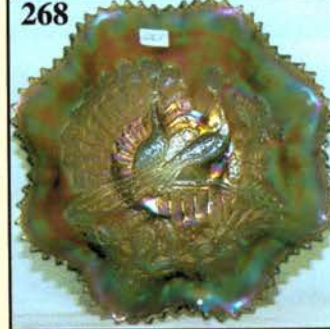
257



151



268



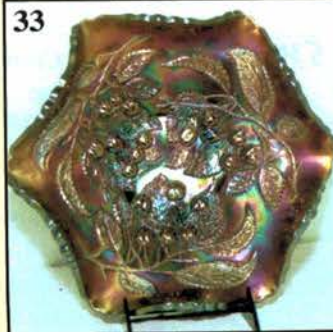
292



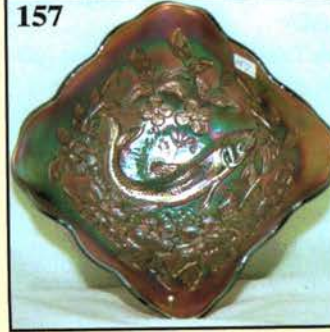
245



33



157



291



EVERYONE IS WELCOME

Held in St. Louis, Missouri at the Crown Plaza Hotel

11228 Lone Eagle Dr., Bridgeton Exit off I-70 Hwy at Exit 235A, Lindbergh South

Preview Friday 3 p.m.-5 p.m. and 7:30 a.m.-9:00 a.m. Day of Auction

CONVENTION INFORMATION FOR HOTEL: 1-800-227-6963 OR 314-291-6700 ASK FOR ANDREW LEFORS

WEB SITE: www.yourauctionpage.com/reichel

ABSENTEE BID POLICY:

WRITE IN BIDS: If you are unable to attend the auction, we will be happy to accept absentee bids which must be received by FRIDAY, APRIL 4, 2003. Don't Delay. E-Mail: mreichel@undata.com

FOR AUCTION PRICE RESULTS: Send \$3.00 and Large S.A.S.E. to 516 Third Street, Boonville, MO 65233-1536

PLEASE NOTE: There is a **\$5 handling charge for each successful bid which will be added to the selling price** for all write-in bids. This is in addition to the cost of postage, insurance and packing. Your write-in bid will be entered just as if you are present and bidding. **Successful bidders will be notified in 1 to 3 days by the auctioneer (so be sure to include your phone number)**. Direct mail bids to Auctioneer Mickey Reichel, 516 Third Street, Boonville, MO 65233-1536. Terms: Cash or Check accepted with proper I.D. and Social Security Number and References. Announcements made day of the auction supercede all printed material. Not Responsible for Accidents or Sold Items.

No return on any items once they leave the Auction Center (No Exceptions).****

Call for additional information: 660-882-5292 days or 660-882-5283 evenings before 9:00 p.m.

FAX: 660-882-5292 (evening hours start FAX transmission after beep)

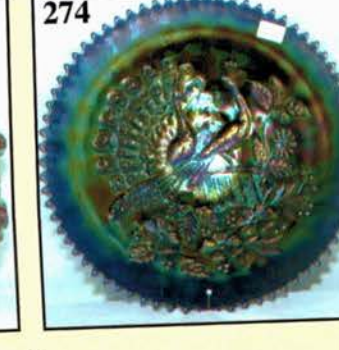
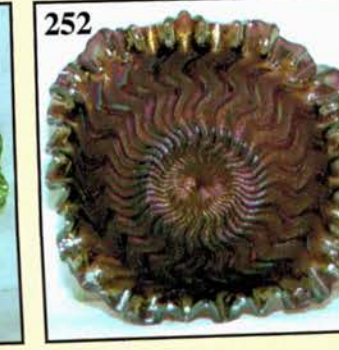
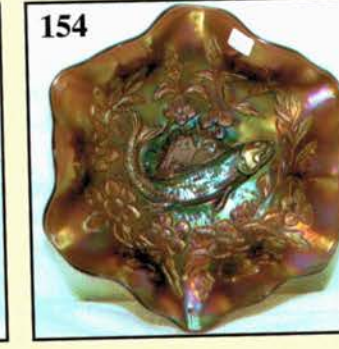
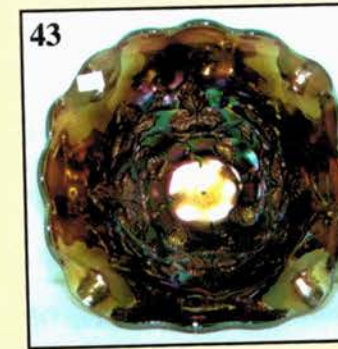
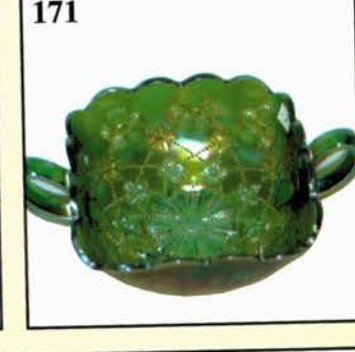
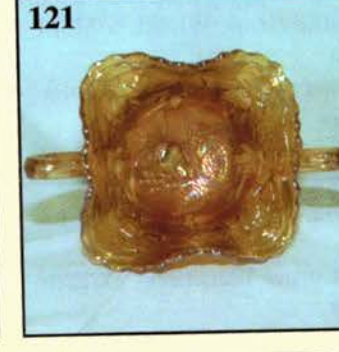
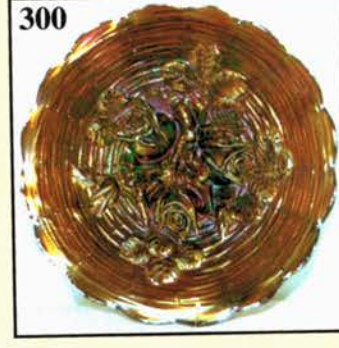
MAIL BIDS: Items are bid on in perfect condition with average or above iridescence OR as listed in the brochures. Bids will not be carried out when damage on an item has been found during the auction.

PEOPLE PRESENT AT AUCTION ARE RESPONSIBLE FOR FINDING ANY PINHEADS, WEAR, SPOTTINESS, MANUFACTURER'S DEFECTS OR ANY OTHER MINOR FLAWS, ETC. *****

NOTE: Read each line, as we have accentuated the type of no particular piece, all are special.

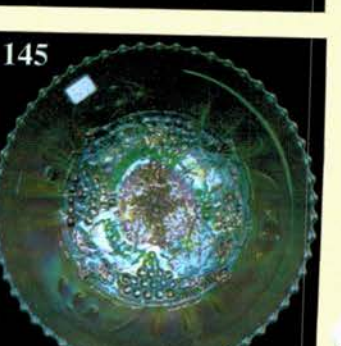
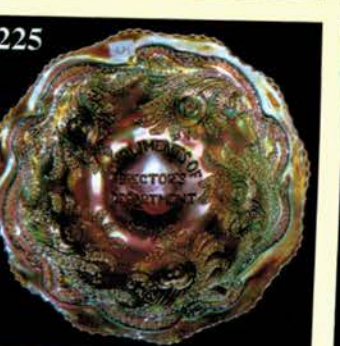
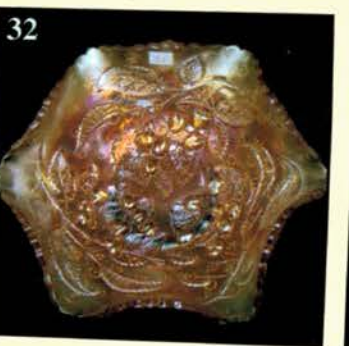
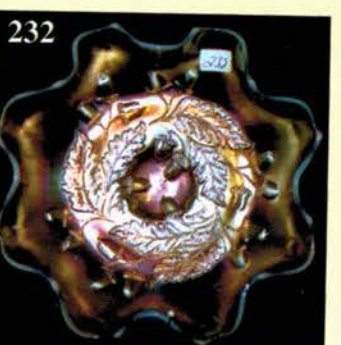
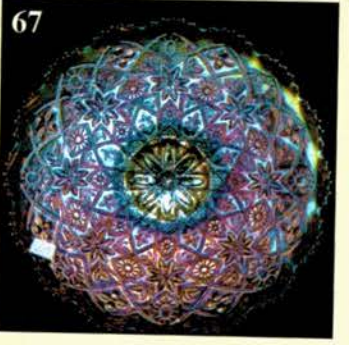
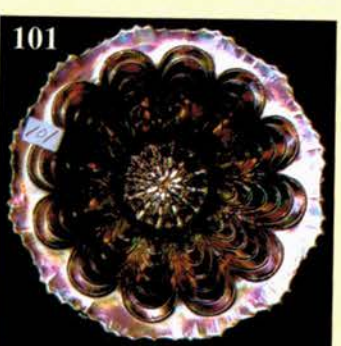
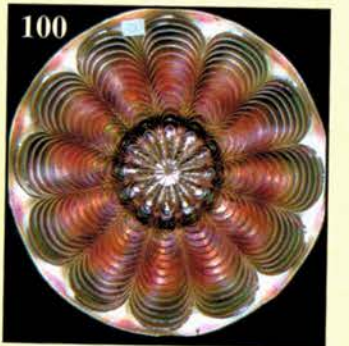
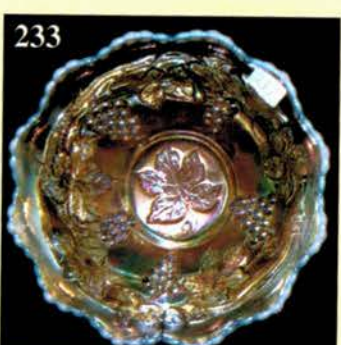
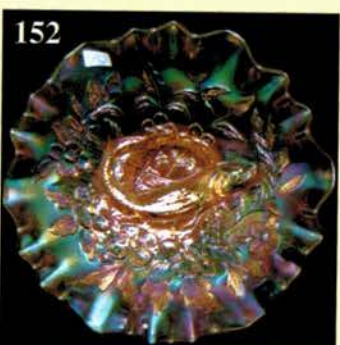
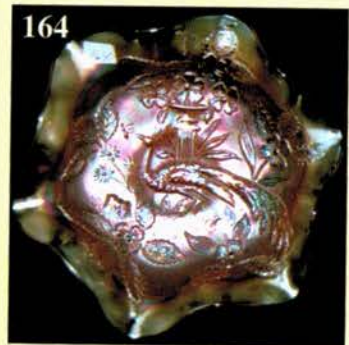
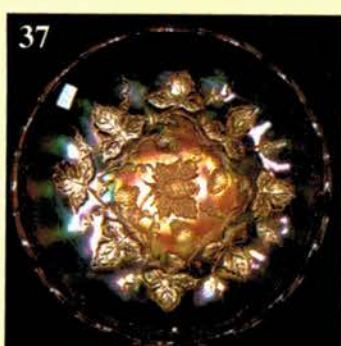
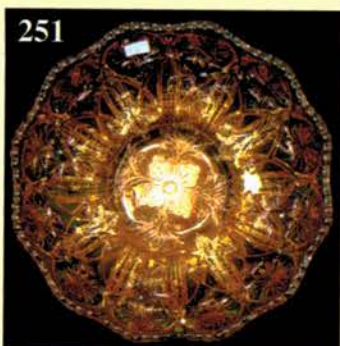
SPECIAL NOTE: Auctioneers have often been accused—and so wrongly, I might add—of excessive hyperbole when it comes to describing the carnival glass items in their auctions. However, this sale is so powerful, with so many great rarities, unusual shapes and spectacular color that I could write a paragraph about almost every piece in the sale. Instead, I will use this opening header to state the above and to remind readers that long-windedness could be applied to virtually every listing. I have suppressed my natural inclination to describe in illustrative terms, depending on the savvy of the buyers and my photographs to show the pieces to their best advantage. With these thoughts in mind, please read and enjoy the brochure! Mickey

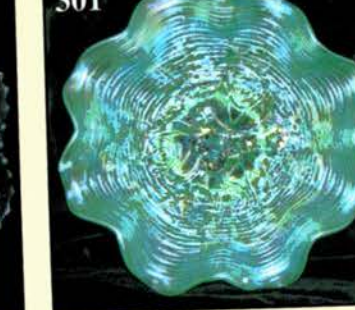
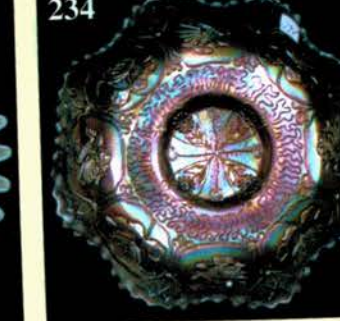
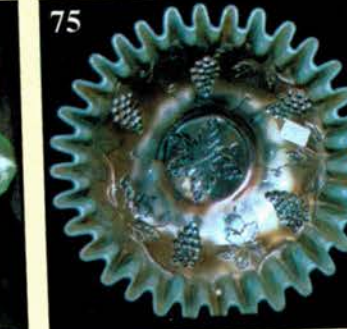
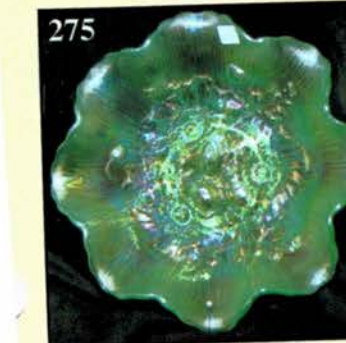
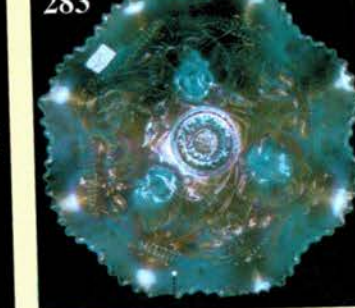
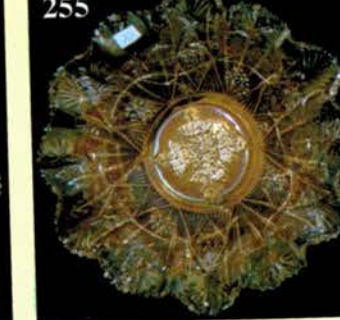
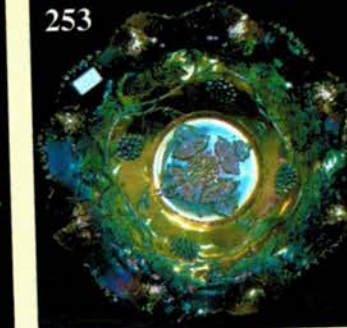
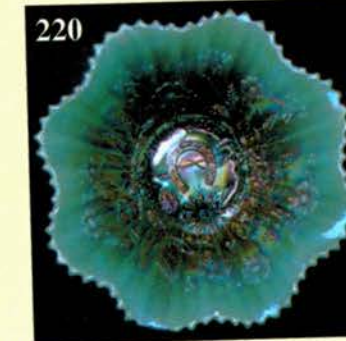
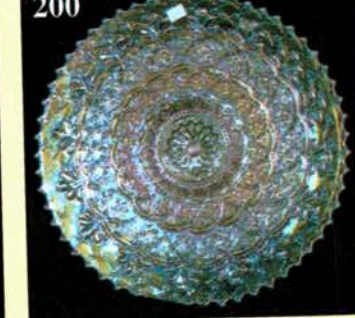
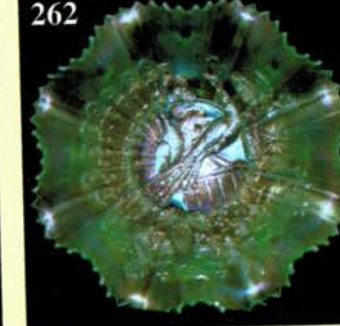
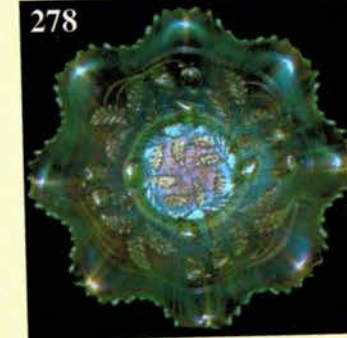
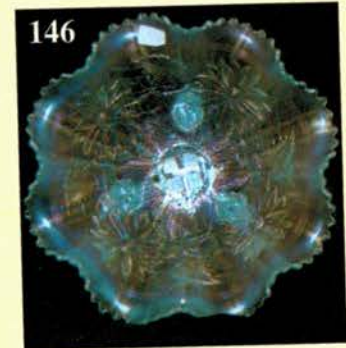
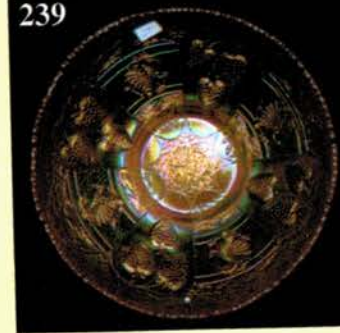
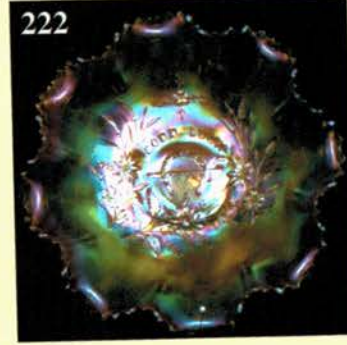
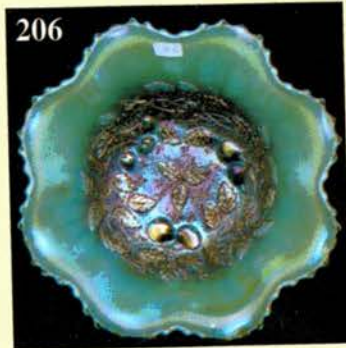
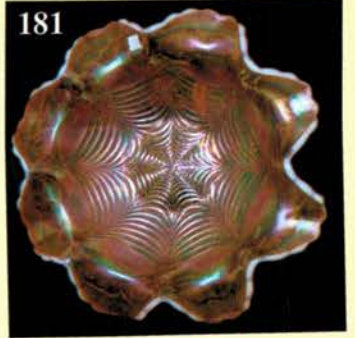
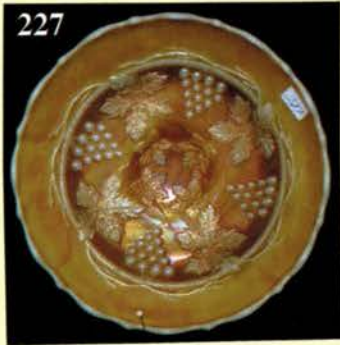
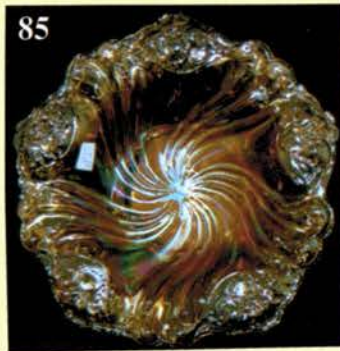
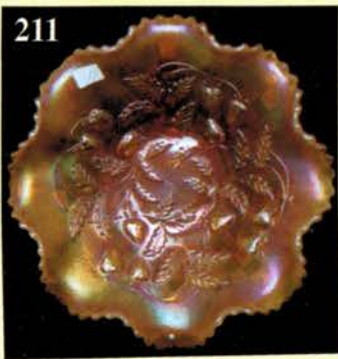
- | | |
|---|---|
| _____ 1. Teal - Imp. Tiger Lily Tumbler - Flared Top | _____ 12. M - Imp. File Spooner - Looks Like A Vase To Me |
| _____ 2. G - <u>N</u> Wishbone Tumbler | _____ 13. M - Imp. 5-1/4" Thumbprint and Ovals Vase |
| _____ 3. M - Fenton Leaf Tiers Tumbler - Good Feet | <u>530</u> _____ 14. P - Imp. Colonial Lady 5-1/2" Tall Vase - No Ground Base |
| _____ 4. B - Fenton Orange Tree Vt. Tumbler, Also Called Orange Tree Scroll | _____ 15. A - Fenton 5-3/4", JIP Long Thumbprint Vase - A Special Look |
| _____ 5. B - Fenton Fluffy Peacock Tumbler | <u>1300</u> _____ 16. G - Fenton 6-1/2" Tall, Diamond and Rib Jardiniere - 6-5/8" Opening - Couple Known? |
| _____ 6. A - Mlbg. Feather and Heart Tumbler | _____ 17. Dark Aqua - Imp. 11" Ripple Vase |
| _____ 7. A - Mlbg. Marilyn Tumbler | _____ 18. M - Imp. Hobstar NuCut 10" Vase - Rare Beauty |
| _____ 8. Deep P - Dugan Dahlia Tumbler | _____ 19. <u>RED</u> - Fenton 10" Fine Rib Vase |
| _____ 9. W - Dugan Grapevine and Lattice Tumbler - WOW! | <u>925</u> _____ 20. Red Slag - Fenton Butterfly and Berry 9" Vase |
| _____ 10. W - Fenton Blueberry Tumbler - Few Around | _____ 21. Yellow Amber - Fenton Butterfly and Berry 9-1/4" Vase |
| _____ 11. M - Imp. File Tumbler | |



- _____ 22. M - Imp. Scroll and Flower Panels 10" Vase - Loads of Pinks
- 2300 23. Giant A - 19-1/4" Fenton Rustic Funeral Vase w/Plunger Base - 7-3/4" Opening
- _____ 24. M - Imp. Poppy Vase - Minor Rim Nick
- ~~1700~~ 25. Radium A - Mlbg. 9-1/2" Swirled Hobnail Vase
- 1700 26. P - Mlbg. 9-7/8" Ohio Star Vase - Multi Electric
- 2400 27. M - Mlbg. 9-1/2" Ohio Star Vase
- _____ 28. M - Mlbg. 8-1/2", 8 Ruffle Grape Pattern w/Leaf Center, Wide Panel Ext.
- _____ 29. A - Mlbg. 8-1/2" ICS Hanging Cherries Bowl - Radium
- _____ 29A. M - Mlbg. 9-1/4" Rd., Flared, Deep Hanging Cherries Master Berry w/6 Matching 5-1/4" Sauces
- _____ 30. G - Mlbg. 10-1/4" Low, ICS Hanging Cherries Bowl - Tried To Be A Chop Plate
- _____ 31. Pastel M - Mlbg. 10", ICS Hanging Cherries Bowl
- 875 32. M - Mlbg. 10" Hanging Cherries 6 Ruffle Bowl w/Rare Hobnail Exterior
- 900 33. P - Mlbg. 10" Hanging Cherries 6 Ruffle Bowl w/Rare Hobnail Exterior
- 1700 34. B - Mlbg. 6", 3 in 1 Edge Hanging Cherries Sauce
- _____ 35. G - Mlbg. 8-3/4, 6 Ruffle Grape Wreath w/Multi Star Center - Radium
- _____ 36. G - Mlbg. 9" Strawberry Wreath 3 in 1 Edge Bowl - Blues In Center
- _____ 37. M - Mlbg. 10" ICS Blackberry Wreath Vt. Bowl - Possibly 1 of 2 Known
- _____ 38. A - Mlbg. 10" ICS Blackberry Wreath Bowl - Radium Beauty
- _____ 39. A - Mlbg. 7-1/4" Tri-Corner Blackberry Wreath Bowl - Radium Rarity
- _____ 40. M - Mlbg. 5-1/2" Grape Wreath Tight Crimp Bowl w/Clover & Feather Center
- _____ 41. M - Mlbg. 6", 6 Ruffle Blackberry Wreath Bowl - Satin Finish
- _____ 42. A - Mlbg. 6-1/2", 6 Ruffle Blackberry Wreath Radium Compote
- _____ 43. A - Mlbg. 9-1/2", Square Blackberry Wreath Bowl - Awesome!
- 700 44. A - Mlbg. 6-1/8" Peacock Plate - Great Irid.
- _____ 45. A - Mlbg. Hobnail Swirl Cuspidor
- _____ 46. A - Mlbg. Hobnail Rosebowl - Colorful
- 550 47. M - Mlbg. Seacoast Pin Tray
- _____ 48. M - Mlbg. Leaf and Little Flowers 6-Ruffle Round Compote - Radium
- 4500 49. P - Mlbg. 6", 6 Ruffle Peacock Tail Vt. Compote
- _____ 50. B - Mlbg. 10", 3 in 1 Edge, Primrose Bowl - Possibly One Of A Kind
- 875 51. B - Mlbg. 10-1/4", 6 Ruffle Many Stars Bowl w/6 Point Center - Flawed Edge
- 900 52. G - Mlbg. 9-3/4", CRE, Square Nesting Swan Bowl - Few Known
- _____ 53. Radium G - Mlbg. 9-3/4", 6 Ruffle Nesting Swan Bowl
- _____ 54. A - Mlbg. 9-1/2", 6 Ruffle Whirling Leaves Bowl - Radium Deluxe
- _____ 55. Dark Radium M - Mlbg. 8" ICS Holly Whirl Bowl w/Multi-Star Center
- _____ 56. Emerald G - Mlbg. 6-1/2" Holly Sprig ICS Bowl
- _____ 57. M - Mlbg. 7-1/2", Deep Round, Flared Holly Whirl Bowl w/Multi-Star Center
- _____ 58. M - Mlbg. 6-3/4" Tri-Corner Holly Spring Bowl
- _____ 59. M - Mlbg. 6-1/2" CRE Holly Sprig Bowl w/Feathered Leaf Center - Most Unusual
- 875 60. Vas. - Mlbg. 6-1/2" 3 in 1 Holly Sprig Bowl - Few Known
- _____ 61. P - Imp. 9", 8 Ruffle Star Of David Bowl - Electric
- _____ 62. Soft P - Imp. 9", Ruffled Cobblestone Bowl
- _____ 63. G - Imp. 12" Square Octagon Centerpiece Bowl - First Reported
- 500 64. Smoke - Imp. 9-1/4" Flat Shell Plate - Loaded with Pastels
- _____ 65. M - Imp. Homestead Chop Plate - Signed Nuart - Extra Nice
- _____ 66. Smoke - Imp. 10-1/2" Chrysanthemum Chop Plate - Stretchy and Unusual
- 3500 67. Amber - Imp. 10-1/4" Hattie Chop Plate - Multi Electric
- _____ 68. G - Fenton 9-1/4" Captive Rose Plate - Gold and Silver
- _____ 69. M - Fenton 9-1/4" Captive Rose Plate - Pink Hilites
- _____ 70. B - Fenton 9-1/4" Captive Rose Plate - Purples and Golds
- _____ 71. PO - Fenton 7-1/2", Spat Ftd., Peacock and Grape Bowl - Neat Pastel
- _____ 72. PO - Fenton 8", Spat. Ftd., Dragon and Lotus Bowl
- _____ 73. Moonstone - Fenton 6 Ruffle Holly Hat - Great One!
- _____ 74. Moonstone - Fenton 6", Ruffled Banded Blackberry Spray Hat
- 950 75. AO - Fenton 8-1/4", CRE Vintage (Grape) Bowl - Tight Crimp
- _____ 76. Persian B - Fenton 9", 8 Ruffle Vintage (Grape) Bowl - Very Scarce
- _____ 77. B - Fenton 7-3/4" Leaf Chain Plate - Grape Ext. - Neat Size
- _____ 78. B - Fenton 9-1/4" Heart and Vine Plate - Top Of The Line
- _____ 79. M - Fenton 6-1/2", Flat Sailboats Plate - Orange Tree Ext.
- 750 80. B - Fenton 9-1/2" Orange Tree Flat Plate - Multi Electric
- _____ 81. M - Fenton 9-1/8" Plaid Plate - Slightly Flared
- 925 82. B - Fenton 9-3/8" Peacock at Urn Plate - Multi Electric
- _____ 83. B - Fenton 9-1/4" Low, 3 in 1 Edge Holly Bowl - Super
- _____ 84. M - Fenton 8-1/2", 3 in 1, Coral Bowl - Scarce Shape

- 2700 85. Fantastic M - 9" Rose Pinwheel Bowl - Color Galore
86. Red Amberina - 5-1/2", 2 Row, O.E. Ruffled Basket
87. Red Amberina - Fenton 6-1/4", 6 Ruffle Holly Hat
88. Red Amberina - Fenton 6-3/4", Ruffled 2-Row, O.E. Blackberry Basket
89. M - Fenton 9-1/2" Peacock and Grape Collar Base Plate
90. G - Fenton 9-1/2" Peacock and Grape Collar Base Plate - Possibly 1 of 3 Known
- 675 91. M - Diamond Points Rosebowl - First One I've Run Across
92. M Flash - Fostoria American Rosebowl - Ex. Britt Collection
93. Russet Stretch Slag - 6-1/2", Tri-Corner Bowl - Rib Ext. - Unique Piece
94. Tangerine Stretch - Dolphin Fan Vase - Few Known
95. G - Imp. Flute Toothpick Holder
96. M - Jacobean 5-1/2" Tall Perfume Bottle
97. Aqua - Fenton 5-3/4" Ball Ftd. Water Lily Berry Bowl
98. B - Fenton 6", 2 Row, O.E. Basket - 2 Sides Up
- 1500 99. Fantastic M - Fenton 9" Peacock Tail Plate
- 6000 100. Ultra Rare M - Fenton 10-1/2" Peacock Tail Chop Plate - Only One Reported
- 825 101. Rich M - Fenton 6-1/2" Peacock Tail Plate
- 1100 102. A - Fenton 9", 16 Low Ruffles, Peacock Tail Bowl/Plate? - Most Unusual
103. Pastel Lime G - Dugan Coin Spot Compote - 8 Ruffles - First Time Offered
104. Honey Amber - U.S. Glass Cosmos and Cane 6-1/2" Tall Stemmed Compote
105. P - Cambridge 9-1/2" Lg. Flared Inverted Strawberry Compote - Superb
- 600 106. Ice B - N Hearts and Flowers Compote
- 725 107. Ice G - N Hearts and Flowers Compote
- 1600 108. Green - N Hearts and Flowers Compote
- 500 109. B - N Hearts and Flowers Compote
110. P - N Hearts and Flowers Compote
111. M - N Ruffled Blossomtime Compote
112. P - N Ruffled Blossomtime Compote
113. Pumpkin M - N Stippled Harvest Poppy Compote
114. P - N Blackberry and Ray Ruffled Compote
115. P - Mlbg. 6", Ruffled Flute Compote - Sgnd. Krys-Tol - Rare - Only One Known
116. P - Mlbg. 5-3/4" Tall, 6 Ruffle Rosalind Compote
117. G - Mlbg. 5-3/4" Tall, 6 Ruffle Rosalind Compote
118. G - Mlbg. Radium Poppy Lg. Compote - Flared Nicely
- 1425 119. A - Mlbg. Hanging Cherries Large Compote
- 1225 120. A - Mlbg. Square Deep Grape Compote
- 900 121. M - Mlbg. Roses and Fruit Stemmed Bonbon
- 1000 122. G - Mlbg. Giant Peacock at Urn Ruffled Compote
- 650 123. P - N Grape and Cable 7 pc. Water Set
- 1000 124. G - N Singing Birds 7 pc. Water Set
125. B - Floral and Grape Vt. 7 pc. Water Set
- 675 126. G - Giant 9-3/8" Tall Venetian Vase (Large Rosebowl)
- 800 127. A - Fenton Paneled Dandelion Tankard Water Pitcher
128. Frosty W - Fenton Lattice and Grape Tankard Water Pitcher
129. Frosty W - Fenton Lattice and Grape Tumbler
- 2100 130. Ice B - N Grape Arbor Tankard Water Pitcher
131. Ice B - N Grape Arbor Tumbler
132. M Flash - Lemonade Tankard and Six Glasses - Blue Base & Handle - Totally Rare
- 675 133. Pumpkin M - Dugan Jeweled Heart Water Pitcher - Splendid Example
134. Enameled Swallow Lemonade Glass
135. M Flash - Etched, Enamel Decorated Tumbler - Unknown Pattern
136. B - Imp. Fieldflower Tumbler
137. P - Quill Tumbler
138. Green - N Peacock at Fountain Tumbler
139. M - 5-3/4" Buzz Saw and File Tumbler
140. Rich M - N Singing Birds Tumbler
141. A - Dugan Beaded Shell Mug
142. RED - Fenton Orange Tree Shaving Mug
143. Rare B - Stork in the Rushes Mug
- 675 144. Ice G - N Dandelion Knights Templar Mug
145. Scarce Ice G - N 9-1/4" Grape and Cable Spat. Ftd. Plate - Meander Ext.
146. AO - N Poinsettia and Lattice Ruffled, Ftd. Bowl - Lots of Blues
147. G - N 8-3/4" PCE Grape and Cable Bowl - BW Ext. - Emerald Highlights
148. Sapphire - N 9", Collar Base, Stippled, Ruffled Three Fruits Bowl - Rim Flaw
- 575 149. P - N 10", PCE Wishbone Bowl - BW Ext. - Electric Galore
- 525 150. B - Grape and Cable 11" Ftd., Flared Top Fruit Bowl - Rare Shape and Color
- 950 151. Rare B - N PCE Embroidered Mums Bowl - Rayed Ext. - Possibly 1 of 2
152. M - Mlbg. Trout and Fly 3 in 1 Edge Bowl - Pinks and Blues
153. G - Mlbg. Trout and Fly 3 in 1 Edge Bowl - Deluxe Satin
154. A - Mlbg. Trout and Fly 6 Ruffle Bowl - Purples and Blues
155. G - Mlbg. Trout and Fly 6 Ruffle Bowl - Fish Has Lots of Irid.
156. G - Mlbg. Trout and Fly ICS Bowl - Scarce Shape
- 775 157. Rare A - Mlbg. Diamond/Square Shape Trout and Fly Bowl
- 725 158. Rare M - Mlbg. Diamond/Square Shape Trout and Fly Bowl

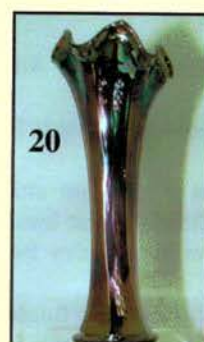
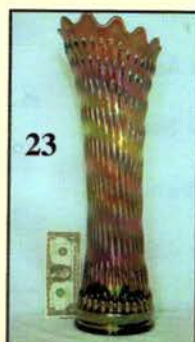
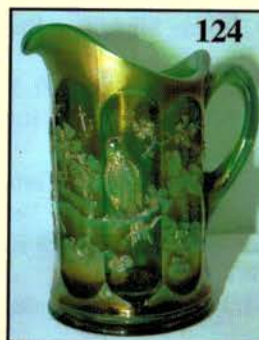
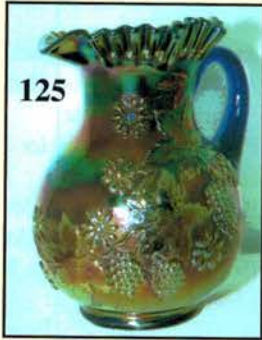
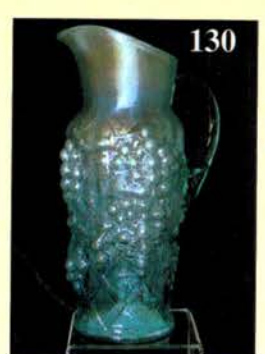
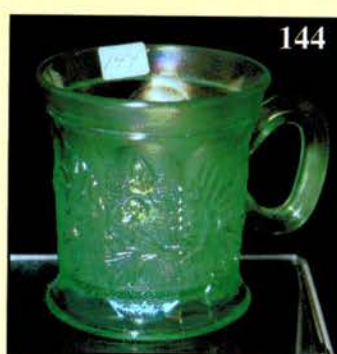




- _____ 159. Radium A - Mlbg. 10", Flared, 6 Ruffle Peacocks Bowl - Rim Chip
- _____ 160. G - Mlbg. Peacock at Urn 3 in 1 Edge 10-1/2" Bowl - Loaded with Radium Color
- _____ 161. M - Mlbg. Peacock 9-3/4", 6 Ruffle Bowl - Radium Pastels
- 425 162. P - Mlbg. Peacock 9", ICS Bowl - Unbelievable Color - Rim Chip Under Marie
- _____ 163. G - Mlbg. 7-1/4", 3 in 1 Peacock at Urn Shotgun Bowl
- _____ 164. Rare M - Mlbg. 7-1/2", 6 Ruffle Peacock at Urn Shotgun Bowl - Got One?
- _____ 165. Yellowish Pastel M - Mlbg. 8-3/4", ICS Little Stars Bowl - Rare Size
- _____ 166. Radium M - Mlbg. 8-1/2", ICS Little Stars Bowl - A Gem!
- _____ 167. Radium A - Mlbg. 9-3/8", ICS Many Stars Bowl - Five Point Star Center
- _____ 168. Yellowish Pastel M - Mlbg. 8-3/4", 3 in 1 Little Stars Bowl - Lots of Blues
- _____ 169. A - Mlbg. 10", 6 Ruffle Many Stars Bowl - Six Point Star In Center
- _____ 170. G - Mlbg. 8", 6 Ruffle Little Stars Bowl - Neat Size
- 525 171. G - Mlbg. Tracery 6" Square Bonbon - This One Is Nice!
- 925 172. M - Mlbg. Night Stars Bonbon - Super Little Rarity
- 1500 173. M - Mlbg. 5-1/2", ICS Rosalind Bowl - One Of A Kind?
- 2900 174. PO - Dugan 7-1/4", CRE Honeycomb Plate
- 1625 175. Outstanding P - Dugan 6 Ruffle Farmyard Bowl - Electric Poultry
- _____ 176. P - Dugan 9" Apple Blossom Twigs Plate - Slightly Flared
- _____ 177. PO - Dugan 8-1/2" Apple Blossom Twigs Plate - Slightly Flared
- _____ 178. PO - Dugan Fishnet Single Epergne
- _____ 179. Rare PO - Dugan 8-3/4" Flat Roundup Plate - Seldom Seen
- 625 180. Dugan Blue - 8-1/2" Roundup Plate
- _____ 181. PO - Dugan 11-1/2", 8 Ruffle Heavy Web Bowl - Grape and Leaf Ext. - Outstanding
- _____ 182. PO - Dugan 10-3/4" Four Flowers Flat Chop Plate - Plain Ext. - Superb Radium
- 500 183. P - Dugan 8-1/2", CRE, Tri-Corner Ftd. Cherries Bowl - Pattern Inside and Out
- _____ 184. P - Dugan 7-1/2", Deep 10 Ruffle Ski Star and Compass Nut Bowl - Very Unusual
- _____ 185. PO - Dugan 6-1/2" Pinched Swirl Vase - At Last, A Pretty One - Art Glass Finish
- _____ 186. PO - Dugan Pinched Swirl Tri Corner Spittoon Shape
- _____ 187. PO - Dugan Squatty 3-3/4" Lattice and Points Vase - 5-1/4" Lg. Ruffled Opening
- _____ 188. P - Dugan Daisy Web 5-1/4", 6 Ruffle Basket - Seldom Offered
- _____ 189. Dugan Blue - 8-1/2", Low 10 Ruffle Fanciful Bowl
- 1025 190. Dugan Blue - 8-3/4" Fanciful Plate - Flat!
- _____ 191. P - Dugan 12" Square Butterfly and Tulip Ftd. Fruit Bowl - Always In Demand
- _____ 192. M - 8-3/4", Low 6 Ruffle Bowl - Unlisted Pattern - First Time Offered
- 3000 193. P - Dugan Large Christmas Compote - Fantastic Christmas In April!
- _____ 194. P - Dugan 6-1/2", CRE Smooth Rays Plate
- _____ 195. Fantastic W - Dugan 9-1/4" Lined Lattice Vase
- _____ 196. P - Dugan 8-1/4" Lined Lattice Vase
- _____ 197. PO - Dugan 10-3/4" Target Vase - Loaded with Opal
- _____ 198. PO - Dugan 5-3/4" Wide Rib Vase - Pinched In Cuspidor Top
- _____ 199. PO - Dugan 4-1/2" Squatty Wide Rib Vase - 3-3/4" Base, 6-1/2" Flared Top
- _____ 200. Awesome W - Dugan 12-7/8" Persian Garden Chop Plate - White at Its Best
- 200 201. B - N Three Fruits 8-3/4" Stippled, Ruffled Collar Base Bowl
- _____ 202. M - N Three Fruits 8-3/4" Ruffled Bowl - BW Ext.
- _____ 203. G - N 9-1/4" Three Fruits Plate - BW Ext. - Interior Die Runs
- _____ 204. Scarce G - N Stippled Three Fruits Ruffled Bowl, Collar Base
- _____ 205. P - N Three Fruits Medallion 8-3/4" Spat. Ftd., Ruffled Bowl - Electric
- 525 206. Pastel AO - N Stippled Three Fruits Medallion Spat. Ftd., Ruffled Bowl
- 800 207. B - N 9" Stippled Three Fruits Plate - A Dandy
- _____ 208. Rare Pearlized Custard - Stippled Three Fruits Ruffled Bowl, Collar Base
- _____ 209. P - N Petals 7-1/2" Ruffled Compote - Top Notch!
- _____ 210. A - N 9" Strawberry Plate - BW Ext. - Great Example
- 2500 211. Ultra Rare N PO - Strawberry 8-3/4" Ruffled Bowl - BW Ext. - A Winner!
- _____ 212. M with Opal Tips - N 9-1/2", Ruffled Stippled Rays Bowl
- _____ 213. Ice G - N Ruffled Hearts and Flowers Bowl - Rib Ext.
- 600 214. P - N 9" Hearts and Flowers Plate - Very Pretty
- 650 215. Pastel M - N 9" Hearts and Flowers Plate - Pinks and Blues
- _____ 216. Pumpkin M - N PCE, Stippled Three Fruits Bowl - Rib Ext.
- 750 217. Soft B - N 9" Stippled Good Luck Plate - Rib Ext. - Thin Base
- _____ 218. A - N Good Luck Vt. Plate - BW Ext.
- _____ 219. M - N Good Luck Vt. Plate - BW Ext.
- 1300 220. AO - N Ruffled Good Luck Bowl - Rib Ext.
- _____ 221. M - N PCE Good Luck Bowl - Rib Ext. - Hot Pinks
- 2700 222. M - N 9" Ruffled Good Luck Prototype Bowl - Retooled from Jockey Club Mold

probably not

223. M - Dugan 8-1/4", 10 Ruffle Brooklyn Bridge Bowl
224. B - 7-1/2", 1914 Elks Parkersburg Plate - V.L. Wear
225. M - 9-1/2" Spectors Department Store Adv. Plate
226. PO - Fenton 8-1/4", 3 in 1 Dragon and Lotus Collar Base Bowl
227. Moonstone - Fenton 7-1/4", ICS Grape and Cable Bowl - Fabulous Piece
228. Red Slag - Fenton Acorn 6-1/2" Deep, Flared Bowl
229. Brick Red - Fenton 7-3/4", 8 Ruffle Acorn Bowl
- 625 230. Red - Fenton Persian Medallion Bonbon - Great Example
231. Red - Fenton Lotus and Grape Vt. Bonbon
232. M - Fenton 7-3/4" Acorn 8 Ruffle Bowl - Lavender Opal Edge!
- 900 233. Lav. Opal - Fenton 6-1/2" Vintage (Grape) Round, Flared, Scalloped Bowl - Very Rare
- 825 234. Amethyst Opal - Fenton 8-3/4", 8 Ruffle Dragon and Lotus Bowl, Collar Base
- 800 235. B - Fenton 9-1/4" Dragon and Lotus Plate - Few Known
236. A - Fenton 9-3/8" Holly Plate - Well Above Average
- 575 237. Very Scarce G - Fenton 9-1/4" Autumn Acorns Plate
- 500 238. B - Fenton 9" Lotus and Grape Plate - Scarce Color
- 550 239. Pastel M - Fenton 9" Dragon and Strawberry ICS, Collar Base Bowl - Great Irid.!
240. Vas. Opal - Fenton Strawberry Bonbon - Little Beauty
241. Rich G - Fenton Strawberry Bonbon - Covered with Irid.
242. Red Amberina - Fenton Strawberry Bonbon
243. Custard - Fenton Prayer Rug Bonbon w/M. Overlay
244. Red Amberina - Fenton Stippled Rays 6-1/2", 6 Ruffle Bowl - Scale Band Ext.
- 1300 245. Dark M - Fenton Peter Rabbit 9" Ruffled Bowl - Always In Season!
246. M - Mlbg. 10-1/4", 3 in 1 Edge Seaweed Bowl - Loads of Color
- 575 247. G - Mlbg. 6", 6 Ruffle Seaweed Berry Bowl - First I've Seen - Unlisted Item
- 1275 248. G - Mlbg. 9" Seaweed Plate - Need I Say More?
- 950 249. A - Mlbg. 7-1/4" ICS Courthouse Bowl - Radium Classic
250. G - Mlbg. 9" ICS Primrose Bowl - Again, WOW!
251. Electric Radium M - Mlbg. 9-3/4" Round, Scalloped Fleur De Lis Bowl - Collar Base
- 800 252. P - Mlbg. 9" SQUARE, CRE Zig Zag Bowl - Fantastic Radium
- 4600 253. Emerald G - Mlbg. 9-1/4", 8 Ruffle Grape Leaves Bowl - Unique Radium Beauty
- 775 254. A - Mlbg. 9-3/4", 3 in 1 Edge Grape Leaves Bowl - As Good As They Get
- 650 255. Clambroth - Mlbg. 9-3/4", 3 in 1 Edge Grape Leaves Bowl - Once You Buy It You Can Call It Whatever Color You Want!
- 1025 256. M - Mlbg. 10" Round, Flared Scalloped Vintage Hobnail Bowl - Truly A Rarity
- 6200 257. Cobalt B - 12", 8 Ruffle Floral Enamel Dec. Aurora Pearls Brides Bowl - AWESOME!
258. M - N Peacocks Plate - Rib Ext.
259. Ice G - N Peacocks Plate - Smooth Ext. - Lots Of Blues
260. W - N Peacocks Plate - Smooth Ext.
- 1600 261. B - N Peacocks Stippled Plate - Rib Ext., Thin Base
- 575 262. Rare Ice G - N Peacocks Ruffled Bowl - Rib Ext.
- 1350 263. AO - N Peacocks Ruffled Bowl - Rib Ext. - Always A Favorite
264. P - N PCE Peacocks Bowl - Rib Ext. - Multi Electric
265. B - N PCE Stippled Peacocks Bowl - Rib Ext.
- 800 266. Renninger B - Peacocks PCE Bowl - Rib Ext.
267. Deep B - N Peacocks Ruffled Bowl - Rib Ext. - Electric Colors
- 925 268. RARE Smoke - N Peacocks Ruffled Bowl - Rib Ext. - Yes, It Is Smoke
- 2800 269. Horehound - N Peacocks Plate - Rib Ext. - Colorful
- 2000 270. Horehound - N Good Luck Plate - BW Ext. - One Of The Best!
- 825 271. Horehound - N PCE Stippled Strawberry Bowl - BW Ext. - Could Be Honey Amber/ - Super Rare
- 750 272. Horehound - N Embroidered Mums 8-3/4", Ruffled Bowl - Seldom Offered
273. AO - N Lead Beads Rosebowl - Outstanding Example
- 925 274. Elect. B - N Peacocks Plate - Rib Ext.
- 1700 275. Ice G - N Poppy Show Ruffled Bowl - Fantastic Piece
276. M - N PCE Hearts and Flowers Bowl - Scarce Shape
- 525 277. B - N Embroidered Mums Ruffled Bowl - Multi Electric Hues
278. Lime Ice G - N Dome Base, Ruffled Three Fruits Medallion Bowl - BW & Grape Ext.
- 1600 279. Fantastic Lime Ice G - N Stippled, Ruffled Strawberry Bowl - Rib Ext.
280. Ice G - N Fruits and Flowers 9-3/4", 8 Ruffle Bowl - BW Ext.
- 500 281. M - N Greek Key 9-1/4" Flat Plate - BW Ext. - Beautiful and Detailed
- 900 282. M - N Wishbone 8-1/2" Ftd. Plate - Dark and Nice
- 1700 283. Dark Ice B - N Ruffled, Ftd. Wishbone Bowl - Exceptional Color
284. M - N Poppy Show Ruffled Bowl - Loaded with Pinks
- 8785 285. Lovely B - N Poppy Show Plate - Neat, Colorful Pattern
286. A - N Grape and Cable Pin Tray



287. A - N Grape and Cable Candlelamp - Complete - Normal Nicks on Shade
288. M - N Grape and Cable Candlelamp - Complete - Normal Nicks on Shade
289. G - N Grape and Cable Hatpin Holder - Sm. Nick On One Ft.
290. P - N Grape and Cable Hatpin Holder - Multi Electric
- 650 291. Rare M - N Grape and Cable Fernery Bowl - Lots of Color
- 1100 292. Rare G - N Grape and Cable Open, Ruffled Large Compote
293. M - Imp. Corn Bottle w/Shaker Top - Complete - Super Neat
294. G - Imp. Corn Bottle w/Shaker Top - Complete
- 4400 295. Purple - 7-1/4" Tomahawk Novelty - Beautiful, Second Known In Purple
296. Rarely Seen B - C & R Argentina Ashtray - So Different!
- 850 297. P - Imp. Iron Cross Mark Paperweight - Also Signed Nuart - Find Another
298. P - Flute 4-3/8" Round Super Electric Berry Bowl
- 600 299. M - N 9-3/8" Rose Show Plate - Great Example
- 2500 300. Incredible A - N 9-3/8" Rose Show Plate - WOW!
301. Super Pastel Ice G - N Ruffled Rose Show Bowl
302. P - N Ruffled Rose Show Bowl
303. B - Fenton 6-1/2" Squatty April Showers Vase
304. B - Fenton 11" April Showers Vase
305. M - Imp. 10-3/4" JIP Morning Glory Vase
306. M - Imp. 7-1/2" JIP Curled Rib Vase
307. P - Imp. Ripple 12-1/4" Vase
308. Amber - Imp. Ripple 11" Vase
309. G - Imp. Riffle 9" Vase
310. M - Dugan 11" Target Vase
311. Sapphire - Fenton 11-1/2" Fine Rib Vase
312. A - Westmoreland 9-1/2" Concave Flute Vase - Radium
313. Rare Amber - Fenton 10" Knotted Beads Vase - CRE Top
314. G - Fenton 7" Squatty Diamond and Rib Vase - Extra Nice
315. G - N Thin Rib 7-1/2" Squatty Vase
316. P - N Thin Rib Vt. 6-1/2" Squatty Vase - Starred Base
317. Sapphire B - N #657, 8-1/2" Candlesticks - Pr.
318. Celeste B - N #657, 8-1/2" Candlesticks - Pr.
319. Russet - N #657, 8-1/2" Candlesticks - Pr.
320. Smoke - Imp. Delta Base 9" Candlesticks - Pr.
321. MMG - Imp. #700, 7-1/2" Tall Candlesticks - Pr.
322. M - 7" Tall, 6 Sided Base (Intaglio Etched Grapes) Candlesticks - Pr.
323. M - Fenton 6", 2 Row, O.E. Basket w/Miller Furniture Adv. In Bottom
324. B - Fenton Holly Goblet Shape Compote
325. M - Cambridge Inverted Feather Parfait
326. M - Curved Star Open Sugar Bowl - Headdress Int.
327. M - Towers 3" Tall Vase
328. B - Fenton 11-3/4" Knotted Beads Vase
329. G - N 7" Squatty Tree Trunk Vt. Vase - Alaskan Effect
330. BO - Westmoreland 9" Corinth Vase

SPECIAL NOTE:

NO SUNDAY CALLS, PLEASE!
 Winning Absentee Bidders will be contacted Monday through Wednesday of the week following the Auction!

Thank You!

2003 CALENDAR

May 24, 2003

CARNIVAL GLASS AUCTION
 ILLINOIS COLLECTOR

DAVE AND REVA DRABING
 at Boonville, Mo. Auction Gallery

June 21, 2003

CARNIVAL GLASS COLLECTION
 at Boonville, Mo. Auction Gallery

September 13, 2003

CARNIVAL GLASS COLLECTION
 at Boonville, Mo. Auction Gallery

October 17-18, 2003

AIR CAPITAL CARNIVAL GLASS CONVENTION
 at Wichita, Kansas

For Free Color Catalogs & Information Write:
 Mickey Reichel

516 Third Street, Boonville, MO 65233-1536
 or Call: 660-882-5292 days or
 660-882-5283 evenings
 E-mail: mreichel@undata.com

NEED QUALITY CARNIVAL GLASS

*"We don't want all the Business,
 Just Yours."*

WE DO AUCTIONS RIGHT!!

MICKEY REICHEL
ANTIQUE & AUCTION, L.C.
516 THIRD STREET
BOONVILLE, MO 65233-1536

PRESORTED
FIRST CLASS MAIL
US POSTAGE PAID
SEDALIA, MO
PERMIT 217

RETURN SERVICE REQUESTED

FIRST CLASS MAIL
SPECIAL INVITATION TO:



14*1*****ALL FOR ADC 460

LEE MARKLEY
PO BOX 306
MENTONE, IN 46539-0306

