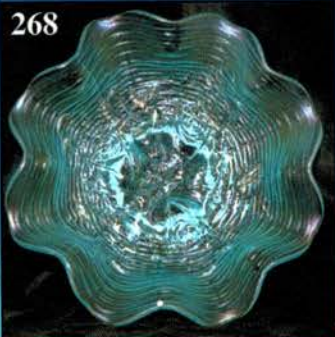


# CARNIVAL GLASS AUCTION

Saturday, March 15, 2003 9:00 a.m.

★ Collection of Variety and Color ★

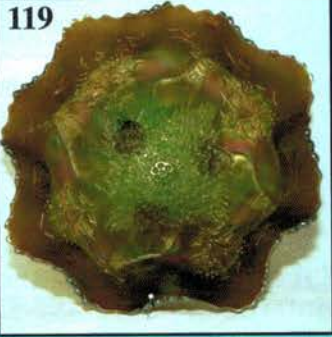
268



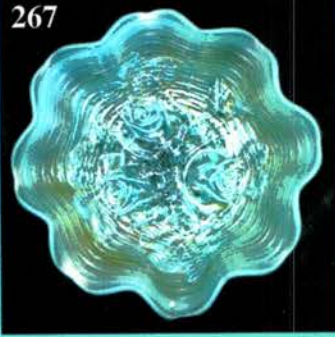
50



119



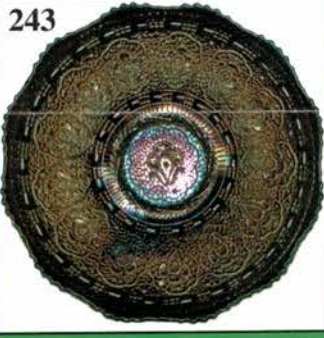
267



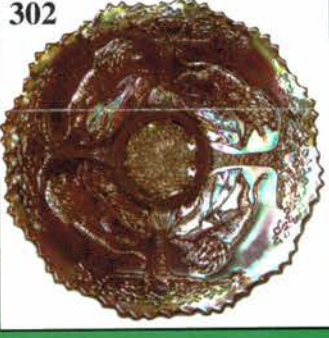
123



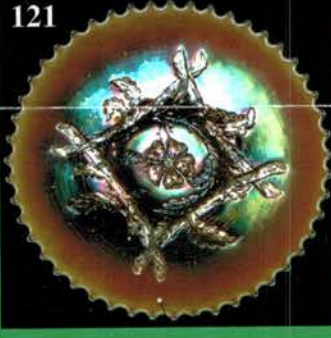
243



302



121



312



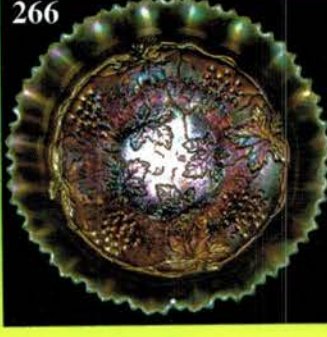
304



86



266



Held By the Mickey Reichel Antique & Auction L.C.

Office: 660-882-5292 • Home: 660-882-5283

WEB SITE: <http://www.yourauctionpage.com/reichel>

E-mail: [mreichel@undata.com](mailto:mreichel@undata.com)

# Held Inside the Mickey Reichel Auction Center

1 Mile North of I-70 on Hwy. 5, Exit 101, Boonville, Missouri • 20 Miles West of Columbia, MO on I-70

Preview Friday 12 p.m. - 5 p.m. and 7:30 a.m. - 9:00 a.m. Day of Auction



**TERMS:** Cash or Good Check, VISA and MasterCard accepted.



3% Clerking Fee on all purchases except for payment of cash or check. Proper I.D. required.

**WEB SITE:** [www.yourauctionpage.com/reichel](http://www.yourauctionpage.com/reichel)

## ABSENTEE BID POLICY:

**WRITE IN BIDS:** If you are unable to attend the auction, we will be happy to accept absentee bids which must be received by THURSDAY, MARCH 13, 2003. Don't Delay. E-Mail: [mreichel@undata.com](mailto:mreichel@undata.com)

**FOR AUCTION PRICE RESULTS:** Send \$3.00 and Large S.A.S.E. to 516 Third Street, Boonville, MO 65233-1536

**PLEASE NOTE:** There is a **\$5 handling charge for each successful bid which will be added to the selling price** for all write-in bids. This is in addition to the cost of postage, insurance and packing. Your write-in bid will be entered just as if you are present and bidding. **Successful bidders will be notified in 1 to 3 days by the auctioneer (so be sure to include your phone number).** Direct mail bids to Auctioneer **Mickey Reichel, 516 Third Street, Boonville, MO 65233-1536.** Terms: Cash or Check accepted with proper I.D. and Social Security Number and References. Announcements made day of the auction supercede all printed material. Not Responsible for Accidents or Sold Items.

**No return on any items once they leave the Auction Center (No Exceptions).\*\*\*\***

**Call for additional information: 660-882-5292 days or 660-882-5283 evenings before 9:00 p.m.**

**FAX: 660-882-5292 (evening hours start FAX transmission after beep)**

**MAIL BIDS:** Items are bid on in perfect condition with average or above iridescence OR as listed in the brochures. Bids will not be carried out when damage on an item has been found during the auction.

**PEOPLE PRESENT AT AUCTION ARE RESPONSIBLE FOR FINDING ANY PINHEADS, WEAR, SPOTTINESS, MANUFACTURER'S DEFECTS OR ANY OTHER MINOR FLAWS, ETC. \*\*\*\*\***

**NOTE: Read each line, as we have accentuated the type of no particular piece, all are special.**

**Make Reservations EARLY at one of these local motels:**

Days Inn: 660-882-8624 • Comfort Inn: 660-882-5317 • Super 8: 660-882-2900 • Holiday Inn: 660-882-6882

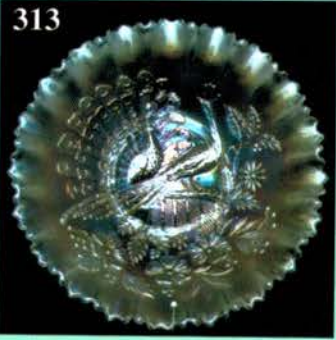
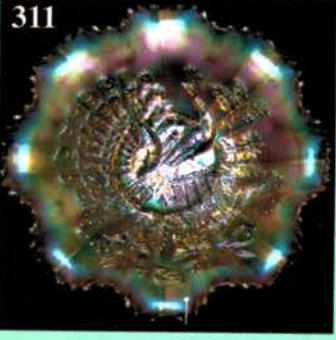
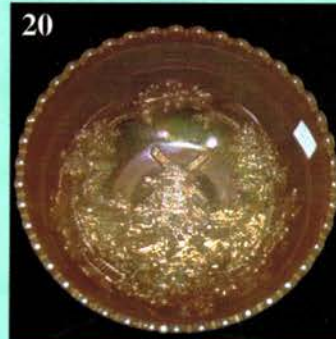
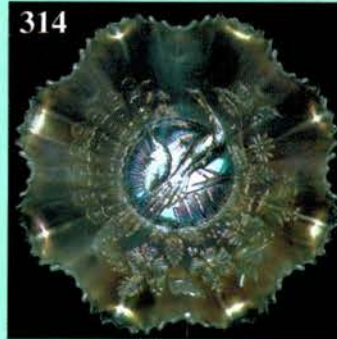
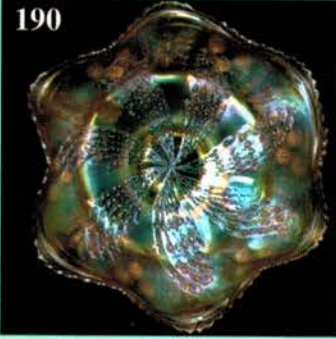
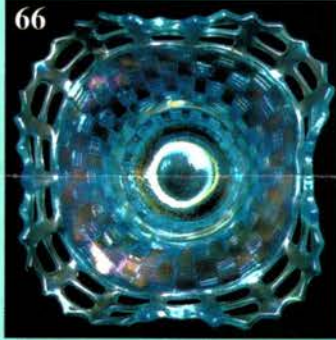
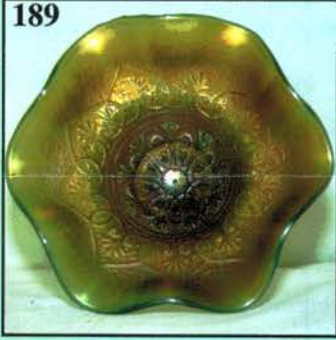
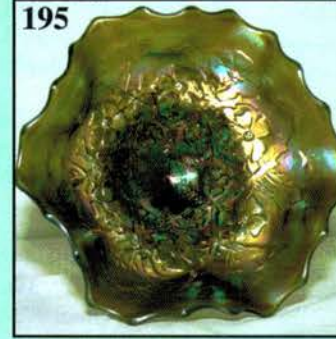
## **Auction Consists of Rarity, Great Irid. and Variety**

### **THANK YOU FOR ATTENDING TODAY**

1. M - Fenton 6-1/4" Ribbed Fan Vase
2. M - Imp. 9-3/4" Swung Ripple Vase
3. M - Fenton Diamond and Rib 7" Squatty Vase
4. A - Fenton Diamond and Rib 10-1/2" Vase
5. B - Knotted Beads 10-1/2" Vase
6. M - Westmoreland 10" JIP Corinth Vase - Radium Beauty
7. M - Imp. Beaded Bullseye 9-1/4" Vase
8. M - Imp. Beaded Bullseye 11-1/2" Vase - Radium - Choice A or B
9. M - Imp. Curled Rib 11-1/4" Vase - Clear Base
10. Elec. P - Imp. Ripple 13-1/2" Mid-Size Vase - 4" Base, 5-3/4" Flared Top
11. M - Imp. Ripple 16" Mid-Size Vase - 4" Base, 5" Opening
12. P - N 6-3/4" Squatty Fine Rib Vase - 5" Opening

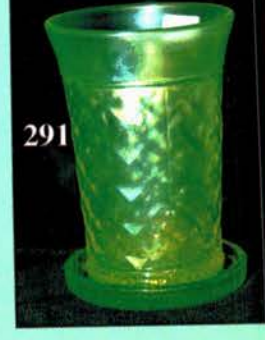
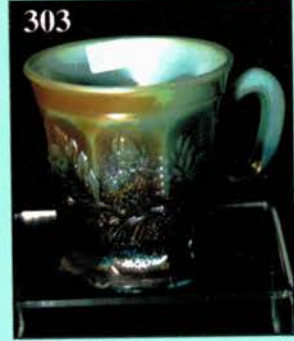
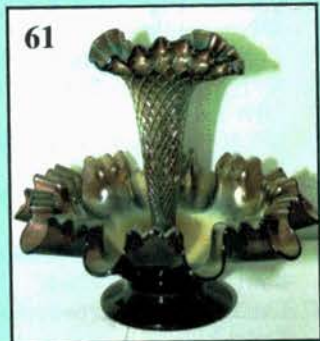
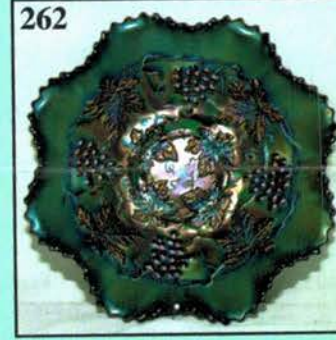
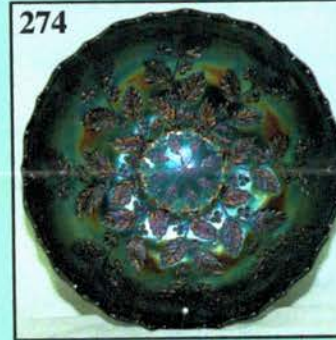
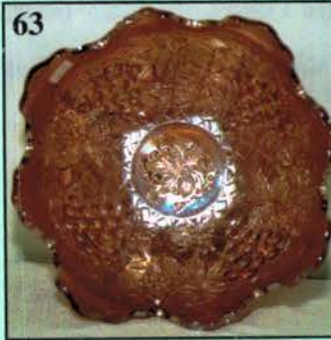
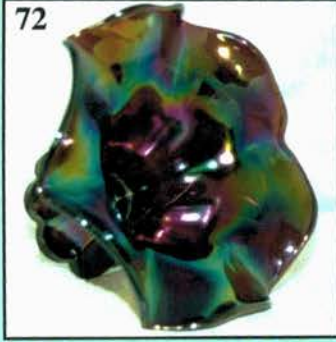
13. P - N 9" Feathers Vase
14. Olive G - N 10-3/4" Four Pillars Vase - Rib Int. - Lots of Pinks
15. Olive G - N 10-3/4" Thin Rib Vase - Very Pretty
16. A - Dugan Beauty Bud Vases, 7-1/2" Tall - Choice A or B
17. P - Imp. 5-1/2", 6 Ruffle Diamond Ring Bowl - Good Color
18. M - Imp. 5-1/2" Windmill Bowl
19. M - Imp. 9" Octagon Scalloped, Flared Bowl
20. Rare Imp. Moonstone - 7", Rd. Windmill Bowl - Few Known
21. Green - Imp. 9", 8 Ruffle Hattie Bowl - Scarce In Green and Nice Irid.
22. P - Imp. 9", 8 Ruffle Pansy Bowl - Multi Electric
23. P - Imp. 7-1/2", 8 Ruffle Scroll Embossed Bowl - Plain Ext. - Superb!
24. Clambroth - Imp. Lustre Rose 11" Flared Centerpiece Bowl - Plain Interior - Super Irid.

- \_\_\_\_\_ 25. Rich M - Imp. Lustre Rose 10-1/2" Rd., Ftd. Centerpiece Bowl - Pattern Inside and Out
- \_\_\_\_\_ 26. Amber - Imp. Lustre Rose Fernery Bowl - Scarce Color
- \_\_\_\_\_ 27. M - Imp. Lustre Rose Butter Dish w/Lid - Dark and Beautiful
- \_\_\_\_\_ 28. M - Imp. Lustre Rose Spooner
- \_\_\_\_\_ 29. M - Imp. Lustre Rose Creamer - Dark and Pretty
- \_\_\_\_\_ 30. Radium M - Imp. Fieldflower Tumblers 2 x \$
- \_\_\_\_\_ 31. G - Westmoreland Shell and Jewel Creamer and Sugar
- \_\_\_\_\_ 32. M - Fenton Butterfly and Berry Spooner - Very Nice Example
- \_\_\_\_\_ 33. P - Dugan Maple Leaf Butter Dish w/Lid
- \_\_\_\_\_ 34. P - Dugan Maple Leaf Spooner
- \_\_\_\_\_ 35. P - Dugan Maple Leaf Sugar w/Lid - Minor Lid Roughness
- \_\_\_\_\_ 36. Deep P - Dugan Dahlia Spooner
- \_\_\_\_\_ 37. Deep P - Dugan Dahlia Creamer
- \_\_\_\_\_ 38. Deep P - Dugan Dahlia Sugar Bowl w/Lid - Lid has Chips
- \_\_\_\_\_ 39. P - N Grape and Cable Cream Pitcher
- \_\_\_\_\_ 40. P - N Grape and Cable Butter Dish w/Lid
- \_\_\_\_\_ 41. B - Fenton 9", 3 in 1 Holly Bowl
- \_\_\_\_\_ 42. Lav. - Fenton 9", 8 Ruffle Holly Bowl - Scarce Base Color
- \_\_\_\_\_ 43. BA - Fenton 9", 3 in 1 Holly Bowl - Rare Base Color
- \_\_\_\_\_ 44. B - Fenton 8", 3 in 1 Persian Medallion Bowl - Scarce Shape
- \_\_\_\_\_ 45. G - Fenton 8-1/4", 3 in 1 Autumn Acorns Bowl
- \_\_\_\_\_ 46. A - Fenton 8-1/4", 3 in 1 Ribbon Tie Bowl - Very Pretty
- \_\_\_\_\_ 47. G - Fenton 9", 6 Ruffle Captive Rose Bowl
- \_\_\_\_\_ 48. G - Fenton 8-1/4", TIGHT CRE Captive Rose Bowl - A Beauty
- \_\_\_\_\_ 49. Dark M - Fenton 8-3/4", 6 Ruffle Captive Rose Bowl - Also Nice
- \_\_\_\_\_ ★50. Fantastic Rarity! G - Fenton 9" Flat Thistle Plate - Loaded with Blues & Pinks (This Is It)
- \_\_\_\_\_ 51. Radium M - Imp. Smooth Rays 6 Ruffle Bowl - Attractive Item
- \_\_\_\_\_ 52. Clambroth - Imp. 9-1/4" Smooth Rays Plate - Beautiful, Affordable Piece!
- \_\_\_\_\_ 53. Pastel M - Imp. 9-1/4" Smooth Rays Plate - Fabulous Irid.
- \_\_\_\_\_ 54. Yellow Vas. - Fenton 5-3/4", Ftd. Water Lily Sauce - M. Overlay
- \_\_\_\_\_ 55. Rich G - Fenton 5-3/4", Ftd. Water Lily Sauce - Scarce One!
- \_\_\_\_\_ 56. P - Dugan 6", Eight Ruffle Cherries Bowl - Little Dandy
- \_\_\_\_\_ 57. Ice G. Vas. - Dugan Stretch 10 Ruffle Pony Bowl - Loaded with Blue Irid!
- \_\_\_\_\_ 58. Beautiful M - N 8", 8 Ruffle, Spat Ftd. Sunflower Bowl - Colorful
- \_\_\_\_\_ 59. M - N 8-3/4", 8 Ruffle Nippon Bowl - BW Ext.
- \_\_\_\_\_ 60. M - N PCE Three Fruits Bowl - BW Ext. - Extra Nice Example
- \_\_\_\_\_ 61. P - Dugan 3 in 1 Fishnet Epergne - Scarce and Nice
- \_\_\_\_\_ 62. M - Fenton Lg., Ftd. Orange Tree Orange Bowl
- \_\_\_\_\_ 63. Scarce M - Dugan Ftd. 9-1/4", Deep Grape Arbor Fruit Bowl - Not Easy to Find
- \_\_\_\_\_ 64. A - Dugan Stork and Rushes Punch Cup - Nice Find
- \_\_\_\_\_ 65. P - Westmoreland 8-1/2" Pearly Dots Plate
- \_\_\_\_\_ 66. Deep, Rich Ice B - Fenton 7-1/2" 2-Row, O.E. Square Basket - Fantastic Color
- \_\_\_\_\_ 67. W - Fenton Rustic 16" Swung, Mid-Size Vase - CRE Top, 4" Base - Lots of Color
- \_\_\_\_\_ 68. Russet - N 12" Thin Rib Vase - Pulled Flames On Top, Nice Effect
- \_\_\_\_\_ 69. Russet - N 10-1/2" Thin Rib Vase - Radium Irid.
- \_\_\_\_\_ 70. P - N Squatty 6-1/4" Leaf Columns Vase - 5-1/4" Opening - Stunning Irid.
- \_\_\_\_\_ 71. PO - Dugan Target 5-3/8" Squatty Vase - 3-3/4" Base, Fabulous 7-1/4" Flared Top
- \_\_\_\_\_ 72. Spectacular P - Imp. 4-3/4" Columbia Vase - 7-3/4" Super Opening - Electric Plus
- \_\_\_\_\_ 73. P - N Singing Birds Water Pitcher - Another Favorite!
- \_\_\_\_\_ 74. M - Dugan Wreathed Cherry Water Pitcher - Radium w/Pink Highlights
- \_\_\_\_\_ 75. M - N Intaglio Cherry and Cable 10" ICS Bowl
- \_\_\_\_\_ 76. M - N Peacock at Fountain 9-1/4" Master Berry Bowl - Dark and Rich
- \_\_\_\_\_ 77. G - N Greek Key and Scales Dome Ftd. Ruffled Bowl - Radium
- \_\_\_\_\_ 78. P - Dugan Cherries 8", 10 Ruffle, Ftd. Bowl - Multi Electric
- \_\_\_\_\_ 79. Scarce A - Fenton 9", 3 in 1 Holly Bowl - Uncommon Shape
- \_\_\_\_\_ 80. M - Fenton Holly 9" Plate - Nice Example
- \_\_\_\_\_ 81. M - Fenton 6" Persian Medallion Plate - Orange Tree Ext.
- \_\_\_\_\_ 82. M - Dugan 6-3/8" Flat Persian Garden Plate - Basketweave Ext.
- \_\_\_\_\_ 83. W - Dugan 6-5/8" Flat Persian Garden Plate - Basketweave Ext. - Super Pastel Irid.
- \_\_\_\_\_ 84. Pastel M - Dugan 7-1/8" Fishscale and Beads Flat Plate - Very Pretty, Near Clambroth
- \_\_\_\_\_ 85. M - Dugan 6-1/4", 8 Ruffle Fishscale and Beads Berry Bowl
- \_\_\_\_\_ 86. Fantastic Elec. P - Dugan Ski Star and Compass 11", 6 Ruffle Bowl - WOW!
- \_\_\_\_\_ 87. P - Dugan Ski Star and Compass 6", 8 Ruffle Bowl - Extra Nice Color
- \_\_\_\_\_ 88. PO - Dugan Ski Star and Compass 11", 6 Ruffle Bowl - 2-1/2" of Opal
- \_\_\_\_\_ 89. PO - Dugan Stippled Flower 7-1/2", 6 Ruffle Bowl - Full Opal Back
- \_\_\_\_\_ 90. P - Dugan Cherries 9", Ftd., 3 in 1 Crimp Bowl - Great Shape and Color
- \_\_\_\_\_ 91. BA - Dugan Wreathed Cherry 12-1/4" Banana Shape Bowl
- \_\_\_\_\_ 92. Scarce A - Dugan Question Marks Two Handled Stemmed Bonbon
- \_\_\_\_\_ 93. B - Dugan Cosmos Vt. 9-1/2" Flared Chop Plate - Couple Chips
- \_\_\_\_\_ 94. Scarce Dugan B - Grape Delight Ftd. Rosebowl
- \_\_\_\_\_ 95. BA - Grape Delight Ftd. Rosebowl - Also Scarce
- \_\_\_\_\_ 96. W - Dugan Constellation Compote - Frosty!
- \_\_\_\_\_ 97. W - Dugan Leaf Rays Nappy - Stretchy Pastels
- \_\_\_\_\_ 98. A - Dugan 9-1/2" Low, 10 Ruffle Apple Blossom Twigs Bowl/Plate?
- \_\_\_\_\_ 99. Scarce Dugan Blue - Fanciful 9-1/4", 3 in 1 Crimp Bowl/Plate?
- \_\_\_\_\_ 100. A - Dugan Round-Up 9" Plate - Seldom Offered
- \_\_\_\_\_ 101. M - Dugan Vintage (Grape) Powder Jar w/Lid - Way Above Average
- \_\_\_\_\_ 102. P - Dugan Fisherman's Mug - Silver, Pinks, Blues



103. Rich M - Dugan Beaded Basket - Better Example
104. Pumpkin M - Fenton 6" JIP 2 Row O.E. Basket
105. M - Fenton 6-1/4" 2 Sides Up Large 2 Row O.E. Basket
106. Lime Vas. - Fenton 5-3/4", 6 Ruffle Large 2 Row OE Basket
107. Powder B - Fenton 7" Blackberry 2 Row OE Basket - 2 Sides Up - Top Notch
108. Ice G Vas. - Fenton 5-1/4" ICS 2 Row, O.E. Bowl - BW Ext. - Glows - Unusual Size & Shape
109. P - N Acorn Burrs Master Berry and 5 Small Berry Bowls - Well Matched
110. P - N Singing Birds Master Berry and 4 Small Berry Bowls - Very Scarce!
111. M - N Singing Birds Sm. Berry Bowls - 4 Very Well Matched Bowls - 4 x \$
112. M - Fenton 9-1/2", 8 Ruffle, Ftd. Little Fishes Master Bowl - Great Multi Irid.
113. B - Fenton 9-1/4", 8 Ruffle, Ftd. Butterfly and Berry Master Bowl - Lg. Open Bubble on Foot
114. G - Fenton 9-1/2", Rd., Ftd. Butterfly and Berry Master Bowl
115. Dark M - Fenton 11", Sq. 8 Ruffle, Ftd. Chrysanthemum and Windmill Bowl - A Great One
116. PO - Dugan Ski Star and Compass 10-3/4", 6 Ruffle Bowl - Pastel Stretch Irid.
117. Scarce B - Fenton 9-1/2", ICS Little Flowers Master Bowl - Wonderful Find
118. M - Fenton Stag and Holly 11", Ftd., 8 Ruffle Bowl
119. RARE Green - Fenton Stag and Holly 11", Ftd., Square 8 Ruffle Bowl - Outstanding Example
120. G - N Peacock 9" Plate - Smooth Back - Scarce and Gorgeous
121. Fantastic PO - Dugan Flat 9-1/4" Apple Blossom Twigs Plate - 2" or Opal
122. Great Lime Vas. - Fenton 6-1/2" Holly Hat - 2 Sides Up - Radium Beauty
123. Fabulous Radium M - Fenton 9-3/8" Flat Peacock At Urn Plate - A Show Stopper
124. M - Buzz Saw and File 3-1/2" Round Sherbet - Not Listed In Guides
125. Scarce M - Buzz Saw and File Lemonade Tumbler
126. M - Rising Sun Tumbler - Scarce and Pretty
127. M - Hobstar and Shield Tumbler - Radium and Nice
128. Cobalt B - Lucille Tumbler - Got One Of These?
129. M - Imp. Waffle Block Tumbler - Very Rare Find
130. M - Imp. Star and File 3-5/8" Jail Cordial - Rare Little Piece!
131. M - Zipper Stitch Cordial Decanter w/Stopper - Another Neat Find
132. Rare Olive G - Imp. Octagon Decanter w/Stopper - Flash In Stopper Base - Find Another
133. Rich M - Fenton Lattice and Grape Tumbler - Super Example
134. B - Fenton Lattice and Grape Tumbler - Scarce and Loaded w/Irid.
135. Scarce B - Fenton Ten Mums Tumbler
136. Honey Amber - U.S. Glass Palm Beach Tumbler - Extra Nice
137. Radium M - U.S. Glass Palm Beach Tumbler - Rare Find
138. W - U.S. Glass Palm Beach Tumbler - Sm. Base Crack
139. Vas. Opal - Fenton Curtain Optic Lemonade Tumbler - An Uncommon Find
140. M - U.S. Glass Cosmos and Cane Tumbler
141. Pastel Honey Amber - U.S. Glass Cosmos and Cane Tumbler
142. G - N Grape and Gothic Arches Tumbler - Highly Sought After
143. B - N Grape and Gothic Arches Tumbler - Electric Highlights
144. P - N Acorn Burrs Tumbler - Always A Favorite
145. G - N Acorn Burrs Tumbler - Scarce and Beautiful
146. A - N Acorn Burrs Tumbler - Blue and Pink Highlights
147. W - N Peach Tumbler - Frosty and Colorful
148. Electric B - N Peach Tumbler
149. B - N Peacock at Fountain Tumbler
150. M - N Dandelion Tumbler - Near Pumpkin
151. Soft P - N Dandelion Tumbler - Loaded with Color
152. G - N Singing Birds Tumbler - Pastel Irid.
153. M - N Singing Birds Tumbler - Way Above Average
154. G - N Singing Birds Tumbler - Alaskan Effect - Different
155. M - Fenton Apple Tree Tumbler - Lots of Blues and Pinks
156. B - Fenton Apple Tree Tumbler - Silver & Gold
157. A - N Tree Trunk 8-3/4" Vase
158. M - Fenton Mikado 9-1/2", Sq. 8 Ruffle Compote - Neat Pattern
159. Lav. - N Leaf and Beads Nut Bowl - Rare Flared, Beaded Top - Few Known
160. Lav. - Fenton 8", Ball Ftd. Square 8 Ruffle Grape and Cable Bowl
161. G - Fenton 8", Spat Ftd. Square 8 Ruffle Grape and Cable Bowl - Radium
162. Light M - Fenton 8", JIP Horse Medallion Bowl - Radium Silver
163. B - Fenton 8-1/2", 6 Ruffle Thistle Bowl - Beautiful Example
164. G - Fenton Collar Base, 8-3/4", Sq. 8 Ruffle Peacock and Grape Bowl
165. A - Fenton 7-1/2", Tight CRE Vintage Grape Bowl - Pretty Silver Interior
166. M - Fenton 9", Collar Base, 8 Ruffle Chrysanthemum/Windmill Bowl
167. G - Fenton Orange Tree 9", Sq. 8 Ruffle Bowl - Trunk Center
168. G - Fenton Vintage (Grape) 7", 6 Ruffle Bowl - Very Pretty Item
169. G - Fenton Autumns Acorn 8-1/4", 3 in 1 Bowl - Scarce Rim Treatment
170. M - N Grape and Gothic Arches Water Pitcher - Radium Pinks
171. M - N Singing Birds Water Pitcher - More Scarce Than Green
172. Soft M - N Peacock At Fountain Water Pitcher
173. M - Imp. Octagon 8" Pitcher - Dark w/Abundant Color
174. M - Dugan Floral and Grape Water Pitcher and Six Tumblers
175. Beautiful M - Imp. Grape 7 pc. Water Set - Dark, Well-Matched Set
176. P - N Grape and Cable 7 pc. Water Set
177. Dugan Blue - Stork and Rushes Complete 7 pc. Water Set - Great
178. P - Imp. Diamond Lace 7 pc. Water Set - Electric Set
179. Gorgeous M - Fenton Orange Tree Orchard Water Pitcher - Radium Pinks Galore


- \_\_\_\_\_ 180. Pumpkin M - Imp. Fashion Water Pitcher
- \_\_\_\_\_ 181. M - Imp. Fashion Punch Bowl - No Base - Great Color
- \_\_\_\_\_ 182. Radium M - Imp. Banded Fleur De Lis 9-3/4" 6 Ruffle Bowl - Rare Beauty
- \_\_\_\_\_ 183. Radium M - Draped Arch (?) 8-3/4" CRE Bowl - Plain Int.
- \_\_\_\_\_ 184. Cobalt B - Fenton Vintage (Grape) 8-1/2", 3 in 1 Bowl - Extra Nice
- \_\_\_\_\_ 185. P - N Grape and Cable Bonbon - BW Ext.
- \_\_\_\_\_ 186. B - N Round Bushel Basket - Desirable and Above Average
- \_\_\_\_\_ 187. P - N Good Luck Ruffled Bowl - Rib Ext. - Multi Electric
- \_\_\_\_\_ 188. P - N Singing Birds 4-3/4" Rd. Berry Dishes - 4 x \$
- \_\_\_\_\_ 189. VERY SCARCE G - N Hearts and Flowers Compote - A Beauty
- \_\_\_\_\_ 190. M - Fenton Fantail 10-1/4", Ball Ftd., Low 6 Ruffle Bowl - Blues and Yellows
- \_\_\_\_\_ 191. M - Fenton Little Fishes 9-3/4", 8 Ruffle, Ftd. Bowl - Beautiful and In Demand
- \_\_\_\_\_ 192. W - Fenton Orange Tree 9", 6 Ruffle Bowl - Blues and Yellows
- \_\_\_\_\_ 193. W - Fenton Cherry Chain Vt. 10-1/2", 6 Ruffle Bowl - Great Eye Appeal - White at Its Finest
- \_\_\_\_\_ 194. G - Fenton Peacock and Grape 9", Spat Ftd. Plate - Rim Chip
- \_\_\_\_\_ 195. G - N Blossomtime Ruffled Compote - Scarce w/Emerald Highlights - Great Example
- \_\_\_\_\_ 196. Rare G - N Grape and Cable Candlelamp - Nicely Matched Top and Bottom
- \_\_\_\_\_ 197. Radium G - Millersburg Boutonniere Ruffled Compote - Excellent Look
- \_\_\_\_\_ 198. B - Fenton Sailboats 6", 6 Ruffled Little Bowl - Orange Tree Ext.
- \_\_\_\_\_ 199. A - Fenton Butterfly Card Tray Bonbon
- \_\_\_\_\_ 200. Fantastic A - Fenton Peacock Tail 9-3/4", 3 in 1 Bowl - **EVER SEEN ONE?**
- \_\_\_\_\_ 201. G - Fenton Peacock Tail 5", Deep, Rd. Berry Bowls - 2 x \$
- \_\_\_\_\_ 202. M - Fenton Two Fruits Divided Bonbon - Extra Nice and Scarce
- \_\_\_\_\_ 203. P - Westmoreland Louisa Rosebowl
- \_\_\_\_\_ 204. B - Fenton Birds and Cherries Ruffled Compote
- \_\_\_\_\_ 205. A - Fenton Birds and Cherries Ruffled Compote
- \_\_\_\_\_ 206. B - Fenton Vintage (Grape) Ruffled Compote - Extra Pretty
- \_\_\_\_\_ 207. A - Fenton Vintage (Grape) Ruffled Compote - Silver & Pink
- \_\_\_\_\_ 208. G - Fenton Vintage (Grape) Ruffled Compote - Dark and Nice
- \_\_\_\_\_ 209. A - Fenton Stippled Rays Ruffled Compote
- \_\_\_\_\_ 210. B - Blackberry Spray Ruffled Hat - Rich, Heavy Marigold Overlay
- \_\_\_\_\_ 211. M - Fenton Flowering Dill 5-1/2" Ruffled, CRE Hat
- \_\_\_\_\_ 212. B - Fenton Ruffled 5-1/4" Hat
- \_\_\_\_\_ 213. M - Fenton Lions 6-1/2", Rd., Flared Bowl
- \_\_\_\_\_ 214. P - N Thin Rib 11" Vase - Excellent Coloration
- \_\_\_\_\_ 215. M - N Tree Trunk Vt. 9-1/2" Vase - Square Opening, Clear Base
- \_\_\_\_\_ 216. P - N Tree Trunk 13-3/8" Mid-Size Vase - Gorgeous Multi-Electric
- \_\_\_\_\_ 217. Extra Nice P - N Diamond Point 10-5/8" Vase - Colorful
- \_\_\_\_\_ 218. G - N Tree Trunk Vt. 8-1/2" Vase - Alaskan Effect
- \_\_\_\_\_ 219. G - N Fine Rib 11-1/2" Vase - Radium Emerald Highlights
- \_\_\_\_\_ 220. G - N Fine Rib 7" Squatty Vase - Alaskan Effect
- \_\_\_\_\_ 221. G - N Tree Trunk Vt. 6-1/4" Squatty Vase - Alaskan Effect
- \_\_\_\_\_ 222. G - N Thin Rib Vt. 9-1/2" Vase - Alaskan Effect
- \_\_\_\_\_ 223. M - N Thin Rib 6-1/4" Squatty Vase - 5" Opening - Beautifully Iridized
- \_\_\_\_\_ 224. P - N Thin Rib 8-3/4" Vase - Blues and Pinks
- \_\_\_\_\_ 225. Pumpkin M - N Drapery 8-1/2" Vase - Outstanding Example
- \_\_\_\_\_ 226. M - Dugan Big Basketweave 8-3/4" Vase - Top To Bottom Irid.
- \_\_\_\_\_ 227. Helios G - Imp. Ripple 12" Vase - Clean Example
- \_\_\_\_\_ 228. P - Imp. Ripple 11-1/2" Vase - Multi Electric
- \_\_\_\_\_ 229. P - Fenton April Showers 11-1/2" Vase - Peacock Tail Int. - Sweet!
- \_\_\_\_\_ 230. M - Fenton April Showers 11-1/4" Vase - 9" Front Height - Nice Effect
- \_\_\_\_\_ 231. Dark M - Fenton Rustic 9-1/4" Vase
- \_\_\_\_\_ 232. Beautiful M - Imp. Columbia Ruffled Vase - Radium Blues and Pinks
- \_\_\_\_\_ 233. Teal - Westmoreland JIP Corinth 8-1/4" Vase - Great Base Color
- \_\_\_\_\_ 234. Rosey Pink Hyacinth - GWTW Lamp Base - Only w/Font - Rarely Seen
- \_\_\_\_\_ 235. M - Fenton Dragon & Lotus 8-1/2", ICS Bowl - It's Pretty
- \_\_\_\_\_ 236. Great B - Dragon & Lotus 9", Sq. 8 Ruffle Bowl
- \_\_\_\_\_ 237. Scarce, Gorgeous A - Fenton Dragon and Lotus 8-1/2", 3 in 1 Bowl
- \_\_\_\_\_ 238. A - Fenton Dragon and Lotus, 7-3/4", Spat Ftd., 8 Ruffle Bowl - Minor Spur Chip
- \_\_\_\_\_ 239. Deep B - Fenton Dragon and Lotus 9", 8 Ruffle Bowl - Silver Irid.
- \_\_\_\_\_ 240. B - Fenton Leaf Chain 7-3/4" Plate
- \_\_\_\_\_ 241. G - Fenton Grape and Cable 7-3/4", 8 Ruffle, Spat Ftd. Bowl - Rainbow Irid.
- \_\_\_\_\_ 242. M - Fenton Peacock at Urn 8", ICS Bowl - Pinks and More Pinks
- \_\_\_\_\_ 243. Very Scarce B - Fenton Persian Medallion 9-1/4" Plate - Super Eye Catcher - Blue Hi-Lites
- \_\_\_\_\_ 244. A - Fenton Plaid 9" Plate - Slightly Turned Up - Rare and Superb Iridescence
- \_\_\_\_\_ 245. M - Millersburg Hanging Cherries Spooner - Gold Satin
- \_\_\_\_\_ 246. G - Millersburg Blackberry Wreath 6-1/4", 3 in 1 Bowl - Lovely Satin - It's Pretty
- \_\_\_\_\_ 247. A - Millersburg Rosalind 10-1/4", 6 Ruffle Bowl - Attractive Center
- \_\_\_\_\_ 248. G - Millersburg Trout and Fly 9", Low 6 Ruffle Bowl - Colorful Satin Finish
- \_\_\_\_\_ 249. P - N Grape and Cable Vt. Small Punch Bowl Base
- \_\_\_\_\_ 250. Mammoth P - N Banquet Size Grape and Cable Punch Bowl, Base, 12 Cups - **Collector's Dream!**
- \_\_\_\_\_ 251. Rich M - N Grape and Cable Vt. Small Size Punch Bowl, Base and 8 Cups
- \_\_\_\_\_ 252. Gorgeous G - N Grape and Cable Vt. Small Size Punch Bowl and Base - Round 11-1/4" Top - Pulled Up Tips
- \_\_\_\_\_ 253. G - N Stippled Grape and Cable Punch Cup
- \_\_\_\_\_ 254. P - N Memphis Fruit Bowl, Base, Six Cups - Very, Very Pretty - A Keeper
- \_\_\_\_\_ 255. G - N Acorn Burrs Punch Bowl - No Base
- \_\_\_\_\_ 256. M - Imp. Fashion Punch Bowl, Base, Eight Cups



- \_\_\_\_\_ 257. M - Imp. 12-1/4" Rd. Broken Arches Punch Bowl, Base, 7 Cups - Plain Int.
- \_\_\_\_\_ 258. W - N Memphis Punch Cups 2 x \$
- \_\_\_\_\_ 259. M - N Grape and Cable Banana Bowl - Colorful and No Wear
- \_\_\_\_\_ 260. P - N Grape and Cable Hatpin Holder - Superior Iridescence
- \_\_\_\_\_ 261. M - N Grape and Cable Hatpin Holder - Colorful Example
- \_\_\_\_\_ 262. P - N Grape and Cable Vt. 9" Ruffle Bowl - Plain Ext. - Fantastic Electric Irid.
- \_\_\_\_\_ 263. G - N Grape and Cable 9" Ruffled Bowl - BW Ext.
- \_\_\_\_\_ 264. P - N Grape and Cable Sweetmeat w/Lid - Outstanding Example
- \_\_\_\_\_ 265. Ultra Rare B - N Grape and Cable Sweetmeat Base - Cracked, But Still Rare
- \_\_\_\_\_ 266. AO - N Grape and Cable PCE, Stippled Bowl - Marvelous Butterscotch Overlay - Also Rare
- \_\_\_\_\_ 267. Ice B Opal - N Rose Show Ruffled Bowl - Opal Tips on Roses - Rare Pastel
- \_\_\_\_\_ 268. Dark Ice B - N Rose Show Ruffled Bowl - Pinks and Yellows - Also A Tough Find
- \_\_\_\_\_ 269. P - N Three Fruits PCE Bowl - Plain Ext. - Loaded with Electric Irid.
- \_\_\_\_\_ 270. P - N Grape and Cable 8-3/4", Ruffled Bowl - BW Ext. - Bright and Colorful
- \_\_\_\_\_ 271. Fantastic M - N Grape and Cable Vt. PCE Bowl - Rib Ext.
- \_\_\_\_\_ 272. Pumpkin M - N Three Fruits 9" Stippled, Ruffled Bowl - Rib Ext. - Hot Pinks
- \_\_\_\_\_ 273. Rich M - Fenton Orange Tree 8-1/2", Low ICS Bowl - Excellent Irid.
- \_\_\_\_\_ 274. Elec. B - Fenton Holly 8-1/2" ICS Bowl - Show Stopper
- \_\_\_\_\_ 275. Aqua - Fenton Acorn 7-3/4", 8 Ruffle Bowl - Scarce Base Color
- \_\_\_\_\_ 276. Pumpkin M - Fenton Acorn 7-3/4", 8 Ruffle Bowl
- \_\_\_\_\_ 277. B - Dugan Windflower 9-1/4" Plate
- \_\_\_\_\_ 278. B - Fenton Captive Rose 6-1/4", 6 Ruffle Compote
- \_\_\_\_\_ 279. Amethyst Slag - Fenton Peacock and Dahlia 7-1/4", 6 Ruffle Bowl - Real Unusual
- \_\_\_\_\_ 280. MMG - Westmoreland Carolina Dogwood 8-1/2", 6 Ruffle Bowl - Great, Undervalued Pattern
- \_\_\_\_\_ 281. PO - Dugan Ski Star and Compass 10-7/8", 6 Ruffle Bowl - 2-3/4" Opal
- \_\_\_\_\_ 282. P - N Three Fruits Medallion 9", 8 Ruffle, Spat Ftd. Bowl - Electric Irid.
- \_\_\_\_\_ 283. P - Dugan Double Stem Rose 8-3/4", Rd., Dome Base Bowl - Lots of Color
- \_\_\_\_\_ 284. A - N Grape and Cable 8-3/4", 8 Ruffle Bowl - BW Ext. - Dark and Nice!
- \_\_\_\_\_ 285. M - Imp. Rococo 4-1/4" Vase - Rich Color and Irid.
- \_\_\_\_\_ 286. Cherry Red - Fenton 6", 2 Row, O.E. Basket - 2 Sides Up
- \_\_\_\_\_ 287. Cobalt B - Fenton 5-1/2", 2 Row, JIP, O.E. Basket
- \_\_\_\_\_ 288. Rich Ice B - N 8-Sided Bushel Basket
- \_\_\_\_\_ 289. B - Dugan Peacock At Fountain Tumbler
- \_\_\_\_\_ 290. P - N Grape and Cable Tumbler
- \_\_\_\_\_ 291. Vaseline Topaz - N Concave Diamonds Tumbler and Coaster
- \_\_\_\_\_ 292. Sapphire - N Concave Diamonds Tumbler and Coaster
- \_\_\_\_\_ 293. B - Enameled Ground Cherries Tumbler - Extraordinary Electric Irid.
- \_\_\_\_\_ 294. B - Absentee Pattern Tumbler - Same Shape as #293 - Paneled Int.
- \_\_\_\_\_ 295. Rich M - Enameled Lotus Tumbler
- \_\_\_\_\_ 296. Dark M - Silver Band Tumbler - One Of Six Known
- \_\_\_\_\_ 297. W - Enameled Crocus Tumbler - Frosty Example - Scarce
- \_\_\_\_\_ 298. Ice G Vas. - Enameled Shasta Daisy Tumbler - Not Often Seen
- \_\_\_\_\_ 299. Rare G - Enameled Iris w/Prism Band Tumbler
- \_\_\_\_\_ 300. M - Hobstar and Feather Tumbler - Sgnd. Crider - Fabulous Color
- \_\_\_\_\_ 301. M - Enameled Silver Queen Tumbler - Difficult to Find
- \_\_\_\_\_ 302. Awesome M - Fenton Lions 7-3/4" Plate - Detail, Color, The Works
- \_\_\_\_\_ 303. AO - N Dandelion Mug - Soft Butterscotch, Great Opalescence - Loaded w/Opal
- \_\_\_\_\_ 304. B - N Peacocks 9-1/4" Plate - Rib Ext. - Iridescence Everywhere
- \_\_\_\_\_ 305. Dark Ice B - N Peacock At Urn 10" ICS Bowl - Blues and More Blues - Outstanding Color
- \_\_\_\_\_ 306. Soft A - N Peacock At Urn 10" ICS Bowl - Rich Purples and Golds - Hot Pattern
- \_\_\_\_\_ 307. Radium A - N Peacock at Urn 5-1/2" ICS Bowl - Superb
- \_\_\_\_\_ 308. Pumpkin M - N Peacock at Urn 5-1/2" ICS Bowl - Superb
- \_\_\_\_\_ 309. B - N Peacock at Urn Fully Stippled 5-1/2" ICS Bowl
- \_\_\_\_\_ 310. Ice G - N Peacocks 9" Plate - Rib Ext. - Blues and Pinks - A Step Above
- \_\_\_\_\_ 311. M - N Peacocks Ruffled Bowl - Beautifully Iridized
- \_\_\_\_\_ 312. Rare Ice G - N PCE Peacocks Bowl - Rib Ext. - Soft Blue Highlights
- \_\_\_\_\_ 313. W - N PCE Peacocks Bowl - Smooth Ext. - Soft Blue Highlights
- \_\_\_\_\_ 314. W - N 9", Ruffled Peacocks Bowl - Rib Ext. - Nice
- \_\_\_\_\_ 315. Elec. P - N Peacocks Ruffled Bowl - Gorgeous, But Has A Chipped Tooth
- \_\_\_\_\_ 316. P - N Grape and Cable 4-3/4" Rd. Sherbet w/Pedestal Base
- \_\_\_\_\_ 317. P - N Petals 7-1/2" Ruffled Short Stemmed Compote
- \_\_\_\_\_ 318. A - N Strawberry PCE Bowl - Beautiful Multi Elec. - BW Ext.
- \_\_\_\_\_ 319. G - N Strawberry PCE Bowl - BW Ext. - Scarce Color, Loaded w/Irid.
- \_\_\_\_\_ 320. P - N Strawberry 9", Ruffled Bowl - BW Ext. - Rainbow Irid.
- \_\_\_\_\_ 321. A - N Three Fruits Medallion 9", Spat. Ftd., Ruffled Bowl - Beautiful Pattern
- \_\_\_\_\_ 322. Lav. Smoke - N Three Fruits 8-3/4", Ruffled Bowl - Pastel Irid.
- \_\_\_\_\_ 323. M - N Three Fruits 8-3/4", Ruffled Bowl - Pretty One
- \_\_\_\_\_ 324. M - N Three Fruits 8-3/4", Ruffled Bowl - BW Ext.
- \_\_\_\_\_ 325. Lav. - N Sunflower Spat Ftd., Deep 8-Ruffle Bowl - Radium
- \_\_\_\_\_ 326. Rare M - N Stippled Good Luck Plate - Rib Ext. - A Beauty, But One Tip Off
- \_\_\_\_\_ 327. Multi Electric P - N Greek Key 8-1/2" Ruffled Bowl - BW Ext.
- \_\_\_\_\_ 328. BLUE - N Poinsettia and Lattice Ftd., 8-3/4" Ruffled Bowl - Strong Old-Fashioned Irid.
- \_\_\_\_\_ 329. Extra Nice A - N Wishbone 8", Ftd., Ruffled Bowl



- \_\_\_\_\_ 330. G - N Wishbone 8-1/2", Ftd. Ruffled Bowl - Super Greens and Pinks
- \_\_\_\_\_ 331. Very Scarce G - N Round Bushel Basket
- \_\_\_\_\_ 332. G - N Fruits and Flowers Footed Bonbon - Excellent Irid.
- \_\_\_\_\_ 333. A - N Smooth Rays 2 Handled Bonbon - Lots of Color
- \_\_\_\_\_ 334. M - N Grape Leaves 9", 6 Ruffle Bowl - Pretty
- \_\_\_\_\_ 335. Smoke - Imp. Smooth Rays 7-3/4", 8 Ruffle Bowl - Loaded w/Irid.
- \_\_\_\_\_ 336. Outstanding Smoke - Imp. Smooth Rays Vt. 9-1/2" Plate - No Star In Base
- \_\_\_\_\_ 337. Radium Amber - Imp. Scroll Embossed 6", 8 Ruffle Compote
- \_\_\_\_\_ 338. M - Fenton Butterfly and Berry Tumbler
- \_\_\_\_\_ 339. M - Fenton Water Lily and Cattails Tumblers - 2 x \$
- \_\_\_\_\_ 340. P - Dugan Floral and Grape Tumblers - 2 x \$ - Radium Silver
- \_\_\_\_\_ 341. M - Dugan Peacock at Fountain Vt. Tumbler - Scarce
- \_\_\_\_\_ 342. Clambroth - Imp. Lustre Rose Vt. Tumbler - Scarce and Nice
- \_\_\_\_\_ 343. P - N Grape Arbor Tumblers - 5 x \$
- \_\_\_\_\_ 344. B - Fenton Butterfly and Berry Tumblers - 5 x \$
- \_\_\_\_\_ 345. P - N Grape and Cable Punch Cups - 4 x \$
- \_\_\_\_\_ 346. G - N Greek Key and Scales 9", Ruffled, Dome Ftd. Bowl - Alaskan Effect
- \_\_\_\_\_ 347. M - N Blossom and Palms 8-3/4", Ruffled Bowl - Plain Int.
- \_\_\_\_\_ 348. M - N Beaded Cable Ruffled, Ftd.. Candy Dish w/Smooth Rays Int.
- \_\_\_\_\_ 349. G - N Beads 8", 8 Ruffle Bowl
- \_\_\_\_\_ 350. A - Fenton Stippled Rays Bonbon - 4 Sides Up
- \_\_\_\_\_ 351. M - Fenton Blackberry Spray 5-3/4", CRE, Ruffled Hat
- \_\_\_\_\_ 352. M - Dugan Windflower 8-1/2", 10 Ruffle Bowl
- \_\_\_\_\_ 353. M - Beaded Panels 4-1/2" Rd. Powder Dish w/Lid - Radium
- \_\_\_\_\_ 354. M - Lea 3-1/2" Tall Cream Pitcher - Neat Item
- \_\_\_\_\_ 355. M - Imp. Twins Fruit Bowl Base
- \_\_\_\_\_ 356. M - Fenton Cherry Circles 8-1/2" 4 Sides Up Bonbon
- \_\_\_\_\_ 357. M - Dugan Cosmos Vt. 9-1/2", 6 Ruffle Bowl
- \_\_\_\_\_ 358. M Flashed - Engraved Daisy 9" Tall Vase - Believed To Be Scarce - Not Listed
- \_\_\_\_\_ 359. M - Jeanette 7" Golden Flowers Vase
- \_\_\_\_\_ 360. Books - Marion Hartung Carnival Glass 10 Vol. Set
- \_\_\_\_\_ 361. Book - Tumblers With A Past
- \_\_\_\_\_ 362. Book - Sherman Hand Colors In Carnival Glass - Bk. 4
- \_\_\_\_\_ 363. Books - Five Marion Hartung Carnival Glass Price Guides - Late 70's, Early 80's
- \_\_\_\_\_ 364. Books - Edwards Carnival Glass Price Guides 5th and 8th Editions

 **NOTE: Approximately 18 Box Lots of Miscellaneous Carnival Glass - Great For Dealers or Collectors! Sold in box lots due to damage, color or commonness of patterns.**

### **SPECIAL NOTE:**

**NO SUNDAY CALLS, PLEASE!**

Winning Absentee Bidders will be contacted Monday through Wednesday of the week following the Auction!

Thank You!


For Free Color Catalogs & Information Write:

Mickey Reichel

516 Third Street, Boonville, MO 65233-1536

or Call: 660-882-5292 days or

660-882-5283 evenings

 E-mail: [mreichel@undata.com](mailto:mreichel@undata.com)

**NEED QUALITY CARNIVAL GLASS & ANTIQUES**

*"We don't want all the Business,  
Just Yours."*

**WE DO AUCTIONS RIGHT!!**

## **2003 CALENDAR**

**March 8, 2003**

**BIG ANTIQUE AUCTION**

at Boonville, Mo. Auction Gallery

**April 12, 2003**

**WOODSLAND WORLD WIDE CARNIVAL**

**GLASS ASSOCIATION CONVENTION**

**GIANT FLORIDA COLLECTION**

**RUDY A. KOVACS & FRED L. WARREN**

at St. Louis, Missouri

**May 24, 2003**

**CARNIVAL GLASS AUCTION**

**ILLINOIS COLLECTOR**

**DAVE AND REVA DRABING**

at Boonville, Mo. Auction Gallery

**June 21, 2003**

**CARNIVAL GLASS COLLECTION**

at Boonville, Mo. Auction Gallery

**October 17-18, 2003**

**18TH AIR CAPITAL**

**CARNIVAL GLASS CONVENTION**

at Wichita, Kansas

