

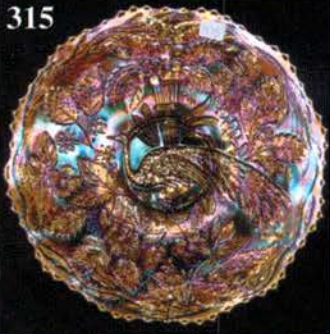
CARNIVAL GLASS AUCTION

Saturday, February 22, 2003 9:00 a.m.

★ Collection of Quality and Color ★

RALPH BURTON COLLECTION OF MINNESOTA

315



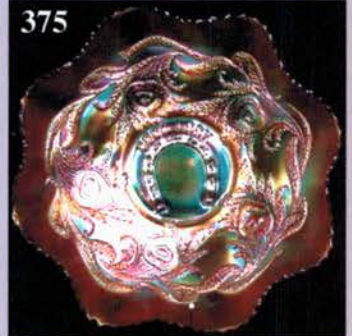
300



209



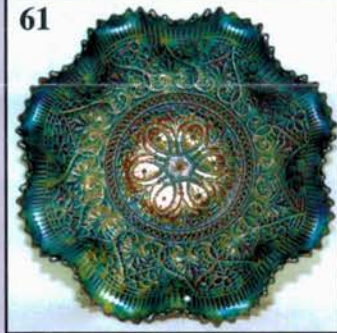
375



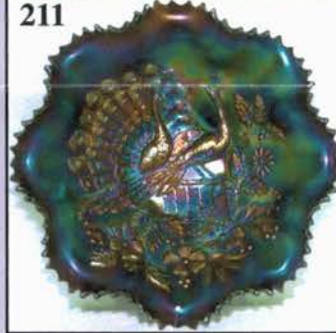
63



61



211



60



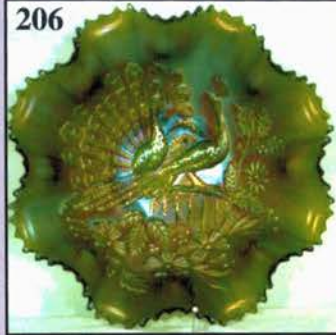
317



207



206



323



Held By the Mickey Reichel Antique & Auction L.C.

Office: 660-882-5292 • Home: 660-882-5283

☛ WEB SITE: <http://www.yourauctionpage.com/reichel>

E-mail: mreichel@undata.com

Held Inside the Mickey Reichel Auction Center

1 Mile North of I-70 on Hwy. 5, Exit 101, Boonville, Missouri • 20 Miles West of Columbia, MO on I-70

Preview Friday 12 p.m. - 5 p.m. and 7:30 a.m. - 9:00 a.m. Day of Auction



TERMS: Cash or Good Check, VISA and MasterCard accepted.



3% Clerking Fee on all purchases except for payment of cash or check. Proper I.D. required.

WEB SITE: www.yourauctionpage.com/reichel

ABSENTEE BID POLICY:

WRITE IN BIDS: If you are unable to attend the auction, we will be happy to accept absentee bids which must be received by THURSDAY, FEBRUARY 20, 2003. Don't Delay. E-Mail: mreichel@undata.com

FOR AUCTION PRICE RESULTS: Send \$3.00 and Large S.A.S.E. to 516 Third Street, Boonville, MO 65233-1536

PLEASE NOTE: There is a **\$5 handling charge for each successful bid which will be added to the selling price** for all write-in bids. This is in addition to the cost of postage, insurance and packing. Your write-in bid will be entered just as if you are present and bidding. **Successful bidders will be notified in 1 to 3 days by the auctioneer (so be sure to include your phone number).** Direct mail bids to Auctioneer **Mickey Reichel, 516 Third Street, Boonville, MO 65233-1536.** Terms: Cash or Check accepted with proper I.D. and Social Security Number and References. Announcements made day of the auction supercede all printed material. Not Responsible for Accidents or Sold Items.

No return on any items once they leave the Auction Center (No Exceptions).****

Call for additional information: 660-882-5292 days or 660-882-5283 evenings before 9:00 p.m.

FAX: 660-882-5292 (evening hours start FAX transmission after beep)

MAIL BIDS: Items are bid on in perfect condition with average or above iridescence OR as listed in the brochures. Bids will not be carried out when damage on an item has been found during the auction.

PEOPLE PRESENT AT AUCTION ARE RESPONSIBLE FOR FINDING ANY PINHEADS, WEAR, SPOTTINESS, MANUFACTURER'S DEFECTS OR ANY OTHER MINOR FLAWS, ETC. *****

NOTE: Read each line, as we have accentuated the type of no particular piece, all are special.

Make Reservations EARLY at one of these local motels:

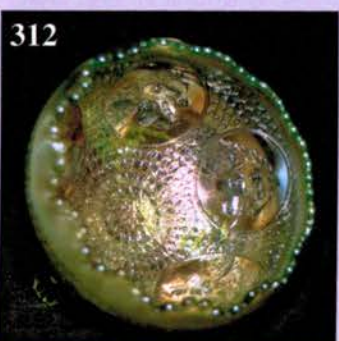
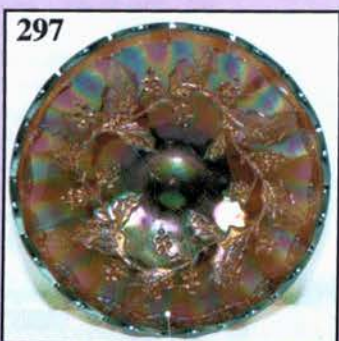
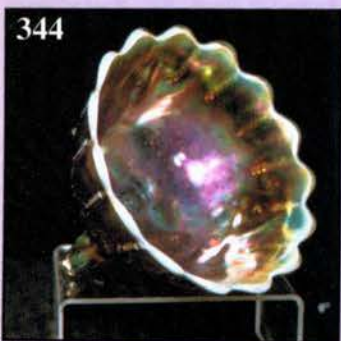
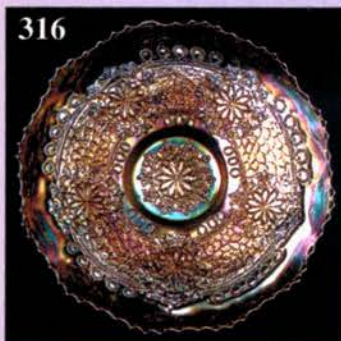
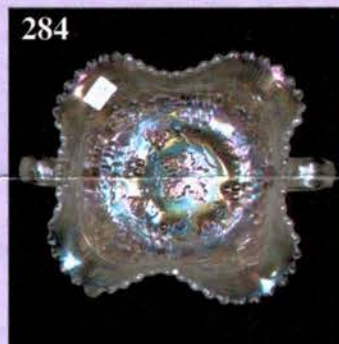
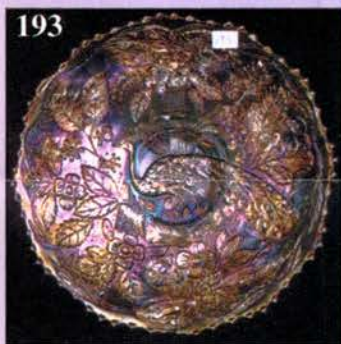
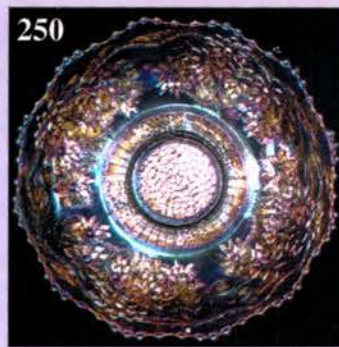
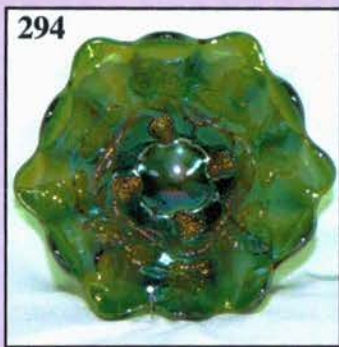
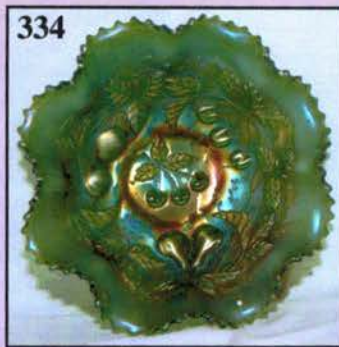
Days Inn: 660-882-8624 • Comfort Inn: 660-882-5317 • Super 8: 660-882-2900 • Holiday Inn: 660-882-6882

Auction Consists of Rarity, Great Irid. and Variety

THANK YOU FOR ATTENDING TODAY

- | | | | |
|-------|--|-------|--|
| _____ | 1. M - Imp. 4-3/4" Thin Rib and Drape Vase - Extra Nice | _____ | 13. P - Imp. 10-3/4" Ripple Vase - Another Electric Winner |
| _____ | 2. P - Imp. 6-1/2" Morning Glory Vase - Electric | _____ | 14. P - Imp. 8-1/2" Squatty Mid-Size Ripple Vase - 3-1/4" Base, 5" Opening |
| _____ | 3. Clear Base - Imp. 7-1/4" Morning Glory Vase - Pastel Irid. with Clambroth Overlay | _____ | 15. Smoke - Imp. 11-1/2" Ripple Vase - Uncommon Color |
| _____ | 4. Smoke - Imp. 7" Morning Glory Vase - Very Nice | _____ | 16. M - Imp. 6-3/4", JIP Curled Rib Vase - 6" Top |
| _____ | 5. Dark, Rich M - Imp. Smooth Panels 4" Squatty Vase - 4-1/4" Opening | _____ | 17. M - Imp. Squatty 7-1/2" Curled Rib Vase - 6" Flared Opening |
| _____ | 6. Lav. - Imp. 6" Morning Glory Vase | _____ | 18. Fantastic P - Imp. 11" Freefold Vase - Dripping with Iridescence |
| _____ | 7. M - Imp. 11" Beaded Bullseye Vase - Way Above Average Color | _____ | 19. M - Imp. 6" Pillar and Flute Footed Vase |
| _____ | 8. P - Imp. 11-3/4" Beaded Bullseye Vase - Super Elec. | _____ | 20. Clear Base - Imp. 11-1/2" Smooth Panels Funeral Vase - 7-3/4" Opening - Marigold Overlay |
| _____ | 9. Rich M - Imp. 6-3/4" Squatty, Mid-Size Beaded Bullseye Vase - 3-3/8" Base, 5-5/8" Opening | _____ | 21. M - Bulbous 5-3/4" Halloween Vase - Really Different |
| _____ | 10. EXQUISITE EMERALD GREEN - Imp. 10-3/4" Beaded Bullseye Vase - Fabulous Find! | _____ | 22. Dark Smoke - Imp. Rococo 4-3/4" Vase - Superb Color and Detail |
| _____ | 11. P - Imp. 9" Ripple Vase - Fantastic Radium Electric | _____ | 23. Imp. - MMG Free Blown Lead Lustre Art Glass Series 9" Vase - Great Find |
| _____ | 12. Sapphire - Imp. 10-3/8" Ripple Vase - Rare Color | _____ | 24. Imp. - MMG w/Draper Design Free Blown Lead Lustre Art Glass 8-1/2" Vase - Also Scarce |

25. Pastel Yellow Amber - N 8-1/2" Thin Rib Vase - 5" Flared Opening - Starred Base Vt.
26. Amber - Imp. Loganberry Vase - Extra Nice Example
27. M - Imp. Handled Vase - Plain - 8" Tall
28. M - Imp. 8-1/2" Colonial Lady Vt. Large Vase - 6" Base, 6" Ruffled Top
29. Rare Powder B Base - Stork In Rushes Tumbler w/Colorful Marigold Overlay
30. W - Fenton Orange Tree Ftd. Tumbler
31. Scarce Dugan B - Beaded Shell Tumbler - Nice Irid.
32. P - Dugan Beaded Shell Tumbler - Also Nice
33. Deep P - N Grape and Cable Tumbler - Great Electric Finish
34. Rare M - Dugan Harvest Flower Tumbler - Extra Nice
35. Elec. P - Imp. Grape Tumbler - Need I Say More?
36. Pumpkin M - Fenton Bouquet Tumbler
37. Celeste B - N Concave Diamonds Tumbler w/Coaster
38. Honey Amber - U.S. Glass Cosmos and Cane Tumbler
39. P - N Acorn Burrs Tumbler
40. Awesome Elec. P - Imp. Windmill Tumbler - Radium Winner!
41. Lav. - Dugan Floral and Grape Tumbler - Strong Radium Irid.
42. P - Imp. Diamond Lace 7 pc. Water Set - Fantastic Electric
43. BA - Italian Hobnail 10-1/2" Water Pitcher
44. Clambroth - Imp. Waffle Block Water Pitcher
45. M - Imp. Flute and Cane 8-1/2" Water Pitcher
46. M - Fenton Floral and Grape Vt. Bulbous Water Pitcher - Fantastic Color, Great Find
47. M - Imp. Tiger Lily Water Pitcher with 5 Matching Tumblers - Great Set
48. Smoke - Imp. Soda Gold Water Pitcher - Superb Example
49. Smoke - Imp. Soda Gold Tumblers - Choice A, B, C or D
50. P - Dugan Wreathed Cherry Water Pitcher - Marie Chipped
51. P - Dugan Wreathed Cherry Tumblers - Choice A, B, C, D, E or F
52. G - N Singing Birds Water Pitcher - So Close To Emerald Green! Loads of Blues
53. G - N Singing Birds Tumblers - Choice A, B, C, D or E
54. P - N Singing Birds Water Pitcher
55. P - N Singing Birds Tumblers - Choice A, B, C, D, E or F
56. Teal - N Singing Birds Tumbler - Exceptionally Scarce
57. Dark Ice B - N Peacock at Fountain Tumbler - Rare
58. Lime Ice G - N Diamond Point 10-3/4" Vase - Pastel Pinks and Blues
59. Pastel Aqua - N Raspberry Tumbler - Gorgeous Irid. On This Rarity
60. Pumpkin M - N PCE Hearts and Flowers Bowl - Rib Ext.
61. P - N Hearts and Flowers Ruffled Bowl - Rib Ext. - Electric Blue Interior
62. Ice G - N Hearts and Flowers Ruffled Bowl - Rib Ext. - Scarce Glass Color
63. Incredible W - N Hearts and Flowers Ruffled Bowl - Just the Best for Color and Irid.!
64. Blue Opal - N Hearts and Flowers Ruffled Compote - Minor Flea Bites on Base
65. M - N Hearts and Flowers Ruffled Compote - Extra Nice - Rib Ext.
66. Pastel M - N Hearts and Flowers Ruffled Compote - Rib. Ext.
67. W - Hearts and Flowers Ruffled Compote - Plain Ext. - Base Chip
68. Blue Opal - N Hearts and Flowers Compote - Non-Iridized
69. Blue Opal - N Ruffled Rose Show Bowl - Non-Iridized
70. Blue Opal - N Three Fruits Bowl - Non-Iridized
71. Crystal - Mlbg. Ohio Star Vase
72. Crystal - Imp. Whimsey Giant Zippered Heart Rosebowl
73. Teal - Imp. 8", 8 Ruffle Scroll Embossed Bowl - Plain Ext. - Emerald Finish
74. Lime Vase. - Imp. 8", 8 Ruffle Scroll Embossed Bowl - Radium Silver Finish - Glows
75. Lav. - Imp. 9", 8 Ruffle Scroll Embossed Bowl - File Ext. - Outstanding Irid.
76. P - Imp. 7-1/2", 8 Ruffle Scroll Embossed Large Compote - Curved Star Ext. - Super Electric
77. Olive G - Imp. Scroll Embossed Ruffled Compote - Radium Finish - Smooth Ext.
78. Amber - Imp. Scroll Embossed Ruffled Compote - Loaded with Pinks and Blues
79. P - Imp. Small Ruffled Scroll Embossed Compote - Excellent Imperial Irid.
80. P - Imp. 9-1/4" Flat Scroll Embossed Plate - Electric Purples and Greens
81. M - Imp. Star and File Goblet
82. Scarce P - Imp. Grape Goblet
83. G - Imp. Flute Toothpick - Normal Nicks - Scarce Base Color
84. P - Imp. Flute Breakfast Cream and Sugar - Outstanding Set
85. P - Imp. 7-3/4", 8 Ruffle Shell and Sand Bowl - Fantastic Irid.
86. M - Imp. 9", 3 in 1 Edge Windmill Bowl - Never Seen This Shape Before
87. Smoke - Imp. 9" Deep, Rd. Lustre Rose Bowl
88. Smoke - Imp. 9" Rd., Flared Open Rose Bowl - Electric Highlights
89. Rich Amber - Imp. 8", 8 Ruffle Open Rose Bowl - Enticing Irid.
90. Aqua - Imp. 9" Flared Open Rose Vt. Bowl - Rare Color
91. Fantastic M - Imp. Open Rose 9" Plate - Loaded with Color
92. Awesome Amber - Imp. Open Rose 9" Plate - Luscious Blues and Pinks
93. Clambroth - Imp. Lustre Rose Vt. Water Pitcher
94. Deep, Rich Amber - Imp. 9" ICS, Ftd. Lustre Rose Bowl - Outstanding Shape, Color and Find
95. Clambroth - Imp. 10-3/4" Rd., Flared, Ftd. Centerpiece Lustre Rose Bowl - Plain Interior
96. M - Imp. Frosted Block Rosebowl - 4-1/2" Opening - Dark and Nice
97. M - Imp. Oval and Round Rosebowl - 5-1/2" Opening - Nice Color
98. Scarce M - Imp. Fashion Rosebowl - 6-1/2" Opening
99. Rare Dark M - Imp. Octagon Rosebowl - 5-1/2" Scalloped Opening - Cracked
100. G - Imp. Grape Cup and Saucer Set - Very Scarce
101. M - Imp. Grape 6-1/4" Plate - Excellent Radium Finish
102. Amber - Imp. Grape Ruffled Compote
103. Clambroth - Imp. Grape Ruffled Compote
104. Clambroth - Imp. Grape 9", Deep, Rd. Master Berry Bowl
105. Helios G - Imp. Grape 9", Deep, Rd. Master Berry Bowl w/4 4-1/2" Berry Bowls
106. Lav. - Imp. Grape 9" Low Ruffled Plate - Fabulous Find
107. Breathtaking Elec. P - Imp. Grape 9", 8 Ruffle Bowl - Defies Description!
108. P - Imp. Grape 8-1/2", 8 Ruffle Bowl - Multi-Color Irid. and Great Eye Appeal
109. Smoke - Imp. Vintage Center Handled Server - Loaded with Blues
110. Rich Aqua - Imp. Waffle Block 13-1/2" Tall Basket - Non-Iridized - Highly Desirable Item!



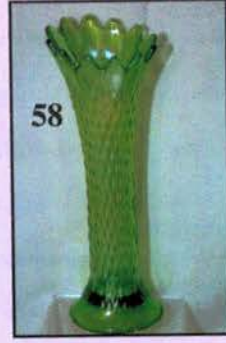
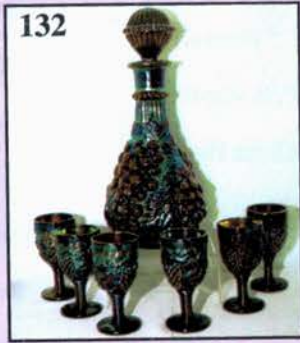
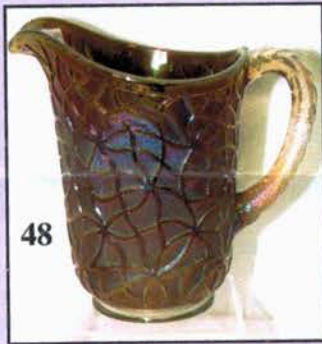
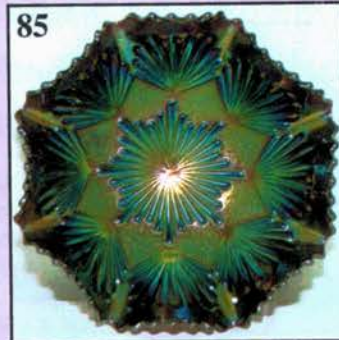
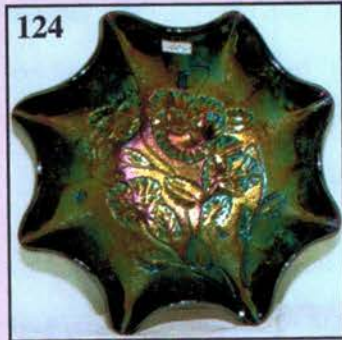
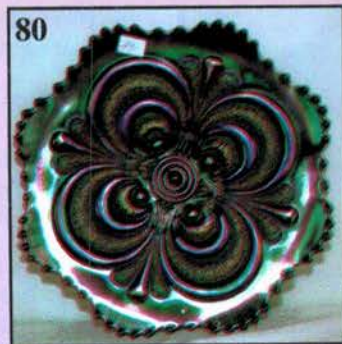
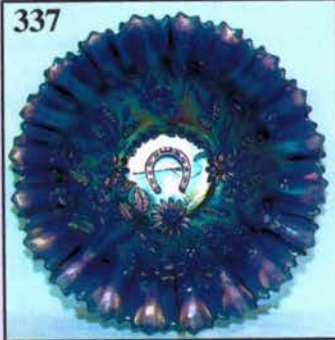
- 111. M - Imp. Flute Punch Bowl and Base
- 112. Aqua Tint - 11" U.S. Glass Whirling Star Punch Bowl - Bowl Only
- 113. M - Imp. Whirling Star Punch Bowl Set Converted to Lamp - Must See To Believe!
- 114. Smoke - Imp. Daisy 9-3/4" Tall Handled Basket - Very Scarce and Nice
- 115. Pumpkin M - Imp. 8" Rd. Snow Fancy Bowl - Exceptionally Hard to Find
- 116. M - Feathered Arrow 9-1/4", 8 Ruffle Bowl
- 117. M - U.S. Glass Flower and Diamond Round Compote - Seldom Seen
- 118. M - Imp. Hobstar Flower Ruffled Compote
- 119. M - Imp. 10-1/4" Acanthus Chop Plate
- 120. P - Imp. Heavy Grape 6-1/2" Round Bowl - Electric Irid.
- 121. P - Imp. Heavy Grape 8" Plate - Great Electric Irid.
- 122. Awesome Clambroth - Imp. Heavy Grape 8" Plate - Blues and Yellows
- 123. G - Imp. Heavy Grape 8" Plate
- 124. P - Imp. Pansy 9", 8 Ruffle Bowl - Multi Electric Beauty
- 125. P - Imp. Pansy Nappy - Beautiful Example
- 126. Dark M - Imp. 7-3/4" Ruffled Shell and Sand Bowl - Outstanding Irid.
- 127. Rich M - Imp. Soda Gold Whimsey Centerpiece Bowl - 7" Opening
- 128. Dark M - Imp. Pillar and Flute Oval Celery Dish - Iron Cross Mark
- 129. M - Imp. Butterfly Etched Lustre Vase on Balloon Blank
- 130. M - Imp. Floral and Optic Rosebowl - 6" Opening
- 131. P - Imp. Grape Carafe - Or Vase? - Fantastic Multi Iridized
- 132. P - Imp. Grape Wine Decanter and 6 Well-Matched Wines - Imperial At Its Best
- 133. M - Berry Band and Ribs Lg. Compote - 9" Opening
- 134. M - Imp. Poinsettia Milk Pitcher - Way Above Average
- 135. Smoke - Imp. Double Scroll Console Bowl and Pr. of Candlesticks
- 136. Smoke - Imp. Pair Premium Candlesticks
- 137. Amberina - Imp. Double Scroll Candlesticks - Pr.
- 138. M - 7-1/4" Tall, Bell Shape Base, 6 Sided Candlesticks - Pr.
- 139. M - 7-1/2" Tall, 3-1/4" Sq. Base Candlesticks - Pr.
- 140. Lav. Flashed - 7-3/4" Pair of Candlesticks
- 141. Vas. - 10-1/2" Florentine Candleholders - Pr. - Glows Wildly
- 142. M - Flashed - Czech Pair of Halloween Candlesticks

GROUPING OF WHIMSIES AND MINIATURES - 143 THROUGH 184

- 143. Aqua Base - Crackle Single Shaker
- 144. M - 4" DeVilbiss Perfume w/Atomizer and Paper Label
- 145. M - Lucky Bank Barrel Shaped Bank
- 146. M - "Be Wise" 7" Tall Owl Bank - Lots of Irid.
- 147. Teal - Jeanette Glass Honey Pot w/Lid
- 148. Smoky Teal - Etched Floral Cocktail Shaker w/4 Stems - Super Set
- 149. A - Westmoreland Orange Peel Punch Cup
- 150. Rare M - Pastel Swan Salt - Dark and Nice
- 151. Shriners 1911 Camel Riders Champagne
- 152. Shriners 6" Enamel Dec. 1906 Los Angeles Plate
- 153. Red Flashed - 1908 St. Paul Sheaf Of Wheat Shriners Toothpick Or Vase
- 154. Smoke - Imp. Grape Wine Glass - Not Often Seen
- 155. Scarce Smoke - Imp. Star Medallion Goblet
- 156. M - Fenton Water Lily and Cattails 3" Tall Vase or Toothpick Whimsey - Great Color
- 157. M Flashed - Federal 1-7/8" Miniature Mug - For the Moderate Drinker!

- 158. M Flashed - 3" Tall Miniature Urn Vase
- 159. M Flashed - 2-1/8" Tall Interior Panel Miniature Tumbler
- 160. M - Fenton Miniature Nut Cup
- 161. RARE - M - Chesterfield 2 Handled Toothpick
- 162. Smoke Flashed - Westmoreland Simplicity Scroll Match Holder
- 163. M Flash - Ivy In The Snow Wine - Advertising Willow Springs, Mo.
- 164. M Flash - Wine - Souvenir of Ellendale, Minn.
- 165. M Flash - Stemmed 6-1/4" Vase - Souvenir of Rochester, Minn.
- 166. M - Top to Bottom - Wine Glass - Souvenir of Sandstone, Minn.
- 167. M to Clear - Novelty Hatchet - Souvenir of Swift Falls, Minn.
- 168. Red Flashed - Novelty Hatchet - Souvenir of ?? Iowa
- 169. M - Fenton Floral and Grape JIP Whimsey Vase from Tumbler - Souvenir of Rinelund(?), Minn.
- 170. PO - Westmoreland Estate Creamer - Souvenir of South Omaha
- 171. M - Westmoreland Estate Sugar
- 172. M - Cuspidor - Mkd. Souvenir Worthington, Minn.
- 173. M - Little Banded Grape Creamer
- 174. M - Split Diamonds Creamer
- 175. Aqua Opal - N Tri-Corner Whimsey Ruffled Rib Cuspidor - An Odd Beauty!
- 176. Olive - N Concave Diamonds 6" Stretch Vase
- 177. M - 4 oz. Imp. Smooth Rays Claret
- 178. M - 2 oz. Imp. Smooth Rays Wines - Choice A, B, C, D or E
- 179. M - Spiral Diamond Point and Fan 6" Vase
- 180. M - Interior Drape 13" Tall Martini Tankard and 6 Stems - Great Set
- 181. P - Dugan Stork In Rushes 2 Sides Up Hat From Tumbler
- 182. M Flashed - 3-1/2" Tall Ball Jelly Jar
- 183. M - Fenton Miniature Blackberry Compote - Great Detail - Minor Base Nick
- 184. Rare Amber - Fenton Small Rib Stemmed Spittoon Whimsey
- 185. A - Mlbg. Nesting Swan 6 Ruffle Bowl
- 186. P - N Grape and Cable Small Punch Bowl Base
- 187. P - N Grape and Cable Mid-Size Punch Bowl Base
- 188. Smoke - Imp. 5" Mini Morning Glory Vase - Dark and Luscious
- 189. Rich Amber - Westmoreland Pearly Dots Compote
- 190. Sapphire - Dugan 9-1/2" Big Basketweave Vase - Rare
- 191. Sapphire - Dugan 9-3/4" Big Basketweave Vase - Rare
- 192. B - Fenton Ribbon Tie 9", 3 in 1, Low Ruffled Plate - A Beauty
- 193. W - Fenton Peacock at Urn 9-1/4" Plate - Lovely Blues & Pinks
- 194. Deep B - Fenton Holly 8-7/8" ICS Bowl - Strong Iridescence
- 195. B - Fenton Orange Tree Sherbet - Scarce Little Beauty
- 196. Yellow Vas. - Fenton 8-3/4", 8 Ruffle, Collar Base Dragon and Lotus Bowl
- 197. M - Fenton Stag and Holly Ftd. Fruit Bowl - Hot Pinks
- 198. G - N Good Luck 8-3/4", 8 Ruffle Bowl - BW Ext. - Very Nice Example
- 199. P - N Round Bushel Basket - Prime Piece
- 200. M - Imp. Pansy Oval Pickle Dish
- 201. M - N Wishbone 8-1/4", 8 Ruffle, Ftd. Bowl - Nice Finish
- 202. Deep A - N Strawberry PCE Bowl - BW Ext. - Full of Great Irid.
- 203. A - Mlbg. 6" Peacock Plate - 1-3/8" Off Table
- 204. AO - N Peacocks Ruffled Bowl - Always In Demand - Rib Ext.
- 205. Deep B - N Peacocks PCE Bowl - Rib Ext. - Eye Opening Electric Gem


- _____ 206. Rare G - N Peacocks 9" Ruffled Bowl - Rib Ext.
 _____ 207. G - N PCE Peacocks Bowl - Scarce BW Ext.
 _____ 208. Rich M - N Peacocks 9" Plate - Loaded with Pinks
 _____ 209. Rare Renniger Blue - N Stippled Peacocks Plate - Rib
 Ext. - Thin Base
 _____ 210. B - N Peacocks 9", Ruffled Bowl - Rib Ext. - Greens, Reds
 and Golds
 _____ 211. P - N Peacocks 9", Ruffled Bowl - Rib Ext. - Multi Elec.
 Blues and Purples
 _____ 212. Deep P - N Peacocks PCE Bowl - Rib Ext. - Neat Base
 Color
 _____ 213. Scarce M - Dugan Four Flowers Rd., Deep 8" Nut Bowl -
 Soda Gold Ext. - Good Color
 _____ 214. M - Fenton Cherry Circles 7-1/2" Lg. 2 Handled Bonbon
 - Beautiful Irid.
 _____ 215. Amber - Imp. Pansy Oval, Ruffled Relish Dish - Loaded
 with Irid.
 _____ 216. Rich M - Imp. 8-1/2" Parlor Panels Vase - 6" Flared
 Opening - Lots of Pinks
 _____ 217. M - Imp. Pansy Nappy - Colorful Interior
 _____ 218. PO - Dugan 6-1/2" Four Flowers Plate - 1" of Opal - Plain
 Ext.
 _____ 219. M - Imp. Signed IG Loganberry Vase - Super Example
 _____ 220. Scarce B - Sowerby Hen and Chicks Covered Oval Dish
 _____ 221. M - Tree Bark 8-3/4" Tall Tankard Water Pitcher
 _____ 222. Very Scarce G - Fenton Holly Little Ruffled Compote -
 Pretty!
 _____ 223. Vas. - Fenton Holly Goblet Shape Compote - M. Overlay
 _____ 224. B - Fenton Holly Ruffled Compote - 5" Top
 _____ 225. B - Fenton Holly Ruffled Compote - 4-3/8" Top
 _____ 226. Brick Red - Fenton Holly 9", 8 Ruffle Bowl
 _____ 227. Awesome G - Fenton Holly 9", 8 Ruffle Bowl - Loaded
 with Blues, Greens, Fuschias
 _____ 228. Light B - Fenton Holly 9", 8 Ruffle Bowl - Pink and Blue
 Highlights
 _____ 229. Lav. Base - Fenton Holly 9", 8 Ruffle Bowl - Scarce Base
 Color
 _____ 230. Rich M - Fenton Holly 9", 8 Ruffle Bowl - Near Pumpkin
 _____ 231. A - Fenton Holly 8-1/2", 3 in 1 Crimp Bowl - Scarce Shape
 and Color
 _____ 232. Powder B - Fenton Holly 9-1/4", Low 3 in 1 Crimp Bowl
 _____ 233. Vas. Fenton Holly 6-3/4", 2 Sides Up Hat - Very Nice
 Marigold Overlay
 _____ 234. B - Fenton Holly 10" Plate - Super Size, Superb Color
 _____ 235. Beautiful Aqua - Fenton Grape and Cable 7-1/2", Sq. 8
 Ruffle, Collar Base Bowl - Excellent Color
 _____ 236. Dark Amber - Fenton Grape and Cable 7-1/2", Ruffled
 Bowl - Great Example
 _____ 237. Powder B Tint - Fenton Grape and Cable, Ball Ftd.,
 Ruffled Bowl
 _____ 238. BA - Fenton 5-3/4", 2 Row, O.E. Basket - 2 Sides Up
 _____ 239. Powder B - Fenton 7", Ruffled 2 Row, O.E. Blackberry
 Basket
 _____ 240. Sapphire Base - Fenton 5-1/4", Ruffled 2 Row, O.E.
 Basket
 _____ 241. Sapphire Base - Fenton 6-1/2" Ruffled 2 Row, O.E.
 Blackberry Basket
 _____ 242. Vas. - Fenton 7-1/2", Sq. 8 Ruffle Acorn Bowl - Very Nice
 _____ 243. Powder B - Fenton 6-1/4" Rd. Acorn Bowl - 1-3/4" Deep -
 Unusual Size and Pretty
 _____ 244. Powder B - Fenton 8-3/4" Cherry Circles Bonbon - Scarce
 Color and Nice
 _____ 245. G - Fenton Persian Medallion 10", 6 Ruffle Bowl - Scarce
 and Beautiful
 _____ 246. A - Fenton Dragon and Lotus 8-3/4", 3 in 1 Edge Bowl -
 Astonishing Color on this Bowl
 _____ 247. Amber - Fenton Dragon and Lotus 8-1/2", 8 Ruffle Bowl
 _____ 248. Cobalt Blue - Fenton Dragon and Lotus 9", 8 Ruffled
 Low Bowl - Super Irid.
 _____ 249. Scarce B - Fenton Peacock Tail 7", 6 Ruffle Bowl
 _____ 250. W - Fenton Orange Tree 9-3/8" Plate - Drowning In Blues
 and Pinks
 _____ 251. M - Fenton Orange Tree Powder Jar and Lid
 _____ 252. Deep B - Fenton Orange Tree 8" ICS Bowl
 _____ 253. M - N Grape and Gothic Arches 8-1/2" Rd. Master Bowl
 and 4 Sm. Berry Bowls
 _____ 254. M - N Acorn Burrs 7 pc. Berry Set - Well Matched
 _____ 255. M - N Flute Table Set - Butter Dish, Sugar, Creamer,
 Spooner - Complete, Rare Set
 _____ 256. Elec. B - N Fruits and Flowers Stemmed Bonbon
 _____ 257. Lovely G - N Fruits and Flowers Stemmed Bonbon
 _____ 258. Dark M - N Fruits and Flowers Stemmed Bonbon
 _____ 259. P - N Fruits and Flowers Stemmed Bonbon
 _____ 260. P - N Tree Trunk 12-3/4" Mid-Size Funeral Vase - Plunger
 Base - 6" Opening - Rare Shape
 _____ 261. P - N Tree Trunk 13" Mid-Size Vase
 _____ 262. G - N Tree Trunk 12" Mid-Size Vase
 _____ 263. M - N Tree Trunk 13-1/2" Mid-Size Vase
 _____ 264. G - N Flute 15-1/2" Funeral Vase - Alaskan Effect - 6-3/4"
 Top
 _____ 265. P - N Tree Trunk 9-1/2" Vase
 _____ 266. M - N Tree Trunk 10-1/2" Vase
 _____ 267. P - N Thin Rib 10-3/4" Vase - Electric Irid.
 _____ 268. Uncommon W - N Thin Rib 11" Vase - Frosty
 _____ 269. Rare M - N Thin Rib Jester's Cap 7-3/4" Vase
 _____ 270. Rare B - N Four Pillars 6-1/2" Squatty Interior Rib Vase
 - Toes Chipped
 _____ 271. Sapphire - N 10-3/4" Fine Rib Vase - Also A Rare One
 _____ 272. Fantastic P - N 8-1/2" Thin Rib Vase
 _____ 273. Lav. - N Diamond Point 10-1/2" Vase - Scarce Color and
 Lovely
 _____ 274. A - N 8-Sided Bushel Basket
 _____ 275. M - N 8-Sided Bushel Basket - Nice Color
 _____ 276. W - N 8-Sided Bushel Basket - Frosty
 _____ 277. W - N Round Bushel Basket
 _____ 278. Lav. - N Round Bushel Basket - Scarce Base Color
 _____ 279. Ice G - N Round Bushel Basket
 _____ 280. M - N Round Bushel Basket
 _____ 281. P - N Grape and Cable Hatpin Holder
 _____ 282. B - Fenton Orange Tree Hatpin Holder - Normal Foot
 Roughness
 _____ 283. Emerald Green - N 7-1/4", 6 Ruffle Grape and Cable Leaf
 Center Bowl
 _____ 284. Rare W - N Grape and Cable Bonbon - Top Notch!
 _____ 285. Elec. B - N Grape and Cable Bonbon
 _____ 286. Rich M - N Grape and Cable Bonbon
 _____ 287. A - N Grape and Cable Bonbon
 _____ 288. M - N Paneled Holly Bonbon
 _____ 289. M - N Grape and Cable Tri-Corner Whimsey Pin Dish
 From Punch Cup
 _____ 290. P - Dugan 7", Ruffled Holly and Berry Bowl - Stupendous
 Color!
 _____ 291. A - Mlbg. 5-1/2" Rd., Flared Peacocks Bowl
 _____ 292. M - Mlbg. 7", 6 Ruffle Grape Wreath Bowl - Feathered
 Leaf Center - Radium
 _____ 293. Beautiful Radium A - Mlbg. 8-1/4", 6 Ruffle Grape
 Wreath Bowl - Multi Star Center
 _____ 294. Emerald G - Mlbg. 6-1/2", Low 6 Ruffle Blackberry
 Wreath Bowl
 _____ 295. Radium M - Mlbg. 5-3/4", Tight Crimp, 3 in 1 Edge
 Grape Wreath Bowl - Clover and Feather Center
 _____ 296. A - Mlbg. 7-1/4" 3 in 1 Ruffled Holly Sprig Bowl - Great
 Example
 _____ 297. A - Mlbg. 7-1/2" ICS Holly Sprig Bowl - Outstanding
 Scarce Beauty



- _____ 298. A - Mlbg. Holly Sprig Tri-Corner Nappy
 _____ 299. Scarce M - Mlbg. Leaf and Little Flowers Rd., Flared Compote
 _____ 300. Rare Radium M - Mlbg. Night Stars 2 Sides Up Deep Bonbon
 _____ 301. A - Mlbg. 9-1/2" Rd., Flared Peacocks Master Bowl - Radium w/Color and Detail
 _____ 302. M - Mlbg. 10" ICS Hanging Cherries Bowl - Multi-Color Satin Finish
 _____ 303. A - Mlbg. 9-3/4", 6 Ruffle Many Stars Bowl - Six Point Star In Center - Radium
 _____ 304. B - Fenton 9-3/4" Ball Ftd. Persian Medallion/Grape and Cable Ext. Orange Bowl - Colorful
 _____ 305. G - Fenton 9-3/4" Ball Ftd. Grape and Cable 8 Ruffle Orange Bowl - Scarce Plain Int.
 _____ 306. Rare Rich A - Fenton 9" Rd., Ftd. Butterfly and Berry Master Bowl - Fantastic Example
 _____ 307. Scarce B - Fenton Large 8 Ruffle Mikado Compote
 _____ 308. A - Fenton 9-3/4", 3 in 1, 10 Mums Bowl - Always In Demand
 _____ 309. B - Fenton 9-3/4", 3 in 1, 10 Mums Bowl - Scarce and Nice
 _____ 310. A - Fenton 8-3/8" Tight Crimp, CRE 10 Mums Bowl - Great Example
 _____ 311. B - Fenton 10", Sq. 8 Ruffle Cherry Chain Bowl - Orange Tree Ext. - A Nice One
 _____ 312. Rare Lime Vas. - Fenton Horse Medallion Ball Ftd. Rosebowl - Base Heat Flash
 _____ 313. M - Fenton Horse Medallion Nut Bowl
 _____ 314. G - Fenton 7-1/2" Vintage (Grape) Plate - Unusual Size
 _____ 315. Stunning M - Fenton 9-1/2" Peacock At Urn Plate - Fantastic Blues and Pinks
 _____ 316. Rich Clambroth - Fenton 9-1/2" Leaf Chain Plate - Great Clambroth Example
 _____ 317. Rare Florentine Stretch Ice G - Dugan 8-1/2", 10 Ruffle Pony Bowl - Glows!
 _____ 318. Rev. Amberina Opal - Fenton 6", 6 Ruffle, Ball ftd. Water Lily Bowl - Difficult to Find
 _____ 319. Vas. - Fenton 6", 6 Ruffle, Ball Ftd. Water Lily Bowl - Marigold Overlay
 _____ 320. Lime Vas. - Fenton Blackberry Spray 6", 6 Ruffle Hat - Has Only Two Sets of Berries
 _____ 321. Lime Vas. - Fenton Stippled Ray Stemmed, 2 Handled Compote
 _____ 322. Lime Vas. - Fenton Peacock and Dahlia 6-1/2", ICS Bowl - Scarce Shape
 _____ 323. Florentine Ice G Vas. - Fenton 9-1/4", 8 Ruffle Three Row Open Edge Bowl
 _____ 324. Florentine Ice G w/Cobalt Handles - Fenton Stretch Creamer & Sugar (Plate 253)
 _____ 325. Red Amberina - Fenton Stippled Rays 6-3/4", 6 Ruffle Bowl - Scale Band Ext.
 _____ 326. Red Amberina - Fenton Blackberry Spray 6-1/2", 6 Ruffle Hat
 _____ 327. Rare Aqua - Fenton Stippled Rays 5-1/2" Round Bowl - Plain Ext.
 _____ 328. M - Fenton Rose Spray 6 Ruffle Compote - Lots of Color for This Item
 _____ 329. G - N Strawberry 9" Plate - BW Ext. - Nice Find in Green
 _____ 330. Pastel M - N Strawberry 8-3/4" Plate - Smooth Ext.
 _____ 331. P - N Strawberry 8-3/4", 8 Ruffle Bowl - Smooth Ext. - Way Above Average
 _____ 332. Scarce G - N Strawberry PCE Bowl - BW Ext. Lots of Green Irid.
 _____ 333. G - N Strawberry 8-3/4", 8 Ruffle Bowl - BW Ext.
 _____ 334. Super Nile G - N Three Fruits 8-3/4", 8 Ruffle Bowl - BW Ext. - Great Emerald Highlights
 _____ 335. G - N Good Luck Ruffled Bowl - BW Ext. - Nice Find
 _____ 336. M - N Good Luck Vt. Ruffled Bowl - BW Ext. - Pink Look To Glass
 _____ 337. B - N Good Luck PCE Bowl - Rib Ext. - Beautiful Electric Hues
 _____ 338. M - N Three Fruits 8-3/4", 8 Ruffle, Stippled Bowl - Rib Ext. - No Wear On This One
 _____ 339. P - N Greek Key 9", 8 Ruffle Bowl - BW Ext - Interesting Pattern
 _____ 340. M - N Grape Leaves 9", 8 Ruffle Bowl - Beautifully Iridized
 _____ 341. P - N Nippon 8-3/4", 8 Ruffle Bowl - BW Ext. - Above Average Example
 _____ 342. Ice B - N Nippon PCE Bowl - Rib Ext. - Blue and Pink Irid.
 _____ 343. P - N Leaf Beads 7-3/4" Tri-Corner Ftd. Bowl - Sunflower Design On Int.
 _____ 344. Rare AO - N Lead Beads Nut Bowl - Pink Marigold Overlay
 _____ 345. B - N Leaf Beads Rosebowl - Scarce Base Color
 _____ 346. M - N Leaf Beads Rosebowl - Sunflower Design On Int.
 _____ 347. AO - N Drapery Rosebowl - Beautiful Example
 _____ 348. M - N Beaded Cable Rosebowl - Smooth Ray Int. - Top Notch Example
 _____ 349. M - N Grape & Cable 10-1/2", 8 Ruffle Large Berry Bowl - BW Ext. - Pinks & Blues
 _____ 350. W - U.S. Glass Palm Beach 8" Master Bowl w/6 Sm. Berry Bowls - Pieces Match Well, Very Rare Set
 _____ 351. M - Fenton Lotus and Grape Vt. 6-1/4" Ball Ftd. Bowl
 _____ 352. M - Fenton 6-1/2", ICS Leaf Chain Bowl
 _____ 353. Honey Amber - U.S. Glass Cosmos and Cane 7-3/4" Rd. Master Berry Bowl
 _____ 354. A - Westmoreland Pearly Dots Ruffled Compote
 _____ 355. Electric B - Fenton Garland Rosebowl
 _____ 356. M - Fenton Cherry Chain 6-1/2" Plate - Orange Tree Ext.
 _____ 357. A - Dugan Honeycomb 7-1/2", CRE Plate - Multi-Color Irid.
 _____ 358. W - Dugan Fishscale and Beads 7-3/4" Flat Plate - Unusual Size
 _____ 359. A - Dugan Persian Garden 6-5/8" Plate - BW Ext. - Harder to Find Every Year
 _____ 360. BO - Westmoreland 8-3/4" Corinth Bowl/Plate? - 2" Syndrome!
 _____ 361. BO - Westmoreland Scales 7-3/4" ICS Bowl - Undervalued Item
 _____ 362. MMG - Westmoreland Scales 8-3/4", 6 Ruffle Bowl - Also Underrated
 _____ 363. G - Cambridge Inverted Strawberry 6-1/2" ICS Bowl - Radium Emerald Finish
 _____ 364. M - Fenton Three Fruits 8-1/2", 6 Ruffle Bowl - Nice As It Can Be!
 _____ 365. B - Fenton Fantail 8-1/2" Rd., Ftd. Bowl - Butterfly and Berry Ext.
 _____ 366. Cobalt B - Fenton Dragon and Lotus 9", Sq. 8 Ruffle Bowl - Superlatives Fail!!
 _____ 367. Dark Amber - Fenton Grape and Cable 7-1/2", Sq. 8 Ruffle Bowl
 _____ 368. M - Brockwitz Moonprint Open Sugar - Radium and Nice
 _____ 369. PO - Dugan Ski Star and Compass 8-3/4" Tri-Corner, CRE Bowl - Tough to Find
 _____ 370. PO - Dugan Ski Star and Compass 10-3/4", 6 Ruffle Bowl
 _____ 371. Lime - Westmoreland Louisa Ftd. Rosebowl - Radium Silver Finish
 _____ 372. M - U.S. Glass Paneled Smocking Creamer - Quite Scarce

- _____ 373. M - Birds and Grades Wall Pocket Vase - Interesting Pattern
- _____ 374. G - Westmoreland Strutting Peacock Creamer and Sugar w/Lids!
- _____ 375. Rare M - Fenton Good Luck/Heart and Vine Ruffled Bowl - Minor Rim Flaw
- _____ 376. P - Westmoreland Leaf Swirl Ruffled Compote
- _____ 377. Florentine Vas. Ice G - Fenton Sherbet and Underplate Set - Gorgeous Stretch (Plate 189)
- _____ 378. Vas. Stretch - Fenton 6" Octagonal Plate - Glows The Best! (Plate 194)
- _____ 379. Celeste Blue Stretch - Fenton 7" Card Tray - Super Example of Stretch
- _____ 380. M - Six Crackle Berry Bowls - 6 x \$
- _____ 381. W Stretch - Chesterfield 6-1/2" Dia., 6-1/2" Tall Compote - Base Rim Flake
- _____ 382. W - Imp. Stretch 6-3/8" Salad Plate - Iron Cross Mark
- _____ 383. M - Fenton 8" Laurel Plates 4 x \$ - Fantastic Color
- _____ 384. Tangerine Stretch - Fenton 11-1/2" Wide Flared, Rolled Rim Bowl - Rare Color
- _____ 385. Red Stretch - 5-3/4" Tall, 5 Ruffle Vase - 8" Opening - Polished Pontil
- _____ 386. Red Stretch - 7" Tall Vase - 5" Ruffled Opening - Polished Pontil
- _____ 387. Blue Stretch - 7" Tall Vase - 5" Ruffled Opening - Polished Pontil
- _____ 388. G - Mlbg. Hobnail Vt. 16-1/2" Vase - or Rustic Vt.?
- _____ 389. P - Imp. Morning Glory 12-1/2" Funeral Vase - 4-3/4" Multi Star Base, 9-1/4" Opening - Open Bubble on Tip
- _____ 390. P - Imp. Morning Glory 17-1/4" Funeral Vase - 7-1/4" Opening, Multi-Star Vase
- _____ 391. Fantastic Vas. - Fenton Fine Rib 17" Mid-Size Vase - 5" Tulip Top.
- _____ 392. Scarce Lime - Fenton Fine Rib 10-1/2" Vase - Alaskan Effect - Base Glows
- _____ 393. Powder G - Fenton Fine Rib 10" Vase
- _____ 394. Sapphire - Fenton Fine Rib 9-3/4" Vase

- _____ 395. Dark Teal - Fenton Fine Rib 10-1/4" Vase - Base Does Glow - Great Example
- _____ 396. Amberina - Fenton Rustic 8" Vase - Not Iridized
- _____ 397. B - Fenton April Showers 12" Vase - Pinks and Blues
- _____ 398. W - Dugan Lined Lattice 9-1/4" Vase - Loads of Pastel Irid.
- _____ 399. Marigold with Opal Tips - Dugan Lined Lattice 9-1/2" Vase
- _____ 400. P.O. - Dugan Pulled Loop 10-1/2" Vase - Opal Top to Bottom
- _____ 401. Electric B - Dugan Pulled Loop 11" Vase - Rare Color
- _____ 402. B - Dugan Spiralex 11" Vase - Neat Base Color
- _____ 403. P - Dugan 10-1/4" Target Vase - Loaded with Irid.
- _____ 404. M - 10-1/2" Finely Ribbed Vase - Starred 3-3/4" Base - Pattern, Maker?
- _____ 405. M - Dugan 9" Big Basketweave Vase
- _____ 406. W - Dugan Squatty Big Basketweave 4-3/4" Vase - Very Nice
- _____ 407. P - Dugan Squatty Big Basketweave 3-1/2" Vase - 6-1/2", 8 Ruffle Opening - Fully Electric
- _____ 408. Rare Lav. - Dugan 8" Beauty Bud Vase - Marigold Overlay On Top

 Additional 60+ pieces which we have not catalogued. These ARE NOT damaged or low end pieces—we just couldn't fit all the print on the Auction Bill. Stay for these and be surprised and pleased!

SPECIAL NOTE:

NO SUNDAY CALLS, PLEASE!

Winning Absentee Bidders will be contacted Monday through Wednesday of the week following the Auction!

Thank You!


For Free Color Catalogs & Information Write:

Mickey Reichel

516 Third Street, Boonville, MO 65233-1536

or Call: 660-882-5292 days or

660-882-5283 evenings

 E-mail: mreichel@undata.com

NEED QUALITY CARNIVAL GLASS

*"We don't want all the Business,
Just Yours."*

WE DO AUCTIONS RIGHT!!

2003 CALENDAR

March 15, 2003

COLLECTION CARNIVAL GLASS
at Boonville, Mo. Auction Gallery

April 12, 2003

WOODSLAND WORLD WIDE CARNIVAL
GLASS ASSOCIATION CONVENTION
GIANT FLORIDA COLLECTION
at St. Louis, Missouri

May 24, 2003

CARNIVAL GLASS AUCTION
ILLINOIS COLLECTOR
at Boonville, Mo. Auction Gallery

June 21, 2003

CARNIVAL GLASS COLLECTION
at Boonville, Mo. Auction Gallery

October 17-18, 2003

18TH AIR CAPITAL
CARNIVAL GLASS CONVENTION
at Wichita, Kansas

