

AUCTION

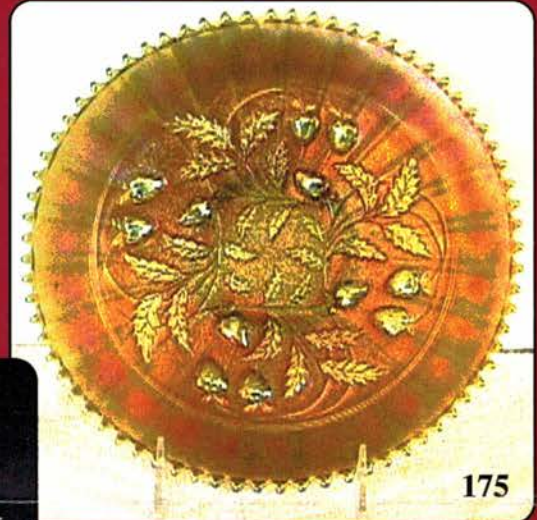
Texas Carnival Glass Club Convention

Saturday, February 15, 2003

9:30 A.M.



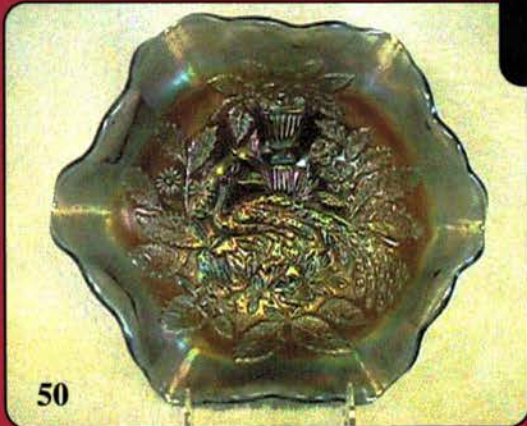
265



175



150



50



275

Crowne Plaza Hotel
Dallas, Texas

7800 Alpha Road (Coit Rd & LBJ 635 Expressway North)

Reservations: 1-972-233-7600

Jim and Jan Seeck

Seeck Auctions

Texas Auction License #10758

641-424-1116

SATURDAY, FEBRUARY 15th, 2003 -- 9:30 A.M.
Crowne Plaza Hotel - Dallas, Texas
NO BUYER'S PREMIUM
Harold & Shirley Vest Collection

Don't forget to check out our website for many color pictures of this auction.
www.seeckauction.com

For **Texas Club Information** contact Matzi Thrasher: (281)351-2202. Make your reservations soon! (972)233-7600. Mention the club for a special rate. \$99/suite/breakfast for 2/social reception. Cut off date for special discounted rate is February 2, 2003.

Texas Club Website: <http://www.texascarnivalglass.org>

8.25% Sales Tax will be charged. Please bring your sales tax number with you.

ABSENTEE BID POLICY

1. Write-in bids will be accepted by sending the numbers of the item(s) desired and the amount bid on each to:
Seeck Auctions, PO Box 377, Mason City, Iowa 50402.
2. If known by Auction Company, bids may be done over the telephone. (641)424-1116.
3. You may **email** your bids to us: **jimjan@seeckauction.com** Continue to include the numbers of the item(s) you would like to bid on and amount bid on each, please include your telephone number.
4. There is a \$5 handling charge for each successful bid. Shipping and insurance charges are additional.
5. Bidders will be notified by phone if their bid(s) are successful. This call will be made 1 - 3 days after the auction.
6. Please have all bids in by **Mon., Feb 10th**. All bids (by mail, phone or **email**) after this date **and time** may not be carried out.
7. Please place bids in the following increments: \$1 to \$300 - \$5 increments \$300 up - \$25 increments.
8. **If you do not receive an item that sold for less than your bid, assume we cancelled your bid because the piece of glass had below average color, manufacture problem, damage or was not listed correctly.**
9. Auction results are posted on our website 1 - 3 days after the auction depending on drive time home from the sale. Also, results are available in many of the club newsletters.

WEBSITE: <http://www.seeckauction.com>

----- **TEXAS CARNIVAL GLASS CLUB -- Feb. 13th - 16th CONVENTION 2003 Registration Form** -----
 PLEASE PRINT CLEARLY

Date _____
 First Name _____ Spouse _____ Last Name _____
 Address: _____
 City/State/Zip: _____
 Phone: _____ E-mail: _____

Registration Fee	\$5.00/10.00 (after Feb 1, 2003)
Membership Dues (\$20 USA \$25 Outside USA)	\$ _____
Thursday Members' Pizza Party	\$ FREE number attending ____
Friday "Whitley Award" Luncheon (\$25.00 ea)	\$ _____ number attending ____
Saturday Members' Buffet Banquet (\$25.00 ea)	\$ _____ number attending ____
*Participating in the Room Shop Hop _____ Yes or No (details on web site and Ranger)	
TOTAL AMOUNT PAID (remember registration fee)	\$ _____

Make Checks Payable To: Texas Carnival Glass Club

Please mail this form to: Matzi Thrasher, 611 W. Main Street, Tomball, Texas 77375-5500 Phone: 281-351-2202

- ___ 1. Sailboats ruffled compote - marigold
- ___ 2. Wreath of Roses ruffled compote - green
- ___ 3. Florentine lg size candlesticks - marigold
- ___ 4. Grape Delight ftd nut bowl - blue
- ___ 5. Imperial Grape deep round bowl - marigold
- ___ 6. April Showers 10" vase - green
- ___ 7. N's Beads ruffled bowl - green
- ___ 8. Luster Flute creamer & sugar - green
- ___ 9. Pansy pickle dish - marigold
- ___ **10. Thumbprint & Ovals vase - purple - super irid., extremely rare & desirable, a dandy little vase**
- ___ 11. Holly ruffled compote - green
- ___ 12. Holly ruffled compote - lime green - has no marigold overlay
- ___ 13. Holly ruffled compote - aqua - has marigold overlay
- ___ 14. Holly ruffled compote - blue
- ___ 15. Holly ruffled compote - green depression - not carnival
- ___ **16. Panelled Dandelion 7 pc. tankard water set - amethyst - very nice set**
- ___ 17. Two Flowers ftd ruffled sauce - amethyst - pretty
- ___ **18. Mikado ruffled compote - marigold - dark & nice**
- ___ 19. Orange Tree goblet - blue - nice
- ___ **20. Fanciful 9" plate - purple - spectacular, what everyone is looking for**
- ___ 21. Imperial Grape 7 pc. wine set - marigold - nice
- ___ 22. Imperial Grape 8 pc. wine set - green
- ___ 23. Peach spooner - white - nice
- ___ 24. Beaded Cable rosebowl w/rayed interior - amethyst
- ___ **25. Greek Key 9" plate w/ribbed back - marigold - super pretty, very scarce**
- ___ **26. Greek Key 9" plate w/BW back - green - another super plate, scarce**
- ___ 27. Beaded Bullseye vases 12" & 10 1/2" - marigold - choice
- ___ 28. Beaded Bullseye 9" vase - green
- ___ **29. Beaded Bullseye 6" squatty vase - purple - fantastic, has 6" mouth**
- ___ **30. Pinecone 7 1/2" plate - amber - extremely rare color w/pretty irid.**
- ___ **31. Pinecone 7 1/2" plate - blue - scarce**
- ___ 32. Iris ruffled compote - blue - scarce color
- ___ 33. Iris ruffled compote - amethyst
- ___ 34. Grape Delight ftd rosebowl - purple - heat check in base
- ___ **35. Dugan's Cherries 9 1/2" ruffled bowl - purple - beautiful color!**
- ___ **36. Pinecone 6" plate - amethyst - flat as a pancake**
- ___ 37. Pinecone 6" plate - marigold - nice
- ___ 38. Luster Rose deep round ftd fruit bowl - clambroth - chip on back edge
- ___ 39. Luster Rose fernery - marigold
- ___ **40. Poppy Show 9" plate - ice blue - very scarce & highly desirable**
- ___ **41. Poppy Show 9" plate - marigold - super plate w/pretty even irid., minor nick on poppy**
- ___ **42. Poppy Show 9" plate - blue - very rare desirable plate**
- ___ **43. Poppy Show 9" plate - white - flat for these & pretty**
- ___ 44. Thistle 3 in 1 edge bowl - green
- ___ **45. Fenton's Peacock at Urn 9" plate - blue - scarce & nice**
- ___ **46. Fenton's Peacock at Urn 9" plate - white - pretty, scarce**
- ___ **47. Fenton's Peacock at Urn 9" plate - marigold - nice**
- ___ 48. Captive Rose ruffled bowl - blue
- ___ 49. MaryAnn vase - amethyst - nice example
- ___ **50. M'burg Peacock at Urn 10" ruffled bowl - blue - super rare & highly desirable, nice**
- ___ 51. Scroll Embossed ruffled compote - marigold
- ___ **52. Vintage 6" plate - amethyst - very scarce plate**
- ___ **53. Vintage 6" plate - marigold - scarce, pretty**
- ___ 54. Cathedral chalice - marigold - pretty
- ___ **55. M'burg Trout & Fly ruffled bowl - marigold - radium & nice, very rare in radium**
- ___ 56. Persian Medallion 6" plate - amethyst - very scarce, has gold irid.
- ___ **57. Persian Medallion 6" plate - blue - fantastic irid.**
- ___ 58. Persian Medallion 6" plate - marigold - dark & super
- ___ 59. Louisa ftd rosebowl - amethyst
- ___ **60. Garden Path Variant large ruffled bowl - purple - fantastic example of this rare piece**
- ___ 61. Question Mark bon bon - purple - open bubble on base
- ___ 62. Horse Medallion ftd JIP bowl - marigold
- ___ 63. Persian Garden 6" plate - white - has Pool of Pearls back
- ___ 64. Persian Garden 6" plate - marigold

- ___ 65. **Apple Blossom Twigs 9" plate - peach opal - pretty example w/nice opal**
- ___ 66. Apple Blossom Twigs 9" plate - blue - scarce color, a little silvery
- ___ 67. Apple Blossom Twigs 9" plate - white - pretty
- ___ 68. Puzzle bon bon - blue - hard color to find
- ___ 69. Holly crimped edge ruffled compote - marigold - scarce edge
- ___ 70. **Grape & Cable water pitcher - purple - very nice**
- ___ 71. Grape & Cable tumblers (2) - purple - choice
- ___ 72. **Two Fruits divided bon bon - green - kinda scarce color**
- ___ 73. Birds & Cherries ruffled compote - green
- ___ 74. Morning Glory 11" JIP vase - marigold
- ___ 75. **Holly ruffled bowl - blue opal - super, super example w/great opal, has minor nick on edge**
- ___ 76. M'burg Grape Wreath 6" 3 in 1 edge bowl - amethyst - radium & nice
- ___ 77. Fenton's Peacock at Urn ruffled compote - marigold
- ___ 78. Leaf Chain 7" plate - marigold - nice
- ___ 78A. **Miniature Morning Glory 6" vase - purple - super irid.!**
- ___ 79. Miniature Morning Glory 5" vases (2) - marigold - choice
- ___ 80. **Wishbone ftd ruffled bowl - green - emerald & fantastic, this thing is a beauty!**
- ___ 81. **Wishbone ftd ruffled bowl - marigold - pumpkin & fantastic**
- ___ 82. Wishbone ftd ruffled bowl - purple - edge chip
- ___ 83. Stippled Rays 6" plate - marigold
- ___ 84. Fruits & Flowers small ruffled berry bowl - amethyst
- ___ 85. **Stippled Peacocks 9" plate w/ribbed back - marigold - super pretty**
- ___ 86. Butterfly bon bon w/plain back - amethyst
- ___ 87. Double Stemmed Rose dome ftd deep round bowl - marigold
- ___ 88. Grape & Cable Variant ruffled bowl w/plain back - green - pretty
- ___ 89. Daisy & Plume ftd rosebowl - green
- ___ 90. **Dragon & Lotus ruffled bowl - red - fantastic example w/cherry color & red irid., minor buffing on one point**
- ___ 91. Chrysanthemum large ftd deep ruffled bowl - marigold
- ___ 92. N's Grape Leaves 3 in 1 edge bowl - marigold
- ___ 93. **Pony 10 ruffled bowl - amethyst - very pretty example, flatter than most**
- ___ 94. Raspberry gravy boat - purple - foot chips
- ___ 95. **Luster Rose butterdish - purple - rare plus very pretty**
- ___ 96. **Luster Rose spooner - purple - scarce, also pretty**
- ___ 97. Luster Rose table set - marigold - complete & nice
- ___ 98. Butterflies bon bon - blue
- ___ 99. Smooth Rays ruffled bowl - blue opal
- ___ 100. **Parkersburg Elk 7" plate - blue - super pretty, rare**
- ___ 101. **Smooth Panels 7" vase - marigold on milkglass - has 7 1/2" wide mouth, neat**
- ___ 102. **Smooth Panels 5" vase - marigold on milkglass**
- ___ 103. Lovely tri-cornered ftd bowl - amethyst - rare, has chip on foot
- ___ 104. Wild Rose ftd ruffled bowl - green
- ___ 105. **Orange Tree 9" plate - blue - super pretty, scarce**
- ___ 106. Open Rose rosebowl - green
- ___ 107. **Little Beads miniature ftd plate - amethyst - very rare**
- ___ 108. Four Flowers 6" plate - peach opal - nice
- ___ 109. Coin Dot deep CRE bowl - amethyst
- ___ 110. **Hearts & Flowers ruffled compote - blue - scarce**
- ___ 111. **Hearts & Flowers ruffled compote - marigold - nice**
- ___ 112. Grape & Gothic Arches creamer & spooner - blue - choice
- ___ 113. Octagon small size water pitcher - marigold
- ___ 114. Fluffy Peacock tumbler - amethyst
- ___ 115. **Diamond Points 10 1/2" vase - aqua opal - lots of opal, nice vase**
- ___ 116. Diamond Points 9 1/2" vase - amethyst
- ___ 117. **Peacock & Grape ruffled bowl - blue - super**
- ___ 118. Windflower 9" plate - marigold - nice
- ___ 119. Smooth Rays crimped edge ruffled sauce w/Jeweled Heart back - peach opal
- ___ 120. **Holly 2 sides up hat - red - cherry, cherry red color, fantastic**
- ___ 121. Imperial Grape ruffled bowl - purple - nice
- ___ 122. **Imperial Grape ruffled bowl - smoke - dark color & nice**
- ___ 123. Imperial Grape low ruffled bowl - pastel marigold - pretty

- ___ 124. Vintage Banded mug - marigold
- ___ **125. Stippled Three Fruits 9" plate w/ribbed back - lavender - super irid., beautiful**
- ___ **126. Stippled Three Fruits 9" plate w/ribbed back - amethyst**
- ___ **127. Stippled Three Fruits 9" plate - marigold - dark & super nice**
- ___ **128. M'burg Strawberry ruffled compote - marigold - radium, scarce**
- ___ 129. Apple Blossoms ruffled bowl - marigold
- ___ **130. Stag & Holly lg ftd IC shaped bowl - blue - super**
- ___ 131. Open Rose deep round bowl - marigold
- ___ 132. Grape & Cable hatpin holder - purple - nice
- ___ 133. Orange Tree shaving mug - marigold
- ___ 134. N's Thin Rib 11" vase - green
- ___ **135. Hearts & Flowers ruffled bowl w/ribbed back - ice blue - nice**
- ___ 136. M'burg Boutonniere ruffled compote - amethyst - radium, super
- ___ **137. Finecut & Roses rosebowl - purple - as nice as I've ever seen**
- ___ 138. Finecut & Roses rosebowl - marigold - nice
- ___ 139. Holly JIP CRE hat - lime green - minor nick on base
- ___ **140. N's Bushel Basket - aqua opal - nice**
- ___ 141. N's Bushel Basket - blue
- ___ **142. M'burg Leaf & Little Flowers sherbert shaped compote - green - radium, nice**
- ___ 143. Fenton's Three Fruits 9" plate - green
- ___ 144. Fenton's Three Fruits 9" plate - amethyst
- ___ **145. Buzz Saw lg size cruet - green - scarce, has chips on rim in bottom & on top of stopper**
- ___ 146. Corinth IC shaped bowl - aqua - scarce
- ___ **147. Fenton's Grape & Cable Fruit Bowl w/Persian Medallion interior - amethyst - nice**
- ___ 148. Diamond Point Columns 10" vase - green
- ___ 149. Acorn Burrs tumbler - purple
- ___ **150. Stippled Grape & Cable 9" plate - sapphire - super pretty, very rare, WOW!**
- ___ 151. Miniature Morning Glory 7 1/2" vase - green
- ___ 152. Imperial Flute 11" vase - marigold
- ___ **153. Shell & Sand ruffled bowl - purple - super!**
- ___ 154. Grape & Cable whimsey pin dish made from punch cup - purple
- ___ **155. N's Corn vase w/plain base - marigold - scarce & desirable**
- ___ 156. Blackberry Bramble square shaped compote - blue - minor roughness on base
- ___ 157. Orange Tree ruffled bowl - blue - silvery
- ___ 158. Blackberry Spray ruffled hatshape - lime green opal - very pretty example, rare, minor nick on base
- ___ 159. Octet deep ruffled ftd bowl - amethyst
- ___ **160. Australian Swan master berry bowl - purple - pretty**
- ___ 161. Australian Swan master ruffled berry bowl - marigold
- ___ 162. Fenton's Ftd Fine Rib JIP vase - marigold
- ___ **163. Little Beads miniature ruffled compote - peach opal - never seen this color before!**
- ___ 164. Big Basketweave 9" vase - marigold
- ___ **165. N's Peacock at Urn master IC bowl - ice green - very scarce, pretty**
- ___ **166. File 3 1/2" whimsey vase - marigold - unusual**
- ___ **167. M'burg Rosalind 10" ruffled bowl - green - satin, nice**
- ___ 168. Persian Medallion crimped edge lg size ruffled compote - blue
- ___ 169. Bo Peep mug - marigold - scarce
- ___ **170. Peacocks 9" plate w/ribbed back - ice green - nice, minor pinpoint on point**
- ___ **171. Peacocks 9" plate w/ribbed back - green - very rare, back of one point chipped**
- ___ 172. Strawberry ruffled bowl w/BW back - green
- ___ 173. N's Peacock at Urn IC sauce - purple
- ___ 174. Pineapple ftd whimsey flat plate - amethyst - unusual
- ___ **175. Stippled Strawberry 9" plate w/ribbed back - green - very pretty example of this rare plate**
- ___ 176. Lined Lattice 9" vase - purple - pretty
- ___ **177. M'burg Leaf & Little Flowers ruffled compote - marigold - radium, nice**
- ___ 178. Holly goblet shaped compote - lime green w/marigold overlay
- ___ 179. Holly goblet shaped compote - marigold
- ___ **180. Dragon & Lotus IC shaped bowl - reverse amberina - very scarce color for these**
- ___ 181. Dragon & Lotus IC shaped bowl - marigold - pretty
- ___ 182. Grape & Cable powder jar - green - roughness on lid & base
- ___ 183. Two cards of Buttons - choice
- ___ 184. Scales 6" plate - aqua
- ___ **185. Apple Blossom Twigs 3 in 1 edge bowl - purple - fantastic!**
- ___ 186. Maple Leaf spooner - blue - chips
- ___ **187. Grape & Cable pintray - purple - nice**

- ___ **188. Lattice & Grape 7 pc. tankard water set - marigold - nice**
- ___ 189. Ripple 8" vase - purple - 2 1/2" base, pretty
- ___ **190. Captive Rose 9" plate - marigold - very pretty w/even irid., scarce**
- ___ 191. Grape & Gothic Arches tumbler - marigold
- ___ **192. Fishscale & Beads 7" plate - purple - super beautiful**
- ___ 193. Singing Birds water pitcher - green - beautiful but cracked
- ___ 194. M'burg Grape Wreath Variant ruffled sauce - green - radium
- ___ **195. Stippled Three Fruits ruffled bowl w/ribbed back - green - rare color, chip on base**
- ___ 196. Imperial Grape ruffled compote - purple
- ___ 197. Imperial Grape ruffled compote - green
- ___ 198. Basketweave Open Edge ruffled hat - aqua
- ___ 199. Basketweave Open Edge ruffled hat - marigold
- ___ **200. Poppy Show ruffled bowl - ice green - very nice example of this rare bowl**
- ___ 201. Open Rose ruffled bowl - amber - base chip
- ___ 202. Grape & Cable Variant 9" plate w/BW back - green - nice
- ___ **203. Grape & Cable 11" ruffled bowl - purple - pretty**
- ___ 204. Fenton's Panels 12" vase - blue
- ___ **205. Tree Trunk 13" vase - blue - very pretty example, desirable**
- ___ 206. Scroll Embossed ruffled bowl w/File back - purple - pretty
- ___ 207. Holly 9" plate - marigold
- ___ 208. Kittens 2 sides up dish w/2 sets of kittens - marigold - nice
- ___ 209. Kittens toothpick - marigold
- ___ **210. Acorn ruffled bowl - red - scarce & desirable**
- ___ 211. Poinsettia milk pitcher - marigold
- ___ **212. Open Rose 9" plate - amber - nice**
- ___ 213. Three Fruits 9" plate w/BW back - purple
- ___ 214. Three Fruits 9" plate w/BW back - green
- ___ **215. Coral 9" plate - marigold - very pretty example for this rare plate**
- ___ 216. Australian Kookaburra master berry bowl - marigold - nice
- ___ 217. Australian Magpie master berry bowl - marigold
- ___ **218. Drapery rosebowl - aqua opal - scarce, nice**
- ___ 219. Stork & Rushes mug - marigold
- ___ **220. Petal & Fan large ruffled bowl - purple - pretty, scarce**
- ___ 221. Folding Fan crimped edge compote - peach opal
- ___ 222. Basketweave Open Edge 2 sides up hat - blue
- ___ **223. Kittens 4 sides up dish - blue - scarce, nice**
- ___ 224. Knotted Beads crimped edge 10" vase - blue
- ___ **225. M'burg Many Stars IC shaped bowl - green - radium, a fantastic scarce bowl, has 6 point star**
- ___ 226. Stippled Singing Birds mug - marigold - nice
- ___ 227. Apple Blossom Twigs ruffled bowl - peach opal
- ___ 228. Grape & Cable 7" handgrip plate - marigold - scarce
- ___ 229. Pepper Plant square shaped hat - blue - nick on base
- ___ 230. Fruits & Flowers bon bon - ice blue - pretty example, scarce
- ___ **231. Octagon 6 pc. wine set - marigold**
- ___ **232. Zippered Loop lamp - marigold - 7 1/2" high, 4 3/4" base - scarce**
- ___ **233. Four Flowers chop plate - purple - extremely rare, silver irid.**
- ___ 234. 1 Card & 1 Bag of Buttons - choice
- ___ **235. Boarder Plant 3 in 1 edge dome ftd bowl - purple - spectacular**
- ___ 236. Stag & Holly lg size IC shaped ftd bowl - marigold - nice
- ___ **237. Palm Beach 4" whimsey vase - marigold - neat**
- ___ 238. Good Luck ruffled bowl w/ribbed back - marigold - nice
- ___ 239. Cherry Chain 6" plate - marigold - dark
- ___ **240. Windmill dresser tray - purple - super pretty, rare piece**
- ___ 241. Sunflower & Diamond 9 1/2" vase - marigold
- ___ **242. Horse Medallion 7" plate - marigold - a beauty**
- ___ 243. Stippled Rays 6" ruffled bowl - red - scarce
- ___ 244. Stippled Rays 6" ruffled bowl - green
- ___ **245. Good Luck 9" plate w/BW back - marigold - scarce & nice**
- ___ **246. Basketweave Open Edge lg size 2 sides up basket - ice green - nice**
- ___ 247. Basketweave Open Edge square shaped basket - powder blue
- ___ **248. Australian Butterfly Bush IC shaped compote - purple - pretty**
- ___ 249. Sailboats ruffled sauce - marigold
- ___ **250. Loganberry vase - amber - rare color, nice**
- ___ 251. Pansy ruffled bowl - marigold
- ___ **252. Pinecone 6" saucer shaped plate - green - very pretty**
- ___ 253. Beaded Purse - dark
- ___ 254. Pair of Necklaces - dark

- ___ **255. Peacocks ruffled bowl w/ribbed back - blue - scarce & desirable**
- ___ 256. M'burg Strawberry Wreath crimped edge 8" bowl - marigold - radium
- ___ **257. Three Row Open Edge square shaped basket - white - scarce**
- ___ **258. Basketweave Open Edge 2 sides up basket - ice blue - very flat & pretty**
- ___ 259. Australian Shrike ruffled sauce - purple
- ___ **260. Fanciful ruffled bowl - purple - nice**
- ___ 261. Star Medallion 10" plate - marigold
- ___ 262. Beaded Purse - amethyst colors
- ___ 263. Pair of belts
- ___ 264. Stork Vase made into a lamp & Grape & Cable punch bowl base - marigold - choice
- ___ **265. Persian Garden large IC shaped bowl - purple - fantastic, very rare bowl**
- ___ 266. Lattice & Daisy ruffled hat - marigold
- ___ **267. Scroll Embossed 9" plate - purple - very pretty**
- ___ 268. Hen on Nest - marigold
- ___ **269. Orange Tree loving cup - blue**
- ___ 270. Windflower IC shaped bowl - marigold
- ___ 271. Strawberry 9" plate w/BW back - marigold
- ___ **272. Amarylis miniature compote - purple - almost a plate**
- ___ 273. Grape & Cable cologne bottle - purple
- ___ 274. Dugan's Cherries ftd ruffled bowl - amethyst
- ___ **275. Rose Show 9" plate - purple - very pretty example for these**
- ___ 276. Blackberry miniature compote - blue
- ___ 277. Nippon PCE bowl w/ribbed back - ice blue - scarce, nice
- ___ 278. Rococco vase - marigold
- ___ 279. Singing Birds mug - purple
- ___ 280. M'burg Nesting Swan ruffled bowl - amethyst - satin, has minor nicks on edge
- ___ 281. Stippled Rays card tray shaped bon bon - green
- ___ **282. Garden Path Variant 6" plate - white - very scarce & nice**
- ___ 283. Rustic 12" mid-size vase - green
- ___ 284. Constellation ruffled compote - white - pretty
- ___ **285. Stippled Grape & Cable Variant 9" plate w/ribbed back - green - super pretty, scarce, minor nick on point**
- ___ 286. Heart & Vine CRE bowl - green
- ___ 287. Grape & Cable tobacco humidior - purple - two large nicks under top rim of base
- ___ 288. Soda Gold salt & peppers - smoke
- ___ 289. Butterflies, Scarab & Top of the Morning Hatpins & two buttons - choice
- ___ **290. Sailboats 6" plate - marigold - scarce**
- ___ 291. Smooth Rays 10" bowl - green
- ___ 292. N's Eight Sided bushel basket - purple - scarce
- ___ 293. Robin mug - marigold
- ___ 294. Leaf & Beads rosebowl - blue - pretty
- ___ **295. Wishbone & Spades 6" plate - purple - very nice**
- ___ 296. Leaf Rays nappy - marigold
- ___ 297. Finecut & Roses candy dish - white - normal feet
- ___ 298. Grape & Cable 9" plate w/spt feet - purple
- ___ 299. Diamond Point Column 16" vase - amethyst
- ___ **300. Hattie chop plate - marigold - super pretty, a real dandy**
- ___ 301. Ftd small shell - green
- ___ 302. Honeycomb ruffled compote - marigold
- ___ **303. Harvest Poppy ruffled compote - marigold - very nice**
- ___ 304. Fishscale tri-cornered crimped edge dish - purple
- ___ 305. M'burg Peacock Tail Variant ruffled compote - green - satin
- ___ 306. Grape & Cable punch cups (8) - purple - choice
- ___ 307. Twigs 8 1/2" vase - marigold
- ___ 308. Panther ruffled sauce - blue
- ___ 309. Propeller compote - marigold
- ___ 310. Fruits & Flowers 7" plate - marigold
- ___ 311. Luster Flute ruffled sauce - green
- ___ 312. Maple Leaf indiv. berry dish - marigold
- ___ **313. Peacock & Grape 9" plate - marigold - one of the best, fantastic, dark & super**
- ___ 314. Two pieces of Carnival Glass - both damaged
- ___ 315. 14 Lots of Carnival Glass - choice
- ___ 316. Several Pieces of Carnival Glass - choice
- ___ 317. Several Pieces of Carnival Glass - choice
- ___ 318. Several Pieces of Carnival Glass - choice
- ___ 319. Several Pieces of Carnival Glass - choice
- ___ 320. Several Pieces of Carnival Glass - choice
- ___ 321. Several Pieces of Carnival Glass - choice
- ___ 322. Several Pieces of Carnival Glass - choice
- ___ 323. Several Pieces of Carnival Glass - choice
- ___ 324. Several Pieces of Carnival Glass - choice
- ___ 325. Several Pieces of Carnival Glass - choice
- (Check our website for listings of these choice lots)

Seeck Auctions

P.O. Box 377
Mason City, Iowa 50402

PRESORTED
FIRST-CLASS MAIL
U.S. POSTAGE PAID
MINNEAPOLIS, MN
PERMIT NO.28534



*****AUTO**MIXED AADC 553

Lee Markley
PO Box 306
Mentone, IN 46539-0306

