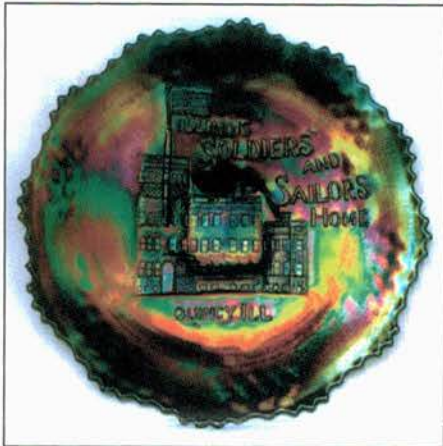


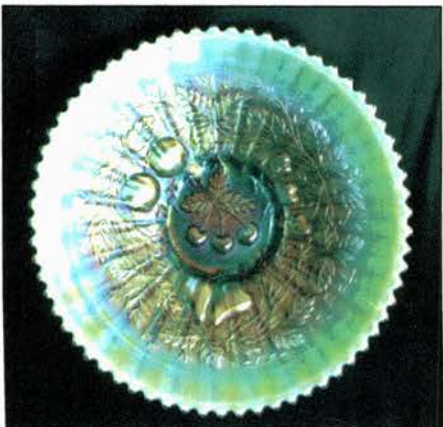
Lot #240



Lot #235



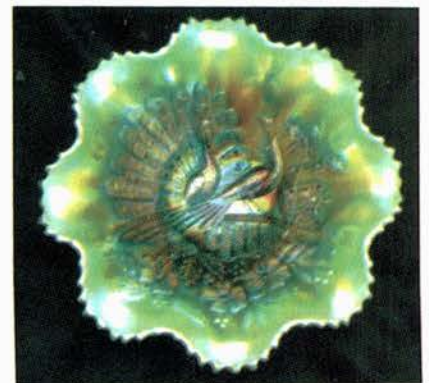
Lot #200



Lot #95



Lot #140



Lot #26

BURNS

AUCTION SERVICE

2003 Sunshine State Carnival Glass Association Convention Auction

9:00 a.m., Saturday
February 1, 2003

Friday: Preview 6:00 pm
Saturday: Preview 7:00 am

at the

Howard Johnson Resort Hotel

2096 Northeast Second St.

Deerfield Beach 33441

*Exit 37 off I-95 - Hillsboro Blvd., East to A1A, turn Left (north)
around bend to right - Resort ahead on right*

Toll Free (800) 426-0084

Bill Richards, Auctioneer • FL Lic. No. AU-0001621

This is one word I love looking forward to saying - FLORIDA! Yep, it's that time of year when I just wanna get to when the sun DOES shine! Time for the annual S.S.C.G.A. Convention, which takes January 29 through February 2. The convention will be held at the same location as last year's - the Howard Johnson Resort Hotel in Deerfield Beach, Florida.

This year's auction will be a dandy - featuring the collection of Jerry and Doris Rissmiller of Pennsylvania. For the past few years, Jerry and Doris had decided to start buying not only scarce and rare items, but ATTRACTIVE scarce and rare items. The end result being a collection of very desirable items, most with really nice color. They asked last year for the chance to sell it down south and so... here we are!

The Howard Johnson Resort Hotel is fairly easy to find - just take exit 37 off I-95 (Hillsboro Blvd.) and head east to the Beachside; go north on A1A and it's straight ahead after the first right hand turn. For reservations call (800) 426-0084. Rates will increase after Jan. 1.

The convention is always top-notch. The members and the board are a great bunch of people and they'll give you the red carpet treatment. Just the idea of being in Florida should convince any doubters to attend.

For further information on the convention call Jackie Poucher at (727) 398-1866, or John & Loretta Nielsen at (772) 287-1443. Mail Bids due by Thursday, Jan. 30, 2003.

Burns Auction Service

Tom Burns
P.O. Box 608
Bath, New York 14810
(607) 776-7942 Cell: 731-9302

Bill Richards
44 Water Street, Poland OH 44514
(330) 757-2001
FAX (330) 757-4917

Bill Richards III
2253 Country Lane
Poland, OH 44514
(330) 755-2620

Mail Bids honored under the following conditions:

1. No deposit required. Bidders will take full responsibility to honor any and all bids we execute for them. Payment in full plus postage and handling required after notification and before we ship any item to them.
2. Items are bid on in perfect condition with average or above average iridescence OR as listed in the brochures. Bids will not be carried out when damage on an item has been found during the auction. **PEOPLE PRESENT AT THE AUCTION ARE RESPONSIBLE FOR FINDING ANY PINHEADS, WEAR, SPOTTINESS, MANUFACTURER'S DEFECTS OR ANY OTHER MINOR FLAWS, ETC.**
3. Successful bidders will be notified by collect call from the auctioneer **SO BE SURE TO INCLUDE PHONE NUMBER.**
4. Phone inquiries about the glass or any other questions are welcome.
5. If you have some other person at the auction bidding for you, they must pay for the item before taking it.
6. Any terms or conditions given the day of the auction will supersede any previously published information.
7. Mail, e-mail, fax and phone bids are due by January 30, 2003

Visit our website at: <http://www.woodsland.com/burnsauction/>

- | | |
|---|---|
| <p><u>105</u> 1. N Singing Birds Handled Mug - Elec. Blue (super color and irid.; great example)</p> <p><u>20</u> 2. N Singing Birds Tumbler - Dk. Mari. (super color and irid.)</p> <p><u>145</u> 3. N SINGING BIRDS COVERED BUTTER DISH - DK. MARI. (ACTUALLY QUITE A RARE ITEM WITH GREAT COLOR)</p> <p><u>185</u> 4. N Peacock at the Fountain Master Berry Bowl - Pur. (scarce item with great color and irid.)</p> <p><u>575</u> 5. N PEACOCK AT THE FOUNTAIN STEMMED RUFFLED COMPOTE - PUR. (RARE AND DESIRABLE; NICE IRID. AND COLOR)</p> <p><u>475</u> 6. N PEACOCK AT THE FOUNTAIN LG. FTD. RUFFLED FRUIT BOWL - BLUE (RARE AND DESIRABLE WITH GREAT COLOR AND MULTI-COLORED IRID.)</p> <p><u>350</u> 7. N Peacock at the Fountain Lg. Ftd. Ruffled Fruit Bowl - Amy. (another scarce and very desirable item with a great multi-colored satiny finish)</p> <p><u>750</u> 8. N PEACOCK AT THE FOUNTAIN 8 PC. RUFFLED PUNCH SET - DK. MARI. (VERY SCARCE AND DESIRABLE SET; NICE AND DARK; ONE CUP HAS TINY CHIP ON MOLD LINE)</p> <p><u>500</u> 9. N PEACOCK AT THE URN LG. ICE CREAM BOWL - BLUE (RARE AND DESIRABLE WITH EXCELLENT MULTI-COLORED IRID.)</p> <p><u>725</u> 10. N Peacock at the Urn Lg. Ice Cream Bowl - Pur. (very scarce with really nice irid.)</p> <p><u>950</u> 11. N PEACOCK AT THE URN LG. ICE CREAM BOWL - ICE GREEN (RARE AND DESIRABLE WITH BRIGHT IRID. AND GREAT BASE COLOR)</p> <p><u>400</u> 12. N PEACOCK AT THE URN LG. ICE CREAM BOWL - ICE BLUE (RARE AND VERY DESIRABLE; NICE IRID. - HAS 2 SMALL DINGS IN PATTERN)</p> <p><u>650</u> 13. N PEACOCK AT THE URN LG. ICE CREAM BOWL - WHITE (VERY SCARCE AND DESIRABLE WITH BEAUTIFUL IRID.)</p> <p><u>375</u> 14. N PEACOCK AT THE URN ALL OVER STIPPLED LG. ICE CREAM BOWL - PASTEL MARI. (A VERY SCARCE COLORED ITEM WITH GREAT IRID.)</p> <p><u>1400</u> 15. N PEACOCK AT THE URN IND. ICE CREAM BOWL - EMERALD GREEN (VERY RARE AND VERY DESIRABLE; HAS BRIGHT COLOR AND WONDERFUL IRID.)</p> <p><u>225</u> 16. N PEACOCK AT THE URN IND. ICE CREAM BOWL - ELEC. BLUE (SCARCE; SUPER IRID. - REALLY NICE)</p> <p><u>155</u> 17. N Peacock at the Urn ind. Ice Cream Bowl - Blue / Elec. Blue (another nice example with blue highlights)</p> <p>18. N Peacock at the Urn ind. Ice Cream Bowl - Blue (scarce; nice color)</p> | <p><u>375</u> 19. N PEACOCK AT THE URN IND. ICE CREAM BOWL - ICE GREEN (RARE ITEM; EXCELLENT EXAMPLE WITH GREAT IRID.)</p> <p><u>175</u> 20. N PEACOCK AT THE URN IND. ICE CREAM BOWL - ICE BLUE (SCARCE AND VERY DESIRABLE WITH GREAT IRID.)</p> <p><u>215</u> 21. N Peacock at the Urn ind. Ice Cream Bowl - Dk. Mari. (super example)</p> <p><u>1200</u> 22. N PEACOCKS BOWL WITH P.C.E. AND RIBBED EXT. - LIME ICE GREEN (RARE AND VERY DESIRABLE; SUPER IRID. AND BASE COLOR)</p> <p><u>125</u> 23. N Peacocks Bowl with P.C.E. and Ribbed Ext. - Pur. (scarce with great irid.; has chip on one point)</p> <p><u>190</u> 24. N Peacocks Bowl with P.C.E. and Ribbed Ext. - Dk. Mari. (very scarce and a super example)</p> <p><u>125</u> 25. N Peacocks Bowl with P.C.E. and Ribbed Ext. - Pastel Mari. (scarce with nice irid.; has check formed by sponge in the glass)</p> <p><u>1600</u> 26. N PEACOCKS RUFFLED BOWL WITH RIBBED EXT. - AQUA OPAL. (A SUPER PASTEL EXAMPLE WITH WONDERFUL OPAL. AND IRID.)</p> <p><u>950</u> 27. N PEACOCKS RUFFLED BOWL WITH RIBBED EXT. - AQUA / MARI. (A VERY RARE BASE COLOR WITH A GREAT BUTTER-SCOTCH OVERLAY)</p> <p><u>475</u> 28. N Peacocks Ruffled Bowl with Ribbed Ext. - Pur. (very scarce with nice color and irid.)</p> <p><u>650</u> 29. N PEACOCKS STIPPLED PLATE WITH RIBBED EXT. - MARI. (VERY SCARCE VARIATION WITH REALLY NICE IRID.)</p> <p><u>325</u> 30. N PEACOCKS PLATE WITH PLAIN EXT. - ICE GREEN (VERY SCARCE WITH GREAT COLOR AND EXCELLENT IRID.)</p> <p><u>300</u> 31. N PEACOCKS PLATE WITH RIBBED EXT. - WHITE (VERY SCARCE WITH REALLY NICE IRID.)</p> <p><u>275</u> 32. N Peacocks Plate with Ribbed Ext. - Mari. (very scarce with really nice irid.)</p> <p><u>650</u> 33. N TORNADO SMALL SIZE TRI-CORNERED VASE - PUR. (RARE AND DESIRABLE WITH GREAT IRID.)</p> <p><u>485</u> 34. N Tornado Ribbed Tri-Cornered Vase - Lt. Amy./Lavender (rare item in a rare color; damaged base)</p> <p><u>650</u> 35. N HEART AND FLOWERS FLARED PLATE WITH RIBBED EXT. MARI. (RARE AND VERY DESIRABLE WITH SUPER COLOR AND IRID.)</p> <p><u>1200</u> 36. N HEART AND FLOWERS RUFFLED BOWL WITH RIBBED EXT. - ELEC. BLUE (ANOTHER REALLY NICE EXAMPLE WITH GREAT IRID.)</p> |
|---|---|

437. N HEART AND FLOWERS RUFFLED BOWL WITH RIBBED EXT. - PUR. (ANOTHER REALLY NICE EXAMPLE WITH GREAT IRID.) 115 73.
38. N HEART AND FLOWERS RUFFLED BOWL WITH RIBBED EXT. - DK. DK. MARI. (ANOTHER SUPER EXAMPLE; ABOUT THE BEST I'VE SEEN) 115 74.
39. N Heart and Flowers Ruffled Bowl with Ribbed Ext. - Ice Blue (very scarce and desirable with nice color and irid.) 80 75.
40. N Heart and Flowers Ruffled Bowl with Ribbed Ext. - White (very scarce and desirable; nice irid.) 110 75A.
41. N HEART AND FLOWERS BOWL WITH P.C.E. AND RIBBED EXT. - WHITE (RARE SHAPE IN ANY COLOR; NICE IRID.; - A TOUGHIE) 95 76.
- 300 42. N HEART AND FLOWERS STEMMED RUFFLED COMPOTE WITH RIBBED EXT. - GREEN (VERY RARE AND DESIRABLE; GREAT COLOR AND IRID.) 55 77.
- 525 43. N HEART AND FLOWERS STEMMED RUFFLED COMPOTE WITH RIBBED EXT. - AQUA OPAL. (RARE AND VERY DESIRABLE WITH GREAT COLOR AND OPAL.) 255 78.
- 395 44. N HEART AND FLOWERS STEMMED RUFFLED COMPOTE WITH RIBBED EXT. - AQUA OPAL. (ANOTHER NICE PASTEL EXAMPLE) 27 79.
- 205 45. N Heart and Flowers Stemmed Ruffled Compote with Ribbed Ext. - Dk. Mari. (scarce with great color and irid.; nice) 300 80.
- 185 46. N HEART AND FLOWERS STEMMED RUFFLED COMPOTE WITH RIBBED EXT. - MARI. / PASTEL MARI. (A SCARCE VARIATION WITH SUPER IRID.) 70 81.
- 500 47. N EMBROIDERED MUMS RUFFLED BOWL WITH RIBBED EXT. - LAVENDER (ABSOLUTELY FANTASTIC EXAMPLE; SUPER! HAS TINY FLAKE ON EDGE) 425 82.
- 225 48. N Embroidered Mums Ruffled Bowl with Ribbed Ext. - Blue (very scarce and desirable with average irid.) 45 83.
- 240 49. N HARVEST POPPY STEMMED RUFFLED COMPOTE - DK. MARI. (RARE ITEM WITH ABSOLUTELY SUPER COLOR AND IRID.) 100 84.
- 950 50. 13 1/4" TALL x 4 3/4" BASE N THIN RIB MID SIZE SWUNG VASE - SAPPHIRE (VERY RARE AND DESIRABLE; GREAT SIZE WITH GREAT COLOR AND IRID.) 100 84A.
- 250 51. 12 1/2" Tall x 4 3/4" Base N Thin Rib Mid Size Swung Vase - Green (scarce and desirable with really nice color) 1250 85.
- 45 52. 13" Tall x 4 3/4" Base N Thin Rib Mid Size Swung Vase - Jade Green (not carnival; quite scarce and desirable) 185 86.
- 700 53. 11 3/4" TALL N THIN RIB STANDARD SWUNG VASE - VASELINE (VERY RARE AND DESIRABLE ITEM; GREAT COLOR; SMALL CHIP ON BASE) 100 87.
- 150 54. 10" TALL N THIN RIB STANDARD SWUNG VASE - ICE GREEN (VERY SCARCE ITEM WITH NICE COLOR AND IRID.) 55 88.
- 425 55. 10 1/2" TALL N THIN RIB STANDARD SWUNG VASE - MARI. / SAPPHIRE (RARE AND DESIRABLE BASE COLOR; SUPER ITEM) 400 89.
- 105 56. 11" Tall N Thin Rib Standard Swung Vase - Blue (very scarce base color with nice irid.) 200 90.
- 50 57. 7 1/4" Tall N Thin Rib Squatty Swung Vase - Mari. (nice size; satiny) 85 91.
- 145 58. N Acorn Burr Handled Water Pitcher - Dk. Mari. (very scarce with great color; has check in handle) 165 92.
- 225 59. (5) N Acorn Burr Tumblers - Mari. (vary in color and irid.; selling choice) 75 93.
- 1500 60. N ACORN BURR 8 PC. PUNCH SET - PUR. (RARE AND DESIRABLE; A VERY ATTRACTIVE ITEM) 35 94.
- 2700 61. N ACORN BURR 8 PC. RUFFLED PUNCH SET - DK. MARI. (VERY RARE AND DESIRABLE SET WITH GREAT COLOR AND IRID.) 3100 95.
- 120 62. 9 1/2" Tall Imperial Ripple Standard Swung Vase - Pur. (super irid.) 2600 96.
- 110 63. 11 1/4" Tall Imperial Ripple Standard Swung Vase - Amber (scarce with nice color; has peeling on edge) 500 97.
- 165 64. 17" Tall x 5" Base Imperial Morning Glory Flared Funeral Vase - Mari. (very scarce; nice color; small chip on base) 1600 98.
- 1150 65. IMPERIAL BROKEN ARCHES 8 PC. PUNCH SET - PUR. (RARE AND DESIRABLE WITH NICE IRID.; MAY HAVE A COUPLE OF DINGS ON THE PATTERN) 275 99.
- 145 66. Imperial Grape Water Carafe - Pur. (very scarce with nice irid.) 525 100.
- 240 67. Imperial Grape Wine Decanter and Damaged Stopper - Smoke (rare color for this item; at least it has a stopper) 200 101.
- 435 68. IMPERIAL POINSETTIA HANDLED MILK PITCHER - SMOKE (RARE AND VERY DESIRABLE WITH SUPER IRID.) 215 102.
- 85 69. Imperial Poinsettia Handled Milk Pitcher - Dk. Mari. (super color and irid.) 130 103.
- 2100 70. SIGNED IMPERIAL NUART HOMESTEAD CHOP PLATE - AMBER (RARE AND DESIRABLE WITH SUPER IRID.; MAY HAVE A PIN-HEAD) 45 104.
- 650 71. 11 1/4" IMPERIAL HEAVY GRAPE CHOP PLATE - PUR. (RARE AND DESIRABLE; HAS SUPER COLOR AND IRID.)
- 370 72. 9 1/2" IMPERIAL EMBOSSED SCROLL FLAT PLATE - PUR. (VERY SCARCE WITH EXCELLENT COLOR AND IRID.)
- Imperial Pansy Flat Oval Dresser Tray - Pastel Mari. / Smoke (super irid.; quite an odd color)
- 6" Imperial Star and File Flat Plate - Mari. (very scarce item with nice color and irid.)
- 9 1/4" IMPERIAL SAND AND SHELL FLAT PLATE - MARI. (RARE & DESIRABLE; SUPER, SUPER IRID.)
- 5 - 6" IMPERIAL OPEN ROSE ROUND IND. BERRY BOWL - AMBERINA (VERY RARE COLOR FOR THIS ITEM; LOOKS LIKE A DARK MARIGOLD BUT DEFINITELY IS NOT - HOW MANY HAVE YOU SEEN?)
- 7 1/2" Imperial Shell and Sand 8 Ruffled Bowl - Pur. (scarce with super irid.)
- 9" Imperial Pansy 8 Ruffled Bowl - Pur. (really nice example)
- IMPERIAL HOBSTAR FLOWER STEMMED RUFFLED COMPOTE - VIOLET (RARE BASE COLOR WITH EXCELLENT IRID.)
- Imperial Embossed Scroll Stemmed Ruffled Compote - Dk. Mari. (super irid.)
- 8" TALL x 4 3/4" BASE IMPERIAL ZIPPER LOOP KEROSENE LAMP - MARI. (VERY SCARCE AND DESIRABLE ITEM WITH NICE IRID.)
- Imperial Windmill Handled Milk Pitcher - Mari. (nice color and detail)
- M'BURG MULTI FRUITS AND FLOWERS PUNCH BASE ONLY - AMY. (VERY SCARCE PART IF YA NEED IT; NICE)
- 7 1/2" M'burg Hanging Cherries 6 Ruffled Bowl - Amy. (nice satiny irid.)
- 7 1/2" M'burg Little Stars 6 Ruffled Bowl - Mari. (scarce with a nice satiny finish)
- 5 1/2 - 6" M'burg Grape Wreath (Variant) Crimped Edge Ind. Berry Bowl - Mari. (Radium irid.; has a desirable shape - a really cute item)
- M'BURG OHIO STAR VASE - GREEN (VERY RARE WITH EXCELLENT COLOR AND IRID.; HAS MANUF. CHECK IN BASE)
- 10" Tall M'burg Swirl Hobnail Swung Vase - Mari. (rare; nice color - has check in top edge and peeling)
- 9" M'burg Blackberry Wreath 6 Ruffled Bowl - Green (a very attractive radium example)
- 10" M'burg Primrose 6 Ruffled Bowl - Green (satiny irid. and nice - has a pinhead)
- 10 1/2" M'BURG SEAWEED LARGE BOWL WITH 3 IN 1 EDGE - MARI. (VERY SCARCE AND VERY DESIRABLE; HAS A GREAT SATINY FINISH)
- 8 1/4" M'BURG TROUT AND FLY ICE CREAM SHAPED BOWL - GREEN (RADIUM AND RARE; VERY ATTRACTIVE AND DESIRABLE)
- 9 1/2" M'burg Holly Whirl 6 Ruffled Bowl - Amy. (super radium example; nice)
- N Three Fruits Plate with Basketweave Ext. - Green (scarce item with a nice satiny irid.)
- N Three Fruits Bowl with P.C.E. and Basketweave Ext. - Green (scarce; nice color and irid.)
- N THREE FRUITS RUFFLED BOWL WITH PLAIN EXT. - PASTEL MARI. (SUPER IRID.; VERY ATTRACTIVE)
- N THREE FRUITS STIPPLED PLATE WITH RIBBED EXT. - AQUA OPAL. (VERY RARE AND VERY DESIRABLE; PASTEL IRID. - HAS A SMALL CHIP ON ONE POINT - MINOR HARM)
- N THREE FRUITS STIPPLED PLATE WITH RIBBED EXT. - SAPPHIRE (RARE AND DESIRABLE BASE COLOR WITH NICE IRID.)
- N THREE FRUITS STIPPLED PLATE WITH RIBBED EXT. - ELEC. PUR. (ABSOLUTELY SUPER ITEM WITH BRIGHT IRID.; HAS SOME WEAR ON THE FRUIT)
- N THREE FRUITS STIPPLED PLATE WITH RIBBED EXT. - ELEC. BLUE (RARE AND DESIRABLE WITH SUPER BLUE HIGHLIGHTS)
- N THREE FRUITS STIPPLED PLATE WITH RIBBED EXT. - DK. MARI. (VERY DESIRABLE ITEM; DARK WITH GREAT IRID.)
- N THREE FRUITS STIPPLED RUFFLED BOWL WITH RIBBED EXT. - ELEC. BLUE (RARE AND VERY DESIRABLE ITEM WITH GREAT IRID.)
- N THREE FRUITS STIPPLED RUFFLED BOWL WITH RIBBED EXT. - DK. MARI. (SUPER EXAMPLE; VERY DESIRABLE)
- N FRUIT AND FLOWERS STEMMED HANDLED BON BON - ELEC. BLUE (SCARCE WITH BRIGHT BLUE HIGHLIGHTS)
- N FRUIT AND FLOWERS STEMMED HANDLED BON BON - ELEC. PUR. (ANOTHER ITEM WITH SUPER IRID.; NICE)
- N Fruit and Flowers Stemmed Handled Bon Bon - Mari. (nice color and irid.)

- 100 105. N FRUIT AND FLOWERS STEMMED HANDLED BON BON - LT. AMY. / LAVENDER (ODD AND DESIRABLE BASE COLOR; NICE IRID.)
- 125 106. 11 1/2" Tall N Tree Trunk Standard Swung Vase - White (scarce item; frosty irid.)
- 75 107. N Tree Trunk Standard Swung Vase - Sapphire (rare color; nice - but has major manuf. damage)
- 55 108. N Tree Trunk Standard Swung Vase - Green (a beauty with reddish irid.; has small flake on sharp point)
- 35 109. N Tree Trunk Standard Swung Vase - Mari. (nice color and irid.)
- 000 110. 7" TALL N TREE TRUNK SQUATTY SWUNG VASE - BLUE (A CUTE ITEM WITH GREAT COLOR AND IRID.)
- 80 111. N G & C ftd. Hatpin Holder - Dk. Mari. (a beaut with great irid.; has flake on one foot)
- 100 112. N G & C Lg. Dresser Tray - Mari. (scarce with nice irid.)
- 250 113. 9" N G & C VARIANT PLATE WITH PLAIN EXT. - PASTEL MARI. (SUPER IRID.; ALMOST WANTS TO BE WHITE)
- 475 114. N G & C VARIANT STIPPLED PLATE WITH RIBBED EXT. - GREEN (RARE & DESIRABLE WITH NICE IRID.)
- 2700 115. N G & C 12 PC. BANQUET PUNCH SET - DK. MARI. (VERY RARE AND DESIRABLE SET; GREAT COLOR AND IRID.)
- 200 116. N G & C Flared Punch Bowl and Base - Dk. Mari. (a real beaut; base of bowl has a chip)
- 1500 117. N G & C FTD. CENTERPIECE BOWL - ICE BLUE (VERY RARE AND A SUPER EXAMPLE; NICE)
- 1200 118. N G & C FTD. RUFFLED SMALL SIZE FRUIT BOWL - ICE BLUE (ANOTHER RARE AND DESIRABLE LARGE ITEM)
- 650 119. N G & C FTD. RUFFLED LG. SIZE FRUIT BOWL - GREEN (RARE AND DESIRABLE ITEM; SUPER COLOR AND SIZE)
- 1700 120. N G & C STRAIGHT UP SIDES FTD. FRUIT BOWL - ICE GREEN (RARE AND REALLY NICE; GREAT COLOR AND IRID.)
- 145 121. N G & C ftd. Ruffled Small Size Fruit Bowl - Pur. (very scarce item with excellent irid.)
- 500 122. N G & C 2 PC. CANDLELAMP - MARI. (RARE AND DESIRABLE WITH TYPICAL SATINY IRID.)
- 1000 123. N G & C LG. STEMMED RUFFLED OPEN COMPOTE - PUR. (ABSOLUTELY SUPER COLOR AND IRID.; ONE OF THE BEST!)
- 750 124. N G & C BANDED STIPPLED LG. SIZE FTD. FRUIT BOWL - ELEC. BLUE (RARE ITEM WITH GREAT COLOR AND IRID.)
- 600 125. N G & C BANDED STIPPLED LG. SIZE FTD. FRUIT BOWL - ODD BLUE (ODD BASE COLOR - SORTA RENNINGER; NICE)
- 65 126. N G & C 2 Handled Bon Bon with Basketweave Ext. - Emerald Green (super color and irid.)
- 120 127. U.S. GLASS COSMOS AND CANE DOMED PUNCH BOWL SHAPED COMPOTE - WHITE (RARE AND UNUSUAL ITEM WITH GREAT IRID.)
- 105 128. U.S. Glass Cosmos and Cane domed 8 Ruffled Compote - White (another very scarce item with great irid.)
- 75 129. PHOENIX LACY DEWDROP LG. COVERED VEGETABLE BOWL - PEARLIZED MILK GLASS (VERY SCARCE ITEM WITH GREAT IRID.)
- 200 130. U.S. GLASS SLEWED HORSESHOE AND RADIANT DAISY 12 PC. BANQUET PUNCH SET - CRYSTAL / GREEN STAINED (NOT CARNIVAL, BUT VERY RARE AND UNUSUAL)
- 25 131. Westmoreland File and Fan Ice Cream Shaped Compote - Mari./Milk Glass (scarce with great color; has small flake on base)
- 30 132. 10 1/4" Tall Dugan Lined Lattice Swung Vase - Pur. (nice color and irid.; has epoxy on base)
- 155 133. Dugan Lined Lattice Swung Vase - Mari. with slight Opal. (odd item with super irid. and opal. on tips)
- 55 134. Dugan Lined Lattice Swung Vase - White (scarce with nice irid.)
- 1900 135. DUGAN PERSIAN GARDEN LG. ICE CREAM BOWL - PUR. (SUPER ITEM; RARE SHAPE WITH GREAT IRID.; ONE OF MY FAVORITES)
- ___ 136. 8 1/2" DUGAN ROUND UP ICE CREAM SHAPED BOWL - AMY. (ATTRACTIVE ITEM IN A NICE SHAPE)
- 150 137. 10 1/2" Dugan Petal and Fan Lg. 6 Ruffled Bowl with Jeweled Heart Ext. - White (very scarce; frosty with great irid.)
- 110 138. 10 3/4" Dugan Petal and Fan Lg. 8 Ruffled Bowl with Jeweled Heart Ext. - P. Opal. (scarce shape; nice color and opal.)
- 55 139. 11" Dugan Ribbed Interior Lg. 6 Ruffled Bowl with Jeweled Heart Ext. - P. Opal. (nice color and opal.)
- 1150 140. 10 1/2" DUGAN WISHBONE AND SPADES CHOP PLATE - PUR. (VERY RARE AND HAS SUPER IRID.; NICE AND FLAT)
- 135 141. Dugan Bellflower Tri-Cornered Crimped Edge Bowl - Pur. (desirable shape with great irid.)
- 185 142. 9 1/2" DUGAN CHERRIES 6 RUFFLED BOWL WITH JEWELLED HEART EXT. - PUR. (VERY SCARCE WITH GREAT IRID.; NICE)
- 50 143. 10 3/4" Dugan Ski Star Lg. 6 Ruffled Bowl with Compass Ext. - Pur. (scarce with great color; has chips on rim and base)
- 30 144. Dugan Stork and Rushes Tumbler with Beaded Top - Blue (nice satiny irid.)
- 550 145. DUGAN DOUBLE STEM ROSE DOMED 10 RUFFLED BOWL - CELESTE BLUE (RARE AND DESIRABLE; GREAT COLOR AND STRETCH EFFECT)
- 135 146. Dugan Double Stem Rose domed 10 Ruffled Bowl - White (flared and has excellent irid.)
- 25 147. Dugan Vining Twigs low 8 Ruffled Bowl / Hat - Pastel Mari. (super irid.)
- 120 148. Dugan Leaf Ray Handled Nappy - Mari. / Lime Green (odd base color with a mari. overlay)
- 200 149. N Raspberry ftd. Handled Gravy Boat - Amy. (really attractive; great base color and irid.)
- 750 150. N ORIENTAL POPPY TANKARD WATER PITCHER - ELEC. BLUE (DAMAGED - CRACKED AND GLUED - BUT A SUPER, SUPER SHELF ITEM)
- 900 151. N ORIENTAL POPPY 7 PC. TANKARD WATER PITCHER - GREEN (RARE AND DESIRABLE SET; WELL MATCHED AND NICE)
- 1100 152. N ORIENTAL POPPY 7 PC. TANKARD WATER PITCHER - PUR. (RARE SET WITH NICE COLOR AND IRID.; WELL MATCHED)
- 600 153. N ORIENTAL POPPY 7 PC. TANKARD WATER PITCHER - DK. MARI. (VERY DESIRABLE SET WITH EXCELLENT COLOR AND IRID.)
- 205 154. N RASPBERRY HANDLED MILK PITCHER - PUR. (SCARCE ITEM WITH SUPER IRID.; REALLY NICE)
- 2600 155. N GOOD LUCK RUFFLED BOWL WITH RIBBED EXT. - SAPPHIRE (RARE AND VERY DESIRABLE; GREAT BASE COLOR AND IRID.)
- 400 156. N GOOD LUCK RUFFLED BOWL WITH RIBBED EXT. - LAVENDER (VERY RARE AND DESIRABLE; GREAT BASE COLOR AND SUPER IRID.)
- ___ 157. N Good Luck Ruffled Bowl with Basketweave Ext. - Pur. (scarce with bronze irid.; chip on edge)
- 450 158. N GOOD LUCK BOWL WITH P.C.E. AND RIBBED EXT. - ELEC. BLUE (SUPER, SUPER IRID.; VERY ATTRACTIVE AND DESIRABLE)
- 235 159. N Good Luck Bowl with P.C.E. and Basketweave Ext. - Green (scarce item with nice color and irid.)
- 150 160. N Good Luck Bowl with P.C.E. and Ribbed Ext. - Mari. (scarce with really nice irid.)
- 175 161. N Grape and Gothic Arches Covered Sugar Bowl - Blue (very scarce table set item; nice irid.)
- 50 162. N Grape and Gothic Arches Handled Spooner - Blue (another scarce item with nice irid.)
- 350 163. N DRAPERY ROSE BOWL - ELEC. BLUE (RARE AND DESIRABLE ITEM WITH EXCELLENT IRID.)
- 350 164. N DRAPERY ROSE BOWL - AQUA OPAL. (VERY DESIRABLE WITH GREAT OPAL. AND IRID.)
- 700 165. N WISHBONE FTD. PLATE WITH RUFFLES AND RINGS EXT. - GREEN (VERY RARE ITEM IN THIS COLOR; GREAT IRID.; HAS SOME PIGMENT IN GLASS)
- 300 166. N WISHBONE FTD. PLATE WITH RUFFLES AND RINGS EXT. - AMY. (RARE AND NICE ITEM WITH A GREAT SATINY FINISH)
- 700 167. N WISHBONE FTD. PLATE WITH RUFFLES AND RINGS EXT. - PASTEL MARI. (SUPER IRID. AND A TOUGH ITEM TO FIND)
- 350 168. N WISHBONE FTD. RUFFLED BOWL WITH RUFFLES AND RINGS EXT. - EMERALD GREEN (SUPER IRID. ON THIS ITEM - A REAL KEEPER!)
- 650 169. N Wishbone ftd. Ruffled Bowl with Ruffles and Rings Ext. - Dk. Mari. (has to be one of the best I've seen)
- 500 170. N STRAWBERRY STIPPLED RUFFLED BOWL WITH RIBBED EXT. - ELEC. BLUE (RARE AND VERY DESIRABLE; SUPER HIGHLIGHTS; REALLY NICE)
- 175 171. N Strawberry Stippled Bowl with P.C.E. and Ribbed Ext. - Dk. Mari. (very scarce item with great color and irid.)
- 125 172. N Strawberry Plate with Plain Ext. - Dk. Mari. (scarce with super irid.; really nice)
- 200 173. N Strawberry Plate with Basketweave Ext. - Dk. Mari. (one of the better Basketweave examples)
- 85 174. N Strawberry Bowl with P.C.E. and Basketweave Ext. - Green (scarce with nice color and irid.)
- 1200 175. N ROSE SHOW FLARED PLATE - ELEC. BLUE (RARE ITEM WITH SUPER COLOR AND BRIGHT IRID.)
- 800 176. N ROSE SHOW FLARED PLATE - PUR. (RARE AND DESIRABLE WITH A NICE MULTI-COLORED IRID.)
- 550 177. N ROSE SHOW FLARED PLATE - MARI. (RARE AND DESIRABLE WITH NICE COLOR AND IRID.)
- 1300 178. N ROSE SHOW RUFFLED BOWL - ICE GREEN (VERY RARE AND NICE; HAS GREAT BASE COLOR AND IRID.)
- 950 179. N ROSE SHOW RUFFLED BOWL - AQUA OPAL. (RARE AND SUPER; PASTEL WITH GREAT OPAL. AND IRID.)

- 150 180. N Rose Show Ruffled Bowl - Blue Opal. (not carnival; has nice color and opal.)
- 650 181. **N POPPY SHOW FLARED PLATE - MARI. (RARE AND DESIRABLE WITH REALLY NICE IRID.)**
- 400 182. **N POPPY SHOW FLAT PLATE - WHITE (VERY SCARCE WITH EXCELLENT IRID.)**
- 225 183. **N NIPPON BOWL WITH P.C.E. AND BASKETWEAVE EXT. - WHITE (VERY SCARCE WITH NICE SHAPE AND IRID.)**
- 500 183A **N NIPPON BOWL WITH P.C.E. AND BASKETWEAVE EXT. - DK. MARI. (VERY SCARCE AND DESIRABLE ITEM WITH A DARK SATINY FINISH; A TOUGHIE)**
- 75 184. N Nippon Ruffled Bowl with Basketweave Ext. - Green (scarce and satiny; has a couple small dings on pattern)
- 650 185. **N DRAPERY VARIANT SWUNG VASE - ELEC. BLUE (SUPER ITEM WITH GREAT IRID.; ATTRACTIVE)**
- 125 186. **N RIBBED JACK IN THE PULPIT FTD. VASE - PUR. (VERY SCARCE WITH GREAT COLOR AND IRID.)**
- 140 187. **N RIBBED JACK IN THE PULPIT FTD. VASE - GREEN (VERY SCARCE WITH GREAT COLOR AND IRID.)**
- 100 188. **N RIBBED JACK IN PULPIT FTD. VASE - DK. MARI. (PROBABLY THE TOUGHEST COLOR; REALLY NICE)**
- 85 189. N Daisy and Plume / Fern Int. Stemmed Ruffled Compote - Green (super irid.; scarce)
- 100 190. N Leaf and Beads ftd. Flared Nut Bowl - Aqua Opal. (rare and desirable shape; has check in one foot)
- 250 191. N Leaf and Beads ftd. Rose Bowl - Aqua Opal. (very scarce and desirable with nice opal.)
- 400 192. **N LEAF AND BEADS FTD. ROSE BOWL - RENNINGER BLUE (RARE BASE COLOR WITH NICE IRID.; TOUGH!)**
- 75 193. N Beaded Cable ftd. Ruffled Rose Bowl - Dk. Mari. (really nice item; super example)
- 75 194. **N ROUND HANDLED BUSHEL BASKET - ELEC. BLUE (SUPER IRID.; VERY DESIRABLE)**
- 115 195. N Round Handled Bushel Basket - Elec. Blue (just like above item; really nice)
- 185 196. **N SPRINGTIME COVERED BUTTER DISH - DK. MARI. (VERY SCARCE AND HAS EXCELLENT COLOR AND IRID.)**
- 105 197. 8 3/4" Fenton Little Flowers Lg. Round Master Berry Bowl - Elec. Blue (very scarce with super bright irid.)
- 75 198. 5 1/4" Fenton Little Flowers small Round ind. Berry Bowl - Elec. Blue (a miniature of the above item; super!)
- 75 199. 6" Fenton Little Fishes ftd. 6 Ruffled Sauce - Mari. (scarce; nice color and detail)
- 200 200. **9 1/4" FENTON THISTLE FLAT PLATE - AMY. (VERY RARE AND VERY DESIRABLE; HAS A SATINY FINISH - A REALLY TOUGH ITEM)**
- 200 201. **9 3/4" FENTON HOLLY FLAT PLATE - BLUE (VERY SCARCE AND DESIRABLE WITH GREAT IRID.)**
- 130 202. 9 3/4" Fenton Holly Flat Plate - Mari. (scarce with nice color and irid.)
- 100 203. **8 1/2" FENTON HOLLY ICE CREAM SHAPED BOWL - RENNINGER BLUE (AN ODD ITEM THAT LOOKS LIKE RENNINGER BLUE)**
- 75 204. 9 1/4" Fenton Holly 8 Ruffled Bowl - Powder Blue / Mari. (very scarce base color with a Mari. overlay)
- 275 204A **10 - 11" FENTON TWO FLOWERS LG. BALL FTD. ICE CREAM SHAPED BOWL - POWDER BLUE / LT. MARI. (VERY RARE COLOR VARIATION FOR THIS ITEM; VERY ATTRACTIVE EXAMPLE WITH REALLY NICE IRID.)**
- 400 205. **FENTON ROSE WREATH PUNCH BOWL AND BASE WITH PLAIN INT. - AMY. (VERY DESIRABLE ITEM WITH SUPER IRID.; MAY HAVE A TINY FLAKE ON TIP OF ONE POINT)**
- 35 206. Fenton Rose Spray Stemmed Jack in Pulpit Compote - White (scarce and desirable item)
- 45 207. Fenton Blackberry Spray 6 Ruffled Hat - Mari. / Vaseline (scarce base color with a Mari. overlay)
- 80 208. Fenton Blackberry Spray Flat Crimped Edge Flared Hat - Green (rare shape in a scarce color; odd)
- 75 209. Fenton Blackberry Spray Crimped Edge Jack in Pulpit Hat - Blue (attractive item)
- 1300 210. **FENTON BLACKBERRY SPRAY CRIMPED EDGE JACK IN PULPIT HAT - AQUA OPAL. (VERY RARE ITEM IN A GREAT SHAPE; SUPER BASE COLOR AND OPAL.)**
- 125 211. **10 1/2" TALL FENTON FINE RIB STANDARD SWUNG VASE - SAPPHIRE (RARE COLOR FOR THIS ITEM; NICE)**
- 100 212. **9 3/4" TALL FENTON FINE RIB STANDARD SWUNG VASE - AQUA (ANOTHER RARE BASE COLOR; REALLY NICE)**
- 60 213. 9 1/2" Tall Fenton Fine Rib Standard Swung Vase - Aqua / Mari. (another scarce base color with a Mari. overlay)
- 214. 10 1/2" Tall Fenton Fine Rib Standard Swung Vase - Green (scarce base color; nice)
- 45 215. 9 3/4" Tall Fenton Fine Rib Standard Swung Vase - Mari. / Vaseline (scarce item; nice color; has chip on base)
- 25 216. 9 3/4" Tall Fenton Fine Rib Standard Swung Vase - Amy. (scarce base color; nice)
- 95 217. **9" TALL FENTON DIAMOND RIB STANDARD SWUNG VASE - WHITE (VERY SCARCE COLOR FOR THIS PATTERN; NICE)**
- 30 218. 10 1/4" Tall Fenton Wide Panel Swung Vase - Green (scarce; nice color)
- 37 1/2 219. 11" Tall Fenton Wide Panel Swung Vase - Blue (satiny irid.)
- 100 220. 18" Tall x 8" Wide x 5 1/4" Base Fenton Rustic Swung Funeral Vase - Mari. (very scarce and desirable; has check in body)
- 650 221. **FENTON paneled DANDELION TANKARD WATER PITCHER - GREEN (SUPER EXAMPLE WITH GREAT IRID.)**
- 45 222. Fenton Stream of Hearts Stemmed 8 Ruffled Compote - Mari. (scarce pattern)
- 85 223. **FENTON CHERRY CIRCLES ROUND HANDLED BON BON - AMY. (RARE AND DESIRABLE BASE COLOR WITH GREAT IRID.)**
- 30 224. Fenton Cherry Circles Round Handled Lg. Bon Bon - Mari. (really nice example)
- 600 225. **FENTON LOTUS AND GRAPE 2 SIDED 2 HANDLED CARD TRAY - RED (ONE OF THE BETTER EXAMPLES I'VE SEEN)**
- 95 226. Fenton Lotus and Grape 4 sided 2 Handled Bon Bon - Green (very scarce in this color; a really nice example)
- 45 227. **FENTON G & C LG. SIZE FTD. RUFFLED FRUIT BOWL WITH PLAIN INT. - AMY. (RARE SIZE; HAS A NICE BRIGHT SATINY FINISH)**
- 275 228. 9 1/2" Fenton Orange Tree Flat Plate - Blue (very scarce with nice color and irid.)
- 300 229. **9 1/2" FENTON LEAF CHAIN FLAT PLATE - DK. MARI. (VERY SCARCE AND VERY DESIRABLE WITH GREAT COLOR AND IRID.)**
- 550 230. **FENTON HOLLY 2 SIDED HAT - ELEC. RED (SUPER ITEM WITH BRIGHT IRID. - REALLY NICE)**
- 575 231. **8 3/4" FENTON HOLLY 8 RUFFLED BOWL - MARI. / MOONSTONE (RARE ITEM; ATTRACTIVE WITH A DARK OVERLAY)**
- 700 232. **8" FENTON PEACOCK AND GRAPE 8 RUFFLED SPATULA FTD. BOWL - RED (RARE AND UNDER PRICED ITEM THAT'S TOUGH TO FIND)**
- 200 233. **10" FENTON CHERRY CHAIN LG. BOWL WITH 3 IN 1 EDGE - GREEN (VERY RARE TO FIND IN THIS COLOR; ATTRACTIVE)**
- 225 234. 8 3/4" Fenton Autumn Acorn 8 Ruffled Bowl - Mari./Lime Green (very scarce item with great color and overlay)
- 200 235. **FENTON ILLINOIS SOLDIERS AND SAILORS HOME FLAT PLATE - BLUE (VERY RARE AND DESIRABLE; GREAT IRID. AND DETAIL)**
- 450 236. **6 1/2" FENTON SAILBOATS FLAT PLATE - BLUE (VERY DIFFICULT TO FIND IN THIS COLOR; HAS GREAT DETAIL)**
- 200 237. **6 1/2" FENTON LITTLE FLOWERS FLAT PLATE - MARI. (VERY SCARCE WITH NICE COLOR AND IRID.)**
- 238. 7 1/2" Fenton Vintage Grape Flat Plate - Mari. (very scarce with a nice satiny finish)
- 75 239. 6 1/2" Fenton Pine Cone Plate with Wide Panel Ext. - Mari. (scarce with nice color and irid.)
- 450 240. **FENTON HOLLY STEMMED 6 RUFFLED COMPOTE - RED (VERY DESIRABLE WITH GREAT COLOR AND IRID. - A SUPER EXAMPLE)**
- 550 241. **FENTON TWO ROW LARGE SIZE OPEN EDGE 2 SIDED HAT - DK. ICE BLUE (A SUPER EXAMPLE; VERY DESIRABLE WITH GREAT COLOR)**
- 650 242. **FENTON TWO ROW OPEN EDGE 2 SIDED HAT - REVERSE AMBERINA OPAL. (RARE AND VERY DESIRABLE WITH NICE COLOR AND OPAL. TIPS)**
- 225 243. Fenton Two Row Open Edge 2 sided Hat - Reverse Amberina Opal. (like above item only damaged)
- 244. Fenton Two Row Open Edge 2 sided Hat with John H. Brand Adv. - Lt. Mari. (scarce)
- 245. Fenton Two Row Open Edge 6 Ruffled Hat - Aqua (scarce base color)
- 75 246. Fenton Two Row Open Edge 6 Ruffled Hat - Ice Blue (nice but has a check)
- 247. Fenton Peacock at the Urn Stemmed 6 Ruffled Compote - Powder Blue / Mari. (very scarce base color with a nice overlay)
- 40 248. 11 1/2" Tall Fenton April Showers Swung Vase - Green (nice color)
- 25 249. Large Fenton Peacock Tail Bowl with 3 in 1 Edge - Mari.
- 275 250. Fenton Peacock Tail Stemmed 6 Ruffled Compote - Amy.
- 10 251. Fenton Stippled Rays Bowl with Tight Crimped Edge - Amy.



Lot #230



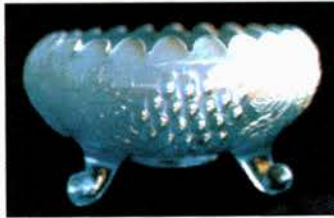
Lot #231



Lot #242



Lot #225



Lot #117



Lot #38



Lot #9



Lot #90



Lot #120

Burns Auction Service
P.O. Box 608
Bath, New York 14810

First Class
US Postage
PAID
Permit No. 7
Hammondsport, NY

*2003 Sunshine State
Carnival Glass Association
Convention Auction*



Lot #85

LEE MARKLEY
BOX 306
MENTONE IN 46539

46539-0306

