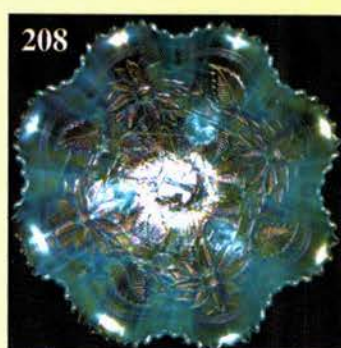
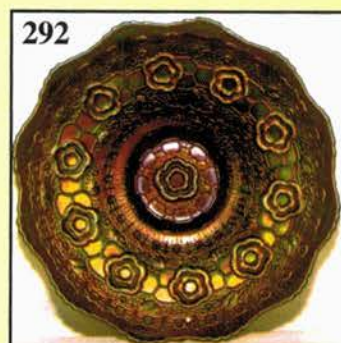


12TH ANNUAL CARNIVAL GLASS AUCTION

NEW YEAR'S EXTRAVAGANZA

Saturday, January 4, 2003 - 9:00 a.m.



Held By the Mickey Reichel Antique & Auction L.C.

Office: 660-882-5292 • Home: 660-882-5283

Direct e-mail: mreichel@undata.com

WEB SITE ON: <http://www.yourauctionpage.com/reichel>



Held Inside the Mickey Reichel Auction Center

1 Mile North of I-70 on Hwy. 5, Exit 101, Boonville, Missouri • 20 Miles West of Columbia, MO on I-70

Preview Friday 12 p.m. - 5 p.m. and 7:30 a.m. - 9:00 a.m. Day of Auction



TERMS: Cash or Good Check, VISA and MasterCard accepted.



3% Clerking Fee on all purchases except for payment of cash or check. Proper I.D. required.

WEB SITE: www.yourauctionpage.com/reichel

ABSENTEE BID POLICY:

WRITE IN BIDS: If you are unable to attend the auction, we will be happy to accept absentee bids which must be received by THURSDAY, JANUARY 2, 2003. Don't Delay. E-Mail: mreichel@undata.com

FOR AUCTION PRICE RESULTS: Send \$3.00 and Large S.A.S.E. to 516 Third Street, Boonville, MO 65233-1536

PLEASE NOTE: There is a **\$5 handling charge for each successful bid which will be added to the selling price** for all write-in bids. This is in addition to the cost of postage, insurance and packing. Your write-in bid will be entered just as if you are present and bidding. **Successful bidders will be notified in 1 to 3 days by the auctioneer (so be sure to include your phone number).** Direct mail bids to Auctioneer **Mickey Reichel, 516 Third Street, Boonville, MO 65233-1536.** Terms: Cash or Check accepted with proper I.D. and Social Security Number and References. Announcements made day of the auction supercede all printed material. Not Responsible for Accidents or Sold Items.

No return on any items once they leave the Auction Center (No Exceptions).****

Call for additional information: 660-882-5292 days or 660-882-5283 evenings before 9:00 p.m.

FAX: 660-882-5292 (evening hours start FAX transmission after beep)

MAIL BIDS: Items are bid on in perfect condition with average or above iridescence OR as listed in the brochures. Bids will not be carried out when damage on an item has been found during the auction.

PEOPLE PRESENT AT AUCTION ARE RESPONSIBLE FOR FINDING ANY PINHEADS, WEAR, SPOTTINESS, MANUFACTURER'S DEFECTS OR ANY OTHER MINOR FLAWS, ETC. *****

NOTE: Read each line, as we have accentuated the type of no particular piece, all are special.

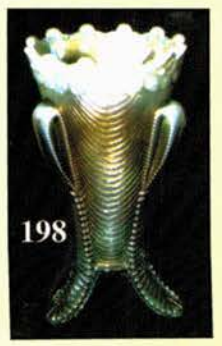
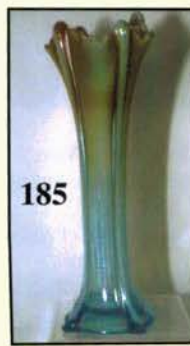
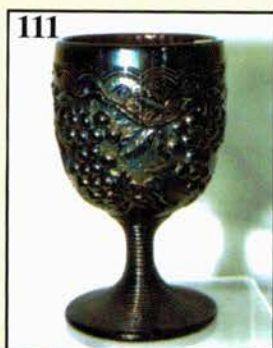
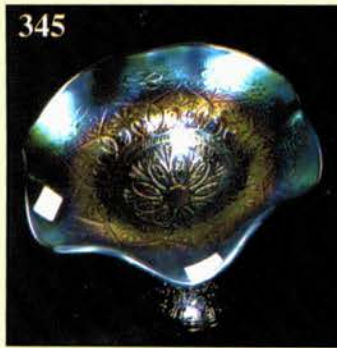
Make Reservations EARLY at one of these local motels:

Days Inn: 660-882-8624 • Comfort Inn: 660-882-5317 • Super 8: 660-882-2900 • Holiday Inn: 660-882-6882

Auction Consists of Rarity, Great Irid. and Variety

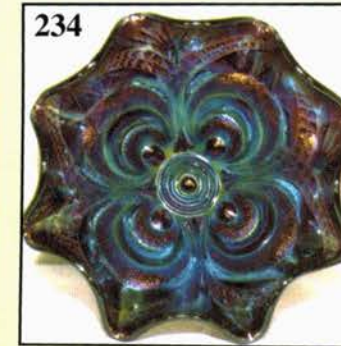
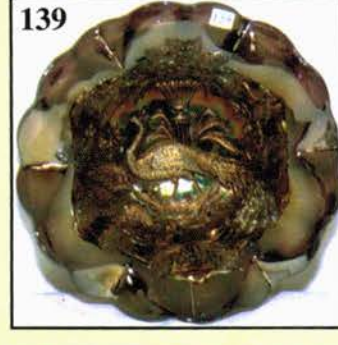
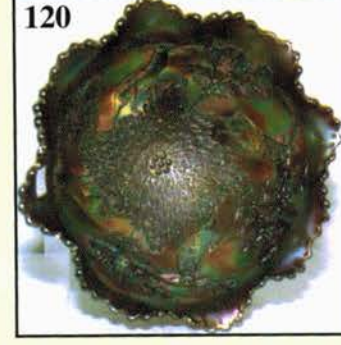
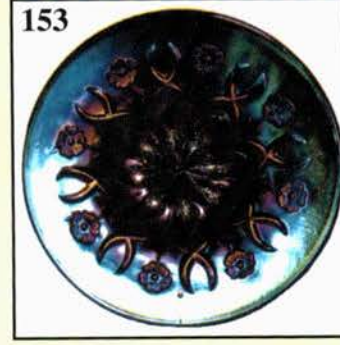
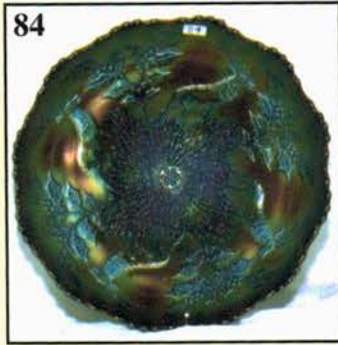
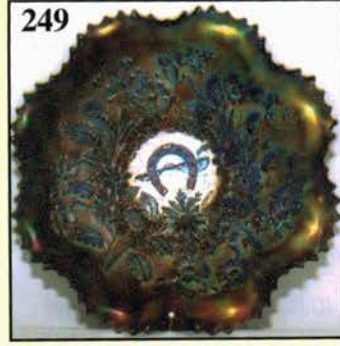
THANK YOU FOR ATTENDING TODAY

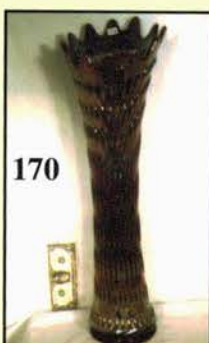
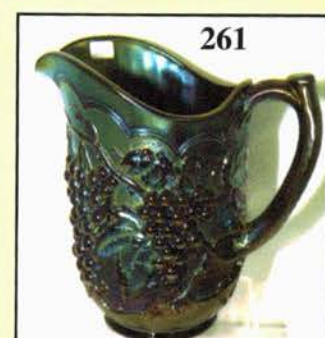
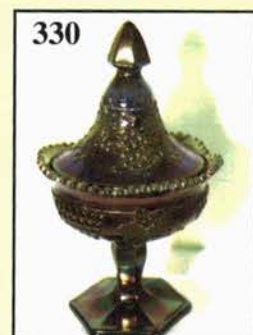
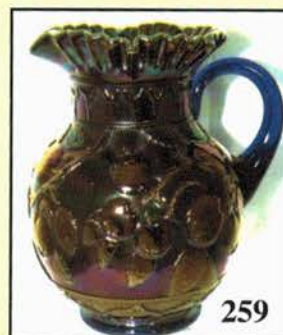
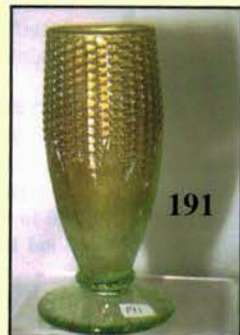
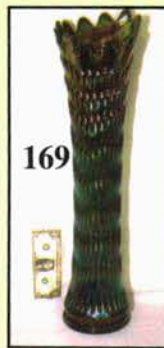
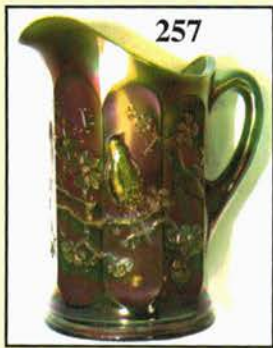
1. PO - Dugan 8-1/2", CRE Smooth Ray/Caroline Bowl - Tight Crimp
2. PO - Dugan 8-7/8", CRE, Dome-Ftd. Ski Star and Compass Plate
3. PO - Dugan 6-1/2", CRE, 6 Ruffle Folding Fan Compote
4. PO - Dugan 6-1/2", 8 Ruffle Starfish Compote - Scarce
5. M - Fenton Inverted Coin Dot Tumbler
6. M - 9" Left-Handed Hand Vase - Dark Base
7. M - Hobstar and Shield Tumbler - Very Scarce
8. M - Cambridge Inverted Strawberry Tumbler - Difficult to Find
9. Pastel M - N Greek Key Tumbler - Extra Nice
10. G - N Greek Key Tumbler - Great Color
11. P - N Greek Key Tumbler - Hard To Find
12. G - N Raspberry Tumbler - Extra Pretty
13. P - N Raspberry Tumbler - Outstanding Color
14. M - N Raspberry Tumbler - Pumpkin
15. Vas. Topaz - N Stretch Concave Diamonds Tumbler
16. Rare Jain M - Birds of Paradise Tumbler - Base Signed B.M. - Rim Flakes
17. Rare Jain M - Shalimar Tumbler
18. Rare Jain M - Brides Bouquet 5-3/4" Tall Tumbler
19. M - Jeanette Niagara Falls Souvenir 3-3/4" Tumbler - Also Rare
20. Rare Jain M - Mirror and Crossbars Tumbler
21. Rare Jain M - Grapevine and Spikes 4-5/8" Tall Tumbler - Sgnd. Jain
22. Rare Jain M - Maharajah 2-3/4" Shot Glass - WOW!
23. Rare Jain M - Beaded Panels and Grapes 5-1/4" Tall Tumbler
24. Rare Jain M - Embroidered Panels 5-5/8" Tall Tumbler
25. Cranberry to Green - 11-1/2" Aurora Pearls Ruffled, Floral Enamel Dec. Bride's Bowl with Silver Holder - Outstanding!
26. Scarce Blue - Dugan 10" Big Basketweave Vase
27. Rare P - Dugan Circle Scroll Creamer - Silver Satin Finish
28. Near Pumpkin M - Fenton Leaf Tiers Cream Pitcher - Good Feet



29. Rare W - Fenton Orange Tree Cream Pitcher
30. Beautiful P - N Grape and Cable Butter Dish w/Lid
31. P - N Grape and Cable Sugar w/Lid
32. P - N Grape and Cable Cream Pitcher
33. P - N Grape and Cable Spooner
34. Rare Smoke - Imp. Open Rose Rosebowl - 5" Opening - Mirror Like Finish
35. P - Dugan 11-1/4", 6 Ruffle Victorian Bowl - Multi Irid.
36. Scarce M - Fenton 8-3/4", 8 Ruffle Coral Bowl
37. G - Fenton 9", Sq. 8 Ruffle Plaid Bowl - Uncommon Base Color
38. Beautiful P - N 9" Strawberry Plate - BW Ext.
39. Pastel M - N Ruffled Poppy Show Bowl
40. Great Ice G - N Ruffled Hearts and Flowers Compote
41. G - N Grape and Cable Thumbprint Master Berry and Six Sm. Berry Bowls
42. A - Fenton Butterfly and Fern Pitcher - Above Average Example
43. A - Fenton Butterfly and Fern Tumblers - Choice A or B
44. P - N Greek Key Water Pitcher - Very, Very Scarce
45. P - N Greek Key Tumbler
46. B - Fenton Floral and Grape Vt. Tumblers - Choice A or B
47. Teal - Imp. Tiger Lily Tumbler - Base Glows
48. Rich M - N Grape and Gothic Arches Water Pitcher - Great Example
49. M - N Grape and Gothic Arches Tumbler - Choice A, B, C or D
- ★50. FIRST KNOWN! - Amethyst Fenton 9-1/2" Peacock and Urn Plate - Beautiful Once In A Lifetime Offering!
51. Teal - N Singing Birds Tumbler - Radium Beauty
52. Smoke - N Grape and Cable Tumbler - Gorgeous Find
53. M - Mlbg. Gay Nineties Tumbler - Need I Say More? - Super Radium
54. Amber - Fenton Orange Tree Sm. Mug - 2-1/2" Base, 3-3/8" Top
55. Rare Red Slag - Fenton Orange Tree Mug - 2-1/2" Base, 3-1/2" Top - Dark and Nice
56. AO - N Dandelion Mug - Loaded with Opal
57. Rare B - N Dandelion Mug
58. BA - Fenton Orange Tree Shaving Mug - 3" Base, 3-1/2" Top - Radium Dandy
59. Amber - N Singing Birds Mug - Quite A Find
60. M - N Dandelion Knight's Templar Mug - Very Pretty
61. M - Imp. Fieldflower Tumbler - Radium Pinks and Blues
62. Lav. Smoke - Dugan Heavy Iris Tumbler - Striking, Scarce Example
63. M - Imp. Fine Cut Flower Compote
64. P - N Smooth Rays Bonbon - Great Color and Not Easy to Find
65. PO - Dugan Four Flowers 6-1/2" Plate - BW Ext. - Top of the Line
66. W - Dugan Persian Garden 5-1/2" ICS Bowl - Rainbow Pastel Irid.
67. Light M - N 9" Ruffled Stippled Rays Bowl - BW Ext.
68. M - N Wild Rose Nut Bowl
69. Soft B - Fenton Collar Base, 8 Ruffle, 8-1/2" Dragon and Lotus Bowl - Great Colors
70. Ice G Vas. - 8", 8 Sided Stretch Diamond Optic Plate - GLOWS
71. Cranberry to Blue - Pastel Dunbar Roll JIP 4" Vase
72. Custard - N Grape and Gothic Arches Goblet - Nutmeg Finish - Non-Irid.
73. W - N Fine Cut and Roses Ruffled Candy Dish - Frosty - Normal Feet
74. M - Imp. Optic Flute Stemmed Whimsey Ruffled Cuspidor
75. M - Higbee Diamond Fountain Cruet w/Stopper - Scarce and Desirable
76. M - English Hobnail Oval, Stemmed Miniature Salt
77. Ruby Flashed - Portland Banded 4-3/4" Oval Pin Tray - Mkd. Souvenir Moulton, Iowa
78. M - Fenton 9-1/2" Captive Rose Plate - Radium Beauty
79. Lime G - Fenton 12-1/2" Diamond Point Columns Vase - M. Overlay On Top Half
80. M - Fenton Mikado 10-1/4", Rd. Compote - Top Flares Nicely
81. Pumpkin M - Fenton Two Flowers 10", Ball Ftd., 8 Ruffle Bowl - Great Pinks
82. W - Dugan Persian Garden 11-1/4", ICS Bowl - Unbeatable Blues
83. PO - Dugan Persian Garden 11", ICS Bowl - Superb Opal
84. Electric Blue - Fenton 10" Stag & Holly Ball Ftd., ICS Bowl - Unbelievable Color and Incredible Strike
85. M - Fenton 10-3/4" Stag and Holly Ball Ftd., ICS Bowl - Marvelous Color
86. A - N PCE 10" Grape and Cable Salad Bowl - Most Unusual Shape
87. M - N PCE 10" Grape and Cable Salad Bowl - Also Scarce
88. Purple - N Grape and Cable 10-3/4", Ball Ftd. Fruit Bowl - 5" Tall - Awesome Electric Example
89. Superb P - N Grape and Cable Cologne Bottle w/Stopper
90. M - N Grape and Cable Cologne Bottle w/Stopper - Nice One
91. W - Fostoria Brocaded Poinsettia Compote - 5-1/4" Tall, 6-1/2" Rd., Flared Top
92. P - N Grape and Cable Powder Jar w/Lid - Always In Demand
93. M - N Grape and Cable Powder Jar w/Lid - Very Scarce
94. M - Fenton Vintage (Grape) Powder Jar w/Lid - Extra Nice
95. B - Fenton Orange Tree Powder Jar w/Lid - Super Color, Lid Chipped
96. RARE A - Fenton Orange Tree Powder Jar w/Lid - Quality Item
97. G - Cambridge Inverted Strawberry Powder Jar w/Lid - Not Often Seen
98. M - Cambridge Inverted Strawberry Powder Jar w/Lid
99. M - Band of Stars Decanter w/Stopper
100. Splendid Multi Electric - Dugan Farmyard 3 in 1 Bowl - Outstanding Piece
101. Rich M - Imp. Grape Decanter w/Six Well-Matched Wines
102. M - Dugan Vintage Banded Mug
103. G - Fenton Autumn Acorns 7-3/4", ICS Bowl - Pretty Example
104. P - Imp. Grape 5", Round Berry Bowl - Electric Finish
105. M - N Strawberry 8-3/4", 8 Ruffle Bowl - Rich and Colorful - BW Ext.
106. Powder B - Fenton Acorn 7", ICS Bowl - Scarce Color and Nice
107. Rare Teal - Fenton Acorn 7", ICS Bowl - Green Iridescence
108. G - Fenton Acorn 7-1/2", Sq. 8 Ruffle Bowl - Great Base Color
109. Clambroth - N Sunflower Spat. Ftd., 8 Ruffle 9" Bowl
110. Blue Opal - Westmoreland Smooth Ray 8-1/2", 6 Ruffle Bowl - Attractive Base Color
111. Elec. P - Imp. Grape Lg. Goblet - Scarce Beauty
112. BA - Dugan Cherries Collar Base, 8 Ruffle 9-3/4" Bowl - Jewelled Heart Ext. - Few Known with 8 Ruffles
113. P - Dugan Cherry Proof Whimsey 8-1/4" Round Bowl - Jewelled Heart Ext.

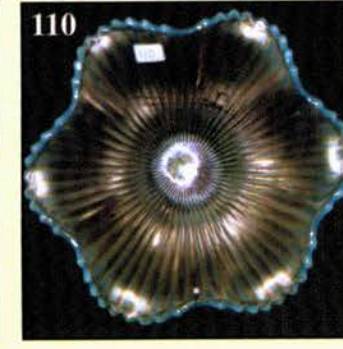
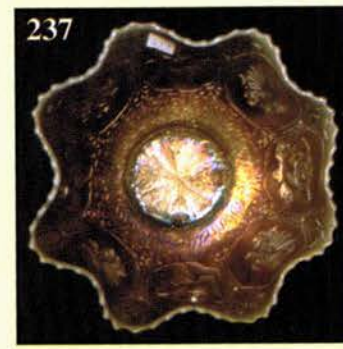
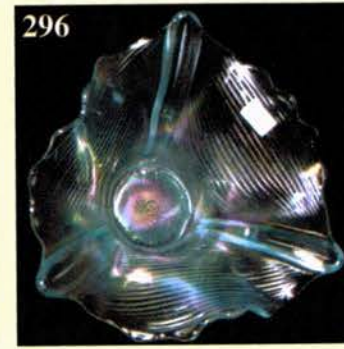
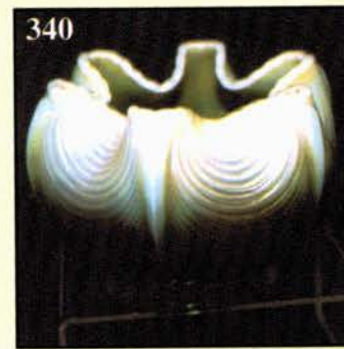
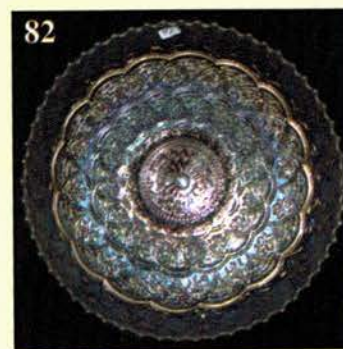
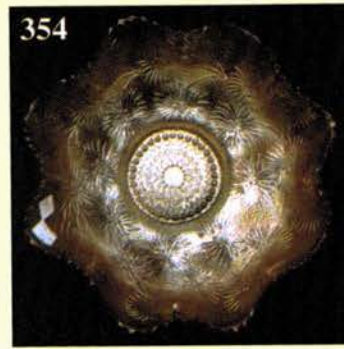
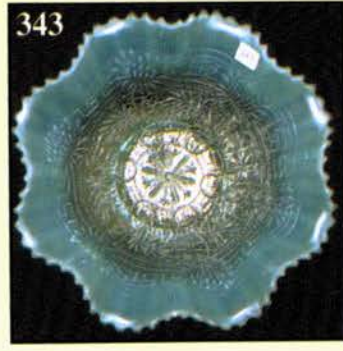
114. B - N Peach Tumbler - Elec. Blue Highlights
115. Vas. IG - Fenton Enameled Shasta Daisy Tumbler - Nice Find
116. Pumpkin M - Fenton Ten Mums Tumbler
117. M - N Waterlily and Cattails Tumbler - Scarce
118. MMG - Westmoreland Carolina Dogwood 9", 6 Ruffle Bowl - Super Example
119. Pumpkin M - N Acorn Burrs Master Bowl and Six Sm. Berry Bowls - Well-Matched Set
120. B - Fenton Stag and Holly 9", 8 Ruffle, Ftd. Deep Fruit Bowl - Multi-Electric
121. Rich M - N Memphis Ruffled Fruit Bowl and Base - Great
122. B - Fenton Orange Tree 11-3/8" Rd., Flared Punch Bowl and Base - Outstanding Shape & Color
123. M - Fenton Orange Tree 11-3/8" Rd., Flared Punch Bowl and Base - Outstanding Shape & Color
124. B - Fenton Orange Tree Scroll Tankard Water Pitcher - Rare Find
125. Great Multi-Elect. P - N Grape and Cable 7 pc. Water Set - Well Matched
126. B - N Peacock At Urn 9-1/2", ICS, Fully Stippled Bowl - Alluring Hues
127. B - N Peacock At Urn 5-1/2", ICS Fully Stippled Bowl - Extremely Scarce
128. M - N Peacock At Urn 9-1/4", ICS Fully Stippled Bowl - Rarer Than Blue
129. P - Mlbg. Peacocks 9-3/8", Rd., Flared Master Bowl - Radium w/Great Detail
130. Spectacular Radium P - Mlbg. Peacocks 5-1/4" Berry Bowls - Choice A, B, C, D, E, F
131. G - Mlbg. 7-1/2", 3 in 1, Shotgun Bowl - Sparkling Radium Find
132. G - Mlbg. Hanging Cherries Vt. Tumblers - Choice A, B, C, D, E, F
- 133A. Deep Blue - Mlbg. Peacock 6", 3 in 1 Sauce Bowl - Rare Base Color
133. A - Mlbg. Peacock at Urn 9-3/4", ICS Bowl - Multi Electric Inside
134. G - Mlbg. Blackberry Wreath 7-1/2", 6 Ruffle Bowl - Nice Radium Example
135. G - Mlbg. Seaweed 10-1/4", 3 in 1 Bowl - Scarce Pattern
136. G - Mlbg. Sunflower Pin Tray - Flat Flake On Tip - Still A Rarity
137. Emerald G - Mlbg. SQUARE 9-1/4" Whirling Leaves Bowl - Only 3 or 4 Known
138. A - Mlbg. Peacocks 6-1/4" Flat Plate - 1-1/8" Off Table - True Rarity
139. Awesome P - Mlbg. Peacocks 9-1/2", 6 Ruffle, Flared Bowl - Ultra Radium
140. A - Mlbg. Hanging Cherries 10", ICS Bowl - Choice Color and Condition and Clean Cherries
141. P - Mlbg. Nesting Swan 9-3/4", 6 Ruffle Bowl - Superb Radium
142. P - Mlbg. Blackberry Wreath 10", ICS Bowl - Superior Color, Finish, Shape
143. Dark M - Mlbg. Hobnail Spittoon - Radium and Nice
144. RED - Eyewinker Whimsey Spooner - Sgnd. Robert Hansen - 5-3/4" Tall
145. RED - Fenton Stippled Rays 7" Plate - Scale Band Ext. - Rare Find
146. Teal - Fenton Stippled Rays 7" Plate - Scale Band Ext. - First Time Offered!
147. M - Fenton Persian Medallion 6-3/8" Plate - Scarce Orange Tree Ext.
148. M - Palm Beach 7-1/8" Plate - Goofus Finish On Rev.
149. M - Fenton Kittens 4-1/2", 2 Sides Up Banana Shape Plate - Great Color
150. M - Fenton Peacock Tail 6-1/2" Plate - Scarce
151. M - Westmoreland Hobstar and Fruit 5-1/2" Banana Dish
152. BA - Australian Butterfly Bower 6-1/2", 12 Ruffle Bowl - Nice Color
153. P - Dugan 6-1/2" Wishbone and Spades Plate - Plain Ext. - Gorgeous Electric
154. M - Fenton Stippled Rays 7" Plate - Scale Band Ext.
155. M - Fenton Persian Medallion 6-1/4" Plate - Plain Ext.
156. Teal - Imp. Grape 6-1/2" Plate - Glows!
157. W - Dugan Flat 7-3/4" Fishscale and Beads Plate - Dandy
158. Light B - Fenton 7-3/4" Leaf Chain Plate
159. Green - Fenton Persian Medallion 7-1/2" Plate - Rare Color and Size
160. A - Dugan Flat 7-1/4" Fishscale and Beads Plate - Awesome Multi-Electric
161. Persian Blue - Westmoreland Hobstar and Fruit 5-3/4", 6 Ruffle Bowl - Very Rare
162. Blue Opal - Westmoreland 8" Corinth Vase - Great Base Color
163. AO - N 10-1/4" Four Pillars Vase - Toes Chipped, Still Pretty
164. AO - N 10" Four Pillars Vase - 4" Square Top - Toes Chipped
165. B - Fenton 16-1/2" Spearhead and Rib Vase - Multi Electric
166. Pumpkin M - Fenton 15-1/4" Spearhead and Rib Vase
167. Scarce G - Fenton 15" Spearhead and Rib Vase - Multi Electric
168. Stupendous P - Fenton Rustic Funeral Vase - 17-1/2" Tall, 15-3/4" Front Height, 5-1/4" Plunger Base
169. Emerald G - Fenton Rustic Funeral Vase - 22-1/4" Tall, 19-5/8" Front Height, 5-1/4" Plunger Base
170. Mammoth Elec. B - Fenton Rustic Funeral Vase - 23-1/2" Tall, 20-1/2" Front Height, 5-1/4" Plunger Base
171. B - Fenton Rustic Funeral Vase - 19" Tall, 17" Front Height, 5-1/4" Base - Very Nice
172. M - Fenton Rustic Funeral Vase - 18-3/4" Tall, 16-3/4" Front Height, 5-1/4" Base - Great Color
173. W - Fenton Rustic Funeral Vase - 18-1/4" Tall, 15-3/4" Front Height, 5-1/4" Base - Electric Pastel
174. G - Fenton Rustic Funeral Vase - 18-5/8" Tall, 16-1/2" Front Height, 5-1/4" Base - OH SO NICE!
175. Super A - Fenton Rustic Funeral Vase - 18" Tall, 16-1/2" Front Height, 5-1/4" Base
176. W - Fenton Rustic Funeral Vase - 18" Tall, 15" Front Height, 5-1/4" Base - 2" x 1/2" Chip On Top
177. M - Imp. 10-1/2", 474 Vase - Base Chip - Still Very Much In Demand
178. Lime Ice G - N 10-1/4" Diamond Point Vase - Beautiful Rarity
179. Ice G - N 11-1/2" Thin Rib Vase - Another Great One
180. M - Western Thistle 4-3/4" Vase - 3" Pinched Top - Little Rarity
181. Pumpkin M - N 7-1/2" Thin Rib Vase - 4-1/4" Sq. Top
182. G - N Squatty 7-1/2" Fine Rib Vase - 5" Ruffled Top - Great Irid.
183. Gorgeous Smoke - Imp. 7-1/2" Curled Rib Vase - 6" Wide Flared Top
184. Scarce P - Dugan 7-1/2" Lined Lattice Vase - Daisy Interior
185. Blue Opal - N 10-3/4" Four Pillars Vase - Soft Butterscotch Top - Beautiful
186. Vas. Opal - N 10-1/4" Four Pillars Vase - Non-Irid. - Very Rare
187. M - Imp. Loganberry Vase - Loaded with Iridescence
188. M - 7-1/4" Egyptian Queen Tall Tumbler or Vase





189. M - Classic Arts 4-1/4" Rd., 3" Tall Bowl
190. G - Imp. Loganberry Vase - This One Is Not Helios, It's Pretty
191. Lime Ice G - N Corn Vase w/Floral Base - Pastel Highlights
192. Northwood Blue - Squatty 7-3/4" Thin Rib Vase - Lots of Color
193. P - N 11" Tree Trunk Vase - Good One
194. P - Imp. Beaded Bullseye 11" Vase - 5-1/2" Flared Top and Multi Electric
195. P - Imp. Ripple 11" Vase - Imperial At Its Finest
196. P - Imp. Ripple 11-3/4" Vase - Well Detailed and Lovely
197. Scarce M - N Daisy and Drape Vase - Cupped In Top
198. Pastel AO - N Daisy and Drape Vase - Flared Top
199. W - N Daisy and Drape Vase - Cupped In Top - Frosty Example
200. P - N Ivy Town Pump Vase - Great Example!
201. PO - Dugan Wide Rib 5" Squatty Vase - 6" Flared Top - Really Neat
202. Mammoth Pastel M - Imp. Poppy Vase - Loaded with Pastel Irid.
203. Rare Violet - N 10" Tree Trunk Vase
204. Renninger B - N Drapery Vt. 8-1/2" Vase - Good Feet - May Be A First!?!
205. G - Dugan 11-1/4" Target Vase - Ever Seen One?
206. Mongolian Green - Fenton Dancing Ladies 8-1/2" Ftd., Ruffled Vase - Circa 1934 - Non-Iridized - Fantastic
207. Persian B - Fenton Vintage (Grape) 8-3/4", 8 Ruffle Bowl - Super Iridized Find
208. Dark Ice B - N Poinsettia and Lattice Ftd., Ruffled Bowl - Marvelous Pastel Irid.
209. Aqua - N Hearts and Flowers 9" Ruffled Bowl - Excellent Pastel - Opal Tips (?)
210. Aqua - N Rose Show Ruffled Bowl - Rare - Marie Chips
211. M - Grape and Cable Pin Tray - Neat Little Item
212. Rare B - Fenton Kittens Cup
213. M - Flashed - 2" Tall Mini Chamber Candlestick
214. A - Dugan Beaded Shell Mug
215. Scarce G - N Bushel Basket - Way Above Average
216. Vas. Stretch - Fenton Nut Bowl Set - Master and Five Small Ftd. Nut Bowls
217. Florentine Ice G Stretch - 7-1/2", 2 Sides Up Compote
218. M - Fenton Plaid 9" Plate - Slightly Flared
219. B - Fenton Floral and Grape Tumblers - Choice A, B, C, D, E, F
220. B - Fenton Blackberry Block Tumblers - Choice A, B, C, D, E
221. A - Near Cut Inverted Strawberry Tumbler
222. Pearlized Custard - N Grape and Gothic Arches Tumblers - Gold Trim - Choice A, B, C, D, E, or F
223. Honey Amber - U.S. Glass Cosmas and Cane J.R. Miller Advertising Tumbler - Rare
224. Super M - Fenton Leaf Tiers Tumbler - Great Find
225. M - Mlbg. Feather and Heart Radium Tumbler
226. M - Mlbg. Marilyn Tumbler - Radium
227. Rare P - Mlbg. Marilyn Tumbler - Gorgeous Radium
228. Aqua Base - Mlbg. Diamonds Tumbler - Uncommon Color and Nice!
229. Electric P - Mlbg. Diamonds Tumbler - Super Radium
230. M - Mlbg. Diamonds Tumbler - Its Pretty, Too
231. G - N Stippled Strawberry 9", PCE Bowl - Very Hard to Find
232. P - N Three Fruits Vt. 8-1/2", PCE Bowl - Smooth Ext. - Very Unusual
233. M - N Peacocks 8-1/2", PCE STIPPLED Bowl - Rare Treatment For this Color
234. P - Imp. Scroll Embossed 7-1/2", 8 Ruffle Lg. Compote - Eastern Star Ext. - Astonishing Blues & Purples
235. Scarce M - Imp. Fashion 6" Rosebowl
236. Pumpkin M - N Nippon PCE Bowl - Wow! Wow! Wow!
237. Lime Vas. Opal - Fenton Dragon and Lotus Collar Base, 9", 8 Ruffle Bowl - Very Rare
238. Lime Vas. Opal - Fenton Peacock and Grape 9", 3 in 1 Edge, Collar Base Bowl - Also Rare
239. Blue - N Strawberry STIPPLED PCE Bowl - Multi Electric
240. M - N Ruffled Poppy Show Bowl - Pink Highlights
241. P - N Peacocks 8-3/4", Ruffled Bowl - Loaded with Great Color
242. B - N Wishbone 8 Ruffle, Ftd. Bowl - Very Desirable
243. G - N Wishbone 8 Ruffle, Ftd. Bowl - Quality Example
244. Scarce M - N 9" Stippled Good Luck Plate - Rib Ext. - Thin Base
245. M - Fenton Lions 7-3/4" Plate - Very Rare
246. Very Desirable A - N Wishbone 8-1/2", Ftd. Plate
247. Pumpkin M - N Grape and Cable Bonbon - BW Ext.
248. Awesome P - N Good Luck PCE Bowl - BW Ext. - Looks Like It Was Dipped In Electric Blue
249. B - N Stippled Good Luck Ruffled Bowl - Enchanting Irid.
250. Remarkable W - N Peacock at Fountain Punch Bowl, Base, Six Cups - A Glorious, Well-Matched, Rare and Valuable Set
251. Super Elec. P - N Acorn Burrs Punch Bowl & Base w/6 Cups
252. P - N Grape and Cable Small Size Punch Bowl and Base - Electric Magic Blues
253. Scarce M - N Grape & Cable Sm. Size Punch Set - 8 pcs.
254. Magnificent - N Crystal Memphis Master Punch Bowl, Base, 8 Cups
255. Rare G - N Peacock at Urn 10-1/4", ICS Bowl - Try and Find One!
256. P - N Peacock at Urn 10", ICS Bowl - Purples, Blues and Golds
257. Gorgeous G - N Singing Birds Water Pitcher - Awash In Pinks and Greens
258. G - N Singing Birds Tumblers - Choice of A, B, C, D, E or F
259. Elec. B - Fenton Apple Tree Pitcher - Radium Gem
260. B - Fenton Apple Tree Tumblers - Choice of A, B, C, D, E or F
261. P - Imp. Grape Water Pitcher - Breathtaking Electric Iridescence
262. Very Rare Pumpkin M - Imp. Optic and Buttons Water Pitcher - Iron Cross Mark
263. Rare Amber - Grand Thistle Water Pitcher - Super Example
264. Amber - Grand Thistle Tumblers - Choice A, B, C, D or E
265. Rich M - N Grape Arbor Tankard Water Pitcher
266. M - N Grape Arbor Tumbler
267. P - N Singing Birds Water Pitcher - Purple and Gold Irid.
268. P - N Singing Birds Tumblers - Choice A, B, C or D
269. Frosty W - N Grape Arbor Tankard Pitchers & 6 Tumblers - Great Match
270. M - Fenton Paneled Dandelion Water Pitcher - Rare w/Handle At Seam
271. Frosty W - N Oriental Poppy Tankard Water Pitcher
272. M. to Clear - N Clover/Wildflower Enamel - Dec. Tankard Pitcher - Very Rare
273. M - Floral and Grape Water Pitcher

- _____ 274. Cobalt B - Lucille Water Pitcher - Factory Flawed Base - Scarce and Beautiful
- _____ 275. Lovely M - Fenton Blueberry Water Pitcher - Lots of Pinks
- _____ 276. M - Dugan Vineyard Bulbous Water Pitcher - Color Top to Bottom
- _____ 277. M - Dugan Vineyard Tumblers - Choice A, B, C or D
- _____ 278. M - N Fantastic Wide Panel Epergne - As Good As They Get
- _____ 279. G - N Strawberry PCE, 8-1/2" Bowl - BW Ext. - Near Emerald
- _____ 280. Rare Imp Smoke - Heavy Grape 6-1/4" Rd. Bowl - Very Pretty
- _____ 281. Scarce M - Fenton Daisy Cut Bell - Neat Item
- _____ 282. Rich M - N Three Fruits 9" Stippled Plate - Lt. Wear
- _____ 283. Unusual Lav. - Imp. Pansy 9-1/2" Low Ruffled Plate - Look at the Color On This One!
- _____ 284. Soft P - N Peacocks 8 Ruffle Bowl - Multi Electric - Rib Ext.
- _____ 285. Fantastic Moonstone - Fenton Holly 8 Ruffle Bowl
- _____ 286. PO - 10-3/4", CRE, 8 Ruffle Bride's Bowl
- _____ 287. Crystal - Ivy Ball Style Giant Stemmed 7-1/4" Rosebowl - Milbg?
- _____ 288. A - Fenton Butterfly and Berry 8", Ftd., Rd. Scalloped Berry Bowl - Rare Plain Int.
- _____ 289. B - N Sunflower Spat Ftd., 8-1/2", Ruffled Bowl - Great Center
- _____ 290. Ultra Rare Sapphire - N Elegance 7-3/4", 8 Ruffle Bowl - Possibly One of a Kind
- _____ 291. Extra Nice M - N 9" Peacocks Plate - Pinks, Blues, Yellows
- _____ 292. Outstanding G - Fenton 9-1/4" Captive Rose Plate - Green & Pink Irid.
- _____ 293. Beautiful Lav. Opal - Fenton Vintage (Grape) 6-1/4" Rd., Flared Bowl - None Reported
- _____ 294. Pastel M - N 9" Three Fruits Plate - BW Ext. - Pink and Blue Highlights
- _____ 295. Powder B - Fenton JIP, 5-1/2" O.E. Basket - Seldom Offered
- _____ 296. Dark Radium Ice B - N 7" Tri-Corner Drapery Bowl
- _____ 297. Dark Ice B - N 9-1/2", Flat Rose Show Plate - Pastel Irid. - Blues & Purples
- _____ 298. White - Aurora Pearls 11", CRE, Ruffled, Enamel Dec. Brides Bowl - WOW
- _____ 299. Pastel M - Orange Tree Hatpin Holder - Super Nice Example
- _____ 300. Extremely Rare Lime G Opal - N Three Fruits Medallion Spat. Ftd., 8 Ruffle, Stippled Bowl
- _____ 301. P - N Grape and Cable 7-1/2" Plate - BW Ext. - Scarce Size, Great Color
- _____ 302. P - N Embroidered Mums 8-1/2", 8 Ruffle Bowl - Always In Demand
- _____ 303. G - Fenton Persian Medallion 10-1/4", 6 Ruffle Bowl - Scarce Size & Color
- _____ 304. W - N Rose Show 9-1/4" Flat Plate - Blues, Greens and Yellows
- _____ 305. B - N Good Luck Stippled, Ruffled Bowl - Multi Electric - Rib Ext.
- _____ 306. P - Dugan Petal and Fan 10-1/2", 6 Ruffle Bowl - Electric Rainbow Colors
- _____ 307. P - Dugan Smooth Rays 11", 8 Ruffle Bowl - Jeweled Heart Ext. - Stunning Color
- _____ 308. Celeste B - Dugan Double Stem Rose 10 Ruffle Bowl - Stretchy!
- _____ 309. B - N Rose Show 9", 8 Ruffle Bowl - Multi Electric Color
- _____ 310. M - N Rose Show 9", 8 Ruffle Bowl - Pinks and Yellows
- _____ 311. Red - Fenton Water Lily 5-1/2", Ftd., Ruffled Bowl - Top of the Line
- _____ 312. Red - Fenton Holly 9", 8 Ruffle Bowl - Great Example
- _____ 313. Red - Fenton Dragon and Lotus 8-1/2", ICS, Collar Base Bowl - Pretty One
- _____ 314. Rev Amberina Red - Fenton Dragon and Lotus 8-1/4", ICS Bowl - Hard to Find Color
- _____ 315. Incredible Red - Fenton Little Flowers 10", 8 Ruffle Bowl - Time to Buy Red!!
- _____ 316. Rare Red - Fenton Peacock Tail 6-1/4", ICS Bowl - Tiny Rim Flake
- _____ 317. Red - Fenton Blackberry Spray 7", Two Sides Up Hat
- _____ 318. Red - Rooster Hatpin
- _____ 319. Red - Rooster Hatpin - Black Background
- _____ 320. Soft B - Rooster Hatpin - Black Background
- _____ 321. Teal - Rooster Hatpin
- _____ 322. Dark B - Rooster Hatpin - Black Background
- _____ 323. W - Rooster Hatpin
- _____ 324. W - Rooster Hatpin - Black Background
- _____ 325. Amber - Rooster Hatpin
- _____ 326. Amber - Rooster Hatpin - Black Background
- _____ 327. Lav. - Rooster Hatpin
- _____ 328. Fantastic Butterscotch AO - N Round Bushel Basket
- _____ 329. Rare B - N Grape and Cable Thumbprint 5" Rd. Berry Bowl - Few Known
- _____ 330. Very, Very Rare B - N Grape and Cable Sweetmeat Compote w/Lid - Chip on Lid
- _____ 331. P - N Peacock at Urn 10-1/4", ICS Bowl - Extra Nice
- _____ 332. M - N Peacock at Urn 9-3/4", ICS Bowl - Loaded with Pinks & Blues
- _____ 333. Blue - N Peacock at Urn 9-3/4", ICS Bowl - Blue is Scarce
- _____ 334. W - N Peacock at Urn 10-1/4", ICS Bowl - Pastel Highlights
- _____ 335. RARE Honey Amber - U.S. Glass Cosmos & Cane 11" Flat Chop Plate - Rainbow Irid.
- _____ 336. Awesome P - Imp. Homestead 10-1/4" Chop Plate - Devastating Color!
- _____ 337. Ice B Opal - N Leaf Beads Rosebowl - Super Pastel Item
- _____ 338. Ice B Opal - N Peacocks Ruffled Bowl - Pink & Marigold Highlights
- _____ 339. AO - N Leaf Beads Rosebowl - Great Example
- _____ 340. Pastel AO - N Drapery Rosebowl - 1-1/2" of Opal - WOW!
- _____ 341. AO - N Three Fruits Stippled, Ruffled, 8-3/4", Collar Base Bowl - Soft Butterscotch Overlay
- _____ 342. Rare AO - Fenton Vintage (Grape) 8-1/2", 3 in 1 Bowl - Loaded w/Opal
- _____ 343. Pastel AO - N Embroidered Mums 8-3/4", 8 Ruffle Bowl - Harder to Find Every Year
- _____ 344. AO - N Hearts and Flowers Ruffled Compote - Outstanding Butterscotch Overlay
- _____ 345. B - N Hearts and Flowers Ruffled Compote - Light Opal on Edge
- _____ 346. Dark Ice B - Hearts and Flowers Ruffled Compote - Rainbow Pastel Irid.
- _____ 347. Rare Ice G - N Peacock at Fountain Ruffled Compote - Excellent Item
- _____ 348. W - N Hearts and Flowers 8-1/2", 8 Ruffle Bowl
- _____ 349. Dark Ice B - N Fine Cut and Roses Rosebowl - Fancy Int. - Great Feet!
- _____ 350. Dark G - N Raspberry Water Pitcher - Beautiful Emerald Highlights
- _____ 351. B - Fenton Peacock at Urn 9-1/4" Plate - Multi-Electric
- _____ 352. Pumpkin M - Peacock at Urn 9-1/4" Plate - Outstanding Coloration
- _____ 353. G - Fenton Peacock at Urn 9", 8 Ruffle Bowl - Fantastic Pea Fowl! - Rare Color



- _____ 354. M - Fenton Little Daisies 9-3/4", Sq. 8 Ruffle Bowl - One of Few
- _____ 355. PO - Dugan Cherry 8-1/2", ICS Whimsey Proof Bowl - Collar Base - Great Opal
- _____ 356. P - Dugan Dogwood 9", 10 Ruffle Bowl - Scintillating Electric Piece!
- _____ 357. B - Fenton Vintage (Grape) 9-3/4", Sq. 8 Ruffle Bowl
- _____ 358. Clambroth - N Poppy Show 8-3/4", 8 Ruffle Bowl - Pastel Irid.
- _____ 359. B - N Strawberry 8-3/4", 8 Ruffled, Stippled Bowl - Multi Electric
- _____ 360. Pastel M - N Greek Key 9" Plate - Rib Ext. - Pinks and Blues On This Rarity
- _____ 361. M - N Embroidered Mums 8-1/2", 8 Ruffle Bowl - Blue Tints
- _____ 362. Scarce M - N Drapery Rosebowl - Seldom Offered
- _____ 363. Pastel M - N Peacocks 9" Plate - Rib Ext. - Yellows, Blues & Pinks
- _____ 364. A - N Strawberry 9-1/4" Flat Plate - BW Ext. - Great Example
- _____ 365. G - N Wishbone Ruffled, Ftd. Bowl - Bronze and Greens
- _____ 366. P - N Grape and Cable 11" Ftd. Fruit Bowl - 5" Tall - Superb Color
- _____ 367. P - N Three Fruits 9" Plate - BW Ext. - Way Above Average
- _____ 368. Fantastic A - N 6-1/4" Fern Brand Chocolates Card Tray Plate
- _____ 369. Rare G - Fenton Ten Mums 9-1/2", Ball Ftd., 3 in 1 Bowl - Virtually Unheard Of
- _____ 370. Elec. B - N Grape and Cable Stippled Bonbon
- _____ 371. P - 6" Tall, 5-1/4" Double Handled Compote - Westmoreland Insignia
- _____ 372. Electric Radium P - Imp. Hattie 8-3/4", 8 Ruffle Bowl - Show Stopper!

- _____ 373. P - Imp. Cobblestone 8-1/2", 8 Ruffle Bowl - Electric Favorite
- _____ 374. P - Imp. Shell and Sand 7-3/4", 8 Ruffle Bowl - And Its Electric
- _____ 375. P - Imp. Scroll Embossed 9-1/2" Flat, Flat Plate - Rainbow Satin Beauty
- _____ 376. P - Imp. Scroll Embossed 7-1/4" Lg., Ruffled Compote - Eastern Star Ext. - Screamer!
- _____ 377. P - Imp. Pansy Oval Pickle Dish - Dripping With Color
- _____ 378. P - Imp. Grape 5-1/2", 6 Ruffle Compote - Surprise! It's A Dandy
- _____ 379. Teal - Westmoreland Prisms Two-Handled Bonbon
- _____ 380. A - Dugan Beaded Shell Mug
- _____ 381. Rare Ice G - Peacock At Fountain Punch Cup - Chipped Marie
- _____ 382. M - Stork In Rushes Mug
- _____ 383. Pink - Iridized Pastel Swan Salt
- _____ 384. Pink - Fenton Stag and Holly 10-1/4" ICS, Ball Ftd. Bowl
- _____ 385. Contemporary - M - One Cup Measuring Cup w/Juicer Top
- _____ 386. B - Fenton 16" Spearhead and Diamonds Vase

SPECIAL NOTE:

NO SUNDAY CALLS, PLEASE!

Winning Absentee Bidders will be contacted Monday through Wednesday of the week following the Auction!

Thank You!

For Free Color Catalogs & Information Write:

Mickey Reichel

516 Third Street, Boonville, MO 65233-1536

or Call: 660-882-5292 days or

660-882-5283 evenings

E-mail: mreichel@undata.com

NEED QUALITY CARNIVAL GLASS

*"We don't want all the Business,
Just Yours."*

WE DO AUCTIONS RIGHT!!

👉 2003 CALENDAR

February 22, 2003

COLLECTION

at Boonville, Mo. Auction Gallery

March 15, 2003

COLLECTION CARNIVAL GLASS

at Boonville, Mo. Auction Gallery

April 12, 2003

WOODSLAND WORLD WIDE CARNIVAL

GLASS ASSOCIATION CONVENTION

at St. Louis, Missouri

May 24, 2003

CARNIVAL GLASS AUCTION

at Boonville, Mo. Auction Gallery

June 21, 2003

CARNIVAL GLASS COLLECTION

at Boonville, Mo. Auction Gallery

October 17-18, 2003

18TH AIR CAPITAL

CARNIVAL GLASS CONVENTION

at Wichita, Kansas

**NOTE: FRIDAY, JANUARY 3, 2002 -
5:30 P.M. H.O.A.C.G.A.**

**HOSPITALITY ROOM OPEN TO
EVERYONE AT THE DAYS INN MOTEL**

MICKEY REICHEL
ANTIQUE & AUCTION, L.C.
 516 THIRD STREET
 BOONVILLE, MO 65233-1536



PRESORTED
 FIRST CLASS MAIL
 US POSTAGE PAID
 SEDALIA, MO
 PERMIT 217

RETURN SERVICE REQUESTED

FIRST CLASS MAIL
SPECIAL INVITATION TO:



13*1*****ALL FOR ADC 460

LEE MARKLEY

PO BOX 306

MENTONE, IN 46539-0306

