

CARNIVAL GLASS AUCTION

Saturday, November 16, 2002 9:00 a.m. C.S.T.

★ Collection of Quality and Color ★

SELLER: BURTON REYNOLDS COLLECTION

312



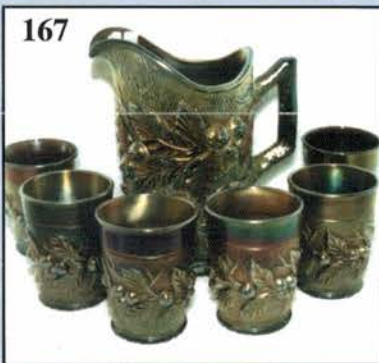
306



310



167



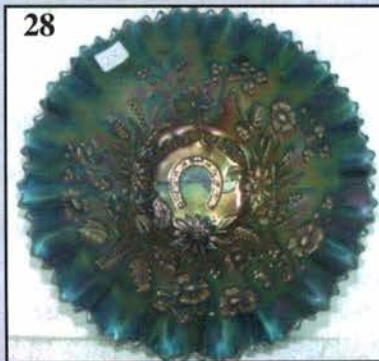
168



166



28



126



164



Held By the Mickey Reichel Antique & Auction L.C.

Office: 660-882-5292 • Home: 660-882-5283

WEB SITE: <http://www.yourauctionpage.com/reichel>

E-mail: mreichel@undata.com



Held Inside the Mickey Reichel Auction Center

1 Mile North of I-70 on Hwy. 5, Exit 101, Boonville, Missouri • 20 Miles West of Columbia, MO on I-70

Preview Friday 12 p.m. - 5 p.m. and 7:30 a.m. - 9:00 a.m. Day of Auction



TERMS: Cash or Good Check, VISA and MasterCard accepted.



3% Clerking Fee on all purchases except for payment of cash or check. Proper I.D. required.

WEB SITE: www.yourauctionpage.com/reichel

ABSENTEE BID POLICY:

WRITE IN BIDS: If you are unable to attend the auction, we will be happy to accept absentee bids which must be received by THURSDAY, NOVEMBER 14, 2002. Don't Delay. E-Mail: mreichel@undata.com

FOR AUCTION PRICE RESULTS: Send \$3.00 and Large S.A.S.E. to 516 Third Street, Boonville, MO 65233-1536

PLEASE NOTE: There is a **\$5 handling charge for each successful bid which will be added to the selling price** for all write-in bids. This is in addition to the cost of postage, insurance and packing. Your write-in bid will be entered just as if you are present and bidding. **Successful bidders will be notified in 1 to 3 days by the auctioneer (so be sure to include your phone number).** Direct mail bids to Auctioneer Mickey Reichel, 516 Third Street, Boonville, MO 65233-1536. Terms: Cash or Check accepted with proper I.D. and Social Security Number and References. Announcements made day of the auction supercede all printed material. Not Responsible for Accidents or Sold Items.

No return on any items once they leave the Auction Center (No Exceptions).****

Call for additional information: 660-882-5292 days or 660-882-5283 evenings before 9:00 p.m.

FAX: 660-882-5292 (evening hours start FAX transmission after beep)

MAIL BIDS: Items are bid on in perfect condition with average or above iridescence OR as listed in the brochures. Bids will not be carried out when damage on an item has been found during the auction.

PEOPLE PRESENT AT AUCTION ARE RESPONSIBLE FOR FINDING ANY PINHEADS, WEAR, SPOTTINESS, MANUFACTURER'S DEFECTS OR ANY OTHER MINOR FLAWS, ETC. *****

NOTE: Read each line, as we have accentuated the type of no particular piece, all are special.

Make Reservations EARLY at one of these local motels:

Days Inn: 660-882-8624 • Comfort Inn: 660-882-5317 • Super 8: 660-882-2900 • Holiday Inn: 660-882-6882

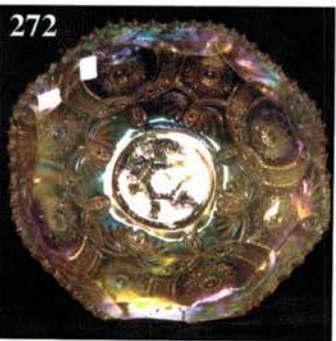
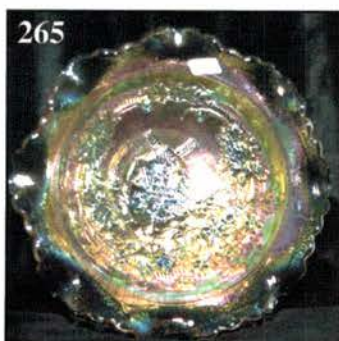
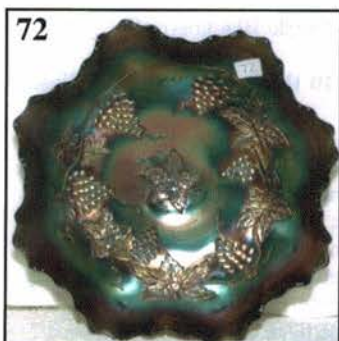
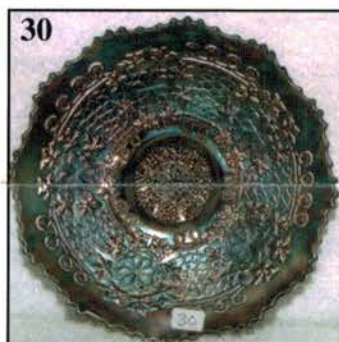
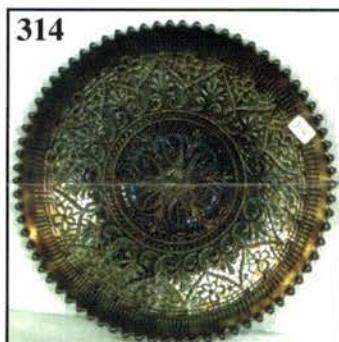
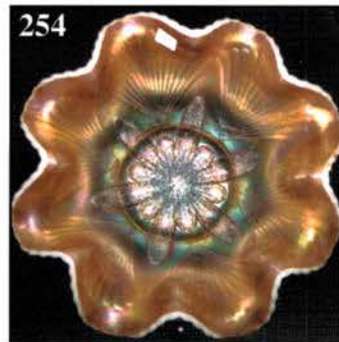
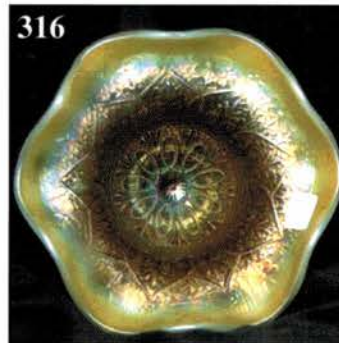
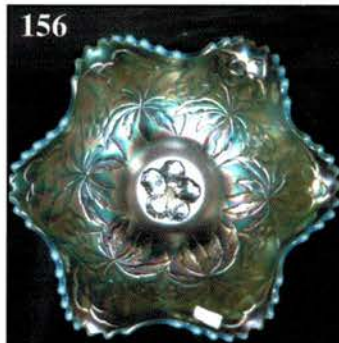
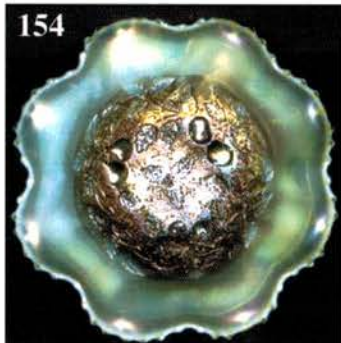
Auction Consists of Rarity, Great Irid. and Variety

THANK YOU FOR ATTENDING TODAY

1. M - Dugan 9" Beauty Vase - Nice One!
2. **G - N 7" Squatty Fine Rib Vase**
3. M - Fenton 6" Squatty Boggy Bayou Vase
4. **B - Fenton 6-3/4" Squatty April Showers Vase, Peacock Tail Interior - Neat Size!**
5. B - **N 7" Drapery Vase - Toe Chipped - Very Rare Color**
6. **G - N 10-1/4" Tree Trunk Vt. Vase - Alaskan Effect**
7. M - Imp. 8" Curled Rib Vase - Great 5-1/2" Opening
8. **B - Fenton 15" Rustic Swung Vase - 4" Base**
9. Great M - Imp. 9-1/4" Ripple Vase
10. **P - N Town Pump - Chip on Handle - Still Desirable**
11. B - Fenton 8-3/4" Flute

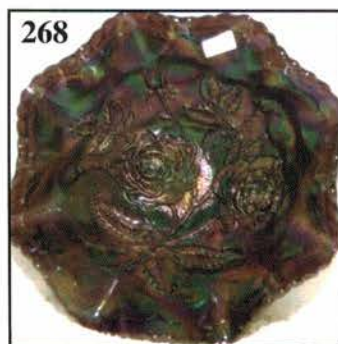
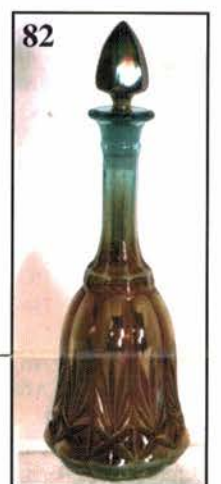
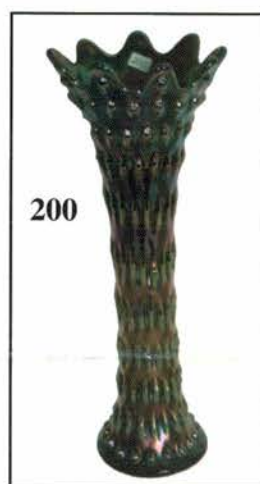
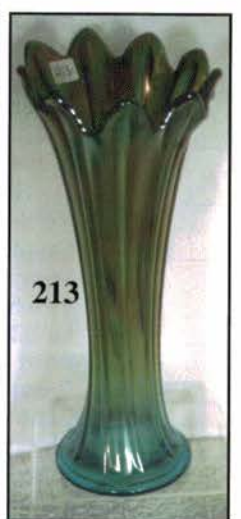
12. **A - N 6-3/8" Squatty Fine Rib Vase - 5" Opening**
13. M - Imp. 5-1/4" Mini Morning Glory Vase - Dark!
14. **Elec. Purple - Imp. 5-1/4" Mini Morning Glory Vase - Great Example**
15. Super M - Imp. 4" Mini Morning Glory Vase - 4" Opening
16. **M - Imp. 8" Morning Glory Stick Vase**
17. M - Imp. 6-3/4" Morning Glory Stick Vase
18. **M - Imp. 7-1/4" Morning Glory Stick Vase**
19. M - Imp. 7-3/4" Beaded Bullseye Vase - 6" Flared Opening - Top of the Line
20. **M - 9-1/2" Footed Prism Panels Vase**
21. PO - Dugan 9" Pulled Loops Vase
22. **G - Fenton 10-1/4" Diamond and Rib Vase**
23. P - Fenton 10-3/4" Diamond and Rib Vase
24. **G - N 11" Thin Rib Vase - Scarce Color**
25. Lav. - **N 10-1/4" Tree Trunk Vase - Great Color**
26. **PO - Westmoreland 9-1/4" JIP Corinth Vase - Very Neat Looking Item**

- _____ 27. M - Imp. Crackle Car Vase w/Metal Bracket
- _____ **27A. M - Imp. Crackle Wall Pocket**
- _____ 27B. Aqua - Westmoreland 7-3/4" Concave Flute Vase - Unusual Color (Rare Color)
- _____ **28. Fantastic B - N PCE Good Luck Bowl - Rib Ext.**
- _____ 29. Clam - Fenton 8" ICS Orange Tree Bowl - Scarce
- _____ **30. B - Fenton 7-1/2" Leaf Chain Plate - Way Above Average**
- _____ 31. A - Fenton 9-1/4", 6 Ruffle Thistle Bowl - Nice Eye Appeal
- _____ **32. Rich M - Fenton 8-1/2", 3 in 1 Thistle Bowl - Scarce Shape and Beautiful**
- _____ 33. Pastel M - Fenton 8-3/4", Collar Base, 8 Ruffle Peacock and Grape Bowl
- _____ **34. B - N Leaf and Beads Rosebowl - Electric Highlights**
- _____ 35. M - Fenton 9", 6 Ruffle Ribbon Tie Bowl - Nice Example
- _____ **36. A - Fenton 9", 6 Ruffle Ribbon Tie Bowl - Scarce Color!**
- _____ 36A. M - N Wild Rose Nut Bowl - Near Pumpkin
- _____ 37. M - N 4-3/4" Acorn Burrs Berry Dishes - 2 x \$
- _____ **38. G - N 7-3/8", 6 Ruffle Fruits and Flowers Bowl - BW Ext. - Tough Piece to Find!**
- _____ 39. B - N 4-1/2" Grape and Gothic Arches Round Berry Bowl - Elec. Highlights
- _____ **40. G - N 4-3/4" Round Singing Birds Berry Bowl - Very, Very Pretty**
- _____ 41. P - Dugan 7" CRE, Tri-Corner Honeycomb Bowl - Electric
- _____ **42. M - Imp. 8-1/2" Round Ftd. Double Dutch Bowl - Normal Foot Roughness**
- _____ 43. B - Fenton 7" ICS Peacock and Dahlia Bowl - Marie Chip
- _____ **44. Clam - Imp. 7-1/2" Lustre Rose Ftd. Fernery - Loaded with Blue and Yellow Irid.**
- _____ 45. A - Fenton Peacock Tail Bonbon - 4 Sides Up - Real Beauty
- _____ **46. M - Fenton 8-3/4", 8 Ruffle, Collar Base Dragon and Lotus Bowl - Above Average**
- _____ 47. B - Fenton 6-1/4", 6 Ruffle Blackberry Spray Hat - Electric Example
- _____ **48. M - Dugan 8-1/4", 10 Ruffle Pony Bowl - Pinks and Blues**
- _____ 49. M - Dugan 8-1/4", 10 Ruffle Pony Bowl - Pinks and Golds - Neat Shape
- _____ **50. Pumpkin M - Fenton 7-3/4" ICS, Spat. Ftd. Peacock and Grape Bowl**
- _____ 51. M - Fenton 9", 8 Ruffle Holly Bowl
- _____ **52. M - Dugan 7" Malaga Nut Bowl - Extremely Scarce In Any Shape or Color**
- _____ 53. Great M - Imp. Grape 9", 8 Ruffle Bowl
- _____ **54. M - Imp. Grape Water Pitcher**
- _____ 55. PO - Dugan 8-1/4", Dome Base, Round, Flared Stippled Petals Bowl - Lots of Opal
- _____ **56. P - N Fruits and Flowers Stemmed Compote - Top Notch**
- _____ 57. M - Fenton 5-1/2", 6 Ruffle, Ftd. Waterlily Bowl
- _____ **58. M - Fenton 5-1/2", 6 Ruffle Ftd. Little Fishes Bowl**
- _____ 59. M - Fenton 5-3/4", ICS Cherry Chain Bowl
- _____ **60. M - Dugan Tri-Corner Windflower Nappy**
- _____ 61. M - Fenton Strawberry Bonbon
- _____ **62. M - N Raspberry Tumblers - 6 x \$ - Well Matched**
- _____ 63. M - Fenton Butterfly and Berry Tumblers - 6 x \$ - Well Matched Group
- _____ **64. Fantastic G - Fenton 9", 8 Ruffle Holly Bowl - Electric**
- _____ 65. M - Fenton 8-3/4", 6 Ruffle Peacock at Urn Bowl - Extra Nice
- _____ **66. B - Fenton 8-1/2", ICS Peacock at Urn Bowl - Scarce Shape**
- _____ 67. A - N 8-1/2" PCE Grape & Cable Bowl - BW Ext.
- _____ **68. P - N 8-1/4", 8 Ruffle Star of David and Bows Bowl**
- _____ 69. P - N Fine Cut and Roses Rosebowl - Radium Silver Finish
- _____ **70. Rare G - Fenton 8", ICS Orange Tree Bowl w/Trunk Center - Super Find**
- _____ 71. M - N Poppy Pickle Dish - Pinks and Yellows - Heat Check
- _____ **72. Dugan Blue - 9", 8 Ruffle Vintage (Grape) Bowl - Scarce Color, Super Find - Few Known**
- _____ 73. Australian - 5" Rd. Crystal Bowls/Marigold Base 2 x \$
- _____ **74. Florentine Vas. IG - Fenton 8-1/4" Laurel Plate - Super Stretchy - Glows Wild**
- _____ 75. Radium M - Imp. Grape 6-1/2" Plate - Pinks and Blues Deluxe Example
- _____ **76. Elec. B - N Peacock at Fountain Tumbler - Splendid Example**
- _____ 77. Lav. - N Grape and Cable Tumbler - Gorgeous Multi Electric
- _____ **78. P - Dugan 6-1/2" Wishbone and Spades Plate - Plain Ext. - Superb Electric**
- _____ 79. M - Imp. Waffle Block Water Pitcher
- _____ **80. Rare G - Omnibus Water Pitcher - Interior Crack - Still (1) of 3 or 4 Known**
- _____ 81. M - Plume Panels and Bows 6-5/8" Tall Goblet - Super Scarce Beauty
- _____ **82. Rare Aqua - Star and Fan Decanter with Stopper - Radium Beauty**
- _____ 83. M - Imp. Waffle Block Tumbler
- _____ **84. Light Olive - Omnibus Tumbler - Pink Marigold Overlay**
- _____ 85. Scarce M - Hobstar and Shield Tumbler
- _____ **86. Cobalt B - Lucille Tumbler - Great Find**
- _____ 87. M - N Grape Arbor Tumbler - Very Pretty Example
- _____ **88. Rare B - Fenton Strawberry Scroll Tumbler - Radium Silver Finish (Neat Look)**
- _____ 89. M - N Grape and Gothic Arches Tumbler - Top Notch
- _____ **90. G - N Grape and Gothic Arches Tumbler - Loaded with Emerald Highlights**
- _____ 91. B - N Grape and Gothic Arches Tumbler - Electric Tints
- _____ **92. Pearlized Custard - N Grape and Gothic Arches Tumbler - Very Scarce**
- _____ 93. Rich M - N Oriental Poppy Tumbler - Near Pumpkin
- _____ **94. Scarce G - N Oriental Poppy Tumbler**
- _____ 95. P - N Oriental Poppy Tumbler
- _____ **96. Frosty W - N Oriental Poppy Tumbler - Pinks and Blues**
- _____ 97. Scarce M - Cosmos and Cane Tumbler - Lg. Base Chip - Really Pretty
- _____ **98. Beautiful W - Cosmos and Cane Tumbler - Pretty Pastels**



- _____ 99. Honey Amber - Cosmos and Cane Tumbler
- _____ **100. Rich M - N Springtime Tumbler - Great Example**
- _____ 101. M - N Peacock at Fountain Tumbler - Beautiful
- _____ **102. Deep P - N Peacock at Fountain Tumbler**
- _____ 103. A - Fenton Blackberry Block Tumbler - Scarce Color - Dandy One
- _____ **104. M - N Cherry and Cable Tumbler - Hard to Come By**
- _____ 105. Pumpkin M - Fenton Blueberry Tumbler - Just Outstanding!
- _____ **106. B - Fenton Blueberry Tumbler - Radium Multi Electric**
- _____ 107. M - Dugan Beaded Shell Tumbler - Another Toughie
- _____ **108. P - Dugan Beaded Shell Tumbler - Multi Electric**
- _____ 109. A - Fenton Paneled Dandelion Tumbler - Great Example
- _____ **110. M - Mlbg. Feather and Heart Tumbler - Ground Base**
- _____ 111. P - N Acorn Burrs Tumbler - Super Irid.
- _____ **112. B - N Grape and Gothic Arches Tumbler - Multi Electric**
- _____ 113. Lime G - N 9-1/4", 3 in 1 Greek Key Dome Base Bowl - Not Iridized - Neat Bowl
- _____ **114. P - N PCE Hearts and Flowers Bowl - Tips Chipped - Scarce Item**
- _____ 115. M - Dugan Big Basketweave Basket
- _____ **116. G - N 8-3/4", 8 Ruffle Strawberry Bowl - BW Ext. - Cinder In Tip**
- _____ 117. Clear Base - Fenton 4-3/4" Butterfly and Berry Bowl - M. Overlay
- _____ **118. G - N Grape and Cable Powder Jar with Lid - Pretty and A Scarce Color**
- _____ 119. M - Mlbg. 9-3/4", 6 Ruffle Whirling Leaves Bowl - Satin Blues and Pinks
- _____ **120. Rare Moonstone - Fenton 9", 8 Ruffle Holly Bowl - Wear In Center**
- _____ 121. B - Fenton 7-3/4", Spat. Ftd., Ruffled Grape and Cable Bowl - Pretty
- _____ **122. Red - Fenton Lotus and Grape Vt. Card Tray Bonbon - Factory Iridized Flaw on Marie**
- _____ 123. P - N PCE Good Luck Bowl - BW Ext. - Scarce and Nice
- _____ **124. B - N 8-1/2", 8 Ruffle Embroidered Mums Bowl**
- _____ 125. Cherry Red - Fenton 8-1/2", ICS Dragon and Lotus Bowl - Large Round Area on Face Not Iridized
- _____ **126. P - N Small Size Grape and Cable Punch Bowl and Base - Multi Electric Beauty**
- _____ 127. G - Fenton 10-3/4" Diamond and Rib Vases - Loaded with Iridescence
- _____ **128. P - N 11" Diamond Point Vase - Great Example**
- _____ 129. White Opal - N 10" Diamond Point Vase - Not Iridized
- _____ **130. Electric B - N 10" Tree Trunk Vase**
- _____ 131. B - Fenton 10-1/4" Rustic Vase - Multi Irid.
- _____ **132. Rich M - Imp. 474 Water Pitcher - Dark and Nice**
- _____ 133. Amber - Imp. 8-1/4" Round Open Rose Bowl
- _____ **134. M - Dugan Stork and Rushes Mug - Detailed**
- _____ 135. Crystal - Imp. Hobstar Flower Compotes - Choice A or B - Non-Iridized
- _____ **136. Crystal - Imp. 8" Octagon Pitcher - Non-Iridized**
- _____ 137. Crystal - Imp. Octagon Tumbler - Non-Iridized
- _____ **138. Crystal - Imp. Octagon 6-1/4" Tall Celery Vase - Non-Iridized**
- _____ 139. Crystal - Imp. Star Medallion 5-3/4" Milk Pitcher - Non-Iridized
- _____ **140. Crystal - Imp. 8 pc. Broken Arches Punch Set - Complete - Non-Iridized**
- _____ 141. Outstanding Amber - Imp. 9" Ripple Vase
- _____ **142. G - N Tri-Corner 5-3/4" Thin Rib Footed Vase - Very Scarce and Unusual**
- _____ 143. M - Soweby African Shield Vase - Very Desirable
- _____ **144. AO - N Daisy and Drape Vase - Pastel Example**
- _____ 145. P - N Graceful 5-3/8" Vase - 6", 6 Ruffle Opening - Splendid Example
- _____ **146. B - Fenton Mikado Ruffled Compote - Always in Demand**
- _____ 147. M - Fenton Mikago 10" Flared Compote - Beautiful Example
- _____ **148. G - Fenton 9-3/4", 3 in 1 Peacock Tail Vt. Bowl - Scarce Size**
- _____ 149. Pumpkin M - Fenton 9" Flared, Round Peacock Tail Bowl - Extra Nice
- _____ **150. G - Fenton 6" Tri-Corner Peacock Tail Plate - A Beauty - Very Scarce Shape**
- _____ 151. Scarce B - Fenton 7", 6 Ruffle Peacock Tail Bowl
- _____ **152. G - Mlbg. 10-1/4", 3 in 1 Peacock and Urn Bowl - Lovely Satin Finish**
- _____ 153. M - Mlbg. Boutonniere Compote - Satin
- _____ **154. AO - N 9" Spat. Ftd., Stippled Three Fruits Medallion Bowl - Loads of Opal - A WINNER!**
- _____ 155. Dugan Blue - 5-3/4" Stemmed, 2 Handle Compote - Floral and Wheat Ext.
- _____ **156. Blue Opal - Westmoreland 9-1/4", 6 Ruffle Carolina Dogwood Bowl - First Rate**
- _____ 157. M - Dugan Persian Garden 6-1/2" Plate - Basketweave Ext.
- _____ **158. B - Fenton 6-1/4", 6 Ruffle Pine Cone Bowl**
- _____ 159. M - Fenton 6" Persian Medallion Plate - Plain Ext. - Above Average Color
- _____ **160. Honey Amber Cosmos and Cane Tumbler - Nice Piece!**
- _____ 161. P - Imp. Grape Tumblers - Choice A, B or C
- _____ **162. W - N 10" ICS Peacock at Urn Bowl - Awesome Color - Loaded with Blues**
- _____ 163. W - N 5-1/2" ICS Peacock at Urn Bowl - Choice A, B, C or D
- _____ **164. P - N 9-3/4" ICS Peacock at Urn Bowl - Super Multi Electric - Way Above Average Color**
- _____ 165. P - N 5-1/2" ICS Peacock at Urn Bowl - Choice A, B, C or D
- _____ **166. G - N Acorn Burrs 7 pc. Water Set - Scarce Color and Popular Pattern**
- _____ 167. P - N Acorn Burrs 7 pc. Water Set
- _____ **168. M - N Acorn Burrs 7 pc. Water Set - Beautiful, Beautiful Set**
- _____ 169. PO - Dugan 7-1/2", 6 Ruffle Stippled Flower Bowl
- _____ **170. M - 9" Right Handed Hand Vase**
- _____ 171. Yellow Vaseline - 8-1/2" Gum Tips Vase - Non-Iridized
- _____ **172. M - Australian 10-1/4" Mid-Size Gum Tips Vase - 3-7/8" Base, 5-1/4" Top - Scarce Color**
- _____ 173. M - Dugan 6-1/2" Persian Garden Plate - Basketweave Ext.
- _____ **174. Australian Crystal - 5-3/4" Oval Golden Poppies Pin Tray**

- _____ 175. Lime Ice Green Vas. - Fenton 5" 2 Row, O.E. Basket - Tiny Micro Flash In Base
- _____ 176. **Red - Fenton 6", JIP 2-Row O.E. Basket - Beautiful Example**
- _____ 177. M - Fenton 6", JIP 2-Row O.E. Basket - Dandy!
- _____ 178. **B - Fenton 6", JIP 2-Row O.E. Basket**
- _____ 179. Smoke - Fenton 6", 2 Row, O.E. Basket - 2 Sides Up - Seldom Seen or Offered
- _____ 180. **A - Fenton 6", 2 Row, O.E. Blackberry Interior 6 Ruffle Basket - Scarce Color**
- _____ 181. Smoky Blue - Fenton 6-1/2", 6 Ruffle, 2 Row O.E. Blackberry - Colorful Pastel Overlay
- _____ 182. **Aqua/Sapphire? - Fenton 6-1/2", 6 Ruffle, 2 Row O.E. Blackberry - Superb Coloration**
- _____ 183. M - Fenton Kittens Cup - Extra Fine Detail, Nice Color
- _____ 184. **Crystal - Imp. 10-1/4", 474 Vase - Non-Iridized - Excellent Piece**
- _____ 185. Electric P - Imp. 10" Ripple Vase - Detail and Color Galore
- _____ 186. **Radium Elec P - Imp. 12-3/8" Ripple Vase - Just Breathtaking**
- _____ 187. Olive - Imp. 10-1/4" Swung Ripple Vase
- _____ 188. **M - Imp. 15" Ripple Vase - Mid Size Beauty - 3-7/8" Base - Fully Detailed and Not Swung**
- _____ 189. M - 12-3/8" Ripple Vase - Hot Pinks and Blues
- _____ 190. **Rich Amber - Imp. 8" Ripple Vase - Luscious Pinks and Blues**
- _____ 191. Helios G - Imp. 8-1/2" Ripple Vase - Very Fine Detail
- _____ 192. **P - Imp. 11-3/4" Beaded Bullseye Vase - Incredible Iridescence All Over!**
- _____ 193. Olive - Imp. 10-1/2" Beaded Bullseye Vase - Radium Silver and Gold Overlay
- _____ 194. **Great M - Imp. 6-1/8" Thin Rib and Drape Vase - Never Seen One This Tall**
- _____ 195. Radium M - Imp. 12-1/2" Parlor Panels Vase - This One Is Pretty
- _____ 196. **Rare M - Imp. 8-1/8" Octagon Vase - Old and A Prime Example**
- _____ 197. Clam - Imp. Balloon Vase - Nice
- _____ 198. **Smoke - Imp. Etched Floral Vase on Balloon Blank - Great Color and Scarce**
- _____ 199. M - Mlbg. 17" Hobnail Vt. Vase - Nine Flame Tips At Top
- _____ 200. **G - Mlbg. 14-3/4" Hobnail Vt. Vase - Nine Flame Tips At Top**
- _____ 201. A - Mlbg. 17-1/2" Hobnail Vt. Vase - Nine Flame Tips At Top
- _____ 202. **B - Mlbg. 16" Hobnail Vt. Vase - Nine Flame Tips At Top**
- _____ 203. M - Mlbg. 16" Hobnail Vt. Vase - Nine Flame Tips At Top
- _____ 204. **W - Fenton 10-1/4" Rustic Vase - Frosty**
- _____ 205. Olive - Fenton 11" Long Thumbprint Vase
- _____ 206. **Lime G - Fenton 7-1/4" Squatty Long Thumbprint Vt. Vase - Starred Base M. Overlay**
- _____ 207. PO - Dugan 6" Squatty Wide Rib Vase - Cuspidor (Pinched In) Top
- _____ 208. **PO - Dugan 5" Squatty Wide Rib Vase - 6" Opening, Jardiniere Type**
- _____ 209. PO - Dugan 6-1/4" Pinched Swirl Vase - Very Fine Example - No Rust
- _____ 210. **Yellow Amber - Westmoreland 8-1/2" Corinth Vase**
- _____ 211. M - N 7" Squatty Diamond Point Vase
- _____ 212. **Pastel M - Stippled Estate 6-1/4" Vase - Wonderful Pastel Irid. - Neat Color**
- _____ 213. Sapphire - N 10-1/4" Thin Rib Vase - Very, Very Scarce
- _____ 214. **Vas. - Stippled Estate 6-1/4" Vase**
- _____ 215. P - N 9" Diamond Point Vase - Unusual Square Top
- _____ 216. **Electric B - Fenton 10", ICS, Ball Ftd. Stag and Holly Bowl - Great Detail**
- _____ 217. Rich M - Fenton 11-1/4", Sq. 8 Ruffle, Ball Ftd. Stag and Holly Bowl
- _____ 218. **M - Fenton Stag and Holly Giant Rosebowl - A Very Scarce Item**
- _____ 219. M - Fenton 9", Round, Ball Ftd. Water Lily Bowl - Excellent Iridescence
- _____ 220. **M - Fenton 8-1/2", Round, Ball Ftd. Fantail Bowl - Loads of Radium Irid.**
- _____ 221. G - Fenton 8", Spat Ftd. 8 Ruffle Two Flowers Bowl
- _____ 222. **G - Fenton 8", 8 Ruffle, Spat Ftd. Dragon and Lotus Bowl - A Nice One**
- _____ 223. Powder Blue - Fenton 8", 8 Ruffle, Ball Ftd. Grape and Cable Bowl
- _____ 224. **M - Fenton 8-1/2", Round, Ftd. Orange Tree Master Berry Bowl - Killer Condition and Color**
- _____ 225. M - Fenton 8-1/2", Collar Base, 8 Ruffle Dragon and Lotus Bowl - Superb Example
- _____ 226. **Lav. Tint Base - Fenton 9", Collar Base, 8 Ruffle Dragon and Lotus Bowl - Nice Irid.**
- _____ 227. B - Fenton 8-3/4", Collar Base, 8 Ruffle Dragon and Lotus Bowl - Spectacular
- _____ 228. **M - Fenton 9", 3 in 1, Collar Base Dragon and Lotus Bowl - Scarce Shape**
- _____ 229. A - Fenton 10-1/4", 6 Ruffle Little Flowers Bowl - Outstanding Coloration
- _____ 230. **Rare Blue - Fenton 8-1/2", 3 in 1 Concord Bowl - Find Another!**
- _____ 231. G - Fenton 8-3/4", 6 Ruffle Concord Bowl - Great Pattern
- _____ 232. **Rare Amethyst - Fenton 9-1/8", 3 in 1, Low Ruffled Ribbon Tie Plate - Marvelous Iridescence**
- _____ 233. A - Fenton 9-1/4", 8 Ruffle, Collar Base Chrysanthemum/Windmill Bowl - Scarce Shape and Color
- _____ 234. **M - Fenton 9", Collar Base, ICS Dragon and Strawberry Bowl - Soft Irid.**
- _____ 235. G - Fenton 8" ICS Leaf Chain Bowl - Beautiful Satin Silver Finish
- _____ 236. **Pumpkin M - Fenton 8-3/4", 6 Ruffle Leaf Chain Bowl**
- _____ 237. W - Fenton 9", 6 Ruffle Orange Tree Bowl - Loaded with Blues - Way Above Average
- _____ 238. **Yellow Vas. - Fenton 6-3/4", 6 Ruffle, Ball Ftd. Lotus and Grape Vt. Bowl - M. Overlay**
- _____ 239. Lime Vas. - Fenton Orange Tree Mug - 2-1/2" Base - Lt. Marigold Overlay - Super Neat
- _____ 240. **Lt. Amber - Fenton Orange Tree Mug - 2-1/2" Base - Different! - Real Pretty**
- _____ 241. Lime Vas. - Fenton Holly Ruffled Compote - M. Overlay
- _____ 242. **Lime Vas. - Fenton Flowers Rosebowl - Exceptionally Scarce Color**
- _____ 243. Vas. - Fenton Persian Medallion Bonbon - 4 Sides Up - Extra Nice



- _____ 244. **Red - Fenton 6-1/4" Holly Hat - 4 Sides Up - Radium Silver Irid. - Neat Effect**
- _____ 245. Yellow Vas. - Fenton 6 Ruffle Holly Hat - Great Pastel Irid.
- _____ 246. **Lav. - Fenton 7:, 6 Ruffle Holly Hat - Splendid Color**
- _____ 247. G - Fenton 7:, 6 Ruffle, Ball Ftd. Lotus and Grape Vt. Bowl - Super Nice
- _____ 248. **Sapphire - Fenton 6-1/4", 6 Ruffle Blackberry Spray Hat - Rare Color and Rare Variety with Two Sprays**
- _____ 249. Lav. Tint Base - Dugan 9", 10 Ruffle Windflower Bowl - Fine, Fine Iridescence
- _____ 250. **Beautiful W - Fenton Pond Lily 4 Sides Up Bonbon - Frosty**
- _____ 251. Stretchy W - Dugan 9-1/4", 10 Ruffle Double Stem Rose Bowl - Loads of Pastel Irid.
- _____ 252. **Frosty W - Dugan Banana Boat Shape Stemmed, 2 Handled Puzzle Compote - GREAT Irid.**
- _____ 253. PO - Dugan Leaf Rays Spade Shape Nappy - Pretty One
- _____ 254. **Fabulous PO - Dugan 10-3/4", 8 Ruffle Petal and Fan Bowl - As Good As They Get!**
- _____ 255. PO - Dugan 7-1/2" Dome Base, 10 Ruffle Nut Bowl - What A Great Shape!
- _____ 256. **PO - Dugan 9" Low 3 in 1 Crimp Apple Blossom Twigs Bowl - Stunning**
- _____ 257. A - Fenton 6-1/4" Round, Flared Persian Medallion Bowl - Scarce Color and Shape
- _____ 258. **PO - Westmoreland 8-3/4", 6 Ruffle Carolina Dogwood Bowl - Very Nice One**
- _____ 259. Great M - Imp. Ruffled Pansy Pickle Dish
- _____ 260. **Amber - Imp. Ruffled Pansy Pickle Dish - Also Above Average**
- _____ 261. P - Imp. Ruffled Pansy Pickle Dish - Electric Highlights
- _____ 262. **Amber - Imp. 9-1/4", Low 8 Ruffle Pansy Bowl - Blues and Pinks**
- _____ 263. G - Imp. Ruffled Windmill Pickle Dish - Silver Radium Finish
- _____ 264. **P - Imp. 8", 8 Ruffle Windmill Bowl - Elec. Highlights**
- _____ 265. Clam - Imp. 8", 8 Ruffle Windmill Bowl - Electric Pastel Irid.
- _____ 266. **Smoke - Imp. 8-3/4", Round, Flared, Scalloped Hattie Bowl - Covered with Blues and Pinks**
- _____ 267. Amber - Imp. 8-1/4", 8 Ruffle Open Rose Bowl - Great Blues and Purples
- _____ 268. **Electric P - Imp. 8", 8 Ruffle Open Rose Bowl - Glorious!**
- _____ 269. Radium Electric M - Imp. 8-3/4", ICS Diamond Lace Bowl
- _____ 270. **Fabulous Pastel M - Imp. 9", ICS Fashion Bowl - High Voltage Radium Electric Hues**
- _____ 271. Great M - Imp. 5" Opening Star and File Rosebowl - Near Pumpkin
- _____ 272. **Clam - Imp. 9", Round, Scalloped Blaze Bowl - Unbelievable Electric Color Inside and Out**
- _____ 273. M - Imp. 6-3/4", Sq. 8 Ruffle 474 Compote
- _____ 274. **Pastel Smoke - 10-1/4", Round, Flared Imp. Grape Collar Base Bowl - Superb Pastel Irid.**
- _____ 275. Fantastic Stretch Red Amberina - Imp. 10-3/4" Floral and Optic Ftd. Chop Plate - One Ft. Chipped, But The Color is All There! - WOW!
- _____ 276. **Fantastic Stretch Red Amberina - Imp. 9" Round, Flared, Ftd. Floral and Optic Bowl**
- _____ 276A. Clam - Imp. 10-5/8" Floral and Optic Ftd. Chop Plate - Electric Rainbow Irid.
- _____ 277. Super White Stretch - Imp. 9" Round, Flared Ftd. Floral and Optic Bowl
- _____ 278. **Deep Aqua - Imp. 6-1/2" Round, Ruffled, Ftd. Floral and Optic Rose Bowl - Lovely Interior Stretch**
- _____ 279. Dark Smoke - Imp. 6-1/2" Round Ruffled Ftd. Floral and Optic Rose Bowl - Rich Radium
- _____ 280. **Super White Stretch - Imp. Chesterfield 7" Tall, 8-1/2" Across Lg. Compote**
- _____ 281. White Stretch - Imp. 11" Wide Panel Plate - Also Great Stretch and Color
- _____ 282. **White Stretch - 10-3/4" Round, Low Flared Bowl - Four Interior Ribs - Nice**
- _____ 283. M. Stretch - Imp. 5-1/2" Tall, 3-1/4" Base, 6" Flared Top Vase - Iron Cross Mark
- _____ 284. **P. Stretch - Imp. 7" Tall, 3-1/4" Base, 4-1/2" Flared Top Vase - Iron Cross Mark**
- _____ 285. M. Stretch - Imp. 5-3/4" Tall, 3-1/4" Base, 4-3/4" Flared Top Vase - Iron Cross Mark
- _____ 286. **Red Amberina Stretch - Imp. 6-1/2" Wide, 3-1/4" Tall, 3-5/8" Base Rolled Rim Compote - with 18 Rays**
- _____ 287. P. Stretch - 8" Imp. Cupped In Low, Low Bowl - Iron Cross Mark - Exc. Color
- _____ 288. **Stretch Pearl Green - Imp. 4-3/4" Art Vase w/Hair Receiver Top - Iron Cross Mark**
- _____ 289. Red Stretch - Imp. 8-1/4", 14 Panel Plate - Delightful Color
- _____ 290. **Aqua Stretch - Imp. Chesterfield Lg. Compote - 7-1/2" Top, 7-3/4" Tall, 4-3/4" Base**
- _____ 291. White Stretch - Imp. Chesterfield Compote - 6" Top, 6-1/4" Tall, 4" Base - Iron Cross Mark - Small Base Chip On Bottom
- _____ 292. **Lav. Smoke Stretch - Imp. 5-1/8" Square Small Ruffled Bowl - Iron Cross Mark**
- _____ 293. Marigold Stretch - Imp. 10-1/4" Flared Out Bowl - Iron Cross Mark
- _____ 294. **Pearl Gold Stretch - Imp. 5-3/4" Art Glass Bulb Vase - Iron Cross Mark**
- _____ 295. P. Stretch - Imp. 4-1/2" Tall, Squatty 5-1/2" Flared Top Vase - Iron Cross Mark
- _____ 296. **P. Stretch - Imp. 3" Opening Art Glass Rosebowl, 1-1/2" Tall, 3" Base - Iron Cross Mark**
- _____ 297. Dark Tangerine Stretch - Imp. Rosebowl - 5" Opening - Iron Cross Mark
- _____ 298. **Rare Sapphire - N 9-3/4" Tree Trunk Vase - 3-1/2" Base, 3-1/2" Top - Fine Example**
- _____ 299. M - N 6-1/2" Squatty Thin Rib Vase - 3-1/2" Base, 4-3/4" Top
- _____ 300. **P - N 6" Giant Squatty Thin Rib Jardiniere - 4-3/4" Base, Whopping 8-1/2" Flared Top - Multi Electric, One of Few Known**
- _____ 301. P - Imp. Grape 4-3/4" Round Berry Bowl - Elec. Highlights - Little Beauty
- _____ 302. **Beautiful M - N 9" Flat Grape and Cable Plate - BW Ext. - Great Pinks and Blues**
- _____ 303. Elec. Smoke - Imp. 4-1/2", 8 Ruffle Plain Jane Bowl

- _____ 304. P - N 8-3/4", 8 Ruffle Good Luck Bowl - Rib Ext. - Multi Elec. Purples and Golds
- _____ 305. P - N Butterfly and Ray 4 Sides Up Bonbon - Above Average
- _____ 306. Multi Elec. P - Imp. 9-1/4" Flat Open Rose Plate - The Pinnacle of Imperial Plates
- _____ 307. P - Imp. Flute Toothpick - One Of The Better Ones
- _____ 308. G - Imp. Flute Toothpick - Scarce Color, Great Example
- _____ 309. M - N 7-1/2" Grape and Cable 2-Sides Up Card Tray Plate - BW Ext. - Hot Pink Center
- _____ 310. Great M - N 9" Peacocks Plate - Rib Ext. - Fine Example - Flat Great Color
- _____ 311. P - Fenton Vintage (Grape) 7", 6 Ruffle Compote - Scarce and Nice
- _____ 312. Extra Nice M - Fenton 9-1/2" Holly Plate - Pinks, Blues, Yellows - Full Color
- _____ 313. M - Imp. Fine Cut And Flower Vt. 6 Ruffle Compote - Clear Base
- _____ 314. Purple - N 9-1/4" Flat Hearts and Flowers Plate Rib Ext. - Way Above Average - Extra Nice
- _____ 315. Russet Stretch - N Round Compote - 7-1/8" Across - Top Notch Color for Russet
- _____ 316. AO - N Hearts and Flowers Ruffled Compote - Lots of Pastel Irid. - Very Poplar Item
- _____ 317. M - 8" Rolled Tumble Up Set
- _____ 318. Rare Green - N PCE Peacocks Bowl - Scarce BW Ext - Emerald Center
- _____ 319. Outstanding M - Fenton 9", Sq. 8 Ruffle, Collar Base Peacock and Grape Bowl
- _____ 320. P - Mlbg. 8-1/4" ICS Trout and Fly Bowl - Excellent Blue and Purple Satins
- _____ 321. M - Tree Bark 8" Plates 2 x \$
- _____ 322. Radium M - 8-1/2: ICS Imp. Three In One Bowl - Lots of Color
- _____ 323. M Flashed - 5-1/2" Round, Flared, Stemmed Nut Bowl, Fenton
- _____ 324. M - 1950's 9" Large Pedestal Fruit Bowl - Louisa Pattern In Center
- _____ 325. M - Imp. Fashion Punch Cups 5 x \$

- _____ 326. M - Imp. Waffle Block Punch Cup
- _____ 327. Clam - Imp. Pillar Flute Ftd. Cream and Sugar Breakfast Set
- _____ 328. Clam - Imp. Frosted Block Open Sugar
- _____ 329. M - Dugan Vineyard Tumblers 4 x \$ - Sold As Is
- _____ 330. Electric B - N Peacock At Fountain Tumbler
- _____ 331. M - Floral and Grape Tumbler - Light Irid.
- _____ 332. M - N Peacock at Fountain Tumbler
- _____ 333. M - Sgnd. IG Windmill Tumbler
- _____ 334. B - Fenton Butterfly and Fern Tumbler - Ground Base
- _____ 335. Sapphire - ACGA 1969 In God We Trust Mug - Choice A or B
- _____ 336. M Flashed - 1950's Eagle 4-1/2" Tall Bank
- _____ 337. Crystal - Sgnd. IG Octagon Salt and Pepper Shakers
- _____ 338. Crystal - Sgnd. IG 474 Butter Dish with Lid
- _____ 339. Crystal - Sgnd. IG 8-5/8" Tall 474 Water Pitcher
- _____ 340. Red Slag - Sgnd. IG 10-1/4", CRE, Ruffled Imp. Grape Bowl - Non Iridized
- _____ 341. M - Sgnd. IG Octagon Large Compote

Approximately 100 pieces sold at end of Auction. Not catalogued due to age, color or condition. Some sold in great box lots for the Collector and/or Dealer.

2002 CALENDAR

January 4, 2003

12TH NEW YEARS

CARNIVAL GLASS EXTRAVAGANZA
at Boonville, Mo. Auction Gallery

April 12, 2003

WORLD WIDE WEB

CARNIVAL GLASS CONVENTION
St. Louis, Missouri

Booking 2003 Auctions
Call Today (1 Pc. or Collection)

NEED QUALITY CARNIVAL GLASS

*"We don't want all the Business,
Just Yours."*

WE DO AUCTIONS RIGHT!!

SPECIAL NOTE:

NO SUNDAY CALLS, PLEASE!
*Winning Absentee Bidders will be contacted
Monday through Wednesday of the week following
the Auction!*

Thank You!

SPECIAL NOTE:

We always strive to bring you the best Carnival Glass we can at our auctions. However, this sale is extra special due to the quality of the iridescence on items. Whether the pieces are common, affordable, scarce, or top dollar, **THE COLOR IS THERE ON THIS SALE.**

For Free Color Catalogs & Information Write:
Mickey Reichel
516 Third Street, Boonville, MO 65233-1536
or Call: 660-882-5292 days or
660-882-5283 evenings
E-mail: mreichel@undata.com

MICKEY REICHEL
ANTIQUE & AUCTION, L.C.
 516 THIRD STREET
 BOONVILLE, MO 65233-1536

PRESORTED
 FIRST CLASS MAIL
 US POSTAGE PAID
 SEDALIA, MO
 PERMIT 217

RETURN SERVICE REQUESTED

FIRST CLASS MAIL
 SPECIAL INVITATION TO:

300



8*17*****MIXED AADC 650

LEE MARKLEY

PO BOX 306

MENTONE. IN 46539-0306



277



305



276



318



64



70



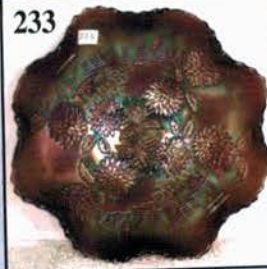
148



230



233



232



216



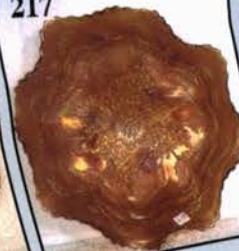
147



319



217



50



304

