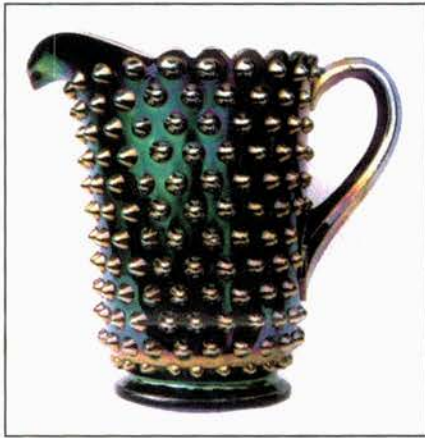




BURNS

AUCTION SERVICE

Great Lakes Carnival Glass Club “Glass Bash” Auction



**10:00 a.m., Saturday
November 2, 2002**

Friday: Preview 6 - 9:00 pm;
Saturday: Preview 8 - 10:00 am

at the

Best Western Midway Hotel

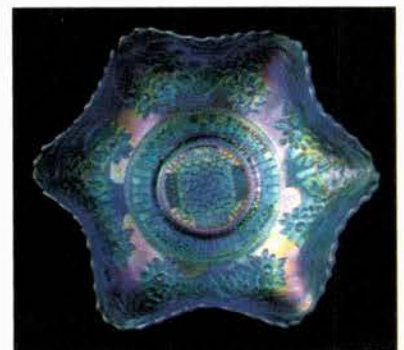
7711 W. Saginaw Highway

Lansing, MI 48917

(Exit 93B off I-69/96)

(517) 627-8471

or Toll Free (877) 772-6100



This is the definitely the best selection of Carnival Glass that we've sold at this convention - ever. This year's Great Lakes Carnival Glass Club's "Glass Bash" Auction will feature the outstanding collection of Gus Van de Perre from Ithaca, Michigan. Gus decided give the club a boost and offered to sell his glass at his Regional convention auction, he has a small but tremendous collection with some super rarities with some super color. We appreciate what Gus did for his home area club, now I hope we can return the favor to him by getting ya'll to attend. There's really no reason not to - there's nothing much else going on and I'm sure you'll find a number of things to your liking.

The Best Western Midway Hotel will host the event. We've had functions here before but for all you rookies it's located right off Exit 93B off I-69/96 just a right hand turn away on Saginaw Highway. For reservations you can call the motel direct at (517) 627-8471 or toll free at (877) 772- 6100. Be sure to do this ASAP. For more info on the Glass Bash call Maxine Burkhardt at (517) 627-7558. This will be one of the last 'Barn'Burners' of the 2002 year - don't miss it!

Mail, phone, fax and email bids due by Wednesday, October 30, 2002.

Burns Auction Service

Tom Burns
P.O. Box 608
Bath, New York 14810
(607) 776-7942 Cell: 731-9302

Bill Richards
44 Water Street, Poland OH 44514
(330) 757-2001
FAX (330) 757-4917

Bill Richards III
2253 Country Lane
Poland, OH 44514
(330) 755-2620

Mail Bids honored under the following conditions:

1. No deposit required. Bidders will take full responsibility to honor any and all bids we execute for them. Payment in full plus postage and handling required after notification and before we ship any item to them.
2. Items are bid on in perfect condition with average or above average iridescence OR as listed in the brochures. Bids will not be carried out when damage on an item has been found during the auction. **PEOPLE PRESENT AT THE AUCTION ARE RESPONSIBLE FOR FINDING ANY PINHEADS, WEAR, SPOTTINESS, MANUFACTURER'S DEFECTS OR ANY OTHER MINOR FLAWS, ETC.**
3. Successful bidders will be notified by collect call from the auctioneer **SO BE SURE TO INCLUDE PHONE NUMBER.**
4. Phone inquiries about the glass or any other questions are welcome.
5. If you have some other person at the auction bidding for you, they must pay for the item before taking it.
6. Any terms or conditions given the day of the auction will supersede any previously published information.
7. Mail, e-mail, fax and phone bids are due by Wednesday, October 30, 2002.
8. There are no guarantees on AS IS or damaged items - 1 chip or a hundred - it's still damaged.

Visit our website at: <http://www.woodslan.com/burnsauction/>

- | | | | |
|-------------------|---|-----------------|--|
| ___ 1. | 1983 I.C.G.A. St. Louis Spittoon - Irid. Burmese (very attractive item) | ___ 22. | 8 1/2" M'burg Blackberry Wreath 6 Ruffled Bowl - Green (has a really nice radium finish) |
| ___ 2. | 4 1/2" Tall 1983 I.C.G.A. St. Louis Whimsey Vase/Tumbler - Irid. Burmese (another very attractive item) | <u>95</u> 23. | Cambridge Inverted Strawberry Candlestick - Green (very scarce; has chips) |
| ___ 3. | Pastel Swan - Celeste Blue | <u>90</u> 24. | Cambridge Inverted Strawberry Candlestick - Mari. (very scarce; has chips) |
| ___ 4. | Pastel Swan - Pink | <u>1400</u> 25. | CAMBRIDGE INVERTED THISTLE HANDLED WATER PITCHER - PUR. (VERY RARE AND VERY DESIRABLE; SUPER IRID.) <i>get per and measurements</i> |
| ___ 5. | Pastel Swan - Ice Green | <u>150</u> 26. | N Memphis Punch Base only - Ice Green (tough part with great color and irid.) |
| ___ 6. | (2) Devilbiss (style) Perfume Atomizers - Mari. (selling choice) | <u>45</u> 27. | Fenton Garland ftd. Rose Bowl - Mari. (nice) |
| ___ 7. | N'wood Concave Diamond Lemonade Pitcher lid only - Celeste Blue (tough part if ya need it) | <u>32</u> 28. | Dugan Grape Delight ftd. Ruffled Rose Bowl - White (nice irid.) |
| ___ 8. | N'wood Concave Diamond Covered Lemonade Pitcher - Russet Green (extremely rare item; pitcher has a crack) | <u>10</u> 29. | Imperial Interior Paneled Rose Bowl - Clamb. (nice irid.) |
| ___ 9. | N'wood Concave Diamond Tankard Tumbler - Russet Green (rare color; very desirable) - <i>50-70</i> | <u>7500</u> 30. | N ROSE SHOW FLAT PLATE - ICE GREEN OPAL. (EXTREMELY RARE AND VERY DESIRABLE; GREAT IRID. WITH OPAL ON THE EDGE) |
| <u>16,000</u> 10. | M'BURG MULTI FRUITS AND FLOWERS HANDLED WATER PITCHER - GREEN (EXTREMELY RARE PATTERN IN AN EXTREMELY RARE COLOR) <i>per & measure</i> | <u>1900</u> 31. | N ROSE SHOW FLAT PLATE - ICE BLUE (VERY RARE AND DESIRABLE WITH GREAT COLOR AND IRID.) |
| <u>1000</u> 11. | M'BURG MULTI FRUITS AND FLOWERS TUMBLER - GREEN (VERY RARE AND DESIRABLE ITEM) | <u>800</u> 31A | N ROSE SHOW RUFFLED BOWL - AQUA OPAL. (A VERY ATTRACTIVE BUTTERSCOTCH EXAMPLE WITH NICE OPAL. ON THE EDGE) |
| <u>45</u> 12. | 7" M'burg Blackberry Wreath Flared Crimped Edge Bowl - Amy. (radium and has a nice shape) | <u>600</u> 32. | N ROSE SHOW VARIANT FLAT PLATE WITH RIBBED EXT. - MARI. (RARE AND DESIRABLE PATTERN; NOT OFTEN SEEN ANYMORE) |
| <u>10</u> 13. | M'burg Sunflower Pin Tray - Green (damaged) | <u>2400</u> 33. | N POPPY SHOW RUFFLED BOWL - GREEN (EXTREMELY RARE AND VERY DESIRABLE; IN PRETTY GOOD SHAPE) |
| <u>110</u> 14. | 8 1/2" M'burg Grape Wreath Variant Ice Cream Shaped Bowl - Amy. (radium and attractive) | <u>2400</u> 34. | N POPPY SHOW FLAT PLATE - ICE GREEN (VERY RARE AND VERY DESIRABLE; NICE COLOR AND IRID.) |
| <u>4000</u> 15. | M'BURG HOBNAIL HANDLED WATER PITCHER - BLUE (EXTREMELY RARE ITEM WITH NICE IRID.; HAS A TINY PINHEAD) | <u>1250</u> 35. | N POPPY SHOW FLAT PLATE - ICE BLUE (VERY RARE AND VERY DESIRABLE; NICE COLOR AND IRID.) |
| <u>850</u> 16. | M'BURG TROUT AND FLY 4 SIDED SQUARE BOWL - MARI. (RARE AND DESIRABLE IN THIS SHAPE WITH A SATINY FINISH) | <u>510</u> 36. | N POPPY SHOW FLAT PLATE - WHITE (VERY SCARCE AND PROBABLY ONE OF THE BETTER EXAMPLES I'VE SEEN) |
| <u>500</u> 17. | 8 1/2 - 9" M'BURG BIG FISH 6 RUFFLED BOWL - AMY. (RADIUM AND VERY DESIRABLE; NICE) | <u>3000</u> 37. | N POPPY SHOW FLAT PLATE - ELEC. BLUE (RARE AND VERY DESIRABLE WITH GREAT COLOR AND IRID.) |
| <u>215</u> 18. | 7 1/2" M'burg Little Stars 6 Ruffled Bowl - Amy. (scarce; satiny) | <u>2800</u> 38. | N POPPY SHOW FLAT PLATE - DK. MARI. (A SUPER PUMPKIN EXAMPLE WITH GREAT COLOR AND IRID.) |
| <u>45</u> 19. | M'burg Fleur de Lei domed 6 Ruffled Crimped Edge Bowl - Amy. (radium and desirable; has a bit of damage) | <u>500</u> 39. | N POPPY SHOW FLAT PLATE - PASTEL MARI. (A REALLY NICE EXAMPLE - A LIGHTER COLOR WITH NICE IRID.) |
| ___ 20. | M'BURG HANGING CHERRIES HANDLED WATER PITCHER - AMY. (RARE AND DESIRABLE; HAS A SATINY FINISH) | | |
| ___ 21. | 6 1/2" M'BURG PEACOCK AT THE URN FLARED PLATE - AMY. (SATINY AND VERY SCARCE; HAS NO BEE AND NO BEADING) | | |

- 250 40. **N PEACOCK AT THE FOUNTAIN HANDLED WATER PITCHER - GREEN (VERY RARE AND DESIRABLE; PERFECT WITH GREAT COLOR)**
- 350 41. **N PEACOCK AT THE FOUNTAIN TUMBLER - GREEN (RARE AND DESIRABLE WITH EXCELLENT IRID.)**
42. N Peacock at the Fountain Handled Water Pitcher - Blue (very scarce; has goldish highlights)
43. (4) Peacock at the Fountain Tumblers - Blue (selling choice; of various color and hues)
44. N Peacock at the Fountain ftd. Ruffled Fruit Bowl - Mari. (scarce; nice color)
- 1400 45. **N PEACOCKS STIPPLED PLATE WITH RIBBED EXT. - ELEC. BLUE (RARE AND DESIRABLE; SUPER COLOR AND IRID.)**
- 1500 46. **N PEACOCKS STIPPLED BOWL WITH P.C.E. AND RIBBED EXT. - ELEC. BLUE (RARE; GREAT COLOR AND IRID.)**
- 445 47. **N PEACOCKS PLATE WITH PLAIN EXT. - GREEN (RARE COLOR IN THIS PATTERN; SATINY HIGHLIGHTS)**
- 1900 48. **N PEACOCKS RUFFLED BOWL WITH RIBBED EXT. - AQUA OPAL. (RARE; NICE OPAL. AND IRID.; SORTA PASTEL)**
- 155 49. N Peacock at the Urn ind. Ice Cream Bowl - Ice Blue (scarce with nice irid.)
- 000 50. **FENTON ORANGE TREE 6 RUFFLED BOWL - CELESTE BLUE (EXTREMELY RARE ITEM WITH SUPER IRID.; A REAL BEAUTY)**
- 155 51. Fenton Orange Tree 6 Ruffled Bowl - Green (rare and desirable color in this pattern)
- 25 52. Fenton Orange Tree 6 Ruffled Bowl - Blue (nice color and irid.)
53. Fenton Orange Tree 8 Ruffled Bowl - Blue/Elec. Blue (really nice example with blue highlights)
- 75 54. **FENTON ORANGE TREE 8 RUFFLED BOWL - RED (RED ITEM THAT LOOKS RED; SATINY AND SUPER-NOT A REAL BLOOD RED - LIGHTER)**
- 000 55. **FENTON ORANGE TREE 8 RUFFLED BOWL - MARI./MOON-STONE (EXCELLENT EXAMPLE WITH AN ATTRACTIVE CAMEL/MARIGOLD OVERLAY)**
- 50 56. Fenton Orange Tree 6 Ruffled Bowl - Mari. (satiny with nice detail)
57. Fenton Orange Tree Ftd. Hatpin Holder - Mari. (scarce with nice color and good feet)
- 170 58. Fenton Orange Tree Flat Plate - Blue (very scarce - has nice color and irid.)
59. Fenton Orange Tree with Trunk Flat Plate - Clamb. (scarce with nice irid.)
- 500 60. **FENTON ORANGE TREE ORCHARD WHIMSEY HANDLED WATER PITCHER - BLUE (ONLY EXAMPLE KNOWN; TOP HAS DIFFERENT SHAPE - GREAT COLOR - A SUPER ITEM)**
- 00 61. **FENTON ORANGE TREE SCROLL TANKARD WATER PITCHER - BLUE (VERY RARE AND VERY DESIRABLE WITH NICE COLOR AND IRID.)**
- 600 62. **FENTON ORANGE TREE SCROLL TANKARD WATER PITCHER - DK. MARI. (ANOTHER EXCELLENT EXAMPLE OF THIS RARE PATTERN)**
- 50 63. European Rising Sun Handled Cider Pitcher - Dk. Mari. (very scarce and desirable with nice color)
- 65 64. European Rising Sun Tumbler - Mari. (scarce with nice color)
- 200 65. **8 1/2" - 9" FENTON LEAF CHAIN 6 RUFFLED BOWL - ICE GREEN (EXTREMELY RARE ITEM; NOT TOO MANY KNOWN IN THIS SIZE - GREAT COLOR AND IRID. - SUPER!)**
- 800 66. **9 1/2" FENTON LEAF CHAIN FLAT PLATE - DK. MARI. (A SUPER EXAMPLE WITH GREAT IRID.)**
- 00 67. **9 1/2" FENTON LEAF CHAIN FLAT PLATE - BLUE (VERY DESIRABLE - ACTUALLY IS QUITE ATTRACTIVE)**
68. 9 1/2" Fenton Leaf Chain Flat Plate - Green (very scarce with nice color and irid.)
69. 9 1/2" Fenton Leaf Chain Flat Plate - White (scarce with nice irid.)
70. 9 1/2" Fenton Leaf Chain Flat Plate - Pastel Mari./Clamb. (nice satiny irid.)
71. **N LEAF AND BEADS FTD. ROSE BOWL - AQUA OPAL. (VERY SCARCE WITH NICE COLOR AND OPAL.)**
- 100 72. N Fine Cut and Roses ftd. Rose Bowl - Green (scarce; nice)
- 25 73. N Fine Cut and Roses ftd. Rose Bowl - Amy. (nice color)
74. Dugan Grape Delight 6 ftd. Ruffled Rose Bowl - Dk. Mari. (really nice color and irid.)
- 2500 75. **IMPERIAL CHRYSANTHEMUM CHOP PLATE - SMOKE (EXTREMELY RARE AND VERY DESIRABLE - TOUGHIE TO FIND; HAS NICE IRID.)**
- 3000 76. **IMPERIAL NUART HOMESTEAD CHOP PLATE - AMBER (VERY RARE AND VERY DESIRABLE WITH GREAT IRID.)**
- 900 77. **IMPERIAL HATTIE CHOP PLATE - PUR. (VERY RARE AND VERY DESIRABLE; TYPICAL GREAT IRID.) ***
78. **IMPERIAL FILE HANDLED WATER PITCHER - MARI. (RARE AND UNDER PRICED; NOT MANY TO BE FOUND)**
79. Imperial Octagon 8pc. Wine Set - Mari. (attractive set)
80. **IMPERIAL GRAPE ROSE BOWL - SIGNED WITH IRON CROSS - AMBERINA (NOT CARNIVAL; RARE AND UNUSUAL; NICE COLORS)**
81. Imperial Field Flower Handled Water Pitcher - Mari. (nice color)
- 65 82. Imperial Grape Tumbler - Smoke (very scarce base color with nice irid.)
83. Imperial Plain Paneled Stemmed Sherbet - Smoke (odd item; nice irid.)
- 75 84. 7" Tall Imperial Miniature Morning Glory Swung Vase - Smoke (scarce with nice irid.)
- 165 85. 9" Imperial Grape low 8 Ruffled Bowl/Plate - Amy. (has nice irid.; scarce)
- 55 86. Imperial Grape Handled Flower Basket - Pastel Mari. (nice irid.)
- 60 87. 6" Imperial Grape Flat Plate - Mari.
- 325 88. Imperial Fashion Breakfast Sugar & Creamer - Mari. (scarce)
- 100 89. 6" Imperial Grape Flat Plate - Green (scarce)
- 700 90. **7 1/2" FENTON LIONS FLAT PLATE - MARI. (RARE ITEM TO FIND; HAS A NICE SATINY FINISH WITH NICE DETAIL)**
- 215 91. 7 1/2" Fenton Horsehead Medallion Flat Plate - Mari. (scarce with nice color and detail)
- 210 92. 7 1/2" Fenton Vintage Grape Flat Plate - Blue (scarce with nice color and irid.)
- 165 93. 7 1/2" N Wild Strawberry Handgrip Plate with Basketweave Ext. - Green (very scarce with nice color and irid.)
- 375 94. **6 1/2" x 6 1/2" SQUARE U.S. GLASS PALM BEACH FLAT PLATE - MARI. (RARE ITEM AND UNUSUAL; IN THE WHIMSEY CATEGORY)**
- 2500 95. **7 1/2" FENTON ILLINOIS SOLDIERS AND SAILORS FLAT PLATE - BLUE (RARE AND DESIRABLE; PERFECT WITH NICE COLOR AND IRID.)**
- 2000 96. **7 1/2" FENTON 1914 PARKERSBURG ELKS B.P.O.E. FLAT PLATE - BLUE (RARE AND DESIRABLE WITH REALLY NICE COLOR AND IRID.)**
- 1000 97. **6 1/2" FENTON 1911 ATLANTIC CITY B.P.O.E. ICE CREAM SHAPED BOWL - BLUE (VERY SCARCE WITH A NICE SATINY IRID.)**
- 75 98. Fenton Paneled Dandelion Tankard Water Pitcher - Green (damaged)
99. Fenton Paneled Dandelion Tumbler - Green (satiny)
- 3900 100. **10" FENTON LITTLE FLOWERS LG. 8 RUFFLED BOWL - RED (VERY RARE AND EXTREMELY DESIRABLE; SUPER RED COLOR; GREAT IRID.)**
- 2750 101. **10" FENTON VINTAGE GRAPE LG. 8 RUFFLED BOWL - RED (ANOTHER EXTREMELY RARE ITEM WITH GREAT RED COLOR - SUPER!)**
102. Fenton Cherry Circles Lg. Handled 4 sided Bon Bon - Blue (nice color)
103. Fenton Strawberry Handled Bon Bon - Mari.
104. 5" Fenton Lotus and Poinsettia ftd. Ruffled Sauce - Mari.
- 1700 105. **FENTON STRAWBERRY SCROLL BULBOUS WATER PITCHER - BLUE (ONE OF MY ALL TIME FAVORITE PITCHERS; HAS GREAT SHAPE AND SUPER IRID. - REALLY NICE)**
- 185 106. Fenton Strawberry Scroll Tumbler - Blue (scarce; nice color)
107. 7 - 7 1/2" Fenton Lions 6 Ruffled Bowl - Mari. (scarce; satiny)
108. Fenton Panther ind. Ruffled ftd. Berry Bowl - Mari.

109. Fenton Bird and Cherries 2 sided Card Tray - Mari.
- 2100 110. **FENTON STARFLOWER HANDLED WATER PITCHER - BLUE (VERY RARE ITEM WITH REALLY NICE COLOR AND IRID. - NICE)** *get this & mean*
111. Fenton Freesia Tankard Water Pitcher - Mari./Clear (scarce with nice enameled decor.)
112. Fenton Freesia Tumbler - Mari. (scarce)
113. Fenton Horsehead Medallion J.I.P. ftd. Bowl - Mari. (nice color and shape)
- 225 114. **FENTON ENAM. COLUMBINE / ZIG ZAG WATER PITCHER - BLUE (VERY SCARCE AND HAS NICE ENAMELED DECOR.)**
- 900 115. **FENTON BLUEBERRY HANDLED WATER PITCHER - BLUE (VERY RARE AND VERY DESIRABLE WITH NICE IRID.)**
116. Fenton Blueberry Tumbler - Blue (scarce; nice color)
117. **FENTON BLUEBERRY HANDLED WATER PITCHER - MARI. (VERY SCARCE ITEM IN THIS COLOR; NICE)**
- 500 118. **FENTON BLACKBERRY BLOCK TANKARD WATER PITCHER - MARI. (VERY SCARCE AND VERY DESIRABLE WITH NICE COLOR)**
- 55 119. Fenton Blackberry Block Tumbler - Mari. (scarce)
- 1200 120. **FENTON CONCORD GRAPE FLARED PLATE - AMY. (RARE ITEM; TOUGH TO FIND WITH A BRIGHT SATINY IRID.)**
121. 9 1/2" Fenton Captive Rose Flat Plate - Blue (scarce with a nice satiny finish)
122. **10" FENTON PERSIAN MEDALLION CHOP PLATE - BLUE (VERY SCARCE; GETTING TOUGH TO FIND)**
123. Fenton Wild Blackberry 6 Ruffled Bowl - Amy. (scarce pattern; sorta silvery)
124. Fenton Apple Tree Tumbler - Blue (scarce)
- 3000 125. **9" FENTON PEACOCK TAIL FLAT PLATE - DK. MARI. (EXTREMELY RARE ITEM; DARK COLOR AND IRID.; REALLY NICE)**
- 165 125A **FENTON DRAGON AND LOTUS FLAT PLATE - MARI. (PERFECT WITH ABSOLUTELY BEAUTIFUL IRID.; A GREAT EXAMPLE OF A TOUGH ITEM)** *Ep 044*
126. 9 1/4" Fenton Heart and Vine Variant Flat Plate - Blue (scarce - one of 3 variations of this pattern)
- 1000 127. **8 1/4" FENTON PEACOCK AND GRAPE ICE CREAM SHAPED BOWL - MARI./MOONSTONE (QUITE A RARE ITEM IN THIS COLOR AND SHAPE; NICE)**
- 65 128. Fenton Horsehead Medallion ftd. J.I.P. Bowl - Blue (scarce pattern and color)
- 35 129. Fenton 2 Row Open Edge 6 Ruffled Hat - Blue (satiny)
- 2800 130. **9 1/4" FENTON ROSE TREE LG. ICE CREAM SHAPED BOWL - BLUE (RARE AND DESIRABLE PATTERN, SHAPE AND COLOR; NICE IRID.)**
- 55 131. **FENTON SHASTA DAISY HANDLED BON BON - BLUE (RARE PATTERN; SELDOM SEEN; NICE COLOR AND IRID.)**
- 100 132. **FENTON HEARTS AND TREES LG. FTD. RUFFLED BERRY BOWL WITH BUTTERFLY AND BERRY EXT. - MARI. (VERY SCARCE WITH NICE COLOR AND DETAIL)**
- 46 133. Fenton Illusion Handled Bon Bon - Blue (scarce; nice)
- 10 134. Fenton Vintage Grape 4 sided Handled Bon Bon - Amy.
- 1200 135. **9" FENTON VINTAGE GRAPE 6 RUFFLED BOWL - AQUA OPAL. (VERY RARE AND DESIRABLE; A NICE EXAMPLE THAT'S HARD TO FIND)**
- 55 136. N Singing Bird Handled Mug - Pur.
- 450 137. **N BEADED CABLE FTD. RUFFLED ROSE BOWL - AQUA OPAL. (SORTA ON THE PASTEL SIDE; NICE OPAL.)**
- 70 138. N Beaded Cable ftd. Ruffled Rose Bowl - Pur. (scarce)
- 35 139. N Beaded Cable ftd. Ruffled Rose Bowl with Ribbed Int. - Amy.
- 450 140. **N ORIENTAL POPPY TANKARD WATER PITCHER WITH RIBBED INT. - WHITE (RARE AND DESIRABLE; NICE IRID.)**
141. **N ORIENTAL POPPY TANKARD WATER PITCHER WITH RIBBED INT. - PUR. (SCARCE WITH THE INTERIOR PATTERN; NICE)**
142. N Oriental Poppy Tankard Water Pitcher with Ribbed Int. - Dk. Mari. (another scarce item with nice color and irid.)
143. **N ORIENTAL POPPY TUMBLER - WHITE (SCARCE WITH PRETTY NICE COLOR AND IRID.)**
144. N Oriental Poppy Tumbler - Pur. (nice color and irid.)
145. N Oriental Poppy Tumbler - Mari.
- 650 146. **N DANDELION TANKARD WATER PITCHER WITH RIBBED INT. - PUR. (VERY SCARCE; NICE COLOR AND IRID.)**
- 95 147. N Dandelion Tankard Water Pitcher with Ribbed Int. - Mari. (another scarce variation; nice color)
- 35 148. N Dandelion Tumbler - Pur. (scarce)
- 450 149. **N GRAPE ARBOR TANKARD WATER PITCHER - PUR. (VERY SCARCE WITH NICE IRID.)**
- 7500 150. **N THREE FRUITS STIPPLED PLATE WITH RIBBED EXT. - AQUA OPAL. (ABSOLUTELY SUPER PASTEL EXAMPLE; A REAL BEAUTY WITH SUPER OPAL.)**
- 5500 150A **N THREE FRUITS STIPPLED RUFFLED BOWL WITH RIBBED EXT. - AQUA OPAL. (A BEAUTIFUL BUTTER-SCOTCH EXAMPLE WITH GREAT IRID.; VERY RARE)**
151. N Three Fruits Stippled Plate with Ribbed Ext. - Mari. (scarce with pretty nice color and irid.)
152. N Three Fruits Plate with Basketweave Ext. - Green (scarce; nice irid.)
153. N Three Fruits 8 Ruffled Bowl with Basketweave Ext. - Amy. (nice satiny irid.)
154. N Three Fruits domed 8 Ruffled Bowl with Basketweave Ext. - Green (nice color and irid.)
- 125 155. **7 1/2" N FRUIT AND FLOWERS 6 RUFFLED BOWL WITH BASKETWEAVE EXT. - ELEC. BLUE (SUPER IRID.; VERY SCARCE)**
- 70 156. 7" N Fruit and Flowers 6 Ruffled Bowl with Basketweave Ext. - Emerald Green (super color and irid.; really nice)
157. N Fruit and Flowers Lg. 8 Ruffled Bowl with Basketweave Ext. - Pur. (scarce; nice)
158. 7 1/2" N Fruit and Flowers 2 sided Card Tray with Basketweave Ext. - Mari. (scarce shape)
- 165 159. N Sunflower ftd. 8 Ruffled Bowl with Meander Ext. - Amy. (nice irid.)
- 2950 160. **N GOOD LUCK 8 RUFFLED BOWL WITH RIBBED EXT. - AQUA OPAL. (ONE OF THE BETTER PASTEL EXAMPLES I'VE SEEN; SUPER!)**
161. N Good Luck 8 Ruffled Bowl with Ribbed Ext. - Mari. (scarce; nice color and irid.)
- 550 162. **N GOOD LUCK STIPPLED 8 RUFFLED BOWL WITH NARROW BASE AND RIBBED EXT. - RENNIGER BLUE (RARE AND DESIRABLE; TOUGH BASE COLOR)**
- 1300 163. **N GOOD LUCK STIPPLED BOWL WITH P.C.E. AND RIBBED EXT. - RENNIGER BLUE (ANOTHER TOUGH ITEM WITH THIS BASE COLOR)**
- 250 164. N Good Luck Bowl with P.C.E. and Basketweave Ext. - Green (scarce; pretty nice satiny finish)
- 2800 165. **N EMBROIDERED MUMS FLAT PLATE WITH RIBBED EXT. - ICE GREEN (THIS HAS TO BE THE BEST EXAMPLE I'VE EVER SEEN; HAS A BRIGHT BLUE FINISH)**
- 800 166. **N EMBROIDERED MUMS 8 RUFFLED BOWL WITH RIBBED EXT. (RARE AND ALWAYS DESIRABLE; NICE IRID.)**
- 675 167. **N EMBROIDERED MUMS 8 RUFFLED BOWL WITH PLAIN EXT. - ICE BLUE (RARE AND DESIRABLE WITH NICE COLOR)**
- 525 168. **N EMBROIDERED MUMS 8 RUFFLED BOWL WITH RIBBED EXT. - BLUE (VERY SCARCE AND DESIRABLE; NICE IRID.)**
- 325 169. **N EMBROIDERED MUMS 8 RUFFLED BOWL WITH RIBBED EXT. - DK. MARI. (VERY SCARCE AND VERY DESIRABLE; SUPER COLOR)**
- 3600 170. **N G & C VARIANT STIPPLED PLATE WITH RIBBED EXT. - SAPPHIRE (A RARE AND SUPER ITEM WITH GREAT BASE COLOR AND IRID.)**
171. N G & C Variant Plate with Basketweave Ext. - Amy. (perfect example with nice irid.)
172. **N G & C STIPPLED PLATE WITH RIBBED EXT. - GREEN (A TOUGHER PLATE TO FIND THAN YOU KNOW; NICE)**
173. **N G & C VARIANT STIPPLED PLATE WITH RIBBED EXT. AND "OLD ROSE DISTILLERY" ADV. - GREEN (RARE AND ALWAYS DESIRABLE; NICE COLOR AND IRID.)**

174. N G & C ftd. Hatpin Holder - Pur. (scarce and desirable item with nice irid.)
175. **N G & C SMALL SIZE FTD. RUFFLED FRUIT BOWL - ICE GREEN (RARE AND DESIRABLE WITH GREAT COLOR AND IRID.)**
176. N G & C ftd. Turned in Centerpiece Bowl - Pur. (very scarce item with nice color and irid.)
177. N G & C Tankard Water Pitcher - Pur. (very scarce size with nice irid.)
178. **N G & C STIPPLED TUMBLER - PUR. (RARE VARIATION; NICE COLOR AND IRID.; A TOUGHIE)**
179. **N G & C STIPPLED TUMBLER - DK. MARI. (ANOTHER RARE VARIATION WITH GREAT COLOR AND IRID.)**
180. **N G & C STIPPLED BOWL WITH P.C.E. AND RIBBED EXT. - AQUA OPAL. (EXTREMELY RARE ESP. BEING A PASTEL EXAMPLE - A GREAT ITEM WITH GREAT COLORS)**
181. N Beaded Cable ftd. Rose Bowl with Ribbed Ext. - Green (scarce)
182. N Daisy and Plume ftd. Ruffled Rose Bowl with Rayed Int. - Green (scarce)
183. **N BUTTERFLY HANDLED BON BON WITH SPIRAL EXT. - ELEC. BLUE (RARE AND DESIRABLE; SUPER COLOR AND IRID.)**
184. **N ROSE GARDEN (?) STIPPLED BON BON WITH BASKETWEAVE EXT. - MARI. (VERY RARE AND PATTERN IN ANY COLOR; THIS IS TOUGHIE)**
185. **N WISHBONE CHOP PLATE WITH BASKETWEAVE EXT. - MARI. (RARE ITEM WITH NICE COLOR AND IRID.; NICE)**
186. **8 3/4" N WISHBONE FTD. PLATE WITH RUFFLES AND RINGS EXT. - PASTEL MARI. (VERY SCARCE BASE COLORED ITEM; NICE IRID.)**
187. N Wishbone ftd. Ruffled Bowl with Ruffles and Rings Ext. - Pur. (nice color and irid.)
188. **N GREEK KEY TANKARD WATER PITCHER - PUR. (VERY SCARCE AND DESIRABLE)**
189. **N DAISY AND DRAPE FTD. FLARED VASE - AQUA OPAL. (RARE AND DESIRABLE WITH NICE OPAL. AND IRID.)**
190. **N TORNADO FTD. CONE SHAPED TRI-CORNERED NOVELTY VASE - ONLY ONE KNOW AT THIS TIME - MARI. (EXTREMELY RARE VARIATION; HAVEN'T SEEN ANOTHER; REALLY NICE COLOR)**
191. **N LATTICE AND POINSETTIA FTD. 8 RUFFLED BOWL WITH RIBBED EXT. - BLUE (RARE AND DESIRABLE PATTERN AND COLOR; REALLY NICE)**
192. **N LATTICE AND POINSETTIA FTD. 8 RUFFLED BOWL WITH RIBBED EXT. - DK. MARI. (ANOTHER RARE ITEM WITH EXCELLENT COLOR AND IRID.)**
193. N Hearts and Flowers 8 Ruffled Bowl with Ribbed Ext. - Ice Blue (scarce; desirable; nice base color)
194. **N SPRINGTIME HANDLED WATER PITCHER - GREEN (VERY RARE AND POPULAR PATTERN; NICE COLOR)**
195. **N NIPPON PLATE WITH BASKETWEAVE EXT. - GREEN (RARE ITEM WITH A NICE SATINY FINISH)**
196. **N STRAWBERRY STIPPLED RUFFLED BOWL WITH RIBBED EXT. - RENNIGER BLUE (RARE COLOR AND SHAPE FOR THIS PATTERN; NICE COLOR)**
197. N Strawberry Bowl with P.C.E. and Plain Ext. - Green (really nice irid.)
198. Imperial Lustre Rose ftd. Round Centerpiece Bowl - Pastel Mari. (super pastel irid. on a rare shaped item)
199. Westmoreland Smooth Rays 6 Ruffled Bowl - Blue Opaque (very rare base color)
200. **DUGAN FARMYARD SQUARE RUFFLED BOWL WITH JEWEL HEART EXT. - PUR. (REALLY NICE EXAMPLE OF A RARE PATTERN IN A RARE SHAPE) ***
201. Dugan Pods and Posies Low 8 Ruffled Bowl/Plate - Pur. (scarce color and shape)
202. **6 1/2" - 7" DUGAN FISHSCALE AND BEADS FLAT PLATE - PUR. (ABSOLUTELY SUPER IRID. - GREAT LOOKING ITEM)**
203. **6 1/2" DUGAN WISHBONE AND SPADES FLAT PLATE - PUR. (ANOTHER REALLY ATTRACTIVE ITEM WITH SUPER IRID.)**
204. 6" Dugan Pods and Posies Flat Plate with Plain Ext. - Pur. (rare and desirable; nice satiny finish)
205. **DUGAN VINEYARD BULBOUS WATER PITCHER - P. OPAL. (RARE AND VERY DESIRABLE - NICE COLOR AND REALLY NICE OPAL.)**
206. Dugan Vineyard Tumbler - Mari.
207. **6" DUGAN GARDEN PATH VARIANT PLATE WITH SODA GOLD EXT. - P. OPAL. (RARE ITEM IN THIS COLOR; NICE OPAL. AND IRID.)**
208. 6 1/2" Dugan Persian Garden Plate with Pool of Pearls Ext. - White (scarce; a super example)
209. 6 1/2" Dugan Fishscale and Beads Flat Plate - White (very scarce with nice irid.)
210. **EUROPEAN GRAND THISTLE LG. HANDLED WATER PITCHER - AMBER (EXTREMELY RARE ITEM IN THIS COLOR; NOT MANY KNOW IN THIS COLOR)**
211. **(3) EUROPEAN GRAND THISTLE TUMBLERS - AMBER (RARE ITEMS IN THIS COLOR; SELLING CHOICE)**
212. **FENTON FLUFFY PEACOCK BULBOUS WATER PITCHER - AMY. (VERY SCARCE ITEM; NICE COLOR AND IRID.)**
213. Fenton Fluffy Peacock Tumbler - Amy (scarce; nice)
214. Fenton Flowers ftd. Rose Bowl - Mari.
215. **M'BURG POPPY STEMMED FLARED COMPOTE - GREEN (A BIT LATE IN THE LISTING; STILL REALLY NICE)**
216. 9" Dugan Fanciful low Ruffled Plate - Amy. (very scarce; satiny)
217. 8 1/2" - 9" Dugan Round Up Low Ruffled Plate - Blue (very scarce; satiny)
218. Dugan Round Up Bowl with 3 in 1 Edge - P. Opal. (scarce shape; nice)
219. **DUGAN BEADED SHELL HANDLED MUG - MARI. (VERY SCARCE BASE COLOR; NICE)**
220. **DUGAN AMARYLLIS TRI-CORNERED MINIATURE COMPOTE - PUR. (VERY SCARCE MINIATURE; SATINY IRID.)**
221. **9 - 9 1/2" DUGAN APPLE BLOSSOM TWIG LOW RUFFLED PLATE - PUR. (SUPER EXAMPLE WITH REALLY NICE IRID.)**
222. Dugan Apple Blossom Twig Low Ruffled Plate - P. Opal (scarce; nice opal.)
223. 9 1/2" Dugan Cherries 8 Ruffled Bowl with Jeweled Heart Ext. - Pur. (scarce item; nice)
224. 10" Tall Dugan Lined Lattice Swung Vase - Pur. (nice irid.)
225. Dugan Thumbprint Stemmed Ruffled Compote - P. Opal.
226. (Maker ?) Kokomo ftd. Rose Bowl - Mari.
227. Poodle Covered Powder Jar - Lt. Mari.
228. Scottie Covered Powder Jar - Lt. Mari.
229. Bambi Covered Powder Jar - Lt. Mari.
230. Surprise !!!

A Carnival Glass Pot Luck Auction

10:30 a.m., Saturday, November 16, 2002

(preview: Saturday, 8:00 a.m.)

at the

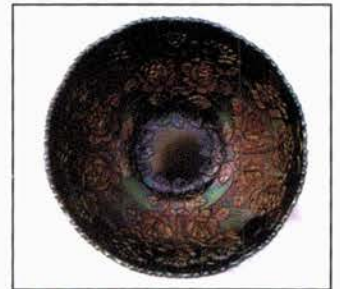
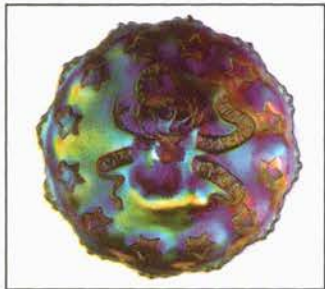
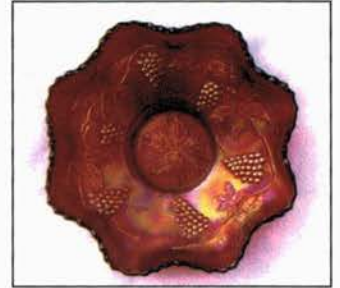
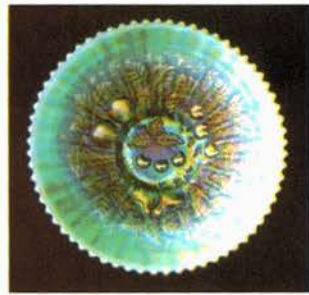
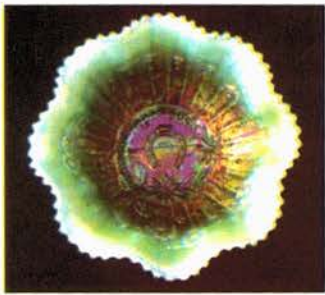
Knights of Columbus Building

321 W. Washington Blvd.

Bath, NY 14810

(just off Exit 38 of I-86 - the Southern Tier Expressway)

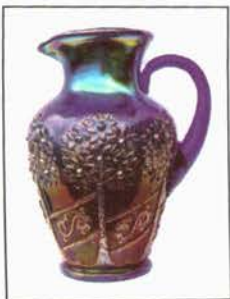
A Pot Luck Auction!!! I have no idea what will be in it...if it's rare or common...if it's perfect or damaged, or what color, shape or size...all I can tell ya is that there'll be hundreds of items and they're all going to sell! Make a point to make the trip - it could be well worth the trouble!



Burns Auction Service
 P.O. Box 608
 Bath, New York 14810

First Class
 US Postage
PAID
 Permit No. 7
 Hammondsport, NY

*Great Lakes
 Carnival Glass Club
 "Glass Bash" Auction!*



LEE MARKLEY
BOX 306
MENTONE IN 46539