

Air Capital Carnival Glass Convention Auction

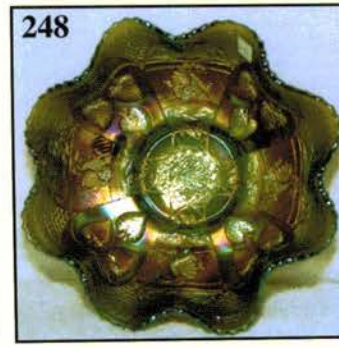
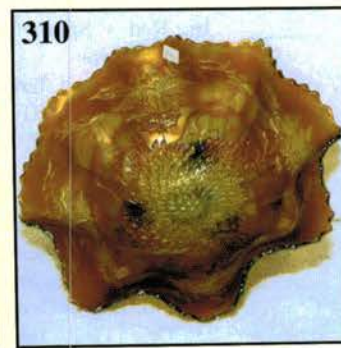
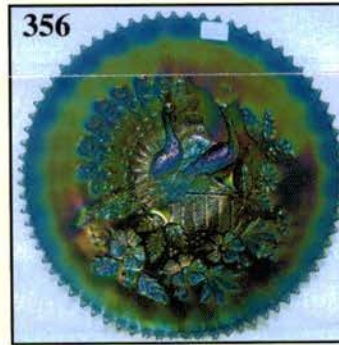
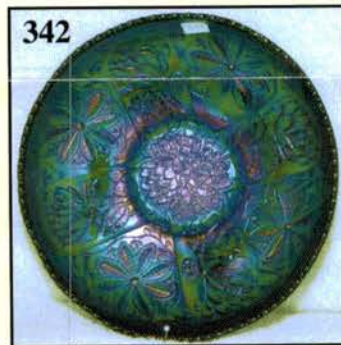
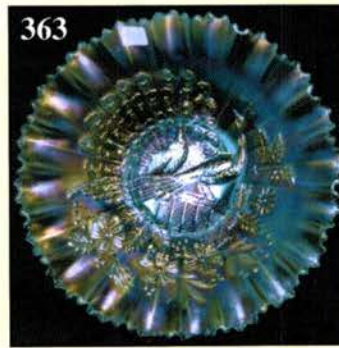
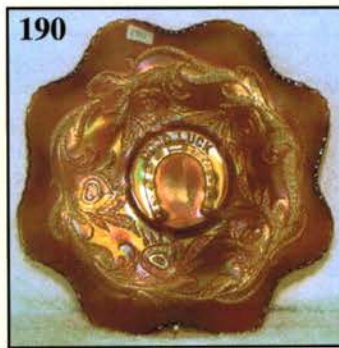
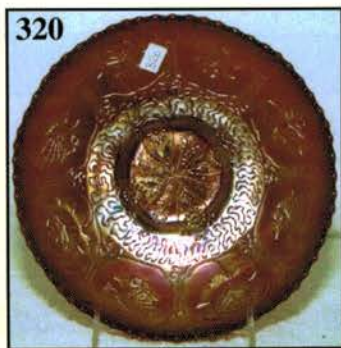
• Held In WICHITA, KANSAS

Friday Evening, October 18, 2002 - 6:30 p.m. C.D.T.

Saturday, October 19, 2002 - 9:00 a.m. C.D.T.

• **World Class Club, A World Class Auction**

• **And Lots of Midwestern Hospitality!!**



Held By the Mickey Reichel Antique & Auction L.C.

Office: 660-882-5292 • Home: 660-882-5283

• **WEB SITE:** <http://www.yourauctionpage.com/reichel>

E-mail: mreichel@undata.com



Held at Holiday Inn • 5500 West Kellogg St. • Wichita, Kansas
Reservations: 800-255-6484 or 316-943-2181

Convention Information: Don Kime - 316-733-8424

Preview Friday: 5:00 p.m. to 6:30 p.m. - Saturday: 7:30 a.m. to 9:00 a.m.

WEB SITE: www.yourauctionpage.com/reichel

ABSENTEE BID POLICY:

WRITE IN BIDS: If you are unable to attend the auction, we will be happy to accept absentee bids which must be received by FRIDAY, OCTOBER 11, 2002. **DON'T DELAY**. E-Mail: mreichel@undata.com

FOR AUCTION PRICE RESULTS: Send \$3.00 and Large S.A.S.E. to 516 Third Street, Boonville, MO 65233-1536

PLEASE NOTE: There is a **\$5 handling charge for each successful bid which will be added to the selling price** for all write-in bids. This is in addition to the cost of postage, insurance and packing. Your write-in bid will be entered just as if you are present and bidding. **Successful bidders will be notified in 1 to 3 days by the auctioneer (so be sure to include your phone number)**. Direct mail bids to Auctioneer **Mickey Reichel, 516 Third Street, Boonville, MO 65233-1536**. Terms: Cash or Check accepted with proper I.D. and Social Security Number and References. Announcements made day of the auction supercede all printed material. Not Responsible for Accidents or Sold Items.

No return on any items once they leave the Auction Center (No Exceptions).****

Call for additional information: 660-882-5292 days or 660-882-5283 evenings before 9:00 p.m.

FAX: 660-882-5292 (evening hours start FAX transmission after beep)

MAIL BIDS: Items are bid on in perfect condition with average or above iridescence OR as listed in the brochures. Bids will not be carried out when damage on an item has been found during the auction.

PEOPLE PRESENT AT AUCTION ARE RESPONSIBLE FOR FINDING ANY PINHEADS, WEAR, SPOTTINESS, MANUFACTURER'S DEFECTS OR ANY OTHER MINOR FLAWS, ETC. *****

NOTE: Read each line, as we have accentuated the type of no particular piece, all are special.

PREVIEW BEGINS AT 5:00 P.M.
FRIDAY'S CONTEMPORARY
FIRST SESSION STARTS AT 6:30 P.M.

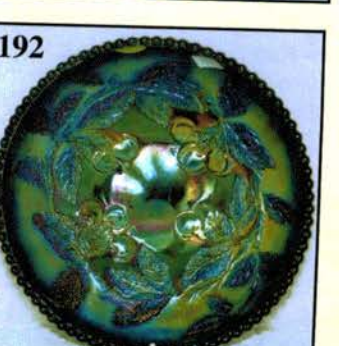
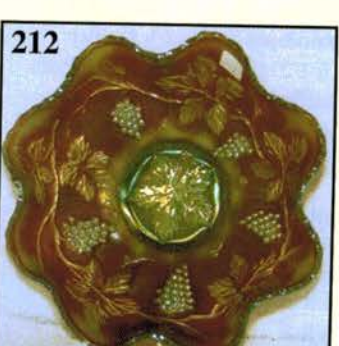
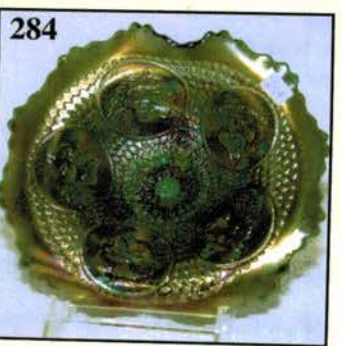
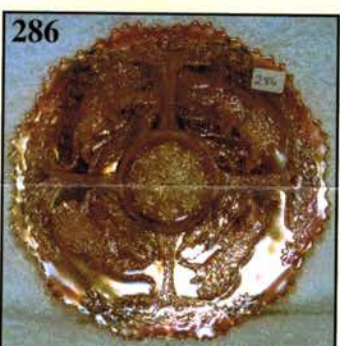
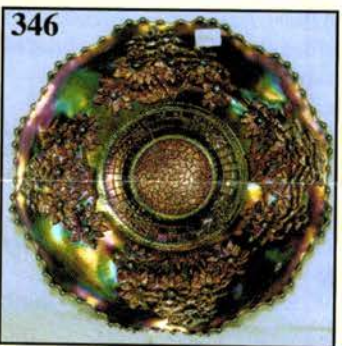
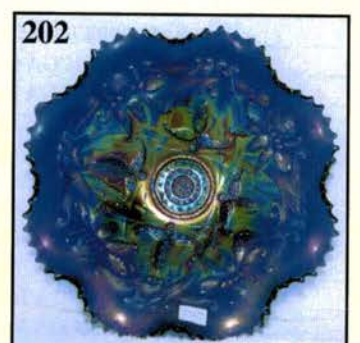
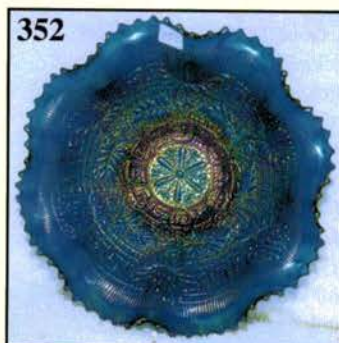
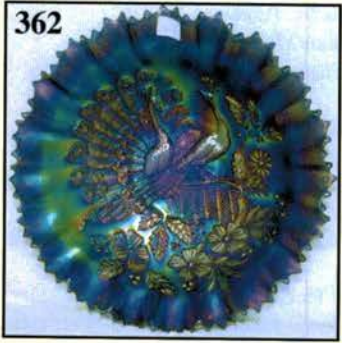
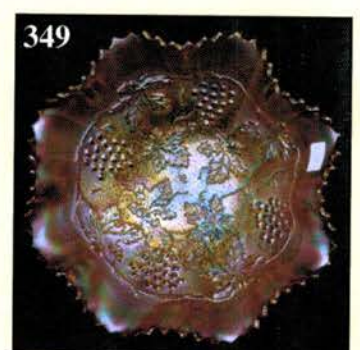
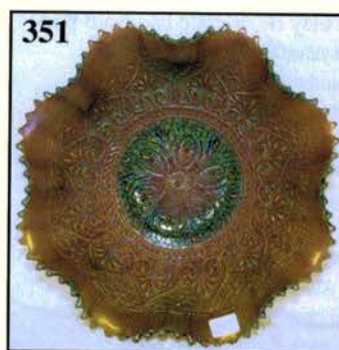
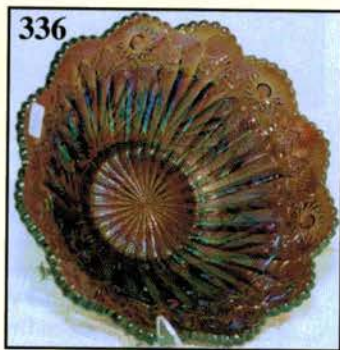
1. Red - 1993 HOACGA Good Luck Plate
2. **BA** - 1972 ACGA 7-3/4" Dayton, Ohio Plate
3. P - 1975 ACGA 5-1/2" Sq. Allentown, PA. Keystone Convention Ashtray - Scarce
4. **M** - Sgnd. **IG** - Preszniks Museum Mug 1969
5. P - Westmoreland 5-1/4" Checkerboard Tumbler
6. **Sea Mist Green** - ACTA 1998 Seacoast Cuspidor
7. Red - 1994 ICGA 5-1/2" JIP Diamond and Rib Vase
8. **Amethyst Opal** - 1997 ICGA Frolicking Bears Tumbler - Limited Item
9. Red - Sgnd. Robert Hansen 4" 49er Tumbler
10. **Cobalt B** - Sgnd. **Robert Hansen Owl Paperweight**
11. B - Sgnd. Bob Hansen Daisy and Button Slipper
12. **Red - Sgnd. Robert Hansen Turkey Toothpick Holder**
13. Cobalt B - Sgnd. Ron H. Bird w/Cherry In Mouth Salt
14. **B - Sgnd. RH** - Bird with Urn Toothpick Holder

15. G - Hansen (?) Ivy Town Pump with Trough - 2 Pieces
16. **Red - Sgnd. Terry Crider Inverted Strawberry Cuspidor**
17. Pink - Sgnd. Terry Crider Inverted Strawberry Cuspidor
18. **Red - Sgnd. IG - Stippled Robin Mug**
19. Red - Fenton Persian Medallion Tri-Corner Rolled Comote
20. **Red- Fenton Peacock Cuspidor - Top Vase - 1988, 117 Made - Very Scarce**
21. P - Fenton Peacock Garden Vase - 1971
22. **Teal - Fenton Flared Top Peacock Garden Vase - 1989, 101 Made - Great Item**
23. Green Opal - Fenton Peacock Garden Vase - 1990
24. **Milk Glass - Fenton Peacock Garden Vase - 1992, Iridized**
25. Pink Opal - Fenton Peacock Garden Vase - 1996
26. **Pink - Sgnd. LIG Loganberry Vase**
27. M - Sgnd. IG Loganberry Vase - Gorgeous
28. **Dark Smoke - Sgnd. IG Loganberry Vase - Great**
29. B - Singleton Bailey 10" Ruffled Farmyard Bowl
30. **Pink Burmese - Singleton Bailey 10" Ruffled Farmyard Bowl**

9:00 A.M. SATURDAY
DAY TWO - SECOND SESSION

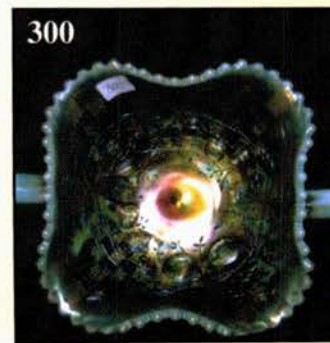
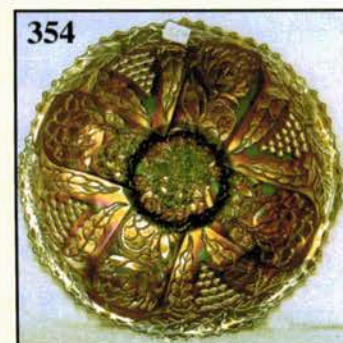
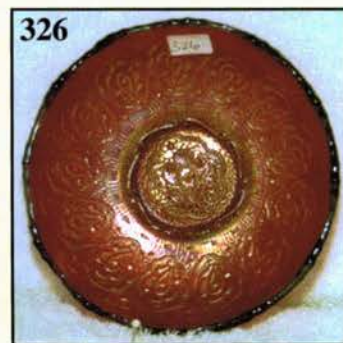
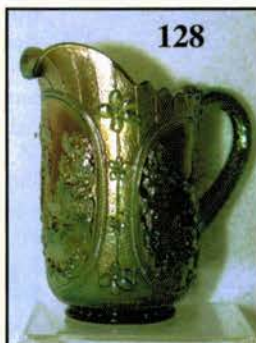
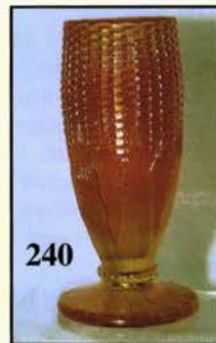
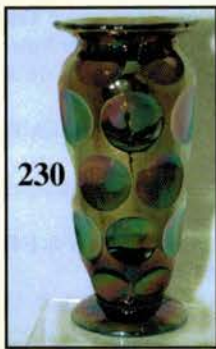
31. Vas. Opal - Singleton Bailey 10" Ruffled Farmyard Bowl
32. **Smoke - Sgnd. IG Chrysanthemum Chop Plate**
33. B - Sgnd. ALIG Chrysanthemum Chop Plate
34. **G - Sgnd. ALIG Chrysanthemum Chop Plate**
35. G - Sgnd. ALIG Homestead Chop Plate
36. **Turquoise Iridized Milk Glass - Stork In Rushes Tumbler - Crider - Super Rare**
37. Sapphire - Sgnd. ALIG Chrysanthemum Chop Plate
38. **AO - Fenton 11" Cherry Chain Chop Plate - Very Scarce - Great Find - Awesome**
39. W - Sgnd. IG Chrysanthemum Chop Plate
40. **Ice B - Sgnd. IG 11" Open Rose Chop Plate**
41. P - 1973 ICGA 9-1/4" Plate - Des Moines, Iowa
42. **Red - 1984 HOACGA Good Luck Fernery Bowl**
43. Red - 1982 ICGA Frolicking Bears Ruffled Cuspidor
44. **AO - 1981 ICGA Frolicking Bears Ruffled Cuspidor**
45. Red - 1978 HOACGA Good Luck Corn Vase
46. **Red - 1978 FACGA Rectangular Butterfly Dresser Dish w/Lid - Rare**
47. B - 1984 ICGA Lions/Orange Tree Rosebowl
48. **Red - 1991 ACGA Inverted Strawberry Sm. Basket**
49. Dark Amber - 1970 ICGA Ashtray
50. **G - 1970 ACGA In God We Trust Vase**
51. M - 1988 ACGA Morning Glory Mini Pitcher
52. **Vas. - 1981 ACGA Beaded Shell Mug**
53. Cobalt B - 1977 LLCGC Kittens Mug
54. **Cobalt B - 1983 LLCGC Picture Frame - #18 of 190**
55. French Opal - 1991 ICGA Beaded Melon Pitcher
56. **Red - Sgnd. IG - 6-1/2" Diamond Lace Rosebowl**
57. M - Sgnd. IG - Octagon Toothpick Holder
58. **Vas. - Indian Toothpick Holder - Sgnd. Joe St. Clair**
59. W - Sgnd. IG - Octagon Salt and Pepper Shakers
60. **M - Sgnd. IG - Imp. Grape Salt and Pepper Shakers**
61. Smoke - Sgnd. IG - Imp. Grape Salt and Pepper Shakers
62. **Ice B - Sgnd. IG - Pansy Ruffled Pickle Dish - Super**
63. Red - Sgnd. IG - Pansy Nappy
64. **B - Mini Handled Basket - Sgnd. Gibson**
65. Amberina - Crackle Spittoon - Sgnd. CCGA - 1993
66. **Ice B - Sgnd. IG - Cornucopia Toothpick Holder**
67. Red - 1991 HOACGA 6-1/2" Peacock and Dahlia Plate
68. **Red - Sgnd. IG - 8" Ruffled Open Rose Bowl**
69. Red - Honeycomb Juice Glass - Sgnd. Ronald Hansen
70. **Red - 5 Repeat Toothpick Holder - Sgnd. Robert Hansen**
71. Red - Tri-Corner Hobstar (?) Ftd. Toothpick Holder - Sgnd. Donna Crider - Rare
72. **Red - Cactus Toothpick Holder**
73. Red - Sgnd. IG - Fashion Toothpick Holder
74. **Red - 1985 HOACGA Bell**
75. Red - V.P.O.E. Elks Paperweight - Rare
76. **Red - 1974-5 ACGA 3-3/8" Cup Plate - Sgnd. Richard Loechinger, Treasurer - Rare**
77. Pink - 1985 Encore Dragon and Lotus Mini Basket
78. **Cobalt B - Panthers Mini Basket - Dorothy Taylor**
79. Pink Burmese - Kittens Mini Basket - 1991 Encore/Taylor
80. **AO - Cactus Ftd. Rosebowl - Levay?**
81. Cobalt B - Cactus Toothpick Holder
82. **B - Sgnd. IG - 6-1/4" Sm. Loganberry Vase**
83. Cobalt B - Sgnd. J St C Grape and Cable Tumbler
84. **Amber - 1971 Amber Beaded Shell Mug**
85. Em. Green - 1992 ICGA 9" Lions Dome-Base Plate

86. **M. Flashed - Water Lily Tumbler**
87. Cranberry Flashed - Water Lily Tumbler
88. **M - N Pretty Panels Enameled Tumbler - Scarce**
89. M - Enameled Iris Prism Band Tumbler
90. **B - Enameled Iris Prism Band Tumbler**
91. A - Enameled Iris Prism Band Tumbler - Near Amber
92. **M - Enameled Wildflower Tumbler - Rib Interior**
93. B - Enameled Ground Cherries Tumbler
94. **B - Enameled Springtime Festival Tumbler - Scarce**
95. W - Enameled Crocus Vt. Tumbler - RARE
96. **M. Flashed - Hawaiian Moon Tumbler**
97. Ice Green Vas. - Enameled Shasta Daisy Tumbler - RARE
98. **Dark M - Enameled Silver Queen Tumbler**
99. B - N Peach Tumbler - Electric Highlights
100. **M - N Waterlily and Cattails Tumbler - Dark and Nice**
101. M - Enameled Dotted Diamond and Daisy Tumbler
102. **Lav. - Imp. Oval Pansy Pickle Dish - Great Electric Highlights**
103. M - Imp. Oval Pansy Pickle Dish
104. **Clam - Imp. Oval Flared Pansy Pickle Dish - Fantastic Iridescence**
105. P - Imp. Oval Ruffled Pansy Pickle Dish - Electric
106. **Teal - Imp. Oval Ruffled Pansy Pickle Dish - Loaded with Color - Very Scarce**
107. M - Imp. 9", 8 Ruffle Pansy Bowl - Pumpkin w/Blues
108. **G - Imp. 8-3/4" Flared Oval Windmill Pickle Dish - Rare Find**
109. Electric P - Imp. 8-3/4" Rd., Flared, Ftd. Double Dutch Bowl - Normal Chips on Feet - Super Irid.
110. **Clam - Imp. 9-1/2", 8 Ruffle Double Dutch Bowl - Very Scarce and Beautiful**
111. Pumpkin M - Imp. 9" Rd., Flared, Ftd. Double Dutch Bowl
112. **Scarce Amber - Imp. 10-1/2" Rd., Flared Ftd. Lustre Rose Center Pc. Bowl**
113. Lime Vas. Imp. Grape Wine Glass
114. **Olive G - Imp. Grape Wine Glass**
115. Helios G - Imp. Grape Wine Glass
116. **Electric P - Imp. Grape 9" Deep, Rd. Master Berry Bowl**
117. Lav. - Imp. Grape 5" Rd. Berry Bowl
118. **P - Imp. Grape 11", 8 Ruffle Master Berry Bowl - Awesome**
119. P - Imp. Scroll Embossed 7-3/4", 8-Scallop Bowl - Plain Ext. - Wonderful
120. **G - Imp. Twins 6-1/4", 6 Ruffle Bowl - Unusual Size and Color**
121. P - Imp. 11" Beaded Bullseye Vase - 3-3/8" Base, 4-1/4" Top
122. **Clam - Imp. 6" Mini Morning Glory Vase - Clear, Frosty Base**
123. Scarce P - Imp. Grape Goblet - Pattern Inside & Out - Splendid Color and Very Scarce
124. **M. Flashed - Floral and Oval Lg. Pattern Glass Goblet - Few Known - Rare**
125. Yellow Vas. - Fenton Orange Tree Goblet - M. Overlay
126. **P - Westmoreland Checkerboard Goblet - Seldom Offered**
127. Dark Smoke - Imp. Grape 10" Handled Basket



128. **G - Imp. Windmill 6-1/4" Milk Pitcher - Great Find**
129. M - Imp. Tiger Lily Water Pitcher - Well Above Average
130. **Smoke - Imp. Hattie 9", 8 Ruffle Bowl - Finest Kind**
131. Amber - Imp. Ripple 8-7/8" Vase - Extra Nice
132. **Pink Afterglow - Imp. Scroll Embossed 9-1/2" Plate - Super Irid. - Unusual Coloring**
133. Super M - Imp. Grape 8-1/4" ICS Bowl - Special Shape, Great Color - Very Neat
134. **Multi Electric B - Fenton Holly 9-1/2" Plate**
135. Helios G - Imp. Open Rose 9" Plate
136. **Lime Vas. - Fenton 9-1/4", 3 in 1 Holly Bowl - Colorful Pastel Overlay**
137. Pumpkin M - Fenton Holly 9-3/4" Plate - WOW!
138. **M - Imp. Oval and Round 5-3/4" Rosebowl**
139. M - Australian Block and Arches Milk Pitcher - What A Find!
140. **G - N 9" Strawberry Plate - BW Ext. - Greens, Yellows & Pinks**
141. Pastel M - N 9" Strawberry Plate - Smooth Ext. - Loaded w/Pinks
142. **A - N 9" Strawberry Plate - BW Ext. - Fine Example**
143. Pastel M - N 9" Strawberry Plate - BW Ext. - Pastel Blues
144. **P - N Butterfly and Rays Bonbon - Above Average**
145. W - Dugan 6-3/4" Persian Garden Plate - Pool of Pearls Ext.
146. **Pumpkin M - Fenton 9-1/2", Sq. 8 Ruffle, Ftd. Waterlily Bowl - A Dandy**
147. G - Fenton 10" Low 6 Ruffle Little Flowers Bowl - Nice Shape
148. **Great M - Fenton 9", 6 Ruffle Ribbon Tie Bowl**
149. M - Fenton Kittens Bowl - 4 Sides Up
150. **Emerald G - Fenton 5-1/2" 2-Row, OE, Square Basket**
151. B - Fenton, 6-1/4", 6 Ruffle Sailboats Bowl - Fine Color, Sharp Strike
152. **Lav. - Fenton, 6-1/4", 6 Ruffle Sailboats Bowl - Good Color and Detail**
153. G - Fenton Holly 6 Ruffle Compote
154. **Vas. - Fenton Goblet Shape Holly Compote - M. Overlay**
155. PO - Dugan Fan Gravy Boat - Loaded with Opal
156. **Dark P - N Nautilus Sugar Bowl - Outstanding Irid. - Sgnd. Northwood In Script - WOW!**
157. G - N Wild Rose Nut Bowl - Better Than Average Color
158. **M - Dugan Seagulls Bowl - Tough To Find This Nice**
159. Beautiful G - Fenton 9", 3 in 1 Dragon and Lotus Bowl
160. **Rare Blue - Dugan 8-1/2" ICS, Dome Base Double Stem Rose Bowl - Few Known**
161. A - N 8-3/4" Grape and Cable Plate - BW Ext. - Very Pretty
162. **A - Fenton 9-1/2", 12 Sided Three Fruits Plate - Top of the Line**
163. G - N 9" Three Fruits Plate - Smooth Ext. - Minor Peeling on Marie
164. **Fantastic Pastel M - N 9" Stippled Three Fruits Plate - Rib Ext.**
165. P - N Beaded Cable Rosebowl - Smooth Ray Int.
166. **P - Dugan Diamond and Sunburst Decanter w/4 Wines - Outstanding Find**
167. B - Fenton Garland Rosebowl - Electric Highlights
168. **Pastel M - N 9" Grape and Cable Plate - BW Ext. - Yellows and Pinks**
169. PO - Dugan 8" Tri-Corner Six Petals Bowl
170. **Rich Amber - Fenton 9" Sq. 8 Ruffle, Collar Base Dragon and Lotus Bowl - Great One**
171. M - Dugan Wreath of Roses Rosebowl - Great Detail and Color
172. **P - N 8-3/4", 8 Ruffle Strawberry Bowl - BW Ext. - Extra Nice**
173. M - Imp. Hobstar Butter Dish w/Lid
174. **M - Diamond Ovals Butter Dish w/Lid - Scarce Find**
175. M - Curved Star Butter Dish w/Lid - Rare
176. **M - Sowerby Covered Swan Butter Dish w/Lid - Near Pumpkin on this Rarity**
177. M - Split Diamond Butter Dish w/Lid
178. **M - Mini Lincoln Drape Kerosene Lamp w/Chimney**
179. M - Mini Lincoln Drape Perfume w/Atomizer
180. **M - Spiral Candlesticks - Pair**
181. Soft G - Westmoreland Shell and Jewel Creamer and Sugar w/Lids
182. **B - Fenton Strawberry Bonbon - A+**
183. A - N PCE Strawberry Bowl - BW Ext.
184. **B - N 9" Stippled Peacocks Plate - Rib Ext. - Outstanding Electric Highlights**
185. Dark M - N Stippled Grape and Cable Punch Cup
186. **G - N 8 Ruffle Peacocks Bowl - Rib Ext. - Great Example - Very Scarce Item**
187. W - Dugan 8-3/4" Roundup Plate - Edge Slightly Turned Up - Superb Irid. - A Beauty
188. **P - N ICS Lg. Peacock at Urn Bowl - Multi- Electric**
189. A - N 9", 6 Ruffle Grape Leaves Bowl - Rainbow Irid.
190. **Rare M - Fenton 9", Sq. 8 Ruffle Good Luck Bowl - Awesome Color!**
191. Pastel M - N 10-3/4", 8 Ruffle Grape and Cable Bowl - BW Ext. - Blues & Yellows
192. **P - Dugan 8-1/4", Rd. Proof Whimsey Cherries Bowl - Jeweled Heart Ext. - Stunning Electric!**
193. Rare Blue - Dugan 9-1/2" Cosmos Vt. Plate - Turned Up Edge
194. **Ice B - N Raspberry Ftd. Candy Dish - Daisy and Plume Ext. - Normal Feet Nicks**
195. G - N PCE Strawberry Bowl - BW Ext. - Lots of Color
196. **B - N 9-1/4" Rose Show Plate - Electric Highlights**
197. G - N 9-1/2" Rose Show Plate - Very Desirable Rarity
198. **P - Imp. Flute Toothpick Holder**
199. G - Imp. Pansy 9", 8 Ruffle Bowl - Base Glows
200. **Rich Amber - Imp. Pansy Ruffled Pickle Dish**
201. Radium M - Dugan 8-1/2", 6 Ruffle Pony Bowl
202. **Rare Blue - N 8 Ruffle, Ftd. Wishbone Bowl - Electric Highlights - Great Find**
203. M - N 8", 8 Ruffle, Ftd. Wishbone Bowl
204. **M - N 9" Low 8 Ruffle Ftd. Wishbone Bowl - A Pretty One**
205. M - Imp. 8", 8 Scallop Shell and Sand Bowl
206. **M - N PCE Strawberry Bowl - BW Ext. - Good Example**
207. G - Fenton 9", 6 Ruffle Autumn Acorns Bowl
208. **A - Fenton 9", 6 Ruffle Autumn Acorns Bowl - Extra Nice**
209. G - Fenton 8-1/2", 3 in 1 Vintage (Grape) Bowl
210. **Rare Persian Blue - Fenton 8" ICS Lotus and Grape Bowl - Few Known**
211. M - Fenton 8-3/4", 8 Ruffle Lotus and Grape Bowl
212. **Rare Persian Blue - Fenton 8-3/4", Sq. 8 Ruffle Vintage (Grape) Bowl - Super One**
213. G - Fenton 8-1/2", 3 in 1 Autumn Acorns Bowl

- _____ 214. **Vas. Opal - Fenton 8-3/4", 3 in 1, Collar Base Peacock and Grape Bowl - WOW!**
- _____ 215. G - Fenton Ruffled Holly Compote
- _____ 216. **M - 13" Candlestick Vase - Maker Unknown - Jain?**
- _____ 217. M - 11-1/2" Candlestick Vase - Maker Unknown - Jain?
- _____ 218. **M - 11" Crimped Top Vase - Indented Rosettes - Jain?**
- _____ 219. Soft Teal - Imp. Ripple 10-1/4" Mid-Size Funeral Vase - 3-7/8" Base, 7" Top, Glows
- _____ 220. **Stunning Amber - Imp. 10" Ripple Vase - Dripping with Pinks**
- _____ 221. Clear Iridized - Imp. Morning Glory 7-3/4" Vase - Unusual!
- _____ 222. **Fantastic B - N 11-3/4" Mid-Size Tree Trunk Vase - Multi Electric - Very, Very Nice**
- _____ 223. White Stretch - Imp. Smooth Panels 8-1/4" Vase - Frosty
- _____ 224. **B - Fenton 20" Rustic Funeral Vase - Front Drops to 16" Tall - Outstanding Magnum Beauty**
- _____ 225. Rare White Stretch - Imp. 4-7/8" Squatty Smooth Panels Vase
- _____ 226. **B - Brockwitz Rose Garden 10-3/4" Cylinder Vase - Tooth Chip - Still A Very Rare Find**
- _____ 227. Rare Radium B - Curved Start 6-3/4" Celery Vase - Electric
- _____ 228. **M. Flashed - European Intaglio Cut Rose (?) Mug - Choice A or B**
- _____ 229. Lime Ice G - N 13-3/4" Thin Rib Swung Vase
- _____ 230. **Rare B - Era 8" Kolor Vase - Radium Electric**
- _____ 231. B - N 10-1/2" Multi-Electric Tree Trunk Vase
- _____ 232. **Lime Vas. Opal - Fenton 5" Squatty Boggy Bayou Vase - Soft M. Overlay - Very Rare**
- _____ 233. Smoke - Imp. Rococo 4-1/2" Vase
- _____ 234. **B - Western Thistle Tumbler - Radium Electric Rarity**
- _____ 235. P - Dugan Heavy Iris Tumbler
- _____ 236. **M - Imp. File Tumbler - Scarce and Nice**
- _____ 237. G - N Grape and Cable Candlesticks - Great Match - 2 x \$
- _____ 238. **BA - Australian Banded Diamonds Tumbler - Scarce**
- _____ 239. M - Australian Banded Diamonds Tumbler - Also Scarce & Pretty
- _____ 240. **M - N Corn Vase w/Stalk Base - Outstanding Example**
- _____ 241. Honey Amber - U.S. Glass Cut Cosmos and Cane Dome Ftd., 8 Scallop Compote, Scarce
- _____ 242. **W - U.S. Glass Cut Cosmos and Cane Dome Ftd., 8 Ruffle Compote - WOW!**
- _____ 243. M - N Hearts and Flowers Ruffled Bowl - Rib Ext. - Nice! - Scarce Color
- _____ 244. **Unusual Base Color - Fenton Holly 9-1/2" Plate - Base Is Olive, Blue, Red - NEAT!**
- _____ 245. Scarce G - Fenton Holly 9-1/2" Plate - Seldom Offered
- _____ 246. **P - N Basket of Roses Stippled Bonbon - Great Piece!**
- _____ 247. Red - Fenton Persian Medallion Bonbon - Above Average
- _____ 248. **G - Fenton 9-1/2", Ball Ftd., 8 Ruffle Dragon and Strawberry Bowl - Very Scarce**
- _____ 249. Pastel Lav. - Imp. 9-1/4" Low Ruffled Pansy Plate - Radium Beauty
- _____ 250. **M - Fenton 9-1/4" Persian Medallion Plate - Gorgeous - First Two Sides Up example Offered!**
- _____ 251. A - Fenton 6" Tri Corner Peacock Tail Sm. Plate - Tough to Find
- _____ 252. **Powder B - Fenton Spat. Ftd. 8", 8 Ruffle Chrysanthemum/Windmill Bowl - Neat Color**
- _____ 253. M - Fenton 9-1/2", 12 Sided Three Fruits Plate - Way Above Average
- _____ 254. **P - N PCE Good Luck Bowl - Rib Ext. - Brilliant Multi Electric - Hot Pattern**
- _____ 255. M - N PCE Good Luck Bowl - Rib Ext. - Loaded with Pinks & Blues
- _____ 256. **B - N PCE Good Luck Bowl - Rib Ext. - Great Greens and Blues**
- _____ 257. Pumpkin M - N Ruffled Good Luck Bowl - Rib Ext.
- _____ 258. **G - N Ruffled Good Luck Bowl - Rib Ext. - Vivid Pinks - Scarce, Scarce Color**
- _____ 259. P - N Ruffled Good Luck Bowl - BW Ext. - Purples and Golds
- _____ 260. **B - N Ruffled Good Bowl - Rib Ext. - Electric Highlights**
- _____ 261. P - N Ruffled Good Luck Bowl - Rib Ext. - Fantastic Multi Irid.
- _____ 262. **G - N Ruffled Good Luck Bowl - BW Ext. Above Average - Scarce Color**
- _____ 263. B - N Ruffled, Stippled Good Luck Bowl - Rib Ext., Thin Base
- _____ 264. **B - N Ruffled, Stippled Good Luck Bowl - Rib Ext., Normal Base**
- _____ 265. Pastel M - Ruffled Stippled Good Luck Bowl - Rib Ext. - Pinks Galore
- _____ 266. **Rare Purple - N 9-1/4" Stippled Good Luck Plate - Rib Ext, Thin Base - Here's Your Chance**
- _____ 267. Super M - N 9-1/4" Stippled Good Luck Plate - Rib Ext, Thin Base - The One! (Great)
- _____ 268. **M - N 9" Good Luck Plate Vt. - BW Ext. - Best I've Seen**
- _____ 269. M - N PCE Grape and Cable Bowl - BW Ext.
- _____ 270. **G - Fenton 8-1/2", 3 in 1 Coral Bowl - Scarce Pattern, Shape and Color**
- _____ 271. Soft B - Fenton Collar Base - 8-3/4", Sq. 8 Ruffle Peacock and Grape Bowl
- _____ 272. **G - Fenton 8-1/2", 3 in 1 Captive Rose Bowl - Enticing Iridescence**
- _____ 273. G - Fenton 8", 6 Ruffle Peacock Tail Bowl - Neat Size
- _____ 274. **G - Fenton 8-1/4", ICS Leaf Chain Bowl - Very Pretty Item**
- _____ 275. G - Fenton 9", Sq. 8 Ruffle Holly Bowl - A Dandy
- _____ 276. **Clam - Fenton 9-1/2" Leaf Chain Plate - Great Multi-Color - Extra Quality**
- _____ 277. A - Fenton Spat Ftd., 7-1/2", ICS Grape and Cable Bowl - Different Shape and Size
- _____ 278. **M - Fenton 6-1/2", ICS Lions Bowl - Very Detailed and Colorful**
- _____ 279. Lav. - Fenton 6", 6 Ruffle Pepper Plant Hat - Scarce Color
- _____ 280. **Outstanding Lime Vas. - Fenton, 8-1/2", Sq. 8 Ruffle Thistle Bowl - Few Examples**
- _____ 281. M - Fenton 9", 6 Ruffle Concord Bowl - Always In Demand
- _____ 282. **Radium G - Fenton 7-1/2", Ball Ftd., Sq. 8 Ruffle Horse Medallion Bowl**
- _____ 283. Great Satin G - Fenton 7-1/4" Ball Ftd., Sq. 8 Ruffle Horse Medallion Bowl
- _____ 284. **Teal - Fenton 8" JIP, Ball Ftd., Horse Medallion Bowl - One Of Few Known**
- _____ 285. Yellow Vas. - Fenton 7-1/4", 6 Ruffle Vintage (Grape) Bowl - M. Overlay
- _____ 286. **M - Fenton 7-3/4" Lions Plate - Incredibly Detailed and Radium - Very Scarce Plate**
- _____ 287. G - Fenton Birds and Cherries - 4 Sides Up Bonbon - Great Strike
- _____ 288. **B - Fenton Birds and Cherries - 4 Sides Up Bonbon - Another Great Piece**



289. A - Fenton Birds and Cherries 6 Ruffled Compote - Scarce Color
290. Frosty W - N Daisy and Drap Vase (Scarce)
291. Rich M - Fenton Garland Rosebowl - Very Pretty
292. Frosty W - N PCE Nippon Bowl - Scarce BW Ext.
293. Frosty W - N Fine Cut and Roses Rosebowl - Fancy Int.
294. Ice G - N 5-3/4" ICS Grape and Cable Berry Bowl - BW Ext. - Rare Color and Shape
295. Radium G - Mlbg. 6 Ruffle Peacock Tail vt. Compote - Outstanding
296. Vas. Florentine Ice Green - Dugan Windflower 7" Tri-Corner Nappy - Few Known
297. M - Westmoreland 8", Six Scallop, Rd. Daisy Wreath Bowl - Scarce in Marigold
298. Ice B - N 5-3/4", ICS Peacock and Urn Berry Bowl - Blues and Pinks
299. G - N Grape and Cable Hatpin Holder - Near Emerald
300. Pastel AO - N Fruits and Flowers Stemmed Bonbon - Top Notch Example
301. Electric B - N Fruits and Flowers Stemmed Bonbon
302. B - N Ruffled Hearts and Flowers Compote - Multi Electric and Scarce Color
303. M - N Ruffled Hearts and Flowers Compote
304. Lime Vas. - Fenton Strawberry Bonbon - M. Overlay - Scarce Color & Neat
305. Dark B - N Singing Birds Mug - Extra Nice
306. A - N 10-1/2", Ball Ftd. Grape and Cable Fruit Bowl - Gorgeous Electric - Beauty
307. Rich M - Fenton, Collar Base, Sq. 8 Ruffle 9" Peacock and Grape Bowl
308. Pastel M - N 9-1/4" Rose Show Plate - So Nice and So Close to Clambroth
309. W - Dugan 9" Low Ruffled Roundup Plate - Pretty
310. Smoke - Fenton 10-1/2", Ball Ftd., 8 Ruffle Stag and Holly Bowl - Eye Catching Unusual Irid - Rare
311. P - N 8-3/4", 8 Ruffle Greek Key Bowl - BW Ext. - Elegant Multi Electric
312. Red - Fenton 6-3/4" 2 Row, OE Blackberry Basket
313. Awesome P - Dugan 9", Dome Base, 10 Ruffle Flowers and Frames Bowl
314. Super Cherry Red Base - Fenton 9", 8 Ruffle Vintage (Grape) Bowl - Great Base Color
315. P - Imp. 8-1/4" Heavy Grape Plate - Stunning Multi Electric
316. P - Imp. 10-1/4" Homestead Chop Plate - Incredible and Detailed Plate - Wow Wee!
317. Pastel M - N 9" Flat Hearts and Flowers Plate - Rib Ext. Thin Base - Fantastic Irid.
318. Rich M - Fenton 9-1/2" Peacock at Urn Plate - Great Piece - Way Above Average
319. M - Soweby Wickerwork 8" Plate or Low Bowl - Nice Find
320. Red w/Opal Tips - Fenton 8", ICS, Collar Base Dragon and Lotus Bowl - Very Rare
321. A - N 8" Grape and Cable Card Tray Plate - BW Ext.
322. Rare Red - Fenton 7", 6 Ruffle Vintage (Grape) Bowl - Few Known This Size
323. Electric B - N Grape and Cable Bonbon - BW Ext.
324. Red - Fenton 6-1/4", 6 Ruffle Sailboats Bowl
325. Pastel M - N 5-1/2", ICS Peacock at Urn Bowl - Pinks and Blues
326. Red - Fenton 5-3/8", ICS Persian Medallion Bowl - Rare Size and Color - Great Find
327. Great G - N Fruits and Flowers Stemmed Bonbon
328. Scarce M - N Stippled Fruits and Flowers Stemmed Bonbon - Great - Top Notch
329. M - Australian 9-1/2", 16 Ruffle Swan Master Bowl - Radium Dandy
330. Lav. - Mlbg. 6" Peacock Plate (?) - 1-3/8" Off Table, No Bee, No Beads
331. M - Dugan 8-1/2", 10 Ruffle Brooklyn Bridge Adv. Bowl - Striking Radium
332. Ice G Vas. - Dugan 8-1/4", 10 Ruffle Pony Bowl - Stretchy
333. W - Dugan 9", Turned Up Fanciful Plate - Loaded w/Blues
334. Red - Fenton Lg. Orange Tree Mug - Scarce Color, Minor Int. Spotting
335. Brick Red - Fenton 9", 8 Ruffle Holly Bowl
336. A - Mlbg. 8-1/2", 12 Scallop, Rd., Deep, Flared Rays and Ribbons Bowl - Sparkling, Vibrant Radium - 3-1/2" Deep! - Rare Shape
337. M - Mlbg. Leaf and Little Flower Sm. Ruffled Compote
338. Pumpkin M - N Harvest Poppy Ruffled Compote - Clear Base - Rare Pattern
339. Pumpkin M - Imp. Grape 9" Ruffled Bowl or Plate - Radium Irid.
340. B - N 9" Stippled Three fruits Plate - Rib Ext. - Multi Electric
341. M - N Collar Base, 8-3/4", 8 Ruffle Stippled Three Fruits Bowl - Hot Pink Center
342. Electric Blue - Fenton 9", Ball Ftd., Low ICS Waterlily Bowl - A Show Stopper!
343. G - Sgnd. Ron Hansen Toothpick Holder - Flute-like Pattern (Neat)
344. B - Fenton 9-1/2", 3 in 1 Ten Mums Bowl - Super Blue Iridescence - Great Find
345. A - Dugan 8-1/2", Flat Fanciful Plate
346. Multi Elec. B - Fenton 9-1/2" Flat Orange Tree Plate - Vivid Colors - WOW!
347. Pastel M - N 9" Collar Base, 8 Ruffle Stippled Three Fruits Bowl - Super Find
348. P - N 9", Collar Base, 8 Ruffle Stippled Three Fruits Bowl - WOW
349. M - N 8-1/2", 8 Ruffle, Stippled Grape and Cable Vt. Bowl - Rib Ext. - Superb Example
350. G - N 8-3/4", 8 Ruffle, Stippled Grape and Cable Vt. Bowl
351. Lav. - N 9", 8 Ruffle Hearts and Flowers Bowl - Gorgeous Bowl - Very Scarce
352. Electric B - N 8 Ruffle Embroidered Mums Bowl - This one will talk to you!
353. Pumpkin M - N 8-3/4", 8 Ruffle, Ftd. Poinsettia and Lattice Bowl - Exquisite
354. G - Fenton 9-1/4" Lotus and Grape Plate - Rare and Beautiful
355. B - Fenton 9-1/4" Lotus and Grape Plate - Rare and Beautiful
356. Electric B - N 9" Peacocks Plate - Rib Ext. - Loaded with Color
357. M - N 9-3/4", ICS Peacock at Urn Bowl - Covered in Pinks and Blues
358. Deep Ice G - N Grape and Cable Centerpiece Bowl w/Points Straight Up - Blue Irid.
359. RARE AO - Fine Cut and Roses Rosebowl - Worth The Wait!
360. Pastel O - N Ruffled Peacocks Bowl - Always In Demand

- 361. Dark M - N PCE Peacocks Bowl
- 362. B - N PCE Peacocks Bowl - Magnificent Multi-Electric
- 363. Dark Ice B - N PCE Peacocks Bowl - Very Scarce
- 364. P - N 8 Ruffle Peacocks Bowl - Multi Electric Beauty
- 365. M - N 9" Peacocks Plate - Rib Ext. - Very Desirable Piece
- 366. M - Miniature Hobnail Cordian Set - Complete w/Underplate - Outstanding, Rare Find
- 367. M - Ranger Pin Dish - Tough to Find
- 368. Great M - Band of Stars Decanter - Rare
- 369. Great M - Band of Stars Wine Glass - Also Rare
- 370. M - 10-1/2" Band of Stars Underplate for Wine Set - Rare, Too!
- 371. M - European 12" Oval Dresser Tray with Two Powder Jars w/Lids - Attractive Set
- 372. Rich M - Ranger 6-1/2" Cologne Bottle w/Stopper
- 373. Rich M - Ranger 5-1/2" Cologne Bottle w/Stopper
- 374. A - Fenton 8 Ruffle Peacock at Urn Bowl - Scarce and Great Irid.
- 375. M - Fenton 8 Ruffle Peacock at Urn Bowl - Super!
- 376. G - Fenton 8" ICS Peacock at Urn Bowl - Scarce Shape and Color
- 377. Pumpkin M - 8-1/4" ICS Peacock at Urn Bowl
- 378. Scarce A - Fenton 9", 3 in 1 Peacock at Urn Bowl - Tough Shape and Base Color
- 379. Ice G Vas. - Pastel Swan Salt
- 380. Electric B - N 5-1/4" ICS Peacock at Urn Bowl
- 381. P - N 5-1/2" ICS Peacock at Urn Bowl - Great Multi Electric
- 382. B - Fenton 5", Rd. Panther Ftd. Berry Dish - Exceptional Color and Detail
- 383. M - Dugan Vintage (Grape) Powder Jar w/Lid
- 384. M - Fenton Orange Tree Powder Dish w/Lid - Chip on Lid - Great Color
- 385. M - Orange Tree Punch Cup
- 386. Emerald Green - Imp. 474 Punch Cup - Wow!
- 387. Rich M - Imp. 474 Punch Cup - Pinhead on Rim
- 388. M - Imp. Royalty Punch Cup - Rare Beauty
- 389. B - Fenton Wreath of Roses Punch Cup - Grape Int. - Choice A or B
- 390. G - N Grape and Cable Punch Cup - Near Emerald
- 391. M - Westmoreland Orange Peel Punch Cup
- 392. M - Dugan Stork and Rushes Punch Cup
- 393. M - Dugan Lattice and Daisy Tumbler
- 394. Elec B - Dugan Peacock at Fountain Tumbler

- 395. M - Imp. Fashion Tumbler
- 396. Scarce A - Fenton Fluffy Peacock Tumbler - Lovely Radium
- 397. M - Dugan Floral and Grape Tumbler - Base Nick
- 398. P - Dugan Maple Leaf Tumbler
- 399. M - Imp. Windmill Tumbler
- 400. M - Imp. Octagon 4-3/8" Tumbler - Variant, Has The Foot
- 401. Dark M - Fenton Paneled Dandelion Tumbler
- 402. G - Imp. Lustre Rose Tumbler - This One Is Pretty
- 403. M - Fenton Scale Band Tumbler - Scarce
- 404. Rich M - N Singing Birds Mug
- 405. Glowing Stretch G - Central Glass Co. 7" Candlesticks - Pr. - Plate #5

THANK YOU FOR ATTENDING TODAY

**JOIN AIR CAPITAL CARNIVAL CLUB
ONLY \$15.00 PER YEAR**

If you are interested in becoming a member, please fill out the form below and mail your payment to:

Randy Thach
4500 N. Ridge Road
Wichita, Kansas 67205

NAME _____

ADDRESS _____

TELEPHONE _____

E-MAIL ADDRESS _____

_____ Check if new member.
Enclosed is my check for \$15.00

AUCTION CALENDAR OF EVENTS

November 16, 2002
CARNIVAL GLASS COLLECTION
at Boonville, Mo. Auction Gallery

January 4, 2003
12TH NEW YEARS
CARNIVAL GLASS EXTRAVAGANZA
at Boonville, Mo. Auction Gallery

Carnival Glass
FEBRUARY, 2003 - BOONVILLE, MO
MARCH, 2003 - BOONVILLE, MO

April 12, 2003
WORLD WIDE WEB
CARNIVAL GLASS CONVENTION
St. Louis, Missouri

SPECIAL NOTE:

NO SUNDAY CALLS, PLEASE!

Winning Absentee Bidders will be contacted Monday through Wednesday of the week following the Auction!

Thank You!

NEED QUALITY CARNIVAL GLASS

*"We don't want all the Business,
Just Yours."*

WE DO AUCTIONS RIGHT!!

MICKEY REICHEL
ANTIQUE & AUCTION, L.C.
516 THIRD STREET
BOONVILLE, MO 65233-1536

PRESORTED
FIRST CLASS MAIL
US POSTAGE PAID
SEDALIA, MO
PERMIT 217

RETURN SERVICE REQUESTED

FIRST CLASS MAIL
SPECIAL INVITATION TO:



8*15*****MIXED AADC 650

LEE MARKLEY

PO BOX 306

MENTONE, IN 46539-0306

