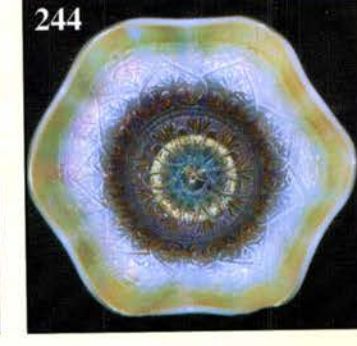
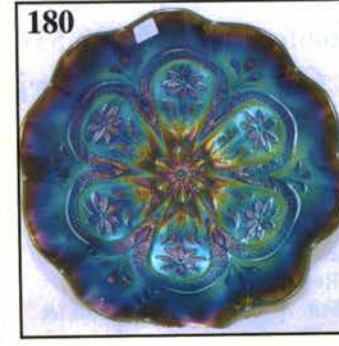
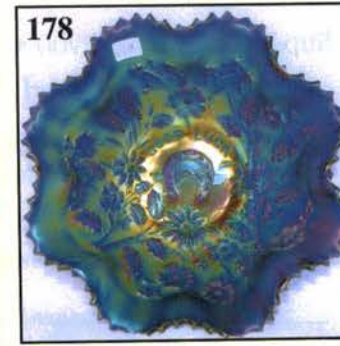
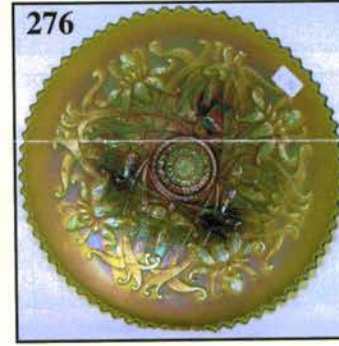
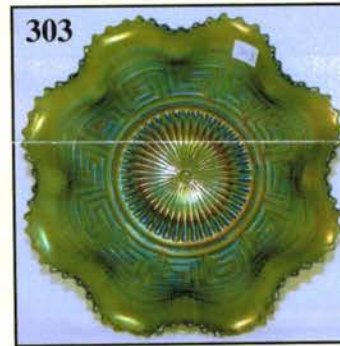
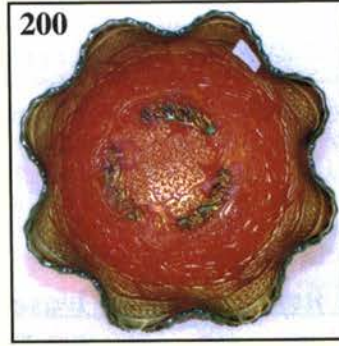
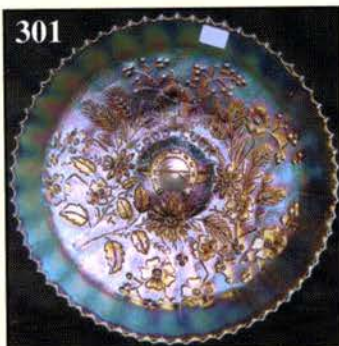


CARNIVAL GLASS AUCTION

Saturday, September 14, 2002 9:00 a.m., C.D.T.

★ Collection of Rarity and Color ★



Held By the Mickey Reichel Antique & Auction L.C.

Office: 660-882-5292 • Home: 660-882-5283

Direct e-mail: mreichel@undata.com

WEB SITE: <http://www.yourauctionpage.com/reichel>



Held Inside the Mickey Reichel Auction Center

1 Mile North of I-70 on Hwy. 5, Exit 101, Boonville, Missouri • 20 Miles West of Columbia, MO on I-70
Preview Friday 12 p.m. - 5 p.m. and 7:30 a.m. - 9:00 a.m. Day of Auction



TERMS: Cash or Good Check, VISA and MasterCard accepted.



3% Clerking Fee on all purchases except for payment of cash or check. Proper I.D. required.

WEB SITE: www.yourauctionpage.com/reichel

ABSENTEE BID POLICY:

WRITE IN BIDS: If you are unable to attend the auction, we will be happy to accept absentee bids which must be received by THURSDAY, SEPTEMBER 12, 2002. Don't Delay. E-Mail: mreichel@undata.com

FOR AUCTION PRICE RESULTS: Send \$3.00 and Large S.A.S.E. to 516 Third Street, Boonville, MO 65233-1536

PLEASE NOTE: There is a **\$5 handling charge for each successful bid which will be added to the selling price** for all write-in bids. This is in addition to the cost of postage, insurance and packing. Your write-in bid will be entered just as if you are present and bidding. **Successful bidders will be notified in 1 to 3 days by the auctioneer (so be sure to include your phone number).** Direct mail bids to Auctioneer Mickey Reichel, 516 Third Street, Boonville, MO 65233-1536. Terms: Cash or Check accepted with proper I.D. and Social Security Number and References. Announcements made day of the auction supercede all printed material. Not Responsible for Accidents or Sold Items.

No return on any items once they leave the Auction Center (No Exceptions).****

Call for additional information: 660-882-5292 days or 660-882-5283 evenings before 9:00 p.m.

FAX: 660-882-5292 (evening hours start FAX transmission after beep)

MAIL BIDS: Items are bid on in perfect condition with average or above iridescence OR as listed in the brochures. Bids will not be carried out when damage on an item has been found during the auction.

PEOPLE PRESENT AT AUCTION ARE RESPONSIBLE FOR FINDING ANY PINHEADS, WEAR, SPOTTINESS, MANUFACTURER'S DEFECTS OR ANY OTHER MINOR FLAWS, ETC. *****

NOTE: Read each line, as we have accentuated the type of no particular piece, all are special.

Make Reservations EARLY at one of these local motels:

Days Inn: 660-882-8624 • Comfort Inn: 660-882-5317 • Super 8: 660-882-2900 • Holiday Inn: 660-882-6882

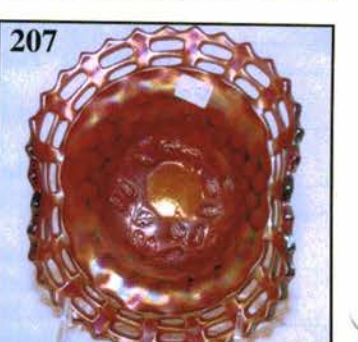
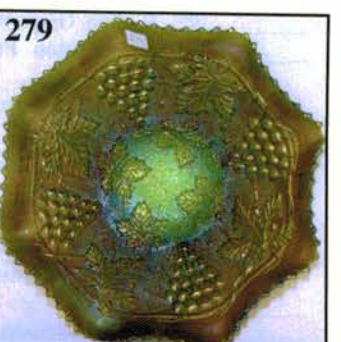
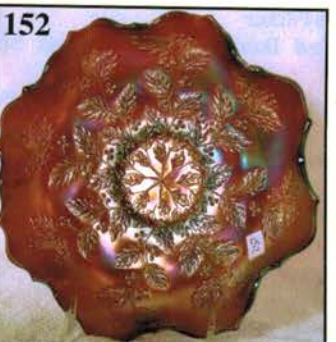
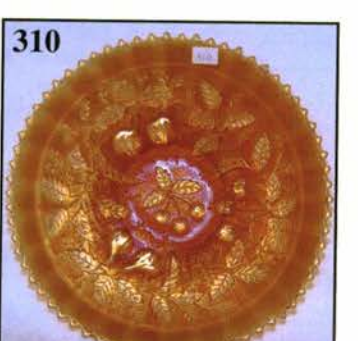
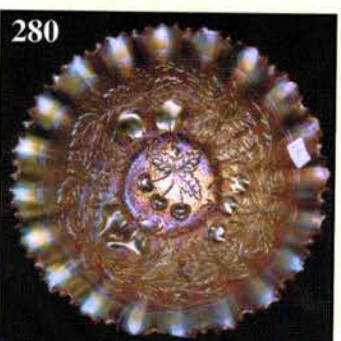
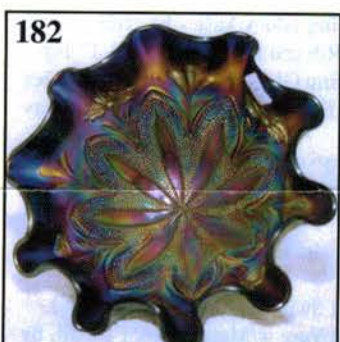
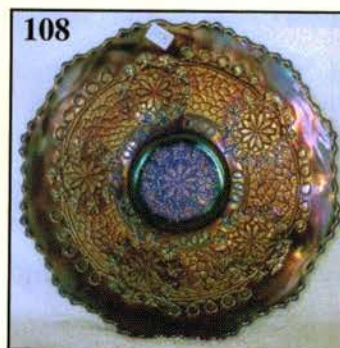
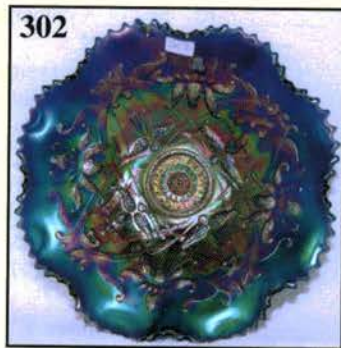
Auction Consists of Rarity, Great Irid. and Variety

THANK YOU FOR ATTENDING TODAY

1. M - Fenton Orange Tree Mug - 2-1/2" Base
2. M - Fenton Orange Tree Mug - 3" Base - Choice A or B
3. M - Fenton 7" Stippled Rays/Scale Band Plate
4. M - Fenton 9" ICS, Ftd. Water Lily (or Lotus & Poinsettia) Bowl - Great Example
5. Rich M - Fenton 8-1/2" ICS Holly Bowl - Near Pumpkin
6. W - Fenton 9-1/2" Holly Plate
7. PO - Dugan 6-1/2" Four Flowers Plate - BW Ext. - Nice One
8. B - Fenton 7-3/4" Leaf Chain Plate - Outstanding
9. M - Fenton 7-3/4" Leaf Chain Plate - Pumpkin
10. Smoke - Imp. 7-1/2" Three Row Vase - Ultra Rare Beauty
11. M - Imp. 8" Ripple Swung Vase - Base Crack
12. B - Fenton 16-1/2" Fine Rib Vase - Top Notch
13. A - Fenton 9-3/4" Long Thumbprint Vase

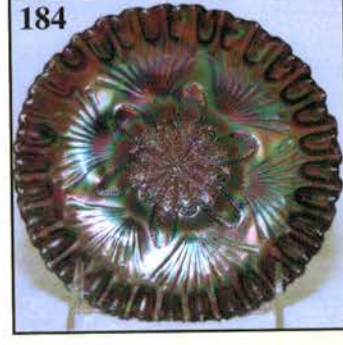
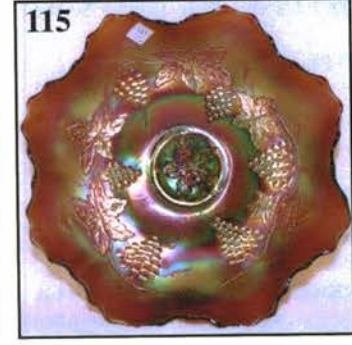
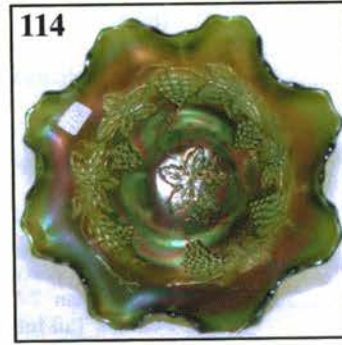
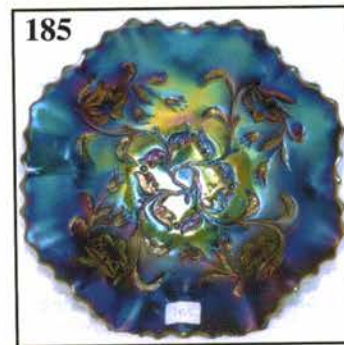
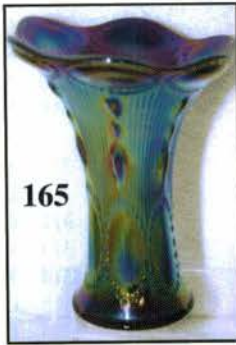
14. B - N 8 Sided Bushel Basket - Electric Interior
15. A - Mlbg. 10", 6 Ruffle Whirling Leaves Bowl - Light Center
16. M - Split Diamond Butter Dish with Lid - Very Scarce and Nice
17. A - Fenton Coin Dot Rosebowl - Slightly Worn
18. W - Fenton 9" Peacock and Urn Plate - Frosty Silver Irid.
19. B - Fenton 5-1/2" 2 Row, O.E. Basket - Four Sides Up
20. M - Mlbg. 9-1/2" Grape Leaves Ruffled Bowl - Radium w/Pink Highlights - Quite Scarce
21. G - Fenton 9" Deep, Rd., Flared Little Flowers Bowl - Above Average
22. P - N Spat. Ftd. Three Fruits Medallion Bowl - Multi Elec.
23. M - N Spat. Ftd. Sunflower Bowl - Sm. Chip on Foot - Nice Color

24. **A - Dugan 10-1/2", 6 Ruffle Cosmos Vt. Bowl - Scarce Color, Super Irid.**
25. M - **N 9" Peacocks Plate - Rib Ext. - Silver Off One Tip**
26. **W - N 9" Peacocks Plate - Blue and Green Highlights**
27. Ice B - **N Poppy Show Ruffled Bowl**
28. **AO - N 9" Rose Show Bowl - Lots of Opal w/Pastel Highlights**
29. M - Dugan Stork in Rushes Punch Bowl Top - Good Color & Detail
30. **G - Imp. 11-1/4" Heavy Grape Chop Plate - Beautiful Pinks**
31. M - Imp. Fashion Punch Bowl Base Only
32. **Blue Opal - Westmoreland 9", 6 Ruffle Daisy Wreath Bowl - Very Undervalued**
33. M - Peacock Lamp Base - Enameled Interior Peeling - Loads of Blue & Purple Irid.
34. **G - Cambridge Buzz Saw Cruet With Stopper**
35. M - Imp. Herringbone and Beaded Ovals Six Ruffle Compote - Worn Irid.
36. **Smoke - Imp. 5" Mini Morning Glory Vase - Beautiful Little Rarity**
37. M - Imp. 8-1/2" Swung Morning Glory Stick Vase - Very Pretty
38. **Smoke - Imp. 6-1/2" Morning Glory Vase - 3-3/4" Top**
39. M - Imp. 5-1/2" Morning Glory Vase - Lots of Pinks and Blues
40. **P - Imp. 6-1/2" Morning Glory Vase - Electric**
41. M - Imp. 4-3/4" Thin Rib and Drape Vase - 3-3/4" Top
42. **G - Imp. 5-3/4" Morning Glory Vase - Scarce and Nice**
43. M - Imp. 5-5/8" Thin Rib and Drape Vase - Very Pretty and Detailed
44. **Sapphire - Imp. 11-1/2" Swung Ripple Vase**
45. Dark M - Imp 4-1/2" Thin Rib and Drape Vase - 4-1/4" Flat Top - Colorful!
46. **M - Mlbg. Hobnail Swirl Rosebowl - Dark and Extra Nice**
47. G - Mlbg. 10" Hobnail Swirl Vase - Lots of Blue Irid.
48. **Smoky Blue - 3" Roll Vase w/Metal Holder - Mfd. by Dunbar Flint Glass Co.**
49. M - 9" Top Hat Vase - Also Made by Dunbar
50. **PO - Dugan 6" Squatty Target Vase - 3-3/4" Base, WOW! 7" Top**
51. PO - Dugan 7" Thin Panel Vase - Loaded with Opal
52. **Aqua - Dugan 6" Estate Vase**
53. M - Imp. 5-1/4" Morning Glory Vase - 4" Top
54. **Clam - Imp. Premium Candlesticks - 8-1/4" Tall - Pair**
55. W - Mini Stippled Estate Vase - 3" Tall - Not Iridized
56. **A. Flashed - Gold Trim, 3-1/2" Tall Mini Trophy Toothpick**
- 56A. A - Imp. Broken Arches Punch Cup
- 56B. **Celeste B - Gold Trim, Shovel Handled Server - Stretchy**
57. Clam - Imp. 10-3/4" Floral Optic Ftd. Cake Plate
58. **W - Imp. 11" Floral Optic Stretch Ftd. Cake Plate - A Beauty**
59. M - Fenton 6-3/4" Stippled Rays/Scale Band Plate - Super Color
60. **M - Dugan 7" Grapevine Lattice Plate**
61. Persian Blue - Fenton 6-1/4" Pond Lily Plate - Not Iridized
62. **Amber - Imp. Ruffled Pansy Pickle Dish**
63. Amber - Imp. Ruffled 9" Grape Bowl - Splendid Color
64. **M - Jeanette Studs Juice Pitcher, 5 Glasses and Handled Undertray**
65. Red - Contemporary -Hansen Daisy and Button Toothpick
66. **M - Honeycomb Kerosene Lamp w/Matching Chimney - Neat Item**
67. Celeste B - **N Concave Diamonds Tumbler**
68. **P - Imp. Tiger Lily Tumbler - Radium Electric**
69. P - Imp. Grape Tumbler - Electric Highlights
70. **PO - Dugan Tri-Corner Spittoon Whimsey From Interior Rib Vase - It's Different!**
71. Red Amberina - Fenton 9" Ruffled, Ftd. 3 Row OE Bowl - Non-Irid.
72. **PO - Dugan 9" 3 in 1 Crimp Apple Blossom Twigs Bowl - Pretty Piece!**
73. Red - Fenton Orange Tree Shaving Mug - Not Iridized - 3" Base
74. **Red Amberina - Fenton Orange Tree Mug - 2-1/2" Base - A Real Beauty**
75. Red - Fenton 6" JIP Lg. 2-Row O.E. Basket
76. **Red Stretch - Imp. Double Scroll Console Bowl - Yellow Amber Base - Splendid**
77. W - Frosty 8" High Lamp Shade with 4" Opening - Pretty Design
78. **Moonstone - Fenton 6-1/4", CRE Flowering Dill Hat - 4 Sides Up**
79. P - Dugan Dogwood Sprays 7-1/2", 10 Ruffle Deep Compote - Stunning Electric
80. **B - Fenton 11-1/4" Flared Top Orange Tree Punch Bowl and Base - Radium Beauty**
81. M - Fenton 11-1/2" Flared Top Orange Tree Punch Bowl and Base - Also Lovely
82. **M - Orange Tree Punch Cup**
83. B - Fenton 10-1/2" Ruffled Orange Tree Punch Bowl and Base - Multi Electric
84. **G - Fenton 12", Flared Vintage (Grape) Punch Bowl and Base (Wreath of Roses Ext.)**
85. G - Fenton Vintage (Grape) Punch Cups - Choice A, B, C
86. **P - N Memphis Fruit Bowl and Base - 11-1/2" Ruffled Top**
87. P - **N Memphis Punch Cup**
88. **M - Dugan 8 Ruffle Many Fruits Punch Bowl - Ruffled Base and Six Cups**
89. M - Imp. Twins Fruit Bowl and Base
- 90A. **P - N Grape and Cable Sm. Punch Bowl and Base - Great Multi Irid.**
90. **Teal - Imp. Tiger Lily Water Pitcher - Ground Base**
91. M - Imp. Tiger Lily Water Pitcher - Very Pretty Example
92. **B - Dugan Peacock at Fountain Water Pitcher**
93. M - Fenton Leaf Tiers Water Pitcher - Chips on Two Feet
94. **G - N Raspberry Water Pitcher - Beautiful Example**
95. M - **N Grape and Cable Water Pitcher - Colorful**
96. **M - Dugan Beaded Shell Water Pitcher - Seldom Offered**
97. P - Imp. Grape Water Pitcher
98. **B - Fenton Paneled Dandelion Pitcher and Six Tumblers**
99. M - Dugan Vineyard Water Pitcher - Color Top To Bottom
100. **M - Fenton Enameled Magnolia and Interior Drape Water Pitcher w/5 Tumblers**
101. M - Dugan Heavy Iris Tankard Water Pitcher
102. **Gorgeous W - U.S. Glass Palm Beach Water Pitcher - Loaded w/Pastel Colors**
103. M - Imp. Grape Wine Decanter with Five Wines
104. **M - N Wishbone Single Lily Epergne - Scarce & Nice**



105. B - N 9" Stippled Peacocks Plate
106. **Ice B - N 9" Hearts and Flowers Plate - Very Desirable**
107. M - Dugan 6-1/2" Persian Garden Plate - BW Ext.
108. **B - Fenton 9-1/4" Leaf Chain Plate - Stretchy, Multi-Color Irid. - Scarce Color**
109. Russet - N 9-1/2" Four Pillars Vase - Better Example
110. **M - Australian 10" Gum Tips Vase - Not Often Seen**
111. P - Westmoreland 9" Concave Flute Vase
112. **P - Westmoreland 7-3/4" Concave Flute Vase**
113. P - N Tornado Vase - Popular Item
114. **RARE G - Dugan 7-3/4", 8 Ruffle Vintage (Grape) Nut Bowl - A Dandy**
115. A - Dugan 9", 8 Ruffle Vintage (Grape) Bowl - A Scarce Beauty
116. **PO- Dugan Enameled 8-1/4" Dome Base Stippled Petals Bowl - Forget Me Not Dec.**
117. PO - Dugan 9" CRE, Tri-Corner Smooth Rays/Caroline Bowl
118. **PO - Dugan 9" Stippled Petals Banana Shape Bowl**
119. M - Dugan Vintage Banded Mug - Dark, Rich Example
120. **M - Australian 6-1/2", 12 Ruffle Broken Chain Bowl**
121. G - Fenton Wreath of Roses Stemmed Bonbon
122. **Pastel M - N Poppy Pickle Dish - Lots of Pinks**
123. Amber and Pearl 14" Glass Beaded Necklace
124. **W - Dugan Wreathed Cherry Large Berry Bowl - Gold Trim, Lovely**
125. P - Dugan 9", 10 Ruffle Dogwood Sprays Dome Base Bowl - Satin Silver
126. **A - Dugan 8-1/2", 6 Ruffle Pony Bowl - Loaded with Color**
127. Pearlized - Grape and Gothic Arches Bolo (Necktie) - Handmade
128. **Fantastic B - Fenton 9-1/2" Holly Plate - Multi Electric**
129. G - Fenton Spat. Ftd., 8", Ruffled Dragon and Lotus Bowl
130. **Deep P - Fenton Collar Base, 9", 8 Ruffle Peacock and Grape Bowl - Rare Base Color**
131. G - Fenton 8" CRE Heart and Vine Bowl - Scarce Shape
132. **Rich M - Fenton 11" Ball Ftd. Two Flowers Sq. 8 Ruffle Bowl - Great One!**
133. M - Imp. Fine Cut Flower Ruffled Compote
134. **M - U.S. Glass Diamond and Daisy Cut Pitcher - Base Chip**
135. PO - Dugan 8" CRE Single Flower Framed Bowl/Plate? - Smooth Ray Int.
136. **P - Dugan 6-1/2" CRE Smooth Rays Plate - Jeweled Heart Ext.**
137. PO - Dugan 6-1/4" Lined Lattice Vase - 90% Opal
138. **PO - Northwood/Dugan Nautilus Creamer**
139. M - Dugan Beaded Shell Mug - Seldom Offered
140. **M - Fenton Enamel-Decorated Silver Queen Tumbler - Ground Base - Good Color**
141. Olive - Imp. Field Flower Tumbler - Radium Silver
142. **Lav. Smoke - Imp. Grape Tumbler - Electric Highlights**
143. M - Fenton Holly CRE Ruffled Compote - Clear Base
144. **Powder Blue - Fenton 6 Ruffle Holly Compote - M. Top**
145. Lav. Base - Fenton 8-3/4", 3 in 1 Holly Bowl - Amethyst Overlay - Neat Look
146. **M - Imp. Tulip and Cane Compote - 6 Ruffle, Flared Top - Nice Item**
147. Amber - Fenton Peacock at Urn Six Ruffle Compote - Reddish Irid.
148. **P - Imp. Hobstar Flower 6 Ruffle Compote - Multi Electric**
149. Lime Vas. - Fenton 6", Ftd., 6 Ruffle Two Flowers Bowl - A Little Gem
150. **Scarce A - Fenton 7" Rd. Cherry Circles Deep Bonbon - Super Irid.**
151. B - St. Clair Panel Grape Wine - A Great Little Piece
152. **Brick Red - Fenton 9", 8 Ruffle Holly Bowl - Reddish Highlights - Scarce**
153. Elec. B - HOACGA 2000 Room Display Hobnail Spittoon
154. **Red - Hansen 3-1/2" Tall Honeycomb Juice Glass**
155. Elec. B - HOACGA 2000 8-3/4" Pansy Souvenir Plate
156. **RARE Lav. Tint - Fenton Kittens 6 Ruffle Bowl - Heavily Iridized - Super**
157. Pastel Lav. Tint - Fenton Kittens 3-1/2" Cereal Bowl - RARE
158. **W - Dugan Heavy Iris Tumbler - Outstanding Detail and Color**
159. P - N Oriental Poppy Tumbler - Radium Electric
160. **Super M - N Grape and Cable 4-1/4" Tumbler**
161. M - Fenton 7-3/4" Vintage Grape Plate - Scarce Size and Colorful
162. **A - Fenton 6-1/4", 12 Sided Pine Cone Plate - A Real Beauty**
163. Purple Slag - Fenton Horse Medallion Ftd. Nut Bowl - Few Known
164. **M - Dugan Formal JIP Vase - Very Desirable**
165. Radium Elec. P - Imp. 7-3/4 Squatty Beaded Bullseye Vase - 6-3/4" Flared Opening
166. **P - Dugan Spiralex 13-1/4" Tall Vase - Radium Electric Highlights**
167. Russet - N 10-3/4" Four Pillars Vase - Beautiful Pastel Irid.
168. **Ice Green Vas. - Fenton Stretch Melon Rib Fan Vase (Plate 356)**
169. Radium Crystal - Fenton 5-1/2", 6 Ruffle Small Rib Compote - Loads of Color
170. **P - Imp. Flute Breakfast Creamer - Super Electric**
171. P - Imp. Heavy Grape 7", 8 Ruffle Bowl - Scrumptious!!
172. **PO - Dugan 7-1/4" Honeycomb Ruffled Banana Shape Bowl**
173. G - N Memphis Punch Cups - 6 x \$
174. **Electric B - N Fruits and Flowers Stemmed Bonbon**
175. P - N Grape and Cable Sweetmeat with Lid - Sm. Inside Lip Chip
176. **P - N PCE Strawberry Bowl - Smooth Ext. - Multi Electric Beauty**
177. Blue - N Ruffled Poppy Pickle Dish - Electric Highlights
178. **Blue - N Ruffled Good Luck Bowl - Rib Ext. - Radium Multi Electric**
179. Custard - N PCE 8-3/4" Hearts and Flowers Bowl - Not Iridized
180. **P - Dugan Dome Base - 9-1/4", Low 10 Ruffle Flowers and Frames Bowl - Awesome Electric**
181. P - Dugan 8-1/2", Ball Ftd., 10 Ruffle Cherries Inside/Out Bowl - Multi-Electric
182. **Spectacular BA - Dugan 7-3/4", 10 Ruffle Border Plants Deep Compote - WOW!**
183. PO - Dugan Question Marks 6-1/4", CRE Stemmed Plate - Plain Ext.
184. **P - Dugan 6-1/4", CRE Petal and Fan Plate - Jeweled Heart Ext. - Tough Find, Great Example**

185. Deep P - Dugan 7", Low 8 Ruffle Bells and Beads Bowl - Superb Multi Electric
186. **A - Dugan Butterfly and Tulip 9-1/2" Deep 8 Scallop Ftd. Bowl - An Exceptional Find**
187. B - Fenton 8-1/4" Tight CRE Ten Mums Bowl - Beautiful Elec. Highlights
188. **Pastel M - Imp. 10-1/2" Acanthus Chop Plate - Yellows, Blues, Pinks**
189. G - Mlbg. 7-1/4", 6 Ruffle Grape Wreath Bowl - Feathered Leaf Center - Radium
190. **Pumpkin M - Fenton 10" Ftd., Sq. 8 Ruffle Two Flowers Master Bowl**
191. Rich M - Fenton 5-3/4", Ftd., 6 Ruffle Butterfly and Berry Bowl
192. **Rich M - Fenton 9-1/2", 12 Sided Three Fruits Plate - Super Example**
193. M - Fenton 8-3/4", Sq. 8 Ruffle Peacock at Urn Bowl - Full Color Bird
194. **B - Fenton 9-1/2" Peacock At Urn Plate - Multi Irid.**
195. Smoky Blue - Fenton Orange Tree 5-1/4" Tall Wine
196. **G - Fenton 8" Low ICS, Spat. Ftd. Stag and Holly Bowl - Very Scarce Item**
197. W - Dugan 9-3/4" Dome Base Double Stem Rose Plate - Stretchy, Colorful Irid.
198. **P - N Grape and Cable Cologne Bottle with Stopper - Way Above Average**
199. Helios G - Imp. 9-1/4" Scroll Embossed Plate
200. **RARE RED - Fenton Spat. Ftd., 8", 8 Ruffle Two Flowers Bowl**
201. Red - Fenton Persian Medallion Bonbon - Above Average
202. **Red Slag - Fenton Lotus and Grape Vt. Card Tray Shape Bonbon**
203. Red - Fenton 5-1/2" Rd. Stippled Rays Bowl - Scale Band Ext. - Wonderful Example
204. **Red Amberina - Fenton 6", 6 Ruffle Sailboats Bowl**
205. Red - Fenton 5-3/4", 6 Ruffle, 2 Row, O.E. Basket - Extra Nice
206. **Awesome Red - Fenton 6", 6 Ruffle Holly Hat - Find One Better!**
207. Exceptional Red - Fenton 7-1/4", 2 Row Blackberry O.E. Basket - 2 Sides Up
208. **Red - Fenton 6-1/2", 6 Ruffle Blackberry Spray Hat - Loaded with Red Irid.**
209. Red - Fenton 5-3/4", 2 Row O.E. Basket - 2 Sides Up
210. **Red Amberina - Fenton 6", 4 Sides Up Holly Hat - Red and Blue Irid.**
211. B - Fenton Spearhead and Rib 15-1/4" Vase - 3-3/4" Base - Swung Beauty
212. **P - N 12-3/4" Mid-Size Tree Trunk Funeral Vase - 4-3/4" Base**
213. M - Imp. Ripple 13" Funeral Vase - 4-3/4" Base - 7-3/4" Opening
214. **M - Fenton Waterlily and Cattails Butter Dish with Lid - Radium**
215. M - Fenton Waterlily and Cattails Sugar Bowl with Lid - Also Radium
216. **P - N 9-1/4" Peacocks Plate - Rib Ext. - Great Purples and Golds**
217. G - Imp. 9" Open Rose Plate - Extra Nice Example
218. **M - Fenton 7-3/4" Horse Medallion Plate - Detailed Strike**
219. P - N 9" Grape and Cable Plate - BW Ext. - Multi Electric Dandy
220. **M - N 9" Hearts and Flowers Plate - Rich Color, Blue and Pink Center**
221. W - N PCE Hearts and Flowers Bowl - Frosty, Pastel Winner!
222. **P - N 10-1/4" Low ICS Peacock At Urn Bowl - Fine Example**
223. P - N 5-3/4" ICS Peacock At Urn Bowls - Choice A, B, C, D, E
224. **Dark M - Fenton Ball Ftd., 9", Sq. 8 Ruffle, Deep Stag and Holly Fruit Bowl**
225. Clam - Fenton 8-1/4" ICS Leaf Chain Bowl
226. **Rich M - Fenton Ball Ftd., 9-1/4", Sq. 8 Ruffle Deep Chrysanthemum/Windmill Fruit Bowl**
227. M - Fenton 9" Sq. 8 Ruffle Holly Bowl
228. **G - N Grape and Cable Butter Dish with Lid - Radium Blues and Pinks**
229. Electric Clambroth - Imp. 8-3/4", 8 Ruffle Grape Bowl
230. **Radium M - Imp. Grape 8 Ruffle, 9" Bowl**
231. Pumpkin M - Imp. Open Rose 8", 8 Ruffle Bowl - Real Beauty
232. **G - Imp. Grape 6-1/2" Plate - A Little Cutie**
233. M - Fenton Birds and Cherries Ruffled Compote
234. **Scarce M - N Lightning Flower Nappy**
235. Lime G - Smooth Rays 6" Ruffled Compote - M. Overlay
236. **B - Fenton Floral and Grape Vt. Tumblers - Choice A or B**
237. B - Orange Tree Shaving Mug - 3" Base
238. **P - Dugan Peacock At Fountain Tumbler - Scarce Color**
239. B - Fenton 8-3/4" Butterfly and Berry Vase
240. **M - Fenton 9" Spat. Ftd. Peacock and Grape Plate - Flat and Colorful**
241. G - Mlbg. 7-3/4", 6 Ruffle Blackberry Wreath Bowl - Satin Finish
242. **M - N Lustre Flute Low, Rd. Bonbon - Fantastic Radium Finish**
243. P - N Grape and Cable Vt. 8", 8 Ruffle Bowl - Smooth Ext.
244. **Super Pastel AO - N Hearts and Flowers Compote - About As Good As They Get!**
245. Elec. P - Imp. Grape Decanter - No Stopper
246. **AO - N Rd. Bushel Basket - Full Opal Handles and Rim**
247. Radium M - Fenton 10" Flat Holly Plate - Clear Center
248. **B - Fenton Holly 9-3/4" Plate - Electric Blues, Yellows, Greens & Pinks**
249. Frosty W - Fenton 9-3/4" Holly Plate - Stretchy and Lush Pastel Iridescence
250. **Scarce G - Fenton Holly 9-3/4" Plate - Minor Pin Scratch on Front - So?**
251. M - Fenton 6-1/4" Pine Cone 12-Sided Plate
252. **G - Fenton 6-3/8" Rd. Pine Cone Plate - Splendid Example**
253. A - Fenton 7-1/2" Vintage Grape Plate - Color Galore and Flat!
254. **B - Fenton 7-1/2" Vintage Grape Plate - Clean and Nice**
255. G - Fenton 7-1/2" Vintage Grape Plate - Flat Beauty
256. **Rich M - Fenton 7-1/2" Peacock and Dahlia Plate - Fantastic Detail and Rare**
257. M - Fenton 6-1/2" Little Flowers Plate - Super Stretch Irid.
258. **Rare W - N Singing Birds Mug - Blues and Fuschias**



259. P - N Blackberry and Rays Ruffled Compote - Very Detailed and Scarce
260. **Electric Clambroth - Imp. Fashion 9-1/4" ICS Bowl**
261. P - N Grape and Cable Punch Cups - 3 x \$
262. **Radium Pastel M - Imp 10-3/4" Ftd. Floral Optic Cake Plate**
263. M - Fenton Spat Ftd., 7-3/4", 8 Ruffle Peacock and Grape Bowl
264. **M - Fenton 7-1/4" Rd. Cherry Circles Bonbon - Nice Irid.**
265. M - Imp. 6-1/2" Grape Plate - Radium Pinks and Blues
266. **PO - Dugan 6-1/2" Four Flowers Plate - BW Ext. - 1" of Opal**
267. P - Westmoreland Lg., Ftd. Shells Dish
268. **Teal - Westmoreland Lg., Ftd. Shells Dish**
269. P - Westmoreland Sm., Ftd. Shells Dish
270. **P - Westmoreland 9" Ftd., Flared Louisa Plate - Scarce Color!!**
271. Rich M - Fenton 9-1/4", 6 Ruffle Ribbon Tie Bowl - Outstanding Irid. Front and Back
272. **M - Fenton Lotus and Grape Vt. Card Tray Bonbon - Dark and Rich**
273. P - Mlbg. 10", 6 Ruffle Nesting Swan Bowl - Loaded with Satin Blues and Purples
274. **G - Fenton 9" Sq. 8 Ruffle Lotus and Grape Bowl - Tremendous Eye Appeal**
275. Awesome G - Fenton 9-1/4", 6 Ruffle Captive Rose Bowl
276. **Rare G - N 8-1/2" Ftd. Wishbone Plate**
277. Lav. - N Good Luck Ruffled Bowl - Rib Ext. - Multi Electric & Stretchy
278. **Pastel M - N Good Luck Ruffled, Stippled Bowl - Rib Ext. - Covered In Yellows, Blues, Pinks & Greens**
279. G - N 10", 8 Ruffle Stippled Grape and Cable Bowl - BW Ext. - Beautiful!
280. **Pastel M - N PCE Stippled Three Fruits Bowl - Rib Back - Soft Blues and Pinks**
281. Deep P - N Singing Birds Mug
282. **P - Dugan Fisherman's Mug with "Estate" Handle - Well Detailed**
283. B - Fenton 8-1/2", 3 in 1 Captive Rose Bowl - Scarce Shape
284. **M - Stork ABC 7-1/2" Plate - Top Notch Piece**
285. Cobalt Blue - N 5-3/8" ICS Peacock At Urn Berry Bowl - Sweet
286. **B - Fenton Miniature Blackberry Compote - Superb Detailing**
287. M - Fenton 6", 6 Ruffle Sailboats Bowl
288. **A - N 6", 6 Ruffle Wild Strawberry Bowl - Really Nice**
289. M - Fenton Orange Tree Shaving Mug - 3" Base
290. **M - Dugan Stork in Rushes Cream Pitcher - Great Find**
291. M - Fenton 8" Spat. Ftd. Ruffled Grape and Cable Bowl
292. **M - Fenton 9-1/4" ICS Ball Ftd. Water Lily Bowl**
293. M - Imp. Windmill Water Pitcher
294. **Clam - Imp. 9-3/4" Star Medallion Plate - Covered with Great Irid.**
295. Rich A - N 6", 6 Ruffle Fruits and Flowers Bowl
296. **M - N Stippled Grape and Cable Bonbon - Seldom Offered**
297. Dark M - Fenton Illusion Bonbon - Undervalued Beauty
298. **Lav. Tint Base - Fenton 9" ICS Holly Bowl**
299. M - Pineapple Crown 7-3/4" Oval Bowl
300. **Beautiful A - Fenton 9-1/4" Concord Plate - A Must for the Plate Collector**
301. Pastel M - N Flat 9-1/4" Stippled Good Luck Plate - Rib Ext. - Blues and Pinks
302. **B - N Wishbone 8-1/2" Ftd., Ruffled Bowl - Tough Color To Find**
303. Emerald Green - N 8-1/2", 8 Ruffle Greek Key Bowl - BW Ext. - Fantastic
304. **Rare M - Fenton Butterfly and Berry Hatpin Holder - Harder to Find Every Year**
305. M - Dugan Circle Scroll 7-3/4" Vase - Lots of Blues and Pinks
306. **Rare M - Diamond Heart 5-1/2" Vase - Geometrical Design - Jain?**
307. A - N Greek Key 8-1/2" Deep Plate or Flared Bowl - 2-1/8" Tall - BW Ext.
308. **B - N Greek Key 9" Ruffled Bowl - Rib Ext. - Very Scarce Color**
309. Amber - Imp. 9" Open Rose Plate - Real Beauty
310. **M - N 9-1/4" Stippled Three Fruits Plate - Rib Ext. - Always In Demand**
311. M - Fenton 9-1/4" Flat, Spat. Ftd. Stag and Holly Plate - Lots of Irid.
312. **Light M - N 9-1/4" Nippon Plate - Scarce BW Ext.**
313. W - N Ruffled Rose Show Bowl - Well Above Average
314. **W - N Poppy Show 9" Plate - Flat - Lots of Pastel Irid.**
315. G - Imp. 8-3/4" Ripple Vase
316. **G - Imp. 8" Ripple Vase - 3-1/4" Base, 5" Top**
317. M - Imp. 12" Swung Ripple Vase - Rich In Color
318. **Deep B - Fenton 7-1/2" Paneled Diamond and Bows Vase - Sharp Strike, Nice Color**
319. M - Imp. 11" Freefold Vase
320. **M - Imp. 9-1/4" Swung Ripple Vase**
321. M - Fenton JIP 6" 2 Row O.E. Hat
322. **M - Fenton 2 Row, O.E. John H Brand Adv. Hat - 2 Sides Up**
323. M - Imp. 4-3/4" Rd. Lustre Rose Berry Bowls - 4 x \$
324. **M - Dugan 7" Ruffled Daisy Dear Bowl**
325. M - Imp. Lustre Rose Tumbler - Base Chip
326. **M - Imp. Grape Tumbler**
327. Helios G - Imp. 8", 8 Ruffle Lustre Rose Bowl
328. **W - Contemporary - Stork In Rushes Toothpick Holder**
329. Smoke - Signed IG Scroll and Flower Panel Vase
330. **Lime - Indiana Glass 12 Punch Cups - Original Box - 12 x \$**
331. Olive - Fenton Coin Dot 6" Rosebowl - Scarce Color
332. **Yellow Vas. - Fenton Goblet Shape Compotes - Choice A or B**
333. M - Imp. 8-1/2" Deep Heavy Grape Bowl
334. **B - Fenton 9", 3 in 1 Ribbon Tie Plate**
335. M - Fenton Peacock At Urn Ruffled Compote
336. **G - Fenton 7-1/2" Squatty April Showers Vase - Peacock Tail Int.**
337. BA - Dugan 9" Lined Lattice Vase
338. **M - N Peacock At Fountain Punch Bowl Base - Lots Of Hot Pinks**
339. M - Fenton 10", Ball Ftd., Sq. 8 Ruffle Water Lily Bowl
340. **M - Duck Covered Powder Dish - 5-1/2" Long - Original Cold Paint**
341. M - Imp. Soda Gold Spittoons - Choice A or B
342. **Clam - Imp. Floral Optic Ftd. Rosebowl w/6" Ruffled Opening**
343. A - Fenton Wreath of Roses Punch Cup - Grape Int.
344. **M - N Acorn Burrs 4-1/2" Berry Bowl - 5 x \$**
345. Rich Smoke - Imp. 5", 6 Ruffle Tulip and Cane Berry Dish

- _____ 346. Dark M - 7-1/4" Stork In Rushes Vase - Great Color and Detail
- _____ 347. G - N Paneled Holly Bonbon
- _____ 348. M - Imp. Star and File Nut Bowl - 5-1/2" Across, 3-1/2" Deep - Most Unusual
- _____ 349. M - Hen and Chicks Covered Dish
- _____ 350. Radium Smoke - Imp. Star Medallion Milk Pitcher
- _____ 351. M - Fenton 7-1/4" Rd. Cherry Circles Bonbon
- _____ 352. Pink - Fostoria 6-3/8" Brocaded Daffodils 6-Sided Compote
- _____ 353. M - Imp. Star and File Wine Glass
- _____ 354. Red - Fenton JIP, 2 Row, O.E. Basket
- _____ 355. Lime G - N Memphis Punch Cup - Tiny Rim Bruise

Remaining items listed sold as is with minor flaws and imperfections. Some great color and scarce items - All with some damage.

- _____ 356. Cherry Red - Fenton 7" Rd. Acorn Bowl - Rim Chip
- _____ 357. Red Amberina - Fenton 9", 8 Ruffle Dragon and Lotus Bowl - Tip Chipped
- _____ 358. M - N 10-1/4" ICS Peacock At Urn Bowl - Fully Stippled - Very Rough Marie
- _____ 359. Pastel AO - N Ruffled Peacocks Bowl - Chip Between Points
- _____ 360. Rare Aqua - N Ruffled Peacocks Bowl - Tip Chipped Off
- _____ 361. Near Emerald G - N Ruffled Poppy Show Bowl - Cracked and Reglued
- _____ 362. AO - N Ruffled Rose Show Bowl - Cracked and Reglued

SPECIAL NOTE:

NO SUNDAY CALLS, PLEASE!
Winning Absentee Bidders will be contacted Monday through Wednesday of the week following the Auction!

Thank You!


For Free Color Catalogs & Information Write:
 Mickey Reichel
 516 Third Street, Boonville, MO 65233-1536
 or Call: 660-882-5292 days or
 660-882-5283 evenings
 E-mail: mreichel@undata.com

NEED QUALITY CARNIVAL GLASS

*"We don't want all the Business,
 Just Yours."*

WE DO AUCTIONS RIGHT!!

- _____ 362A. Pastel AO Leaf Beads Rosebowl - Interior Crack
- _____ 363. Pumpkin M - N Ruffled Good Luck Bowl - Tip Off - Awesome
- _____ 364. G - N PCE Good Luck Vt. Bowl - BW Ext. Marie Chip
- _____ 365. P - N Singing Birds Butter Dish w/Lid - Base Cracked and Reglued
- _____ 366. G - Imp. Mayflower Gaslight Shade - Rim Chips
- _____ 367. B - Fenton 1911 Atlantic City Elks Bowl - Cracked and Reglued
- _____ 368. W - Imp. Homestead Chop Plate - Lg. Rim Chip
- _____ 369. W - Fenton 9" Ruffled Orange Tree Bowl - Base Bruise
- _____ 370. W - Fenton 8" ICS Leaf Chain Bowl - 5" Crack
- _____ 371. W - N Peach Butter Dish Lid - Rim Chip
- _____ 372. M - N Grape and Cable Tobacco Jar - Lid Cracked
- _____ 373. Smoky B - Imp. Ftd. Lustre Rose Fernery Bowl - Rim Chip
- _____ 374. G - N Acorn Burrs Punch Bowl Base - Cracked
- _____ 375. M - Grape and Cable Perfume Bottle w/Stopper - Base Cracked
- _____ 376. P - N Grape and Cable Hatpin Holder - Factory Flawed Foot
- _____ 377. Dark P - N Grape and Cable Hatpin Holder - Lip Missing

 **Approximately 70 additional pieces to be sold at end of Auction - All with Damage - Bowls, Tumblers, Vases and More.**

2002 CALENDAR

September 28, 2002

ANTIQUES AND ESTATE
 at Boonville, Mo. Auction Gallery
 Including A Great Fenton Collection
 Approx. 200 Plus Pieces

October 19, 2002

AT WICHITA, KANSAS
AIR CAPITAL CARNIVAL GLASS CLUB
CONVENTION

November 16, 2002

CARNIVAL GLASS COLLECTION
 at Boonville, Mo. Auction Gallery

January 4, 2003

12TH NEW YEARS
CARNIVAL GLASS EXTRAVAGANZA
 at Boonville, Mo. Auction Gallery

April 12, 2003

WORLD WIDE WEB
CARNIVAL GLASS CONVENTION
 St. Louis, Missouri

MICKEY REICHEL
ANTIQUE & AUCTION, L.C.
516 THIRD STREET
BOONVILLE, MO 65233-1536

PRESORTED
FIRST CLASS MAIL
US POSTAGE PAID
SEDALIA, MO
PERMIT 217

RETURN SERVICE REQUESTED

FIRST CLASS MAIL
SPECIAL INVITATION TO:

8*19*****MIXED AADC 650

LEE MARKLEY

PO BOX 306

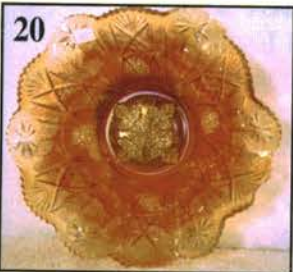
MENTONE, IN 46539-0306



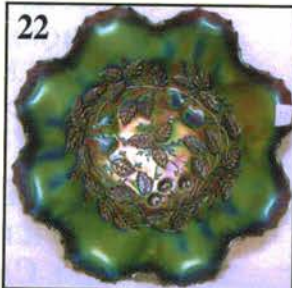
10



20



22



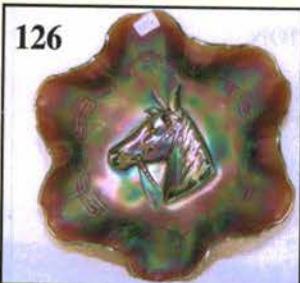
8



221



126



102



124



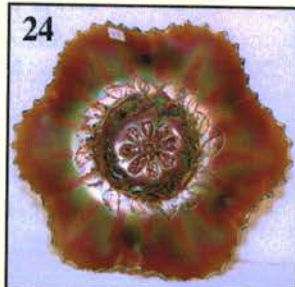
116



249



24



222



187

