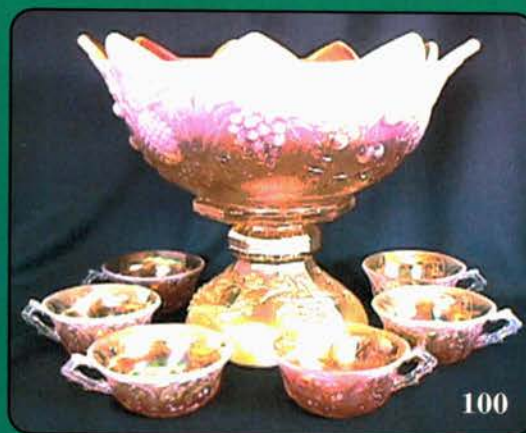


AUCTION

*Pacific Northwest Carnival Glass Club
Convention*



Saturday, August 10, 2002 -- 9:30 A.M.



**Greenwood Inn
10700 SW Allen Blvd at Hwy 217
Beaverton, Oregon**

Seeck Auctions
Jim and Jan Seeck 641-424-1116

Pacific Northwest Carnival Glass Club Convention Auction

SATURDAY, AUGUST 10, 2002 -- 9:30 A.M.

Greenwood Inn - Beaverton, Oregon

Harold & Shirley Vest Collection

Preview: Friday evening.

PNWCGC Convention Information: Contact Dennis Swafford at (503) 925-9301.

Reservations: For hotel reservations, please contact Dennis at the above number.

Terms: Cash. Checks accepted with proper I.D.

Don't forget to check out our website for many color pictures of this auction.

NO BUYER'S PREMIUM

www.seeckauktion.com

ABSENTEE BID POLICY

1. Write-in bids will be accepted by sending the numbers of the item(s) desired and the amount bid on each to:
Seeck Auctions, PO Box 377, Mason City, Iowa 50402.
2. If known by Auction Company, bids may be done over the telephone. (641)424-1116.
3. You may **email** your bids to us: **jimjan@seeckauktion.com** Continue to include the numbers of the item(s) you would like to bid on and amount bid on each, please include your telephone number.
4. There is a \$5 handling charge for each successful bid. Shipping and insurance charges are additional.
5. Bidders will be notified by phone if their bid(s) are successful. This call will be made 1 - 3 days after the auction.
6. Please have all bids in by **10 pm - Fri., Aug 2nd**. All bids (by mail, phone or **email**) after this date **and time** may not be carried out.
7. Please place bids in the following increments: \$1 to \$300 - \$5 increments \$300 up - \$25 increments.
8. **If you do not receive an item that sold for less than your bid, assume we cancelled your bid because the piece of glass had below average color, manufacture problem, damage or was not listed correctly.**
9. Auction results are posted on our website 1 - 3 days after the auction depending on drive time home from the sale.

WEBSITE: <http://www.seeckauktion.com>

- | | |
|---|---|
| ___ 1. Compote Vase - green - has Smooth Rays interior | edge, so sold together |
| ___ 2. Vintage ruffled compote - green | ___ 13. Blackberry Spray square shaped hat - red - very nice |
| ___ 3. Luster Flute ruffled sauce - marigold | ___ 14. Star of David & Bows domed ftd ruffled bowl - purple |
| ___ 4. Orange Tree ruffled compote - light lavender | ___ 15. Thumbprint & Ovals vase - marigold - very nice example of this rare vase |
| ___ 5. Blackberry Bramble ruffled compote - green | ___ 16. Bells & Beads ruffled 7" ruffled bowl - purple - fantastic |
| ___ 6. Iris ruffled compote - green | ___ 17. Ripple 8" vase - purple - super, has 3 3/8" base |
| ___ 7. Vintage Banded mug - marigold | ___ 18. Persian Medallion 6" plate - black amethyst - nice irid. on this rare color |
| ___ 8. Stream of Hearts ruffled compote - marigold | ___ 19. Persian Medallion 6" plate - marigold |
| ___ 9. Louisa rosebowl - amethyst | ___ 20. Orange Tree 9" plate - marigold - super pretty plate, dark |
| ___ 10. Double Stemmed Rose 3 in 1 edge domed ftd bowl - lavender - super super irid., as pretty as they can get | ___ 21. Orange Tree 9" plate - white - scarce |
| ___ 11. Lotus & Grape bon bon - green - has a tint of blue in the base color | ___ 22. Orange Tree 9" plate - blue - scarce |
| ___ 12. M'burg Hanging Cherries creamer & sugar - amethyst - very nice, sugar has some nicks on top | |

- ___ **22A. Hearts & Flowers PCE bowl - ice blue - scarce & desirable**
- ___ **23. Parlor Panels 11" vase - amethyst - has super lavender irid.**
- ___ 24. Parlor Panels 11" vase - marigold - dark & super
- ___ **25. Shell & Sand 9" plate - marigold - pretty irid. on this very rare plate**
- ___ 26. N's Thin Rib 7" squatty vase - marigold
- ___ 27. Grape & Cable 4 pc. table set - purple - very nice set, butterdish bottom has small manufacture open bubble on a point
- ___ **28. Field Thistle 6" plate - marigold - nice**
- ___ 29. Inverted Feather parfait - marigold
- ___ **30. Good Luck 9" plate w/ribbed back - green - super pretty example, rare**
- ___ 31. Holly ruffled compote - green
- ___ 32. Holly ruffled compote - pink
- ___ 33. Holly ruffled compote - amethyst
- ___ 34. Holly ruffled compote - powder blue
- ___ 35. Holly ruffled compote - marigold
- ___ **36. Poppy Show 9" plate - ice blue - scarce & desirable, nice**
- ___ **37. Poppy Show 9" plate - marigold - very nice & scarce, two minor small small pinpoint on base**
- ___ 38. Diamond Point Columns 16" vase - marigold
- ___ 39. Fenton's Fine Rib 10" vase - blue
- ___ 40. Peacock at the Fountain fruit bowl - marigold - dark & super, a chip on a foot
- ___ 41. Flute toothpick - purple - nice
- ___ 42. Flute toothpick - marigold - chip on point at bottom
- ___ **43. Jeweled Heart 11" ruffled bowl w/Smooth Rays interior - purple - fantastic**
- ___ 44. Big Basketweave two hldd basket - marigold
- ___ **45. N's Eight sided bushel basket - green - very rare color plus nice**
- ___ 46. Persian Medallion crimped edge ruffled compote - blue - nice
- ___ **47. Constellation ruffled compote - amethyst - super, super**
- ___ 48. Vintage 7" IC shaped bowl - green
- ___ 49. Stippled Flower ruffled bowl - peach opal
- ___ **50. M'burg Peacock at Urn giant ruffled compote - amethyst - satin & super, as nice as this rare compote can get**
- ___ 51. Waterlily & Cattails toothpick - marigold
- ___ 52. Australian Kookaburo large ruffled bowl - purple
- ___ 53. Smooth Panels 14" vase - marigold - nice
- ___ 54. Miniature Morning Glory 5" vases(2) - marigold - choice
- ___ **55. Lions 7" plate - marigold - very rare, super nice, as nice as I've sold**
- ___ 56. Vintage fernery - blue
- ___ 57. Grape & Cable sweetmeat - purple - nice
- ___ 58. Beaded cable rosebowl - marigold - has rayed interior
- ___ 59. Waterlily ftd ruffled sauce - blue
- ___ **60. Compliments of Central Shoe Store adv ruffled bowl - amethyst - super pretty example of a rare piece**
- ___ 61. Beaded Bullseye 11" vase - green
- ___ 62. Beaded Bullseye 12" vase - purple - super
- ___ 63. Beaded Bullseye 10" vase - marigold - nice
- ___ 64. Fenton's Flute 10" vase - green - scarce, has an aqua tint in base color
- ___ **65. Tree Trunk 13" mid size vase - green - very nice, scarce**
- ___ 66. File & Fan round compote - marigold on moonstone - nice
- ___ **67. Pinecone 6" plate - amethyst - scarce**
- ___ 68. Pinecone 6" plate - blue - nice
- ___ 69. Dogwood Spray dome ftd ruffled bowl - peach opal
- ___ **70. Hearts & Flowers ruffled compote - ice blue - super pretty example, scarce, tiny pinpoint on back edge of top**
- ___ **71. Hearts & Flowers ruffled compote - aqua opal - scarce, pinpoint on base**
- ___ 72. Grapevine Lattice ruffled 6" bowl - white - chip on edge
- ___ 73. Fenton Peacock at Urn IC shaped bowl - blue - nice
- ___ 74. Two flowers ftd ruffled sauce - aqua - scarce color
- ___ **75. Lotus & Grape 9" plate - amethyst - super rare & nice, a top Fenton plate**
- ___ **76. Lotus & Grape 9" plate - green - very desirable, another rare plate**
- ___ 77. Scales 6" plate - amethyst
- ___ 78. Raspberry water pitcher - green - scarce & nice
- ___ 79. Raspberry tumblers(2) - green - choice

- ___ 80. Pinecone 7" plate - amethyst - fantastic plate, rare
- ___ 81. Leaf Rays nappy - purple - pretty
- ___ 82. M'burg Peacock at Urn ruffled bowl - amethyst - satin & super, a couple of pinpoints on base
- ___ 83. Miniature Morning Glory 8" vase - white - very rare color
- ___ 84. Miniature Morning Glory 8" vase - smoke - nice
- ___ 85. Old Rose Distillery/Stippled Grape & Cable 9" plate w/ribbed back - green - a killer, could be one of the best we've sold
- ___ 86. Persian Medallion hair receiver - marigold
- ___ 87. Little Flowers 6" plate - marigold - scarce
- ___ 88. Loganberry vase - green/helios
- ___ 89. Peacock & Grape IC shaped bowl - blue
- ___ 90. Peacocks 9" plate w/ribbed back - purple - super pretty & scarce
- ___ 91. Peacocks 9" plate w/ribbed back - white - scarce & nice
- ___ 92. Ski Star large ruffled bowl - peach opal - pinpoint on edge
- ___ 93. Orange Tree standard size shaving mug - blue
- ___ 94. Windflower ruffled bowl - marigold - nick on point
- ___ 95. Holly 9" plate - blue - nice
- ___ 96. Holly 9" plate - marigold - nice
- ___ 97. Holly 9" plate - clambroth
- ___ 98. Fern ruffled compote - purple
- ___ 99. April Showers 7 1/2" squatty vase - amethyst
- ___ 100. Fruit Salad 8 pc punch set - peach opal - extremely rare & super, great set
- ___ 101. Beads ruffled bowl - green
- ___ 102. Palm Beach 7" plate - amethyst - very rare
- ___ 103. Stippled Petals dome ftd ruffled bowl - purple
- ___ 104. Golden Grape ruffled bowl - marigold
- ___ 105. Two Flowers spt ftd 9" plate - marigold - very nice even irid., scarce
- ___ 106. Lattice & Points 7" vase - marigold
- ___ 107. Chrysanthemum 10" IC shaped ftd bowl - blue - super pretty
- ___ 108. Chrysanthemum 10" IC shaped ftd bowl - marigold - pretty
- ___ 109. Wreath of Roses bon bon - green
- ___ 110. Stippled Three Fruits spt ftd ruffled bowl - aqua opal - scarce & nice
- ___ 111. Four Pillers 10" vase - aqua opal - chipped feet
- ___ 112. M'burg Rosalind large ruffled bowl - marigold - satin & pretty
- ___ 113. M'burg Peacock 6" plate - amethyst - not as flat as some, but I have to call it a plate, nice satin
- ___ 114. Vintage 3 in 1 edge bowl - amethyst
- ___ 115. Daisy & Drape flared out vase - aqua opal - super nice, scarce
- ___ 116. Peacock Tail ruffled hat - blue
- ___ 117. Imperial Grape wine bottle - purple - stopper damaged
- ___ 118. Imperial Grape wine bottle - marigold - dark
- ___ 119. Imperial Grape wine - marigold
- ___ 120. Fruits & Flowers bon bon - ice green - super pretty, rare
- ___ 121. Fruits & Flowers bon bon - lavender - super pretty, scarce
- ___ 122. Fruits & Flowers bon bon - blue - nice
- ___ 123. Fenton's Three Fruits 9" plate - blue - nice
- ___ 124. Grape & Cable powder jar - purple - minor nick on lid
- ___ 125. Captive Rose 9" plate - green - super pretty irid. on this rare plate
- ___ 126. Captive Rose 9" plate - blue - scarce
- ___ 127. Cherry Chain 6" plate - marigold - nice
- ___ 128. M'burg Strawberry Wreath ruffled compote - amethyst - radium & fantastic
- ___ 129. Imperial Grape ruffled compote - amber
- ___ 130. Fenton's Peacock at Urn 9" plate - blue - fantastic irid. on this highly desirable plate
- ___ 131. Fenton's Peacock at Urn 9" plate - marigold - pretty & scarce
- ___ 132. Dragon & Lotus spatula ftd ruffled bowl - marigold
- ___ 133. Mikado giant ruffled compote - marigold - super, scarce
- ___ 134. Rib 11" vase - marigold
- ___ 135. Wishbone & Spades 6" plate - purple - has adv from "The Golden Rule, Ivanhoe Minn.", Lattice back
- ___ 136. Blackberry ruffled compote - marigold
- ___ 137. N's Bushel Basket - aqua opal - scarce & nice, butterscotch
- ___ 138. N's Bushel Basket - marigold - dark, open bubble on foot

- ___ 139. M'burg Blackberry Wreath 7" ruffled bowl - green - radium
- ___ **139A. Rose Show 9" plate - lime green/vaseline - extremely rare plate for a highly desired pattern, nice**
- ___ **140. Rose Show 9" plate - blue - very rare & desirable**
- ___ **140A. Rose Show 9" plate - white - scarce**
- ___ 141. Corinth 5" pinched in vase - peach opal
- ___ 142. Australian Magpie large ruffled bowl - marigold
- ___ 143. Heavy Grape 8" plate w/smooth edge - marigold - scarce edge treatment
- ___ 144. Heavy Grape 8" plate - green
- ___ **145. N's Peacock at Urn master IC Bowl - ice green - super pretty & highly desirable, rare**
- ___ **146. N's Peacock at Urn master IC bowl - ice blue - also a super rare beauty**
- ___ 147. N's Six Sided Trumpet candlesticks - jade blue - stretch
- ___ 148. Estate vase - lime green - very scarce
- ___ 149. Flowering Dill JIP CRE hat - marigold
- ___ **150. Orange Tree Scroll tankard water pitcher - blue - super pretty rarity, wow!**
- ___ 151. Fentonia ftd berry dish - marigold
- ___ 152. Leaf Tiers tumbler - marigold
- ___ **153. Embroidered Mums ruffled bowl w/ribbed back - blue - scarce & nice**
- ___ **154. Orange Tree IC shaped bowl - green - scarce color**
- ___ **155. Persian Garden 6" plate - purple - very pretty & rare color**
- ___ 156. Persian Garden 6" plate w/Pool of Pearls back - white - scarce
- ___ 157. N's Footed Fine Rib JIP vase - purple - neat
- ___ **158. Drapery rosebowl - blue - very pretty**
- ___ 159. Cherry Chain card tray shaped bon bon - blue
- ___ **160. N's Corn vase w/plain base - marigold - rare & desirable**
- ___ **161. N's Corn vase w/plain base - green - scarce & nice**
- ___ **162. N's Corn vase - purple - scarce & nice**
- ___ **163. N's Corn vase - white - super pretty**
- ___ 164. M'burg Hanging Cherries round sauce - marigold - radium
- ___ **165. Holly goblet shaped compote - red - very scarce, nice**
- ___ 166. Holly goblet shaped compote - powder blue
- ___ **167. Raspberry milk pitcher - purple - scarce, pretty**
- ___ 168. Beaded Shell mug - purple
- ___ 169. Leaf Rays nappy - marigold
- ___ **170. Stippled Three Fruits 9" plate w/ribbed back - blue - very scarce color, highly desirable**
- ___ **171. Stippled Three Fruits 9" plate w/ribbed back - purple - very pretty example**
- ___ **172. Stippled Three Fruits 9" plate w/ribbed back - marigold - pretty**
- ___ 173. M'burg Peacock Tail Variant ruffled compote - marigold - radium
- ___ 174. N's Stippled Rays deep ruffled bowl - purple
- ___ **175. Stippled Three Fruits PCE bowl w/ribbed back - green - very rare bowl, nice**
- ___ 176. Scroll Embossed ruffled compote - green
- ___ 177. Miniature Thin Rib & Drape 5" vase - marigold
- ___ 178. Pansy ruffled bowl - purple - very pretty
- ___ 179. April Showers 13 1/2" vase - marigold
- ___ **180. Leaf Chain 9" plate - marigold - lots of pink & yellow irid., beautiful**
- ___ 181. Captive Rose CRE bowl - green - pretty
- ___ 182. Thistle banana boat - blue - scarce
- ___ 183. Fenton's Peacock at Urn ruffled compote - lime green - scarce color
- ___ 184. Basketweave Open Edge ruffled hat - blue
- ___ **185. Two Flowers lg ftd ruffled bowl - aqua - very rare color & nice, even irid.**
- ___ **186. Star Burst perfume bottle - marigold - Hartung book 7, or HOACGA Bulletin Feb. 2002**
- ___ **187. Frisco or Beaded Teardrop 5 7/8" miniature vase - marigold - a neat miniature**
- ___ 188. Little Flowers round sauce - blue
- ___ 189. Little Flowers IC shaped sauce - powder blue w/marigold overlay - pretty
- ___ **190. Panther master berry bowl - blue - super pretty, scarce**
- ___ 191. Daisy Wreath IC shaped bowl - marigold on moonstone - minor nick on base
- ___ 192. Good Luck ruffled bowl w/BW back - purple - nice

- ___ **193. Kittens cereal bowl - blue - prettiest blue kittens piece I've seen**
- ___ 194. Kittens 4 sided dish - marigold
- ___ 195. Grape & Cable Variant 9" plate w/BW back - green - super
- ___ 196. Grape & Cable Variant 9" plate w/plain back - purple - nice
- ___ 197. Ripple 10" vase - purple - nick on top edge
- ___ 198. Imperial Grape 6" plate - purple - very pretty
- ___ 199. Scroll Embossed w/File back ruffled sauce - purple - electric
- ___ **200. Holly 3 in 1 edge bowl - marigold on milkglass - one of only two I know of, extremely rare & nice**
- ___ 201. M'burg Blackberry Wreath round sauce - marigold - radium
- ___ 202. Grape & Cable tankard 5 pc. water set - purple - rare but pitcher is cracked
- ___ 203. Pansy creamer - lavender - pretty
- ___ 204. Pansy sugar - smoke
- ___ **205. Four Flowers 10" ruffled bowl - purple - fantastic electric irid., a real dandy**
- ___ 206. Dragon & Lotus ruffled bowl - marigold
- ___ **207. Petal & Fan crimped edge 6" plate - purple - scarce & nice**
- ___ **208. Pansy ruffled plate or flat ruffled bowl - lavender - pretty**
- ___ 209. Feathered Serpent tri-cornered sauce - amethyst
- ___ **210. Good Luck 9" plate w/BW back - purple - very scarce & desirable**
- ___ 211. Persian Medallion ruffled sauce - lime green
- ___ 212. Persian Medallion ruffled sauce - marigold
- ___ **213. Round Up 9" plate - purple - very scarce & desirable**
- ___ 214. Imperial Grape round bowl - marigold - exterior pattern only
- ___ **215. Stippled Peacocks 9" plate w/ribbed back - blue - pretty & scarce**
- ___ 216. Lattice & Points 7" ruffled bowl - marigold
- ___ 217. Greek Key PCE bowl w/BW back - green - pretty, minor manufacture peeling on base
- ___ 218. Little Flowers 10" deep round bowl - marigold
- ___ 219. Panelled Diamond & Bows 8" vase - blue
- ___ **220. Peacock & Grape 9" plate - marigold - scarce & desirable**
- ___ 221. Rococco vase - marigold - pretty
- ___ 222. Lions 7" IC shaped bowl - marigold - nice
- ___ 223. Fenton's Peacock at Urn ruffled bowl - green - scarce color
- ___ 224. Spiralex 10 1/2" vase - amethyst
- ___ **225. Peacock at the Fountain ruffled compote - blue - super pretty, very scarce item**
- ___ 226. Maple Leaf creamer - purple
- ___ **227. Leaf Chain 7" ruffled bowl - red - scarce & desirable**
- ___ 228. M'burg Boutonniere ruffled compote - green - radium, nice
- ___ 229. Spiral Candle candlesticks - marigold
- ___ **230. Peacocks PCE bowl w/ribbed back - marigold - super pretty, dark & nice**
- ___ 231. Persian Medallion 7" IC shaped bowl - green - open bubble on base
- ___ **232. Dandelion mug - marigold - dark & nice**
- ___ 233. Drapery candy dish - ice blue - super irid.
- ___ 234. Vintage bon bon - amethyst
- ___ **235. Greek Key 9" plate w/BW back - green - super pretty, a dandy**
- ___ 236. Hen on Nest - marigold
- ___ **237. Vintage 6" plate - marigold - scarce size, dark**
- ___ 238. Acorn ruffled bowl - aqua - scarce color
- ___ 239. Basketweave Open Edge ruffled basket - marigold
- ___ **240. Braziers Candies handgrip advertising plate - amethyst - extremely rare, silvery**
- ___ 241. Fine Cut & Roses rosebowls(2) - purple - choice
- ___ **242. Hearts & Flowers ruffled bowl w/ribbed back - ice blue - scarce**
- ___ 243. Rustic 16" mid-size vase - amethyst - nice
- ___ 244. Windmill milk pitcher - marigold
- ___ **245. Pony 6 ruffled bowl - amethyst - very unusual bowl, it is 6 ruffled and it has a radium finish**
- ___ 246. N's Thin Rib 11" vase - purple - nice
- ___ **247. Stippled Rays ruffled bowl - reverse amberina - absolutely super**
- ___ 248. Persian Medallion ruffled bowl - marigold - pretty
- ___ 249. Three pieces, damaged - all to go
- ___ **250. Grape Arbor 7 pc tankard water set - white - very rare & desirable, frosty & nice**
- ___ 251. Two Fruits divided bon bon - blue - has buffed spot on the divider

- ___ **252. M'burg Leaf & Little Flowers ruffled compote - amethyst - radium & super**
- ___ **253. M'burg Leaf & Little Flowers goblet shaped compote - green - satin & nice**
- ___ 254. Strawberry ruffled bowl w/BW back - marigold
- ___ **255. Nippon PCE bowl - ice blue - very pretty**
- ___ 256. Wild Rose Open Edge ftd bowl - horehound - very scarce color
- ___ **257. Holly 3 in 1 edge bowl - aqua - rare edge & color, nice**
- ___ 258. Double Dolphin round compote - vaseline stretch
- ___ 259. Floral & Optic round bowl - clambroth - nick on foot
- ___ **260. Stippled Grape & Cable 9" plate w/ribbed back - green - very very scarce plate**
- ___ 261. Lustre Flute hat - amethyst
- ___ 262. Scroll Embossed round bowl - purple - super!
- ___ 263. M'burg Holly Sprig 10" ruffled bowl - amethyst - radium
- ___ 264. Spiral Diamond & Point Fan 6" vase - marigold - very scarce vase
- ___ **265. Grape & Cable candlesticks - green - fantastic & scarce**
- ___ 266. Golden Grape rosebowl - marigold
- ___ 267. M'burg Zig Zag 3 in 1 edge bowl - satin & scarce
- ___ 268. Strawberry 9" plate w/BW back - amethyst - nice
- ___ 269. Dugan's Cherries crimped edge ftd bowl - peach opal
- ___ **270. Stippled Good Luck 9" plate w/ribbed back - blue - super pretty plate!**
- ___ 271. Fluffy Peacock tumbler - amethyst
- ___ 272. Australian Butterfly & Bells ruffled compote - purple
- ___ 273. Knotted Beads crimped edge 8" vase - marigold
- ___ 274. Strawberry bon bon - marigold
- ___ **275. Hearts & Flowers 9" plate w/ribbed back - marigold - super pretty, dark & nice**
- ___ 276. Grape & Cable cardtray shaped plate - green - fantastic, has nick on base
- ___ 277. N's Peacock at Urn IC sauce - purple
- ___ 278. Three Fruits 9" plate w/BW back - purple
- ___ 279. Panther ftd round sauce - blue - pretty
- ___ **280. Grape & Cable dresser tray - purple - scarce & desirable**
- ___ 280A. Butler Brother's reprinted catalog - not available any more
- ___ 281. Luster Rose tumbler - marigold
- ___ **282. M'burg Hobnail rosebowl - marigold - scarce, nice**
- ___ 283. Golden Harvest wines (4) - amethyst - choice
- ___ 284. Diamond Points 10" vase - purple
- ___ **285. Fruits & Flowers 7" plate - purple - scarce, silvery**
- ___ 286. Fenton's Flowers rosebowl - blue
- ___ **287. Buzz Saw small size cruet - green - very rare & desirable**
- ___ 288. Sailboats wine - marigold - pretty
- ___ 289. Stork & Rushes mug - marigold
- ___ **290. M'burg Sunflower pintray - amethyst - very rare & highly desirable**
- ___ 291. Imperial Grape wines(2) - green - choice
- ___ 292. Leaf & Beads rosebowl - amethyst - pretty
- ___ 293. Pinecone 6" saucer shaped plate - blue - silvery
- ___ 294. Four Flowers 6" plate - peach opal - nice
- ___ **295. Persian Medallion 9" plate - blue - super, super pretty & rare**
- ___ 296. 12 Pieces of Carnival glass - sold choice
- ___ 297. 10 Pieces of Carnival glass - sold choice
- ___ 298. 10 Pieces of Carnival glass - sold choice
- ___ 299. 10 Pieces of Carnival glass - sold choice
- ___ 300. 10 Pieces of Carnival glass - sold choice
- ___ 301. 10 Pieces of Carnival glass - sold choice

**** See Our Website for A Listing of These Choice Lots**

Seeck Auctions

P.O. Box 377
Mason City, Iowa 50402

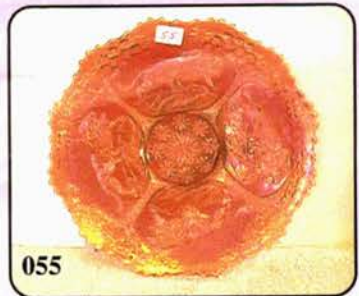
PRESORTED
FIRST-CLASS MAIL
U.S. POSTAGE PAID
MINNEAPOLIS, MN
PERMIT NO.28534



150

*****AUTO**MIXED AADC 553

Lee Markley
PO Box 306
Mentone, IN 46539-0306



055



075



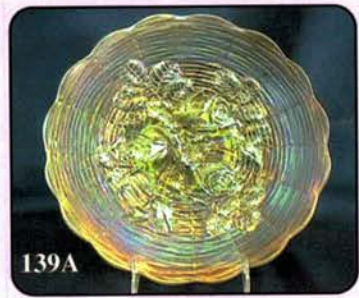
090



125



130



139A



145



175



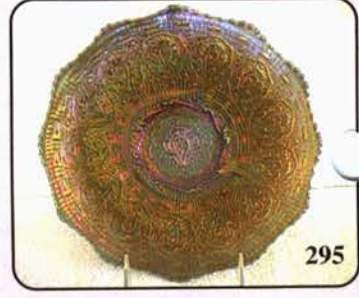
200



225



270



295