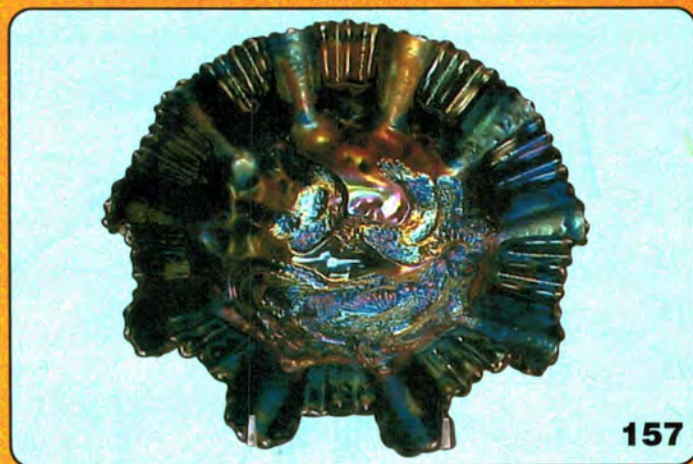
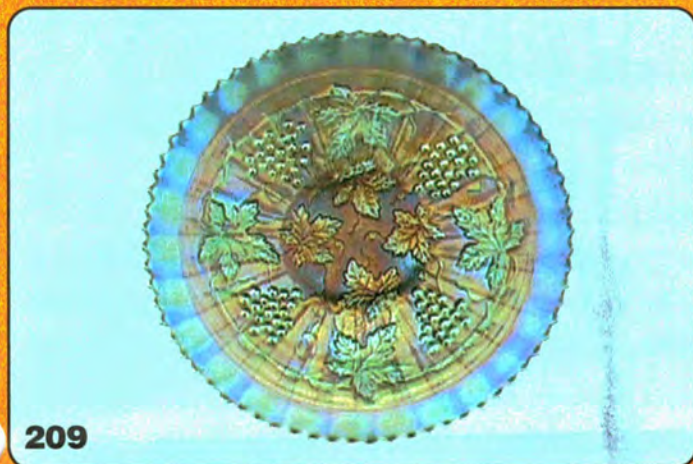


International Carnival Glass Association Convention

AUCTION

Saturday, July 20, 2002 -- 9:00 AM



Ramada Inn

3551 Penridge Dr.
St. Louis (Bridgeton), Missouri

Reservations: 1-317-291-5100

Auction managed by The International Carnival Glass Association.

President: Richard Cinclair (972)596-0014

Vice President: Tom Mordini (815)235-4407

SATURDAY, JULY 20, 2002 -- 9:00 A.M.

Ramada Inn - St. Louis, Missouri

The ICGA is pleased to have a wonderful selection of glass this year for auction. Jim Seeck from Seeck Auctions will be the club auctioneer. Any questions about the glass, please call Richard Cinclair or Tom Mordini. The convention will run from July 16th to the 20th and will be held in the Ramada Inn (formerly the Holiday Inn) in St. Louis (Bridgeton), Missouri. The ICGA has a great rate of \$59.00 per night (singles or doubles), so make your reservations soon!

Seeck Auctions has no responsibility for the management of the auction.

ABSENTEE BID POLICY

1. Write-in bids will be accepted by sending the numbers of the item(s) desired and the amount bid on each to:
Seeck Auctions, PO Box 377, Mason City, Iowa 50402.
2. If known by Auction Company, bids may be done over the telephone. (641)424-1116.
3. You may **email** your bids to us: **jimjan@seeckauction.com** Continue to include the numbers of the item(s) you would like to bid on and amount bid on each, please include your telephone number.
4. There is a \$5 handling charge for each successful bid. Shipping and insurance charges are additional.
5. Bidders will be notified by phone if their bid(s) are successful. This call will be made 1 - 3 days after the auction.
6. Please have all bids in by **Tues., July 16th**. All bids (by mail, phone or **email**) after this date may not be carried out.
7. Please place bids in the following increments: \$1 to \$300 - \$5 increments \$300 up - \$25 increments.
8. **If you do not receive an item that sold for less than your bid, assume we cancelled your bid because the piece of glass had below average color, manufacture problem, damage or was not listed correctly.**

WEBSITE: <http://www.seeckauction.com>

- | | | | |
|---------------------|---|--------------|---|
| <u>90</u> <u>x2</u> | 1. W Blueberry Tumblers(2) choice | <u>250</u> | 15. Daisy Square Rosebowl |
| <u>185</u> | 2. A Good Luck Bowl | <u>55</u> | 16. Octagon toothpick holder |
| <u>85, 65</u> | 3. B Orange Tree Scroll Tumbler | <u>175</u> | 17. M Daisy Cut Bell |
| <u>75</u> | 4. M Orange Tree Scroll Tumbler | <u>30</u> | 18. M Inverted Feather compote |
| <u>135</u> | 5. G Dandelion Tumbler | <u>155</u> | 19. W Daisy & Drape Vase |
| <u>145</u> | 6. G Wishbone Tumbler | <u>60</u> | 20. PO Honey Comb Rosebowl |
| <u>95</u> | 7. A Wishbone Tumbler | <u>375</u> | 21. M Oriental Poppy & 6 tumblers |
| <u>85, 60</u> | 8. G Acorn Burrs Tumblers (2) choice | <u>525</u> | 22. W Oriental Poppy Pitcher & 1 tumbler |
| _____ | 9. W Orange Tree Tumbler - 55-130 | <u>450</u> | 23. B Butterfly & Plume & 6 tumblers |
| _____ | 10. M Orange Tree Orchard Tumbler | <u>300</u> | 24. M Butterfly & Plume & 6 tumblers |
| <u>550</u> | 11. A Seacoast Pin Tray | <u>175</u> | 25. M Grape & Gothic Arches & 6 tumblers |
| <u>85</u> | 12. M Star & File Wine set (5 glasses) | <u>500</u> | 26. M Blackberry Block 1 tumbler |
| <u>50</u> | 13. A G & C Powder * - 150 | <u>30 x2</u> | 27. M Blackberry Block Tumblers (2) choice |
| <u>145</u> | 14. G Inverted Strawberry Powder (roughness on lid) | | |

- Orchard
28. B Orange Tree Pitcher 1 tumbler 275
29. B Orange Tree Tumbler 95 Orchard
30. A Wishbone Tankard & Tumbler 625 pitcher get size & dimensions
31. Teal Ripple 10 1/2" vase 175
32. P Scroll Embossed Bowl, 7" 75
33. B Round Up Bowl Low Ruffled 175
34. A Round Up Bowl Low Ruffled 235
35. PO Round Up Bow Low Ruffled 185
36. W Round Up Bowl Low Ruffled 155
37. G Strawberry PCE Bowl 85
38. R Blackberry Open Edge Basket 205
39. B Persian Medallion Chop Plate 195
40. B Persian Medallion 6" plate 75
41. W Orange Tree Orchard Tumbler 65
42. A Dahlia Tumbler 180
43. M Beaded Heart Tumbler 85 jeweled
44. P Oriental Poppy Tumbler 65
45. A Springtime Tumbler 105
46. A Blackberry Block Tumbler 105
47. B Milady Tumbler - ~~100~~ 55
48. B Blackberry Block Tumble 45
49. *Smoke Soda Gold Tumbler 105 returned
50. M Inverted Strawberry Tumbler 250
51. A Unlettered Court House Bowl, ICS tiny man. flaw, Super RARE 1300
52. B Owl Hatpin, Pretty & RARE 1600
53. BA Dragonflies Hatpin 50
54. Amber Rooster Hatpin 55
55. BA Squares & Triangles Hatpin 40
56. Dark Waves Hatpin 115
57. Lite Marigold Fly on Net Hatpin 130
58. BA Koolie Hatpin
59. G Wild Rose Large Size (6.25" base) Lamp 1900
60. M Zipper Loop large size lamp 625
61. W Floral & Grape Pitcher & 6 tumblers 375
62. M Fluffy Peacock Pitcher & 6 tumblers 550
63. B Butterfly & Berry Pitcher & 6 tumblers 30x3 15
64. G Four Flowers Vt. Bowl 125
65. A Inverted Strawberry Tumbler 175
66. A Hobnail Pitcher (flaw) 1100
67. A Inverted Thistle Tumbler 230
68. G Butterfly & Berry Tumblers(6) choice 175 100x45
69. IB Grape Arbor Tankard, tiny flaw 250
70. IB Grape Arbor Tumbler 125
71. B Kittens Bowl, 4 sides up 215
72. Powder Blue Kittens, 4 sides up 125
73. M Octagon Table Set 125
74. M Octagon Water Set 155 small size get size & dimensions
75. A Tree Trunk 9.5" vase 45
76. M Ripple mid size vase 4" Base, 14.75" high 95
77. R Fine Rib Vase, 9.5" flake 230
78. M Lattice & Daisy Water Set 140 get next of dimensions
79. A Acorn Burrs Table Set 350
80. M Octagon Cordial 115
81. AO Peacocks Bowl, Super example 1100
82. A Acorn Burrs Pitcher 275
83. A Acorn Burrs Tumblers(2) 75, 65
84. M Broken Arches Punch Set 250
85. B Captive Rose Plate 375
86. G Double Star Pitcher 325
87. G Double Star Tumblers(2) 45x2
88. AO Drapery Rosebowl 200
89. M Good Luck PCE Bowl 135
90. G Old Rose Distillery Plate 450

- 200 91. P Blossomtime Compote
- 150 92. Smoke ^{Amy} Bushel Basket ~~check~~
- 225 93. G Butterfly & Berry Spooner, hard to find
- 105 94. BA Embroidered Hatpin
- 105 95. B Leaf and Beads Rosebowl
- 35 96. M Leaf & Beads Rosebowl
- 115 97. G Mini Morning Glory Vase
- 85 98. P Morning Glory Vase, 7.5"
- 40 99. Smoke Mini Morning Glory Vase
- 40 100. M ^{thin rib} Pillar & Drape mini vase
- 75 100A ^{white plain pitcher} ~~100A~~
- 85 101. M Kittens Toothpick
- 250 102. G Eight Sided Bushel Basket - excellent ~~check to see whether to Emerald~~
103. G Wishbone collar based Bowl
- 30 104. G Grape & Cable STIPPLED Punch Cup
- 65 105. M Horse Medallion ftd Bowl
- 35 106. M Orange Tree Powder w/cover
- 40 107. M Shell & Sand Bowl, Spectacular
- 175 108. A Grape & Cable Cup & Saucer
- 65 109. G Little Stars ruffled bowl, base chip
- 75 110. A Wishbone ftd Bowl ^{feet}
- 900 111. G Inverted Strawberry Tankard ^{decors}
- 250 112. P Wreathed Cherries Pitcher1 tumbler ^{get paid to drink}
- 45 113. P Wreathed Cherries Tumbler
- 1000 114. B Fluffy Peacock & 1 tumbler
- 900 115. M Springtime Pitcher & 6 tumblers
- 950 116. B Blueberry Tankard & 6 tumblers
- 600 117. A Grape Arbor Tankard & 6 tumblers
- 175 118. M Grape Arbor & 6 tumblers
- 500 119. G Paneled Dandelion Tankard & 6 tumblers
- 625 120. A Greek Key Pitcher & 6 tumblers
- 250 121. B Kittens Cup (No saucer)
- 75 122. M Kittens 4 sides up bowl
- 250 ^{Bl} 123. M Kittens 6 ruffle ~~bowl~~
- 155 124. Vaseline Orange Tree Shaving Mug
- 450 125. Mandarin Red Orange Tree Shaving Mug
- 350 126. M (Pastel) Corn Vase - plain base
- 225 127. P Corn Vase - plain base
- 400 128. G Corn Vase - plain base
- 750 129. A - Rose Show Plate good color
- 1800 130. G Peter Rabbit Bowl, ^{ICS} Ruffled & rare
- 65 131. M Two Handled Hobstar Band Celery - scarce
- 185 132. Blue Opal Pillow & Sunburst 8" Bowl, rare color
- 500 133. M Millersburg Hobnail "ladies" cuspidor
- 90 134. G Stag & Holly Spatula ftd. Bowl
- 65 135. M - Millersburg Hanging Cherries 8" Bowl, pastel
- 105 136. G Vintage 7.25" plate
- 105 137. A Whirling Leaves (" deep bowl
- 105 138. G Two Fruits Divided Candy Dish
- 45 139. M Cathedral Chalice
- 155 140. M Horse Medallion Plate , lite
- 95 141. P Windmill Tumbler
- 85 142. A ^{Gr} Oriental Poppy Tumbler
- 25 143. B Grape & Gothic Arches Tumbler
- 95 144. W Peach Tumbler
- 105 145. A Inverted Strawberry Tumbler
- 40 146. A Acorn Burrs Tumbler
- 95 147. G Springtime Tumbler
- 75 148. B Peach Tumbler
- 50 149. M Acorn Burrs Tumbler
150. A Fluffy Peacock Tumbler
151. M Child's feeding dish, unlisted with 4 leaf clover - similar to Bo Peep

- _____ 152. *Violet Imperial Scroll Embossed compote, plain ext.
- _____ 153. **M Peacock at Urn 6" plate**
- _____ 154. **P Hattie Bowl, electric** *cologne bottle*
- 40 155. M Thumbprint Scroll & Leaf w/stopper
- 70 156. M Rolled Ribs Spittoon, 7 3/4" x 4.75" mouth w/enameled leaves
- 8000 157. **P Farmyard Bowl, 3 in 1 edge, WOW!!!!, The Best**
- 350 158. M Peacock at Urn 9" Plate, Dark & Pretty
- 550 159. **A Diagonal Band BLANK tankard water pitcher (no enameling) rare**
- 85 160. **M Vase 12" high, similar to** *radiant* **Webbed Clematis Vase, Unusual**
- 2000 161. **M Soldiers & Sailors Plate**
- 450 162. **IB Knights Templar Mug**
- _____ 163. **M Knights Templar Mug**
- _____ 164. **IG Knights Templar Mug**
- _____ 165. **G Elks 1910 Ruffled Bowl**
- _____ 166. Isaac Benesch 6 ruffle bowl
- _____ 167. A Court House 6 ruffle bowl
- _____ 168. A Shriner 1908 Toothpick (rare Sheath of Wheat)
- _____ 169. 1906 Syria Pittsburgh (Brown, Willocks, Nagel, McCume)
- _____ 170. 1909 Shriner's Louisville Double Shot Glass (Cranberry & Clear)
- 200 171. A Country Kitchen Butter Dish
- 175 172. M G & C Hatpin Holder
- _____ 173. BA Flying Bat Hatpin
- 275 174. **A G & C Cracker jar Great color**
- 325 175. **A G & C Humidor**
- 40 176. M Springtime Spooner
- 2300 177. **M G & Cable Master Punch Bowl, 14 pieces**
- 115 178. W Persian Medallion 6" plate
- 450 179. **M Nuart-Chrysanthemum Chop Plate**
- 60 180. M Fisherman's Mug
- 105 181. Amber Open Rose Plate
- 225 182. **M Peacock & Grape Plate**
- 95 183. A Millersburg Peacock Sauce
- 275 184. **IG Peacocks Plate**
- 450 185. M Peacocks Plate
- _____ 186. G Primrose 10" Bowl
- 135 187. A Primrose radium Bowl
- 165 188. W Question Mark ftd. Plate
- 600 189. **B Rose Show Plate**
- 255 190. PO Round Up ruffled plate
- 750 191. **R Dragon & Lotus Bowl**
- 850 192. **Amethyst Opal Dragon & Lotus Bowl**
- 200 193. A Davidson's Chocolates, 2 sides up
- 350 194. **A Trout & Fly Bowl**
- 275 195. A Peacocks on the Fence, PCE Bowl
- 900 196. A Three Fruits Stippled Plate, excellent
- 105 197. Amber Dragon and Lotus Bowl
- 275 198. **R Acorn 7.5" Bowl**
- 400 199. B Hearts & Flowers Compote
- 450 200. **A Peacock at the Fountain Compote, seldom seen**
- 155 201. M Webbed Clematis w/factory enameled flowers, tiny inside rim, only one reported
- 55 202. M Decanter w/stopper, Unlisted & only one reported *stars & stripes*
- 300 203. **Vaseline Fenton Stippled Rays Compote, ICS no overlay**
- 80 204. M Decanter w/stopper, Unlisted w/village scene
- 450 205. **B Good Luck rfid bowl, electric, thin base**
- 35 206. M Imperial Grape Tumbler w/Band of Gold around top, 1 of six reported

- 145 207. W Palm Beach rosebowl whimsey, Gooseberry interior, nice gold
- 65 208. M Imperial Grape whimsey plate from 7.5" bowl, flat
- 2000 209. Sapphire Grape & Cable Stippled Plate, terrific
- 850 210. G Rose Show Bowl, great piece
- 600 211. A Rose Show Bowl
- 125 212. M Coral 9" bowl
- 135 213. M Little Fishes master berry bowl
- 150 214. M Mikado Compote, dark color
- 185 215. B Good Luck pce bowl
- 85 216. G Heavy Grape Chop Plate
- 1500 217. W Many Fruits Punch Bowl & Base
- 65 218. A Circle Scroll Master Berry (only one known?)
- 200 219. A Garden Mums 6" plate (no advertising)
- 50 220. Green Sailboats Sauce
- 200 221. Green Tornado Vase, always in demand! *
- 50^{x2} 222. P Peacock at the Fountain Punch Cup (2) choice ~~check to see how dark~~ ^{hope}
- 105 223. M Kittens 2 sides up
224. Green G & C Creamer (Breakfast Set)
- 10 225. Green G & C Sugar (Breakfast Set)
- 75 226. A Double Stem Rose - dome ftd. Bowl, radium
- 60 227. Green Grape & Cable bowl, PCE
- 65 228. W Grapevine Lattice plate
- 90 229. G Holly bowl, 3 in 1 edge
- 125 230. B Orange Tree bowl, ICS
- 1000 231. IB Wishbone low ftd bowl, the BEST
- 145 232. G Three Fruits Medallion ftd STIPPLED Bowl
- 95 233. W Stretch CUSPIDOR, interior ribs???
- 130 234. PO Nautilus
- 145 235. M Peacock at Urn 9.5" Millersburg
- N4 236. P Holly & Berry???
- 65 237. W Persian Garden 6" Plate, Pool of Pearls exterior
- 105 238. Amber Ripple Vase 7"
- 95 239. Amber Ripple Vase 7.5"
- 75 240. Helios Ripple Vase
- 170 241. G Seaweed 10" Bowl
- 115 242. G Strawberry Plate, BW Back
- 105 243. M Strawberry Plate. BW back
- 215 244. B Ten Mums Bowl
- 85 245. A Three Fruits Plate, BW Back
- 75 246. M Three Fruits Plate, BW Back
- 80 247. M Fenton 12 sided Three Fruits Plate
- 215 248. B Windflower Plate
- 215 249. A ZigZag 3 in 1 edge bowl
- 350 250. G Diamonds Pitcher & 6 tumblers
- 250 251. B Floral & Grape Pitcher & 6 tumblers
- 200 252. G Dandelion Tankard *
- 250 253. M Dandelion Tankard & 1 tumbler
- 20x3 254. M Dandelion Tumblers (3) choice
- 600 255. M Milady Tankard & 6 tumblers
- 150 256. M Apple Tree Pitcher & 6 tumblers
- 575 257. A Dandelion Tankard & 1 tumbler
- 300 258. M Poppy Show Vase
- 155 259. M Heavy Grape Chop Plate
- 65 260. B Fruits & Flowers Bon Bon
- 400 261. A Peacocks Plate
- 400 262. G Cambridge Cologne w stopper
- 300 263. G Buzz Saw Cruet (small size) w stopper
- 400 264. AO Dandelion Mug
- 400 265. M Wild Rose Syrup - 500

- 225 266. G Nesting Swan Bowl
- 65 267. A Nesting Swan Bowl, Radium, slight damage
- 125 268. P G & C Sweet Meat
- 75 269. M Orange Tree Plate †
- 105 270. PO Fishnet Epergne
- 55 271. M Pine Cone 6" Plate
- 30 272. BA Triads hatpin
- 85 273. BA Dimples and Brilliants Hatpin
- 30 274. BA Six Plums hatpin
- 55 275. BA Butler's Mirror hatpin
- 165 **276. BA Belle hatpin, Super hard to find**
- 55 277. BA Beaded 1.5" hatpin, unlisted *Bust & Beads*
- 85 278. Purple Ripple Vase 8" *returned*
- 40 279. M Morning Glory 9" JIP Vase
- 205 **280. A Six Petals - Electric** †
- 155 **281. W Cosmos & Cane, master & 4 small berry bowls**
- 115 282. M Brooklyn Bridge
- 65 283. A Holly Sprig (Millersburg) bowl
- 283 *Feathered Lupine A. bowl*

- The following are ICGA souvenirs and whimsies
- _____ 284. 1968 Calendar Plate - Springfield, Il
 - 25 285. 1969 Iridescent Bottle - St. Louis, Mo
 - 10 286. 1970 4.75" bowl - Milwaukee, WI
 - 10 287. 1971 Paper Weight - Louisville, Ky
 - _____ 288. 1972 9" plate - Rochester, NY
 - 10 289. 1973 9" plate - Columbus, Oh
 - 10 290. 1975 9" plate - Allentown, Pa
 - 40 291. 1977 Miniature Amberina Town Pump - Atalanta, Ga
 - 40 292. 1978 Miniature IG Town Pump - Ft. Mitchell, Ky
 - 40 293. 1979 Miniature Amethyst Town Pump - St. Louis
 - 55 294. 1983 Vaseline Opal Frolicking Bears Cuspidor - St. Louis
 - 65 295. 1983 Vaseline/Marigold Opal Frolicking Bears Cuspidor
 - 105 296. 1984 B Lions whimsey Plate - Ft. Mitchell, Ky
 - 20 297. 1985 G Peacock miniature water set, Cedar Rapids, Ia
 - _____ 298. 1986 Green Opal Poppy Rosebowl - Indianapolis, In
 - 50 299. 1987 G 6" pitcher, enameled & signed - St. Louis, Mo
 - 55 300. 1989 Blue decorated whimsey Thumbprint vase - Elkhart, In
 - 50 301. 1989 Blue whimsey Thumbprint vase - Elkhart, In
 - 25 302. 1992 Green Lions plate - Minneapolis, Mn
 - 65 303. 1993 M Frolicking Bears Tumbler - Indianapolis, In
 - _____ 304. 1994 Red JIP Vase - Schaumburg, Il
 - _____ 305. 1996 Green G & C plate - Lansing, Mi
 - _____ 306. 1997 Amethyst Opal Frolicking Bears, hand painted whimsey - Dayton, Oh

The following are additions to the auction brochure:

- _____ 307. M Imperial Flute Punch Bowl & Base
- _____ 308. M Open Edge Basket - Square
- _____ 309. A Cobblestone Bowl
- _____ 310. M Pipe Novelty
- _____ 311. PO Rain Drops Bowl
- _____ 312. Imperial Jewels RED Compote
- _____ 313. Imperial Jewels RED Sauce
- _____ 314. M Vinyard Pitcher & Tumbler
- _____ 315. CLAMBROTH Lustre Rose Pitcher & Tumbler
- _____ 316. A 5" Vintage Bowls (3) one money
- _____ 317. M Fashion Tumbler
- _____ 317. Blue Greek Key Plate
- _____ 318. A Strawberry Bowl
- _____ 319. A Peacock at the Fountain Orange Bowl (point chip)
- _____ 320. A Three Fruits PCE Bowl
- _____ 321. M Vintage 10" Bowl, 3 in 1 edge
- _____ 322. M Peacock at the Fountain Pitcher & tumbler
- _____ 323. PO Fanciful Low Bowl
- _____ 324. M Wishbone ftd Bowl
- _____ 325. M Poinsettia Milk Pitcher
- _____ 326. M Stippled Rays Plate
- _____ 327. RED Stippled Rays Plate
- _____ 328. 1995 ICGA Celeste Blue Plate
- _____ 329. M Floral & Grape Pitcher & tumbler
- _____ 330. M White Oak Tumbler, base chip
- _____ 331. M Robin Mug
- _____ 332. M Witch's Pot
- _____ 333. Poppy Vase in Amethyst, wow!(Fenton)
- _____ 3334. Red Poppy Vase, Ruffled Top (Fenton)
- _____ 335. Rose Opal Poppy Vase, Ruffled top with CRE (Fenton)
- _____ 336. Smoke 9" Plate????
- _____ 337. ICE BLUE Grape & Cable Pin Tray
- _____ 338. PO Four Flowers 5" Ruffled Sauce
- _____ 339. Yellowish Pair of Candle Holders
- _____ 340. M Horse Medallion Collar Base Ruffled Bowl
- _____ 341. Amber Lustre Rose Creamer
- _____ 342. G Whirling Leaves TRI CORNER Bowl
- _____ 343. Cordial Set from Argentina
- _____ 345. A Dahlia Tumbler
- _____ 346 BLUE Tigerlilly Tumbler (Riihimaki) w/tag
- _____ 347. G Paneted Dandelion Tumblers(2) —
- _____ 348. M Lattice & Daisy Tankard & Tumbler
- _____ 349. M Raspberry Pitcher & Tumbler
- _____ 350. W Beaded Basket
- _____ 351. M Octagon Wine
- _____ 352. Blue Heavy Grape Master Berry, looks like smoke

