



# BURNS

AUCTION SERVICE

## 2002 A.C.G.A. Convention Auction

*The Woody Funk Collection*



**10:00 am, Friday, June 28, 2002**

(previews: Thursday 8 - 11 pm; Friday 8:00 am)

*at the*

**Marriott Hotel - Northwest**

**5605 Paul G. Blazer Memorial Parkway**

**Dublin, Ohio 43017**

*(Columbus suburb; Exit 15 off I-270 Bypass)*



**Reservations: (614) 791-1000**

Licensed and Bonded by the Department of Commerce in favor of the State of Ohio



With a little bit of a heavy heart, we are pleased to bring you this year's A.C.G.A. Convention Auction - a selection of the Woody and Marlene Funk collection from Pennsylvania. A whole bunch of us knew Woody as one of the nicest people and one who liked the nicest glass. He put together one of the best collections in the country. He passed away this spring and although plans for this auction were made in case something happened to him, I had hoped he would be here to see it sold. Well, he will surely be there in spirit and Marlene will also be there of course. The only ones missing so far are you guys, so to be sure to attend this year's A.C.G.A. Convention Auction and see some of the better items to be sold here in years.

This year the Marriott Hotel-northwest in Dublin, Ohio (suburb of Columbus) will host the convention. For reservations call hotel direct at 614-791-1000 and for Convention information call Stacey Wills at (614) 877-0286 or 1-800-432-6274.

Mail, phone, fax, etc. bids due by Wednesday, June 26th, 2002.

### Burns Auction Service

Tom Burns  
P.O. Box 608  
Bath, New York 14810  
(607) 776-7942 Cell: 731-9302

Bill Richards  
44 Water Street, Poland OH 44514  
(330) 757-2001  
FAX (330) 757-4917

Bill Richards III  
2253 Country Lane  
Poland, OH 44514  
(330) 755-2620

#### Mail Bids honored under the following conditions:

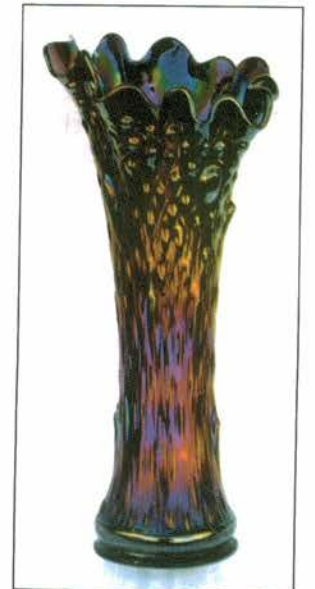
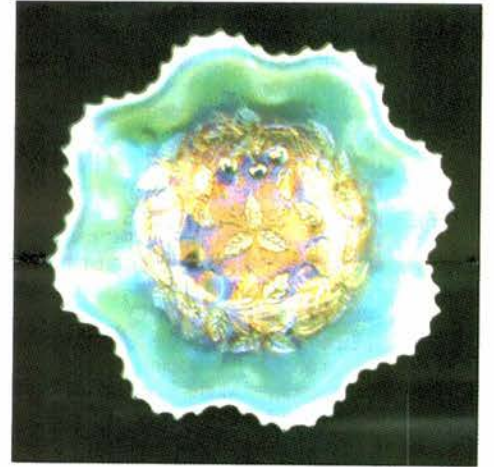
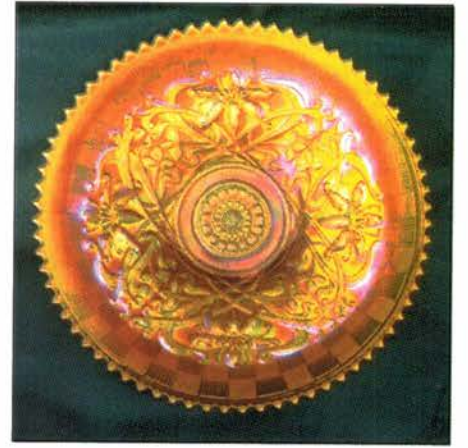
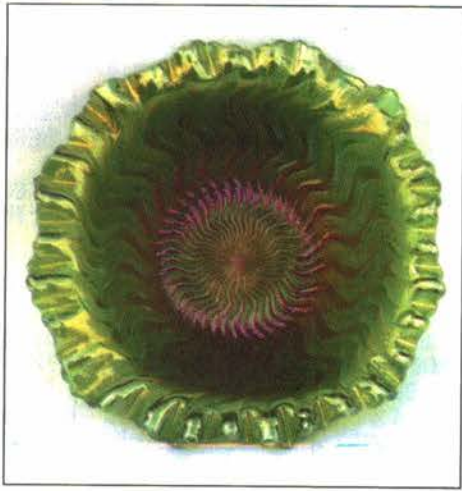
1. No deposit required. Bidders will take full responsibility to honor any and all bids we execute for them. Payment in full plus postage and handling required after notification and before we ship any item to them.
2. Items are bid on in perfect condition with average or above average iridescence OR as listed in the brochures. Bids will not be carried out when damage on an item has been found during the auction. **PEOPLE PRESENT AT THE AUCTION ARE RESPONSIBLE FOR FINDING ANY PINHEADS, WEAR, SPOTTINESS, MANUFACTURER'S DEFECTS OR ANY OTHER MINOR FLAWS, ETC.**
3. Successful bidders will be notified by collect call from the auctioneer **SO BE SURE TO INCLUDE PHONE NUMBER.**
4. Phone inquiries about the glass or any other questions are welcome.
5. If you have some other person at the auction bidding for you, they must pay for the item before taking it.
6. Any terms or conditions given the day of the auction will supersede any previously published information.
7. Mail, e-mail, fax and phone bids are due by Wednesday, June 26, 2002.

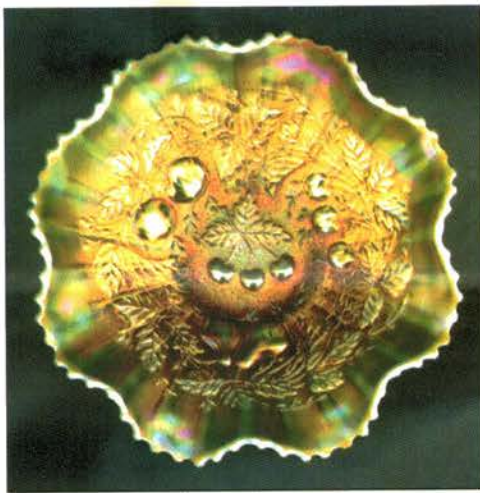
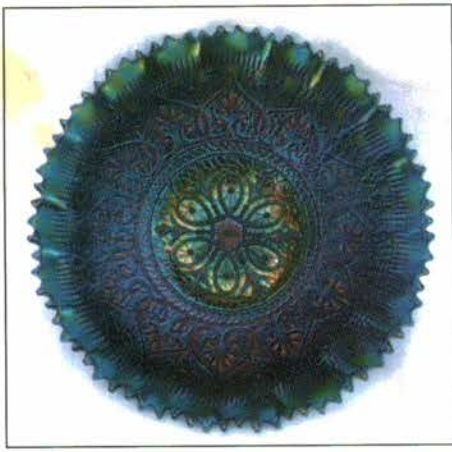
Visit our website at: <http://www.woodsland.com/burnsauction/>

- |        |   |       |  |
|--------|---|-------|--|
| 125    | 1. Beaded Purse - Dark (all 5 of these items are different and nice)  | 450   | 27. 7 1/2" M'BURG LITTLE STARS BOWL WITH 3 IN 1 EDGE - GREEN (RARE TO FIND IN THIS SHAPE; SATINY)              |
| 115    | 2. Beaded Purse - Dark  |       |  |
| 95     | 3. Beaded Purse - Dark  | 235   | 28. 7 3/4" M'burg Little Stars 6 Ruffled Bowl - Amy. (scarce; satiny)  |
| 125    | 4. Beaded Purse - Dark  | 165   | 29. 7 1/2" M'burg Little Stars 6 Ruffled Bowl - Mari. (scarce; satiny)   |
| 115    | 5. Beaded Purse - Dark  | 1,000 | 30. N RASPBERRY HANDLED WATER PITCHER - BLUE (EXTREMELY RARE COLOR FOR THIS ITEM; PERFECT AND NICE)            |
| 450    | 6. FENTON ORANGE TREE COVERED POWDER JAR - GREEN (VERY RARE COLOR FOR THIS PATTERN; SUPER)  |       |  |
| 225    | 7. FENTON ORANGE TREE COVERED POWDER JAR - AMY. (ANOTHER RARE COLOR FOR THIS ITEM; NICE)  | 950   | 31. N RASPBERRY TUMBLER - BLUE (EXTREMELY RARE ITEM IN THIS COLOR)   |
| 90     | 8. Fenton Orange Tree Covered Powder Jar - Blue (scarce; nice)  | 2700  | 32. N LEAF AND BEADS FTD. ROSE BOWL - ICE GREEN OPAL. (EXTREMELY RARE AND DESIRABLE; GREAT COLOR AND OPAL.)    |
| 65     | 9. Fenton Orange Tree Covered Powder Jar - Dk. Mari. (super color)  | 850   | 33. N LEAF AND BEADS FTD. ROSE BOWL - ICE GREEN (VERY RARE ITEM IN THIS COLOR; NICE)                           |
| 16,000 | 10. M'BURG MORNING GLORY TANKARD WATER PITCHER - MARI. (EXTREMELY RARE - MAYBE 2 OTHERS KNOWN; HARDLY EVER SOLD)                  | 750   | 34. N LEAF AND BEADS FTD. ROSE BOWL - ICE BLUE (ANOTHER RARE ITEM WITH NICE COLOR AND IRID.)                   |
| 200    | 11. N ROUND HANDLED BUSHEL BASKET - ICE BLUE (VERY RARE COLOR; REALLY NICE) - 4000-700 chip                                       | 275   | 35. N LEAF AND BEADS FTD. ROSE BOWL - WHITE (VERY SCARCE WITH NICE IRID.)                                      |
| 450    | 12. N Round Bushel Basket - Smoke (rare color with great irid.) ✓   | 275   | 36. N LEAF AND BEADS FTD. ROSE BOWL - AQUA OPAL. (RARE AND DESIRABLE; AN EXCELLENT EXAMPLE)                    |
| 95     | 13. N Round Bushel Basket - Horehound (very scarce base color; nice) *  | 320   | 37. N Leaf and Beads ftd. Rose Bowl - Green (scarce; nice color and irid.)                                     |
| 125    | 14. N Round Bushel Basket - Mari. (nice color)  | 155   | 38. N Leaf and Beads ftd. Rose Bowl - Pur. (nice color and irid.)  |
| 3,750  | 15. N WISHBONE SINGLE LILY EPERGNE - ICE BLUE (EXTREMELY RARE ITEM; A REAL BEAUTY; SMALL FLAKE ON LILY INSERT)                    | 105   | 39. N Leaf and Beads ftd. Rose Bowl - Mari. (nice color and irid.)   |
| 950    | 16. N WISHBONE FTD. RUFFLED BOWL WITH RUFFLES AND RINGS EXT. - ICE GREEN (RARE AND DESIRABLE COLOR WITH SUPER IRID.)              | 5750  | 40. M'BURG PERFECTION HANDLED BULBOUS WATER PITCHER - DK. MARI. (EXTREMELY RARE COLOR FOR A RARE ITEM; SUPER!) |
| 65     | 17. N Wishbone ftd. Ruffled Bowl with Ruffles and Rings Ext. - Mari. (nice color)   | 925   | 41. M'BURG SUNFLOWER PIN TRAY - MARI. (RARE COLOR FOR THIS ITEM; NICE) ✓                                       |
| 4000   | 18. 10 - 11" N WISHBONE CHOP PLATE WITH BASKETWEAVE EXT. - DK. MARI. (ABSOLUTELY SUPER COLOR AND IRID. - THE BEST!)               | 550   | 42. M'BURG SUNFLOWER PIN TRAY - GREEN (RARE AND DESIRABLE; NICE COLOR AND IRID.)                               |
| 75     | 19. Fenton Plaid 8 Ruffled Bowl - Mari. (nice color)  | 500   | 43. M'BURG SUNFLOWER PIN TRAY - AMY. (RARE AND DESIRABLE; NICE COLOR AND IRID.)                                |
| 3,900  | 20. FENTON BUTTERFLY AND BERRY TRI-CORNERED FTD. WHIMSEY FROM IND. BERRY BOWL - BLUE (THE CUTEST WHIMSEY YOU'LL EVER FIND - WOW!) | 1100  | 44. M'BURG SEACOAST PIN TRAY - MARI. (RARE COLOR FOR THIS ITEM; NICE)  |
| 225    | 21. FENTON PANTHER FTD. ROUND SAUCE WITH B & B EXT. - GREEN (RARE COLOR; NICE)  | 550   | 45. M'BURG SEACOAST PIN TRAY - AMY. (RARE AND DESIRABLE; NICE ITEM)  |
| 225    | 22. FENTON PANTHER FTD. ROUND SAUCE WITH B & B EXT. - AMY. (ANOTHER RARE COLOR; NICE)   | 2300  | 46. PAIR IMPERIAL SIX SIDED CANDLESTICKS - PUR. (EXTREMELY RARE AND WELL MATCHED PAIR)                         |
| 105    | 23. Fenton Panther ftd. Round Sauce with B & B Ext. - Blue (nice color and irid.)   | 750   | 47. PAIR IMPERIAL SIX SIDED CANDLESTICKS - MARI. (ANOTHER WELL MATCHED PAIR; NICE)                             |
| 125    | 24. Fenton Panther ftd. Ruffled Master Berry Bowl - Mari. (nice color)  | 275   | 48. 8 1/2 - 9" Fenton Coral Bowl - Green (very scarce color with great irid.; tiny chip)                       |
| 300    | 25. FENTON PANTHER FTD. RUFFLED MASTER BERRY BOWL - BLUE (VERY SCARCE COLOR; REALLY NICE)   | 215   | 49. 8 1/2 - 9" Fenton Coral Bowl - Mari. (scarce color with nice irid.)  |
| 150    | 26. European Rising Sun Handled Water Pitcher - Mari. (scarce item with nice color) <i>have pedestal based one</i>                |       |  |

- 13,000 50. N WISTERIA TANKARD WATER PITCHER - ICE BLUE (EXTREMELY RARE AND DESIRABLE; ONE OF MY FAVORITE ITEMS - SUPER)
- 600 51. N WISTERIA TUMBLER - ICE BLUE (RARE AND REALLY NICE)
- 175 52. Fenton Cherry Circles Handled Bon Bon - Green (rare color for this item with great irid.)
- 25 53. Fenton Cherry Circles Handled Bon Bon - Blue (nice color; small chip)
- 100 54. Fenton Persian Medallion Stemmed Ruffled Compote - Green (very scarce base color)
- 1500 55. IMPERIAL LUSTRE ROSE 4 PC. TABLE SET - PUR. (VERY RARE SET WITH GREAT IRID.; NICE)
- 800 56. N DRAPERY SWUNG VASE - AQUA OPAL. (RARE COLOR FOR THIS PATTERN; NICE OPAL.)
- 300 57. N Drapery Swung Vase - Ice Green (very scarce with nice irid.)
- 250 58. N Drapery Swung Vase - Blue (very scarce color for this item; nice)
- 185 59. N Drapery Variant Swung Vase - Blue (rare and desirable; really nice)
- 850 60. N DRAPERY ROSE BOWL - ICE BLUE (RARE COLOR NOT OFTEN FOUND; NICE)
- 550 61. FENTON FLUFFY PEACOCK HANDLED WATER PITCHER - GREEN (RARE AND DESIRABLE; GREAT IRID.)
- 10 62. Fenton Fluffy Peacock Tumbler - Green (cracked; scarce)
- 450 63. FENTON FLUFFY PEACOCK HANDLED WATER PITCHER - AMY. (RARE AND DESIRABLE; REALLY NICE IRID.)
- 60x2 45x2 4200 64. (4) Fenton Fluffy Peacock Tumblers - Amy. (nice examples; selling choice)
- 4200 65. DUGAN BUTTERFLY AND TULIP LG. SQUARE FTD. BOWL WITH INVERTED FAN AND FEATHER EXT. - PUR. (RARE AND DESIRABLE; GREAT COLOR AND IRID.)
- 325 66. N DAISY AND PLUME FTD. RUFFLED CANDY DISH WITH BERRY INT. - ICE GREEN (RARE COLOR AND VERY DESIRABLE)
- 325 67. N DAISY AND PLUME FTD. RUFFLED CANDY DISH WITH BERRY INT. - ICE BLUE (ANOTHER RARE ITEM WITH GREAT COLOR)
- 80 68. Fenton Orange Tree Handled Mug - Aqua (rare base color)
- 172 69. Fenton Orange Tree Handled Mug - Mari.
- 6000 70. M'BURG DIAMONDS PUNCH BOWL AND BASE - AMY. (EXTREMELY RARE ITEM IN ANY COLOR; MAY HAVE A COUPLE SMALL CHIPS)
- 2 10 91. N EMBROIDERED MUMS BOWL WITH PIE CRUST EDGE AND RIBBED EXT. - AQUA (RARE AND VERY DESIRABLE; VERY NICE)
- 235 72. N EMBROIDERED MUMS 8 RUFFLED BOWL WITH RIBBED EXT. - OPAQUE LIME GREEN OPAL. (EXTREMELY RARE COLOR COMBINATION; REALLY NICE)
- 650 73. N Embroidered Mums 8 Ruffled Bowl with Ribbed Ext. - Blue (very scarce and very desirable)
- 265 74. N Embroidered Mums 8 Ruffled Bowl with Ribbed Ext. - Mari. (very scarce and nice)
- 7750 75. CAMBRIDGE INVERTED FEATHER TANKARD WATER PITCHER - DK. MARI. (EXTREMELY RARE ITEM - SUPER COLOR AND IRID.; SMALL CHIP ON HANDLE)
- 195 76. Cambridge Inverted Strawberry Covered Powder Jar - Green (very scarce; small chip on lid)
- 255 77. CAMBRIDGE INVERTED STRAWBERRY COVERED POWDER JAR - DK. MARI. (VERY SCARCE; NICE COLOR AND IRID.)
- 75 78. Fenton Heart and Vine Bowl with 3 in 1 Edge - Green (nice color)
- 20 79. Fenton Heart and Vine Bowl with 3 in 1 Edge - Mari. (nice color; small chip)
- 1600 80. N THREE FRUITS STIPPLED RUFFLED BOWL WITH RIBBED EXT. - AQUA OPAL. (RARE AND VERY DESIRABLE; NICE COLOR AND IRID.)
- 350 81. N THREE FRUITS STIPPLED RUFFLED BOWL WITH RIBBED EXT. - WHITE (RARE AND DESIRABLE; NICE COLOR AND IRID.)
- 325 82. N Three Fruits Stippled Plate with Ribbed Ext. - Mari. (very scarce with nice color and irid.)
- 450 83. N Three Fruits Bowl with Pie Crust Edge and Basketweave Ext. - Amy. (nice color and irid.)
- 350 84. N Three Fruits Bowl with Pie Crust Edge and Basketweave Ext. - Mari. (nice color)
- 900 85. N THREE FRUITS MEDALLION STIPPLED RUFFLED FTD. BOWL WITH MEANDER EXT. - AQUA OPAL. (VERY SCARCE AND DESIRABLE; GREAT OPAL.)
- 400 86. N FRUITS AND FLOWERS STEMMED HANDLED BON BON - AQUA OPAL. (RARE AND DESIRABLE; NICE OPAL. AND IRID.)
- 500 87. N FRUITS AND FLOWERS STEMMED HANDLED BON BON - ICE GREEN (RARE AND DESIRABLE; REALLY NICE IRID.)
- 375 88. Dugan Round Up Flat Plate - Blue (very scarce; nice irid.)
- 300 89. Dugan Windflower Flat Plate - Blue (scarce; nice satiny finish)
- 1800 90. FENTON AUTUMN ACORN BOWL - PERSIAN BLUE / MARI. (RARE AND DESIRABLE COLOR - SUPER TOUGH)
- 125 91. Fenton Autumn Acorn Ruffled Bowl - Green (nice irid.)
- 650 92. 7 1/2" FENTON ACORN LOW RUFFLED BOWL - RED (RARE AND HAS NICE COLOR AND IRID.)
- 105 93. 7 1/2" Fenton Acorn Low Ruffled Bowl - Green (scarce color)
- 185 94. 7 1/2" Fenton Acorn Low Ruffled Bowl - Vaseline / Mari. (scarce color)
- 3500 95. N STIPPLED G & C BOWL WITH PIE CRUST EDGE AND RIBBED EXT. - AQUA OPAL. (RARE AND VERY DESIRABLE; NICE EXAMPLE)
- 1000 96. N STIPPLED G & C 8 RUFFLED BOWL WITH PIE CRUST EDGE AND RIBBED EXT. - ICE BLUE (RARE AND DESIRABLE; NICE IRID.)
- 2050 97. N STIPPLED G & C 8 RUFFLED BOWL WITH RIBBED EXT. - ICE GREEN (RARE AND DESIRABLE; NICE IRID. AND BASE COLOR)
- 850 98. N G & C VARIANT BOWL WITH PIE CRUST EDGE AND PLAIN EXT. - LAVENDER (RARE BASE COLOR WITH SUPER IRID.)
- 25 99. Dugan Vineyard Bulbous Water Pitcher - Mari.
- 16,000 100. 14 3/4" TALL X 4 3/4" BASE N TREE TRUNK MID-SIZE SWUNG VASE - CUSTARD / MARI. (EXTREMELY RARE AND VERY DESIRABLE; GREAT IRID. ON A LUNA BASE GLASS)
- 4500 101. 13" TALL X 3 3/4" BASE N TREE TRUNK MID-SIZE SWUNG VASE WITH PLUNGER BASE - EMERALD GREEN (VERY RARE AND EXTREMELY DESIRABLE; SUPER BRIGHT IRID. IN A RARE SHAPE AND SIZE)
- 1100 102. 13 1/2" TALL X 4 3/4" BASE N TREE TRUNK MID-SIZE SWUNG VASE - ELEC. BLUE (RARE AND VERY DESIRABLE; REALLY NICE)
- 350 103. 14" TALL X 4 3/4" BASE N TREE TRUNK MID-SIZE SWUNG VASE - AMY. WITH SWIRL EFFECT (RARE COLOR VARIATION; ODD BASE GLASS; NICE IRID.)
- 700 104. 12 1/4" Tall x 4 3/4" Base N Tree Trunk Mid-size Swung Vase - Pur. (scarce and nice; blister on edge)
- 1500 105. 19" TALL X 5 1/4" BASE N TREE TRUNK LG. SWUNG FUNERAL VASE - PUR. (RARE AND VERY DESIRABLE; NICE COLOR, IRID., AND SIZE)
- 375 106. N TREE TRUNK STANDARD SWUNG VASE - ICE GREEN (RARE AND DESIRABLE; NICE COLOR AND IRID.)
- 95 107. N Tree Trunk Standard Swung Vase - Green (nice color and irid.)
- 50 108. N Tree Trunk Squatty Swung Vase - Green (scarce size; nice)
- 110 109. N Tree Trunk Squatty Swung Vase - Amy. (scarce size; nice)
- 185 110. N Tree Trunk Squatty Swung Vase - Mari. (scarce size)
- 1000 111. N STRAWBERRY STIPPLED RUFFLED BOWL WITH RIBBED EXT. - LIME ICE GREEN (RARE; GREAT COLOR WITH REALLY NICE IRID.)
- 750 112. N STRAWBERRY STIPPLED BOWL WITH PIE CRUST EDGE AND BASKETWEAVE EXT. - GREEN (RARE; TOUGH ITEM TO FIND; NICE IRID.)
- 550 113. N STRAWBERRY STIPPLED BOWL WITH PIE CRUST EDGE AND RIBBED EXT. - PUR. (RARE AND NICE; VERY NICE IRID.)
- 1500 114. N STRAWBERRY BOWL WITH PIE CRUST EDGE AND RIBBED EXT. - RADIUM MARI. (ABSOLUTELY SUPER RADIUM IRID. - WOW!)
- 4000 115. FENTON STRAWBERRY SCROLL BULBOUS HANDLED WATER PITCHER - MARI. (EXTREMELY RARE; GREAT COLOR - ONE OF MY FAVORITES)
- 375 116. 7 1/2" FENTON PINE CONE FLAT PLATE - AMBER (RARE BASE COLOR IN THIS SIZE; NICE IRID.)
- 205 117. 6 1/4" Fenton Pine Cone Flat Plate - Green (scarce; nice color and irid.)
- 205 118. 6 1/4" Fenton Pine Cone Flat Plate - Blue (nice color and irid.)
- 175 119. Imperial Open Rose Flat Plate - Amber (very scarce; nice base color and irid.)
- 1600 120. FENTON ORANGE TREE SCROLL 7 PC. TANKARD WATER SET - BLUE (VERY RARE SET TO FIND COMPLETE - REALLY NICE)
- 35 121. N Raspberry Handled Milk Pitcher - Green (scarce with nice color and irid.)
- 265 122. N Raspberry Handled Milk Pitcher - Amy. (another example with nice color and irid.)
- 350 123. IMPERIAL CORN BOTTLE - DK. MARI. (VERY SCARCE WITH EXCELLENT IRID.)
- 325 124. Dugan Amaryllis Small Compote - Mari. (very scarce color for this item; nice)
- 1700 125. FENTON STAG AND HOLLY GIANT FTD. ROSE BOWL - BLUE (RARE AND REALLY TOUGH TO FIND; SUPER EXAMPLE)
- 115 126. 10" Fenton Stag and Holly lg. ftd. Bowl - Mari. (nice color and irid.)

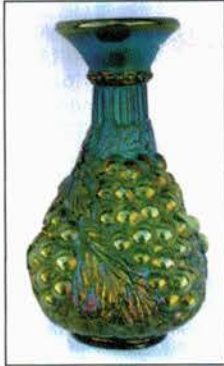
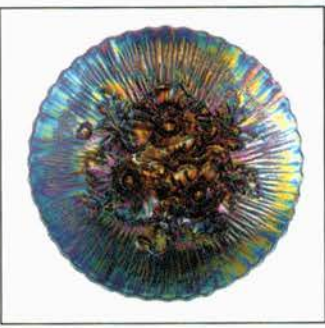
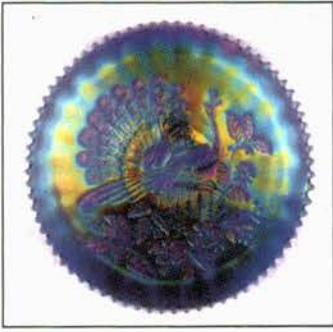
1CS





- 75 127. 6" Imperial Diamond Ring Ruffled Sauce - Pur. (scarce color; super irid.)
- 65 128. 9 1/2 - 10" Fenton Vintage Grape Lg. Ice Cream Shaped Bowl - Blue (nice color; impressive size)
- 195 129. Fenton Concord Grape 6 Ruffled Bowl - Mari. (scarce with really nice color and irid.)
- 2000 130. **IMPERIAL GRAPE WATER CARAFE - EMERALD GREEN (VERY RARE AND EXTREMELY DESIRABLE; SUPER COLOR AND IRID.)**
- 255 131. **IMPERIAL GRAPE WATER CARAFE - MARI. (VERY SCARCE COLOR FOR THIS ITEM; REALLY NICE)**
- 200 132. **N BEADED CABLE FTD. RUFFLED ROSE BOWL - ICE BLUE OPAL. (RARE; HAS ODD BASE TINT AND NICE OPAL.) \***
- 210 133. **N BEADED CABLE FTD. RUFFLED ROSE BOWL - AQUA OPAL. (RARE AND DESIRABLE WITH NICE OPAL. AND IRID.) \***
- 55 134. N Beaded Cable ftd. Ruffled Rose Bowl - Mari. (nice color and irid.)
- 3800 135. **M'BURG MULTI-FRUITS AND FLOWERS 8 PC. TULIP TOP PUNCH SET - MARI. (RARE SET IN A RARE SHAPE; REALLY TOUGH TO FIND; SATINY AND NICE)**
- 1050 136. 9 1/2" FENTON HOLLY FLAT PLATE - GREEN (RARE COLOR WITH A NICE SATINY FINISH)
- 450 137. 9 3/4" FENTON HOLLY FLAT PLATE - AMY. (ANOTHER RARE COLOR FOR THIS ITEM; NICE)
- 650 138. 6 1/2" FENTON SAILBOAT FLAT PLATE WITH ORANGE TREE EXT. - BLUE (RARE AND VERY DESIRABLE; GREAT COLOR AND DETAIL)
- 225 139. 6 1/2" Fenton Sailboat Flat Plate with Orange Tree Ext. - Mari. (scarce; nice color and detail)
- 1609 140. **M'BURG MARYLIN HANDLED WATER PITCHER - GREEN (RARE ITEM; NICE COLOR AND IRID.)**
- 385 141. M'burg Marilyn Tumbler - Green (scarce; nice color and irid.)
- 35 142. **M'BURG MARYLIN HANDLED WATER PITCHER - AMY. (RARE ITEM; NICE COLOR AND SATINY IRID.) \***
- 195 143. 6 1/2" Dugan Petal and Fan Plate with Crimped Edge and Jeweled Heart Ext. - Amy. (very scarce with excellent color and irid.)
- 175 144. 6 1/2" Dugan Cherries Plate with Crimped Edge and Jeweled Heart Ext. - Amy. (another scarce item with really nice color)
- 3100 145. **9 1/2" N GREEK KEY PLATE WITH NARROW BASE AND RIBBED EXT. - BLUE (VERY RARE AND DESIRABLE; HAS BRIGHT BLUE AND RED IRID.)**
- 1000 146. **9 - 9 1/2" N GOOD LUCK PLATE WITH BASKETWEAVE EXT. - HOREHOUND (RARE AND DESIRABLE BASE COLOR; NICE IRID.)**
- 700 147. 9 - 9 1/2" N Good Luck Plate with Ribbed Ext. - Green (rare item with nice color; has small chip)
- 1200 148. **9" N GOOD LUCK RUFFLED BOWL WITH RIBBED EXT. - SAPPHIRE (VERY RARE AND DESIRABLE; REALLY NICE EXAMPLE)**
- 275 149. **DUGAN PASTEL SWAN MASTER SALT - P. OPAL. (RARE ITEM WITH NICE OPAL.)**
- 1000 150. **N DANDELION TANKARD WATER PITCHER - HOREHOUND (VERY RARE BASE COLOR FOR THIS ITEM; HAVEN'T SEEN MANY AT ALL AND THIS ONE IS NICE!)**
- 325 151. N Dandelion Tankard Water Pitcher - Mari. (very scarce with nice color and irid.)
- 525 152. **N DANDELION HANDLED MUG - GREEN (RARE BASE COLOR WITH MULTI-COLORED IRID.)**
- 50 153. Fenton Persian Medallion Rose Bowl - Mari. (nice color and irid.)
- 55 154. 5 - 6" Imperial Windmill Ind. Sauce - Pur. (super color and irid.)
- 1750 155. **N THIN RIB MID-SIZE SWUNG VASE - AQUA OPAL. (VERY RARE AND EXTREMELY DESIRABLE; GREAT COLOR AND OPAL.)**
- 165 156. N Thin Rib Standard Swung Vase - Ice Blue (scarce and very desirable with nice irid.)
- 115 157. N Thin Rib Squatty Swung Vase - Blue (scarce and desirable size and color) \*
- 40 158. N Fine Rib Squatty Swung Vase - Mari. (satiny irid.)
- 135 159. N Thin Rib Jack in the Pulpit Vase - Green (scarce shape; nice satiny irid.)
- 750 160. **N LATTICE AND POINSETTIA FTD. RUFFLED BOWL WITH RIBBED EXT. - BLUE (RARE AND VERY DESIRABLE; HAS BRIGHT RED AND BLUE IRID.)**
- 600 161. **N HEARTS AND FLOWERS BOWL WITH PIE CRUST EDGE AND RIBBED EXT. - ICE BLUE (RARE SHAPE AND VERY DESIRABLE WITH NICE IRID.)**
- 2500 162. **N HEARTS AND FLOWERS BOWL WITH PIE CRUST EDGE AND RIBBED EXT. - ELEC. BLUE (VERY DESIRABLE ITEM WITH BRIGHT BLUE IRID.)**
- 250 163. **N HEARTS AND FLOWERS RUFFLED BOWL WITH RIBBED EXT. - MARI. (VERY SCARCE; GREAT COLOR AND IRID.)**
- 345 164. N Hearts and Flowers Ruffled Bowl with Ribbed Ext. - Ice Blue (scarce with nice color and irid.)
- 1500 165. **N GREEK KEY TANKARD WATER PITCHER - GREEN (RARE AND DESIRABLE; REALLY NICE COLOR AND IRID.)**
- 40 166. N Greek Key Tumbler - Green (scarce with nice color and irid.)
- 170 167. N Singing Bird Tumbler - Green (super example)
- 550 168. **DUGAN RAMBLER ROSE BULBOUS WATER PITCHER - AMY. (VERY SCARCE COLOR FOR THIS SCARCE PATTERN)**
- 40, 35 169. (2) Dugan Rambler Rose Tumblers - Amy. (nice examples - selling choice)
- 600 170. **N G & C TANKARD WATER PITCHER - GREEN (VERY RARE ITEM IN THIS COLOR; A SUPER ITEM THAT HAS A SMALL CHIP)**
- 25 171. N G & C Tankard Tumbler - Green (very scarce size and color; really nice) \*
- 65 172. 6" Dugan Ski Star Ruffled Sauce with Compass Ext. - Pur. (scarce size and color; nice)
- 55 173. 6" Dugan Ski Star Ruffled Sauce with Compass Ext. - P. Opal. (nice opal. and irid.)
- 25 174. 10" Fenton Lotus and Poinsettia ftd. Bowl - Mari. (nice color and irid.)
- 1300 175. **M'BURG HANGING CHERRIES HANDLED MILK PITCHER - GREEN (VERY RARE ITEM IN ANY COLOR; NICE AND SATINY)**
- 1000 176. **M'BURG HANGING CHERRIES HANDLED MILK PITCHER - AMY. (VERY RARE ITEM IN ANY COLOR; NICE AND SATINY)**
- 245 177. M'burg Hanging Cherries Tumbler - Amy. (scarce with nice color and irid.) - 100 - 200
- 165 178. **N Star of David and Doves domed Ruffled Bowl - Pur. (nice color and irid.)**
- 65 179. Imperial Windmill Handled Milk Pitcher - Mari. (really nice color and irid.)
- 900 180. **13" TALL X 5" BASE X 10 1/2" FLARE IMPERIAL MORNING GLORY SWUNG FUNERAL VASE - PUR. (WHAT AN ITEM! GREAT COLOR, SIZE AND FLARE)**
- 250 181. 14" Tall x 5" Base x 8 1/2" Flare Imperial Morning Glory Swung \* Funeral Vase - Mari. (very scarce and nice with bright color and irid.)
- 340 182. Imperial Jewels Rose Bowl, Signed with Iron Cross - Pur. (attractive item; nice) \*
- 70 183. 9" Dugan Single Flower Ruffled Bowl with Enam. Floral Decor - P. Opal. (scarce with nice enam. decoration)
- 100 184. 9 1/2" Fenton Ribbon Tie Low Plate with 3 in 1 Edge - Amy. (very scarce base color with nice irid.)
- 1900 185. **10 - 10 1/2" IMPERIAL HATTIE FLAT CHOP PLATE - DK. MARI. (RARE AND VERY DESIRABLE; NICE COLOR AND IRID.)**
- 165 186. Imperial Beaded Bullseye Swung Vase - Pur. (scarce with super irid.)
- 725 187. **IMPERIAL PARLOR PANELS RUFFLED SQUATTY VASE - SMOKE (RARE ITEM IN A RARE SIZE AND COLOR; SUPER)**
- 125 188. 9" Fenton Ten Mums Bowl with Candy Ribbon Edge - Green (scarce item; really nice color)
- 50 189. 7 1/2" Fenton Peacock Tails Ruffled Bowl - Blue (satiny)
- 1150 190. **9 - 9 1/2" FENTON DRAGON AND LOTUS 8 RUFFLED BOWL - AQUA OPAL. (VERY RARE AND VERY DESIRABLE; OPAL. ON EDGE)**
- 525 191. **8 1/2 - 9" FENTON DRAGON AND LOTUS 8 RUFFLED BOWL - ICE GREEN OPAL. (RARE AND VERY DESIRABLE; ATTRACTIVE AND NICE)**
- 150 192. 9" Fenton Dragon and Lotus 8 Ruffled Bowl - Amy. (scarce base color with nice irid.)
- 145 193. 8" Fenton Dragon and Lotus Ice Cream Shaped Spatula ftd. Bowl - Blue (scarce with really nice irid.)
- 1650 194. **10 1/2" FENTON TWO FLOWERS BALL FTD. ICE CREAM SHAPED BOWL - SMOKEY BLUE (ODD COLOR COMBINATION WITH A BLuish BASE COLOR)**
- 1100 195. **M'BURG HOBNAIL SPITTOON - AMY. (RARE AND VERY DESIRABLE WITH GREAT IRID.)**
- 950 196. **M'BURG HOBNAIL SPITTOON - MARI. (RARE AND VERY DESIRABLE WITH NICE COLOR AND IRID.)**
- 275 197. **M'BURG HOBNAIL ROSE BOWL - AMY. (VERY SCARCE WITH REALLY NICE IRID.)**
- 360 198. M'burg Hanging Cherries Covered Butter Dish - Green (rare item; perfect with bright satiny irid.)
- 175 199. N Poppy Ruffled Relish Tray with Ribbed Ext. - Blue (scarce with nice color and irid.) \*
- 1800 200. **N PEACOCK AT THE FOUNTAIN FTD. RUFFLED FRUIT BOWL - RENNIGER BLUE (AN ABSOLUTELY RARE PIECE OF GLASS; GREAT BASE COLOR WITH NICE IRID.)**

- 1700 201. N PEACOCKS BOWL WITH PIE CRUST EDGE AND RIBBED EXT. - SMOKEY HONEY AMBER (RARE BASE COLOR WITH NICE HIGHLIGHTS)
- 1600 202. N PEACOCKS BOWL WITH PIE CRUST EDGE AND RIBBED EXT. - ICE GREEN (RARE AND DESIRABLE WITH EXCELLENT IRID.; NICE)
- 1100 203. N PEACOCKS BOWL WITH PIE CRUST EDGE AND RIBBED EXT. - ICE BLUE (RARE ITEM IN THIS SHAPE; NICE GOLD IRID.)
- 1000 204. N PEACOCKS RUFFLED BOWL WITH RIBBED EXT. - AQUA OPAL. (RARE AND ALWAYS DESIRABLE; GREAT COLOR AND OPAL.)
- 1900 205. N PEACOCKS FLARED PLATE WITH RIBBED EXT. - ELEC. BLUE (RARE AND VERY DESIRABLE; HAS SUPER BLUE HIGHLIGHTS)
- 900 206. N PEACOCKS FLARED PLATE WITH RIBBED EXT. - AMY. (A SUPER EXAMPLE; ALMOST PASTEL WITH EXCELLENT IRID.)
- 550 207. 9 1/2" FENTON PEACOCK AT THE URN FLAT PLATE - BLUE (VERY SCARCE AND DESIRABLE WITH MULTI-COLORED IRID.)
- 225 208. Fenton Peacock at the Urn Ruffled Bowl - Amy. (scarce color with a nice satiny finish)
- 55 209. 7 - 8" Fenton Peacock at the Urn Deep Round 'Nut' Bowl - Mari. (scarce shape with nice color and irid.) \*
- 2000 210. N G & C SMALL SIZE FTD. RUFFLED FRUIT BOWL - ICE GREEN (RARE, DESIRABLE AND A COLORFUL, IMPRESSIVE ITEM - REALLY NICE)
- 850 211. N G & C SMALL SIZE FTD. RUFFLED FRUIT BOWL - ICE BLUE \* (ANOTHER VERY DESIRABLE ITEM WITH GREAT PASTEL IRID.)
- 800 212. N G & C FTD. OVAL BANANA BOAT - ICE BLUE (VERY SCARCE AND DESIRABLE WITH EXCELLENT IRID.)
- 500 213. N G & C 2 PC. CANDLE LAMP - MARI. (RARE AND DESIRABLE; TOUGH TO FIND)
- 175 214. N G & C ORIENTAL POPPY TUMBLER - ICE GREEN (RARE COLOR TO FIND; NICE IRID.) \*
- 225 215. N HARVEST POPPY STEMMED RUFFLED COMPOTE - MARI. (VERY SCARCE ITEM WITH EXCELLENT IRID.)
- 450 216. N Blossomtime Stemmed Ruffled Compote - Green (very scarce pattern with nice irid.)
- 50 217. N Fern Interior / Daisy and Plume Exterior Stemmed Ruffled Compote - Green (scarce item with really nice irid.)
- 150 218. 10" Dugan Garden Path Variant Lg. Ice Cream Shaped Bowl - White (very scarce item in this shape; great irid.)
- 15 219. Dugan Paneled Cherries ftd. Ruffled Bowl - Pur. (super color and irid.)
- 100 220. FENTON ENAMELED IRIS / DIAGONAL BAND TANKARD WATER PITCHER - AMY. (RARE AND DESIRABLE; TOUGH IN THIS COLOR)
- 450 221. FENTON PRISM BAND / ENAMELED FORGET ME NOT 7 PC. TANKARD WATER PITCHER - MARI. (VERY DESIRABLE SET COMPLETE; NICE COLOR AND DECOR.)
- 300 222. FENTON ENAMELED DIANTHUS TANKARD WATER PITCHER - WHITE (VERY SCARCE - USUAL GREAT IRID. AND DECOR.)
- 85 223. Fenton Enameled Dianthus Tumbler - White (scarce and really nice)
- 200 224. Fenton Orange Tree Handled Loving Cup - White (very scarce color for this item; nice)
- 2400 225. 9 - 9 1/2" N POPPY SHOW FLARED PLATE - ELEC. BLUE (SUPER ITEM - VERY ATTRACTIVE WITH BLUE HIGHLIGHTS)
- 750 226. N POPPY SHOW FLARED PLATE - MARI. (RARE AND DESIRABLE; REALLY NICE IRID.)
- 1400 227. N POPPY SHOW RUFFLED BOWL - ICE BLUE (RARE AND DESIRABLE; NICE COLOR AND IRID.)
- 375 228. FENTON BUTTERFLY AND FERN BULBOUS WATER PITCHER - GREEN (VERY SCARCE ITEM WITH BRIGHT SATINY IRID.)
- 425 229. Fenton Butterfly and Fern Bulbous Water Pitcher - Amy. (another scarce and desirable item; nice)
- 450 230. 8" M'BURG STRAWBERRY WREATH 4 SIDED SQUARE BOWL - AMY. (RARE SHAPE WITH A GREAT RADIUM FINISH)
- 205 231. M'burg Holly Sprig Tri-Cornered Bowl - Amy. (another desirable item with a radium finish)
- 2400 232. 9 1/2" M'BURG PEACOCK LG. BOWL WITH 3 IN 1 EDGE - GREEN (SUPER DESIRABLE ITEM; RADIUM WITH A GREAT SHAPE)
- 165 233. 9 1/2" M'burg Rays and Ribbons Ruffled Bowl - Green (nice color and irid.)
- 700 234. M'BURG LEAF AND LITTLE FLOWERS MINIATURE COMPOTE - GREEN (RADIUM AND VERY DESIRABLE)
- 950 235. 8 1/2 - 9" M'BURG ZIG ZAG SQUARE CRIMPED EDGE BOWL - GREEN (RADIUM AND SUPER; GREAT COLOR AND BRIGHT IRID.)
- 35 236. N Diamond Point Swung Vase - White (scarce; nice color and irid.)
- 45 237. N Diamond Point Squatty Swung Vase - Mari. (nice color and irid.)
- 85 238. N Leaf Columns Swung Vase - Green (nice color and irid.)
- 105 239. N Leaf Columns Squatty Swung Vase - Pur. (nice irid. and detail)
- 1900 240. 18 1/2" TALL FENTON RUSTIC SWUNG FUNERAL VASE - GREEN (RARE AND VERY DESIRABLE WITH SUPER IRID.)
- 155 241. DUGAN LINED LATTICE SQUATTY SWUNG VASE - PUR. (SCARCE AND DESIRABLE SIZE WITH GREAT IRID.) \*
- 85 242. Dugan Lined Lattice Swung Vase - Pur. (scarce with great irid.)
- 20 243. Dugan Stippled Estate Bulbous Vase - Aqua (a Venetian line item in a rare color)
- 100 244. Imperial Freehand Bulbous Art Glass Vase - Blue (great irid. and very desirable)
- 190 245. WESTMORELAND CAROLINA DOGWOOD RUFFLED BOWL - BLUE OPAL. (VERY SCARCE WITH NICE COLOR AND IRID.)
- 245 246. WESTMORELAND CORINTH JACK IN THE PULPIT VASE - BLUE OPAL. (VERY DESIRABLE WITH GREAT COLOR AND IRID.)
- 100 247. Fenton Fentonia Tumbler - Blue (scarce; nice)
- 70 248. Fenton Apple Tree Tumbler - Blue (nice color and irid.)
- 45 249. Fenton Floral and Grape Tumbler - Blue (nice color and irid.)
- 100 250. IMPERIAL OCTAGON SMALL SIZED WATER PITCHER - PUR. (RARE AND DESIRABLE WITH BRIGHT IRID.)
- 45 251. Imperial Ripple Standard Swung Vase - Pur. (super irid.)
- 190 252. 8" Imperial Heavy Grape Flat Plate - Pur. (scarce; super irid.)
- 400 253. 9 1/2" FENTON ORANGE TREE FLAT PLATE - BLUE (VERY SCARCE AND DESIRABLE WITH BRIGHT IRID.)
- 85 254. Fenton ftd. Orange Tree Covered Butter Dish - Blue (very desirable; great color and irid.) \*
- 6000 255. 10" DUGAN WISHBONE AND SPADES FLAT CHOP PLATE - PUR. (ABSOLUTELY SUPER EXAMPLE WITH BRIGHT MULTI-COLORED IRID. - REALLY NICE)
- 160 256. 9" N G & C Plate with Basketweave Ext. - Green (very scarce with nice color and irid.)
- 650 257. 9 1/2" FENTON PEACOCK AND GRAPE FLAT PLATE - MARI. (SCARCE AND DESIRABLE WITH NICE COLOR AND IRID.)
- 175 258. 9" Fenton Peacock and Grape Ruffled Bowl - P. Opal. (very scarce with opal. on edge and nice irid.)
- 75 259. Fenton Peacock and Grape Spatula ftd. Ruffled Bowl - Ice Green Opal. (scarce and very desirable; really nice; small chip)
- 2500 260. 9" N ROSE SHOW VARIANT FLAT PLATE WITH RIBBED EXT. - MARI. (RARE AND VERY DESIRABLE WITH PINK HIGHLIGHTS)
- 1000 261. N ROSE SHOW 8 RUFFLED BOWL - AQUA OPAL. (RARE AND VERY DESIRABLE; NICE OPAL. AND IRID.)
- 750 262. 6 1/2" N "DREIBUS PARFAIT SWEETS" 6 RUFFLED BOWL WITH BASKETWEAVE EXT. - HOREHOUND (VERY RARE BASE COLOR FOR THIS ITEM; NICE)
- 110 263. N GRAPE AND GOTHIC ARCHES COVERED BUTTER DISH - BLUE (VERY RARE; NICE IRID.)
- 375 264. N BASKET OF ROSES STIPPLED HANDLED BON BON - PUR. (RARE ITEM; NICE SATINY IRID. AND COLOR)
- 500 265. DUGAN DAHLIA FTD. HANDLED WATER PITCHER - MARI. (VERY SCARCE AND HAS SUPER IRID.; NICE)
- 275 266. 11" Dugan Persian Garden Lg. Ruffled Fruit Bowl - P. Opal. (scarce item with excellent opal. and nice irid.)
- 600 267. 9 1/2" Dugan Cherries 8 Ruffled Bowl with Jeweled Heart Ext. - Pur. (scarce item with really nice irid.)
- 215 268. U.S. Glass Palm Beach Whimsey Bowl - Amy. (odd shape with goofus decor.)
- 325 269. Fenton Two Row Open Edge Hat - Celeste Blue (rare color; very desirable)
- 1400 270. N WIDE PANEL 4 LILY EPERGNE - PUR. (RARE IN THIS COLOR; GREAT IRID. WITH SOME MINOR ROUGHNESS)
- 1400 271. N WIDE PANEL 4 LILY EPERGNE - GREEN (ANOTHER DESIRABLE ITEM; NICE COLOR AND IRID.)
- 400 272. N DAISY AND DRAPE FTD. FLARED VASE - AQUA OPAL. (DESIRABLE WITH REALLY NICE OPAL. AND IRID.)
- 225 273. Fenton Vintage Grape Single Lily Epergne - Mari. (scarce with a nice satiny finish)
- 55 274. Fenton Illusion 2 Handled Bon Bon - Blue (scarce with nice color and irid.)
- 75 275. Fenton Blackberry 2 Row Open Edge Ruffled Hat - Green (scarce color with bright irid.)
- 15 276. Fenton Wreath of Roses Punch Cup - Blue (nice irid.)
- 15 277. N G & C Handled Punch Cup - Green (nice irid.)
- 200 278. Devilbiss Perfume Bottle in Original Box - Mari. (rare item esp. with the box)
- 20 279. Imperial Propeller Miniature Compote - Mari. (nice irid.)
- 20 280. Canada Dry Soda Bottle with Original Label - Mari. (unusual)



**Burns Auction Service**  
 P.O. Box 608  
 Bath, New York 14810

First Class  
 US Postage  
**PAID**  
 Permit No. 7  
 Hammondsport, NY

**2002 A.C.G.A.  
 Convention Auction!**

**LEE MARKLEY**  
**BOX 306**  
**MENTONE IN 46539**

