



# BURNS

AUCTION SERVICE

## 2002 Lincoln Land Convention Auction

**5:00 pm, Friday, June 7, 2002**

**Lots 1 - 260** (preview 3:00 pm)

**9:00 am, Saturday, June 8, 2002**

**Lots 261 - end** (preview 7:00 am)

*at the*

### Best Western

### Midway Hotel - Airport

5105 S. Howell Ave., Milwaukee, WI

(Exit 318 off I-94)

**(414) 769-2100 or 1-877-461-8547**





This year's Lincoln Land Convention Auction is one I've been waiting for since last fall. In the midst of our auction blitz we have a selection of glass from 2 private mid-west collections plus glass from the Marie McGee collection. All this makes for a selection with rarities, pastels, great plates, items with great color and iridescence.

Make your plans yesterday and be sure to show up. The Best Western Midway Hotel will host the event again this year. It's located directly across from the Milwaukee Airport on Howell Ave., just off Exit 318 of I-94. You can call the hotel direct for reservations at (414) 769-2100 or 1-877-461-8547. For more information on the convention, call Pres. Jim Lewis at (847) 931-7306.

Mail, phone, fax and email bids due by Thursday, June 6, 2002.

### Burns Auction Service

Tom Burns  
P.O. Box 608  
Bath, New York 14810  
(607) 776-7942 Cell: 731-9302

Bill Richards  
44 Water Street, Poland OH 44514  
(330) 757-2001  
FAX (330) 757-4917

Bill Richards III  
2253 Country Lane  
Poland, OH 44514  
(330) 755-2620

#### Mail Bids honored under the following conditions:

1. No deposit required. Bidders will take full responsibility to honor any and all bids we execute for them. Payment in full plus postage and handling required after notification and before we ship any item to them.
2. Items are bid on in perfect condition with average or above average iridescence OR as listed in the brochures. Bids will not be carried out when damage on an item has been found during the auction. **PEOPLE PRESENT AT THE AUCTION ARE RESPONSIBLE FOR FINDING ANY PINHEADS, WEAR, SPOTTINESS, MANUFACTURER'S DEFECTS OR ANY OTHER MINOR FLAWS, ETC.**
3. Successful bidders will be notified by collect call from the auctioneer **SO BE SURE TO INCLUDE PHONE NUMBER.**
4. Phone inquiries about the glass or any other questions are welcome.
5. If you have some other person at the auction bidding for you, they must pay for the item before taking it.
6. Any terms or conditions given the day of the auction will supersede any previously published information.
7. Mail, e-mail, fax and phone bids are due by Wednesday, June 5, 2002.

Visit our website at: <http://www.woodsland.com/burnsauction/>

- |   |  |
|---|--|
| <p>___ 1. Dugan (?) Pastel Swan - Blue Opal. (not Carnival; scarce with great opal. and a hint of Goofus trim)</p> <p>___ 2. Dugan Pastel Swan - Green Opal. (not Carnival; nice color &amp; opal.)</p> <p>___ 3. (2) N Singing Birds Tumblers - Pur. (nice irid.; selling choice)</p> <p>___ 4. N Singing Bird Handled Mug- Pur. (nice irid.)</p> <p>___ 5. <b>N PEACOCK AT THE URN 'ALL OVER STIPPLED' LG. ICE CREAM BOWL - SAPPHIRE (EXTREMELY RARE WITH SUPER COLOR AND IRID.; ONE OF THE FINEST EXAMPLES I'VE EVER SEEN)</b></p> <p>___ 6. <b>N PEACOCK AT THE URN 'ALL OVER STIPPLED' LG. ICE CREAM BOWL - DK. MARI. (SUPER, SUPER DARK COLOR WITH GREAT IRID.)</b></p> <p>___ 7. <b>N PEACOCKS FLARED PLATE WITH RIBBED EXT. - ICE BLUE (RARE AND DESIRABLE WITH BRIGHT IRID.)</b></p> <p>___ 8. N Peacocks Stippled Bowl with Pie Crust Edge, Narrow Base and Ribbed Ext. - Blue (very scarce and desirable; irid. is silvery)</p> <p>___ 9. <b>N PEACOCKS RUFFLED BOWL WITH RIBBED EXT. - BLUE OPAL. (VERY SCARCE WITH NICE OPAL.; NOT CARNIVAL)</b></p> <p>___ 10. <b>N PEACOCKS RUFFLED BOWL WITH RIBBED EXT. - ICE BLUE (RARE AND DESIRABLE WITH NICE IRID.)</b></p> <p>___ 11. <b>N BEADED CABLE FTD. RUFFLED ROSE BOWL - AQUA OPAL. (A BEAUTIFUL BUTTERSCOTCH EXAMPLE WITH NICE IRID.)</b></p> <p>___ 12. N Beaded Cable ftd. Ruffled Rose Bowl - Blue / Elec. Blue (very scarce; nice base color with blue highlights)</p> <p>___ 13. <b>N TORNADO SMALL SIZE VASE WITH TRI-CORNERED TOP - PUR. (RARE AND DESIRABLE WITH BRIGHT IRID.)</b></p> <p>___ 14. <b>N TORNADO SMALL SIZE VASE WITH TRI-CORNERED TOP - DK. MARI. (RARE AND VERY DESIRABLE; DARK COLOR WITH BRIGHT IRID.)</b></p> <p>___ 15. <b>N ROSE SHOW RUFFLED BOWL - HONEY AMBER (VERY RARE AND VERY DESIRABLE; SUPER BASE COLOR WITH GREAT IRID.)</b></p> <p>___ 16. <b>N ROSE SHOW RUFFLED BOWL - AQUA / MARI. (VERY RARE BASE COLOR WITH ATTRACTIVE IRID.)</b></p> <p>___ 17. N Rose Show Ruffled Bowl - Dk. Pur. (very scarce; dark base color with blue highlights)</p> <p>___ 18. N Rose Show Ruffled Bowl - Blue Opal. (very scarce with nice opal.; not Carnival)</p> <p>___ 19. <b>N ROSE SHOW FLAT PLATE- DK. MARI. (SUPER EXAMPLE WITH BRIGHT IRID.; REALLY NICE)</b></p> <p>___ 20. <b>N POPPY SHOW FLARED PLATE- DK. MARI. (NICE ITEM WITH SUPER IRID. - REDS AND YELLOWS)</b></p> <p>___ 21. <b>N POPPY SHOW RUFFLED BOWL - LIME ICE GREEN (RARE BASE COLOR; IRID. IS LIGHT)</b></p> <p>___ 22. 13" Tall x 4 1/2" Base N Wide Panel (or Flute) Mid Size Swung Vase- Mari. / Clear (rare variation; average color and irid.)</p> <p>___ 23. 14 - 14" Tall x 4 1/2" Base N Wide Panel Mid Size Swung Vase- Green / Mari.</p> <p>___ 24. 9 1/2 - 10" Tall x 4 1/2" Base N Flute Mid Size Swung Vase - Green / Mari.</p> <p>___ 25. <b>N GOOD LUCK 8 RUFFLED BOWL WITH RIBBED EXT. - AQUA / SAPPHIRE (RARE AND EXTREMELY DESIRABLE; SUPER BASE COLOR AND SUPER IRID.)</b></p> | <p>___ 26. <b>N THREE FRUITS STIPPLED 8 RUFFLED BOWL WITH RIBBED EXT. - AQUA / SAPPHIRE (RARE AND EXTREMELY DESIRABLE; SUPER, SUPER COLOR AND IRID.)</b></p> <p>___ 27. <b>N THREE FRUITS MEDALLION STIPPLED RUFFLED FTD. BOWL WITH MEANDER EXT. - ICE BLUE (RARE AND DESIRABLE WITH NICE IRID.; HAS MANUF. DIRT ON FEET)</b></p> <p>___ 28. <b>N THREE FRUITS RUFFLED BOWL WITH PLAIN EXT. - SORTA SMOKE (VERY ODD BASE COLOR AND IRID.; REALLY NICE ITEM)</b></p> <p>___ 29. <b>N FRUIT AND FLOWERS STEMMED HANDLED BON BON WITH BASKETWEAVE EXT. - ICE BLUE (RARE WITH GREAT COLOR AND IRID.; REALLY NICE)</b></p> <p>___ 30. <b>9 1/2" N FRUITS AND FLOWERS LG. 8 RUFFLED BOWL WITH BASKETWEAVE EXT. - ICE GREEN (RARE AND VERY DESIRABLE WITH SUPER BASE COLOR AND IRID.)</b></p> <p>___ 31. <b>N CONCAVE DIAMOND 14 PC. COVERED LEMONADE SET- CELESTE BLUE (RARE SET COMPLETE WITH COASTERS; PERFECT)</b></p> <p>___ 32. 8" N Stretch Flared Round Bowl with Metal Handle with Roses - Russet Green (cute outfit that's a bit different)</p> <p>___ 33. N Lg. Stretch Paneled Covered Candy Dish with Cathedral Lid - Russet Green (nice color and size)</p> <p>___ 34. N Round Handled Bushel Basket - Dk. Mari. (nice color and irid.; has straw mark on handle)</p> <p>___ 34A. <b>N GRAPE ARBOR TANKARD WATER PITCHER - ICE BLUE (RARE AND VERY DESIRABLE; FROSTY AND PERFECT WITH NICE PASTEL IRID.)</b></p> <p>___ 35. N Acorn Burr 8 pc. Ruffled Punch Set - Ice Blue (top is damaged but base and cups are OK)</p> <p>___ 36. N Greek Key 8 Ruffled Bowl with Basketweave Ext. - Green (scarce; sorta satiny)</p> <p>___ 37. N Peach Handled Water Pitcher - White (rare with a nice frosty finish; worn gold)</p> <p>___ 38. N Blossomtime Stemmed 6 Ruffled Compote - Pur. (rare and desirable pattern; nice satiny finish)</p> <p>___ 39. N Hearts and Flowers Stemmed 6 Ruffled Compote - Blue Opal. (not Carnival; scarce with great opal.)</p> <p>___ 40. <b>N HEARTS AND FLOWERS RUFFLED BOWL WITH RIBBED EXT. - ICE GREEN (VERY SCARCE WITH NICE IRID.)</b></p> <p>___ 41. N Hearts and Flowers Ruffled Bowl with Ribbed Ext. - Ice Blue (scarce and desirable; frosty with nice irid.)</p> <p>___ 42. N Hearts and Flowers Ruffled Bowl with Ribbed Ext. - Mari. (scarce with nice color and average irid.)</p> <p>___ 43. <b>N EMBROIDERED MUMS RUFFLED BOWL WITH RIBBED EXT. - BLUE / ELEC. BLUE (RARE AND DESIRABLE ITEM WITH BLUE HIGHLIGHTS)</b></p> <p>___ 44. <b>N G &amp; C VARIANT FLARED PLATE WITH PLAIN EXT. - PUR. (A BEAUTY WITH BRIGHT BLUE HIGHLIGHTS)</b></p> <p>___ 45. <b>N G &amp; C 8 PC. TABLE SIZE RUFFLED PUNCH SET-ICE GREEN (ABSOLUTELY SUPER RARE COMPLETE SET! PERFECT WITH GREAT COLOR AND IRID.; DOES HAVE PIGMENT PATCH IN BODY)</b></p> |
|---|--|



46. **N G & C COVERED HANDLED COOKIE JAR-ICE GREEN (VERY RARE AND DESIRABLE; DARK COLOR WITH NICE IRID.)**
47. **N G & C STIPPLED BOWL WITH PIE CRUST EDGE AND RIBBED EXT. - ICE BLUE (VERY SCARCE AND VERY DESIRABLE; NICE COLOR AND IRID.)**
48. **N G & C COVERED COMPOTE - DK. MARI. (RARE AND VERY DESIRABLE COLOR; DARK AND NICE)**
49. **N WISHBONE FTD. RUFFLED BOWL WITH RUFFLES AND RINGS EXT. - ICE GREEN (RARE AND VERY TOUGH TO FIND; GREAT COLOR AND IRID.)**
50. **6" N 'JOCKEY CLUB' FLARED PLATE WITH BASKETWEAVE EXT. - LT. AMY. (VERY RARE AND REALLY TOUGH; ESPECIALLY IN THIS BASE COLOR)**
51. **11 1/2" Tall x 4 3/4" Base N Tree Trunk Mid Size Swung Vase - Green (scarce with great color and irid.; manuf. peeling on edge)**
52. **N CORN VASE WITH STALK BASE - ICE BLUE (EXTREMELY RARE AND VERY DESIRABLE; GREAT COLOR AND IRID.)**
53. **N CORN VASE WITH STALK BASE - LIME ICE GREEN (VERY SCARCE WITH GREAT BASE COLOR AND IRID.)**
54. **N CORN VASE WITH STALK BASE - LIME ICE GREEN (LIKE ABOVE ITEM WITH AVERAGE IRID.; NICE)**
55. **N Corn Vase with Stalk Base - White (scarce with average color and irid.)**
56. **N CORN VASE WITH PLAIN BASE - MARI. (RARE AND DESIRABLE; NICE DARK COLOR)**
57. **N CORN VASE WITH STALK BASE - OLIVE GREEN (VERY RARE BASE COLOR WITH REALLY NICE IRID.)**
58. **N CORN VASE WITH PLAIN BASE - PUR. (ACTUALLY QUITE A RARE ITEM WITH REALLY NICE IRID.)**
- 58A. **N DAISY AND DRAPE FLARED FTD. VASE - AQUA OPAL. (A POPULAR RARITY WITH A PASTEL FINISH AND NICE IRID.)**
59. **N Wide Panel Ind. ftd. Salt Dip - Mari. (scarce; satiny)**
60. **N Hearts and Flowers Stemmed Ruffled Compote with Ribbed Ext. - Green (very rare and very desirable; great base color and irid.; glued chip on base)**
61. **N HEARTS AND FLOWERS STEMMED RUFFLED COMPOTE WITH RIBBED EXT. - ELEC. BLUE (RARE, DESIRABLE WITH BRIGHT BLUE HIGHLIGHTS - SUPER)**
62. **N Hearts and Flowers Stemmed Ruffled Compote with Ribbed Ext. - Pur. (rare base color with nice multi-colored highlights)**
63. **N HEARTS AND FLOWERS STEMMED RUFFLED COMPOTE WITH RIBBED EXT. - AQUA OPAL. (RARE AND VERY DESIRABLE; NICE PASTEL EXAMPLE)**
64. **N Hearts and Flowers Stemmed Ruffled Compote with Ribbed Ext. - Aqua Opal. (rare and desirable with a bit of Butterscotch)**
65. **N HEARTS AND FLOWERS STEMMED RUFFLED COMPOTE WITH PLAIN EXT. - ICE BLUE (RARE COLOR FOR THIS PATTERN; IRID. A BIT LIGHT)**
66. **N HEARTS AND FLOWERS STEMMED RUFFLED COMPOTE WITH PLAIN EXT. - ICE GREEN (ANOTHER RARE COLOR FOR THIS PATTERN; LIGHT IRID.)**
67. **N Hearts and Flowers Stemmed Ruffled Compote with Plain Ext. - White (scarce item; irid. is a bit light)**
68. **N Hearts and Flowers Stemmed Ruffled Compote with Ribbed Ext. - Dk. Mari. (scarce and desirable; nice dark color and irid.)**
69. **N HEARTS AND FLOWERS STEMMED LOW RUFFLED COMPOTE WITH RIBBED EXT. - PASTEL MARI. (UNUSUAL SHAPE WITH GREAT IRID.; DIFFERENT)**
70. **N Hearts and Flowers Stemmed Ruffled Compote with Plain Ext. - Lt. Mari. (sorta pastel Marigold with lighter irid.)**
71. **N HEARTS AND FLOWERS RUFFLED BOWL WITH RIBBED EXT. - ICE GREEN (RARE AND DESIRABLE; NICE IRID.)**
72. **N HEARTS AND FLOWERS RUFFLED BOWL WITH RIBBED EXT. - ICE BLUE (VERY SCARCE AND DESIRABLE; SUPER IRID.)**
73. **N PEACOCK AT THE URN IND. ROUND ICE CREAM BOWL - ELEC. BLUE (SUPER COLOR WITH BRIGHT BLUE IRID.)**
74. **N Peacock at the Urn Ind. Round Ice Cream Bowl - Mari. (nice color)**
75. **N PEACOCKS RUFFLED BOWL WITH RIBBED EXT. - AQUA OPAL. (RARE ITEM; VERY NICE IRID. AND OPAL. ALONG EDGE)**
76. **N PEACOCKS RUFFLED BOWL WITH RIBBED EXT. - ELEC. BLUE (RARE AND VERY DESIRABLE WITH BRIGHT BLUE IRID.)**
77. **N Peacocks Stippled Ruffled Bowl with Ribbed Ext. - Dk. Mari. (a beautiful example with bright irid.)**
78. **N Peacocks Plate with Ribbed Ext. - Ice Green (scarce item with nice color and irid.)**
79. **N Singing Bird Handled Mug - Mari. (nice color)**
80. **N SINGING BIRD HANDLED MUG - WHITE (RARE AND REALLY TOUGH TO FIND; NICE IRID.)**
81. **N SINGING BIRD HANDLED MUG - HOREHOUND (RARE BASE COLOR WITH EXCELLENT IRID.)**
82. **N Singing Bird Handled Mug - Green (super irid.; quite scarce)**
83. **N Singing Bird Handled Mug - Elec. Blue (really super irid.)**
84. **N Singing Bird Handled Mug - Pur. (nice color and irid.)**
85. **N DANDELION HANDLED MUG- ELEC. BLUE (A FANTASTIC EXAMPLE WITH BRIGHT BLUE IRID.)**
86. **N Dandelion Handled Mug - Blue (scarce base color with average irid.)**
87. **N Dandelion Handled Mug - Pur. (scarce; nice color with average irid.)**
88. **N Dandelion Handled Mug - Mari. (very scarce with nice irid.)**
89. **N DANDELION HANDLED MUG - AQUA OPAL. (REALLY NICE EXAMPLE WITH GREAT COLOR AND IRID. AND OPAL.)**
90. **N IVY TOWN PUMP- PUR. (RARE AND VERY DESIRABLE WITH BRIGHT HIGHLIGHTS - PINHEAD ON BASE)**
91. **N FINE CUT AND ROSES FTD. RUFFLED CANDY DISH WITH FANCY INT. - AQUA OPAL. (A RARE PASTEL EXAMPLE WITH EXCELLENT OPAL. AND PRETTY GOOD FEET)**
92. **N Fine Cut and Roses ftd. Ruffled Rose Bowl - Amy. (lighter base color; nice)**
93. **N Fine Cut and Roses ftd. Ruffled Rose Bowl - Pur. (nice color and irid. - nice example)**
94. **N Fine Cut and Roses ftd. Ruffled Rose Bowl - Mari. (nice color and irid.)**
95. **N GOOD LUCK STIPPLED LOW RUFFLED BOWL WITH RIBBED EXT. - BLUE (VERY SCARCE ITEM; NICE IRID.)**
96. **N GOOD LUCK 8 RUFFLED BOWL WITH RIBBED EXT. - PASTEL MARI. (RARE AND UNUSUAL EXAMPLE; LIGHT AND BRIGHT)**
97. **N RASPBERRY HANDLED MILK PITCHER - GREEN (VERY SCARCE WITH A NICE SATINY FINISH)**
98. **N Raspberry Handled Milk Pitcher - Pur. (very scarce with a nice satiny finish)**
99. **N Raspberry Handled Milk Pitcher - Mari. (scarce item with a satiny finish)**
100. **N G & C HANDLED WHISKEY DECANTER AND STOPPER - PUR. (VERY SCARCE AND DESIRABLE; STOPPER HAS GOLD IRID.)**
101. **N G & C Handled Whiskey Decanter and Stopper - Mari. (very scarce item; base color a bit lighter)**
102. **N G & C Cologne Bottle and Stopper - Dk. Mari. (has to be one of the darkest I've seen!)**
103. **N G & C Handled Nappy from Punch Cup - Mari. (scarce flared variation)**
104. **N G & C Tri-Cornered Nappy from Punch Cup - Pur. (nice color)**
105. **N G & C FTD. HATPIN HOLDER - GREEN (VERY SCARCE ITEM; GREAT COLOR AND IRID.)**
106. **N G & C ftd. Hatpin Holder - Pur. (nice, scarce item; bright color and irid.)**
107. **N G & C FTD. HATPIN HOLDER - DK. MARI. (SCARCE ITEM WITH A NICE DARK BASE COLOR)**
108. **N G & C SHOT GLASS - PUR. (VERY SCARCE WITH NICE COLOR AND IRID.)**
109. **N G & C Shot Glass - Mari. (very scarce with nice color and irid.)**
110. **N G & C 2 PC. CANDLE LAMP - GREEN (RARE AND VERY DESIRABLE WITH A NICE SATINY FINISH)**
111. **N G & C 2 PC. CANDLE LAMP - PUR. (RARE AND DESIRABLE WITH A LIGHT SATINY IRID.)**
112. **N G & C 2 PC. CANDLE LAMP - MARI. (RARE AND DESIRABLE; A WELL MATCHED SET)**
113. **N G & C Covered Sweetmeat Compote - Pur. (very scarce with nice color and irid.)**
- 113A. **N G & C Covered Sweetmeat Compote - Dk. Mari. (rare and desirable; super color; has polished chip on finial)**
114. **N G & C Handgrip Plate with Basketweave Ext. - Amy. (scarce with nice satiny irid.)**
115. **N G & C PERFUME BOTTLE AND STOPPER - PUR. (RARE AND SUPER - BRIGHT IRID. AND PERFECT)**
116. **N G & C PERFUME BOTTLE AND STOPPER - DK. MARI. (ANOTHER RARE AND SUPER ITEM WITH BRIGHT IRID.)**
117. **N G & C Small Oval Pin Tray - Pur. (very scarce with nice even irid.)**
118. **N G & C Small Oval Pin Tray - Mari. (very scarce with nice even irid.)**
119. **N G & C Covered Powder Jar - Pur. (scarce with a satiny irid.)**
120. **N G & C Lg. Oval Dresser Tray - Pur. (very scarce with nice bright irid.)**
121. **N G & C Lg. Oval Dresser Tray - Dk. Mari. (scarce with nice color)**
122. **7 1/2" WILD STRAWBERRY HANDGRIP PLATE WITH BASKETWEAVE EXT. - PUR. (SUPER EXAMPLE WITH BRIGHT IRID. - NICE)**
123. **N Strawberry Plate with Basketweave Ext. - Green (scarce with nice satiny irid.)**
124. **N Nippon Bowl with Pie Crust Edge and Ribbed Ext. - Ice Blue (scarce with nice irid.)**
125. **N BEADED CABLE FTD. RUFFLED ROSE BOWL - AQUA OPAL. (RARE AND VERY DESIRABLE - A GREAT LOOKING ITEM)**
126. **N BEADED CABLE FTD. RUFFLED ROSE BOWL - WHITE (RARE; NICE AND FROSTY; REALLY TOUGH)**
127. **N Beaded Cable ftd. Ruffled Rose Bowl - Blue / Elec. Blue (very scarce with bright blue highlights)**
128. **N Beaded Cable ftd. Ruffled Rose Bowl - Green (scarce with nice color and irid.)**
129. **N Beaded Cable ftd. Ruffled Rose Bowl - Mari. (nice color and irid.)**
130. **N Beaded Cable ftd. Ruffled Rose Bowl - Custard / Nutmeg (scarce with Nutmeg around pattern)**



131. N Beaded Cable ftd. Ruffled Rose Bowl with Ribbed Int. - Amy. (satiny finish)
132. N Beaded Cable ftd. Ruffled Rose Bowl with Ribbed Int. - Green (scarce; has interior irid.)
133. N Leaf and Beads ftd. Rose Bowl - Green / Mari. (has heavy Mari. overlay)
134. N Leaf and Beads ftd. Rose Bowl - Green / Lt. Mari. (has a lighter Mari. overlay)
135. **N LEAF AND BEADS FTD. ROSE BOWL - AQUA OPAL. (VERY SCARCE AND DESIRABLE; NICE COLOR AND IRID.)**
136. N Leaf and Beads ftd. Rose Bowl - Blue / Elec. Blue (very scarce with really nice blue highlights)
137. N Leaf and Beads ftd. Rose Bowl - Mari. (nice color and irid.)
138. N Leaf and Beads ftd. Rose Bowl with Floral Int. - Dk. Mari. (scarce with a nice satiny finish)
139. **N EMBROIDERED MUMS RUFFLED BOWL WITH RIBBED EXT. - BLUE (RARE AND DESIRABLE PATTERN WITH NICE IRID.)**
140. N Three Fruits Stippled Plate with Ribbed Ext. - Dk. Mari. (very scarce with dark overlay and irid.)
141. N Three Fruits Plate with Plain Ext. - Green (scarce with really nice color and irid.)
142. N Three Fruits Plate with Basketweave Ext. - Amy. (scarce with a bright satiny finish)
143. **N THREE FRUITS RUFFLED BOWL WITH PLAIN EXT. - HONEY / AMBER (RARE AND ODD BASE COLOR WITH BRIGHT IRID.)**
144. N Three Fruits Domed Ruffled Bowl with Vintage / Basketweave Ext. - Lt. Amber or Horehound (odd base color with a satiny finish)
145. **2 1/2" X 4 3/4" EUROPEAN SPHINX FIGURAL PAPER-WEIGHT - LT. AMBER / SILVER (EXTREMELY RARE ITEM - ONLY 1 OR 2 KNOWN; NEATI)**
146. 6" European Tornado Ruffled Top Vase with Pontil - Odd Mari. (rare and desirable; has a repair at base)
147. European Geometric 2 pc. Ruffled Crimped Edge Epergne with Metal Connector - Mari. (odd geometric diamond-style pattern; unusual)
148. **EUROPEAN TIGER LILY SMALL SIZE HANDLED WATER PITCHER - BLUE (RARE ITEM WITH GREAT BASE COLOR AND BRIGHT IRID.)**
149. European Tiger Lily Tumbler - Blue (matches above item; really nice irid.)
150. **10" TALL EUROPEAN PINWHEEL LG. CYLINDER VASE - PUR. (RARE PATTERN IN A RARE SIZE IN A RARE COLOR)**
151. 7" Tall x 10" Wide Australian Butterfly Bush (?) Lg. 12 Ruffled Compote - Pur. (rare and desirable size and pattern)
152. **EUROPEAN 'PINEAPPLE FAN' 8 PC. WINE SET - MARI. (RARE COMPLETE SET WITH NICE COLOR AND IRID.)**
153. **M'BURG HOBSTAR AND FEATHER HANDLED CRACKER JAR - CRYSTAL (RARE AND DESIRABLE; RARE AND NICE)**
154. M'burg Ohio Star Tankard Handled Cider Pitcher - Crystal (very scarce with great detail)
155. **M'BURG OHIO STAR 14 PC. MASTER PUNCH SET - CRYSTAL (RARE AND EXTREMELY DESIRABLE; A GREAT SET)**
156. M'burg Ohio Star Tall Cylinder Vase - Crystal (scarce; nice detail)
157. M'burg Ohio Star Covered Butter Dish - Crystal (scarce; nice)
158. M'burg Ohio Star Covered Sugar Bowl - Crystal (scarce; nice)
159. M'burg Ohio Star Handled Spooner - Crystal (scarce)
160. **M'BURG OHIO STAR HANDLED TOOTHPICK HOLDER - CRYSTAL (VERY SCARCE AND DESIRABLE; A TOUGHIE)**
161. **9" M'BURG PEACOCK DEEP ROUND FLARED MASTER BERRY BOWL - AMY. (RADIUM AND REALLY SUPER; HAS BEE AND NO BEADING)**
162. 10 1/2" M'burg Peacock at the Urn Lg. Bowl with 3 in 1 Edge - Green (scarce; satiny finish; has bee)
163. M'burg Holly Sprig Handled Tri-Cornered Nappy - Green (radium and very desirable; super)
164. 6 - 6 1/2" M'burg Holly Sprig Tri-Cornered Bowl - Amy. (radium and very desirable; super)
165. **8 3/4" M'BURG BIG FISH LOW 6 RUFFLED BOWL - AMY. (RARE AND RADIUM; HAS BRIGHT IRID. THAT'S LIGHT IN THE CENTER)**
- 165A **8 - 8 1/2" M'BURG TROUT AND FLY ICE CREAM SHAPED BOWL - GREEN (ONE OF THE BETTER SATIN EXAMPLES I'VE SEEN; SUPER ITEM)**
166. 8 1/4" M'burg Trout and Fly Ice Cream Shaped Bowl - Mari. (scarce and satiny; has epoxied area on base)
167. 9" M'burg Trout and Fly 6 Ruffled Bowl - Mari. (scarce and satiny with nice irid.)
168. Cambridge Double Star Handled Water Pitcher - Green (scarce; nice irid.; problem at handle?)
169. 6 - 7" M'burg Frosted Hobstar and Feather Oval Relish Tray - Crystal / Frosted (scarce; perfect)
170. **M'BURG WHIRLING LEAVES DIAMOND SHAPED CRIMPED EDGE BOWL - MARI. / VASELINE (EXTREMELY RARE AND DESIRABLE; SUPER RADIUM - SUPER SHAPE - WOW!)**
171. **M'BURG WHIRLING LEAVES TRI-CORNERED CRIMPED EDGE BOWL - MARI. (RARE SHAPE WITH GREAT RADIUM FINISH)**
172. **M'BURG WHIRLING LEAVES TRI-CORNERED CRIMPED EDGE BOWL - GREEN (RARE AND DESIRABLE WITH NICE RADIUM FINISH)**
173. M'burg Nesting Swan 6 Ruffled Bowl - Amy. (very scarce and desirable with a strong satiny finish)
174. 8" M'burg Grape Wreath Round Flared Bowl - Mari. (radium finish; scarce)
175. **10 1/2" M'BURG BLACKBERRY WREATH LG. ICE CREAM BOWL - BLUE (EXTREMELY RARE AND VERY DESIRABLE; SUPER SATINY FINISH)**
176. **10" M'BURG BLACKBERRY WREATH LG. ICE CREAM BOWL - AMY. (A SUPER RADIUM EXAMPLE WITH GREAT COLOR AND BRIGHT IRID.)**
177. 6" M'burg Blackberry Wreath Lg. Ice Cream Bowl - Amy. (matches above with super radium finish)
178. 10" M'burg Blackberry Wreath Lg. Bowl with 3 in 1 Edge - Green (very scarce shape; nice satiny finish)
179. 6 - 6 1/2" M'burg Blackberry Wreath Sauce with 3 in 1 Edge - Green (satiny finish in a scarce shape)
180. 7 1/2" M'burg Blackberry Wreath Low Ruffled Bowl - Amy. (radium; odd low ruffle)
181. **M'BURG HOBNAIL ROSE BOWL - MARI. (VERY SCARCE; NICE COLOR AND RADIUM IRID.)**
182. **9" M'BURG RAYS AND RIBBONS DEEP ROUND ICE CREAM SHAPED BOWL - AMY. (RADIUM AND A VERY DESIRABLE SHAPE; SUPER)**
183. **7 3/4" M'BURG PRIMROSE DEEP ROUND BOWL - AMY. (SATINY AND A VERY RARE SHAPE FOR THIS ITEM; SUPER)**
184. 9 1/2" M'burg Primrose 6 Ruffled Bowl - Mari. (really nice radium finish)
185. **9" TALL M'BURG ROSALIND DEEP ROUND FLARED STEMMED JELLY COMPOTE - MARI. (EXTREMELY RARE ITEM - I BELIEVE ONLY 2 KNOWN; HAS STRONG IRID.; REALLY NICE)**
186. **M'BURG DEEP GRAPE STEMMED 4 SIDED COMPOTE - GREEN (VERY RARE ITEM; HAS AVERAGE IRID. - REALLY TOUGH)**
187. **M'BURG HANGING CHERRIES ROUND FLARED STEMMED COMPOTE - MARI. (VERY RARE WITH A NICE SATINY FINISH; FROM WILSON COLLECTION)**
188. **M'BURG LEAF AND LITTLE FLOWERS SMALL FLARED COMPOTE - GREEN (RARE WITH GREAT RADIUM FINISH)**
189. **M'BURG LEAF AND LITTLE FLOWERS SMALL FLARED COMPOTE - AMY. (ANOTHER VERY DESIRABLE RADIUM ITEM)**
190. **M'BURG POPPY ICE CREAM SHAPED "SALVER" STEMMED COMPOTE - GREEN (RARE AND VERY DESIRABLE SHAPE; RADIUM AND NICE)**
191. M'burg Poppy Deep Flared Stemmed Compote - Mari. (unusual item with exterior irid. only - odd)
192. M'burg Boutonniere Stemmed 6 Ruffled Compote - Amy. (scarce; nice satiny irid.)
193. M'burg Peacock Tail Variant 6 Ruffled Compote - Amy. (radium and really desirable - nice!)
194. 9 1/2" M'burg Holly Whirl 6 Ruffled Bowl - Amy. (scarce with a nice satiny finish)
195. **8" TALL X 5 1/4" BASE M'BURG WILD ROSE SMALL SIZE KEROSENE LAMP - GREEN (EXTREMELY RARE; HAS SMALL FONT AND A BEAUTIFUL RADIUM FINISH)**
196. **9 1/2 - 10" M'BURG FLEUR DE LIS 6 RUFFLED CRIMPED EDGE BOWL - GREEN (SUPER RADIUM AND SUPER DESIRABLE - NICE!)**
197. 8 3/4" M'burg Fleur de Lis Domed Ice Cream Shaped Bowl - Amy. (radium and very desirable; really nice; may have pinhead)
198. **8 1/2" M'BURG LITTLE STARS ICE CREAM SHAPED BOWL - MARI. (RARE SIZE IN A RARE SHAPE; HAS A REALLY NICE SATINY FINISH)**
199. 7" M'burg Little Stars 6 Ruffled Bowl - Green (scarce; has a really nice satiny finish)
200. **M'BURG ROSES AND FRUIT 2 HANDLED STEMMED BON BON - GREEN (RARE AND RADIUM; REALLY NICE; FROM WILSON COLLECTION)**
201. **M'BURG NIGHT STARS 2 HANDLED 2 SIDED CARD TRAY - GREEN (RARE PATTERN; NICE COLOR)**
202. 7 3/4" M'burg Holly Sprig Tri-Cornered Bowl - Lt. Mari. (rare shape and has a nice radium finish)
203. **10" M'BURG SEAWEED LG. 6 RUFFLED BOWL - GREEN (SATINY AND NICE - TOUGH TO FIND A 6 RUFFLED ITEM)**
204. 10" M'burg Seaweed Lg. Bowl with a 3 in 1 Edge - Amy. (very scarce with nice satiny irid.; chip on base)
205. **10" M'BURG PEACOCK LG. 6 RUFFLED BOWL - AMY. (RARE AND RADIUM; HAS NO BEE AND NO BEADING)**
206. 9" M'burg Peacock Deep Flared Master Berry Bowl - Mari. (nice pastel radium finish; attractive)
207. 10" M'burg Peacock at the Urn Lg. 6 Ruffled Bowl - Amy. (satiny and nice; has bee but no beading)



208. 9" M'BURG PEACOCK AT THE URN 'MYSTERY' BOWL WITH 3 IN 1 EDGE - GREEN (RADIUM AND VERY DESIRABLE WITH GREAT COLOR AND IRID.)
209. 5 1/2" M'burg Peacock Deep Flared Ind. Berry Bowl - Amy. (radium and really desirable)
210. 10" M'BURG MANY STARS 6 RUFFLED BOWL WITH 6 POINTED STAR - MARI. (RARE AND A SUPER SATINY EXAMPLE)
211. 9" M'BURG ZIG ZAG ICE CREAM SHAPED BOWL - MARI. (VERY SCARCE AND DESIRABLE WITH A SUPER RADIUM FINISH)
212. 10" M'burg Zig Zag 6 Ruffled Bowl - Amy. (rare pattern with a satiny finish)
213. 8 1/2" M'burg Strawberry Wreath 6 Ruffled Crimped Edge Bowl - Mari. (super radium and has a great crimp)
214. 6" M'burg Holly Sprig Tri-Cornered Bowl - Amy. (radium and nice with a spotty finish)
215. KRSTAL HOBSTAR AND HONEYCOMB FLARED COMPOTE - RUBY FLASH / CRYSTAL (RARE ITEM; GOLD TRIM SLIGHTLY WORN; REALLY NEAT)
216. M'burg Hobstar and Feather Sugar Base only - Crystal (scarce part - not frosted)
217. M'burg Palm Wreath Celery Vase - Crystal (very scarce item; desirable)
218. M'burg Palm Wreath Tankard Tumbler - Crystal (very scarce)
219. 8 - 8 1/2" M'burg Potpourri Deep Ice Cream Shaped Bowl - Crystal (scarce shape)
220. CAMBRIDGE BUZZ SAW SMALL SIZED CRUET AND STOPPER - GREEN (SIGNED NEARCUT; GREAT COLOR AND IRID.)
221. Cambridge Cologne Bottle with Uniridized Stopper - Green (super colored base, stopper clear Green)
222. CAMBRIDGE INVERTED STRAWBERRY COVERED POWDER JAR - MARI. (RARE AND VERY DESIRABLE; SUPER COLOR)
223. 6 1/4" M'burg Cosmos Ice Cream Shaped Bowl - Green (radium and nice)
224. 7" M'burg Cherries Ice Cream Shaped Bowl - Amy. (has a nice sorta radium finish)
225. M'BURG SEACOAST PIN TRAY - AMY. (RARE AND DESIRABLE; PRETTY NICE IRID.)
226. M'BURG SUNFLOWER PIN TRAY - GREEN (RARE AND DESIRABLE WITH GREAT COLOR AND DETAIL)
227. M'BURG SWIRL HOBNAIL ROSE BOWL - PUR. (VERY SCARCE WITH GREAT COLOR AND IRID.)
228. 9" M'burg Trout and Fly Bowl with 3 in 1 Edge - Mari. (satiny irid.; very scarce)
229. (2) Frames: 1 with 33 Assorted Buttons and 1 with 30 Assorted Buttons (various designs) - Dark (selling choice; some are different)
230. WESTMORELAND MINIATURE INTAGLIO FLOWER STEMMED ALMOND CUP - DK. MARI. (RARE AND DESIRABLE MINIATURE WITH SUPER COLOR)
231. 3 1/2" Square Westmoreland Intaglio Floral 4 sided Miniature Bowl - P. Opal. (very scarce item with opal. on the edge)
232. 2 3/4" Long Maker? Ind. Oval Eye Cup (or Salt Dip) - Lt. Mari. (very unusual item; great for 'red eye')
233. 5" x 4" Fostoria Oval Pin Tray - Lt. Mari. (unusual item; flat with nice irid.)
234. 'Sun Punch' Soda Pop Bottle - Mari. (nice color; rare novelty)
235. 7 1/8" TALL MINIATURE HOBNAIL 2 PC. LAMP WITH CLEAR SHADE - MARI. (RARE AND UNUSUAL; BASE HAS GREAT COLOR)
236. Miniature Ball Based Lamp with Chimney - Mari. (nice irid.)
237. Novelty Figural Pipe Match Holder - Lt. Mari. (very scarce and unusual novelty)
238. U.S. Glass Banded Portland Ring Tree - Lt. Mari. (rare item in this pattern; unusual)
239. Heisey Style Bulbous Corset Shaped Perfume Bottle and Stopper - Mari. (nice attractive item with great gold trim)
240. SIGNED HEISEY MELON RIB SPITTOON - LT. MARI. (RARE AND UNUSUAL; NICE LUSTRE AND SIGNED)
241. Westmoreland Estate Handled Mug - Mari. (scarce with light irid.)
242. NOVELTY HIGH HEELED SHOE - LT. MARI. (RARE NOVELTY WITH NICE IRID.)
243. NOVELTY HEELED SHOE 'SOUVENIR OF FAIRVIEW, OHIO' - LT. MARI. (ANOTHER RARE NOVELTY WITH NICE IRID.)
244. Novelty Jewelry Covered Dresser Box - Lt. Mari. (odd item I've never seen; looks like a trunk)
245. NOVELTY FIGURAL DUCK IND. ASHTRAY - DK. MARI. (RARE ITEM WITH GREAT COLOR AND IRID.; NICE)
246. Toothpick Holder 'Souvenir, Deckerville, Mich.' - Mari. (scarce)
247. U.S. Glass 'Portland' (?) Toothpick Holder - Mari. (scarce)
248. U.S. Glass Flared Wide Panel Toothpick Holder - Lt. Mari. (odd item)
249. European Handled Custard Cup with Enamelled Vintage Grape Decor. - Lt. Mari. (unusual with great quality and enamelled decor.)
250. 7 3/4" TALL EUROPEAN HEAVY VINE COLOGNE BOTTLE AND STOPPER - MARI. (VERY SCARCE WITH GREAT COLOR)
251. 4" TALL EUROPEAN HEAVY VINE COVERED DRESSER JAR - MARI. (VERY SCARCE ITEM WITH GREAT COLOR AND IRID.)
252. 3 1/4" Tall European Ranger Round Covered Dresser Jar - Dk. Mari. (scarce item with great color and irid.)
253. 1 3/4" Tall European Ranger Round Covered Powder Jar - Dk. Mari. (a cute little guy with great color and irid.)
254. 2 1/2" TALL EUROPEAN HEAVY VINE SHOT GLASS - MARI. (RARE MINIATURE WITH REALLY NICE IRID.)
255. 2" TALL EUROPEAN DRAPE SHOT GLASS - MARI. (RARE LITTLE GUY WITH NICE IRID.)
256. 2 1/2" TALL EUROPEAN CONE SHAPED CORDIAL WITH GOLD DECAL WITH SILHOUETTE OF LADY - ICE GREEN (REALLY UNUSUAL AND DESIRABLE ITEM; GREAT DECAL)
257. 3" Tall Miniature Double Loop Stemmed Cordial - Mari. (unusual item in an unusual pattern)
258. 3 1/2" Tall U.S. Glass King's Crown Stemmed Wine Glass - Lt. Mari. (scarce)
259. 3 1/2" Tall Signed Heisey Flared Wide Panel Juice Glass - Mari. (scarce with great color)
260. 4 1/4" Tall European Moonprint Stemmed Wine Glass - Mari. (unusual; nice irid.)

#### START OF SECOND SESSION

261. 4 3/4" Tall Signed Heisey Wide Panel Stemmed Wine Glass - Mari. (odd shape with great color and irid.)
262. 3 1/2" Tall Novelty Loving Cup Trophy with Enamelled 'Souv. of Rochester, NY' - Green (rare to find in this color - nice)
263. 3 1/2" Tall Novelty Loving Cup Trophy with Enamelled 'Souv. of Buffalo, NY' - Lt. Mari. (scarce item)
264. 6 1/4" Tall Heisey Style Wide Panel Stemmed Goblet - Lt. Mari. (scarce and nice)
265. WESTMORELAND CHECKERBOARD STEMMED GOBLET - AMY. (RARE AND DESIRABLE; NICE COLOR WITH SILVERY HIGHLIGHTS)
266. 8 1/4" WESTMORELAND SMOOTH RAYS 6 RUFFLED BOWL - AMY. OPAL. (SUPER RARE COLOR FOR THIS ITEM - 1ST I'VE SEEN)
267. 6" Westmoreland 270 Squatty Compote - Teal (scarce color)
268. 6 1/2" TALL PHOENIX STEMMED FLAT CAKE STAND - MARI. / MILK GLASS (RARE AND VERY DESIRABLE SHAPE; NICE)
269. Phoenix Lacy Dewdrop Stemmed Goblet - Mari. / Milk Glass (scarce; nice lustre)
270. PHOENIX LOGANBERRY (GOOSEBERRY) HANDLED WATER PITCHER - MARI. / MILK GLASS (VERY RARE AND VERY DESIRABLE; SUPER MARI. OVERLAY)
271. Phoenix Loganberry Stemmed Goblet - Mari. / Milk Glass (scarce pattern with spotty irid.)
272. Lot of over 20 Hatpins - Dark (some are really different, selling choice)
273. WESTMORELAND CORINTH JACK IN THE PULPIT VASE - BLUE OPAL. (RARE AND DESIRABLE COLOR - REALLY NICE)
274. Westmoreland Corinth Jack in the Pulpit Vase - Mari. / Milk Glass (very scarce and desirable; great irid.)
275. U.S. GLASS COSMOS AND CANE 7 PC. WATER SET - WHITE (EXTREMELY RARE AND VERY DESIRABLE; SUPER COLOR AND IRID.)
276. 8" TALL U.S. GLASS PALM BEACH WHIMSEY SWUNG VASE - WHITE (RARE AND VERY DESIRABLE; SUPER IRID.)
277. 8" WESTMORELAND INTAGLIO DAISY DEEP ROUND FLARED BOWL - BLUE OPAL. (EXTREMELY RARE PATTERN IN A VERY DESIRABLE COLOR)
278. 8" Westmoreland Corinth 6 Ruffled Bowl - Blue Opal. (scarce with nice color and opal.)
279. Imperial Rococco Domed Ruffled Vase - Dk. Mari. (nice color and irid.)
280. IMPERIAL COCKATOO LARGE WALL VASE - SMOKE (ACTUALLY QUITE A RARE ITEM IN THIS COLOR)
281. 16 1/2" Tall Imperial Morning Glory and Drapery Swung Vase - Green (very scarce; nice color with an odd ruffle)
282. 5 3/4" Tall Imperial Morning Glory and Drapery Swung Vase - Dk. Mari. (scarce; really nice color and irid.)
283. 9 1/4" Tall Imperial Beaded Bulls-eye Swung Vase - Amber (rare and really nice; may have a small rough area)
284. 8" TALL X 4 3/4" BASE IMPERIAL ZIPPER LOOP SWUNG VASE - MARI. (RARE AND DESIRABLE WITH REALLY NICE COLOR AND IRID.)
285. Imperial Chateline Handled Water Pitcher - Pur. (rare item with great color and irid.; has 3 chips on collar base)
286. 11 1/4" Imperial Heavy Grape Chop Plate - Amy. (very scarce with a bright silvery / gold irid.)
287. Imperial Little Barrel Perfume - Smoke (very scarce color with great irid.)
288. Imperial Little Barrel Perfume - Green (very scarce and perfect)
289. Imperial Little Barrel Perfume - Dk. Mari. (scarce with great color and irid.)
290. IMPERIAL CORN BOTTLE - SMOKE (VERY SCARCE WITH GREAT COLOR AND IRID.)
291. Imperial Corn Bottle - Green (very scarce with nice color and irid.)
292. Imperial Corn Bottle - Dk. Mari. (very scarce with great color and irid.)
293. Imperial Flute Toothpick Holder - Mari. (nice color and irid.)
294. Imperial Flute Toothpick Holder - Pur. (really nice color and irid.)
295. Imperial Flute Toothpick Holder - Amy. (very scarce base color with great irid.)
296. Imperial Flute Toothpick Holder - Green (scarce)

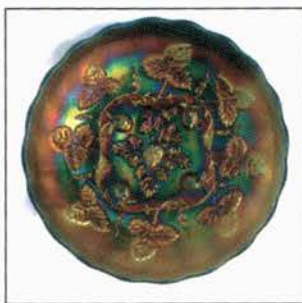
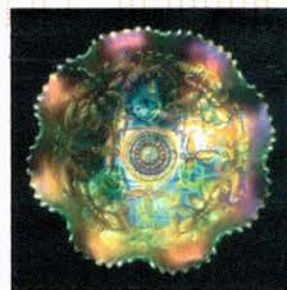
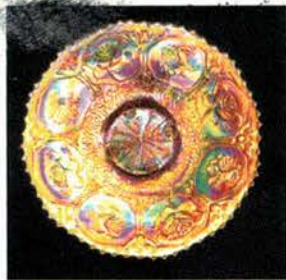


297. Imperial Robin Handled Mug - Mari. (nice color)
298. Pair Imperial Premium Candlesticks - Smoke (scarce pair; nice and well matched)
299. Pair Imperial Premium Candlesticks - Mari. (nicely matched pair)
300. **IMPERIAL DIAMOND AND SUNBURST 8 PC. WINE SET - PUR. (RARE AND VERY DESIRABLE SET; GREAT IRID.; ALL ARE WELL MATCHED)**
301. Imperial Diamond and Sunburst 8 pc. Wine Set - Mari. (scarce set with great color and irid.)
302. Imperial Star and File Wine Decanter and Stopper - Mari. (very scarce item with nice irid.)
303. (3) Imperial Star and File Stemmed Wines - Mari. (selling so much each)
304. Imperial Octagon 8 pc. Wine Set - Dk. Mari. (great color and irid.)
305. **IMPERIAL OCTAGON STEMMED WINE GLASS - AQUA (VERY RARE BASE COLOR - SELDOM SEEN!)**
306. **IMPERIAL OCTAGON LG. STEMMED GOBLET - LT. BLUE / MARI. (VERY RARE BASE COLOR; HAVEN'T HEARD OF MANY)**
307. **IMPERIAL STAR MEDALLION STEMMED GOBLET - SMOKE (ANOTHER RARE BASE COLOR; REALLY TOUGH)**
308. 5 1/2" Tall Imperial Optic and Buttons Stemmed Claret - Mari. (rare size; nice color; signed with Iron Cross)
309. 4 3/4" Tall Imperial Tulip and Cane Wine Glass - Mari. (rare pattern and shape; has an odd tint)
310. **3 3/4" TALL IMPERIAL TULIP AND CANE STEMMED CORDIAL - MARI. (RARE SIZE WITH REALLY NICE COLOR)**
311. Imperial 'Optic Flute' Stemmed Ruffled Spittoon Shaped Compote - Dk. Mari. (rare shape; great color and irid.)
312. Imperial Rococco Ruffled Vase - Dk. Mari. (scarce; nice color)
313. **8" TALL IMPERIAL MINIATURE MORNING GLORY TALL SWUNG VASE - AMBER (NOW THIS IS ONE TOUGH ITEM TO FIND; GREAT COLOR)**
314. **9" IMPERIAL EMBOSSED SCROLL FLAT PLATE - PUR. (VERY POPULAR ITEM WITH TYPICAL GREAT COLOR)**
315. Imperial Octagon Toothpick Holder - Pur. (very rare item in this color; has a chip on the base but find another)
316. Imperial Octagon Toothpick Holder - Mari. (very scarce to find an old one; nice color and irid.)
317. Imperial Colonial Flute Handled Toothpick Holder - Mari. (very scarce item with a faint Iron Cross signature)
318. **IMPERIAL FLUTE HANDLED WATER PITCHER - AQUA / TEAL (EXTREMELY RARE COLOR FOR THIS ITEM; NICE)**
319. Imperial Flute Celery Vase - Pur. (for very rare item with great color and irid.; bruise on inside)
320. **8" TALL X 4 3/4" BASE IMPERIAL ZIPPER LOOP KEROSENE TABLE LAMP - SMOKE (EXTREMELY RARE COLOR TO FIND; GREAT IRID.)**
321. **8 7/8" TALL X 5 1/4" BASE IMPERIAL ZIPPER LOOP KEROSENE TABLE LAMP - DK. MARI. (RARE AND DESIRABLE WITH GREAT COLOR AND IRID.)**
322. **10 1/2" TALL X 6" BASE IMPERIAL ZIPPER LOOP KEROSENE TABLE LAMP - DK. MARI. (RARE LARGE SIZE WITH A WIDE PANEL BOWL AS IT'S SHADE; NICE)**
323. **U.S. GLASS PEACOCK TABLE LAMP - RED (RARE ITEM WITH GREAT IRID.; REALLY NICE)**
324. **LEVAY BY FENTON REGAL IRIS GONE WITH THE WIND LAMP - AQUA (RARE AND DESIRABLE CONTEMPORARY ITEM; NICE IRID.)**
325. **CONSOLIDATED REGAL IRIS GONE WITH THE WIND LAMP - MARI. (VERY RARE AND EXTREMELY DESIRABLE; PERFECT WITH GREAT IRID.)**
- 325A **CONSOLIDATED 'LE FLEUR' TABLE LAMP - MARI. (NEVER SEEN THIS BEFORE; A SCARCE TO RARE ITEM THAT HAS GREAT IRID.)**
326. Dugan Honeycomb Rose Bowl - P. Opal. (nice example with strong color and opal.)
327. Dugan Wreath of Roses Rose Bowl - Mari. (satiny)
328. Dugan Wreath of Roses Tri-Cornered Candy Dish - Amy. (scarce shape; satiny)
329. 8 3/4 - 9" Dugan Twigs Swung Bud Vase - Amy. (satiny finish)
330. Dugan Persian Garden Lg. 6 Ruffled Fruit Bowl and Base - P. Opal. Top; Mari. Base (attractive set; nice opal. on the bowl)
331. 11" Dugan Persian Garden Lg. Ice Cream Bowl - White (scarce with nice color and a frosty finish)
332. 6" Dugan Persian Garden Ind. Ice Cream Bowl - White (nice irid.)
333. 6 3/4" Dugan Persian Garden Plate with Pool of Pearls Ext. - White (irid. is really light)
334. 6 1/4" Dugan Persian Garden Flat Plate - Mari. (satiny finish)
335. 8 1/2" Dugan Fanciful Low Ruffled Plate - P. Opal. (scarce; satiny with opal. on edge)
336. 8 3/4" Dugan Fanciful Low Ruffled Plate - White (scarce with nice irid.)
337. 9" Dugan Fanciful Low Ruffled Plate - Mari. (nice color and satiny finish)
338. Dugan Stippled Petals Domed Ruffled 2 Sided Banana Dish - P. Opal. (nice color and opal.)
339. 5 1/4" Tall x 5 1/2" Wide Dugan Lined Lattice Squatty Flared Vase - Dk. P. Opal. (really desirable; great color, irid. and opal.)
340. **DUGAN FISHERMANS HANDLED MUG - BLUE (EXTREMELY RARE AND VERY DESIRABLE; GREAT DETAIL)**
341. **DUGAN FISHERMANS HANDLED MUG - MARI. (VERY SCARCE WITH NICE COLOR AND DETAIL)**
342. Dugan Fishermans Handled Mug - Pur. (nice color)
343. **DUGAN HERON HANDLED MUG - PUR. (RARE AND DESIRABLE; GREAT COLOR AND IRID.)**
344. Dugan Vintage Grape Covered Powder Jar - Mari. (nice color)
345. Dugan Beaded Shell Handled Mug - Dk. Mari. (very scarce; nice color and irid.)
346. Dugan Beaded Shell Handled Mug - Blue (great color and irid.)
347. Dugan Beaded Shell Handled Mug - Pur. (nice color and irid.)
348. Pastel Swan - Celeste Blue
349. Pastel Swan - Pink
350. **DUGAN PASTEL SWAN - PUR. (VERY SCARCE WITH AVERAGE COLOR AND IRID.)**
351. **DUGAN PASTEL SWAN - MARI. (VERY SCARCE WITH NICE COLOR AND IRID.)**
352. Pastel Swan - Clear / Frosted (unusual item; haven't seen many)
353. Dugan Mary Ann Handled Vase - Dk. Mari. (nice color and detail)
354. Dugan Fishnet Tri-Cornered Crimped Edge Epergne Lily Only - Pur. (tough part if ya need it)
355. **6 1/2" DUGAN WISHBONE AND SPADES FLAT PLATE WITH BASKETWEAVE EXT. - PUR. (VERY SCARCE WITH A NICE SATINY FINISH)**
- 355A **DUGAN FORMAL HATPIN HOLDER - PUR. (RARE AND VERY DESIRABLE; A TOUGH ITEM WITH NICE HIGHLIGHTS)**
356. Dugan Puzzle Round Stemmed 2 Handled Bon Bon - Blue (rare base color; really nice)
357. 9 1/2" Tall Dugan Target Swung Vase - Pur. (scarce item; nice)
358. 6" Tall Dugan Target Squatty Flared Vase - P. Opal. (desirable size with nice opal.)
359. 8 3/4 - 9" Dugan Windflower Low 10 Ruffled Bowl - Black Amy. (not Carnival; odd color to find)
360. Dugan Heavy Iris Tankard Water Pitcher - Mari. (nice item with a bright satiny finish)
361. Dugan Jewelled Heart Tumbler - Dk. Mari. (great color and irid.)
362. Fenton Fontonia Tumbler - Dk. Mari. (great color and irid.)
363. (2) Fenton Kittens Handled Cups - Mari. (selling choice)
364. (2) Fenton Kittens 4 Sided Bowls - Mari. (selling choice)
365. **9 1/2" FENTON LOTUS AND GRAPE FLAT PLATE - AMY. (VERY RARE ITEM WITH SUPER COLOR AND IRID.)**
366. **8 3/4 - 9" FENTON CONCORD GRAPE FLARED PLATE - AMY. (ANOTHER RARE ITEM WITH NICE COLOR AND IRID.)**
367. **10 1/2" FENTON PERSIAN MEDALLION CHOP PLATE - BLUE (VERY SCARCE AND VERY DESIRABLE; NICE IRID.)**
368. 9" Fenton Persian Medallion Flat Plate - Blue (odd item that's iridized only on the exterior)
369. Fenton Birds and Cherries 2 Handled 4 Sided Bon Bon - Blue (one of the better examples I've seen)
370. **6" FENTON "ROOD'S CHOCOLATES - PUEBLO" FLAT ADVERTISING PLATE - AMY. (EXTREMELY RARE AND VERY DESIRABLE WITH SUPER IRID.)**
371. Fenton 2 Row Open Edge 4 Sided Hat - Red (odd ruffle with a couple sharp points)
372. Fenton 2 Row Open Edge 2 Sided Hat - Red (rare color with darker finish)
373. Fenton 2 Row Open Edge 2 Sided Hat - Aqua (scarce base color - sorta nice)
374. Fenton 2 Row Open Edge 2 Sided Hat - Mari. / Vaseline (scarce base color; nice)
375. **9 1/2" FENTON DRAGON AND LOTUS FLAT PLATE - DK. MARI. (RARE AND EXTREMELY DESIRABLE; SUPER IRID. WITH GREAT DETAIL)**
376. **8 1/2" FENTON DRAGON AND LOTUS BOWL WITH 3 IN 1 EDGE - P. OPAL. (VERY SCARCE SHAPE AND COLOR; NICE OPAL.)**
377. 7 1/2" Fenton Dragon and Lotus 8 Ruffled Spatula ftd. Bowl - Lime Green Opal. (scarce great irid. and color; chip on feet)
378. **8 3/4" FENTON DRAGON AND STRAWBERRY LG. ICE CREAM SHAPED BOWL - BLUE (RARE AND DESIRABLE; GREAT COLOR AND IRID.)**
379. 5 1/2" Fenton Pine Cone Ice Cream Shaped Bowl - Blue (nice irid.)
380. **9" FENTON 'SPECTOR'S DEPARTMENT STORE' HEART AND VINE FLARED PLATE - MARI. (VERY RARE AND REALLY DESIRABLE; GREAT COLOR AND DETAIL)**
381. **9" FENTON CHERRY CHAIN LG. ICE CREAM SHAPED BOWL - MARI. / VASELINE (RARE BASE COLOR WITH A NICE SATINY FINISH)**
382. **9 1/2" FENTON VINTAGE GRAPE LG. ICE CREAM SHAPED BOWL - MARI. / VASELINE (ANOTHER REALLY TOUGH BASE COLOR; NICE IRID.)**



383. 7 - 7 1/4" Fenton Peacock and Dahlia 6 Ruffled Bowl - Mari. / Vaseline (quite a rare base color for this item; nice)
384. Fenton Blackberry Spray Jack in the Pulpit Crimped Edge Hat - Lime Green / Mari. (scarce; great overlay and detail)
385. **9 1/2" FENTON PEACOCK AND GRAPE FLAT PLATE - MARI. (VERY SCARCE ITEM; HAS A SATINY FINISH)**
386. 9" Fenton Peacock and Grape Spatula ftd. Flat Plate - Mari. (scarce with a strong satiny finish)
387. 8" Fenton Peacock and Grape Spatula ftd. 8 Ruffled Bowl - Lime Green Opal. (scarce; nice color and opal.; chip on feet)
388. 9" Fenton Peacock at the Urn 8 Ruffled Bowl - Mari. (nice color; edge not filled in)
389. Fenton Peacock at the Urn Flared Goblet Shaped Stemmed Compote - Powder Blue / Mari. (scarce and desirable shape and color)
390. 8 1/2" Fenton Leaf Chain Low 8 Ruffled Bowl - Green (really scarce base color; great color and irid.)
391. 9" Fenton Leaf Chain 6 Ruffled Bowl - White (nice irid.)
392. 8" Fenton Two Flowers Spatula ftd. 8 Ruffled Bowl - Blue (really nice irid.)
393. **7" FENTON ACORN ICE CREAM SHAPED BOWL - RED (RARE ITEM WITH NICE COLOR AND IRID.)**
394. 6" Fenton Stippled Rays Ice Cream Shaped Sauce - Reverse Amberina (scarce item with nice color)
395. **9" TALL FENTON BUTTERFLY AND BERRY SWUNG VASE - RED (RARE AND DESIRABLE; GREAT COLOR - SILVERY IRID.)**
396. **5 3/4 - 6" TALL FENTON STRETCH FTD. 6 RUFFLED VASE - RED (VERY RARE ITEM; ONE OF ONLY TWO I'VE SEEN)**
397. Fenton 'Autumn Oak' Stretch Covered Jelly Jar - Ice Green (very rare item with great color; base is cracked)
398. Fenton Stretch Base to Melon Rib Candy Jar - Tangerine (great color - needs a lid)
399. **FENTON STRETCH DOUBLE DOLPHIN 4 SIDED FTD. COMPOTE - TANGERINE OPAL. (SUPER EXAMPLE; GREAT COLOR WITH OPAL. ON THE TAILS)**
400. **FENTON STRETCH TRIPLE DOLPHIN 8 RUFFLED CONSOLE BOWL - VELVA ROSE. (RARE COLOR TO FIND IN THIS ITEM; NICE)**
401. Fenton Orange Tree ftd. Hatpin Holder - Blue (scarce; nice irid.; tiny chip on one foot)
402. Fenton Blackberry Spray 4 Sided Hat - Aqua / Mari. (scarce; has a couple mold flaws)
403. 6" Tall Fenton April Showers 6 Ruffled Squatty Vase - Amy. (satiny; nice size)
404. 9 3/4" Fenton Little Flowers Lg. Bowl with 3 in 1 Edge - Amy. (satiny; scarce shape)
405. Fenton Paneled Dandelion Tankard Water Pitcher - Mari. (scarce; nice finish)
406. Fenton Ten Mums Tankard Water Pitcher - Blue (great example but cracked)
407. Fenton Stretch Melon Rib Ruffled Rose Bowl - Grecian Gold (scarce; nice)
408. Fenton Stretch Ind. Nut Cup - Grecian Gold (nice color)
409. 8" Tall Fenton Corset Shaped Vase with Etched Daisies - Grecian Gold (scarce with nice etched design)
410. **FENTON STRAWBERRY 2 HANDLED 4 SIDED BON BON WITH STRAWBERRY ON COLLAR BASE - MARI. (RARE VARIATION WITH STRAWBERRY ON BASE)**
411. Fenton Iris Buttermilk Stemmed Goblet - Mari. (nice color)
412. Fenton Sailboat Stemmed Wine Glass - Blue (very scarce color)
413. Fenton Sailboat Stemmed Wine Glass - Mari.
414. Fenton Orange Tree Stemmed Goblet - Blue (scarce color)
415. **FENTON SAILBOAT LG. STEMMED GOBLET - DK. MARI. (RARE ITEM - HAVEN'T SOLD MANY LATELY)**
416. **FENTON WINE AND ROSES STEMMED GOBLET - VASELINE / MARI. (VERY RARE BASE COLOR FOR THIS ITEM; REALLY NICE AND ATTRACTIVE)**
417. Fenton Wine and Roses Stemmed Goblet - Mari.
418. Fenton Miniature Blackberry Stemmed Compote - Amy. (scarce; nice)
419. Fenton Miniature Blackberry Stemmed Compote - Blue (nice satiny irid.)
420. **FENTON DAISY CUT BELL - MARI. (RARE AND DESIRABLE WITH NICE COLOR)**
421. **FENTON ORANGE TREE HANDLED LOVING CUP - GREEN (RARE AND VERY DESIRABLE; NICE BLUE HIGHLIGHTS)**
422. Fenton Orange Tree Handled Loving Cup - Blue (another scarce item with bright highlights)
423. 8 3/4" Fenton Fine Rib Standard Swung Vase - Green (very scarce base color; attractive)
424. 9" Fenton Fine Rib Standard Swung Vase - Blue (nice color)
425. **FENTON KITTENS 4 SIDED TOOTHPICK HOLDER - BLUE (RARE AND DESIRABLE; NICE COLOR AND IRID.)**
426. **FENTON KITTENS 4 SIDED TOOTHPICK HOLDER - BLUE (ANOTHER RARE AND DESIRABLE ITEM; NICE)**
427. **FENTON KITTENS 4 SIDED TOOTHPICK HOLDER WITH 2 SETS OF CATS - BLUE (ANOTHER RARE ITEM; IRID. A BIT SPOTTY IN BASE)**
428. **FENTON KITTENS CEREAL BOWL - BLUE (RARE COLOR; VERY DESIRABLE)**
429. **FENTON KITTENS 4 SIDED BOWL - BLUE (RARE COLOR; VERY DESIRABLE; NICE)**
430. **FENTON KITTENS CUP AND SAUCER - MARI. (SCARCE AND DESIRABLE SET; NICE)**
431. Fenton Kittens Odd Ruffled Toothpick Holder - Mari. (scarce and nice)
432. Fenton Kittens Ruffled Toothpick Holder - Mari. (scarce; nice)
433. Fenton Kittens Ruffled Toothpick Holder - Mari. (scarce; nice)
434. Fenton Kittens Cereal Bowl - Mari. (scarce; nice)
435. Fenton Kittens 2 Sided Banana Dish - Mari. (scarce)
436. Fenton Kittens 6 Ruffled Bowl - Mari. (scarce)
437. Fenton Kittens 4 Ruffled Bowl - Mari. (scarce)
438. Fenton Flowers ftd. Rose Bowl - Amy. (very scarce; nice irid.; good feet)
439. Fenton Orange Tree Standard Flared Mug - Dk. Mari. (nice color)
440. **FENTON ORANGE TREE STANDARD FLARED MUG - RED (RARE COLOR WITH NICE SATINY IRID.)**
441. **FENTON ORANGE TREE STANDARD FLARED MUG - AMBERINA (RARE COLOR WITH NICE SATINY FINISH) -**
442. **FENTON ORANGE TREE STANDARD FLARED MUG - AQUA (VERY RARE AND DESIRABLE BASE COLOR; NICE)**
443. Fenton Orange Tree Standard Flared Mug - Lime Green / Mari. (scarce base color; nice)
444. **FENTON ORANGE TREE STANDARD FLARED MUG - DK. MARI. / VASELINE (REALLY DARK OVERLAY ON A BRIGHT BASE COLOR)**
445. Fenton Orange Tree Standard Flared Mug - Mari. / Vaseline (scarce with a nice pastel irid.)
446. Fenton Orange Tree Standard Flared Mug - Amber (very scarce base color; nice)
447. Fenton Orange Tree Standard Flared Mug - Odd Blue (cobalt with the teal base finish)
448. Fenton Orange Tree Standard Flared Mug - Blue / Mari. (odd tint)
449. **FENTON ORANGE TREE STANDARD FLARED MUG - BLACK AMY. (CAN'T SEE THROUGH IT; RARE; SILVERY)**
450. **6 1/4" FENTON PERSIAN MEDALLION FLAT PLATE - BLACK AMY. (RARE ITEM IN THIS COLOR; HAS A SATINY FINISH)**
451. **6 1/2" FENTON PINE CONE FLAT PLATE WITH paneled EXT. - GREEN (VERY SCARCE WITH A STRONG SATINY FINISH)**
452. 6 1/2" Fenton Sailboat Flat Plate - Mari. (rare item; nice detail with average irid.)
453. 7" Fenton Stippled Rays Flat Plate - Mari. (nice color)
454. 7 1/2" Fenton Horsehead Medallion Flat Plate - Mari. (scarce; nice color)
455. **9 1/2" FENTON CAPTIVE ROSE FLAT PLATE - GREEN (RARE ITEM; HAS A SUBDUED IRID.; NICE)**
456. 8 1/2" Fenton Captive Rose Bowl with 3 in 1 Edge - Green (great shape with bright highlights)
457. 8 1/2 - 3/4" Fenton Orange Tree with Trunk Bowl with 3 in 1 Edge - Blue (nice shape with really nice irid.)
458. 8 1/2" Fenton Orange Tree 6 Ruffled Bowl - White (nice irid.)
459. **16 1/4" TALL x 5 1/4" BASE FENTON RUSTIC SWUNG FUNERAL VASE - SORTA PASTEL MARI. (SUPER, SUPER IRID.; HAS A BRUISE IN BASE)**
- 459A **18" TALL X 5 1/8" BASE FENTON RUSTIC SWUNG FUNERAL VASE - AMY. (VERY DESIRABLE WITH VERY BRIGHT IRID.; REALLY NICE)**
- 459B **18" TALL X 5 1/8" BASE FENTON RUSTIC SWUNG FUNERAL VASE - BLUE (ANOTHER DESIRABLE ITEM WITH BRIGHT IRID.)**
460. **FENTON paneled DANDELION TANKARD WATER PITCHER - BLUE (VERY SCARCE; ONE OF THE NICER EXAMPLES)**
461. 9 1/2" Fenton Peacock at the Urn Plate - Blue (very scarce with nice color and detail)
462. 9 1/2" Fenton Peacock at the Urn Plate - Mari. (very scarce; sorta darker and desirable)
463. 8 1/2" Fenton Dragon and Lotus Ice Cream Shaped Bowl - Amber (rare base color with a nice satiny finish)
464. 10" Tall Fenton Rustic Standard Swung Vase with Crimped Edge - Blue (really nice)
465. Fenton Blackberry 2 Row Open Edge 6 Ruffled Hat - Green (scarce with bright color and irid.)
466. Fenton Blackberry 2 Row Open Edge 6 Ruffled Hat - Amy. (very scarce with bright color and irid.)
467. Fenton 2 Row Open Edge Jack in the Pulpit Hat - Red (very scarce with nice color)
468. Fenton 2 Row Open Edge Jack in the Pulpit Hat - Odd Green (really nice base color; a toughie!)
469. Fenton 2 Row Open Edge Jack in the Pulpit Hat - Mari. / Vaseline (scarce base color)
470. Fenton 2 Row Open Edge Jack in the Pulpit Hat - Blue (satiny)
471. Fenton 2 Row Open Edge 6 Ruffled Hat - Mari.





**Burns Auction Service**

P.O. Box 608  
Bath, New York 14810

First Class  
US Postage  
**PAID**  
Permit No. 7  
Hammondsport, NY

**2002 Lincoln Land  
Convention Auction!**



**LEE MARKLEY  
BOX 306  
MENTONE IN 46539**

46539+0306 04

