



BURNS

AUCTION SERVICE

Keystone Carnival Glass Club Convention Auction

Friday, May 24, 2002

1:00 pm; preview 11:00 am (Lots 1 - 180)

Saturday, May 25, 2002

10:30 am; preview 8:00 am (Lots 181 - end)

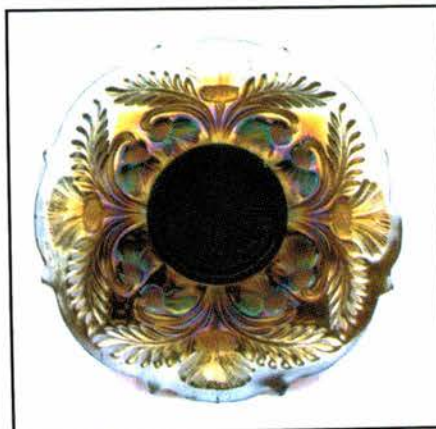
at the

Holiday Inn - Morgantown

6170 Morgantown Rd.
Morgantown, PA 19543
(Exit 22 off PA Turnpike)

Reservations: 1-800-339-0264

William E. Richards III, Auctioneer • PA License #AU-002580L



Well, we're all of a sudden entering the busy time of the year. The next month or so will go in the blink of an eye and will feature some super auctions by yours truly. We'll start off with the Keystone Carnival Glass Club Convention Auction in Morgantown, PA. This year's selection of glass comes from New England, Manhattan, Seattle and the bulk from the Curtis Knight collection of Atlanta, GA. We'll have 180 lots on Friday starting at 1:00 pm followed by the banquet Friday evening. Now Saturday will be busy - selling the rest of the 440 lots plus a number of damaged and 'as is' items sold immediately following (a lot of pitchers, a N G & C Master Punch set in purple with a good base and 12 cups, plus much more). So, be sure to hang around as we have all Saturday to finish up and it should be a good time.

The Holiday Inn of Morgantown, PA will host the event. The facility is located off Exit 22 of the PA Turnpike and is 1 exit east (approx. 15 minutes) of the Adamstown Flea Market area. Make your reservations ASAP and come spend the weekend with the Keystoneers.

For further info on the convention contact Pres. Dave Sharp at (717) 626-8231; for reservations call the motel direct at 1-800-339-0264, or for info on the auction or if we can be of any assistance call or write:

Burns Auction Service

Tom Burns
P.O. Box 608
Bath, New York 14810
(607) 776-7942 Cell: 731-9302

Bill Richards
44 Water Street, Poland OH 44514
(330) 757-2001
FAX (330) 757-4917

Bill Richards III
2253 Country Lane
Poland, OH 44514
(330) 755-2620

Mail Bids honored under the following conditions:

1. No deposit required. Bidders will take full responsibility to honor any and all bids we execute for them. Payment in full plus postage and handling required after notification and before we ship any item to them.
2. Items are bid on in perfect condition with average or above average iridescence OR as listed in the brochures. Bids will not be carried out when damage on an item has been found during the auction. **PEOPLE PRESENT AT THE AUCTION ARE RESPONSIBLE FOR FINDING ANY PIN-HEADS, WEAR, SPOTTINESS, MANUFACTURER'S DEFECTS OR ANY OTHER MINOR FLAWS, ETC.**
3. Successful bidders will be notified by collect call from the auctioneer **SO BE SURE TO INCLUDE PHONE NUMBER.**
4. Phone inquiries about the glass or any other questions are welcome.
5. If you have some other person at the auction bidding for you, they must pay for the item before taking it.
6. Any terms or conditions given the day of the auction will supersede any previously published information.
7. Mail, e-mail, fax and phone bids are due by Wednesday, May 22, 2002.

Visit our website at: <http://www.woodsland.com/burnsauction/>

- | | |
|---|--|
| ___ 1. Westmoreland Bo Peep Handled Mug - Mari. (scarce) | ___ 28. Dugan Beaded Shell Handled Mug - Mari. (rare color; nice detail and irid.) |
| ___ 2. N Singing Bird Handled Mug - Green (scarce; nice color) | ___ 29. Dugan Harvest Flower Tumbler - Mari. (scarce item) |
| ___ 3. Fenton Garland ftd. Rose Bowl - Dk. Mari. (super color and irid.) | ___ 30. 5" TALL FOSTORIA BROCAIDED ACORNS FTD. GLASS - LAVENDER (RARE AND VERY DESIRABLE; SUPER ITEM IN THIS COLOR) |
| ___ 4. 9 1/2" M'burg Rays and Ribbons 6 Ruffled Bowl - Lt. Mari. (satiny) | ___ 31. FOSTORIA BROCAIDED ACORN LG. STEMMED CHAMPAGNE - ICE BLUE (VERY SCARCE AND VERY DESIRABLE; SUPER ITEM) |
| ___ 5. M'BURG MARILYN HANDLED WATER PITCHER - DK. MARI. (RARE AND DESIRABLE WITH SUPER COLOR AND IRID.) | ___ 32. U.S. Glass Flute Tumbler - Cran. Flash (very scarce item) |
| ___ 6. N Good Luck 8 Ruffled Bowl with Ribbed Ext. - Blue / Elec. Blue (very scarce and desirable; nice irid.) | ___ 33. PHOENIX LACY DEWDROP TUMBLER - PEARLIZED MILK GLASS - RARE AND DESIRABLE WITH A NICE PEARLIZED FINISH) |
| ___ 7. Fenton G & C ftd. Ruffled Fruit Bowl with Persian Medallion Int. - Mari. (nice color) | ___ 34. DEPRESSION ERA STIPPLED STRAWBERRY TUMBLER - MARI. (QUITE A SCARCE ITEM - PRETTY NICE DETAIL) |
| ___ 8. Imperial Freehand Bulbous Based Miniature Lamp - Mari. (unusual item; nice) | ___ 35. U.S. GLASS WHITE OAK TUMBLER - MARI. (RARE AND DESIRABLE; PERFECT WITH NICE IRID.) |
| ___ 9. M'burg Marilyn Tumbler - Amy. (scarce; silvery irid.) | ___ 36. U.S. GLASS COSMOS AND CANE TUMBLER WITH LYNCHBURG, VA. ADVERTISING - HONEY AMBER (RARE ADVERTISING ITEM; NICE IRID.) |
| ___ 10. M'BURG PERFECTION TUMBLER - GREEN (RARE AND VERY DESIRABLE; PERFECT WITH NICE IRID.) | ___ 37. U.S. Glass Cosmos and Cane Tumbler - Dk. Mari. (super color for this item; nice) |
| ___ 11. M'BURG HANGING CHERRIES TUMBLER WITH MANUF. GROUND BASE - AMY. (VERY SCARCE WITH ATTRACTIVE SATINY IRID.) | ___ 38. U.S. Glass Palm Beach Tumbler - Honey Amber (very scarce and nice; has manuf. ground base) |
| ___ 12. M'burg Diamond Tumbler - Green (scarce; nice irid.) | ___ 39. European Ranger Tumbler - Dk. Mari. (super bright color and irid.; excellent) |
| ___ 13. M'burg Diamond Tumbler - Dk. Mari. (super irid.) | ___ 40. N ROSE SHOW 8 RUFFLED BOWL - ELEC. BLUE (RARE AND VERY DESIRABLE; A SUPER ITEM) |
| ___ 14. M'burg Feather and Heart tumbler with Etched "Asbury Park 1911" - Mari. (scarce; nice color) | ___ 41. N ROSE SHOW 8 RUFFLED BOWL - ICE GREEN (RARE AND VERY DESIRABLE WITH SUPER ITEM) |
| ___ 15. M'BURG FEATHER AND HEART TUMBLER - AMY. (VERY SCARCE AND DESIRABLE; NICE IRID.) | ___ 42. N ROSE SHOW 8 RUFFLED BOWL - ICE BLUE (ANOTHER RARE AND VERY DESIRABLE ITEM; REALLY NICE) |
| ___ 16. Dugan Peacock at the Fountain Tumbler - Blue (scarce; nice color) | ___ 43. N ROSE SHOW 8 RUFFLED BOWL - AQUA OPAL. (RARE AND HAS A SUPER PASTEL FINISH; REALLY NICE) |
| ___ 17. Dugan Peacock at the Fountain Tumbler - Mari. (satiny; nice) | ___ 44. N Rose Show 8 Ruffled Bowl - White (very scarce and desirable; nice irid.) |
| ___ 18. Dugan Stork in the Rushes Tumbler with Lattice Band - Blue (scarce; nice irid.) | ___ 45. N Rose Show 8 Ruffled Bowl - Blue Opal. (not Carnival; nice color and opal.) |
| ___ 19. Dugan Grapevine Lattice Tumbler - Dk. Mari. (super irid.) | ___ 46. 8 - 8 1/2" Fenton Stag and Holly Round Flared Spatula ftd. Bowl - Green (very scarce with super color and irid.) |
| ___ 20. DUGAN CIRCLE SCROLL TUMBLER - PUR. (VERY RARE AND VERY DESIRABLE; SUPER SATINY) | ___ 47. 7 1/2" Fenton Horsehead Medallion ftd. 8 Ruffled Bowl - Green (very scarce in this color; nice irid.) |
| ___ 21. DUGAN QUILL TUMBLER - PUR. (RARE ITEM; PERFECT WITH AVERAGE IRID.) | |
| ___ 22. Dugan Dahlia Tumbler - Dk. Mari. (super irid.; nice) | |
| ___ 23. Dugan Maple Leaf Tumbler - Pur. (nice irid.) | |
| ___ 24. Dugan Maple Leaf Tumbler - Dk. Mari. (absolutely super item) | |
| ___ 25. DUGAN FISHERMANS MUG - MARI. (VERY SCARCE WITH GREAT DETAIL) | |
| ___ 26. Dugan Stork in the Rushes Handled Mug - Amy. (scarce item in this color) | |
| ___ 27. Dugan Beaded Shell Handled Mug, Enameled "Souvenir of Fair" - Blue (nice irid.) | |

48. Fenton Three Fruits 12 Sided Plate - Dk. Mari. (nice example for this item)
49. **FENTON BLACKBERRY SPRAY 6 RUFFLED HAT - AQUA OPAL. (RARE AND VERY DESIRABLE WITH GREAT COLOR AND OPAL.)**
50. **FENTON HOLLY 8 RUFFLED BOWL - RED (RARE AND VERY DESIRABLE; REALLY RED WITH GOLDISH IRID.)**
51. **N POPPY SHOW 8 RUFFLED BOWL - PUR. (RARE AND DESIRABLE WITH NICE MULTI-COLORED IRID.)**
52. **N POPPY SHOW 8 RUFFLED BOWL - BLUE / ELEC. BLUE (RARE AND DESIRABLE WITH NICE BLUE HIGHLIGHTS)**
53. N G & C Shot Glass - Pur. (very scarce; perfect with nice irid.)
54. N Singing Bird Handled Mug - Pur. (nice irid.)
55. **N DANDELION / KNIGHTS TEMPLAR ADV. HANDLED MUG - MARI. (VERY SCARCE AND VERY DESIRABLE WITH NICE IRID.)**
56. N Grape and Gothic Arches Tumbler - Elec. Blue (super irid.; really nice)
57. N Grape and Gothic Arches Tumbler - Custard / Blue Stain (actually quite a scarce item; not iridized)
58. N Singing Birds Tumbler - Green (nice color and irid.)
59. N Raspberry Tumbler - Green (really nice)
60. **N WISTERIA TUMBLER - LIME ICE GREEN (EXTREMELY RARE AND VERY DESIRABLE; ONLY 6 KNOWN AND THIS ONE'S FOR SALE!)**
61. **N ORIENTAL POPPY TUMBLER - ICE BLUE (RARE AND VERY ATTRACTIVE WITH GREAT IRID.)**
62. N Oriental Poppy Tumbler - White (scarce with nice irid.)
63. N Oriental Poppy Tumbler - Mari. (nice color and irid.)
64. N Acorn Burr Tumbler - Green (nice irid.)
65. **N DANDELION TUMBLER - HOREHOUND / SMOKE (RARE COLOR VARIATION WITH NICE IRID.)**
66. N Dandelion Tumbler - Dk. Mari. (really nice irid.)
67. **N PEACOCK AT THE FOUNTAIN TUMBLER - ICE BLUE (RARE AND VERY DESIRABLE; REALLY NICE COLOR AND IRID.)**
68. N G & C Tankard Tumbler - Green (rare item; tough to find; nice irid.)
69. N Barbella Tumbler with Enam. Apple Blossom Decor. - Blue (a very scarce item in this pattern and color)
70. **N INTERIOR POINSETTIA TUMBLER - MARI. (VERY RARE AND VERY DESIRABLE; A SUPER EXAMPLE)**
71. **N CONCAVE DIAMOND STRETCH TUMBLER - VASELINE (RARE ITEM; GREAT COLOR AND NICE IRID.)**
72. **N CONCAVE DIAMOND STRETCH GUEST SET INSERT TUMBLER - OLIVE GREEN (A VERY RARE ITEM IF SOMEONE NEEDS IT; NICE)**
73. Depression Era Juice Glass with enam. Blue Willow Decor. - Lt. Mari.
74. Depression Era Juice Glass with enam. Courting Scene Decor. - Lt. Mari.
75. **EUROPEAN MARY GREGORY STEMMED WINE GLASS - CUPID IN THE CLOUDS - LT. MARI. (ATTRACTIVE AND DESIRABLE ITEM)**
76. Pair European Mary Gregory Tankard Tumblers with One Girl and One Boy - Lt. Mari. (mirror images; a neat set; selling as a pair)
77. German Cordial with Enam. "Wirth's Hofbrau 07 / 08 - Prov. R.D." - Lt. Mari. (cute miniature item)
78. Schlitz Beer Glass - Lt. Mari. (scarce item; fill 'er up for me!)
79. Fenton Orange Tree Standard Flared Mug - Lt. Amy. / Mari. (scarce base color with nice detail and irid.)
80. Fenton Orange Tree Standard Flared Mug - Red (great color; has a fold flaw; silvery irid.)
- 80A **FENTON WREATH OF ROSES / VINTAGE INT. 8 PC. PUNCH SET - AMY. (RARE AND VERY DESIRABLE; HAS WELL MATCHED BRIGHT SATINY IRID.; NICE)**
81. **FENTON FLUFFY PEACOCK TUMBLER - GREEN (VERY SCARCE AND NICE; TOUGH TO FIND)**
82. Enam. (pattern?) Tumbler - Dk. Mari. (nice item; I'm not sure of the pattern)
83. Fenton Enam. Little Daisies Tumbler - Lt. Mari. (scarce item; nice decor.)
84. Fenton Enam. Crocus Tumbler - Ice Green (scarce item; nice decor.)
85. **FENTON LILY OF THE VALLEY TUMBLER - MARI. (RARE AND VERY DESIRABLE; SUPER COLOR AND IRID.)**
86. **FENTON BLUEBERRY TUMBLER - WHITE (RARE IN THIS COLOR; FROSTY WITH NICE IRID.)**
87. Fenton Floral and Grape Tumbler - White (very scarce and desirable; super irid.)
88. Fenton Orange Tree Orchard Tumbler - Blue (scarce with nice color and irid.)
89. Fenton Butterfly and Fern Tumbler with Collar Base - Blue (scarce; satiny)
90. Fenton Fentonia Tumbler - Blue (scarce; nice color and irid.)
91. Fenton Blackberry Block Tumbler - Mari. (scarce; nice color and irid.)
92. Fenton Lattice and Grape Tumbler - Blue (nice irid.)
93. Fenton Banquet Tumbler - Mari. (nice irid.)
94. Imperial Paneled Handled Mug - Clam. (signed Imperial Iron Cross with great irid.)
95. **IMPERIAL OCTAGON LG. SIZE TUMBLER - PUR. (RARE AND DESIRABLE; TOUGH TO FIND PERFECT)**
96. Imperial Octagon Lg. Size Tumbler - Dk. Mari. (nice color)
97. Imperial Octagon Tumbler with Manuf. Ground Base - Dk. Mari. (super item)
98. **IMPERIAL OCTAGON STEMMED WINE GLASS - PUR. (RARE AND DESIRABLE ITEM WITH GREAT IRID.; NICE)**
99. Imperial Diamond Sunburst Stemmed Wine Glass - Pur. (scarce; nice irid.)
100. **IMPERIAL FASHION TUMBLER - SMOKE (VERY SCARCE; A NICE EXAMPLE WITH YELLOW HIGHLIGHTS)**
101. Imperial Grape Stemmed Wine Glass - Smoke (scarce item; tough to find)
102. Imperial Grape Stemmed Wine Glass - Pur. (nice color and irid.)
103. Imperial Grape Stemmed Wine Glass - Clam. (nice irid.)
104. Imperial Colonial Flute Stretch Tankard Tumbler - White (scarce item; nice frosty)
105. **IMPERIAL OCTAGON STEMMED CORDIAL - DK. MARI. (RARE AND DESIRABLE; SUPER COLOR AND IRID.; REALLY TOUGH TO FIND)**
106. **IMPERIAL GRAPE TUMBLER WITH ORIGINAL GOLD BAND - DK. MARI. (NOW THIS IS DIFFERENT AND THE GOLD IS ORIGINAL!)**
107. Imperial Star Medallion Tankard Tumbler - Dk. Mari. (nice color and irid.)
108. Imperial File Tumbler - Mari. (rare and desirable with nice irid.)
109. Imperial Flute Tumbler - Pur. (rare with really nice irid.)
110. Imperial 474 Tumbler - Dk. Mari. (rare and dark; tough to find)
111. Imperial Lustre Rose Tumbler - Pur. (scarce with really nice irid.)
112. 1909 Louisville Shriner's Champagne Glass - Clear (scarce; nice)
113. 1910 New Orleans Shriners Champagne - Clear (scarce; nice)
114. 1911 Rochester, NY Shriners Champagne Glass - Clear (scarce; nice)
115. **IMPERIAL COLONIAL LADY 4 CORNERED VASE - DK. MARI. (RARE AND DESIRABLE WITH NICE BRIGHT IRID.)**
116. Imperial Rococco Vase - Smoke (very scarce and appears to be perfect)
117. 6" Imperial Miniature Morning Glory Odd Swung Vase - Smoke (has an odd swing that makes it desirable)
118. 12" Imperial Ripple Standard Swung Vase - Amber (scarce base color; may have some peeling)
119. 9" Imperial Grape Low 8 Ruffled Bowl - Clam. (super irid.)
120. **IMPERIAL SIX SIDED CANDLESTICK - PUR. (RARE ITEM; HAS BRIGHT HIGHLIGHTS; IRID. A BIT LIGHT AT PLACES)**
121. Imperial Lustre Rose Handled Spooner - Amber (very scarce item in this color; a toughie)
122. Imperial File Spooner - Mari. (scarce item with nice irid.)
123. Depression Era Squatty Mellon Ribbed Candlesticks - Mari. (odd pair; not sure of pattern name)
124. **WESTMORELAND ORNAMENTAL BUTTERFLY - LT. MARI. (NOT AS RARE AS THE FENTON VERSION BUT STILL SCARCE)**
125. **EUROPEAN TORNADO VASE WITH POLISHED PONTIL - MARI. / GREEN (RARE AND VERY DESIRABLE; PERFECT WITH NICE COLOR; HAS GREENISH APPLIED TORNADOS)**
126. **N TORNADO STANDARD SIZE TRI-CORNERED VASE - PUR. (RARE AND DESIRABLE; NICE COLOR AND IRID.; PERFECT)**
127. **N CORN VASE WITH PLAIN BASE - GREEN (RARE AND DESIRABLE VARIATION WITH NICE IRID.)**
128. Pair 8" N Florentine Style Stretch Candlesticks - Russet Green (scarce with nice color and irid.)
129. N Stretch Covered Paneled Candy Dish - Russet Green (scarce with nice color and irid.)
130. **N GRAPE AND GOTHIC ARCHES 7 PC. WATER SET - ELEC. BLUE (RARE AND VERY DESIRABLE; VERY ATTRACTIVE)**
- 130A N Heart and Flowers Ruffled Bowl with Ribbed Ext. - Ice Green (rare with nice irid.; has small flake on inside edge)

- ___ 131. **N HEARTS AND FLOWERS STEMMED 6 RUFFLED COMPOTE - AQUA OPAL. (RARE AND ALWAYS DESIRABLE; NICE OPAL. AND IRID.)**
- ___ 132. N Hearts and Flowers Stemmed 6 Ruffled Compote - White (scarce with nice color and average irid.)
- ___ 133. **N PEACOCKS PLATE WITH RIBBED EXT. - ICE GREEN (VERY SCARCE WITH EXCELLENT IRID.)**
- ___ 134. N Acorn Burr Handled Spooner - Amy. (scarce with nice irid.)
- ___ 135. **N BEADED CABLE FTD. RUFFLED ROSE BOWL - AQUA OPAL. (VERY SCARCE AND ATTRACTIVE WITH NICE OPAL.)**
- ___ 136. N Beaded Cable ftd. Ruffled Rose Bowl with Ribbed Ext. - Amy. (has satiny irid.)
- ___ 137. **N DRAPERY RUFFLED ROSE BOWL - AQUA OPAL. (VERY SCARCE AND VERY DESIRABLE; NICE OPAL.)**
- ___ 138. N Fine Cut and Roses ftd. Rose Bowl with Fancy Int. - Pur. (scarce with the interior pattern; may have a pinhead)
- ___ 139. N Raspberry ftd. Handled Gravy Boat - Pur. (scarce novelty item with nice irid. and pretty good feet)
- ___ 140. **N LEAF AND BEADS FTD. ROSE BOWL - AQUA OPAL. (RARE AND DESIRABLE WITH NICE IRID. AND OPAL.)**
- ___ 141. N Leaf and Beads ftd. Rose Bowl - Blue (scarce; nice base color with elec. blue highlights)
- ___ 142. N Leaf and Beads ftd. Rose Bowl with Floral Int. - Mari. (scarce with interior pattern; nice irid.)
- ___ 143. N Star of David and Bows Domed 8 Ruffled Bowl - Amy. (nice satiny finish)
- ___ 144. (2) N G & C Tumblers - Pur. (selling choice; nice irid.)
- ___ 145. N Three Fruits Medallion ftd. Ruffled Bowl with Meander Int. - Amy. (scarce; nice irid.)
- ___ 146. N Peacock at the Fountain Ind. Berry Bowl - Mari. (scarce to find)
- ___ 147. (2) Cambridge Inverted Feather Stemmed Parfaits - Dk. Mari. (selling choice; both are nice)
- ___ 148. M'burg Peacock Tail Variant 6 Ruffled Compote - Amy. (super radium finish - a real keeper)
- ___ 149. 7 1/2" M'burg Blackberry Wreath 6 Ruffled Bowl - Green (satiny finish)
- ___ 150. **M'BURG HOBNAIL SPITTOON - DK. MARI. (RARE AND VERY DESIRABLE; NICE COLOR AND IRID. - REALLY NICE)**
- ___ 151. **M'BURG SWIRL HOBNAIL ROSE BOWL - PUR. (VERY SCARCE AND VERY ATTRACTIVE; NICE)**
- ___ 152. **6" M'BURG "THE GREAT HOUSE OF ISAAC BENESCH & SONS" ADVERTISING 6 RUFFLED BOWL - AMY. (VERY SCARCE AND VERY DESIRABLE ADVERTISING ITEM)**
- ___ 153. 8" M'burg Blackberry Wreath Ice Cream Shaped Bowl - Green (super radium finish; really nice)
- ___ 154. M'burg Trout and Fly Bowl with 3 in 1 Edge - Mari. (very scarce and desirable with a nice satiny finish)
- ___ 155. **M'BURG MANY STARS (6 POINTED) 6 RUFFLED BOWL - AMY. (RARE AND DESIRABLE WITH A NICE RADIUM FINISH)**
- ___ 156. 8 1/2" M'burg Grape Wreath Variant 6 Ruffled Bowl - Amy. (radium and attractive; nice)
- ___ 157. (3) Dugan S Repeat Handled Punch Cups - Pur. (selling choice; has some nice irid.)
- ___ 158. 10 - 10 1/2" Tall Dugan Pulled Loop Swung Vase - Blue (rare base color for this pattern)
- ___ 159. 8 1/2" Tall Dugan Vining Twigs Swung Vase - Pur. (scarce; satiny)
- ___ 160. **DUGAN LETTERED BROOKLYN BRIDGE 6 RUFFLED BOWL - DK. MARI. (RARE AND DESIRABLE; HAS A RADIUM FINISH)**
- ___ 161. **DUGAN STORK IN THE RUSHES COVERED BUTTER DISH - MARI. (ACTUALLY QUITE A RARE ITEM AND IT'S AN OLD ONE)**
- ___ 162. Dugan Paneled Cherries 10 Ruffled ftd. Bowl - Amy. (satiny and nice)
- ___ 163. 6 1/2 - 7" Dugan Fishscale Low 8 Ruffled Bowl / Plate - P. Opal. (super, super opal.; quite nice)
- ___ 164. Dugan Starfish Stemmed 8 Ruffled Compote - P. Opal. (nice color and opal.; attractive)
- ___ 165. **DUGAN NAUTILUS NOVELTY CREAMER - PUR. (VERY SCARCE AND DESIRABLE; PRETTY NICE IRID.)**
- ___ 166. **DUGAN NAUTILUS NOVELTY OPEN SUGAR - PUR. (SCARCE WITH NICE COLOR AND IRID.)**
- ___ 167. 9" Dugan Apple Blossom Twigs Flared Plate - P. Opal. (scarce with nice opal. and irid.)
- ___ 168. 6 1/2" Dugan Wishbone and Spades Flat Plate - Amy. (scarce item with a satiny finish)
- ___ 169. Dugan Persian Garden 10 Ruffled Fruit Bowl Top Only - Mari. (sorta radium and very scarce)
- ___ 170. Fenton #351 Stretch Candlestick - Celeste Blue (scarce with great color and irid.)
- ___ 171. N Paneled Stretch Candlestick - Vaseline (super color)
- ___ 172. Fenton Portly Single Stretch Candlestick - White (scarce item; nice)
- ___ 173. **PAIR FENTON CORNUCOPIA STRETCH CANDLESTICKS - WHITE (RARE AND DESIRABLE PAIR; SUPER IRID.)**
- ___ 174. Pair 10 1/2" Tall Vineland Florentine Style Candlesticks - Pur. (scarce pair; nice size and color)
- ___ 175. 10 1/2" Fenton Stag and Holly Lg. Ball ftd. Ice Cream Shaped Bowl - Blue (scarce with nice color and irid.)
- ___ 176. **9 1/4" FENTON RIBBON TIE LOW RUFFLED PLATE - BLUE (VERY SCARCE; NICE COLOR AND IRID.)**
- ___ 177. Fenton 2 Row Open Edge Jack in the Pulpit Hat - Aqua (a very attractive item in both shape and color)
- ___ 178. Fenton Kittens Ruffled Toothpick Holder - Mari. (scarce with nice color and irid.)
- ___ 179. Fenton Orange Tree Covered Powder Jar - Dk. Mari. (super color and irid.)
- ___ 180. Fenton Strawberry 2 Handled Bon Bon - Mari. / Vaseline (very scarce with a very attractive base color)

START OF SECOND SESSION

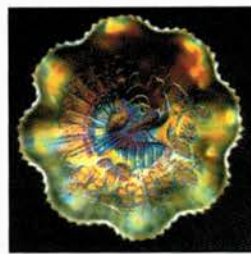
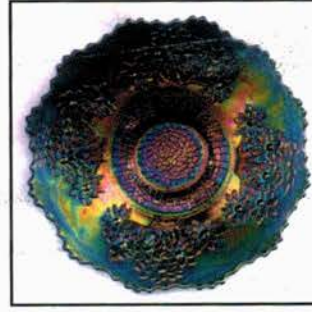
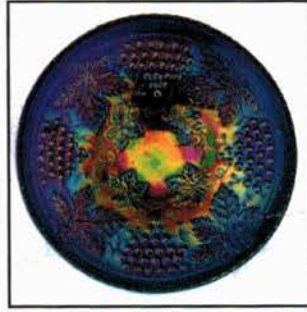
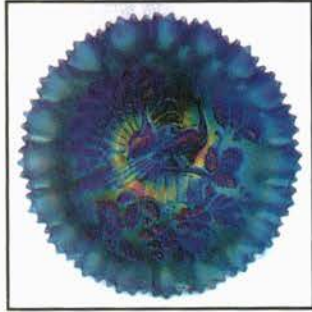
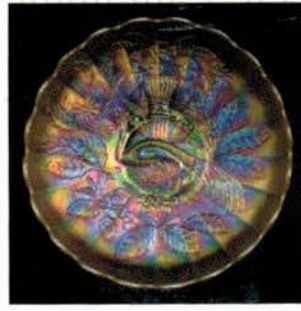
- ___ 181. 8" Fenton Dragon and Lotus Ice Cream Shaped Bowl - Mari. (nice satiny finish)
- ___ 182. Fenton Butterfly and Berry ftd. Spooner - Mari. (nice color)
- ___ 183. 7 1/2" Fenton Butterfly and Berry Swung Vase - Blue (nice satiny finish)
- ___ 184. Fenton Butterfly and Berry Tumbler - Blue (scarce; satiny)
- ___ 185. Fenton Sailboats Stemmed Wine Glass - Blue (very scarce base color; tough to find)
- ___ 186. Fenton Iris Buttermilk Stemmed Goblet - Mari. (nice satiny finish)
- ___ 187. Fenton Lattice and Grape 7 pc. Tankard Water Set - Dk. Mari. (dark and attractive set)
- ___ 188. 17 1/4" Fenton Rustic Mid Size Swung Vase - Amy. (scarce with nice color and irid.)
- ___ 189. 11" Fenton Rustic Standard Swung Vase - Amy. (nice irid.)
- ___ 190. 9 1/2" Fenton Knotted Beads Swung Vase - Blue (nice color and irid.)
- ___ 191. 11 1/2" Fenton Plume Panels Swung Vase - Blue (really nice color and irid.)
- ___ 192. 9" Fenton Diamond Point Columns Swung Vase - Green (scarce base color with a satiny finish)
- ___ 193. (2) Imperial Flute Toothpick Holders - Pur. (1 rough; selling choice)
- ___ 194. Imperial Flute Toothpick Holder - Mari. (pinhead)
- ___ 195. **(2) 12 - 13" TALL IMPERIAL BEADED BULLSEYE SWUNG VASES - PUR. (SELLING CHOICE; BOTH REALLY NICE)**
- ___ 196. Imperial Grape Water Carafe - Pur. (a beauty; scarce)
- ___ 197. (4) 6 1/2" Imperial Grape Flat Plates - Mari. (nice; selling choice)
- ___ 198. (5) Imperial File Tumblers - Dk. Mari. (rare and desirable; selling choice)
- ___ 199. Imperial Wide Panel Stemmed Goblet - Dk. Mari.
- ___ 200. **IMPERIAL POPPY SHOW LAMP - DK. MARI. (EXTREMELY RARE AND DESIRABLE; SUPER COLOR AND IRID.)**
- ___ 201. **IMPERIAL POPPY SHOW CANDLE LAMP - PUR. (RARE ITEM WITH A LAMP BASE CONVERTED TO CANDLE; SUPER RARE - 1 OF 2 KNOWN)**
- ___ 202. Imperial Poppy Show Candle Lamp - Pur. (this is the second known example; it has a crack but go find 'em)
- ___ 203. 14 - 15" Tall Imperial Morning Glory Swung Funeral Vase - Dk. Mari. (very scarce and really dark; a nice example)
- ___ 204. Imperial Poinsettia Handled Milk Pitcher - Dk. Mari. (super color and irid.)
- ___ 205. **IMPERIAL DIAMOND LACE HANDLED WATER PITCHER - PUR. (SCARCE WITH SUPER IRID.; REALLY NICE)**
- ___ 206. Imperial Diamond Lace Tumbler - Pur. (really nice example)
- ___ 207. (3) Imperial Tumblers - Windmill; Fieldflower; Fashion - Mari. (selling choice)
- ___ 208. (6) Imperial Octagon Stemmed Goblets - Mari. (selling so much each for set)
- ___ 209. (6) Imperial Octagon Stemmed Wine Glasses - Mari. (selling so much each for set)
- ___ 210. Imperial Soda Gold Handled Water Pitcher - Mari. (scarce; nice irid.)
- ___ 211. Imperial Soda Gold Tumbler - Pastel Mari. (super irid.)

212. (2) 10 - 11" Tall Imperial Ripple Swung Vases - Mari. (selling so much each for pair)
213. 8" Tall Imperial Ripple Miniature Swung Vase - Clam. (nice irid.)
214. (2) Imperial Diamond and Sunburst Stemmed Wine Glasses - Amy. (selling so much each; light irid.)
215. (2) Imperial Rococco Vases - Mari. (selling choice)
216. Imperial Lustre Rose Butter Base Only - Pur. (really tough part to find; a beaut!)
217. Imperial Octagon Decanter, No Stopper - Mari.
218. Imperial Star and File Tumbler - Mari. (nice color)
219. 10 1/2" Imperial Grape Flared Master Berry Bowl - Aqua / Mari. (a very odd item with this color; nice)
- 220. 11" CAMBRIDGE INVERTED THISTLE CHOP PLATE - AMY. (A RARE ONE-OF-A-KIND ITEM; FLAT AS A PANCAKE; MADE FROM THE MASTER BERRY BOWL)**
221. Cambridge Inverted Thistle Water Pitcher - Amy. (cracked but a beaut)
- 222. (3) CAMBRIDGE INVERTED THISTLE TUMBLERS - AMY. (RARE AND NICE; SELLING CHOICE)**
223. Cambridge Inverted Strawberry Butter Lid Only - Amy. (another rare part to find; really nice)
224. M'burg Hanging Cherries Butter Lid Only - Green (scarce part and very attractive)
- 225. 6" M'BURG PEACOCKS IND. ICE CREAM BOWL - GREEN (RADIUM AND RARE; HAS BEE - NO BEADING; REALLY NICE)**
226. 9 1/2" M'burg Holly Whirl 6 Ruffled Bowl - Amy. (radium and very scarce)
227. 9 1/2" M'burg Nesting Swan 6 Ruffled Bowl - Green (satiny and very scarce with nice detail)
- 228. M'BURG SWIRL HOBNAIL SPITTOON - PUR. (RARE AND DESIRABLE; NICE IRID.; SLIGHT SMOOTHED EDGE)**
- 228A 9 - 9 1/2" Tall M'burg Swirl Hobnail Swung Vase - Green (very scarce with nice irid.; has manuf. peeling on top edge)
229. M'burg Diamonds Tumbler - Mari. (nice irid.)
- 230. WESTMORELAND WILD ROSE HANDLED SYRUP JUG - MARI. (RARE AND DESIRABLE WITH NICE COLOR AND DETAIL)**
231. (2) Big Butterfly Hatpins - Dark (selling choice)
- 232. U.S. GLASS PRINCESS LAMP - PUR. (RARE ITEM WITH NICE IRID.; NEWER HARDWARE)**
233. Dugan Fishnet 6 Ruffled Epergne Lily Only - Pur. (satiny example; scarce part)
234. (2) Dugan Heavy Iris Tumblers - Mari. (selling choice; both have bright irid.)
235. Dugan Round Many Fruits Punch Base Only - Pur. (scarce and very desirable part; nice)
236. Dugan Grape Delight 6 ftd. Ruffled Rose Bowl - Black Amy. (nice irid.; a tough base color)
237. Dugan Grape Delight 6 ftd. Ruffled Rose Bowl - Pur. (nice irid.)
238. (4) Dugan Grape Delight 6 ftd. Ruffled Rose Bowls - White (how many? we're selling them choice)
239. Dugan Holly Whirl Handled Ruffled Nappy - P. Opal. (nice opal.)
- 240. 3 1/2 - 4" TALL DUGAN TRI-CORNERED MINIATURE BEAUTY BUD VASE - PUR. (RARE AND DESIRABLE; SATINY FINISH AND TOUGH TO FIND)**
- 241. 10 - 11" DUGAN PERSIAN GARDEN LG. ICE CREAM BOWL - P. OPAL. (VERY SCARCE AND DESIRABLE ITEM; NICE OPAL. WITH AVERAGE IRID.)**
242. Dugan Stippled Petals Domed 10 Ruffled Bowl with Enam. Decor. - P. Opal. (scarce with nice decor.)
243. Dugan Stippled Petals Domed 10 Ruffled Bowl with Enam. Decor. - P. Opal. (scarce with nice decor.)
244. Dugan Raindrops Domed 10 Ruffled Bowl - P. Opal. (nice opal.)
245. Dugan Ski Star Lg. 8 Ruffled Bowl - P. Opal. (scarce shape; nice opal.)
246. Dugan Caroline 2 Sided Bowl with Crimped Edge - P. Opal. (odd shape; nice opal.)
247. Dugan Paneled Vase with Tri-Cornered Crimped Edge Top - P. Opal. (nice shape and opal.)
248. Dugan Rambler Rose Tumbler - Mari. (nice irid.)
249. Fenton Apple Tree Tumbler - Mari. (nice irid.)
250. Fenton Kittens Cereal Bowl - Blue (rare item; has 2 tiny pinheads with average irid.)
- 251. FENTON KITTENS 4 SIDED TOOTHPICK HOLDER WITH 2 SETS OF KITTENS - BLUE (RARE ITEM WITH NICE BASE COLOR AND IRID.)**
- 252. FENTON KITTENS SAUCER - LT. BLUE / LT. MARI. (RARE BASE COLORED ITEM; REALLY TOUGH)**
- 253. FENTON KITTENS CUP AND SAUCER - MARI. (VERY SCARCE AND NICE WITH GREAT DETAIL)**
254. (5) Fenton Kittens Handled Cups - Mari. (most are really nice - selling choice)
255. (5) Fenton Kittens 6 Ruffled Bowls - Mari. (various qualities; selling choice)
256. (3) Fenton Kittens 2 Sided Banana Dishes - Mari. (various qualities; selling choice)
257. Fenton Kittens 4 Sided Bowl - Mari. (scarce; satiny)
258. (2) Fenton Kittens Cereal Bowls - Mari. (scarce and nice; selling choice)
259. Fenton Kittens 4 Ruffled Toothpick Holder - Mari. (scarce with really nice color)
- 260. FENTON ORANGE TREE FTD. ROUND MASTER BERRY BOWL - CELESTE BLUE (ALTHOUGH DAMAGED, IT'S A BEAUT! ONLY 2 KNOWN)**
261. Fenton Orange Tree ftd. Ruffled Master Berry Bowl - Blue (attractive item in pretty darn good shape)
262. Fenton ftd. Orange Tree Water Pitcher - Blue (very scarce and nice; has foot damage)
263. Fenton ftd. Orange Tree Tumbler - Blue (scarce; nice)
- 264. FENTON ORANGE TREE COVERED POWDER JAR - AMY. (VERY RARE COLOR FOR THIS ITEM; REALLY NICE)**
- 265. 9 1/2" FENTON ORANGE TREE FLARED PLATE - BLUE / ELEC. BLUE (A REALLY ATTRACTIVE EXAMPLE WITH BRIGHT IRID.)**
266. (2) Fenton Lattice and Grape Tumblers - Mari. (selling so much each)
267. Fenton Blackberry 2 Row Open Edge 2 Sided Hat - Blue (attractive item with nice irid.)
268. Fenton Lotus and Grape 2 Handled 4 Sided Bon Bon - Blue (scarce and attractive)
269. 5" Fenton Cherry Chain Ice Cream Shaped Sauce - Blue (satiny)
- 270. (2) FENTON DAISY CUT BELLS - MARI. (RARE AND DESIRABLE; SELLING CHOICE)**
271. 7 1/2" Fenton Horsehead Medallion Flat Plate - Mari. (nice but bruised on base rim)
272. (2) 7 1/2 - 8 1/2" Fenton Butterfly and Berry Swung Vases - Mari. (selling choice)
273. 12 - 13" Tall Fenton April Showers Swung Vase - Mari. (satiny)
274. 9 - 9 1/2" Tall Fenton Knotted Beads Swung Vase - Blue (nice color)
- 275. FENTON FLUFFY PEACOCK BULBOUS HANDLED WATER PITCHER - AMY. (VERY SCARCE AND DESIRABLE; REALLY NICE)**
276. Fenton Orange Tree Standard Flared Mug - Blue (nice irid.)
277. 8 1/2" Fenton Dragon and Lotus Spatula ftd. 8 Ruffled Bowl - Lime Green Opal. (scarce with nice color; has chip on foot)
278. Fenton Enameled (pattern?) Interior Drape 5 pc. Tankard Set - Mari. (scarce set; brain dead on the pattern)
279. (5) Fenton Enameled Tumblers (Crocus?) - Mari. (selling so much each for set)
- 280. FENTON G & C LG. SIZE FTD. RUFFLED FRUIT BOWL - AMY. (RARE AND DESIRABLE SIZE; GREAT COLOR AND IRID.)**
281. 8 1/2 - 9" Fenton Leaf Chain 8 Ruffled Bowl - Blue (odd irid.; nice)
- 282. FENTON BUTTERFLY AND FERN BULBOUS HANDLED WATER PITCHER - BLUE (VERY SCARCE WITH NICE COLOR AND IRID.)**
283. Fenton Butterfly and Fern Tumbler with Manuf. Ground Base - Blue (satiny; nice)
284. Fenton Butterfly and Fern Tumbler with Collar Base - Blue (silvery irid.)
- 285. FENTON BUTTERFLY AND FERN BULBOUS HANDLED WATER PITCHER - DK. MARI. (SCARCE WITH NICE COLOR, IRID. AND DETAIL)**
286. (4) Fenton Butterfly and Fern Tumblers with Manuf. Ground Bases - Amy. (selling choice; nice, satiny examples)
- 287. 11 - 12" FENTON TWO FLOWERS LG. BALL FTD. ICE CREAM SHAPED BOWL - BLUE / ELEC. BLUE (VERY SCARCE AND HAS A VERY ATTRACTIVE FINISH)**
- 287A 10 - 11" FENTON STAG AND HOLLY LG. BALL FTD. ICE CREAM SHAPED BOWL - BLUE / ELEC. BLUE (ABSOLUTELY FANTASTIC COLOR AND IRID.; HAS BRIGHT BLUE HIGHLIGHTS; A SUPER, SUPER EXAMPLE)**

288. 8 1/2 - 9" Fenton Peacock at the Urn 6 Ruffled Bowl - White (scarce with really nice irid.; nice)
289. **FENTON BANDED BLACKBERRY 6 RUFFLED HAT - WHITE (VERY RARE COLOR FOR THIS ITEM; PERFECT)**
290. Fenton G & C ftd. Ruffled Fruit Bowl with Persian Medallion Int. - Mari. (nice color; satiny)
291. **N BUTTERFLY 2 HANDLED 4 SIDED BON BON WITH SPIRAL EXT. - PUR. (VERY SCARCE ITEM WITH THIS VARIATION)**
292. N Butterfly 2 Handled 4 Sided Bon Bon - Green (average item)
293. **N POPPY RUFFLED RELISH TRAY WITH RIBBED EXT. - ELEC. BLUE (VERY ATTRACTIVE WITH BRIGHT BLUE IRID.)**
294. N Poppy Ruffled Relish Tray with Ribbed Ext. - Blue (scarce item; not quite as nice as previous item)
295. **N DANDELION 7 PC. TANKARD WATER SET - WHITE EXTREMELY RARE SET; PERFECT WITH GREAT IRID.)**
296. **N DANDELION TANKARD WATER PITCHER WITH RIBBED INT. - PUR. (VERY SCARCE WITH NICE BRIGHT IRID.)**
297. (2) N Dandelion Tumblers - Pur. (selling choice)
298. N Dandelion Tankard Water Pitcher - Green / Gold (not Carnival but a very scarce item)
299. **N DANDELION HANDLED MUG - AQUA OPAL. (RARE AND DESIRABLE; A VERY ATTRACTIVE ITEM)**
300. **N ORIENTAL POPPY 7 PC. TANKARD WATER SET - ICE BLUE (EXTREMELY RARE SET; WELL MATCHED AND VERY ATTRACTIVE)**
301. **N ORIENTAL POPPY 6 PC. TANKARD WATER SET - WHITE (RARE AND DESIRABLE; HAS LIGHTER IRID. BUT NICE)**
302. **N ORIENTAL POPPY TANKARD WATER PITCHER - GREEN (RARE AND DESIRABLE; REALLY NICE ITEM)**
303. (3) N Oriental Poppy Tumblers - Green (scarce - selling choice)
304. **N ORIENTAL POPPY 7 PC. TANKARD WATER SET - PUR. (RARE AND DESIRABLE; WELL MATCHED AND NICE IRID.)**
305. N Oriental Poppy Tankard Water Pitcher - Pur. (scarce; has a check at top of handle)
306. (2) N Oriental Poppy Tumblers - Pur. (selling choice; nice)
307. N Oriental Poppy Tankard Water Pitcher - Dk. Mari. (attractive with nice color and irid.)
308. (2) N Oriental Poppy Tumblers - Dk. Mari. (nice color and irid.; selling choice)
309. 9" N Four Pillar Ribbed Swung Vase - Aqua Opal. (nice color and opal.; epoxy on one foot)
310. **12 1/2" TALL N TREE TRUNK MID SIZE SWUNG VASE - WHITE (RARE AND DESIRABLE; FROSTY WITH SUPER IRID.)**
311. 12" Tall N Tree Trunk Mid Size Swung Vase - White (just like above but has a body bruise)
312. 12 1/2 - 13" N Tree Trunk Mid Size Swung Vase - Mari. (nice color; scarce with a nice satiny finish)
313. 9" N Tree Trunk Standard Swung Vase - Amy. (satiny)
314. N Tornado Tri-Cornered Standard Size Vase - Horehound (rare color for this item; small chip on base)
315. **N IVY TOWN PUMP NOVELTY - PUR. (RARE AND DESIRABLE; NICE COLOR AND IRID.; VERY ATTRACTIVE)**
316. **N GREEK KEY TANKARD WATER PITCHER - PUR. (RARE AND VERY DESIRABLE; NICE COLOR AND IRID.)**
317. (3) N Greek Key Tumblers - Pur. (scarce and nice; selling choice)
318. Pair N Stretch 6 Paneled Candlesticks - Vaseline (very attractive pair with great color)
319. N Peacock at the Fountain Butter Lid Only - Green (really tough part; nice color and irid.)
320. N Peacock at the Fountain Lg. ftd. Ruffled Fruit Bowl - Blue (scarce with a goldish; small chip on edge)
321. **N PEACOCK AT THE FOUNTAIN WATER PITCHER - VERY SCARCE AND VERY ATTRACTIVE; NICE)**
322. (3) N Peacock at the Fountain Tumblers - Elec. Blue (super examples; selling choice)
323. N Lattice and Poinsettia ftd. 8 Ruffled Bowl - Clear Opal. (not Carnival; nice opal. and scarce)
324. N Lattice and Poinsettia ftd. 8 Ruffled Bowl - Ice Blue (rare but has chip on edge)
325. **N PEACOCK AT THE URN LG. ICE CREAM BOWL - ICE GREEN (RARE, DESIRABLE AND A SUPER EXAMPLE)**
326. **N PEACOCK AT THE URN LG. ICE CREAM BOWL - WHITE (VERY SCARCE WITH SUPER IRID.; NICE)**
327. **N PEACOCK AT THE URN LG. ICE CREAM BOWL - PUR. (ACTUALLY QUITE A NICE EXAMPLE; REALLY NICE)**
328. (6) N Peacock at the Urn Ind. Ice Cream Bowls - Pur. (various iridized qualities; selling choice)
329. N Peacock at the Urn Lg. Ice Cream Bowl - Mari. (odd color; very scarce and desirable)
330. N Peacock at the Urn Lg. Ice Cream Bowl - Mari. (almost a twin to the above item)
331. **N PEACOCK AT THE URN FLARED CHOP PLATE - PUR. (RARE AND DESIRABLE; A BETTER THAN AVERAGE EXAMPLE WITH NICE IRID.)**
332. **N PEACOCKS BOWL WITH PIE CRUST EDGE AND RIBBED EXT. - ELEC. BLUE (A SUPER, SUPER BRIGHT BLUE EXAMPLE; NICE)**
333. **N PEACOCKS PLATE WITH RIBBED EXT. - BLUE / ELEC. BLUE (VERY SCARCE WITH NICE IRID.; HAS A SALT STAIN)**
334. **N PEACOCKS PLATE WITH RIBBED EXT. - ICE GREEN (VERY SCARCE WITH VERY NICE IRID.)**
335. **N PEACOCKS PLATE WITH RIBBED EXT. - WHITE (VERY SCARCE WITH REALLY NICE IRID.)**
336. N Peacocks Plate with Ribbed Ext. - Mari. (very scarce with nice, even satiny finish)
337. **N PEACOCKS RUFFLED BOWL WITH RIBBED EXT. - AQUA OPAL. (RARE AND VERY DESIRABLE; PRETTY GOOD OPAL. AND GREAT IRID.)**
338. **N PEACOCKS RUFFLED BOWL WITH RIBBED EXT. - AQUA OPAL. (RARE AND DESIRABLE; NICE OPAL. AND IRID.)**
339. N Singing Birds Handled Mug - Dk. Mari. (nice irid.)
340. **N SINGING BIRDS HANDLED MUG - LAVENDER (VERY SCARCE BASE COLOR AND IRID.; NICE)**
341. N Singing Birds Handled Mug - Green (nice irid.)
342. N Singing Birds Handled Mug - Pur. (nice irid.)
343. N Acorn Burr 9 pc. Ruffled Punch Set - Green (has one repaired point; really nice shelf piece)
344. (5) N Acorn Burr Tumblers - Pur. (some really nice; selling choice)
345. **N ACORN BURR COVERED BUTTER DISH - PUR. (VERY SCARCE WITH NICE COLOR AND IRID.)**
346. N Double Loop Chalice or Open Sugar - Blue (scarce with really nice color and irid.)
347. 9 1/2" N Wild Strawberry Lg. 8 Ruffled Bowl with Basketweave Ext. - Amy. (nice satiny irid.)
348. (2) 6" N Wild Strawberry Ind. 6 Ruffled Bowls with Basketweave Ext. - Amy. (nice irid.; selling so much each for pair)
349. N Strawberry 8 Ruffled Bowl with Basketweave Exterior - Mari. (satiny)
350. **N WILD STRAWBERRY LG. 8 RUFFLED BOWL WITH BASKETWEAVE EXTERIOR - WHITE (QUITE A RARE COLOR FOR THIS ITEM; REALLY NICE)**
351. **N GRAPE AND GOTHIC ARCHES 7 PC. WATER SET - BLUE (RARE AND DESIRABLE SET; REALLY NICE IRID.)**
352. (6) N Grape and Gothic Arches Tumblers - Pearlized Custard (scarce and attractive items; selling per each)
353. N Peach Tumbler - Blue / Elec. Blue (scarce with blue highlights)
354. N Peach 7 pc. Water Set - White with Gold (pitcher has check at top of handle; attractive set)
355. **N THREE FRUITS STIPPLED PLATE WITH RIBBED EXT. - AQUA WITH OPAL. TIPS (RARE AND VERY DESIRABLE; OPAL. ON TIPS AND REALLY NICE PASTEL IRID.)**
356. **N THREE FRUITS STIPPLED PLATE WITH RIBBED EXT. - ELEC. BLUE (SUPER COLOR AND IRID.; HAS BRIGHT BLUE HIGHLIGHTS)**
357. **N THREE FRUITS STIPPLED PLATE WITH RIBBED EXT. - ELEC. BLUE (ANOTHER REALLY NICE EXAMPLE; SLIGHT WEAR)**
358. **N THREE FRUITS STIPPLED PLATE WITH RIBBED EXT. - DK. MARI. (ATTRACTIVE IRID. WITH NICE HIGHLIGHTS)**
359. N Three Fruits Stippled Plate with Ribbed Ext. - Lt. or Pastel Mari. (really light - sorta Clambroth)
360. **N THREE FRUITS MEDALLION STIPPLED FTD. RUFFLED BOWL WITH MEANDER EXT. - AQUA OPAL. (RARE AND DESIRABLE; A PASTEL EXAMPLE)**
361. **N THREE FRUITS DOMED 8 RUFFLED BOWL WITH BASKETWEAVE EXT. - WHITE WITH PUR. STREAKS (REALLY ODD ITEM - WHITE WITH PLUM COLORED STREAKS)**
362. N Three Fruits Plate with Basketweave Ext. - Pur. (really attractive item with bright irid.)
363. N Three Fruits Plate with Basketweave Ext. - Dk. Mari. (nice dark satiny example)

364. N Fruits and Flowers Stemmed Handled Bon Bon - Pur. (super bright irid. - really nice)
365. **N ROSE SHOW 8 RUFFLED BOWL - ELEC. BLUE (RARE AND VERY DESIRABLE; BRIGHT BLUE HIGHLIGHTS)**
366. **N POPPY SHOW FLARED PLATE - DK. MARI. (RARE AND VERY NICE EVEN COLOR AN IRID.)**
367. (2) N Raspberry Tumblers - Horehound (rare base color; selling choice)
368. **N HEARTS AND FLOWERS STEMMED RUFFLED COMPOTE WITH RIBBED EXT. - AQUA OPAL. (RARE AND DESIRABLE WITH NICE OPAL. AND IRID.)**
369. N Heart and Flowers Stemmed Ruffled Compote with Ribbed Ext. - White (scarce with nice average color and irid.)
370. **N GOOD LUCK STIPPLED PLATE WITH RIBBED EXT. AND NARROW BASE - ELEC. MARI. (THIS ITEM ROCKS A BIT BUT IT SURE ROCKS! SUPER!)**
371. N Good Luck Plate with Basketweave Ext. - Pur. (rare, desirable with attractive multi-colored irid.)
372. N Good Luck 8 Ruffled Bowl with Ribbed Ext. - Elec. Blue (very desirable with bright blue highlights)
373. N Good Luck 8 Ruffled Bowl with Basketweave Ext. - Green (scarce and desirable; satiny finish)
374. N Wishbone 8 Ruffled ftd. Bowl with Ruffles and Rings Ext. - Green (nice satiny finish)
375. **N GRAPE ARBOR 6 PC. TANKARD WATER SET - ICE BLUE (RARE SET; PITCHER HAS CHIP ON RIM BUT STILL NICE)**
376. N Grape Arbor 7 pc. Tankard Water Set - Dk. Mari. (very scarce; dark color; well matched and attractive)
377. N Grape Arbor Tankard Water Pitcher - Dk. Mari. (really nice example; dark color and irid.)
378. (5) N Grape Arbor Tumblers - White (very scarce; average irid.; selling choice)
379. (3) N Wide Panel Side Lilies - Green (somebody needs these....selling choice)
380. **N WIDE PANEL 4 LILY EPERGNE - BLUE LILIES. PUR. BASE (FIND ME A BLUE BASE; REALLY NEAT; BASE HAS A CHIP)**
- 380A **N G & C 14 PC. MASTER (OR BANQUET) RUFFLED PUNCH SET - AMY. (RARE AND VERY DESIRABLE SET; HAS A NICE SATIN FINISH AND IS PRETTY MUCH PERFECT)**
381. N G & C Stippled Handled Bon Bon with Basketweave Ext. - Elec. Blue (super irid. and very desirable)
382. N G & C Handled Bon Bon with Basketweave Ext. - Pur. (really nice irid.)
383. 6" N G & C 2 Sided Card Tray with Basketweave Ext. - Mari. (nice pastel irid.)
384. N G & C Tri-Cornered Handled Pin Nappy - Pur. (super interior irid.; really nice)
385. **N G & C FTD. HATPIN HOLDER - GREEN (SCARCE; NICE COLOR AND IRID.)**
386. N G & C ftd. Hatpin Holder - Pur. (scarce with nice bright highlights)
387. N G & C ftd. Hatpin Holder - Pur. (scarce; has more of a satiny finish)
388. **N G & C COLOGNE BOTTLE AND STOPPER - AMY. (SCARCE; A LIGHTER BASE COLOR WITH BRIGHT IRID.)**
389. N G & C Cologne Bottle and Stopper - Pur. (scarce with nice satiny irid.)
390. N G & C Lg. Dresser Tray - Pur. (scarce with bright irid.)
391. N G & C Small Pin Tray - Pur. (very scarce with nice irid.)
392. N G & C Covered Powder Jar - Pur. (scarce with a nice satiny finish)
393. N G & C Lg. Dresser Tray - Green (very scarce with bright color and irid.)
394. **N G & C COLOGNE BOTTLE AND STOPPER - GREEN (VERY SCARCE; NICE COLOR AND IRID.)**
395. **N G & C Lg. ICE CREAM BOWL WITH BASKETWEAVE EXT. - ELEC. BLUE (RARE AND VERY ATTRACTIVE; PERFECT WITH BRIGHT BLUE IRID.)**
396. N G & C Lg. Ice Cream Bowl with Basketweave Ext. - White (scarce with bright irid.; nice)
397. N G & C Variant Plate with Plain Ext. - Pur. (this item has nice bright irid.)
398. N G & C Stippled Plate with Ribbed Ext. and Old Rose Distillery Advert. - Green (very scarce item; has epoxied point)
399. (6) N G & C ftd. Sherbets - Pur. (scarce; selling so much each for set)
400. **N G & C LG. STEMMED RUFFLED OPEN COMPOTE - PUR. (RARE AND VERY DESIRABLE; BRIGHT HIGHLIGHTS)**
401. **N G & C FTD. OVAL FLARED BANANA BOAT - PUR. (REALLY DESIRABLE ITEM; HAS AN ODD FLARE AND SUPER IRID.)**
402. N G & C ftd. Ruffled Fruit Bowl - Dk. Mari. (scarce with nice color and irid.)
403. **N G & C LG. COVERED COMPOTE - PUR. (VERY SCARCE AND DESIRABLE; NICE IRID.)**
404. N G & C Covered Handled Cookie Jar - Pur. (very scarce with bright irid.)
405. **N G & C 6 PC. WHISKEY SET - PUR. (RARE AND DESIRABLE SET; DECANTER IS SATINY AND SET IS ATTRACTIVE)**
406. **N G & C TABLE SIZE RUFFLED PUNCH BOWL AND BASE - PUR. (VERY SCARCE AND NICE)**
407. (3) N G & C Handled Punch Cups - Pur. (nice irid.; selling so much each for set)
408. N G & C Handled Water Pitcher - Green (scarce color with very nice irid.)
409. N G & C Tumbler - Green (seems to be an unusually bright example)
410. **N G & C TANKARD HANDLED WATER PITCHER - PUR. (RARE AND DESIRABLE; NICE IRID.)**
411. (2) N G & C Covered Sweetmeat Compotes - Pur. (selling choice - both are nice)
412. N G & C 7 pc. Water Set - Pur. (scarce and desirable set with nice color)
413. (2) N G & C Tumblers - Pur. (nice examples; selling per each)
414. **N G & C 4 PC. TABLE SET - PUR. (GETTING TO BE A TOUGH SET TO FIND; THIS IS A NICE ONE)**
415. N G & C Covered Butter Dish - Pur. (scarce with nice color and irid.)
416. N G & C Covered Butter Dish - Dk. Mari. (really nice color and irid.)
417. (2) Pair N G & C Breakfast Sugar and Creamer Sets - Pur. (scarce sets; selling choice)
418. N G & C Powder Jar Lid Only - Green (a really tough part)
419. N G & C Covered Compote Lid Only - Pur. (tough part)
420. N G & C Covered Cracker Jar Lid Only - Pur. (tough part)
421. (9) N Greek Key Tumblers - Green (how many? selling choice)
422. **N LEAF AND BEADS FTD. ROSE BOWL - AQUA OPAL. (REALLY ATTRACTIVE; GREAT IRID.)**
423. **N LEAF AND BEADS FTD. ROSE BOWL - AQUA OPAL. (A SCARCE AND NICE EXAMPLE)**
424. N Leaf and Beads ftd. Rose Bowl - Aqua Opal. (nice item; nice opal.; has a bit of interior wear)
425. (2) **N BEADED CABLE FTD. RUFFLED ROSE BOWLS - AQUA OPAL. (NICE EXAMPLES; PASTEL AND SELLING CHOICE)**
426. N Beaded Cable ftd. Ruffled Rose Bowl - Green (sorta nice example with a Mari. overlay)
427. N Beaded Cable ftd. Ruffled Rose Bowl - Pastel Mari. (attractive with bright irid.)
428. (2) **N DRAPERY RUFFLED ROSE BOWLS - AQUA OPAL. (NICE ITEMS; SELLING CHOICE)**
429. N Drapery Ruffled Rose Bowl - Blue (scarce color for this item; satiny)
430. (2) N Fine Cut and Roses ftd. Rose Bowls with Fancy Int. - Ice Blue (pretty nice examples with nice irid.; selling choice)
431. N Fine Cut and Roses ftd. Rose Bowl - Pur. (really nice irid.)
432. N Daisy and Plume ftd. Ruffled Rose Bowl with Berry Int. - Blue (very scarce base color with nice irid.)
433. N Daisy and Plume ftd. Ruffled Rose Bowl with Berry Int. - Pur. (nice satiny example)
434. **N EIGHT SIDED HANDLED BUSHEL BASKET - ICE GREEN (RARE AND DESIRABLE; BRIGHT IRID.)**
435. N Eight Sided Handled Bushel Basket - Dk. Mari. (really nice dark color and irid.)
436. **N ROUND HANDLED BUSHEL BASKET - ICE GREEN (VERY SCARCE AND DESIRABLE WITH NICE IRID.)**
437. N Round Handled Bushel Basket - Lt. Amy. (scarce color and nice irid.)
438. N Round Handled Bushel Basket - Dk. Amy. (scarce with nice color)
439. N Round Handled Bushel Basket - Pur. (scarce)
440. (9) Odd N G & C Parts and Pieces - Misc. 2 Green Butter Bases, etc.)

Immediately following the last items we will be selling a number of damaged items including a N G & C Master Punch Set, a number of Water Pitchers, plus other items of note. Stay around for this!



Burns Auction Service
P.O. Box 608
Bath, New York 14810

First Class
US Postage
PAID
Permit No. 7
Hammondsport, NY

**Keystone
Convention
Auction
2002!**



**LEE MARKLEY
BOX 306
MENTONE IN 46539**

46539-0306

