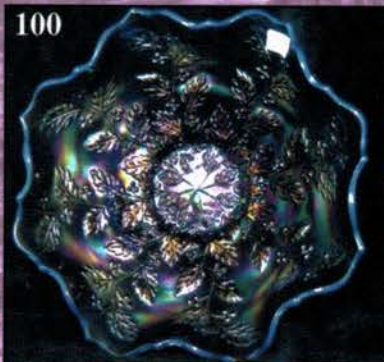


CARNIVAL GLASS AUCTION

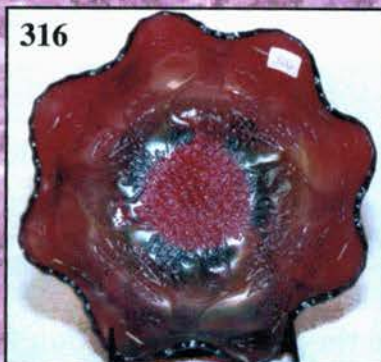
Saturday, May 18, 2002 9:00 a.m., C.D.T.

Fantastic Collection from Colorado State

100



316



238



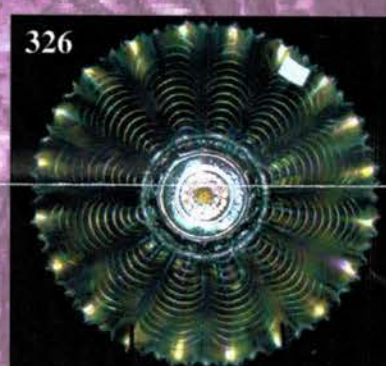
236



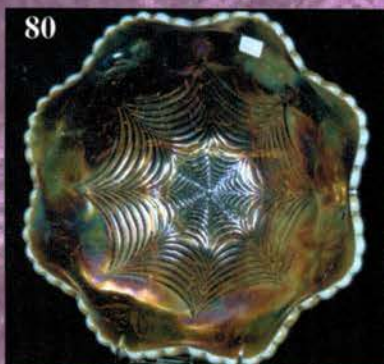
300



326



80



186



324



Held By the Mickey Reichel Antique & Auction L.C.

Office: 660-882-5292 • Home: 660-882-5283

Direct e-mail: mreichel@undata.com

WEB SITES ON: <http://www.yourauctionpage.com/reichel>
<http://www.glasshunters.com/mr>



Held Inside the Mickey Reichel Auction Center

1 Mile North of I-70 on Hwy. 5, Exit 101, Boonville, Missouri • 20 Miles West of Columbia, MO on I-70

Preview Friday 12 p.m. - 5 p.m. and 7:30 a.m. - 9:00 a.m. Day of Auction



TERMS: Cash or Good Check, VISA and MasterCard accepted.



3% Clerking Fee on all purchases except for payment of cash or check. Proper I.D. required.

WEB SITES: www.yourauctionpage.com/reichel and <http://www.glasshunters.com/mr>

ABSENTEE BID POLICY:

WRITE IN BIDS: If you are unable to attend the auction, we will be happy to accept absentee bids which must be received by THURSDAY, MAY 16, 2002. Don't Delay. E-Mail: mreichel@undata.com

FOR AUCTION PRICE RESULTS: Send \$3.00 and Large S.A.S.E. to 516 Third Street, Boonville, MO 65233-1536

PLEASE NOTE: There is a **\$5 handling charge for each successful bid which will be added to the selling price** for all write-in bids. This is in addition to the cost of postage, insurance and packing. Your write-in bid will be entered just as if you are present and bidding. **Successful bidders will be notified in 1 to 3 days by the auctioneer (so be sure to include your phone number).** Direct mail bids to Auctioneer **Mickey Reichel, 516 Third Street, Boonville, MO 65233-1536.** Terms: Cash or Check accepted with proper I.D. and Social Security Number and References. Announcements made day of the auction supercede all printed material. Not Responsible for Accidents or Sold Items.

No return on any items once they leave the Auction Center (No Exceptions).****

Call for additional information: 660-882-5292 days or 660-882-5283 evenings before 9:00 p.m.

FAX: 660-882-5292 (evening hours start FAX transmission after beep)

MAIL BIDS: Items are bid on in perfect condition with average or above iridescence OR as listed in the brochures. Bids will not be carried out when damage on an item has been found during the auction.

PEOPLE PRESENT AT AUCTION ARE RESPONSIBLE FOR FINDING ANY PINHEADS, WEAR, SPOTTINESS, MANUFACTURER'S DEFECTS OR ANY OTHER MINOR FLAWS, ETC. *****

NOTE: Read each line, as we have accentuated the type of no particular piece, all are special.

Make Reservations EARLY at one of these local motels:

Days Inn: 660-882-8624 • Comfort Inn: 660-882-5317 • Super 8: 660-882-2900 • Holiday Inn: 660-882-6882

Auction Consists of Rarity, Great Irid. and Variety

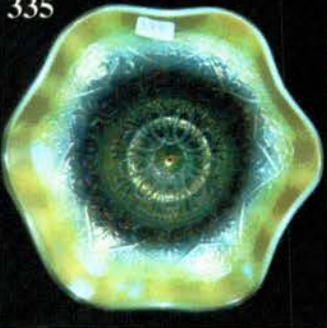
THANK YOU FOR ATTENDING TODAY

1. M - Imp. 5-1/4" Mini Morning Glory Vase - 4" Top, 2-1/2" Base
2. M - Imp. 9-1/4" JIP Curled Rib Vase
3. M - Imp. 5-3/8" Mini Morning Glory Vase - 2-1/4" Opening, 2-1/2" Base
4. Rich M - Imp. 5-1/8" Thin Rib and Drape Vase - 4-1/4" Opening, 2-1/2" Base - Great
5. M - Imp. Beaded Bullseye 12-1/2" Vase - Electric Blues and Pinks
6. M - Imp. 10-1/2" Freefold Vase - 7-3/4" Front Height - Nice Effect!
7. M - Imp. 10-3/4" Ripple Vase - 4-1/2" Opening - Well Above Average Piece
8. M - Imp. 9-1/2" Ripple Vase - Swung and Pulled Out In Length
9. M - Imp. 7-1/2" Ripple Vase - Detailed Example

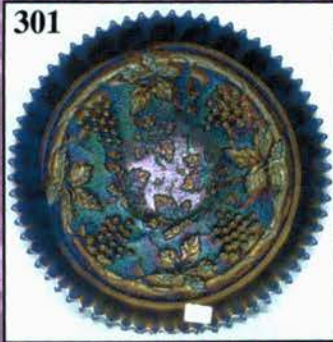
10. M - Imp. 8-1/2" Flute Vase - 5-1/2" Flared Opening
11. Lav. - Imp. 6" Balloon Blank Vase - Radium and Gorgeous!
12. M - 8-1/2" Interior Paneled Fan Vase - Sailing Ship Sterling Overlay
13. P - N 6-1/2" Squatty Thin Rib Vase - 6-1/2" Opening - Elec. Pinks and Purples
14. P - N Corn Vase - Plain Base - Nice Example
15. G - N - 10-5/8" Tree Trunk Vase - Square Opening
16. P - N 6" Squatty Tree Trunk Vase - 4-3/4" Opening - Scarce Size, Nice Color
17. Lime G Opal - N 9" Tree Trunk Vase - Non Iridized
18. Fantastic Pastel M - N 10-3/4" Tree Trunk Vase
19. P - N 9-1/2" Diamond Point Vase - Square 4-1/2" Opening
20. Rich Ice G - N 10" Diamond Point Vase - Scarce Color

21. G - N 9-3/4" Fine Rib Vase - Alaskan Effect
22. **Russet - N 11-1/4" Thin Rib Vase - Top Notch Example**
23. Ice G - N 8-1/4" Drapery Vase - Normal Toe Flaws
24. **Russet - N 11-3/8" Four Pillars Vase - Surprise! Good Feet**
25. M - Imp. Tulip and Cane Claret Goblet - Choice A, B, C, D, E
26. **Emerald G - N Peacock at Fountain Tumbler - RARE**
27. G - N Peacock at Fountain Tumbler - Bronze and Pink Beauty
28. **Ice B - N Oriental Poppy Tumbler**
29. M - N Oriental Poppy Tumbler
30. **P - N Oriental Poppy Tumbler**
31. B - N Peach Tumbler - Gold and Purple Highlights
32. **B - N Grape and Gothic Arches Tumbler - Choice A, B, C, D, E**
33. M - N Grape and Gothic Arches Tumbler - Blue and Yellow Irid.
34. **G - N Springtime Tumbler - Scarce and Beautiful**
35. G - N Singing Birds Tumbler - Always In Demand
36. **P - N Raspberry Tumbler - Purples and Golds**
37. M - Imp. Crabclaw Tumbler - Top Notch
38. **M - Imp. Star and File Standard Tumbler - Choice A or B**
39. M - Imp. 474 Tumbler - A Dandy
40. **M - Imp. File Tumbler - Quite Scarce**
41. B - Tiger Lily Vt. 3-7/8" Tumbler - Radium w/Purple Highlights - Rare
42. **B - Tiger Lily Vt. 3-7/8" Tumbler - Multi-Electric Radium - Also Rare**
43. P - N Grape and Cable Tumblers - Choice A or B
44. **Cobalt B - Lucile Tumbler - A Tumbler Collector's Prize!**
45. B - Dugan Stork and Rushes Tumblers - Choice A, B, C, D, E, F
46. **Scarce A - Fenton 10" Ball Ftd. Sq. 8 Ruffle Two Flowers Bowl**
47. B - Fenton Spat Ftd., Rd. 7-1/2" Two Flowers Flared Nut Bowl
48. **Scarce A - Fenton Spat Ftd., Sq. 8 Ruffle 7-3/4" Two Flowers Bowl - Blues and Pinks**
49. M - Fenton Spat Ftd., 8 Ruffle 8" Stag and Holly Bowl
50. **Scarce A - Fenton Spat. Ftd., 8 Ruffle 8" Stag and Holly Bowl - Finely Detailed**
51. Light M - Fenton 8 Ruffle 9" Feather Stitch Bowl
52. **Royal B - Fenton Ball Ftd., JIP Horse Medallion Bowl - HOT PATTERN!**
53. Light M - Fenton Ball Ftd., JIP Horse Medallion Bowl - Radium Gold and Silver
54. **M - Fenton 7-5/8" Horse Medallion Plate - Sharp Strike and Good Color**
55. M - Fenton 7-3/4" Tight CRE Heat and Vine Bowl - Scarce Shape
56. **A - Fenton 8-1/2" Deep Rd. Flared Collar Base Little Flowers Bowl - Gorgeous**
57. B - Fenton Vintage (Grape) Fernery Bowl
58. **B - Fenton 8" ICS Autumn Acorns Bowl**
59. Light M - Fenton Collar Base, 8 Ruffle 9" Chrysanthemum/Windmill Bowl
60. **G - Fenton 8" ICS Ribbon Tie Bowl - Very Uncommon Shape and Great Color**
61. G - Fenton 9", 6 Ruffle Ribbon Tie Bowl
62. **B - Fenton 9", 3 in 1 Edge Low Ruffled Ribbon Tie Plate/Bowl?**
63. A - Fenton 9-3/8", 12 Sides Three Fruits Plate
64. **B - Fenton 9-3/8", 12 Sides Three Fruits Plate**
65. M - Fenton Ball Ftd., 8 Ruffle 10" Poinsettia and Lotus (Water Lily) Bowl
66. **M - Fenton Ball Ftd., 8 Ruffle 9-1/2" Little Fishes Bowl - Scarce**
67. Light M - Fenton 7" Rd. Scalloped Pine Cone Bowl
68. **P - Dugan Fishnet Single Lily Epergne - Rainbow Irid.**
69. M - Dugan Dome Ftd., 8-3/4", 10 Ruffle Dogwood Sprays Bowl
70. **Deep Purple - Dugan Dome Base, 10 Ruffle Raindrops Bowl - Multi Electric**
71. Radium M - Dugan 8 Ruffle Lattice and Points Bowl w/Daisy Center - Great
72. **P - Dugan 11-3/8", 6 Ruffle Victorian Bowl - Seldom Offered**
73. M - Dugan Cherries Ball Ftd., 10 Ruffle Bowl - Pattern Inside and Out
74. **Scarce A - Cherries Ball Ftd., 10 Ruffle Bowl - Pattern Inside and Out**
75. PO - Dugan Honeycomb Rosebowl - Lots of Opal
76. **PO - Dugan Ball Ftd., CRE 7" Cherries Bowl - Plain Interior**
77. PO - Dugan 10-3/4" Ski Star and Compass Bowl - Scarce 8 Ruffle Edge
78. **PO - Dugan Dome Base, CRE 8-3/4" Tri-Corner Flowers and Frames Bowl - Super Example**
79. PO - Dugan Collar Base, 9" Tri Corner, CRE Smooth Rays Bowl - Caroline Ext.
80. **Extremely Rare PO - Dugan Heavy Web Flared 8 Ruffle 11-1/2" Bowl - Exceptional Find**
81. Stretchy M - Dugan Leaf Rays Nappy
82. **PO - Dugan 6-1/2", CRE, 6 Ruffle Folding Fan Compote**
83. Stunning Pastel M - Dugan Wreathed Cherry Sm. Berry Bowl
84. **P - Dugan Amaryllis Tri Corner Compote - Little Beauty**
85. W - Dugan Question Marks Two Handled Bonbon - Multi Color & Frosty
86. **PO - Dugan 6", 8 Ruffle Wishbone and Spades Bowl - BW Ext. - 1" Opal**
87. PO - Dugan Tri Corner Pinched Swirl Rosebowl or Vase
88. **PO - Dugan 5-1/2" Squatty Target Vase - 6" Opening, 3-1/2" Base - Wow!**
89. PO - Westmoreland 8", 6 Ruffle Scales Bowl - Milky Base
90. **Teal - Westmoreland Prisms 2 Handled Compote - Rare Little Beauty**
91. MMG - Westmoreland File and Fan Low Scalloped Compote - Fantastic Example
92. **M - Westmoreland Hobstar and Fruit Two Sides Up Card Tray Dish - Great Strike**
93. Lav. - Westmoreland 8-1/2" Corinth Vase - Base Chip
94. **Vas. - Fenton Holly Sm. Ruffled Compote - Glows! - M. Overlay**
95. M - Fenton Holly Sm. Ruffled Compote
96. **W - Fenton 9-1/2" Holly Plate - Fantastic Pastel Multi Irid.**

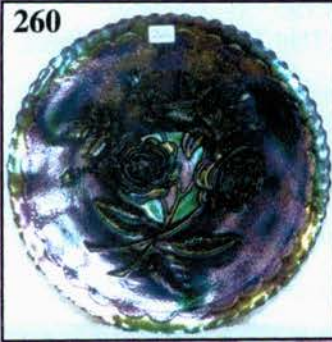
335



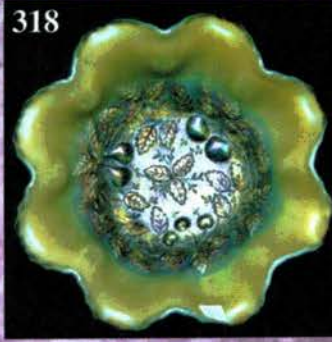
301



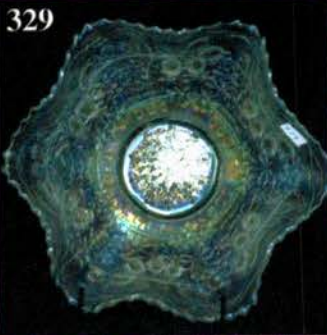
260



318



329



342



340



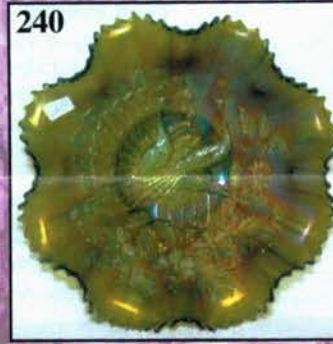
328



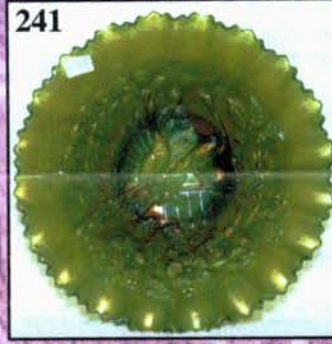
234



240



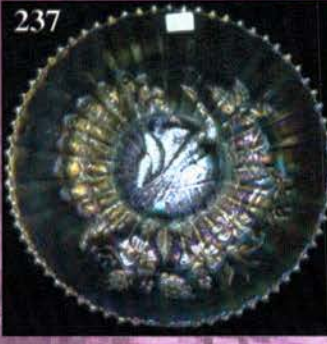
241



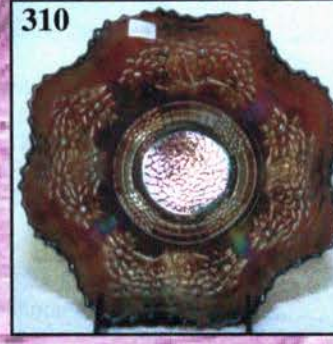
320



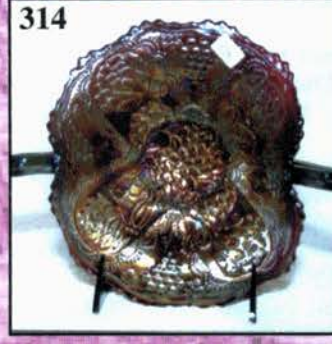
237



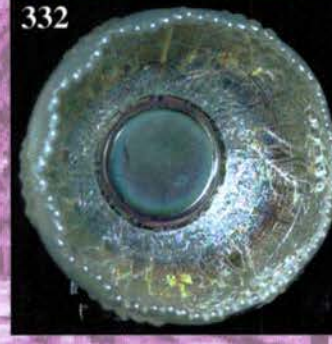
310



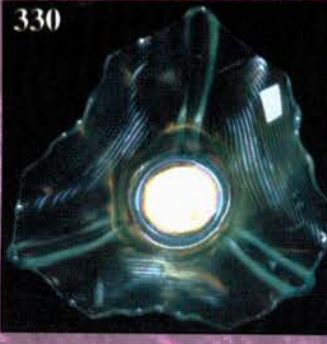
314



332



330



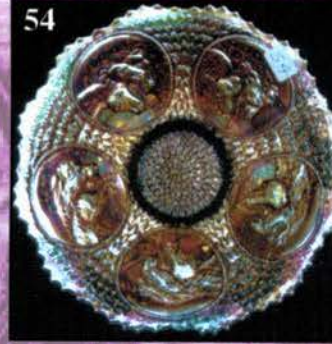
239



202



54



97. G - Fenton 9", 8 Ruffle Holly Bowl - Pleasing Color
98. **B - Fenton 9-5/8" Holly Plate - Soft Blue Base Color**
99. M - Fenton 8 Ruffle 9" Holly Bowl - Very Nice
100. **Ultra Rare Blue Opal - Fenton Holly 8 Ruffle, 9" Bowl - Stunning Multi Electric Radium Winner!**
101. M - N Dome Base 8-3/4" Ruffled Bowl - Greek Key Ext./Plain Int.
102. **G - N Dome Base 8-1/2" Ruffled Bowl - Greek Key Ext./Plain Int. - Radium Finish**
103. M - N Dome Base 8-1/2" Ruffled Bowl - Rare Stippled Rays Int./Greek Key Ext.
104. **G - N 8" Ruffled, Short Stemmed Petals Compote**
105. M - N Smooth Rays Ball Ftd. Candy Dish w/Beaded Cable Ext.
106. **P - N Spat. Ftd., 8 Ruffle, 7-1/2", Deep Sunflower NUT Bowl - Very Scarce Shape**
107. P - N Ruffled Good Luck Bowl - BW Ext.
108. **P - N 8 Ruffle, Dome Ftd. 8" Star of David and Bows Bowl**
109. G - N 7-1/2", 6 Ruffle Smooth Rays Bowl - Poppy In Marie
110. **P - N Ftd. Wild Rose Candy Dish w/Stippled Rays Interior - First Rate Example**
111. P - N Grape and Cable Small, Pedestal-Footed Sherbet - Super Electric
112. **G - N Spat. Ftd., 8 Ruffle 9" Three Fruits Medallion Bowl/Snowflake Ext.**
113. P - N 8-3/4", PCE Nippon Bowl - Splendid Iridescence
114. **Fantastic A - N Springtime Butter Dish w/Lid - Very Scarce**
115. P - N Acorn Burrs Creamer
116. **P - N Grape and Cable Sweetmeat Compote with Lid - Just Beautiful!**
117. M - Imp. Star and File Water Pitcher - Very Scarce and a Nice One
118. **M - U.S. Glass Diamond and Daisy Cut Pitcher**
119. M - N Raspberry Milk Pitcher - Well-Defined Pattern
120. **G - Omnibus Water Pitcher - Possibly One Of A Kind - VERY RARE**
121. P - N Raspberry Water Pitcher - Eye Catching Color
122. **M - U.S. Glass Rising Sun Pedestal Water Pitcher**
123. Multi Electric P - N Grape and Cable Water Pitcher - Outstanding Example
124. **Deep B - N Grape and Gothic Arches Water Pitcher - Lots of Color**
125. Rich M - N Grape and Cable Tankard Water Pitcher - Very Scarce
126. **M - Fenton Inverted Coin Dot 5 pc. Water Set - Pitcher & Four Tumblers**
127. Rich M - Fenton Wine and Roses Cider Pitcher with Six Goblets
128. **Scarce B - N Peach Water Pitcher - Multi Electric**
129. B - N Peach Tumbler
130. **P - N Peacock at Fountain Water Pitcher - Very Scarce And Lovely**
131. P - N Peacock at Fountain Tumbler - Multi Electric Beauty
132. **M - N Grape Arbor Tankard Pitcher and Six Tumblers - Great Set**
133. M - Fenton Freesia Enameled Tankard Water Pitcher - Drapery Int.
134. **M - N Grape and Cable Pitcher w/Six Tumblers - GREAT SET**
135. Lavender Tint - Fenton 7" Squatty Diamond Point Columns Vase - M. Overlay
136. **M - Fenton Super Squatty 5" Boggy Bayou Vase - 3-1/2" Base, 4-1/2" Ruffled Top**
137. M - 8-3/4" Interior Flute (?) Pattern Vase
138. **P - Fenton 11" Diamond and Rib Vase - Extra Nice**
139. B - Fenton 10-3/4" Fine Rib Vase
140. **M - Jenkins 7-1/4" Stork Vase - Top Notch Example**
141. G - Fenton 10-1/2" April Showers Vase - Peacock Tail Int.
142. **M - Fenton 12" CRE Rustic Vase**
143. Celeste - Diamond Stretch 7-1/4" Candlestick Vases - Pr. - Plate 66 - Stretch Bk.
144. **W - Dugan 10" Big Basketweave Vases - Choice A or B**
145. M - Dugan 7-3/4" Lattice Points Vase w/Daisy Int.
146. **G - Mlbg. 11-1/2" Hobnail Vt. Mid-Size Vase - 4-1/8" Base**
147. G - Mlbg. 14-3/4" Hobnail Vt. Swung Vase - 4-1/8" Base
148. **P - Mlbg. 9-3/4" Ohio Star Vase - A Long-Time Favorite**
149. P - Mlbg. 10", Collar Base, Six Ruffle Rosalind Bowl
150. **RARE A - Mlbg. Tracery Lg. Oval Bonbon**
151. G - Mlbg. 8" Low Rd. Mayan Bowl - Radium Beauty
152. **P - Mlbg. Country Kitchen Butter Dish w/Lid (Great Find)**
153. G - Mlbg. 9" ICS, Dome Ftd. Fleur De Lis Bowl - Radium and Nice - Base Flake
154. **P - Mlbg. 9-1/4" Flared, Rd. Peacock Bowl - Radium Blues and Purples**
155. Radium Pastel M - Mlbg. 9-1/2" Rd. Flared Peacock Bowl - Lots of Blues In Center
156. **M - Mlbg. 9-1/2" ICS Zig Zag Bowl - Pinkish Tints In Glass - Different! Wow!**
157. G - Mlbg. Boutonniere Compote - Excellent Radium Example
158. **M - Mlbg. Hobnail Cuspidor - A Great Find and Nice**
159. P - Mlbg. Swirled Hobnail Cuspidor - Multi Electric Beauty
160. **G - Mlbg. 8-3/4", 3 in 1 Edge, Trout and Fly Bowl**
161. A - Mlbg. 8-3/4", 3 in 1 Edge, Trout and Fly Bowl
162. **Aqua - Fenton 6-3/4" ICS Grape and Cable Bowl - Scarce Color**
163. Aqua - Fenton 7-1/4", 8 Ruffle Acorn Bowl - Also Scarce and Pretty
164. **B - Fenton 9" Spat. Ftd., Flat Peacock and Grape Plate - Outstanding Example**
165. P - Fenton 9" Collar Base, 8 Ruffle Peacock and Grape Bowl - Scarce Color
166. **G - Fenton 9" Collar Base, 8 Ruffle Peacock and Grape Bowl**
167. B - 9", 6 Ruffle Orange Tree Bowl - Alluring Reds, Blues and Yellows
168. **B - Fenton 8", ICS Peacock and Urn Bowl - Uncommon Shape**
169. M - Fenton 9-1/4" Peacock and Urn Plate
170. **B - Fenton 9-1/4" Peacock and Urn Plate - Loaded With Color**
171. B - Fenton 9", 8 Ruffle Leaf Chain Bowl - Silver and Gold

- _____ 172. **G - Fenton 9-3/4" Persian Medallion 3 in 1 Edge Bowl - Unusual Size and Shape**
- _____ 173. B - Fenton 7-1/2" Rd. Autumn Acorns Bowl
- _____ 174. **M - Fenton Stream Of Hearts CRE, Ruffled Compote**
- _____ 175. A - Fenton 8-3/4", 3 in 1 Vintage Grape Bowl - Hard to Find Shape and Color
- _____ 176. **A - Fenton 9-1/4", 12 Sided Three Fruits Plate - Above Average**
- _____ 177. Clam - Fenton 9-1/4" Leaf Chain Plate - A Magnificent Piece
- _____ 178. **B - Fenton 9-3/8" Captive Rose Flat Plate - Very Nice**
- _____ 179. M - Fenton Thistle Banana Boat - Waterlily and Cattails Ext.
- _____ 180. **B - Fenton Thistle Banana Boat - Waterlily and Cattails Ext. - A Dandy**
- _____ 181. M - Fenton 9" Collar Base, Low 8 Ruffle Dragon and Lotus Bowl - Great Color
- _____ 182. **Amber - Fenton 8" ICS, Collar Base Dragon and Lotus Bowl - Scarce Color**
- _____ 183. B - Fenton 8" ICS, Collar Base Dragon and Lotus Bowl - Electric Highlights
- _____ 184. **Yellow - Fenton 8-1/4" ICS, Collar Base Dragon and Lotus Bowl - Pastel M. Overlay**
- _____ 185. Red Amberina - Fenton 9", 8 Ruffle, Collar Base Dragon and Lotus Bowl - Rare Base Color
- _____ 186. **Cherry Red - Fenton 8-1/2" Low ICS Dragon and Lotus Bowl**
- _____ 187. True Red Amberina - Fenton Orange Tree Sm. Mug - Spectacular Example
- _____ 188. Rare Red Slag - Fenton 5-1/4" Rd. Sailboats Berry Bowl - Got One?
- _____ 189. B - Fenton 5-3/4", 2 Row OE Basket - Two Sides Up
- _____ 190. **G - Fenton 8-3/4", 6 Ruffle Concord Bowl - Lovely and Desirable**
- _____ 190A. Amethyst - Fenton 7", 6 Ruffle Peacock Tail Bowl - Hard to Find Color
- _____ 190B. Marigold - Fenton 7", 6 Ruffle Lions Bowl - Great Detail, Color, Pattern!
- _____ 191. B - Fenton 6 Ruffle Peacock Tail Compote
- _____ 192. **Rare Blue - Fenton Daisy 4 Sides Up Bonbon**
- _____ 193. M - Fenton Peacock Tail 4 Sides Up Stemmed Bonbon - Uncommon and Nice
- _____ 194. **Rare Blue - Fenton Kittens 3-1/2" Rd. Cereal Bowl**
- _____ 195. M - Fenton Kittens Toothpick Holder - Three Ruffles
- _____ 196. **Scarce B - Fenton Kittens Toothpick Holder - Four Ruffles**
- _____ 197. G - Fenton 6" Tri-Corner Peacock Tail Plate - Scarce Shape
- _____ 198. **G - Fenton 5" Tri-Corner Feathered Serpent Plate - Honeycomb Ext.**
- _____ 199. B - Fenton 6-1/4" Cherry Chain Plate - Orange Tree Ext.
- _____ 200. **B - Fenton 6-1/4" Persian Medallion Plate - Plain Ext.**
- _____ 201. Scarce PO - Dugan 6-3/4" Persian Garden Plate - BW Back - Full Inch of Opal
- _____ 202. **P - Dugan 6-1/2" Wishbone and Spades Plate - Plain Ext.**
- _____ 203. W - Dugan 7-1/4" Grapevine Lattice Plate
- _____ 204. **M - Dugan Question Marks 7" Plate Whimsy from Compote - Georgia Belle Ext. - Great Find**
- _____ 205. PO - Dugan 6-1/2" Four Flowers Plate - Smooth Ext. - 1-1/2" of Opal and Nice!
- _____ 206. **PO - Dugan 6-3/4" CRE Ski Star and Compass Plate - Outstanding Example**
- _____ 207. Rare A - N 6-1/4" 2 Sides Up, Card Tray Davidson's Society Chocolates Plate - Multi Color
- _____ 208. **A - Fenton 6" East Paradise Sodas Plate - Advertising Is Hot Now!**
- _____ 209. Pumpkin M - Fenton Strawberry Card Tray Bonbon
- _____ 210. **M - Mini Serpentine Rose Stippled Creamer - Wonderful Find**
- _____ 211. Celeste B - Fenton Rose Spray JIP Mini Compote
- _____ 212. **M - Fenton Rose Spray Goblet Shape Compote - Super Strike**
- _____ 213. P - N Memphis Punch Cup - Purples and Golds
- _____ 214. **Lime Vas. - Westmoreland CRE, Two Sides Up, Whimsied Daisy Squares Rosebowl - Glows**
- _____ 215. P - Imp. Electric Flute Toothpick
- _____ 216. **M - Fenton Ball Ftd. Giant Stag and Holly Rosebowl - Scarce and Attractive**
- _____ 217. B - Fenton Wreath of Roses Punch Bowl, Base, 5 Cups - Vintage Int. - Great Color, Great Match
- _____ 218. **A - N Wild Strawberry 10" Master Bowl and 6-6" Berry Bowls - Rare as a Set**
- _____ 219. G - N 9" Strawberry Plate - BW Ext. - Lovely Gold and Silver Irid.
- _____ 220. **Super Scarce A - N Basket of Roses Stippled Bonbon - 4 Sides Up - Great Example**
- _____ 221. A - N Spat. Ftd. 9-1/4" Grape and Cable Plate - Meander Ext.
- _____ 222. **Pastel M - N 8-Sides Bushel Basket - Lots of Yellows and Blues Inside**
- _____ 223. B - N Rd. Bushel Basket - High Silver and Gold Finish
- _____ 224. **Pastel M - N Fruits and Flowers Stemmed Bonbon - Yellows and Blues**
- _____ 225. P - N Ftd. 8-1/2" Ruffled Wishbone Bowl
- _____ 226. **M - N Ftd. Ruffled 8-1/4" Wishbone Bowl - Greens and Pinks**
- _____ 227. M - N Ftd. Ruffled 7-3/4" Wishbone Bowl
- _____ 228. **M - N Ftd. Ruffled 7-3/4" Wishbone Bowl - Loaded with Pinks, Yellows, Blues**
- _____ 229. N 9" Rd. Grape and Cable Master Berry Bowl - Astounding Multi-Electric
- _____ 230. **A - N 4-3/4" Rd. Grape and Cable Berry Bowls - Choice A, B, C**
- _____ 231. Beautiful M - N Grape and Cable Butter Dish with Lid
- _____ 232. **G - N Grape and Cable 9-1/2" Centerpiece Bowl - Scarce Color, Points Straight Up, Gorgeous**
- _____ 233. W - N Fine Cut and Roses Ruffled, Ftd. Candy Fish - Chips on Feet
- _____ 234. **W - N 9-1/4" Flat Rose Show Plate - Blues, Pinks and Yellows**
- _____ 235. Ice B - N 8-1/2" PCE Nippon Bowl - Rib Ext. - Loaded with Blues and Pinks
- _____ 236. **Ice G - N 9" Peacocks Plate - Rib Ext. - Blues, Yellows and Pinks**
- _____ 237. W - N 9" Peacocks Plate - Rib Ext. - Lots Of Stretchy Pastels
- _____ 238. **Ultra Rare W - N 9" Peacocks Plate - Rare BW Ext. Splendid Stretchy Rainbow Pastel Colors**
- _____ 239. Elec. Blue - N 9" Peacocks Plate - Rib Ext. - WOW!

331



152



150



177



334



322



96



235



217



185



312



170



336



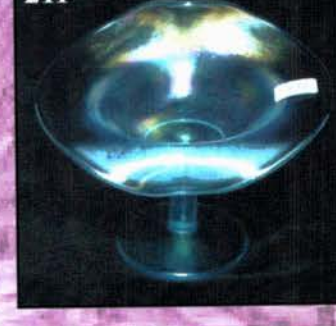
232



160



211



270



128



120



130



125



148



- _____ 240. **Scarce Green - N 8 Ruffle, 9" Peacocks Bowl - Rib Ext. - A Beauty**
- _____ 241. G - **N PCE Peacocks Bowl - Rare BW Ext. - Full Color Peacocks - RARE**
- _____ 242. **B - Fenton Lg. Orange Tree Mug**
- _____ 243. B - Fenton Sm. Orange Tree Mug
- _____ 244. **B - N Singing Birds Mug - Multi Electric**
- _____ 245. M - **N Singing Birds Mug**
- _____ 246. **Deep Purple - N Singing Birds Mug - Electric Highlights**
- _____ 247. A - **N Singing Birds Mug**
- _____ 248. **BA - Dugan Heron Mug - Great Find For The Mug Collector**
- _____ 249. P - Dugan Fisherman's Mug - Radium Silver Finish
- _____ 250. **M - N Knights Templar Dandelion Mug - Great Irid.**
- _____ 251. G - **N Dandelion Mug - Another Prize**
- _____ 252. **M - N Dandelion Mug - Yet Another Beauty**
- _____ 253. M - Imp. 10-1/4" Lg. 6 Ruffle Twins Bowl - Bold Pinks and Blues
- _____ 254. **Scarce M - N Lightning Flower Nappy - Poppy Int. - Great Northwood Find**
- _____ 255. M - Imp. 8", Deep, Rd. Hattie Bowl
- _____ 256. **Teal - Imp. 9-1/4" Scroll Embossed Plate - Radium Finish - Glows**
- _____ 257. M - Imp. Tulip and Cane 5-1/2", 6 Ruffle Bowl
- _____ 258. **Clam - Imp. 9-1/4" Frosted Block Plate - Mkd. Make In U.S.A. - Drowning In Pinks**
- _____ 259. M - Imp. 9-1/4" Scroll Embossed Plate - Multi Radium Beauty
- _____ 260. **P - Imp. 9-1/4" Fantastic Open Rose Plate - Flat, with Lots of Purples**
- _____ 261. M - Fenton 16", 916 Vase - 4-1/2" Pulled Tulip Top - Great Example
- _____ 262. **Pink Marigold - Fenton 12-1/2" Fine Rib Vase - (I know, I know . . . NEAT PASTEL COLOR)**
- _____ 263. W - Fenton 8-3/4" Rustic Vase - Blue and Pink Highlights
- _____ 264. **G - Fenton 11-1/4" Plume Panels Vase - Colorful and Has A Little Spout**
- _____ 265. M - Dugan 8-1/2" Beauty Bud Vase - Color Top To Bottom
- _____ 266. **Dark M - Dugan 8-1/2" Beauty Bud Vase - Top Of The Line**
- _____ 267. G - **N 12-1/2" Mid-Size Thin Rib Vase**
- _____ 268. **M - Jain 9-1/2" Fish Vase**
- _____ 269. Moonstone - Dugan 11-1/4" Pulled Loop Vase - Most Unusual Color
- _____ 270. **Dark B - Fenton 18-3/4" Rustic Funeral Vase - 7" Opening, 5-1/4" Base, Multi Electric Winner**
- _____ 271. M - Fenton Waterlily and Cattails Vt. Tumbler - Rich Color
- _____ 272. **M - Fenton Waterlily and Cattails Vt. 2 Tumbler - Radium and Nice (No BW)**
- _____ 273. M - U.S. Glass Rising Sun Tumbler - Very Desirable
- _____ 274. **A - Mlbg. Feather and Heart Tumbler - Radium**
- _____ 275. M - Mlbg. Feather and Heart Tumbler - Radium - Flat Top Rim Flake
- _____ 276. **Dugan Blue - God and Home Tumbler - Top Notch Example**
- _____ 277. Celeste B - **N Concave Diamonds Tumbler**
- _____ 278. **Honey Amber - U.S. Glass Cosmos and Cane Tumbler - Very Nice**
- _____ 279. B - Western Thistle Tumbler - A Prize for the Tumbler Collections
- _____ 280. **B - Grand Thistle Tumbler - Another Prize - Minor Base Flake**
- _____ 281. Scarce A - Fenton Fluffy Peacock Tumbler - Above Average
- _____ 282. **M - Cut Cosmos Tumbler - Nicely Detailed and A Tough Find**
- _____ 283. M - **N Interior Poinsettia Tumbler - Not Many Out There!**
- _____ 284. **Dark M - Dugan Quill Tumbler - Highly Sought After**
- _____ 285. B - Fenton Orange Tree Scroll Tumbler - Lots Of Blue Highlights
- _____ 286. **Rare M - Fenton Lily Of The Valley Tumbler - They Just Keep Getting Better!**
- _____ 287. Beautiful B - Fenton Blackberry Block Tumbler - Detailed
- _____ 288. **Ice B - N Wisteria Tumbler - The "Cadillac" Of Northwood Tumblers**
- _____ 289. Ice B - **N Wisteria Tumbler - How About Two "Cadillacs"?**
- _____ 290. **W - N Wisteria Tumbler - Or Maybe Three? - A Beauty**
- _____ 291. B - Fenton Milady Tumbler
- _____ 292. **B - Fenton Milady Tumbler - BREATHTAKING Multi Color Iridescence**
- _____ 293. M - Dugan Jewelled Heart Tumbler - Seldom Offered
- _____ 294. **A - Cambridge Inverted Strawberry Tumbler - Excellent Radium Color**
- _____ 295. A - Westmoreland Checkerboard Goblet - Much Rarer Than Tumbler
- _____ 296. **M - Curved Star 6-1/2" Celery Vase - Pedestal Ft. - Color Top To Bottom**
- _____ 297. M - Fenton Sq. 8 Ruffle 7-1/2" Collar Base Grape and Cable Bowl
- _____ 298. **BA - Australian 8-1/2" Banded Diamonds Bowl - Rarely Found In Bowls**
- _____ 299. P - **N 6-1/4", 6 Ruffle Fruits and Flowers Berry Bowl - BW Ext**
- _____ 300. **Sapphire - N 9" Stippled Grape and Cable Vt. Plate - Rib Ext. - Collector's Dream**
- _____ 301. **Cobalt Blue - N 9" Stippled Grape and Cable Vt. Plate - Rib Ext. - Outstanding Example**
- _____ 302. **P - N 9-1/8" Hearts and Flowers Plate - Rib Ext. - Multi Electric**
- _____ 303. A - Fenton 6 Ruffle, 5-1/2" Little Flowers Berry Bowl - **Great Cabinet Piece**
- _____ 304. **G - Fenton 6-Ruffle, 7-1/4" Vintage (Grape) Bowl**
- _____ 305. M - Fenton Ball Ftd. 6" Ruffled Poinsettia & Lotus Bowl
- _____ 306. **G - N 8 Ruffle, 8" Bullseye and Leaves Bowl - Not Often Seen**
- _____ 307. M - Fenton 6 Ruffle, 6" Holly Hat - A Pretty One
- _____ 308. **M - Fenton 6 Ruffle, 6" Persian Medallion Berry Bowl**
- _____ 309. M - Imp. Grape Wine w/Clear Stem
- _____ 310. **RARE RED - Fenton Sq. 8 Ruffle 8-3/4" Orange Tree Bowl - A Prized Find**
- _____ 311. M - **N Grape and Cable Punch Cup - Dark and Nice**
- _____ 312. **RED - Fenton Collar Base, 8 Ruffle 7-1/2" Grape and Cable Bowl - Always In Demand**
- _____ 313. M - Fenton Wreath Of Roses Stemmed Bonbon - 4 Sides Up - Great Detail

314. **Rare Red Slag** - Fenton Lotus and Grape Vt. Card Tray Shape Bonbon
315. A - Fenton Butterfly Bonbon - 4 Sides Up
316. **Totally Red** - Fenton Spat. Ftd., 8 Ruffle, 8" Stag and Holly Bowl - Superb Silver Satin
317. A - Dugan 6 Ruffle 8-1/2" Windflower Bowl - Pretty Example
318. **AO - N Spat. Ftd., 8 Ruffle Three Fruits Medallion Bowl - Meander Ext. - Over 2" of Opal**
319. M - Dugan 10 Ruffle, 8" Apple Blossom Twigs Low Bowl
320. **AO - N Leaf and Beads Rosebowl - Striking Example**
321. Pastel M - N PCE Grape and Cable Bowl - BW Ext.
322. **AO - N Drapery Rosebowl - So Pretty!**
323. G - N 8 Ruffle 7-1/2" Poppy Bowl w/Plain Int.
324. **ICE G - N 9" Ruffled Hearts and Flowers Bowl - Rib Ext. - Lots of Color**
325. M - N 8 Ruffle 7-1/2" Poppy Bowl w/Plain Int.
326. **Ice B - N PCE Nippon Bowl - One Of The Finest!**
327. Celeste B - Pastel Swan Salt
328. **Ice B - N Peacock At Fountain Ruffled Compote - Pl. Ext. - Hearts and Flowers Stem**
329. W - Fenton 6 Ruffle 8-3/4" Leaf Chain Bowl - Rainbow Pastel Irid.
330. **Ice B - N Tri-Corner Drapery Bowl - Quality Item**
331. W - U.S. Glass 4-3/4" Gooseberry Berry Bowl - Palm Beach Ext. - Lovely
332. **Oh So Rare W - Fenton Mirrored Lotus Rosebowl - Scintillating Color**
333. Dark Ice B - N Tri-Corner Drapery Bowl
334. **W - U.S. Glass 3-1/2" Square Gooseberry Whimsey Rosebowl/Hair Receiver? - Palm Beach Ext.**
335. Pastel AO - N Hearts and Flowers Compote - Loaded with Pinks and Blues
336. **W with Lav. Tint - U.S. Glass Palm Beach Spooner - Intriguing and Lovely**
337. P - Westmoreland Strutting Peacocks Creamer and Sugar w/Lids
338. **P - N 9" Three Fruits Plate - BW Ext. - Very Nice**
339. M - Fenton CRE 8-1/4" Stippled Coin Dot Bowl - Neat and Scarce Shape
340. **Dugan Blue - 9" Roundup Plate - Basketweave Ext.**
341. G - Fenton Ruffled, CRE Scotch Thistle Compote - Borders On Teal
342. **Dugan Blue - 9" Flat Fanciful Plate - BW Ext. - A Real Gem**
343. M - Fenton 6 Ruffle 8-3/4" Plain Coin Dot Bowl
344. **Lav. - Fenton 6 Ruffle 8" Stippled Coin Dot Bowl**
345. High Radium M - Dugan Question Marks 4 Sides Up Stemmed Bonbon
346. **Scarce M - Ftd. 8-3/8" Low Ruffled Thistle and Thorn Bowl - Plain Int.**
347. M - Imp. Deep Rd. 6-3/4" Star and File Bowl
348. **M - Fenton 8 Ruffle 7-1/2" Acorn Bowl**
349. M - Fenton 6 Ruffle, 6" Sailboats Bowl
350. **Great M - Imp. 6 Ruffle 6" Twins Bowl - Sweet Little Jewel**
351. G - N 6", 6 Ruffle Smooth Rays Bowl - Really Pretty
352. **G - Fenton Ruffled Pepper Plant Hat**
353. M - LBJ Hat Ashtray

SPECIAL NOTE:

NO SUNDAY CALLS, PLEASE!
Winning Absentee Bidders will be contacted Monday through Wednesday of the week following the Auction!

Thank You!

For Free Color Catalogs & Information Write:
Mickey Reichel

516 Third Street, Boonville, MO 65233-1536
 or Call: 660-882-5292 days or
 660-882-5283 evenings

 E-mail: mreichel@undata.com

2002 CALENDAR

May 4, 2002

HUGE ESTATE ANTIQUE AUCTION
 Held at Boonville Center


June 22, 2002

**SURPRISE CARNIVAL GLASS
 COLLECTION**
 Held at Boonville Center

**NEED QUALITY CARNIVAL GLASS
 FOR SEPTEMBER 14, 2002
 AUCTION AT BOONVILLE**

Wanted QUALITY ANTIQUES

***** ANY TIME *****

 **NEED A FEW MORE (QUALITY)
 PIECES OF CARNIVAL GLASS FOR OCT. 19**
Wichita, Kansas Club Convention

**READY FOR FALL BOOKINGS
 WE DO AUCTIONS RIGHT!!**

THANK YOU FOR ATTENDING TODAY

