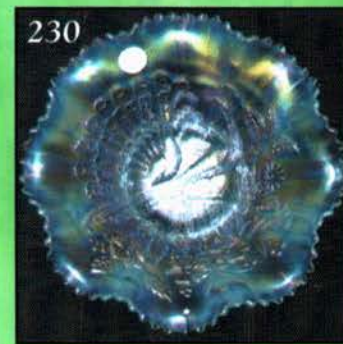
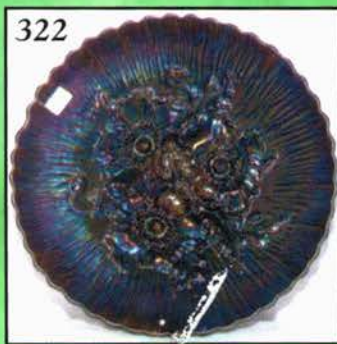
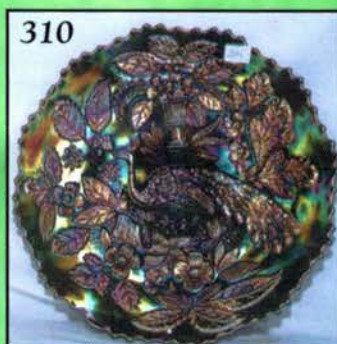
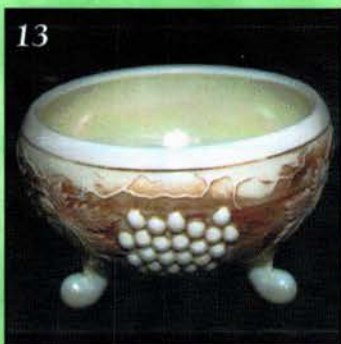


# CARNIVAL GLASS AUCTION

Saturday, March 16, 2002 - 9:00 a.m. C.D.T.

JOE AND DOROTHY BAUR COLLECTION FROM TEXAS



Held By the Mickey Reichel Antique & Auction L.C.

Office: 660-882-5292 • Home: 660-882-5283

Direct e-mail: [mreichel@undata.com](mailto:mreichel@undata.com)

WEB SITES ON: <http://www.yourauctionpage.com/reichel>  
<http://www.glasshunters.com/mr>



# Held Inside the Mickey Reichel Auction Center

1 Mile North of I-70 on Hwy. 5, Exit 101, Boonville, Missouri • 20 Miles West of Columbia, MO on I-70

Preview Friday 12 p.m. - 5 p.m. and 7:30 a.m. - 9:00 a.m. Day of Auction



**TERMS:** Cash or Good Check, VISA and MasterCard accepted.



3% Clerking Fee on all purchases except for payment of cash or check. Proper I.D. required.

**WEB SITES:** [www.yourauctionpage.com/reichel](http://www.yourauctionpage.com/reichel) and <http://www.glasshunters.com.mr>

## ABSENTEE BID POLICY:

**WRITE IN BIDS:** If you are unable to attend the auction, we will be happy to accept absentee bids which must be received by THURSDAY, MARCH 14, 2002. Don't Delay. E-Mail: [mreichel@undata.com](mailto:mreichel@undata.com)

**FOR AUCTION PRICE RESULTS:** Send \$3.00 and Large S.A.S.E. to 516 Third Street, Boonville, MO 65233-1536

**PLEASE NOTE:** There is a **\$5 handling charge for each successful bid which will be added to the selling price** for all write-in bids. This is in addition to the cost of postage, insurance and packing. Your write-in bid will be entered just as if you are present and bidding. **Successful bidders will be notified in 1 to 3 days by the auctioneer (so be sure to include your phone number).** Direct mail bids to Auctioneer Mickey Reichel, 516 Third Street, Boonville, MO 65233-1536. Terms: Cash or Check accepted with proper I.D. and Social Security Number and References. Announcements made day of the auction supercede all printed material. Not Responsible for Accidents or Sold Items.

**No return on any items once they leave the Auction Center (No Exceptions).\*\*\*\***

**Call for additional information: 660-882-5292 days or 660-882-5283 evenings before 9:00 p.m.**

**FAX: 660-882-5292 (evening hours start FAX transmission after beep)**

**MAIL BIDS:** Items are bid on in perfect condition with average or above iridescence OR as listed in the brochures. Bids will not be carried out when damage on an item has been found during the auction.

**PEOPLE PRESENT AT AUCTION ARE RESPONSIBLE FOR FINDING ANY PINHEADS, WEAR, SPOTTINESS, MANUFACTURER'S DEFECTS OR ANY OTHER MINOR FLAWS, ETC. \*\*\*\*\***

**NOTE:** Read each line, as we have accentuated the type of no particular piece, all are special.

**Make Reservations EARLY at one of these local motels:**

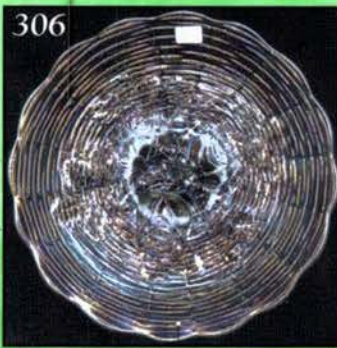
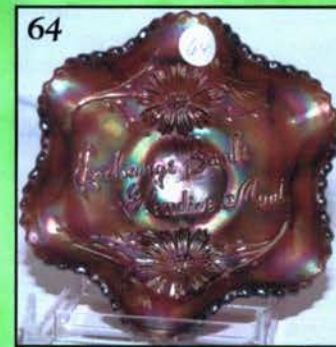
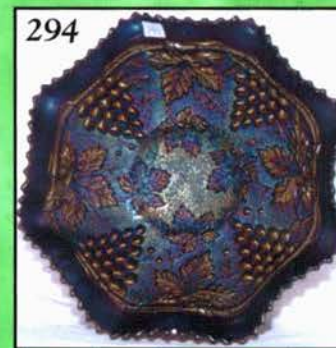
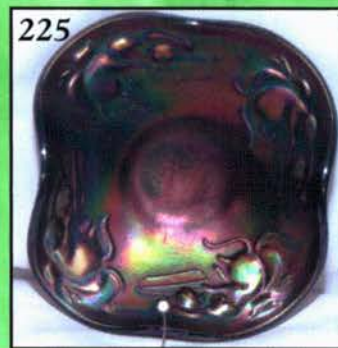
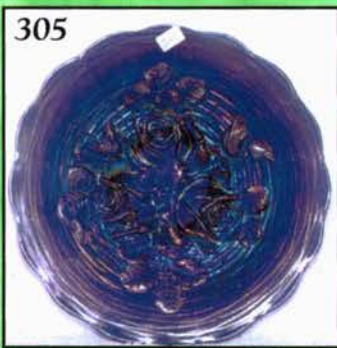
Days Inn: 660-882-8624 • Comfort Inn: 660-882-5317 • Super 8: 660-882-2900

## **Auction Consists of Rarity, Great Irid. and Variety**

### **THANK YOU FOR ATTENDING TODAY**

1. **A - Fenton 9-1/4", 3 in 1 Edge Smooth Coin Dot Bowl**
2. **A - Fenton 9", 3 in 1 Edge Stippled Coin Dot Bowl**
3. **A - N Smooth Rays Card-Tray Bonbon**
4. **M - N Stippled Singing Birds Mug**
5. **Blue Opal - Westm. Estate Breakfast Sugar**
6. **PO - Westm. Estate Breakfast Creamer**
7. **M - Imp. 4-1/4" Propeller Sm. Rd. Compote - Scarce Shape**
8. **B - Fenton 6-3/4", Ruffled Stippled Rays Bowl - Scarce Color**
9. **B - Dugan Peacock at Fountain Vt. Tumbler (7 Beads) - Multi Electric**
10. **B - Dugan Peacock at Fountain Tumbler (6 Beads) - Electric**
11. **M - Fenton Kittens 4-1/2" Plate - Open Bubble In Marie**
12. **M - Fenton Kittens Cup - Sharp Strike**

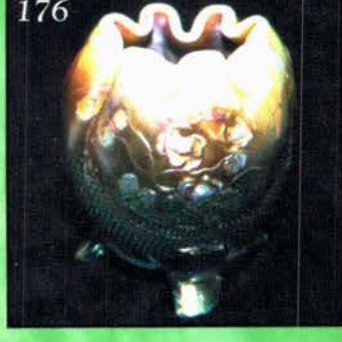
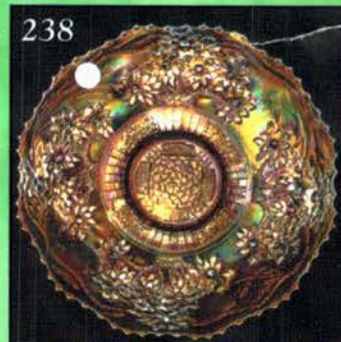
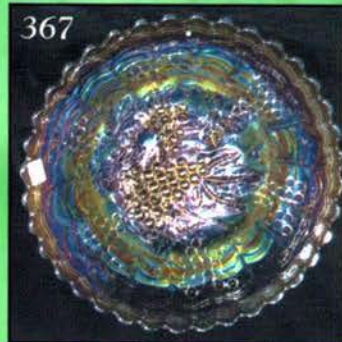
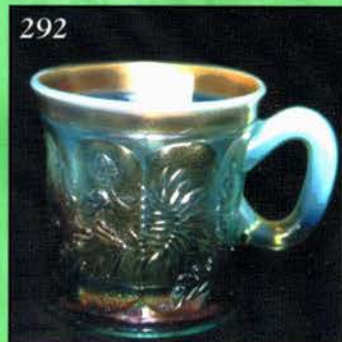
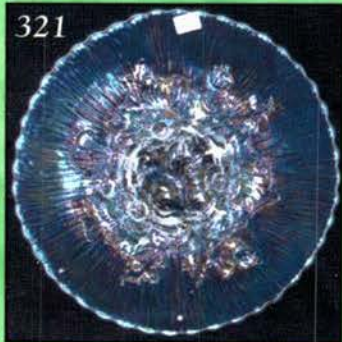
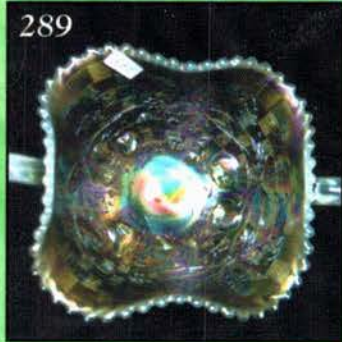
13. **Fantastic Pearlized Custard - N Grape and Cable Giant Rosebowl, Nutmeg Finish, Smooth Rim - No Flames - See Photo!!**
14. **P - Dugan Grapevine Lattice 7-1/4" Plate - Super Iridescence**
15. **Pastel M - Dugan Fishscale and Beads 7" Plate - Awesome Iridescence**
16. **G - Fenton Pine Cone 6-1/4" Flat Plate - Excellent Iridescence**
17. **W - Fenton 7-1/2" Squatty Rustic Vase - Frosty**
18. **Exceptional W - Imp. 10-1/4" Chrysanthemum Chop Plate - Purples, Pinks, Yellows**
19. **M - Fenton 6-1/2" Persian Medallion Plate - Plain Ext.**
20. **M - Imp. 7-1/4" Squatty Beaded Bullseye Vase - 6-1/2" Flare Top, 3-3/8" Base**
21. **G - Fenton 5-7/8" 2-Row O.E. Blackberry Basket - Very Scarce Color**
22. **M - Fenton 9-3/4" Ball Ftd., Ruffled Water Lily Bowl**



23. A - Fenton 8", 8 Ruffle, Spat Ftd Peacock and Grape Bowl - Pretty
24. A - Fenton 8" CRE Vintage (Grape) Bowl - Popular Shape
25. M - Fenton 9", Sq. 8 Ruffle, Collar Base Dragon and Lotus Bowl - A Beauty
26. PO - Dugan 6-3/4", CRE Smooth Rays Plate/Jeweled Heart Ext.
27. PO - Dugan 6-3/8", CRE Ski Star and Compass Plate
28. PO - Dugan 6-1/2", Low 8 Ruffle Cherries Plate? - Jeweled Heart Ext.
29. PO - Dugan Leaf Rays Spade Shape Nappy - 1-1/2" of Opal
30. PO - Dugan Daisy Dear 8", 6 Ruffle Bowl - Lots of Opal
31. PO - Dugan Honeycomb 7" Banana Shape Bowl
32. PO - Dugan Raindrops Dome Base, CRE, 8-3/4" Bowl - Beautiful
33. PO - Dugan Stippled Petals 9", 10 Ruffle, Dome Base Bowl
34. PO - Dugan Dogwood Sprays 9", 10 Ruffle, Dome Base Bowl
35. PO - Dugan Holly Berry 7-3/4", 6 Ruffle Bowl
36. PO - Dugan Holly Berry Tri Corner Nappy
37. PO - Dugan Cherries Ext. 7", CRE, Ftd Bowl - Plain Int.
38. PO - Dugan Bells and Beads 8", 6 Ruffle Bowl
39. PO - N in Script Nautilus Sugar Bowl - Very Nice
40. Clam - Imp. Star and File 6-3/4", Rd. Flared Stemmed Compote
41. Clam - Imp. Pansy Ruffled Pickle Dish
42. Amber - Imp. Pansy Flat Dresser Tray - Scarce Color and Shape
43. Super Amber - Imp. Pansy 9", 8 Ruffle Bowl - Purple Highlights
44. M - Imp. 8" Heavy Grape Plate - Flat and Nice
45. Clam - Imp. Grape 9-1/4" Low Ruffled Plate
46. G - Imp. Acanthus 7" Deep Rd. Bowl
47. G - Imp. Pansy Sugar Bowl - Base Glows
48. G - Imp. Pansy Creamer - Base Glows
49. P - Imp. 9", 8 Ruffle Cobblestone Bowl - Radium Silver and Gold
50. M - Imp. Stretch 7" Flared Bowl - Iron Cross Mark - Gorgeous
51. W - Imp. Stretch 5-3/4" Flared Compote - Iron Cross Mark - Paneled
52. Clam - Imp. Colonial 8-1/2" Rd. Flared Bowl - Iron Cross Mark
53. Clam - Imp. 4-3/4 Rd. Handled Nappy - Iron Cross Mark
54. Soft Amber - Imp. 5-1/2 Rd. Art Stretch Berry Bowl - Iron Cross Mark
55. A - Imp. Stretch 6-3/4" Sq. Crimped Top Bowl - Iron Cross Mark - Heat Flash
56. A - Imp. Stretch 9-1/2" Flat Plate - Iron Cross Mark
57. Vas. - N Stretch 9-1/2" No. 639 Plate
58. Sapphire - N Stretch 9-1/2" No. 639 Plate
59. Celeste - Fenton 8-1/2" Melon Rib Stretch Fan Vase
60. W - Diamond Stretch 8-1/2" Fan Vase - Plate 93
61. Celeste - Fenton Laurel Leaf 4-3/4" Stretch Compote - Very Scarce
62. Celeste - Fenton 3-3/4" Rd. Rose Spray Small Compote - Scarce Shape
63. Clam - Imp. 9" Ftd. Floral and Optic Bowl
64. A - Fenton 6", 6 Ruffle Exchange Bank Bowl - Base Chip - Still a Great Find!
65. Electric B - N PCE Good Luck Bowl
66. Renninger B - N PCE Stippled Good Luck Bowl - Thin Base
67. B - N Ruffled Good Luck Bowl - Rib Ext.
68. Rich M - N Ruffled Good Luck Bowl - Rib Ext.
69. Pastel M - N Ruffled Good Luck Bowl - Rib Ext.
70. M - Imp. 8-1/2" Premium Candlesticks - Pair
71. M - Fenton Florentine 8-3/4" Candlesticks - Pair
72. Russet - N 8-1/2" Trumpet Candlesticks - Pair
73. Sapphire B - N 6-3/4" No. 658 Candlesticks - Pair - Plate 599
74. Russet - N 8-1/2" Florentine Candlesticks - Pair
75. Scarce G - Fenton Holly Sm. Ruffled Compote
76. B - Fenton French Knots 5-1/2" Sq. Ruffled Hat - Scarce Shape and Pattern
77. M - Imp. 6" Ruffled Columbia Compote - Clear Base
78. Smoke - Imp. 9-1/2" Waffle Block Handled Basket - Scarce and Pretty
79. B - Art Glass Nugget Design 4-1/2" Tumbler Shape Vase?
80. B - Art Glass Swirl Design 4-1/2" Tumbler Shape Vase?
81. G - Cambridge Double Star Water Pitcher - Radium and Nice
82. M - Dugan Vineyard Water Pitcher - Dark, Rich Color
83. M - Dugan Grapevine Lattice Tankard Water Pitcher
84. Frosted W - N Victorian Decorated Tankard Water Pitcher - Non Irid.
85. B - Fenton Forget-Me-Not Enamel Decorated Tankard Water Pitcher
86. Ice G - Fenton Dianthus Enamel Decorated Tankard Water Pitcher
87. W - N Frosty Grape Arbor Tankard Pitcher - Stretchy Around Top
88. W - Fenton Shasta Daisy Zig-Zag Enamel Decorated Water Pitcher
89. Fantastic M - Imp. Poinsettia Milk Pitcher - Electric
90. RARE Lav. - Imp. 474 Milk Pitcher - 1 of 3
91. Sapphire B - N Victorian Enamel Decorated 7 pc. Water Set
92. Sapphire B - N Lily of the Valley Enamel Decorated 6 pc. Water Set
93. M - Fenton Ftd. Orange Tree 7 pc. Water Set - Normal Chips on Feet - Nice Set!
94. B - Fenton Orange Tree Scroll Tankard Water Pitcher - Great Find!
95. M - Fenton Freesia Enamel Decorated Tankard Water Pitcher
96. RARE W - Dugan Heavy Iris Tankard Water Pitcher - Radium Beauty
97. M - N Swirl Rib Vt. #2 Tankard Water Pitcher
98. G - N Swirl Rib Vt. #1 Tankard Water Pitcher - Alaskan Iridescent Treatment
99. M - N Interior Swirl Bulbous Cider Pitcher - Rare Shape
100. P - Mlbg. Hanging Cherries Water Pitcher - Super Detail and Color
101. P - N Grape and Cable Tobacco Jar w/Lid - Astounding Color, best I've seen - One prong missing, but so what?
102. RARE FIND! M - Imp. (Old) Hobstar Nu-Cut Vase
103. Dark M - Imp. Loganberry Vase - Super Example
104. Teal - Imp. Loganberry Vase and It Is Beautiful - Base Glows
105. Frosty W - Fenton 10-3/4" Rustic Vase
106. M - Imp. 5-1/2" Thin Rib and Drape Vase - A Little Beauty
107. M. Flashed - Enamel Decorated 8-1/2" Spanish Moss Vase - Sometimes Called Burning Tree

108. M - Jain 8-1/4" Right Handed Hand Vase - Excellent Detail
109. Vas. - Dugan 6" Stippled Estate Vase - A Dandy
110. AO - N 10-1/2" Four Pillars Vase - Butterscotch Overlay - Toe Chip
111. Teal - Westm. 9-3/4 Corinth Vase
112. RARE Sapphire - N Squatty 7" Fine Rib Vase - Base Crack - Still Super Item
113. Pearlized - Phoenix/Consolidated 9" Pine Cone Decorated Vase
114. Pearlized - Phoenix/Consolidated Quilted Diamond Covered Jar - Pine Cone Decoration
115. Pearlized - Loetz Large Diamond Point Rosebowl with Wire Top
116. M - Dugan Optic 9" Vase
117. Aqua - Dugan Stippled Estate 6" Vase - Beautiful Item
118. G - N 9" Tree Trunk Vt. Vase - Starred Base
119. Smoke Flashed - Imp. 5-3/4" Colonial Whimsey Vase - Very Unusual
120. RARE Smoke - N 9-3/4" Thin Rib Vase - Rich Smoke Color!
121. P - Imp. Squatty 8" Beaded Bullseye Vase - 6-3/4" Wide Mouth Beauty
122. AO - N Daisy and Drape Vase, Flared Top - Butterscotch Overlay
123. Scarce B - Dugan 11-1/2" Target Vase
124. Teal - Westm. 8" Corinth Vase - Glows Wildly
125. M - Fenton Rustic 18" Swung, Twisted Mid-Size Vase - 4" Base - Great Eye Appeal
126. Sapphire B - Diamond Glass Stretch Candy Jar with Lid - Plate 60
127. Opaque Jade Blue - N Stretch Glass 5-1/4" Rolled Edge Bowl w/Black Base
128. Dark Blue Violet - Dugan 10-1/4" Royal Lustre Ice Cream Bowl w/Black Base
129. Ice G - Fostoria Brocaded Palms 2-Handled Bonbon - Great Gold
130. Golden Pansy - Finnish 4-1/2" Rd. Bowls - Intaglio Design - Choice A or B
131. Golden Plum - Finnish 4-3/4" Rd. Bowls - Intaglio Design - Choice A or B
132. Golden Pansy - Finnish 5-3/4" Oval Pin Dish with Intaglio Design
133. M - Golden Oxen 5-1/4" Tall Mug - Scarce! - Great Color, Unknown Maker
134. Lime Vas. - Fenton Small Rib Whimsey Spittoon - Neat Item
135. PO - Westm. Orange Peel 4-1/2" Whimsied Compote
136. M - Dugan Ruffled Rib Tri-Corner Whimsied Spittoon - Rare Shape
137. M Flashed - Baby Face Toothpick Holder - Adv. Buffalo, Minn.
138. BA - Heart and Cross Hatpin
139. W - Painted Rooster Hatpin
140. Lav. - Painted Rooster Hatpin
141. Red - Painted Rooster Hatpin
142. Teal - Painted Rooster Hatpin
143. B - Painted Rooster Hatpin
144. BA - Basket Flower Hatpin
145. B - N 9" Stippled Three Fruits Plate - Rib Ext. - Super Electric Highlights
146. M - N Stippled Three Fruits Plate - Rib Ext. - Another Favorite
147. Pastel M - N 9" Three Fruits Plate - Plain Ext. - Super Item
148. RARE G - N PCE Stippled Three Fruits Bowl - Collar Base
149. G - N 9" Stippled Grape and Cable Vt. Plate - Rib Back - Blues, Pinks, Golds
150. G - N Advertising Old Rose Distillery Stippled Grape and Cable Vt. Plate - The Best!
151. B - Fenton Orange Tree Orchard Tumbler - Way Above Average
152. W - Single Lily Art Glass Epergne - EPNS Holder
153. W - Nautilus Toothpick Holder - Age Unknown
- 154A. M - Dugan Grapevine Lattice Tumbler
154. W - Fenton Banded Shasta Daisy Tumblers - 2 for 1 - As Found
155. W - N Grape Arbor Tumbler
156. Ice G - Fenton Crocus with Prism Band Vt. Tumbler - Gilt Decorated
157. Clear - Enamel Decorated Non-Iridized Tumbler
158. W - Fenton Persian Medallion Rosebowl
159. Great W - Fenton Pond Lily Card Tray Shape Bonbon - Vibrant Blues
160. W - U.S. Glass Palm Beach Ext./Gooseberry Int. Rosebowl w/Gold Trim
161. W - Fenton 9-3/4" Ruffled, Ftd. Orange Tree Master Berry Bowl
162. W - U.S. Glass Cosmos and Cane 10" Low Ruffled Bowl - Lavish Iridescence - Tiny Heat Check on Base
163. W - U.S. Glass Diamond and Daisy Cut Open Sugar/Spooner? - Unique Offering
164. W - N 8-Sided Bushel Basket - Frosty and Pretty
165. W - N Peach Tumbler - Minor Marie Roughness
166. W - Dugan Persian Garden 11" ICS Bowl - Fantastic Irid. - Flake off Point
167. Outstanding W - Dugan Persian Garden 5-3/4" ICS Berry Bowl
168. W - Dugan Persian Garden 11" Ruffled Fruit Bowl - Rim Nick
169. W - Dugan Grapevine Lattice 7" Low Ruffled Plate - Beautiful Irid.
170. W - Dugan Double Stem Rose 10 Ruffle, Dome Base Bowl - Blues and Yellows
171. W - Fenton 8-3/4", 6 Ruffle Leaf Chain Bowl
172. W - Dugan Fanciful 9", 3 in 1 Crimp Bowl - Tooth Nicked
173. W - Persian Medallion Rosebowl - A Dandy!
174. Ice B - N Fine Cut and Roses Rosebowl - Fancy Int. - Toe Chip
175. G - N Fine Cut and Roses Rosebowl - Plain Int. - Minor Toe Roughness
176. RARE AO - N Fine Cut and Roses Rosebowl - Fancy Int. - Polished Feet
177. Dark Ice B - N Beaded Cable Rosebowl - Very Scarce
178. Lime G - Westm. Daisy Squares CRE Stemmed Rosebowl/Whimsey Spittoon?
179. M Flashed - Double Bottle Cordial Set In Gilt Frame with Four Tiny Cups
180. M - Enamel Decorated 12" German Stein - Rarely Seen or Offered
181. M - Enamel Decorated 11" German Stein - Rarely Seen or Offered
182. M - Enamel Decorated 10" German Stein - Rarely Seen or Offered
183. M Flashed - Vinegar Cruet
184. M - Miniature Salt and Pepper Thanksgiving Turkey Set??
185. M - Novelty Mini Daisy and Button Witches Pot - Neat
186. M - Novelty Mini Daisy and Button Top Hat
187. M - Novelty Mini Daisy and Button Footed Ashtray

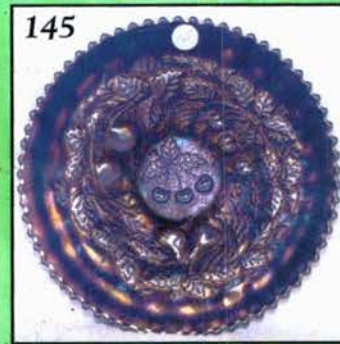
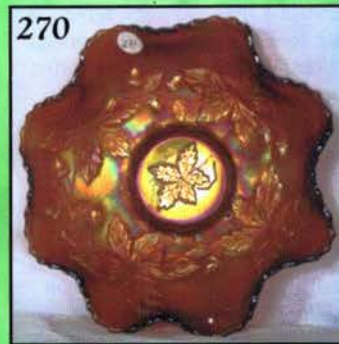
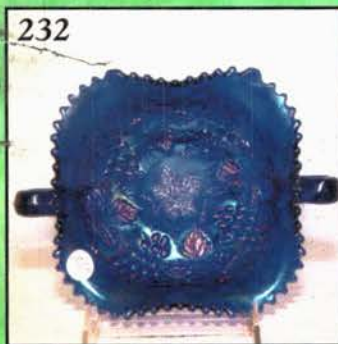
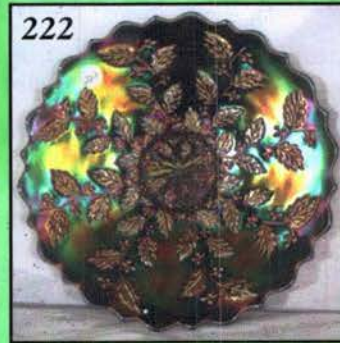
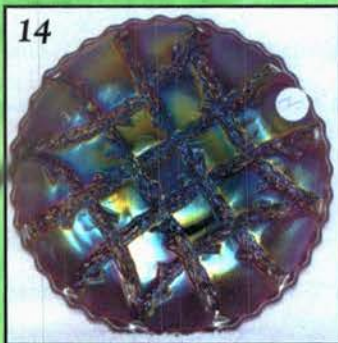
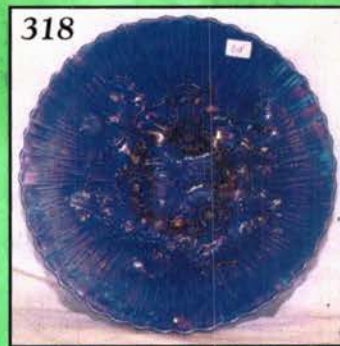
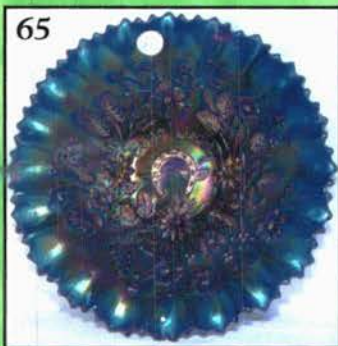




188. M - Novelty Mini Daisy and Button Victorian High Heeled Shoe
189. M - Novelty Mini Daisy and Button Canoe Candy Container
190. M - Novelty Mini Daisy and Button Roller Skate Slipper
191. M - Novelty Mini Coal Bucket - Mkd: Souvenir Comfrey, Minn.
192. M - Novelty Mini Daisy and Button Rim Witches Pot
193. M - Novelty Mini Figural Dog Candy Container
194. M - Novelty Mini Bulldog Paperweight - Nick on Paw
195. Clear Miniature Scotty Paperweight - Non-Irid.
196. RARE - M Flashed - Libby's Maize Corn Cruet - No Stopper
197. M - Imp. Corn Bottle - Super Example
198. M Flashed - Curtain Weights - 4 x \$
199. Red - Imp. Fishnet and Grapes 6" Vase - Stunning Color!
200. Red - Imp. Fishnet and Rose 6" Vase - Also Wonderful!
201. Ruby Flashed - Novelty Tomahawk - Clear Handle - Mkd: Souvenir Rochester, Minn.
202. Ruby Flashed - Oval Hairpin Box - Mkd: Lelyer Brock Fair 1908
203. Clear with Red Flashed - Bullseye Pattern Glass Miniature Lamp
204. Lime Vas. - Pastel Swan Salt - Glows!
205. Celeste B - Pastel Swan Salt
206. G - Cambridge Small Buzz Saw Cruet - Cork Stopper
207. G - Signed IG 3 in 1 Pattern Toothpick Holder
208. M Flashed (Light) - Syrup Pitcher with Metal Lid
209. M Flashed - Wheelbarrow Ashtray - 4" by 5"
210. M Flashed - Elephant Bookends - Choice A or B
211. P - Dugan JIP, CRE Twigs 4-3/8" Vase - A Little Beauty
212. Electric B - N Drapery Vt. 8-3/4" Vase
213. Pumpkin M - N Drapery 7-3/4" Vase
214. Sapphire Base - Fenton 9" Butterfly and Berry Vase - May Be One Of A Kind
215. PO - Fenton 8-3/8" Fine Rib Vase - One Of Three Known - Fantastic Find!
216. Sapphire Base - Fenton 9-3/8" Fine Rib Vase - Another Great One
217. Red - Fenton 11-5/8" Fine Rib Vase - Scarce This Tall
218. Ice B - N 11-3/8" Diamond Point Vase
219. A - Mlbg. 9-3/4" ICS Blackberry Wreath Bowl - Radium and Great Detail
220. Super Radium M - Mlbg. 9-1/2" ICS, Collar Base Fleur De Lis Bowl - WOW!
221. A - Mlbg. 7-3/4", 6 Ruffle Courthouse Bowl - Radium with Outstanding Color and Detail
222. Blue - Fenton 10" Flat Holly Plate - Great Multi Electric Example
223. Moonstone - Fenton 9-1/4", 3 in 1 Edge Holly Bowl - Few Known and First-Rate Example
224. Dark AO - Fenton 6" JIP, CRE Blackberry Spray Hat - Top of the Line
225. B - Fenton 4-1/2" Kittens 4 Ruffle Bowl - Great Iridescence
226. P - N 10-1/4" ICS Peacock at Urn Bowl - Extra Nice
227. P - N 5-1/2" ICS Peacock at Urn Bowl - Choice A, B, C, D, E
228. ULTRA RARE Marigold Opal - N 8-3/4" Ruffled Strawberry Bowl - BW Ext. - Exceptional
229. Smoke - N PCE Strawberry Bowl - Smooth Ext. - Great Rainbow Iridescence on this Northwood Rarity
230. Great Ice B - N Ruffled Peacocks Bowl - Rib Back - Blues, Yellows & Pinks
231. Horehound - N Ruffled, Stippled Strawberry Bowl - BW Ext. - Outstanding and Rare
232. Electric B - N Grape and Cable 4 Sides Up Bonbon - This Is The One!
233. Near Emerald G - N Butterfly Bonbon - Smooth Ext. - A Keeper
234. Crystal - Shriners 6" Los Angeles 1906 Plate - Great Detail
235. Red - Fenton 7", 2 Row O.E. Blackberry Hat - 2 Sides Up - Super
236. Scarce M - Imp. File Tumbler
237. Smoke - Imp. Rococo 6" Ruffled Bowl - Multi Color Irid.
238. Rich M - Fenton 9-1/4" Orange Tree Plate with Trunk Center - Tremendous Color
239. Pumpkin M - Fenton Lg. Orange Tree Mug - 3" Base, 3-1/2" Top
240. Pumpkin M - Fenton Orange Tree Mug - 2-1/2" Base, 3-1/4" Top
241. W - Fenton 9-1/4" Peacock at Urn Plate - Way Above Average
242. Pastel M - N 9-3/8" Three Fruits Plate - BW Ext - Blues, Yellows and Pinks
243. Clam - Imp. 11-1/4" Rd. Flared Waffle Block Master Bowl
244. G - Fenton 8-3/4", 3 in 1 Edge, Stippled Coin Dot Bowl
245. B - Fenton 8-3/4", 3 in 1 Edge Captive Rose Bowl - Popular Shape
246. Halloween 5-1/4" Rd. Covered Candy Dish with Lid
247. Pearlized W - Cased Art Glass Large Rosebowl with Wire Frog - 5-1/4" Rd.
248. W - 3-1/4" Tall Novelty Barrel Shaped Piece with Brass Bands - Different
249. Flashed M - Single 5-1/4" Rd., Low Candleholder with Gold Band
250. Lavender Base - 5-1/4", 8 Sided Compote with White Frosty Iridized Top - Unknown Pattern
251. Electric P - Imp. 6-1/4" Heavy Grape Bowl
252. PO - Dugan 6-1/2" CRE Question Marks Plate/Compote?
253. W - Dugan 7" Low Ruffled Fishscale and Beads Bowl - Super Irid
254. Dark P - Dugan 7" Tri Corner Bells and Beads Bowl
255. M - Fenton 4-1/2" Kittens Plate - Outstanding Irid.
256. Lime Ice G - N Grape and Cable Punch Cup - Rare and Lovely
- ATTN: GREAT VASELINE COLLECTION**
257. Vas. - Fenton Spat Ftd. 7-1/2", 8 Ruffle Peacock and Grape Bowl
258. Vas. - Fenton Ruffled Holly Compote
259. Vas. - Fenton Ball Ftd. 7-3/4", Scalloped, Flared Grape and Cable Bowl
260. Vas. - Fenton 7-1/2", 8 Ruffle, Collar Base Grape and Cable Bowl
261. Vas. - Fenton Leaf Chain 6-1/4" ICS Bowl
262. Vas. - Fenton 7", 6 Ruffle Vintage (Grape) Bowl
263. Vas. - Fenton Two Flowers 6", 6 Ruffle Ball Ftd. Bowl
264. Vas. - Fenton Lotus and Grape Vt. Four Sides Up Bonbon
265. Vas. - Fenton Persian Medallion Four Sides Up Bonbon
266. Vas. - Fenton Fine Rib 12" Vase - 4-1/4" Flame Top
267. Vas. - Fenton Fine Rib 10" Vase - Flame Top



268. Vas. - Fenton Peacock at Urn 8-1/4", ICS Bowl - Few Known
269. Vas. - Fenton Thistle 8-1/2", 8 Ruffle Bowl - Rare Color
270. Vas. - Fenton Autumn Acorns 9" Sq. 8 Ruffle Bowl - Outstanding
271. Vas. - Fenton Holly 9", 3 in 1 Edge Bowl - Popular Shape
272. Vas. - Fenton Holly 9", Sq. 8 Ruffle Bowl - WOW!
273. Vas. - Fenton Holly 6", 6 Ruffle Hat
274. Vas. - Fenton Water Lily 6", 6 Ruffle, Ball Ftd. Bowl
275. Vas. - Fenton Acorn 6-1/4", Deep Rd. Bowl - Rare Color
276. Vas. - Fenton Acorn 6-3/4", Rd. Flared Bowl - Rare Color
277. Vas. - Fenton Acorn 7", Low ICS Bowl - Rare Color
278. Vas. - Dugan Daisy Dear 7", 8 Ruffle Bowl - Totally Scarce
279. Vas. - Fenton Grape and Cable 7-1/2" Sq. 8 Ruffle Bowl - Superb
280. Vas. - Imp. Grape Wine - Few Found, Got One?
281. Vas. - Fenton Strawberry 4 Sides Up Bonbon - Rich Irid.
282. Vas. - Fenton Blackberry Spray Ruffled Hat - Only Two Sets of Berries
283. M - Fenton 12", Ball Ftd. Stag and Holly Chop Plate - Super! - Flawed Tip - So?
284. Scarce Amberina - Fenton Little Flowers 9-1/2", 8 Ruffle Bowl - 1" Smoky Red Border - Most Unusual
285. Scarce G - N 9" Peacocks Plate - Gorgeous Interior, Light Irid on Rib Ext.
286. Fantastic Pastel M - N 9" Grape and Cable Stippled Vt. Plate - Rib Ext.
287. Electric P - N 7-3/4" Wild Strawberry Handgrip Plate - Unreal Color!
288. Pastel AO - N Hearts and Flowers Compote - Great Irid.
289. Pastel AO - N Fruits and Flowers Stemmed Bonbon - Very, Very Pretty
290. Rare Ice G - N Fruits and Flowers Stemmed Bonbon - Beautiful Color
291. Pastel AO - N Ruffled Peacocks Bowl - Rib Ext. - Always In Demand
292. AO - N Dandelion Mug - Soft Butterscotch Overlay
293. Aqua - Fenton Ftd. Fruit Bowl - Persian Medallion Int/Grape and Cable Ext. - Rare and Wonderful
294. P - N Grape and Cable Stippled Vt. 10" Sq. 8 Ruffle Bowl - BW Ext. - Electric
295. Pumpkin M - N Grape and Cable Hatpin Holder - First Rate!
296. G - N Grape and Cable Hatpin Holder - Borders on Emerald
297. Dark M - N Corn Vase - Plain Base
298. G - N Corn Vase - Stalk Base
299. P - N Corn Vase - Stalk Base
300. Lime G - N Corn Vase - Stalk Base
301. W - N Corn Vase - Stalk Base
302. Rich M - N Rose Show Ruffled Bowl - Hot Pinks Galore
303. M - N Rose Show 9-1/2" Flat Plate - Lays Down Nicely
304. Soft A - N Rose Show 9-1/4" Plate - Vibrant Multi Color Iridescence
305. B - N Rose Show 9-3/8" Plate - Electric Center
306. W - N Rose Show 9-1/4" Plate - Blues and Pinks
307. Vas. - Fenton Acorn 7-1/4", Sq. 8 Ruffle Bowl
308. Vas. - Fenton Peacock and Grape 8-3/4" Low Rd. Bowl/Plate? - 2" Off Table
309. M - Fenton 9-1/4" Pony Plate - Radium Beauty - Believed Old
310. B - Fenton 9-3/8" Peacock at Urn Plate - Enticing Multi Electric Irid.
311. B - Fenton 8-1/2" Peacock at Urn ICS Bowl - Top Notch
312. Soft A - Mlbg. 8-3/4" Peacock at Urn Mystery Bowl
313. Radium A - Mlbg. 5-1/4" Deep, Rd. Flared Peacock Proof Bowl
314. Lime Vas. - Imp. Lustre Rose 8", 6 Ruffle, Ftd. Bowl - Looks Ice Green
315. PO - Dugan Folding Fan 6-1/2", CRE, Ruffled Compote - Great!
316. Lime Green Pastel - N Poppy Show Ruffled Bowl - One Of Two Known
317. W - N Poppy Show Ruffled Bowl - Blue and Pink Highlights
318. B - N Poppy Show 9-1/4" Plate - Electric Highlights
319. G - N Poppy Show 9" Plate - Greens, Blues and Yellows
320. M - N Poppy Show 9-1/4" Plate - Pinks, Blues and Yellows
321. W - N Poppy Show 9-1/4" Plate - Blues and Pinks Galore
322. P - N Poppy Show 9-1/4" Plate - Great Multi Electric
323. A - N Peacocks 9-1/4" Plate - Rib Ext. - Purples and Golds
324. B - Fenton Thistle 8-3/4" Ruffled Bowl
325. Renninger B - N Peacocks 9" Plate - Thin Base, Rib Ext.
326. M - N Grape and Cable Dresser Tray - Radium Pink and Blue
327. Lav. Horehound - N Grape and Cable 6-1/4" Handgrip Plate - Two Base Chips
328. Lav. Horehound - N 8-3/4", Dome Base, Ruffled Three Fruits Bowl - Super Find!
329. Lime G - N Grape and Cable Breakfast Creamer - Very Rare Find
330. M - N Acorn Burrs Tumbler
331. Celeste B - N Concave Diamonds Tumbler
332. M - N Beaded Cable 7-1/2", Ftd., Ruffled Candy Dish - Smooth Rays Int.
333. G - N Beaded Cable 7-1/2", Ftd., Ruffled Candy Dish - Smooth Rays Int.
334. M - N Flute 8-7/8" Plate - First I've Seen, Very Pretty
335. Clear Base - N Grape and Cable PCE Bowl - BW Ext. - Silver Satin Irid.
336. Teal - Fenton Grape and Cable 8", 8 Ruffle, Ball Ftd. Bowl - Scarce Color
337. M - Fenton Lotus and Grape Vt. 6" Rd. Ball Ftd. Bowl
338. Amber - Imp. Stippled Rays and Scale Band 5-3/4" Dome Ftd. Bowl
339. Aqua - Fenton Holly 6-3/4", 4 Sides Up Hat - Scarce Color
340. Aqua - Fenton Grape and Cable 6" Deep, Rd. Bowl - Scarce Color
341. Aqua - Fenton Acorn 6-1/4" Deep, Rd. Bowl - Near Sapphire
342. Sapphire Base - Fenton Sailboats 6" Ruffled Bowl
343. Red Amberina - Fenton Sailboats 6" Ruffled Bowl
344. Amber - Fenton 6" Blackberry Spray Ruffled Hat - Reddish Hue
345. Amber - Fenton Dragon and Lotus 8" ICS, Collar Base Bowl



346. Pastel Powder B - Fenton Orange Tree 8" ICS Bowl - Unusual Color
347. G - Fenton Persian Medallion 8" Deep, CRE Bowl - Different Shape, Nice Irid!
348. Lav. - Mlbg. Blackberry Wreath 6", 3 in 1 Edge Bowl - Satin
349. G - Mlbg. Holly Sprig Spade Shape Nappy - Radium
350. P - Dugan Honeycomb 5-3/4" CRE, Deep Bowl - Electric Irid.
351. M - N Intaglio Strawberry 9-3/4" ICS Bowl - A GREAT EXAMPLE
352. G - Cambridge Inverted Strawberry 6-1/4" Near-Cut Bowl
353. Clear Base - Dugan Fanciful ICS 8-1/2" Low, Low Bowl - Silver Satin Irid.
354. Shriners 1909 Louisville, Ky. Tobacco Base Champagne
355. G - Fenton Pebbles 2 Handed Card Tray Shape Bonbon - Honeycomb and Clover Ext.
356. M - Dugan Golden Harvest Decanter
357. M - Dugan Golden Harvest Wines - Choice A or B
358. M - Dugan Daisy Dear 7" Ruffled Hat
359. Lav. Ice - Fenton Pond Lily Bonbon - RARE - Lg. Chip On Marie
360. White Opal - Fenton 11-1/2" Waterlily and Cattails Chop Plate - Non-Irid.
361. M - Cambridge Inverted Strawberry Sugar Bowl Lid - Base Present, But Cracked
362. B - Fenton Orange Tree 9" Plate with Trunk Center - Super Pretty - Flawed Tip
363. W - Fenton? Stemmed Compote - Two Sides Up - No Pattern
364. P - N Blackberry Compote - BW Ext. - Nice Item
365. P - Imp. Grape 10-1/2", 8 Ruffle Multi-Electric Bowl
366. P - Imp. Grape 8-5/8" Ruffled Bowl - A Screamer!
367. Smoke - Imp. Grape 10-1/4" Rd. Flared Out Bowl - Super Pastel Irid.
368. Clam - Imp. Grape 5" ICS Bowl - A Little Cutie
369. Pumpkin M - Imp. Heavy Grape 9" Flared Bowl - Outstanding
370. Rich M - Imp. Heavy Grape 8-1/4" Plate - Radium Dandy
371. Teal - Imp. Heavy Grape 7", Fancy 8 Ruffle Bowl - Base Glows
372. M - Imp. Heavy Grape 6-3/4" Fancy 8 Ruffle Bowl
373. Amber - Imp. Pansy Oval Relish Dish
374. M - Imp. Hobstar Flower Ruffled Compote - Radium
375. Radium Electric P - Imp. Ripple 8-1/2" Vase
376. M - Imp. Ripple 8" Vase
377. Smoke - N Rd. Bushel Basket - Rare Find
378. Ice G - N Rd. Bushel Basket - Scarce Color
379. M - Dugan Fisherman's Mug - Radium Pinks and Blues
380. P - Fenton Pony 9-1/4" Plate - Old or New? - It's A Beauty

*A Big Thank You To Everyone for your cards, e-mails, prayers and concern I received after and before my surgery. I'm doing fine because of all of you.*

*Mickey*

## **SPECIAL NOTE:**

**NO SUNDAY CALLS, PLEASE!**  
**Winning Absentee Bidders will be contacted Monday through Wednesday of the week following the Auction!**

**Thank You!**

**For Free Color Catalogs & Information Write:**

**Mickey Reichel**

**516 Third Street, Boonville, MO 65233-1536**

**or Call: 660-882-5292 days or**

**660-882-5283 evenings**

**E-mail: mreichel@undata.com**

**THANK YOU FOR ATTENDING TODAY**



## **2002 CALENDAR**

**April 13, 2002**

**SMITHEE COLLECTION**

Held at Boonville Center

**May 4, 2002**

**HUGE ESTATE ANTIQUE AUCTION**

Held at Boonville Center

**May 18, 2002**

**THE ARMS COLORADO COLLECTION**

Held at Boonville Center

**June 22, 2002**

**SUPRISE COLLECTION**

Held at Boonville Center

**Wanted QUALITY ANTIQUES**

**FOR JULY EXTRAVAGANZA  
 BOOKING NOW!**

**READY FOR FALL BOOKINGS**

**WE DO AUCTIONS RIGHT!!**

**MICKEY REICHEL**  
**ANTIQUE & AUCTION, L.C.**  
516 THIRD STREET  
BOONVILLE, MO 65233-1536

PRESORTED  
FIRST CLASS MAIL  
US POSTAGE PAID  
SEDALIA, MO  
PERMIT 217

RETURN SERVICE REQUESTED

FIRST CLASS MAIL  
SPECIAL INVITATION TO:

211



15\*2\*\*\*\*\*ALL FOR ADC 460  
LEE MARKLEY  
PO BOX 306  
MENTONE, IN 46539-0306



198



137



95



298



89



213



117



197



100



235

