

# CARNIVAL GLASS AUCTION

Saturday, February 23, 2002 9:00 a.m., C.D.T.

Randy Palmer Collection

199



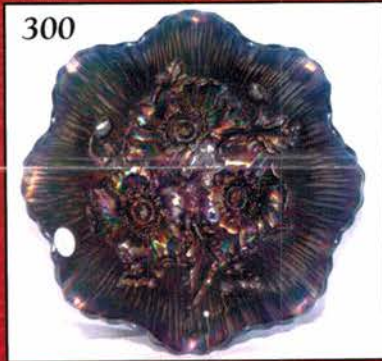
325



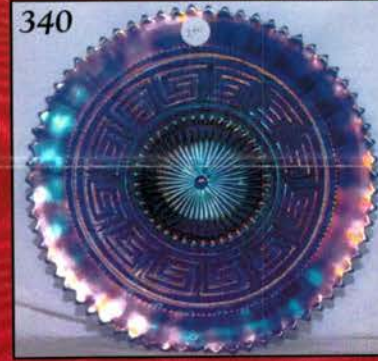
201



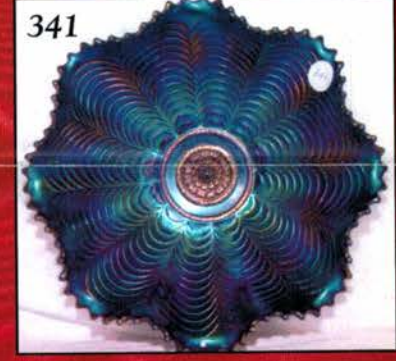
300



340



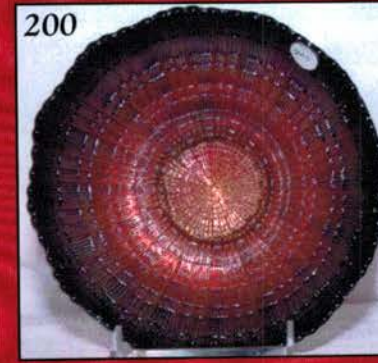
341



270



200



339



Held Inside the Mickey Reichel Auction Center, Boonville, Missouri

Office: 660-882-5292 • Home: 660-882-5283

Direct e-mail: [mreichel@undata.com](mailto:mreichel@undata.com)

NEW WEB SITE ON: <http://www.yourauctionpage.com/reichel>



# Held Inside the Mickey Reichel Auction Center

1 Mile North of I-70 on Hwy. 5, Exit 101, Boonville, Missouri • 20 Miles West of Columbia, MO on I-70

Preview Friday 12 p.m. - 5 p.m. and 7:30 a.m. - 9:00 a.m. Day of Auction

**TERMS:** Cash or Good Check, VISA and MasterCard accepted.



**3% Clerking Fee** on all purchases except for payment of cash or check. Proper I.D. required.

**WEBSITE:** [www.yourauctionpage.com/reichel](http://www.yourauctionpage.com/reichel)

## **ABSENTEE BID POLICY:**

**WRITE IN BIDS:** If you are unable to attend the auction, we will be happy to accept absentee bids which must be received by THURSDAY, FEBRUARY 21, 2002. Don't Delay. E-Mail: [mreichel@undata.com](mailto:mreichel@undata.com)

**FOR AUCTION PRICE RESULTS:** Send \$3.00 and Large S.A.S.E. to 516 Third Street, Boonville, MO 65233-1536

**PLEASE NOTE:** There is a **\$5 handling charge for each successful bid which will be added to the selling price** for all write-in bids. This is in addition to the cost of postage, insurance and packing. Your write-in bid will be entered just as if you are present and bidding. **Successful bidders will be notified in 1 to 3 days by the auctioneer (so be sure to include your phone number).** Direct mail bids to Auctioneer **Mickey Reichel, 516 Third Street, Boonville, MO 65233-1536.** Terms: Cash or Check accepted with proper I.D. and Social Security Number and References. Announcements made day of the auction supercede all printed material. Not Responsible for Accidents or Sold Items.

**No return on any items once they leave the Auction Center (No Exceptions).\*\*\*\***

**Call for additional information: 660-882-5292 days or 660-882-5283 evenings before 9:00 p.m.**

**FAX: 660-882-5292 (evening hours start FAX transmission after beep)**

**MAIL BIDS:** Items are bid on in perfect condition with average or above iridescence OR as listed in the brochures. Bids will not be carried out when damage on an item has been found during the auction.

**PEOPLE PRESENT AT AUCTION ARE RESPONSIBLE FOR FINDING ANY PINHEADS, WEAR, SPOTTINESS, MANUFACTURER'S DEFECTS OR ANY OTHER MINOR FLAWS, ETC. \*\*\*\*\***

**NOTE:** Read each line, as we have accentuated the type of no particular piece, all are special.

**Make Reservations EARLY at one of these local motels:**

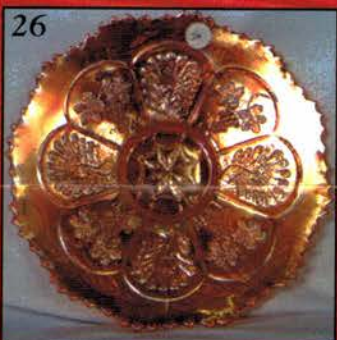
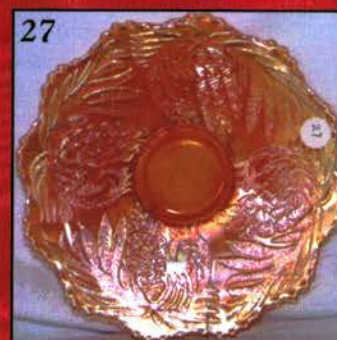
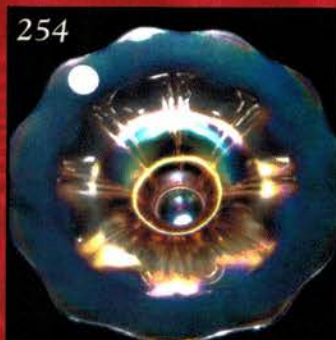
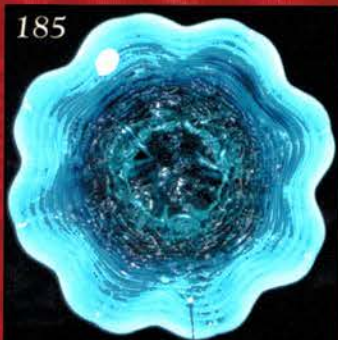
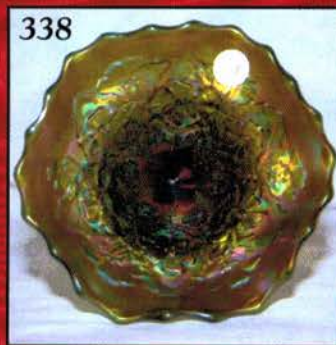
Days Inn: 660-882-8624 • Comfort Inn: 660-882-5317 • Super 8: 660-882-2900

## **Auction Consists of Rarity, Great Irid. and Variety**

### **THANK YOU FOR ATTENDING TODAY**

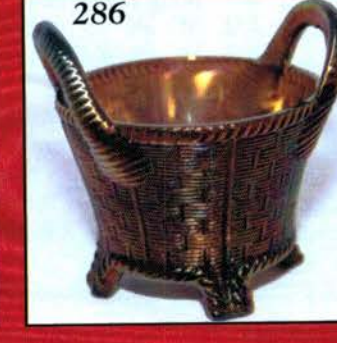
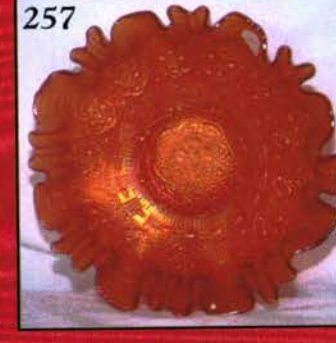
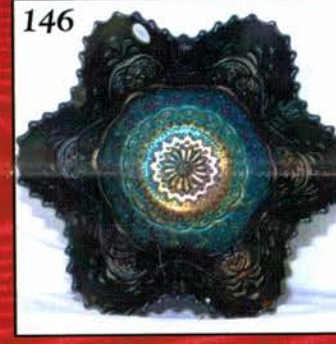
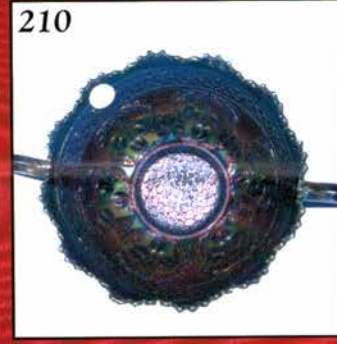
- |  |  |
|--|--|
| _____ 1. M - Dugan Dome Ftd. Double Stem Rose 8½" Rd. Bowl                           | _____ 14. M - 6", 6 Ruffle Pine Cone Bowl  |
| _____ 2. M - Fenton Vintage Fernery  | _____ 15. M - 6¼", 6 Ruffle Sailboats Bowl   |
| _____ 3. M - Imp. Heavy Grape Nappy - Minor Rim Nick                                 | _____ 16. M - Split Diamond Creamer - Radium   |
| _____ 4. <b>A - 5¼" Peacock Tail Tri-Corner Plate</b>                                | _____ 17. M - Mlbg. 5¼" Blackberry Wreath Berry Bowl                                     |
| _____ 5. G - Peacock Tail Stemmed Bonbon - Very Nice                                 | _____ 18. M - <u>N</u> Peacock at Fountain 5¼" Rd. Berry Bowl                            |
| _____ 6. M - 7¼" <u>N</u> Grape and Cable Handgrip Plate - Leaf Center - <u>NICE</u> | _____ 19. M - 9¼", 10 Ruffle Cosmos Vt. Bowl - Scarce Shape                              |
| _____ 7. M - 8" JIP Morning Glory Swirl Vase   | _____ 20. <b>Rich M - 8¼", 8 Ruffle Collar Base Dragon and Lotus Bowl</b>                |
| _____ 8. M - Tree Bark Tankard Pitcher   | _____ 21. <b>W - Frosted Block Rosebowl - 4½" Opening - Mkd. Made in U.S.A. - Scarce</b> |
| _____ 9. M - Iris and Herringbone Water Pitcher - A Beauty                           | _____ 22. W - 7¼", 8 Ruffle Frosted Block Bowl - Open Bubble In Base                     |
| _____ 10. <b>M - Interior Swirl Ruffled Top Bulbous Water Pitcher</b>                | _____ 23. M - 6¼" Wreath of Roses Ruffled Compote  |
| _____ 11. PO - 8", 6 Ruffle Stippled Flower Bowl                                     | _____ 24. M - JIP, CRE Blackberry Spray Hat  |
| _____ 12. M - Fashion Punch Bowl, Base, Six Cups                                     | _____ 25. <b>B - 9¼" Fenton Peacock at Urn Plate - Extra Nice Find</b>                   |
| _____ 13. Lav - 7", 6 Ruffle Pine Cone Bowl - Silver and Gold Irid.                  | _____ 26. <b>M - 9½" Scarce Collar Base Peacock and Grape Plate</b>                      |

27. **M - 8", 12-Sided Pine Cone Plate**
28. Lav. Base - 6 1/4", 6 Ruffle Blackberry Spray Hat - M. Overlay
29. Beautiful A - 6", 6 Ruffle Fruits and Flowers Berry Bowl
30. **Clambroth - 9 3/4" Fenton Holly Plate - Scarce and Flat**
31. Dark M - Fenton Lotus and Grape Vt. Bonbon - 4 Sides Up
32. PO - Ruffled, Banana Shape Dugan Cherries Ftd. Bowl
33. A - 8 1/2", 6 Ruffle Pony Bowl
34. A - Dugan 6 1/2", CRE, Tri Corner Honeycomb and Beads Plate/Bowl?
35. **W - 9 1/2" Dugan Fanciful Low Ruffled Bowl - Beautiful Blue Highlights**
36. W - Dugan Grape Delight Ftd. Nut Bowl - Scarce
37. W - Leaf Rays Nappy - Extra Nice
38. W - 5 1/2" Rd. Persian Garden Bowl - Beautiful
39. P - Dugan Grape Delight Nut Bowl
40. A - Dugan Grape Delight Nut Bowl - Interior Crack
41. PO - Dugan Ruffled Coin Spot Compote
42. PO - 8" Ruffled Stippled Flower Bowl - Lots of Opal
43. PO - 8 3/4", 10 Ruffle Single Flower Bowl
44. PO - 9" Dome Ftd. Dugan Raindrops Bowl - Scarce and Nice
45. PO - 6 1/2" Banana Shape, CRE Smooth Rays Bowl - Jeweled Heart Ext.
46. **M - 8 1/2" Dome Base, 10 Ruffle Weeping Cherries Bowl - Rare Find**
47. PO - 9", 6 Ruffle Collar Base Dugan Cherries Interior Bowl - Jeweled Heart Ext.
48. PO - 6", 6 Ruffle Collar Base Dugan Cherries Interior Bowl - Jeweled Heart Ext.
49. M - 8", 10 Ruffle, Ball Ftd. Dugan Cherries Bowl - Pattern Inside and Out
50. A - 7 1/2" Rd., Dome Ftd. Double Stem Rose Bowl
51. M - 6 1/4" Ruffled Wreathed Cherry Banana Shape Dish
52. M - Dugan Beaded Basket Two Handled Basket - Great Example
53. **P - Dugan Beaded Basket Two Handled Basket - Scarce Color**
54. M - 8 3/4", 10 Ruffle Windflower Bowl
55. **M - 8 1/2", 10 Ruffle Dugan Pony Bowl - Scarce Shape**
56. M - Stork and Rushes Mug
57. **P - 7" Dugan Holly and Berry Ruffled Nappy - Electric Irid.**
58. PO - 8", 6 Ruffle Dugan Holly and Berry Bowl
59. A - 9", Spat Ftd. Fenton Grape and Cable Flat Plate
60. **Great A - 8 1/2", 3 in 1 Fenton Ribbon Tie Bowl - A Dandy!**
61. P - 6 3/8", 8 Ruffle Dugan Wishbone and Spades Low Bowl - Super Electric
62. **Scarce P - 9 3/4" Dugan Collar Base Cherries 8 Ruffle Bowl - Jeweled Heart Ext.**
63. **A - 7 1/2" Ruffled Imp. Scroll Embossed Lg. Compote - Eastern Star Ext. - ELECTRIC!**
64. P - 8 3/4" N 8 Ruffle Nippon Bowl - BW Ext.
65. G - 9 3/8" Fenton Leaf Chain Plate - Pretty Example
66. **P - N Tri-Corner Drapery Bowl - SUPER ELECTRIC EXAMPLE**
67. P - 8 3/4" N 8 Ruffle Greek Key Bowl - BW Ext.
68. **Lav. Horehound? - N 8 1/2", 8 Ruffle Stippled Three Fruits Bowl - Rib Ext.**
69. Multi Electric P - N PCE Three Fruits Bowl - BW Ext.
70. **AO - Fruits and Flowers Stemmed Bonbon - Fantastic M. Overlay**
71. Aqua - N Leaf Beads Rosebowl with Light Opal Tips
72. A - 5 3/4" Mlbg. ICS Peacock Bowl - No Bee, No Beads
73. P - 6 1/2" N Squatty Leaf Columns Vase - Super Color
74. **Root Beer/Amber - 10 3/8" Imp. Ripple Vase - Most Unusual Color!**
75. **G - 9 3/4" Mlbg. Swirled Hobnail Vase - As Pretty As You Will See**
76. Dark A - 12 1/2" Mlbg. Swung Swirled Hobnail Vase - Great Size and Color
77. Radium M - 10 1/4" Jenkins Cut Flowers Cylindrical Vase
78. A - 10 3/4" Fenton Diamond and Rib Vase
79. B - 11" Fenton Diamond and Rib Vase - Tough Color to Find
80. Rich M - 9 3/4" Fenton Diamond and Rib Vase - Nicely Flared
81. G - 10" Rustic Vase
82. W - 9 3/4" Rustic Vase
83. G - 11" Long Thumbprint Hobnail Vase - Extra Nice
84. B - N 10" Thin Rib Vase - Scarce Color
85. P - N 11 1/4" Tree Trunk Vase
86. P - N 9 3/4" Diamond Point Vase
87. **M - 5 3/8" Squatty Boggy Bayou Vase - Scarce Size**
88. M - 5" Jeanette Horn of Plenty Vase
89. G - 6 1/4" Stemmed Vase, Scalloped Top, Starred Base - ? Pattern ?
90. B - Ruffled Fenton Peacock at Urn Compote
91. M - Ruffled Fenton Peacock at Urn Compote - Light Irid.
92. A - 7" Ruffled Fenton Vintage (Grape) Compote
93. G - 6 1/2" Ruffled Fenton Vintage (Grape) Compote
94. A - 6 Ruffle Peacock Tail Compote with Twisted Stem
95. A - 6 Ruffle Peacock Tail Compote - Normal Stem
96. B - 6 Ruffle Peacock Tail Compote - with Twisted Stem
97. A - Fenton Peacock Tail Stemmed Bonbon
98. G - Imp. Grape Ruffled Compote
99. Dk. Lime Green - Imp. Grape Ruffled Compote
100. A - N 6 Ruffle Daisy and Plume Compote - Plain Int.
101. P - N 6 Ruffle Daisy and Plume Compote - Plain Int.
102. G - N 6 Ruffle Daisy and Plume Compote - Alaskan Effect
103. M - Imp. Scroll Embossed Lg. Ruffled Compote - Eastern Star Ext.
104. M - Imp. Ruffled Hobstar Flower Compote
105. Tealish G - Imp. Scroll Embossed 9 3/4" Plate - Base Glows



106. G - 7½" ICS Fenton Peacock Tail Bowl
107. A - 7", 6 Ruffle Fenton Peacock Tail Bowl
108. G - 9", 6 Ruffle Fenton Heart and Vine Bowl
109. Odd Blue - 5¼", 2 Row, O.E. Ruffled Basket
110. Sapphire Base - 5¼", 2 Row, O.E. Ruffled Basket
111. M - 5¼", 2 Row, O.E. Ruffled Basket
112. **G - 6", 3 in 1, Mlbg. Blackberry Wreath Bowl - Radium Dandy!**
113. G - 6" Rd. Mlbg. Cosmos Bowl - Very Nice Radium
114. **Radium M - Mlbg. Sherbet Shape Leaf and Little Flowers Compote**
115. A - Mlbg. Holly Sprig Spade Shape Nappy
116. M - Mlbg. Holly Whirl 2 Sides Up Bonbon - Rim Nick
117. **M - 10" Mlbg. Ruffled Peacock and Urn Bowl - No Beads**
118. G - Mlbg. 6 Ruffle Nesting Swan Bowl - Beautiful Satin
119. M - Mlbg. 7½" Ruffled Shotgun Bowl
120. G - Mlbg. 10", 6 Ruffle Whirling Leaves Bowl - Radium
121. M - Mlbg. 10", 6 Ruffle Primrose Bowl - Satin Beauty
122. **Rare Imperial Blue - 12" Swung Ripple Vase**
123. Lav. - 10" Imp. Freefold Vase - Magnificent Example
124. Deep PO - 10¼" Dugan Pulled Loop Vase - Nearly Moonstone - Very Different
125. Teal - 9" Corinth Vase (Westmoreland) 3⅞" Base, 4¼" Top - Super!
126. Deep B - 9" Tall/7½" Wide Brockwitz Rose Garden Vase - Normal Mold Flaws
127. **M - 9¼" Imp. Ripple Mid-Size Vase - Rare 3⅞" Base, 6¼" Flared Top**
128. Lt. P - Imp. Grape Water Carafe - Super Multi Electric Irid.
129. **B - Imp. Fieldflower Tumbler - Rare**
130. **B - Imp. 474 Tumbler - Super Scarce Item, Few Known**
131. Scarce A - Milady Tumbler
132. Rare Imp. P - Chatelaine Tumbler - Average Irid.
133. G - Grape and Gothic Arches Tumblers - Choice A or B
134. M - N Oriental Poppy Tumblers - Choice A, B, C, D, E, F
135. **Scarce P - Imp. Fashion Tumbler - Electric Highlights**
136. Smoke - Imp. Fashion Tumbler - Also Scarce
137. Dark, Rich M - Fenton Blueberry Tumbler - Extra, Extra Nice
138. **B - Enameled Cherries Water Pitcher with Six Tumblers**
139. B - 8¼" ICS Orange Tree Bowl with Trunk Center
140. **M - 9" Rd. Ball Ftd. Water Lily Bowl - Outstanding Example**
141. Rich M - 8¼" Fenton Peacock and Grape Collar Base, Sq. 8 Ruffle Bowl
142. **A - 9", 3 in 1 Fenton Ragged Robin Bowl - Scarce Shape, Color, Pattern**
143. **B - Fenton Lg. 8½" Cherry Circles Bonbon - 4 Sides Up - Multi Electric**
144. PO - 8" CRE Tri Corner Ski Star and Compass Dome Base Bowl
145. **Aqua Base - 10" Imp. Grape Lg., Flared, Rd. Bowl - Unusual High Relief Grapes In Center**
146. P - Persian Garden 11", 6 Ruffle Fruit Bowl Top - Extra Nice
147. **Sapphire Base - 7", 8 Ruffle Dugan Single Flower Bowl - Possibly One Of A Kind**
148. **Renninger B - N Hearts and Flowers Ruffled Compote - Rib Ext.**
149. Great M - Lg., CRE, Ruffled Persian Medallion Compote
150. G - CRE, Ruffled Fenton Scotch Thistle Compote
151. **Scarce A - Fenton Holly Small, Ruffled Compote**
152. B - Fenton Holly Small, Ruffled Compote
153. M - Fenton Holly Small, Ruffled Compote
154. **M - 6 Ruffle Whimsey Orange Tree Compote from Wine**
155. M - N Daisy and Plume Stemmed Rosebowl - Plain Int.
156. G - 5" Coin Dot Rosebowl - Smooth Dots - Possibly Westmoreland?
157. B - 5½" Spat Ftd. Fenton Two Flowers Rosebowl
158. P - N Fine Cut and Roses Rosebowl - Outstanding Color, Chipped Feet
159. P - N Raspberry Int. Ftd. Rosebowl - Daisy and Plume Ext. - Great Color!
160. P - N Beaded Cable Rosebowl - Rayed Int. - Pretty Silver Irid.
161. Nice M - Fenton Garland Rosebowl - Above Ave.
162. B - Fenton Garland Rosebowl
163. Lime G - Westmoreland Louisa Rosebowl - Radium Silver Finish
164. **Lime G - Westmoreland Louisa Ftd. Nut Bowl - M. Overlay**
165. W - 5" Opening Imp. Frosted Block Rosebowl
166. M - 4½" Opening Imp. Frosted Block Rosebowl
167. M - 4½" Opening Imp. Star and File Rosebowl
168. Lime G - 5¼" Opening Imp. Open Rose Rosebowl - Unusual Color
169. Teal - 5¼" Opening Imp. Open Rose Rosebowl - Base Glows
170. Clambroth - 3¼" Ruffled Opening Interior Flute Rosebowl - Neat!
171. **Green - N 14" Mid Size Thin Rib Funeral Vase - 4¼" Base - GREAT**
172. **Deep B - N 13" Mid Size Thin Rib Funeral Vase - 4¼" Base - Multi Electric**
173. G - N 6⅞" Squatty Tree Trunk Vase - 5" Top, 3⅞" Base - A Dandy
174. P - Imp. 5½" Colonial Lady Vase - A Keeper!
175. Vas - Florentine 8⅞" Candlesticks - Nice Quality Pair
176. Sapphire B - Florentine 8¾" Single Candlestick
177. AO - N Daisy and Drape Vase - Flared Top - Soft Butterscotch Overlay
178. **RARE Dark B - N Memphis Punch Bowl Base - Electric - Where's The Top?**
179. M - Flashed - 6¼" Tall Stemmed Perfume Bottles - Choice A or B
180. Rich M - N 7 pc. Raspberry Water Set
181. Crystal - 8½" Zipper Loop Oil Lamp
182. Pastel M - Regal Iris GWTW Lamp Base and Font - Approx. 4" Interior Crack

183. M - Westmoreland Fruit Salad Punch Bowl - Top Only
184. M - 10¼" ICS Ball Ftd. Stag and Holly Bowl - Extra Nice
185. BO - N Ruffled Rose Show Bowl - Non-Irid.
186. Crystal Blue - 5¼" Ruffled Panther Berry Bowl - Non-Irid.
187. Scarce B - Fenton Ruffled Iris Compote
188. Yellow Vas. - Orange Tree Mug - 2½" Base, 3½" Top
189. **A - 10", 6 Ruffle Ten Mums Collar Base Bowl - Scarce and Nice**
190. P - 8", 8 Ruffle Imp. Windmill Bowl - Outstanding Electric Irid.
191. **P - 7¾", 8 Ruffle Imp. Shell and Sand Bowl - Excellent Color**
192. Super M - 7¾", 8 Ruffle Imp. Shell and Sand Bowl - Pumpkin!
193. Helios G - 9¼" Imp. Scroll Embossed Plate - Radium
194. **Fantastic A - 9¼" Imp. Scroll Embossed Plate**
195. Smoke - 5¼", 8 Ruffle Imp. Scroll Embossed Bowl - File Ext.
196. **RARE! Pastel G - Scroll Embossed Stemmed Goblet - May Be One Of A Kind!**
197. Rev Amberina Red - 8¾", 8 Ruffle Imp. Scroll Embossed Bowl - File Ext. - Only One Known?
198. **Red - 7" ICS Fenton Grape and Cable Bowl**
199. **Cherry Red - 8¼" ICS Fenton Orange Tree Bowl - Superb Coloration!**
200. **Red - 8¼" ICS Fenton Plaid Bowl - Scarce Pattern and Shape**
201. **Outstanding Red - 9" Sq. 8 Ruffle Fenton Orange Tree Bowl - This Is The One!**
202. A - 8" N Ftd. 8 Ruffle Rosette Bowl - Underrated Pattern
203. G - Leaf Beads Nut Bowl - Alaskan Effect
204. G - N Paneled Holly Card Tray Bonbon - Choice A or B
205. M - N Lustre Flute Whimsey Nappy from Punch Cup
206. P - N 8 Sided Bushel Basket
207. P - N Ftd. Wild Rose Bowl
208. G - N Ftd. Wild Rose Bowl - M. Overlay
209. **G - N Ftd. Wild Rose Vt. Nut Bowl - Smooth Ray Int.**
210. **Dark B - 7" Rd. Deep Cherry Circles 2-Handled Bowl - Multi Electric**
211. G - Fenton Butterfly Bonbon - 4 Sides Up
212. B - Fenton Butterfly Bonbon - 4 Sides Up
213. M - Persian Medallion Bonbon - 4 Sides Up
214. M - Persian Medallion Bonbon - Card Tray Shape
215. B - Fenton Vintage (Grape) Card Tray Bonbon - Splotchy Irid.
216. A - N Fruits and Flowers Stemmed Bonbon
217. G - N Fruits and Flowers Stemmed Bonbon
218. Elec. B - N Grape and Cable Bonbon - 4 Sides Up
219. Extra Nice A - N Grape and Cable Bonbon - 4 Sides Up
220. P - N Butterfly and Ray Bonbon - 4 Sides Up
221. M - Fenton Water Lily Card Tray Bonbon - Radium and Nice
222. M - Fenton Water Lily 4 Sides Up Bonbon - Radium and Nice
223. B - Illusion Bonbon - 4 Sides Up - Overlooked and Undervalued Pattern
224. G - Fenton Smooth Rays Card Tray Bonbon - Beautiful Piece
225. P - N 8 Ruffle Ftd. Wishbone Bowl - Above Average
226. P - N Singing Birds Mug
227. P - N 8¾", 8 Ruffle Greek Key Bowl - BW Ext.
228. B - N PCE Stippled Three Fruits Bowl - Stunning, But One Tip Missing
229. A - N 8½" Ruffled Grape Leaves Bowl
230. Rich M - 11" Ball Ftd. Sq. 8 Ruffle Chrysanthemum/Windmill Bowl
231. M - 9½" Fenton Smooth Rays CRE Sq. Shape Whimsied Bowl
232. Clambroth - 7¼" ICS Leaf Chain Bowl - Rich Coloring
233. Extra Nice M - 9" Sq. 8 Ruffle Fenton Orange Tree Bowl
234. M - 8", 8 Ruffle Spat Ftd. Stag and Holly Bowl - Very Pretty
235. M - 5½" Sm. Water Lily Sauce Bowl
236. A - 9", 6 Ruffle Heart and Vine Bowl
237. G - 9", 6 Ruffle Heart and Vine Bowl
238. G - 8½", 3 in 1 Fenton Vintage (Grape) Bowl - Scarce Shape
239. **Moonstone - 5½", 6 Ruffle Fenton Holly Hat - Quality Piece**
240. B - 9¼", 6 Ruffle Fenton Holly Bowl - Nice
241. M - 9¼", 6 Ruffle Fenton Holly Bowl - Extra Nice
242. B - 9", 3 in 1, 6 Ruffle Fenton Holly Bowl - Neat Shape
243. G - 9" Sq. 8 Ruffle Collar Base Dragon and Lotus Bowl - Silver Irid.
244. B - 8¼", 3 in 1 Fenton Captive Rose Bowl
245. M - 9" Sq. 8 Ruffle Collar Base Peacock and Grape Bowl - Rim Chip
246. **B - 8¼" Sq. 8 Ruffle Fenton Peacock At Urn Bowl**
247. M - 9", 6 Ruffle Fenton Vintage (Grape) Bowl
248. B - 5½" Ruffled Ftd. Panther Berry Bowl
249. **M - 8" Rd. Imp. Acanthus Bowl - Outstanding Example**
250. M - 9", 8 Ruffle Imp. Pansy Bowl
251. **M - 5", 6 Ruffle Imp. Propeller Compote - One Of The Best**
252. M - 5¼", 6 Ruffle Rococo Bowl
253. M - 9", 8 Ruffle Imp. Scroll Embossed Bowl - File Ext.
254. Clear Dome Base - 8½" Imp. Columbia Plate - Clambroth Overlay
255. P - 7¼", 6 Ruffle N Blackberry Compote - BW Ext. - Very Beautiful
256. P - 7", 6 Ruffle N Blackberry Vt. Compote - BW Ext. - Super Small 2⅞" Base
257. Pumpkin M - 8", 3 in 1 Persian Medallion Bowl - Top Notch Example
258. P - 8½", 8 Ruffle N Grape and Cable Vt. Bowl - Smooth Ext.
259. P - Broken Arches Punch Cup - Interior Rim Chip



260. **Fantastic Sapphire - N Ruffled, Stippled Grape and Cable Bowl - Sorry, Two Tips Chipped Off**
261. **Radium A - Mlbg. Spade Shape Holly Sprig Nappy - Super Ex.**
262. **Soft, Satin M - Mlbg. Leaf and Little Flowers Sherbet Shape Compote**
263. P - 6¼" CRE Dugan Shell and Fan Plate - Jeweled Heart Ext.
264. Super B - 6½" ICS Fenton Coin Dot Bowl - ELECTRIC
265. **B - 9", 3 in 1 Fenton Low Ruffled Ribbon Tie Plate (?) - Extra Pretty**
266. P - 11¼", 8 Ruffle Dugan Victorian Bowl
267. **W - Dugan Heavy Shell Console Bowl - Super Find**
268. **W - Dugan Heavy Shell Console Bowl - Twice The Find**
269. Scarce N Blue - 8 Ruffle Ftd. Wishbone Bowl
270. **G - N PCE Peacocks Bowl - BW Ext. - Super Example - Roughness on Marie**
271. M - N 10½", 8 Ruffle Peacock At Urn Bowl - Neat Shape
272. Scarce G - N PCE Stippled Three Fruits Bowl
273. AO - Fine Cut and Roses Ftd. Ruffled Candy Dish - M. Overlay
274. **G - Imp. 8½" Rd. Flared Bowl - Scarce - Base Glows**
275. B - 5¼" Tall Brockwitz Rose Garden Vase - Base Chips - Still Rare Size
276. **M - Giant Ftd. Stag and Holly Rosebowl - Blue and Pink Irid. - Odd Color Feet**
277. **M - 6¼" Tall Jain Elephant Vase - Sgnd. Jain on Body**
278. P - N Grape and Cable Water Pitcher - Rim Chipped
279. P - N Grape and Cable Tumbler - Choice A or B
280. P - N Grape and Cable Butter Dish with Lid - Nice One
281. **M - N Grape and Cable Butter Dish with Lid - Very Beautiful**
282. M - N Grape and Cable Creamer - Also Nice
283. M - N Grape and Cable Spooner - Sweet!
284. M - N Grape and Cable Sugar Bowl with Lid - Gorgeous, But Has Base Chip
285. G - 9¼" N 8 Ruffle Wishbone Bowl - BW Ext.
286. **Smoky Lav. - N Round Bushel Basket - Nicely Iridized**
287. M - N Round Bushel Basket - Fine Example
288. B - Enameled Ground Cherries Tumbler
289. P - N Acorn Burrs Punch Cups - 6 x \$
290. A - Fenton Butterfly Bonbon - Card Tray Shape
291. B - 7", 6 Ruffle Leaf Chain Bowl
292. **M - 8½" Rd. Ftd. Imp. Double Dutch Bowl**
293. M - 8", 8 Ruffle Imp. Windmill Bowl - Better Example
294. M - Butterfly and Berry Tumbler
295. M - Dugan Floral and Grape Tumbler
296. M - Imp. Pansy Nappy
297. **M - N Poppy Pickle Dish - Scarce and Nice**
298. M - 10" Sq. 8 Ruffle Bowl Ftd. Water Lily Bowl - Super Irid.
299. G - N Leaf Beads Rosebowl - Rib Int.
300. **B - N 9", 8 Ruffle Poppy Show Bowl - Beautiful Irid.**
301. G - 6" Rd. Near-Cut Strawberry Bowl
302. Teal - Westmoreland 6½" Shell Bowl
303. A - Westmoreland 4½" Shell Bowl
304. M - 9" Rd. Headdress Bowl - Curved Star Ext.
305. **M - 10", 6 Ruffle Mlbg. Primrose Bowl - Lovely Satin Finish**
306. M - 6½" Flat Imp. Grape Plate
307. M - 9" ICS Ball Ftd. Two Flowers Bowl
308. P - Westmoreland 270 Ruffled Compote
309. M - Dugan Vintage (Grape) Powder Dish with Lid
310. M - 9", 8 Ruffle Imp. Scroll Embossed Bowl - File Ext.
311. M - 10", 6 Ruffle Mlbg. Primrose Bowl - Light Satin
312. M - Imp. Grape Wine Decanter and Six Wines
313. M - Imp. Grape Wine Decanter
314. M - Imp. Pansy Nappy
315. Clambroth - Imp. Frosted Block Stemmed Compote
316. **M - Melon Ribbed Salt and Pepper Shakers w/Original Lids**
317. B - 7½" Rd. Ball Ftd. Fenton Grape and Cable Bowl
318. **M - 6" Tall Dugan Tree Of Life Handled Basket - SCARCE**
319. M - Dugan Big Basketweave 6" Tall Handled Basket
320. B - Fenton Vintage (Grape) Fernery
321. **M - Australian 9½" Gum Tips Vase - Eight Tips**
322. BA - Australian 8½" Spiral Gum Tips Vase - Ten Tips
323. M - Rococo Vase - Cracked and Reglued
324. G - 9" N Strawberry Plate - BW Ext. - Bronze Finish - Pink Highlights
325. **PURPLE - 9" N Stippled Peacocks Plate - Rib Ext. - One Of Two Known**
326. PO - Dugan 5" Ruffled Thin Panel Vase
327. P - N 11" Thin Rib Vase
328. G - 12" April Showers Vase
329. A - 10½" April Showers Vase
330. **FANTASTIC B - Butterfly and Berry 10½" Vase - Base Chip**
331. Russet - 10½" Four Pillars Vase - Rib Int. - Above Average
332. M - 9", 8 Ruffle Imp. Lustre Rose Bowl
333. M - 7¼" Sq. 8 Ruffle Fenton Acorn Bowl
334. M - 6" Ruffled Ftd. Water Lily Bowl
335. M - 10¼" Lg. Rd. Flared Imp. Lustre Rose Bowl - Nice Example
336. M - 10¼" Lg. Rd. Flared Imp. Grape Bowl - Pretty!
337. M - 10" Imp. Vintage Center - Handled Server
338. **G - N Blossomtime Compote - SUPER Example**
339. **Emerald Green - N 8¼", 8 Ruffle Greek Key Bowl - Scarce BW Ext. - Fabulous**
340. **Electric B - 9" N Greek Key Plate - Stunning Rarity - One Of Three Known**
341. **P - 8¼" N 8 Ruffle Nippon Bowl - BW Ext. - Electric Blues Galore!**
342. **A - 9", 8 Ruffle Imp. Cobblestone Bowl - Super Multi Electric**
343. **Emerald Green - Imp. 474 Punch Cup - Must See To Believe**



- \_\_\_\_\_ 344. G - 5½", 6 Ruffle Feathered Serpent Bowl - Dandy Little Guy
- \_\_\_\_\_ 345. Clambroth - 9", 6 Ruffle Orange Tree Bowl
- \_\_\_\_\_ 346. G - Imp. Scroll Embossed Ruffled Compote - Base Glows
- \_\_\_\_\_ 347. M - Ruffled Blackberry Spray Compote
- \_\_\_\_\_ 348. A - Ruffled Wreath Of Roses Compote
- \_\_\_\_\_ 349. Clambroth - 8½" Oval Imp. Frosted Block Pickle Dish
- \_\_\_\_\_ 350. M - 8½" ICS Fenton Holly Bowl
- \_\_\_\_\_ 351. M - 7" ICS Fenton Grape and Cable Bowl
- \_\_\_\_\_ 352. M - 8¾" Fenton Fine Rib Vase - Base Chipped
- \_\_\_\_\_ 353. M - 8½" CRE Fenton Knotted Beads Vase
- \_\_\_\_\_ 354. A - 9" Westmoreland Concave Flute Vase
- \_\_\_\_\_ 355. Russet - 10" N Four Pillars Vase
- \_\_\_\_\_ 356. Russet - 11½" N Four Pillars Vase - One Toe Chipped
- \_\_\_\_\_ 357. M - 10" JIP Morning Glory Swirl Vase
- \_\_\_\_\_ 358. M - 9½" JIP Morning Glory Vase
- \_\_\_\_\_ 359. Pumpkin M - 8½" Imp. Beaded Bullseye Vase - Radium Beauty
- \_\_\_\_\_ 360. M - 11½" Imp. Beaded Bullseye Vase
- \_\_\_\_\_ 361. M - 14" Imp. Ripple Vase - 3⅞" Base, 5½" Top
- \_\_\_\_\_ 362. Helios - 14" Imp. Ripple Vase - 3⅞" Base, 4¼" Top
- \_\_\_\_\_ 363. Helios - 10¼" Imp. Ripple Vase - 2¼" Base, 4½" Top
- \_\_\_\_\_ 364. M - 10½" Imp. Ripple Vase
- \_\_\_\_\_ 365. M - 9¼" Imp. Ripple Vase
- \_\_\_\_\_ 366. M - 17¼" Swung Spearhead and Rib Vase - 14" Front Height - Nice Shape
- \_\_\_\_\_ 367. Contemporary - G - Imp. Loganberry Vase - Sgnd. IG
- \_\_\_\_\_ 368. Contemporary - P - Fenton Paneled Daisy Covered Candy Jar
- \_\_\_\_\_ 369. Contemporary - G - Imp. Pansy Nappy - Sgnd. IG
- \_\_\_\_\_ 370. Contemporary - AO - Fenton Drapery Ftd. Rosebowl
- \_\_\_\_\_ 371. Contemporary - Smoke - 8¼", 3 in 1 Ftd. Imp. Open Rose Bowl - Sgnd. IG
- \_\_\_\_\_ 372. Contemporary - M - Holly Band Toothpick Holder
- \_\_\_\_\_ 373. Contemporary - G - Imp. Hobstar Covered Jar - Sgnd. IG
- \_\_\_\_\_ 374. Contemporary - W - Floral Hat Shape Bowl - Sgnd. IG
- \_\_\_\_\_ 375. Contemporary - Ice G - 1980 HOACGA Good Luck Hatpin Holder
- \_\_\_\_\_ 376. Contemporary - Cobalt B - 1982 HOACGA Good Luck Mug
- \_\_\_\_\_ 377. Contemporary - G - Imp. Pansy Pickle Dish - Sgnd. IG
- \_\_\_\_\_ 378. Contemporary - W - 9¼" Ruffled Oval Pansy Dresser Dish - Sgnd. IG
- \_\_\_\_\_ 379. Contemporary - Ice B - 9¼" Ruffled Oval Pansy Dresser Dish - Sgnd. IG
- \_\_\_\_\_ 380. Contemporary - Smoke - 8", 3 in 1 Windmill Bowl - Sgnd. IG
- \_\_\_\_\_ 381. Contemporary - Smoke - 6" Imp. Grape Milk Pitcher - Sgnd. IG
- \_\_\_\_\_ 382. Contemporary - Smoke - Imp. Eastern Star Covered Candy Dish - Sgnd. IG
- \_\_\_\_\_ 383. Contemporary - Smoke - 8", 3 in 1 Ftd. Lustre Rose Bowl - Sgnd. IG

- \_\_\_\_\_ 384. Contemporary - B - Cactus Tumbler
- \_\_\_\_\_ 385. Contemporary - Smoke - 11¼" Ftd. Ruffled Imp. Lustre Rose Centerpiece Bowl - Sgnd. IG
- \_\_\_\_\_ 386. Contemporary - Smoke - Loganberry Vase - Sgnd. IG - Super Dark
- \_\_\_\_\_ 387. Contemporary - Smoke - Imp. Grape Wine Bottle - Sgnd. IG
- \_\_\_\_\_ 388. Contemporary - Smoke - Imp. Grape 7 pc. Water Set - Sgnd. IG
- \_\_\_\_\_ 389. Contemporary - Smoke - Imp. Whirling Star Lg. Punch Bowl Base - 13 Cups - Sgnd. IG - **RARE!**
- \_\_\_\_\_ 390. M - Imp. Grape Decanter - No Stopper
- \_\_\_\_\_ 391. M - N Grape and Cable Punch Cup
- \_\_\_\_\_ 392. Red Amberina - 7" Rd. Ftd. Imp. Open Rose Bowl - Plain Int. - Non-Irid. - Scarce

**\*Approximately 50 Uncatalogued Pieces To Sell At Conclusion Of Auction**

**THANK YOU FOR ATTENDING TODAY**

## **SPECIAL NOTE:**

**NO SUNDAY CALLS, PLEASE!**  
**Winning Absentee Bidders will be contacted Monday through Wednesday of the week following the Auction!**

**Thank You!**

## **2002 CALENDAR**

**March 16, 2002**

**BAUR COLLECTION FROM TEXAS**  
 Held at Boonville Center

**April 13, 2002**

**SMITHEE COLLECTION**  
 Held at Boonville Center

**May 18, 2002**

**THE ARMS COLORADO COLLECTION**  
 Held at Boonville Center

**June 22, 2002**

**SURPRISE COLLECTION**  
 Held at Boonville Center

**Call today for 2002 bookings.**  
**(1 piece or entire collection!!)**

**WE DO AUCTIONS RIGHT!!**

