

BURNS

AUCTION SERVICE

2002 Florida Carnival Glass Convention Auction Extravaganza

Auction #1 - Sunshine State Carnival Glass Association Convention Auction

Saturday, February 2, 2002

9:00 a.m. (preview Fri. 7 p.m., Sat. 8:00 a.m.)

at the

Howard Johnson Ocean Resort

2096 N.E. 2nd St., Deerfield Beach, FL 33441

(954) 428-2850

Auction #2 - Tampa Bay Carnival Glass Club Jamboree Auction

4:00 p.m., Friday, February 8, 2002

(preview: 2:00 p.m. Fri.)

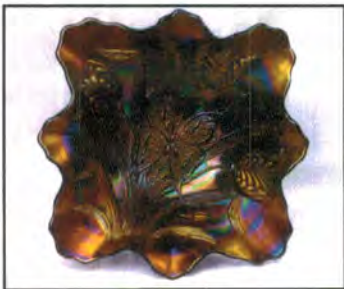
at the

Best Western Conference Center

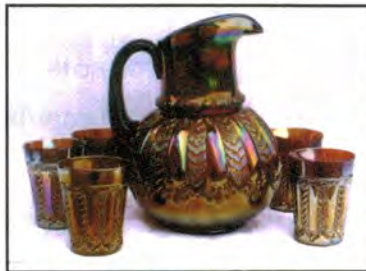
21338 U.S. Hwy. 19 N, Clearwater, FL 33765

(727) 799-1565

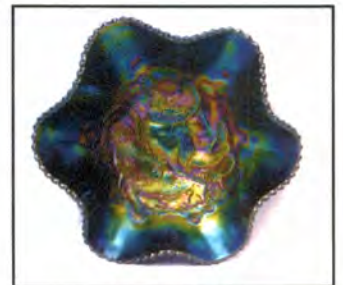
William E. Richards III, Auctioneer • FL License No. AU0001621



Lot S-105



Lot S-20



Lot T-215



Lot S-115



Lot S-100



Lot S-117



Lot T-235



Lot S-118



Lot T-310

This year will start with things a little different. There comes a time each year when I have to make choices. Burns Auction Service has the privilege of offering to you the collection of Art Beedham from New York State, and therein lies my choices.

My choice was how to handle this collection, take care of my early year auction dates and, most importantly, keep everyone HAPPY! Then it hit me - instead of a 2 session auction (Friday night and Saturday) how about a 2 session auction: Saturday and the next Friday evening. So anyway, we are selling Mr. Beedham's glass in 2 sessions - one for both our Florida auctions. Art has a great collection and in knowing him for about 30 years I'll guarantee you there will be at least one item you'll just love to purchase. He was pretty picky and damage is at a minimum. Make your plans now!

The Sunshine State Convention Auction will be held in Deerfield Beach at the Howard Johnsons Resort. The first 208 lots will be sold there and the following weekend the final 202 lots will be sold at the Tampa Bay Convention Auction to be held at the Best Western Conference Center in Clearwater, Florida

Before each session will be the details of the individual convention information. See ya there!

ATTENTION ALL DEALERS: Be sure to bring a copy of your Tax Exemption Certificate or you will be charged Florida State Sales Tax!

Burns Auction Service

Tom Burns
P.O. Box 608
Bath, New York 14810
(607) 776-7942 Cell: 731-9302

Bill Richards
44 Water Street, Poland OH 44514
(330) 757-2001
FAX (330) 757-4917

Bill Richards III
2253 Country Lane
Poland, OH 44514
(330) 755-2620

Mail Bids honored under the following conditions:

1. No deposit required. Bidders will take full responsibility to honor any and all bids we execute for them. Payment in full plus postage and handling required after notification and before we ship any item to them.
2. Items are bid on in perfect condition with average or above average iridescence OR as listed in the brochures. Bids will not be carried out when damage on an item has been found during the auction. **PEOPLE PRESENT AT THE AUCTION ARE RESPONSIBLE FOR FINDING ANY PIN-HEADS, WEAR, SPOTTINESS, MANUFACTURER'S DEFECTS OR ANY OTHER MINOR FLAWS, ETC.**
3. Successful bidders will be notified by collect call from the auctioneer **SO BE SURE TO INCLUDE PHONE NUMBER.**
4. Phone inquiries about the glass or any other questions are welcome.
5. If you have some other person at the auction bidding for you, they must pay for the item before taking it.
6. Any terms or conditions given the day of the auction will supersede any previously published information.
7. Mail, e-mail, fax and phone bids are due by Wednesday, January 30, 2002 **FOR BOTH AUCTIONS!**

Visit our website at: <http://www.woodslan.com/burnsauction/>

AUCTION #1

2002 Sunshine State Carnival Glass Assoc. Convention Auction

Saturday, Feb. 2, 2002, 9:00 a.m. (previews: 7 p.m. Fri.; 8 a.m. Sat.)

at the

Howard Johnson Ocean Resort

2096 N.E. 2nd St. Deerfield Beach, FL 33441

(exit 37 off I-95; Hillsborough Blvd. East)

(954) 428-2850

For Convention information contact John or Loretta Nielsen at (561) 287-1443

- | | |
|---|--|
| ___ 1. I.G. Diamond Point Miniature Handled Flower Basket - Ice Blue (unusual item) | ___ 9. N ACORN BURR 8 PC. PUNCH SET - PUR. (RARE AND DESIRABLE; NICE COLOR AND IRID.; WELL-MATCHED) |
| ___ 2. I.G. Robin Handled Mug - Red (scarce) | ___ 10. N ACORN BURR 8 PC. PUNCH SET - MARI. (RARE AND DESIRABLE SET; WELL-MATCHED AND NICE) |
| ___ 3. Dugan Basketweave Miniature Handled Flower Basket - Mari. | ___ 11. N ACORN BURR 7 PC. WATER SET - DK. MARI. (REAL-
LY SCARCE AND DESIRABLE; VERY DARK - A SUPER SET) |
| ___ 4. Reprint "Northwood Co. Glass Manufacturers" Sign (really unusual item; newer but neat) | ___ 12. N Round Handled Bushel Basket - Aqua Opal. (rare; has opal. on edge with butterscotch overlay) |
| ___ 5. N ACORN BURR 7 PC. PUNCH SET - ICE BLUE (EXTREMELY RARE AND VERY DESIRABLE; BOWL AND BASE ARE DARK AND SUPER) | ___ 13. N Round Handled Bushel Basket - Ice Green (very scarce and desirable; really nice color and irid.) |
| ___ 6. N ACORN BURR 8 PC. PUNCH SET - ICE GREEN (EXTREMELY RARE AND DESIRABLE; DARK, SORTA LIME GREEN; 5 CUPS ARE LIME GREEN) | ___ 14. N Round Handled Bushel Basket - Green (rare color; nice item with nice irid.) |
| ___ 7. N ACORN BURR 8 PC. PUNCH SET - WHITE (VERY RARE AND DESIRABLE; FROSTY - PERFECT AND WELL-MATCHED) | ___ 15. N Round Handled Bushel Basket - Odd Amy. (scarce; nice lighter base color - sorta different) |
| ___ 8. N ACORN BURR 8 PC. PUNCH SET - GREEN (RARE AND VERY DESIRABLE; GREAT COLOR AND IRID.; A WELL-MATCHED SET) | ___ 16. N Round Handled Bushel Basket - Blue (nice color and irid.; scarce) |
| | ___ 17. N Round Handled Bushel Basket - Dk. Mari. (really nice dark color and irid.) |

18. N Eight Sided Handled Bushel Basket - Mari. (scarce; nice color)
19. 10 3/4" Tall x 4 1/4" Base N Wide Panel Mid-size Swung Vase - Green / Mari. (nice size)
20. **M'BURG GAY NINETIES 6 PC, BULBOUS WATER SET - AMY. (ABSOLUTELY FANTASTIC PITCHER - TUMBLERS VARY, BUT GO FIND THEM)**
21. M'burg Feather and Heart Tumbler - Amy. (scarce color; satiny finish)
22. **M'BURG LETTERED COURTHOUSE 6 RUFFLED BOWL - AMY. (RARE AND RADIUM; HAS LIGHT BASE COLOR AND NICE IRID.)**
23. **M'BURG TROUT AND FLY 6 RUFFLED BOWL - GREEN (RARE AND DESIRABLE; REALLY NICE SATINY FINISH)**
24. 9 1/2" M'burg Primrose 6 Ruffled Bowl - Green (nice color and radium finish; really nice)
25. **M'BURG POPPY STEMMED ICE CREAM SHAPED "SALVER" COMPOTE - AMY. (SUPER RADIUM AND SUPER RARE; GREAT COLOR AND IRID.)**
26. **M'BURG PEACOCK AT THE URN LARGE STEMMED 6 RUFFLED COMPOTE - GREEN (RARE AND VERY DESIRABLE; PERFECT WITH A NICE SATIN FINISH)**
27. 6" M'burg Peacock Flared Individual Berry Bowl - Amy. (radium; has no bee and no beading; really nice)
28. **M'BURG SWIRL HOBNAIL SPITTOON - DK. MARI. (DARK, SATINY FINISH - PERFECT WITH GREAT COLOR)**
29. 8 - 8 1/2" M'burg Holly Sprig 6 Ruffled Crimped Edge Bowl - Amy. (radium and nice; super blue and red irid.)
30. **M'BURG HANGING CHERRIES HANDLED WATER PITCHER - GREEN (ONE OF THE BETTER RADIUM EXAMPLES; GREAT COLOR - VERY ATTRACTIVE)**
31. M'burg Hanging Cherries Tumbler - Green (nice radium finish; perfect and nice)
32. **M'BURG HANGING CHERRIES HANDLED WATER PITCHER - AMY. (RARE WITH A SATINY FINISH; PERFECT AND NICE)**
33. Cambridge Double Star Handled Water Pitcher - Green (scarce and perfect with a nice radium type finish)
34. Cambridge Double Star Tumbler - Green (nice color and irid.)
35. **N DANDELION 7 PC. TANKARD WATER SET - ICE BLUE (EXTREMELY RARE AND FROSTY; A SUPER SET)**
36. **N DANDELION 7 PC. TANKARD WATER SET - GREEN (VERY RARE WITH GREAT COLOR AND IRID.; SUPER)**
37. **N DANDELION 6 PC. TANKARD WATER SET - PUR. (RARE SET; PITCHER IS SUPER, TUMBLERS AVERAGE)**
38. (2) N Dandelion Tumblers - Pur. (average; selling so much each)
39. N G & C Tankard Tumbler - Amy. (nice color and irid.)
40. **N PEACOCKS 8 RUFFLED BOWL WITH RIBBED EXT. - AQUA OPAL. (SUPER PASTEL EXAMPLE; SUPER COLOR AND IRID.)**
41. N Peacocks 8 Ruffled Bowl with Ribbed Ext. - Pur. (very scarce; nice finish with satiny irid.)
42. N Peacocks 8 Ruffled Bowl with Ribbed Ext. - Blue (very scarce; nice finish with satiny irid.)
43. N Peacocks 8 Ruffled Bowl with Ribbed Ext. - Mari. (scarce; nice color and irid.; attractive)
44. N Peacocks 8 Ruffled Bowl with Ribbed Ext. - Blue Opal. (not carnival; nice color and opal.; scarce)
45. **N PEACOCKS PLATE WITH RIBBED EXT. - LIME ICE GREEN (QUITE A SCARCE BASE COLOR; SUPER IRID.)**
46. **N PEACOCKS FLAT PLATE WITH RIBBED EXT. - WHITE (VERY SCARCE; REALLY NICE IRID.; ATTRACTIVE)**
47. N Peacocks Bowl with Pie Crust Edge and Ribbed Ext. - Dk. Mari. (really nice example with great color and irid.)
48. N G & C Breakfast Sugar and Creamer - Pur. (nice pair; well-matched and nice)
49. N G & C 8 Ruffled Bowl with Plain Ext. - Pur. (has super, super bright multi-colored irid.; nice)
50. **N G & C COVERED SWEETMEAT COMPOTE - BLUE (EXTREMELY DESIRABLE AND FANTASTIC; A GREAT RARITY)**
51. N G & C Covered Sweetmeat Compote - Pur. (scarce; nice color and really nice irid.)
52. **N G & C LARGE COVERED COMPOTE - MARI. (EXTREMELY RARE AND VERY DESIRABLE; NICE)**
53. N G & C Handled Whiskey Decanter and Stopper - Pur. (rare and desirable; minor damage at stopper insert)
54. (2) N G & C Shot Glasses - Pur. (both 'as is'; selling as a pair)
55. **N G & C HANDLED CRACKER JAR - ICE GREEN (VERY RARE AND VERY DESIRABLE; GREAT COLOR, IRID., AND CONDITION)**
56. N G & C Handled Cracker Jar - Pur. (scarce; great color and irid.)
57. N G & C Handled Cracker Jar - Dk. Mari. (scarce with super color and irid.)
58. N G & C Stippled Handled Bon Bon with Basketweave Ext. - Pastel Mari. (light base color with great irid.)
59. N G & C Handled Bon Bon with Basketweave Ext. - Mari. (satiny finish)
60. N G & C Handled Bon Bon with Basketweave Ext. - Blue (very scarce with a bright multi-colored irid.)
61. N G & C Handled Bon Bon with Basketweave Ext. - Green (scarce; really nice color and irid.)
62. N G & C Handled Bon Bon with Basketweave Ext. - Pur. (scarce; really nice color and irid.)
63. N G & C 7 pc. Water Set - Pur. (scarce; nice color and well-matched)
64. N G & C 7 pc. Water Set - Mari. (scarce; nice color and well-matched)
65. **IMPERIAL DIAMOND LACE 5 PC. WATER SET - PUR. (SUPER COLOR WITH BRIGHT IRID.; A NICE SET)**
66. 12" Tall Imperial Ripple Standard Swung Vase - Pur. (super irid.)
67. 10 3/4" Tall Imperial Ripple Standard Swung Vase - Amber (scarce color; nice)
68. Imperial Robin Handled Mug - Mari.
69. Imperial Grape Handled Water Pitcher - Mari.
70. **IMPERIAL GRAPE HANDLED WATER PITCHER - SMOKE (RARE AND DESIRABLE; GREAT COLOR WITH GREAT IRID.)**
71. **(2) IMPERIAL GRAPE TUMBLERS - SMOKE (VERY SCARCE AND NICE; SELLING CHOICE)**
72. **IMPERIAL POINSETTIA HANDLED MILK PITCHER - SMOKE (RARE COLOR WITH NICE IRID. - TOUGH!)**
73. Imperial Windmill Handled Milk Pitcher - Green (scarce with a Helios finish)
74. Imperial Hobstar Flower Stemmed 6 Ruffled Compote - Pur. (scarce with super color and irid.)
75. Imperial Pansy Flat Oval Dresser Tray - Amber (rare item in a rare color; pretty nice irid.)
76. **9" IMPERIAL EMBOSSED SCROLL FLAT PLATE - PUR. (SUPER COLOR AND SUPER IRID.; REALLY FLAT)**
77. 6" Imperial Embossed Scroll 6 Ruffled Sauce with File Ext. - Pur. (super, super irid.)
78. 10 1/2" Imperial Grape Lg. 8 Ruffled Master Berry Bowl - Pur. (scarce; has super color and irid.)
79. 8 1/2" Imperial Pansy 8 Ruffled Bowl - Pur. (absolutely super irid. - really, really nice)
80. 9 1/2" Imperial Hattie Lg. 8 Ruffled Bowl - Pur. (another super, super item with great irid.)
81. 8" Imperial Acanthus Deep Round Bowl - Pur. (great color and irid.)
82. Imperial Star and File Rose Bowl - Dk. Mari. (super color and irid.)
83. N Double Loop Chalice - Pur. (rare base color with nice irid.)
84. N Double Loop Chalice - Blue (great irid.)
85. **N PEACOCK AT THE FOUNTAIN LG. RUFFLED FTD. FRUIT BOWL - GREEN (EXTREMELY RARE WITH GREAT COLOR AND IRID.; HAS PIGMENT LINE)**
86. **N PEACOCK AT THE FOUNTAIN LG. RUFFLED FTD. FRUIT BOWL - BLUE (RARE AND REALLY NICE; GREAT EXAMPLE)**
87. N Peacock at the Fountain Lg. Ruffled ftd. Fruit Bowl - Mari. (scarce; very nice color and irid.)
88. **N PEACOCK AT THE FOUNTAIN 8 PC. RUFFLED PUNCH SET - DK. MARI. (VERY SCARCE WITH GREAT COLOR AND IRID. - REALLY NICE)**

89. **N PEACOCK AT THE FOUNTAIN 4 PC. TABLE SET - BLUE (EXTREMELY RARE SET - ALL ITEMS VARY IN COLOR AND IRID.; NICE)**
90. **N PEACOCK AT THE URN LG. ICE CREAM BOWL - ICE GREEN (RARE AND VERY DESIRABLE; GREAT COLOR AND IRID.)**
91. N Peacock at the Urn 5 pc. Ice Cream Set - Pur. (scarce and desirable set; sorta satiny)
92. N Peacock at the Urn Ind. Ice Cream Bowl - Blue (nice color and bright irid.)
93. N Peacock at the Urn Ind. Ice Cream Bowl - Mari. (nice color and irid.)
94. N Singing Birds Stippled Handled Mug - Dk. Mari. (nice color; scarce item)
95. **N SINGING BIRDS 7 PC. WATER SET - PUR. (VERY SCARCE AND VERY DESIRABLE; WELL-MATCHED SET)**
96. N Singing Birds Handled Mug - Green (super color and irid.)
97. N Singing Birds Handled Mug - Blue (nice color and irid.)
98. N Dandelion Handled Mug - Pur. (very scarce with a bright satiny finish)
99. N Dandelion Handled Mug - Custard / Nutmeg (quite a rare item; nice nutmeg; not Carnival)
100. **DUGAN S REPEAT 14 PC. MASTER PUNCH SET - PUR. (EXTREMELY RARE AND SUPER; CUPS ARE AVERAGE)**
101. Dugan Dogwood Sprays Dorned 10 Ruffled Bowl - Pur. (super color and very desirable; nice)
102. 8 1/2" Dugan Apple Blossom Twigs 10 Ruffled Bowl with Basketweave Ext. - Pur. (scarce; great irid. near the center)
103. Dugan Border Plants Dorned 10 Ruffled Bowl - Pur. (very scarce and desirable; super irid.)
104. 7 1/2" Dugan Holly Whirl 6 Ruffled Bowl - Pur. (absolutely super, super irid. - reds and blues)
105. **DUGAN BUTTERFLY AND TULIP LG. SQUARE FTD. BOWL WITH I.F.F. EXT. - PUR. (VERY RARE AND DESIRABLE; REALLY NICE COLOR AND IRID.)**
106. Dugan Maple Leaf 6 pc. Water Set - Pur. (scarce set with a satiny finish)
107. 10 1/2 - 11" Dugan Victorian Lg. 8 Ruffled Bowl - Pur. (rare item with an average satiny finish)
108. 10 1/2 - 11" Dugan Persian Garden Lg. 8 Ruffled Bowl - P. Opal. (rare and desirable; great shape, opal. and irid.)
109. **DUGAN DAHLIA FTD. WATER PITCHER - PUR. (RARE AND VERY DESIRABLE; BRIGHT AND SATINY)**
110. **DUGAN MANY FRUITS RUFFLED PUNCH BOWL AND BASE - PUR. (VERY DESIRABLE AND ATTRACTIVE; BRIGHT IRID.)**
111. N Butterfly Handled Bon Bon with Plain Ext. - Horehound (rare and unusual base color - nice)
112. N Butterfly Handled Bon Bon with Plain Ext. - Green (very attractive)
113. N Butterfly Handled Bon Bon with Plain Ext. - Pur. (nice irid.)
114. 10" Tall N Tree Trunk Standard Swung Vase - Green / Mari.
115. **N G & C 14 PC. RUFFLED MASTER PUNCH SET - BLUE (EXTREMELY RARE AND SUPER; NICE)**
116. **N G & C 14 PC. RUFFLED MASTER PUNCH SET - WHITE (EXTREMELY RARE SET; FROSTY AND NICE; BASE OF BOWL HAS A LARGE CHIP)**
117. **N G & C 14 PC. RUFFLED MASTER PUNCH SET - PUR. (RARE AND VERY DESIRABLE; NICE SET)**
118. **N G & C 14 PC. RUFFLED MASTER PUNCH SET - MARI. (RARE AND DESIRABLE; HAS A SATINY FINISH)**
119. N G & C Master Punch Base only - Pur. (scarce part)
120. **N G & C FTD. TURNED-IN CENTERPIECE BOWL - ICE GREEN (RARE AND DESIRABLE; GREAT DARK COLOR AND IRID.)**
121. **N G & C FTD. TURNED-IN CENTERPIECE BOWL - WHITE (RARE AND DESIRABLE; GREAT COLOR AND FROSTY IRID.)**
122. **N G & C FTD. TURNED-IN CENTERPIECE BOWL - GREEN (ACTUALLY QUITE A RARE ITEM IN THIS COLOR AND SHAPE; GREAT IRID.)**
123. **N G & C FTD. TURNED-IN CENTERPIECE BOWL - PUR. (VERY SCARCE WITH GREAT COLOR AND IRID.; NICE)**
124. N G & C ftd. Turned-In Centerpiece Bowl - Mari. (very scarce; nice color and irid.)
125. **N ROSE SHOW 8 RUFFLED BOWL - AQUA / MARI. (VERY RARE BASE COLOR WITH A LIGHT OVERLAY)**
126. N Rose Show 8 Ruffled Bowl - Blue Opal. (not Carnival; nice color and irid.)
127. **9" N STRAWBERRY STIPPLED PLATE WITH BASKETWEAVE EXT. - GREEN (RARE AND VERY DESIRABLE; NICE IRID.; HAS A MOLD FLAW ON EDGE)**
128. **9" N STRAWBERRY STIPPLED RUFFLED BOWL WITH RIBBED EXT. - LIME ICE GREEN (RARE AND VERY DESIRABLE WITH GREAT COLOR AND IRID.)**
129. **N THREE FRUITS MEDALLION STIPPLED FTD. RUFFLED BOWL WITH MEANDER EXT. - AQUA OPAL. (RARE AND DESIRABLE - PASTEL WITH BRIGHT YELLOW HIGHLIGHTS)**
130. **N G & C LG. STEMMED OPEN RUFFLED COMPOTE - GREEN (RARE AND DESIRABLE WITH GREAT COLOR AND IRID.)**
131. **N G & C LG. STEMMED OPEN RUFFLED COMPOTE - PUR. (RARE AND DESIRABLE; WITH SUPER COLOR AND IRID.)**
132. **N G & C LG. STEMMED OPEN RUFFLED COMPOTE - PASTEL MARI. (RARE ITEM; LIGHT BASE COLOR WITH SUPER IRID.)**
133. **N G & C VARIANT PLATE WITH BASKETWEAVE EXT. - SMOKE (DEFINITELY AN ODD BASE COLOR; VERY UNUSUAL)**
134. N G & C Variant Stippled Plate with Ribbed Ext. - Green (rare item with a subdued irid.)
135. **N G & C LG. FTD. RUFFLED FRUIT BOWL - GREEN (VERY RARE AND VERY DESIRABLE WITH SUPER COLOR AND GREAT IRID.)**
136. **N G & C LG. FTD. RUFFLED FRUIT BOWL - PUR. (HAS TO BE ONE OF THE BEST EXAMPLES WITH BRIGHT BLUES, REDS, ETC.; SUPER, SUPER)**
137. N G & C Lg. Ruffled Fruit Bowl - Dk. Mari. (very scarce with really nice color and irid.)
138. **N G & C SMALL FTD. FRUIT BOWL WITH STRAIGHT UP POINTS - ICE GREEN (RARE AND VERY DESIRABLE; GREAT COLOR AND IRID.)**
139. **N G & C SMALL FTD. FRUIT BOWL WITH STRAIGHT UP POINTS - WHITE (ANOTHER VERY SCARCE ITEM WITH GREAT COLOR AND IRID.)**
140. **N G & C FTD. FERNERY - DK. MARI. (VERY RARE AND VERY DESIRABLE; REALLY TOUGH TO FIND)**
141. **N G & C STIPPLED COVERED HUMIDOR - BLUE (RARE AND VERY DESIRABLE; REALLY TOUGH TO FIND)**
142. **N G & C 4 PC. TABLE SET - GREEN (RARE SET TO FIND COMPLETE IN THIS COLOR)**
143. N G & C Lg. Ice Cream Bowl with Basketweave Ext. - White (scarce item with great irid.)
144. N G & C Lg. Ice Cream Bowl with Basketweave Ext. - Pur. (very scarce item with a bright satiny finish)
145. **N GRAPE ARBOR 6 PC. TANKARD WATER SET - ICE BLUE (VERY RARE AND EXTREMELY DESIRABLE; PERFECT WITH NICE COLOR AND IRID.)**
146. **N LATTICE AND POINSETTIA FTD. 8 RUFFLED BOWL WITH RIBBED EXT. - PUR. (VERY SCARCE AND DESIRABLE PATTERN WITH A BRIGHT SATINY FINISH)**
147. N Beaded Cable ftd. Ruffled Rose Bowl with Ribbed Int. - Green (scarce variation; satiny irid.)
148. N Beaded Cable ftd. Ruffled Rose Bowl with Ribbed Int. - Amy. (nice satiny irid.)
149. N Beaded Cable ftd. Ruffled Rose Bowl - Custard / Nutmeg (scarce item; not Carnival)
150. **N BEADED CABLE FTD. RUFFLED ROSE BOWL - WHITE (RARE AND DESIRABLE WITH NICE FROSTY COLOR AND IRID.)**
151. N Beaded Cable ftd. Ruffled Bowl - Blue (scarce color with dark irid.)
152. N Beaded Cable ftd. Ruffled Bowl - Pur. (nice color and irid.)
153. N Beaded Cable ftd. Ruffled Bowl (odd variant) - Pur. (odd variation with a satin finish)
154. N Beaded Cable ftd. Ruffled Bowl - Dk. Mari. (nice color and irid.)
155. **N ORIENTAL POPPY 5 PC. TANKARD WATER SET - GREEN (RARE AND DESIRABLE SET; HAS A BRIGHT FINISH)**

- ___ 156. **N ORIENTAL POPPY 7 PC. TANKARD WATER SET - DK. MARI. (VERY SCARCE AND DESIRABLE SET WITH GREAT COLOR)**
- ___ 157. N Fine Cut and Roses ftd. Rose Bowl with Fancy Int. - Ice Blue (very scarce with nice color and irid.)
- ___ 158. N Fine Cut and Roses ftd. Rose Bowl - Green (very scarce with nice color and irid.)
- ___ 159. N Fine Cut and Roses ftd. Rose Bowl - Pur. (nice color and irid.)
- ___ 160. N Fine Cut and Roses ftd. Rose bowl - Amy. (nice color and irid.)
- ___ 161. N Fine Cut and Roses ftd. Rose Bowl - Dk. Mari. (nice color and irid.)
- ___ 162. N Greek Key 8 Ruffled Bowl with Basketweave Ext. - Green (very scarce with a bright finish - has a pigment line)
- ___ 163. N Greek Key 8 Ruffled Bowl with Basketweave Ext. - Amy. (average satiny irid.)
- ___ 164. 8" Tall N Ribbed Pillar Squatty Swung Vase - Ice Green Opal. (very rare base color and size; has damage on the feet)
- ___ 165. **11" TALL N RIBBED PILLAR SWUNG VASE - CELESTE BLUE (RARE AND VERY DESIRABLE COLOR WITH SOME ORIGINAL GOLD TRIM; MAY HAVE ROUGHNESS ON FEET)**
- ___ 166. N Leaf and Beads ftd. Rose Bowl - Blue / Electric Blue (very scarce with blue highlights)
- ___ 167. N Leaf and Beads ftd. Rose Bowl - Blue (scarce with dark irid.)
- ___ 168. N Leaf and Beads ftd. Rose Bowl - Pur. (nice color and irid.)
- ___ 169. N Leaf and Beads ftd. Rose Bowl - Mari. (nice color and irid.)
- ___ 170. **N LEAF AND BEADS FTD. ROSE BOWL WITH FLORAL INT. - GREEN (SUPER EXAMPLE WITH BRIGHT IRID.)**
- ___ 171. N Leaf and Beads ftd. Rose Bowl with Floral Int. - Pur. (scarce; satiny)
- ___ 172. Fenton Orange Tree ftd. Hatpin Holder - Blue (scarce; nice color and irid.)
- ___ 173. **FENTON ORANGE TREE HANDLED LOVING CUP - BLUE (VERY SCARCE WITH NICE COLOR AND IRID.)**
- ___ 174. Fenton Orange Tree Handled Loving Cup - Dk. Mari. (very scarce with nice color and irid.)
- ___ 175. **FENTON FTD. ORANGE TREE WATER PITCHER - ICE GREEN (DAMAGED BUT EXTREMELY RARE; SPOUT DAMAGED AND HAS A CRACK BUT GO FIND ANOTHER ONE)**
- ___ 176. Fenton ftd. Orange Tree 6 pc. Water Set - Blue (pitcher pretty nice - some tumblers chipped)
- ___ 177. **FENTON ORANGE TREE HANDLED SHAVING MUG - MARI. / VASELINE (RARE SIZE FOR THIS COLOR)**
- ___ 178. Fenton Orange Tree Handled Shaving Mug - Elec. Blue (super irid.; really nice)
- ___ 179. Fenton Orange Tree Handled Shaving Mug - Odd Blue (odd shade of Cobalt)
- ___ 180. **8 1/2" FENTON ORANGE TREE ICE CREAM SHAPED BOWL - GREEN (VERY SCARCE AND VERY DESIRABLE; SUPER COLOR AND IRID.)**
- ___ 181. 9 1/2" Fenton Orange Tree Flat Plate - Dk. Mari. (very desirable; great color and bright irid.)
- ___ 182. **FENTON FLOWERS FTD. ROSE BOWL - WHITE (VERY SCARCE ITEM WITH PERFECT FEET)**
- ___ 183. Fenton Flowers ftd. Rose Bowl - Green (very scarce color; nice condition with good feet)
- ___ 184. Fenton Flowers ftd. Rose Bowl - Mari. (nice color)
- ___ 185. **FENTON FLOWERS FTD. ROSE BOWL - POWDER BLUE (ALMOST WANTS TO BE SMOKE; VERY UNUSUAL)**
- ___ 186. 10" Fenton Interior Ribbed Lg. Swung Funeral Vase - Jade Green (not Carnival; nice, impressive item)
- ___ 187. **FENTON ORANGE TREE STANDARD FLARED MUG - SAPPHIRE (GREAT BASE COLOR; RARE AND DESIRABLE)**
- ___ 188. Fenton Orange Tree Standard Flared Mug - Mari. / Vaseline (scarce with great base color)
- ___ 189. Fenton Orange Tree Standard Flared Mug - Aqua / Mari. (rare and desirable base color; nice)
- ___ 190. Fenton Orange Tree Standard Flared Mug - Lt. Amy. (odd base color)
- ___ 191. Fenton Orange Tree Standard Flared Mug - Lt. Amber. (another odd base color)
- ___ 192. Fenton Orange Tree Standard Flared Mug - Blue
- ___ 193. Fenton Orange Tree Standard Flared Mug - Mari.
- ___ 194. 8 1/2 - 9" Fenton Heart and Vine 6 Ruffled Bowl - Amy. (really nice irid.)
- ___ 195. **FENTON PANELED DANDELION 7 PC. TANKARD WATER SET - GREEN (VERY SCARCE AND DESIRABLE SET; PITCHER IS GREAT - TUMBLERS AVERAGE)**
- ___ 196. **FENTON PANELED DANDELION 7 PC. TANKARD WATER SET - BLUE (VERY SCARCE AND DESIRABLE SET; NICE COLOR AND IRID.)**
- ___ 197. **FENTON PANELED DANDELION 7 PC. TANKARD WATER SET - AMY. (SCARCE AND DESIRABLE SET; NICE SATINY FINISH)**
- ___ 198. Fenton Paneled Dandelion 7 pc. Tankard Water Set - Dk. Mari. (scarce and desirable; nice, well-matched set)
- ___ 199. **FENTON BUTTERFLY AND PLUME BULBOUS HANDLED WATER PITCHER - GREEN (RARE AND DESIRABLE ITEM WITH BRIGHT SATINY IRID.)**
- ___ 200. **9 1/2" FENTON DRAGON AND STRAWBERRY ROUND FLARED BOWL - GREEN (RARE COLOR AND A RARE SHAPE; NICE BRIGHT IRID.)**
- ___ 201. **9 1/2" FENTON CAPTIVE ROSE FLARED PLATE - AMY. (RARE AND DESIRABLE; HAS NICE BRIGHT IRID.)**
- ___ 202. **8 1/2 - 9" FENTON STAG AND HOLLY SPATULA FTD. PLATE - MARI. (RARE ITEM IN THIS SHAPE; HAS BRUISE ON ONE FOOT)**
- ___ 203. 9" Fenton Holly Ice Cream Shaped Bowl - Blue (nice color with bright irid.)
- ___ 204. **FENTON KITTENS HANDLED CUP - MARI. (SCARCE ITEM)**
- ___ 205. Fenton Kittens 2 Sided Banana Dish - Mari. (scarce item)
- ___ 206. Fenton Kittens 4 Sided Bowl - Mari. (scarce item)
- ___ 207. Dugan Rambler Rose Tumbler - Blue (nice irid.)
- ___ 208. Dugan Stork and Rushes Tumbler with Beaded Edge - Blue (nice irid.)

AUCTION #2

2002 Tampa Bay Carnival Glass Club Jamboree Auction

Friday, Feb. 8, 2002, 4:00 p.m.

(preview 2:00 p.m. Fri. afternoon)

at the

Best Western Conference Center

adjacent to the

Best Western Hotel

21338 U.S. Hwy. 19 N

Clearwater, FL 33765 (727) 799-1565

Note: Both the Best Western and an EconoLodge (727-799-1569) are being used for this activity. They are both adjacent to the Conference Center and located right near the Hampton Inn we've used in the past. For further information contact Guy Nelson at (941) 764-9452.

- ___ 209. Fenton Orange Tree Stemmed Goblet - Mari. (nice color)
- ___ 210. Fenton Orange Tree Stemmed Goblet - Blue (nice color)
- ___ 211. Imperial Flute Toothpick Holder - Lt. Pur. (odd tint; great irid.)
- ___ 212. Imperial Flute Toothpick Holder - Pur. (really nice)
- ___ 213. Imperial Flute Toothpick Holder - Mari. (nice color)
- ___ 214. Dugan Stork in the Rushes Handled Mug - Mari. (satiny)
- ___ 215. **DUGAN FARMYARD LG. 6 RUFFLED BOWL WITH JEWELLED HEART EXT. - PUR. (ABSOLUTELY BEAUTIFUL ITEM WITH BRIGHT BLUE HIGHLIGHTS)**
- ___ 216. **DUGAN PETAL AND FAN LG. 6 RUFFLED BOWL WITH JEWELLED HEART EXT. - PUR. (VERY SCARCE ITEM WITH BRIGHT MULTI-COLORED IRID.)**



Lot S-5



Lot S-6



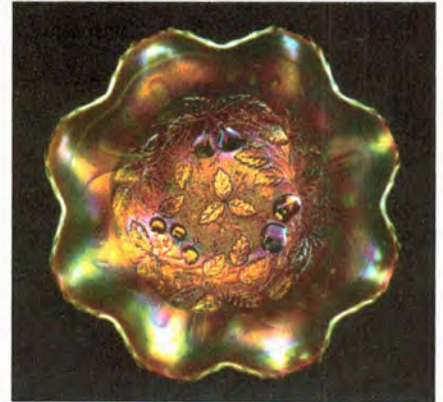
Lot S-7



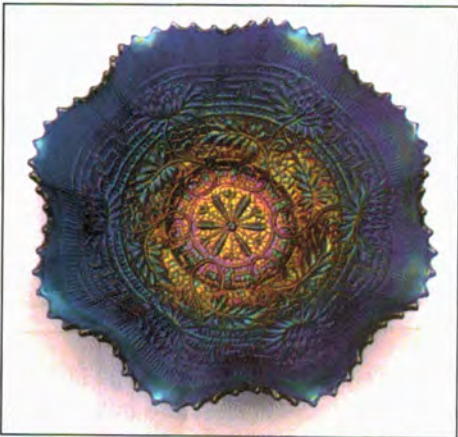
Lot S-35



Lot T-230



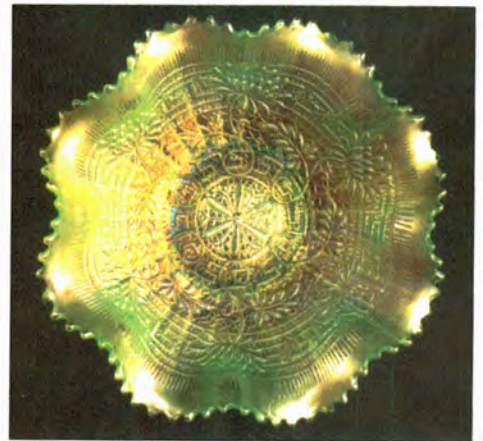
Lot T-385



Lot T-370



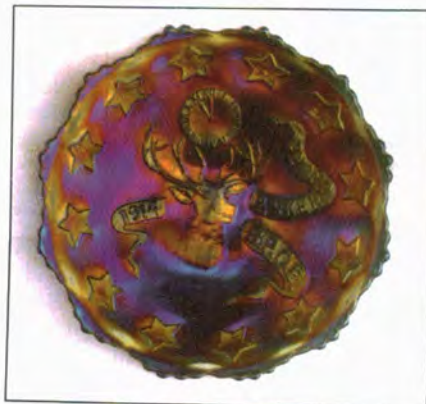
Lot T-375



Lot T-372



Lot S-22



Lot T-275



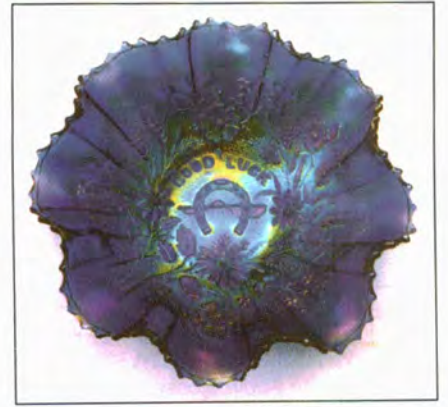
Lot S-36



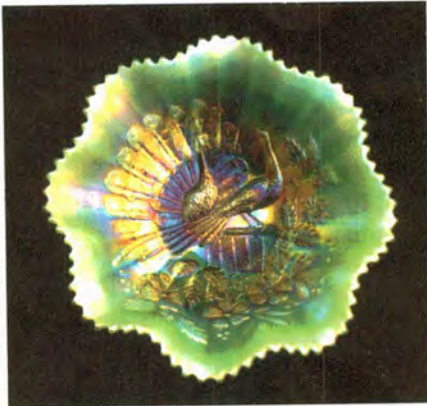
Lot S-8



Lot S-9



Lot T-390



Lot S-40



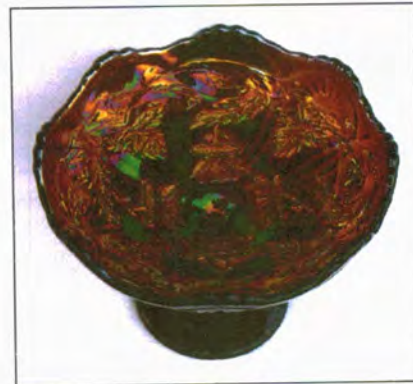
Lot S-10



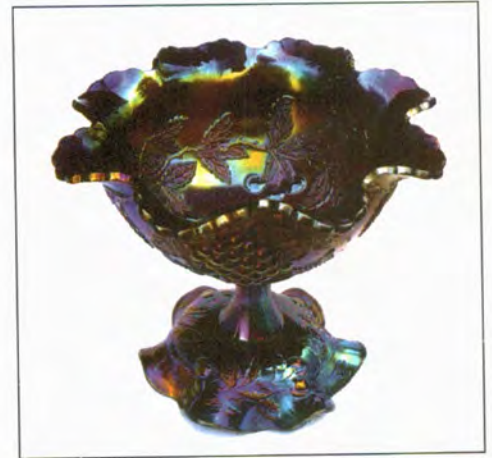
Lot S-55



Lot S-145



Lot S-25



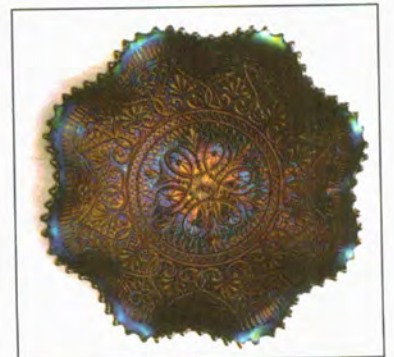
Lot S-110



Lots T-350 & T-351



Lot S-85



Lot T-381

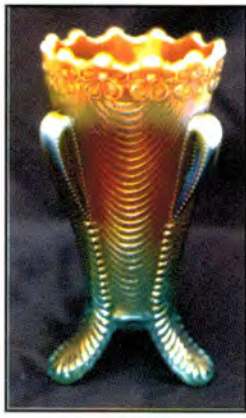
217. Dugan Interior Smooth Rays Lg. 8 Ruffled Bowl with Jewelled Heart Ext. - Pur. (scarce item with bright yellow and blue highlights)
218. **DUGAN VINTAGE LG. 8 RUFFLED BOWL WITH COMPASS EXT. - PUR. (RARE ITEM; SORTA SQUARE RUFFLED SHAPE WITH GREAT MULTI-COLORED IRID.)**
219. **10" DUGAN PETAL AND FAN LG. ICE CREAM BOWL WITH JEWELLED HEART EXT. - MARI. (VERY RARE SHAPE FOR THIS ITEM; SUPER IRID.)**
220. **DUGAN PERSIAN GARDEN LG. 10 RUFFLED FRUIT BOWL AND BASE - PUR. (TOP IS FANTASTIC - BASE IS SATINY, YOU CAN FIND ANOTHER BASE)**
221. **10 - 10 1/2" DUGAN GARDEN PATH VARIANT LG. 6 RUFFLED BOWL WITH SODA GOLD EXT. - PUR. (RARE ITEM WITH AN ATTRACTIVE INT. IRID.; NICE)**
222. Dugan Apple Blossom Twigs 10 Ruffled 2 Sided Banana Dish - Pur. (very scarce color for this shaped item; has nice interior irid.)
223. Dugan Question Mark with Georgia Peach and Puzzle Ice Cream Shaped Stemmed Compote - Pur. (scarce shape with super multi-colored irid.)
224. Dugan Six Petals Tri-Cornered Bowl - Pur. (absolutely super example; blues and reds)
225. **DUGAN FLOWERS AND FRAMES TRI-CORNERED CRIMPED EDGE BOWL - PUR. (RARE SHAPE, RARE COLOR WITH SUPER MULTI-COLORED IRID.)**
226. Dugan Paneled Cherries 10 Ruffled ftd. Bowl - Pur. (scarce item with bright multi-colored irid.)
227. Dugan Flowers and Frames Deep 10 Ruffled Bowl / Vase - Pur. (very scarce shape with really nice irid.)
228. 10 - 11" Dugan Pulled Loop Swung Vase - Pur. (scarce with bright irid.; small flake on mold line)
229. Dugan Puzzle Handled 2 Sided Bon Bon - Pur. (great color and shape; small flake on base)
230. **DUGAN MANY FRUITS 10 PC. ROUND PUNCH SET - PUR. (RARE AND VERY DESIRABLE SET; BOWL AND BASE ARE GREAT)**
231. **9" DUGAN VINTAGE GRAPE DOMED 8 RUFFLED BOWL - GREEN (RARE COLOR FOR A VERY SCARCE ITEM)**
232. 10 3/4" Tall Dugan Spiralx Swung Vase - Blue (scarce color; has a small flake on base)
233. 10" Tall Dugan Pulled Loop Swung Vase - P. Opal. (nice opal.)
234. 7 1/2" Dugan Vining Twigs and Daisy Low 8 Ruffled Bowl - Pur. (scarce item)
235. **DUGAN GOD AND HOME 7 PC. WATER SET - BLUE (VERY RARE AND DESIRABLE SET; PERFECT WITH NICE COLOR AND SATINY FINISH)**
236. Dugan Heavy Iris 6 pc. Tankard Water Set - Pur. (super set but the pitcher has a problem - cracked!)
237. Dugan Heavy Tankard Water Pitcher - Mari. (scarce with nice color)
238. 9" Dugan Windflower 10 Ruffled Bowl - Blue Opal. (not Carnival; nice color and opal.; very scarce)
239. 9" Dugan Windflower 10 Ruffled Bowl - Blue (satiny finish)
240. Dugan Maple Leaf Handled Water Pitcher - Blue (rare color for this item; may have a couple pinheads)
241. Dugan Maple Leaf 7 pc. Water Set - Dk. Mari. (scarce set; nice color)
242. Dugan Vineyard 7 pc. Water Set - Mari. (really nice color and irid.)
243. 10 1/4" Dugan Petal and Fan Lg. 8 Ruffled Bowl with Jewelled Heart Ext. - Mari. (sorta pastel; has super irid. - really nice)
244. 9 3/4" Dugan Petal and Fan Lg. 10 Ruffled Bowl with Jewelled Heart Ext. - P. Opal.
245. **10 1/2" DUGAN PODS AND POSIES FLAT CHOP PLATE - P. OPAL. (RARE AND DESIRABLE; NICE OPAL. AND AVERAGE IRID.)**
246. Signed Script "Northwood" Nautilus Whimsey Creamer - P. Opal. (very scarce with nice color and irid.)
247. 10 1/2" Dugan Interior Smooth Rays Lg. 8 Ruffled Bowl with Jewelled Heart Ext. - P. Opal.
248. 10 3/4" Dugan Ski Star Lg. 6 Ruffled Bowl with Compass Ext. - P. Opal. (nice opal. and irid.)
249. 10 1/2" Dugan Ski Star Lg. 8 Ruffled Bowl with Compass Ext. - P. Opal. (very light irid.)
250. 9 1/2" Dugan Wishbone and Spades Lg. 6 Ruffled Bowl - P. Opal. (scarce item in this color and shape)
251. 8 7/8" Dugan Round Up Low 10 Ruffled Bowl / Plate - Blue (scarce with a satiny finish)
252. Dugan Grape Delight 6 ftd. Round Rose Bowl - Pur. (super irid.; scarce shape and good feet)
253. Dugan Grape Delight 6 ftd. Ruffled Rose Bowl - Pur. (nice irid.; good feet)
254. Dugan Grape Delight 6 ftd. Ruffled Rose Bowl - Blue (scarce; satiny finish)
255. **DUGAN CHERRY WREATH COVERED BUTTER DISH - WHITE / DECOR. (ACTUALLY QUITE A RARE ITEM; HAS EXCELLENT GOLD DECORATION - SUPER)**
256. Dugan Question Mark ftd. Plate with Georgia Peach and Puzzle Ext. - White (very scarce item in this shape; super irid.)
257. 8 7/8" Dugan Fanciful Low 10 Ruffled Bowl / Plate - White (scarce; super irid.)
258. Dugan Grapevine Lattice Low 8 Ruffled Bowl - White (super irid.)
259. Dugan Constellation Stemmed 6 Ruffled Compote - White (scarce; super irid.)
260. **DUGAN BROOKLYN BRIDGE 6 RUFFLED BOWL - MARI. (RARE AND DESIRABLE; SORTA RADIUM FINISH)**
261. Dugan Pods and Posies Lg. Rose Bowl with Soda Gold Ext. - Mari. (quite a rare shape for this pattern; satiny)
262. Dugan Fishermans Handled Mug - Pur. (excellent example with great detail and irid.)
263. **DUGAN BEADED SHELL HANDLED MUG - MARI. (RARE AND DESIRABLE; HAS GREAT PINKISH IRID.)**
264. Dugan Beaded Shell Handled Mug - Pur. (nice irid.)
265. **DUGAN STORK IN THE RUSHES WITH LATTICE BAND HANDLED MUG - BLUE OPAL. (NOT CARNIVAL; VERY RARE TO FIND; NICE ITEM)**
266. Fenton Flower Spray Handled Mug - Clear Opal. (scarce; not Carnival)
267. Dugan Vintage Stemmed Wine Glass - Amy. (nice irid.)
268. Dugan Basketweave Miniature Handled Flower Basket - Mari.
269. **8 1/2" WESTMORELAND CAROLINA DOGWOOD 6 RUFFLED BOWL - DK. MARI. / MILK GLASS (SUPER EXAMPLE WITH DARK MARI. OVERLAY)**
270. **6 3/4" TALL U.S. GLASS COSMOS AND CANE STEMMED ROUND COMPOTE - WHITE (VERY RARE AND DESIRABLE ITEM; SUPER FROSTY ITEM WITH GREAT IRID.)**
271. 8" Jefferson Glass Co. Jolly Bear 6 Ruffled Crimped Edge Bowl - Clear Opal. (rare item in any color; not Carnival)
272. 7" Fenton Acorns Ice Cream Shaped Bowl - Aqua / Mari. (scarce color)
273. 7 1/2" Fenton Acorns Low 8 Ruffled Bowl - Blue (satiny)
274. 7" Fenton Acorns 8 Ruffled Bowl - Blue / Irid. Exterior (only iridized on the exterior - unusual)
275. **FENTON 1914 BPOE ELKS FLAT PLATE - BLUE (RARE AND DESIRABLE; HAS AVERAGE MOLD WORK AND GREAT IRID.)**
276. 7 1/2" Fenton Horsehead Medallion 6 Ruffled Bowl - Mari. (satiny finish)
277. Fenton Butterflies 2 Handled 4 Sided Bon Bon - Amy.
278. 8 3/4" Fenton Heart and Vine 6 Ruffled Bowl - Blue (bright satiny irid.)
279. 8 3/4" Fenton Heart and Vine 6 Ruffled Bowl - Mari. (satiny irid.)
280. **FENTON BLACKBERRY BLOCK TANKARD WATER PITCHER - DK. MARI. (RARE AND DESIRABLE WITH REALLY NICE COLOR AND IRID.)**
281. Fenton Blackberry Block Tankard Water Pitcher - Amy. (rare and desirable but cracked)
282. Fenton Blackberry Block Tumbler - Amy. (scarce item with nice color and irid.)
283. Fenton Blackberry Block 2 Row Open Edge 2 Sided Hat - Powder Blue / Mari. (cracked)
284. 6 1/2" Fenton Blackberry Open Edge Swung Vase - Lt. Blue / Lt. Mari. (rare item but has chipped edge)
285. **FENTON ENAMELED DIANTHUS / PRISM BAND TANKARD WATER PITCHER - WHITE (VERY SCARCE AND DESIRABLE ITEM WITH GREAT DECORATION)**
286. **FENTON FORGET ME NOT / PRISM BAND TANKARD WATER PITCHER - DK. MARI. (VERY SCARCE AND DESIRABLE WITH GREAT COLOR AND DECOR.)**
287. **FENTON 10 MUMS 5 PC. TANKARD WATER SET - MARI. (RARE SET - ESP. THE PITCHER; 2 TUMBLERS AS IS)**

288. 9" Fenton Diamond Rib Swung Vase - Blue (nice irid.)
289. 7 1/4" Fenton 3 Diamonds and Bows Swung Vase - Mari. (scarce pattern)
290. **20" TALL X 5" BASE FENTON RUSTIC SWUNG FUNERAL VASE - BLUE (RARE AND VERY DESIRABLE; NICE SIZE, COLOR AND IRID.)**
291. **18 1/4" TALL X 5" BASE FENTON RUSTIC SWUNG FUNERAL VASE - DK. MARI. (VERY SCARCE WITH GREAT COLOR AND IRID.)**
292. 20" Tall x 5" Base Fenton Interior Wide Panel Swung Funeral Vase - Jade Green (not Carnival but impressive; has chip on base)
293. **FENTON ORANGE TREE 8 PC. RUFFLED PUNCH SET - BLUE (VERY SCARCE AND DESIRABLE; GREAT IRID. - NICE)**
294. Fenton Orange Tree Handled Shaving Mug - Blue (satin irid.)
295. Fenton Fentonia Handled Water Pitcher - Mari. (rare item with color that gets lighter at the base)
296. Fenton Fentonia Tumbler - Mari. (scarce)
297. Fenton Lattice and Grape 7 pc. Tankard Water Set - Mari. (nice color and irid.; well-matched)
298. Fenton Butterfly and Berry 6 pc. Water Set - Mari. (nice satiny finish)
299. Fenton Freesia Enameled Tankard Water Pitcher with Drape Int. and (3) Tumblers - Mari. / Clear (very scarce items with great decor.)
300. **FENTON KITTENS CUP AND SAUCER - MARI. (NICE COLOR AND VERY SCARCE; HAS 2 SETS OF KITTENS)**
301. Fenton Kittens 4 Sided Toothpick Holder - Dk. Mari. (odd shape; great color)
302. Fenton Kittens Cereal Bowl - Mari. (scarce)
303. Fenton Kittens 2 Sided Banana Dish - Mari. (scarce)
304. Fenton Kittens 4 Sided Square Bowl - Mari. (scarce)
305. **N G & C MID-SIZE RUFFLED PUNCH BOWL, BASE AND (1) CUP - BLUE (VERY RARE AND DESIRABLE SET; HAS A SUPER TOP; BASE IS SATINY)**
306. **N G & C 10 PC. MID-SIZE RUFFLED PUNCH SET - ICE GREEN (VERY RARE AND DESIRABLE; ONE POINT OF TOP IS REGLUED - STILL SUPER)**
307. **N G & C 10 PC. MID-SIZE RUFFLED PUNCH SET - HORE-HOUND / MARI. (RARE ITEM; HAS AN ODD BASE COLOR TO THE TOP; NICE SET)**
308. **N G & C 9 PC. TABLE SIZE FLARED PUNCH SET - AMY. (A VERY RARE SHAPE FOR THIS ITEM; EXCELLENT COLOR AND IRID.)**
309. N G & C 8 pc. Table Size Ruffled Punch Set - Dk. Mari. (very scarce and desirable; great color and irid.)
310. **N G & C 10 PC. STIPPLED TABLE SIZE RUFFLED PUNCH SET - BLUE (VERY RARE AND VERY DESIRABLE; GREAT COLOR AND IRID.)**
311. (4) N G & C Stippled Handled Punch Cups - Blue (selling so much each for set)
312. **N G & C 9 PC. STIPPLED TABLE SIZE RUFFLED PUNCH SET - DK. MARI. (RARE AND DESIRABLE SET; GREAT COLOR AND IRID.)**
313. **N G & C CANDLE LAMP - AMY. (RARE AND DESIRABLE; SATINY AND WELL-MATCHED)**
314. **N G & C CANDLE LAMP - MARI. (RARE AND DESIRABLE; SATINY AND WELL-MATCHED)**
315. **N G & C SMALL SIZE RUFFLED FTD. FRUIT BOWL - ICE GREEN (RARE AND VERY DESIRABLE; GREAT DARK COLOR)**
316. **N G & C SMALL SIZE RUFFLED FTD. FRUIT BOWL - GREEN (RARE WITH GREAT COLOR AND IRID.)**
317. N G & C Small Size ftd. Ruffled Fruit Bowl - Blue (very scarce with multi-colored irid.)
318. N G & C Small Size ftd. Ruffled Fruit Bowl - Pur. (very scarce with really nice color and irid.)
319. N G & C Small Size ftd. Ruffled Fruit Bowl - Dk. Mari. (scarce with nice color and irid.)
320. **N (DUGAN) G & C FTD. BANANA BOAT - ELEC. BLUE (RARE AND VERY DESIRABLE WITH GREAT BLUE IRID.)**
321. N (Dugan) G & C ftd. Banana Boat - Pur. (very scarce with an unusual flare; nice)
322. N (Dugan) G & C ftd. Banana Boat - Green (very scarce color to find; really nice)
323. **N (DUGAN) G & C FTD. BANANA BOAT - ICE GREEN (RARE AND VERY DESIRABLE; A BEAUTY!)**
324. **N (DUGAN) G & C FTD. BANANA BOAT - ICE BLUE (ANOTHER RARE AND VERY DESIRABLE ITEM; NICE)**
325. **N (DUGAN) G & C FTD. BANANA BOAT - WHITE (VERY SCARCE; FROSTY WITH GREAT IRID.)**
326. N (Dugan) G & C ftd. Banana Boat - Dk. Mari. (super color and irid.)
327. N (Dugan) G & C ftd. Banana Boat - Crystal / Decor. (scarce item with great decor.; not Carnival)
328. 6 1/2" N G & C Handled Card Tray with Basketweave Ext. - Amy. (scarce; satiny)
329. 9" N G & C Bowl with Pie Crust Edge and Basketweave Ext. - Green (bright satiny irid.)
330. **N (DUGAN) G & C STIPPLED BANDED FTD. BANANA BOAT - GREEN (EXTREMELY RARE VARIATION WITH EXCELLENT IRID. - REALLY NICE)**
331. **N (DUGAN) G & C STIPPLED BANDED FTD. BANANA BOAT - BLUE / ELEC. BLUE (SUPER, SUPER COLOR AND IRID.; VERY RARE)**
332. N (Dugan) G & C Stippled Banded ftd. Banana Boat - Odd Mari. (odd tint, sorta different)
333. N (Dugan) G & C Stippled Banded ftd. Banana Boat - Dk. Mari. (nice color and irid.)
334. N (Dugan) G & C Stippled Banded ftd. Banana Boat - Custard / Nutmeg (not Carnival but rare; has swirl line)
335. **N (DUGAN) G & C BANDED FTD. BANANA BOAT - CUSTARD / PEARLIZED (RARE AND DESIRABLE WITH A GREAT LUSTRE)**
336. **N (DUGAN) G & C BANDED FTD. BANANA BOAT - BLUE (RARE AND DESIRABLE WITH GREAT COLOR AND IRID.)**
337. N (Dugan) G & C Banded ftd. Banana Boat - Mari. (scarce with nice color and irid.)
338. 9" N G & C Variant 8 Ruffled Bowl with Plain Ext. - Pur. (nice color and irid.)
339. 9" N G & C Variant 8 Ruffled Bowl with Plain Ext. - Dk. Mari. (really nice color and irid.)
340. 9" N G & C Variant Flared Plate with Plain Ext. - Crystal (not iridized and very unusual)
341. **N G & C FTD. HATPIN HOLDER - GREEN (VERY SCARCE AND DESIRABLE; WITH BRIGHT HIGHLIGHTS)**
342. N G & C ftd. Hatpin Holder - Pur. (very scarce and desirable; really nice)
343. N G & C ftd. Hatpin Holder - Mari. (scarce with really nice color and irid.)
344. N Singing Birds Stippled Handled Mug - Mari. (scarce variation - nice color)
345. N Singing Birds Handled Mug - Lt. Amy. (light color with nice irid.)
346. N Singing Birds Handled Mug - Pur. (nice color and irid.)
347. N Singing Birds Handled Mug - Blue (nice color and irid.)
348. N Singing Birds Handled Mug - Green (scarce with nice color and irid.)
349. N Singing Birds Handled Mug - Dk. Mari. (really nice color)
350. **N RASPBERRY 7 PC. WATER SET - ICE BLUE (EXTREMELY RARE AND VERY DESIRABLE SET; DARK PITCHER - TUMBLERS ARE LIGHTER)**
351. **N RASPBERRY HANDLED MILK PITCHER - ICE BLUE (VERY RARE AND VERY DESIRABLE; SUPER COLOR AND IRID.)**
352. N Raspberry 7 pc. Water Set - Green (scarce and desirable set with nice color and irid.)
353. N Raspberry Handled Water Pitcher - Pur. (scarce with nice color and irid.)
354. N Raspberry Tumbler - Pur. (super example)
355. N Raspberry Handled Milk Pitcher - Pur. (scarce with nice color and irid.)
356. N Grape Arbor 7 pc. Tankard Water Set - Dk. Mari. (scarce set with great color and irid.)
357. 14 1/4" Tall x 4 1/2" Base N Thin Rib Mid Size Swung Vase - Coral Red (not Carnival; scarce and desirable)
358. 7 1/2" N Thin Rib Standard Swung Vase - Green (average color)
359. N Peach Pickle Castor and Frame - White (now THIS is different - a very unusual set)

- ___ 360. **N CORN VASE WITH STALK BASE - AQUA / TEAL (EXTREMELY RARE AND VERY DESIRABLE; A REALLY TOUGH BASE COLOR - GO FIND ONE!)**
- ___ 361. **N DAISY AND DRAPE FTD. TURNED-IN VASE - LT. ICE BLUE (VERY RARE AND VERY DESIRABLE; COLOR A BIT LIGHTER BUT STILL TOUGH TO FIND!)**
- ___ 362. N Daisy and Drape ftd. Turned-In Vase - White (scarce with nice frosty irid.)
- ___ 363. **N DAISY AND DRAPE FTD. FLARED VASE - AQUA OPAL. (RARE AND DESIRABLE; NICE OPAL. AND MARIGOLD OVERLAY)**
- ___ 364. **N DRAPERY RUFFLED ROSE BOWL - BLUE / ELEC. BLUE (RARE AND DESIRABLE ITEM WITH BLUE HIGHLIGHTS)**
- ___ 365. **N PEACOCK AT THE FOUNTAIN FTD. RUFFLED FRUIT BOWL - GREEN (VERY RARE AND DESIRABLE BUT HAS HAIRLINE BY ONE FOOT)**
- ___ 366. N Peacock at the Fountain ftd. Ruffled Fruit Bowl - Mari. (scarce; nice exterior color and irid.)
- ___ 367. **7 3/4" N WILD STRAWBERRY HANDGRIP PLATE WITH BASKETWEAVE EXT. - PUR. (SCARCE WITH BRIGHT MULTI-COLORED IRID.)**
- ___ 368. 7 3/4" N Wild Strawberry Handgrip Plate with Basketweave Ext. - Dk. Mari. (another example with bright irid.)
- ___ 369. N Nippon Bowl with Pie Crust Edge and Ribbed Ext. - White (very scarce and very desirable; an excellent example)
- ___ 370. **N EMBROIDERED MUMS 8 RUFFLED BOWL WITH RIBBED EXT. - ELEC. BLUE (ABSOLUTELY FANTASTIC EXAMPLE; SUPER IRID.)**
- ___ 371. N Embroidered Mums 8 Ruffled Bowl with Ribbed Ext. - Amy. (scarce item with a goldish satiny finish)
- ___ 372. **N EMBROIDERED MUMS 8 RUFFLED BOWL WITH RIBBED EXT. - ICE GREEN (RARE AND DESIRABLE ITEM WITH AVERAGE IRID.)**
- ___ 373. N Three Fruits Stippled 8 Ruffled Bowl with Ribbed Ext. - Blue Opal. (not Carnival; nice color and opal.; scarce)
- ___ 374. N Three Fruits Stippled 8 Ruffled Bowl with Ribbed Ext. - Dk. Mari. (scarce with nice color and irid.)
- ___ 375. **N THREE FRUITS STIPPLED PLATE WITH RIBBED EXT. - ELEC. BLUE (VERY SCARCE AND VERY DESIRABLE WITH BLUE HIGHLIGHTS - NICE)**
- ___ 376. **N WISHBONE FTD. PLATE WITH RUFFLES AND RINGS EXT. - MARI. (RARE AND DESIRABLE WITH A BRIGHT SATINY FINISH)**
- ___ 377. **N WISHBONE FTD. DEEP 8 RUFFLED BOWL WITH RUFFLES AND RINGS EXT. - PUR. (SUPER IRID. - BRIGHT AND MULTI-COLORED; NICE)**
- ___ 378. N Wishbone ftd. 8 Ruffled Bowl with Ruffles and Rings Ext. - Green (satiny finish; nice)
- ___ 379. N Wishbone ftd. 8 Ruffled Bowl with Ruffles and Rings Ext. - Mari. (satiny finish)
- ___ 380. **N HEARTS AND FLOWERS FLARED PLATE WITH RIBBED EXT. - MARI. (RARE AND DESIRABLE WITH A DARK SATINY FINISH)**
- ___ 381. **N HEARTS AND FLOWERS 8 RUFFLED BOWL WITH RIBBED EXT. - PUR. (SUPER EXAMPLE WITH A BRIGHT MULTI-COLORED IRID.)**
- ___ 382. N Hearts and Flowers 8 Ruffled Bowl with Ribbed Ext. - Ice Blue (scarce and desirable; nice irid.; it rotates on the base)
- ___ 383. N Hearts and Flowers 8 Ruffled Bowl with Ribbed Ext. - White (scarce with nice color and frosty irid.)
- ___ 384. **N HEARTS AND FLOWERS 8 RUFFLED BOWL WITH RIBBED EXT. - MARI. (VERY SCARCE AND VERY DESIRABLE; BRIGHT YELLOW AND PINK IRID.)**
- ___ 385. **N THREE FRUITS MEDALLION STIPPLED FTD. RUFFLED BOWL WITH MEANDER EXT. - ICE GREEN OPAL. (VERY RARE AND VERY TOUGH TO FIND; OPAL. ON EDGE WITH A BUTTER-SCOTCH OVERLAY)**
- ___ 386. N Three Fruits Medallion Stippled ftd. Ruffled Bowl with Meander Ext. - Blue Opal. (not Carnival but very scarce and nice)
- ___ 387. 6 1/2" N Fruits and Flowers 6 Ruffled Sauce with Basketweave Ext. - Green (scarce with nice color and irid.)
- ___ 388. **N GOOD LUCK STIPPLED BOWL WITH PIE CRUST EDGE AND RIBBED EXT. - BLUE (RARE AND DESIRABLE WITH A SATINY MULTI-COLORED IRID.)**
- ___ 389. N Good Luck Bowl with Pie Crust Edge and Ribbed Ext. - Dk. Mari. (scarce with really nice color and irid.)
- ___ 390. **N GOOD LUCK 8 RUFFLED BOWL WITH RIBBED EXT. AND NARROW BASE - ODD ELEC. BLUE (RARE AND DESIRABLE; GREAT IRID. - ALMOST WANTS TO BE A RENNINGER BLUE)**
- ___ 391. N Good Luck 8 Ruffled Bowl with Ribbed Ext. - Blue / Elec. Blue (very scarce with great color and irid.)
- ___ 392. **N GOOD LUCK 8 RUFFLED BOWL WITH BASKETWEAVE EXT. - EMERALD GREEN (VERY SCARCE WITH BRIGHT COLOR AND MULTI-COLORED IRID.)**
- ___ 393. N Good Luck 8 Ruffled Bowl with Basketweave Ext. - Amy. (scarce with satiny finish)
- ___ 394. N Good Luck 8 Ruffled Bowl with Ribbed Ext. - Mari. (scarce; nice color and irid.)
- ___ 395. **N THREE FRUITS PLATE WITH PLAIN EXT. - PUR. (VERY SCARCE WITH EXCELLENT COLOR AND IRID.; SUPER)**
- ___ 396. N Three Fruits 8 Ruffled Bowl with Plain Ext. - Pur. (scarce with nice irid.)
- ___ 397. N Three Fruits 8 Ruffled Bowl with Plain Ext. - Lavender (odd base color - rare but chink out of base)
- ___ 398. N Three Fruits 8 Ruffled Bowl with Plain Ext. - Pastel Mari. (average color with super irid.)
- ___ 399. N Three Fruits Plate with Basketweave Ext. - Mari. (satiny finish with slight wear)
- ___ 400. N Three Fruits Plate with Basketweave Ext. - Green (actually quite a nice example - bright)
- ___ 401. N Three Fruits 8 Ruffled Bowl with Basketweave Ext. - Green (scarce with nice color and irid.)
- ___ 402. N Three Fruits 8 Ruffled Bowl with Basketweave Ext. - Mari. (satiny and nice)
- ___ 403. N Strawberry Bowl with Pie Crust Edge and Plain Ext. - Green (bright color and irid. - really nice)
- ___ 404. N Strawberry 8 Ruffled Bowl with Plain Ext. - Green (scarce with an odd yellow irid.)
- ___ 405. N Strawberry 8 Ruffled Bowl with Plain Ext. - Dk. Mari. (has bright multi-colored irid.)
- ___ 406. N Strawberry Plate with Basketweave Ext. - Amy. (scarce; has a satiny finish)
- ___ 407. Pastel Swan - Odd. Topaz Opal. (sorta lime green / vaseline opal.)
- ___ 408. Pastel Swan - Pink
- ___ 409. Pastel Swan - Ice Green
- ___ 410. Pastel Swan - Celeste Blue



Lot S-50



Lot T-363



Lot T-361



Lot T-360



Lot S-37



Lot T-280



Lot S-52



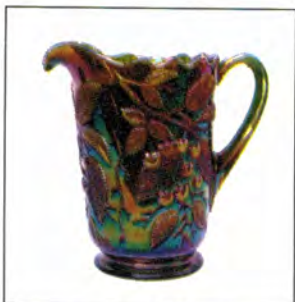
Lot T-270

Burns Auction Service
P.O. Box 608
Bath, New York 14810

First Class
US Postage
PAID
Permit No. 7
Hammondsport, NY

***Florida Auction
Extravazanza
2002!***

**LEE MARKLEY
BOX 306
MENTONE IN 46539**



Lot S-30